

Data Path : Z:\VOASRV\HPCHEM1\MSVOA\_Y\DATA\VY092319\  
 Data File : VY000137.D  
 Acq On : 23 Sep 2019 17:44  
 Operator : SY/MD  
 Sample : K5008-07  
 Misc : 5.68g/5.00ml/MSVOA\_Y/SOIL  
 ALS Vial : 15 Sample Multiplier: 1

Instrument :  
 MSVOA\_Y  
 ClientSampleId :  
 SB-7

Quant Time: Sep 24 05:23:23 2019  
 Quant Method : Z:\VOASRV\HPCHEM1\MSVOA\_Y\METHODS\82Y092319S.M  
 Quant Title : SW846 8260  
 QLast Update : Tue Sep 24 05:14:45 2019  
 Response via : Initial Calibration

Internal Standards	R.T.	QIon	Response	Conc	Units	Dev(Min)
1) Pentafluorobenzene	7.79	168	87113	50.00	ug/l	0.00
34) 1,4-Difluorobenzene	8.69	114	182813	50.00	ug/l	0.00
63) Chlorobenzene-d5	11.49	117	156698	50.00	ug/l	0.00
72) 1,4-Dichlorobenzene-d4	13.42	152	93905	50.00	ug/l	0.00

## System Monitoring Compounds

33) 1,2-Dichloroethane-d4	8.14	65	59607	59.53	ug/l	0.00
Spiked Amount	50.000		Recovery	=	119.06%	
35) Dibromofluoromethane	7.72	113	53970	51.41	ug/l	0.00
Spiked Amount	50.000		Recovery	=	102.82%	
50) Toluene-d8	10.18	98	217287	51.42	ug/l	0.00
Spiked Amount	50.000		Recovery	=	102.84%	
62) 4-Bromofluorobenzene	12.47	95	160849	103.50	ug/l	0.00
Spiked Amount	50.000		Recovery	=	207.00%	

## Target Compounds

					Qvalue
3) Chloromethane	2.11	50	1664	Below Cal	100
11) Tert butyl alcohol	4.95	59	636	6.152 ug/l #	72
13) Acrolein	3.73	56	74	1.762 ug/l #	1
14) Allyl chloride	4.68	41	4288	2.900 ug/l #	49
16) Acetone	3.96	43	11285	57.972 ug/l	95
18) Methyl Acetate	4.69	43	11541	16.184 ug/l #	46
20) Methylene Chloride	4.71	84	8271	6.323 ug/l	92
25) 2-Butanone	6.99	43	5164	14.298 ug/l #	75
31) Cyclohexane	7.79	56	3797	1.949 ug/l #	72
36) 1,1-Dichloropropene	7.79	75	8344	4.929 ug/l #	48
37) Ethyl Acetate	6.99	43	5164	5.777 ug/l #	67
38) Carbon Tetrachloride	7.79	117	9501	6.540 ug/l #	21
39) Methylcyclohexane	9.15	83	22241	9.553 ug/l #	35
46) Dibromomethane	9.26	93	956	1.362 ug/l #	1
47) Bromodichloromethane	9.46	83	15303	9.524 ug/l #	38
48) Methyl methacrylate	9.32	41	4003	5.239 ug/l #	19
51) 4-Methyl-2-Pentanone	10.06	43	2243	2.462 ug/l #	34
55) 1,1,2-Trichloroethane	10.61	97	2652	2.639 ug/l #	35
56) Ethyl methacrylate	10.48	69	55765	39.394 ug/l #	92
59) 2-Hexanone	10.80	43	21031	32.953 ug/l #	32
61) 1,2-Dibromoethane	11.07	107	1730	1.832 ug/l #	1
67) Ethyl Benzene	11.60	91	9103	1.574 ug/l #	67
68) m/p-Xylenes	11.70	106	2372	1.064 ug/l #	1
74) N-aryl acetate	12.09	43	24039	11.536 ug/l #	1
75) 1,1,2,2-Tetrachloroethane	12.54	83	12088	8.097 ug/l #	25
76) 1,2,3-Trichloropropane	12.48	75	39162	39.795 ug/l #	100
79) 2-Chlorotoluene	12.94	91	11801	2.325 ug/l	96
81) trans-1,4-Dichloro-2-buten	12.48	75	39162	65.412 ug/l #	41
82) 4-Chlorotoluene	12.94	91	11801	2.254 ug/l	96
83) tert-Butylbenzene	13.07	119	7130	1.391 ug/l #	16
85) sec-Butylbenzene	13.25	105	14117	1.843 ug/l #	1
89) n-Butylbenzene	13.69	91	8357	1.247 ug/l #	59
92) 1,2-Dibromo-3-Chloropropan	14.41	75	2219	8.087 ug/l #	1
95) Naphthalene	15.20	128	32689	6.969 ug/l #	1

Data Path : Z:\VOASRV\HPCHEM1\MSVOA\_Y\DATA\VY092319\  
 Data File : VY000137.D  
 Acq On : 23 Sep 2019 17:44  
 Operator : SY/MD  
 Sample : K5008-07  
 Misc : 5.68g/5.00ml/MSVOA\_Y/SOIL  
 ALS Vial : 15 Sample Multiplier: 1

**Instrument :**  
 MSVOA\_Y  
**ClientSampleId :**  
 SB-7

Quant Time: Sep 24 05:23:23 2019  
 Quant Method : Z:\VOASRV\HPCHEM1\MSVOA\_Y\METHODS\82Y092319S.M  
 Quant Title : SW846 8260  
 QLast Update : Tue Sep 24 05:14:45 2019  
 Response via : Initial Calibration

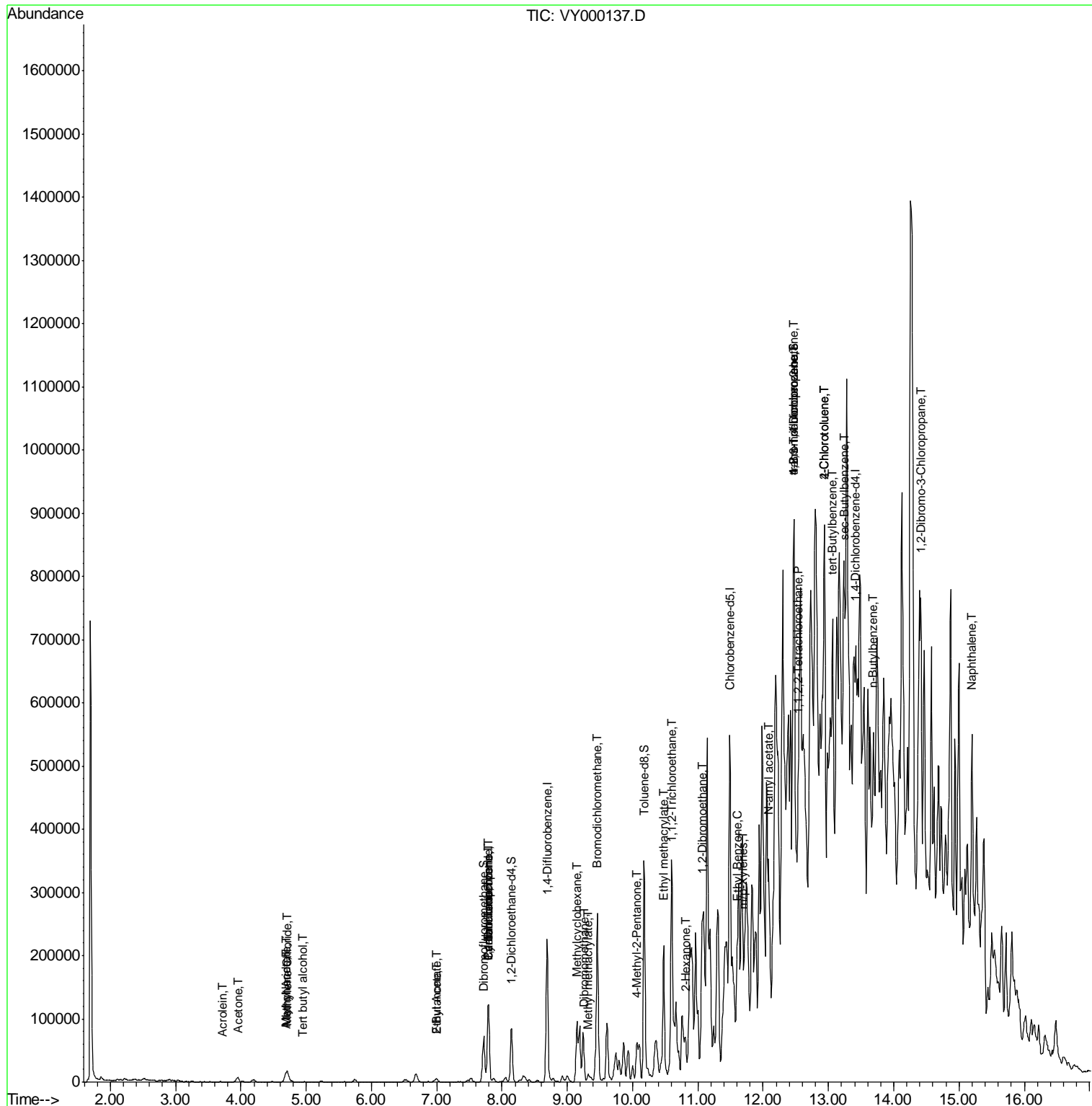
Internal Standards	R.T.	QIon	Response	Conc	Units	Dev(Min)
-----	-----	-----	-----	-----	-----	-----
-----	-----	-----	-----	-----	-----	-----

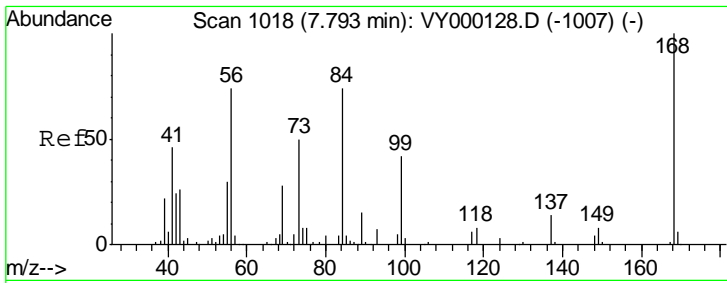
(#) = qualifier out of range (m) = manual integration (+) = signals summed

Data Path : Z:\VOASRV\HPCHEM1\MSVOA\_Y\DATA\VY092319\  
 Data File : VY000137.D  
 Acq On : 23 Sep 2019 17:44  
 Operator : SY/MD  
 Sample : K5008-07  
 Misc : 5.68g/5.00ml/MSVOA\_Y/SOIL  
 ALS Vial : 15 Sample Multiplier: 1

Instrument :  
 MSVOA\_Y  
 Client Sampled :  
 SB-7

Quant Time: Sep 24 05:23:23 2019  
 Quant Method : Z:\VOASRV\HPCHEM1\MSVOA\_Y\METHODS\82Y092319S.M  
 Quant Title : SW846 8260  
 QLast Update : Tue Sep 24 05:14:45 2019  
 Response via : Initial Calibration

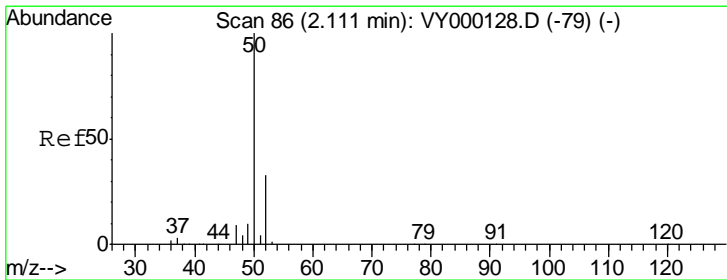
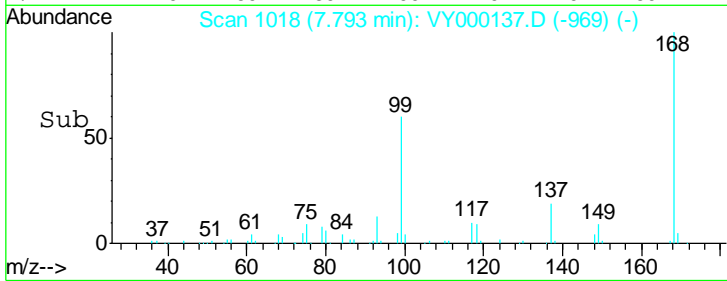
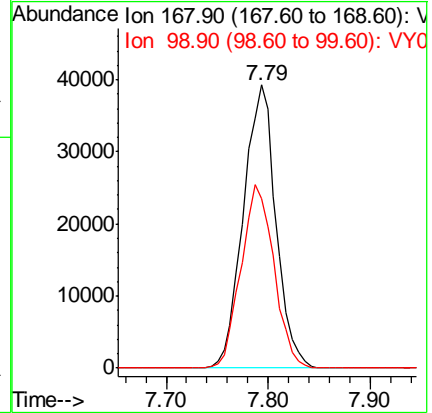
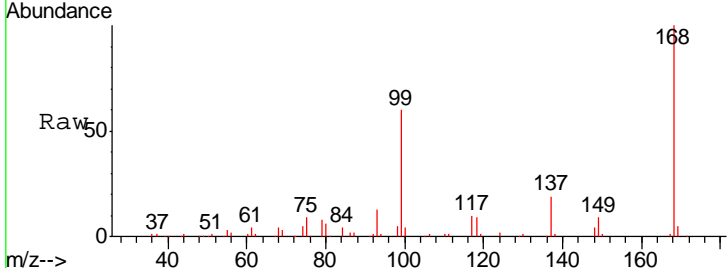




#1  
 Pentafluorobenzene  
 Concen: 50.000 ug/l  
 RT: 7.79 min Scan# 1018  
 Delta R.T. -0.00 min  
 Lab File: VY000137.D  
 Acq: 23 Sep 2019 17:44

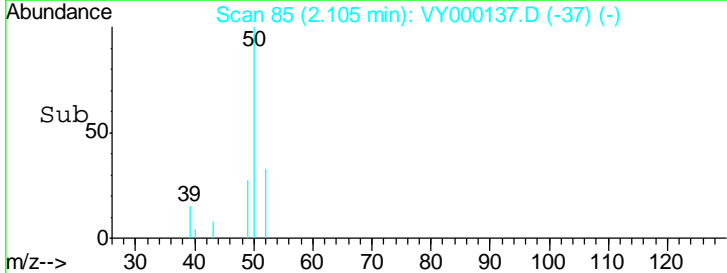
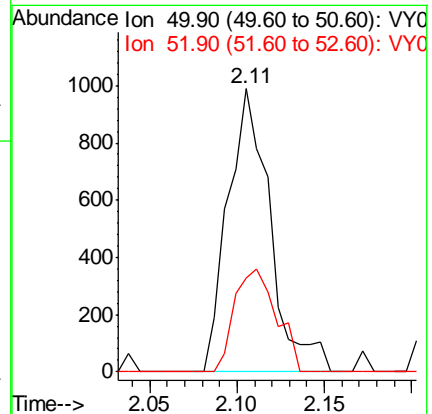
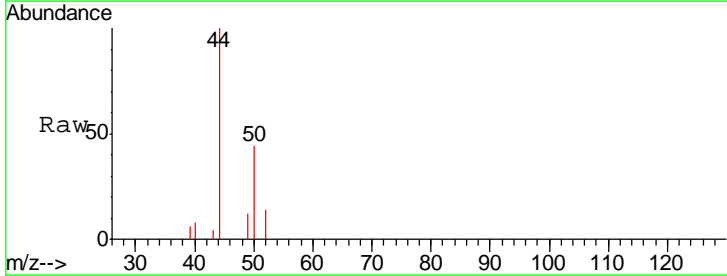
Instrument :  
 MSVOA\_Y  
 ClientSampled :  
 SB-7

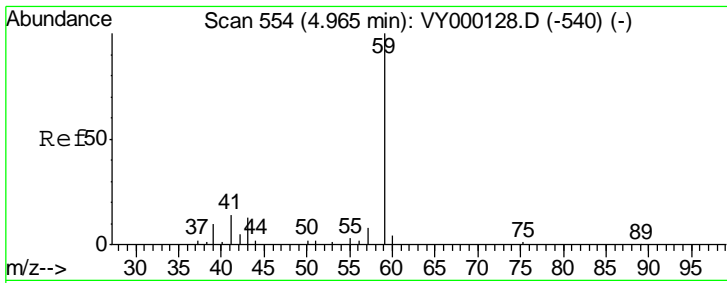
Tgt Ion: 168 Resp: 87113  
 Ion Ratio Lower Upper  
 168 100  
 99 59.8 49.9 74.9



#3  
 Chloromethane  
 Concen: Below Cal  
 RT: 2.11 min Scan# 85  
 Delta R.T. -0.01 min  
 Lab File: VY000137.D  
 Acq: 23 Sep 2019 17:44

Tgt Ion: 50 Resp: 1664  
 Ion Ratio Lower Upper  
 50 100  
 52 33.1 26.2 39.4

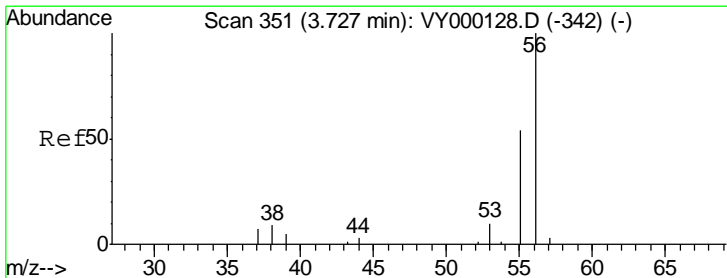
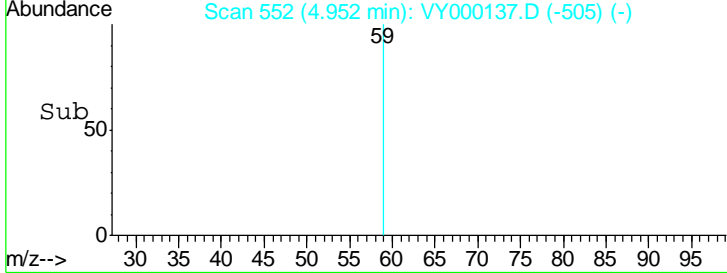
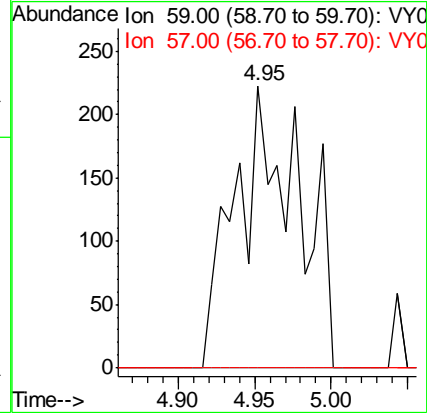
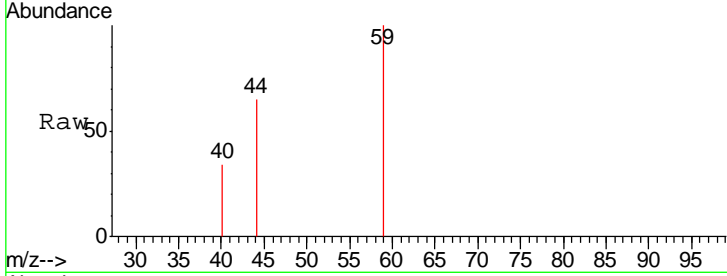




#11  
 Tert butyl alcohol  
 Concen: 6.152 ug/l  
 RT: 4.95 min Scan# 552  
 Delta R.T. -0.01 min  
 Lab File: VY000137.D  
 Acq: 23 Sep 2019 17:44

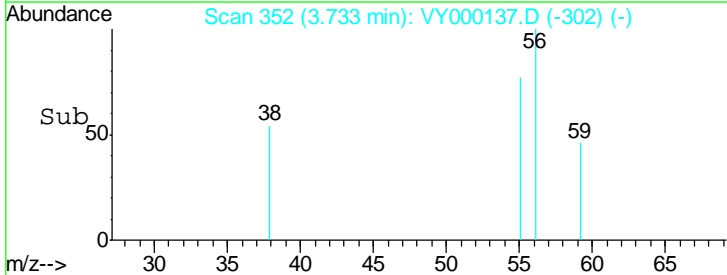
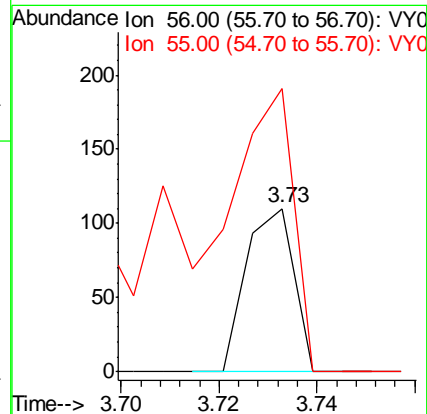
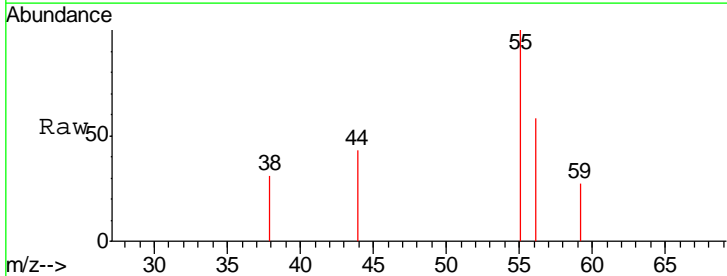
Instrument :  
 MSVOA\_Y  
 ClientSampled :  
 SB-7

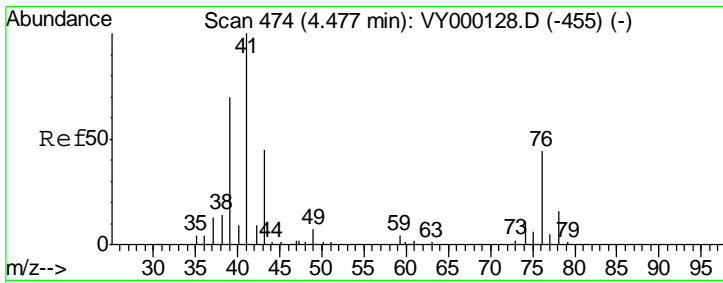
Tgt Ion: 59 Resp: 636  
 Ion Ratio Lower Upper  
 59 100  
 57 0.0 8.2 12.4#



#13  
 Acrolein  
 Concen: 1.762 ug/l  
 RT: 3.73 min Scan# 352  
 Delta R.T. 0.01 min  
 Lab File: VY000137.D  
 Acq: 23 Sep 2019 17:44

Tgt Ion: 56 Resp: 74  
 Ion Ratio Lower Upper  
 56 100  
 55 317.6 49.4 74.0#

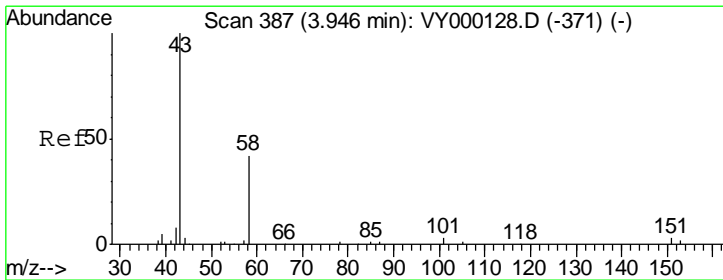
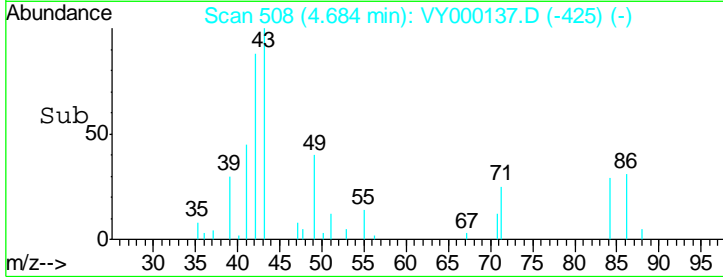
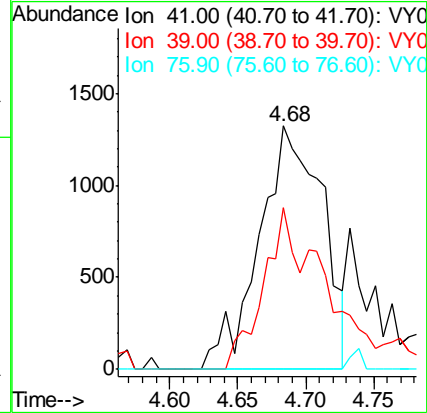
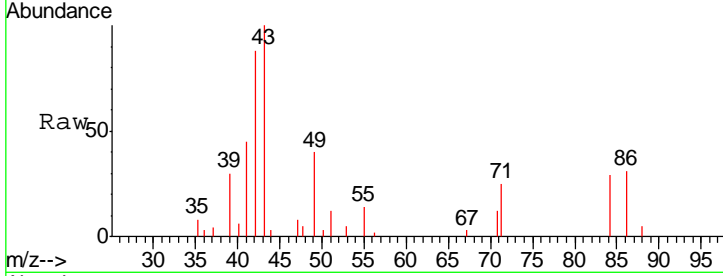




#14  
 Allyl chloride  
 Concen: 2.900 ug/l  
 RT: 4.68 min Scan# 508  
 Delta R.T. 0.21 min  
 Lab File: VY000137.D  
 Acq: 23 Sep 2019 17:44

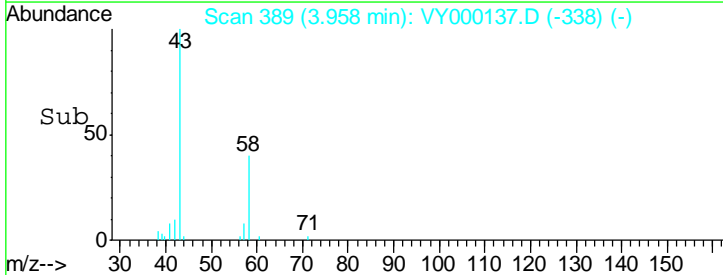
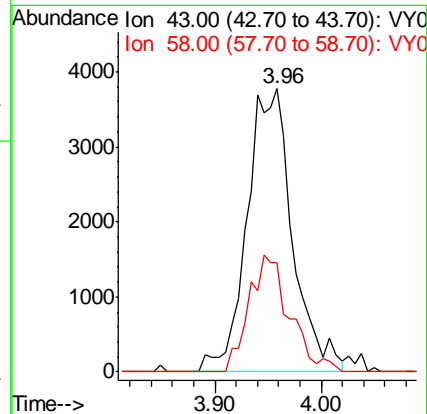
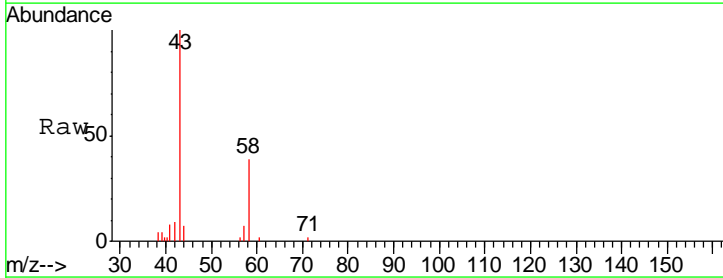
Instrument :  
 MSVOA\_Y  
 ClientSampled :  
 SB-7

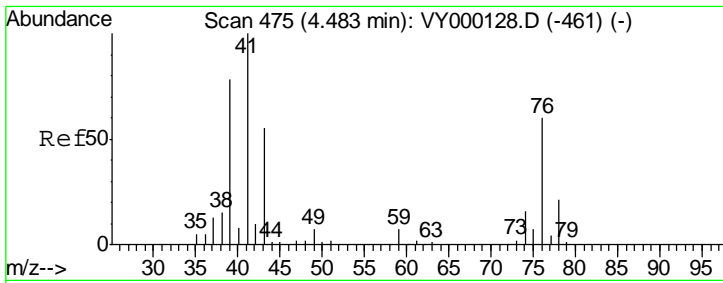
Tgt Ion	Resp	Lower	Upper
41	100		
39	35.3	52.7	79.1#
76	0.0	36.6	55.0#



#16  
 Acetone  
 Concen: 57.972 ug/l  
 RT: 3.96 min Scan# 389  
 Delta R.T. 0.01 min  
 Lab File: VY000137.D  
 Acq: 23 Sep 2019 17:44

Tgt Ion	Resp	Lower	Upper
43	100		
58	38.8	33.5	50.3

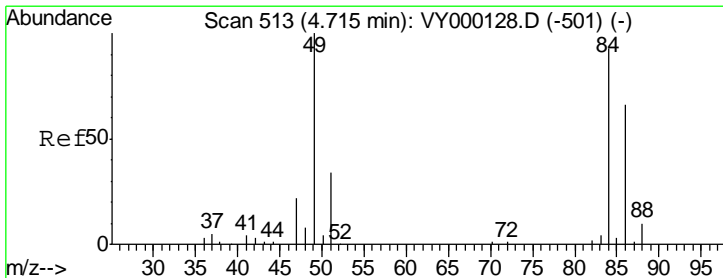
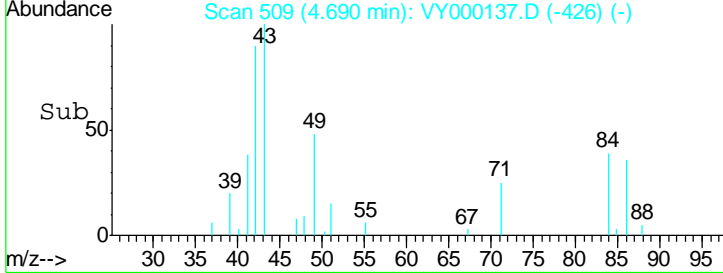
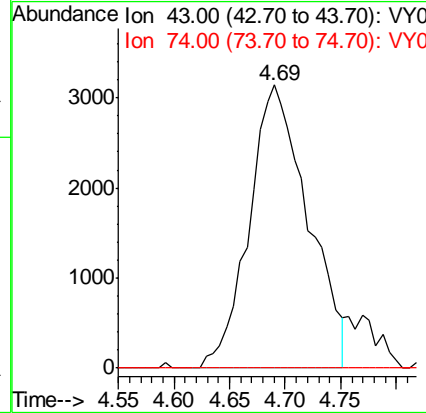
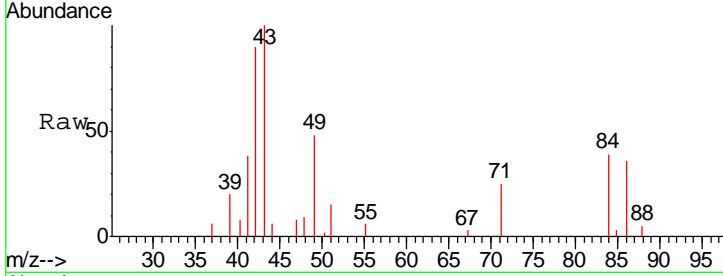




#18  
 Methyl Acetate  
 Concen: 16.184 ug/l  
 RT: 4.69 min Scan# 509  
 Delta R.T. 0.21 min  
 Lab File: VY000137.D  
 Acq: 23 Sep 2019 17:44

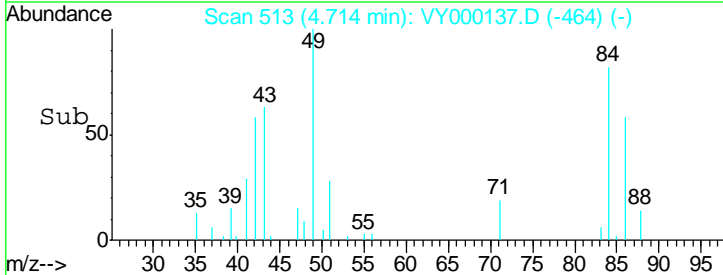
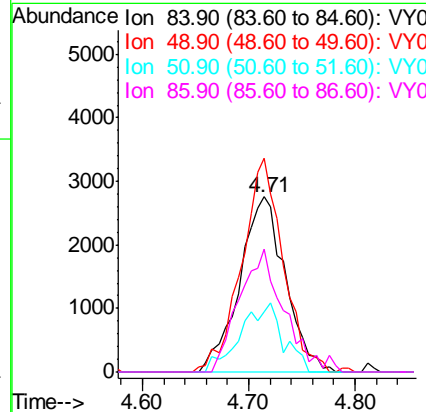
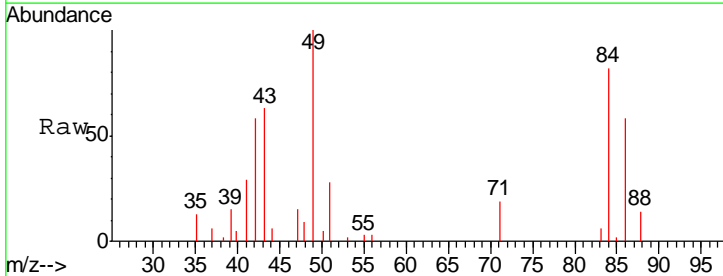
**Instrument :**  
 MSVOA\_Y  
**ClientSampled :**  
 SB-7

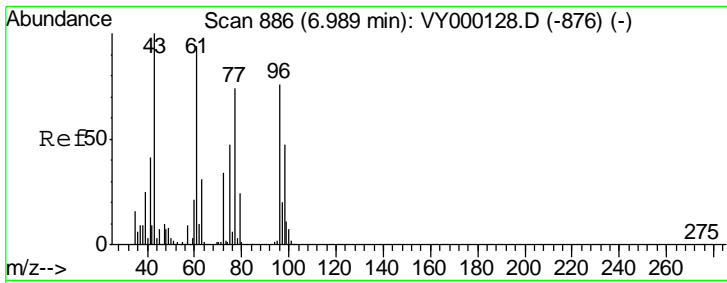
Tgt Ion: 43 Resp: 11541  
 Ion Ratio Lower Upper  
 43 100  
 74 0.0 22.7 34.1#



#20  
 Methylene Chloride  
 Concen: 6.323 ug/l  
 RT: 4.71 min Scan# 513  
 Delta R.T. -0.00 min  
 Lab File: VY000137.D  
 Acq: 23 Sep 2019 17:44

Tgt Ion: 84 Resp: 8271  
 Ion Ratio Lower Upper  
 84 100  
 49 122.1 85.8 128.6  
 51 34.2 29.2 43.8  
 86 70.5 56.8 85.2

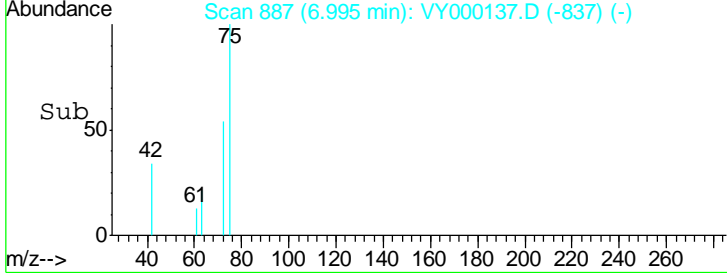
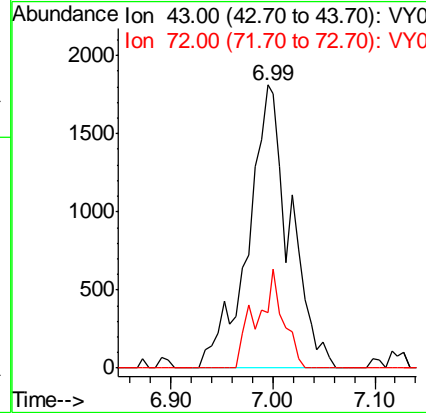
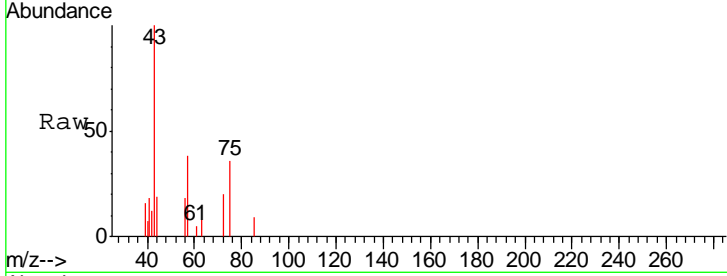




#25  
 2-Butanone  
 Concen: 14.298 ug/l  
 RT: 6.99 min Scan# 887  
 Delta R.T. 0.01 min  
 Lab File: VY000137.D  
 Acq: 23 Sep 2019 17:44

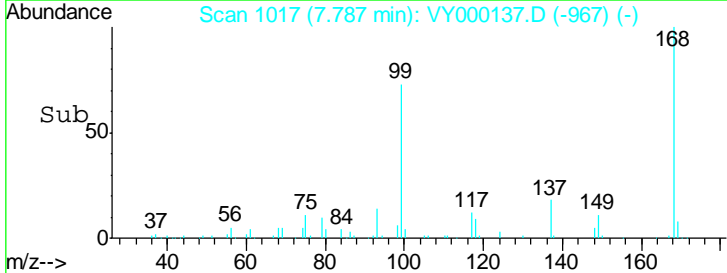
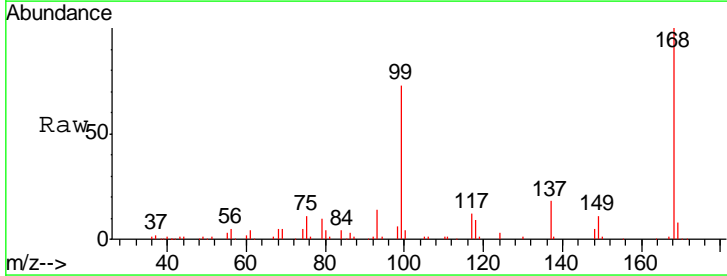
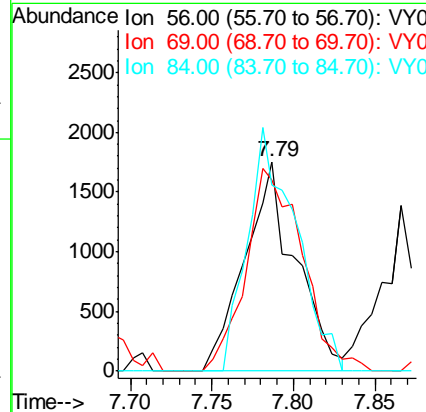
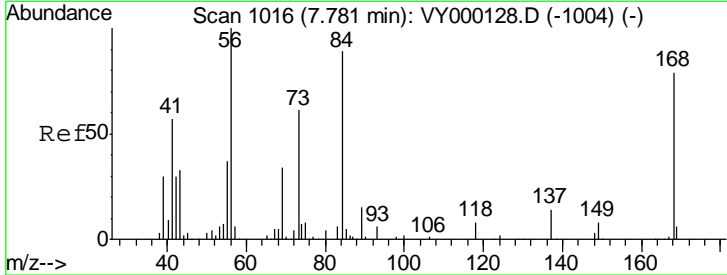
**Instrument :**  
 MSVOA\_Y  
**ClientSampled :**  
 SB-7

Tgt Ion: 43 Resp: 5164  
 Ion Ratio Lower Upper  
 43 100  
 72 19.7 27.0 40.6#

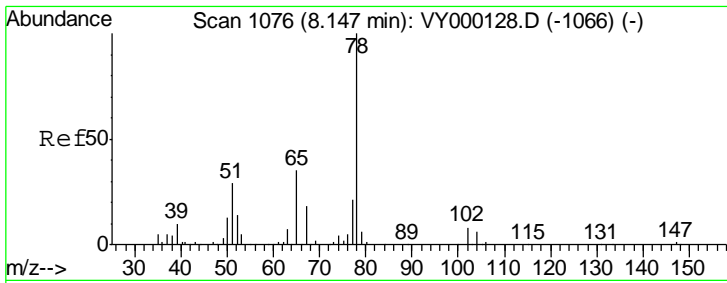


#31  
 Cyclohexane  
 Concen: 1.949 ug/l  
 RT: 7.79 min Scan# 1017  
 Delta R.T. 0.01 min  
 Lab File: VY000137.D  
 Acq: 23 Sep 2019 17:44

Tgt Ion: 56 Resp: 3797  
 Ion Ratio Lower Upper  
 56 100  
 69 91.2 27.1 40.7#  
 84 88.6 71.3 106.9



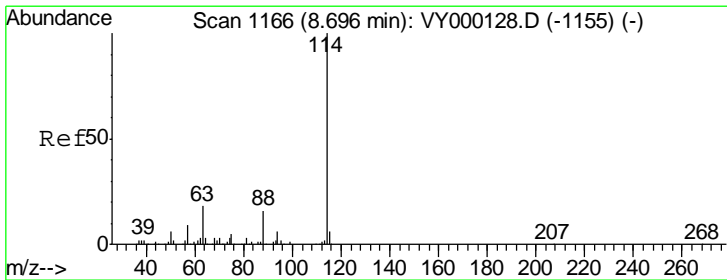
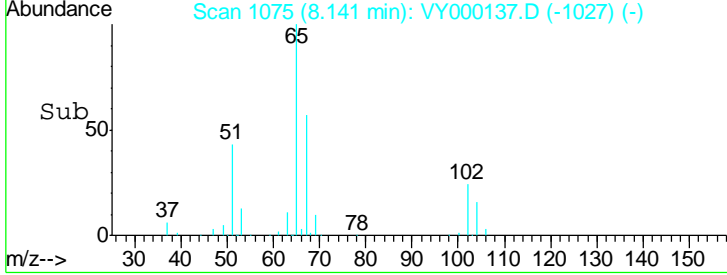
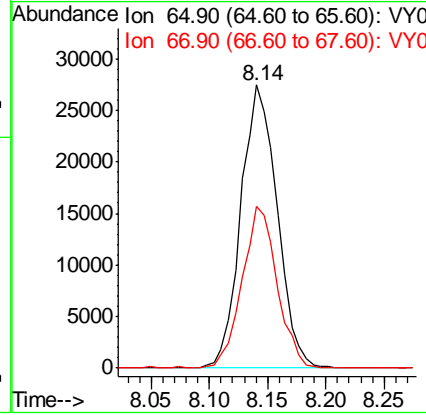
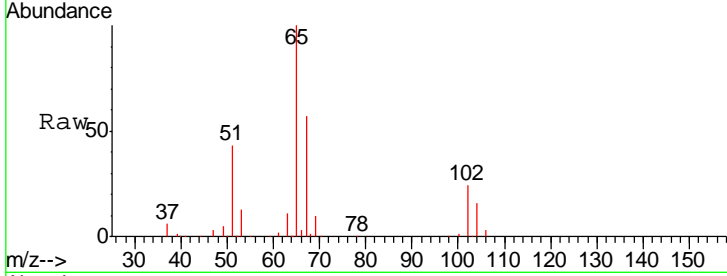




#33  
 1,2-Dichloroethane-d4  
 Concen: 59.525 ug/l  
 RT: 8.14 min Scan# 1075  
 Delta R.T. -0.01 min  
 Lab File: VY000137.D  
 Acq: 23 Sep 2019 17:44

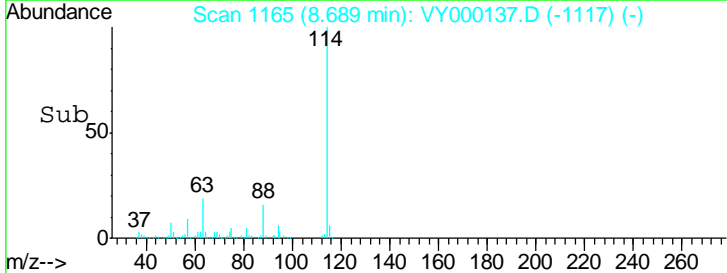
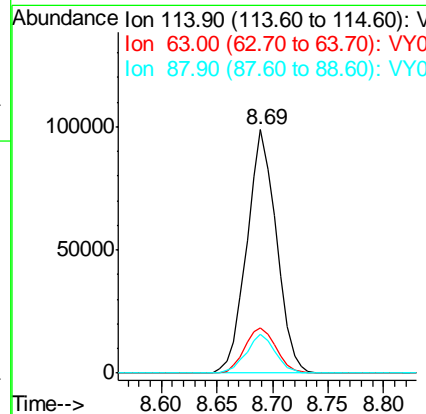
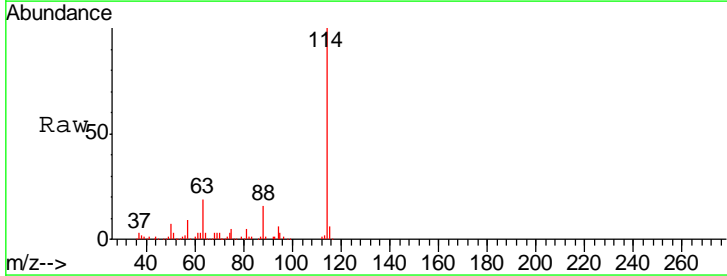
Instrument : MSVOA\_Y  
 ClientSampled : SB-7

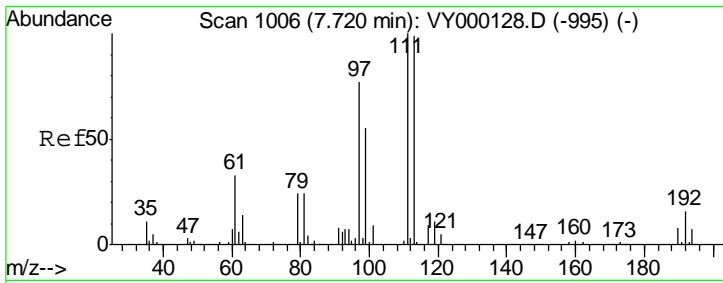
Tgt Ion	Resp	Lower	Upper
65	100		
67	55.0	0.0	109.6



#34  
 1,4-Difluorobenzene  
 Concen: 50.000 ug/l  
 RT: 8.69 min Scan# 1165  
 Delta R.T. -0.01 min  
 Lab File: VY000137.D  
 Acq: 23 Sep 2019 17:44

Tgt Ion	Resp	Lower	Upper
114	100		
63	18.7	0.0	35.6
88	15.9	0.0	31.8

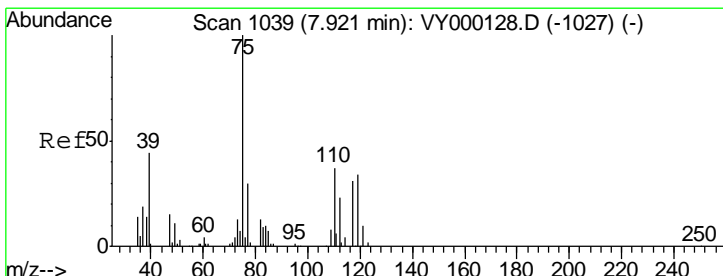
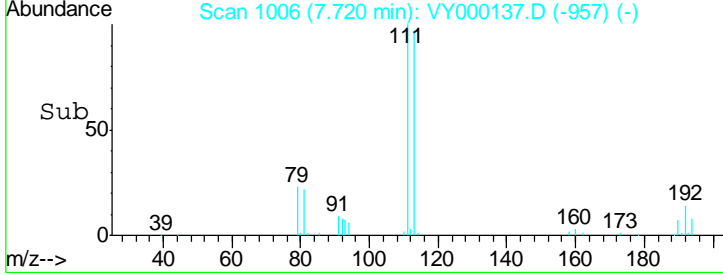
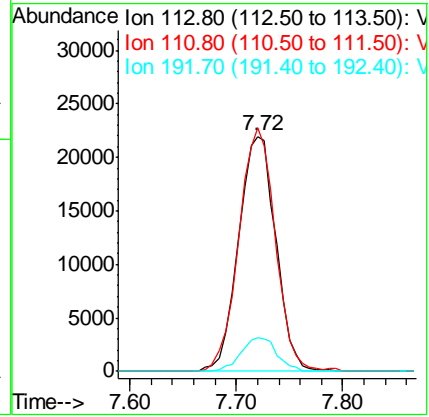
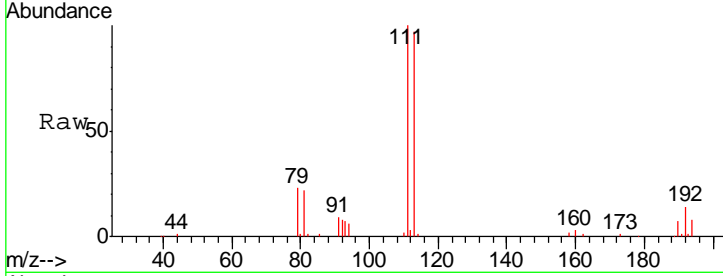




#35  
 Dibromofluoromethane  
 Concen: 51.415 ug/l  
 RT: 7.72 min Scan# 1006  
 Delta R.T. -0.00 min  
 Lab File: VY000137.D  
 Acq: 23 Sep 2019 17:44

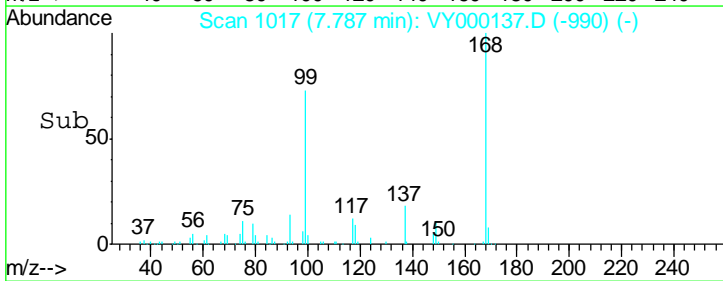
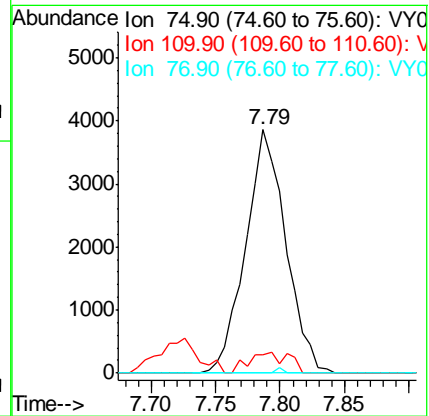
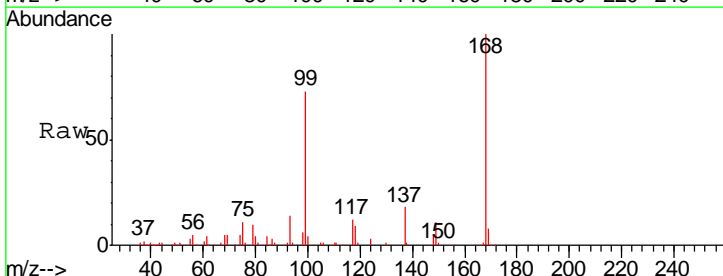
Instrument :  
 MSVOA\_Y  
 ClientSampled :  
 SB-7

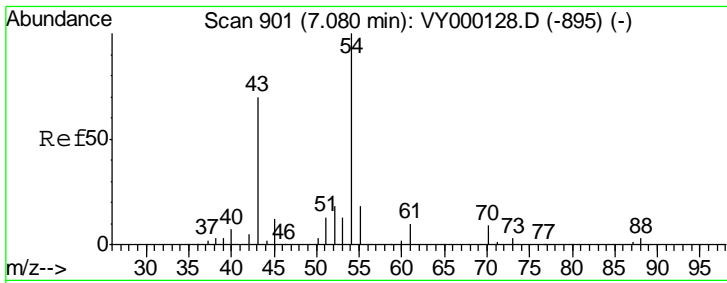
Tgt Ion	Resp	Lower	Upper
113	53970		
113	100		
111	101.3	83.0	124.4
192	14.0	13.5	20.3



#36  
 1,1-Dichloropropene  
 Concen: 4.929 ug/l  
 RT: 7.79 min Scan# 1017  
 Delta R.T. -0.13 min  
 Lab File: VY000137.D  
 Acq: 23 Sep 2019 17:44

Tgt Ion	Resp	Lower	Upper
75	8344		
75	100		
110	8.5	19.1	57.3#
77	0.3	24.7	37.1#



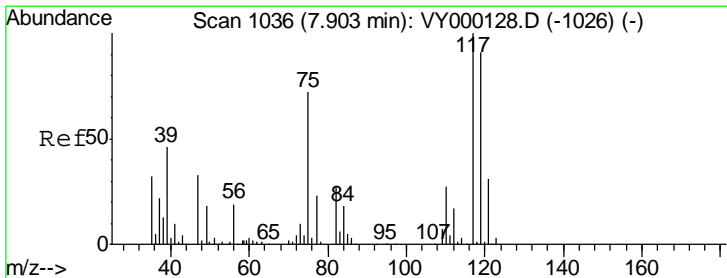
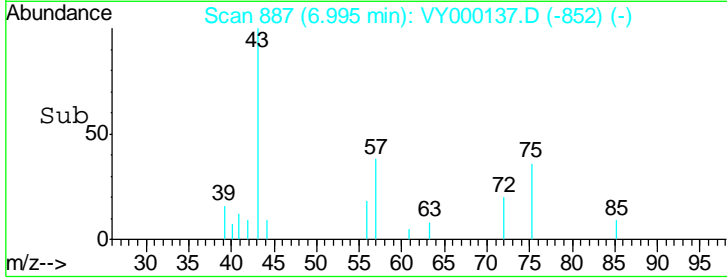
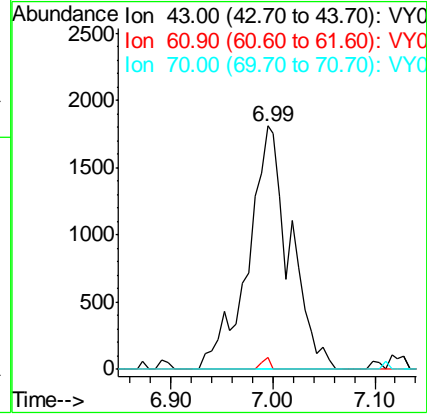
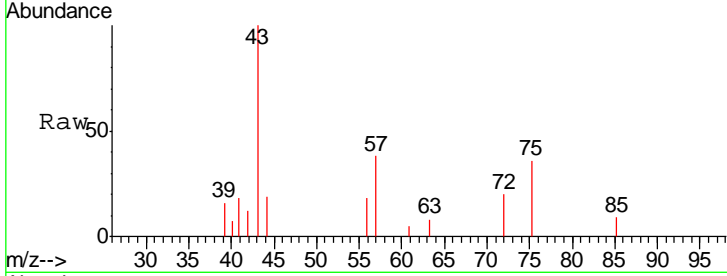


#37  
 Ethyl Acetate  
 Concen: 5.777 ug/l  
 RT: 6.99 min Scan# 887  
 Delta R.T. -0.09 min  
 Lab File: VY000137.D  
 Acq: 23 Sep 2019 17:44

Instrument :  
 MSVOA\_Y  
 ClientSampled :  
 SB-7

Tgt Ion: 43 Resp: 5164

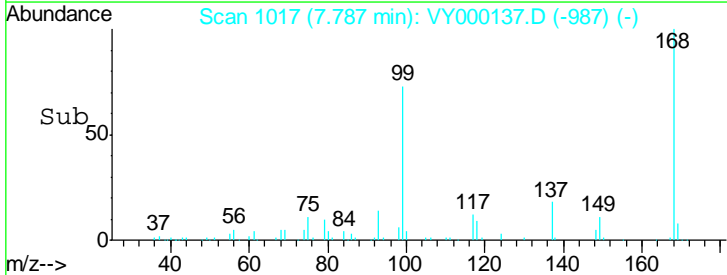
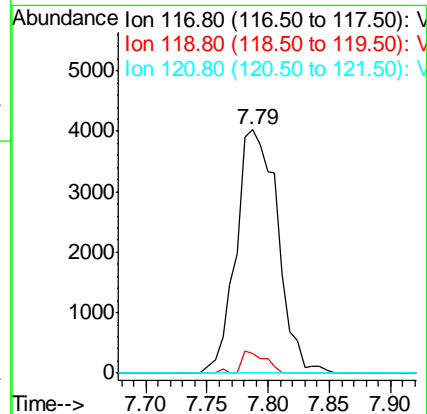
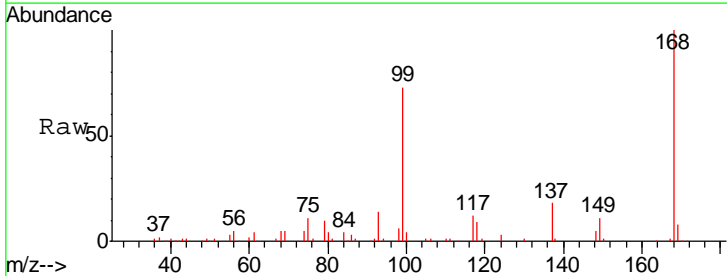
Ion	Ratio	Lower	Upper
43	100		
61	1.0	12.1	18.1#
70	0.0	10.0	15.0#

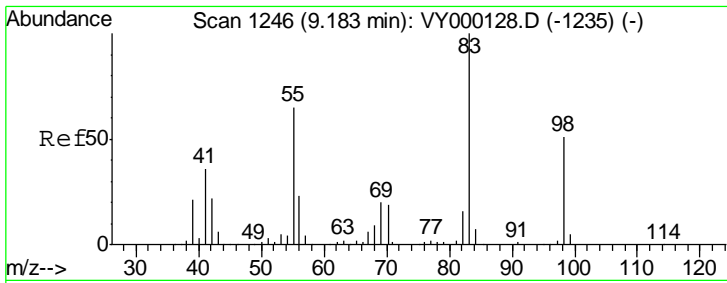


#38  
 Carbon Tetrachloride  
 Concen: 6.540 ug/l  
 RT: 7.79 min Scan# 1017  
 Delta R.T. -0.12 min  
 Lab File: VY000137.D  
 Acq: 23 Sep 2019 17:44

Tgt Ion: 117 Resp: 9501

Ion	Ratio	Lower	Upper
117	100		
119	8.1	72.6	108.8#
121	0.0	24.3	36.5#

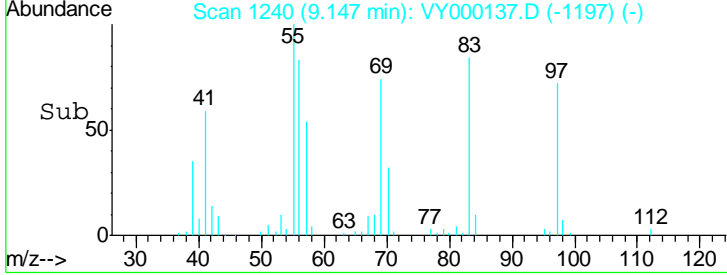
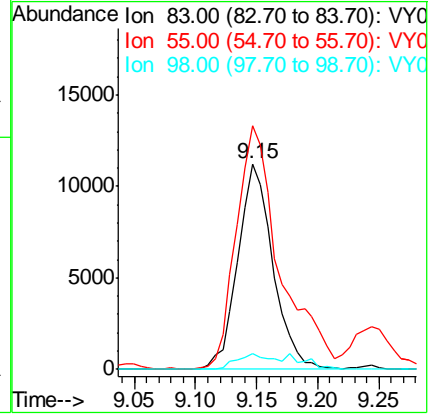
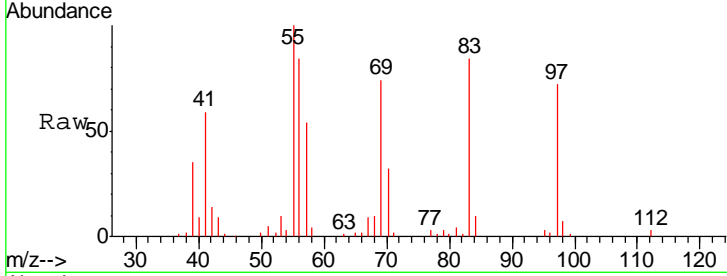




#39  
 Methylcyclohexane  
 Concen: 9.553 ug/l  
 RT: 9.15 min Scan# 1240  
 Delta R.T. -0.04 min  
 Lab File: VY000137.D  
 Acq: 23 Sep 2019 17:44

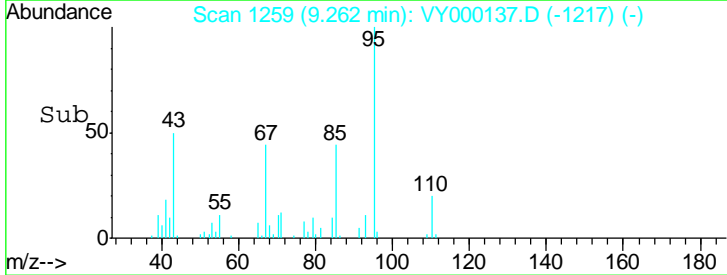
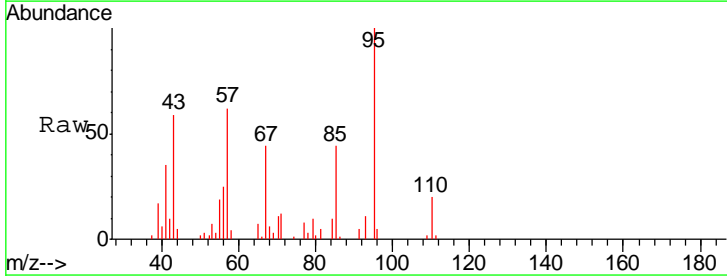
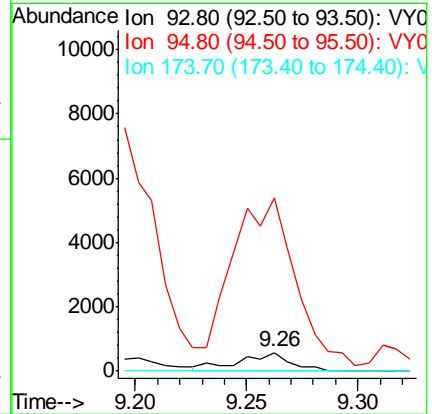
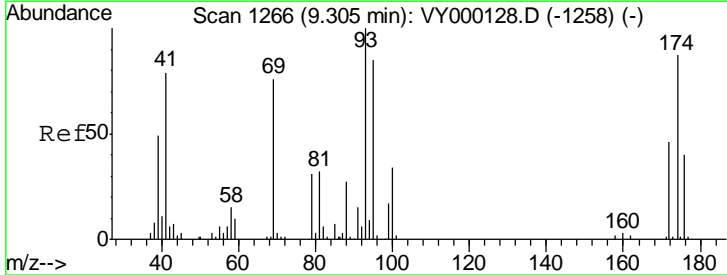
Instrument :  
 MSVOA\_Y  
 ClientSampled :  
 SB-7

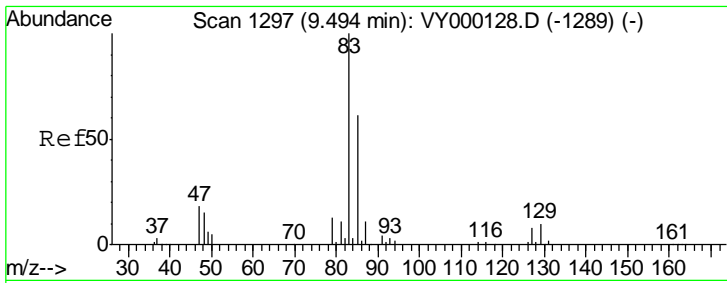
Tgt Ion	Resp	Lower	Upper
83	100		
55	118.5	52.3	78.5#
98	7.8	40.6	61.0#



#46  
 Dibromomethane  
 Concen: 1.362 ug/l  
 RT: 9.26 min Scan# 1259  
 Delta R.T. -0.04 min  
 Lab File: VY000137.D  
 Acq: 23 Sep 2019 17:44

Tgt Ion	Resp	Lower	Upper
93	100		
95	1130.5	68.6	103.0#
174	0.0	69.4	104.0#



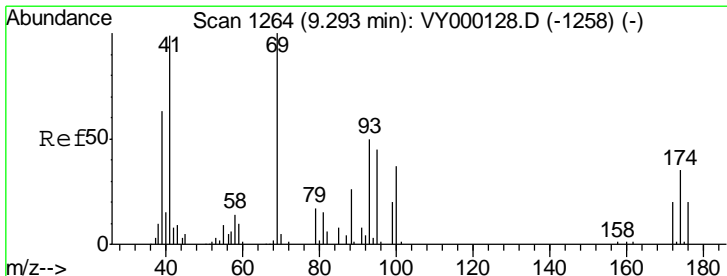
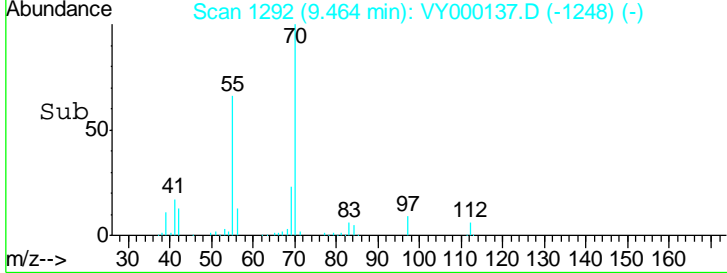
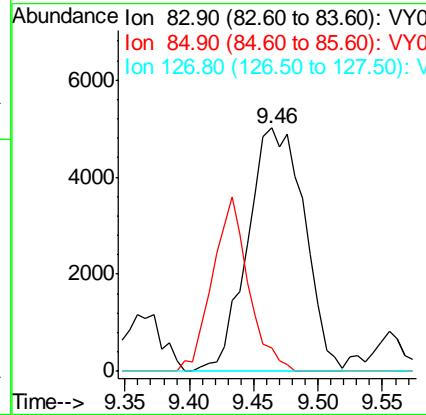
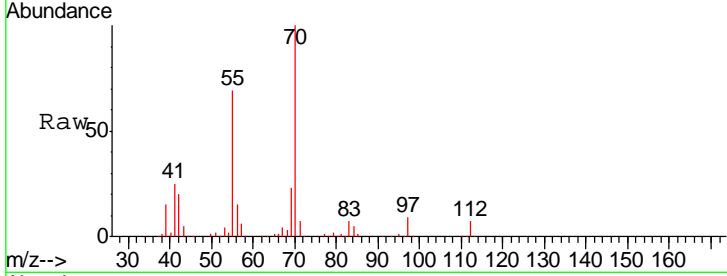


#47

Bromodichloromethane  
 Concen: 9.524 ug/l  
 RT: 9.46 min Scan# 1292  
 Delta R.T. -0.03 min  
 Lab File: VY000137.D  
 Acq: 23 Sep 2019 17:44

Instrument :  
 MSVOA\_Y  
 ClientSampled :  
 SB-7

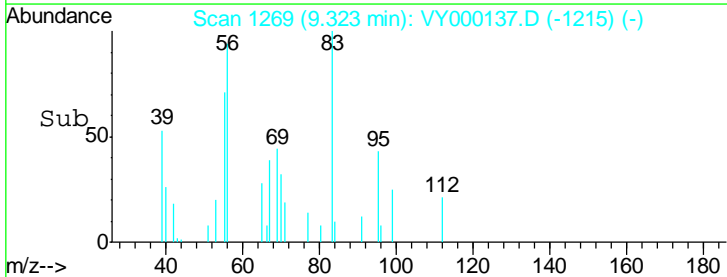
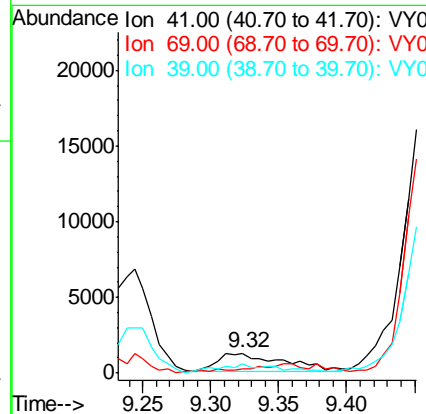
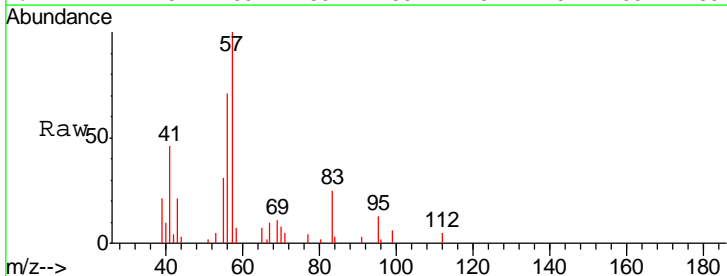
Tgt Ion	Resp	Lower	Upper
83	15303		
85	9.4	48.6	73.0#
127	0.0	6.2	9.4#

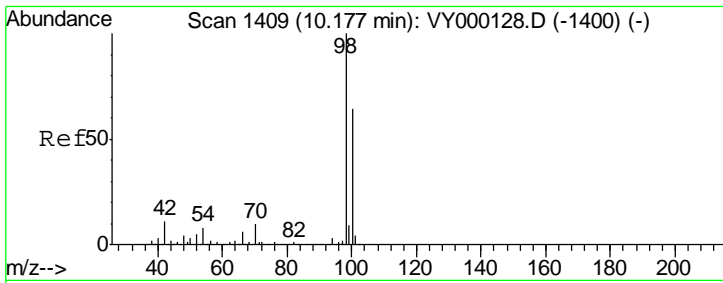


#48

Methyl methacrylate  
 Concen: 5.239 ug/l  
 RT: 9.32 min Scan# 1269  
 Delta R.T. 0.03 min  
 Lab File: VY000137.D  
 Acq: 23 Sep 2019 17:44

Tgt Ion	Resp	Lower	Upper
41	4003		
69	0.0	81.0	121.6#
39	25.1	53.2	79.8#

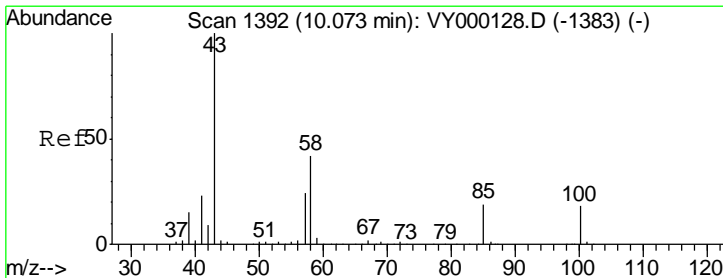
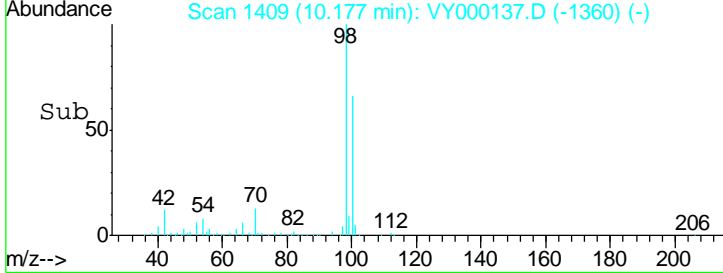
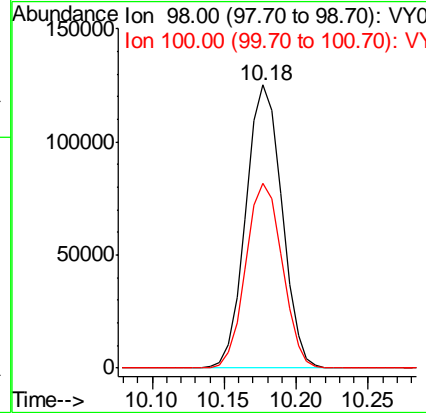
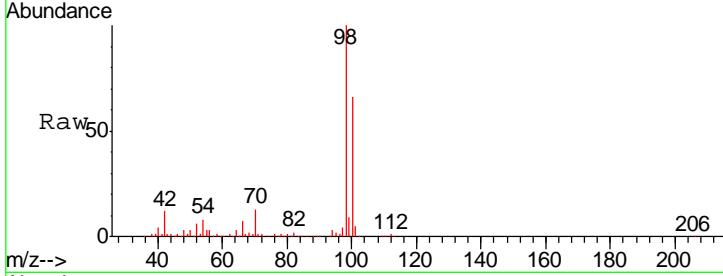




#50  
 Toluene-d8  
 Concen: 51.419 ug/l  
 RT: 10.18 min Scan# 1409  
 Delta R.T. -0.00 min  
 Lab File: VY000137.D  
 Acq: 23 Sep 2019 17:44

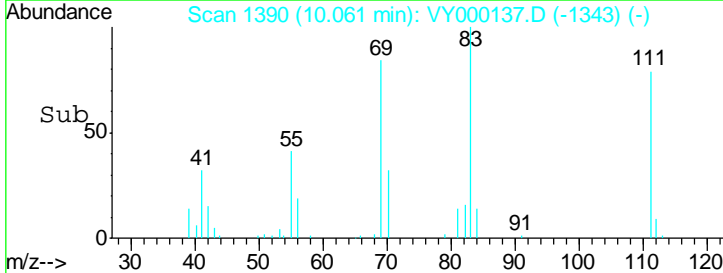
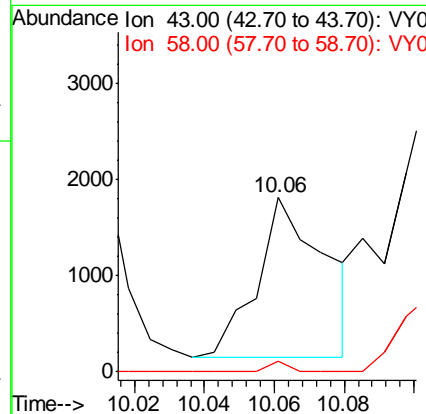
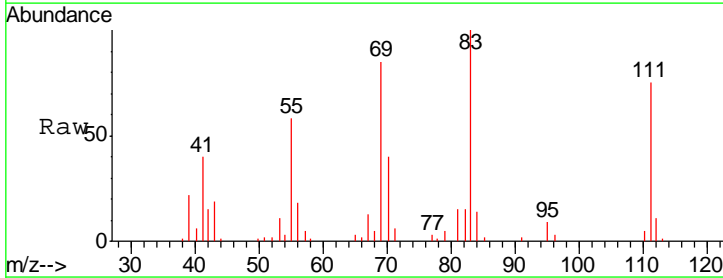
Instrument : MSVOA\_Y  
 ClientSampled : SB-7

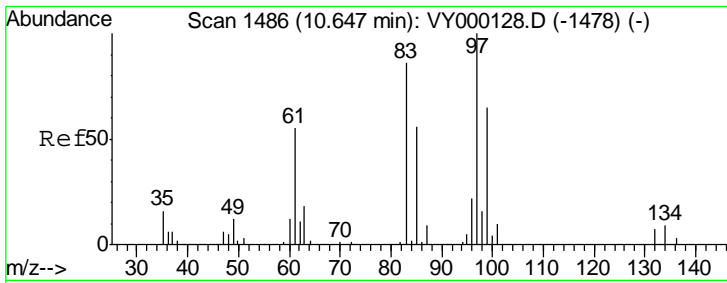
Tgt Ion: 98 Resp: 217287  
 Ion Ratio Lower Upper  
 98 100  
 100 66.1 52.7 79.1



#51  
 4-Methyl-2-Pentanone  
 Concen: 2.462 ug/l  
 RT: 10.06 min Scan# 1390  
 Delta R.T. -0.01 min  
 Lab File: VY000137.D  
 Acq: 23 Sep 2019 17:44

Tgt Ion: 43 Resp: 2243  
 Ion Ratio Lower Upper  
 43 100  
 58 0.0 33.0 49.6#

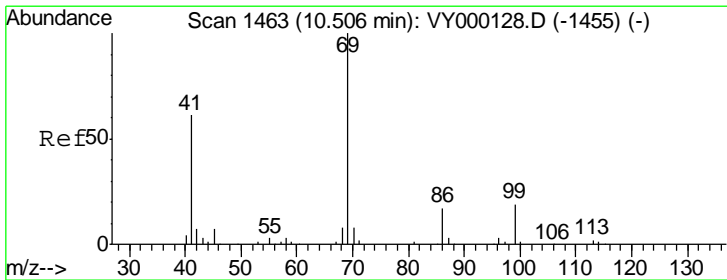
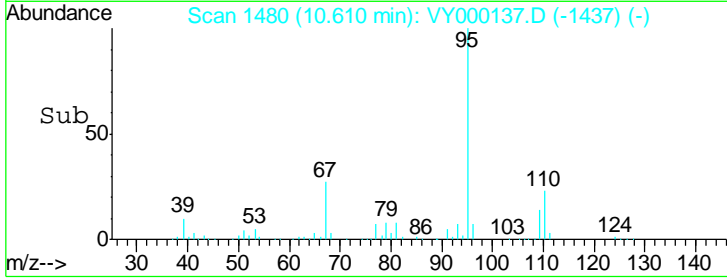
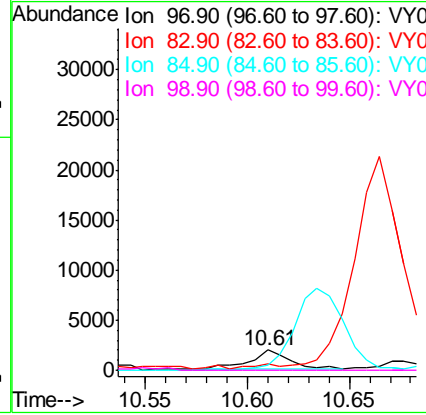
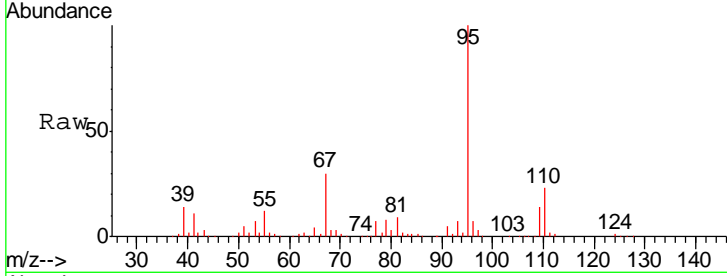




#55  
 1,1,2-Trichloroethane  
 Concen: 2.639 ug/l  
 RT: 10.61 min Scan# 1480  
 Delta R.T. -0.04 min  
 Lab File: VY000137.D  
 Acq: 23 Sep 2019 17:44

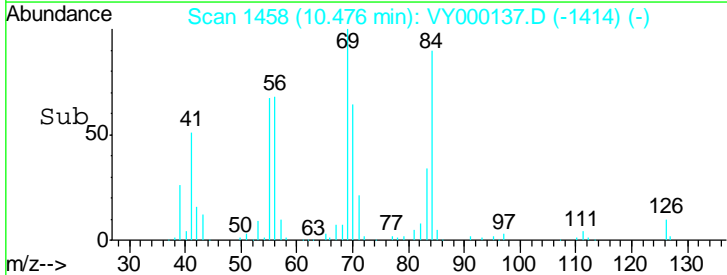
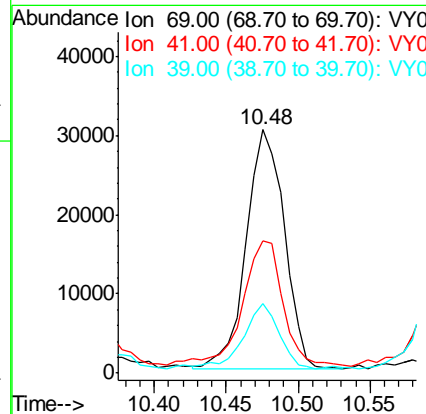
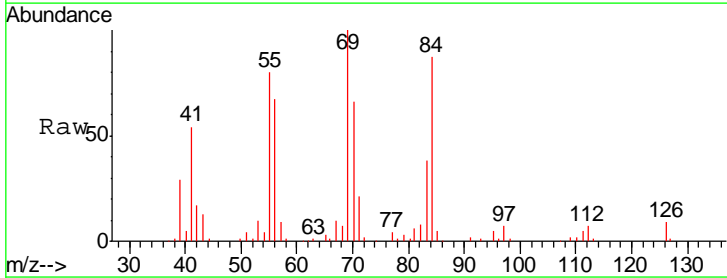
Instrument : MSVOA\_Y  
 ClientSampled : SB-7

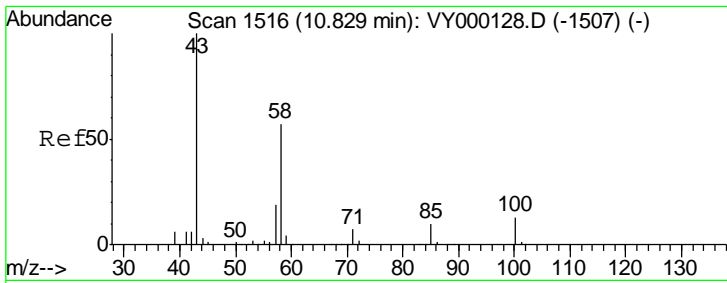
Tgt Ion	Resp	Lower	Upper
97	100		
83	20.9	68.8	103.2#
85	29.8	44.9	67.3#
99	0.0	52.1	78.1#



#56  
 Ethyl methacrylate  
 Concen: 39.394 ug/l  
 RT: 10.48 min Scan# 1458  
 Delta R.T. -0.03 min  
 Lab File: VY000137.D  
 Acq: 23 Sep 2019 17:44

Tgt Ion	Resp	Lower	Upper
69	100		
41	56.4	47.9	71.9
39	26.8	27.4	41.0#

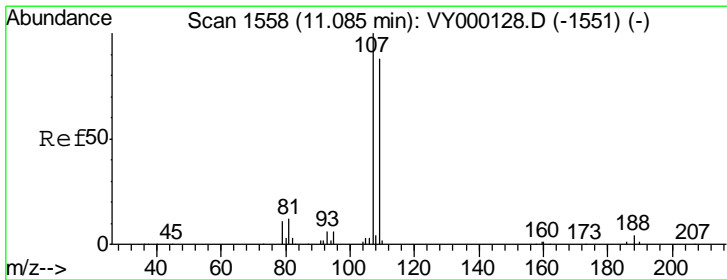
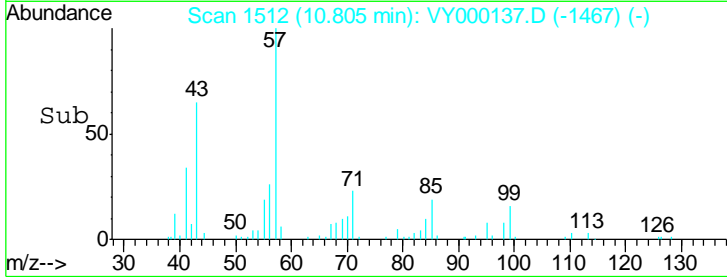
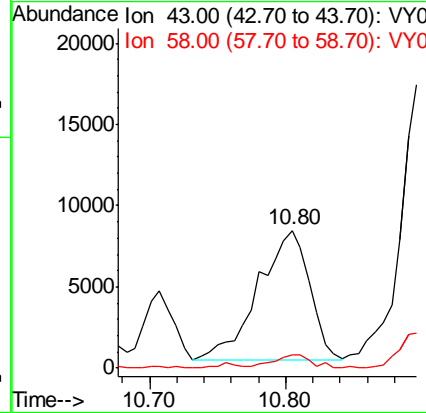
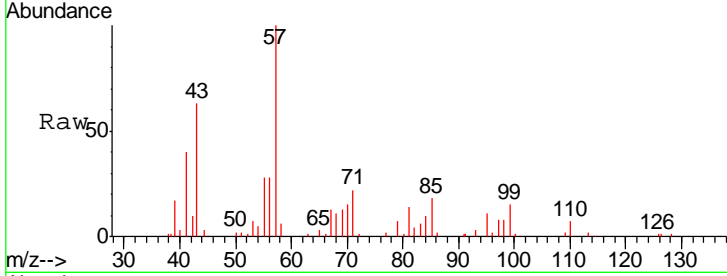




#59  
 2-Hexanone  
 Concen: 32.953 ug/l  
 RT: 10.80 min Scan# 1512  
 Delta R.T. -0.02 min  
 Lab File: VY000137.D  
 Acq: 23 Sep 2019 17:44

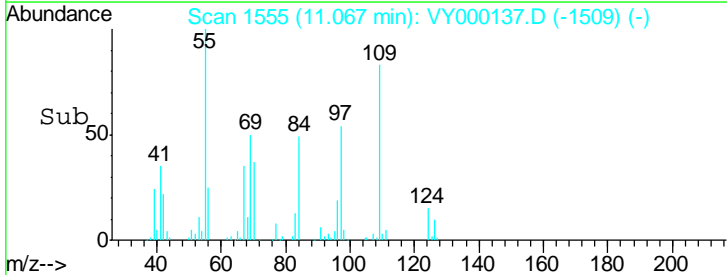
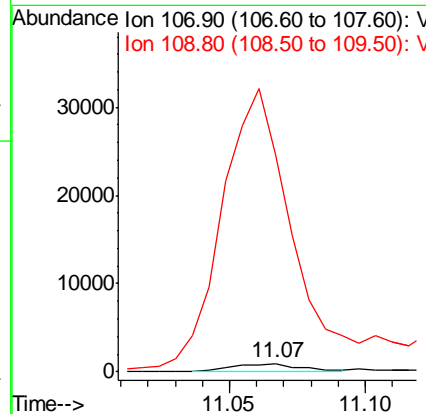
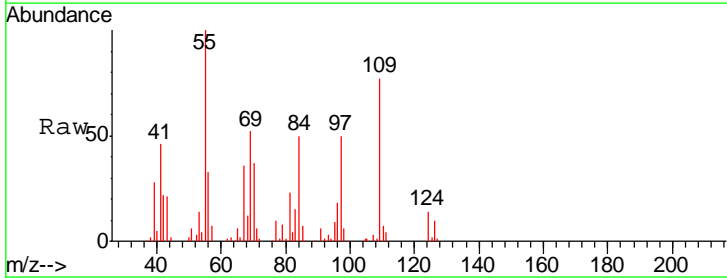
Instrument :  
 MSVOA\_Y  
 ClientSampled :  
 SB-7

Tgt Ion: 43 Resp: 21031  
 Ion Ratio Lower Upper  
 43 100  
 58 7.5 29.1 87.3#

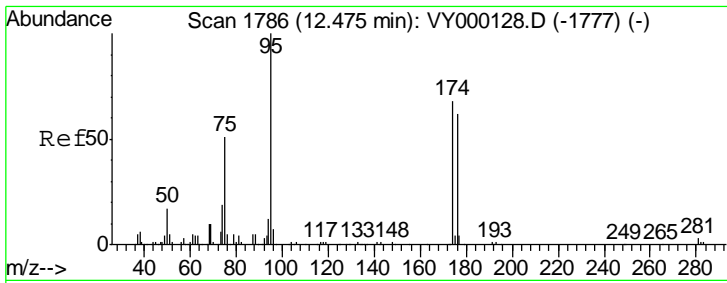


#61  
 1,2-Dibromoethane  
 Concen: 1.832 ug/l  
 RT: 11.07 min Scan# 1555  
 Delta R.T. -0.02 min  
 Lab File: VY000137.D  
 Acq: 23 Sep 2019 17:44

Tgt Ion: 107 Resp: 1730  
 Ion Ratio Lower Upper  
 107 100  
 109 3467.6 74.0 111.0#



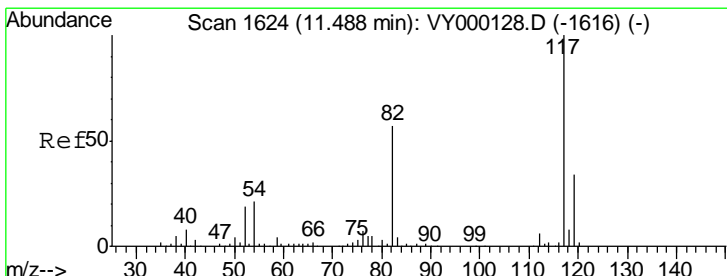
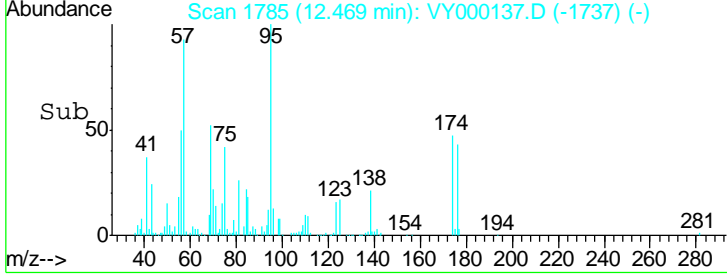
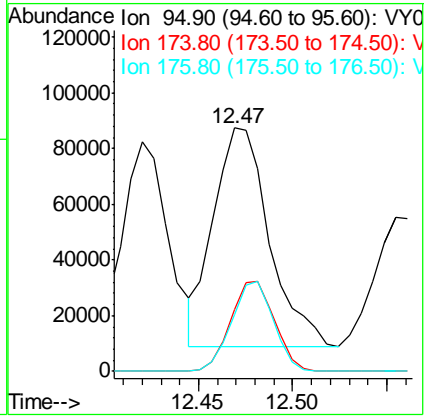
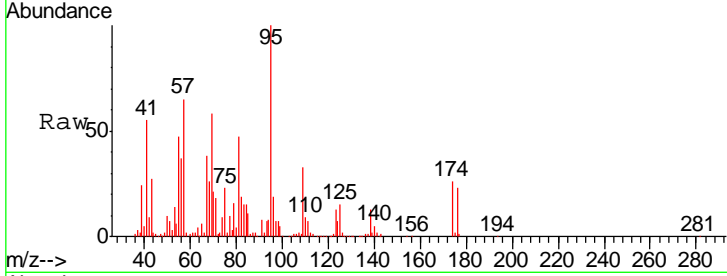




#62  
 4-Bromofluorobenzene  
 Concen: 103.496 ug/l  
 RT: 12.47 min Scan# 1785  
 Delta R.T. -0.01 min  
 Lab File: VY000137.D  
 Acq: 23 Sep 2019 17:44

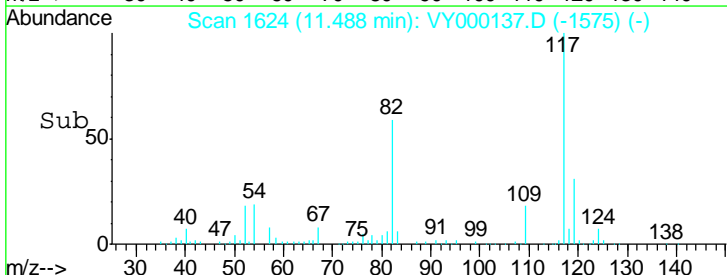
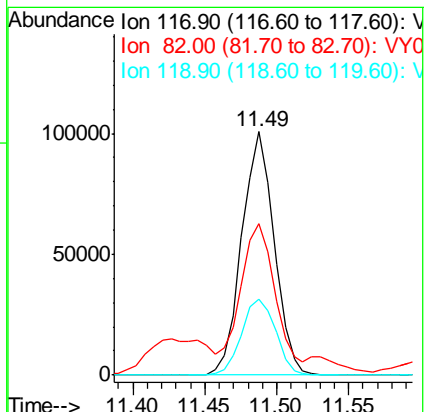
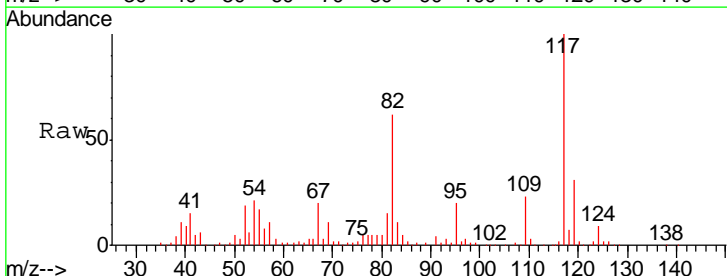
Instrument : MSVOA\_Y  
 Client Sampled : SB-7

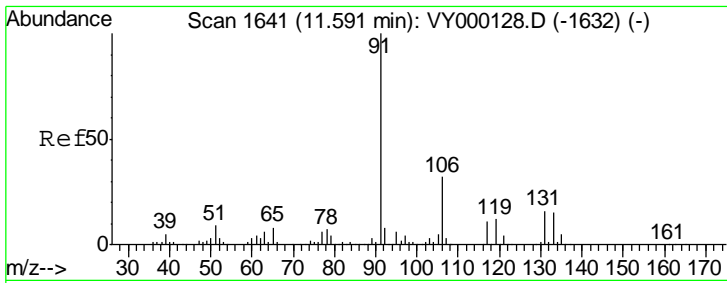
Tgt Ion	Resp	Lower	Upper
95	160849		
174	32.6	0.0	140.8
176	31.0	0.0	135.0



#63  
 Chlorobenzene-d5  
 Concen: 50.000 ug/l  
 RT: 11.49 min Scan# 1624  
 Delta R.T. -0.00 min  
 Lab File: VY000137.D  
 Acq: 23 Sep 2019 17:44

Tgt Ion	Resp	Lower	Upper
117	156698		
82	57.9	45.5	68.3
119	31.0	27.3	40.9

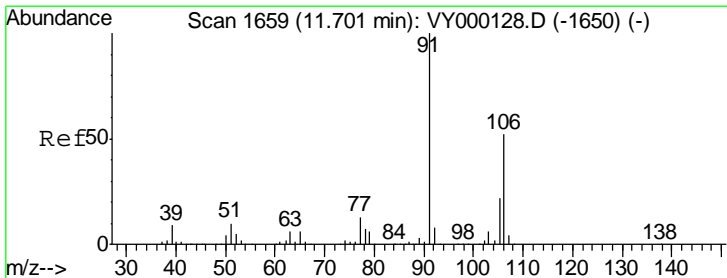
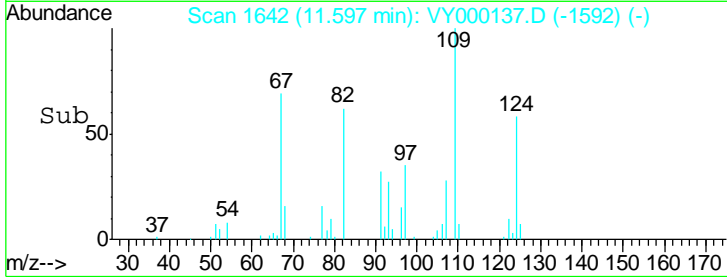
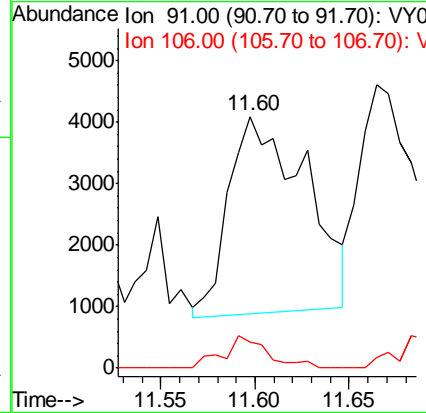
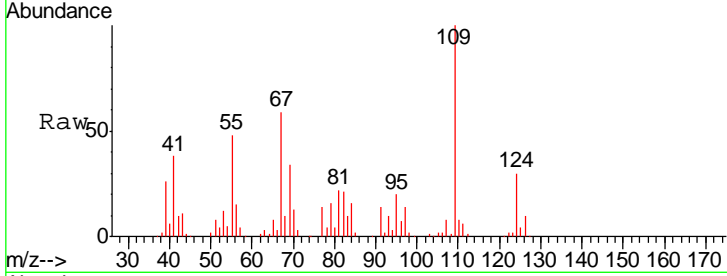




#67  
 Ethyl Benzene  
 Concen: 1.574 ug/l  
 RT: 11.60 min Scan# 1642  
 Delta R.T. 0.01 min  
 Lab File: VY000137.D  
 Acq: 23 Sep 2019 17:44

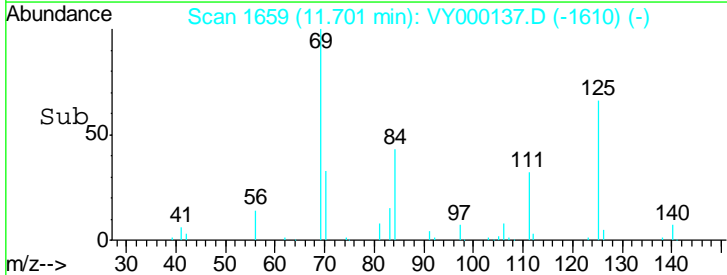
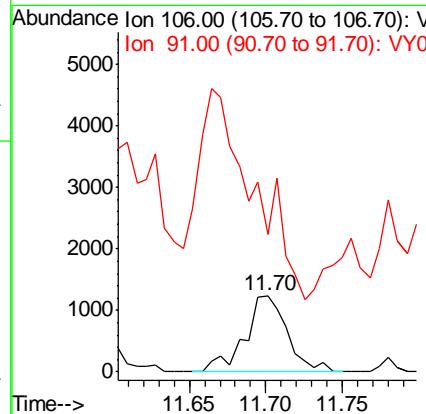
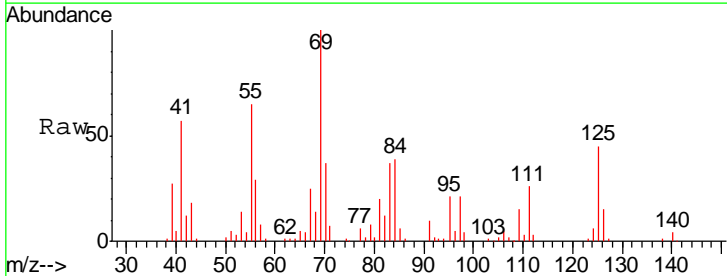
Instrument : MSVOA\_Y  
 ClientSampled : SB-7

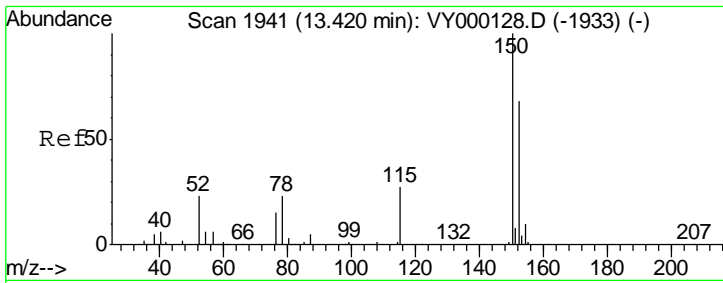
Tgt Ion: 91 Resp: 9103  
 Ion Ratio Lower Upper  
 91 100  
 106 13.8 25.6 38.4#



#68  
 m/p-Xylenes  
 Concen: 1.064 ug/l  
 RT: 11.70 min Scan# 1659  
 Delta R.T. -0.00 min  
 Lab File: VY000137.D  
 Acq: 23 Sep 2019 17:44

Tgt Ion: 106 Resp: 2372  
 Ion Ratio Lower Upper  
 106 100  
 91 0.0 154.6 232.0#

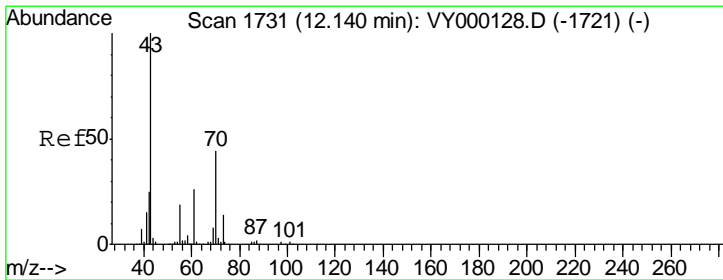
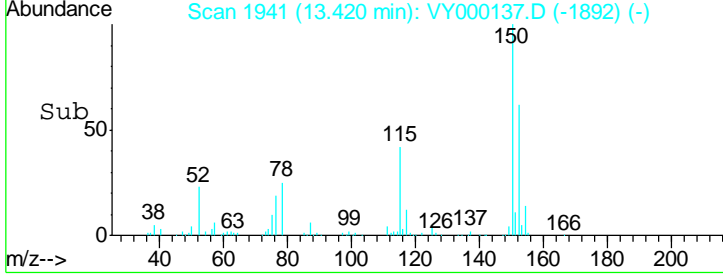
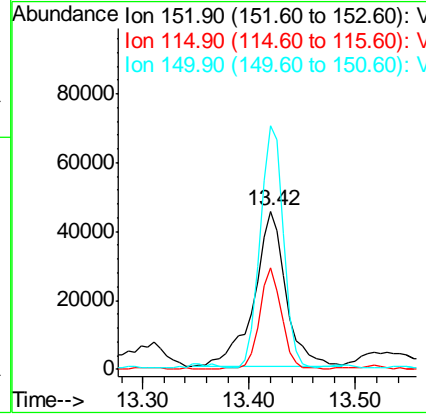
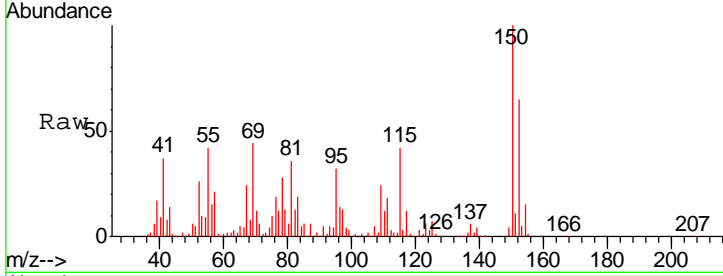




#72  
 1,4-Dichlorobenzene-d4  
 Concen: 50.000 ug/l  
 RT: 13.42 min Scan# 1941  
 Delta R.T. -0.00 min  
 Lab File: VY000137.D  
 Acq: 23 Sep 2019 17:44

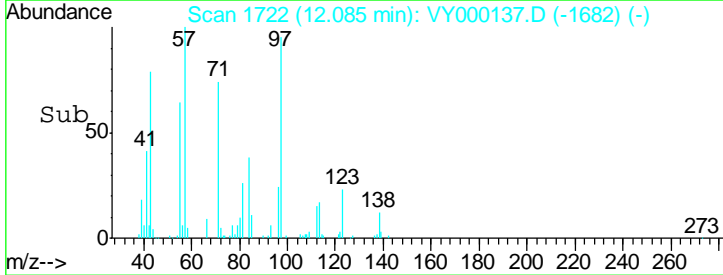
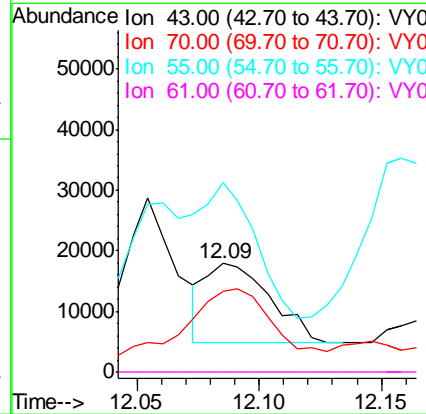
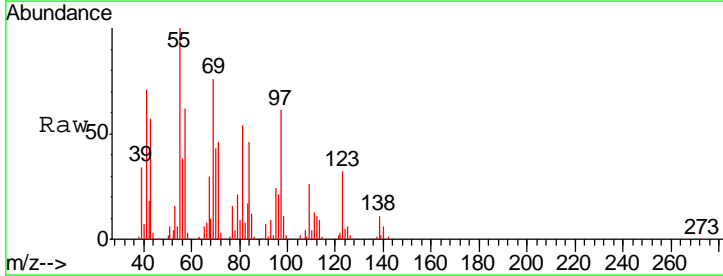
Instrument :  
 MSVOA\_Y  
 ClientSampled :  
 SB-7

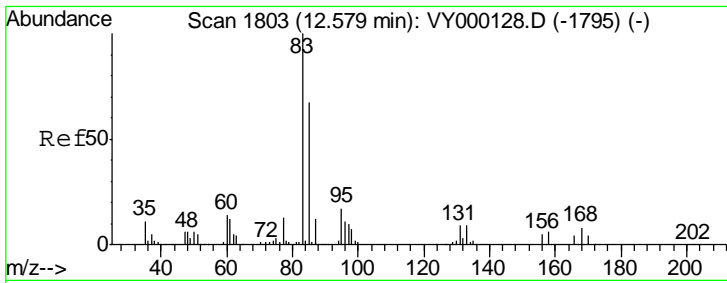
Tgt Ion	Resp	Lower	Upper
152	100		
115	45.7	30.8	92.3
150	115.1	0.0	354.6



#74  
 N-amyl acetate  
 Concen: 11.536 ug/l  
 RT: 12.09 min Scan# 1722  
 Delta R.T. -0.06 min  
 Lab File: VY000137.D  
 Acq: 23 Sep 2019 17:44

Tgt Ion	Resp	Lower	Upper
43	100		
70	106.2	35.7	53.5#
55	131.5	17.2	25.8#
61	0.0	19.8	29.8#

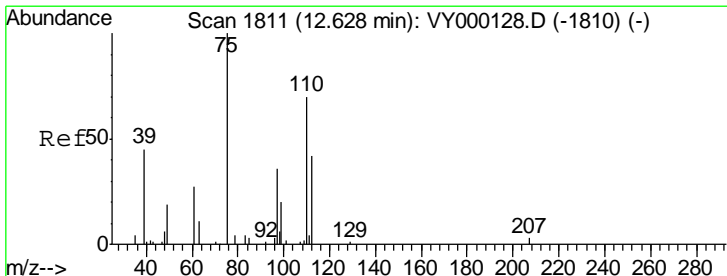
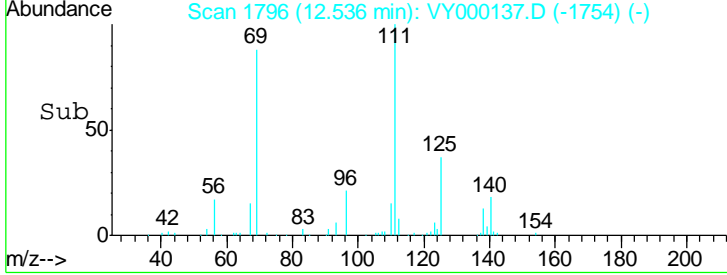
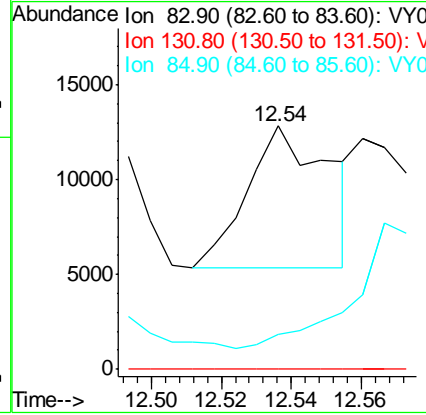
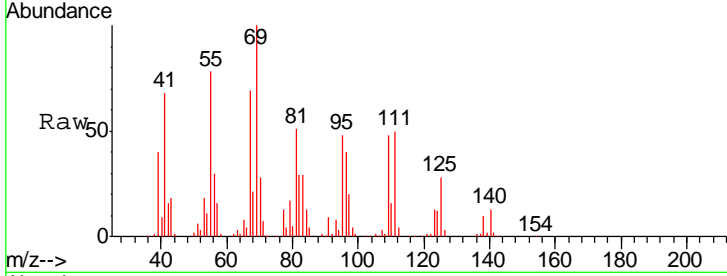




#75  
 1,1,2,2-Tetrachloroethane  
 Concen: 8.097 ug/l  
 RT: 12.54 min Scan# 1796  
 Delta R.T. -0.04 min  
 Lab File: VY000137.D  
 Acq: 23 Sep 2019 17:44

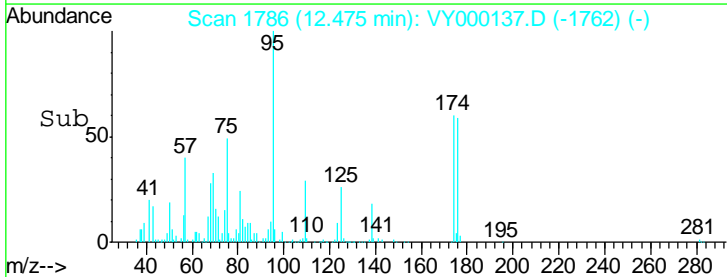
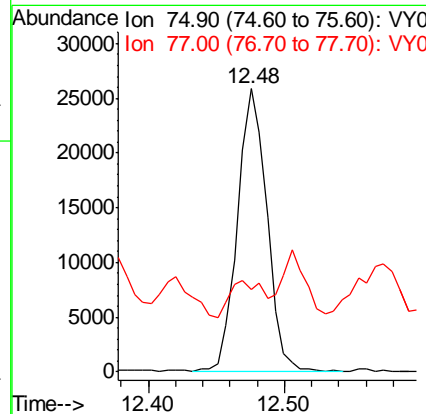
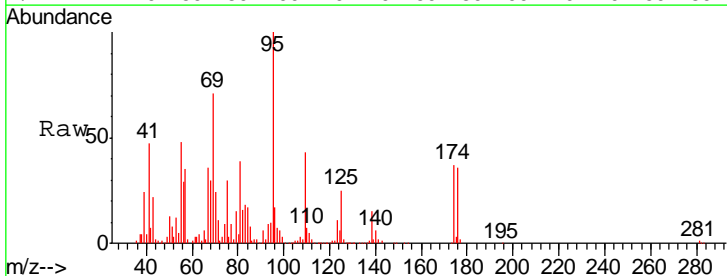
Instrument :  
 MSVOA\_Y  
 ClientSampled :  
 SB-7

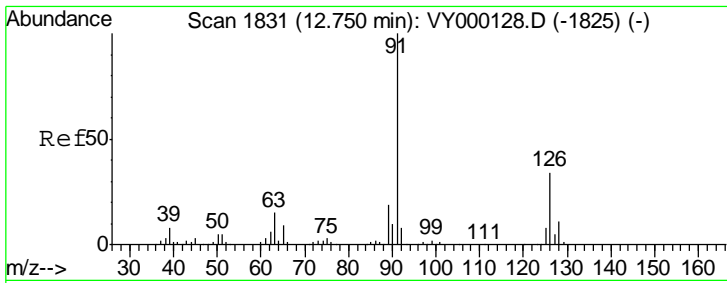
Tgt Ion	Resp	Lower	Upper
83	12088		
131	0.0	4.9	14.6#
85	0.0	32.0	96.0#



#76  
 1,2,3-Trichloropropane  
 Concen: 39.795 ug/l  
 RT: 12.48 min Scan# 1786  
 Delta R.T. -0.15 min  
 Lab File: VY000137.D  
 Acq: 23 Sep 2019 17:44

Tgt Ion	Resp	Lower	Upper
75	39162		
77	14.1	0.0	0.0#

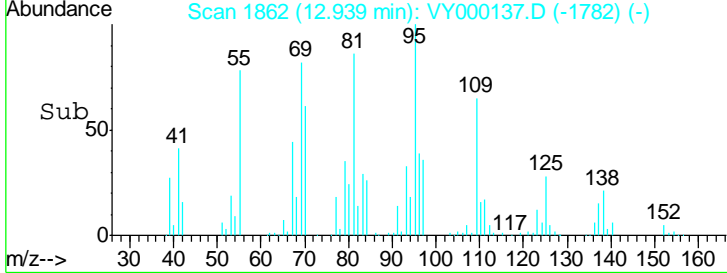
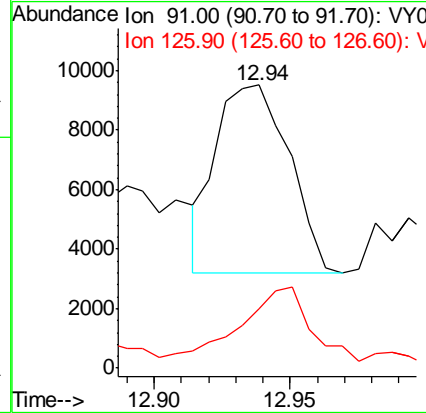
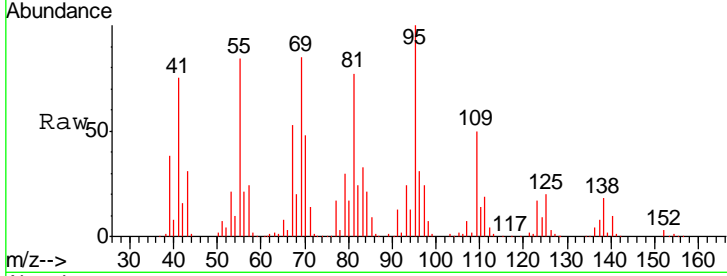




#79  
 2-Chlorotoluene  
 Concen: 2.325 ug/l  
 RT: 12.94 min Scan# 1862  
 Delta R.T. 0.19 min  
 Lab File: VY000137.D  
 Acq: 23 Sep 2019 17:44

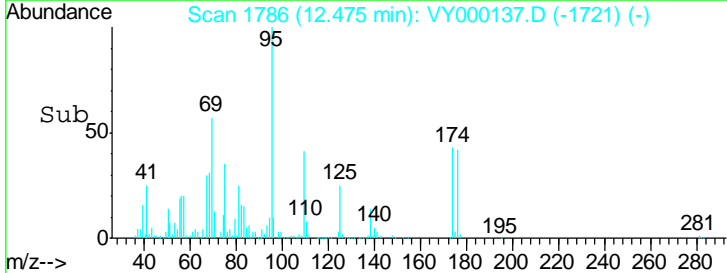
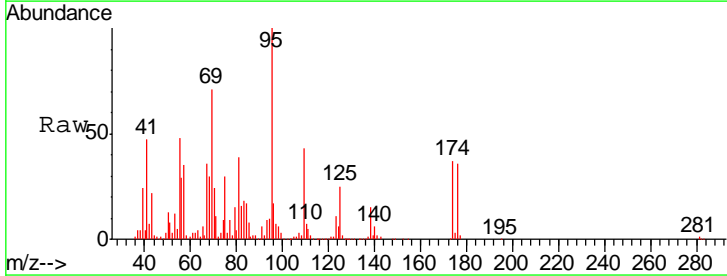
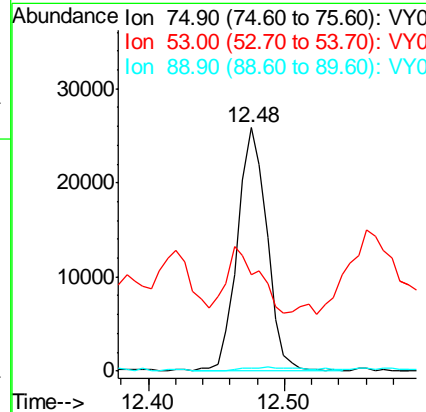
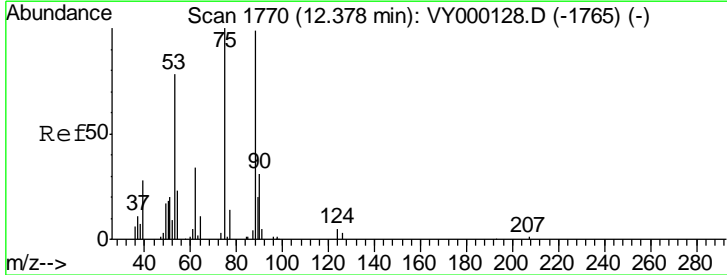
Instrument : MSVOA\_Y  
 ClientSampled : SB-7

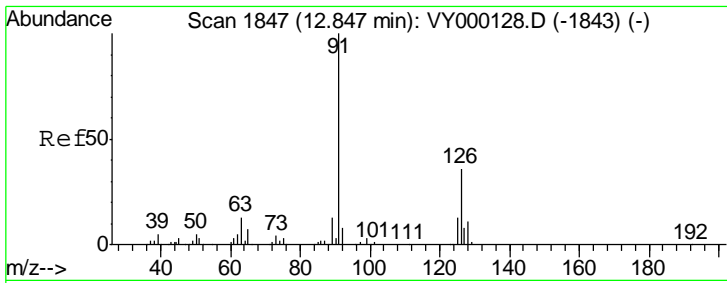
Tgt Ion: 91 Resp: 11801  
 Ion Ratio Lower Upper  
 91 100  
 126 37.2 17.5 52.5



#81  
 trans-1,4-Dichloro-2-butene  
 Concen: 65.412 ug/l  
 RT: 12.48 min Scan# 1786  
 Delta R.T. 0.10 min  
 Lab File: VY000137.D  
 Acq: 23 Sep 2019 17:44

Tgt Ion: 75 Resp: 39162  
 Ion Ratio Lower Upper  
 75 100  
 53 28.7 62.5 93.7#  
 89 0.9 31.4 47.2#

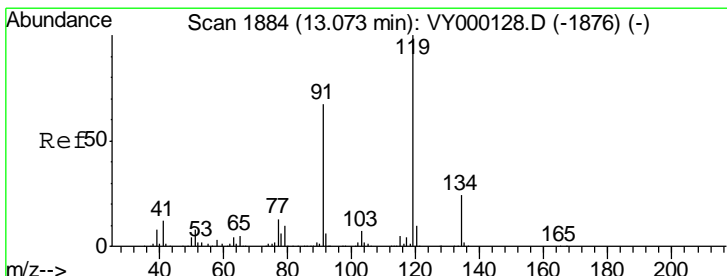
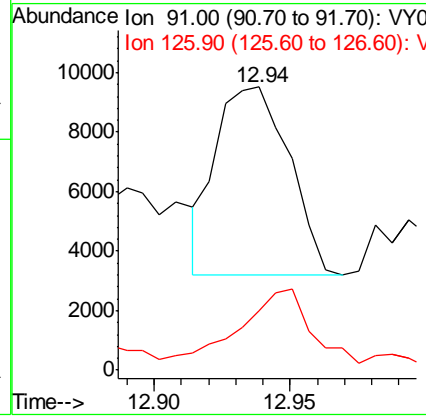
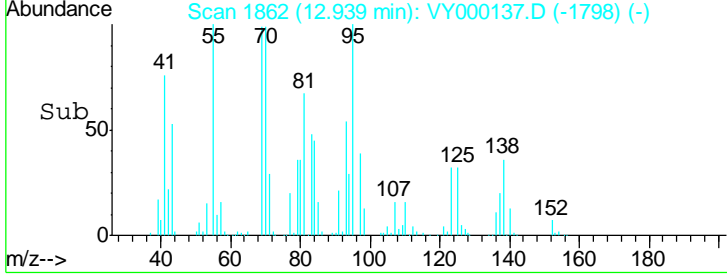
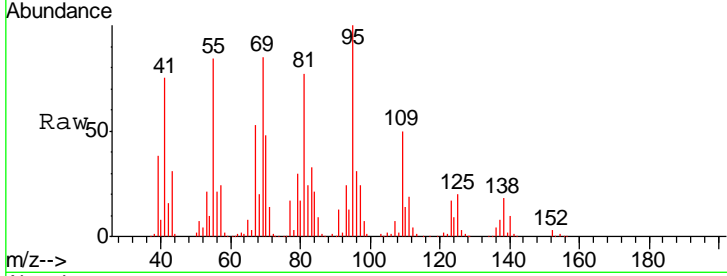




#82  
 4-Chlorotoluene  
 Concen: 2.254 ug/l  
 RT: 12.94 min Scan# 1862  
 Delta R.T. 0.09 min  
 Lab File: VY000137.D  
 Acq: 23 Sep 2019 17:44

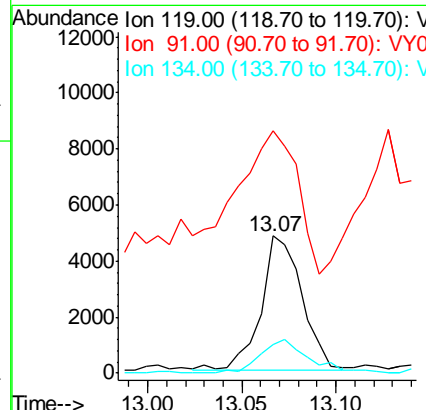
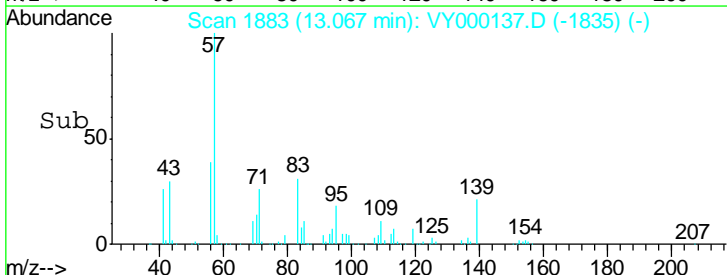
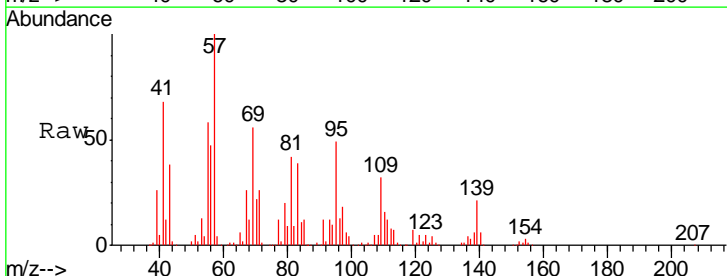
Instrument :  
 MSVOA\_Y  
 ClientSampled :  
 SB-7

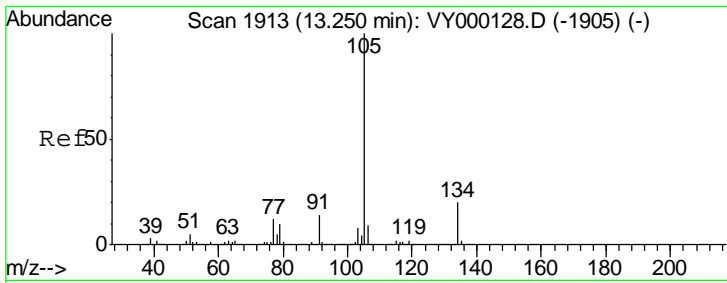
Tgt Ion: 91 Resp: 11801  
 Ion Ratio Lower Upper  
 91 100  
 126 37.2 17.3 51.9



#83  
 tert-Butylbenzene  
 Concen: 1.391 ug/l  
 RT: 13.07 min Scan# 1883  
 Delta R.T. -0.01 min  
 Lab File: VY000137.D  
 Acq: 23 Sep 2019 17:44

Tgt Ion: 119 Resp: 7130  
 Ion Ratio Lower Upper  
 119 100  
 91 157.1 33.6 100.8#  
 134 30.0 12.6 37.6

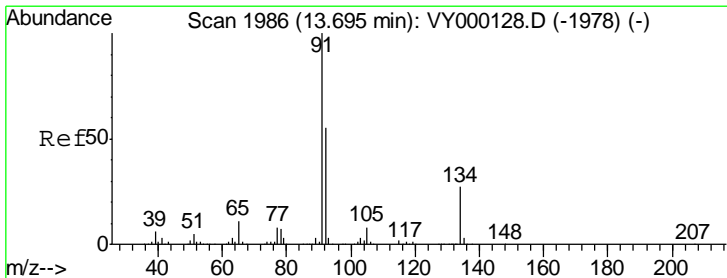
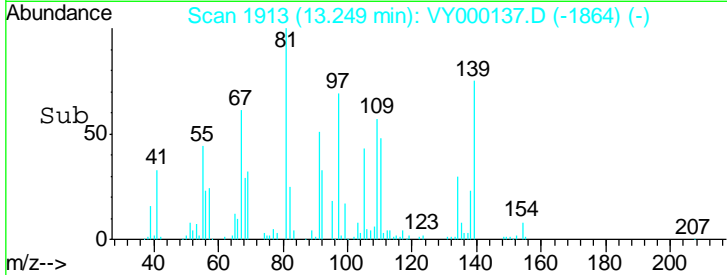
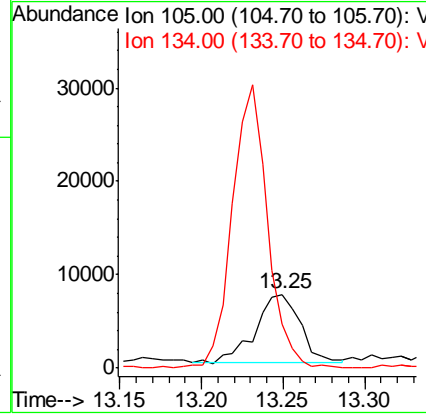
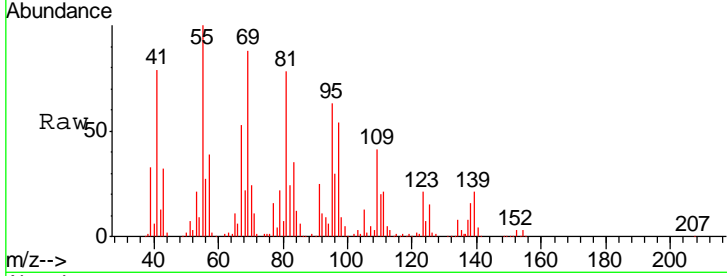




#85  
 sec-Butylbenzene  
 Concen: 1.843 ug/l  
 RT: 13.25 min Scan# 1913  
 Delta R.T. -0.00 min  
 Lab File: VY000137.D  
 Acq: 23 Sep 2019 17:44

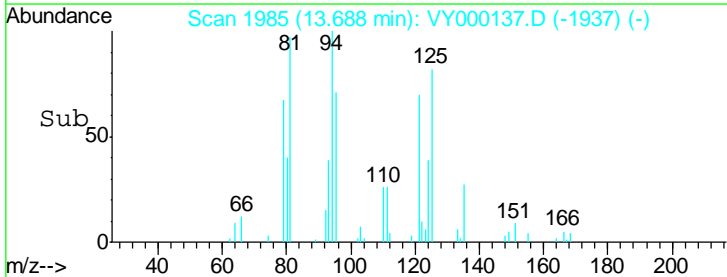
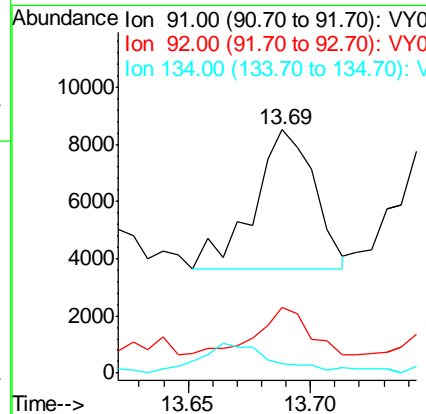
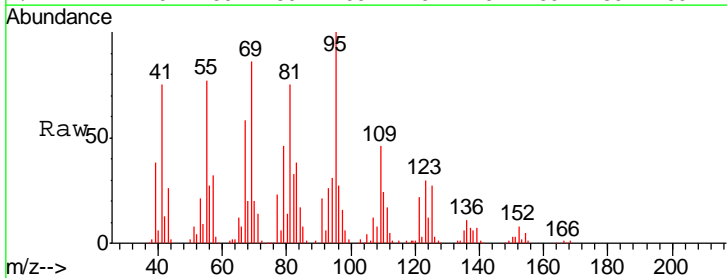
Instrument :  
 MSVOA\_Y  
 ClientSampled :  
 SB-7

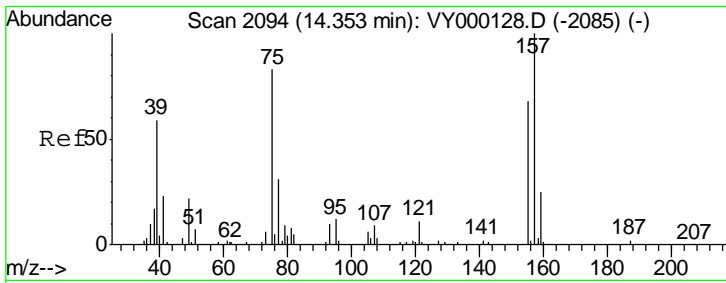
Tgt Ion: 105 Resp: 14117  
 Ion Ratio Lower Upper  
 105 100  
 134 324.1 10.2 30.4#



#89  
 n-Butylbenzene  
 Concen: 1.247 ug/l  
 RT: 13.69 min Scan# 1985  
 Delta R.T. -0.01 min  
 Lab File: VY000137.D  
 Acq: 23 Sep 2019 17:44

Tgt Ion: 91 Resp: 8357  
 Ion Ratio Lower Upper  
 91 100  
 92 28.4 27.2 81.5  
 134 0.0 12.9 38.7#

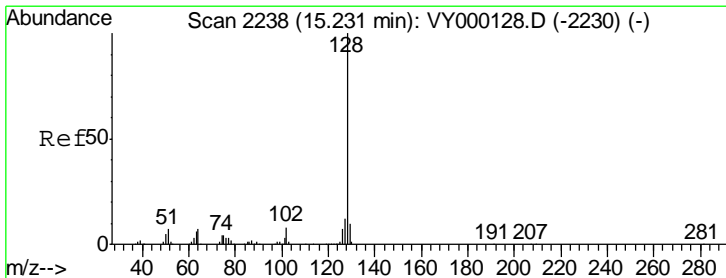
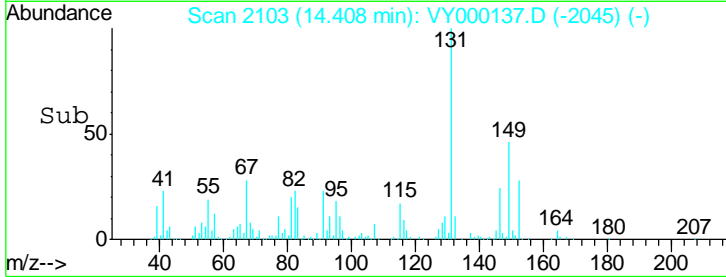
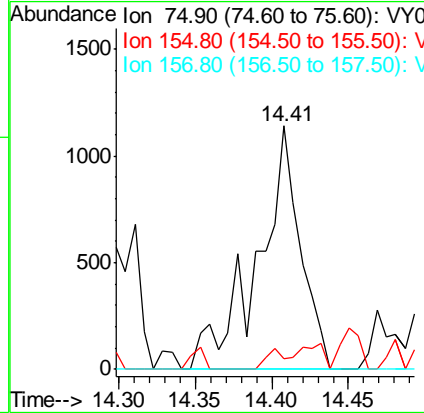
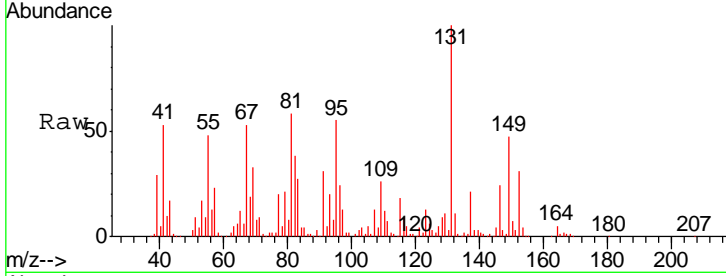




#92  
 1,2-Dibromo-3-Chloropropane  
 Concen: 8.087 ug/l  
 RT: 14.41 min Scan# 2103  
 Delta R.T. 0.05 min  
 Lab File: VY000137.D  
 Acq: 23 Sep 2019 17:44

Instrument :  
 MSVOA\_Y  
 ClientSampled :  
 SB-7

Tgt Ion	Resp	Lower	Upper
75	100		
155	3.4	44.7	134.1#
157	0.0	55.9	167.7#



#95  
 Naphthalene  
 Concen: 6.969 ug/l  
 RT: 15.20 min Scan# 2233  
 Delta R.T. -0.03 min  
 Lab File: VY000137.D  
 Acq: 23 Sep 2019 17:44

Tgt Ion	Resp	Lower	Upper
128	100		
127	36.3	9.7	14.5#
129	84.8	8.3	12.5#

