

Data Path : Z:\voasrv\HPCHEM1\MSVOA_Y\Data\VY092623\
 Data File : VY015710.D
 Acq On : 26 Sep 2023 15:39
 Operator : SY/MD
 Sample : 04604-01
 Misc : 5.02g/5.0mL/MSVOA_Y/SOIL
 ALS Vial : 9 Sample Multiplier: 1

Instrument :
 MSVOA_Y
 ClientSampleId :

Quant Time: Sep 27 01:33:10 2023
 Quant Method : Z:\voasrv\HPCHEM1\MSVOA_Y\methods\82Y091923S.M
 Quant Title : SW846 8260
 QLast Update : Wed Sep 20 01:39:40 2023
 Response via : Initial Calibration

Compound	R.T.	QIon	Response	Conc	Units	Dev(Min)

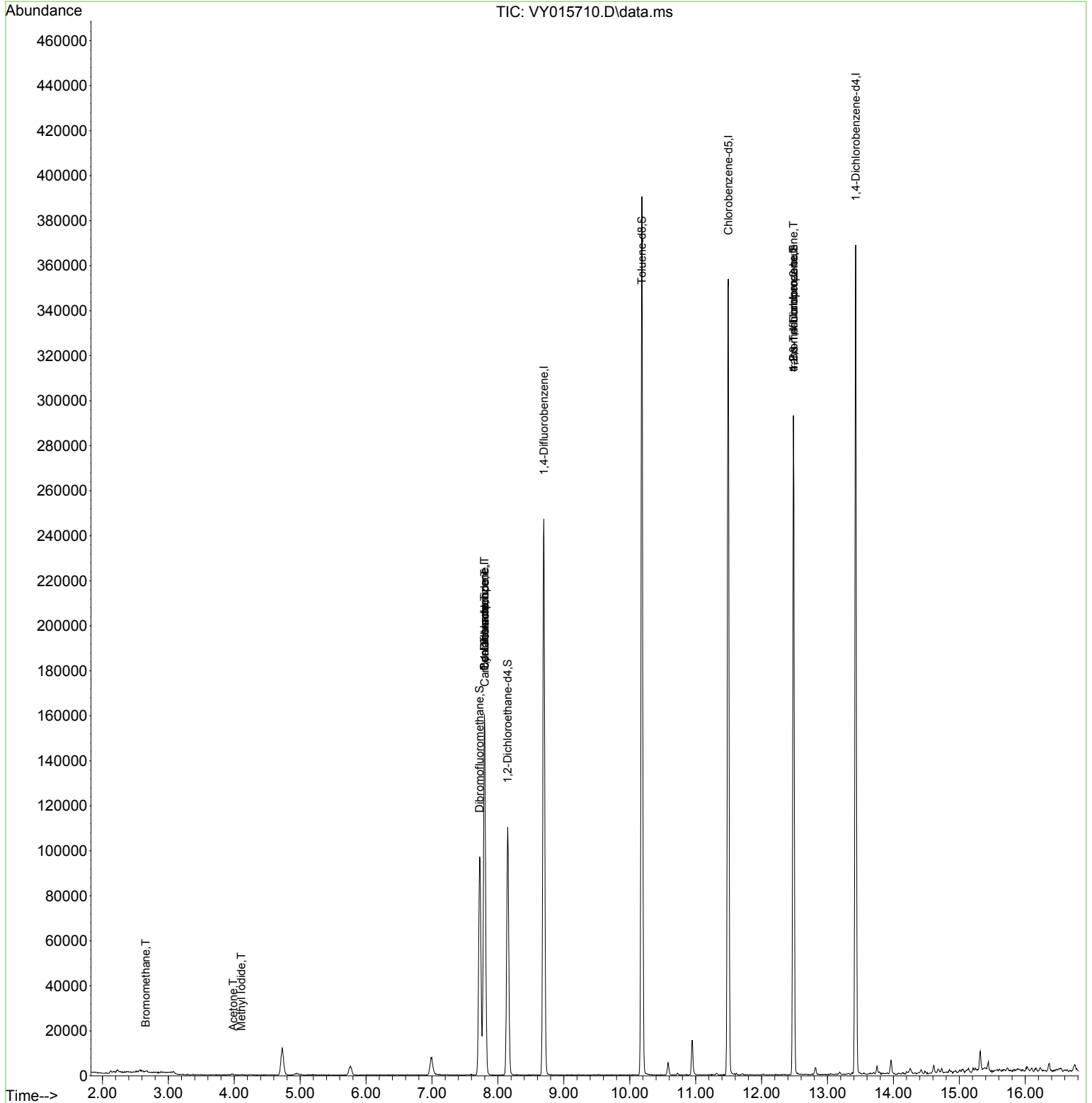
Internal Standards						
1) Pentafluorobenzene	7.795	168	123601	50.000	ug/l	0.01
34) 1,4-Difluorobenzene	8.697	114	214042	50.000	ug/l	0.01
63) Chlorobenzene-d5	11.496	117	198432	50.000	ug/l	0.00
72) 1,4-Dichlorobenzene-d4	13.428	152	93125	50.000	ug/l	0.00
System Monitoring Compounds						
33) 1,2-Dichloroethane-d4	8.149	65	83773	61.600	ug/l	0.01
Spiked Amount	50.000	Range	50 - 163	Recovery	=	123.200%
35) Dibromofluoromethane	7.722	113	69876	54.543	ug/l	0.00
Spiked Amount	50.000	Range	54 - 147	Recovery	=	109.080%
50) Toluene-d8	10.185	98	253929	58.458	ug/l	0.00
Spiked Amount	50.000	Range	58 - 134	Recovery	=	116.920%
62) 4-Bromofluorobenzene	12.483	95	84489	49.564	ug/l	0.00
Spiked Amount	50.000	Range	30 - 143	Recovery	=	99.120%
Target Compounds						
					Qvalue	
5) Bromomethane	2.656	94	52	2.599	ug/l #	63
10) Methyl Iodide	4.107	142	254	2.894	ug/l #	50
11) Tert butyl alcohol	4.966	59	691	Below Cal	#	89
16) Acetone	3.985	43	807	1.109	ug/l #	46
31) Cyclohexane	7.795	56	2569	1.364	ug/l #	9
36) 1,1-Dichloropropene	7.795	75	9699	5.120	ug/l #	50
38) Carbon Tetrachloride	7.801	117	12230	5.948	ug/l #	17
76) 1,2,3-Trichloropropane	12.483	75	45941	30.923	ug/l #	100
81) trans-1,4-Dichloro-2-b...	12.483	75	45941	69.636	ug/l #	11

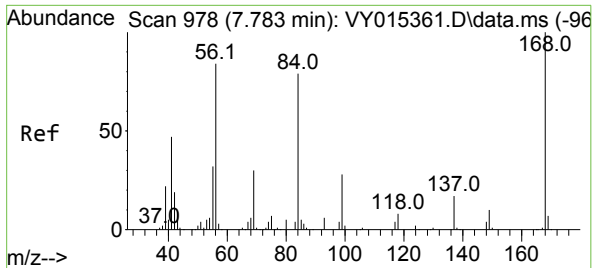
(#) = qualifier out of range (m) = manual integration (+) = signals summed

Data Path : Z:\voasrv\HPCHEM1\MSVOA_Y\Data\VY092623\
 Data File : VY015710.D
 Acq On : 26 Sep 2023 15:39
 Operator : SY/MD
 Sample : 04604-01
 Misc : 5.02g/5.0mL/MSVOA_Y/SOIL
 ALS Vial : 9 Sample Multiplier: 1

Instrument :
 MSVOA_Y
 ClientSampleId :

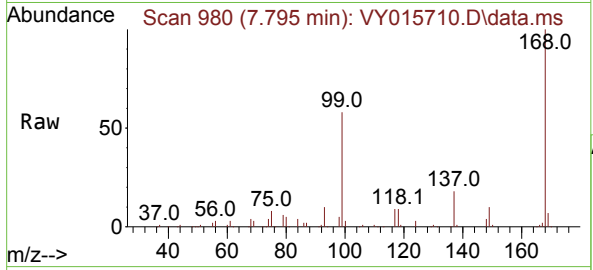
Quant Time: Sep 27 01:33:10 2023
 Quant Method : Z:\voasrv\HPCHEM1\MSVOA_Y\methods\82Y091923S.M
 Quant Title : SW846 8260
 QLast Update : Wed Sep 20 01:39:40 2023
 Response via : Initial Calibration



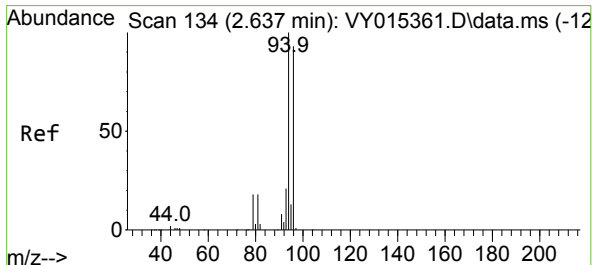
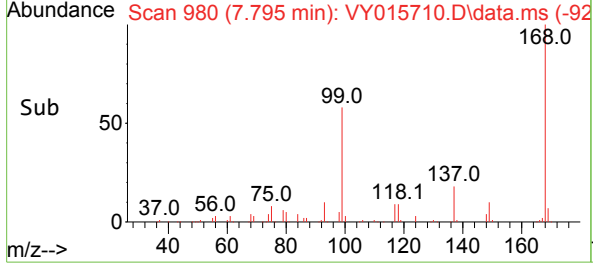
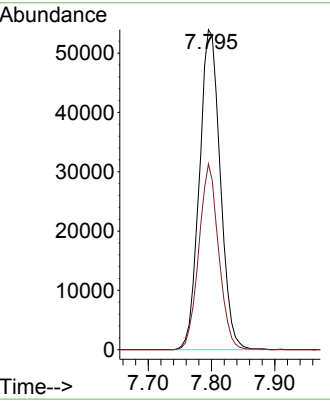


#1
 Pentafluorobenzene
 Concen: 50.000 ug/l
 RT: 7.795 min Scan# 91
 Delta R.T. 0.012 min
 Lab File: VY015710.D
 Acq: 26 Sep 2023 15:39

Instrument : MSVOA_Y
 ClientSampleId :

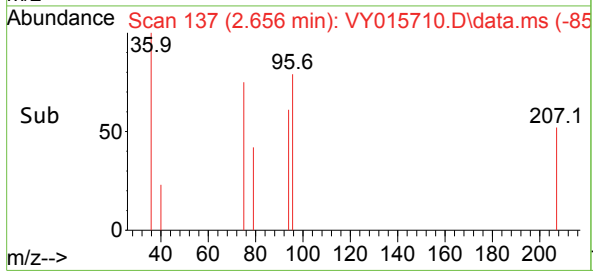
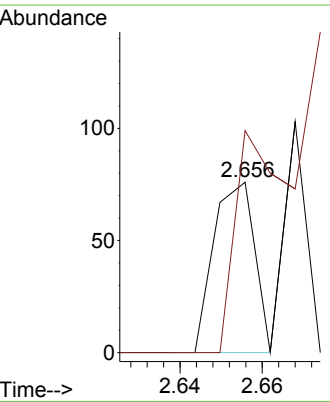
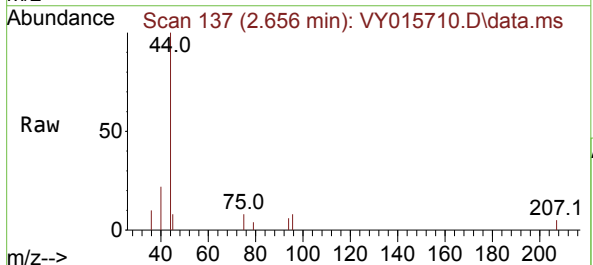


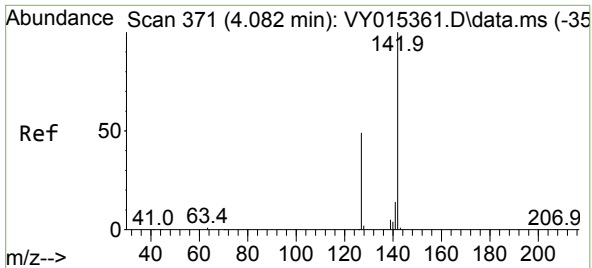
Tgt Ion:168 Resp: 123601
 Ion Ratio Lower Upper
 168 100
 99 58.1 43.4 65.0



#5
 Bromomethane
 Concen: 2.599 ug/l
 RT: 2.656 min Scan# 137
 Delta R.T. 0.019 min
 Lab File: VY015710.D
 Acq: 26 Sep 2023 15:39

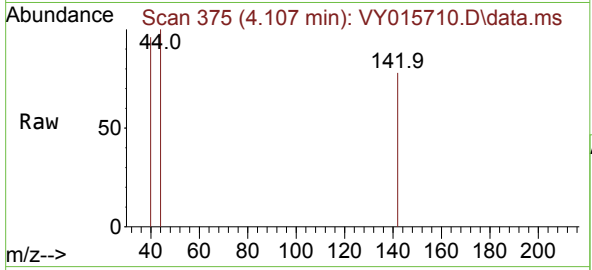
Tgt Ion: 94 Resp: 52
 Ion Ratio Lower Upper
 94 100
 96 130.3 75.8 113.6#



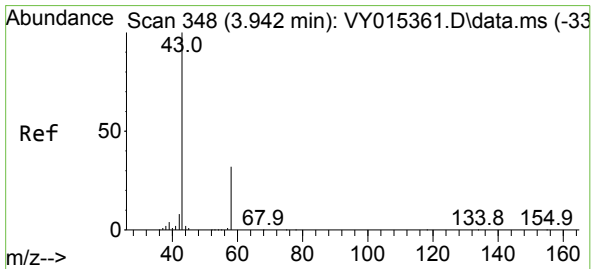
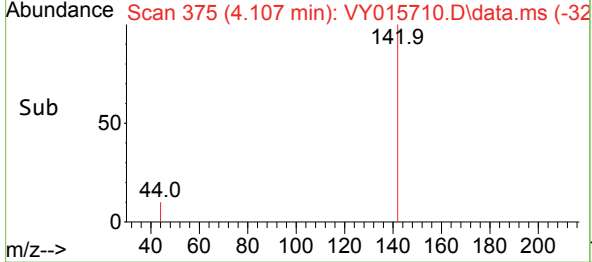
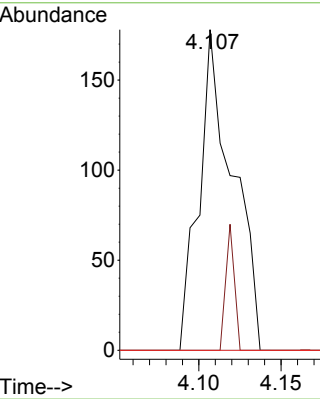


#10
Methyl Iodide
Concen: 2.894 ug/l
RT: 4.107 min Scan# 31
Delta R.T. 0.025 min
Lab File: VY015710.D
Acq: 26 Sep 2023 15:39

Instrument : MSVOA_Y
ClientSampleId :

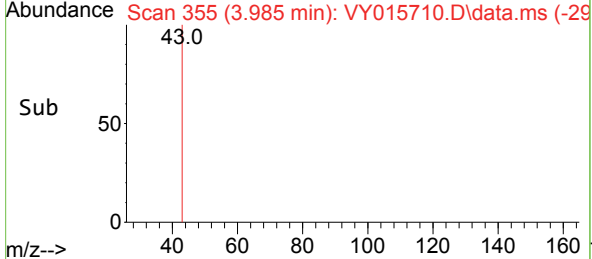
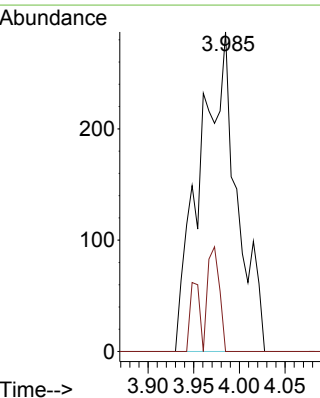
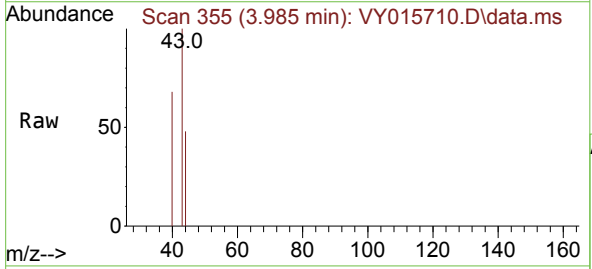


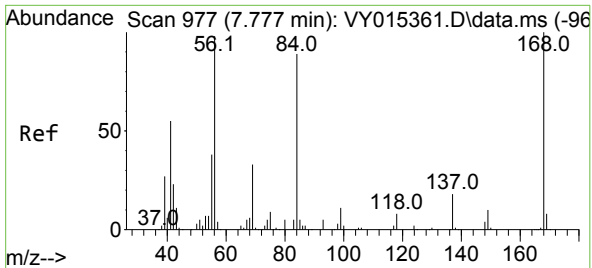
Tgt Ion:142 Resp: 254
Ion Ratio Lower Upper
142 100
127 10.2 37.6 56.4#
141 0.0 11.8 17.8#



#16
Acetone
Concen: 1.109 ug/l
RT: 3.985 min Scan# 355
Delta R.T. 0.043 min
Lab File: VY015710.D
Acq: 26 Sep 2023 15:39

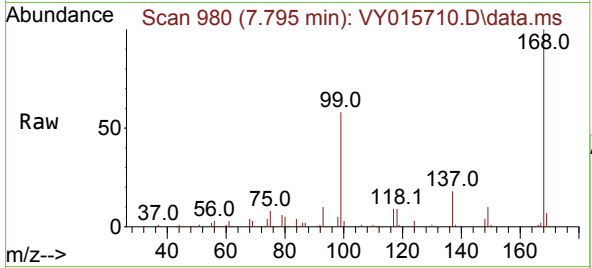
Tgt Ion: 43 Resp: 807
Ion Ratio Lower Upper
43 100
58 0.0 22.7 34.1#



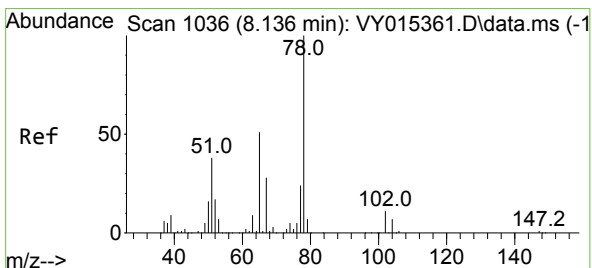
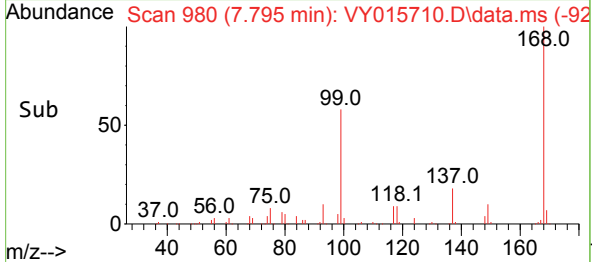
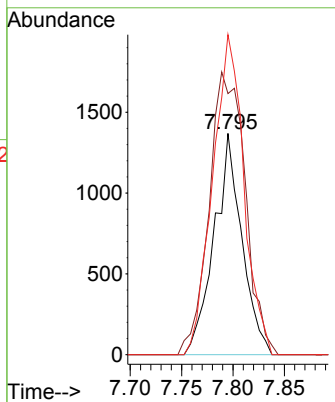


#31
 Cyclohexane
 Concen: 1.364 ug/l
 RT: 7.795 min Scan# 91
 Delta R.T. 0.012 min
 Lab File: VY015710.D
 Acq: 26 Sep 2023 15:39

Instrument :
 MSVOA_Y
 ClientSampleId :

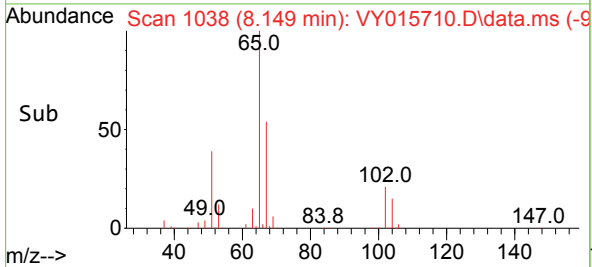
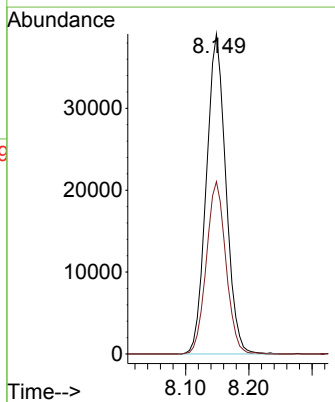
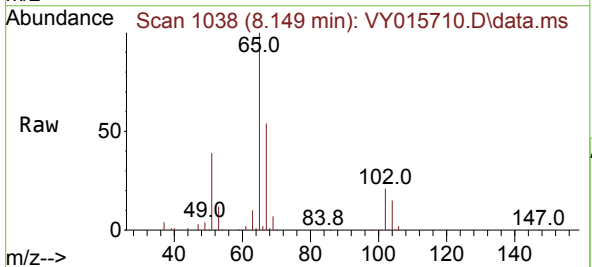


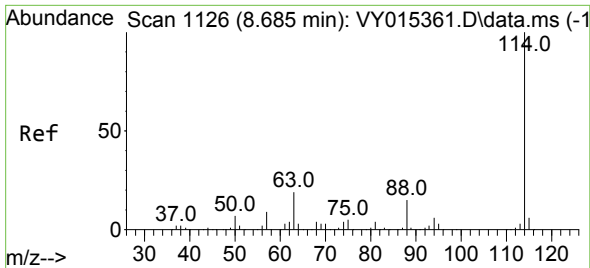
Tgt Ion: 56 Resp: 2569
 Ion Ratio Lower Upper
 56 100
 69 118.0 27.8 41.6#
 84 144.6 66.4 99.6#



#33
 1,2-Dichloroethane-d4
 Concen: 61.600 ug/l
 RT: 8.149 min Scan# 1038
 Delta R.T. 0.013 min
 Lab File: VY015710.D
 Acq: 26 Sep 2023 15:39

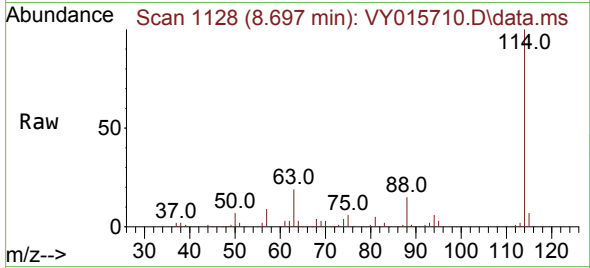
Tgt Ion: 65 Resp: 83773
 Ion Ratio Lower Upper
 65 100
 67 54.0 0.0 101.8





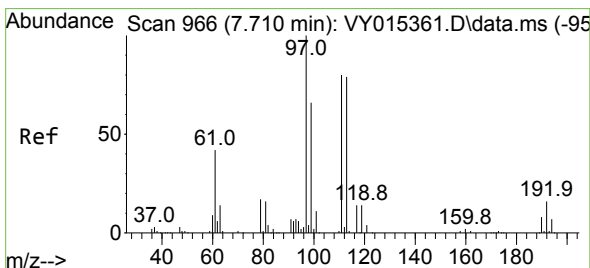
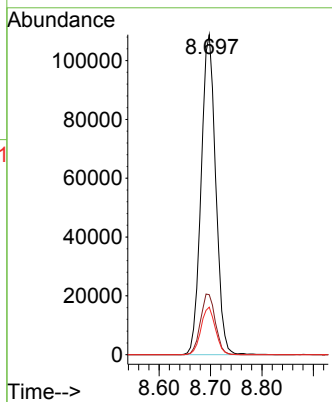
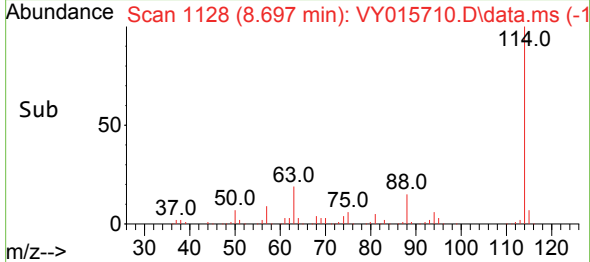
#34
 1,4-Difluorobenzene
 Concen: 50.000 ug/l
 RT: 8.697 min Scan# 1128
 Delta R.T. 0.012 min
 Lab File: VY015710.D
 Acq: 26 Sep 2023 15:39

Instrument :
 MSVOA_Y
 ClientSampleId :

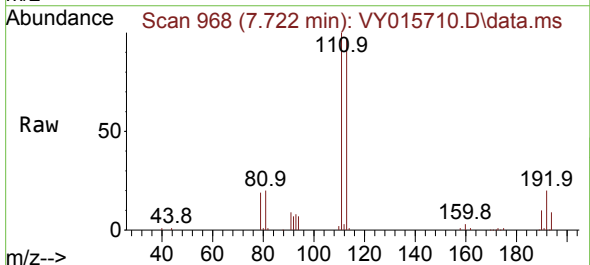


Tgt Ion:114 Resp: 214042

Ion	Ratio	Lower	Upper
114	100		
63	18.7	0.0	42.4
88	14.9	0.0	30.6

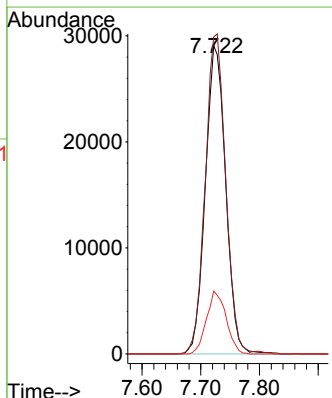
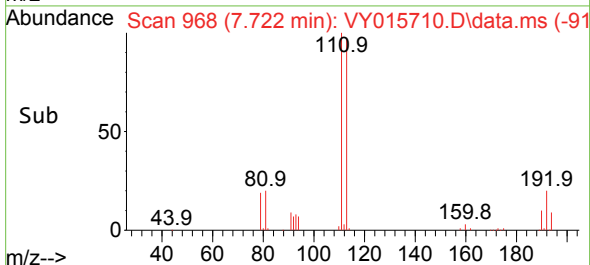


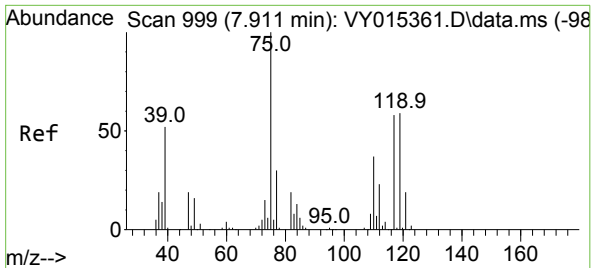
#35
 Dibromofluoromethane
 Concen: 54.543 ug/l
 RT: 7.722 min Scan# 968
 Delta R.T. 0.006 min
 Lab File: VY015710.D
 Acq: 26 Sep 2023 15:39



Tgt Ion:113 Resp: 69876

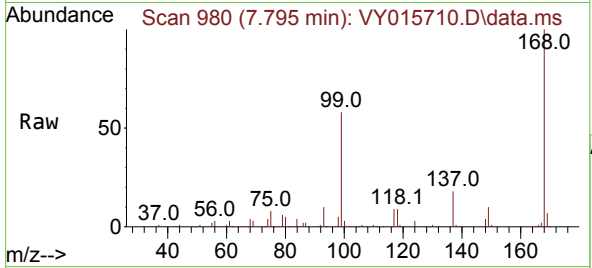
Ion	Ratio	Lower	Upper
113	100		
111	104.9	81.3	121.9
192	19.7	16.9	25.3



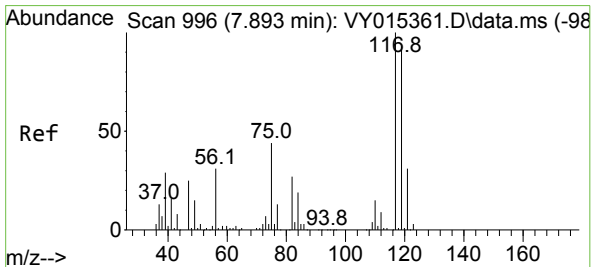
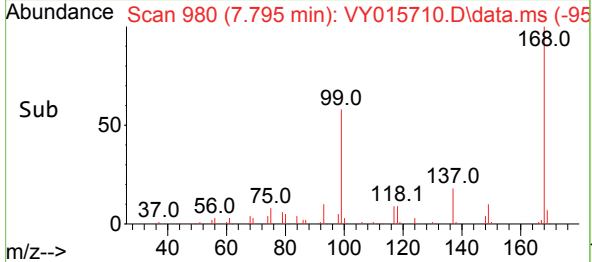
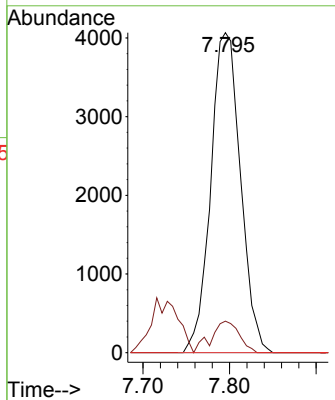


#36
 1,1-Dichloropropene
 Concen: 5.120 ug/l
 RT: 7.795 min Scan# 91
 Delta R.T. -0.116 min
 Lab File: VY015710.D
 Acq: 26 Sep 2023 15:39

Instrument :
 MSVOA_Y
 ClientSampleId :

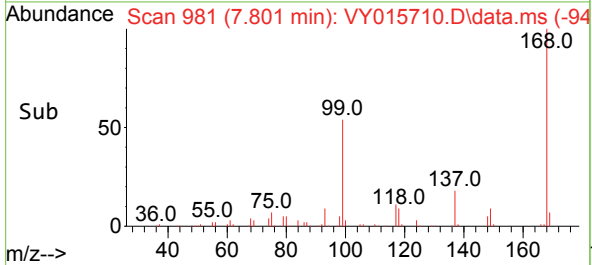
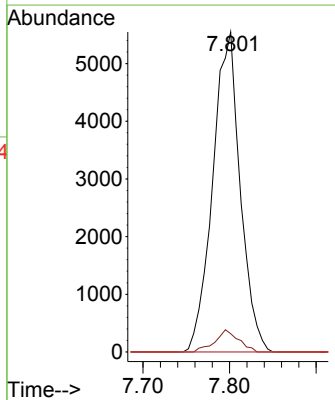
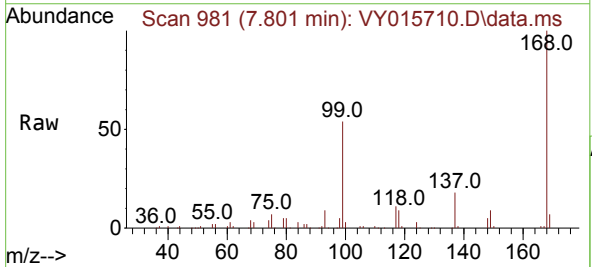


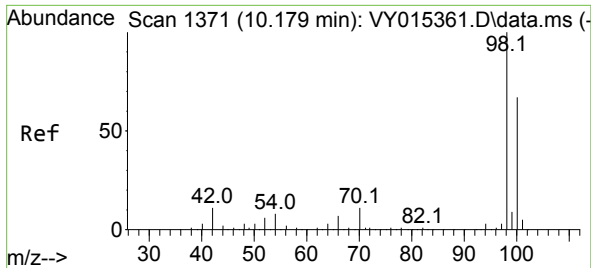
Tgt Ion: 75 Resp: 9699
 Ion Ratio Lower Upper
 75 100
 110 9.3 17.8 53.5#
 77 0.0 24.4 36.6#



#38
 Carbon Tetrachloride
 Concen: 5.948 ug/l
 RT: 7.801 min Scan# 981
 Delta R.T. -0.092 min
 Lab File: VY015710.D
 Acq: 26 Sep 2023 15:39

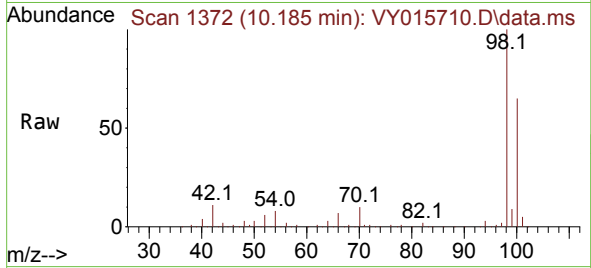
Tgt Ion: 117 Resp: 12230
 Ion Ratio Lower Upper
 117 100
 119 5.7 76.4 114.6#
 121 0.0 25.8 38.6#



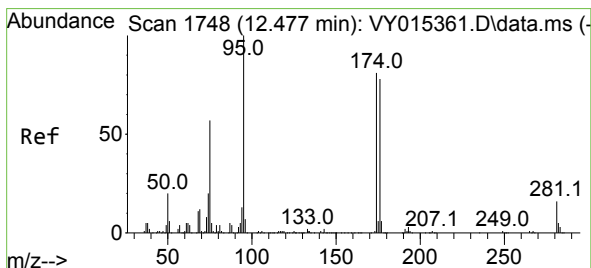
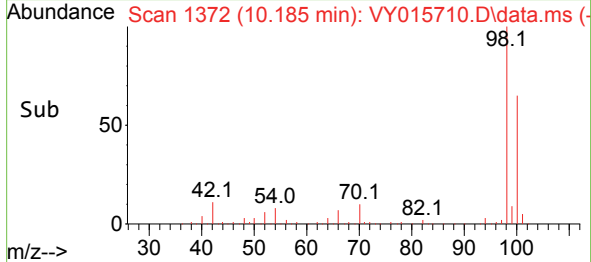
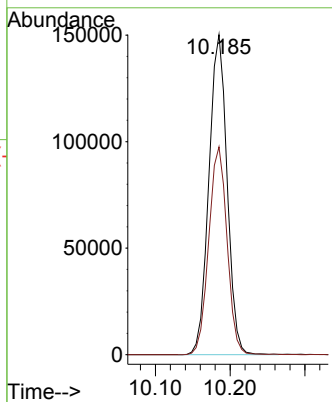


#50
 Toluene-d8
 Concen: 58.458 ug/l
 RT: 10.185 min Scan# 11
 Delta R.T. 0.006 min
 Lab File: VY015710.D
 Acq: 26 Sep 2023 15:39

Instrument :
 MSVOA_Y
 ClientSampleId :

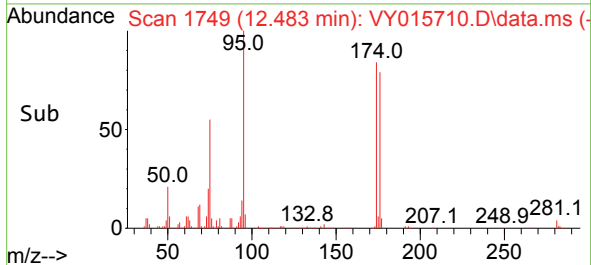
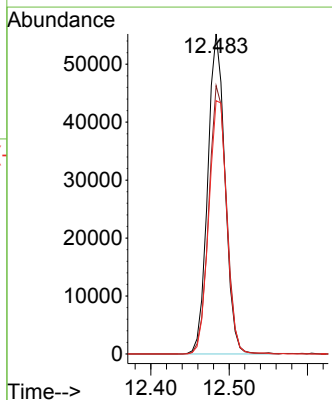
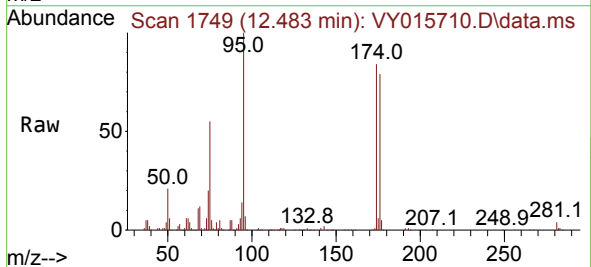


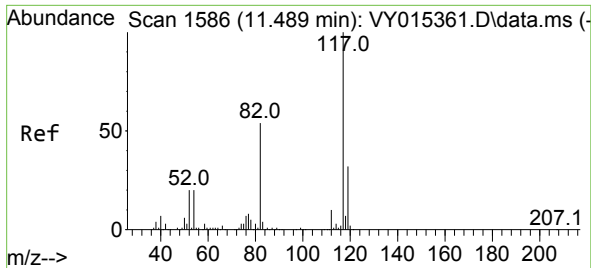
Tgt Ion: 98 Resp: 253929
 Ion Ratio Lower Upper
 98 100
 100 65.4 50.1 75.1



#62
 4-Bromofluorobenzene
 Concen: 49.564 ug/l
 RT: 12.483 min Scan# 1749
 Delta R.T. 0.006 min
 Lab File: VY015710.D
 Acq: 26 Sep 2023 15:39

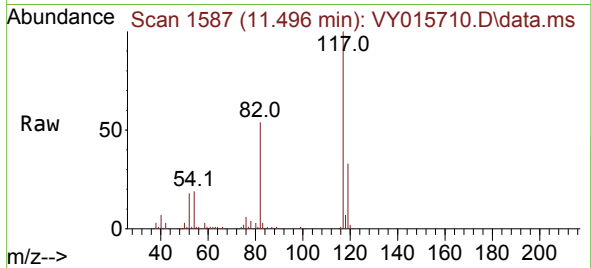
Tgt Ion: 95 Resp: 84489
 Ion Ratio Lower Upper
 95 100
 174 85.9 0.0 178.2
 176 82.6 0.0 173.8



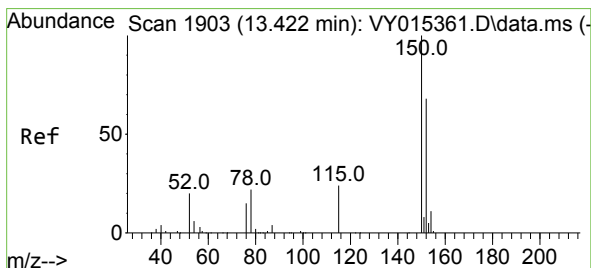
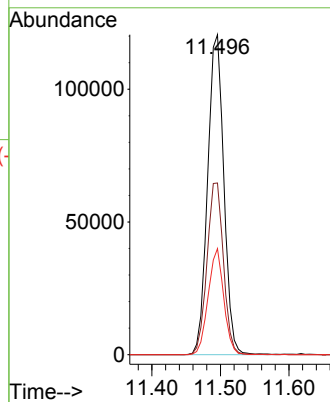
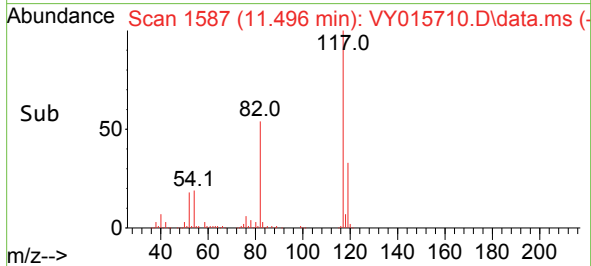


#63
 Chlorobenzene-d5
 Concen: 50.000 ug/l
 RT: 11.496 min Scan# 11
 Delta R.T. 0.007 min
 Lab File: VY015710.D
 Acq: 26 Sep 2023 15:39

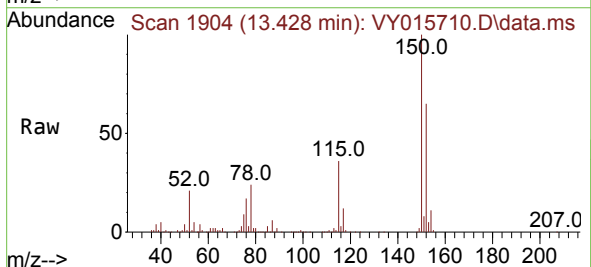
Instrument :
 MSVOA_Y
 ClientSampleId :



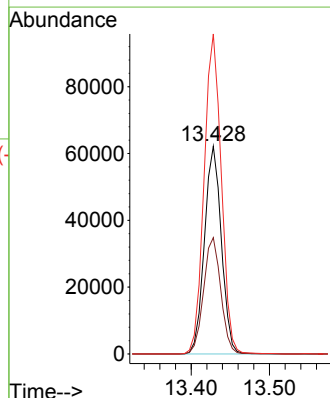
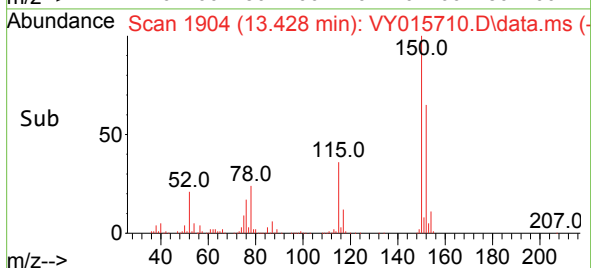
Tgt Ion:117 Resp: 198432
 Ion Ratio Lower Upper
 117 100
 82 53.6 43.4 65.0
 119 33.2 26.3 39.5

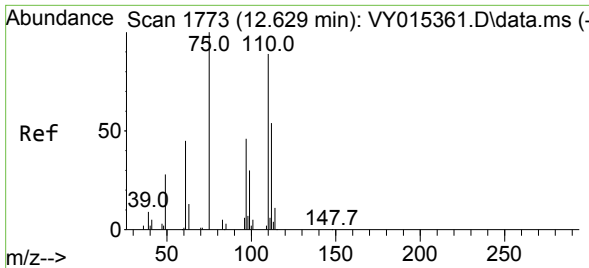


#72
 1,4-Dichlorobenzene-d4
 Concen: 50.000 ug/l
 RT: 13.428 min Scan# 1904
 Delta R.T. 0.006 min
 Lab File: VY015710.D
 Acq: 26 Sep 2023 15:39



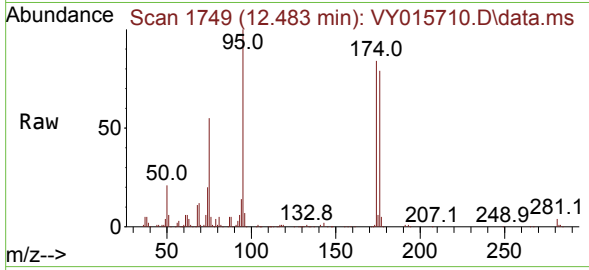
Tgt Ion:152 Resp: 93125
 Ion Ratio Lower Upper
 152 100
 115 56.9 28.8 86.5
 150 156.6 0.0 348.8



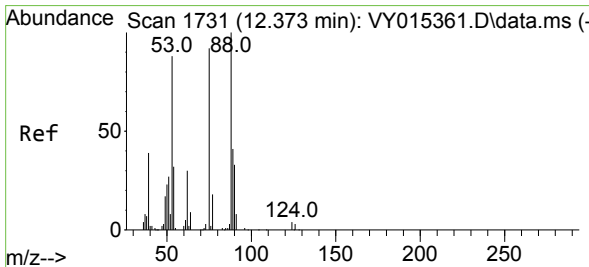
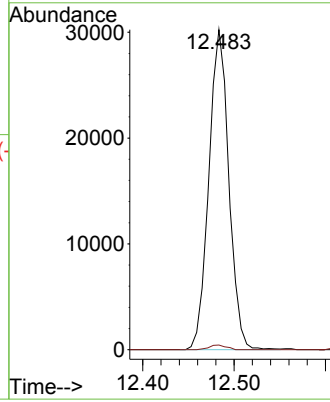
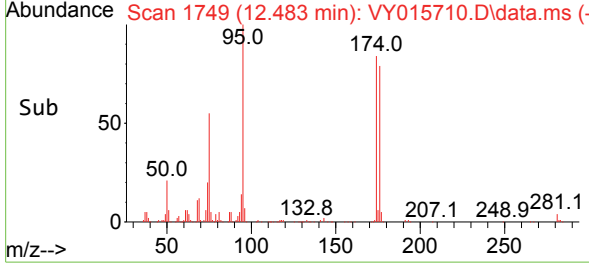


#76
 1,2,3-Trichloropropane
 Concen: 30.923 ug/l
 RT: 12.483 min Scan# 1749
 Delta R.T. -0.146 min
 Lab File: VY015710.D
 Acq: 26 Sep 2023 15:39

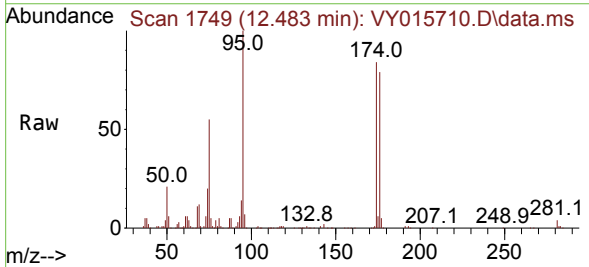
Instrument : MSVOA_Y
 ClientSampleId :



Tgt Ion: 75 Resp: 45941
 Ion Ratio Lower Upper
 75 100
 77 1.2 0.0 0.0#



#81
 trans-1,4-Dichloro-2-butene
 Concen: 69.636 ug/l
 RT: 12.483 min Scan# 1749
 Delta R.T. 0.103 min
 Lab File: VY015710.D
 Acq: 26 Sep 2023 15:39



Tgt Ion: 75 Resp: 45941
 Ion Ratio Lower Upper
 75 100
 53 0.0 77.8 116.8#
 89 0.1 37.4 56.0#

