

Data Path : Z:\voasrv\HPCHEM1\MSVOA_Y\Data\VY100223\
 Data File : VY015791.D
 Acq On : 02 Oct 2023 20:59
 Operator : SY/MD
 Sample : 04685-02
 Misc : 5.42g/5.0mL/MSVOA_Y/SOIL
 ALS Vial : 21 Sample Multiplier: 1

Instrument :
 MSVOA_Y
 ClientSampleId :
 PP-20230928-B4A-0-2

Quant Time: Oct 03 01:29:23 2023
 Quant Method : Z:\voasrv\HPCHEM1\MSVOA_Y\methods\82Y091923S.M
 Quant Title : SW846 8260
 QLast Update : Wed Sep 20 01:39:40 2023
 Response via : Initial Calibration

Compound	R.T.	QIon	Response	Conc	Units	Dev(Min)

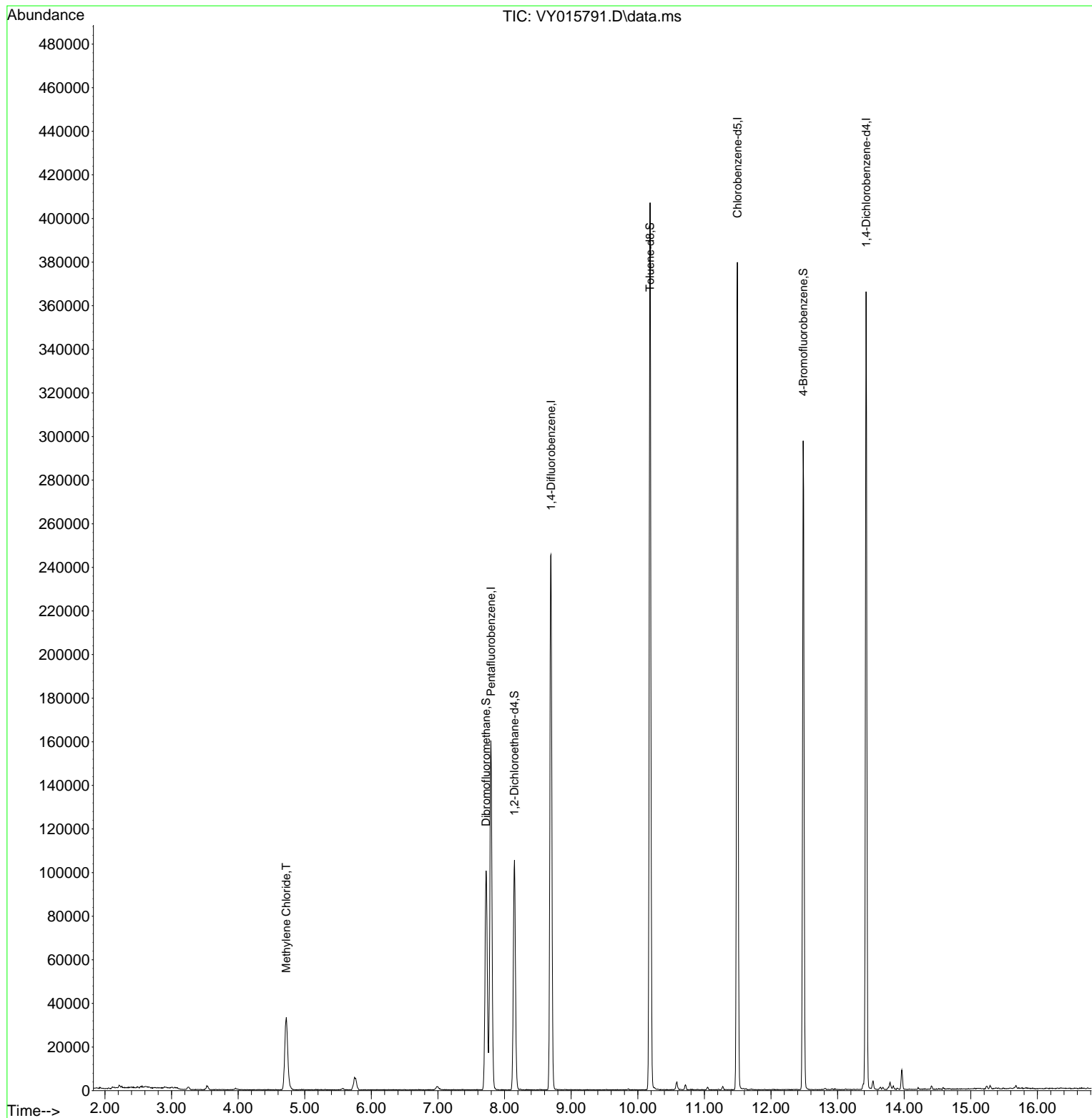
Internal Standards						
1) Pentafluorobenzene	7.795	168	125613	50.000	ug/l	0.01
34) 1,4-Difluorobenzene	8.697	114	217375	50.000	ug/l	0.01
63) Chlorobenzene-d5	11.496	117	203597	50.000	ug/l	0.00
72) 1,4-Dichlorobenzene-d4	13.428	152	92040	50.000	ug/l	0.00
System Monitoring Compounds						
33) 1,2-Dichloroethane-d4	8.149	65	82012	59.339	ug/l	0.01
Spiked Amount	50.000	Range	50 - 163	Recovery	=	118.680%
35) Dibromofluoromethane	7.722	113	71868	55.238	ug/l	0.00
Spiked Amount	50.000	Range	54 - 147	Recovery	=	110.480%
50) Toluene-d8	10.185	98	262779	59.568	ug/l	0.00
Spiked Amount	50.000	Range	58 - 134	Recovery	=	119.140%
62) 4-Bromofluorobenzene	12.483	95	85408	49.335	ug/l	0.00
Spiked Amount	50.000	Range	30 - 143	Recovery	=	98.660%
Target Compounds						
20) Methylene Chloride	4.723	84	25813	12.285	ug/l	88

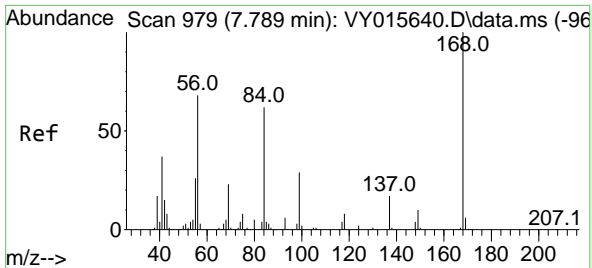
(#) = qualifier out of range (m) = manual integration (+) = signals summed

Data Path : Z:\voasrv\HPCHEM1\MSVOA_Y\Data\VY100223\
 Data File : VY015791.D
 Acq On : 02 Oct 2023 20:59
 Operator : SY/MD
 Sample : 04685-02
 Misc : 5.42g/5.0mL/MSVOA_Y/SOIL
 ALS Vial : 21 Sample Multiplier: 1

Instrument :
 MSVOA_Y
 ClientSampleId :
 PP-20230928-B4A-0-2

Quant Time: Oct 03 01:29:23 2023
 Quant Method : Z:\voasrv\HPCHEM1\MSVOA_Y\methods\82Y091923S.M
 Quant Title : SW846 8260
 QLast Update : Wed Sep 20 01:39:40 2023
 Response via : Initial Calibration

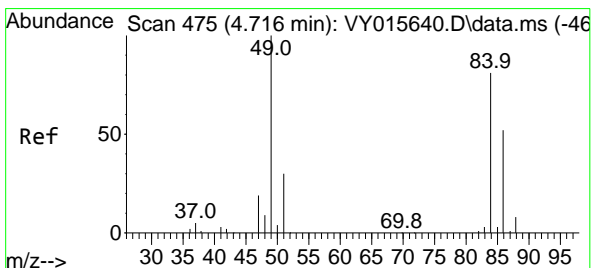
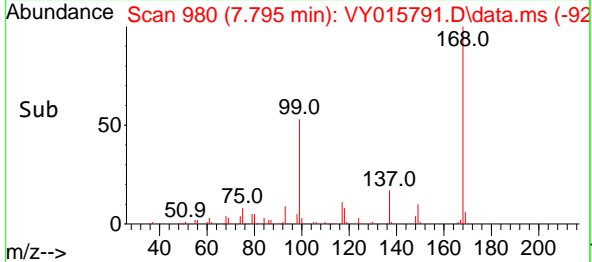
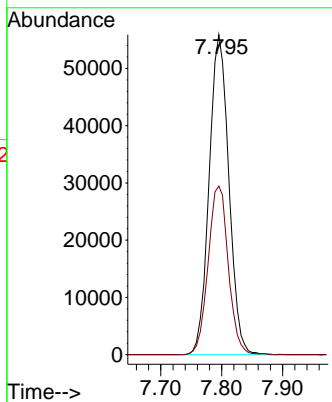
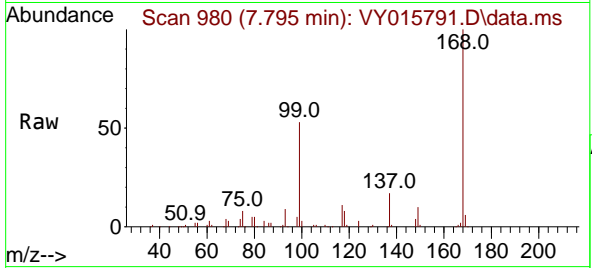




#1
 Pentafluorobenzene
 Concen: 50.000 ug/l
 RT: 7.795 min Scan# 91
 Delta R.T. 0.012 min
 Lab File: VY015791.D
 Acq: 02 Oct 2023 20:59

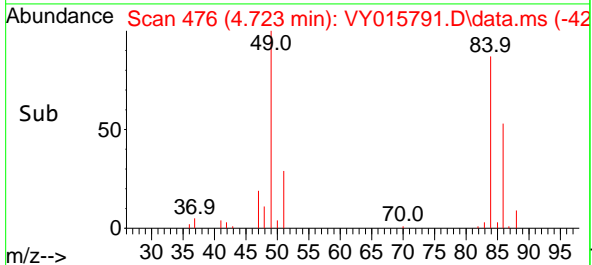
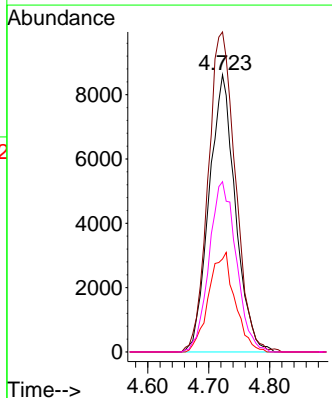
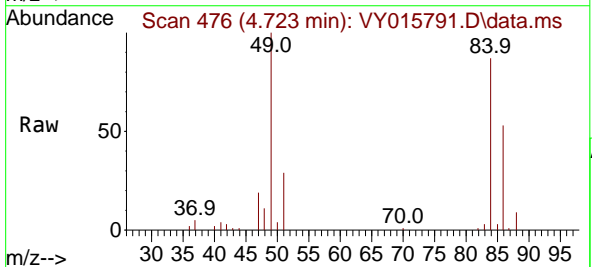
Instrument : MSVOA_Y
 ClientSampleId : PP-20230928-B4A-0-2

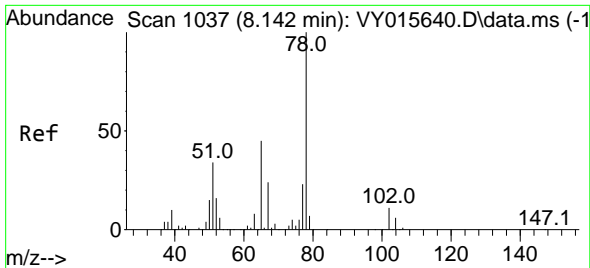
Tgt Ion:168 Resp: 125613
 Ion Ratio Lower Upper
 168 100
 99 52.7 43.4 65.0



#20
 Methylene Chloride
 Concen: 12.285 ug/l
 RT: 4.723 min Scan# 476
 Delta R.T. 0.019 min
 Lab File: VY015791.D
 Acq: 02 Oct 2023 20:59

Tgt Ion: 84 Resp: 25813
 Ion Ratio Lower Upper
 84 100
 49 115.5 106.9 160.3
 51 33.6 33.2 49.8
 86 61.5 51.0 76.6

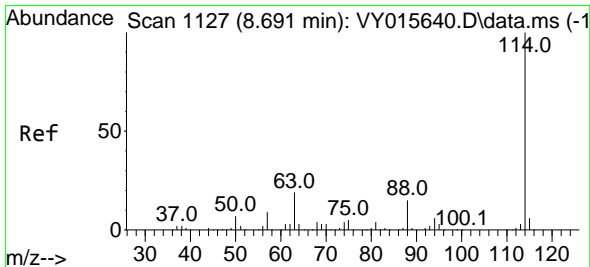
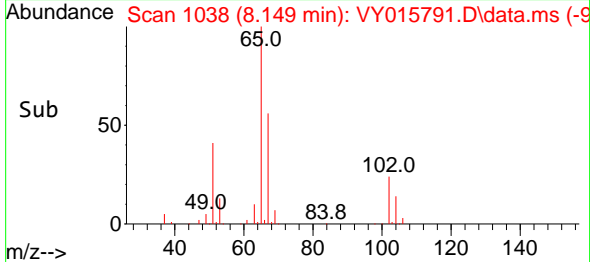
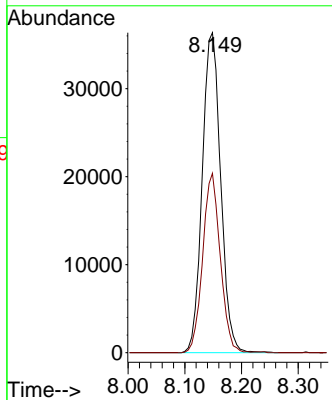
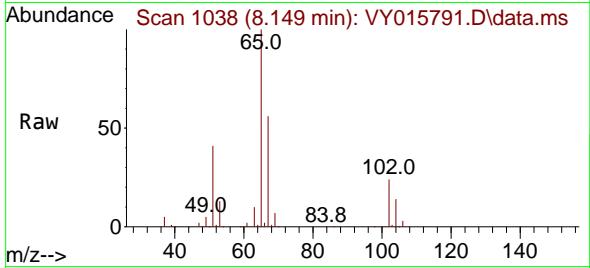




#33
 1,2-Dichloroethane-d4
 Concen: 59.339 ug/l
 RT: 8.149 min Scan# 1038
 Delta R.T. 0.013 min
 Lab File: VY015791.D
 Acq: 02 Oct 2023 20:59

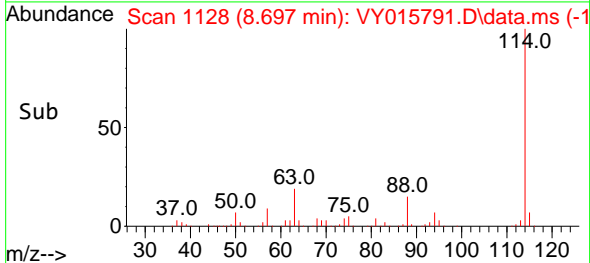
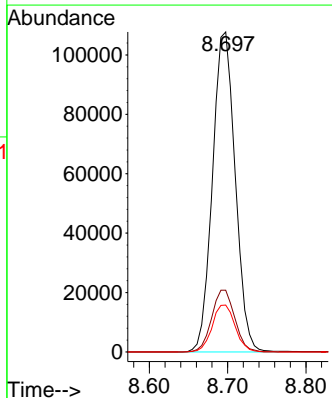
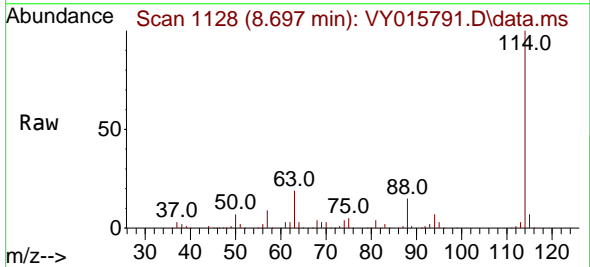
Instrument : MSVOA_Y
 ClientSampleId : PP-20230928-B4A-0-2

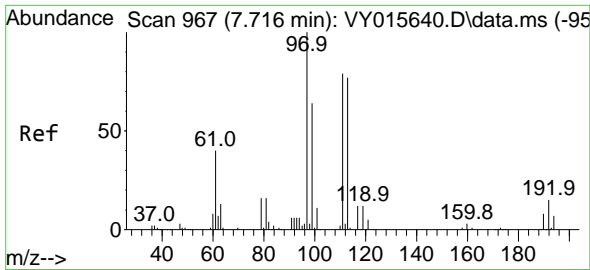
Tgt Ion: 65 Resp: 82012
 Ion Ratio Lower Upper
 65 100
 67 53.5 0.0 101.8



#34
 1,4-Difluorobenzene
 Concen: 50.000 ug/l
 RT: 8.697 min Scan# 1128
 Delta R.T. 0.012 min
 Lab File: VY015791.D
 Acq: 02 Oct 2023 20:59

Tgt Ion: 114 Resp: 217375
 Ion Ratio Lower Upper
 114 100
 63 19.3 0.0 42.4
 88 14.7 0.0 30.6

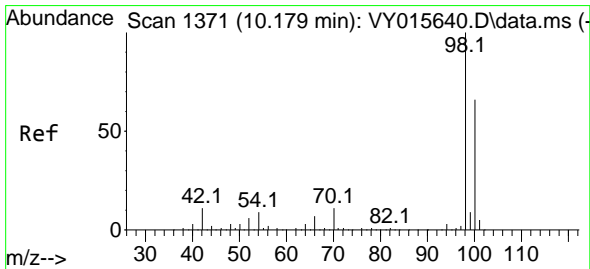
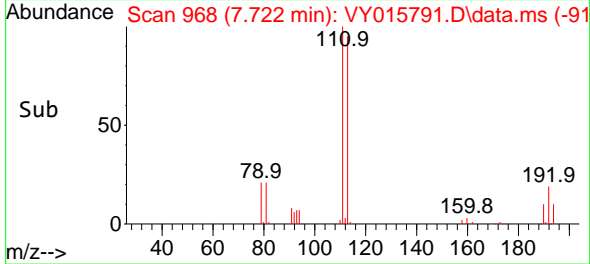
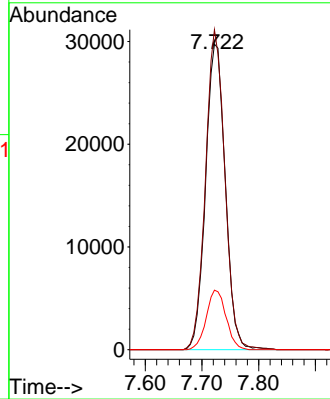
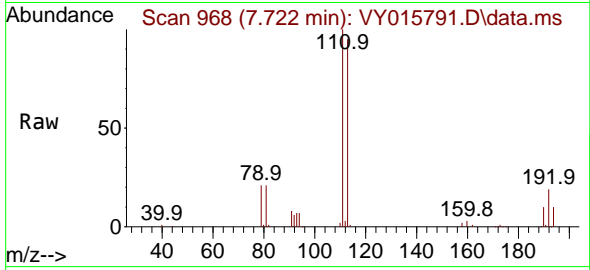




#35
 Dibromofluoromethane
 Concen: 55.238 ug/l
 RT: 7.722 min Scan# 90
 Delta R.T. 0.006 min
 Lab File: VY015791.D
 Acq: 02 Oct 2023 20:59

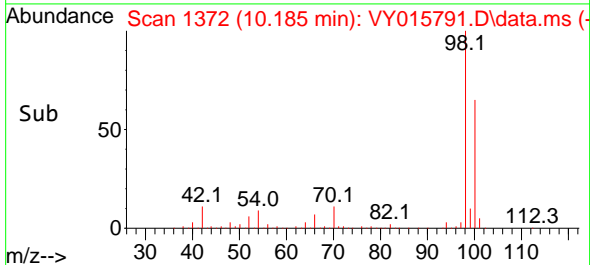
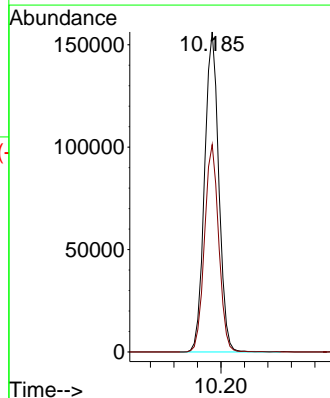
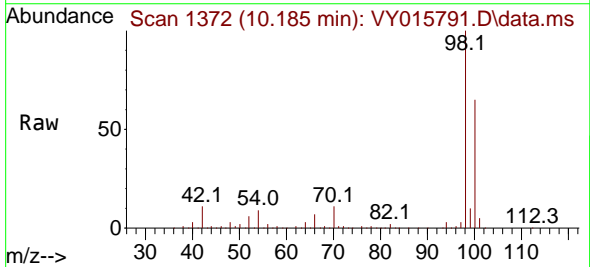
Instrument :
 MSVOA_Y
 ClientSampleId :
 PP-20230928-B4A-0-2

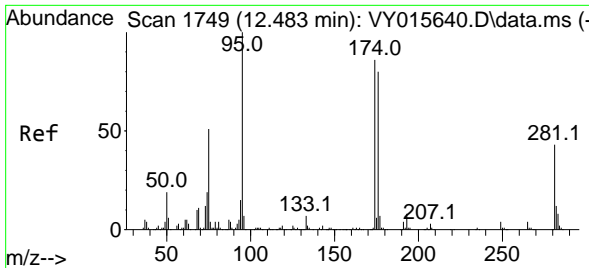
Tgt Ion:113 Resp: 71868
 Ion Ratio Lower Upper
 113 100
 111 102.7 81.3 121.9
 192 19.5 16.9 25.3



#50
 Toluene-d8
 Concen: 59.568 ug/l
 RT: 10.185 min Scan# 1372
 Delta R.T. 0.006 min
 Lab File: VY015791.D
 Acq: 02 Oct 2023 20:59

Tgt Ion: 98 Resp: 262779
 Ion Ratio Lower Upper
 98 100
 100 64.6 50.1 75.1

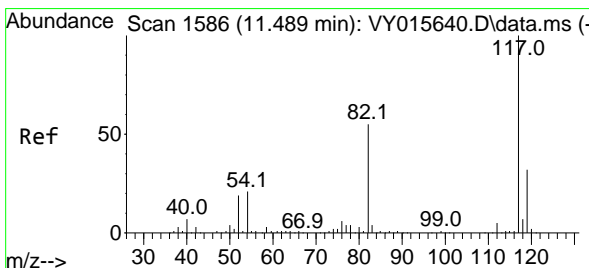
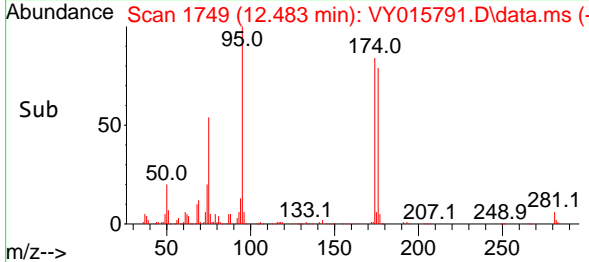
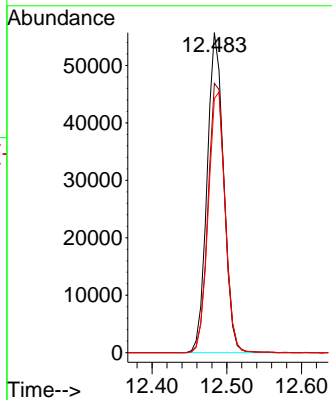
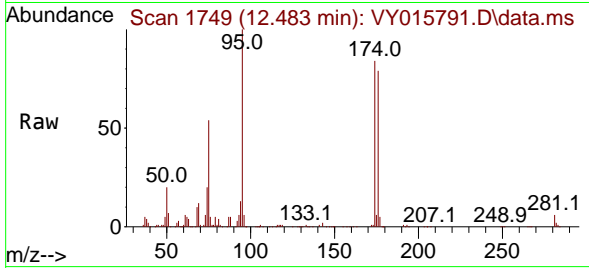




#62
 4-Bromofluorobenzene
 Concen: 49.335 ug/l
 RT: 12.483 min Scan# 1749
 Delta R.T. 0.006 min
 Lab File: VY015791.D
 Acq: 02 Oct 2023 20:59

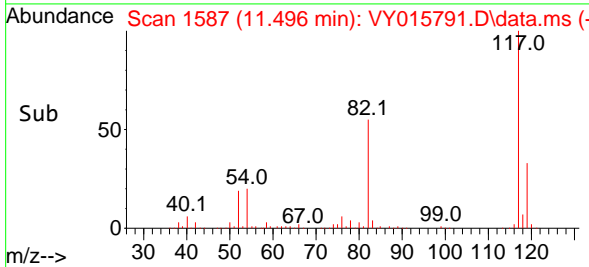
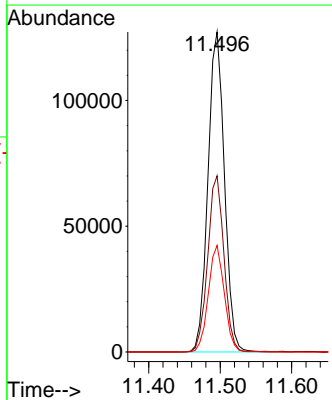
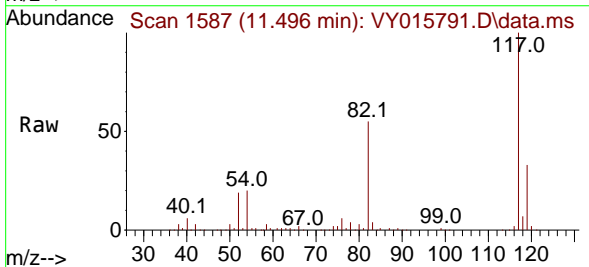
Instrument : MSVOA_Y
 ClientSampleId : PP-20230928-B4A-0-2

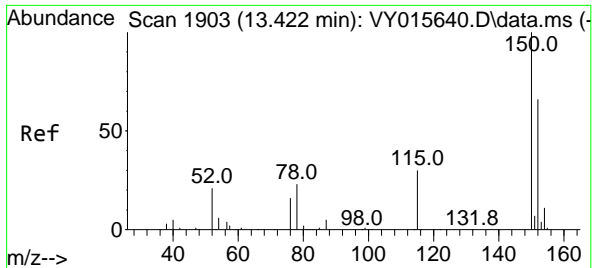
Tgt Ion	Resp	Lower	Upper
95	85408	100	
174	86.6	0.0	178.2
176	83.2	0.0	173.8



#63
 Chlorobenzene-d5
 Concen: 50.000 ug/l
 RT: 11.496 min Scan# 1587
 Delta R.T. 0.007 min
 Lab File: VY015791.D
 Acq: 02 Oct 2023 20:59

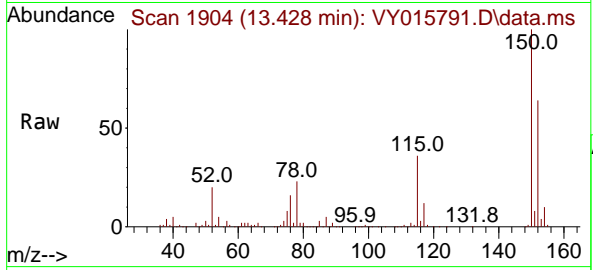
Tgt Ion	Resp	Lower	Upper
117	203597	100	
82	55.0	43.4	65.0
119	33.3	26.3	39.5





#72
 1,4-Dichlorobenzene-d4
 Concen: 50.000 ug/l
 RT: 13.428 min Scan# 1904
 Delta R.T. 0.006 min
 Lab File: VY015791.D
 Acq: 02 Oct 2023 20:59

Instrument : MSVOA_Y
 ClientSampleId : PP-20230928-B4A-0-2



Tgt Ion:152 Resp: 92040

Ion	Ratio	Lower	Upper
152	100		
115	56.7	28.8	86.5
150	156.7	0.0	348.8

