

Data Path : Z:\voasrv\HPCHEM1\MSVOA_Y\Data\VY100421\
 Data File : VY006293.D
 Acq On : 04 Oct 2021 21:47
 Operator : SY/MD
 Sample : M4066-01
 Misc : 6.98G/5ML/MSVOA_Y/SOIL
 ALS Vial : 22 Sample Multiplier: 1

Instrument :
 MSVOA_Y
 ClientSampleId :
 NYPD-69TH-SOIL

Integration Parameters: RTEINT.P
 Integrator: RTE
 Smoothing : ON Filtering: 5
 Sampling : 1 Min Area: 3 % of largest Peak
 Start Thrs: 0.2 Max Peaks: 100
 Stop Thrs : 0 Peak Location: TOP

If leading or trailing edge < 100 prefer < Baseline drop else tangent >
 Peak separation: 5

Method : Z:\voasrv\HPCHEM1\MSVOA_Y\methods\82Y092821S.M
 Title : SW846 8260

Signal : TIC: VY006293.D\data.ms

peak #	R.T. min	first scan	max scan	last scan	PK TY	peak height	corr. area	corr. % max.	% of total
1	3.954	342	350	358	rBV	3379	9674	1.52%	0.268%
2	7.015	840	852	857	rBV2	1998	6901	1.08%	0.191%
3	7.356	898	908	920	rBV	115036	302310	47.46%	8.379%
4	7.722	958	968	974	rBV	86503	205515	32.27%	5.696%
5	7.795	974	980	991	rVB	153410	346049	54.33%	9.591%
6	8.008	1008	1015	1021	rBV5	2844	7121	1.12%	0.197%
7	8.149	1028	1038	1048	rBV	97285	215220	33.79%	5.965%
8	8.551	1097	1104	1110	rVB3	5260	11001	1.73%	0.305%
9	8.691	1119	1127	1137	rBV	228648	456284	71.64%	12.647%
10	9.185	1202	1208	1215	rVB3	3828	7707	1.21%	0.214%
11	10.185	1364	1372	1379	rBV	364280	636917	100.00%	17.653%
12	11.489	1577	1586	1597	rBV	336350	542004	85.10%	15.023%
13	12.483	1741	1749	1757	rBV	258843	402754	63.23%	11.163%
14	13.422	1897	1903	1910	rVB	295136	458477	71.98%	12.707%

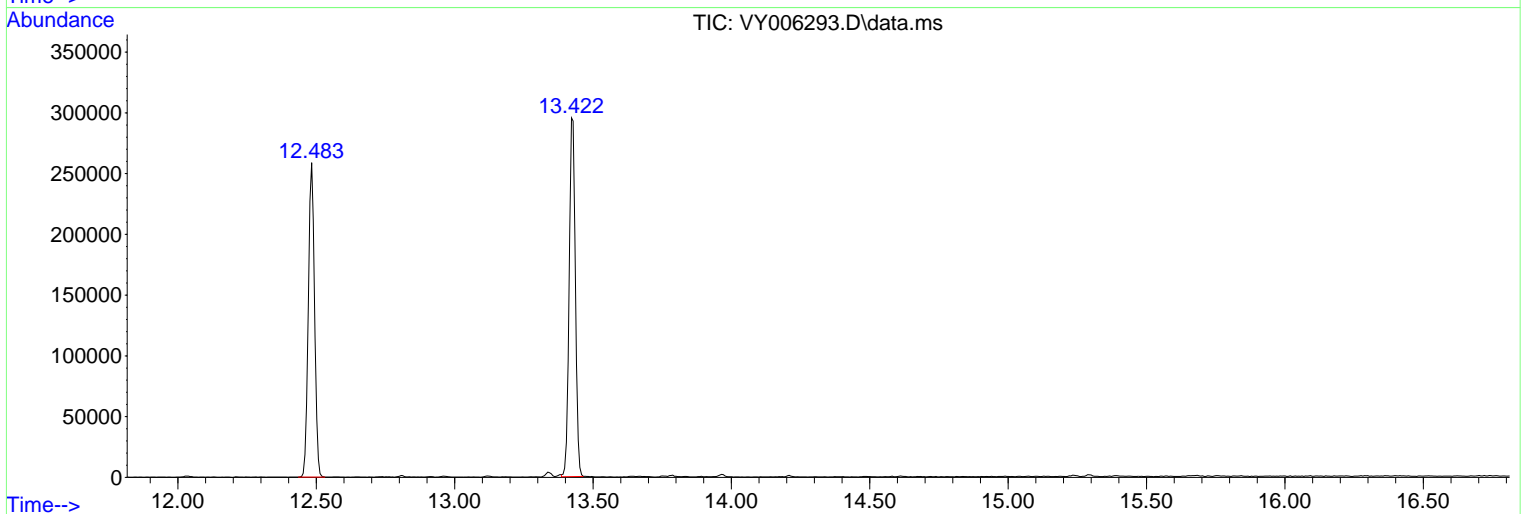
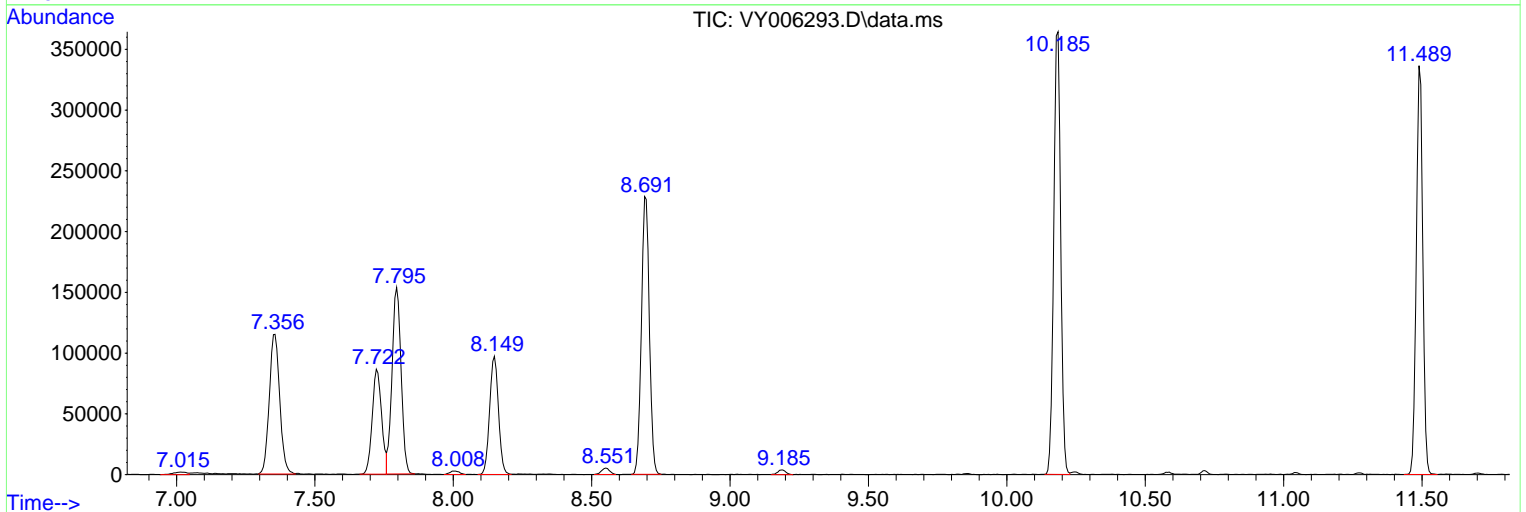
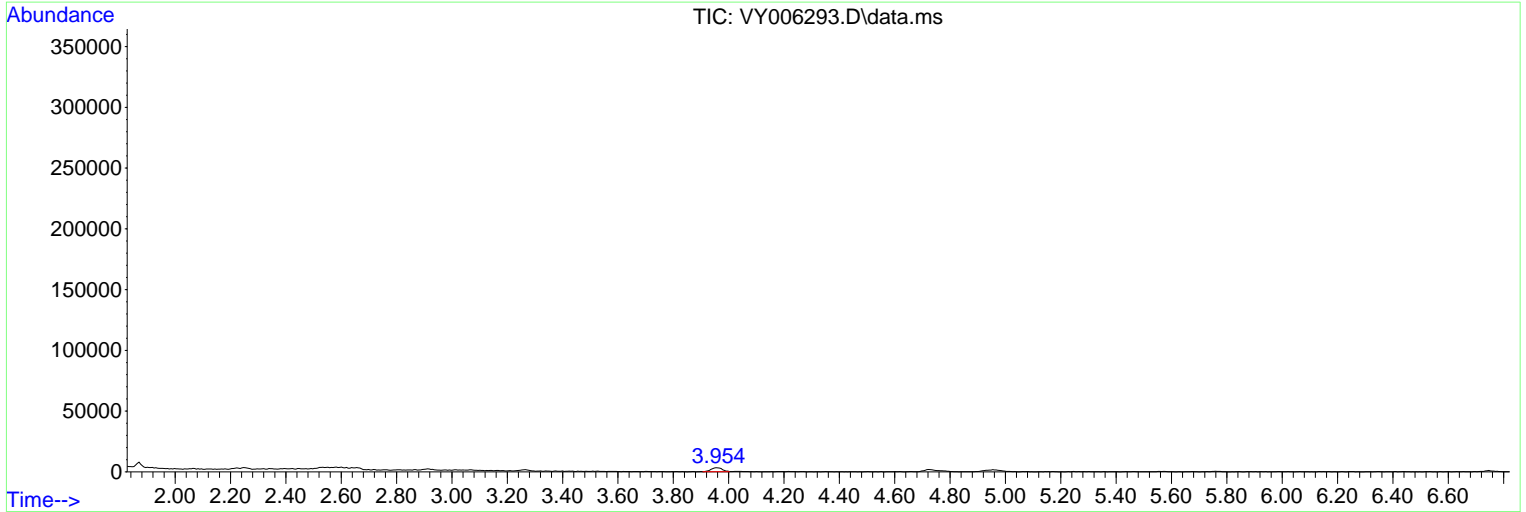
Sum of corrected areas: 3607934

Data Path : Z:\voasrv\HPCHEM1\MSVOA_Y\Data\VY100421\
 Data File : VY006293.D
 Acq On : 04 Oct 2021 21:47
 Operator : SY/MD
 Sample : M4066-01
 Misc : 6.98G/5ML/MSVOA_Y/SOIL
 ALS Vial : 22 Sample Multiplier: 1

Instrument :
 MSVOA_Y
 ClientSampleId :
 NYPD-69TH-SOIL

Quant Method : Z:\voasrv\HPCHEM1\MSVOA_Y\methods\82Y092821S.M
 Quant Title : SW846 8260

TIC Library : C:\Database\NIST20.L
 TIC Integration Parameters: LSCINT.P



Library Search Compound Report

Data Path : Z:\voasrv\HPCHEM1\MSVOA_Y\Data\VY100421\
Data File : VY006293.D
Acq On : 04 Oct 2021 21:47
Operator : SY/MD
Sample : M4066-01
Misc : 6.98G/5ML/MSVOA_Y/SOIL
ALS Vial : 22 Sample Multiplier: 1

Instrument :
MSVOA_Y
ClientSampleId :
NYPD-69TH-SOIL

Quant Method : Z:\voasrv\HPCHEM1\MSVOA_Y\methods\82Y092821S.M
Quant Title : SW846 8260

TIC Library : C:\Database\NIST20.L
TIC Integration Parameters: LSCINT.P

No Library Search Compounds Detected

Data Path : Z:\voasrv\HPCHEM1\MSVOA_Y\Data\VY100421\
Data File : VY006293.D
Acq On : 04 Oct 2021 21:47
Operator : SY/MD
Sample : M4066-01
Misc : 6.98G/5ML/MSVOA_Y/SOIL
ALS Vial : 22 Sample Multiplier: 1

Instrument :
MSVOA_Y
ClientSampleId :
NYPD-69TH-SOIL

Quant Method : Z:\voasrv\HPCHEM1\MSVOA_Y\methods\82Y092821S.M
Quant Title : SW846 8260

TIC Library : C:\Database\NIST20.L
TIC Integration Parameters: LSCINT.P

TIC Top Hit name	RT	EstConc	Units	Response	--Internal Standard--		
					#	RT	Resp Conc
