

Data Path : Z:\voasrv\HPCHEM1\MSVOA_Y\Data\VY100423\
 Data File : VY015837.D
 Acq On : 04 Oct 2023 19:00
 Operator : SY/MD
 Sample : 04731-01
 Misc : 5.08g/5.0mL/MSVOA_Y/SOIL
 ALS Vial : 20 Sample Multiplier: 1

Instrument :
 MSVOA_Y
 ClientSampleId :

Quant Time: Oct 05 06:58:27 2023
 Quant Method : Z:\voasrv\HPCHEM1\MSVOA_Y\methods\82Y091923S.M
 Quant Title : SW846 8260
 QLast Update : Wed Sep 20 01:39:40 2023
 Response via : Initial Calibration

Compound	R.T.	QIon	Response	Conc	Units	Dev(Min)

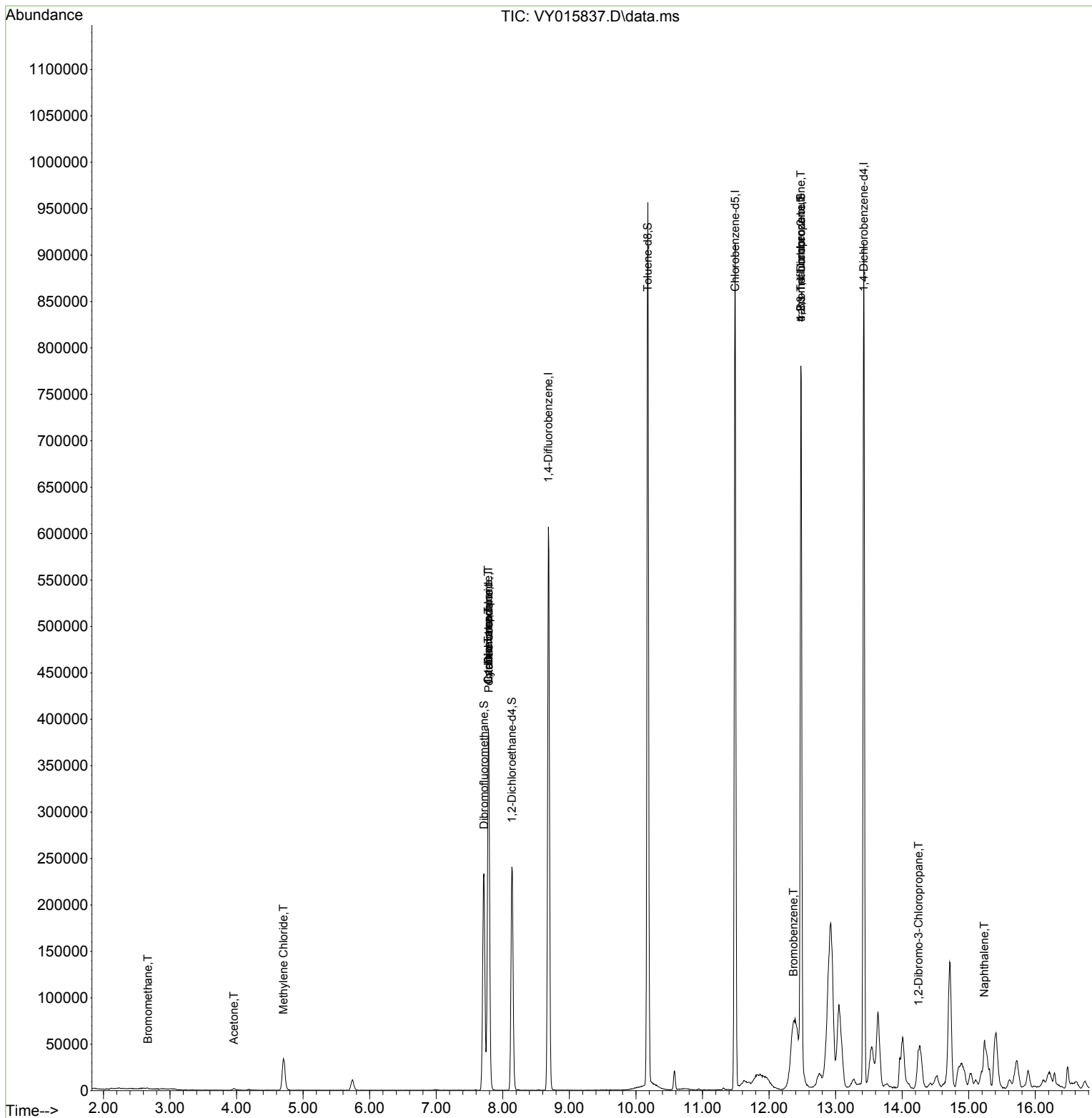
Internal Standards						
1) Pentafluorobenzene	7.789	168	304579	50.000	ug/l	0.00
34) 1,4-Difluorobenzene	8.685	114	528550	50.000	ug/l	0.00
63) Chlorobenzene-d5	11.490	117	489727	50.000	ug/l	0.00
72) 1,4-Dichlorobenzene-d4	13.422	152	233195	50.000	ug/l	0.00
System Monitoring Compounds						
33) 1,2-Dichloroethane-d4	8.137	65	191166	57.044	ug/l	0.00
Spiked Amount	50.000	Range	50 - 163	Recovery	=	114.080%
35) Dibromofluoromethane	7.716	113	164994	52.155	ug/l	0.00
Spiked Amount	50.000	Range	54 - 147	Recovery	=	104.300%
50) Toluene-d8	10.179	98	620318	57.831	ug/l	0.00
Spiked Amount	50.000	Range	58 - 134	Recovery	=	115.660%
62) 4-Bromofluorobenzene	12.477	95	224713	53.383	ug/l	0.00
Spiked Amount	50.000	Range	30 - 143	Recovery	=	106.760%
Target Compounds						
					Qvalue	
5) Bromomethane	2.668	94	168	2.612	ug/l	82
16) Acetone	3.960	43	4069	2.269	ug/l	92
20) Methylene Chloride	4.704	84	26542	2.123	ug/l	87
31) Cyclohexane	7.783	56	5915	1.274	ug/l #	1
36) 1,1-Dichloropropene	7.783	75	23058	4.929	ug/l #	50
38) Carbon Tetrachloride	7.783	117	30295	5.967	ug/l #	16
76) 1,2,3-Trichloropropane	12.477	75	119707	32.177	ug/l #	100
77) Bromobenzene	12.367	156	113889	26.522	ug/l #	1
81) trans-1,4-Dichloro-2-b...	12.477	75	119707	72.460	ug/l #	10
92) 1,2-Dibromo-3-Chloropr...	14.245	75	3961	4.096	ug/l #	11
95) Naphthalene	15.233	128	29703	2.301	ug/l	97

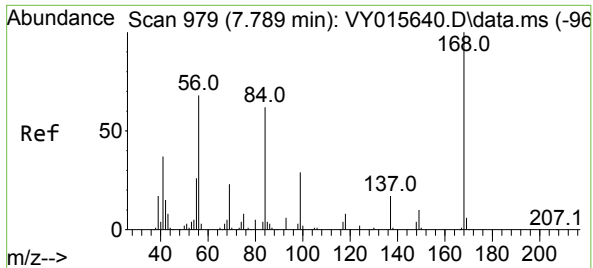
(#) = qualifier out of range (m) = manual integration (+) = signals summed

Data Path : Z:\voasrv\HPCHEM1\MSVOA_Y\Data\VY100423\
 Data File : VY015837.D
 Acq On : 04 Oct 2023 19:00
 Operator : SY/MD
 Sample : 04731-01
 Misc : 5.08g/5.0mL/MSVOA_Y/SOIL
 ALS Vial : 20 Sample Multiplier: 1

Instrument :
 MSVOA_Y
 ClientSampleId :

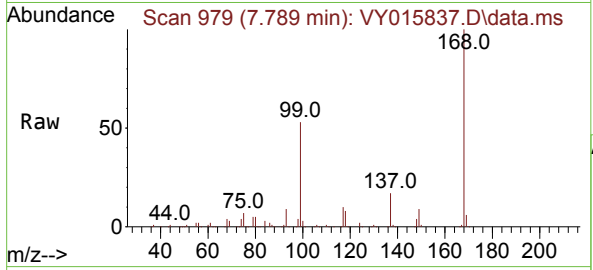
Quant Time: Oct 05 06:58:27 2023
 Quant Method : Z:\voasrv\HPCHEM1\MSVOA_Y\methods\82Y091923S.M
 Quant Title : SW846 8260
 QLast Update : Wed Sep 20 01:39:40 2023
 Response via : Initial Calibration



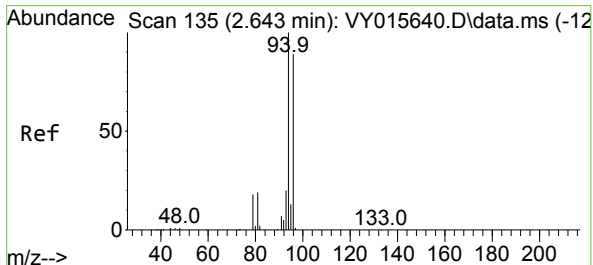
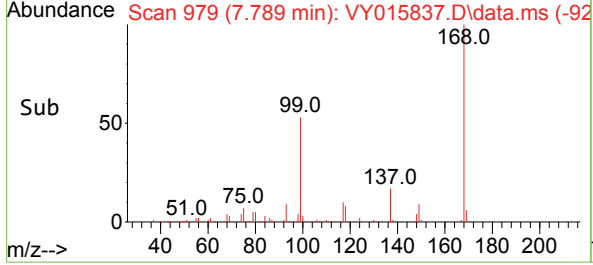
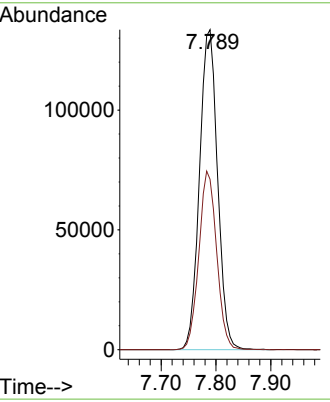


#1
 Pentafluorobenzene
 Concen: 50.000 ug/l
 RT: 7.789 min Scan# 91
 Delta R.T. 0.006 min
 Lab File: VY015837.D
 Acq: 04 Oct 2023 19:00

Instrument :
 MSVOA_Y
 ClientSampleId :

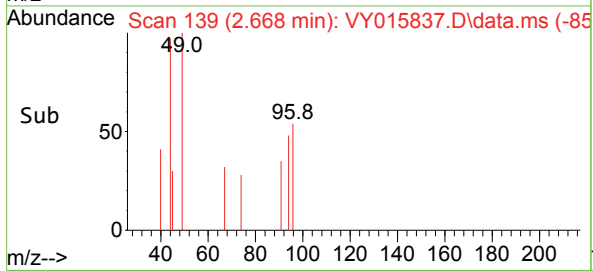
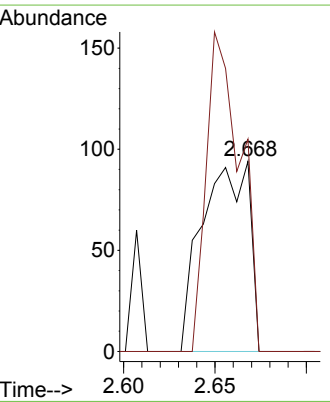
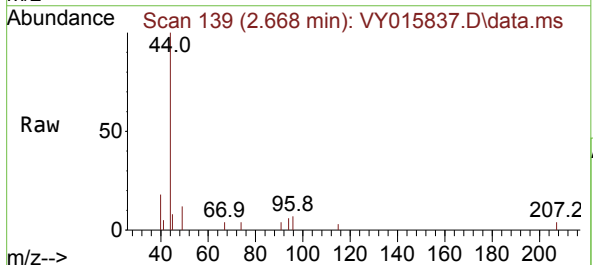


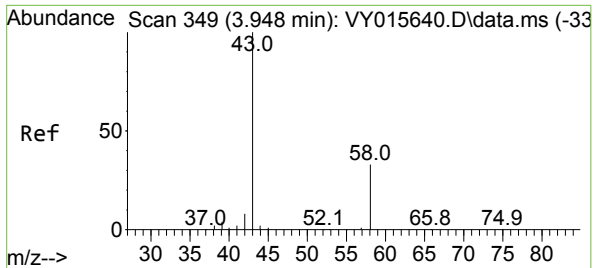
Tgt Ion:168 Resp: 304579
 Ion Ratio Lower Upper
 168 100
 99 53.3 43.4 65.0



#5
 Bromomethane
 Concen: 2.612 ug/l
 RT: 2.668 min Scan# 139
 Delta R.T. 0.031 min
 Lab File: VY015837.D
 Acq: 04 Oct 2023 19:00

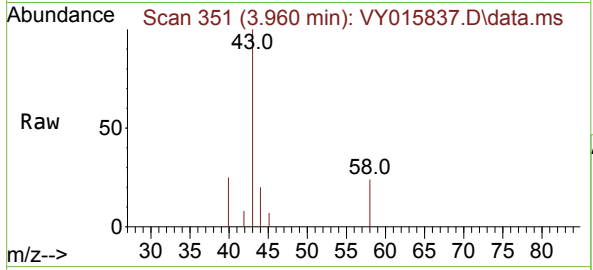
Tgt Ion: 94 Resp: 168
 Ion Ratio Lower Upper
 94 100
 96 111.7 75.8 113.6



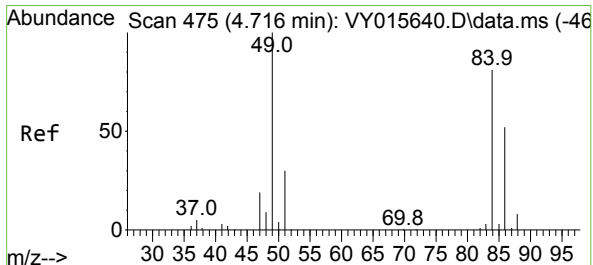
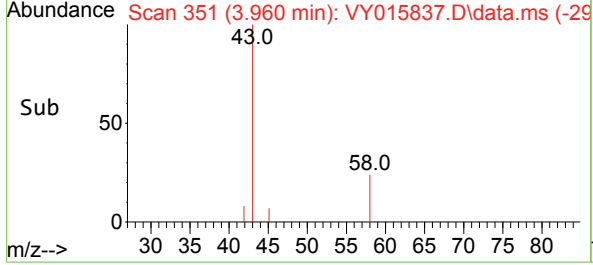
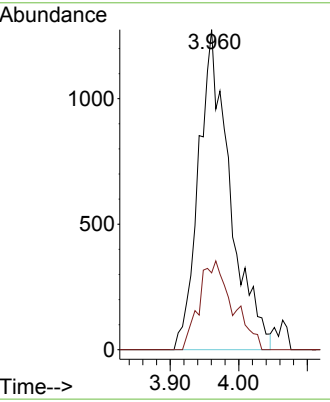


#16
 Acetone
 Concen: 2.269 ug/l
 RT: 3.960 min Scan# 311
 Delta R.T. 0.018 min
 Lab File: VY015837.D
 Acq: 04 Oct 2023 19:00

Instrument : MSVOA_Y
 ClientSampleId :

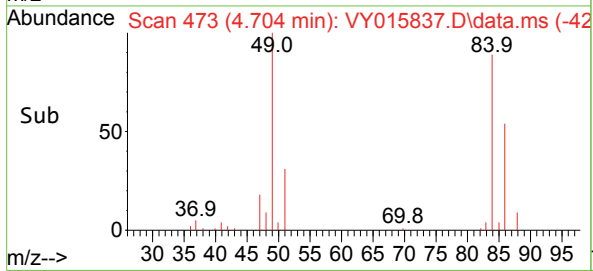
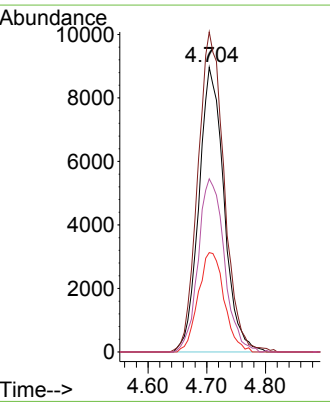
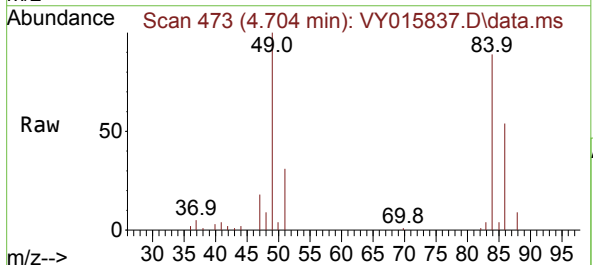


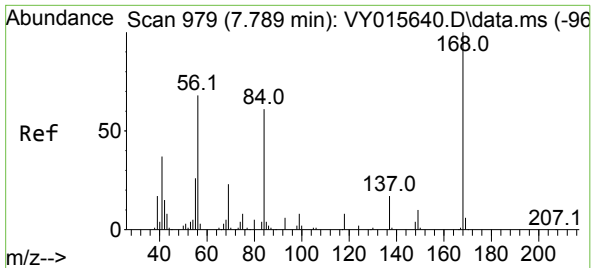
Tgt Ion: 43 Resp: 4069
 Ion Ratio Lower Upper
 43 100
 58 24.0 22.7 34.1



#20
 Methylene Chloride
 Concen: 2.123 ug/l
 RT: 4.704 min Scan# 473
 Delta R.T. 0.000 min
 Lab File: VY015837.D
 Acq: 04 Oct 2023 19:00

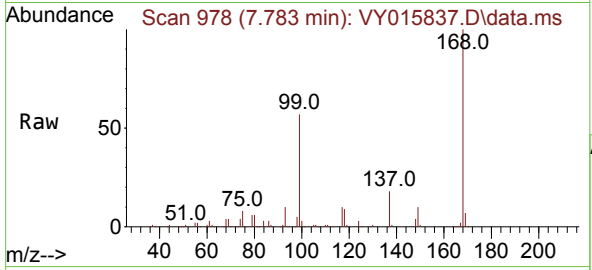
Tgt Ion: 84 Resp: 26542
 Ion Ratio Lower Upper
 84 100
 49 112.4 106.9 160.3
 51 34.9 33.2 49.8
 86 60.8 51.0 76.6



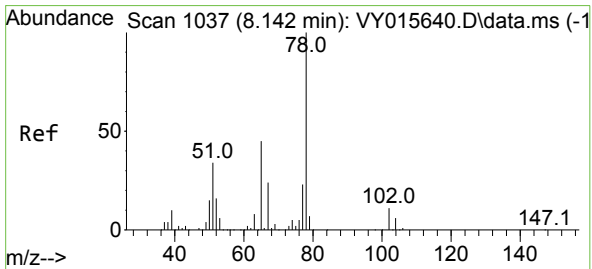
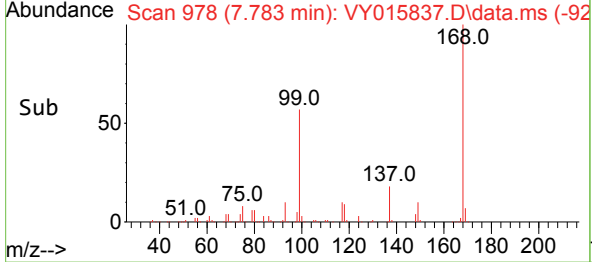
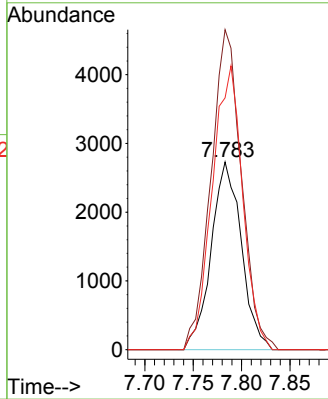


#31
 Cyclohexane
 Concen: 1.274 ug/l
 RT: 7.783 min Scan# 91
 Delta R.T. -0.000 min
 Lab File: VY015837.D
 Acq: 04 Oct 2023 19:00

Instrument :
 MSVOA_Y
 ClientSampleId :

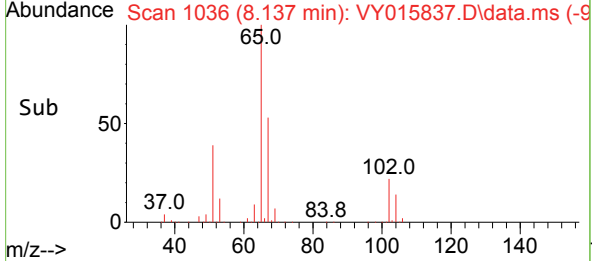
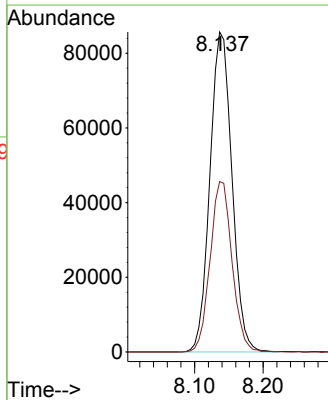
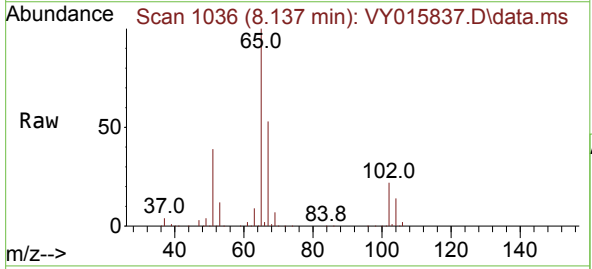


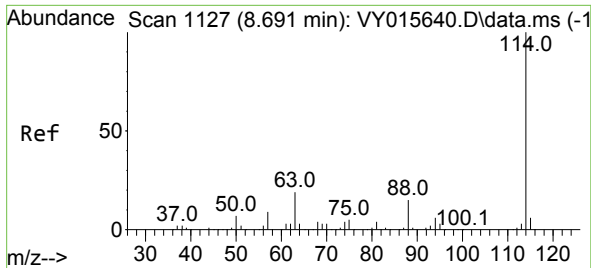
Tgt Ion	Resp	Ion Ratio	Lower	Upper
56	5915	100		
69		170.5	27.8	41.6#
84		134.2	66.4	99.6#



#33
 1,2-Dichloroethane-d4
 Concen: 57.044 ug/l
 RT: 8.137 min Scan# 1036
 Delta R.T. 0.001 min
 Lab File: VY015837.D
 Acq: 04 Oct 2023 19:00

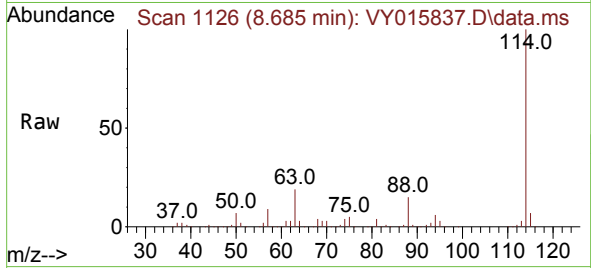
Tgt Ion	Resp	Ion Ratio	Lower	Upper
65	191166	100		
67		53.0	0.0	101.8



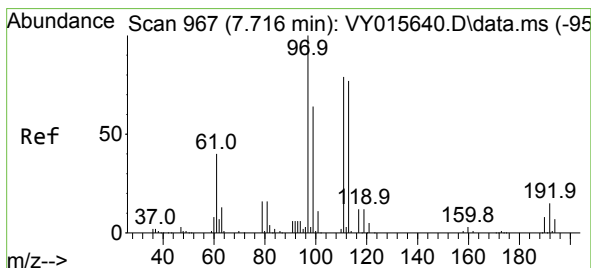
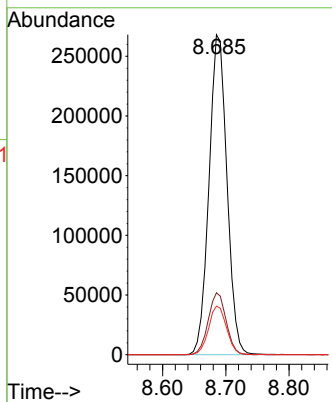
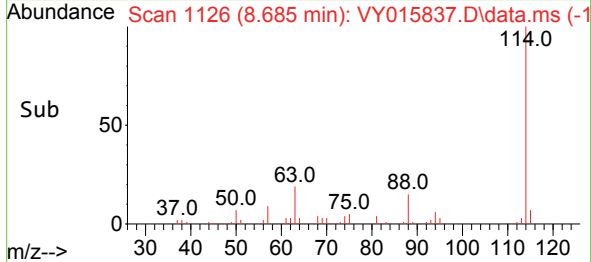


#34
 1,4-Difluorobenzene
 Concen: 50.000 ug/l
 RT: 8.685 min Scan# 1126
 Delta R.T. 0.000 min
 Lab File: VY015837.D
 Acq: 04 Oct 2023 19:00

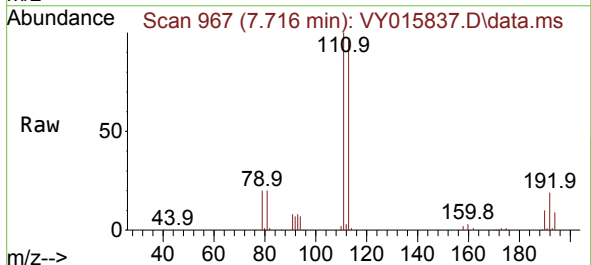
Instrument : MSVOA_Y
 ClientSampleId :



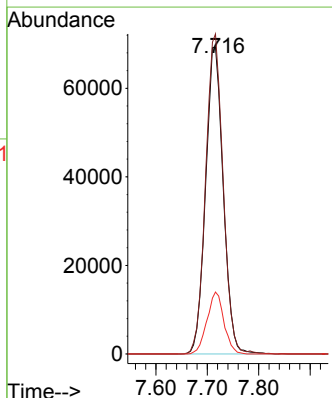
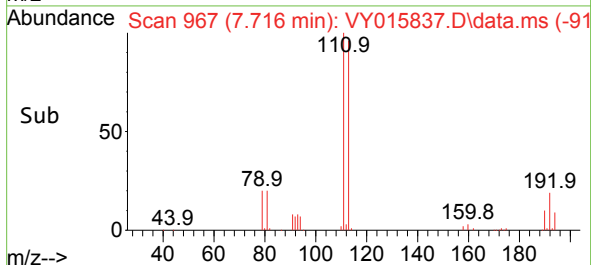
Tgt Ion:114 Resp: 528550
 Ion Ratio Lower Upper
 114 100
 63 19.4 0.0 42.4
 88 15.1 0.0 30.6

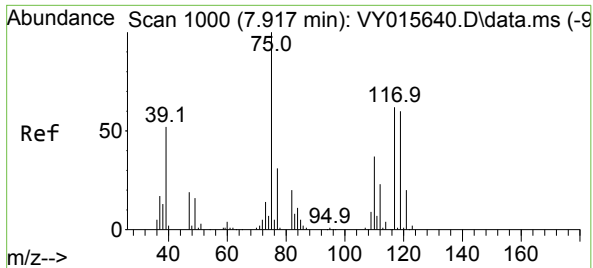


#35
 Dibromofluoromethane
 Concen: 52.155 ug/l
 RT: 7.716 min Scan# 967
 Delta R.T. -0.000 min
 Lab File: VY015837.D
 Acq: 04 Oct 2023 19:00



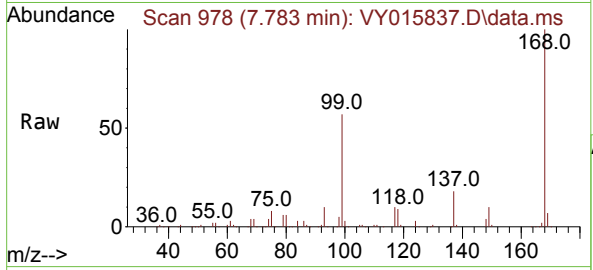
Tgt Ion:113 Resp: 164994
 Ion Ratio Lower Upper
 113 100
 111 103.3 81.3 121.9
 192 19.4 16.9 25.3





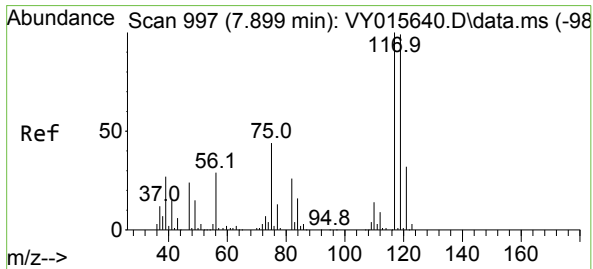
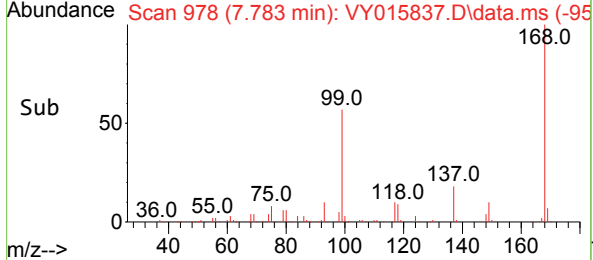
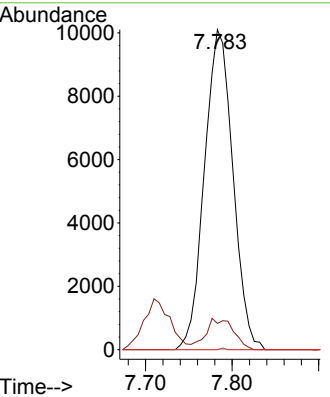
#36
 1,1-Dichloropropene
 Concen: 4.929 ug/l
 RT: 7.783 min Scan# 91
 Delta R.T. -0.128 min
 Lab File: VY015837.D
 Acq: 04 Oct 2023 19:00

Instrument : MSVOA_Y
 ClientSampleId :



Tgt Ion: 75 Resp: 23058

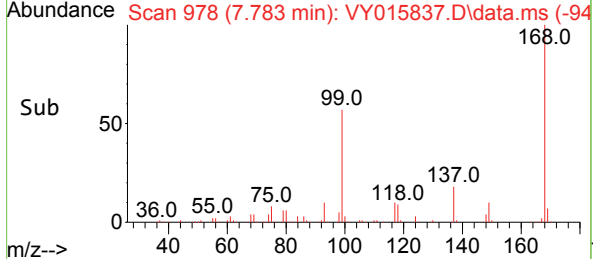
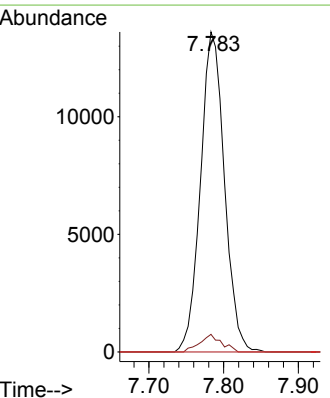
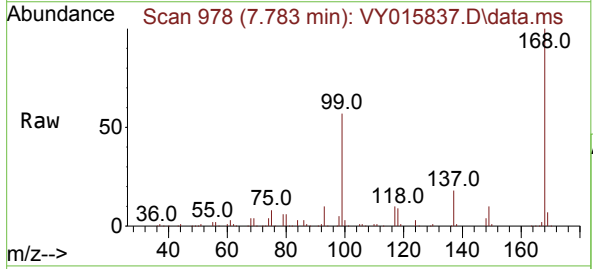
Ion	Ratio	Lower	Upper
75	100		
110	9.4	17.8	53.5#
77	0.1	24.4	36.6#

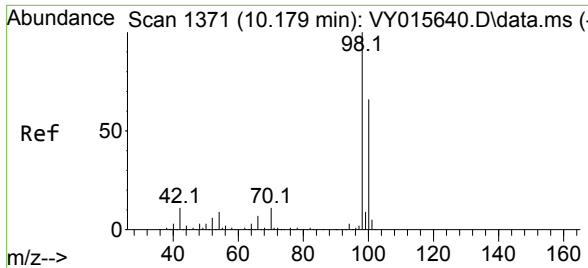


#38
 Carbon Tetrachloride
 Concen: 5.967 ug/l
 RT: 7.783 min Scan# 978
 Delta R.T. -0.110 min
 Lab File: VY015837.D
 Acq: 04 Oct 2023 19:00

Tgt Ion: 117 Resp: 30295

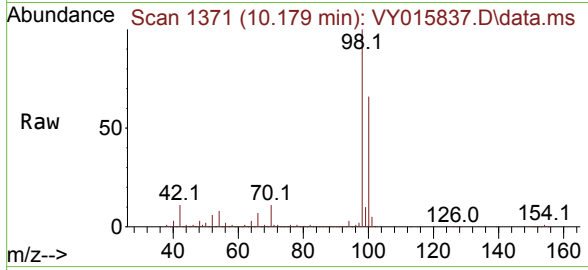
Ion	Ratio	Lower	Upper
117	100		
119	5.5	76.4	114.6#
121	0.0	25.8	38.6#



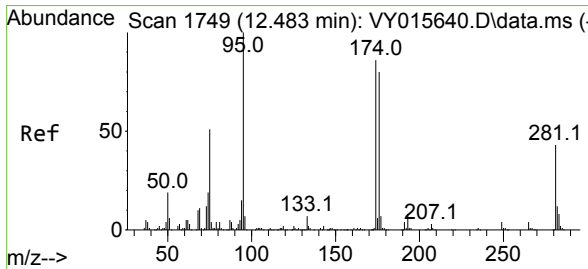
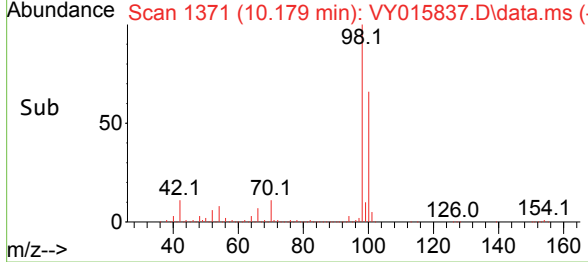
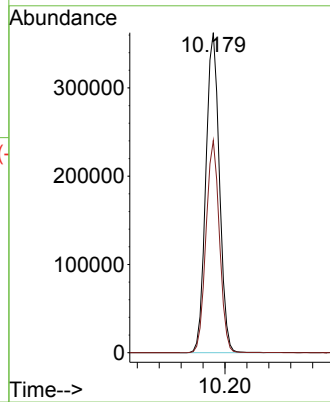


#50
 Toluene-d8
 Concen: 57.831 ug/l
 RT: 10.179 min Scan# 11
 Delta R.T. -0.000 min
 Lab File: VY015837.D
 Acq: 04 Oct 2023 19:00

Instrument :
 MSVOA_Y
 ClientSampleId :

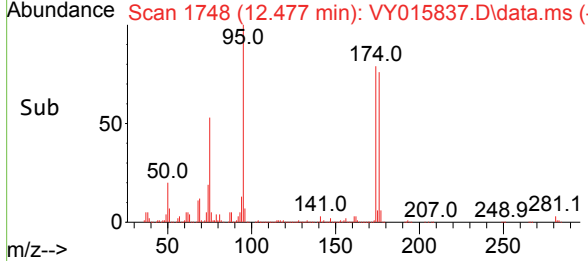
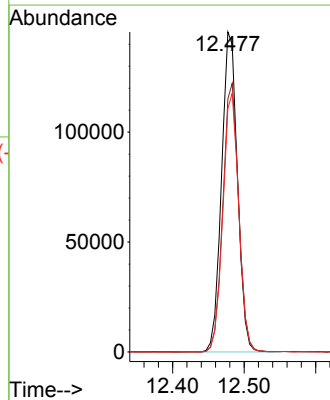
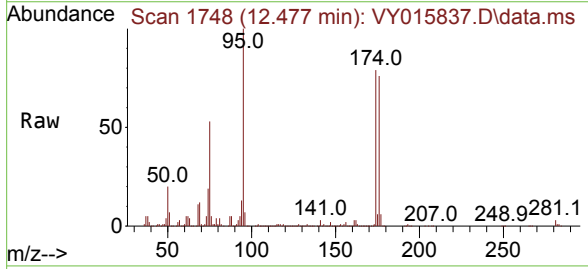


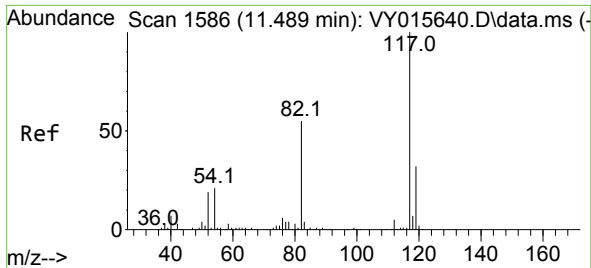
Tgt Ion: 98 Resp: 620318
 Ion Ratio Lower Upper
 98 100
 100 65.7 50.1 75.1



#62
 4-Bromofluorobenzene
 Concen: 53.383 ug/l
 RT: 12.477 min Scan# 1748
 Delta R.T. 0.000 min
 Lab File: VY015837.D
 Acq: 04 Oct 2023 19:00

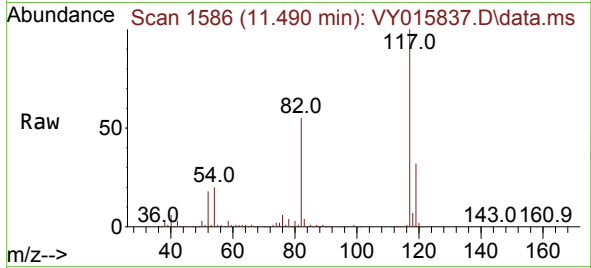
Tgt Ion: 95 Resp: 224713
 Ion Ratio Lower Upper
 95 100
 174 83.6 0.0 178.2
 176 80.7 0.0 173.8



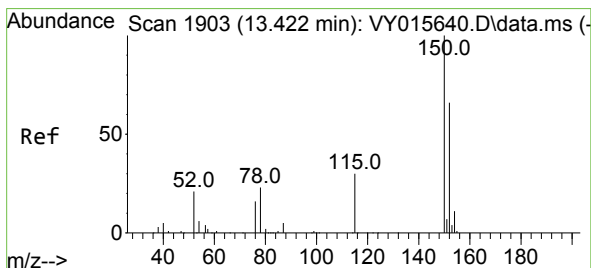
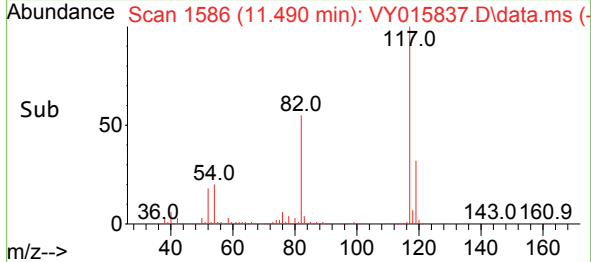
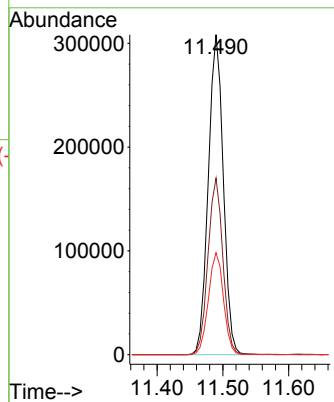


#63
 Chlorobenzene-d5
 Concen: 50.000 ug/l
 RT: 11.490 min Scan# 11
 Delta R.T. 0.001 min
 Lab File: VY015837.D
 Acq: 04 Oct 2023 19:00

Instrument :
 MSVOA_Y
 ClientSampleId :

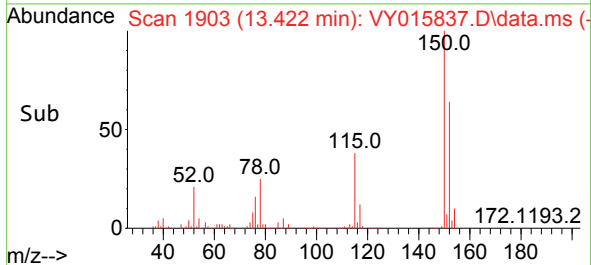
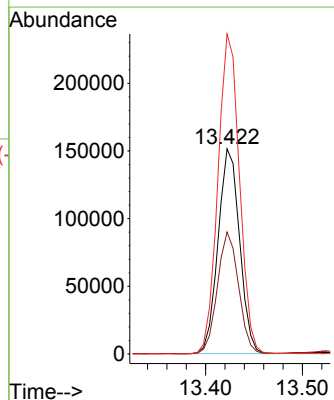
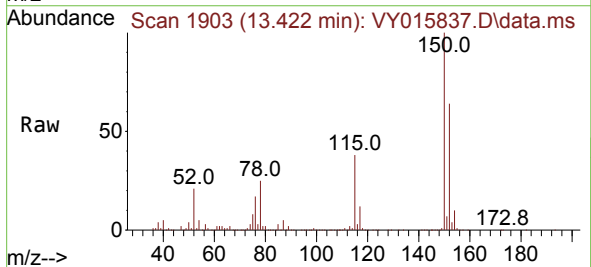


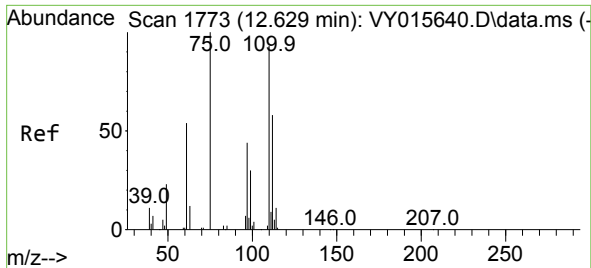
Tgt Ion:117 Resp: 489727
 Ion Ratio Lower Upper
 117 100
 82 55.1 43.4 65.0
 119 31.8 26.3 39.5



#72
 1,4-Dichlorobenzene-d4
 Concen: 50.000 ug/l
 RT: 13.422 min Scan# 1903
 Delta R.T. 0.000 min
 Lab File: VY015837.D
 Acq: 04 Oct 2023 19:00

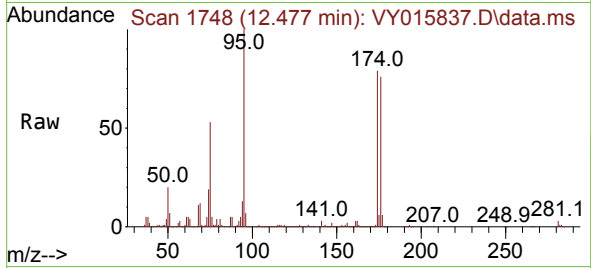
Tgt Ion:152 Resp: 233195
 Ion Ratio Lower Upper
 152 100
 115 58.4 28.8 86.5
 150 156.8 0.0 348.8



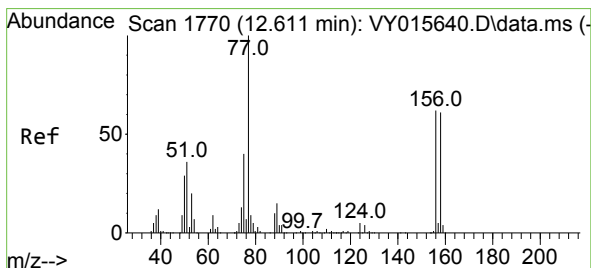
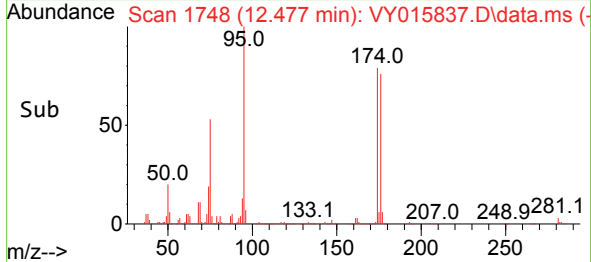
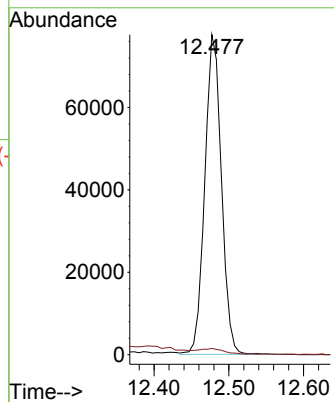


#76
 1,2,3-Trichloropropane
 Concen: 32.177 ug/l
 RT: 12.477 min Scan# 11
 Delta R.T. -0.152 min
 Lab File: VY015837.D
 Acq: 04 Oct 2023 19:00

Instrument :
 MSVOA_Y
 ClientSampleId :

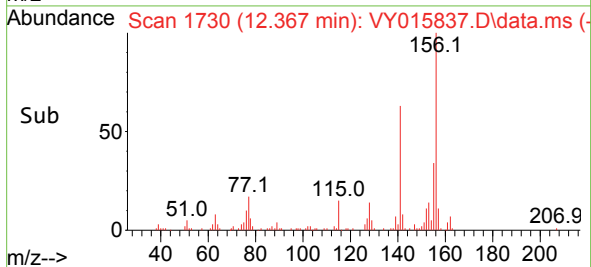
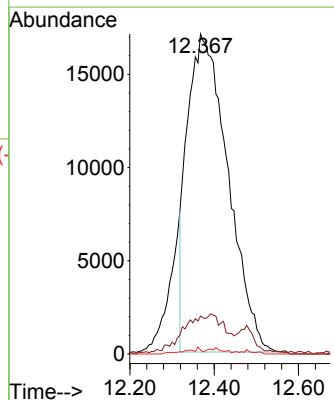
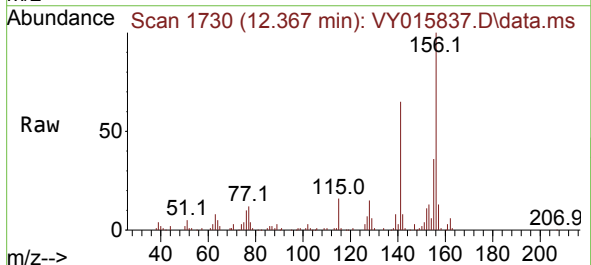


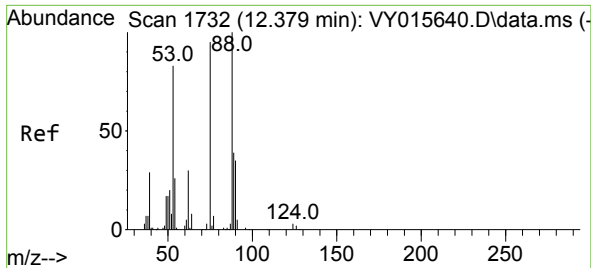
Tgt Ion: 75 Resp: 119707
 Ion Ratio Lower Upper
 75 100
 77 2.9 0.0 0.0#



#77
 Bromobenzene
 Concen: 26.522 ug/l
 RT: 12.367 min Scan# 1730
 Delta R.T. -0.238 min
 Lab File: VY015837.D
 Acq: 04 Oct 2023 19:00

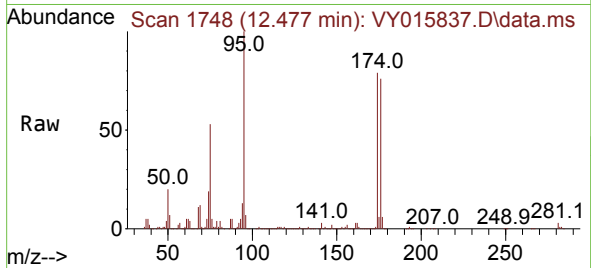
Tgt Ion: 156 Resp: 113889
 Ion Ratio Lower Upper
 156 100
 77 0.0 92.8 278.6#
 158 0.2 48.4 145.3#



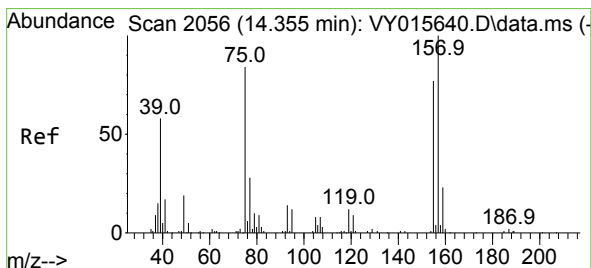
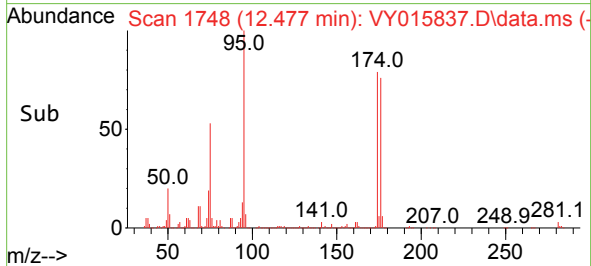
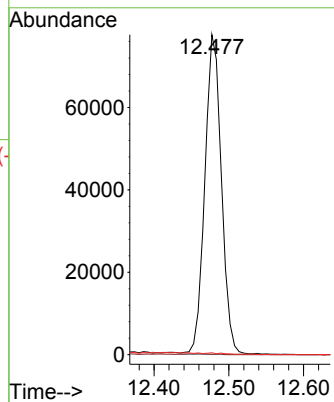


#81
 trans-1,4-Dichloro-2-butene
 Concen: 72.460 ug/l
 RT: 12.477 min Scan# 11
 Delta R.T. 0.097 min
 Lab File: VY015837.D
 Acq: 04 Oct 2023 19:00

Instrument :
 MSVOA_Y
 ClientSampleId :

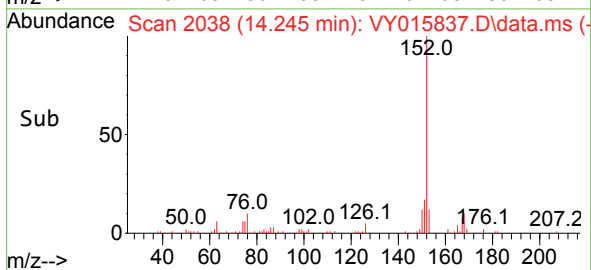
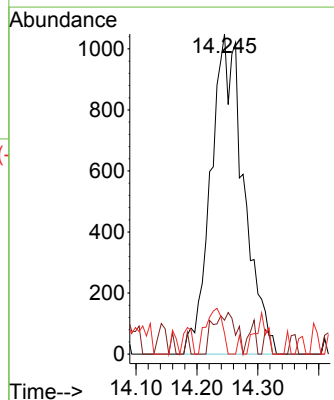
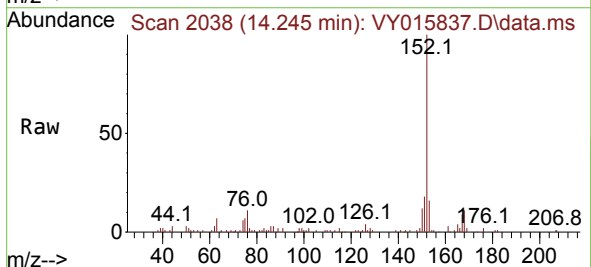


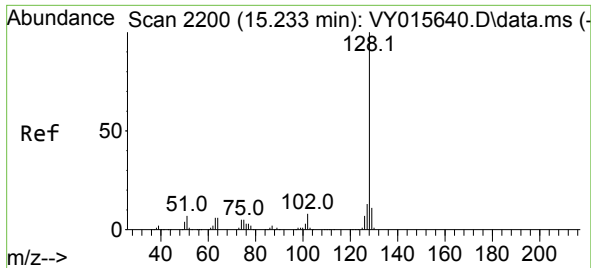
Tgt Ion: 75 Resp: 119707
 Ion Ratio Lower Upper
 75 100
 53 0.0 77.8 116.8#
 89 0.0 37.4 56.0#



#92
 1,2-Dibromo-3-Chloropropane
 Concen: 4.096 ug/l
 RT: 14.245 min Scan# 2038
 Delta R.T. -0.110 min
 Lab File: VY015837.D
 Acq: 04 Oct 2023 19:00

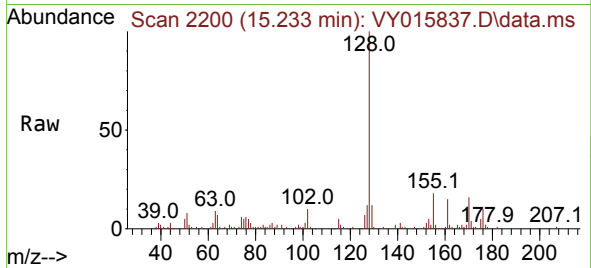
Tgt Ion: 75 Resp: 3961
 Ion Ratio Lower Upper
 75 100
 155 8.8 41.5 124.6#
 157 7.2 51.8 155.5#





#95
 Naphthalene
 Concen: 2.301 ug/l
 RT: 15.233 min Scan# 21
 Delta R.T. -0.000 min
 Lab File: VY015837.D
 Acq: 04 Oct 2023 19:00

Instrument :
 MSVOA_Y
 ClientSampleId :



Tgt Ion:128 Resp: 29703
 Ion Ratio Lower Upper
 128 100
 127 12.0 10.8 16.2
 129 11.9 8.6 13.0

