

Data Path : Z:\voasrv\HPCHEM1\MSVOA_Y\Data\VY100821\
 Data File : VY006342.D
 Acq On : 07 Oct 2021 19:22
 Operator : SY/MD
 Sample : M4117-14
 Misc : 5.44G/5ML/MSVOA_Y/SOIL
 ALS Vial : 16 Sample Multiplier: 1

Instrument :
 MSVOA_Y
 ClientSampleId :
 SB-4(9.5-10.0)

Integration Parameters: RTEINT.P

Integrator: RTE
 Smoothing : ON Filtering: 5
 Sampling : 1 Min Area: 3 % of largest Peak
 Start Thrs: 0.2 Max Peaks: 100
 Stop Thrs : 0 Peak Location: TOP

If leading or trailing edge < 100 prefer < Baseline drop else tangent >
 Peak separation: 5

Method : Z:\voasrv\HPCHEM1\MSVOA_Y\methods\82Y092821S.M
 Title : SW846 8260

Signal : TIC: VY006342.D\data.ms

peak #	R.T. min	first scan	max scan	last scan	PK TY	peak height	corr. area	corr. % max.	% of total
1	4.722	466	476	493	rBV	10382	33315	4.90%	0.883%
2	4.936	500	511	518	rBV4	1893	7035	1.04%	0.186%
3	5.747	637	644	656	rBV4	3867	11706	1.72%	0.310%
4	7.509	927	933	941	rVB3	3991	9488	1.40%	0.251%
5	7.722	958	968	974	rBV	91679	216385	31.84%	5.735%
6	7.795	974	980	991	rVB	159097	347129	51.08%	9.200%
7	8.149	1027	1038	1048	rVB	99942	229469	33.77%	6.082%
8	8.691	1119	1127	1140	rBV	241534	477925	70.33%	12.667%
9	10.185	1364	1372	1380	rBV	392291	679577	100.00%	18.011%
10	10.581	1430	1437	1443	rBV2	18392	33538	4.94%	0.889%
11	10.953	1492	1498	1506	rBV	9163	17990	2.65%	0.477%
12	11.489	1579	1586	1598	rBV	371241	597073	87.86%	15.825%
13	12.483	1740	1749	1757	rBV2	308515	483907	71.21%	12.825%
14	13.068	1841	1845	1850	rVB3	4769	7510	1.11%	0.199%
15	13.282	1870	1880	1885	rBV3	8905	15420	2.27%	0.409%
16	13.422	1893	1903	1909	rBV	364786	568723	83.69%	15.073%
17	13.477	1909	1912	1922	rVB2	7962	16670	2.45%	0.442%
18	13.959	1987	1991	2000	rVB2	4413	7684	1.13%	0.204%
19	15.318	2209	2214	2220	rVB	7982	12516	1.84%	0.332%

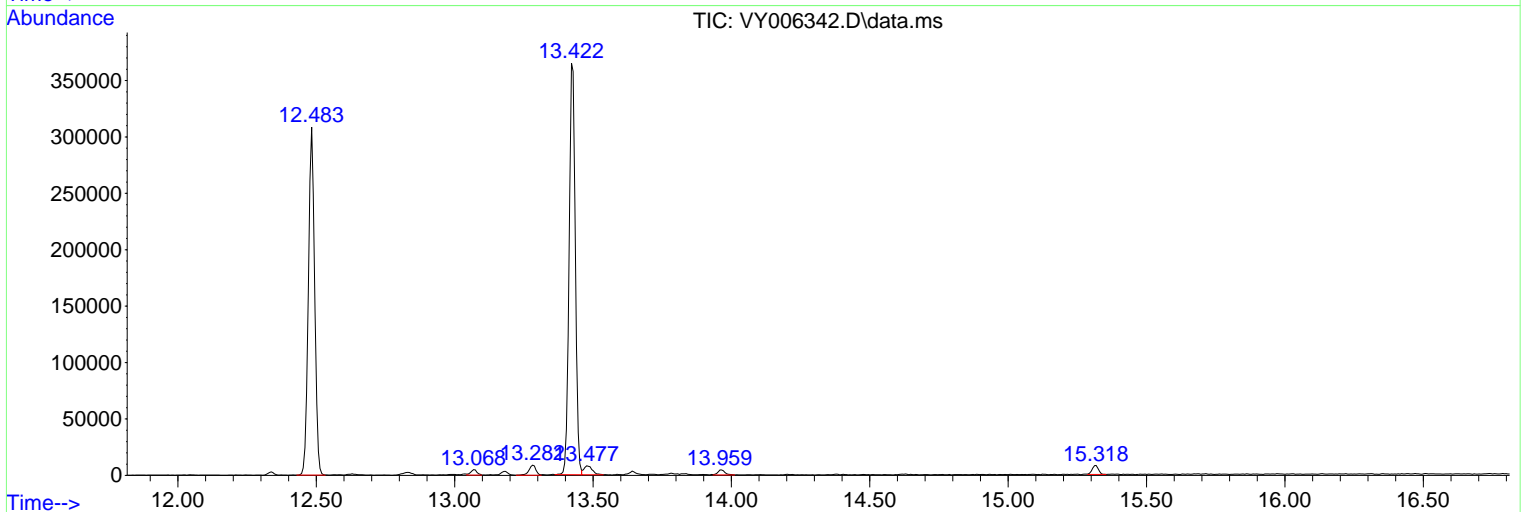
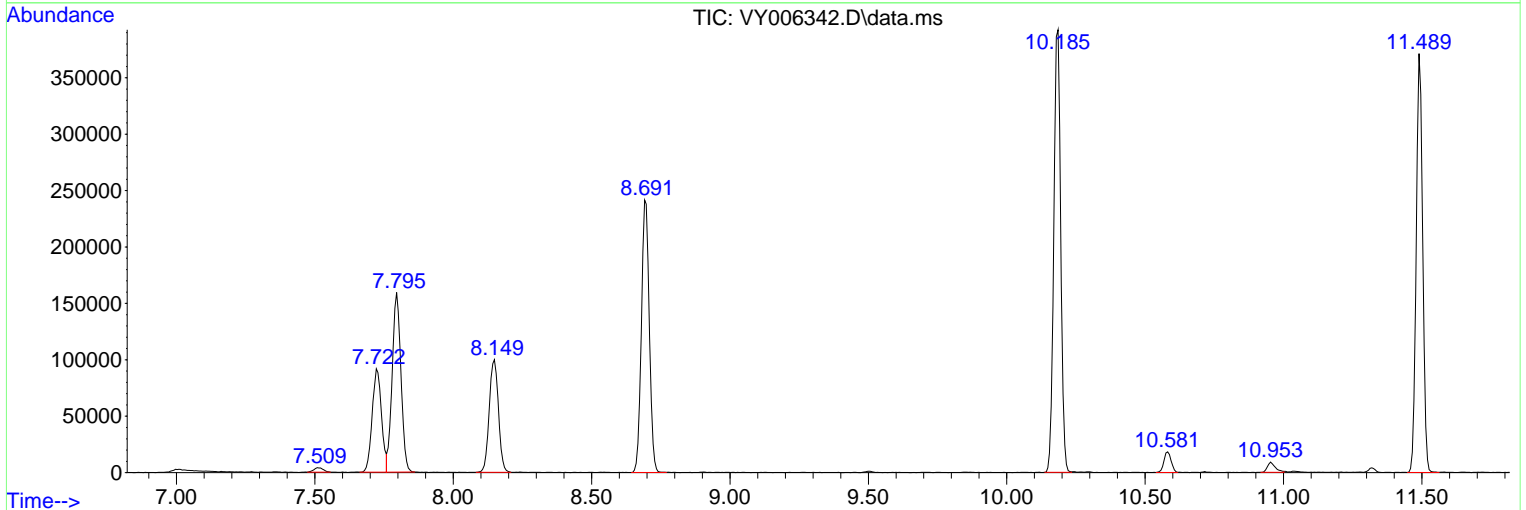
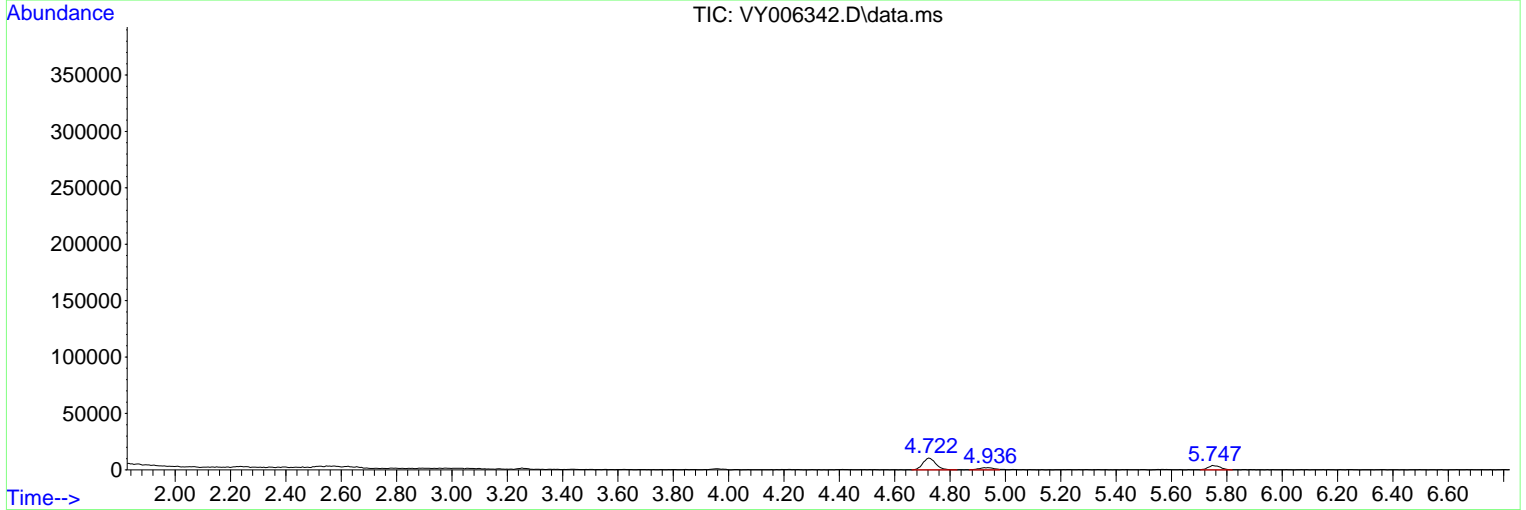
Sum of corrected areas: 3773060

Data Path : Z:\voasrv\HPCHEM1\MSVOA_Y\Data\VY100821\
 Data File : VY006342.D
 Acq On : 07 Oct 2021 19:22
 Operator : SY/MD
 Sample : M4117-14
 Misc : 5.44G/5ML/MSVOA_Y/SOIL
 ALS Vial : 16 Sample Multiplier: 1

Instrument :
 MSVOA_Y
 ClientSampleId :
 SB-4(9.5-10.0)

Quant Method : Z:\voasrv\HPCHEM1\MSVOA_Y\methods\82Y092821S.M
 Quant Title : SW846 8260

TIC Library : C:\Database\NIST20.L
 TIC Integration Parameters: LSCINT.P



Library Search Compound Report

Data Path : Z:\voasrv\HPCHEM1\MSVOA_Y\Data\VY100821\
Data File : VY006342.D
Acq On : 07 Oct 2021 19:22
Operator : SY/MD
Sample : M4117-14
Misc : 5.44G/5ML/MSVOA_Y/SOIL
ALS Vial : 16 Sample Multiplier: 1

Instrument :
MSVOA_Y
ClientSampleId :
SB-4(9.5-10.0)

Quant Method : Z:\voasrv\HPCHEM1\MSVOA_Y\methods\82Y092821S.M
Quant Title : SW846 8260

TIC Library : C:\Database\NIST20.L
TIC Integration Parameters: LSCINT.P

No Library Search Compounds Detected

Data Path : Z:\voasrv\HPCHEM1\MSVOA_Y\Data\VY100821\
Data File : VY006342.D
Acq On : 07 Oct 2021 19:22
Operator : SY/MD
Sample : M4117-14
Misc : 5.44G/5ML/MSVOA_Y/SOIL
ALS Vial : 16 Sample Multiplier: 1

Instrument :
MSVOA_Y
ClientSampleId :
SB-4(9.5-10.0)

Quant Method : Z:\voasrv\HPCHEM1\MSVOA_Y\methods\82Y092821S.M
Quant Title : SW846 8260

TIC Library : C:\Database\NIST20.L
TIC Integration Parameters: LSCINT.P

TIC Top Hit name	RT	EstConc	Units	Response	#	RT	Resp	Conc
------------------	----	---------	-------	----------	---	----	------	------
