

Data Path : Z:\voasrv\HPCHEM1\MSVOA_Y\Data\VY101123\
 Data File : VY015918.D
 Acq On : 11 Oct 2023 13:00
 Operator : SY/MD
 Sample : 04817-04RE
 Misc : 5.02g/5.0mL/MSVOA_Y/SOIL
 ALS Vial : 9 Sample Multiplier: 1

Instrument :
 MSVOA_Y
 ClientSampleId :

Quant Time: Oct 12 01:56:37 2023
 Quant Method : Z:\voasrv\HPCHEM1\MSVOA_Y\methods\82Y100923S.M
 Quant Title : SW846 8260
 QLast Update : Tue Oct 10 07:06:18 2023
 Response via : Initial Calibration

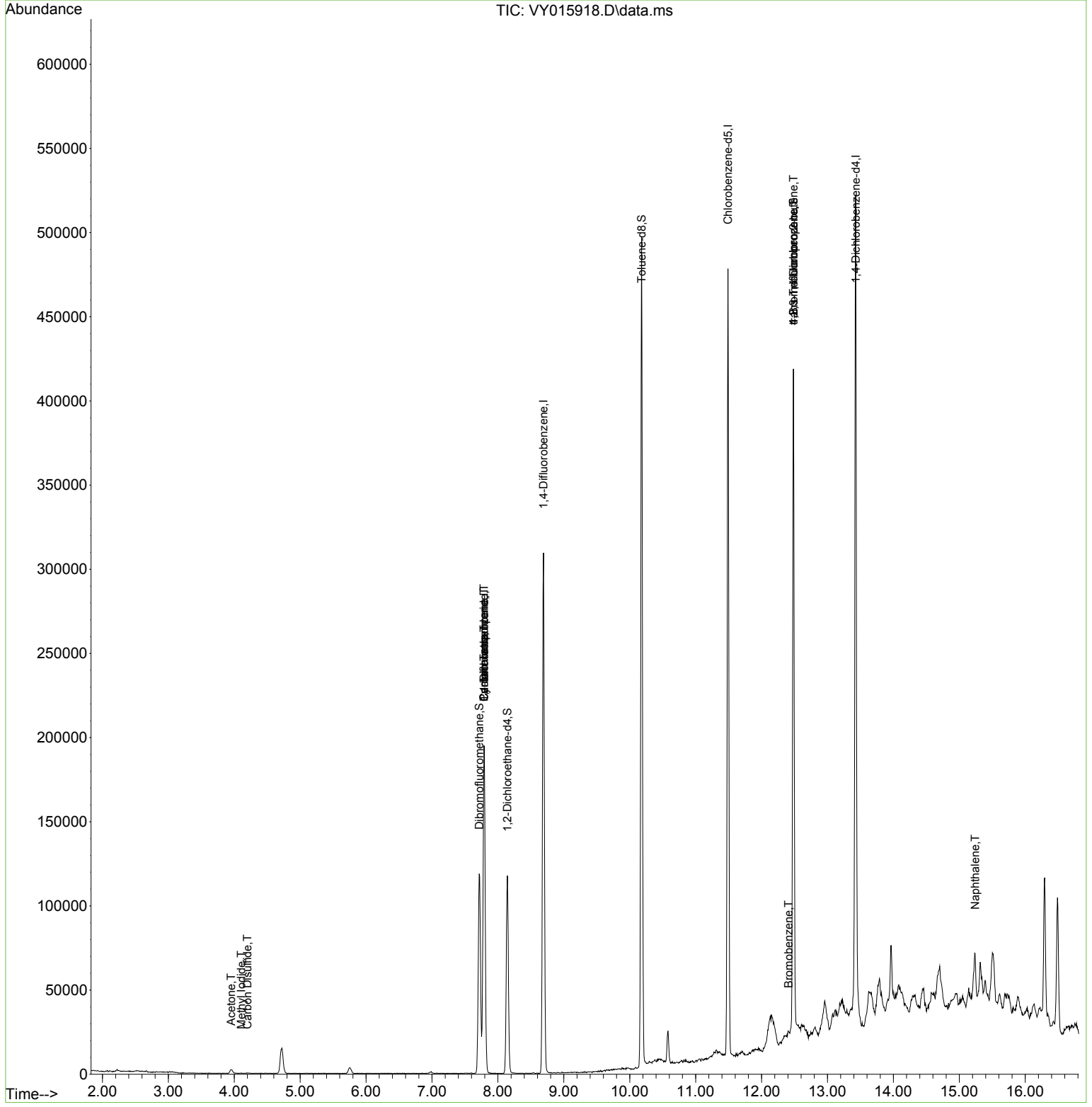
| Compound | R.T. | QIon | Response | Conc | Units | Dev(Min) |
|-------------------------------|--------|-------|----------|-----------|--------|----------|
| ----- | | | | | | |
| Internal Standards | | | | | | |
| 1) Pentafluorobenzene | 7.789 | 168 | 153402 | 50.000 | ug/l | 0.00 |
| 34) 1,4-Difluorobenzene | 8.691 | 114 | 269032 | 50.000 | ug/l | 0.00 |
| 63) Chlorobenzene-d5 | 11.490 | 117 | 258338 | 50.000 | ug/l | 0.00 |
| 72) 1,4-Dichlorobenzene-d4 | 13.428 | 152 | 121452 | 50.000 | ug/l | 0.00 |
| System Monitoring Compounds | | | | | | |
| 33) 1,2-Dichloroethane-d4 | 8.143 | 65 | 90642 | 65.668 | ug/l | 0.00 |
| Spiked Amount | 50.000 | Range | 50 - 163 | Recovery | = | 131.340% |
| 35) Dibromofluoromethane | 7.716 | 113 | 86750 | 57.810 | ug/l | 0.00 |
| Spiked Amount | 50.000 | Range | 54 - 147 | Recovery | = | 115.620% |
| 50) Toluene-d8 | 10.179 | 98 | 324455 | 65.606 | ug/l | 0.00 |
| Spiked Amount | 50.000 | Range | 58 - 134 | Recovery | = | 131.220% |
| 62) 4-Bromofluorobenzene | 12.483 | 95 | 116087 | 57.791 | ug/l | 0.00 |
| Spiked Amount | 50.000 | Range | 30 - 143 | Recovery | = | 115.580% |
| Target Compounds | | | | | | |
| | | | | | Qvalue | |
| 10) Methyl Iodide | 4.107 | 142 | 123 | 2.374 | ug/l # | 88 |
| 16) Acetone | 3.954 | 43 | 4268 | 12.213 | ug/l # | 84 |
| 17) Carbon Disulfide | 4.198 | 76 | 142 | 2.828 | ug/l # | 76 |
| 20) Methylene Chloride | 4.723 | 84 | 12161 | Below Cal | | 86 |
| 31) Cyclohexane | 7.789 | 56 | 2987 | 2.021 | ug/l # | 1 |
| 36) 1,1-Dichloropropene | 7.789 | 75 | 11920 | 7.172 | ug/l # | 50 |
| 38) Carbon Tetrachloride | 7.789 | 117 | 15030 | 7.530 | ug/l # | 16 |
| 76) 1,2,3-Trichloropropane | 12.483 | 75 | 58856 | 41.512 | ug/l # | 100 |
| 77) Bromobenzene | 12.410 | 156 | 3550 | 1.890 | ug/l # | 1 |
| 81) trans-1,4-Dichloro-2-b... | 12.483 | 75 | 58856 | 92.053 | ug/l # | 11 |
| 95) Naphthalene | 15.239 | 128 | 18265 | 3.504 | ug/l | 98 |
| ----- | | | | | | |

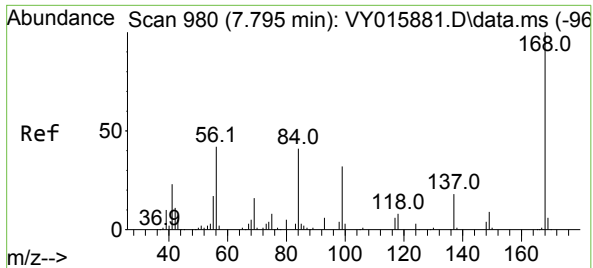
(#) = qualifier out of range (m) = manual integration (+) = signals summed

Data Path : Z:\voasrv\HPCHEM1\MSVOA_Y\Data\VY011123\
 Data File : VY015918.D
 Acq On : 11 Oct 2023 13:00
 Operator : SY/MD
 Sample : 04817-04RE
 Misc : 5.02g/5.0mL/MSVOA_Y/SOIL
 ALS Vial : 9 Sample Multiplier: 1

Instrument :
 MSVOA_Y
 ClientSampleId :

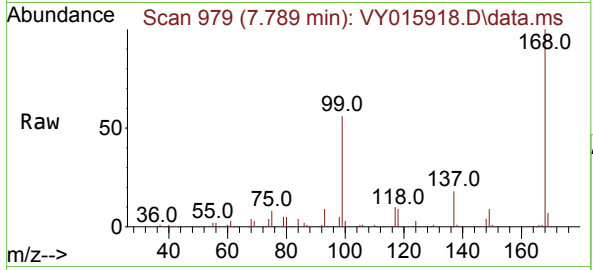
Quant Time: Oct 12 01:56:37 2023
 Quant Method : Z:\voasrv\HPCHEM1\MSVOA_Y\methods\82Y100923S.M
 Quant Title : SW846 8260
 QLast Update : Tue Oct 10 07:06:18 2023
 Response via : Initial Calibration



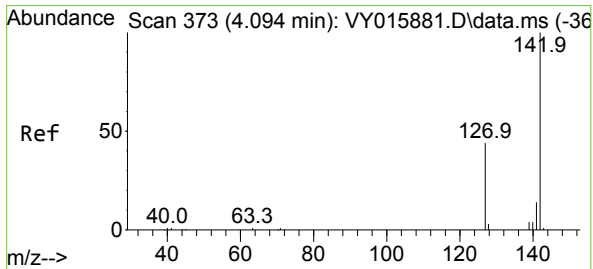
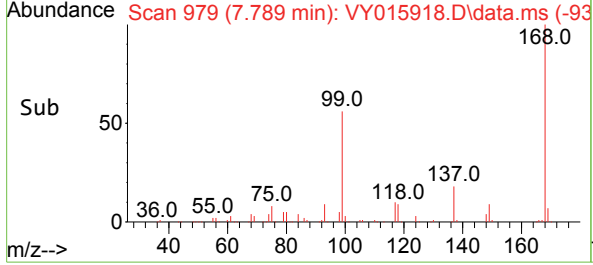
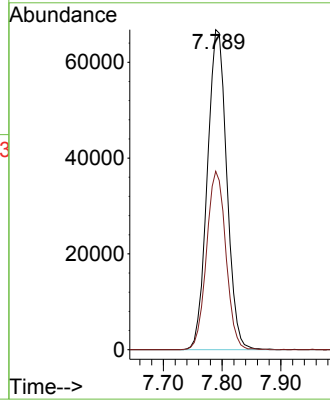


#1
 Pentafluorobenzene
 Concen: 50.000 ug/l
 RT: 7.789 min Scan# 91
 Delta R.T. -0.006 min
 Lab File: VY015918.D
 Acq: 11 Oct 2023 13:00

Instrument :
 MSVOA_Y
 ClientSampleId :

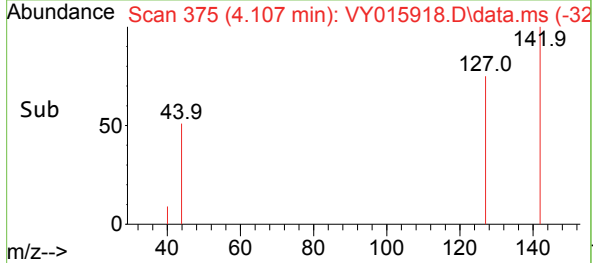
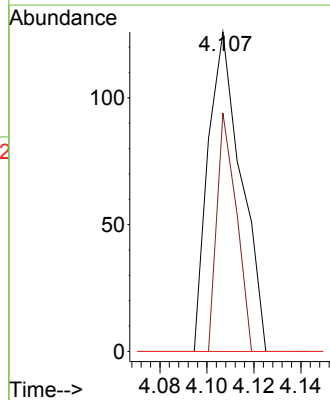
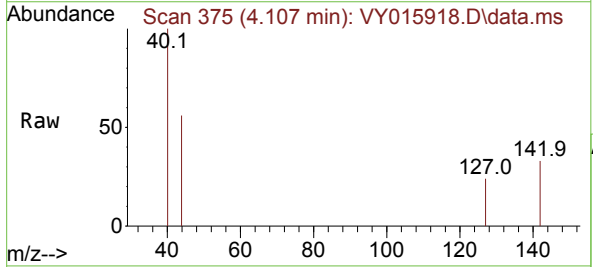


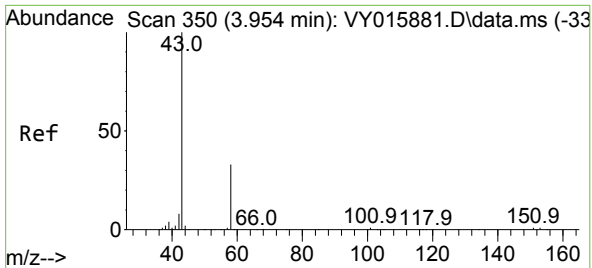
Tgt Ion:168 Resp: 153402
 Ion Ratio Lower Upper
 168 100
 99 55.8 43.4 65.0



#10
 Methyl Iodide
 Concen: 2.374 ug/l
 RT: 4.107 min Scan# 375
 Delta R.T. 0.013 min
 Lab File: VY015918.D
 Acq: 11 Oct 2023 13:00

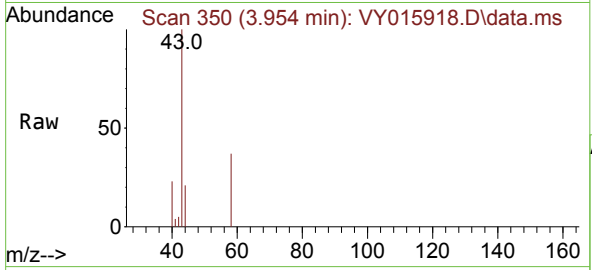
Tgt Ion:142 Resp: 123
 Ion Ratio Lower Upper
 142 100
 127 43.9 37.6 56.4
 141 0.0 11.8 17.8#



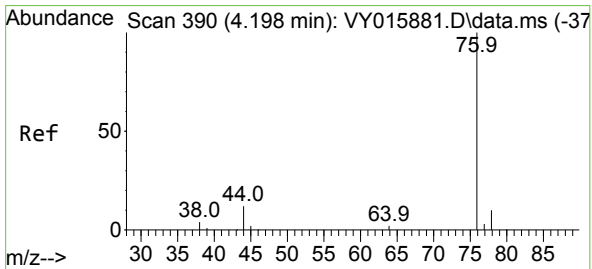
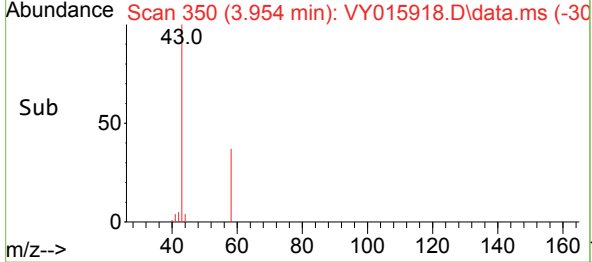
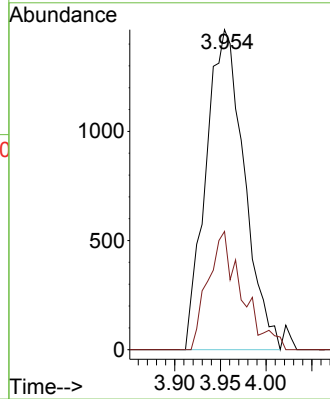


#16
 Acetone
 Concen: 12.213 ug/l
 RT: 3.954 min Scan# 31
 Delta R.T. 0.000 min
 Lab File: VY015918.D
 Acq: 11 Oct 2023 13:00

Instrument :
 MSVOA_Y
 ClientSampleId :

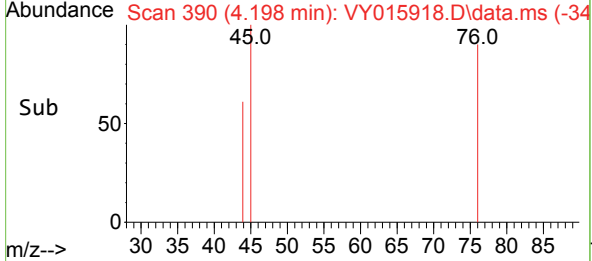
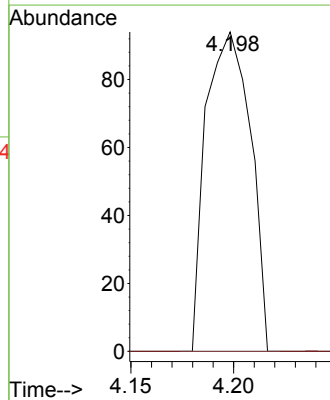
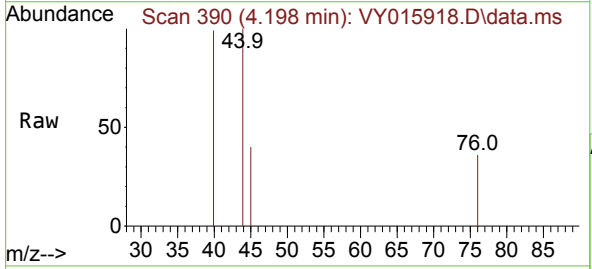


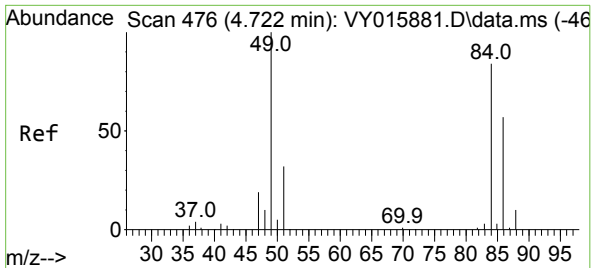
Tgt Ion: 43 Resp: 4268
 Ion Ratio Lower Upper
 43 100
 58 37.0 22.7 34.1#



#17
 Carbon Disulfide
 Concen: 2.828 ug/l
 RT: 4.198 min Scan# 390
 Delta R.T. 0.000 min
 Lab File: VY015918.D
 Acq: 11 Oct 2023 13:00

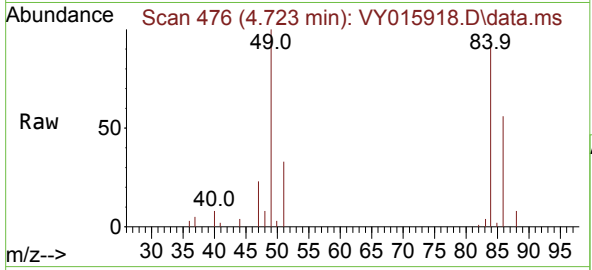
Tgt Ion: 76 Resp: 142
 Ion Ratio Lower Upper
 76 100
 78 0.0 7.0 10.4#



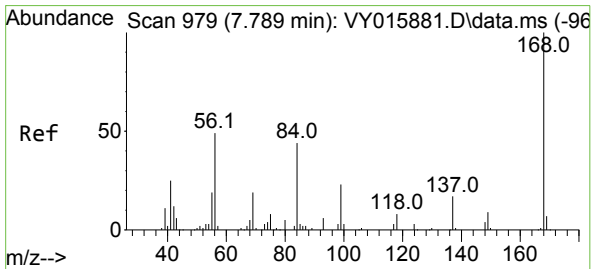
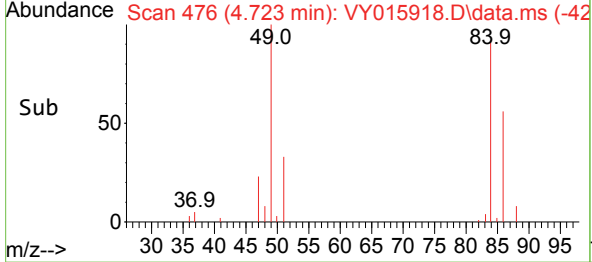
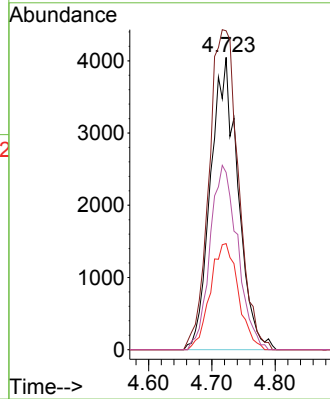


#20
Methylene Chloride
Concen: Below Cal
RT: 4.723 min Scan# 41
Delta R.T. 0.001 min
Lab File: VY015918.D
Acq: 11 Oct 2023 13:00

Instrument :
MSVOA_Y
ClientSampleId :

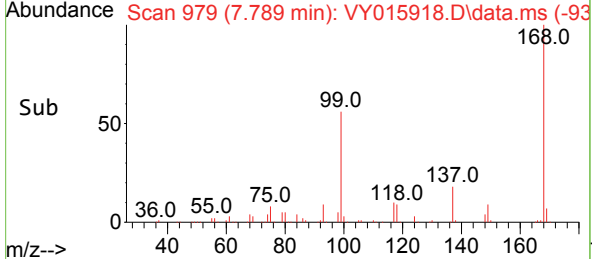
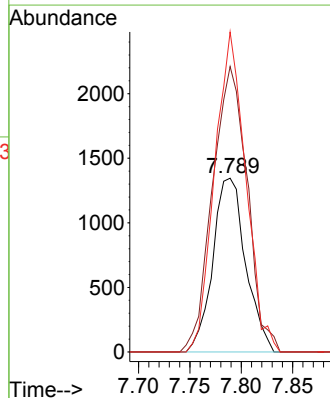
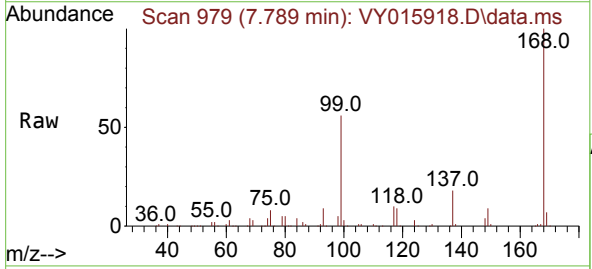


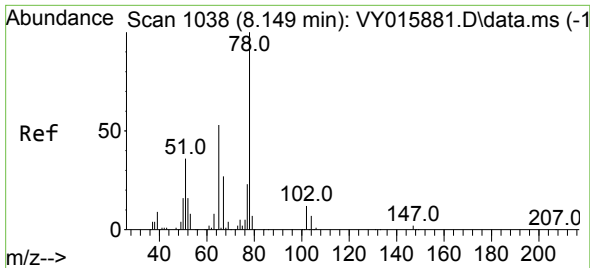
| Tgt Ion | Resp | Lower | Upper |
|---------|-------|-------|-------|
| 84 | 12161 | | |
| 84 | 100 | | |
| 49 | 109.1 | 106.9 | 160.3 |
| 51 | 36.3 | 33.2 | 49.8 |
| 86 | 60.6 | 51.0 | 76.6 |



#31
Cyclohexane
Concen: 2.021 ug/l
RT: 7.789 min Scan# 979
Delta R.T. 0.000 min
Lab File: VY015918.D
Acq: 11 Oct 2023 13:00

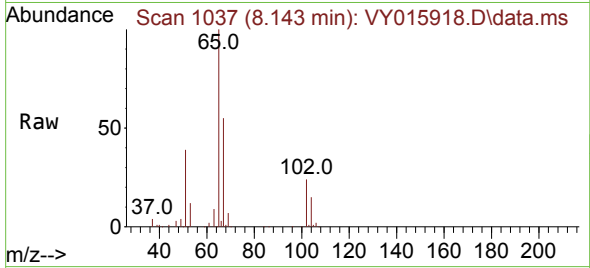
| Tgt Ion | Resp | Lower | Upper |
|---------|-------|-------|-------|
| 56 | 2987 | | |
| 56 | 100 | | |
| 69 | 164.3 | 27.8 | 41.6# |
| 84 | 184.1 | 66.4 | 99.6# |



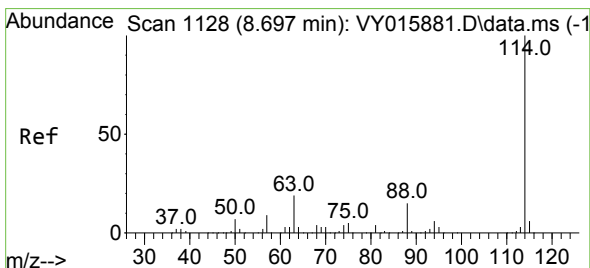
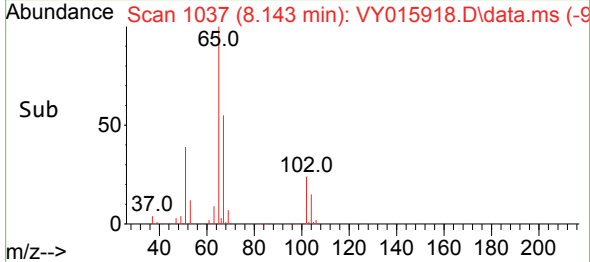
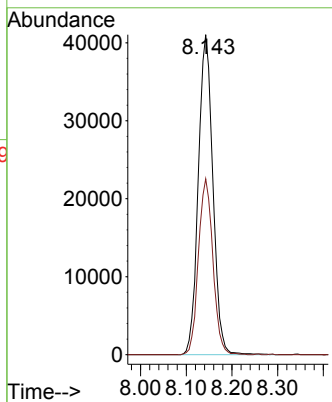


#33
 1,2-Dichloroethane-d4
 Concen: 65.668 ug/l
 RT: 8.143 min Scan# 1037
 Delta R.T. -0.006 min
 Lab File: VY015918.D
 Acq: 11 Oct 2023 13:00

Instrument : MSVOA_Y
 ClientSampleId :

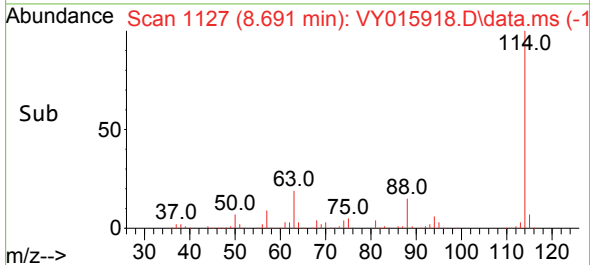
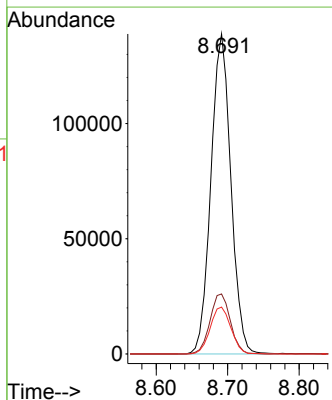
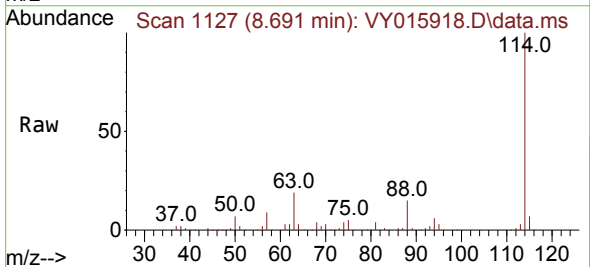


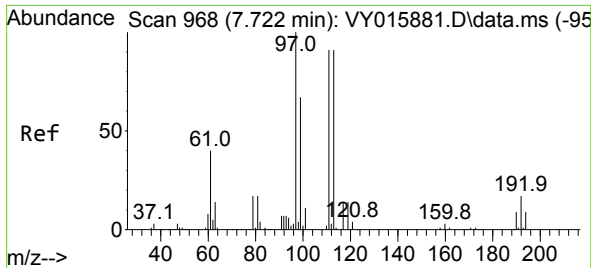
Tgt Ion: 65 Resp: 90642
 Ion Ratio Lower Upper
 65 100
 67 54.6 0.0 101.8



#34
 1,4-Difluorobenzene
 Concen: 50.000 ug/l
 RT: 8.691 min Scan# 1127
 Delta R.T. -0.006 min
 Lab File: VY015918.D
 Acq: 11 Oct 2023 13:00

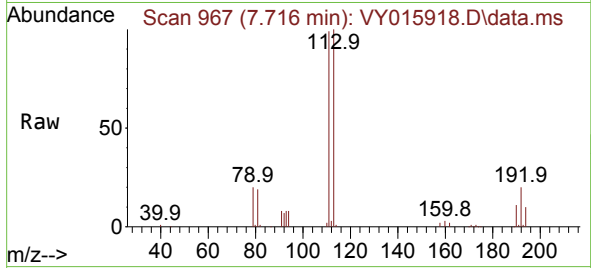
Tgt Ion: 114 Resp: 269032
 Ion Ratio Lower Upper
 114 100
 63 18.8 0.0 42.4
 88 14.7 0.0 30.6



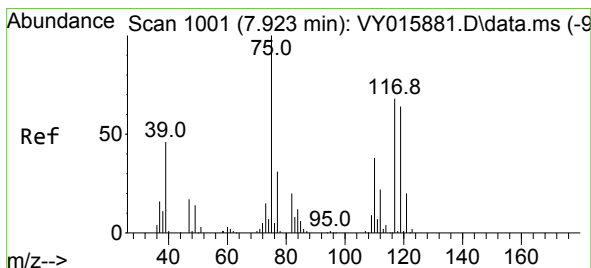
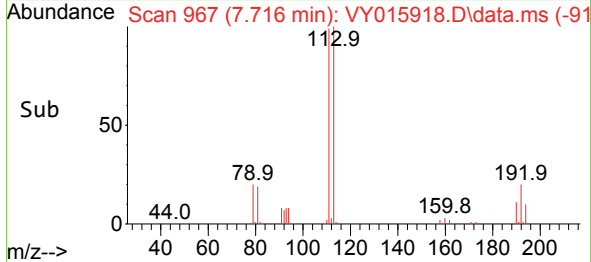
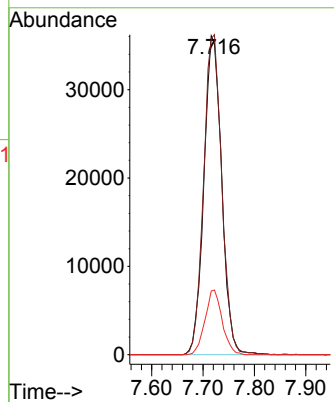


#35
 Dibromofluoromethane
 Concen: 57.810 ug/l
 RT: 7.716 min Scan# 901
 Delta R.T. -0.006 min
 Lab File: VY015918.D
 Acq: 11 Oct 2023 13:00

Instrument : MSVOA_Y
 ClientSampleId :

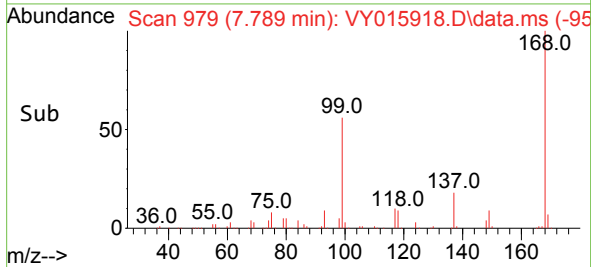
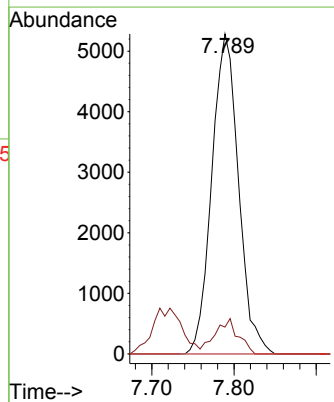
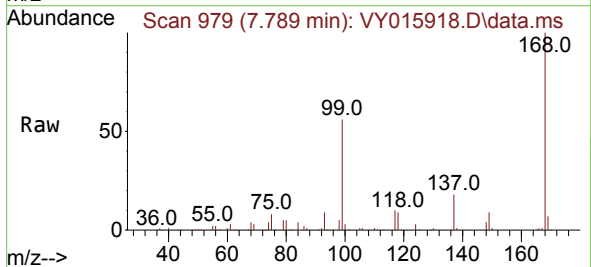


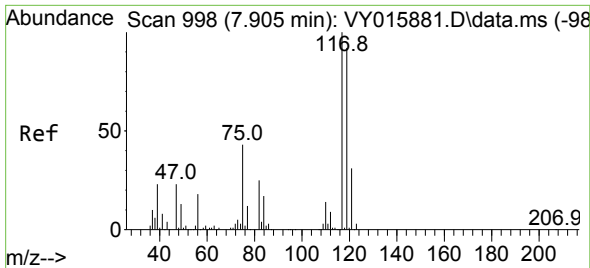
Tgt Ion:113 Resp: 86750
 Ion Ratio Lower Upper
 113 100
 111 102.2 81.3 121.9
 192 19.6 16.9 25.3



#36
 1,1-Dichloropropene
 Concen: 7.172 ug/l
 RT: 7.789 min Scan# 979
 Delta R.T. -0.134 min
 Lab File: VY015918.D
 Acq: 11 Oct 2023 13:00

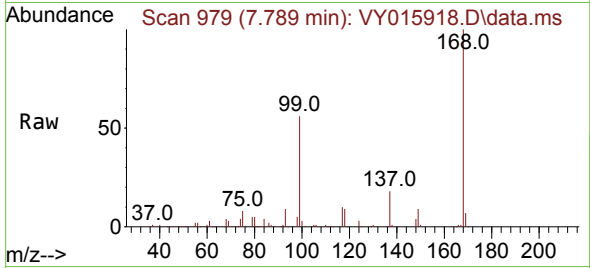
Tgt Ion: 75 Resp: 11920
 Ion Ratio Lower Upper
 75 100
 110 9.5 17.8 53.5#
 77 0.0 24.4 36.6#



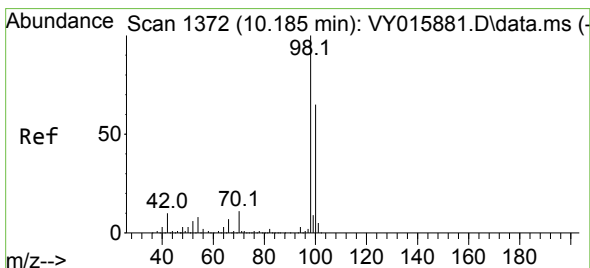
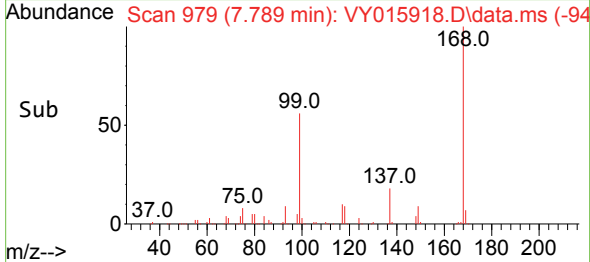
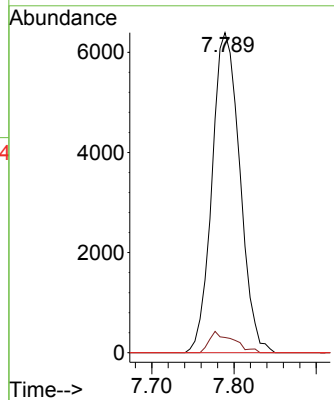


#38
 Carbon Tetrachloride
 Concen: 7.530 ug/l
 RT: 7.789 min Scan# 91
 Delta R.T. -0.116 min
 Lab File: VY015918.D
 Acq: 11 Oct 2023 13:00

Instrument : MSVOA_Y
 ClientSampleId :

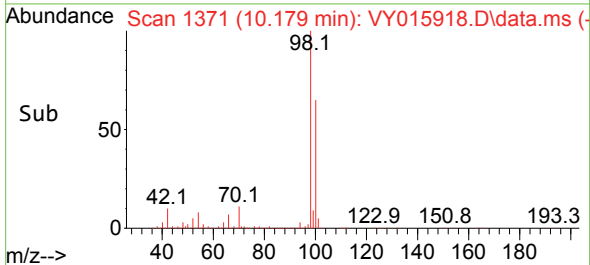
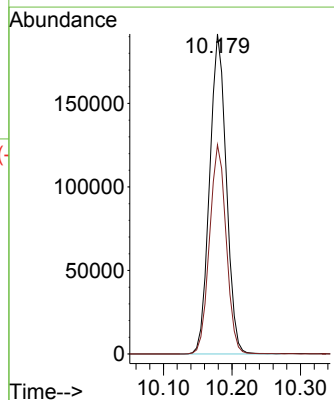
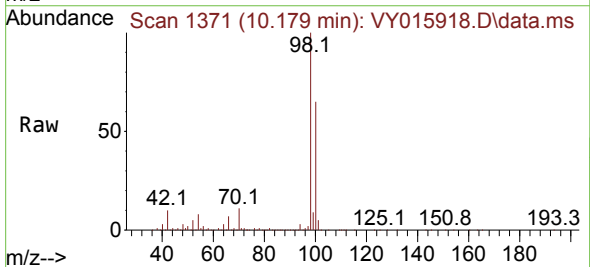


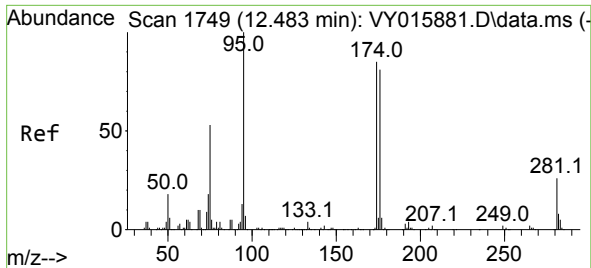
Tgt Ion: 117 Resp: 15030
 Ion Ratio Lower Upper
 117 100
 119 4.8 76.4 114.6#
 121 0.0 25.8 38.6#



#50
 Toluene-d8
 Concen: 65.606 ug/l
 RT: 10.179 min Scan# 1371
 Delta R.T. -0.006 min
 Lab File: VY015918.D
 Acq: 11 Oct 2023 13:00

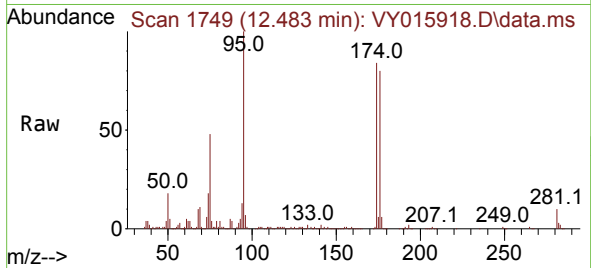
Tgt Ion: 98 Resp: 324455
 Ion Ratio Lower Upper
 98 100
 100 65.3 50.1 75.1



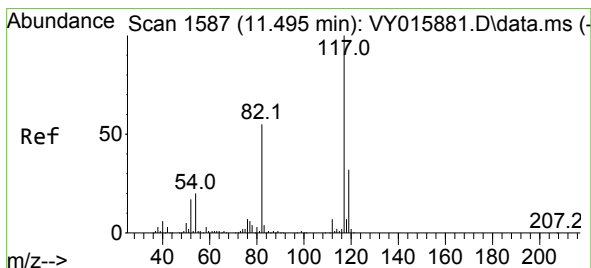
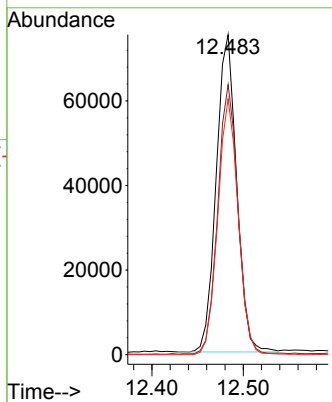
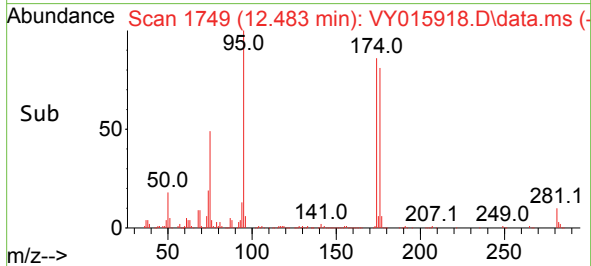


#62
 4-Bromofluorobenzene
 Concen: 57.791 ug/l
 RT: 12.483 min Scan# 1749
 Delta R.T. 0.000 min
 Lab File: VY015918.D
 Acq: 11 Oct 2023 13:00

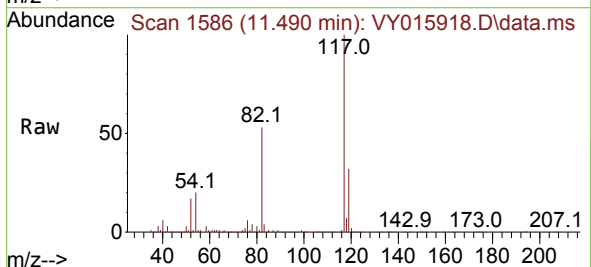
Instrument :
 MSVOA_Y
 ClientSampleId :



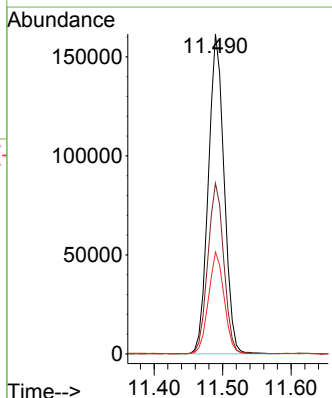
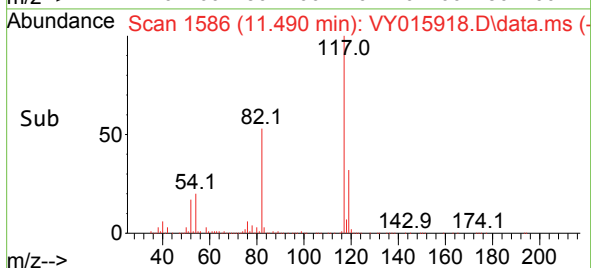
Tgt Ion: 95 Resp: 116087
 Ion Ratio Lower Upper
 95 100
 174 84.9 0.0 178.2
 176 80.5 0.0 173.8

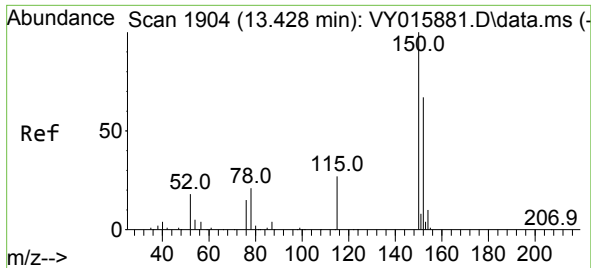


#63
 Chlorobenzene-d5
 Concen: 50.000 ug/l
 RT: 11.490 min Scan# 1586
 Delta R.T. -0.006 min
 Lab File: VY015918.D
 Acq: 11 Oct 2023 13:00



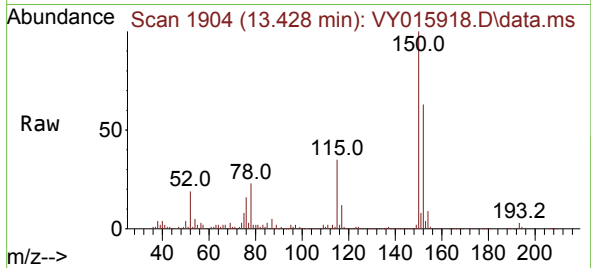
Tgt Ion: 117 Resp: 258338
 Ion Ratio Lower Upper
 117 100
 82 53.3 43.4 65.0
 119 31.8 26.3 39.5



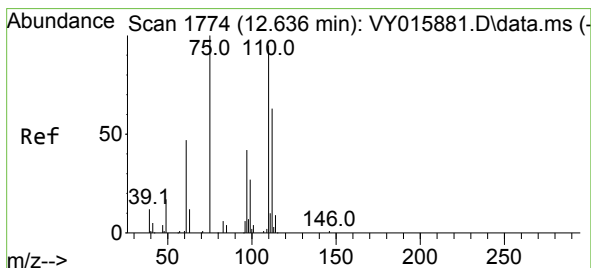
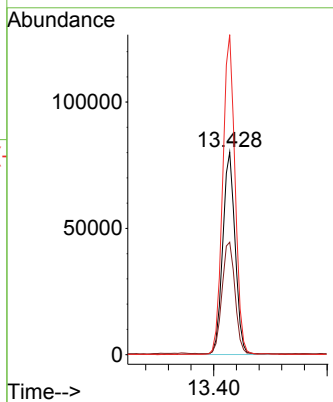
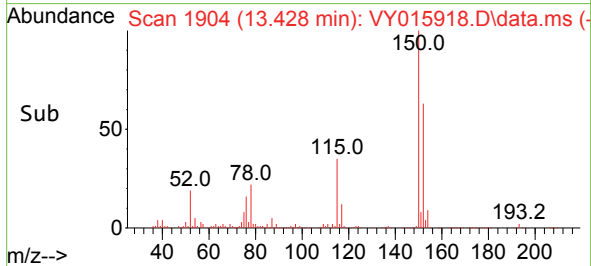


#72
 1,4-Dichlorobenzene-d4
 Concen: 50.000 ug/l
 RT: 13.428 min Scan# 1904
 Delta R.T. 0.000 min
 Lab File: VY015918.D
 Acq: 11 Oct 2023 13:00

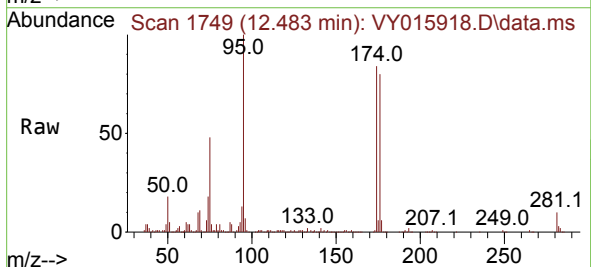
Instrument : MSVOA_Y
 ClientSampleId :



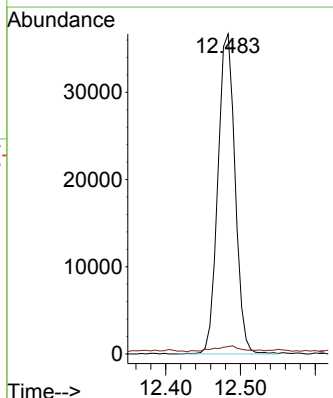
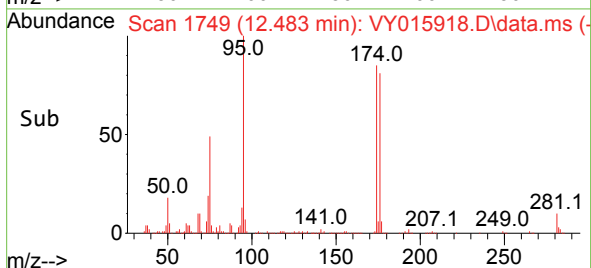
Tgt Ion:152 Resp: 121452
 Ion Ratio Lower Upper
 152 100
 115 57.6 28.8 86.5
 150 157.1 0.0 348.8

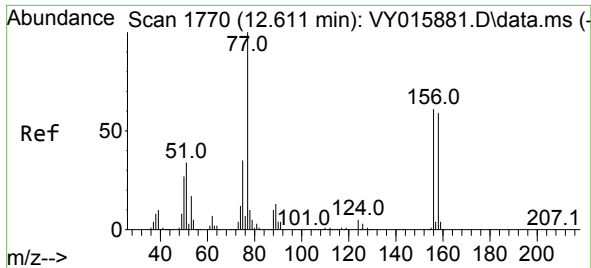


#76
 1,2,3-Trichloropropane
 Concen: 41.512 ug/l
 RT: 12.483 min Scan# 1749
 Delta R.T. -0.152 min
 Lab File: VY015918.D
 Acq: 11 Oct 2023 13:00



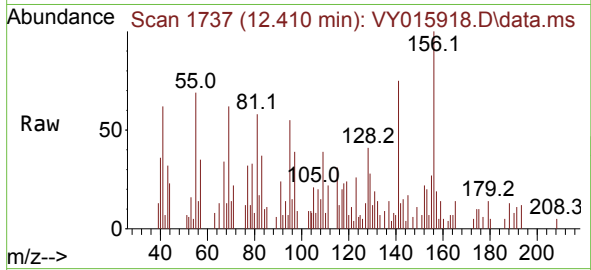
Tgt Ion: 75 Resp: 58856
 Ion Ratio Lower Upper
 75 100
 77 3.0 0.0 0.0#



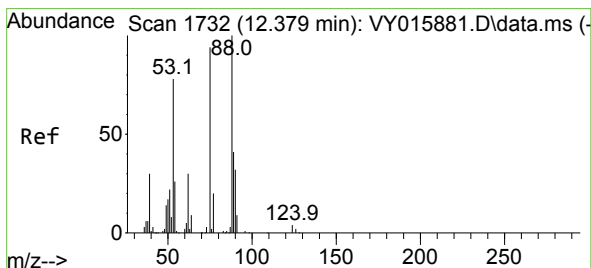
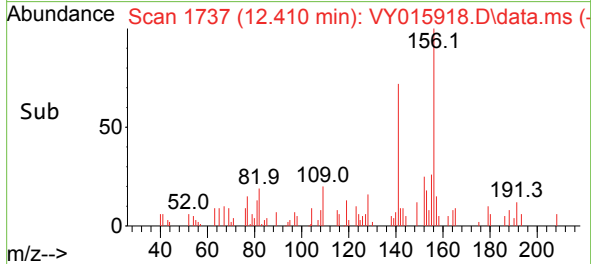
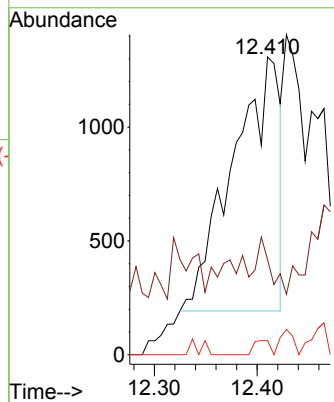


#77
 Bromobenzene
 Concen: 1.890 ug/l
 RT: 12.410 min Scan# 1749
 Delta R.T. -0.201 min
 Lab File: VY015918.D
 Acq: 11 Oct 2023 13:00

Instrument : MSVOA_Y
 ClientSampleId :

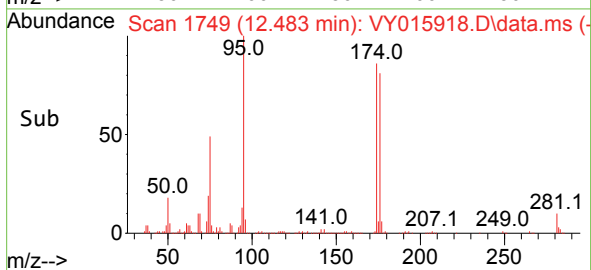
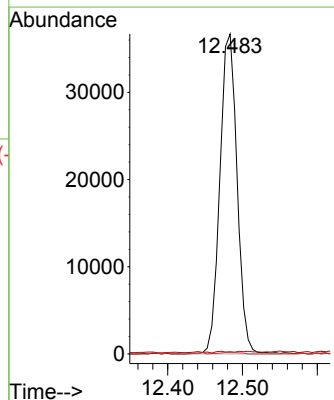
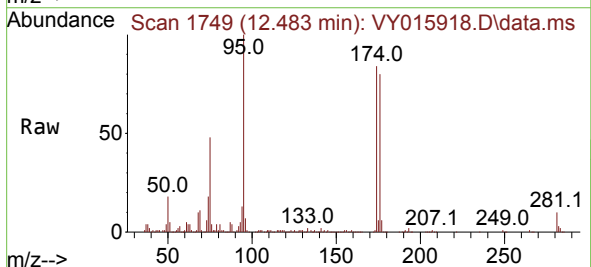


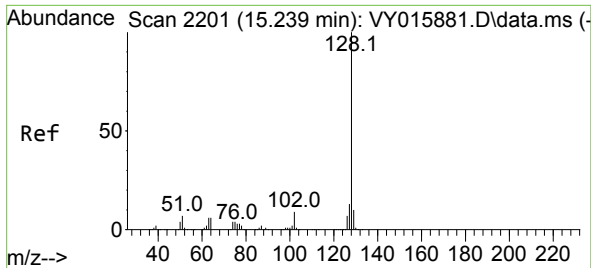
Tgt Ion:156 Resp: 3550
 Ion Ratio Lower Upper
 156 100
 77 6.7 92.8 278.6#
 158 1.9 48.4 145.3#



#81
 trans-1,4-Dichloro-2-butene
 Concen: 92.053 ug/l
 RT: 12.483 min Scan# 1749
 Delta R.T. 0.104 min
 Lab File: VY015918.D
 Acq: 11 Oct 2023 13:00

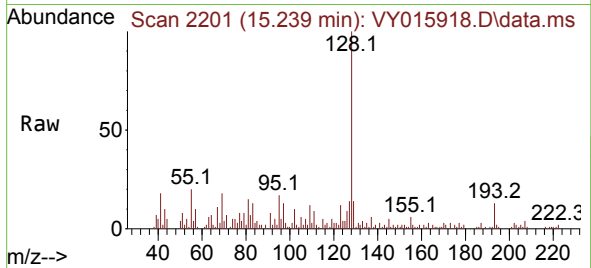
Tgt Ion: 75 Resp: 58856
 Ion Ratio Lower Upper
 75 100
 53 0.4 77.8 116.8#
 89 0.5 37.4 56.0#





#95
 Naphthalene
 Concen: 3.504 ug/l
 RT: 15.239 min Scan# 21
 Delta R.T. 0.000 min
 Lab File: VY015918.D
 Acq: 11 Oct 2023 13:00

Instrument :
 MSVOA_Y
 ClientSampleId :



Tgt Ion:128 Resp: 18265

| Ion | Ratio | Lower | Upper |
|-----|-------|-------|-------|
| 128 | 100 | | |
| 127 | 15.1 | 10.8 | 16.2 |
| 129 | 10.8 | 8.6 | 13.0 |

