

Data Path : Z:\voasrv\HPCHEM1\MSVOA\_Y\Data\VY101123\  
 Data File : VY015923.D  
 Acq On : 11 Oct 2023 14:58  
 Operator : SY/MD  
 Sample : 04800-01RE  
 Misc : 5.06g/5.0mL/MSVOA\_Y/SOIL  
 ALS Vial : 14 Sample Multiplier: 1

Instrument :  
 MSVOA\_Y  
 ClientSampleId :

Quant Time: Oct 12 01:57:15 2023  
 Quant Method : Z:\voasrv\HPCHEM1\MSVOA\_Y\methods\82Y100923S.M  
 Quant Title : SW846 8260  
 QLast Update : Tue Oct 10 07:06:18 2023  
 Response via : Initial Calibration

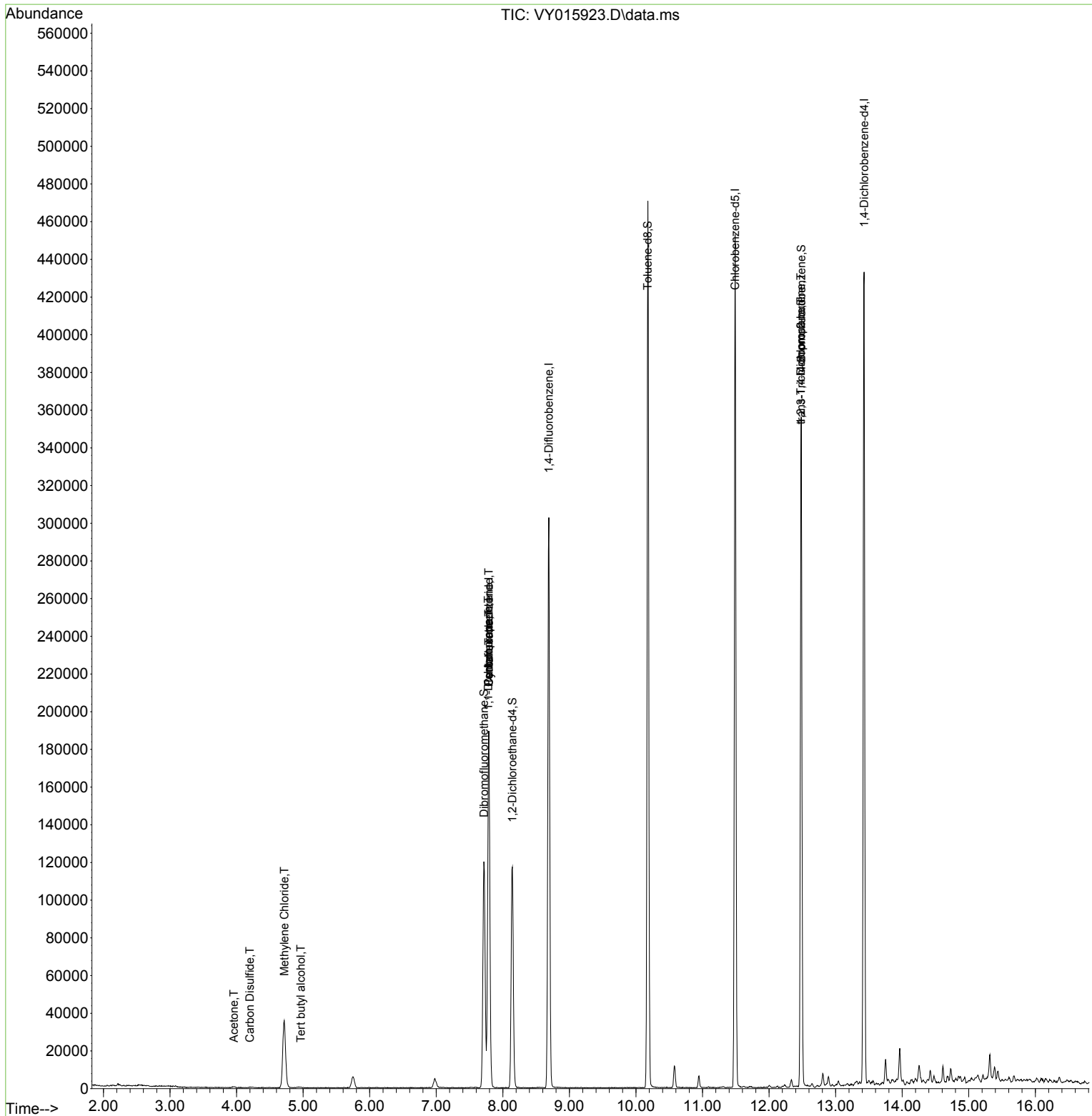
Compound	R.T.	QIon	Response	Conc	Units	Dev(Min)
-----						
Internal Standards						
1) Pentafluorobenzene	7.789	168	148668	50.000	ug/l	0.00
34) 1,4-Difluorobenzene	8.691	114	262515	50.000	ug/l	0.00
63) Chlorobenzene-d5	11.489	117	245189	50.000	ug/l	0.00
72) 1,4-Dichlorobenzene-d4	13.428	152	115453	50.000	ug/l	0.00
System Monitoring Compounds						
33) 1,2-Dichloroethane-d4	8.142	65	93442	69.852	ug/l	0.00
Spiked Amount	50.000	Range	50 - 163	Recovery	=	139.700%
35) Dibromofluoromethane	7.716	113	85948	58.698	ug/l	0.00
Spiked Amount	50.000	Range	54 - 147	Recovery	=	117.400%
50) Toluene-d8	10.179	98	308583	63.945	ug/l	0.00
Spiked Amount	50.000	Range	58 - 134	Recovery	=	127.900%
62) 4-Bromofluorobenzene	12.483	95	106554	54.362	ug/l	0.00
Spiked Amount	50.000	Range	30 - 143	Recovery	=	108.720%
Target Compounds						
					Qvalue	
11) Tert butyl alcohol	4.966	59	238	11.459	ug/l #	89
16) Acetone	3.960	43	956	7.591	ug/l #	46
17) Carbon Disulfide	4.198	76	42	2.758	ug/l #	76
20) Methylene Chloride	4.716	84	27388	12.641	ug/l #	84
31) Cyclohexane	7.789	56	3074	2.146	ug/l #	1
36) 1,1-Dichloropropene	7.783	75	11012	6.790	ug/l #	50
38) Carbon Tetrachloride	7.789	117	14621	7.507	ug/l #	16
76) 1,2,3-Trichloropropane	12.477	75	54635	40.537	ug/l #	100
81) trans-1,4-Dichloro-2-b...	12.477	75	54635	89.891	ug/l #	10
-----						

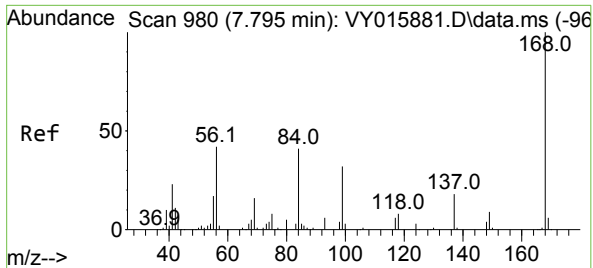
(#) = qualifier out of range (m) = manual integration (+) = signals summed

Data Path : Z:\voasrv\HPCHEM1\MSVOA\_Y\Data\VY101123\  
 Data File : VY015923.D  
 Acq On : 11 Oct 2023 14:58  
 Operator : SY/MD  
 Sample : 04800-01RE  
 Misc : 5.06g/5.0mL/MSVOA\_Y/SOIL  
 ALS Vial : 14 Sample Multiplier: 1

Instrument :  
 MSVOA\_Y  
 ClientSampleId :

Quant Time: Oct 12 01:57:15 2023  
 Quant Method : Z:\voasrv\HPCHEM1\MSVOA\_Y\methods\82Y100923S.M  
 Quant Title : SW846 8260  
 QLast Update : Tue Oct 10 07:06:18 2023  
 Response via : Initial Calibration

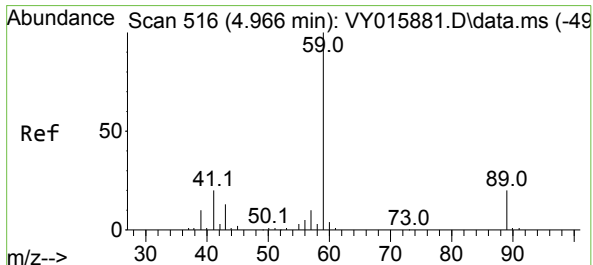
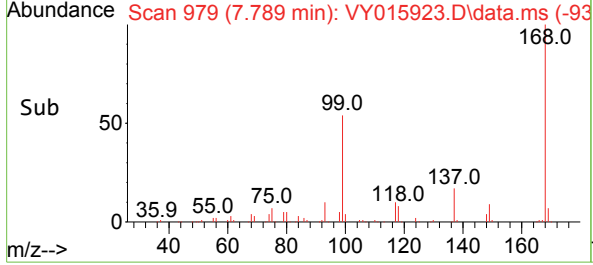
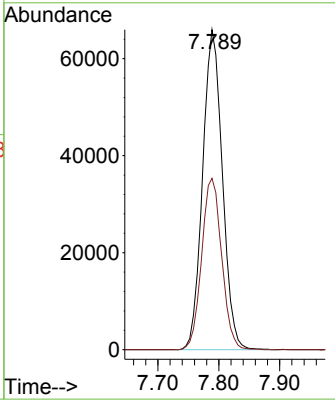
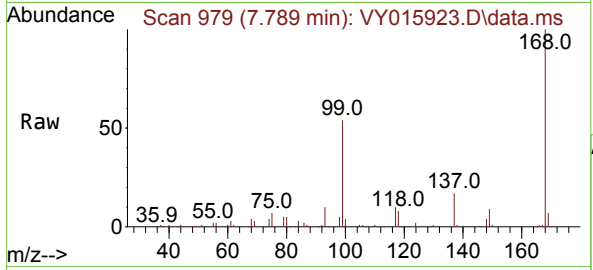




#1  
 Pentafluorobenzene  
 Concen: 50.000 ug/l  
 RT: 7.789 min Scan# 91  
 Delta R.T. -0.006 min  
 Lab File: VY015923.D  
 Acq: 11 Oct 2023 14:58

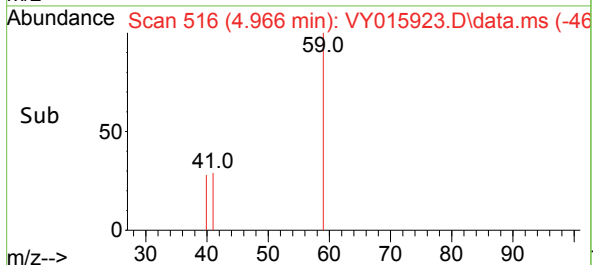
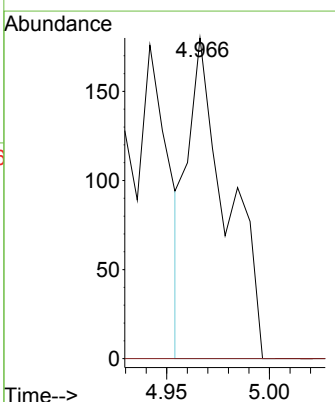
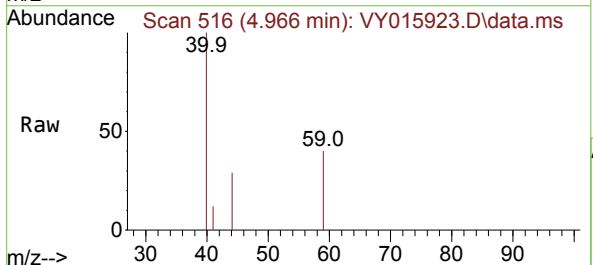
Instrument : MSVOA\_Y  
 ClientSampleId :

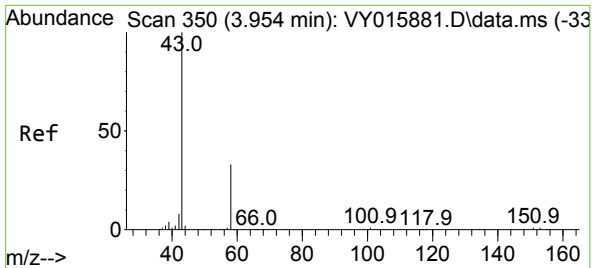
Tgt Ion:168 Resp: 148668  
 Ion Ratio Lower Upper  
 168 100  
 99 53.5 43.4 65.0



#11  
 Tert butyl alcohol  
 Concen: 11.459 ug/l  
 RT: 4.966 min Scan# 516  
 Delta R.T. 0.000 min  
 Lab File: VY015923.D  
 Acq: 11 Oct 2023 14:58

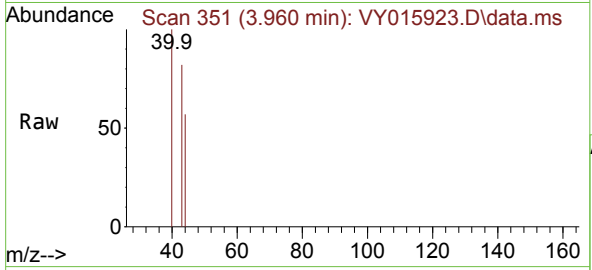
Tgt Ion: 59 Resp: 238  
 Ion Ratio Lower Upper  
 59 100  
 57 0.0 3.0 4.4#



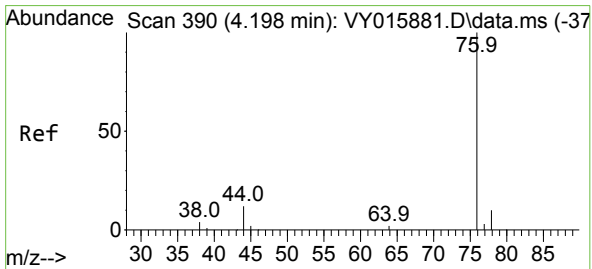
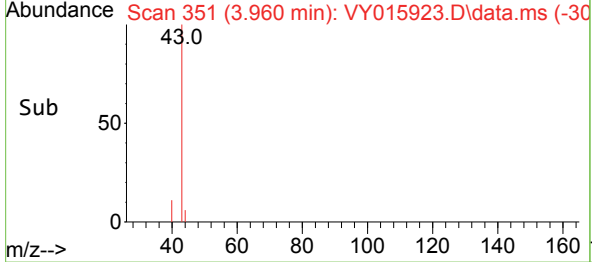
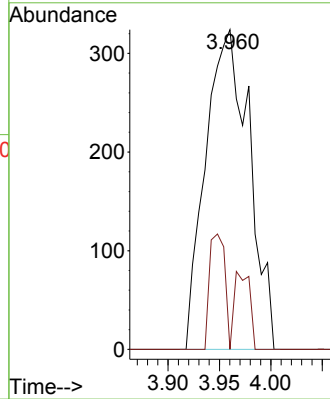


#16  
 Acetone  
 Concen: 7.591 ug/l  
 RT: 3.960 min Scan# 31  
 Delta R.T. 0.006 min  
 Lab File: VY015923.D  
 Acq: 11 Oct 2023 14:58

Instrument :  
 MSVOA\_Y  
 ClientSampleId :

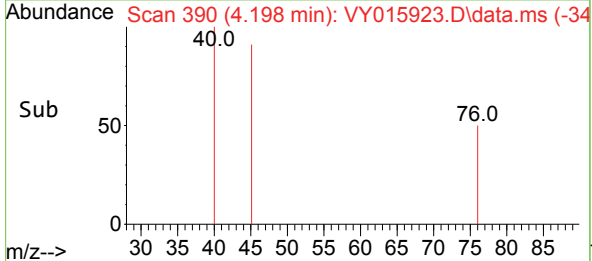
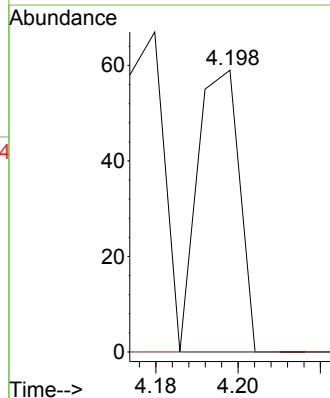
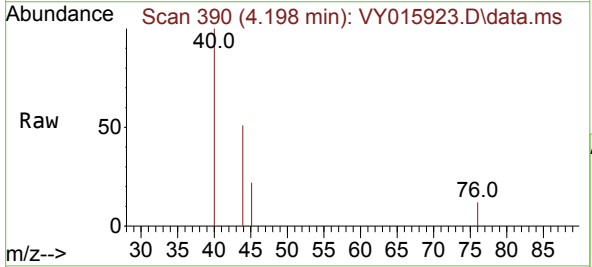


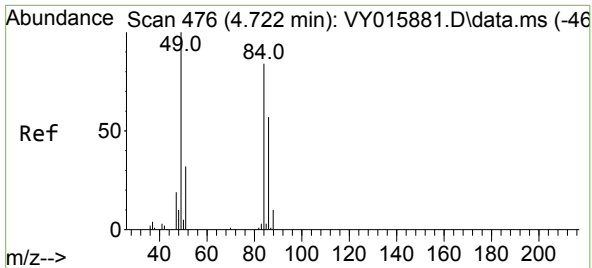
Tgt Ion: 43 Resp: 956  
 Ion Ratio Lower Upper  
 43 100  
 58 0.0 22.7 34.1#



#17  
 Carbon Disulfide  
 Concen: 2.758 ug/l  
 RT: 4.198 min Scan# 390  
 Delta R.T. 0.000 min  
 Lab File: VY015923.D  
 Acq: 11 Oct 2023 14:58

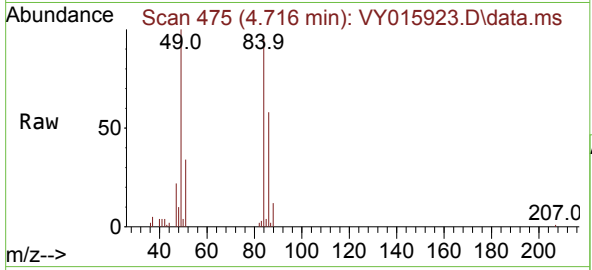
Tgt Ion: 76 Resp: 42  
 Ion Ratio Lower Upper  
 76 100  
 78 0.0 7.0 10.4#





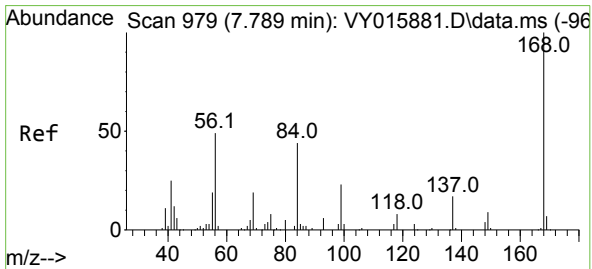
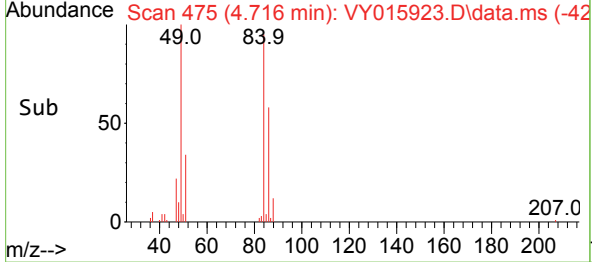
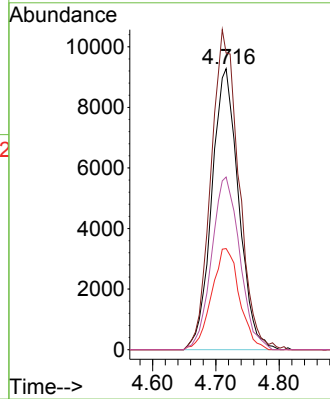
#20  
 Methylene Chloride  
 Concen: 12.641 ug/l  
 RT: 4.716 min Scan# 41  
 Delta R.T. -0.006 min  
 Lab File: VY015923.D  
 Acq: 11 Oct 2023 14:58

Instrument :  
 MSVOA\_Y  
 ClientSampleId :



Tgt Ion: 84 Resp: 27388

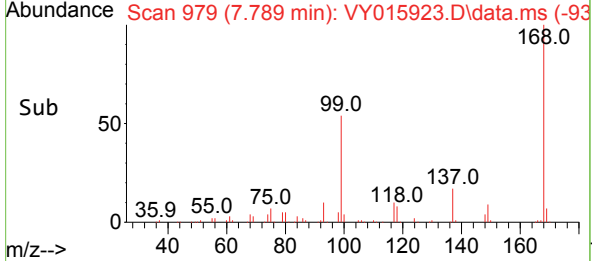
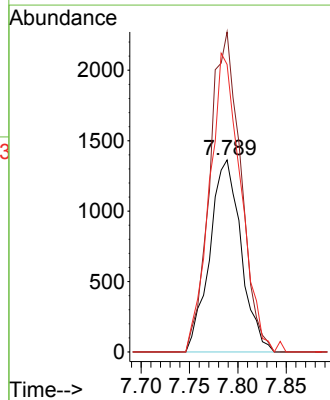
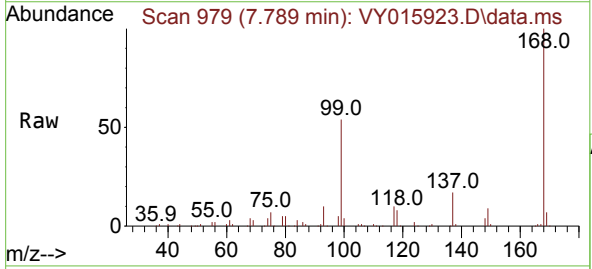
Ion	Ratio	Lower	Upper
84	100		
49	105.6	106.9	160.3#
51	36.0	33.2	49.8
86	61.5	51.0	76.6

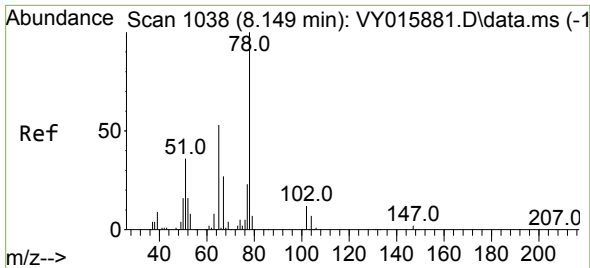


#31  
 Cyclohexane  
 Concen: 2.146 ug/l  
 RT: 7.789 min Scan# 979  
 Delta R.T. 0.000 min  
 Lab File: VY015923.D  
 Acq: 11 Oct 2023 14:58

Tgt Ion: 56 Resp: 3074

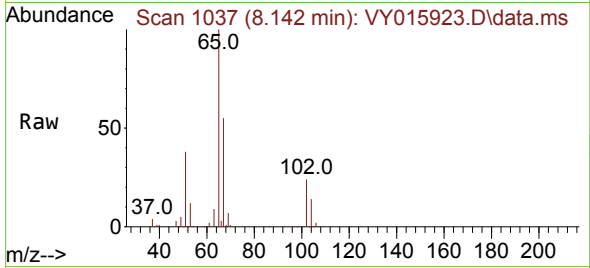
Ion	Ratio	Lower	Upper
56	100		
69	166.7	27.8	41.6#
84	149.7	66.4	99.6#



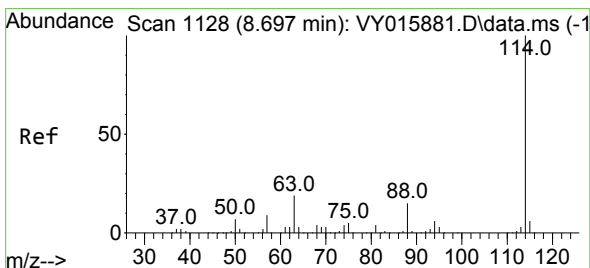
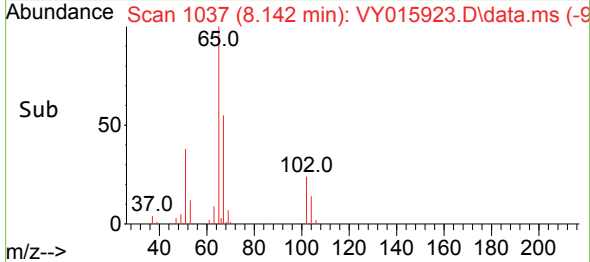
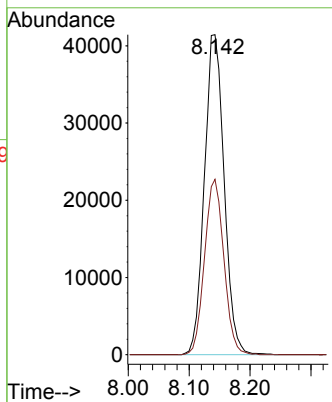


#33  
 1,2-Dichloroethane-d4  
 Concen: 69.852 ug/l  
 RT: 8.142 min Scan# 1037  
 Delta R.T. -0.006 min  
 Lab File: VY015923.D  
 Acq: 11 Oct 2023 14:58

Instrument :  
 MSVOA\_Y  
 ClientSampleId :

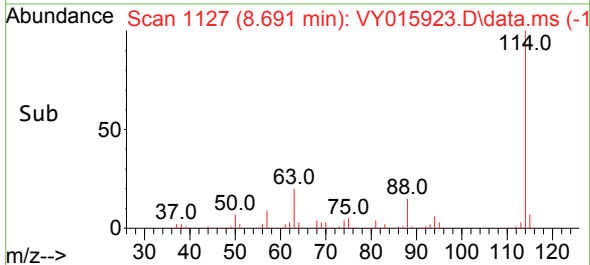
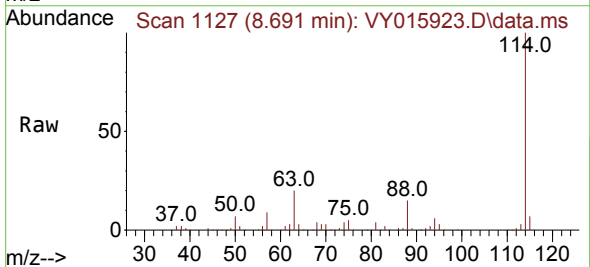
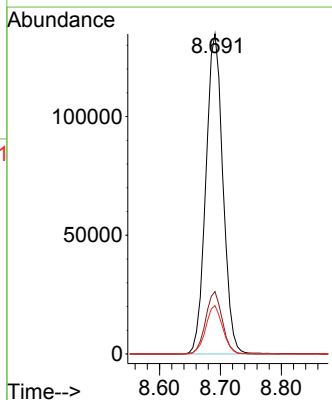


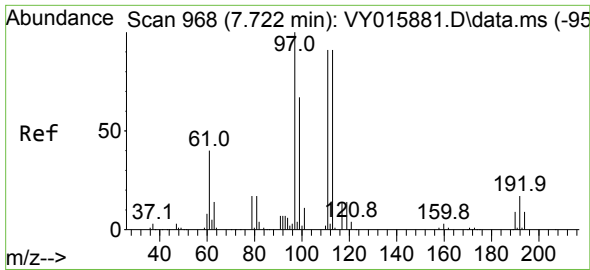
Tgt Ion: 65 Resp: 93442  
 Ion Ratio Lower Upper  
 65 100  
 67 53.6 0.0 101.8



#34  
 1,4-Difluorobenzene  
 Concen: 50.000 ug/l  
 RT: 8.691 min Scan# 1127  
 Delta R.T. -0.006 min  
 Lab File: VY015923.D  
 Acq: 11 Oct 2023 14:58

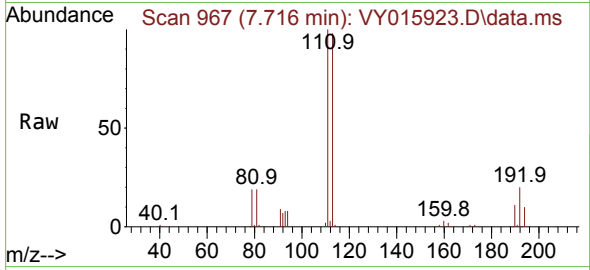
Tgt Ion: 114 Resp: 262515  
 Ion Ratio Lower Upper  
 114 100  
 63 19.5 0.0 42.4  
 88 15.1 0.0 30.6



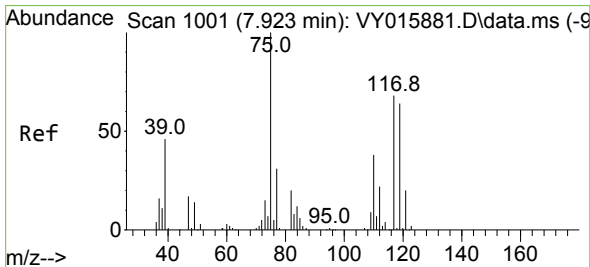
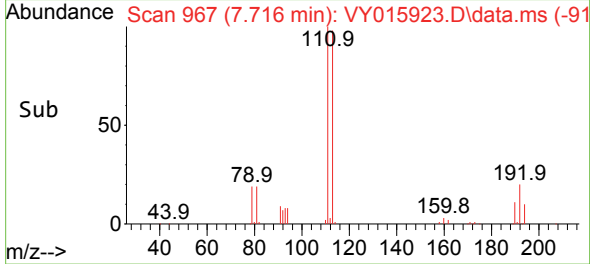
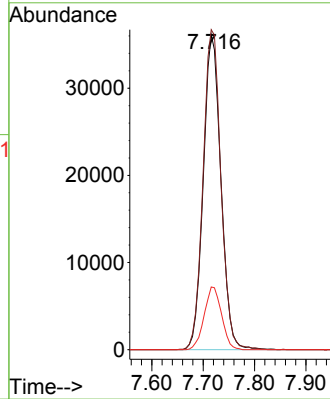


#35  
 Dibromofluoromethane  
 Concen: 58.698 ug/l  
 RT: 7.716 min Scan# 90  
 Delta R.T. -0.006 min  
 Lab File: VY015923.D  
 Acq: 11 Oct 2023 14:58

Instrument :  
 MSVOA\_Y  
 ClientSampleId :

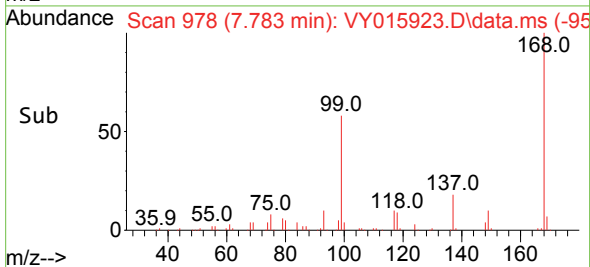
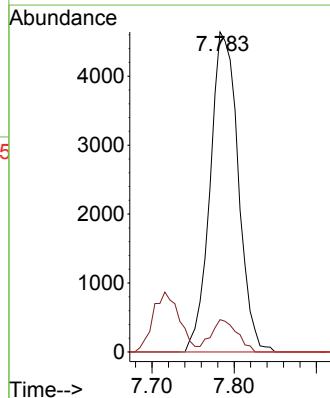
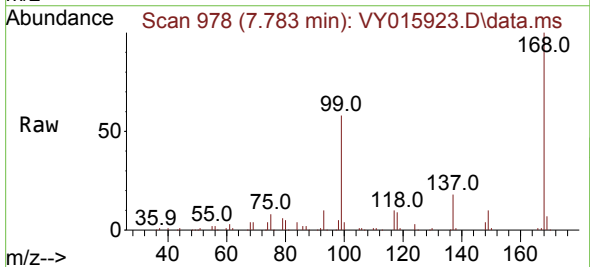


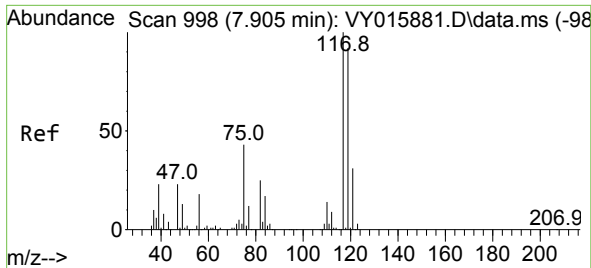
Tgt Ion:113 Resp: 85948  
 Ion Ratio Lower Upper  
 113 100  
 111 103.1 81.3 121.9  
 192 19.7 16.9 25.3



#36  
 1,1-Dichloropropene  
 Concen: 6.790 ug/l  
 RT: 7.783 min Scan# 978  
 Delta R.T. -0.140 min  
 Lab File: VY015923.D  
 Acq: 11 Oct 2023 14:58

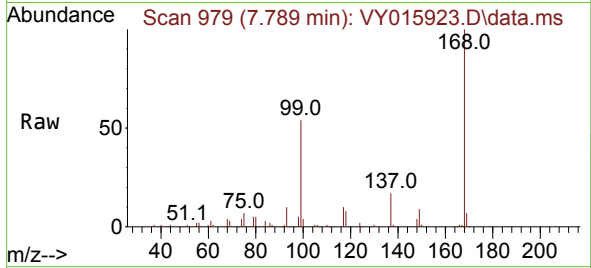
Tgt Ion: 75 Resp: 11012  
 Ion Ratio Lower Upper  
 75 100  
 110 9.3 17.8 53.5#  
 77 0.0 24.4 36.6#



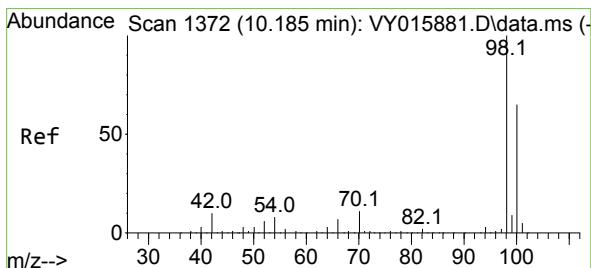
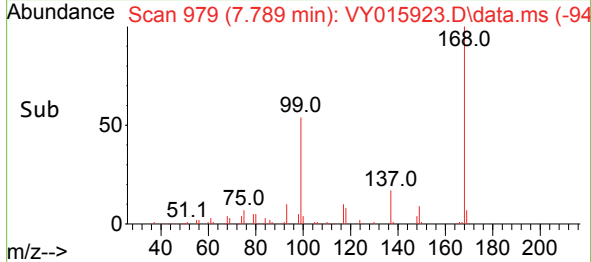
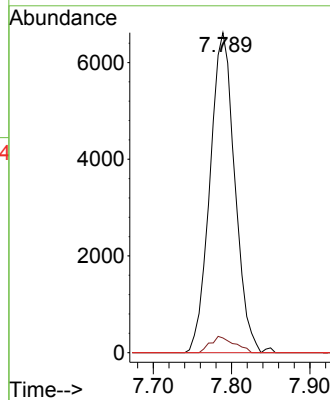


#38  
 Carbon Tetrachloride  
 Concen: 7.507 ug/l  
 RT: 7.789 min Scan# 91  
 Delta R.T. -0.116 min  
 Lab File: VY015923.D  
 Acq: 11 Oct 2023 14:58

Instrument :  
 MSVOA\_Y  
 ClientSampleId :

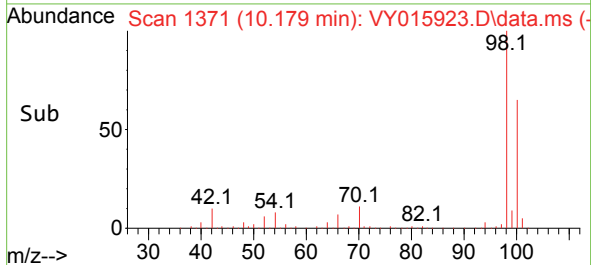
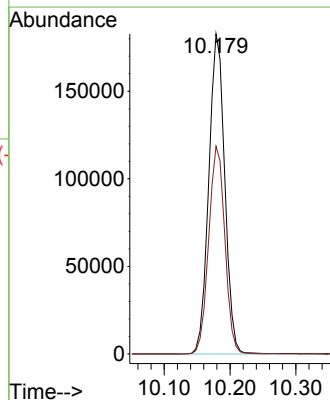
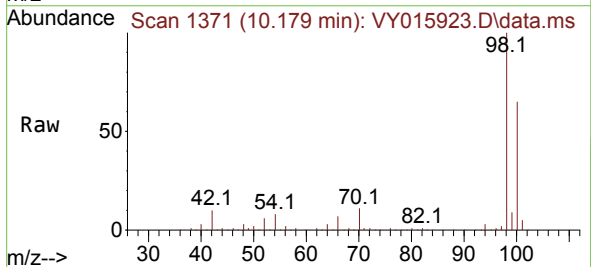


Tgt Ion:117 Resp: 14621  
 Ion Ratio Lower Upper  
 117 100  
 119 4.6 76.4 114.6#  
 121 0.0 25.8 38.6#

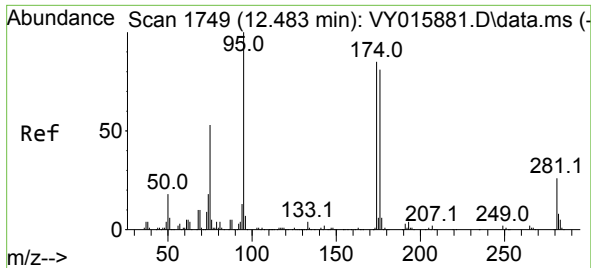


#50  
 Toluene-d8  
 Concen: 63.945 ug/l  
 RT: 10.179 min Scan# 1371  
 Delta R.T. -0.006 min  
 Lab File: VY015923.D  
 Acq: 11 Oct 2023 14:58

Tgt Ion: 98 Resp: 308583  
 Ion Ratio Lower Upper  
 98 100  
 100 65.6 50.1 75.1

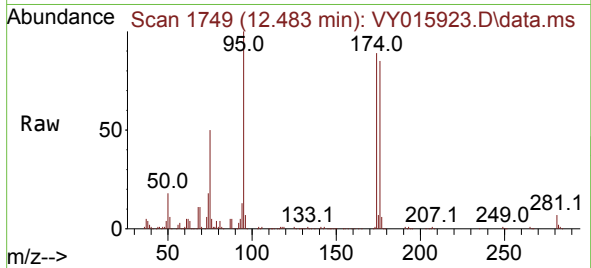




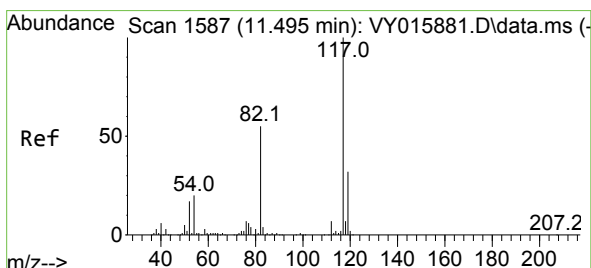
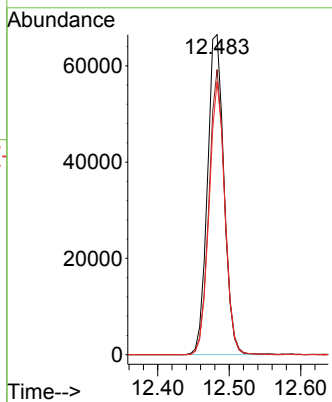
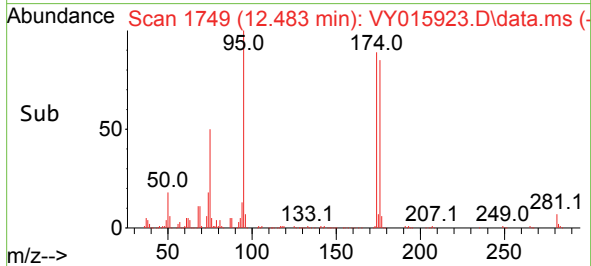


#62  
 4-Bromofluorobenzene  
 Concen: 54.362 ug/l  
 RT: 12.483 min Scan# 11  
 Delta R.T. 0.000 min  
 Lab File: VY015923.D  
 Acq: 11 Oct 2023 14:58

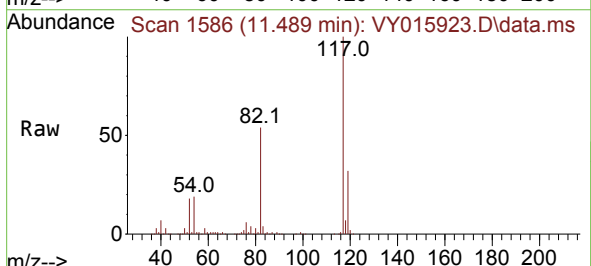
Instrument :  
 MSVOA\_Y  
 ClientSampleId :



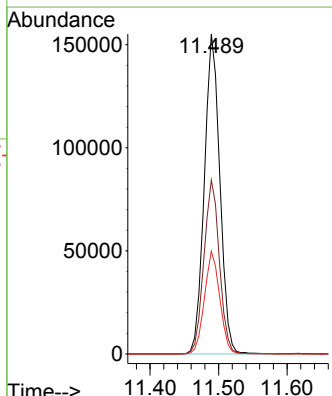
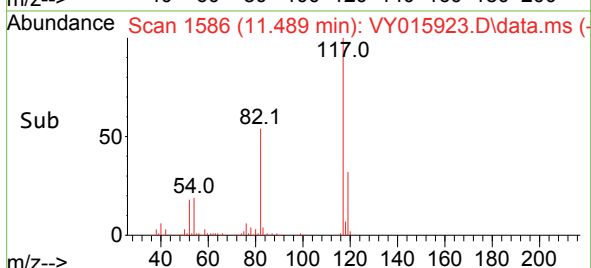
Tgt Ion: 95 Resp: 106554  
 Ion Ratio Lower Upper  
 95 100  
 174 85.1 0.0 178.2  
 176 81.3 0.0 173.8

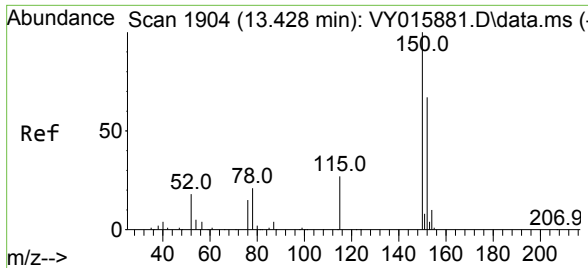


#63  
 Chlorobenzene-d5  
 Concen: 50.000 ug/l  
 RT: 11.489 min Scan# 1586  
 Delta R.T. -0.006 min  
 Lab File: VY015923.D  
 Acq: 11 Oct 2023 14:58



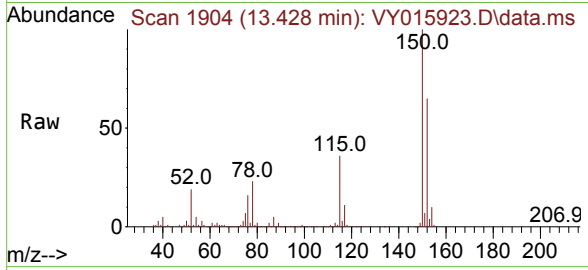
Tgt Ion: 117 Resp: 245189  
 Ion Ratio Lower Upper  
 117 100  
 82 54.3 43.4 65.0  
 119 32.1 26.3 39.5



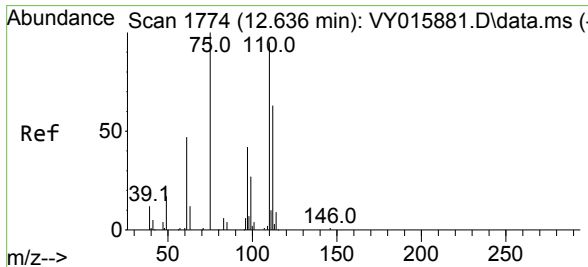
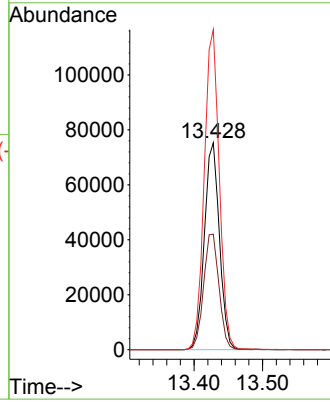
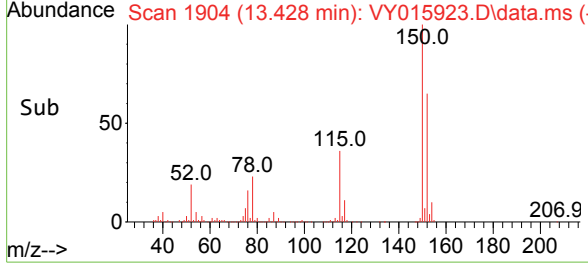


#72  
 1,4-Dichlorobenzene-d4  
 Concen: 50.000 ug/l  
 RT: 13.428 min Scan# 1904  
 Delta R.T. 0.000 min  
 Lab File: VY015923.D  
 Acq: 11 Oct 2023 14:58

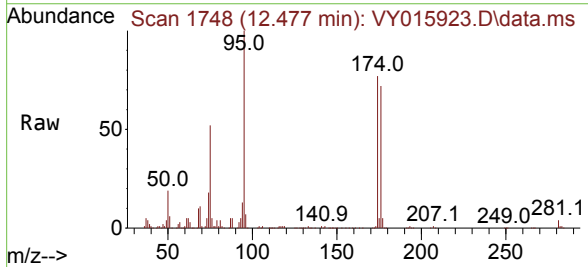
Instrument : MSVOA\_Y  
 ClientSampleId :



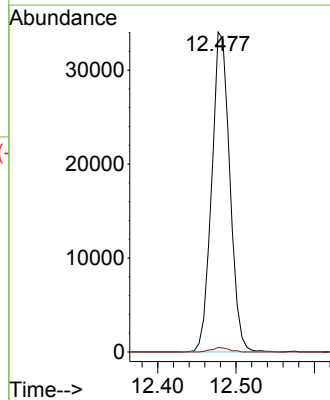
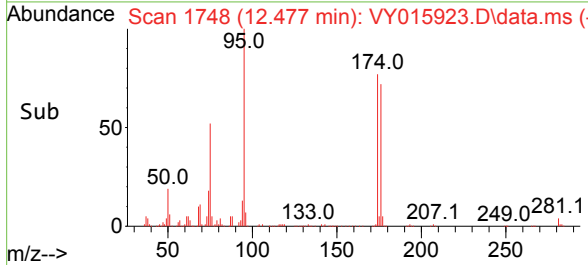
Tgt Ion:152 Resp: 115453  
 Ion Ratio Lower Upper  
 152 100  
 115 57.1 28.8 86.5  
 150 154.5 0.0 348.8

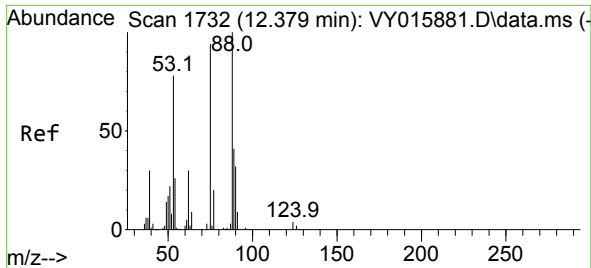


#76  
 1,2,3-Trichloropropane  
 Concen: 40.537 ug/l  
 RT: 12.477 min Scan# 1748  
 Delta R.T. -0.159 min  
 Lab File: VY015923.D  
 Acq: 11 Oct 2023 14:58



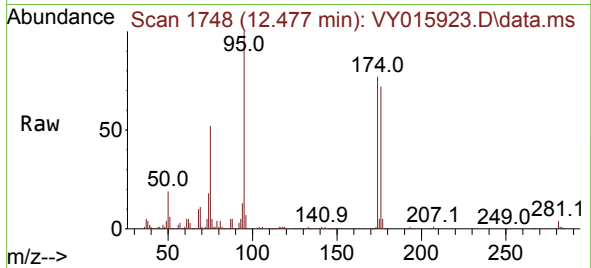
Tgt Ion: 75 Resp: 54635  
 Ion Ratio Lower Upper  
 75 100  
 77 1.3 0.0 0.0#





#81  
 trans-1,4-Dichloro-2-butene  
 Concen: 89.891 ug/l  
 RT: 12.477 min Scan# 11  
 Delta R.T. 0.098 min  
 Lab File: VY015923.D  
 Acq: 11 Oct 2023 14:58

Instrument :  
 MSVOA\_Y  
 ClientSampleId :



Tgt Ion: 75 Resp: 54635  
 Ion Ratio Lower Upper  
 75 100  
 53 0.0 77.8 116.8#  
 89 0.0 37.4 56.0#

