

Data Path : Z:\voasrv\HPCHEM1\MSVOA_Y\Data\VY101323\
 Data File : VY015955.D
 Acq On : 13 Oct 2023 14:21
 Operator : SY/MD
 Sample : 04878-03
 Misc : 5.05g/5.0mL/MSVOA_Y/SOIL
 ALS Vial : 10 Sample Multiplier: 1

Instrument :
 MSVOA_Y
 ClientSampleId :
 222

Integration Parameters: RTEINT.P
 Integrator: RTE
 Smoothing : ON
 Sampling : 1
 Start Thrs : 0.2
 Stop Thrs : 0
 Filtering: 5
 Min Area: 3 % of largest Peak
 Max Peaks: 100
 Peak Location: TOP

If leading or trailing edge < 100 prefer < Baseline drop else tangent >
 Peak separation: 5

Method : Z:\voasrv\HPCHEM1\MSVOA_Y\methods\82Y101223S.M
 Title : SW846 8260

Signal : TIC: VY015955.D\data.ms

peak #	R.T. min	first scan	max scan	last scan	PK TY	peak height	corr. area	corr. % max.	% of total
1	1.863	4	7	14	rVB3	5493	8942	1.26%	0.160%
2	2.216	60	65	75	rVB3	13454	24610	3.46%	0.440%
3	3.978	347	354	366	rBV2	4657	16423	2.31%	0.294%
4	4.710	460	474	487	rBV3	17835	56636	7.97%	1.013%
5	5.740	632	643	652	rBV3	6549	19232	2.71%	0.344%
6	7.008	841	851	862	rBV3	3359	11039	1.55%	0.197%
7	7.715	957	967	973	rBV	109373	261749	36.83%	4.681%
8	7.789	973	979	991	rVB	179424	394140	55.45%	7.048%
9	8.142	1028	1037	1050	rBV	115166	254606	35.82%	4.553%
10	8.685	1116	1126	1141	rBV	263870	529468	74.49%	9.468%
11	10.178	1363	1371	1386	rBV	421038	710778	100.00%	12.710%
12	10.581	1430	1437	1444	rBV2	18418	34245	4.82%	0.612%
13	11.489	1579	1586	1598	rBV	389738	628404	88.41%	11.237%
14	12.337	1720	1725	1730	rVB2	6402	10454	1.47%	0.187%
15	12.483	1743	1749	1756	rBV2	305018	490480	69.01%	8.771%
16	12.812	1797	1803	1809	rBV4	5262	9644	1.36%	0.172%
17	13.428	1897	1904	1910	rBV	344793	536626	75.50%	9.596%
18	13.745	1952	1956	1961	rBV6	5178	9805	1.38%	0.175%
19	13.964	1987	1992	1999	rVB2	21430	35001	4.92%	0.626%
20	14.086	2006	2012	2016	rBV	7649	17014	2.39%	0.304%
21	14.208	2028	2032	2036	rBV7	4400	7212	1.01%	0.129%
22	14.257	2036	2040	2046	rBV5	10503	25427	3.58%	0.455%
23	14.391	2057	2062	2064	rBV5	9461	16876	2.37%	0.302%
24	14.422	2064	2067	2071	rVB4	11326	15341	2.16%	0.274%
25	14.617	2097	2099	2103	rBV5	4926	7530	1.06%	0.135%
26	14.690	2103	2111	2114	rBV7	15024	39252	5.52%	0.702%
27	14.732	2114	2118	2123	rBV3	30916	67301	9.47%	1.203%
28	14.781	2123	2126	2129	rVB	25370	33788	4.75%	0.604%
29	14.848	2135	2137	2139	rBV3	7969	8449	1.19%	0.151%
30	14.940	2150	2152	2156	rVB4	21430	26747	3.76%	0.478%
31	15.129	2179	2183	2191	rVB3	42916	79066	11.12%	1.414%
32	15.220	2193	2198	2202	rBV3	62702	108548	15.27%	1.941%
33	15.385	2221	2225	2231	rVB2	76281	139865	19.68%	2.501%
34	15.464	2231	2238	2243	rBV7	51292	159629	22.46%	2.855%
35	15.610	2257	2262	2267	rVB4	89754	164658	23.17%	2.944%
36	16.159	2348	2352	2358	rVB2	198404	335217	47.16%	5.994%

Data Path : Z:\voasrv\HPCHEM1\MSVOA_Y\Data\VY101323\
Data File : VY015955.D
Acq On : 13 Oct 2023 14:21
Operator : SY/MD
Sample : 04878-03
Misc : 5.05g/5.0mL/MSVOA_Y/SOIL
ALS Vial : 10 Sample Multiplier: 1

Instrument :
MSVOA_Y
ClientSampleId :
222

Integration Parameters: RTEINT.P
Integrator: RTE
Smoothing : ON Filtering: 5
Sampling : 1 Min Area: 3 % of largest Peak
Start Thrs: 0.2 Max Peaks: 100
Stop Thrs : 0 Peak Location: TOP

If leading or trailing edge < 100 prefer < Baseline drop else tangent >
Peak separation: 5

Method : Z:\voasrv\HPCHEM1\MSVOA_Y\methods\82Y101223S.M
Title : SW846 8260

37	16.482	2400	2405	2411	rBV5	132426	297964	41.92%	5.328%
----	--------	------	------	------	------	--------	--------	--------	--------

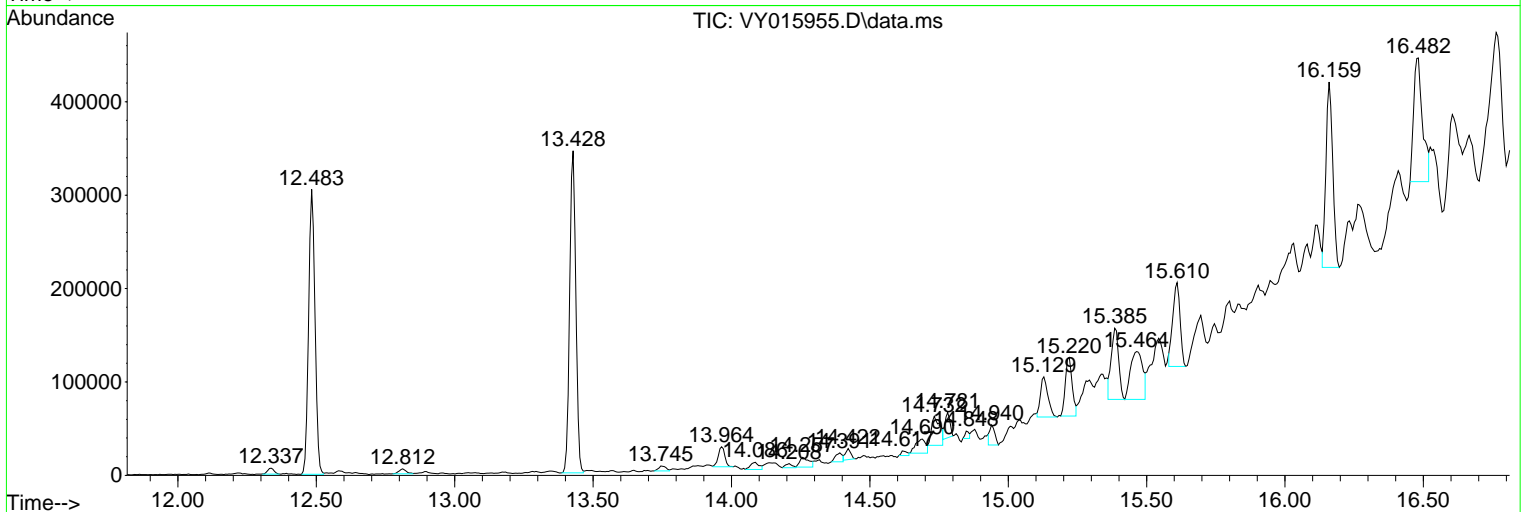
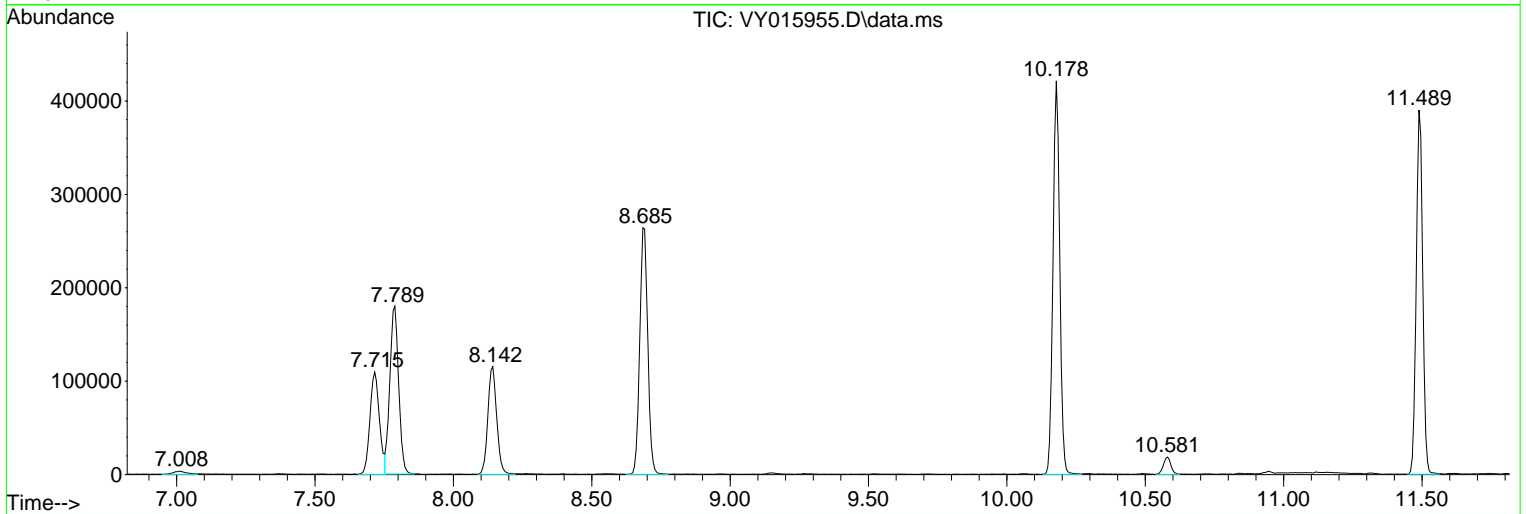
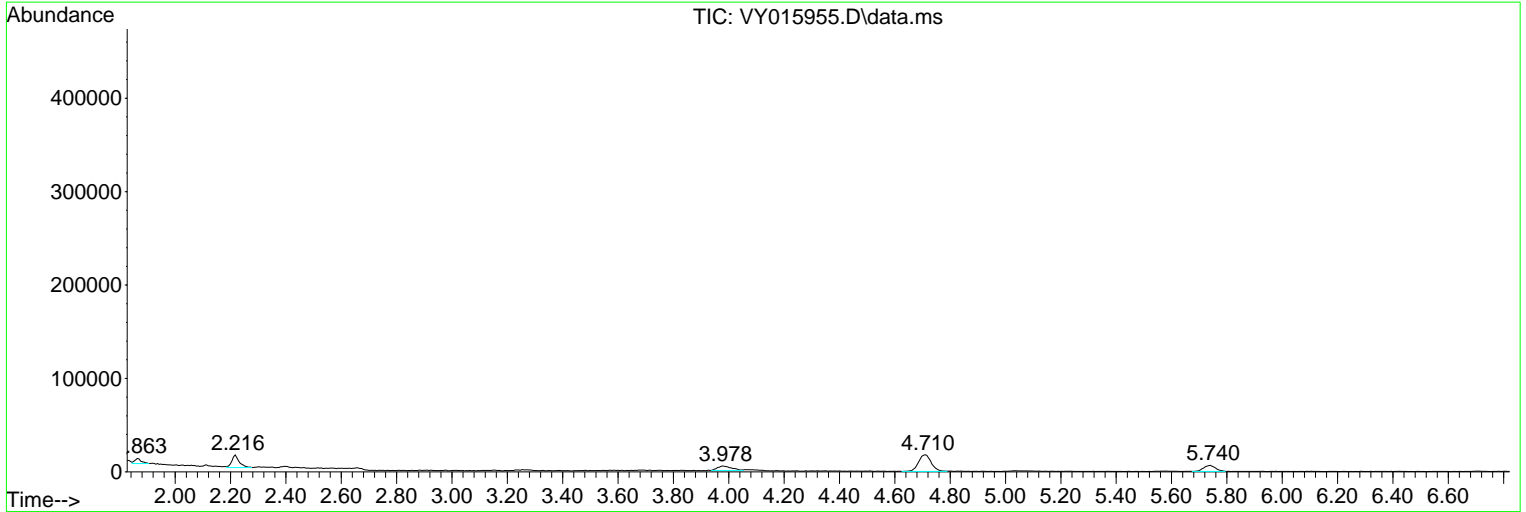
Sum of corrected areas: 5592166

Data Path : Z:\voasrv\HPCHEM1\MSVOA_Y\Data\VY101323\
 Data File : VY015955.D
 Acq On : 13 Oct 2023 14:21
 Operator : SY/MD
 Sample : 04878-03
 Misc : 5.05g/5.0mL/MSVOA_Y/SOIL
 ALS Vial : 10 Sample Multiplier: 1

Instrument :
 MSVOA_Y
 ClientSampleId :
 222

Quant Method : Z:\voasrv\HPCHEM1\MSVOA_Y\methods\82Y101223S.M
 Quant Title : SW846 8260

TIC Library : C:\Database\NIST20.L
 TIC Integration Parameters: LSCINT.P



Data Path : Z:\voasrv\HPCHEM1\MSVOA_Y\Data\VY101323\
 Data File : VY015955.D
 Acq On : 13 Oct 2023 14:21
 Operator : SY/MD
 Sample : 04878-03
 Misc : 5.05g/5.0mL/MSVOA_Y/SOIL
 ALS Vial : 10 Sample Multiplier: 1

Instrument :
 MSVOA_Y
 ClientSampleId :
 222

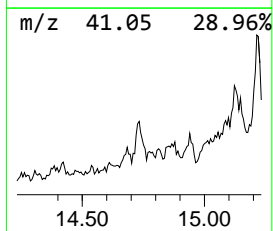
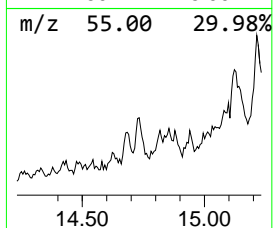
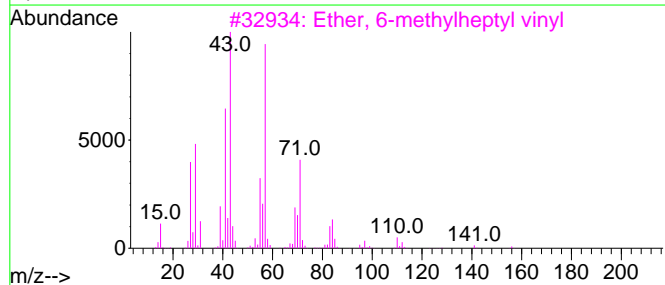
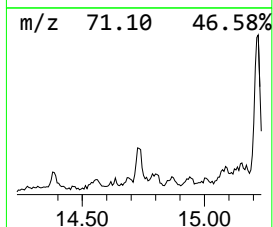
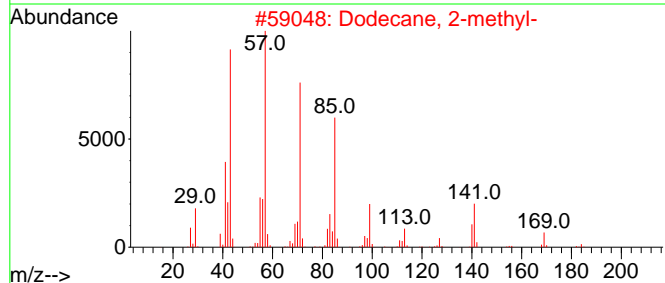
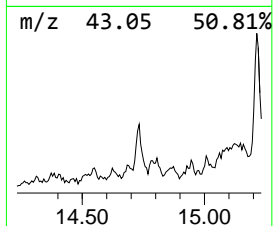
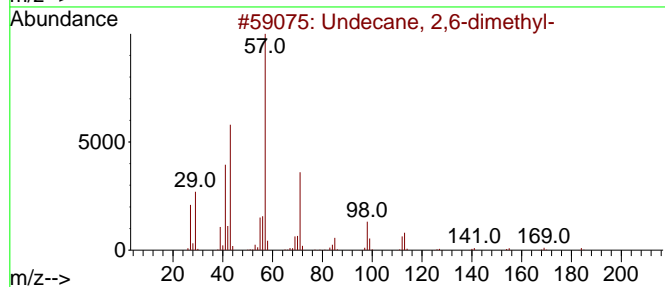
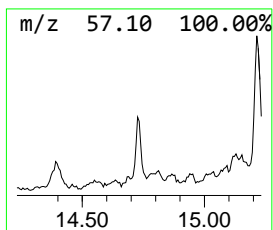
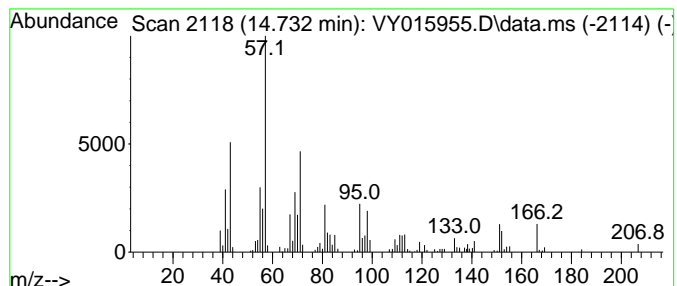
Quant Method : Z:\voasrv\HPCHEM1\MSVOA_Y\methods\82Y101223S.M
 Quant Title : SW846 8260

TIC Library : C:\Database\NIST0.L
 TIC Integration Parameters: LSCINT.P

 Peak Number 2 Undecane, 2,6-dimethyl- Concentration Rank 9

R.T.	EstConc	Area	Relative to ISTD	R.T.
14.733	6.27 ug/l	67301	1,4-Dichlorobenzene-d4	13.428

Hit#	of 5	Tentative ID	MW	MolForm	CAS#	Qual
1		Undecane, 2,6-dimethyl-	184	C13H28	017301-23-4	55
2		Dodecane, 2-methyl-	184	C13H28	001560-97-0	38
3		Ether, 6-methylheptyl vinyl	156	C10H20O	010573-35-0	38
4		Octane, 2-methyl-	128	C9H20	003221-61-2	38
5		1-Decene, 3,4-dimethyl-	168	C12H24	050871-03-9	38



Data Path : Z:\voasrv\HPCHEM1\MSVOA_Y\Data\VY101323\
 Data File : VY015955.D
 Acq On : 13 Oct 2023 14:21
 Operator : SY/MD
 Sample : 04878-03
 Misc : 5.05g/5.0mL/MSVOA_Y/SOIL
 ALS Vial : 10 Sample Multiplier: 1

Instrument :
 MSVOA_Y
 ClientSampleId :
 222

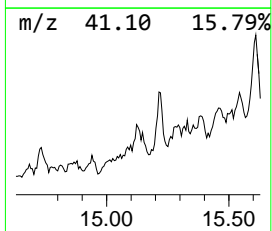
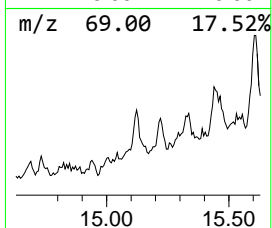
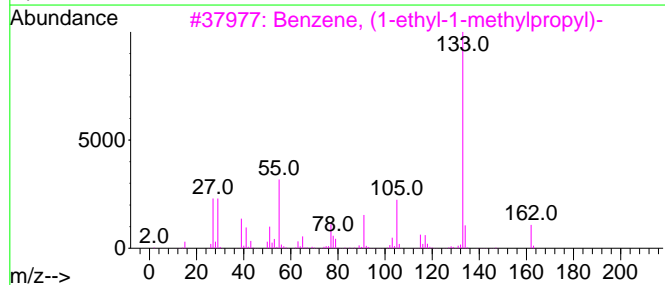
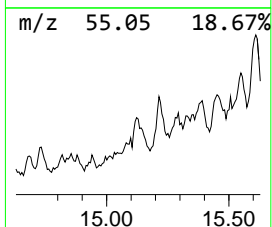
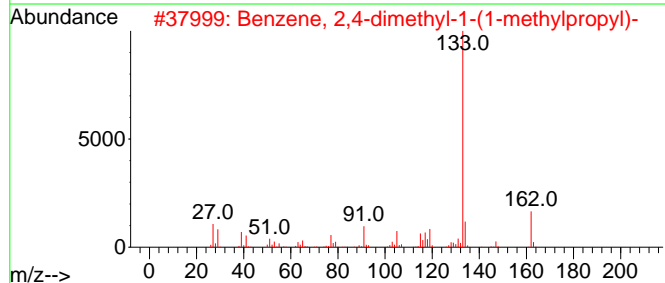
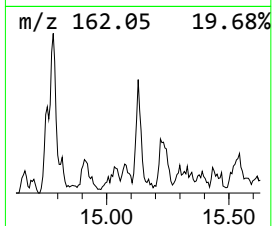
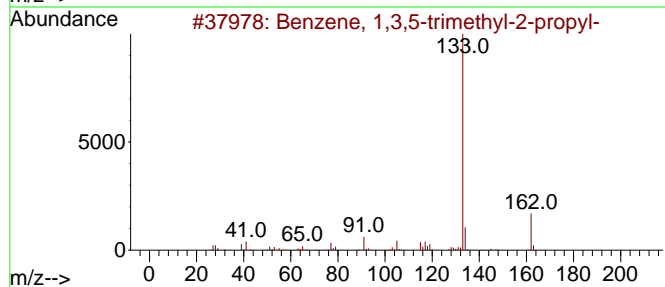
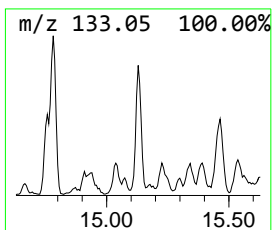
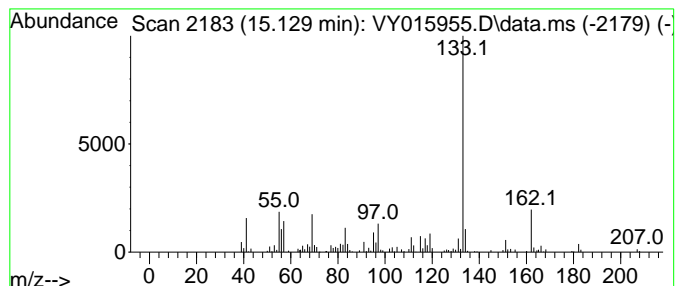
Quant Method : Z:\voasrv\HPCHEM1\MSVOA_Y\methods\82Y101223S.M
 Quant Title : SW846 8260

TIC Library : C:\Database\NIST20.L
 TIC Integration Parameters: LSCINT.P

 Peak Number 3 Benzene, 1,3,5-trimethyl-2-... Concentration Rank 7

R.T.	EstConc	Area	Relative to ISTD	R.T.
15.129	7.37 ug/l	79066	1,4-Dichlorobenzene-d4	13.428

Hit#	of	5	Tentative ID	MW	MolForm	CAS#	Qual
1			Benzene, 1,3,5-trimethyl-2-propyl-	162	C12H18	004810-04-2	76
2			Benzene, 2,4-dimethyl-1-(1-methyl-...)	162	C12H18	001483-60-9	74
3			Benzene, (1-ethyl-1-methylpropyl)-	162	C12H18	001985-97-3	59
4			2'-Ethylpropiophenone	162	C11H14O	016819-79-7	53
5			Benzene, 1,4-dipropyl-	162	C12H18	004815-57-0	50



Data Path : Z:\voasrv\HPCHEM1\MSVOA_Y\Data\VY101323\
 Data File : VY015955.D
 Acq On : 13 Oct 2023 14:21
 Operator : SY/MD
 Sample : 04878-03
 Misc : 5.05g/5.0mL/MSVOA_Y/SOIL
 ALS Vial : 10 Sample Multiplier: 1

Instrument :
 MSVOA_Y
 ClientSampleId :
 222

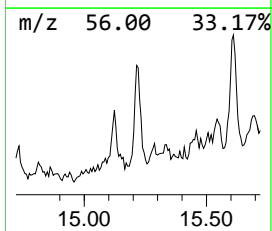
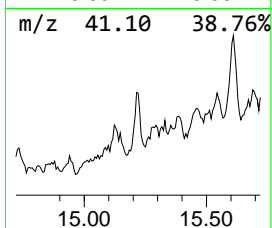
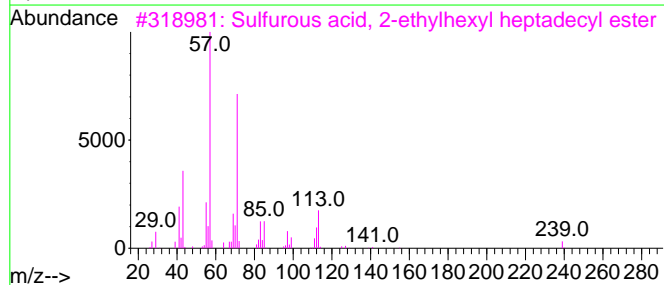
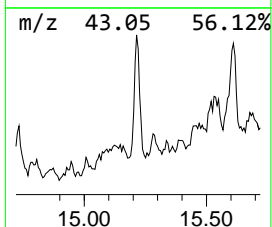
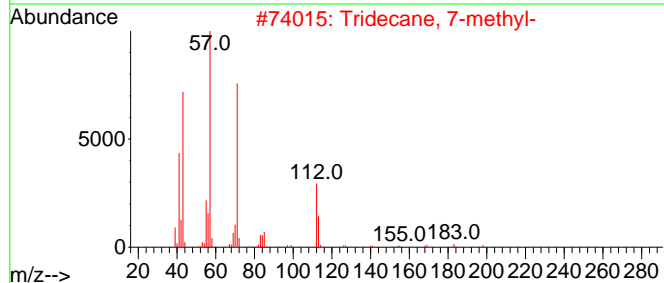
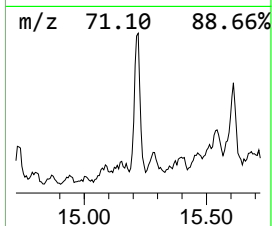
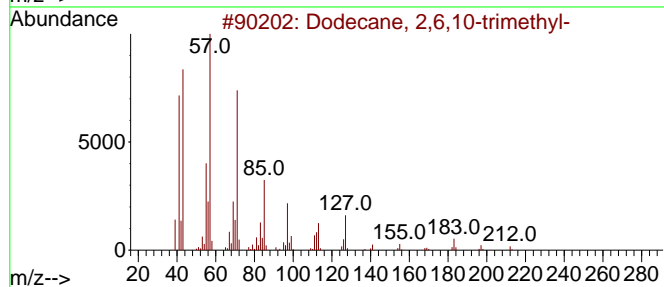
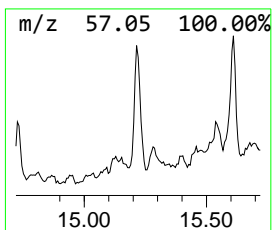
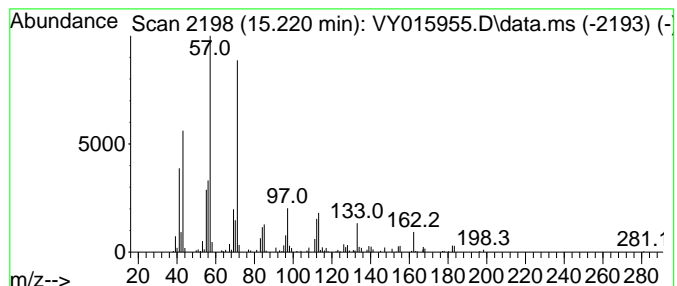
Quant Method : Z:\voasrv\HPCHEM1\MSVOA_Y\methods\82Y101223S.M
 Quant Title : SW846 8260

TIC Library : C:\Database\NIST20.L
 TIC Integration Parameters: LSCINT.P

 Peak Number 4 Dodecane, 2,6,10-trimethyl- Concentration Rank 6

R.T.	EstConc	Area	Relative to ISTD	R.T.
15.220	10.11 ug/l	108548	1,4-Dichlorobenzene-d4	13.428

Hit#	of	5	Tentative ID	MW	MolForm	CAS#	Qual
1			Dodecane, 2,6,10-trimethyl-	212	C15H32	003891-98-3	64
2			Tridecane, 7-methyl-	198	C14H30	026730-14-3	62
3			Sulfurous acid, 2-ethylhexyl hep...	432	C25H52O3S	1000309-20-0	59
4			Hexadecane, 2,6,11,15-tetramethyl-	282	C20H42	000504-44-9	59
5			Heptane, 2,6-dimethyl-	128	C9H20	001072-05-5	53



Data Path : Z:\voasrv\HPCHEM1\MSVOA_Y\Data\VY101323\
 Data File : VY015955.D
 Acq On : 13 Oct 2023 14:21
 Operator : SY/MD
 Sample : 04878-03
 Misc : 5.05g/5.0mL/MSVOA_Y/SOIL
 ALS Vial : 10 Sample Multiplier: 1

Instrument :
 MSVOA_Y
 ClientSampleId :
 222

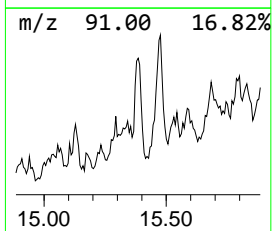
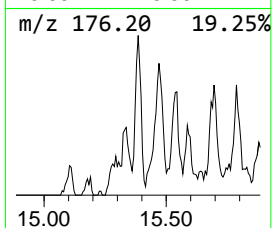
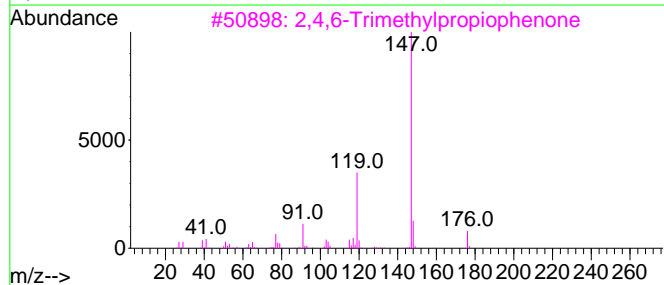
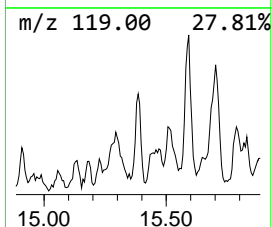
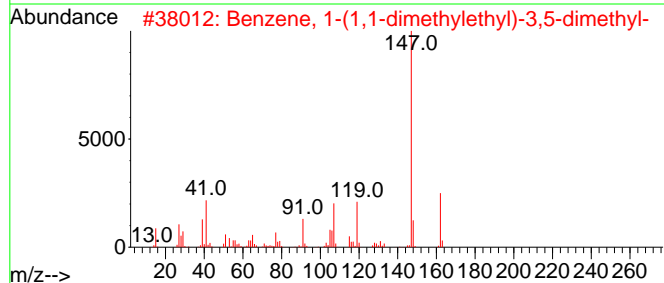
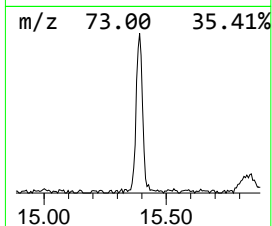
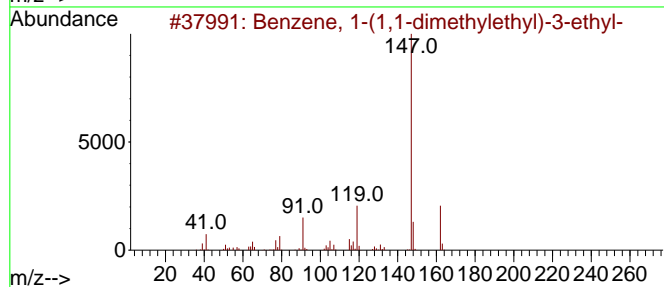
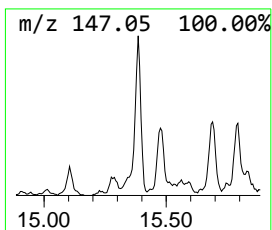
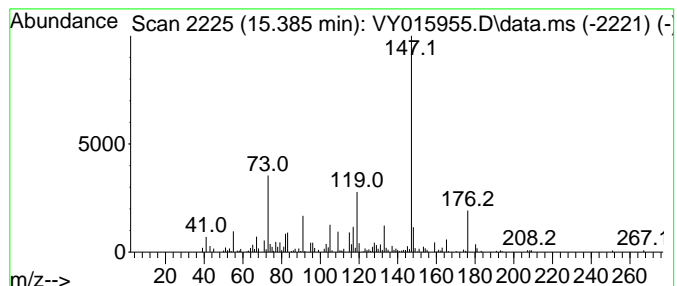
Quant Method : Z:\voasrv\HPCHEM1\MSVOA_Y\methods\82Y101223S.M
 Quant Title : SW846 8260

TIC Library : C:\Database\NIST20.L
 TIC Integration Parameters: LSCINT.P

 Peak Number 5 Benzene, 1-(1,1-dimethyleth... Concentration Rank 5

R.T.	EstConc	Area	Relative to ISTD	R.T.
15.385	13.03 ug/l	139865	1,4-Dichlorobenzene-d4	13.428

Hit#	of	5	Tentative ID	MW	MolForm	CAS#	Qual
1			Benzene, 1-(1,1-dimethylethyl)-3...	162	C12H18	014411-56-4	52
2			Benzene, 1-(1,1-dimethylethyl)-3...	162	C12H18	000098-19-1	47
3			2,4,6-Trimethylpropiophenone	176	C12H16O	002040-15-5	47
4			2,2-Dibromo-1-(2,4,6-trimethylph...	318	C11H12Br2O	329349-15-7	47
5			Benzene, 1-(1,1-dimethylethyl)-4...	162	C12H18	007364-19-4	47



Data Path : Z:\voasrv\HPCHEM1\MSVOA_Y\Data\VY101323\
 Data File : VY015955.D
 Acq On : 13 Oct 2023 14:21
 Operator : SY/MD
 Sample : 04878-03
 Misc : 5.05g/5.0mL/MSVOA_Y/SOIL
 ALS Vial : 10 Sample Multiplier: 1

Instrument :
 MSVOA_Y
 ClientSampleId :
 222

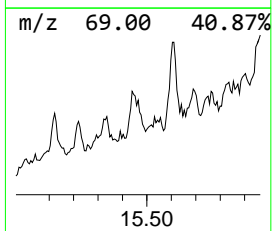
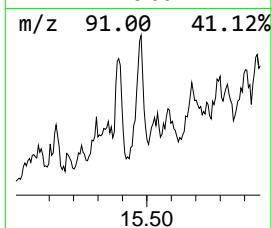
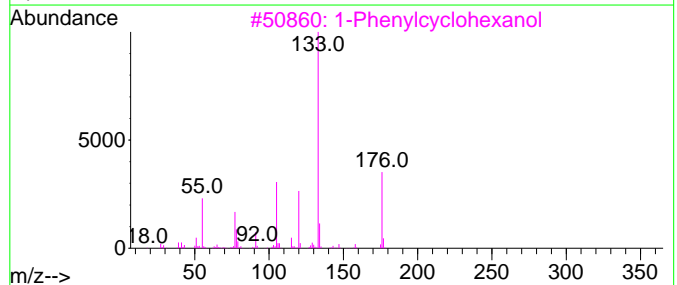
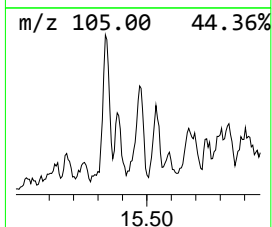
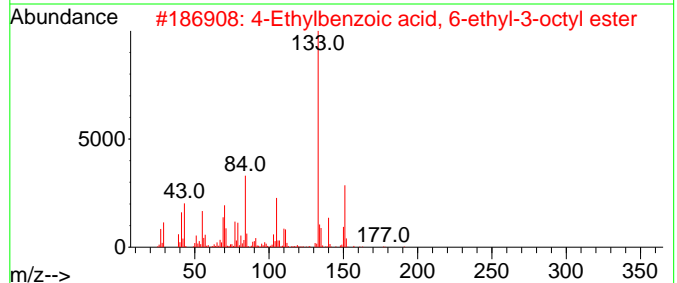
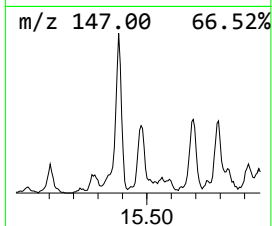
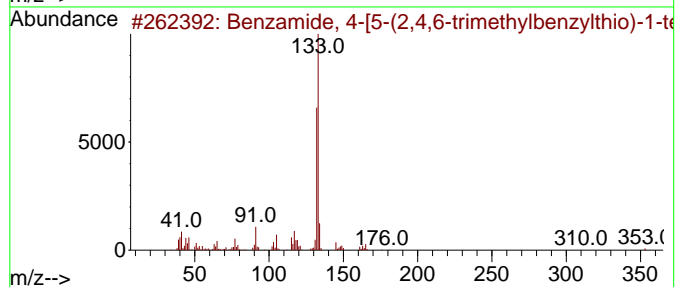
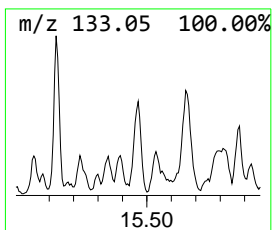
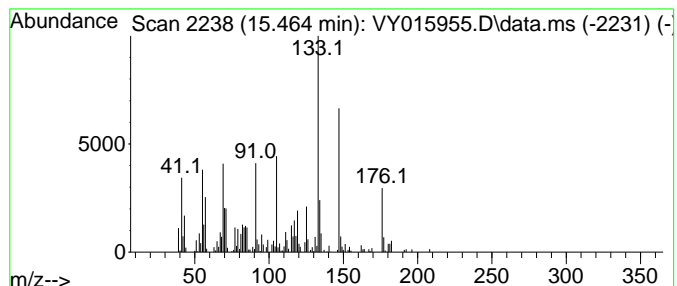
Quant Method : Z:\voasrv\HPCHEM1\MSVOA_Y\methods\82Y101223S.M
 Quant Title : SW846 8260

TIC Library : C:\Database\NIST20.L
 TIC Integration Parameters: LSCINT.P

 Peak Number 6 unknown15.464 Concentration Rank 4

R.T.	EstConc	Area	Relative to ISTD	R.T.
15.464	14.87 ug/l	159629	1,4-Dichlorobenzene-d4	13.428

Hit#	of	5	Tentative ID	MW	MolForm	CAS#	Qual
1			Benzamide, 4-[5-(2,4,6-trimethyl...	353	C18H19N5OS	309735-33-9	35
2			4-Ethylbenzoic acid, 6-ethyl-3-o...	290	C19H30O2	1000293-32-3	35
3			1-Phenylcyclohexanol	176	C12H16O	001589-60-2	35
4			4-Ethylbenzoic acid, 2-bromo-4-f...	322	C15H12BrF02	1000293-61-1	27
5			1-Propanone, 2-chloro-1-(4-ethyl...	210	C12H15ClO	055012-69-6	27



Data Path : Z:\voasrv\HPCHEM1\MSVOA_Y\Data\VY101323\
 Data File : VY015955.D
 Acq On : 13 Oct 2023 14:21
 Operator : SY/MD
 Sample : 04878-03
 Misc : 5.05g/5.0mL/MSVOA_Y/SOIL
 ALS Vial : 10 Sample Multiplier: 1

Instrument :
 MSVOA_Y
 ClientSampleId :
 222

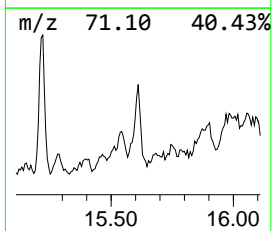
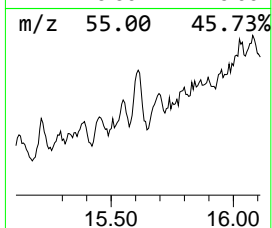
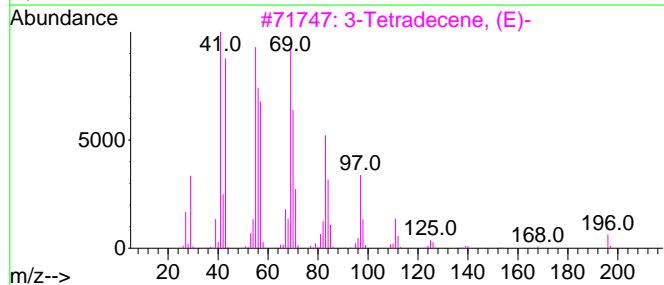
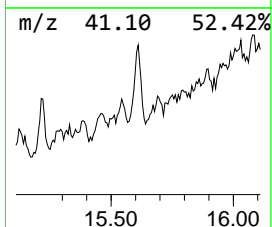
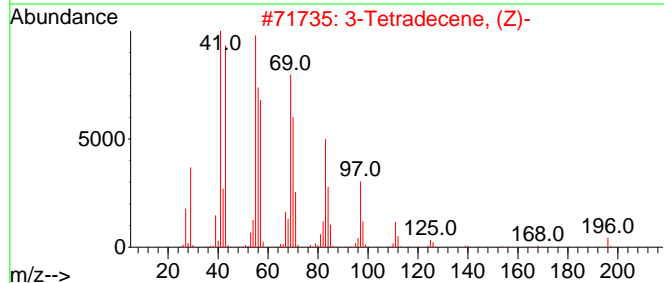
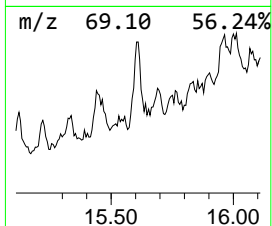
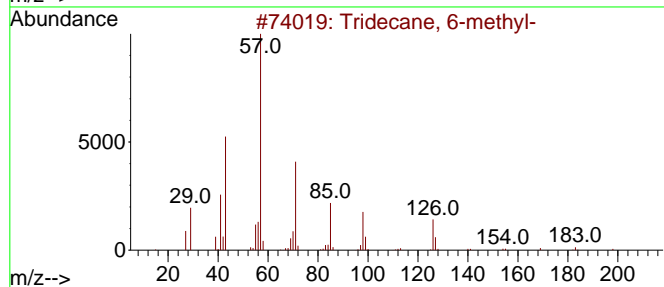
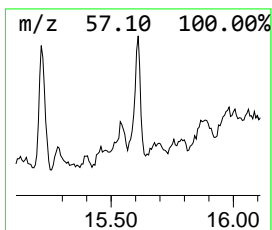
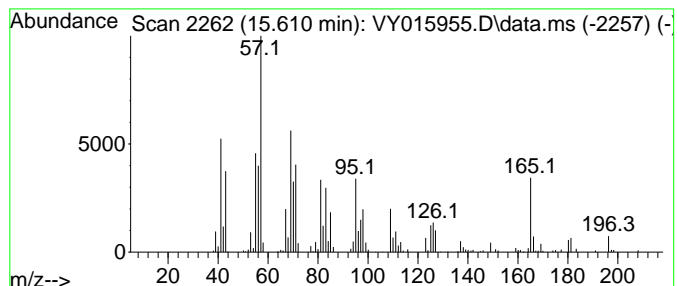
Quant Method : Z:\voasrv\HPCHEM1\MSVOA_Y\methods\82Y101223S.M
 Quant Title : SW846 8260

TIC Library : C:\Database\NIST20.L
 TIC Integration Parameters: LSCINT.P

 Peak Number 7 unknown15.610 Concentration Rank 3

R.T.	EstConc	Area	Relative to ISTD	R.T.
15.610	15.34 ug/l	164658	1,4-Dichlorobenzene-d4	13.428

Hit#	of 5	Tentative ID	MW	MolForm	CAS#	Qual
1		Tridecane, 6-methyl-	198	C14H30	013287-21-3	41
2		3-Tetradecene, (Z)-	196	C14H28	041446-67-7	35
3		3-Tetradecene, (E)-	196	C14H28	041446-68-8	35
4		Dodecane, 2,5-dimethyl-	198	C14H30	056292-65-0	25
5		7-Oxabicyclo[4.1.0]heptan-2-one,...	126	C7H10O2	021889-89-4	18



Data Path : Z:\voasrv\HPCHEM1\MSVOA_Y\Data\VY101323\
 Data File : VY015955.D
 Acq On : 13 Oct 2023 14:21
 Operator : SY/MD
 Sample : 04878-03
 Misc : 5.05g/5.0mL/MSVOA_Y/SOIL
 ALS Vial : 10 Sample Multiplier: 1

Instrument :
 MSVOA_Y
 ClientSampleId :
 222

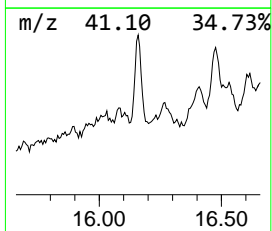
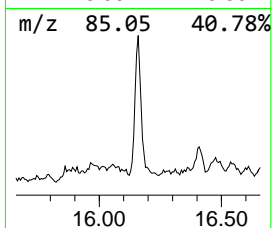
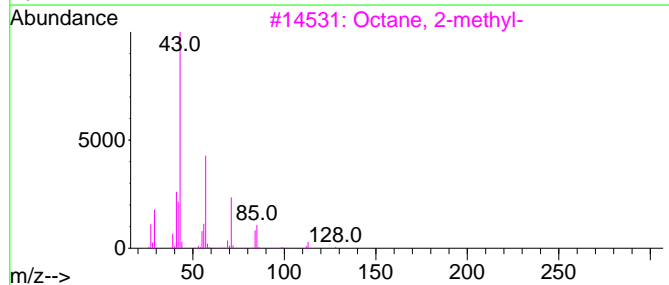
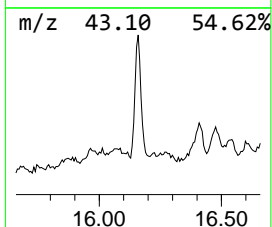
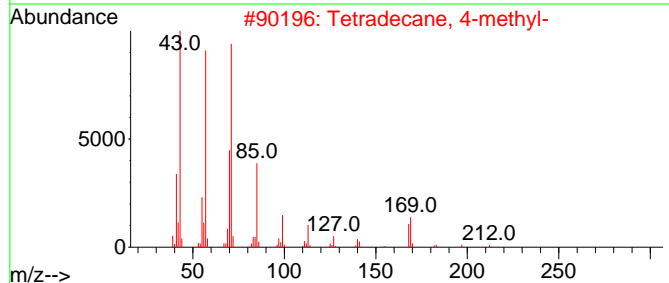
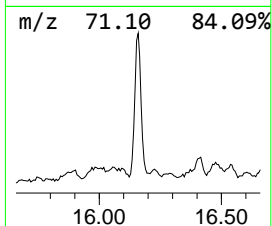
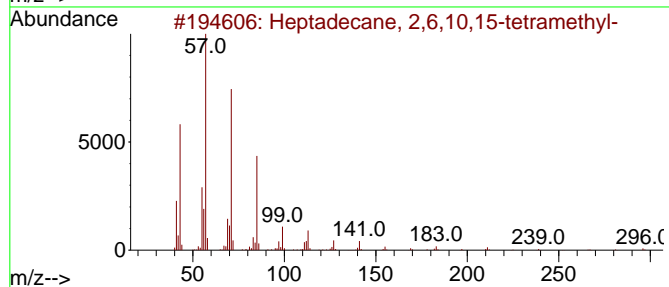
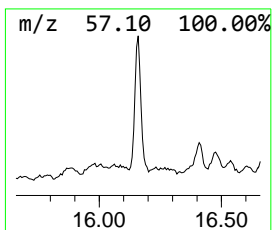
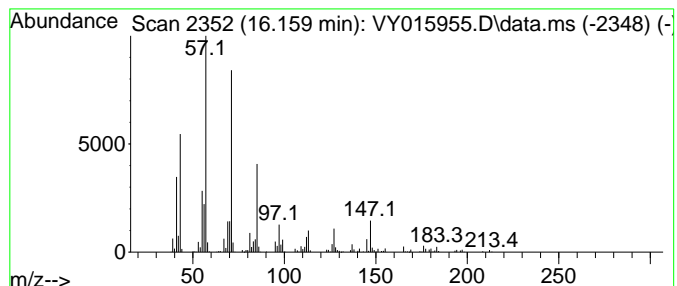
Quant Method : Z:\voasrv\HPCHEM1\MSVOA_Y\methods\82Y101223S.M
 Quant Title : SW846 8260

TIC Library : C:\Database\NIST20.L
 TIC Integration Parameters: LSCINT.P

 Peak Number 8 Heptadecane, 2,6,10,15-tetr... Concentration Rank 1

R.T.	EstConc	Area	Relative to ISTD	R.T.
16.159	31.23 ug/l	335217	1,4-Dichlorobenzene-d4	13.428

Hit#	of 5	Tentative ID	MW	MolForm	CAS#	Qual
1		Heptadecane, 2,6,10,15-tetramethyl-	296	C21H44	054833-48-6	80
2		Tetradecane, 4-methyl-	212	C15H32	025117-24-2	72
3		Octane, 2-methyl-	128	C9H20	003221-61-2	72
4		Dodecane, 2,6,10-trimethyl-	212	C15H32	003891-98-3	68
5		Decane, 5-propyl-	184	C13H28	017312-62-8	64



Data Path : Z:\voasrv\HPCHEM1\MSVOA_Y\Data\VY101323\
 Data File : VY015955.D
 Acq On : 13 Oct 2023 14:21
 Operator : SY/MD
 Sample : 04878-03
 Misc : 5.05g/5.0mL/MSVOA_Y/SOIL
 ALS Vial : 10 Sample Multiplier: 1

Instrument :
 MSVOA_Y
 ClientSampleId :
 222

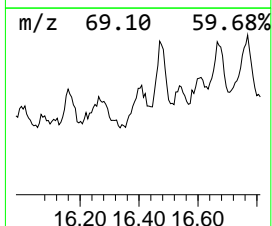
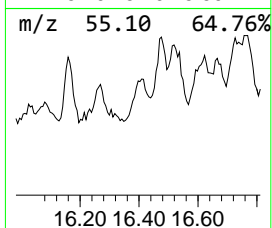
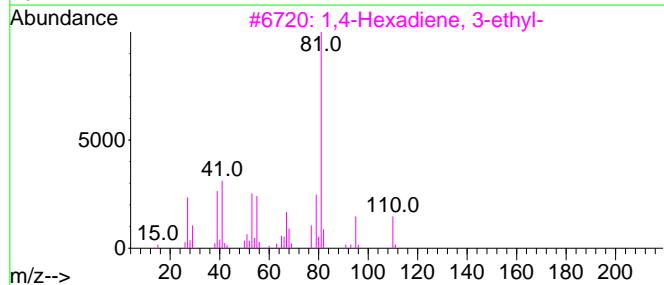
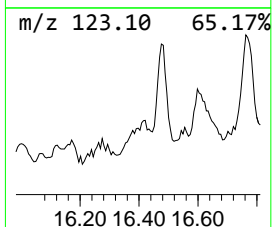
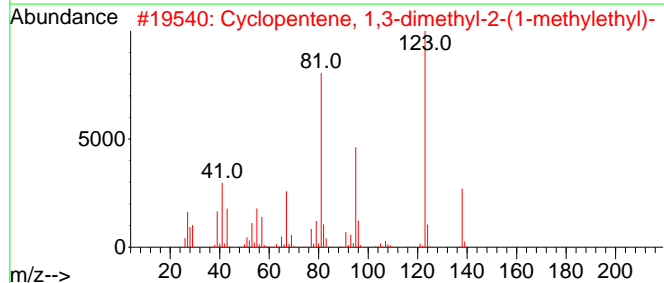
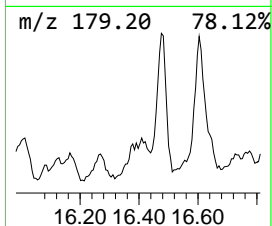
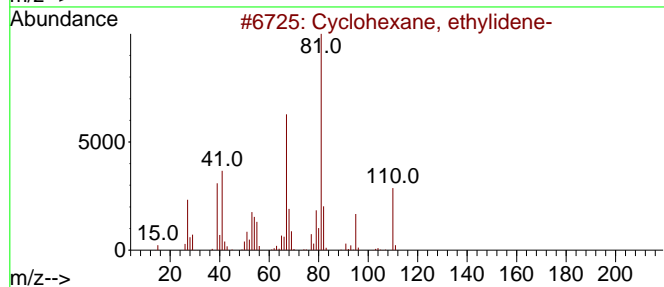
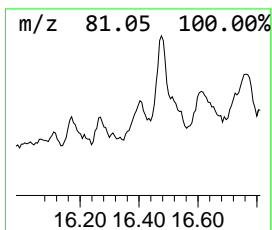
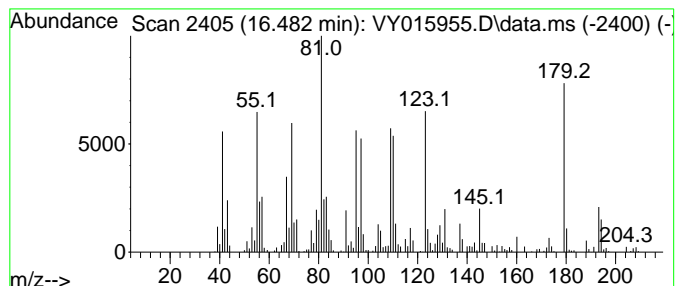
Quant Method : Z:\voasrv\HPCHEM1\MSVOA_Y\methods\82Y101223S.M
 Quant Title : SW846 8260

TIC Library : C:\Database\NIST20.L
 TIC Integration Parameters: LSCINT.P

 Peak Number 9 unknown16.482 Concentration Rank 2

R.T.	EstConc	Area	Relative to ISTD	R.T.
16.482	27.76 ug/l	297964	1,4-Dichlorobenzene-d4	13.428

Hit#	of	5	Tentative ID	MW	MolForm	CAS#	Qual
1			Cyclohexane, ethylidene-	110	C8H14	001003-64-1	38
2			Cyclopentene, 1,3-dimethyl-2-(1-...	138	C10H18	061142-32-3	27
3			1,4-Hexadiene, 3-ethyl-	110	C8H14	002080-89-9	25
4			di-t-Butylacetylene	138	C10H18	017530-24-4	25
5			2,6-Heptadienal, 2,4-dimethyl-	138	C9H14O	085136-08-9	25



Data Path : Z:\voasrv\HPCHEM1\MSVOA_Y\Data\VY101323\
Data File : VY015955.D
Acq On : 13 Oct 2023 14:21
Operator : SY/MD
Sample : 04878-03
Misc : 5.05g/5.0mL/MSVOA_Y/SOIL
ALS Vial : 10 Sample Multiplier: 1

Instrument :
MSVOA_Y
ClientSampleId :
222

Quant Method : Z:\voasrv\HPCHEM1\MSVOA_Y\methods\82Y101223S.M
Quant Title : SW846 8260

TIC Library : C:\Database\NIST0.L
TIC Integration Parameters: LSCINT.P

TIC Top Hit name	RT	EstConc	Units	Response	--Internal Standard--			
					#	RT	Resp	Conc
Undecane, 2,6-d...	14.733	6.3	ug/l	67301	4	13.428	536626	50.0
Benzene, 1,3,5-...	15.129	7.4	ug/l	79066	4	13.428	536626	50.0
Dodecane, 2,6,1...	15.220	10.1	ug/l	108548	4	13.428	536626	50.0
Benzene, 1-(1,1...	15.385	13.0	ug/l	139865	4	13.428	536626	50.0
unknown15.464	15.464	14.9	ug/l	159629	4	13.428	536626	50.0
unknown15.610	15.610	15.3	ug/l	164658	4	13.428	536626	50.0
Heptadecane, 2,...	16.159	31.2	ug/l	335217	4	13.428	536626	50.0
unknown16.482	16.482	27.8	ug/l	297964	4	13.428	536626	50.0