

Data Path : Z:\voasrv\HPCHEM1\MSVOA_Y\Data\VY101525\
 Data File : VY023479.D
 Acq On : 15 Oct 2025 15:52
 Operator : SY/MD
 Sample : VIBLK
 Misc : 5.00g/5.0mL/MSVOA_Y/SOIL
 ALS Vial : 11 Sample Multiplier: 1

Quant Time: Oct 16 02:46:07 2025
 Quant Method : Z:\voasrv\HPCHEM1\MSVOA_Y\methods\82Y100725S.M
 Quant Title : SW846 8260
 QLast Update : Wed Oct 08 05:12:50 2025
 Response via : Initial Calibration

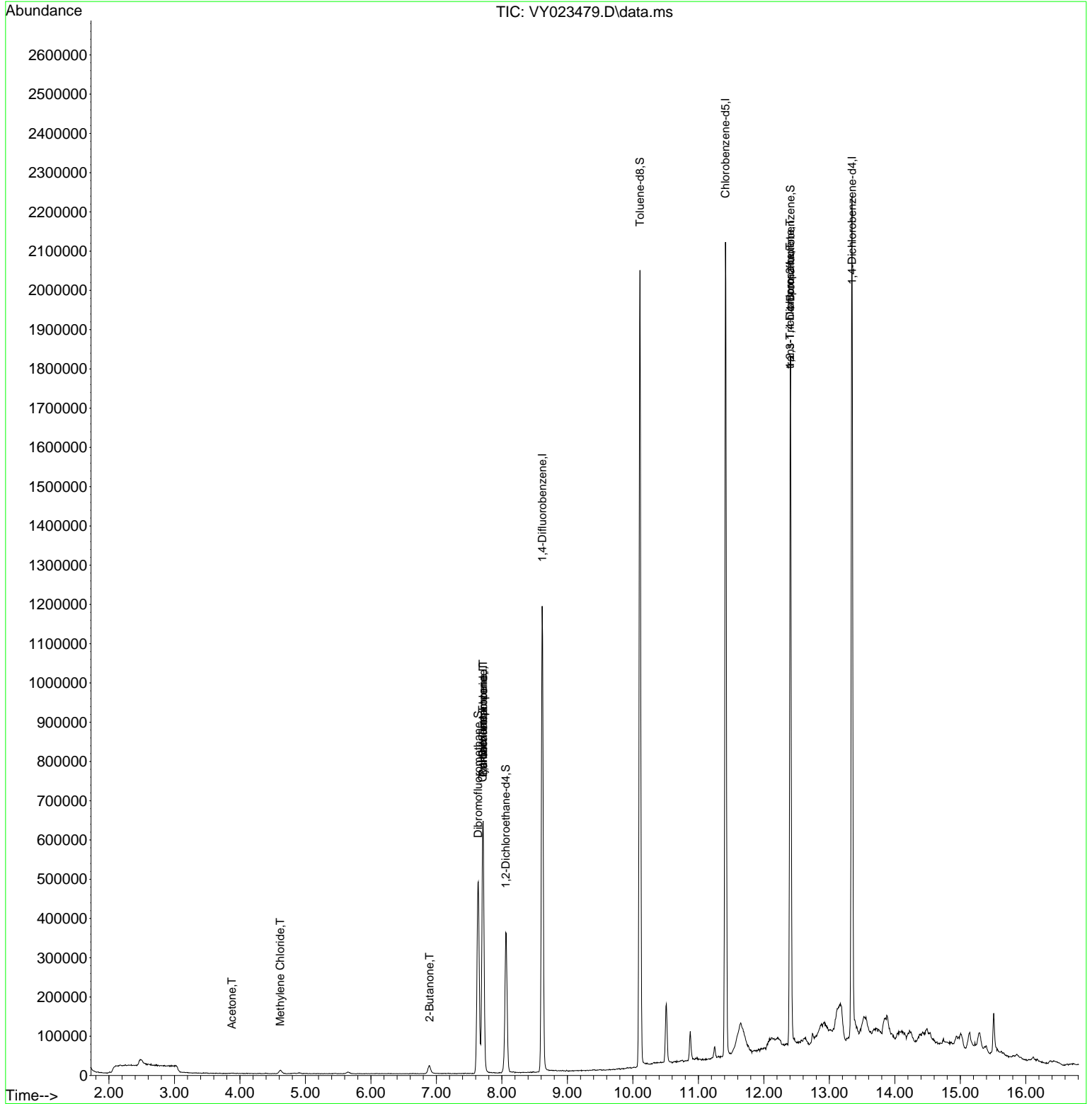
Compound	R.T.	QIon	Response	Conc	Units	Dev(Min)

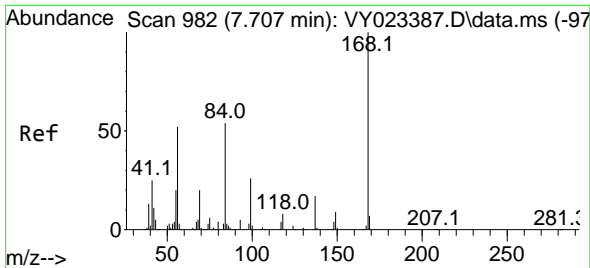
Internal Standards						
1) Pentafluorobenzene	7.713	168	538049	50.000	ug/l	0.00
34) 1,4-Difluorobenzene	8.615	114	1080880	50.000	ug/l	0.00
63) Chlorobenzene-d5	11.414	117	1179304	50.000	ug/l	0.00
72) 1,4-Dichlorobenzene-d4	13.346	152	570152	50.000	ug/l	0.00
System Monitoring Compounds						
33) 1,2-Dichloroethane-d4	8.060	65	278667	61.936	ug/l	0.00
Spiked Amount	50.000	Range	50 - 163	Recovery	=	123.880%
35) Dibromofluoromethane	7.640	113	352884	53.133	ug/l	0.00
Spiked Amount	50.000	Range	54 - 147	Recovery	=	106.260%
50) Toluene-d8	10.109	98	1367455	55.287	ug/l	0.00
Spiked Amount	50.000	Range	58 - 134	Recovery	=	110.580%
62) 4-Bromofluorobenzene	12.407	95	507376	62.134	ug/l	0.00
Spiked Amount	50.000	Range	30 - 143	Recovery	=	124.260%
Target Compounds						
					Qvalue	
16) Acetone	3.878	43	1086	1.014	ug/l	93
20) Methylene Chloride	4.616	84	7006	1.210	ug/l #	86
25) 2-Butanone	6.896	43	1488	1.138	ug/l #	40
31) Cyclohexane	7.707	56	8966	1.198	ug/l #	1
36) 1,1-Dichloropropene	7.713	75	35620	4.051	ug/l #	48
38) Carbon Tetrachloride	7.713	117	50143	4.703	ug/l #	16
76) 1,2,3-Trichloropropane	12.401	75	251454	49.988	ug/l #	100
81) trans-1,4-Dichloro-2-b...	12.401	75	251454	122.581	ug/l #	15

(#) = qualifier out of range (m) = manual integration (+) = signals summed

Data Path : Z:\voasrv\HPCHEM1\MSVOA_Y\Data\VY101525\
 Data File : VY023479.D
 Acq On : 15 Oct 2025 15:52
 Operator : SY/MD
 Sample : VIBLK
 Misc : 5.00g/5.0mL/MSVOA_Y/SOIL
 ALS Vial : 11 Sample Multiplier: 1

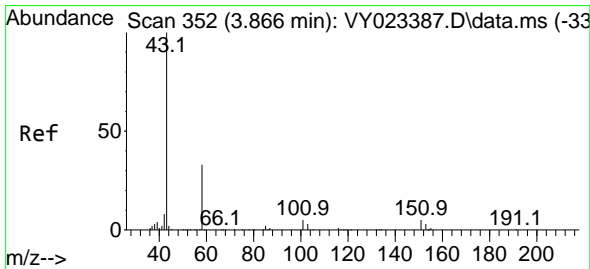
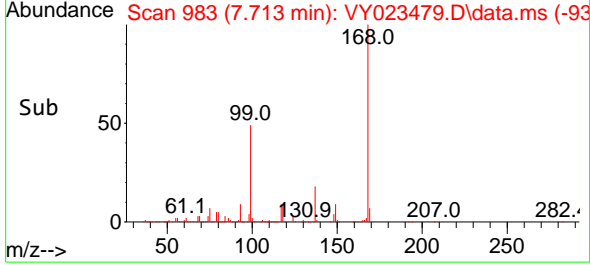
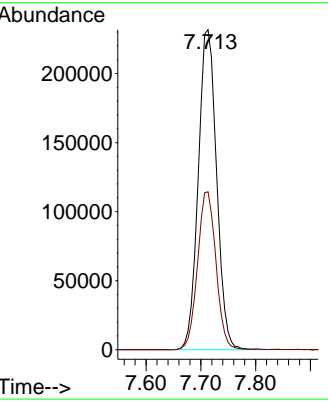
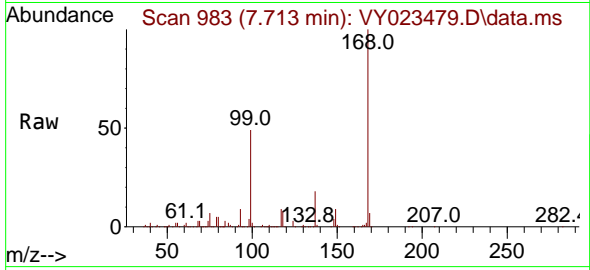
Quant Time: Oct 16 02:46:07 2025
 Quant Method : Z:\voasrv\HPCHEM1\MSVOA_Y\methods\82Y100725S.M
 Quant Title : SW846 8260
 QLast Update : Wed Oct 08 05:12:50 2025
 Response via : Initial Calibration





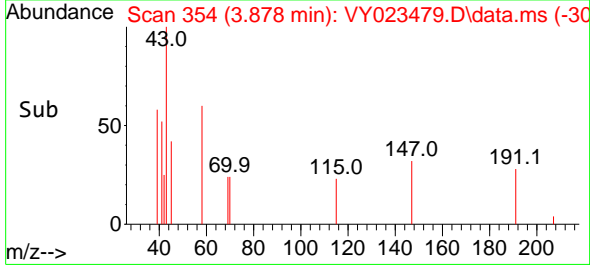
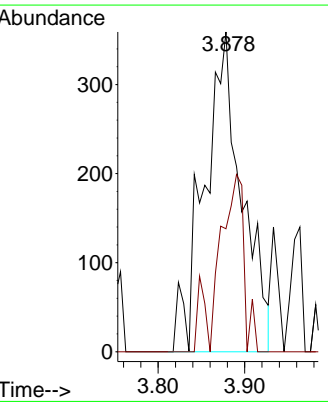
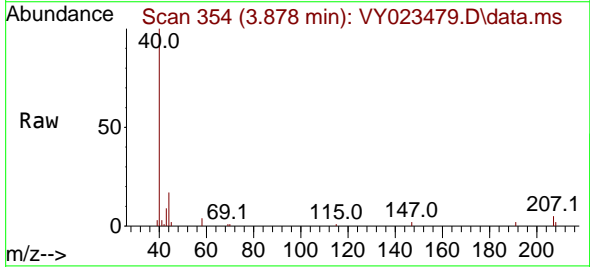
#1
 Pentafluorobenzene
 Concen: 50.000 ug/l
 RT: 7.713 min Scan# 983
 Delta R.T. 0.006 min
 Lab File: VY023479.D
 Acq: 15 Oct 2025 15:52

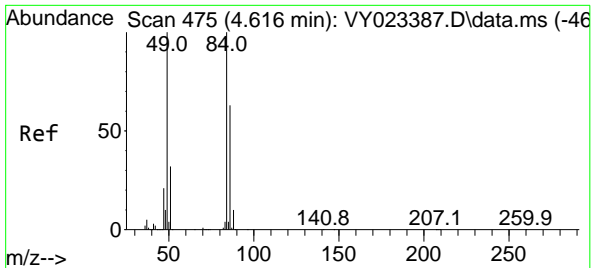
Tgt Ion: 168 Resp: 538049
 Ion Ratio Lower Upper
 168 100
 99 49.4 39.7 59.5



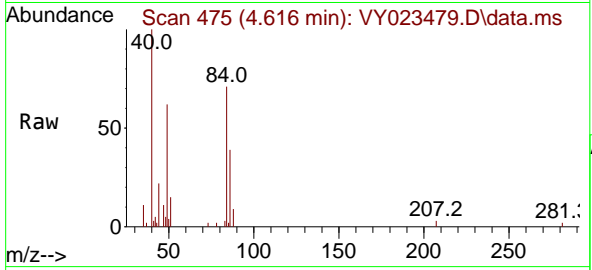
#16
 Acetone
 Concen: 1.014 ug/l
 RT: 3.878 min Scan# 354
 Delta R.T. 0.012 min
 Lab File: VY023479.D
 Acq: 15 Oct 2025 15:52

Tgt Ion: 43 Resp: 1086
 Ion Ratio Lower Upper
 43 100
 58 38.4 27.7 41.5



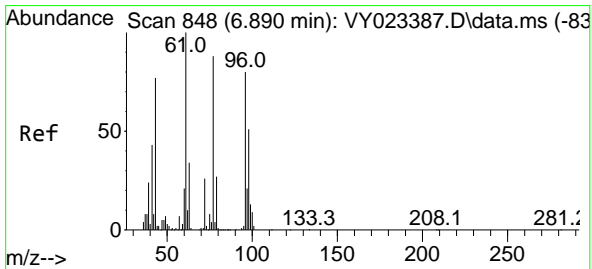
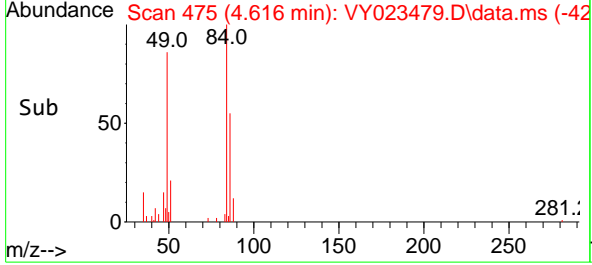
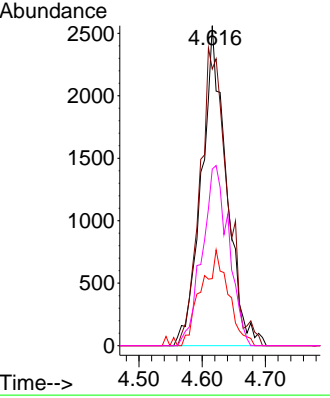


#20
 Methylene Chloride
 Concen: 1.210 ug/l
 RT: 4.616 min Scan# 475
 Delta R.T. -0.000 min
 Lab File: VY023479.D
 Acq: 15 Oct 2025 15:52

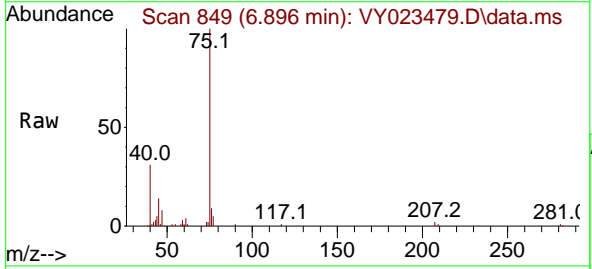


Tgt Ion: 84 Resp: 7006

Ion	Ratio	Lower	Upper
84	100		
49	86.5	80.2	120.4
51	21.0	25.9	38.9#
86	55.2	50.6	75.8

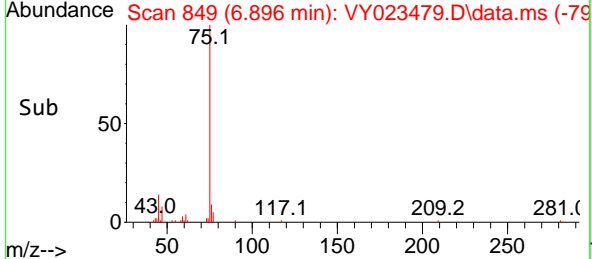
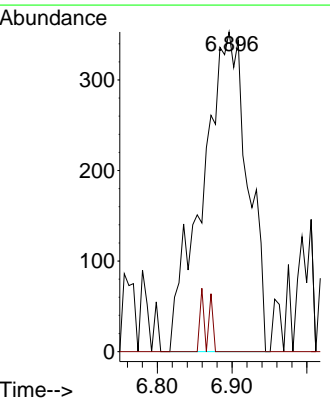


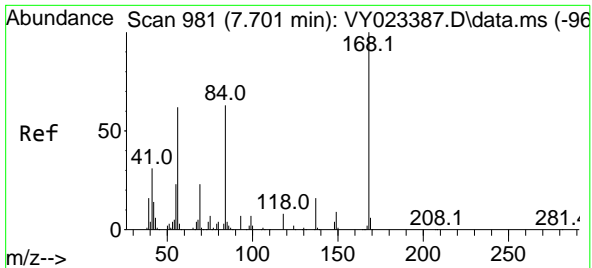
#25
 2-Butanone
 Concen: 1.138 ug/l
 RT: 6.896 min Scan# 849
 Delta R.T. 0.006 min
 Lab File: VY023479.D
 Acq: 15 Oct 2025 15:52



Tgt Ion: 43 Resp: 1488

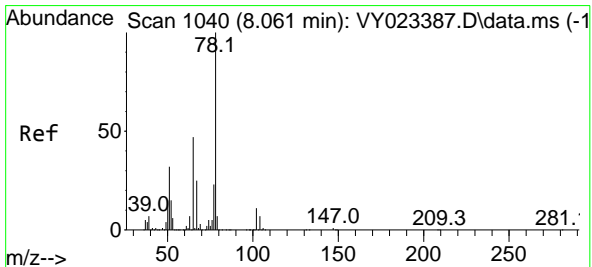
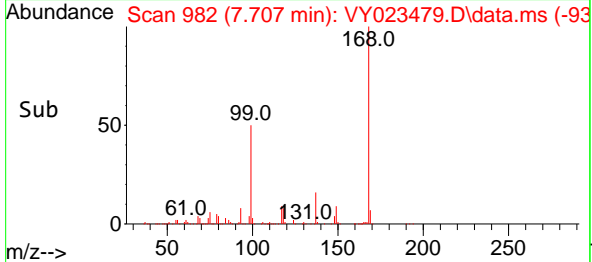
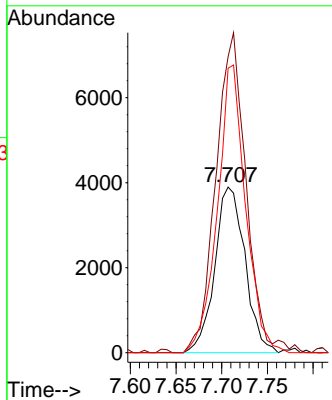
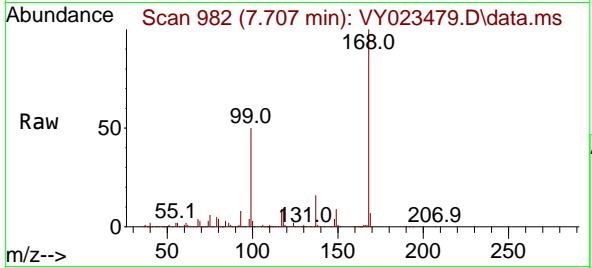
Ion	Ratio	Lower	Upper
43	100		
72	0.0	27.4	41.2#





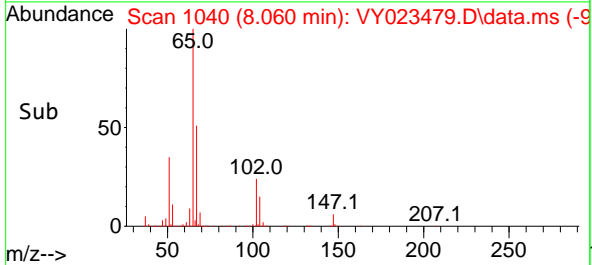
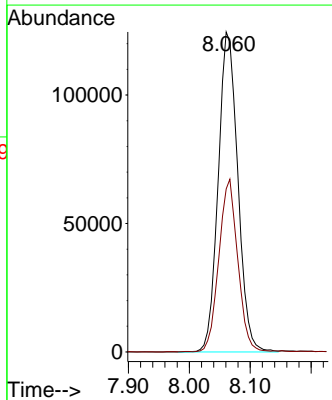
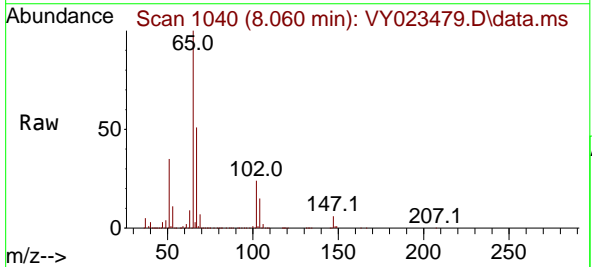
#31
 Cyclohexane
 Concen: 1.198 ug/l
 RT: 7.707 min Scan# 982
 Delta R.T. 0.006 min
 Lab File: VY023479.D
 Acq: 15 Oct 2025 15:52

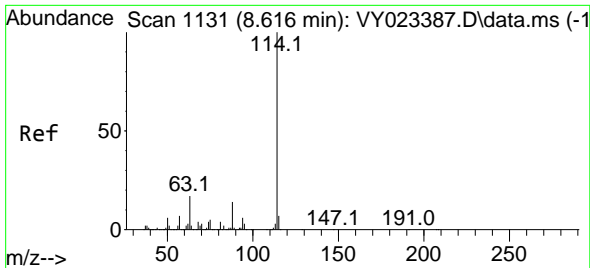
Tgt Ion	Resp	Lower	Upper
56	8966		
100			
69	178.7	30.0	45.0#
84	171.8	81.2	121.8#



#33
 1,2-Dichloroethane-d4
 Concen: 61.936 ug/l
 RT: 8.060 min Scan# 1040
 Delta R.T. -0.000 min
 Lab File: VY023479.D
 Acq: 15 Oct 2025 15:52

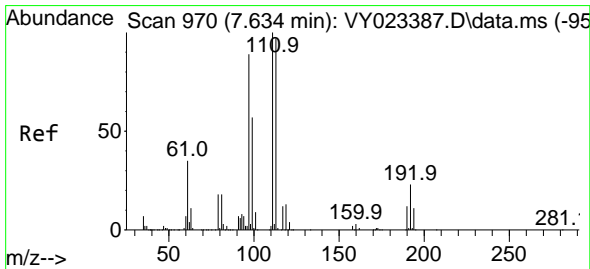
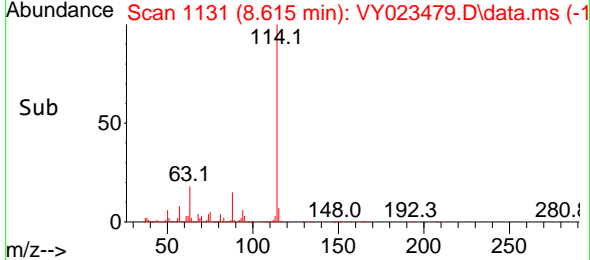
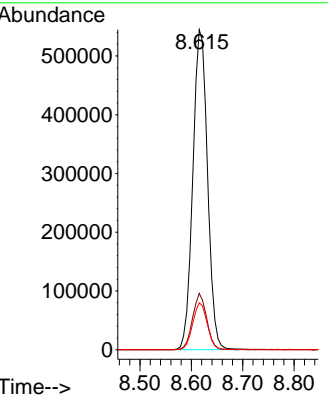
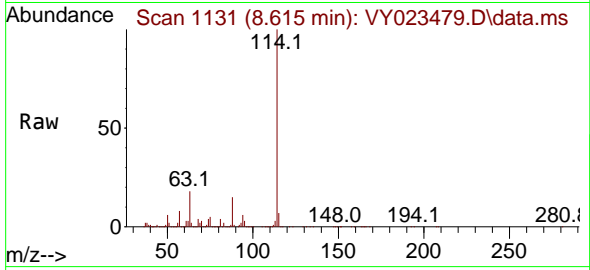
Tgt Ion	Resp	Lower	Upper
65	278667		
100			
67	51.8	0.0	105.8





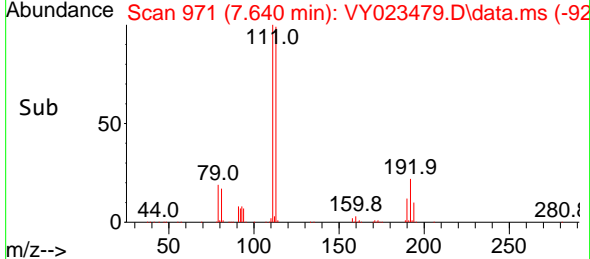
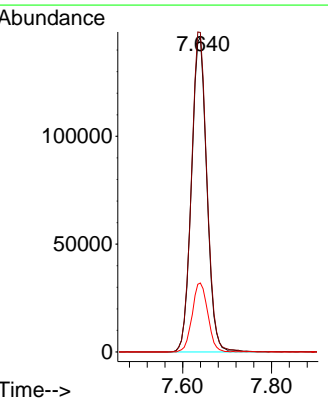
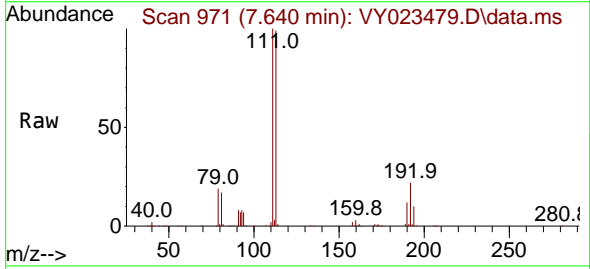
#34
 1,4-Difluorobenzene
 Concen: 50.000 ug/l
 RT: 8.615 min Scan# 1131
 Delta R.T. -0.000 min
 Lab File: VY023479.D
 Acq: 15 Oct 2025 15:52

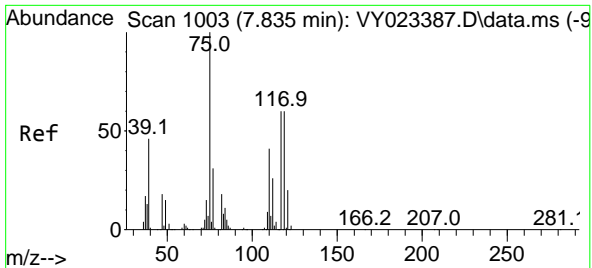
Tgt Ion	Resp	Lower	Upper
114	100		
63	17.6	0.0	34.2
88	14.6	0.0	28.4



#35
 Dibromofluoromethane
 Concen: 53.133 ug/l
 RT: 7.640 min Scan# 971
 Delta R.T. 0.006 min
 Lab File: VY023479.D
 Acq: 15 Oct 2025 15:52

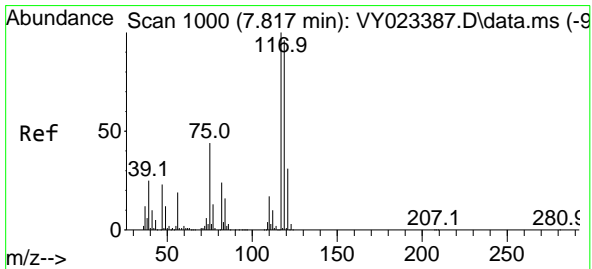
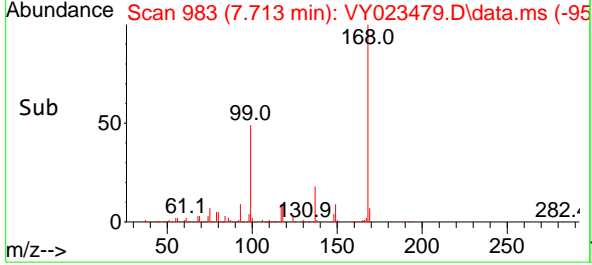
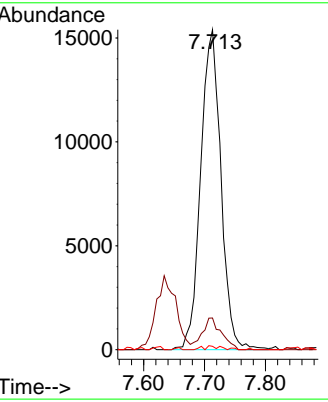
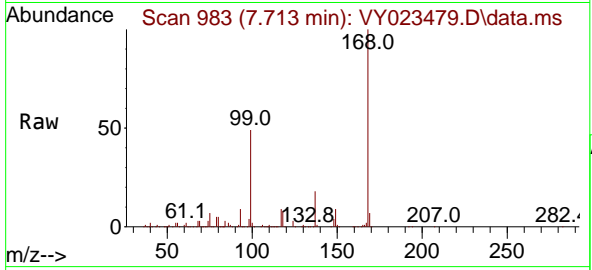
Tgt Ion	Resp	Lower	Upper
113	100		
111	102.5	81.8	122.6
192	22.2	18.0	27.0





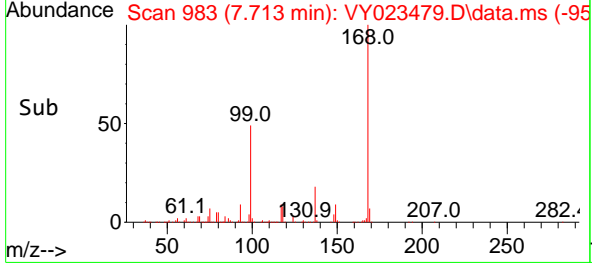
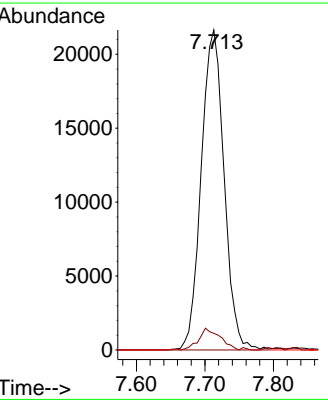
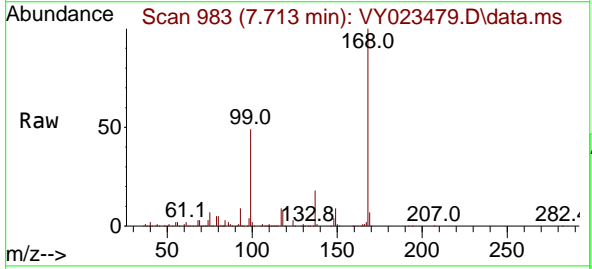
#36
 1,1-Dichloropropene
 Concen: 4.051 ug/l
 RT: 7.713 min Scan# 983
 Delta R.T. -0.122 min
 Lab File: VY023479.D
 Acq: 15 Oct 2025 15:52

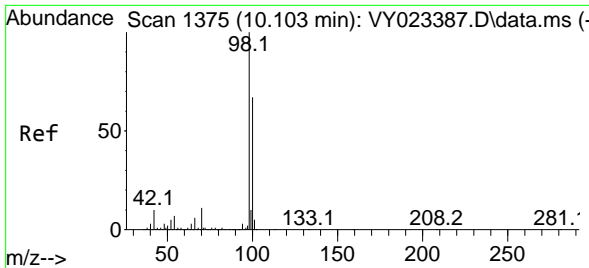
Tgt Ion	Resp	Lower	Upper
75	35620		
110	100		
110	9.4	19.9	59.7#
77	0.7	25.0	37.6#



#38
 Carbon Tetrachloride
 Concen: 4.703 ug/l
 RT: 7.713 min Scan# 983
 Delta R.T. -0.104 min
 Lab File: VY023479.D
 Acq: 15 Oct 2025 15:52

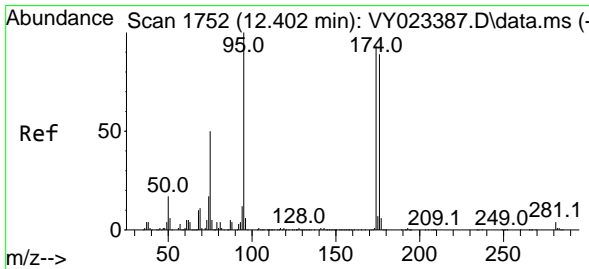
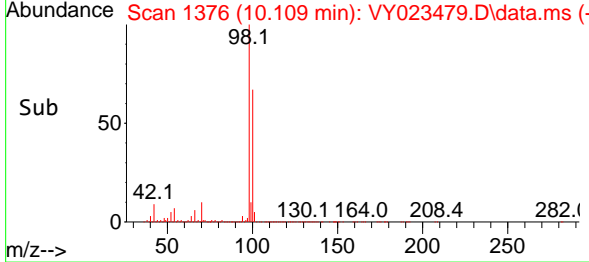
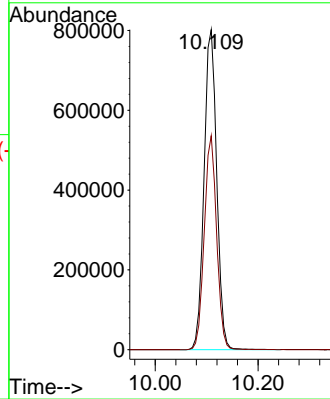
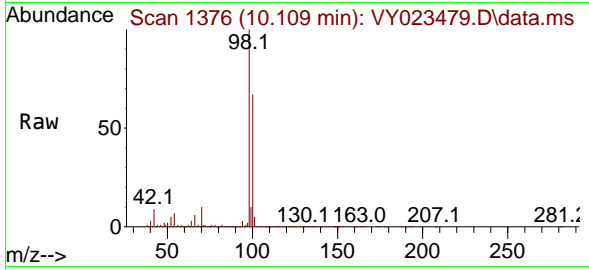
Tgt Ion	Resp	Lower	Upper
117	50143		
117	100		
119	5.2	76.8	115.2#
121	0.0	24.5	36.7#





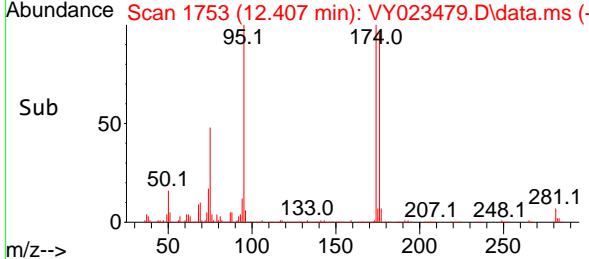
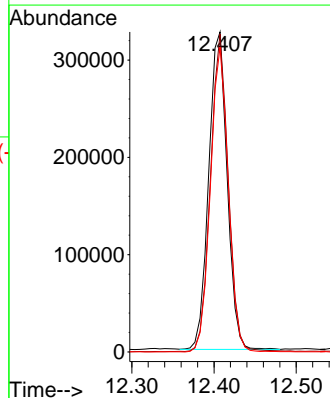
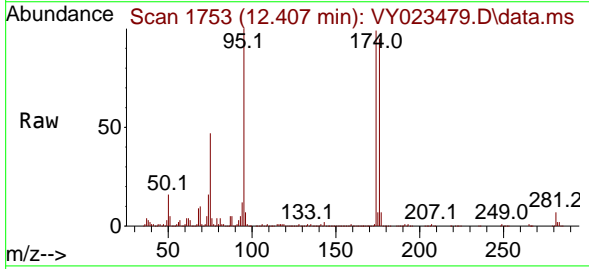
#50
 Toluene-d8
 Concen: 55.287 ug/l
 RT: 10.109 min Scan# 1376
 Delta R.T. 0.006 min
 Lab File: VY023479.D
 Acq: 15 Oct 2025 15:52

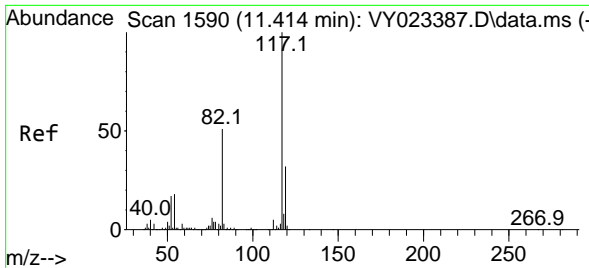
Tgt Ion: 98 Resp: 1367455
 Ion Ratio Lower Upper
 98 100
 100 65.5 53.0 79.4



#62
 4-Bromofluorobenzene
 Concen: 62.134 ug/l
 RT: 12.407 min Scan# 1753
 Delta R.T. 0.006 min
 Lab File: VY023479.D
 Acq: 15 Oct 2025 15:52

Tgt Ion: 95 Resp: 507376
 Ion Ratio Lower Upper
 95 100
 174 97.3 0.0 192.8
 176 93.3 0.0 187.6

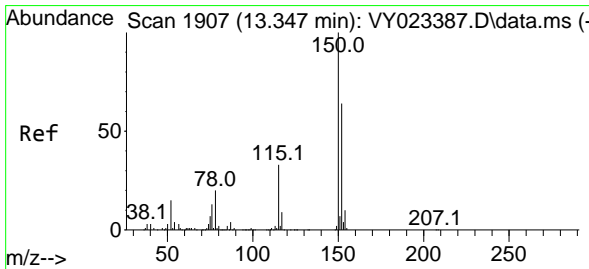
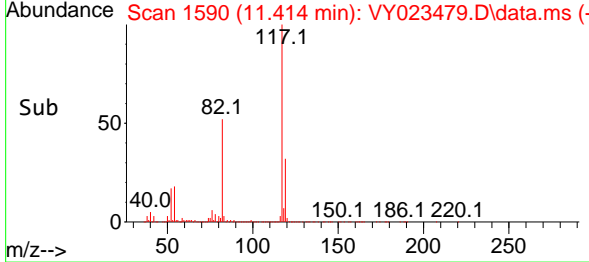
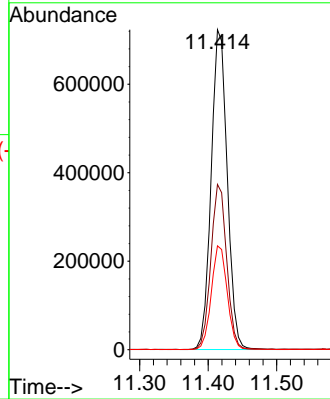
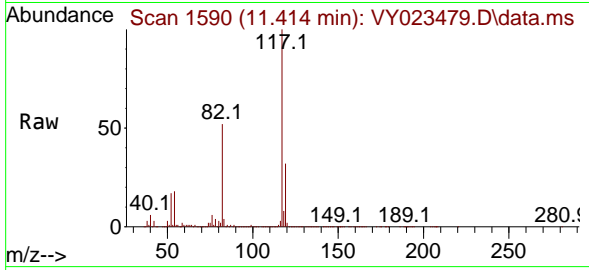




#63
 Chlorobenzene-d5
 Concen: 50.000 ug/l
 RT: 11.414 min Scan# 1590
 Delta R.T. -0.000 min
 Lab File: VY023479.D
 Acq: 15 Oct 2025 15:52

Tgt Ion:117 Resp: 1179304

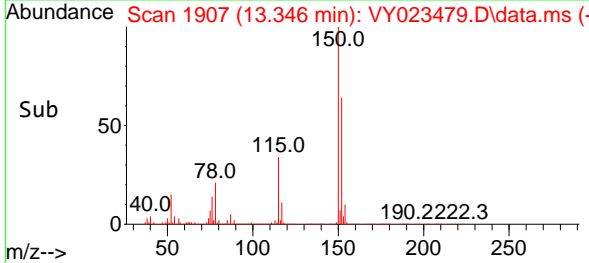
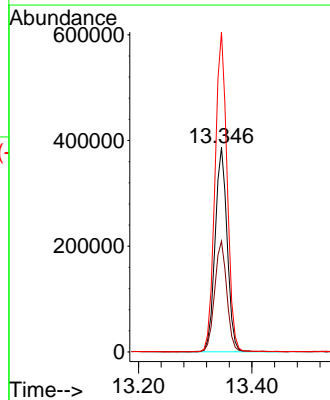
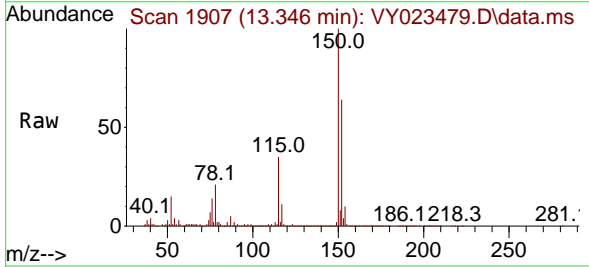
Ion	Ratio	Lower	Upper
117	100		
82	51.6	41.0	61.4
119	32.4	25.6	38.4

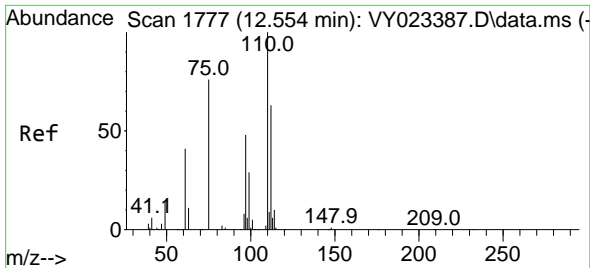


#72
 1,4-Dichlorobenzene-d4
 Concen: 50.000 ug/l
 RT: 13.346 min Scan# 1907
 Delta R.T. -0.000 min
 Lab File: VY023479.D
 Acq: 15 Oct 2025 15:52

Tgt Ion:152 Resp: 570152

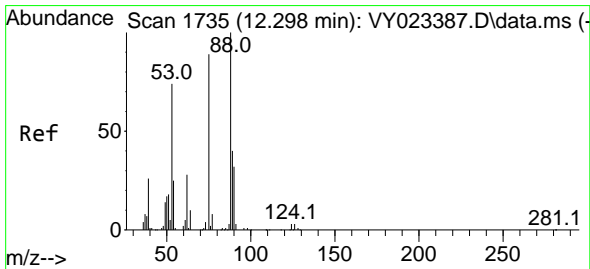
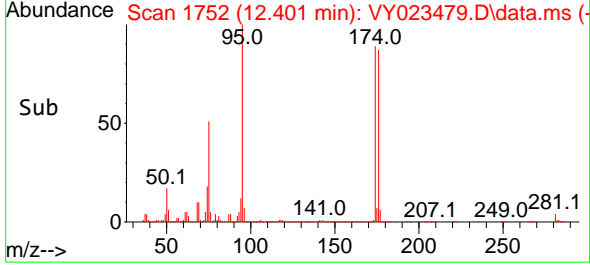
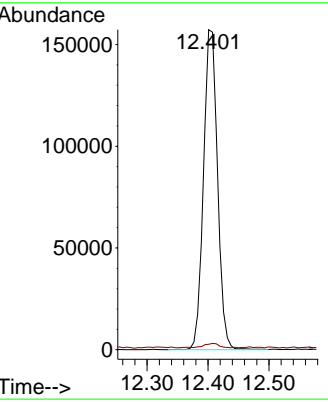
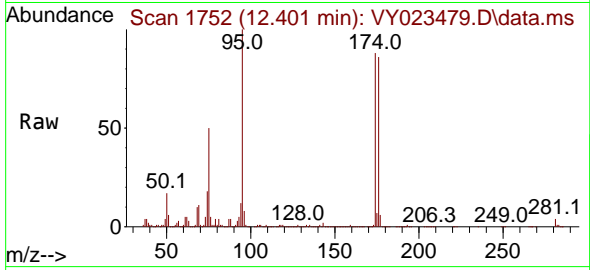
Ion	Ratio	Lower	Upper
152	100		
115	54.4	27.1	81.2
150	156.6	0.0	347.4





#76
 1,2,3-Trichloropropane
 Concen: 49.988 ug/l
 RT: 12.401 min Scan# 1752
 Delta R.T. -0.153 min
 Lab File: VY023479.D
 Acq: 15 Oct 2025 15:52

Tgt Ion	Resp	Lower	Upper
75	100		
77	1.5	0.0	0.0#



#81
 trans-1,4-Dichloro-2-butene
 Concen: 122.581 ug/l
 RT: 12.401 min Scan# 1752
 Delta R.T. 0.103 min
 Lab File: VY023479.D
 Acq: 15 Oct 2025 15:52

Tgt Ion	Resp	Lower	Upper
75	100		
53	0.3	68.6	102.8#
89	0.2	39.0	58.4#

