

Data Path : Z:\VOASRV\HPCHEM1\MSVOA Y\DATA\VY101619\  
 Data File : VY000331.D  
 Acq On : 16 Oct 2019 15:51  
 Operator : SY/MD  
 Sample : K5394-10  
 Misc : 8.01G/5ML/MSVOA Y/SOIL  
 ALS Vial : 12 Sample Multiplier: 1

Instrument :  
 MSVOA\_Y  
 ClientSampleId :  
 T-15-E1-(20)

Quant Time: Oct 17 01:55:13 2019  
 Quant Method : Z:\VOASRV\HPCHEM1\MSVOA\_Y\METHODS\82Y101119S.M  
 Quant Title : SW846 8260  
 QLast Update : Mon Oct 14 08:10:23 2019  
 Response via : Initial Calibration

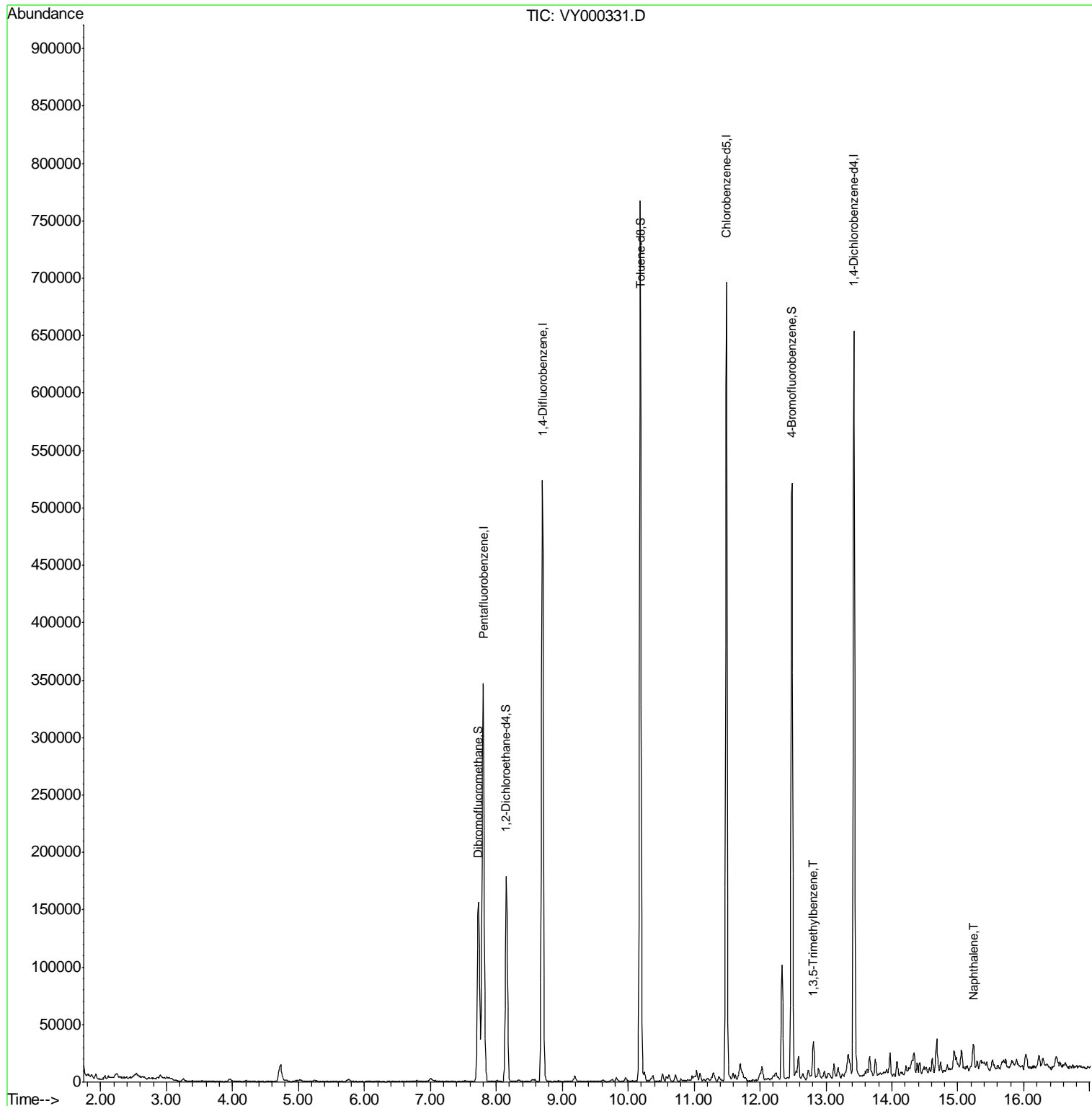
Internal Standards	R.T.	QIon	Response	Conc	Units	Dev(Min)
1) Pentafluorobenzene	7.80	168	266793	50.00	ug/l	0.00
34) 1,4-Difluorobenzene	8.70	114	440581	50.00	ug/l	0.00
63) Chlorobenzene-d5	11.49	117	370110	50.00	ug/l	0.00
72) 1,4-Dichlorobenzene-d4	13.42	152	152596	50.00	ug/l	0.00
System Monitoring Compounds						
33) 1,2-Dichloroethane-d4	8.15	65	139905	49.71	ug/l	0.00
Spiked Amount	50.000		Recovery	=	99.42%	
35) Dibromofluoromethane	7.73	113	112126	42.19	ug/l	0.00
Spiked Amount	50.000		Recovery	=	84.38%	
50) Toluene-d8	10.18	98	508209	49.71	ug/l	0.00
Spiked Amount	50.000		Recovery	=	99.42%	
62) 4-Bromofluorobenzene	12.48	95	155360	40.00	ug/l	0.00
Spiked Amount	50.000		Recovery	=	80.00%	
Target Compounds						
80) 1,3,5-Trimethylbenzene	12.81	105	11168	1.119	ug/l	95
95) Naphthalene	15.23	128	14866	2.027	ug/l #	94

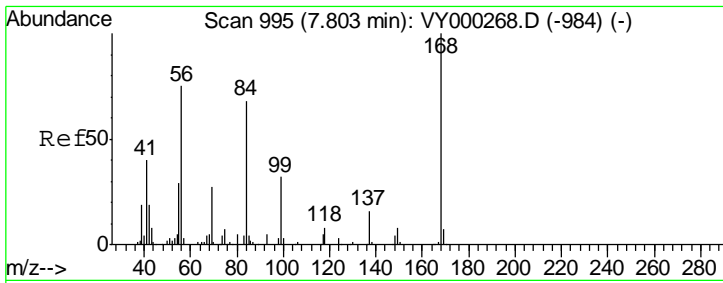
(#) = qualifier out of range (m) = manual integration (+) = signals summed

Data Path : Z:\VOASRV\HPCHEM1\MSVOA Y\DATA\VY101619\  
 Data File : VY000331.D  
 Acq On : 16 Oct 2019 15:51  
 Operator : SY/MD  
 Sample : K5394-10  
 Misc : 8.01G/5ML/MSVOA Y/SOIL  
 ALS Vial : 12 Sample Multiplier: 1

Instrument :  
 MSVOA\_Y  
 Client Sampled :  
 T-15-E1-(20)

Quant Time: Oct 17 01:55:13 2019  
 Quant Method : Z:\VOASRV\HPCHEM1\MSVOA\_Y\METHODS\82Y101119S.M  
 Quant Title : SW846 8260  
 QLast Update : Mon Oct 14 08:10:23 2019  
 Response via : Initial Calibration

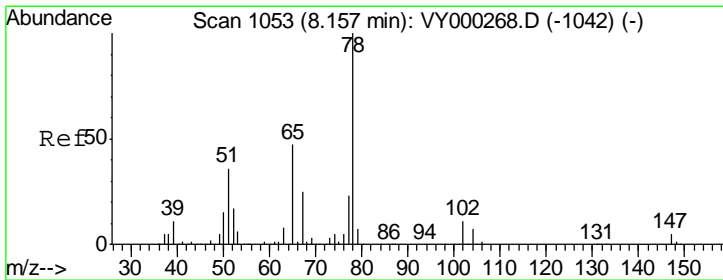
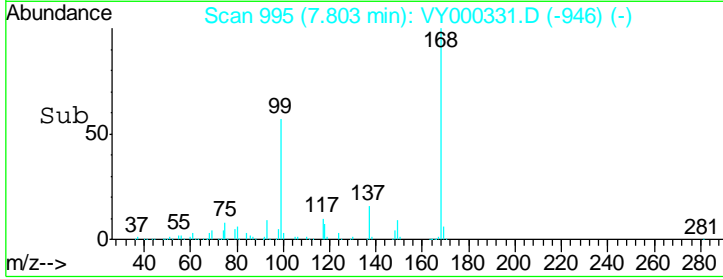
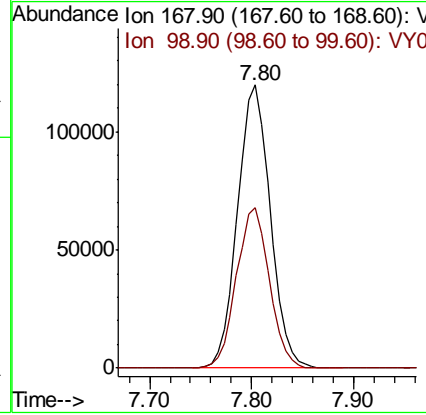
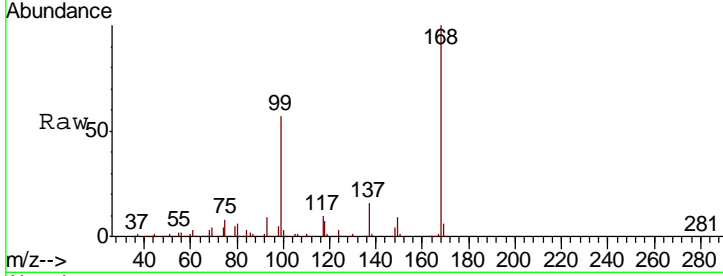




#1  
 Pentafluorobenzene  
 Concen: 50.000 ug/l  
 RT: 7.80 min Scan# 995  
 Delta R.T. -0.00 min  
 Lab File: VY000331.D  
 Acq: 16 Oct 2019 15:51

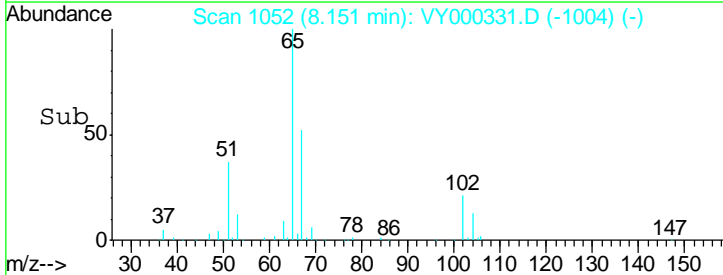
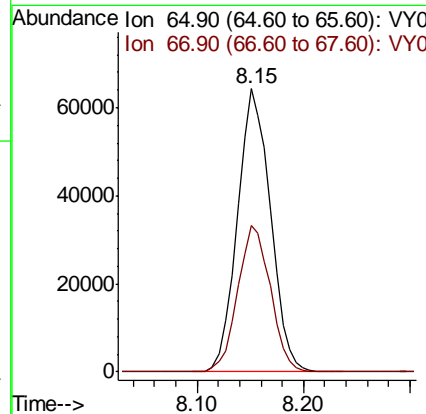
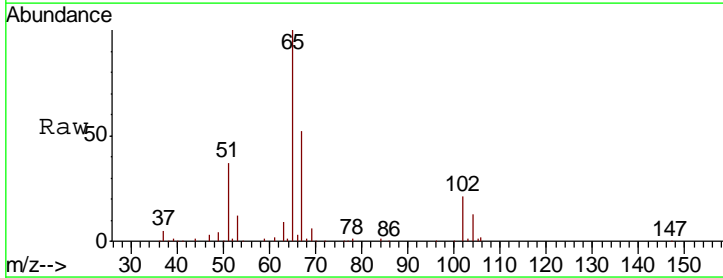
Instrument :  
 MSVOA\_Y  
 ClientSampled :  
 T-15-E1-(20)

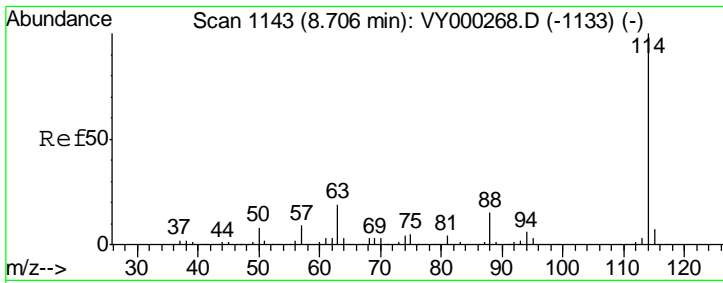
Tgt Ion: 168 Resp: 266793  
 Ion Ratio Lower Upper  
 168 100  
 99 56.9 46.6 69.8



#33  
 1,2-Dichloroethane-d4  
 Concen: 49.713 ug/l  
 RT: 8.15 min Scan# 1052  
 Delta R.T. -0.01 min  
 Lab File: VY000331.D  
 Acq: 16 Oct 2019 15:51

Tgt Ion: 65 Resp: 139905  
 Ion Ratio Lower Upper  
 65 100  
 67 51.2 0.0 109.4

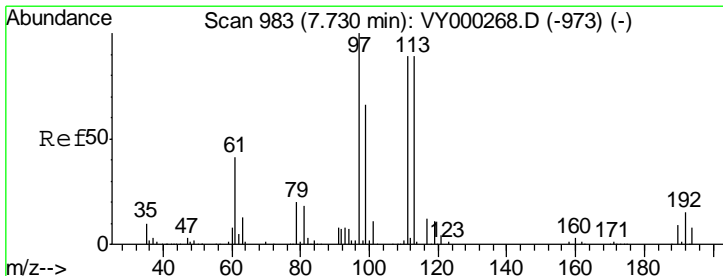
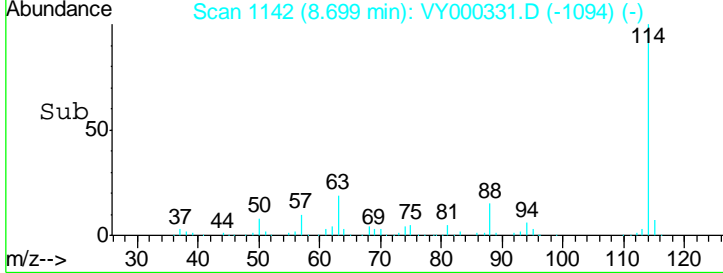
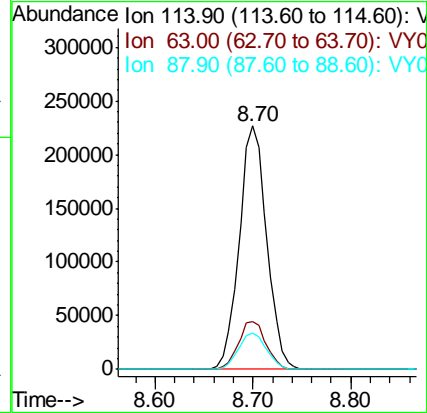
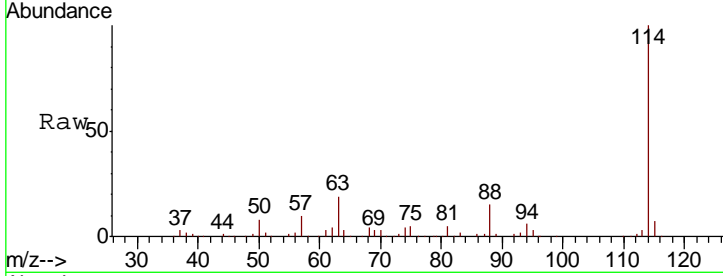




#34  
 1,4-Difluorobenzene  
 Concen: 50.000 ug/l  
 RT: 8.70 min Scan# 1142  
 Delta R.T. -0.01 min  
 Lab File: VY000331.D  
 Acq: 16 Oct 2019 15:51

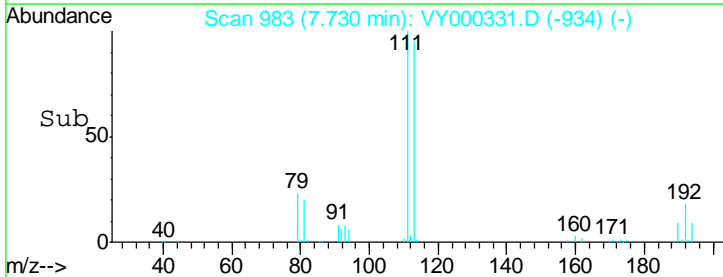
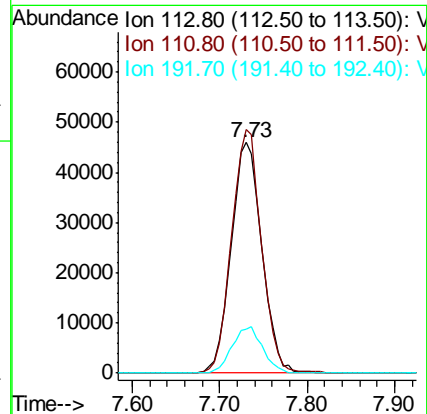
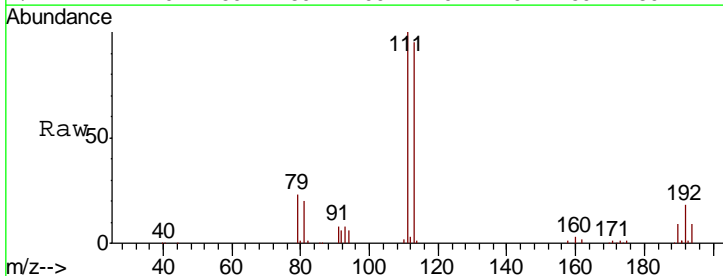
Instrument :  
 MSVOA\_Y  
 ClientSampled :  
 T-15-E1-(20)

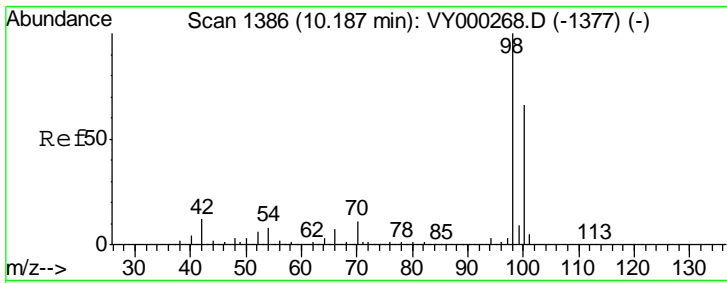
Tgt Ion	Resp	Lower	Upper
114	440581		
63	19.4	0.0	37.2
88	14.9	0.0	30.2



#35  
 Dibromofluoromethane  
 Concen: 42.190 ug/l  
 RT: 7.73 min Scan# 983  
 Delta R.T. 0.00 min  
 Lab File: VY000331.D  
 Acq: 16 Oct 2019 15:51

Tgt Ion	Resp	Lower	Upper
113	112126		
111	102.2	81.6	122.4
192	19.9	15.3	22.9

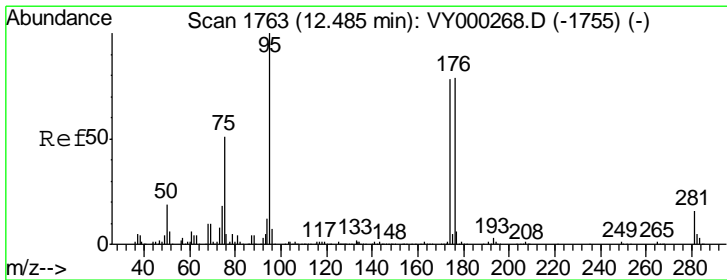
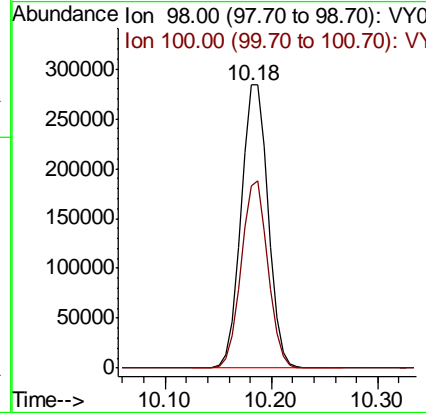
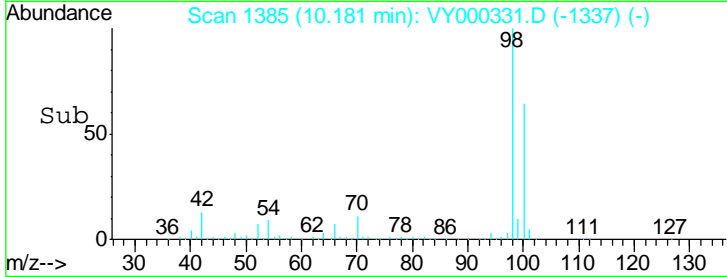
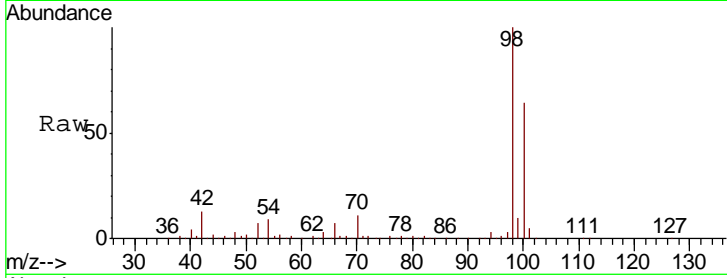




#50  
 Toluene-d8  
 Concen: 49.711 ug/l  
 RT: 10.18 min Scan# 1385  
 Delta R.T. -0.01 min  
 Lab File: VY000331.D  
 Acq: 16 Oct 2019 15:51

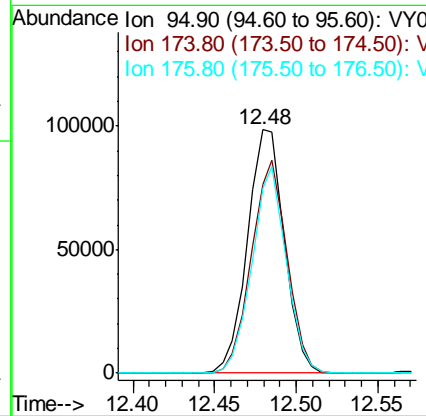
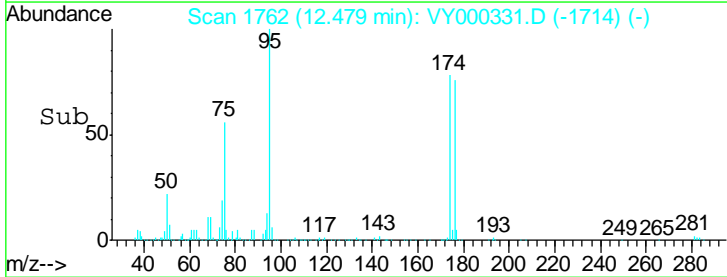
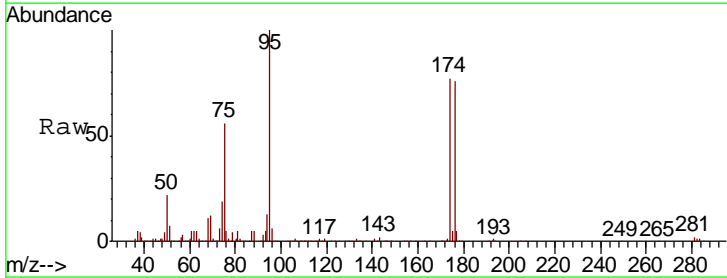
Instrument :  
 MSVOA\_Y  
 ClientSampled :  
 T-15-E1-(20)

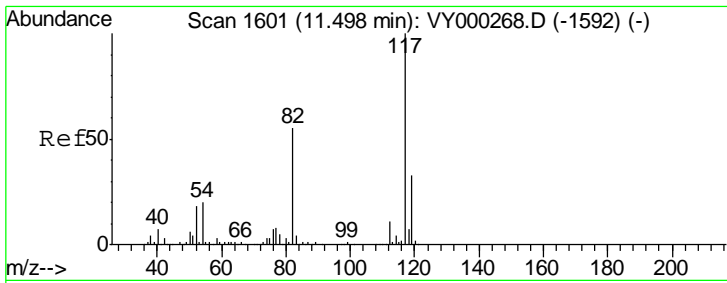
Tgt Ion: 98 Resp: 508209  
 Ion Ratio Lower Upper  
 98 100  
 100 65.3 52.8 79.2



#62  
 4-Bromofluorobenzene  
 Concen: 40.001 ug/l  
 RT: 12.48 min Scan# 1762  
 Delta R.T. -0.01 min  
 Lab File: VY000331.D  
 Acq: 16 Oct 2019 15:51

Tgt Ion: 95 Resp: 155360  
 Ion Ratio Lower Upper  
 95 100  
 174 84.4 0.0 159.6  
 176 79.1 0.0 153.8

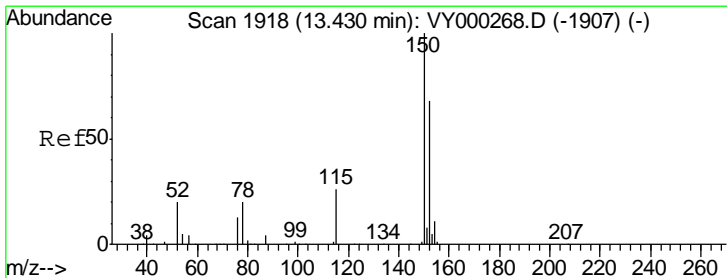
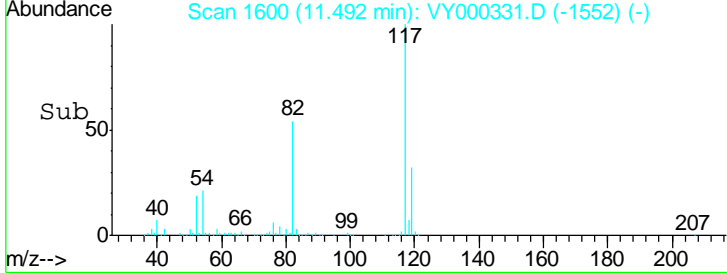
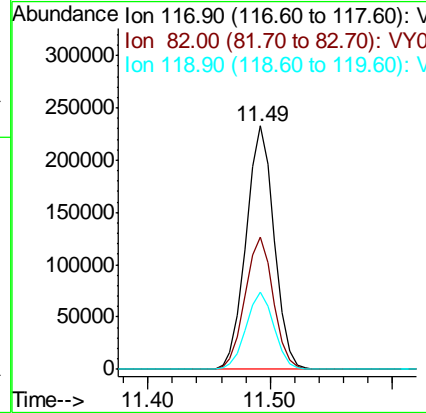
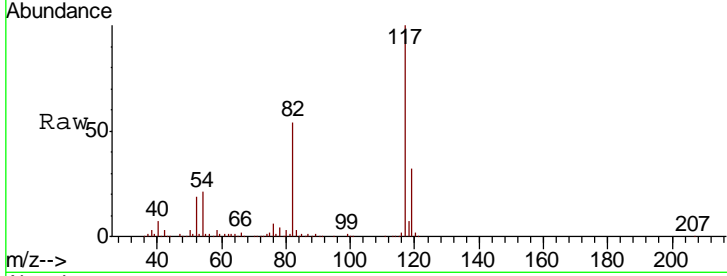




#63  
 Chlorobenzene-d5  
 Concen: 50.000 ug/l  
 RT: 11.49 min Scan# 1600  
 Delta R.T. -0.01 min  
 Lab File: VY000331.D  
 Acq: 16 Oct 2019 15:51

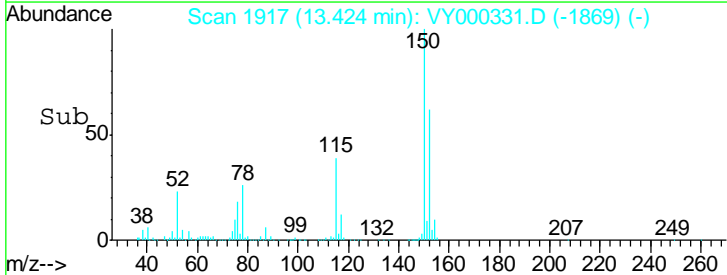
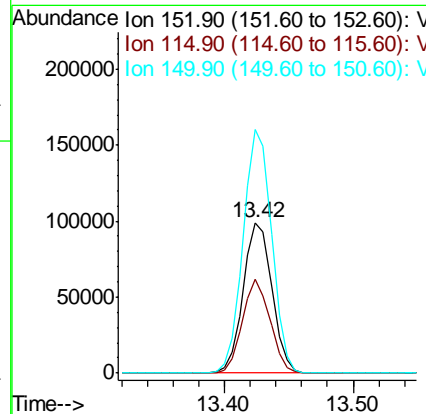
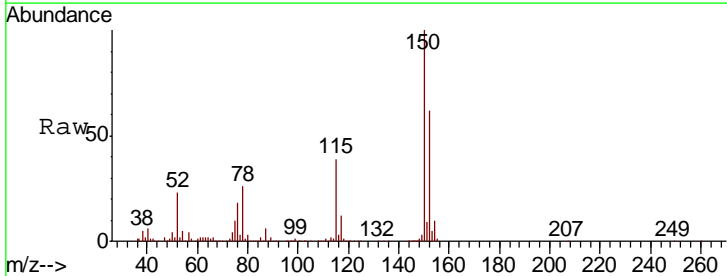
Instrument :  
 MSVOA\_Y  
 ClientSampled :  
 T-15-E1-(20)

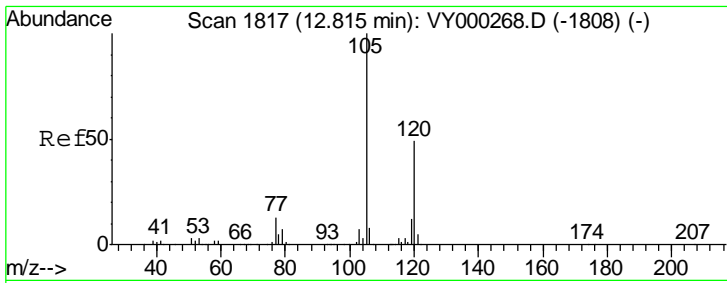
Tgt Ion	Resp	Lower	Upper
117	370110		
82	54.1	43.7	65.5
119	31.7	26.6	39.8



#72  
 1,4-Dichlorobenzene-d4  
 Concen: 50.000 ug/l  
 RT: 13.42 min Scan# 1917  
 Delta R.T. -0.01 min  
 Lab File: VY000331.D  
 Acq: 16 Oct 2019 15:51

Tgt Ion	Resp	Lower	Upper
152	152596		
115	60.2	29.3	88.0
150	160.7	0.0	348.4

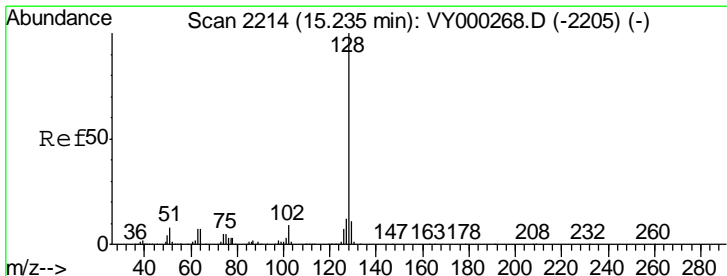
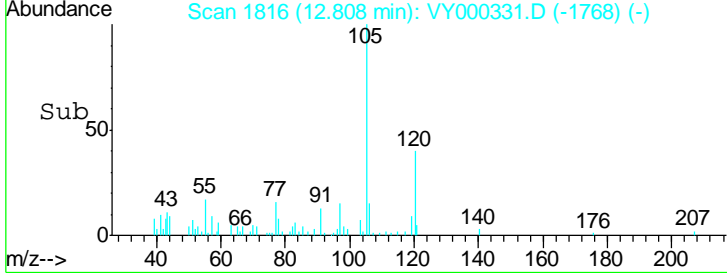
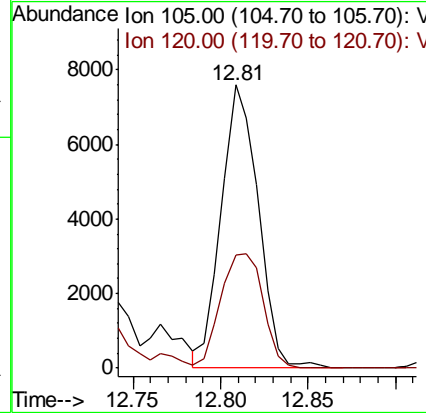
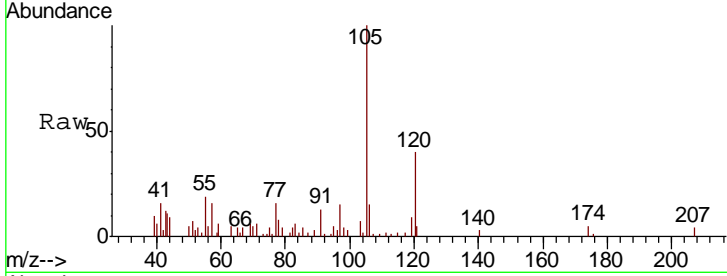




#80  
 1,3,5-Trimethylbenzene  
 Concen: 1.119 ug/l  
 RT: 12.81 min Scan# 1816  
 Delta R.T. -0.01 min  
 Lab File: VY000331.D  
 Acq: 16 Oct 2019 15:51

Instrument :  
 MSVOA\_Y  
 ClientSampled :  
 T-15-E1-(20)

Tgt Ion	Resp	Lower	Upper
105	11168		
120	46.3	24.9	74.8



#95  
 Naphthalene  
 Concen: 2.027 ug/l  
 RT: 15.23 min Scan# 2214  
 Delta R.T. -0.00 min  
 Lab File: VY000331.D  
 Acq: 16 Oct 2019 15:51

Tgt Ion	Resp	Lower	Upper
128	14866		
127	15.0	9.6	14.4#
129	12.8	8.7	13.1

