

Data Path : Z:\voasrv\HPCHEM1\MSVOA\_Y\Data\VY101724\  
 Data File : VY019923.D  
 Acq On : 17 Oct 2024 11:22  
 Operator : SY/MD  
 Sample : VY1017SBL01  
 Misc : 5.00g/5.0mL/MSVOA\_Y/SOIL  
 ALS Vial : 3 Sample Multiplier: 1

Instrument :  
 MSVOA\_Y  
 ClientSampleId :

Quant Time: Oct 18 01:37:45 2024  
 Quant Method : Z:\voasrv\HPCHEM1\MSVOA\_Y\methods\82Y100924S.M  
 Quant Title : SW846 8260  
 QLast Update : Wed Oct 16 05:44:48 2024  
 Response via : Initial Calibration

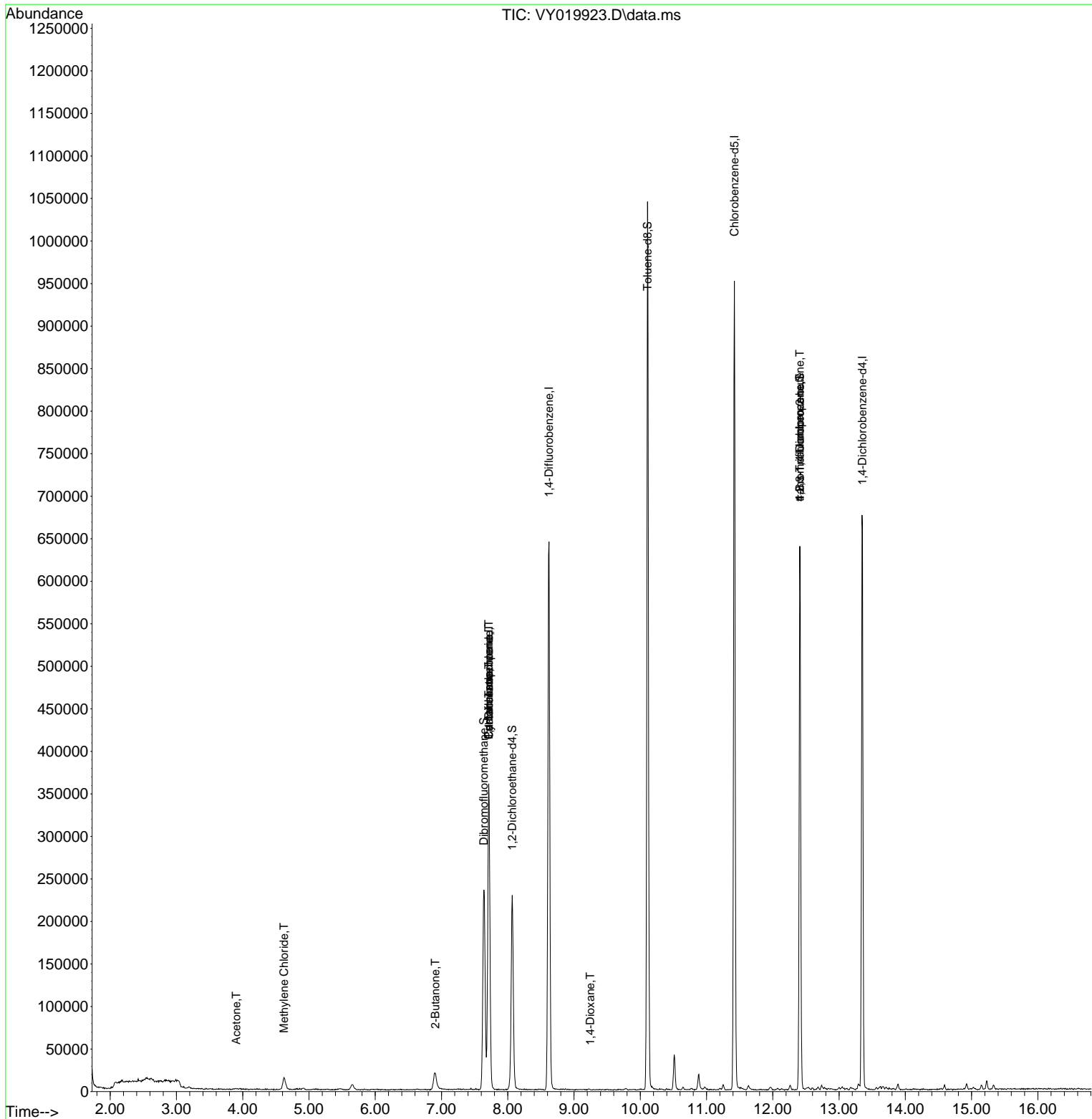
Compound	R.T.	QIon	Response	Conc	Units	Dev(Min)
-----						
Internal Standards						
1) Pentafluorobenzene	7.713	168	254001	50.000	ug/l	# 0.00
34) 1,4-Difluorobenzene	8.622	114	517570	50.000	ug/l	0.00
63) Chlorobenzene-d5	11.420	117	458264	50.000	ug/l	0.00
72) 1,4-Dichlorobenzene-d4	13.352	152	153421	50.000	ug/l	0.00
System Monitoring Compounds						
33) 1,2-Dichloroethane-d4	8.067	65	173097	55.347	ug/l	0.00
Spiked Amount	50.000	Range	50 - 163	Recovery	=	110.700%
35) Dibromofluoromethane	7.640	113	169607	49.660	ug/l	0.00
Spiked Amount	50.000	Range	54 - 147	Recovery	=	99.320%
50) Toluene-d8	10.109	98	638240	50.603	ug/l	0.00
Spiked Amount	50.000	Range	58 - 134	Recovery	=	101.200%
62) 4-Bromofluorobenzene	12.407	95	186582	40.941	ug/l	0.00
Spiked Amount	50.000	Range	29 - 146	Recovery	=	81.880%
Target Compounds						
						Qvalue
11) Tert butyl alcohol	4.878	59	272	Below Cal	#	88
16) Acetone	3.903	43	1373	1.686	ug/l #	74
20) Methylene Chloride	4.622	84	9355	2.341	ug/l #	80
25) 2-Butanone	6.908	43	1884	1.729	ug/l #	59
31) Cyclohexane	7.713	56	7289	1.395	ug/l #	23
36) 1,1-Dichloropropene	7.713	75	25174	5.116	ug/l #	48
38) Carbon Tetrachloride	7.713	117	27672	5.246	ug/l #	17
49) 1,4-Dioxane	9.243	88	42	1.843	ug/l #	20
76) 1,2,3-Trichloropropane	12.407	75	109787	36.529	ug/l #	100
81) trans-1,4-Dichloro-2-b...	12.407	75	109787	147.444	ug/l #	16
-----						

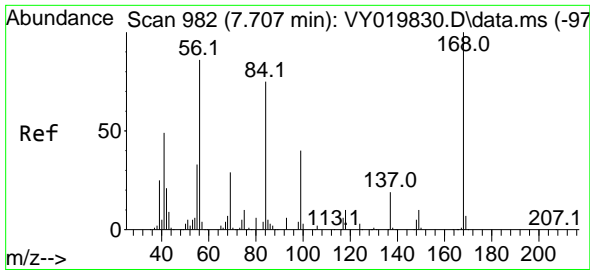
(#) = qualifier out of range (m) = manual integration (+) = signals summed

Data Path : Z:\voasrv\HPCHEM1\MSVOA\_Y\Data\VY101724\  
 Data File : VY019923.D  
 Acq On : 17 Oct 2024 11:22  
 Operator : SY/MD  
 Sample : VY1017SBL01  
 Misc : 5.00g/5.0mL/MSVOA\_Y/SOIL  
 ALS Vial : 3 Sample Multiplier: 1

Instrument :  
 MSVOA\_Y  
 ClientSampleId :

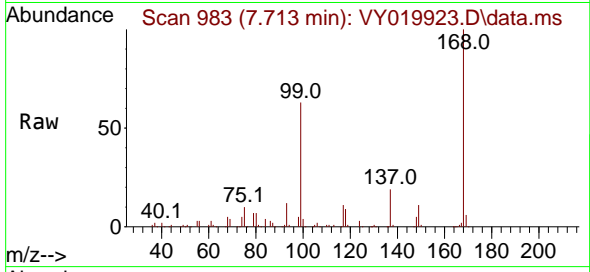
Quant Time: Oct 18 01:37:45 2024  
 Quant Method : Z:\voasrv\HPCHEM1\MSVOA\_Y\methods\82Y100924S.M  
 Quant Title : SW846 8260  
 QLast Update : Wed Oct 16 05:44:48 2024  
 Response via : Initial Calibration



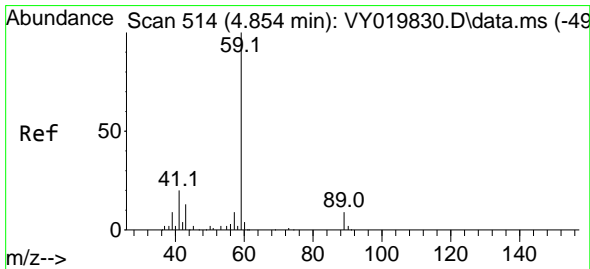
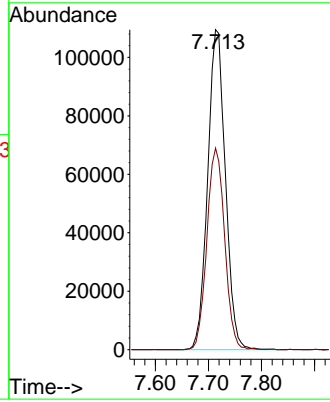
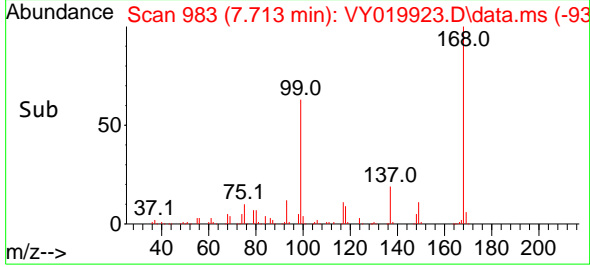


#1  
 Pentafluorobenzene  
 Concen: 50.000 ug/l  
 RT: 7.713 min Scan# 9  
 Delta R.T. 0.006 min  
 Lab File: VY019923.D  
 Acq: 17 Oct 2024 11:22

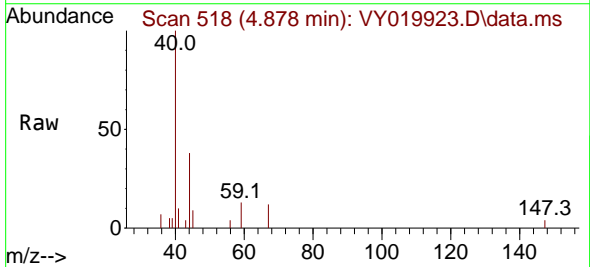
Instrument :  
 MSVOA\_Y  
 ClientSampleId :



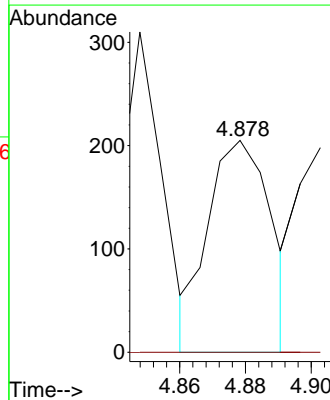
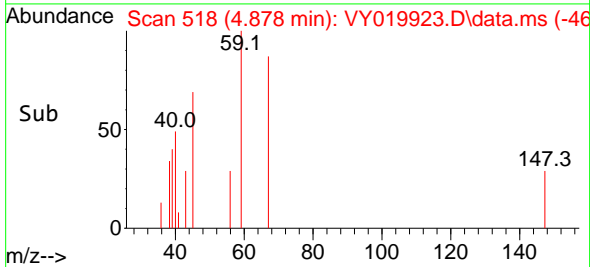
Tgt Ion:168 Resp: 254001  
 Ion Ratio Lower Upper  
 168 100  
 99 63.0 39.1 58.7#

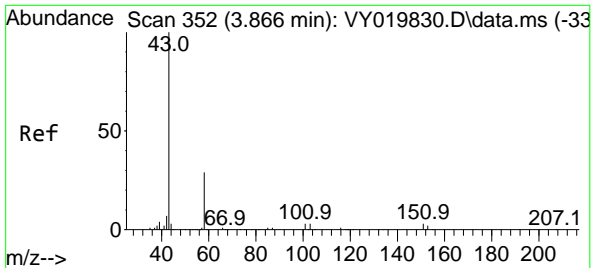


#11  
 Tert butyl alcohol  
 Concen: Below Cal  
 RT: 4.878 min Scan# 518  
 Delta R.T. 0.018 min  
 Lab File: VY019923.D  
 Acq: 17 Oct 2024 11:22



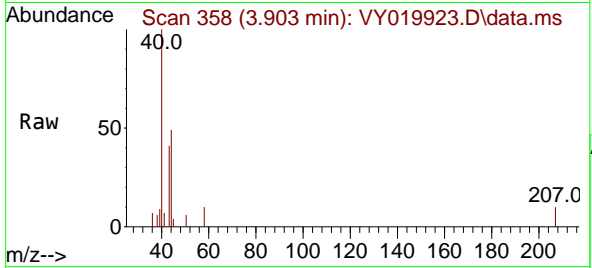
Tgt Ion: 59 Resp: 272  
 Ion Ratio Lower Upper  
 59 100  
 57 0.0 3.0 4.6#



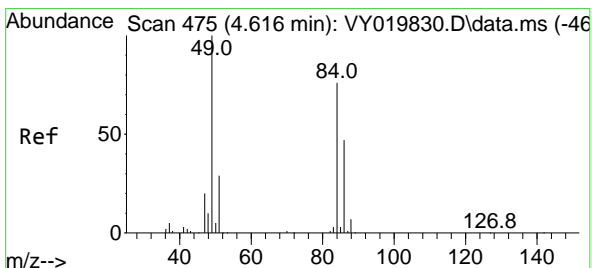
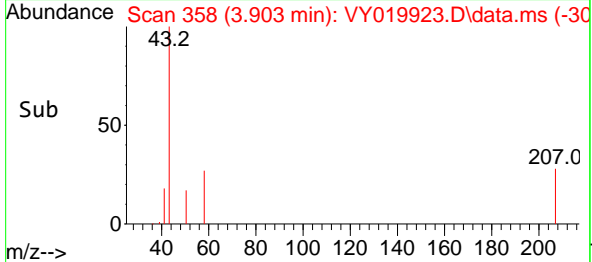
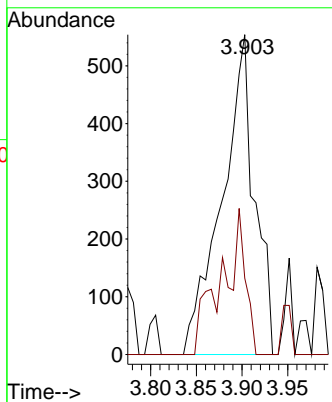


#16  
 Acetone  
 Concen: 1.686 ug/l  
 RT: 3.903 min Scan# 31  
 Delta R.T. 0.031 min  
 Lab File: VY019923.D  
 Acq: 17 Oct 2024 11:22

Instrument :  
 MSVOA\_Y  
 ClientSampleId :

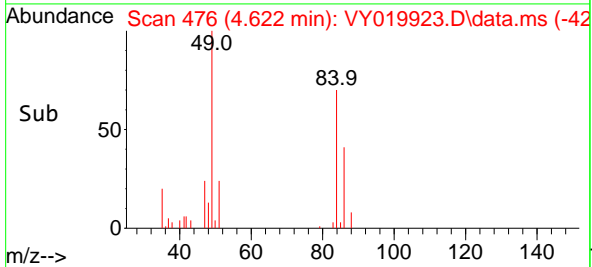
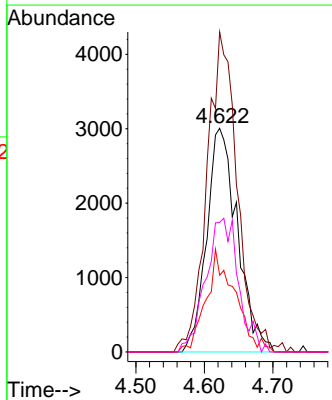
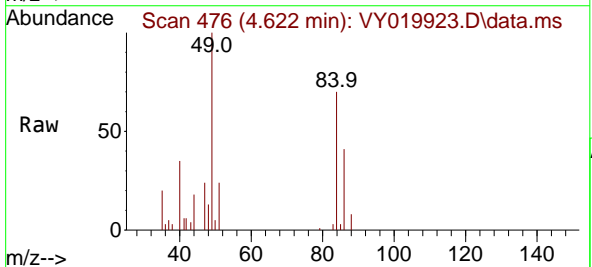


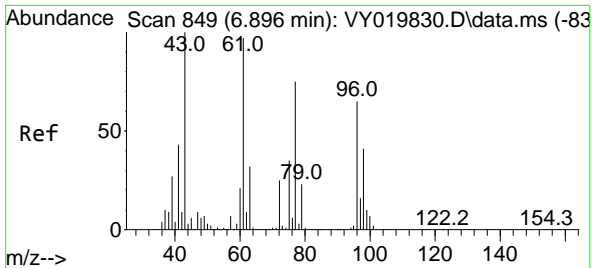
Tgt Ion: 43 Resp: 1373  
 Ion Ratio Lower Upper  
 43 100  
 58 23.8 31.7 47.5#



#20  
 Methylene Chloride  
 Concen: 2.341 ug/l  
 RT: 4.622 min Scan# 476  
 Delta R.T. 0.006 min  
 Lab File: VY019923.D  
 Acq: 17 Oct 2024 11:22

Tgt Ion: 84 Resp: 9355  
 Ion Ratio Lower Upper  
 84 100  
 49 140.7 84.4 126.6#  
 51 34.3 26.0 39.0  
 86 57.9 49.5 74.3

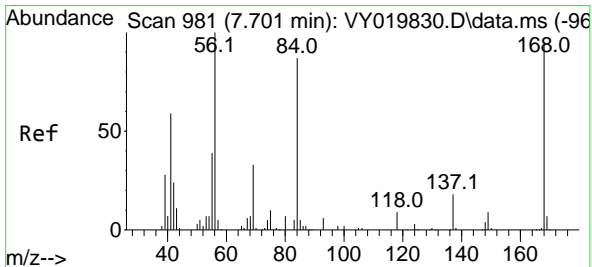
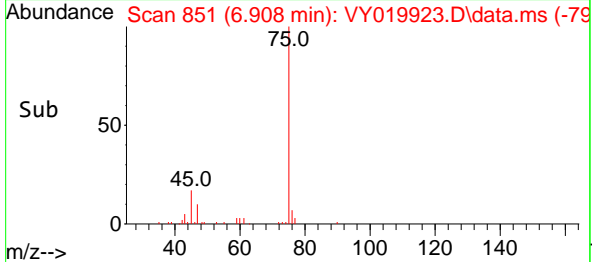
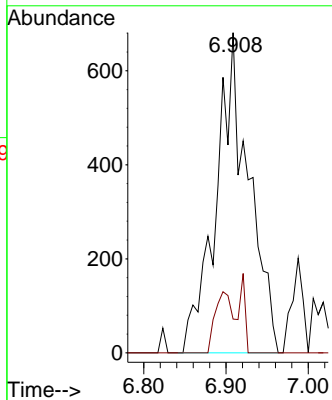
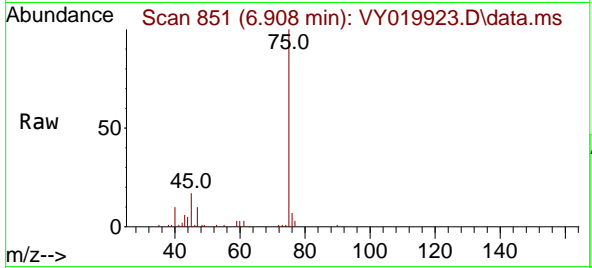




#25  
 2-Butanone  
 Concen: 1.729 ug/l  
 RT: 6.908 min Scan# 81  
 Delta R.T. 0.018 min  
 Lab File: VY019923.D  
 Acq: 17 Oct 2024 11:22

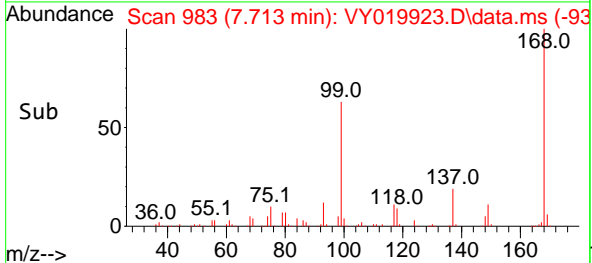
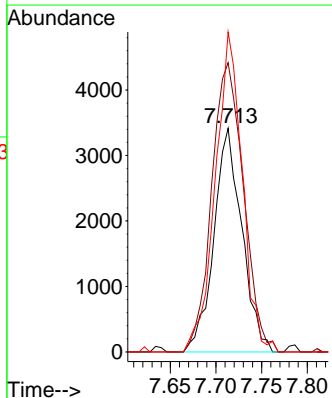
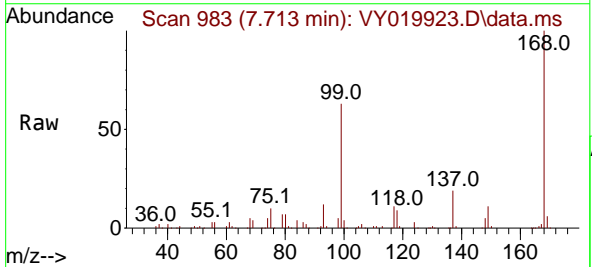
Instrument :  
 MSVOA\_Y  
 ClientSampleId :

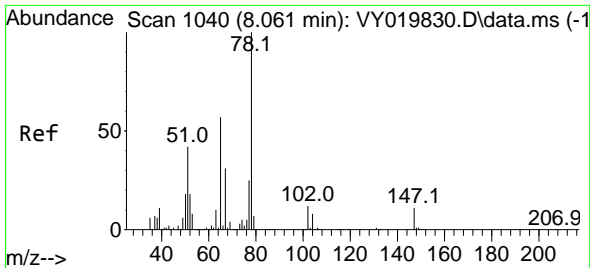
Tgt Ion: 43 Resp: 1884  
 Ion Ratio Lower Upper  
 43 100  
 72 10.6 27.3 40.9#



#31  
 Cyclohexane  
 Concen: 1.395 ug/l  
 RT: 7.713 min Scan# 983  
 Delta R.T. 0.012 min  
 Lab File: VY019923.D  
 Acq: 17 Oct 2024 11:22

Tgt Ion: 56 Resp: 7289  
 Ion Ratio Lower Upper  
 56 100  
 69 129.3 28.7 43.1#  
 84 143.1 77.7 116.5#

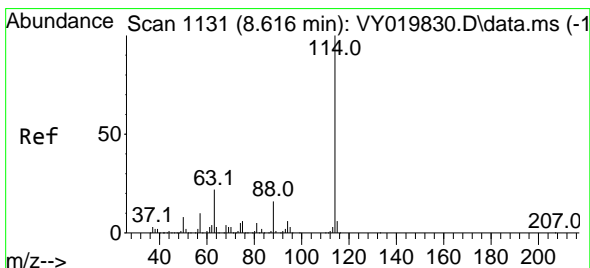
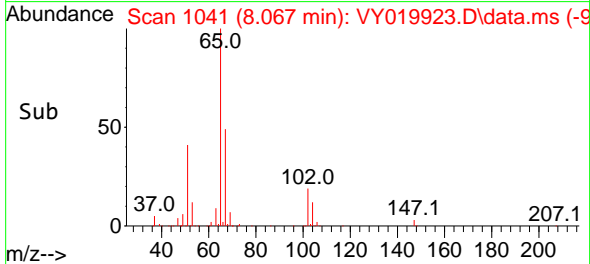
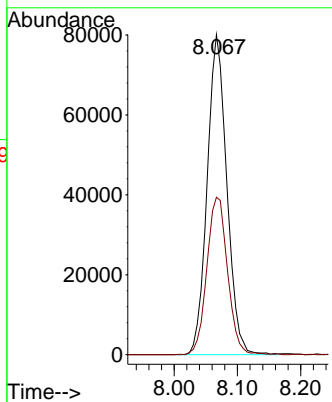
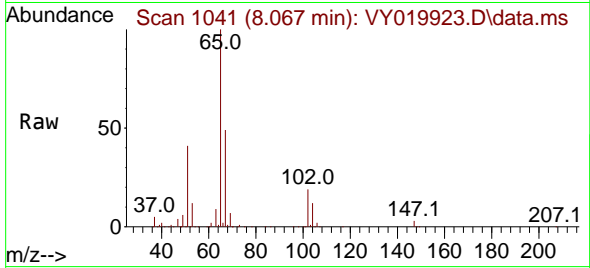




#33  
 1,2-Dichloroethane-d4  
 Concen: 55.347 ug/l  
 RT: 8.067 min Scan# 1041  
 Delta R.T. 0.006 min  
 Lab File: VY019923.D  
 Acq: 17 Oct 2024 11:22

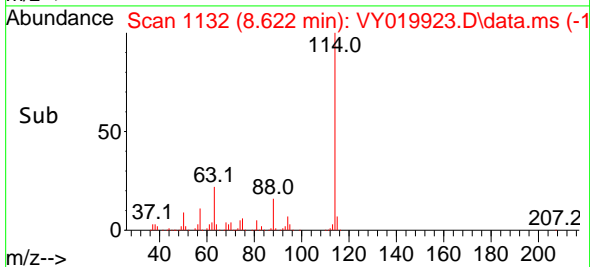
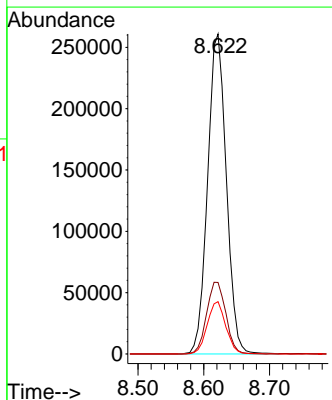
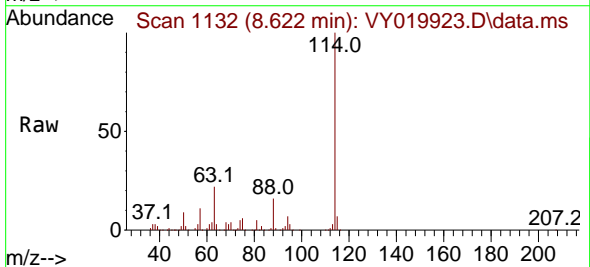
Instrument :  
 MSVOA\_Y  
 ClientSampleId :

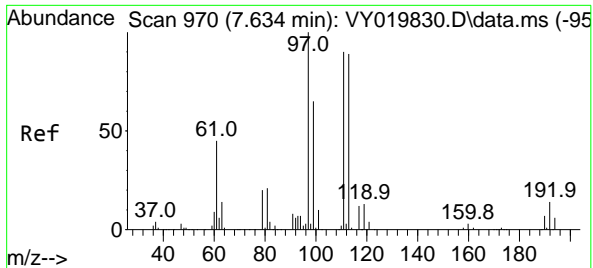
Tgt Ion: 65 Resp: 173097  
 Ion Ratio Lower Upper  
 65 100  
 67 51.9 0.0 109.6



#34  
 1,4-Difluorobenzene  
 Concen: 50.000 ug/l  
 RT: 8.622 min Scan# 1132  
 Delta R.T. 0.006 min  
 Lab File: VY019923.D  
 Acq: 17 Oct 2024 11:22

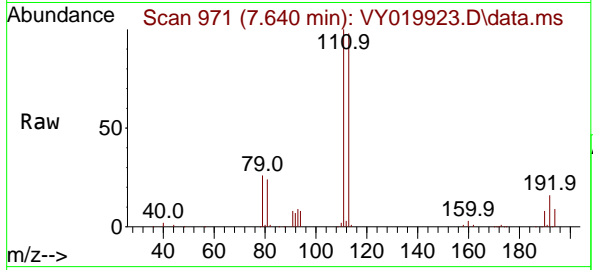
Tgt Ion:114 Resp: 517570  
 Ion Ratio Lower Upper  
 114 100  
 63 22.4 0.0 35.0  
 88 16.4 0.0 27.2





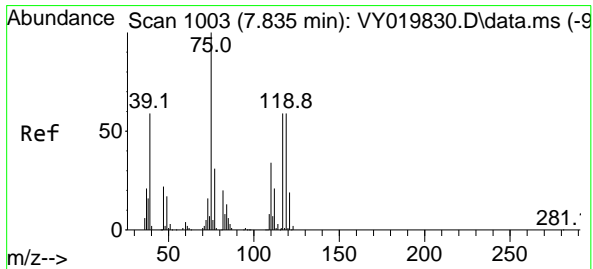
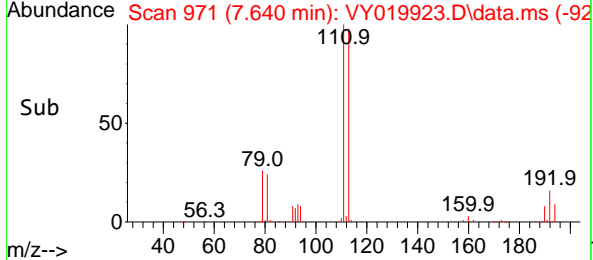
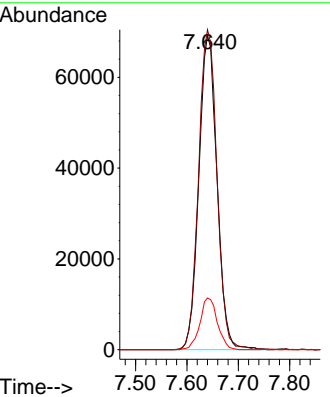
#35  
 Dibromofluoromethane  
 Concen: 49.660 ug/l  
 RT: 7.640 min Scan# 91  
 Delta R.T. 0.006 min  
 Lab File: VY019923.D  
 Acq: 17 Oct 2024 11:22

Instrument : MSVOA\_Y  
 ClientSampleId :

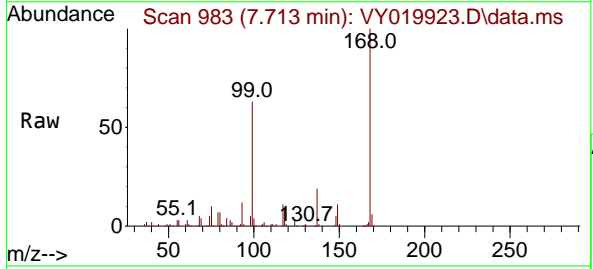


Tgt Ion: 113 Resp: 169607

Ion	Ratio	Lower	Upper
113	100		
111	103.0	82.2	123.4
192	15.9	15.9	23.9#

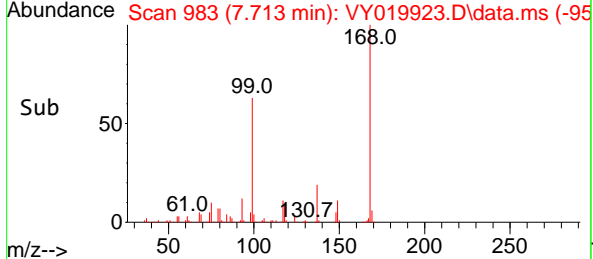
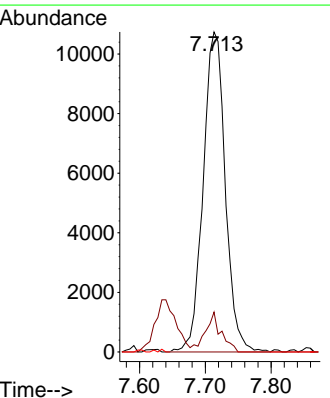


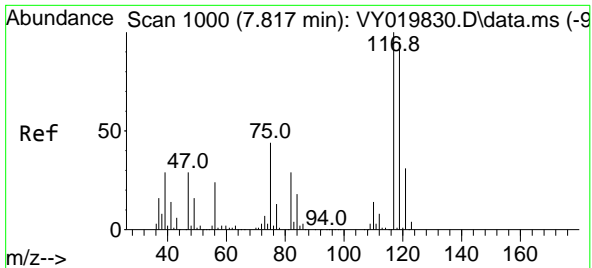
#36  
 1,1-Dichloropropene  
 Concen: 5.116 ug/l  
 RT: 7.713 min Scan# 983  
 Delta R.T. -0.122 min  
 Lab File: VY019923.D  
 Acq: 17 Oct 2024 11:22



Tgt Ion: 75 Resp: 25174

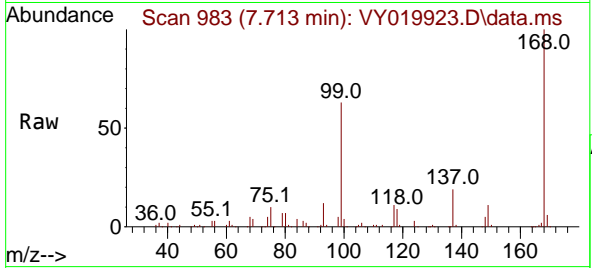
Ion	Ratio	Lower	Upper
75	100		
110	8.9	19.0	57.0#
77	0.0	25.3	37.9#



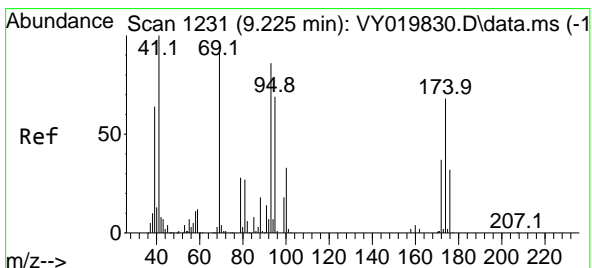
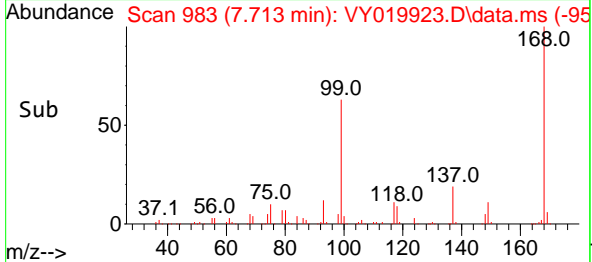
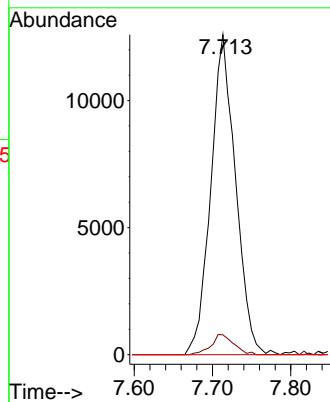


#38  
 Carbon Tetrachloride  
 Concen: 5.246 ug/l  
 RT: 7.713 min Scan# 91  
 Delta R.T. -0.103 min  
 Lab File: VY019923.D  
 Acq: 17 Oct 2024 11:22

Instrument :  
 MSVOA\_Y  
 ClientSampleId :

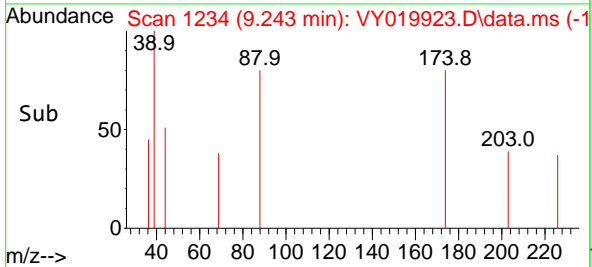
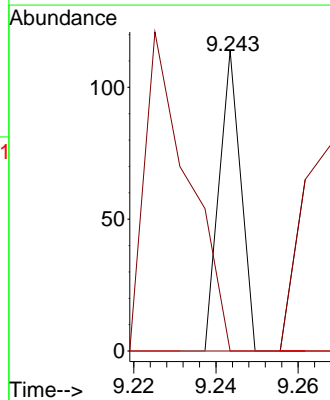
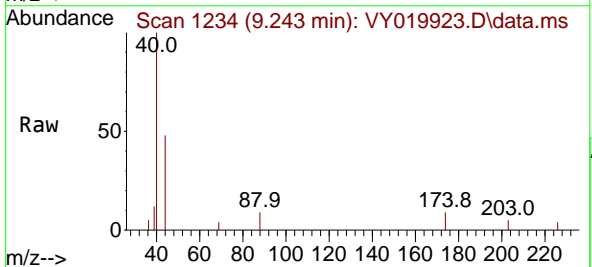


Tgt Ion: 117 Resp: 27672  
 Ion Ratio Lower Upper  
 117 100  
 119 6.2 75.8 113.6#  
 121 0.0 24.0 36.0#

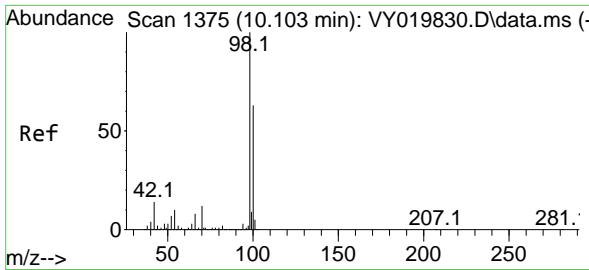


#49  
 1,4-Dioxane  
 Concen: 1.843 ug/l  
 RT: 9.243 min Scan# 1234  
 Delta R.T. 0.012 min  
 Lab File: VY019923.D  
 Acq: 17 Oct 2024 11:22

Tgt Ion: 88 Resp: 42  
 Ion Ratio Lower Upper  
 88 100  
 43 214.3 0.0 0.0#  
 58 0.0 49.3 73.9#

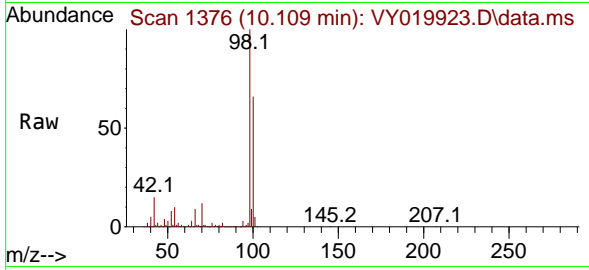




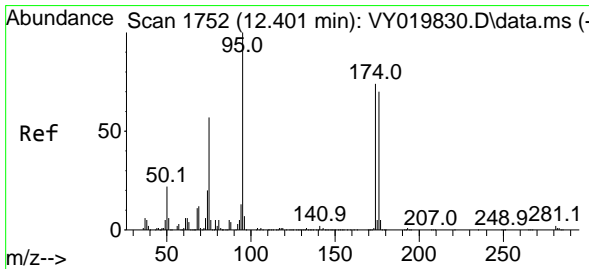
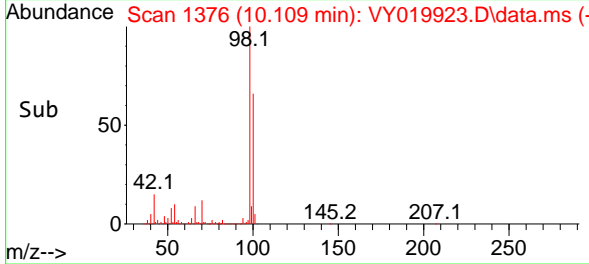
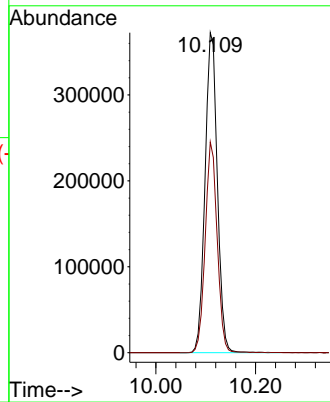


#50  
 Toluene-d8  
 Concen: 50.603 ug/l  
 RT: 10.109 min Scan# 11  
 Delta R.T. 0.000 min  
 Lab File: VY019923.D  
 Acq: 17 Oct 2024 11:22

Instrument :  
 MSVOA\_Y  
 ClientSampleId :

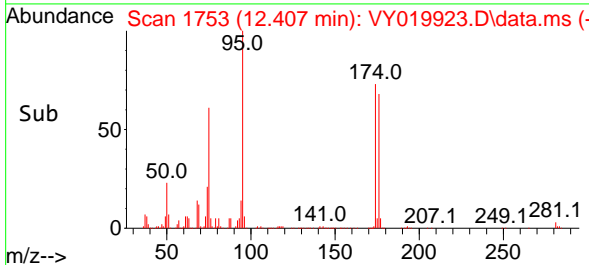
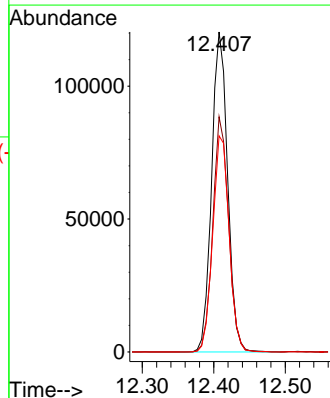
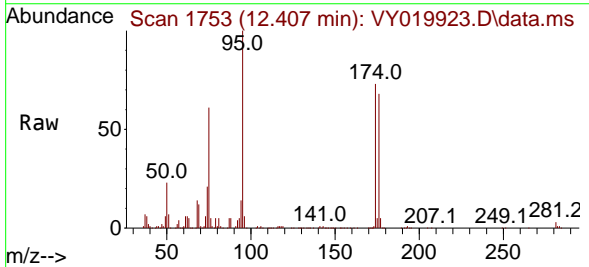


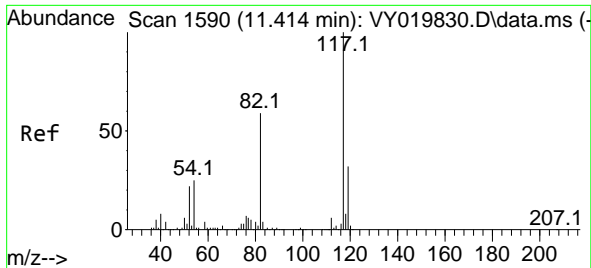
Tgt Ion: 98 Resp: 638240  
 Ion Ratio Lower Upper  
 98 100  
 100 64.0 52.0 78.0



#62  
 4-Bromofluorobenzene  
 Concen: 40.941 ug/l  
 RT: 12.407 min Scan# 1753  
 Delta R.T. 0.000 min  
 Lab File: VY019923.D  
 Acq: 17 Oct 2024 11:22

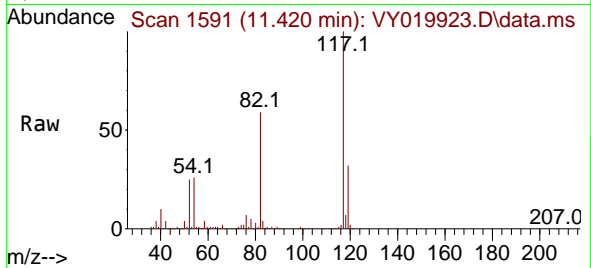
Tgt Ion: 95 Resp: 186582  
 Ion Ratio Lower Upper  
 95 100  
 174 72.6 0.0 175.6  
 176 69.4 0.0 171.4





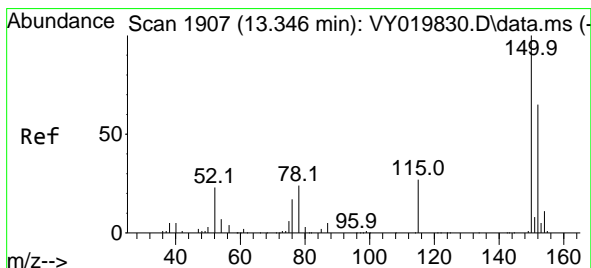
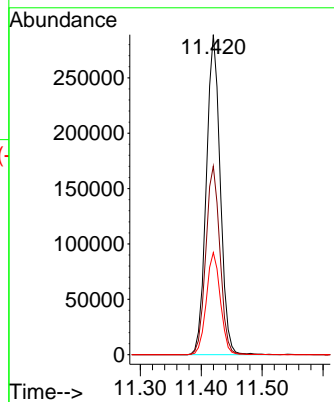
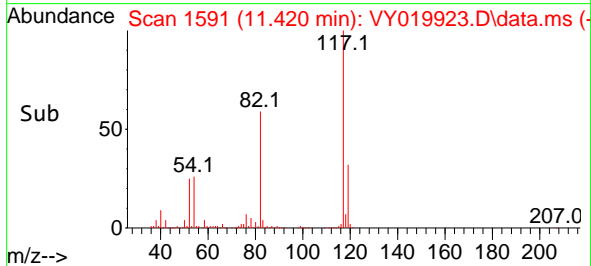
#63  
 Chlorobenzene-d5  
 Concen: 50.000 ug/l  
 RT: 11.420 min Scan# 11  
 Delta R.T. 0.000 min  
 Lab File: VY019923.D  
 Acq: 17 Oct 2024 11:22

Instrument :  
 MSVOA\_Y  
 ClientSampleId :

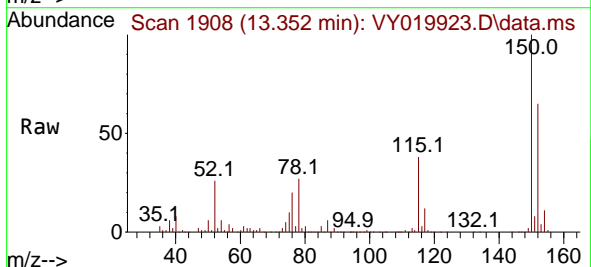


Tgt Ion:117 Resp: 458264

Ion	Ratio	Lower	Upper
117	100		
82	58.9	42.4	63.6
119	31.9	25.9	38.9

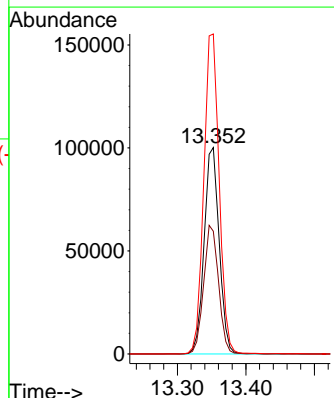
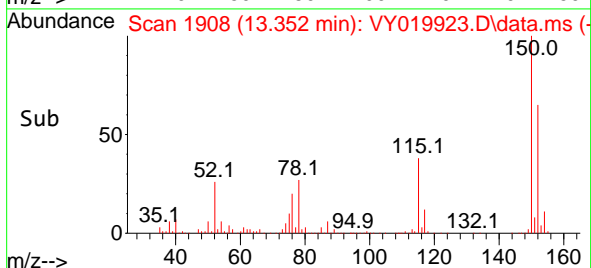


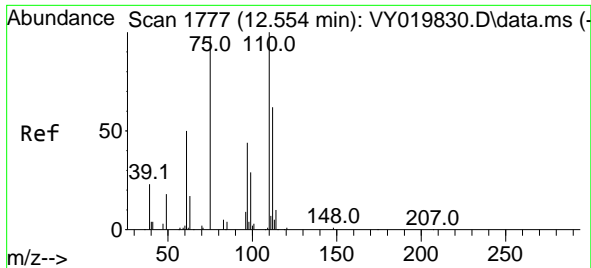
#72  
 1,4-Dichlorobenzene-d4  
 Concen: 50.000 ug/l  
 RT: 13.352 min Scan# 1908  
 Delta R.T. 0.006 min  
 Lab File: VY019923.D  
 Acq: 17 Oct 2024 11:22



Tgt Ion:152 Resp: 153421

Ion	Ratio	Lower	Upper
152	100		
115	61.7	28.2	84.7
150	158.2	0.0	345.6

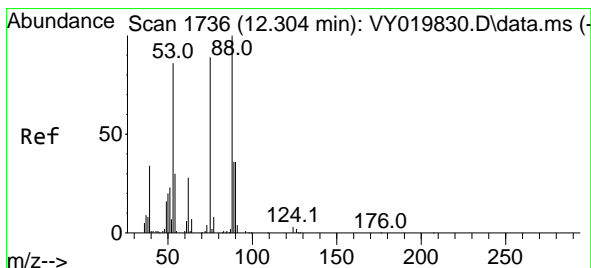
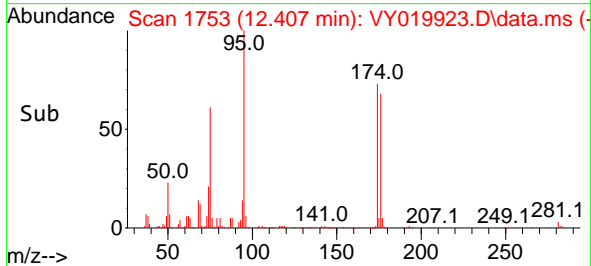
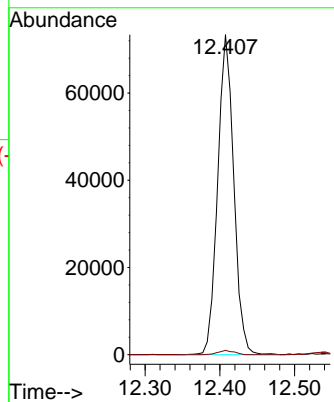
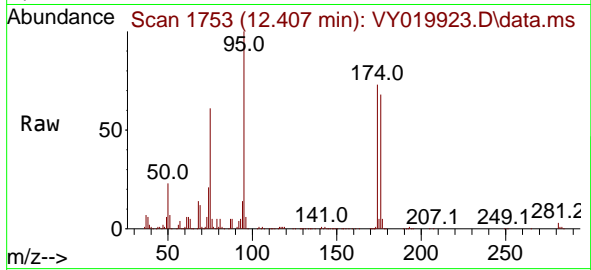




#76  
 1,2,3-Trichloropropane  
 Concen: 36.529 ug/l  
 RT: 12.407 min Scan# 1753  
 Delta R.T. -0.152 min  
 Lab File: VY019923.D  
 Acq: 17 Oct 2024 11:22

Instrument :  
 MSVOA\_Y  
 ClientSampleId :

Tgt Ion: 75 Resp: 109787  
 Ion Ratio Lower Upper  
 75 100  
 77 1.3 0.0 0.0#



#81  
 trans-1,4-Dichloro-2-butene  
 Concen: 147.444 ug/l  
 RT: 12.407 min Scan# 1753  
 Delta R.T. 0.104 min  
 Lab File: VY019923.D  
 Acq: 17 Oct 2024 11:22

Tgt Ion: 75 Resp: 109787  
 Ion Ratio Lower Upper  
 75 100  
 53 0.1 66.8 100.2#  
 89 0.0 35.8 53.6#

