

Data Path : Z:\voasrv\HPCHEM1\MSVOA_Y\Data\VY101724\
 Data File : VY019935.D
 Acq On : 17 Oct 2024 16:24
 Operator : SY/MD
 Sample : P4417-07
 Misc : 5.04g/5.0mL/MSVOA_Y/SOIL/A
 ALS Vial : 15 Sample Multiplier: 1

Instrument :
 MSVOA_Y
 ClientSampleId :

Quant Time: Oct 18 01:43:57 2024
 Quant Method : Z:\voasrv\HPCHEM1\MSVOA_Y\methods\82Y100924S.M
 Quant Title : SW846 8260
 QLast Update : Wed Oct 16 05:44:48 2024
 Response via : Initial Calibration

Compound	R.T.	QIon	Response	Conc	Units	Dev(Min)

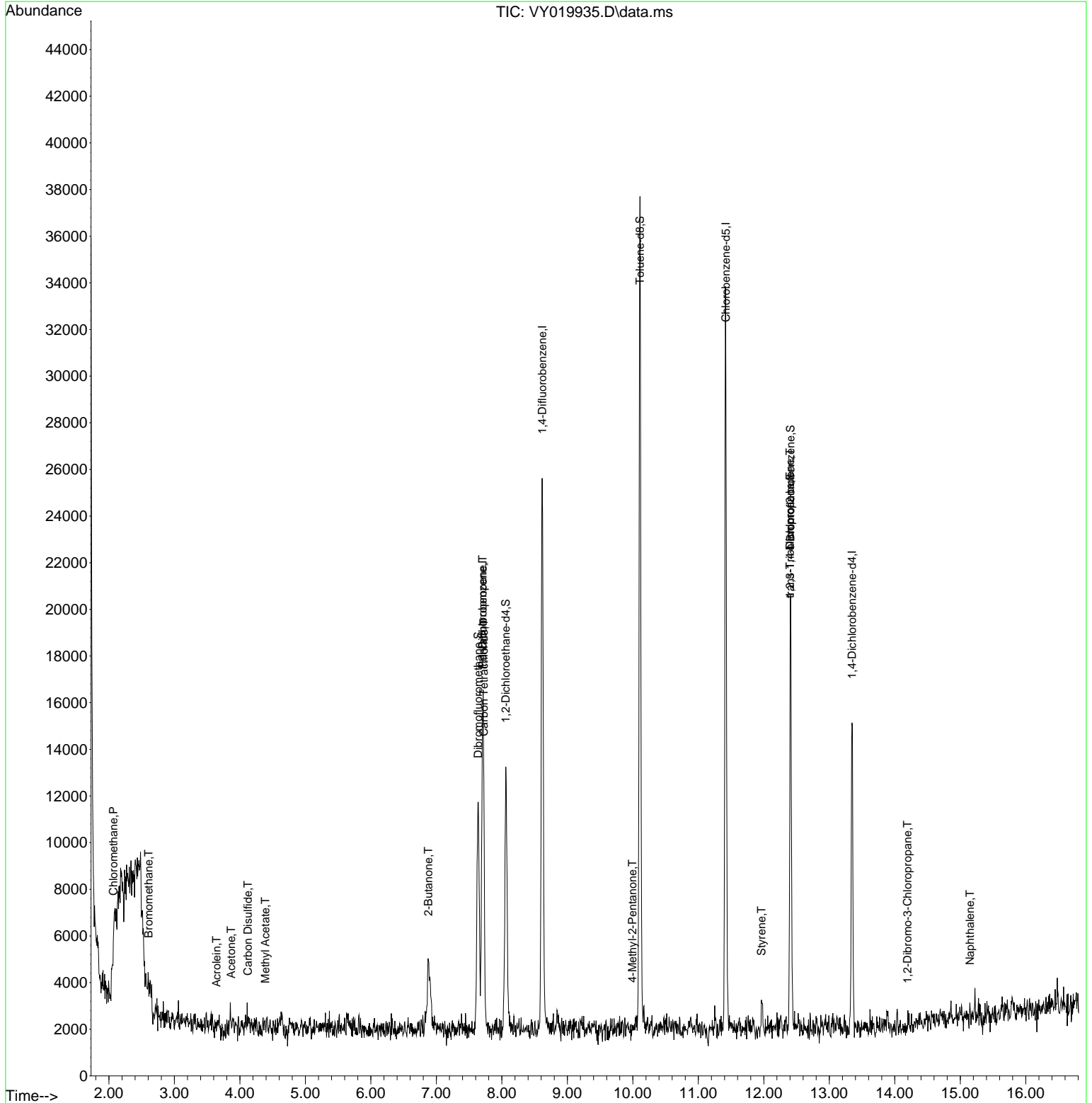
Internal Standards						
1) Pentafluorobenzene	7.707	168	11420	50.000	ug/l	0.00
34) 1,4-Difluorobenzene	8.615	114	19966	50.000	ug/l	0.00
63) Chlorobenzene-d5	11.420	117	16043	50.000	ug/l	0.00
72) 1,4-Dichlorobenzene-d4	13.346	152	3223	50.000	ug/l	0.00
System Monitoring Compounds						
33) 1,2-Dichloroethane-d4	8.061	65	8522	60.606	ug/l	0.00
Spiked Amount	50.000	Range	50 - 163	Recovery	=	121.220%
35) Dibromofluoromethane	7.640	113	7182	54.511	ug/l	0.00
Spiked Amount	50.000	Range	54 - 147	Recovery	=	109.020%
50) Toluene-d8	10.109	98	23132	47.543	ug/l	0.00
Spiked Amount	50.000	Range	58 - 134	Recovery	=	95.080%
62) 4-Bromofluorobenzene	12.407	95	5701	32.428	ug/l	0.00
Spiked Amount	50.000	Range	29 - 146	Recovery	=	64.860%
Target Compounds						
						Qvalue
3) Chloromethane	2.068	50	145	1.048	ug/l #	43
5) Bromomethane	2.604	94	172	1.785	ug/l	95
13) Acrolein	3.641	56	45	4.355	ug/l #	67
16) Acetone	3.866	43	518	14.151	ug/l #	36
17) Carbon Disulfide	4.122	76	694	2.113	ug/l #	76
18) Methyl Acetate	4.391	43	135	1.712	ug/l #	46
20) Methylene Chloride	4.610	84	92	Below Cal	#	18
25) 2-Butanone	6.878	43	125	2.551	ug/l #	41
36) 1,1-Dichloropropene	7.707	75	1044	5.500	ug/l #	45
38) Carbon Tetrachloride	7.725	117	1145	5.627	ug/l #	13
51) 4-Methyl-2-Pentanone	9.993	43	120	1.166	ug/l #	31
70) Styrene	11.962	104	569	1.426	ug/l #	78
76) 1,2,3-Trichloropropane	12.401	75	3656	57.905	ug/l #	100
81) trans-1,4-Dichloro-2-b...	12.401	75	3656	233.725	ug/l #	16
92) 1,2-Dibromo-3-Chloropr...	14.194	75	21	2.732	ug/l #	26
95) Naphthalene	15.151	128	123	1.139	ug/l #	69

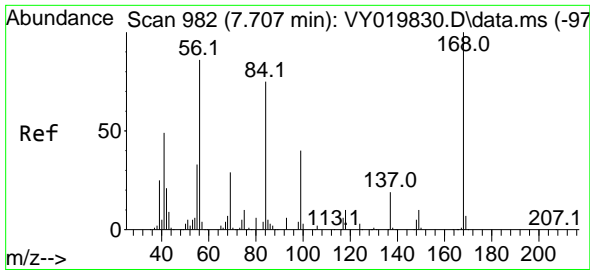
(#) = qualifier out of range (m) = manual integration (+) = signals summed

Data Path : Z:\voasrv\HPCHEM1\MSVOA_Y\Data\VY101724\
 Data File : VY019935.D
 Acq On : 17 Oct 2024 16:24
 Operator : SY/MD
 Sample : P4417-07
 Misc : 5.04g/5.0mL/MSVOA_Y/SOIL/A
 ALS Vial : 15 Sample Multiplier: 1

Instrument :
 MSVOA_Y
 ClientSampleId :

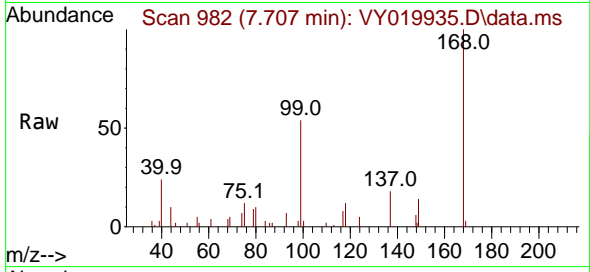
Quant Time: Oct 18 01:43:57 2024
 Quant Method : Z:\voasrv\HPCHEM1\MSVOA_Y\methods\82Y100924S.M
 Quant Title : SW846 8260
 QLast Update : Wed Oct 16 05:44:48 2024
 Response via : Initial Calibration



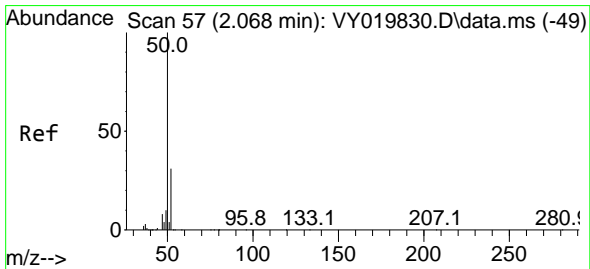
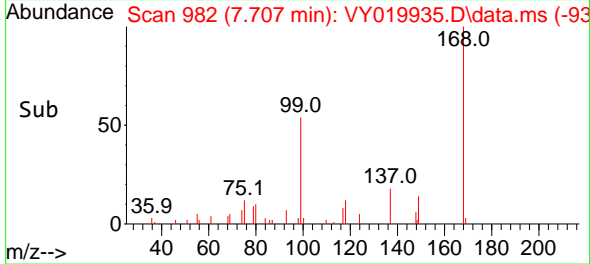
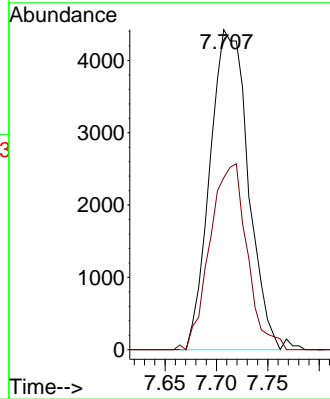


#1
 Pentafluorobenzene
 Concen: 50.000 ug/l
 RT: 7.707 min Scan# 99
 Delta R.T. 0.000 min
 Lab File: VY019935.D
 Acq: 17 Oct 2024 16:24

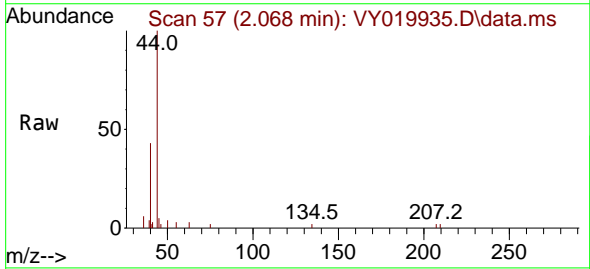
Instrument :
 MSVOA_Y
 ClientSampleId :



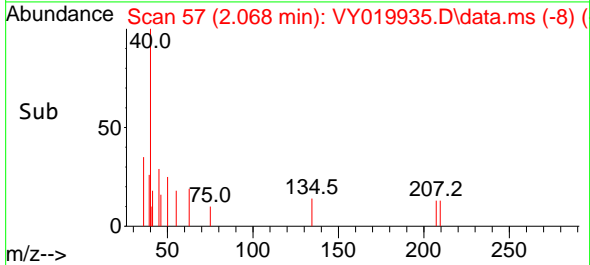
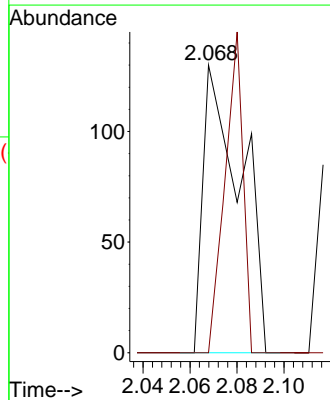
Tgt Ion:168 Resp: 11420
 Ion Ratio Lower Upper
 168 100
 99 52.2 39.1 58.7

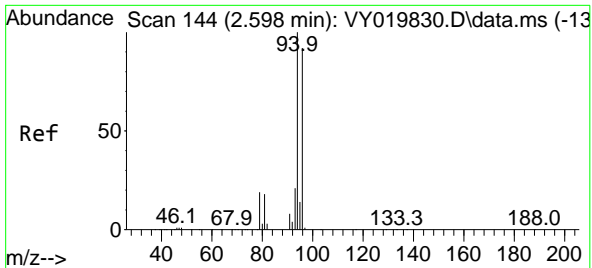


#3
 Chloromethane
 Concen: 1.048 ug/l
 RT: 2.068 min Scan# 57
 Delta R.T. 0.000 min
 Lab File: VY019935.D
 Acq: 17 Oct 2024 16:24



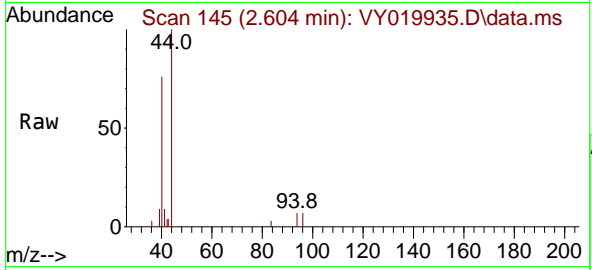
Tgt Ion: 50 Resp: 145
 Ion Ratio Lower Upper
 50 100
 52 0.0 25.6 38.4#



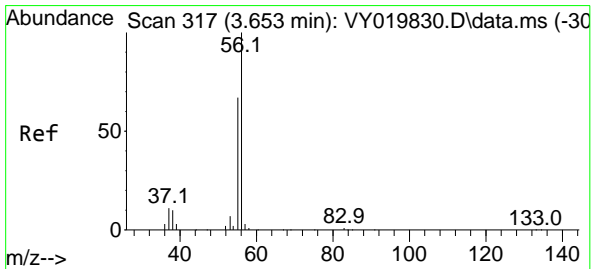
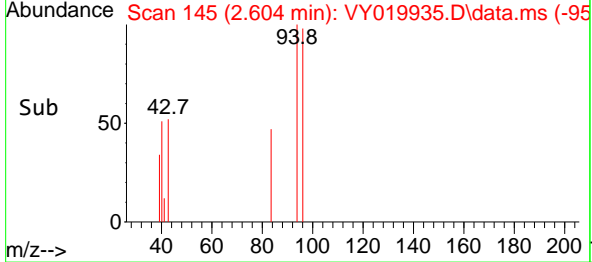
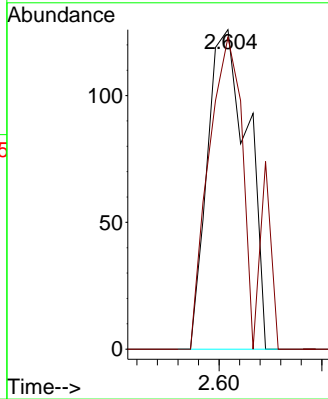


#5
 Bromomethane
 Concen: 1.785 ug/l
 RT: 2.604 min Scan# 14
 Delta R.T. 0.006 min
 Lab File: VY019935.D
 Acq: 17 Oct 2024 16:24

Instrument :
 MSVOA_Y
 ClientSampleId :

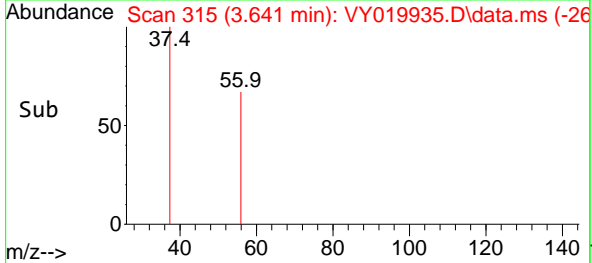
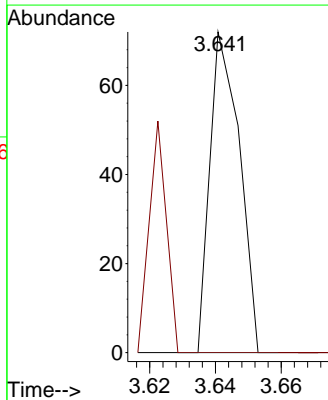
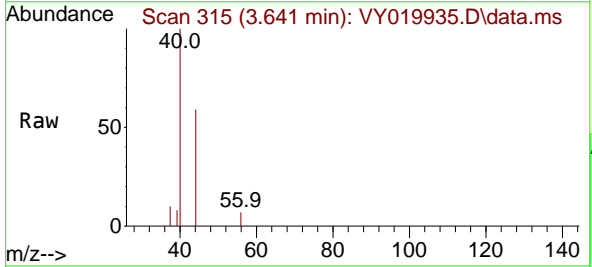


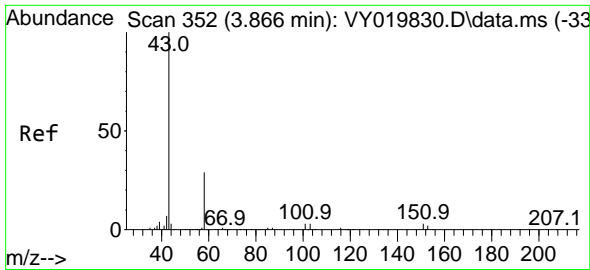
Tgt Ion: 94 Resp: 172
 Ion Ratio Lower Upper
 94 100
 96 97.6 74.1 111.1



#13
 Acrolein
 Concen: 4.355 ug/l
 RT: 3.641 min Scan# 315
 Delta R.T. -0.012 min
 Lab File: VY019935.D
 Acq: 17 Oct 2024 16:24

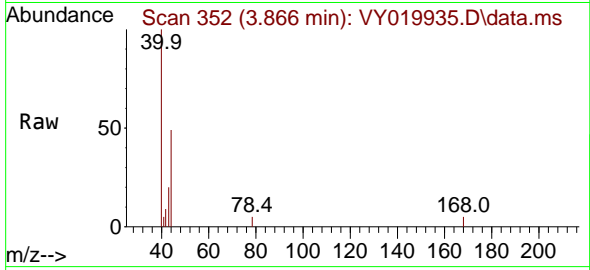
Tgt Ion: 56 Resp: 45
 Ion Ratio Lower Upper
 56 100
 55 42.2 55.7 83.5#



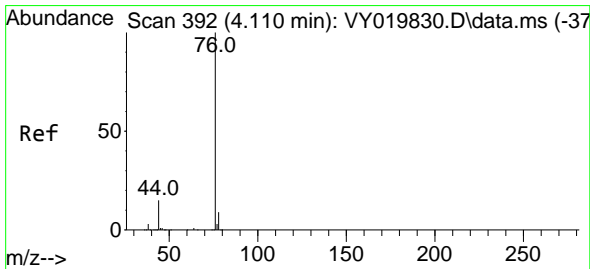
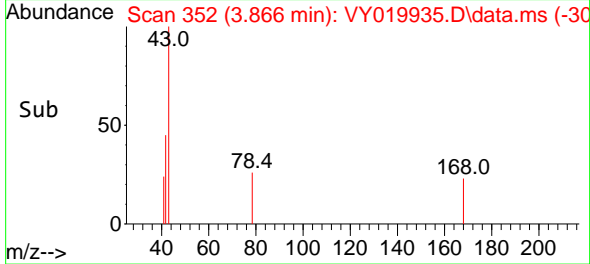
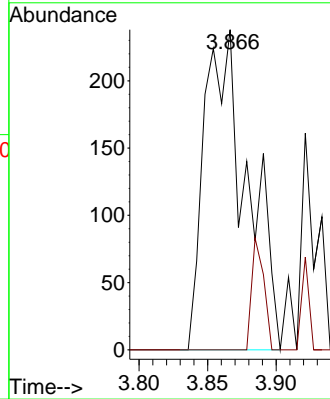


#16
 Acetone
 Concen: 14.151 ug/l
 RT: 3.866 min Scan# 311
 Delta R.T. -0.006 min
 Lab File: VY019935.D
 Acq: 17 Oct 2024 16:24

Instrument :
 MSVOA_Y
 ClientSampleId :

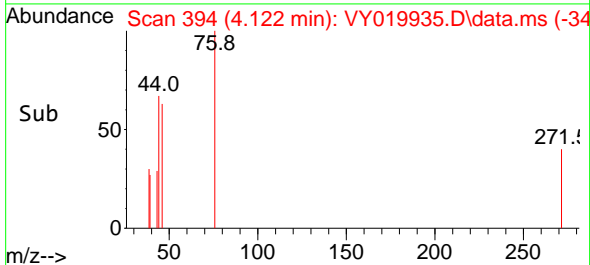
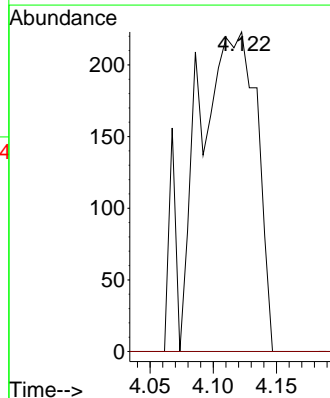
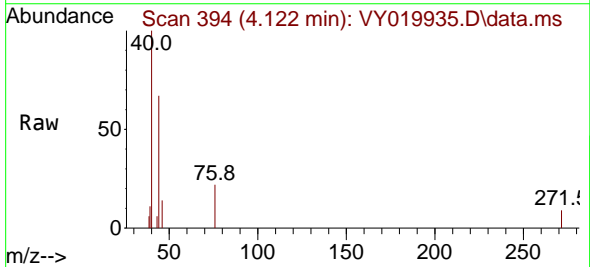


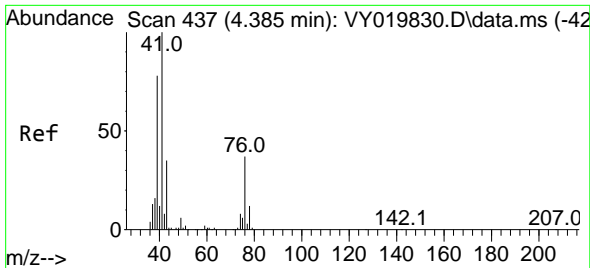
Tgt Ion: 43 Resp: 518
 Ion Ratio Lower Upper
 43 100
 58 0.0 31.7 47.5#



#17
 Carbon Disulfide
 Concen: 2.113 ug/l
 RT: 4.122 min Scan# 394
 Delta R.T. 0.019 min
 Lab File: VY019935.D
 Acq: 17 Oct 2024 16:24

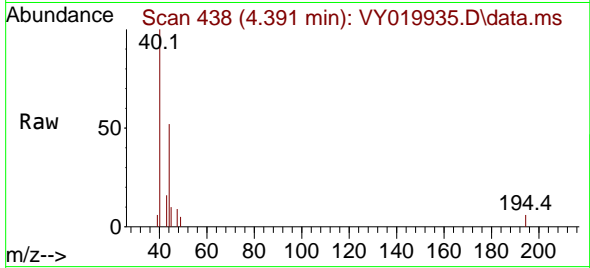
Tgt Ion: 76 Resp: 694
 Ion Ratio Lower Upper
 76 100
 78 0.0 6.8 10.2#



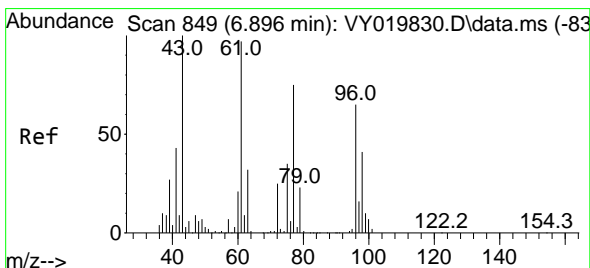
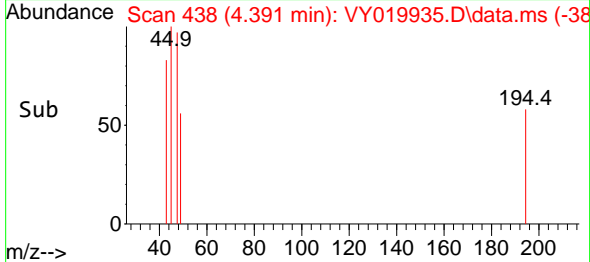
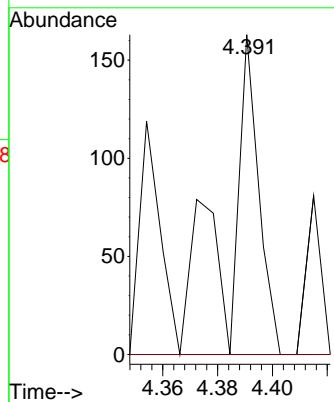


#18
 Methyl Acetate
 Concen: 1.712 ug/l
 RT: 4.391 min Scan# 41
 Delta R.T. 0.006 min
 Lab File: VY019935.D
 Acq: 17 Oct 2024 16:24

Instrument :
 MSVOA_Y
 ClientSampleId :

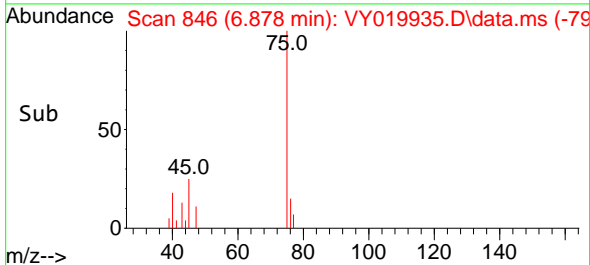
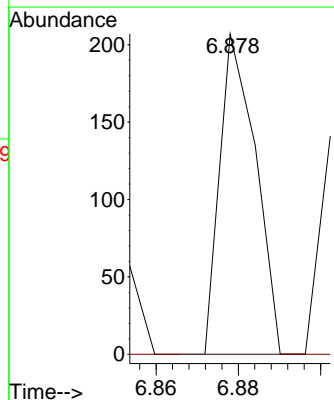
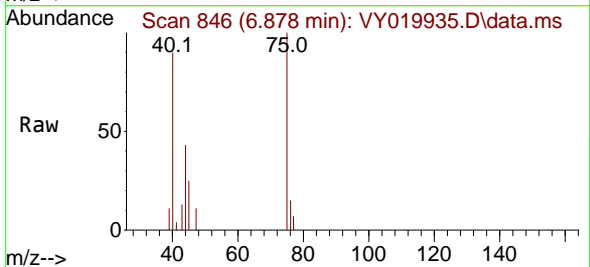


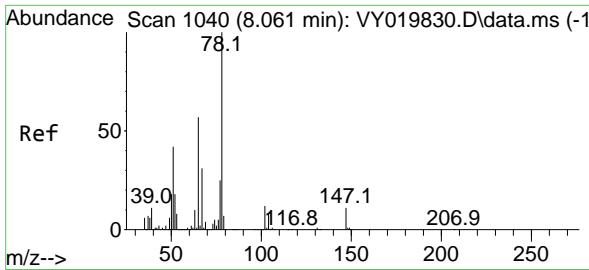
Tgt Ion: 43 Resp: 135
 Ion Ratio Lower Upper
 43 100
 74 0.0 23.3 34.9#



#25
 2-Butanone
 Concen: 2.551 ug/l
 RT: 6.878 min Scan# 846
 Delta R.T. -0.012 min
 Lab File: VY019935.D
 Acq: 17 Oct 2024 16:24

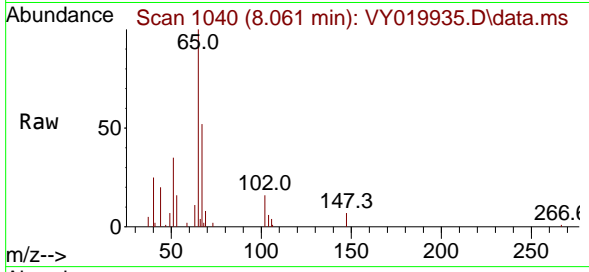
Tgt Ion: 43 Resp: 125
 Ion Ratio Lower Upper
 43 100
 72 0.0 27.3 40.9#



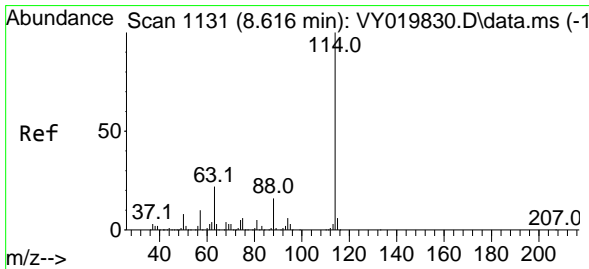
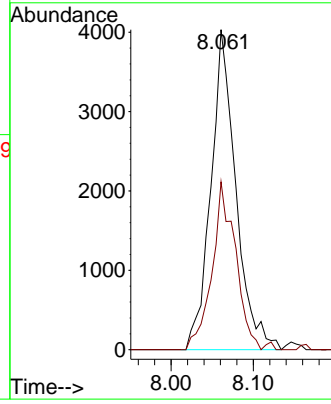
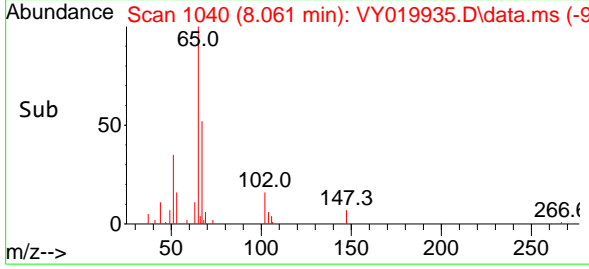


#33
 1,2-Dichloroethane-d4
 Concen: 60.606 ug/l
 RT: 8.061 min Scan# 1040
 Delta R.T. 0.000 min
 Lab File: VY019935.D
 Acq: 17 Oct 2024 16:24

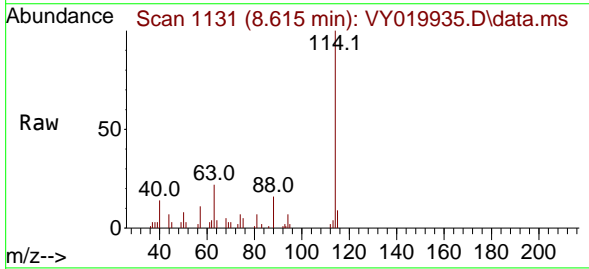
Instrument :
 MSVOA_Y
 ClientSampleId :



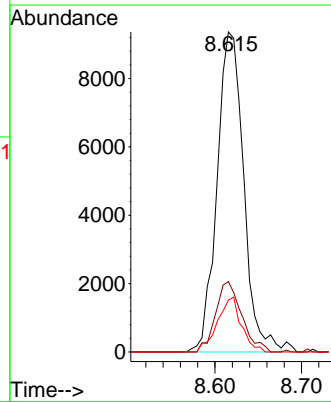
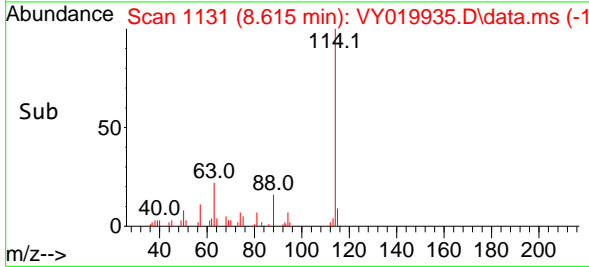
Tgt Ion: 65 Resp: 8522
 Ion Ratio Lower Upper
 65 100
 67 49.2 0.0 109.6

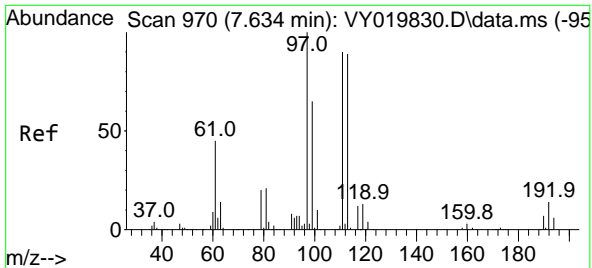


#34
 1,4-Difluorobenzene
 Concen: 50.000 ug/l
 RT: 8.615 min Scan# 1131
 Delta R.T. 0.000 min
 Lab File: VY019935.D
 Acq: 17 Oct 2024 16:24



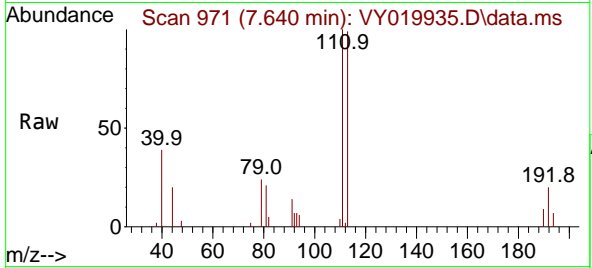
Tgt Ion: 114 Resp: 19966
 Ion Ratio Lower Upper
 114 100
 63 22.0 0.0 35.0
 88 16.2 0.0 27.2



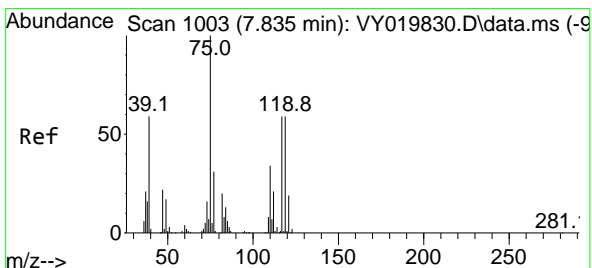
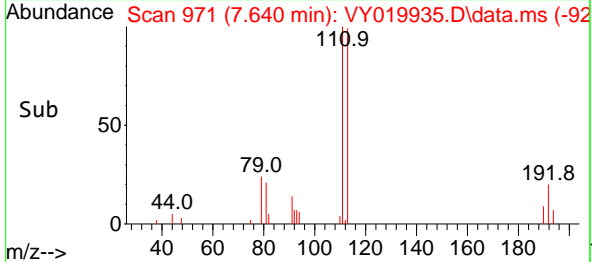
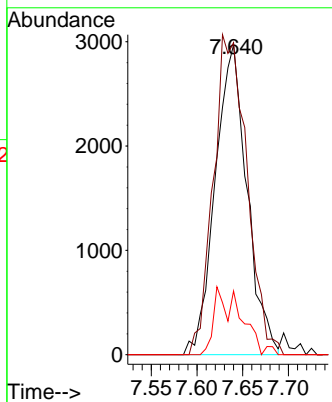


#35
 Dibromofluoromethane
 Concen: 54.511 ug/l
 RT: 7.640 min Scan# 91
 Delta R.T. 0.006 min
 Lab File: VY019935.D
 Acq: 17 Oct 2024 16:24

Instrument :
 MSVOA_Y
 ClientSampleId :

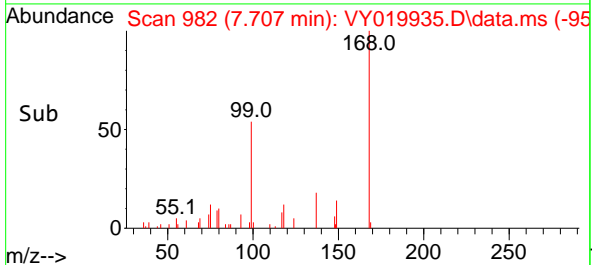
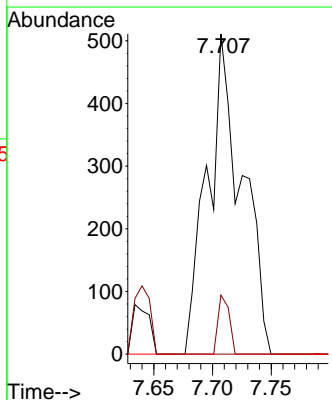
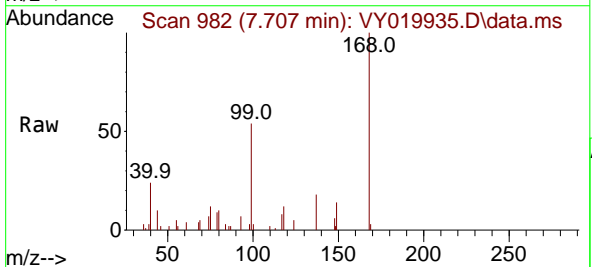


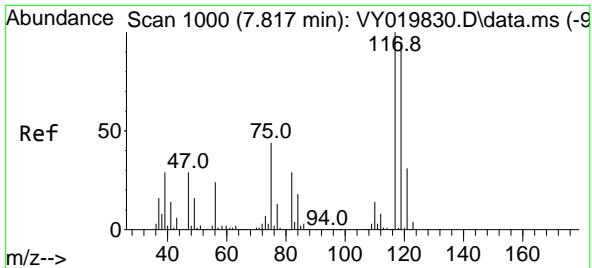
Tgt Ion: 113 Resp: 7182
 Ion Ratio Lower Upper
 113 100
 111 108.9 82.2 123.4
 192 8.6 15.9 23.9#



#36
 1,1-Dichloropropene
 Concen: 5.500 ug/l
 RT: 7.707 min Scan# 982
 Delta R.T. -0.128 min
 Lab File: VY019935.D
 Acq: 17 Oct 2024 16:24

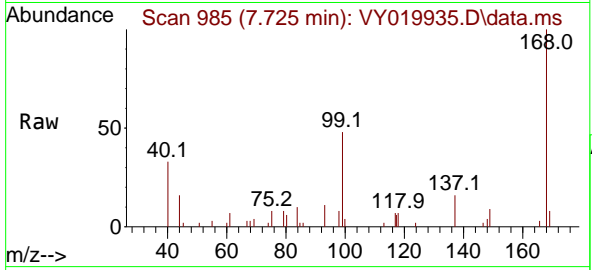
Tgt Ion: 75 Resp: 1044
 Ion Ratio Lower Upper
 75 100
 110 5.9 19.0 57.0#
 77 0.0 25.3 37.9#



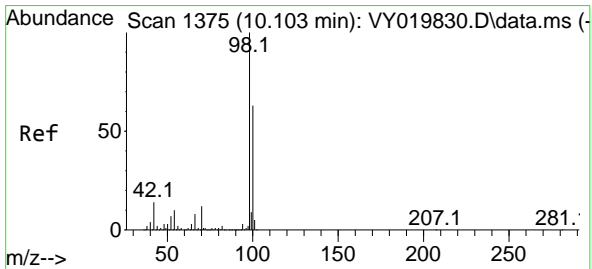
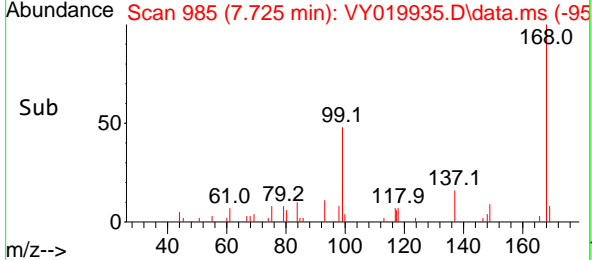
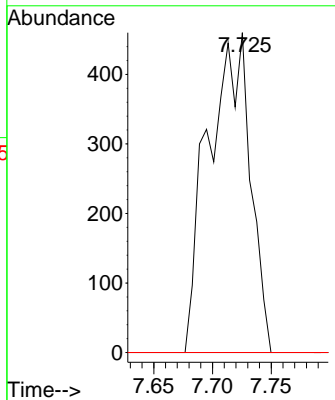


#38
 Carbon Tetrachloride
 Concen: 5.627 ug/l
 RT: 7.725 min Scan# 91
 Delta R.T. -0.091 min
 Lab File: VY019935.D
 Acq: 17 Oct 2024 16:24

Instrument :
 MSVOA_Y
 ClientSampled :

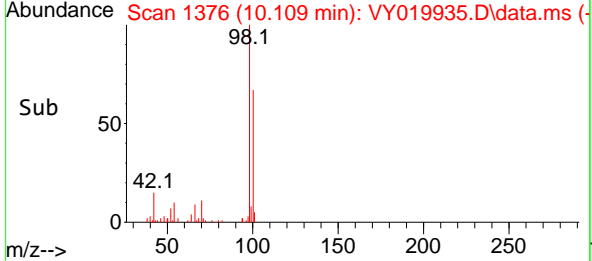
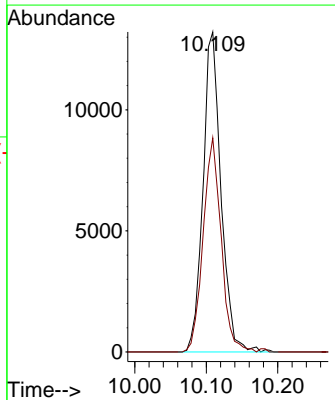
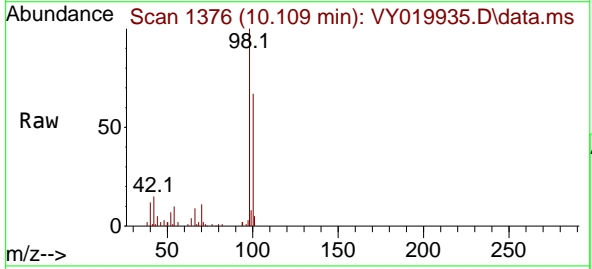


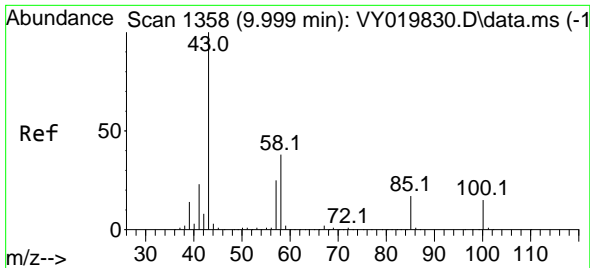
Tgt Ion:117 Resp: 1145
 Ion Ratio Lower Upper
 117 100
 119 0.0 75.8 113.6#
 121 0.0 24.0 36.0#



#50
 Toluene-d8
 Concen: 47.543 ug/l
 RT: 10.109 min Scan# 1376
 Delta R.T. 0.000 min
 Lab File: VY019935.D
 Acq: 17 Oct 2024 16:24

Tgt Ion: 98 Resp: 23132
 Ion Ratio Lower Upper
 98 100
 100 66.8 52.0 78.0

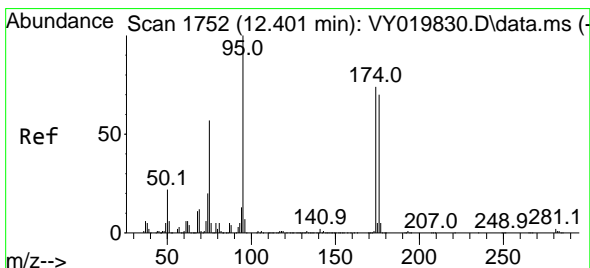
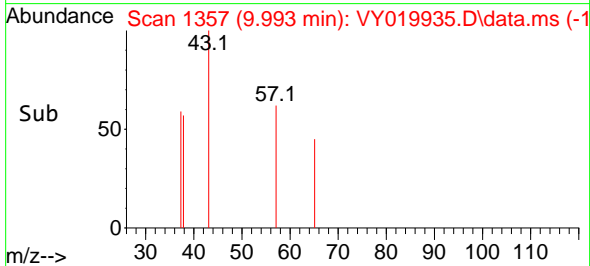
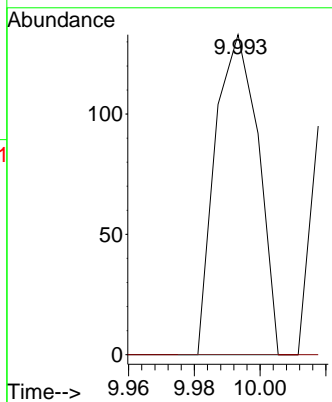
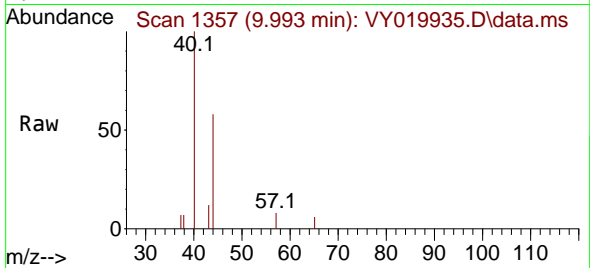




#51
 4-Methyl-2-Pentanone
 Concen: 1.166 ug/l
 RT: 9.993 min Scan# 11
 Delta R.T. -0.006 min
 Lab File: VY019935.D
 Acq: 17 Oct 2024 16:24

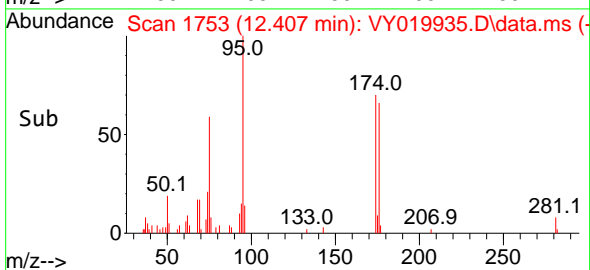
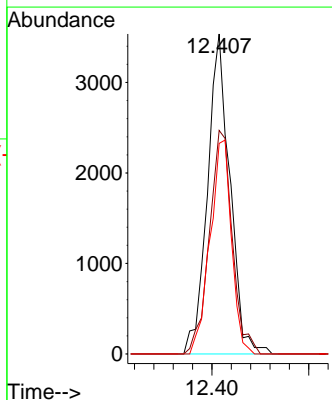
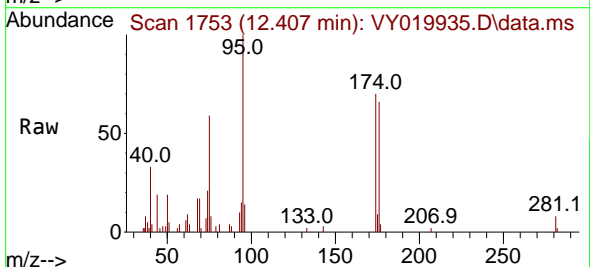
Instrument :
 MSVOA_Y
 ClientSampleId :

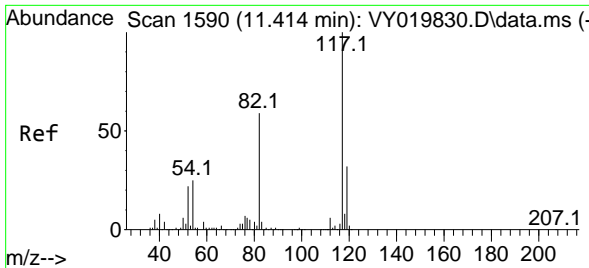
Tgt Ion: 43 Resp: 120
 Ion Ratio Lower Upper
 43 100
 58 0.0 35.7 53.5#



#62
 4-Bromofluorobenzene
 Concen: 32.428 ug/l
 RT: 12.407 min Scan# 1753
 Delta R.T. 0.000 min
 Lab File: VY019935.D
 Acq: 17 Oct 2024 16:24

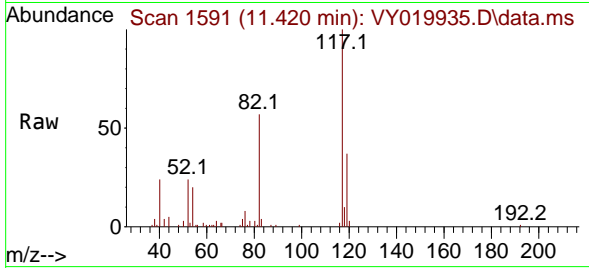
Tgt Ion: 95 Resp: 5701
 Ion Ratio Lower Upper
 95 100
 174 71.5 0.0 175.6
 176 63.8 0.0 171.4



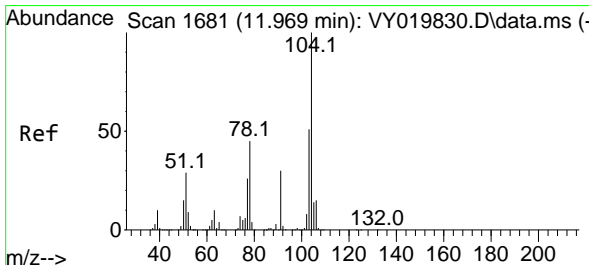
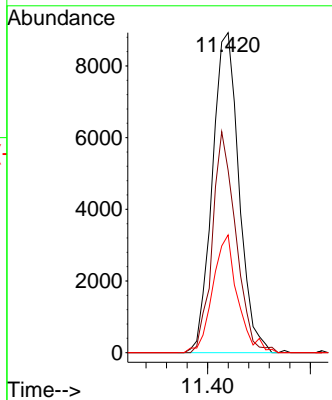
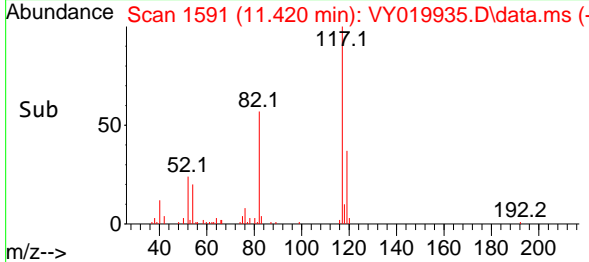


#63
 Chlorobenzene-d5
 Concen: 50.000 ug/l
 RT: 11.420 min Scan# 11
 Delta R.T. 0.000 min
 Lab File: VY019935.D
 Acq: 17 Oct 2024 16:24

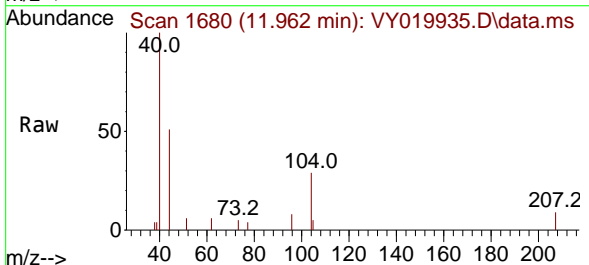
Instrument :
 MSVOA_Y
 ClientSampleId :



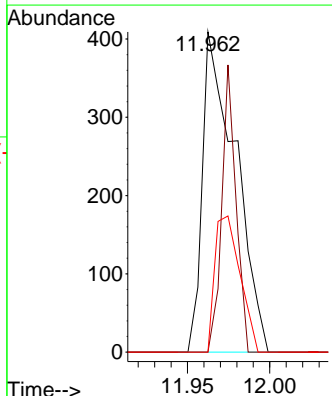
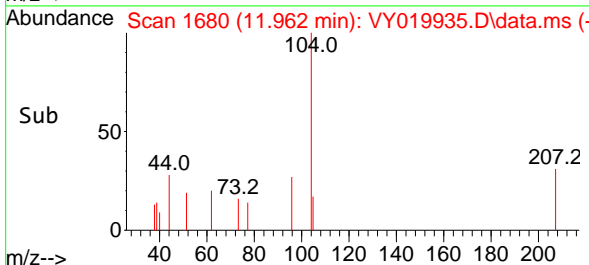
Tgt Ion:117 Resp: 16043
 Ion Ratio Lower Upper
 117 100
 82 57.0 42.4 63.6
 119 36.8 25.9 38.9

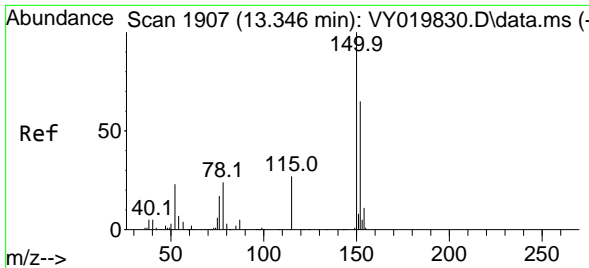


#70
 Styrene
 Concen: 1.426 ug/l
 RT: 11.962 min Scan# 1680
 Delta R.T. -0.006 min
 Lab File: VY019935.D
 Acq: 17 Oct 2024 16:24



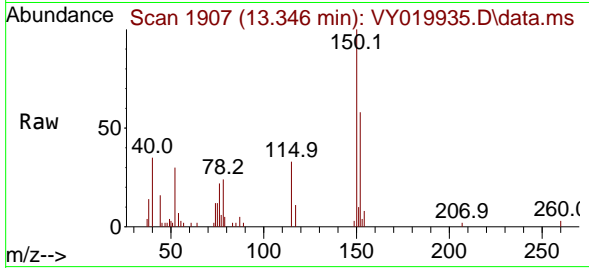
Tgt Ion:104 Resp: 569
 Ion Ratio Lower Upper
 104 100
 78 38.5 37.0 55.4
 103 32.5 44.2 66.2#



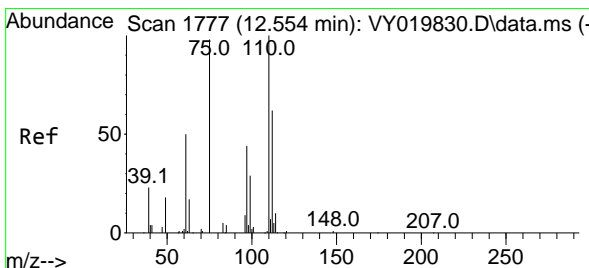
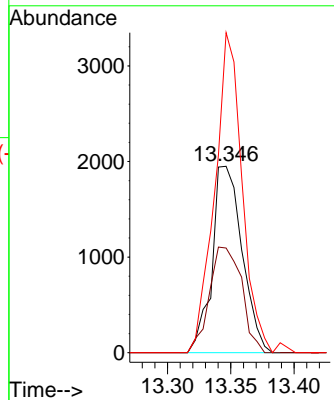
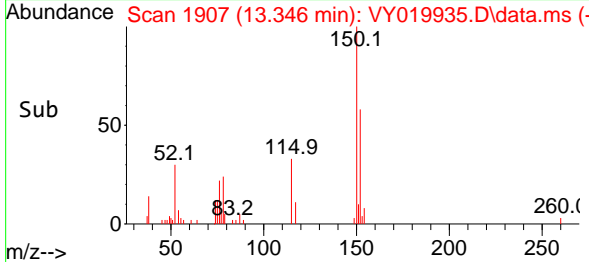


#72
 1,4-Dichlorobenzene-d4
 Concen: 50.000 ug/l
 RT: 13.346 min Scan# 1907
 Delta R.T. 0.000 min
 Lab File: VY019935.D
 Acq: 17 Oct 2024 16:24

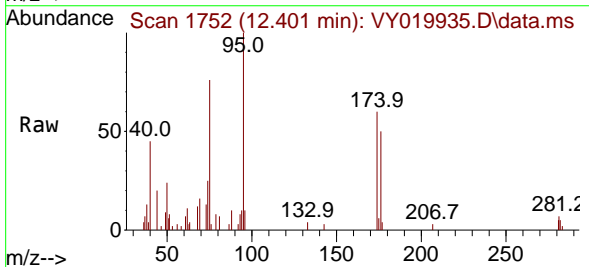
Instrument :
 MSVOA_Y
 ClientSampleId :



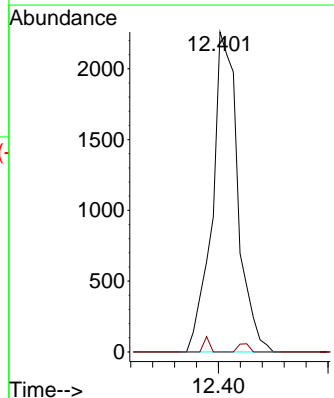
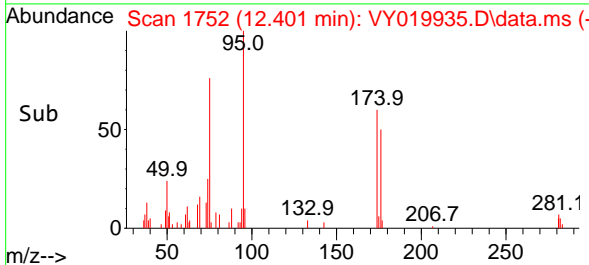
Tgt Ion:152 Resp: 3223
 Ion Ratio Lower Upper
 152 100
 115 60.9 28.2 84.7
 150 158.1 0.0 345.6

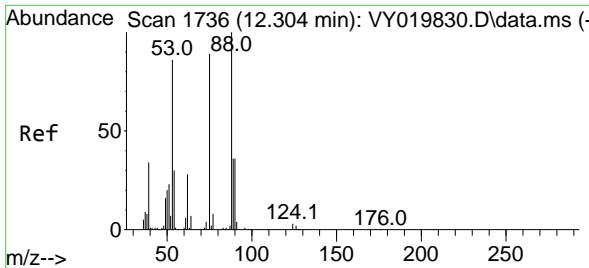


#76
 1,2,3-Trichloropropane
 Concen: 57.905 ug/l
 RT: 12.401 min Scan# 1752
 Delta R.T. -0.158 min
 Lab File: VY019935.D
 Acq: 17 Oct 2024 16:24



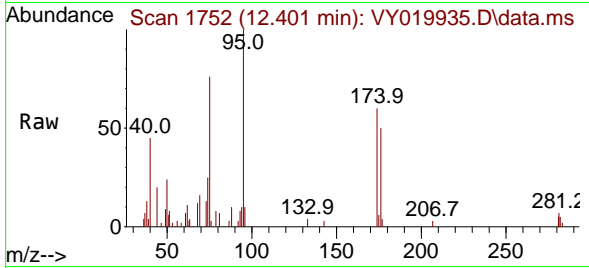
Tgt Ion: 75 Resp: 3656
 Ion Ratio Lower Upper
 75 100
 77 1.1 0.0 0.0#



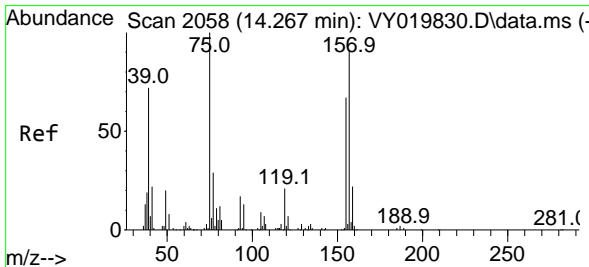
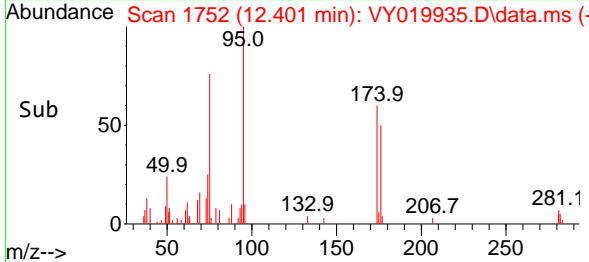
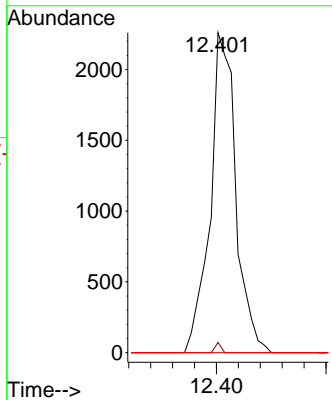


#81
 trans-1,4-Dichloro-2-butene
 Concen: 233.725 ug/l
 RT: 12.401 min Scan# 11
 Delta R.T. 0.098 min
 Lab File: VY019935.D
 Acq: 17 Oct 2024 16:24

Instrument :
 MSVOA_Y
 ClientSampleId :

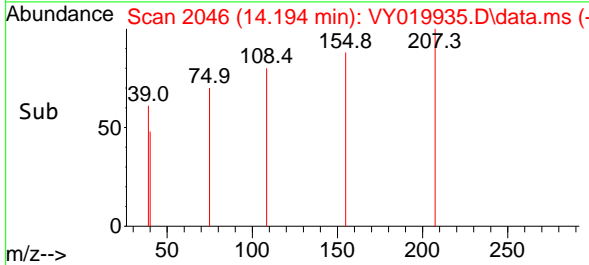
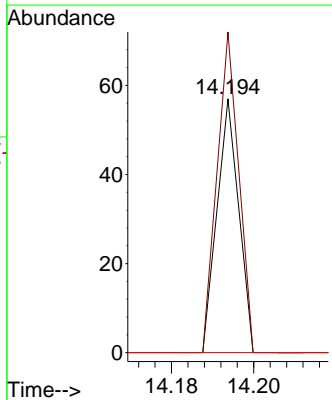
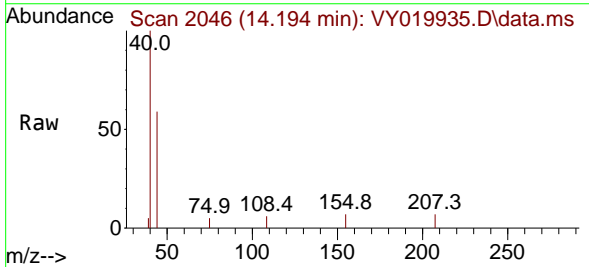


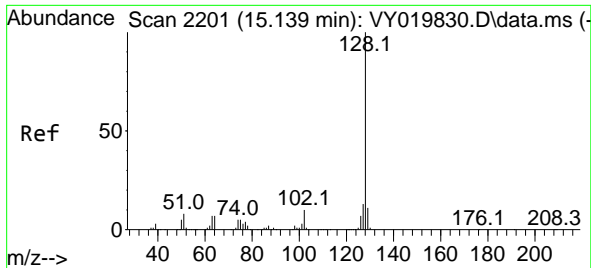
Tgt Ion	Resp	Lower	Upper
75	3656		
75	100		
53	0.7	66.8	100.2#
89	0.0	35.8	53.6#



#92
 1,2-Dibromo-3-Chloropropane
 Concen: 2.732 ug/l
 RT: 14.194 min Scan# 2046
 Delta R.T. -0.079 min
 Lab File: VY019935.D
 Acq: 17 Oct 2024 16:24

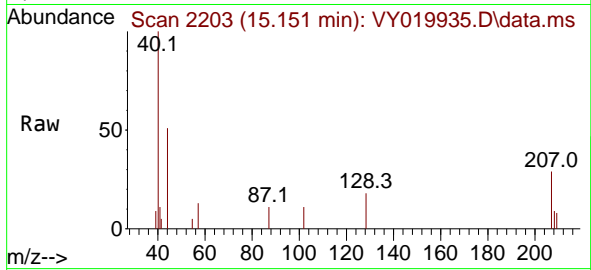
Tgt Ion	Resp	Lower	Upper
75	21		
75	100		
155	123.8	48.6	145.8
157	0.0	62.7	188.2#





#95
 Naphthalene
 Concen: 1.139 ug/l
 RT: 15.151 min Scan# 21
 Delta R.T. 0.006 min
 Lab File: VY019935.D
 Acq: 17 Oct 2024 16:24

Instrument :
 MSVOA_Y
 ClientSampleId :



Tgt Ion:128 Resp: 123

Ion	Ratio	Lower	Upper
128	100		
127	0.0	10.6	16.0#
129	0.0	8.6	13.0#

