

Data Path : Z:\voasrv\HPCHEM1\MSVOA\_Y\Data\VY102424\  
 Data File : VY020014.D  
 Acq On : 24 Oct 2024 17:06  
 Operator : SY/MD  
 Sample : P4512-03  
 Misc : 5.01g/5.0mL/MSVOA\_Y/SOIL/A  
 ALS Vial : 15 Sample Multiplier: 1

Instrument :  
 MSVOA\_Y  
 ClientSampleId :

Quant Time: Oct 25 01:42:45 2024  
 Quant Method : Z:\voasrv\HPCHEM1\MSVOA\_Y\methods\82Y100924S.M  
 Quant Title : SW846 8260  
 QLast Update : Wed Oct 16 05:44:48 2024  
 Response via : Initial Calibration

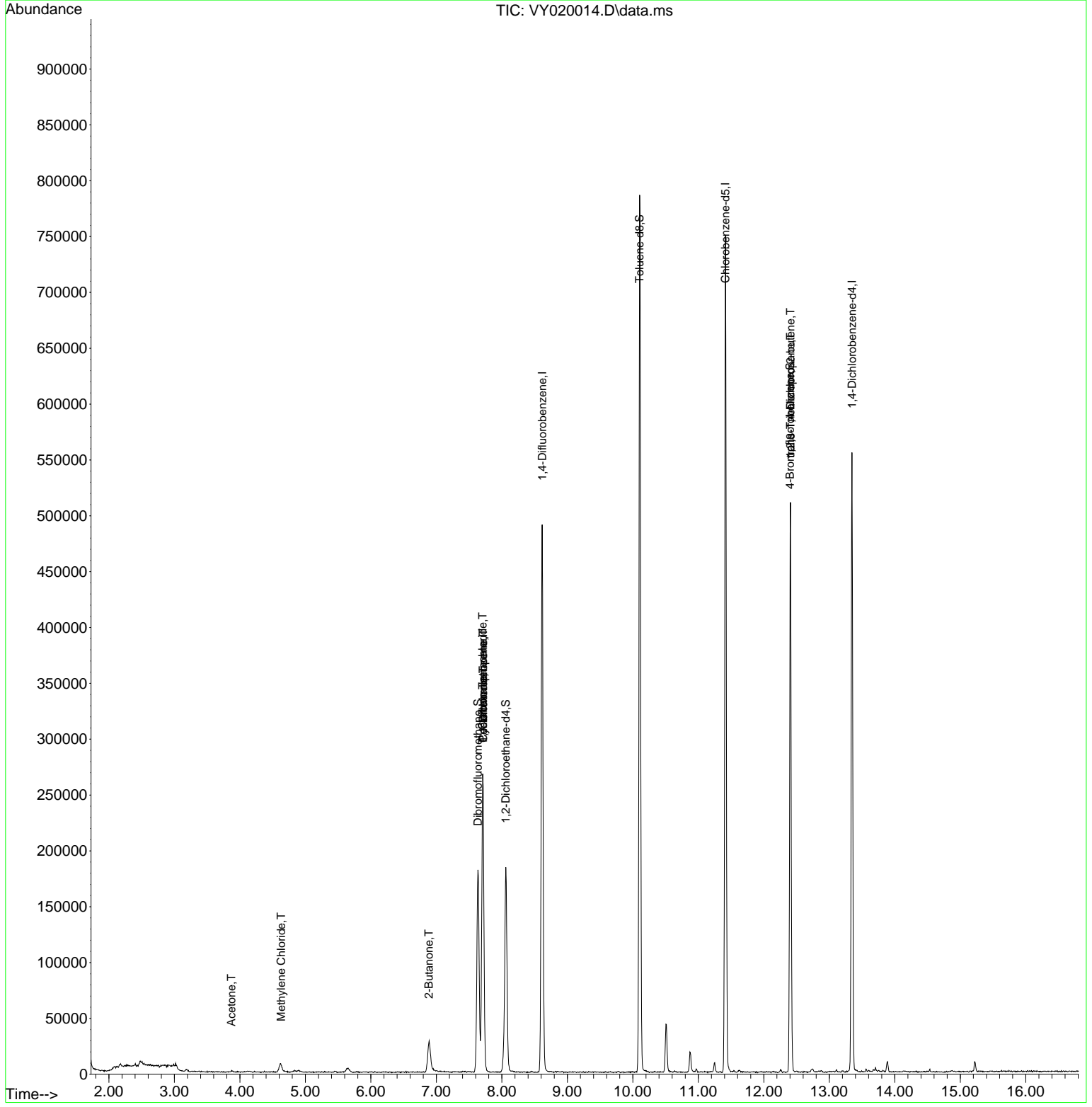
Compound	R.T.	QIon	Response	Conc	Units	Dev(Min)
-----						
Internal Standards						
1) Pentafluorobenzene	7.713	168	181808	50.000	ug/l	# 0.00
34) 1,4-Difluorobenzene	8.616	114	387933	50.000	ug/l	0.00
63) Chlorobenzene-d5	11.414	117	353663	50.000	ug/l	0.00
72) 1,4-Dichlorobenzene-d4	13.346	152	124281	50.000	ug/l	0.00
System Monitoring Compounds						
33) 1,2-Dichloroethane-d4	8.061	65	129734	57.953	ug/l	0.00
Spiked Amount	50.000	Range	50 - 163	Recovery	=	115.900%
35) Dibromofluoromethane	7.634	113	126766	49.519	ug/l	0.00
Spiked Amount	50.000	Range	54 - 147	Recovery	=	99.040%
50) Toluene-d8	10.103	98	480883	50.868	ug/l	0.00
Spiked Amount	50.000	Range	58 - 134	Recovery	=	101.740%
62) 4-Bromofluorobenzene	12.401	95	144451	42.289	ug/l	0.00
Spiked Amount	50.000	Range	29 - 146	Recovery	=	84.580%
Target Compounds						
						Qvalue
11) Tert butyl alcohol	4.836	59	648	Below Cal		100
16) Acetone	3.872	43	1357	2.329	ug/l #	36
20) Methylene Chloride	4.628	84	4811	1.451	ug/l	93
25) 2-Butanone	6.884	43	1925	2.468	ug/l #	69
31) Cyclohexane	7.713	56	5477	1.464	ug/l #	43
36) 1,1-Dichloropropene	7.713	75	17425	4.725	ug/l #	48
38) Carbon Tetrachloride	7.707	117	21678	5.483	ug/l #	18
76) 1,2,3-Trichloropropane	12.408	75	85666	35.186	ug/l #	100
81) trans-1,4-Dichloro-2-b...	12.408	75	85666	142.025	ug/l #	16
-----						

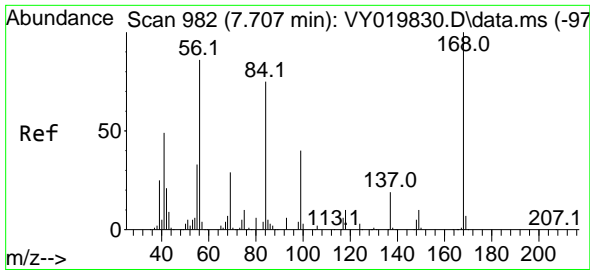
(#) = qualifier out of range (m) = manual integration (+) = signals summed

Data Path : Z:\voasrv\HPCHEM1\MSVOA\_Y\Data\VY102424\  
 Data File : VY020014.D  
 Acq On : 24 Oct 2024 17:06  
 Operator : SY/MD  
 Sample : P4512-03  
 Misc : 5.01g/5.0mL/MSVOA\_Y/SOIL/A  
 ALS Vial : 15 Sample Multiplier: 1

Instrument :  
 MSVOA\_Y  
 ClientSampleId :

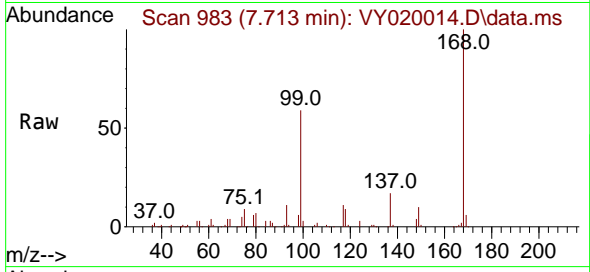
Quant Time: Oct 25 01:42:45 2024  
 Quant Method : Z:\voasrv\HPCHEM1\MSVOA\_Y\methods\82Y100924S.M  
 Quant Title : SW846 8260  
 QLast Update : Wed Oct 16 05:44:48 2024  
 Response via : Initial Calibration



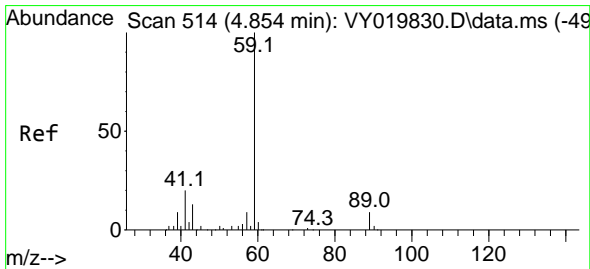
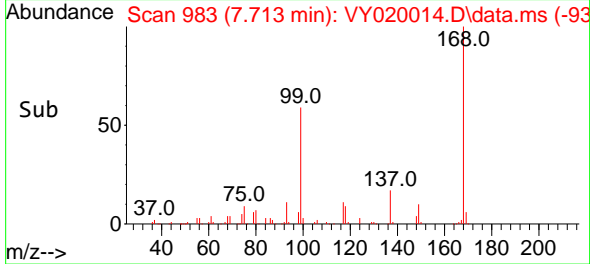
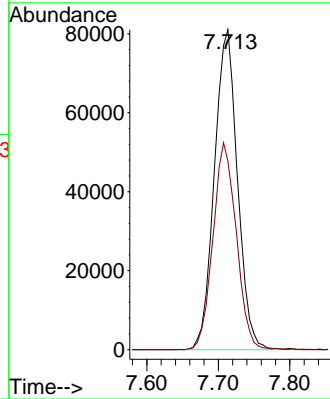


#1  
 Pentafluorobenzene  
 Concen: 50.000 ug/l  
 RT: 7.713 min Scan# 91  
 Delta R.T. 0.006 min  
 Lab File: VY020014.D  
 Acq: 24 Oct 2024 17:06

Instrument :  
 MSVOA\_Y  
 ClientSampleId :

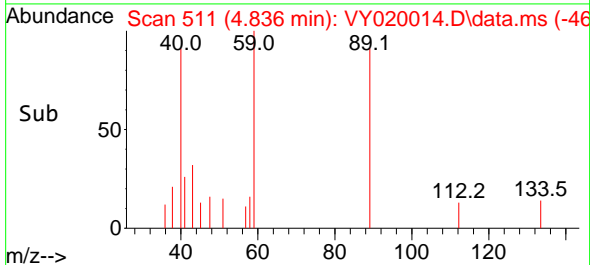
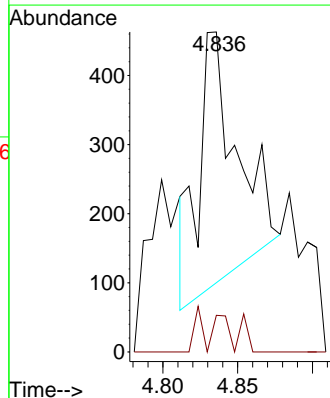
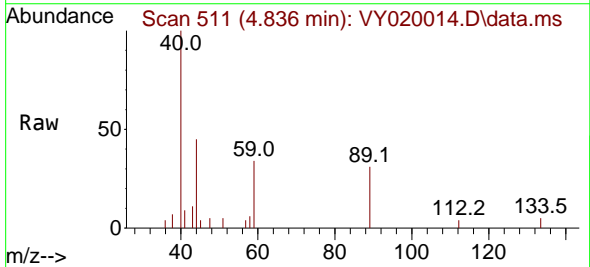


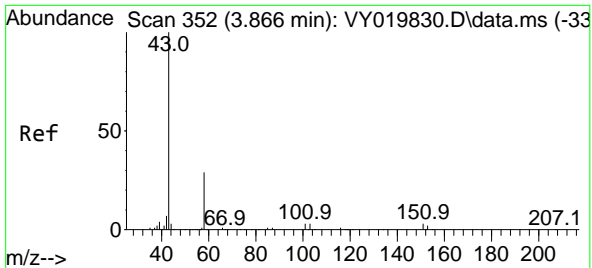
Tgt Ion:168 Resp: 181808  
 Ion Ratio Lower Upper  
 168 100  
 99 58.9 39.1 58.7#



#11  
 Tert butyl alcohol  
 Concen: Below Cal  
 RT: 4.836 min Scan# 511  
 Delta R.T. -0.024 min  
 Lab File: VY020014.D  
 Acq: 24 Oct 2024 17:06

Tgt Ion: 59 Resp: 648  
 Ion Ratio Lower Upper  
 59 100  
 57 3.7 3.0 4.6

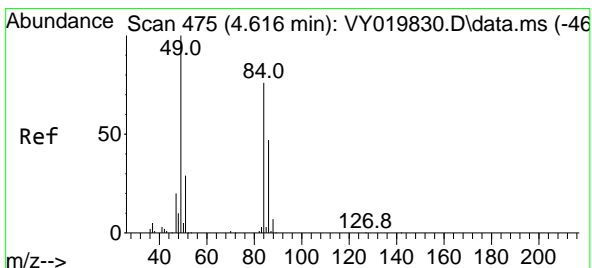
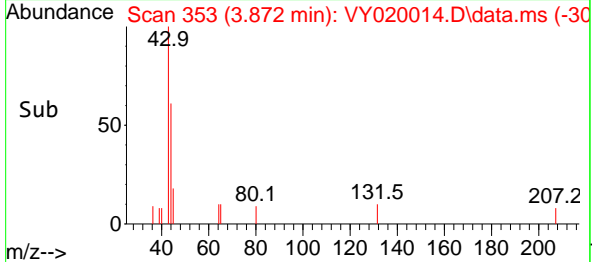
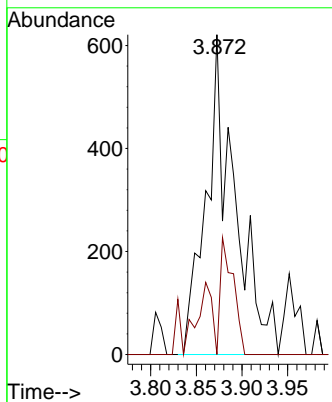
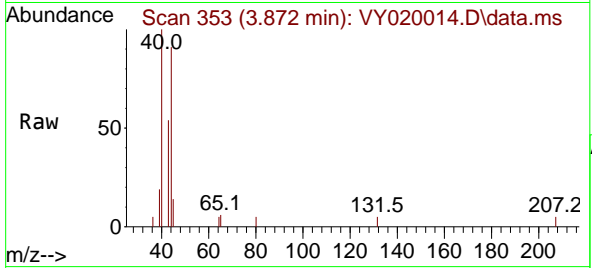




#16  
 Acetone  
 Concen: 2.329 ug/l  
 RT: 3.872 min Scan# 31  
 Delta R.T. 0.000 min  
 Lab File: VY020014.D  
 Acq: 24 Oct 2024 17:06

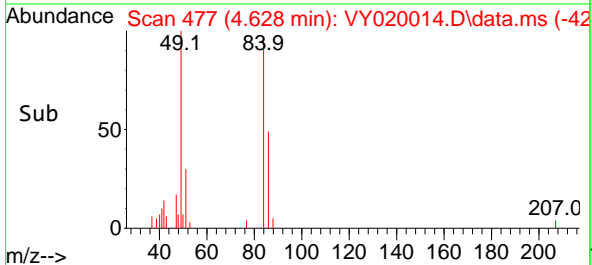
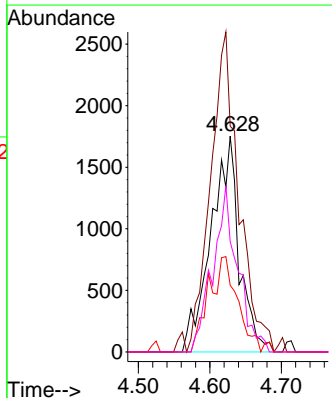
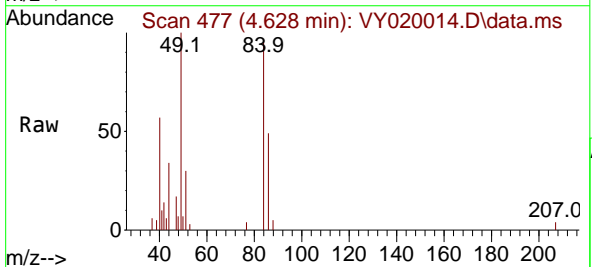
Instrument :  
 MSVOA\_Y  
 ClientSampleId :

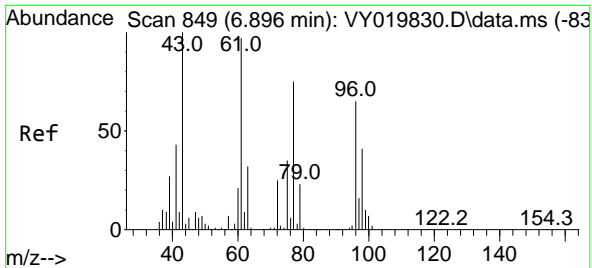
Tgt Ion: 43 Resp: 1357  
 Ion Ratio Lower Upper  
 43 100  
 58 0.0 31.7 47.5#



#20  
 Methylene Chloride  
 Concen: 1.451 ug/l  
 RT: 4.628 min Scan# 477  
 Delta R.T. 0.012 min  
 Lab File: VY020014.D  
 Acq: 24 Oct 2024 17:06

Tgt Ion: 84 Resp: 4811  
 Ion Ratio Lower Upper  
 84 100  
 49 101.7 84.4 126.6  
 51 30.9 26.0 39.0  
 86 51.1 49.5 74.3

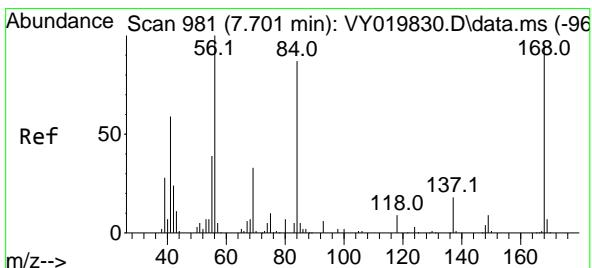
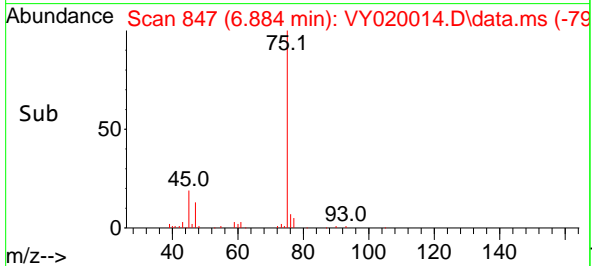
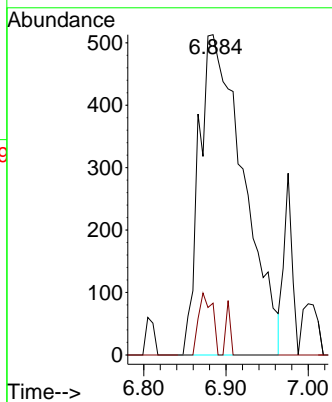
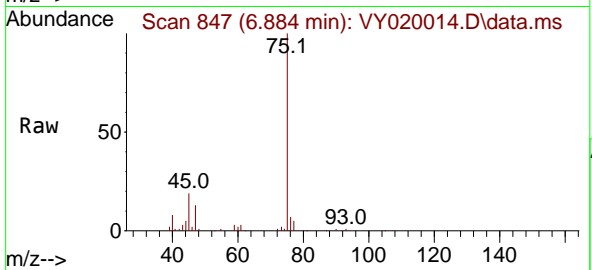




#25  
 2-Butanone  
 Concen: 2.468 ug/l  
 RT: 6.884 min Scan# 847  
 Delta R.T. -0.006 min  
 Lab File: VY020014.D  
 Acq: 24 Oct 2024 17:06

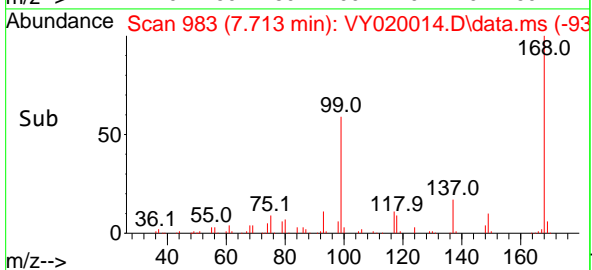
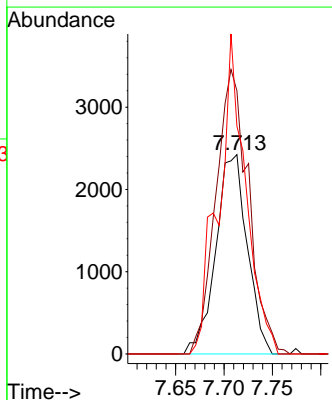
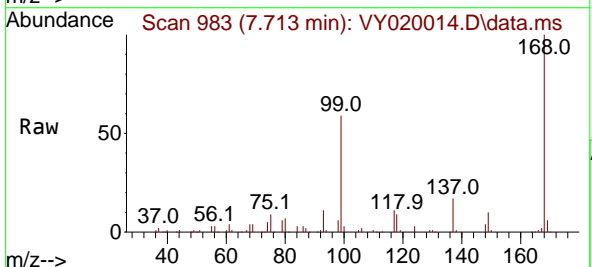
Instrument :  
 MSVOA\_Y  
 ClientSampleId :

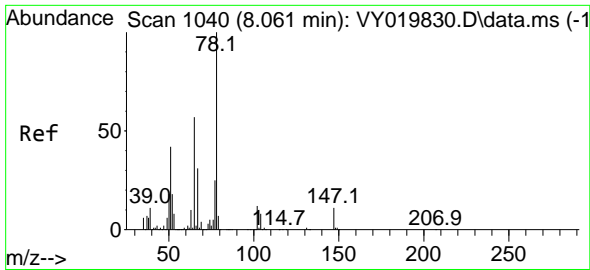
Tgt Ion: 43 Resp: 1925  
 Ion Ratio Lower Upper  
 43 100  
 72 16.2 27.3 40.9#



#31  
 Cyclohexane  
 Concen: 1.464 ug/l  
 RT: 7.713 min Scan# 983  
 Delta R.T. 0.012 min  
 Lab File: VY020014.D  
 Acq: 24 Oct 2024 17:06

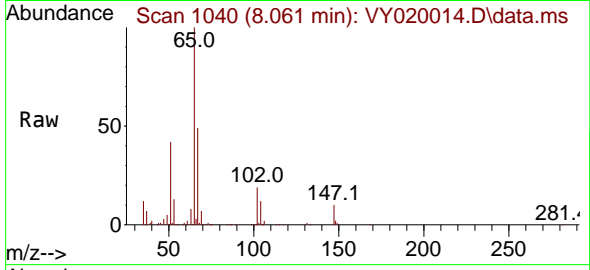
Tgt Ion: 56 Resp: 5477  
 Ion Ratio Lower Upper  
 56 100  
 69 132.0 28.7 43.1#  
 84 114.3 77.7 116.5



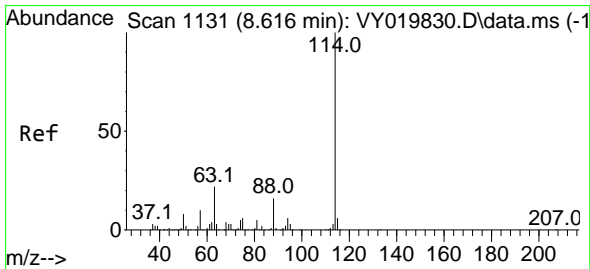
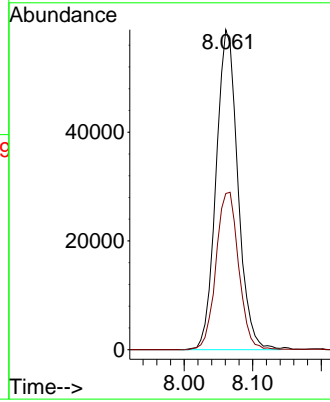
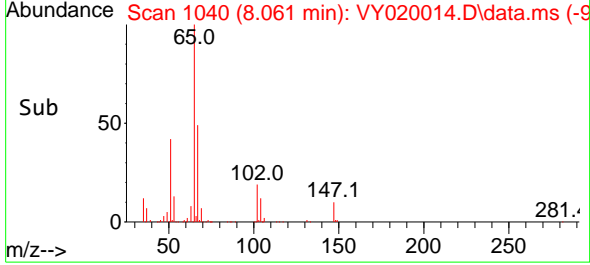


#33  
 1,2-Dichloroethane-d4  
 Concen: 57.953 ug/l  
 RT: 8.061 min Scan# 1040  
 Delta R.T. 0.000 min  
 Lab File: VY020014.D  
 Acq: 24 Oct 2024 17:06

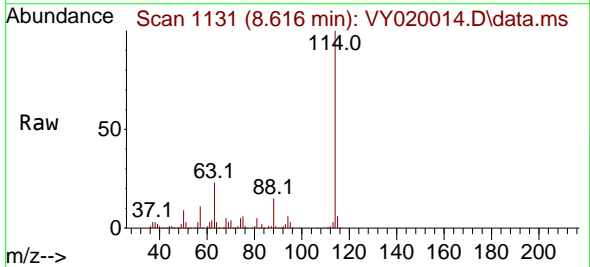
Instrument : MSVOA\_Y  
 ClientSampleId :



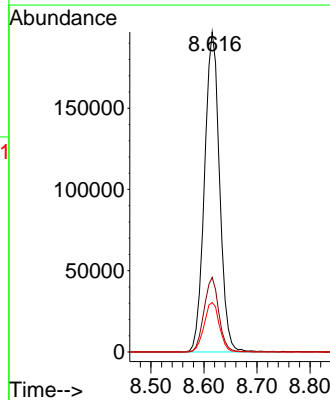
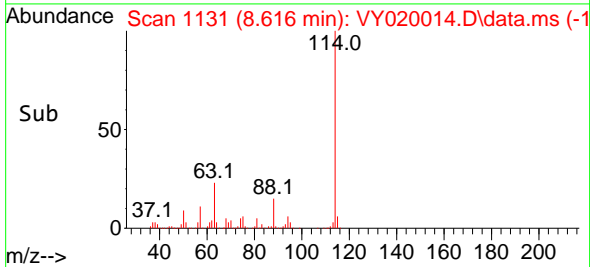
Tgt Ion: 65 Resp: 129734  
 Ion Ratio Lower Upper  
 65 100  
 67 51.2 0.0 109.6

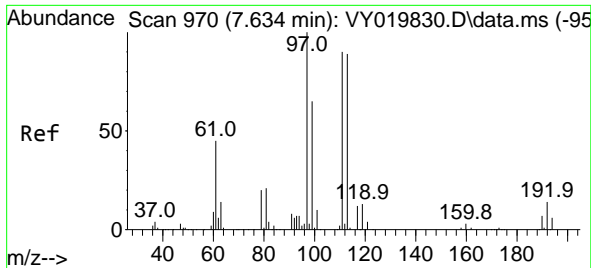


#34  
 1,4-Difluorobenzene  
 Concen: 50.000 ug/l  
 RT: 8.616 min Scan# 1131  
 Delta R.T. 0.000 min  
 Lab File: VY020014.D  
 Acq: 24 Oct 2024 17:06



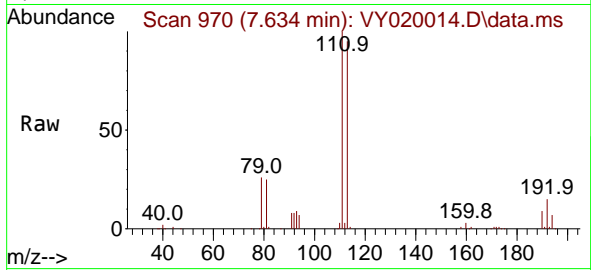
Tgt Ion: 114 Resp: 387933  
 Ion Ratio Lower Upper  
 114 100  
 63 23.3 0.0 35.0  
 88 15.4 0.0 27.2



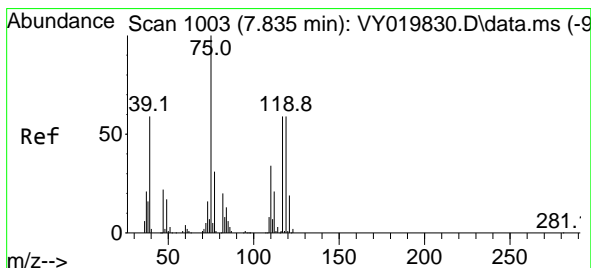
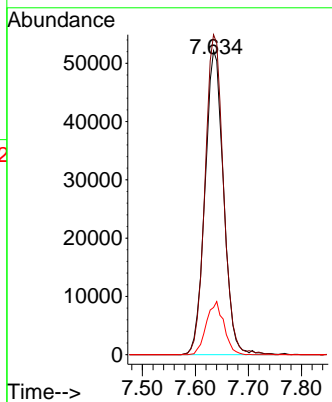
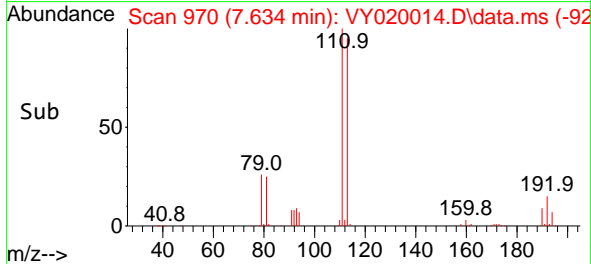


#35  
 Dibromofluoromethane  
 Concen: 49.519 ug/l  
 RT: 7.634 min Scan# 91  
 Delta R.T. 0.000 min  
 Lab File: VY020014.D  
 Acq: 24 Oct 2024 17:06

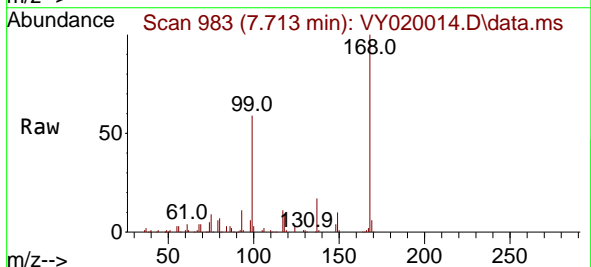
Instrument :  
 MSVOA\_Y  
 ClientSampleId :



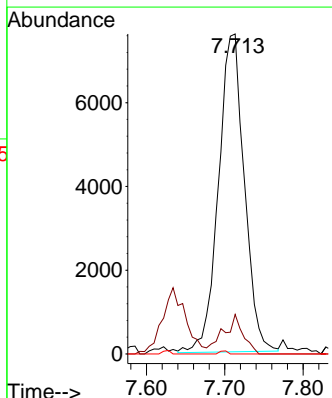
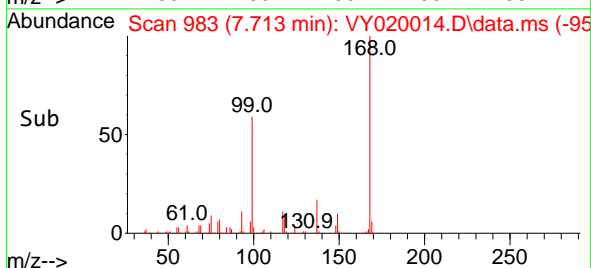
Tgt Ion:113 Resp: 126766  
 Ion Ratio Lower Upper  
 113 100  
 111 104.1 82.2 123.4  
 192 16.6 15.9 23.9

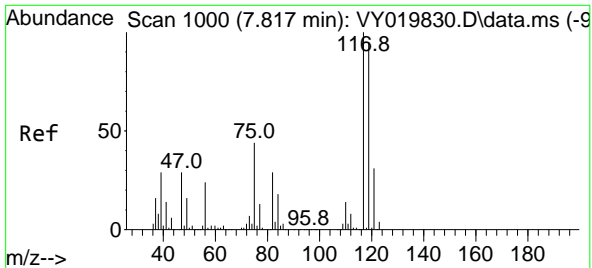


#36  
 1,1-Dichloropropene  
 Concen: 4.725 ug/l  
 RT: 7.713 min Scan# 983  
 Delta R.T. -0.122 min  
 Lab File: VY020014.D  
 Acq: 24 Oct 2024 17:06



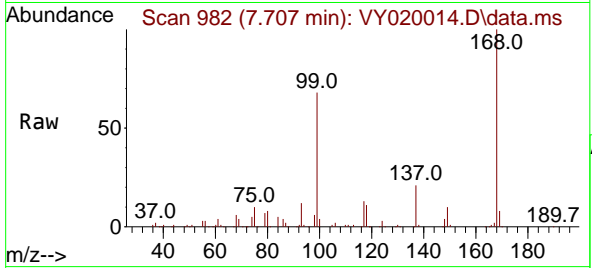
Tgt Ion: 75 Resp: 17425  
 Ion Ratio Lower Upper  
 75 100  
 110 9.4 19.0 57.0#  
 77 0.3 25.3 37.9#



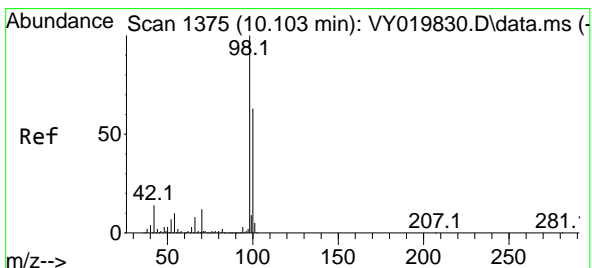
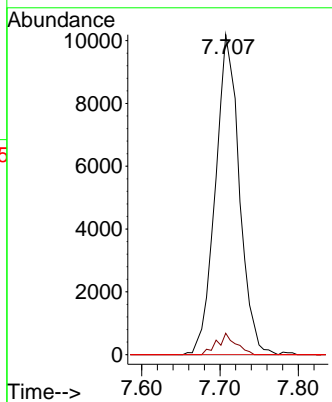
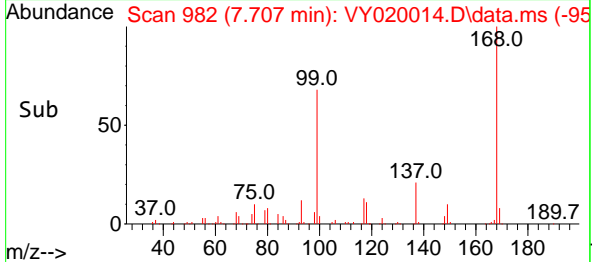


#38  
 Carbon Tetrachloride  
 Concen: 5.483 ug/l  
 RT: 7.707 min Scan# 91  
 Delta R.T. -0.109 min  
 Lab File: VY020014.D  
 Acq: 24 Oct 2024 17:06

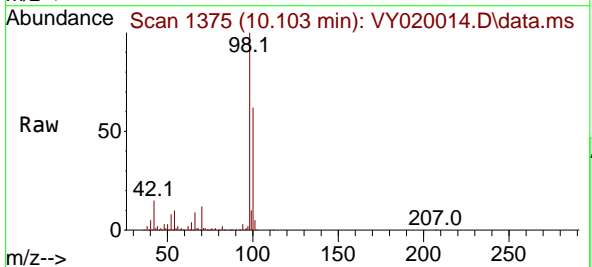
Instrument :  
 MSVOA\_Y  
 ClientSampleId :



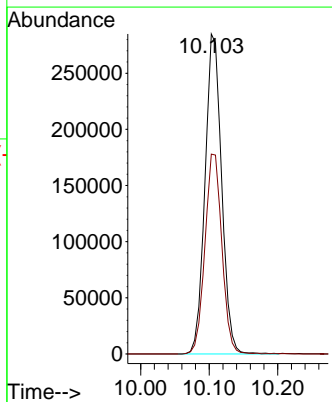
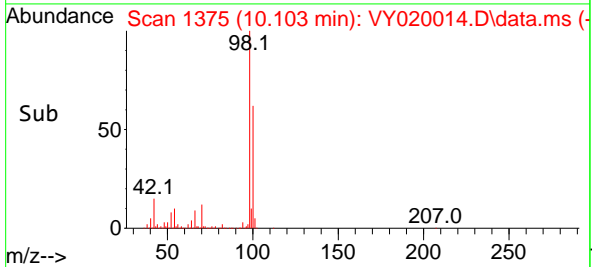
Tgt Ion:117 Resp: 21678  
 Ion Ratio Lower Upper  
 117 100  
 119 6.7 75.8 113.6#  
 121 0.0 24.0 36.0#



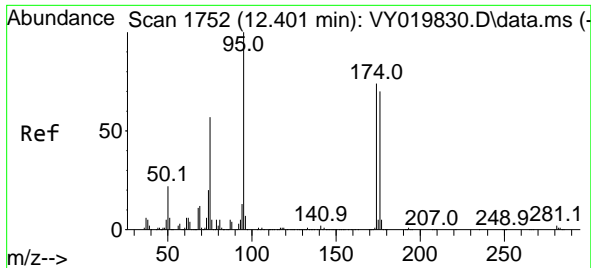
#50  
 Toluene-d8  
 Concen: 50.868 ug/l  
 RT: 10.103 min Scan# 1375  
 Delta R.T. -0.006 min  
 Lab File: VY020014.D  
 Acq: 24 Oct 2024 17:06



Tgt Ion: 98 Resp: 480883  
 Ion Ratio Lower Upper  
 98 100  
 100 63.8 52.0 78.0

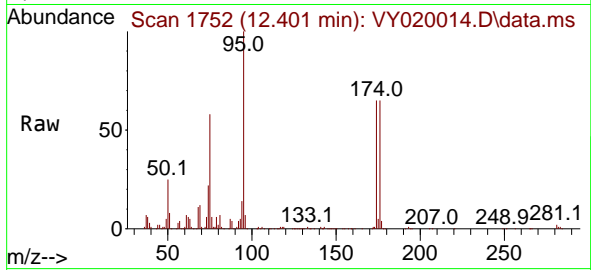




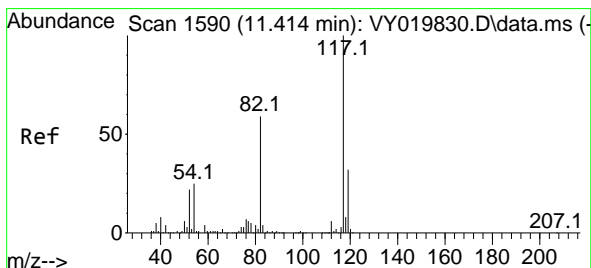
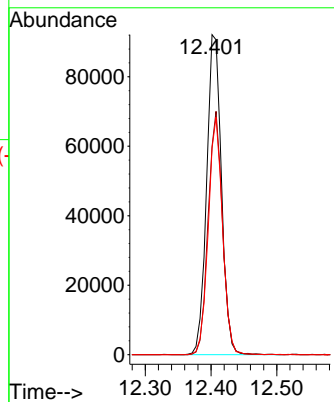
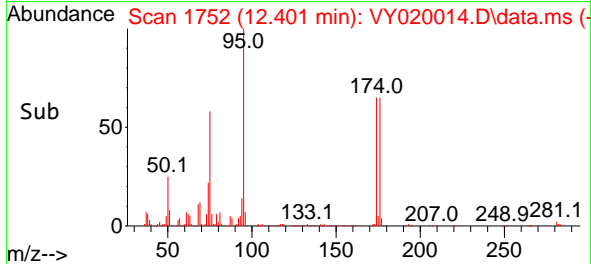


#62  
 4-Bromofluorobenzene  
 Concen: 42.289 ug/l  
 RT: 12.401 min Scan# 11  
 Delta R.T. -0.006 min  
 Lab File: VY020014.D  
 Acq: 24 Oct 2024 17:06

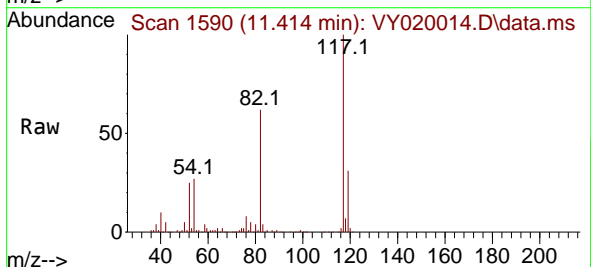
Instrument :  
 MSVOA\_Y  
 ClientSampleId :



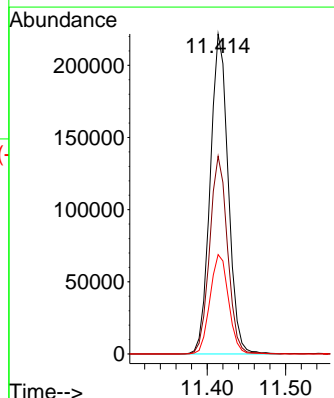
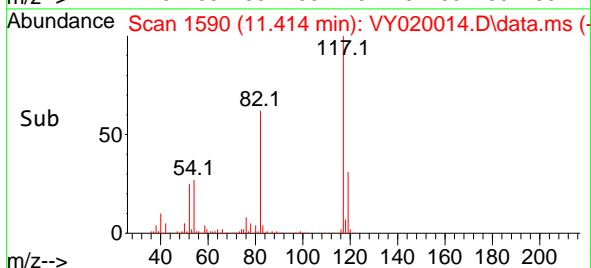
Tgt Ion: 95 Resp: 144451  
 Ion Ratio Lower Upper  
 95 100  
 174 73.1 0.0 175.6  
 176 71.3 0.0 171.4

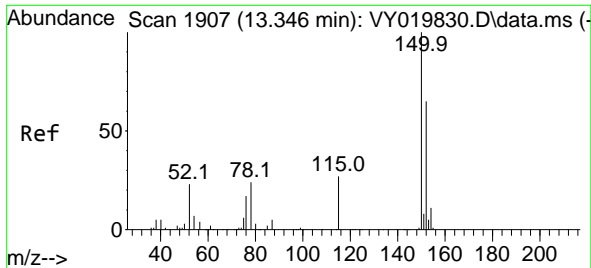


#63  
 Chlorobenzene-d5  
 Concen: 50.000 ug/l  
 RT: 11.414 min Scan# 1590  
 Delta R.T. -0.006 min  
 Lab File: VY020014.D  
 Acq: 24 Oct 2024 17:06



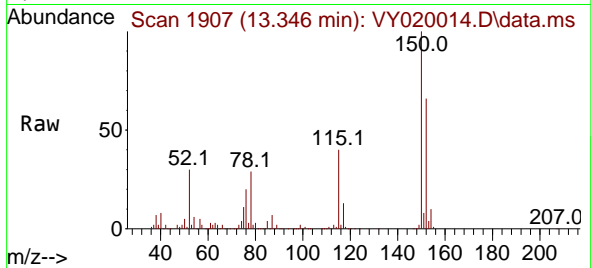
Tgt Ion: 117 Resp: 353663  
 Ion Ratio Lower Upper  
 117 100  
 82 61.8 42.4 63.6  
 119 31.0 25.9 38.9



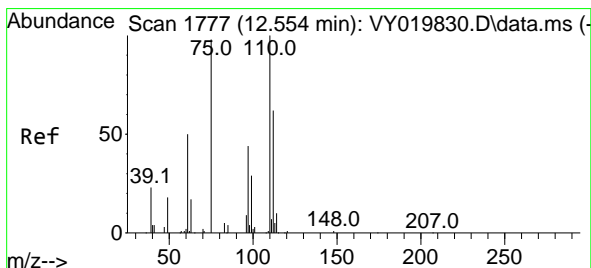
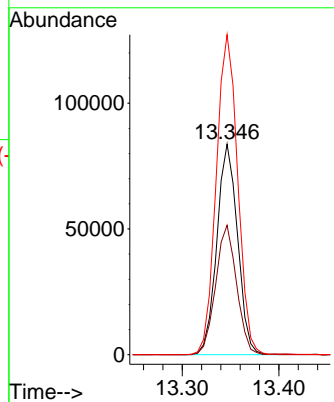
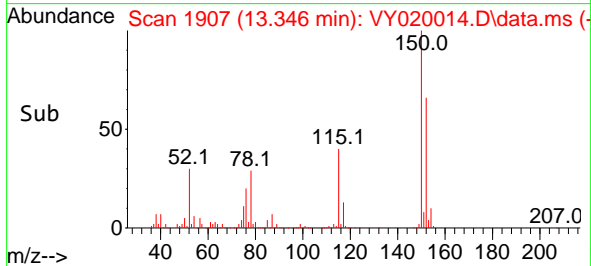


#72  
 1,4-Dichlorobenzene-d4  
 Concen: 50.000 ug/l  
 RT: 13.346 min Scan# 1907  
 Delta R.T. 0.000 min  
 Lab File: VY020014.D  
 Acq: 24 Oct 2024 17:06

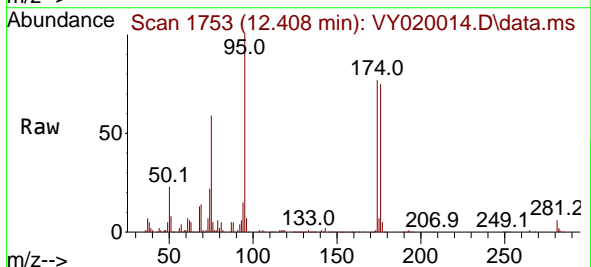
Instrument :  
 MSVOA\_Y  
 ClientSampleId :



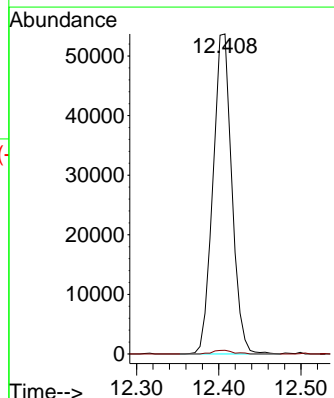
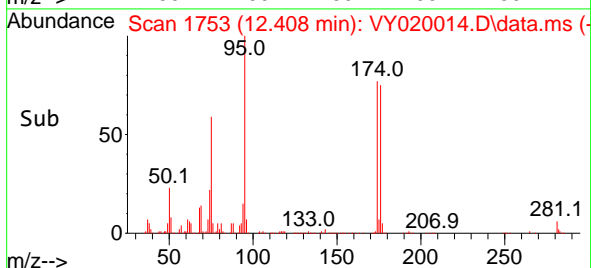
Tgt Ion:152 Resp: 124281  
 Ion Ratio Lower Upper  
 152 100  
 115 62.3 28.2 84.7  
 150 157.7 0.0 345.6

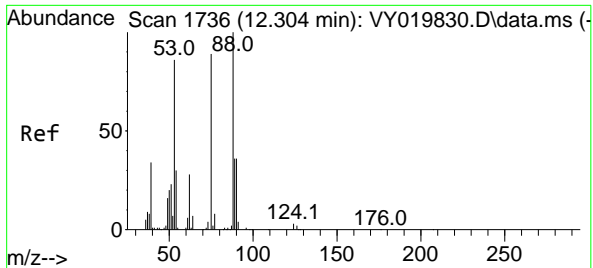


#76  
 1,2,3-Trichloropropane  
 Concen: 35.186 ug/l  
 RT: 12.408 min Scan# 1753  
 Delta R.T. -0.152 min  
 Lab File: VY020014.D  
 Acq: 24 Oct 2024 17:06



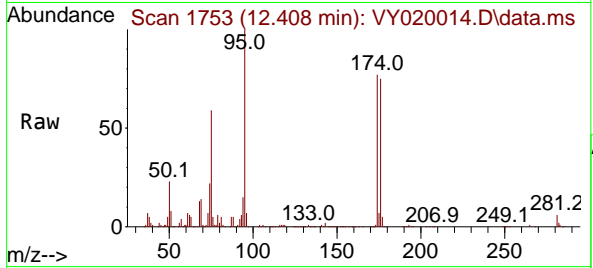
Tgt Ion: 75 Resp: 85666  
 Ion Ratio Lower Upper  
 75 100  
 77 1.3 0.0 0.0#





#81  
 trans-1,4-Dichloro-2-butene  
 Concen: 142.025 ug/l  
 RT: 12.408 min Scan# 11  
 Delta R.T. 0.104 min  
 Lab File: VY020014.D  
 Acq: 24 Oct 2024 17:06

Instrument :  
 MSVOA\_Y  
 ClientSampleId :



Tgt Ion: 75 Resp: 85666

Ion	Ratio	Lower	Upper
75	100		
53	0.1	66.8	100.2#
89	0.3	35.8	53.6#

