

Data Path : Z:\voasrv\HPCHEM1\MSVOA\_Y\Data\VY102424\  
 Data File : VY020012.D  
 Acq On : 24 Oct 2024 16:19  
 Operator : SY/MD  
 Sample : P4508-07  
 Misc : 4.65g/5.0mL/MSVOA\_Y/SOIL/A  
 ALS Vial : 13 Sample Multiplier: 1

**Instrument :**  
 MSVOA\_Y  
**ClientSampleId :**  
 BP-F23-VOC

Quant Time: Oct 25 01:42:03 2024  
 Quant Method : Z:\voasrv\HPCHEM1\MSVOA\_Y\methods\82Y100924S.M  
 Quant Title : SW846 8260  
 QLast Update : Wed Oct 16 05:44:48 2024  
 Response via : Initial Calibration

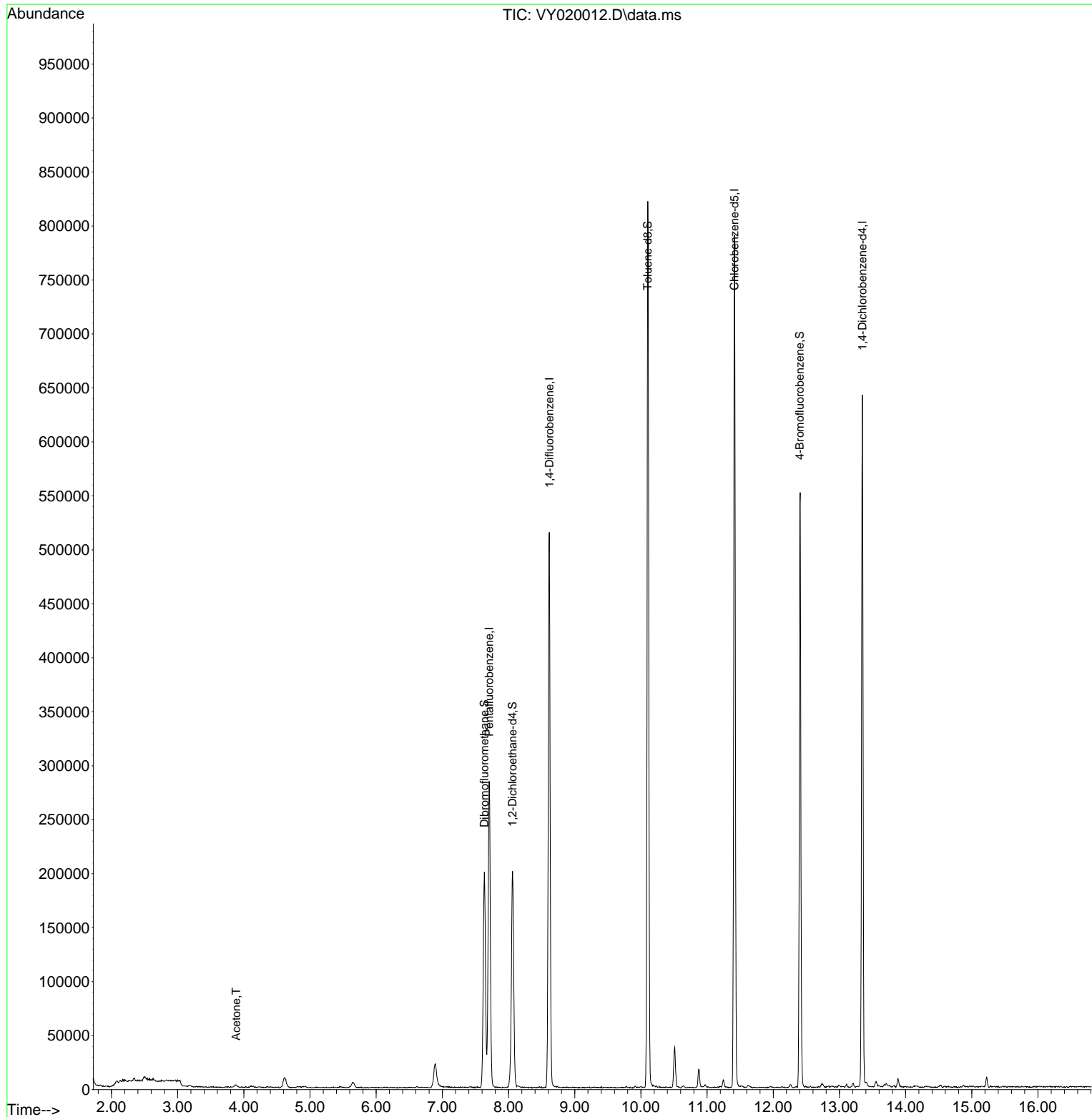
Compound	R.T.	QIon	Response	Conc	Units	Dev(Min)
-----						
Internal Standards						
1) Pentafluorobenzene	7.707	168	194036	50.000	ug/l	# 0.00
34) 1,4-Difluorobenzene	8.616	114	407419	50.000	ug/l	0.00
63) Chlorobenzene-d5	11.414	117	383251	50.000	ug/l	0.00
72) 1,4-Dichlorobenzene-d4	13.346	152	142142	50.000	ug/l	0.00
System Monitoring Compounds						
33) 1,2-Dichloroethane-d4	8.061	65	150762	63.103	ug/l	0.00
Spiked Amount	50.000	Range	50 - 163	Recovery	=	126.200%
35) Dibromofluoromethane	7.634	113	139125	51.748	ug/l	0.00
Spiked Amount	50.000	Range	54 - 147	Recovery	=	103.500%
50) Toluene-d8	10.103	98	511591	51.528	ug/l	0.00
Spiked Amount	50.000	Range	58 - 134	Recovery	=	103.060%
62) 4-Bromofluorobenzene	12.401	95	160935	44.861	ug/l	0.00
Spiked Amount	50.000	Range	29 - 146	Recovery	=	89.720%
Target Compounds						
16) Acetone	3.885	43	3891	6.256	ug/l	# 74
-----						

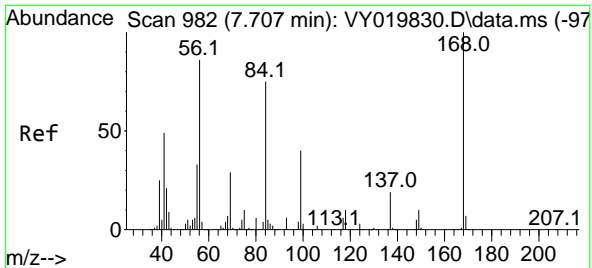
(#) = qualifier out of range (m) = manual integration (+) = signals summed

Data Path : Z:\voasrv\HPCHEM1\MSVOA\_Y\Data\VY102424\  
 Data File : VY020012.D  
 Acq On : 24 Oct 2024 16:19  
 Operator : SY/MD  
 Sample : P4508-07  
 Misc : 4.65g/5.0mL/MSVOA\_Y/SOIL/A  
 ALS Vial : 13 Sample Multiplier: 1

Instrument :  
 MSVOA\_Y  
 ClientSampleId :  
 BP-F23-VOC

Quant Time: Oct 25 01:42:03 2024  
 Quant Method : Z:\voasrv\HPCHEM1\MSVOA\_Y\methods\82Y100924S.M  
 Quant Title : SW846 8260  
 QLast Update : Wed Oct 16 05:44:48 2024  
 Response via : Initial Calibration

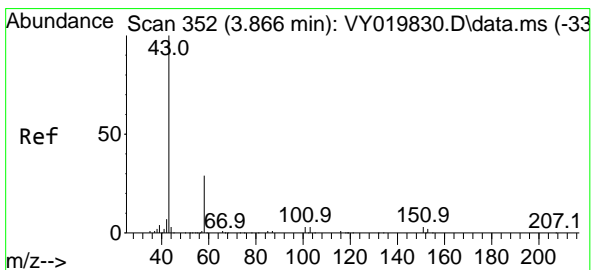
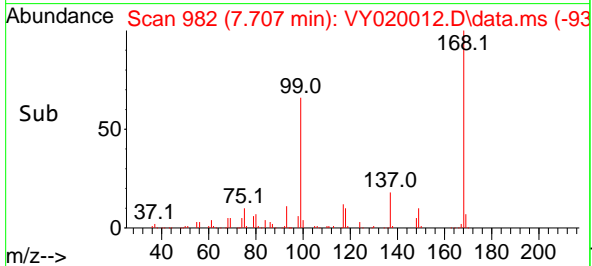
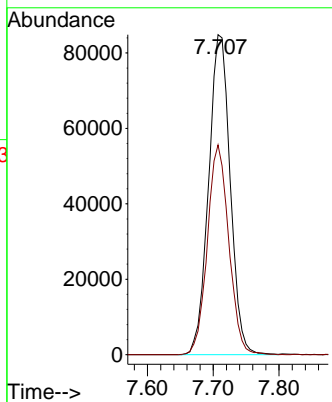
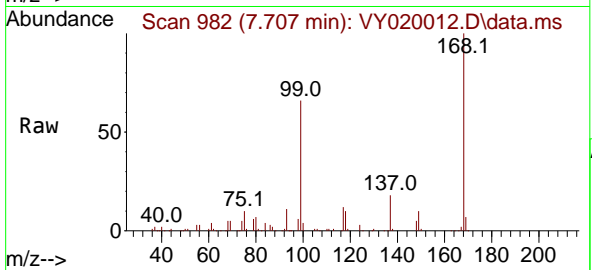




#1  
 Pentafluorobenzene  
 Concen: 50.000 ug/l  
 RT: 7.707 min Scan# 91  
 Delta R.T. 0.000 min  
 Lab File: VY020012.D  
 Acq: 24 Oct 2024 16:19

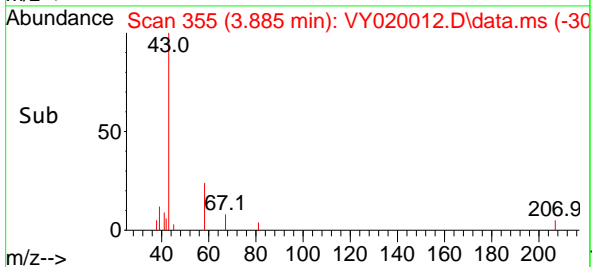
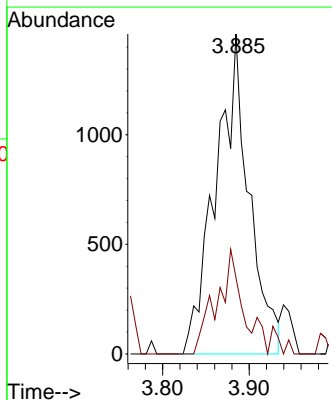
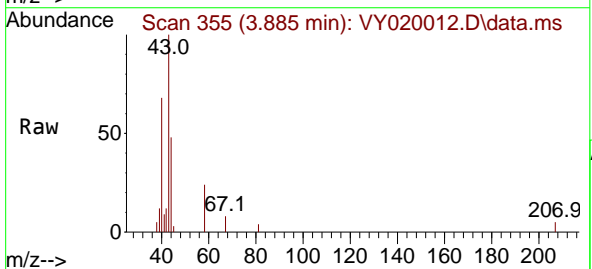
Instrument :  
 MSVOA\_Y  
 ClientSampleId :  
 BP-F23-VOC

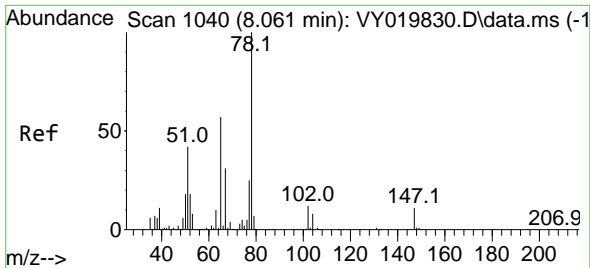
Tgt Ion:168 Resp: 194036  
 Ion Ratio Lower Upper  
 168 100  
 99 65.6 39.1 58.7#



#16  
 Acetone  
 Concen: 6.256 ug/l  
 RT: 3.885 min Scan# 355  
 Delta R.T. 0.012 min  
 Lab File: VY020012.D  
 Acq: 24 Oct 2024 16:19

Tgt Ion: 43 Resp: 3891  
 Ion Ratio Lower Upper  
 43 100  
 58 23.8 31.7 47.5#

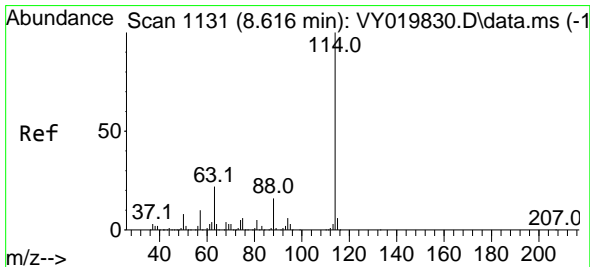
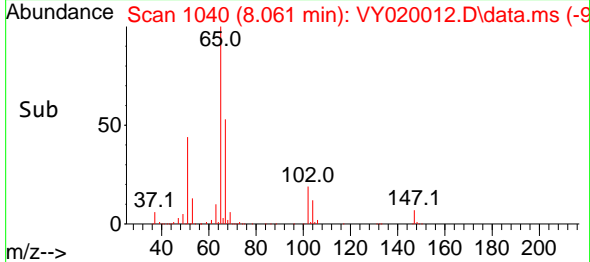
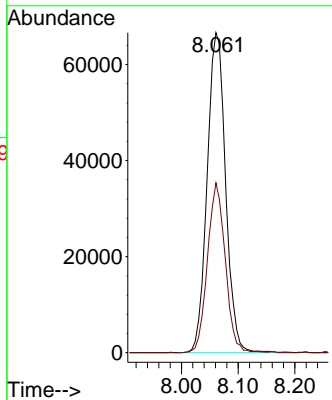
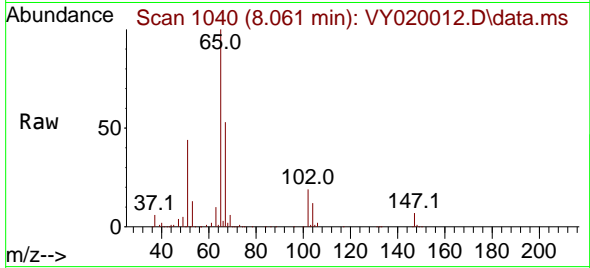




#33  
 1,2-Dichloroethane-d4  
 Concen: 63.103 ug/l  
 RT: 8.061 min Scan# 1040  
 Delta R.T. 0.000 min  
 Lab File: VY020012.D  
 Acq: 24 Oct 2024 16:19

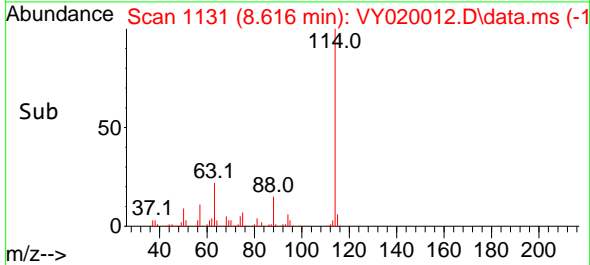
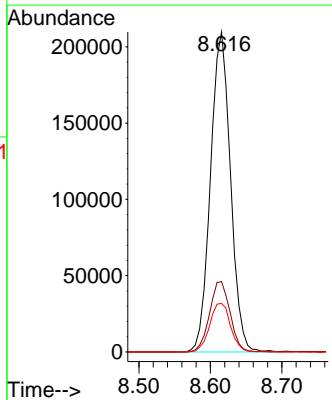
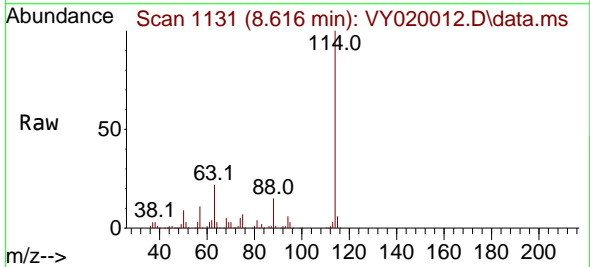
Instrument : MSVOA\_Y  
 ClientSampleId : BP-F23-VOC

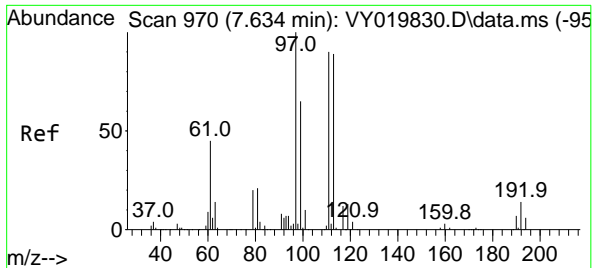
Tgt Ion: 65 Resp: 150762  
 Ion Ratio Lower Upper  
 65 100  
 67 51.2 0.0 109.6



#34  
 1,4-Difluorobenzene  
 Concen: 50.000 ug/l  
 RT: 8.616 min Scan# 1131  
 Delta R.T. 0.000 min  
 Lab File: VY020012.D  
 Acq: 24 Oct 2024 16:19

Tgt Ion:114 Resp: 407419  
 Ion Ratio Lower Upper  
 114 100  
 63 22.0 0.0 35.0  
 88 15.2 0.0 27.2

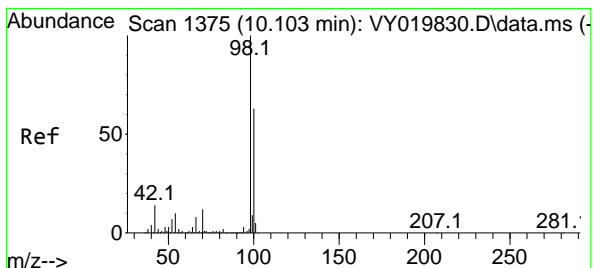
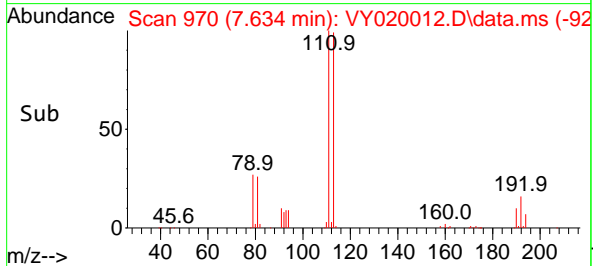
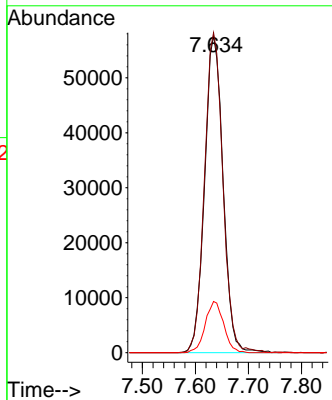
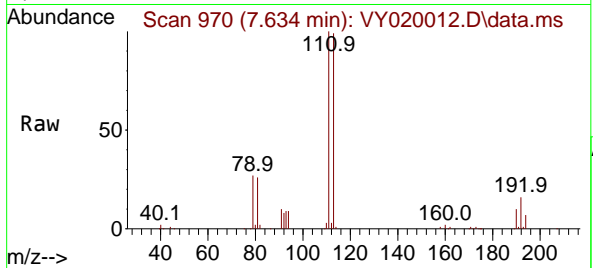




#35  
 Dibromofluoromethane  
 Concen: 51.748 ug/l  
 RT: 7.634 min Scan# 91  
 Delta R.T. 0.000 min  
 Lab File: VY020012.D  
 Acq: 24 Oct 2024 16:19

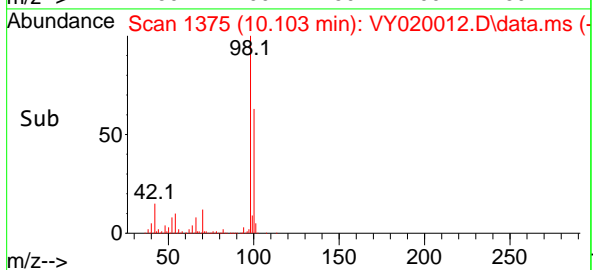
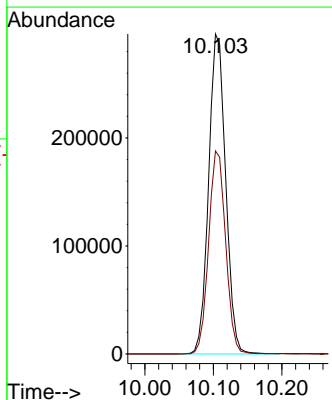
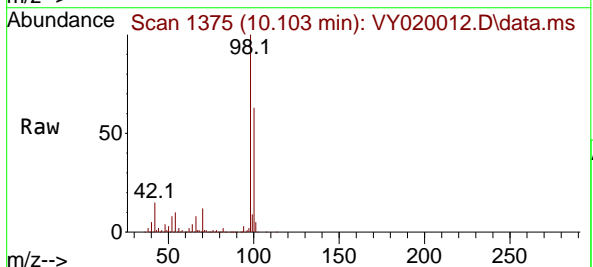
Instrument :  
 MSVOA\_Y  
 ClientSampleId :  
 BP-F23-VOC

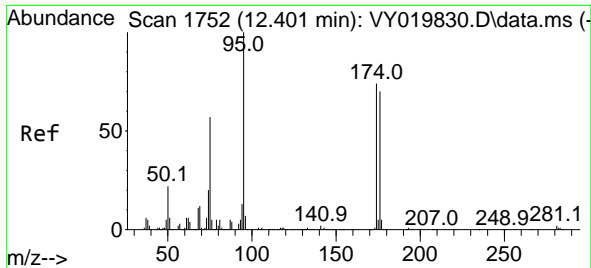
Tgt Ion	Resp	Lower	Upper
113	139125		
113	100		
111	100.8	82.2	123.4
192	16.2	15.9	23.9



#50  
 Toluene-d8  
 Concen: 51.528 ug/l  
 RT: 10.103 min Scan# 1375  
 Delta R.T. -0.006 min  
 Lab File: VY020012.D  
 Acq: 24 Oct 2024 16:19

Tgt Ion	Resp	Lower	Upper
98	511591		
98	100		
100	63.4	52.0	78.0



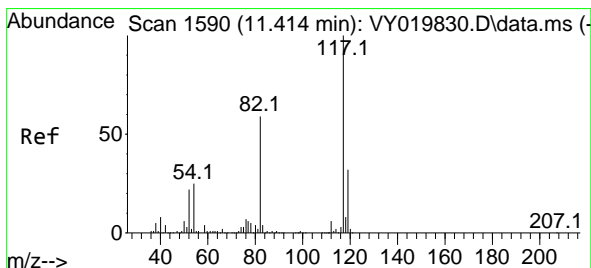
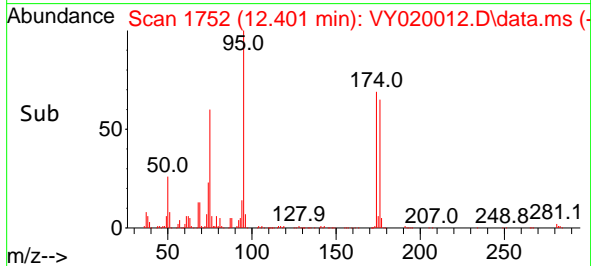
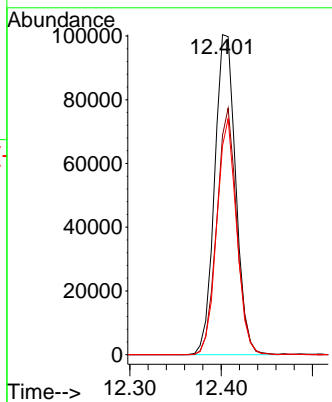
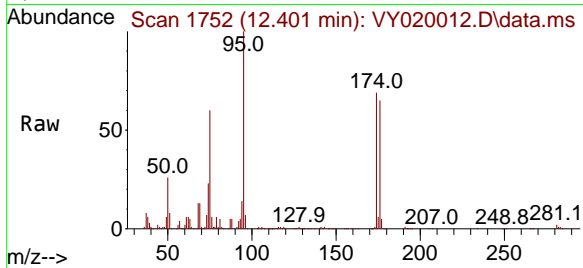


#62  
 4-Bromofluorobenzene  
 Concen: 44.861 ug/l  
 RT: 12.401 min Scan# 11  
 Delta R.T. -0.006 min  
 Lab File: VY020012.D  
 Acq: 24 Oct 2024 16:19

Instrument :  
 MSVOA\_Y  
 ClientSampleId :  
 BP-F23-VOC

Tgt Ion: 95 Resp: 160935

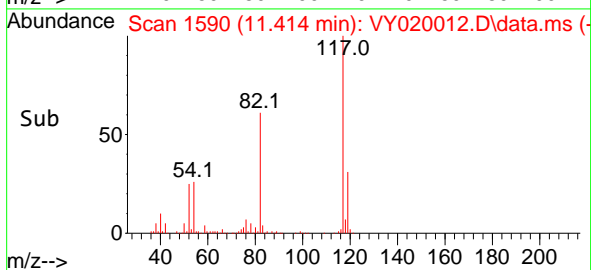
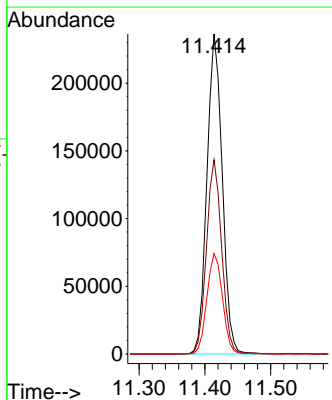
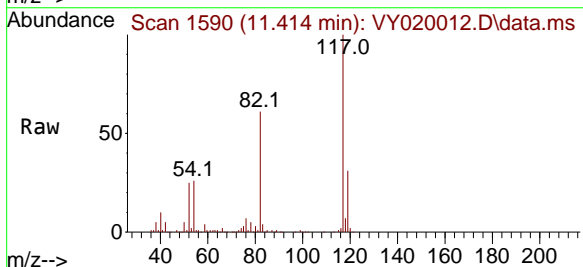
Ion	Ratio	Lower	Upper
95	100		
174	73.2	0.0	175.6
176	69.2	0.0	171.4

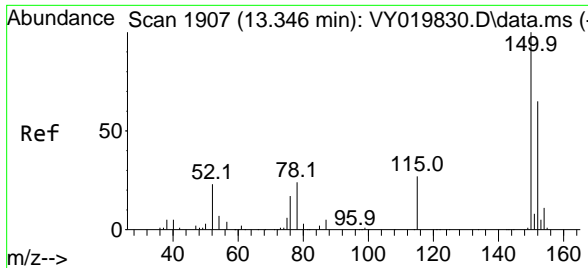


#63  
 Chlorobenzene-d5  
 Concen: 50.000 ug/l  
 RT: 11.414 min Scan# 1590  
 Delta R.T. -0.006 min  
 Lab File: VY020012.D  
 Acq: 24 Oct 2024 16:19

Tgt Ion: 117 Resp: 383251

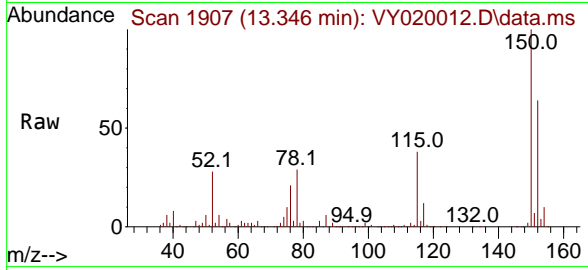
Ion	Ratio	Lower	Upper
117	100		
82	60.7	42.4	63.6
119	31.4	25.9	38.9





#72  
 1,4-Dichlorobenzene-d4  
 Concen: 50.000 ug/l  
 RT: 13.346 min Scan# 1907  
 Delta R.T. 0.000 min  
 Lab File: VY020012.D  
 Acq: 24 Oct 2024 16:19

Instrument : MSVOA\_Y  
 ClientSampleId : BP-F23-VOC



Tgt Ion:152 Resp: 142142

Ion	Ratio	Lower	Upper
152	100		
115	61.8	28.2	84.7
150	157.5	0.0	345.6

