

Data Path : Z:\voasrv\HPCHEM1\MSVOA\_Y\Data\VY103023\  
 Data File : VY016127.D  
 Acq On : 30 Oct 2023 12:39  
 Operator : SY/MD  
 Sample : 05073-01  
 Misc : 5.08g/5.0mL/MSVOA\_Y/SOIL  
 ALS Vial : 9 Sample Multiplier: 1

Instrument :  
 MSVOA\_Y  
 ClientSampleId :  
 OR-02-102523

Quant Time: Oct 31 01:28:46 2023  
 Quant Method : Z:\voasrv\HPCHEM1\MSVOA\_Y\methods\82Y102623S.M  
 Quant Title : SW846 8260  
 QLast Update : Fri Oct 27 04:12:29 2023  
 Response via : Initial Calibration

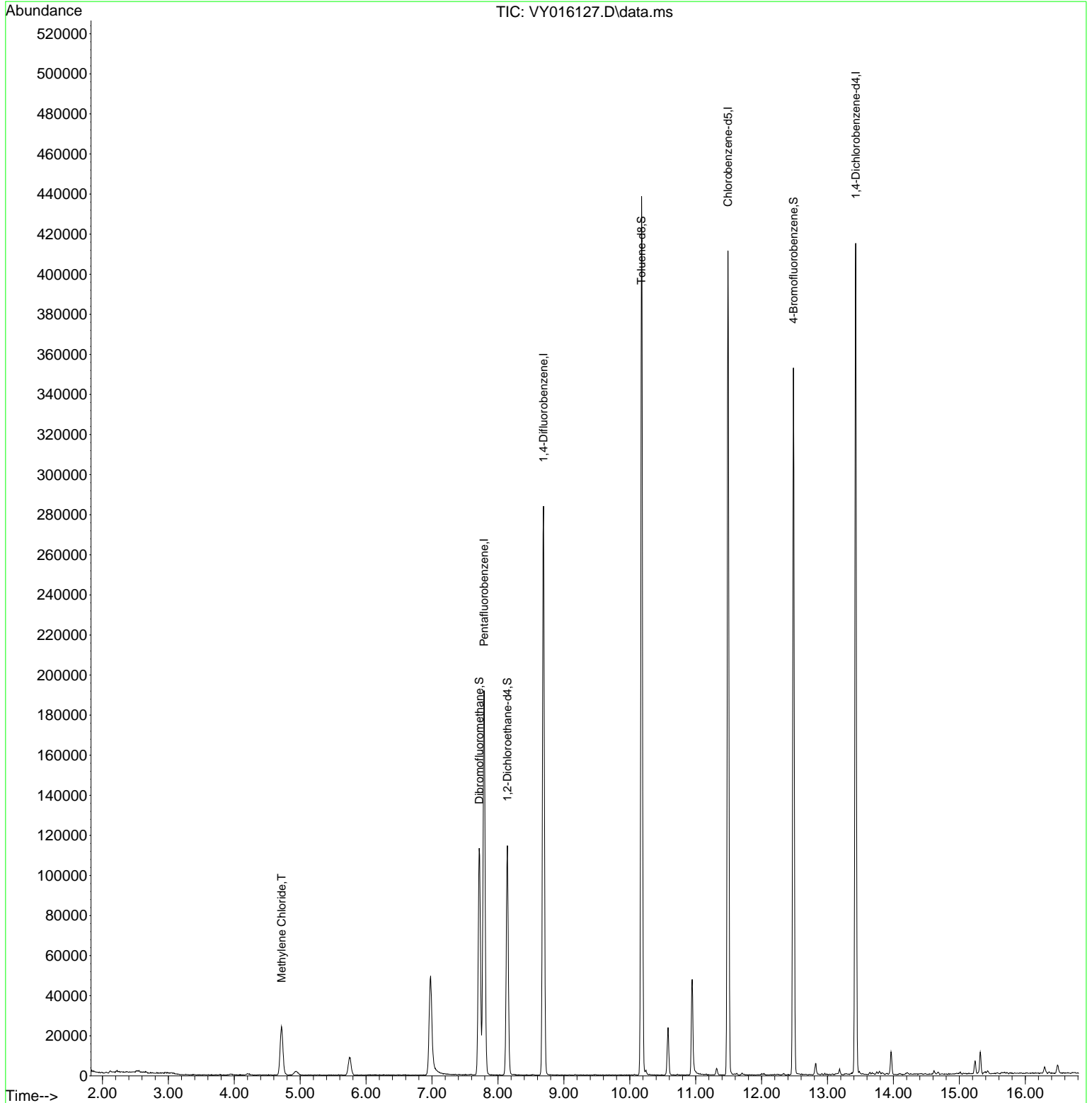
Compound	R.T.	QIon	Response	Conc	Units	Dev(Min)
-----						
Internal Standards						
1) Pentafluorobenzene	7.789	168	151081	50.000	ug/l	0.00
34) 1,4-Difluorobenzene	8.691	114	252525	50.000	ug/l	0.00
63) Chlorobenzene-d5	11.489	117	228433	50.000	ug/l	0.00
72) 1,4-Dichlorobenzene-d4	13.428	152	110698	50.000	ug/l	0.00
System Monitoring Compounds						
33) 1,2-Dichloroethane-d4	8.142	65	87391	58.172	ug/l	0.00
Spiked Amount	50.000	Range	50 - 163	Recovery	=	116.340%
35) Dibromofluoromethane	7.716	113	81746	51.278	ug/l	0.00
Spiked Amount	50.000	Range	54 - 147	Recovery	=	102.560%
50) Toluene-d8	10.179	98	292940	49.608	ug/l	0.00
Spiked Amount	50.000	Range	58 - 134	Recovery	=	99.220%
62) 4-Bromofluorobenzene	12.483	95	100879	49.802	ug/l	0.00
Spiked Amount	50.000	Range	30 - 143	Recovery	=	99.600%
Target Compounds						
20) Methylene Chloride	4.716	84	18871	6.871	ug/l	89
-----						

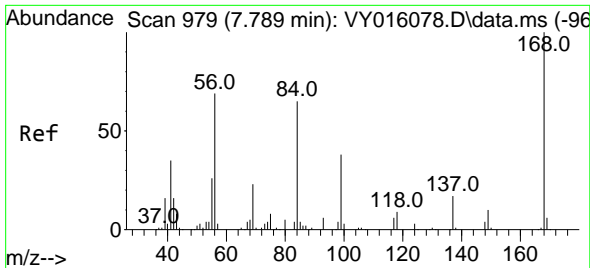
(#) = qualifier out of range (m) = manual integration (+) = signals summed

Data Path : Z:\voasrv\HPCHEM1\MSVOA\_Y\Data\VY103023\  
 Data File : VY016127.D  
 Acq On : 30 Oct 2023 12:39  
 Operator : SY/MD  
 Sample : 05073-01  
 Misc : 5.08g/5.0mL/MSVOA\_Y/SOIL  
 ALS Vial : 9 Sample Multiplier: 1

Instrument :  
 MSVOA\_Y  
 ClientSampleId :  
 OR-02-102523

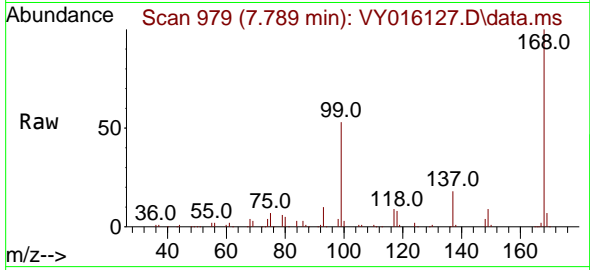
Quant Time: Oct 31 01:28:46 2023  
 Quant Method : Z:\voasrv\HPCHEM1\MSVOA\_Y\methods\82Y102623S.M  
 Quant Title : SW846 8260  
 QLast Update : Fri Oct 27 04:12:29 2023  
 Response via : Initial Calibration



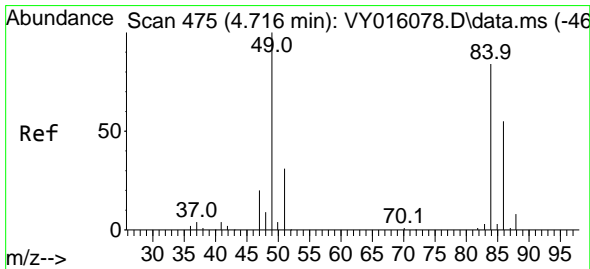
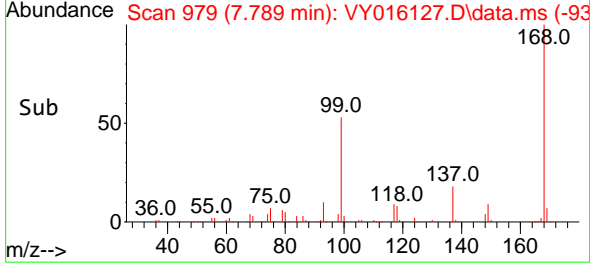
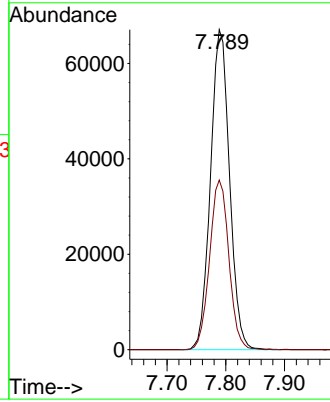


#1  
 Pentafluorobenzene  
 Concen: 50.000 ug/l  
 RT: 7.789 min Scan# 91  
 Delta R.T. -0.000 min  
 Lab File: VY016127.D  
 Acq: 30 Oct 2023 12:39

Instrument : MSVOA\_Y  
 Client Sample Id : OR-02-102523

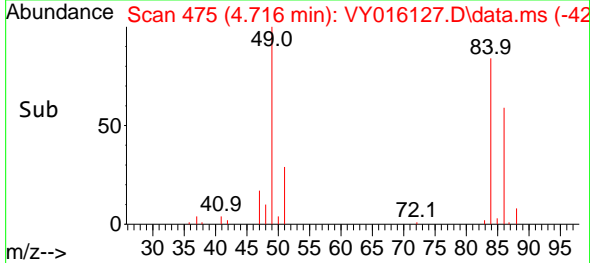
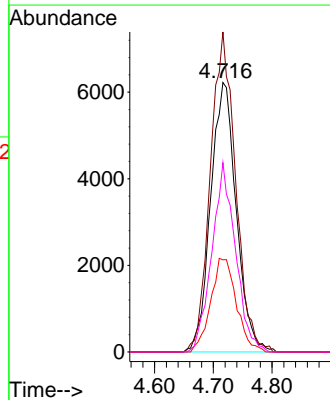
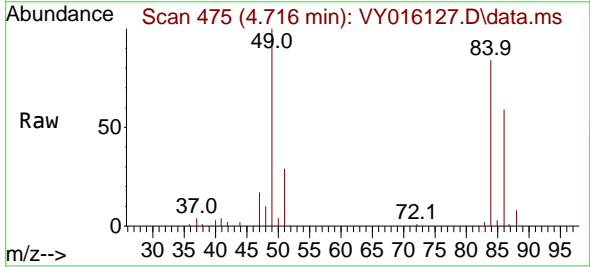


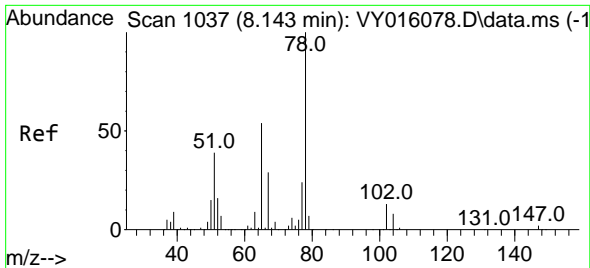
Tgt Ion: 168 Resp: 151081  
 Ion Ratio Lower Upper  
 168 100  
 99 53.0 43.4 65.0



#20  
 Methylene Chloride  
 Concen: 6.871 ug/l  
 RT: 4.716 min Scan# 475  
 Delta R.T. 0.000 min  
 Lab File: VY016127.D  
 Acq: 30 Oct 2023 12:39

Tgt Ion: 84 Resp: 18871  
 Ion Ratio Lower Upper  
 84 100  
 49 118.8 106.9 160.3  
 51 34.2 33.2 49.8  
 86 70.2 51.0 76.6

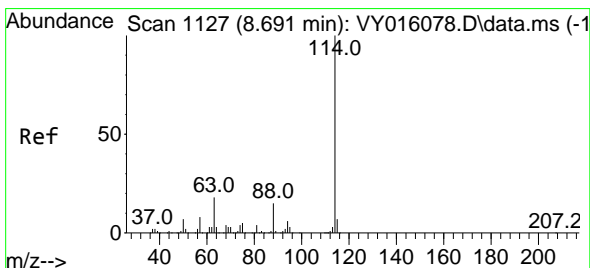
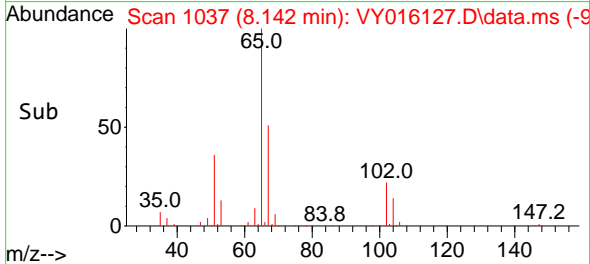
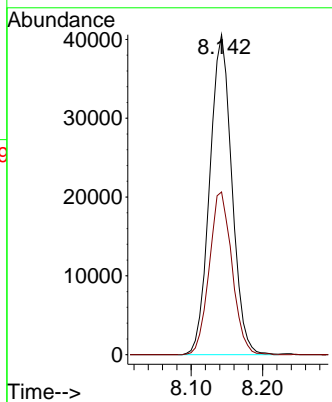
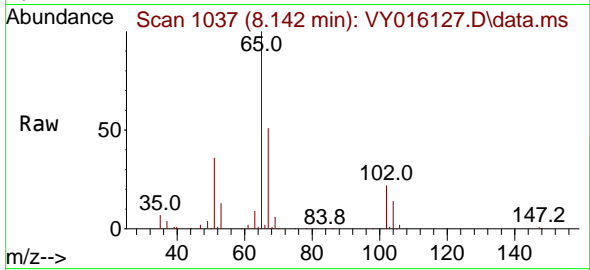




#33  
 1,2-Dichloroethane-d4  
 Concen: 58.172 ug/l  
 RT: 8.142 min Scan# 1037  
 Delta R.T. -0.000 min  
 Lab File: VY016127.D  
 Acq: 30 Oct 2023 12:39

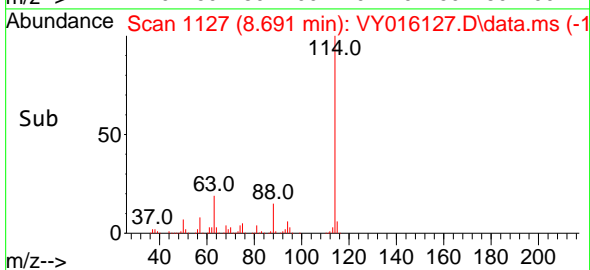
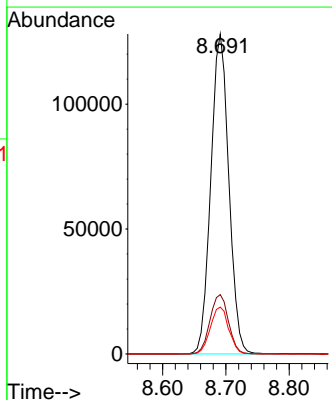
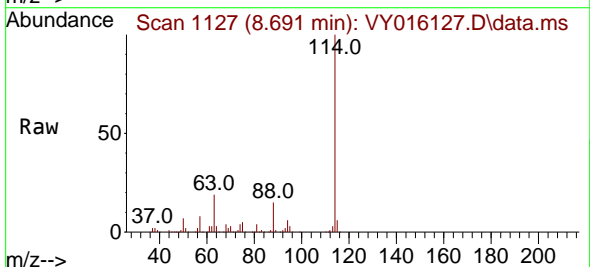
Instrument : MSVOA\_Y  
 ClientSampleId : OR-02-102523

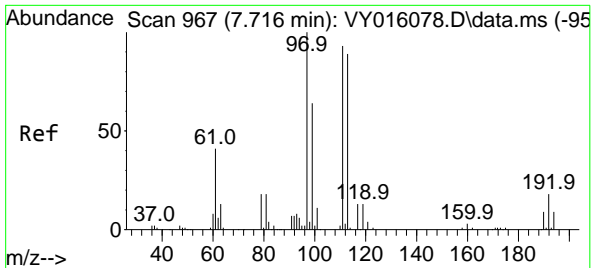
Tgt Ion: 65 Resp: 87391  
 Ion Ratio Lower Upper  
 65 100  
 67 52.1 0.0 101.8



#34  
 1,4-Difluorobenzene  
 Concen: 50.000 ug/l  
 RT: 8.691 min Scan# 1127  
 Delta R.T. -0.000 min  
 Lab File: VY016127.D  
 Acq: 30 Oct 2023 12:39

Tgt Ion: 114 Resp: 252525  
 Ion Ratio Lower Upper  
 114 100  
 63 18.6 0.0 42.4  
 88 14.7 0.0 30.6





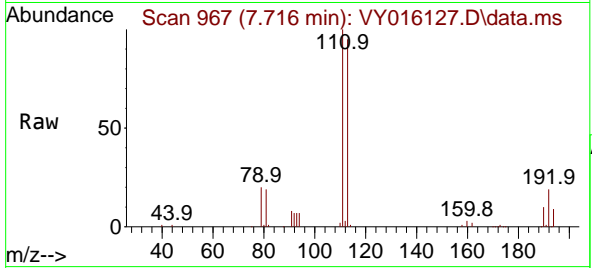
#35  
 Dibromofluoromethane  
 Concen: 51.278 ug/l  
 RT: 7.716 min Scan# 967  
 Delta R.T. -0.000 min  
 Lab File: VY016127.D  
 Acq: 30 Oct 2023 12:39

Instrument :

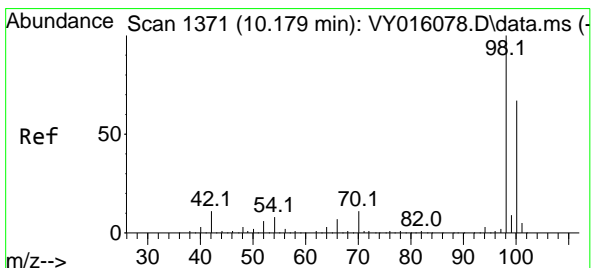
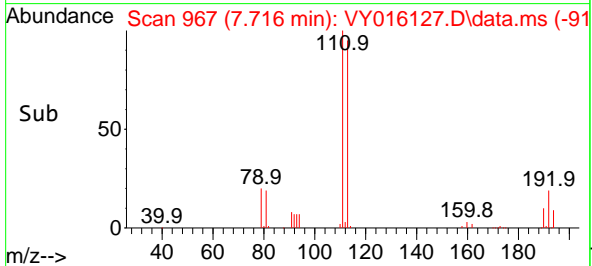
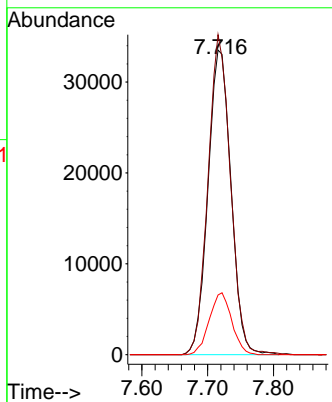
MSVOA\_Y

ClientSampleId :

OR-02-102523

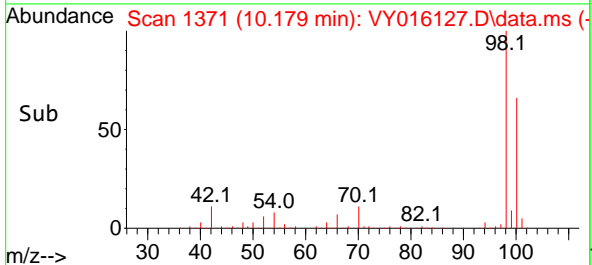
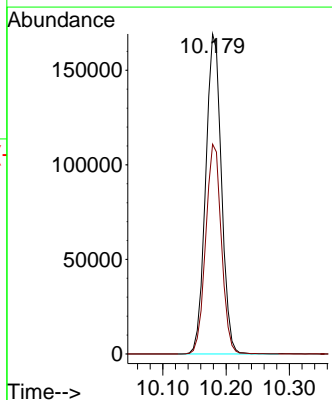
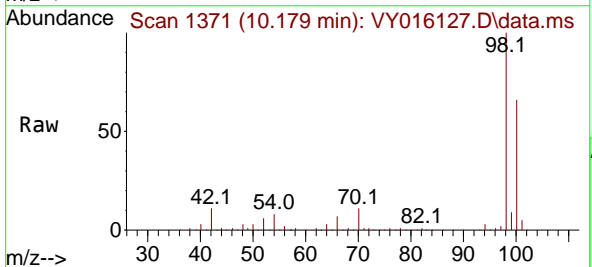


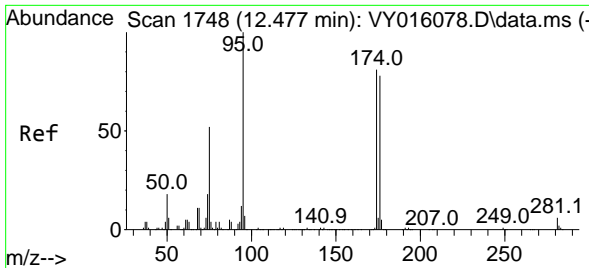
Tgt Ion:113 Resp: 81746  
 Ion Ratio Lower Upper  
 113 100  
 111 102.4 81.3 121.9  
 192 19.9 16.9 25.3



#50  
 Toluene-d8  
 Concen: 49.608 ug/l  
 RT: 10.179 min Scan# 1371  
 Delta R.T. -0.000 min  
 Lab File: VY016127.D  
 Acq: 30 Oct 2023 12:39

Tgt Ion: 98 Resp: 292940  
 Ion Ratio Lower Upper  
 98 100  
 100 65.4 50.1 75.1



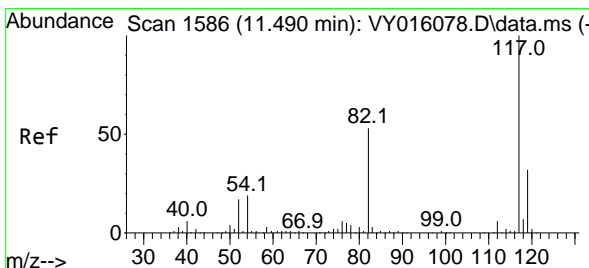
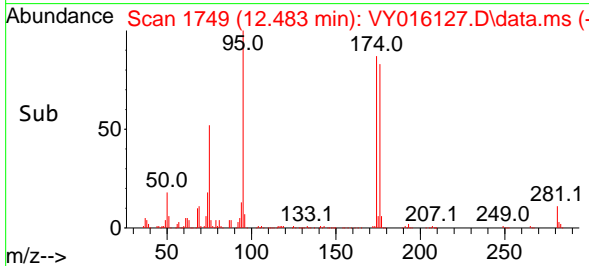
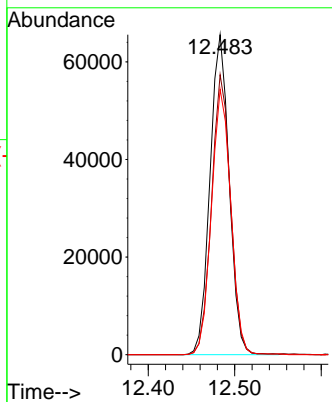
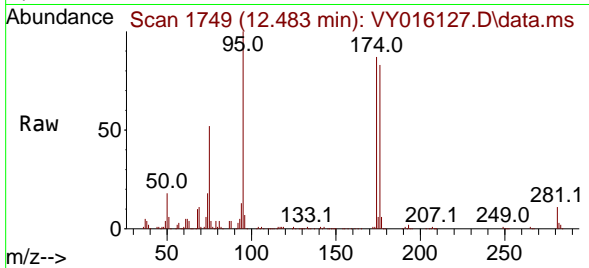


#62  
 4-Bromofluorobenzene  
 Concen: 49.802 ug/l  
 RT: 12.483 min Scan# 1749  
 Delta R.T. 0.006 min  
 Lab File: VY016127.D  
 Acq: 30 Oct 2023 12:39

Instrument : MSVOA\_Y  
 ClientSampleId : OR-02-102523

Tgt Ion: 95 Resp: 100879

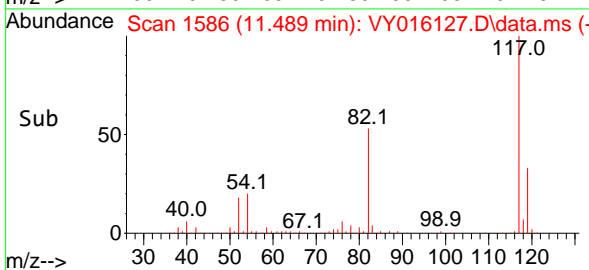
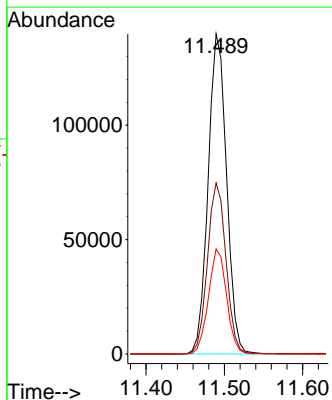
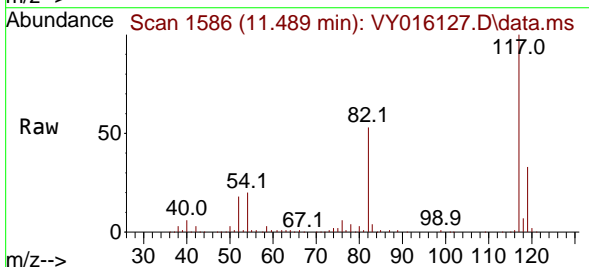
Ion	Ratio	Lower	Upper
95	100		
174	87.0	0.0	178.2
176	83.8	0.0	173.8

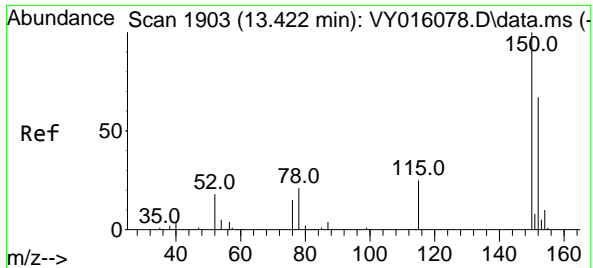


#63  
 Chlorobenzene-d5  
 Concen: 50.000 ug/l  
 RT: 11.489 min Scan# 1586  
 Delta R.T. -0.000 min  
 Lab File: VY016127.D  
 Acq: 30 Oct 2023 12:39

Tgt Ion: 117 Resp: 228433

Ion	Ratio	Lower	Upper
117	100		
82	53.4	43.4	65.0
119	32.9	26.3	39.5





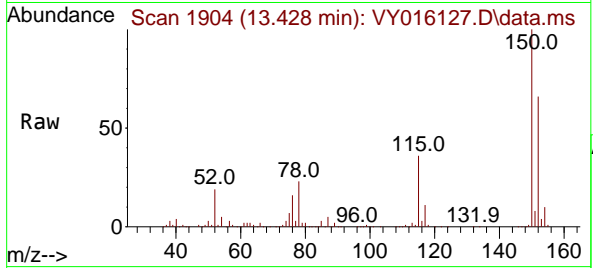
#72  
 1,4-Dichlorobenzene-d4  
 Concen: 50.000 ug/l  
 RT: 13.428 min Scan# 1904  
 Delta R.T. 0.006 min  
 Lab File: VY016127.D  
 Acq: 30 Oct 2023 12:39

Instrument :

MSVOA\_Y

ClientSampleId :

OR-02-102523



Tgt Ion:152 Resp: 110698

Ion	Ratio	Lower	Upper
152	100		
115	56.5	28.8	86.5
150	154.5	0.0	348.8

