

Data Path : Z:\voasrv\HPCHEM1\MSVOA_Y\Data\VY110123\
 Data File : VY016166.D
 Acq On : 01 Nov 2023 14:16
 Operator : SY/MD
 Sample : 05102-08
 Misc : 4.07g/5.0mL/MSVOA_Y/SOIL
 ALS Vial : 11 Sample Multiplier: 1

Instrument :
 MSVOA_Y
 ClientSampleId :
 67S-SB11-1218

Quant Time: Nov 02 02:25:05 2023
 Quant Method : Z:\voasrv\HPCHEM1\MSVOA_Y\methods\82Y103123S.M
 Quant Title : SW846 8260
 QLast Update : Wed Nov 01 03:33:29 2023
 Response via : Initial Calibration

Compound	R.T.	QIon	Response	Conc	Units	Dev(Min)

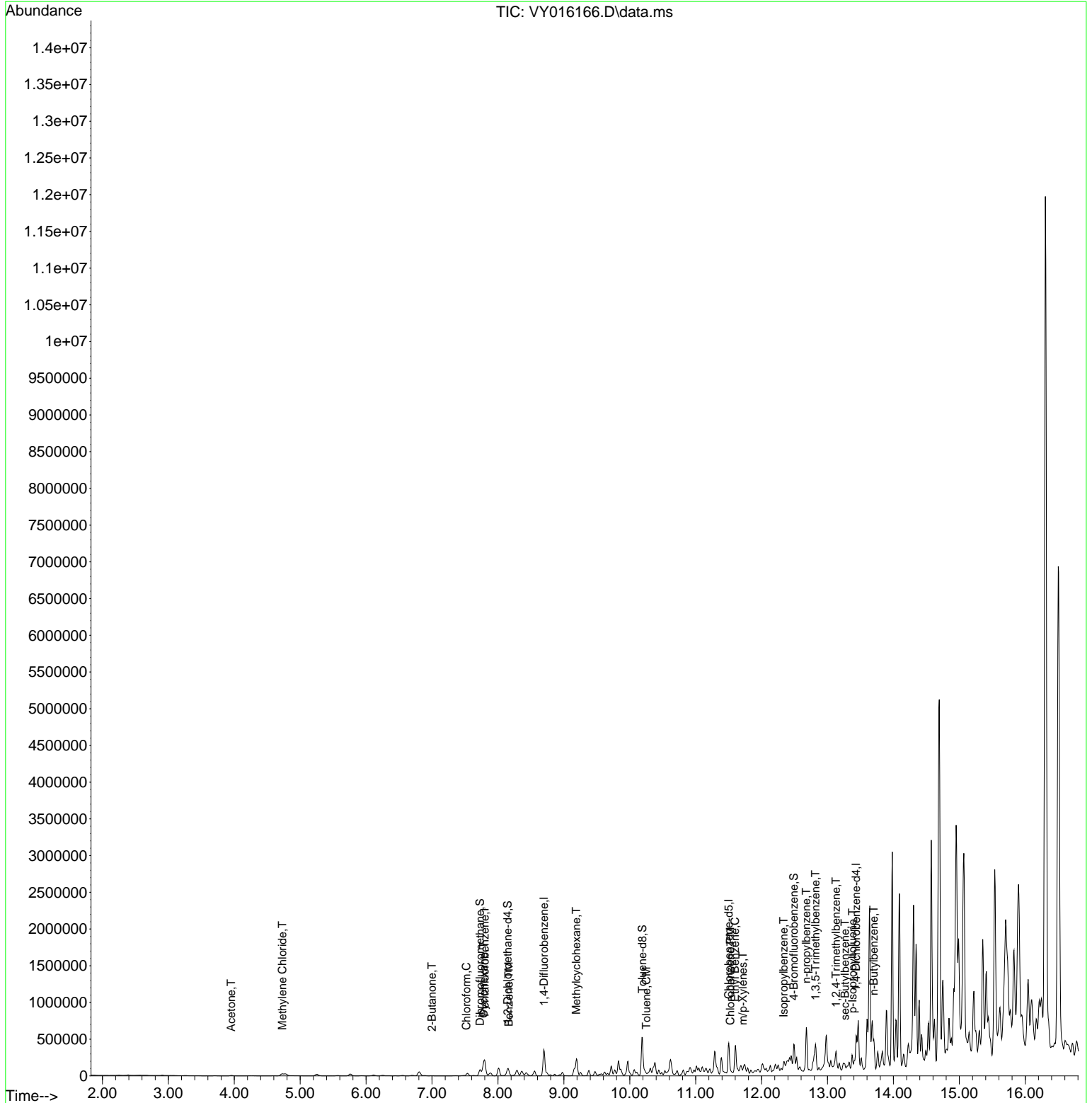
Internal Standards						
1) Pentafluorobenzene	7.801	168	129461	50.000	ug/l	0.00
34) 1,4-Difluorobenzene	8.697	114	214978	50.000	ug/l	0.00
63) Chlorobenzene-d5	11.501	117	197311	50.000	ug/l	0.00
72) 1,4-Dichlorobenzene-d4	13.434	152	90717	50.000	ug/l	0.00
System Monitoring Compounds						
33) 1,2-Dichloroethane-d4	8.148	65	71102	58.694	ug/l	0.00
Spiked Amount	50.000	Range	50 - 163	Recovery	=	117.380%
35) Dibromofluoromethane	7.728	113	58515	45.656	ug/l	0.00
Spiked Amount	50.000	Range	54 - 147	Recovery	=	91.320%
50) Toluene-d8	10.191	98	258208	50.814	ug/l	0.00
Spiked Amount	50.000	Range	58 - 134	Recovery	=	101.620%
62) 4-Bromofluorobenzene	12.489	95	93998	54.097	ug/l	0.00
Spiked Amount	50.000	Range	30 - 143	Recovery	=	108.200%
Target Compounds						
						Qvalue
16) Acetone	3.954	43	12533	49.509	ug/l	98
20) Methylene Chloride	4.728	84	17677	12.034	ug/l #	83
25) 2-Butanone	6.996	43	3023	9.045	ug/l	93
30) Chloroform	7.520	83	7237	3.134	ug/l	95
31) Cyclohexane	7.783	56	30826	16.553	ug/l #	79
39) Methylcyclohexane	9.191	83	94504	42.780	ug/l	94
40) Benzene	8.167	78	18928	3.563	ug/l	96
52) Toluene	10.252	92	7793	2.264	ug/l	93
65) Chlorobenzene	11.526	112	9791	2.498	ug/l	96
67) Ethyl Benzene	11.599	91	208038	29.671	ug/l	98
68) m/p-Xylenes	11.715	106	4761	1.757	ug/l	83
73) Isopropylbenzene	12.337	105	74061	10.883	ug/l	100
78) n-propylbenzene	12.678	91	440780	54.788	ug/l	99
80) 1,3,5-Trimethylbenzene	12.818	105	125307	22.729	ug/l	96
84) 1,2,4-Trimethylbenzene	13.129	105	110077	20.178	ug/l	98
85) sec-Butylbenzene	13.263	105	47569	6.570	ug/l #	49
86) p-Isopropyltoluene	13.379	119	46374	7.728	ug/l	99
89) n-Butylbenzene	13.702	91	242839	44.044	ug/l #	76

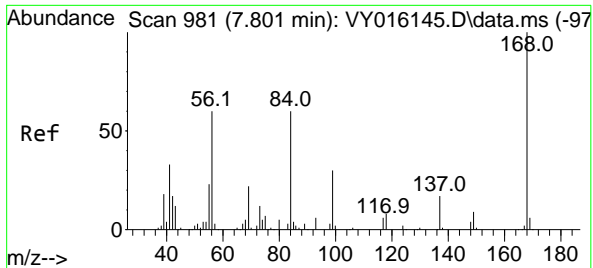
(#) = qualifier out of range (m) = manual integration (+) = signals summed

Data Path : Z:\voasrv\HPCHEM1\MSVOA_Y\Data\VY110123\
 Data File : VY016166.D
 Acq On : 01 Nov 2023 14:16
 Operator : SY/MD
 Sample : 05102-08
 Misc : 4.07g/5.0mL/MSVOA_Y/SOIL
 ALS Vial : 11 Sample Multiplier: 1

Instrument :
 MSVOA_Y
 ClientSampleId :
 67S-SB11-1218

Quant Time: Nov 02 02:25:05 2023
 Quant Method : Z:\voasrv\HPCHEM1\MSVOA_Y\methods\82Y103123S.M
 Quant Title : SW846 8260
 QLast Update : Wed Nov 01 03:33:29 2023
 Response via : Initial Calibration

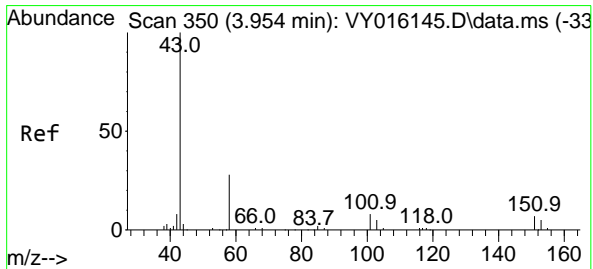
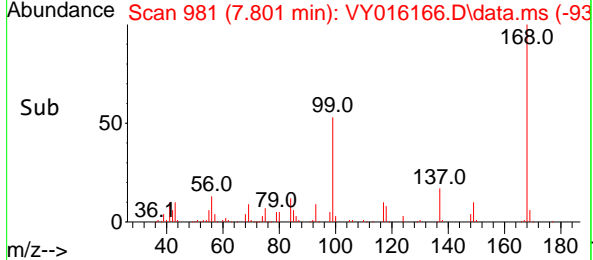
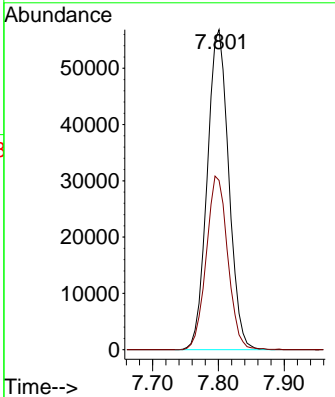
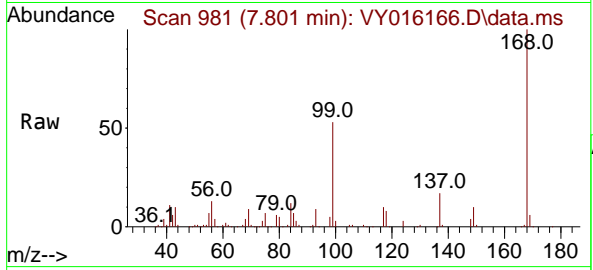




#1
 Pentafluorobenzene
 Concen: 50.000 ug/l
 RT: 7.801 min Scan# 91
 Delta R.T. -0.000 min
 Lab File: VY016166.D
 Acq: 01 Nov 2023 14:16

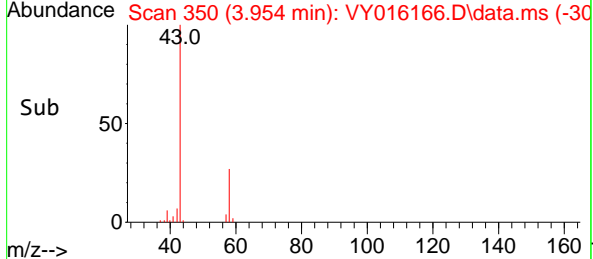
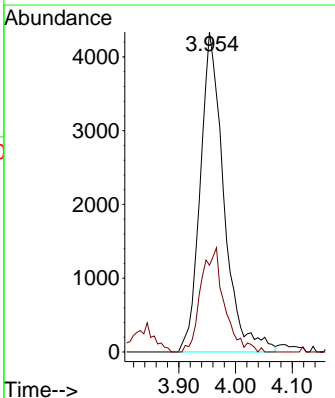
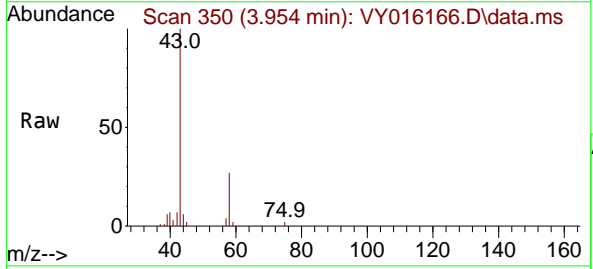
Instrument : MSVOA_Y
 ClientSampleId : 67S-SB11-1218

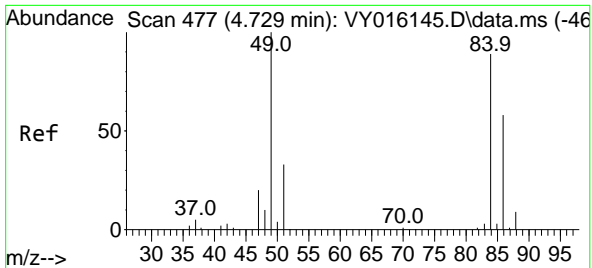
Tgt Ion:168 Resp: 129461
 Ion Ratio Lower Upper
 168 100
 99 52.9 43.4 65.0



#16
 Acetone
 Concen: 49.509 ug/l
 RT: 3.954 min Scan# 350
 Delta R.T. -0.000 min
 Lab File: VY016166.D
 Acq: 01 Nov 2023 14:16

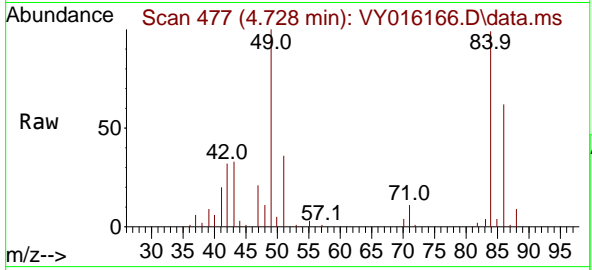
Tgt Ion: 43 Resp: 12533
 Ion Ratio Lower Upper
 43 100
 58 27.1 22.7 34.1





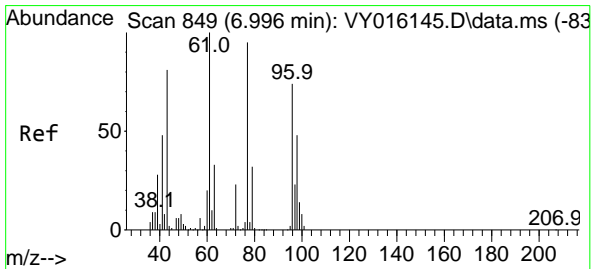
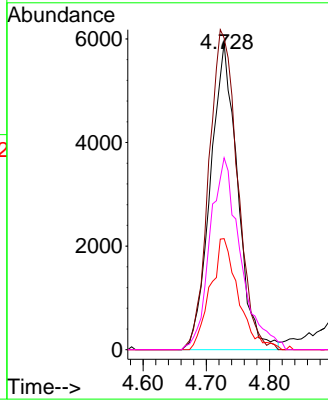
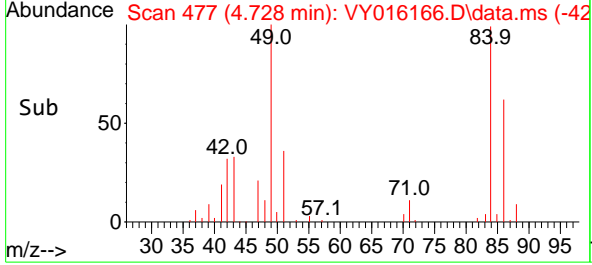
#20
 Methylene Chloride
 Concen: 12.034 ug/l
 RT: 4.728 min Scan# 41
 Delta R.T. -0.001 min
 Lab File: VY016166.D
 Acq: 01 Nov 2023 14:16

Instrument :
 MSVOA_Y
 ClientSampleId :
 67S-SB11-1218

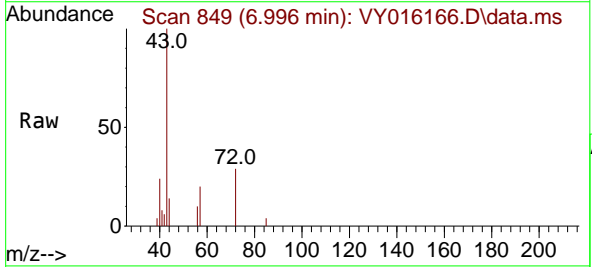


Tgt Ion: 84 Resp: 17677

Ion	Ratio	Lower	Upper
84	100		
49	101.5	106.9	160.3#
51	36.2	33.2	49.8
86	62.5	51.0	76.6

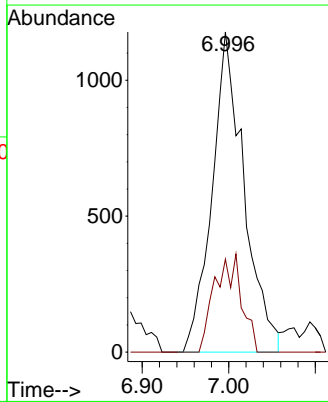
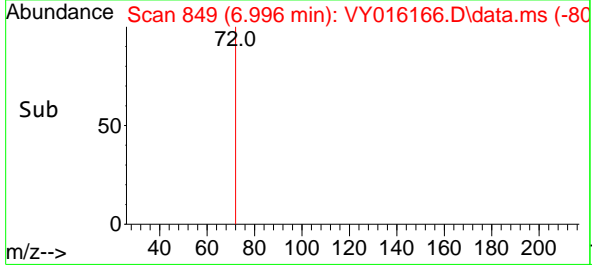


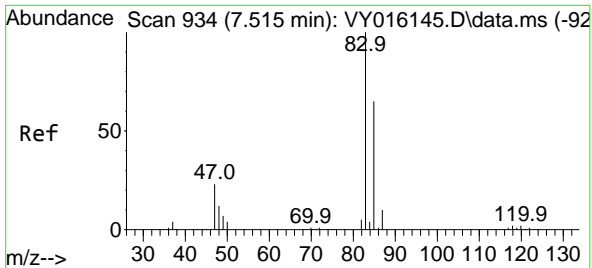
#25
 2-Butanone
 Concen: 9.045 ug/l
 RT: 6.996 min Scan# 849
 Delta R.T. -0.000 min
 Lab File: VY016166.D
 Acq: 01 Nov 2023 14:16



Tgt Ion: 43 Resp: 3023

Ion	Ratio	Lower	Upper
43	100		
72	29.0	20.5	30.7

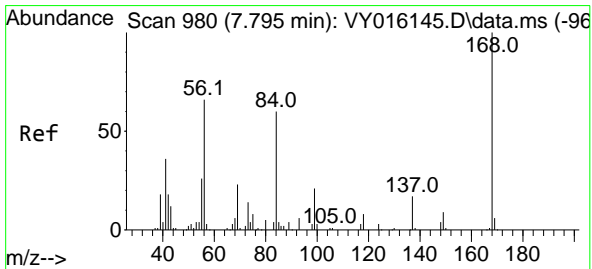
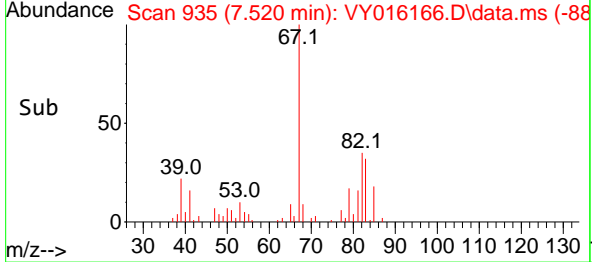
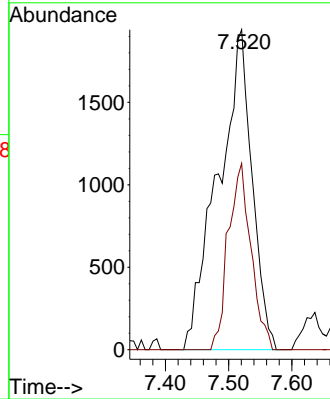
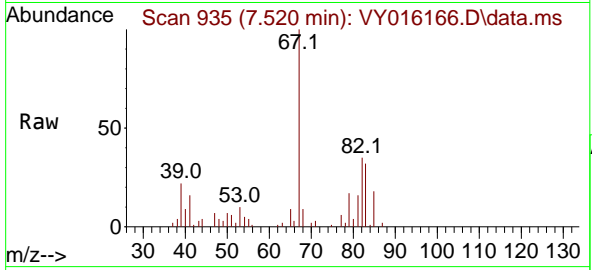




#30
 Chloroform
 Concen: 3.134 ug/l
 RT: 7.520 min Scan# 91
 Delta R.T. 0.006 min
 Lab File: VY016166.D
 Acq: 01 Nov 2023 14:16

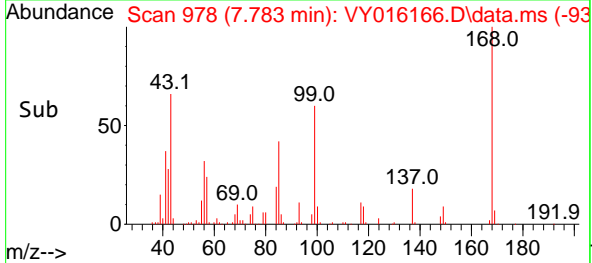
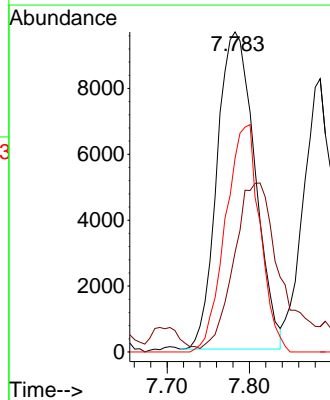
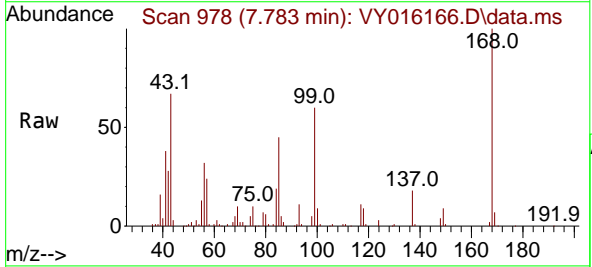
Instrument : MSVOA_Y
 ClientSampleId : 67S-SB11-1218

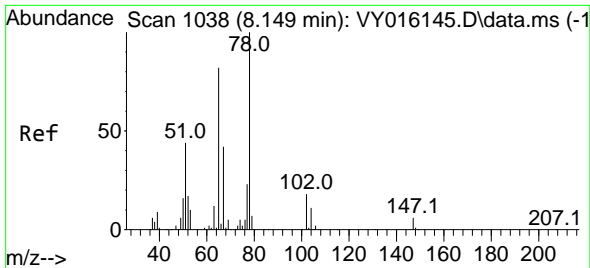
Tgt Ion: 83 Resp: 7237
 Ion Ratio Lower Upper
 83 100
 85 58.2 49.7 74.5



#31
 Cyclohexane
 Concen: 16.553 ug/l
 RT: 7.783 min Scan# 978
 Delta R.T. -0.012 min
 Lab File: VY016166.D
 Acq: 01 Nov 2023 14:16

Tgt Ion: 56 Resp: 30826
 Ion Ratio Lower Upper
 56 100
 69 27.3 27.8 41.6#
 84 61.2 66.4 99.6#

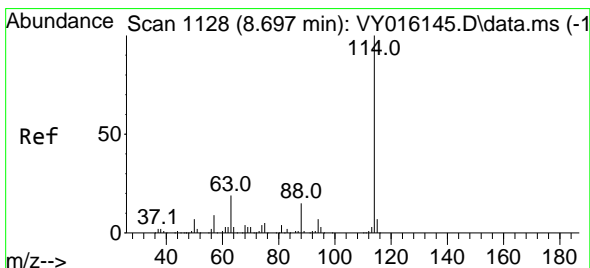
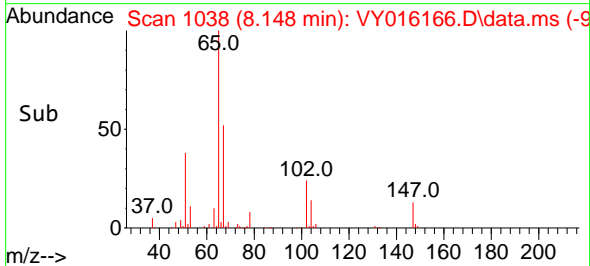
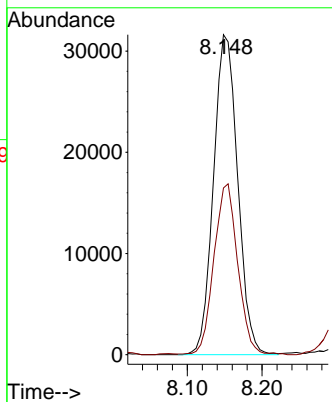
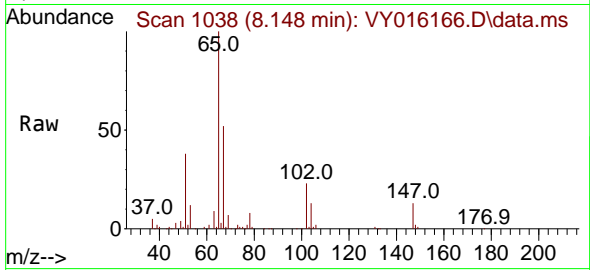




#33
 1,2-Dichloroethane-d4
 Concen: 58.694 ug/l
 RT: 8.148 min Scan# 1038
 Delta R.T. -0.000 min
 Lab File: VY016166.D
 Acq: 01 Nov 2023 14:16

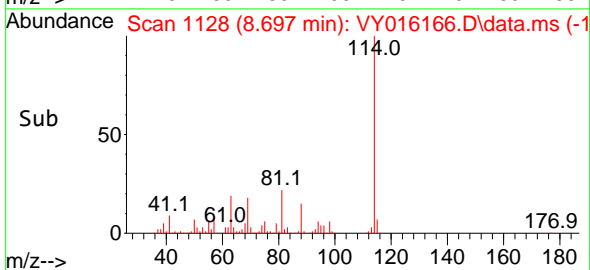
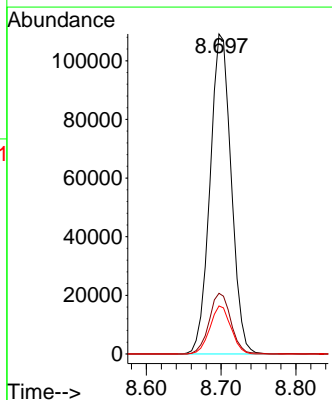
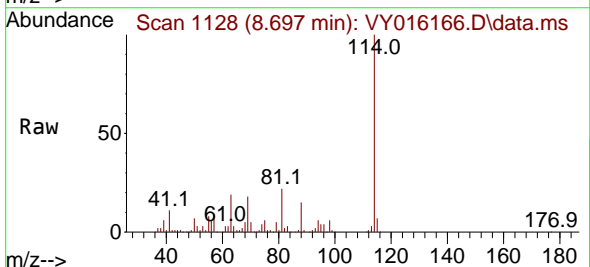
Instrument : MSVOA_Y
 ClientSampleId : 67S-SB11-1218

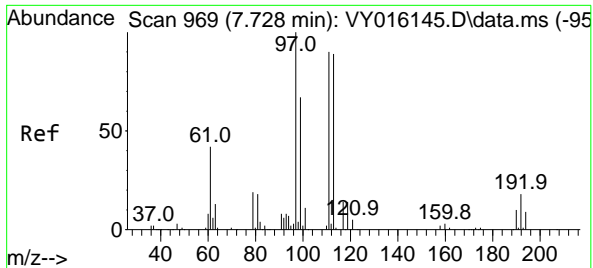
Tgt Ion: 65 Resp: 71102
 Ion Ratio Lower Upper
 65 100
 67 52.7 0.0 101.8



#34
 1,4-Difluorobenzene
 Concen: 50.000 ug/l
 RT: 8.697 min Scan# 1128
 Delta R.T. -0.000 min
 Lab File: VY016166.D
 Acq: 01 Nov 2023 14:16

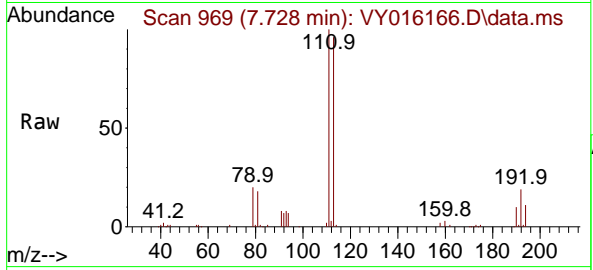
Tgt Ion:114 Resp: 214978
 Ion Ratio Lower Upper
 114 100
 63 19.0 0.0 42.4
 88 15.0 0.0 30.6





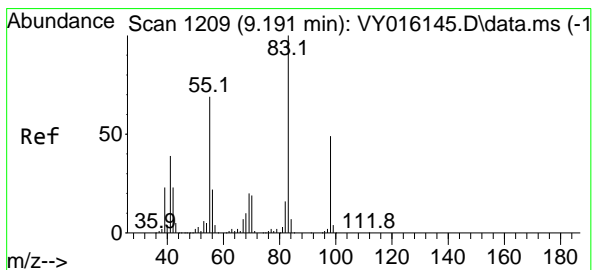
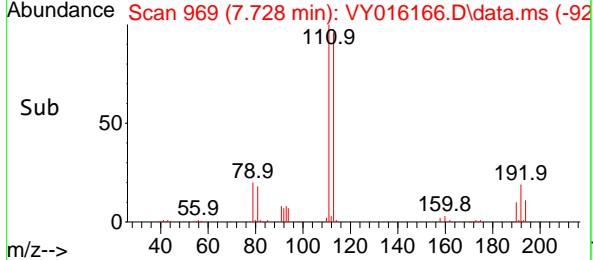
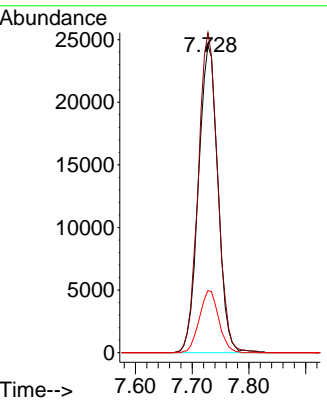
#35
 Dibromofluoromethane
 Concen: 45.656 ug/l
 RT: 7.728 min Scan# 969
 Delta R.T. -0.000 min
 Lab File: VY016166.D
 Acq: 01 Nov 2023 14:16

Instrument : MSVOA_Y
 ClientSampleId : 67S-SB11-1218



Tgt Ion: 113 Resp: 58515

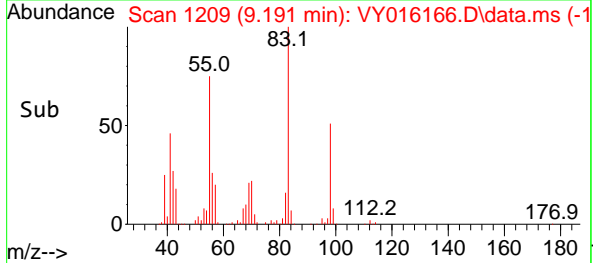
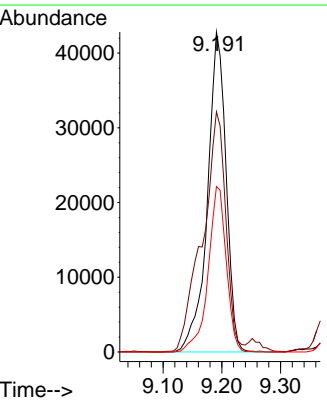
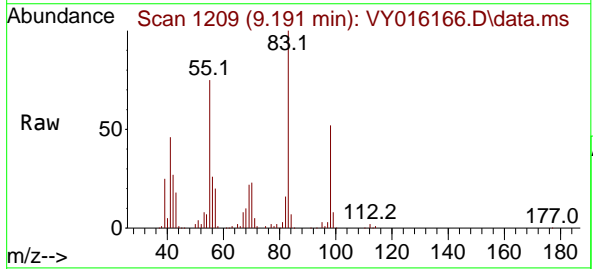
Ion	Ratio	Lower	Upper
113	100		
111	103.8	81.3	121.9
192	20.1	16.9	25.3

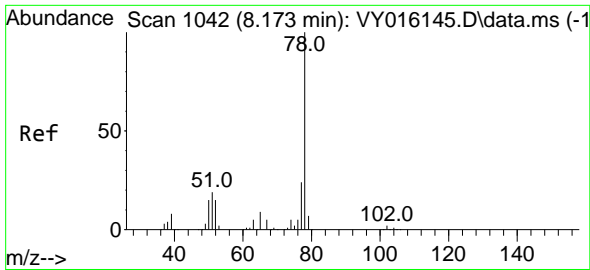


#39
 Methylcyclohexane
 Concen: 42.780 ug/l
 RT: 9.191 min Scan# 1209
 Delta R.T. -0.000 min
 Lab File: VY016166.D
 Acq: 01 Nov 2023 14:16

Tgt Ion: 83 Resp: 94504

Ion	Ratio	Lower	Upper
83	100		
55	74.8	63.0	94.4
98	51.7	37.4	56.2

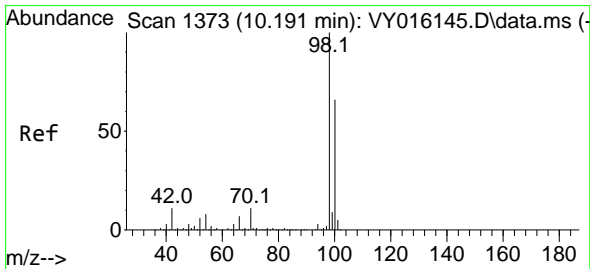
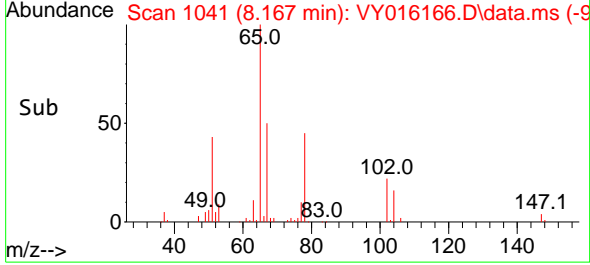
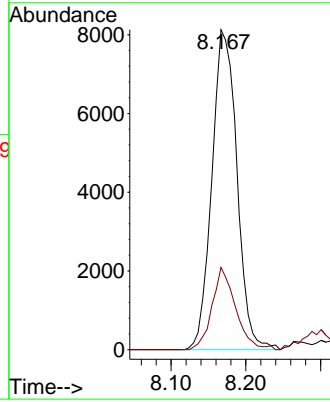
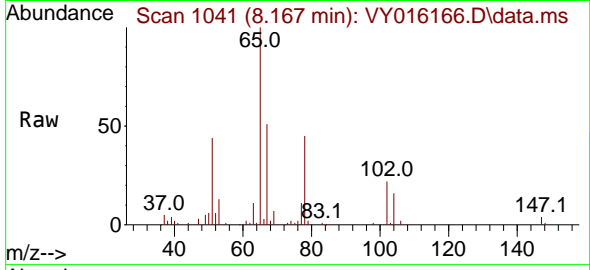




#40
Benzene
Concen: 3.563 ug/l
RT: 8.167 min Scan# 1041
Delta R.T. -0.006 min
Lab File: VY016166.D
Acq: 01 Nov 2023 14:16

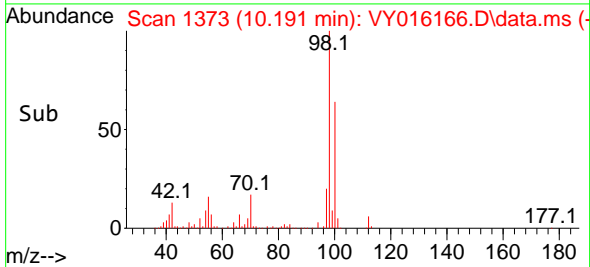
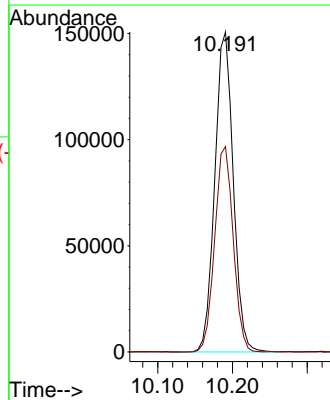
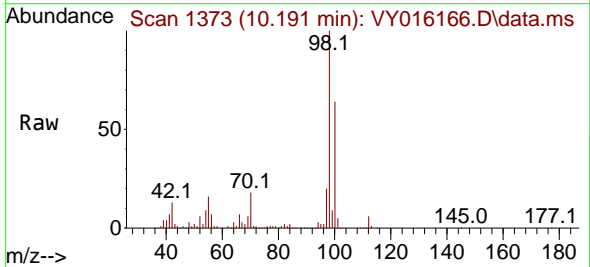
Instrument : MSVOA_Y
ClientSampleId : 67S-SB11-1218

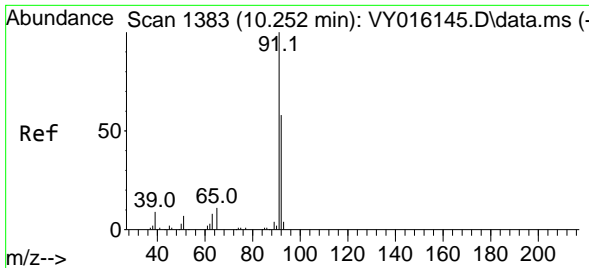
Tgt Ion: 78 Resp: 18928
Ion Ratio Lower Upper
78 100
77 25.7 19.0 28.6



#50
Toluene-d8
Concen: 50.814 ug/l
RT: 10.191 min Scan# 1373
Delta R.T. -0.000 min
Lab File: VY016166.D
Acq: 01 Nov 2023 14:16

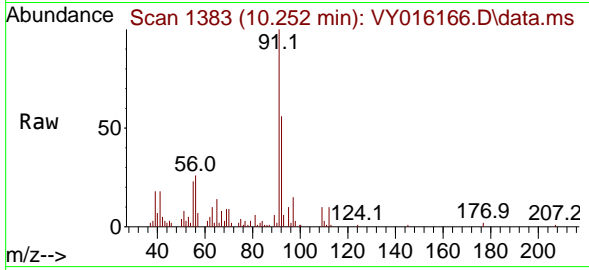
Tgt Ion: 98 Resp: 258208
Ion Ratio Lower Upper
98 100
100 64.4 50.1 75.1



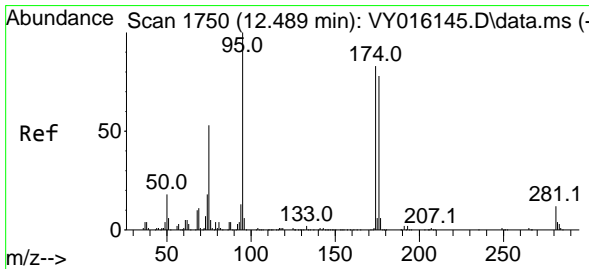
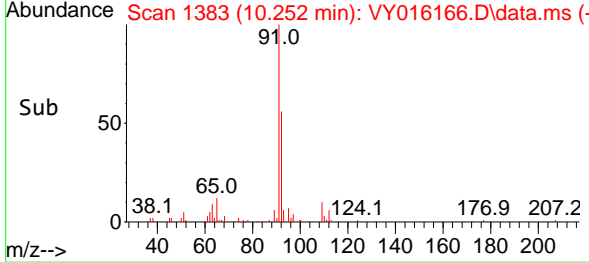
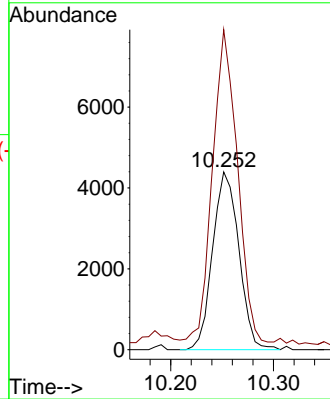


#52
 Toluene
 Concen: 2.264 ug/l
 RT: 10.252 min Scan# 1383
 Delta R.T. -0.000 min
 Lab File: VY016166.D
 Acq: 01 Nov 2023 14:16

Instrument : MSVOA_Y
 ClientSampleId : 67S-SB11-1218

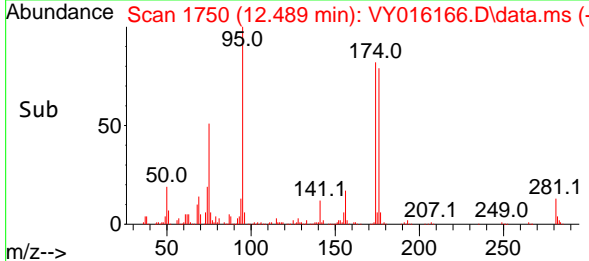
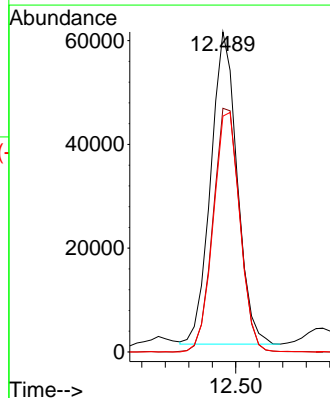
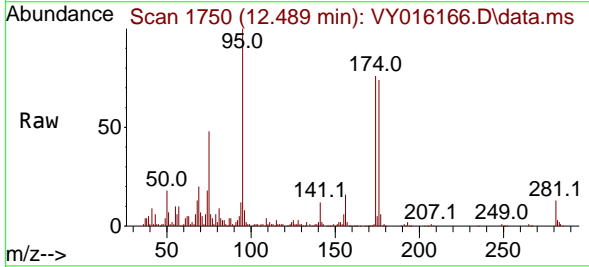


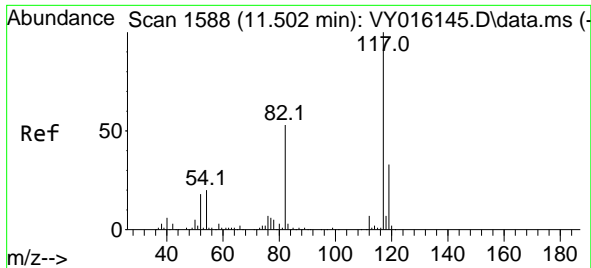
Tgt Ion: 92 Resp: 7793
 Ion Ratio Lower Upper
 92 100
 91 169.7 143.8 215.6



#62
 4-Bromofluorobenzene
 Concen: 54.097 ug/l
 RT: 12.489 min Scan# 1750
 Delta R.T. -0.000 min
 Lab File: VY016166.D
 Acq: 01 Nov 2023 14:16

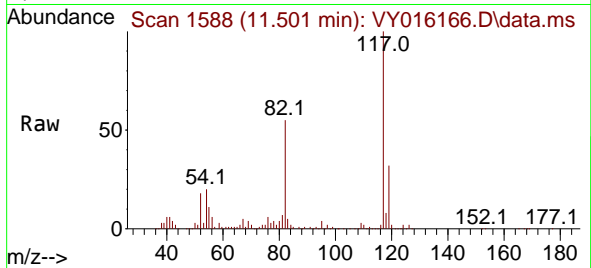
Tgt Ion: 95 Resp: 93998
 Ion Ratio Lower Upper
 95 100
 174 79.5 0.0 178.2
 176 77.8 0.0 173.8



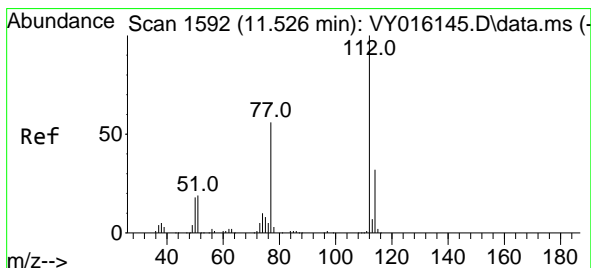
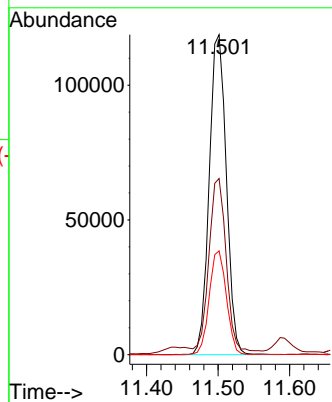
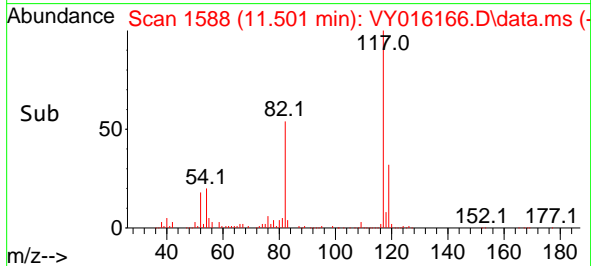


#63
 Chlorobenzene-d5
 Concen: 50.000 ug/l
 RT: 11.501 min Scan# 111
 Delta R.T. -0.000 min
 Lab File: VY016166.D
 Acq: 01 Nov 2023 14:16

Instrument : MSVOA_Y
 ClientSampleId : 67S-SB11-1218

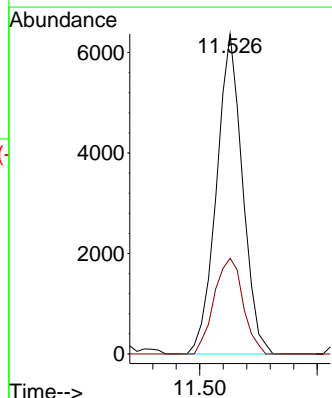
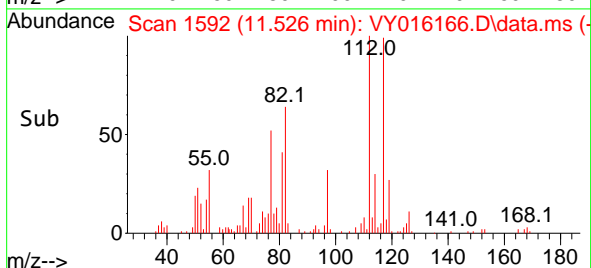
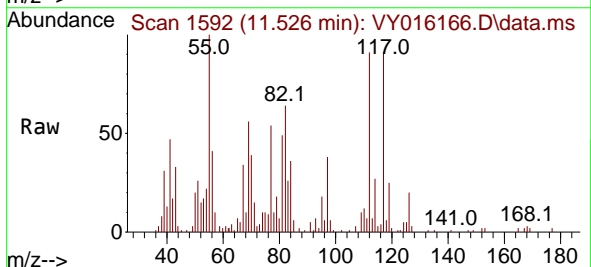


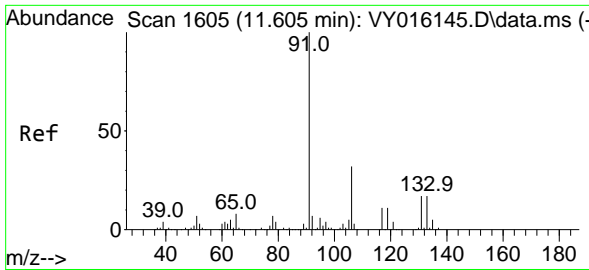
Tgt Ion:117 Resp: 197311
 Ion Ratio Lower Upper
 117 100
 82 52.9 43.4 65.0
 119 32.4 26.3 39.5



#65
 Chlorobenzene
 Concen: 2.498 ug/l
 RT: 11.526 min Scan# 1592
 Delta R.T. -0.000 min
 Lab File: VY016166.D
 Acq: 01 Nov 2023 14:16

Tgt Ion:112 Resp: 9791
 Ion Ratio Lower Upper
 112 100
 114 29.9 25.5 38.3

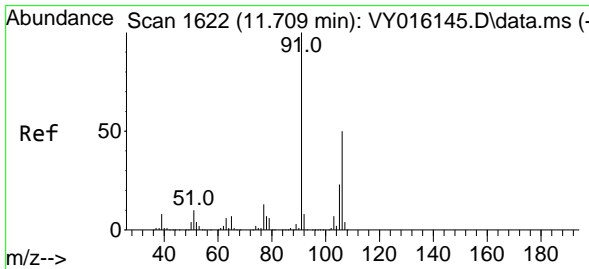
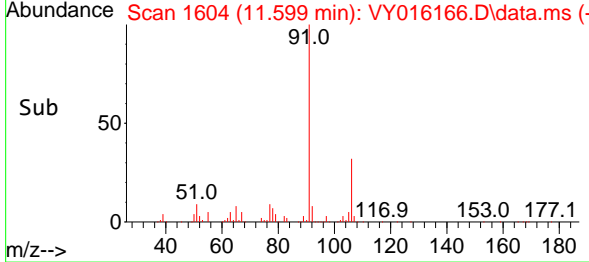
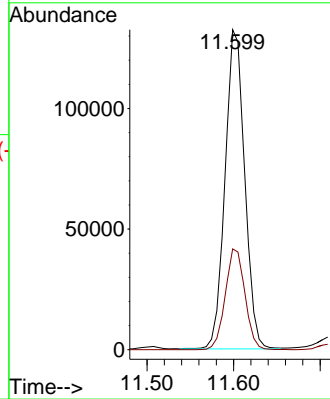
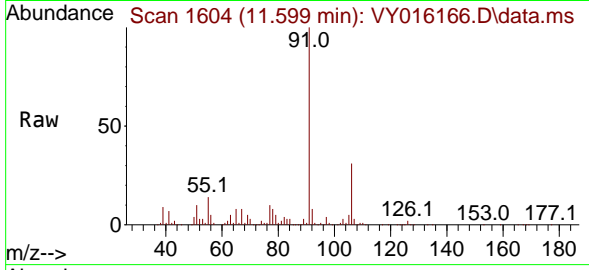




#67
 Ethyl Benzene
 Concen: 29.671 ug/l
 RT: 11.599 min Scan# 1604
 Delta R.T. -0.006 min
 Lab File: VY016166.D
 Acq: 01 Nov 2023 14:16

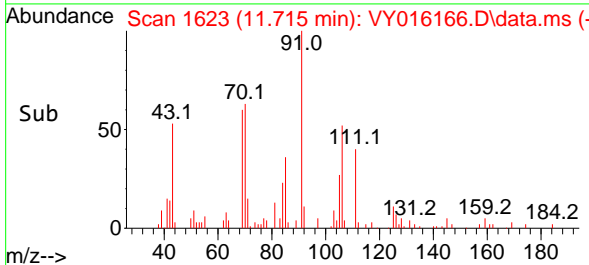
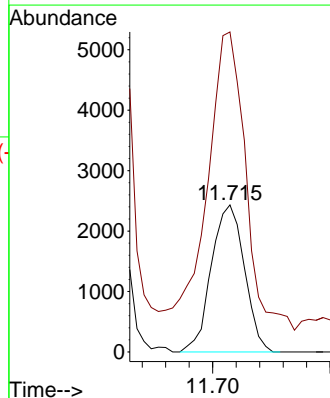
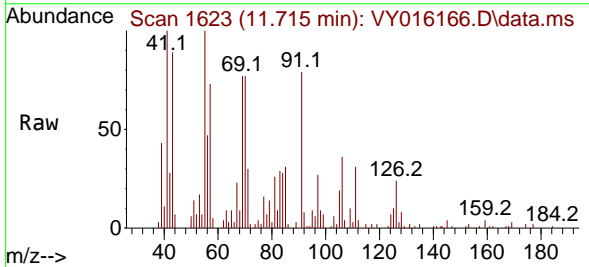
Instrument : MSVOA_Y
 ClientSampleId : 67S-SB11-1218

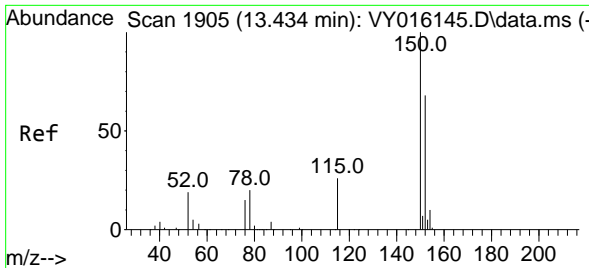
Tgt Ion: 91 Resp: 208038
 Ion Ratio Lower Upper
 91 100
 106 31.6 24.6 36.8



#68
 m/p-Xylenes
 Concen: 1.757 ug/l
 RT: 11.715 min Scan# 1623
 Delta R.T. 0.006 min
 Lab File: VY016166.D
 Acq: 01 Nov 2023 14:16

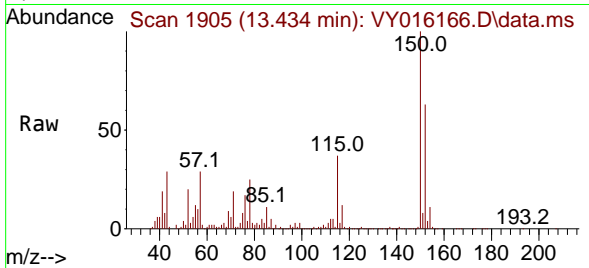
Tgt Ion:106 Resp: 4761
 Ion Ratio Lower Upper
 106 100
 91 233.9 166.1 249.1



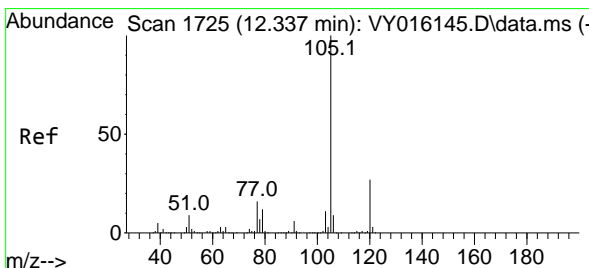
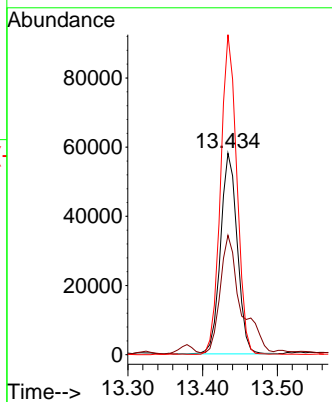
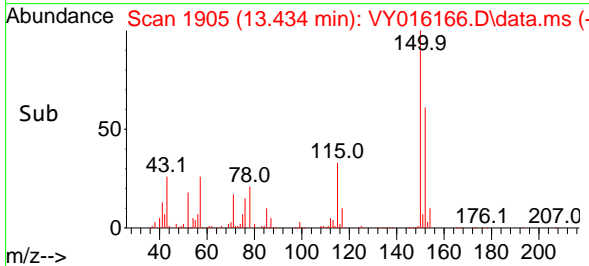


#72
 1,4-Dichlorobenzene-d4
 Concen: 50.000 ug/l
 RT: 13.434 min Scan# 1905
 Delta R.T. -0.000 min
 Lab File: VY016166.D
 Acq: 01 Nov 2023 14:16

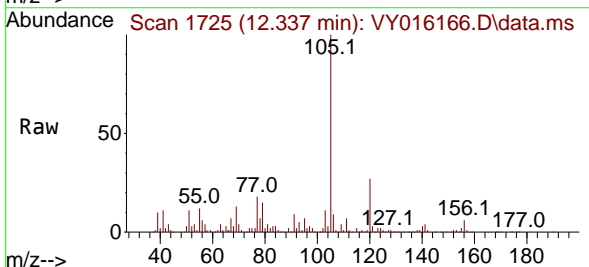
Instrument : MSVOA_Y
 ClientSampleId : 67S-SB11-1218



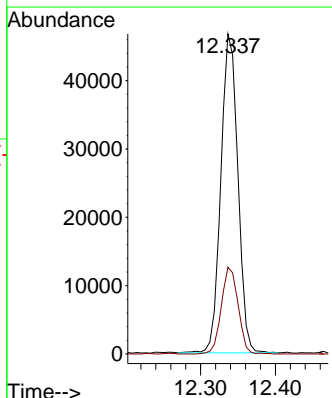
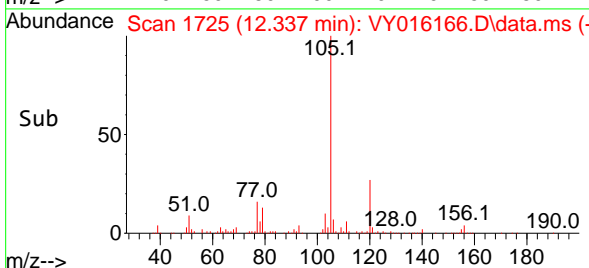
Tgt Ion:152 Resp: 90717
 Ion Ratio Lower Upper
 152 100
 115 71.2 28.8 86.5
 150 154.5 0.0 348.8

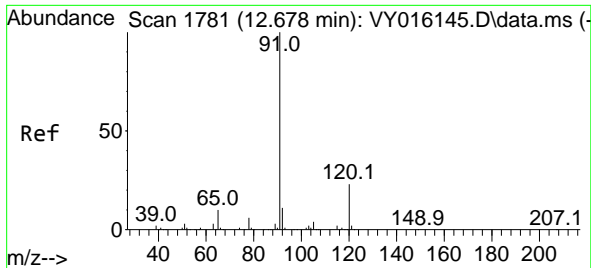


#73
 Isopropylbenzene
 Concen: 10.883 ug/l
 RT: 12.337 min Scan# 1725
 Delta R.T. -0.000 min
 Lab File: VY016166.D
 Acq: 01 Nov 2023 14:16



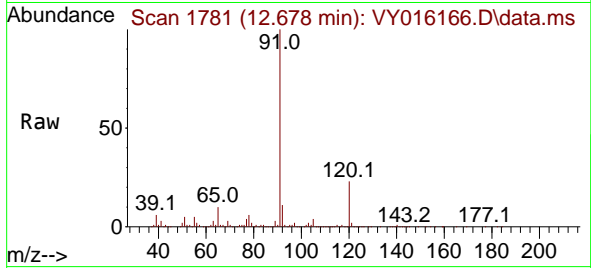
Tgt Ion:105 Resp: 74061
 Ion Ratio Lower Upper
 105 100
 120 26.8 13.3 39.9



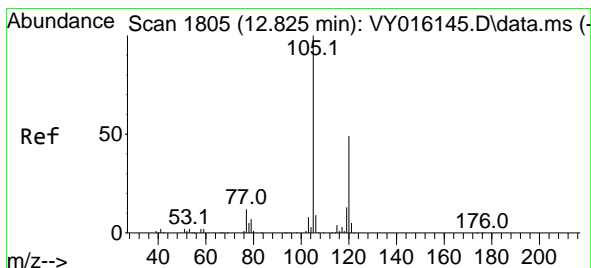
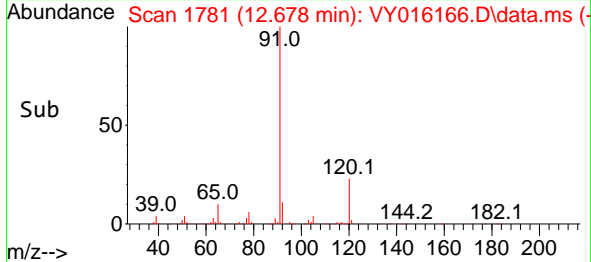
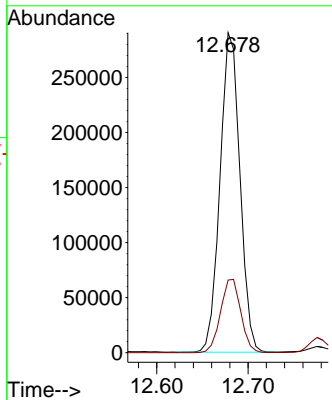


#78
 n-propylbenzene
 Concen: 54.788 ug/l
 RT: 12.678 min Scan# 1781
 Delta R.T. -0.000 min
 Lab File: VY016166.D
 Acq: 01 Nov 2023 14:16

Instrument : MSVOA_Y
 ClientSampleId : 67S-SB11-1218

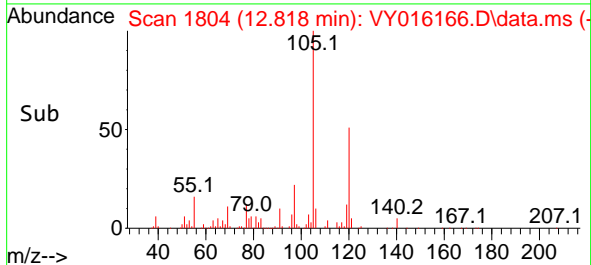
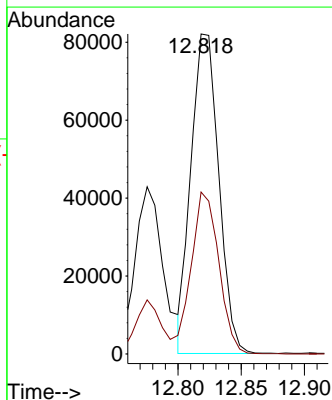
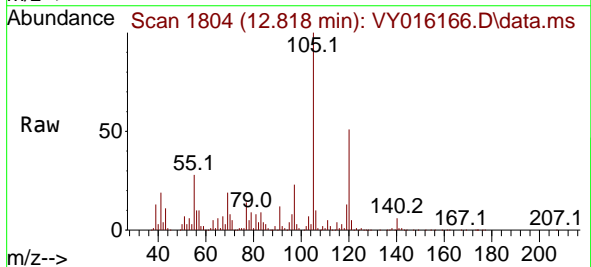


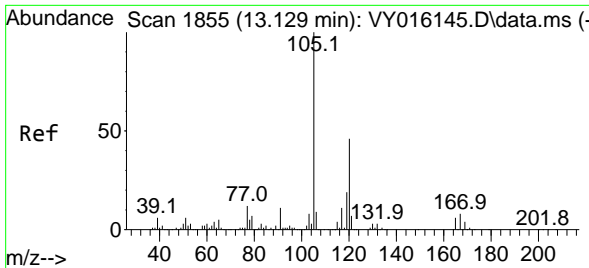
Tgt Ion: 91 Resp: 440780
 Ion Ratio Lower Upper
 91 100
 120 23.3 11.5 34.4



#80
 1,3,5-Trimethylbenzene
 Concen: 22.729 ug/l
 RT: 12.818 min Scan# 1804
 Delta R.T. -0.006 min
 Lab File: VY016166.D
 Acq: 01 Nov 2023 14:16

Tgt Ion: 105 Resp: 125307
 Ion Ratio Lower Upper
 105 100
 120 50.8 23.9 71.7

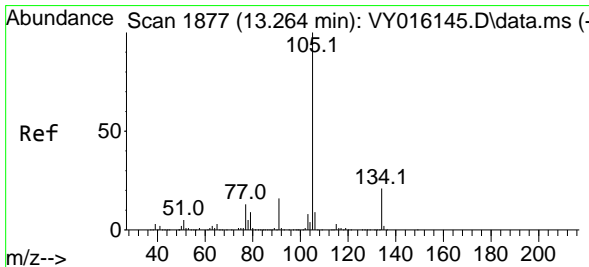
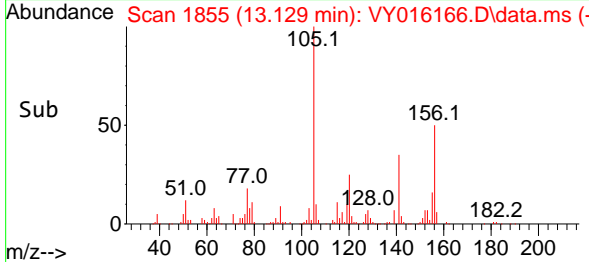
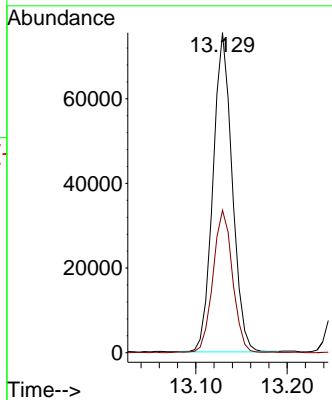
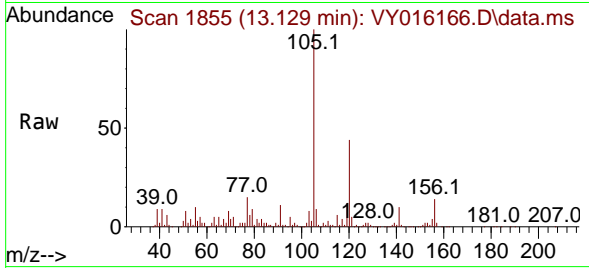




#84
 1,2,4-Trimethylbenzene
 Concen: 20.178 ug/l
 RT: 13.129 min Scan# 1855
 Delta R.T. -0.000 min
 Lab File: VY016166.D
 Acq: 01 Nov 2023 14:16

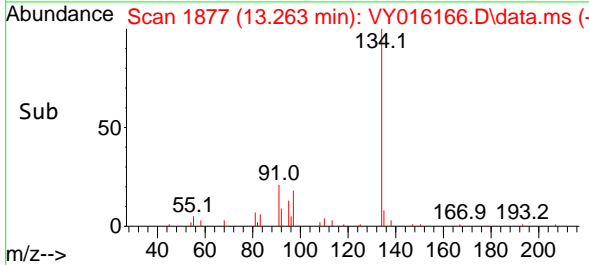
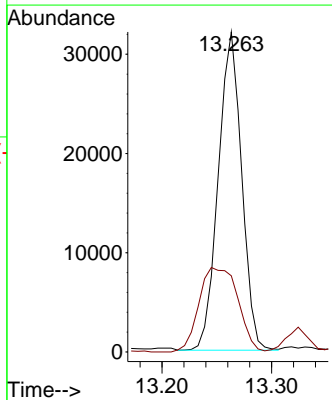
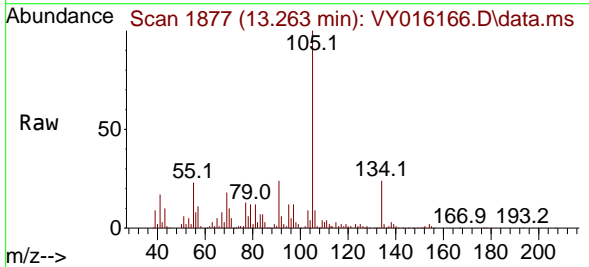
Instrument : MSVOA_Y
 ClientSampleId : 67S-SB11-1218

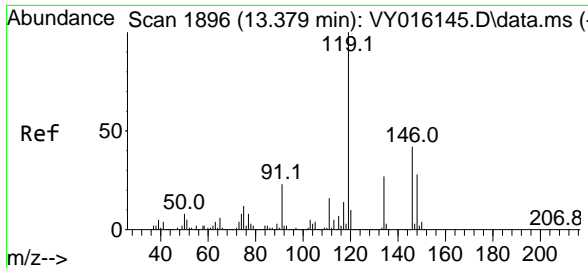
Tgt Ion:105 Resp: 110077
 Ion Ratio Lower Upper
 105 100
 120 45.7 22.2 66.6



#85
 sec-Butylbenzene
 Concen: 6.570 ug/l
 RT: 13.263 min Scan# 1877
 Delta R.T. -0.000 min
 Lab File: VY016166.D
 Acq: 01 Nov 2023 14:16

Tgt Ion:105 Resp: 47569
 Ion Ratio Lower Upper
 105 100
 134 44.0 10.2 30.6#

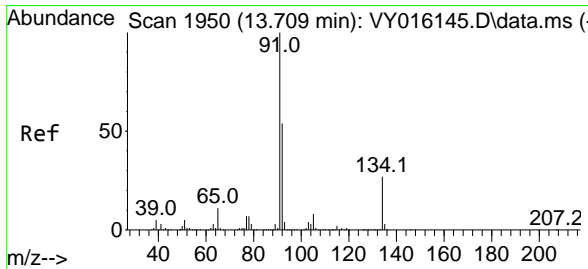
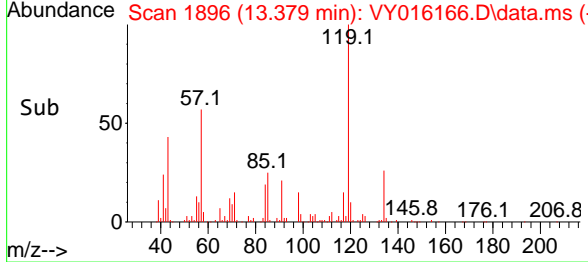
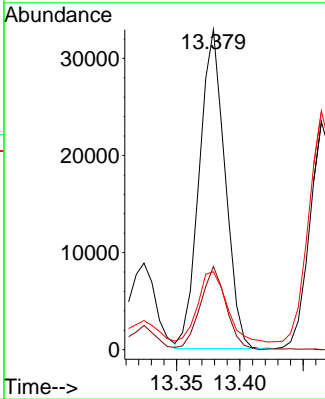
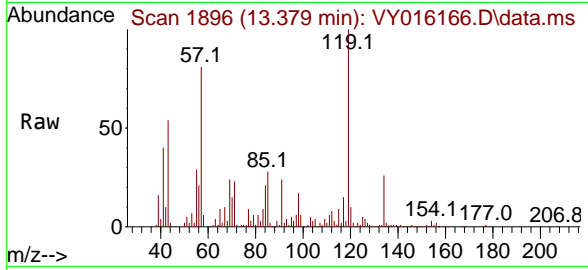




#86
 p-Isopropyltoluene
 Concen: 7.728 ug/l
 RT: 13.379 min Scan# 1896
 Delta R.T. -0.000 min
 Lab File: VY016166.D
 Acq: 01 Nov 2023 14:16

Instrument : MSVOA_Y
 ClientSampleId : 67S-SB11-1218

Tgt Ion	Resp	Lower	Upper
119	46374		
119	100		
134	25.5	13.3	39.8
91	24.6	12.4	37.4



#89
 n-Butylbenzene
 Concen: 44.044 ug/l
 RT: 13.702 min Scan# 1949
 Delta R.T. -0.006 min
 Lab File: VY016166.D
 Acq: 01 Nov 2023 14:16

Tgt Ion	Resp	Lower	Upper
91	242839		
91	100		
92	43.3	25.4	76.0
134	0.0	12.6	37.6

