

Data Path : Z:\voasrv\HPCHEM1\MSVOA_Y\Data\VY110223\
 Data File : VY016194.D
 Acq On : 02 Nov 2023 16:45
 Operator : SY/MD
 Sample : 05220-02
 Misc : 4.06g/5.0mL/MSVOA_Y/SOIL
 ALS Vial : 18 Sample Multiplier: 1

Instrument :
 MSVOA_Y
 ClientSampleId :
 Z-5(0-5)

Quant Time: Nov 03 03:17:10 2023
 Quant Method : Z:\voasrv\HPCHEM1\MSVOA_Y\methods\82Y103123S.M
 Quant Title : SW846 8260
 QLast Update : Wed Nov 01 03:33:29 2023
 Response via : Initial Calibration

Compound	R.T.	QIon	Response	Conc	Units	Dev(Min)

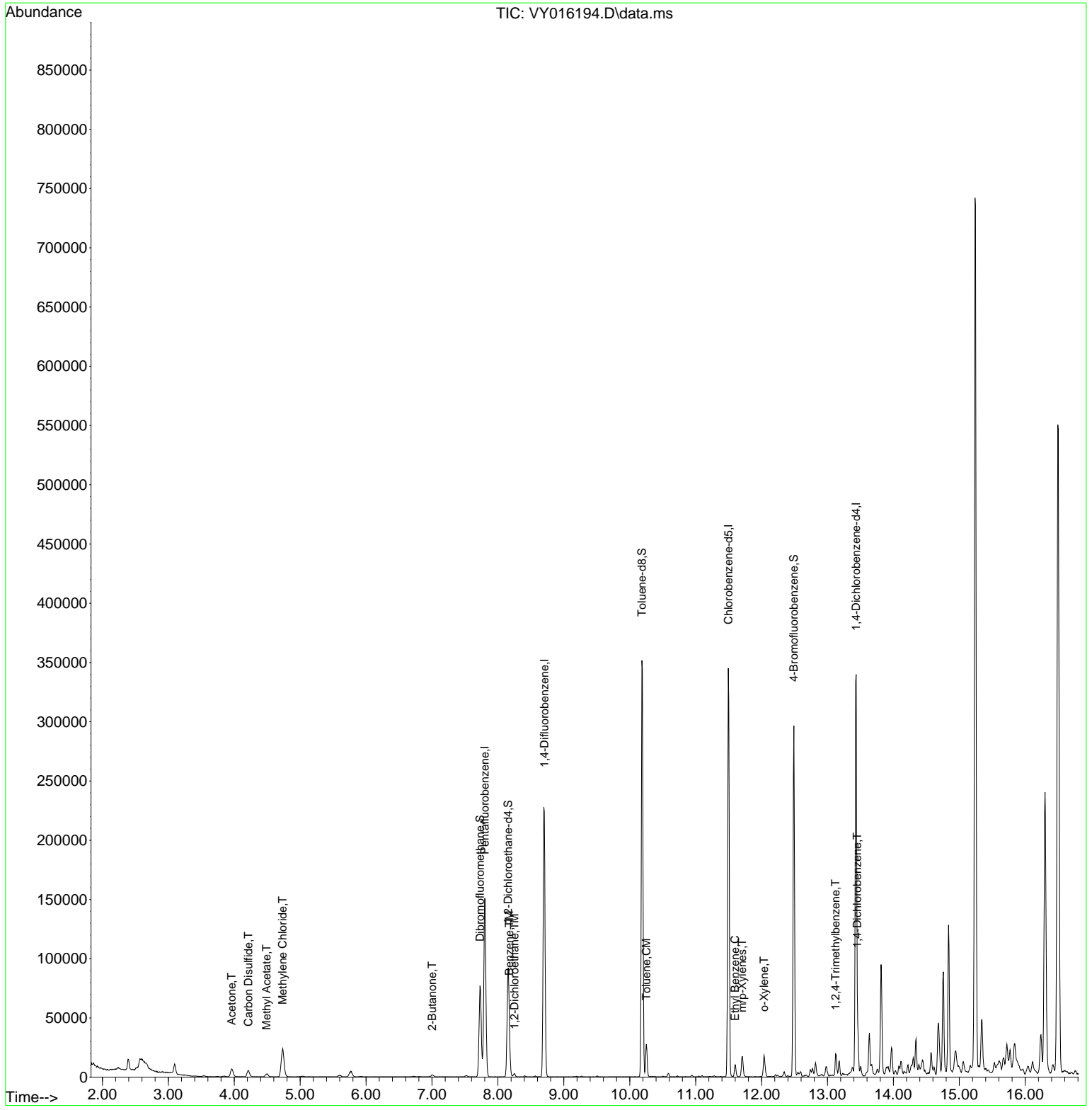
Internal Standards						
1) Pentafluorobenzene	7.801	168	117113	50.000	ug/l	0.00
34) 1,4-Difluorobenzene	8.703	114	201080	50.000	ug/l	0.00
63) Chlorobenzene-d5	11.496	117	188706	50.000	ug/l	0.00
72) 1,4-Dichlorobenzene-d4	13.434	152	90130	50.000	ug/l	0.00
System Monitoring Compounds						
33) 1,2-Dichloroethane-d4	8.155	65	65939	60.171	ug/l	0.00
Spiked Amount	50.000	Range	50 - 163	Recovery	=	120.340%
35) Dibromofluoromethane	7.728	113	54451	45.422	ug/l	0.00
Spiked Amount	50.000	Range	54 - 147	Recovery	=	90.840%
50) Toluene-d8	10.185	98	236601	49.780	ug/l	0.00
Spiked Amount	50.000	Range	58 - 134	Recovery	=	99.560%
62) 4-Bromofluorobenzene	12.489	95	85061	52.337	ug/l	0.00
Spiked Amount	50.000	Range	30 - 143	Recovery	=	104.680%
Target Compounds						
					Qvalue	
16) Acetone	3.960	43	12553	57.031	ug/l #	88
17) Carbon Disulfide	4.216	76	10893	4.708	ug/l	99
18) Methyl Acetate	4.491	43	4904	5.565	ug/l	99
20) Methylene Chloride	4.735	84	18360	14.297	ug/l	92
25) 2-Butanone	7.003	43	3095	10.237	ug/l	96
40) Benzene	8.173	78	16014	3.222	ug/l	98
42) 1,2-Dichloroethane	8.252	62	2217	1.599	ug/l	96
52) Toluene	10.252	92	11230	3.487	ug/l	97
67) Ethyl Benzene	11.599	91	7206	1.075	ug/l	95
68) m/p-Xylenes	11.703	106	5341	2.061	ug/l	95
69) o-Xylene	12.038	106	3816	1.542	ug/l	95
84) 1,2,4-Trimethylbenzene	13.123	105	10801	1.993	ug/l	97
88) 1,4-Dichlorobenzene	13.453	146	5101	1.705	ug/l #	81

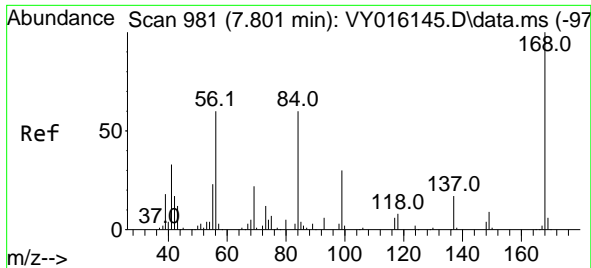
(#) = qualifier out of range (m) = manual integration (+) = signals summed

Data Path : Z:\voasrv\HPCHEM1\MSVOA_Y\Data\VY110223\
 Data File : VY016194.D
 Acq On : 02 Nov 2023 16:45
 Operator : SY/MD
 Sample : 05220-02
 Misc : 4.06g/5.0mL/MSVOA_Y/SOIL
 ALS Vial : 18 Sample Multiplier: 1

Instrument :
 MSVOA_Y
ClientSampleId :
 Z-5(0-5)

Quant Time: Nov 03 03:17:10 2023
 Quant Method : Z:\voasrv\HPCHEM1\MSVOA_Y\methods\82Y103123S.M
 Quant Title : SW846 8260
 QLast Update : Wed Nov 01 03:33:29 2023
 Response via : Initial Calibration

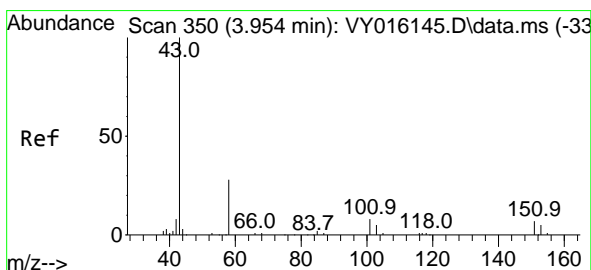
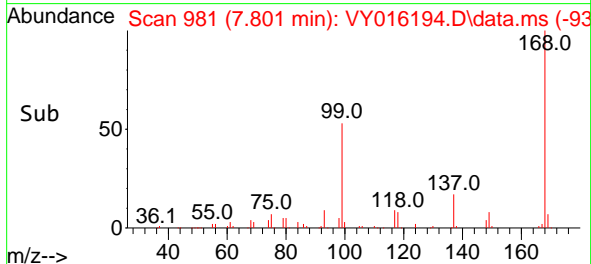
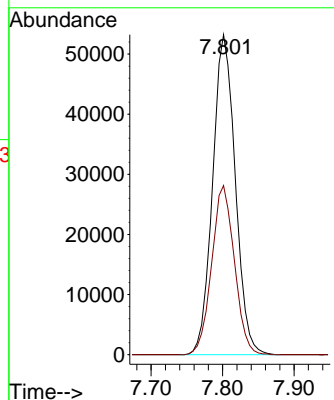
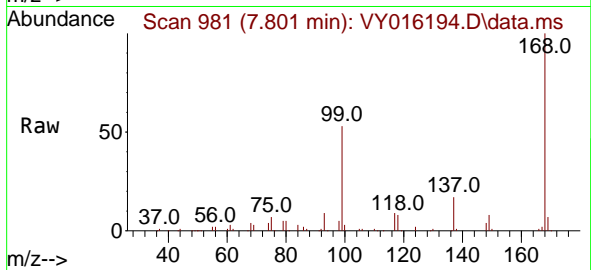




#1
 Pentafluorobenzene
 Concen: 50.000 ug/l
 RT: 7.801 min Scan# 981
 Delta R.T. 0.000 min
 Lab File: VY016194.D
 Acq: 02 Nov 2023 16:45

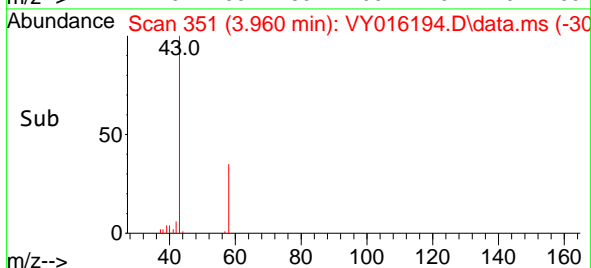
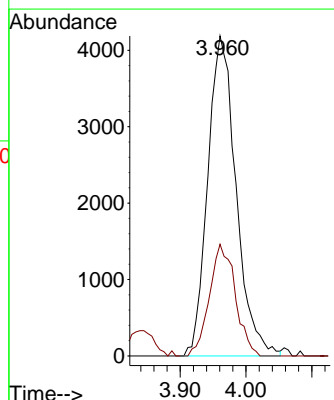
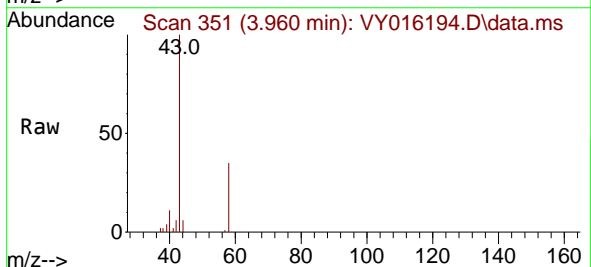
Instrument :
 MSVOA_Y
 ClientSampleId :
 Z-5(0-5)

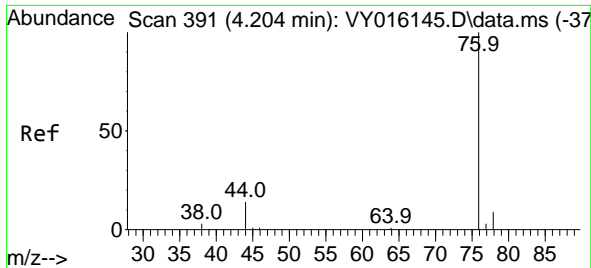
Tgt Ion:168 Resp: 117113
 Ion Ratio Lower Upper
 168 100
 99 52.9 43.4 65.0



#16
 Acetone
 Concen: 57.031 ug/l
 RT: 3.960 min Scan# 351
 Delta R.T. 0.006 min
 Lab File: VY016194.D
 Acq: 02 Nov 2023 16:45

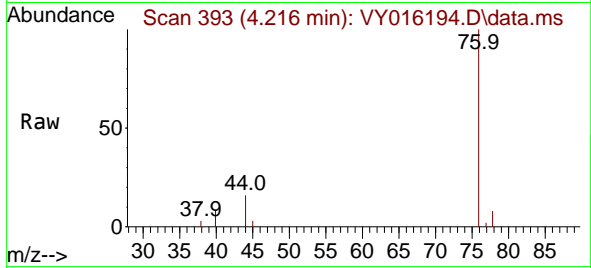
Tgt Ion: 43 Resp: 12553
 Ion Ratio Lower Upper
 43 100
 58 34.9 22.7 34.1#



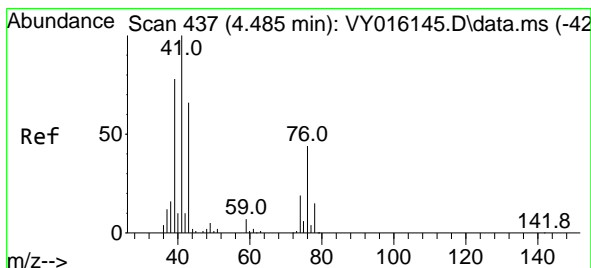
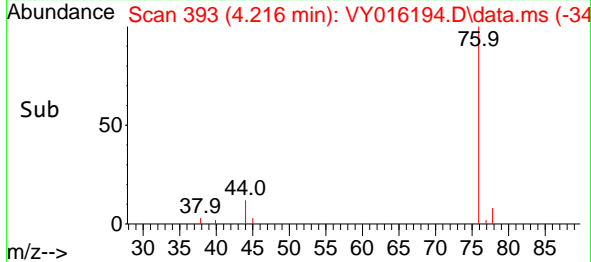
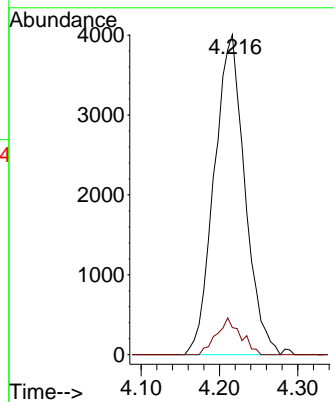


#17
 Carbon Disulfide
 Concen: 4.708 ug/l
 RT: 4.216 min Scan# 391
 Delta R.T. 0.012 min
 Lab File: VY016194.D
 Acq: 02 Nov 2023 16:45

Instrument : MSVOA_Y
 ClientSampleId : Z-5(0-5)

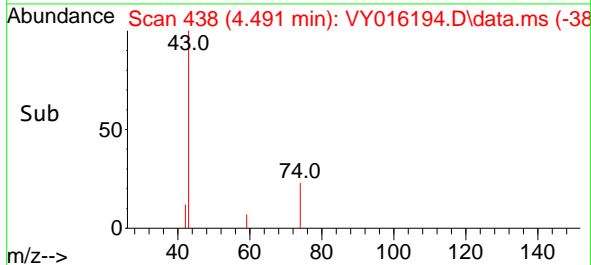
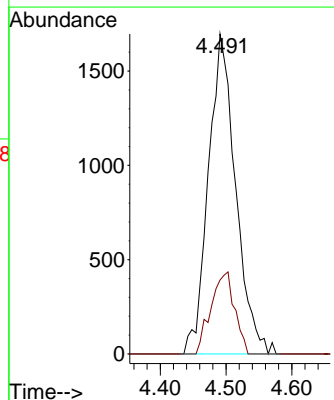
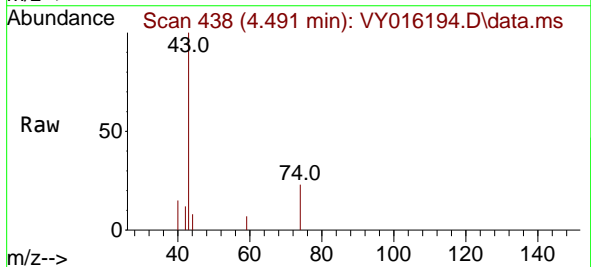


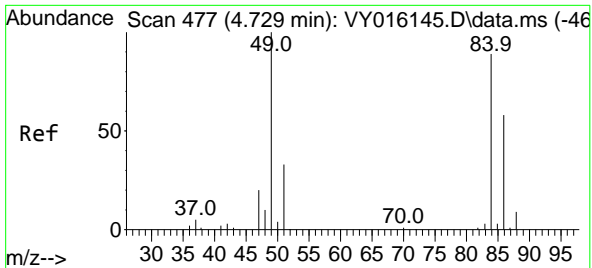
Tgt Ion: 76 Resp: 10893
 Ion Ratio Lower Upper
 76 100
 78 8.4 7.0 10.4



#18
 Methyl Acetate
 Concen: 5.565 ug/l
 RT: 4.491 min Scan# 438
 Delta R.T. 0.006 min
 Lab File: VY016194.D
 Acq: 02 Nov 2023 16:45

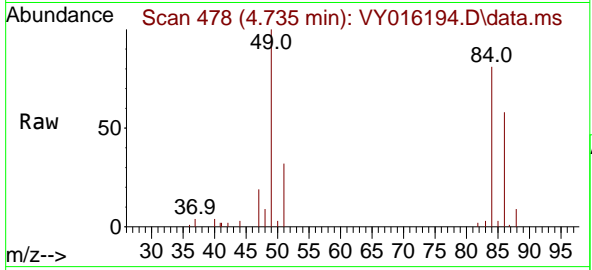
Tgt Ion: 43 Resp: 4904
 Ion Ratio Lower Upper
 43 100
 74 22.1 17.4 26.0





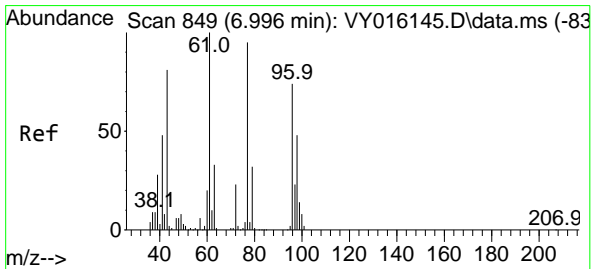
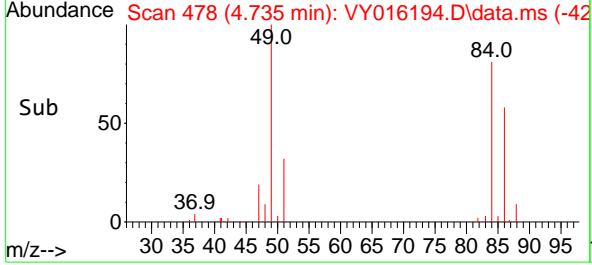
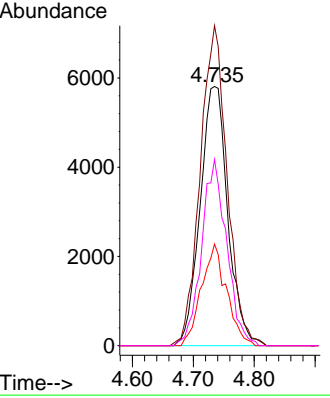
#20
 Methylene Chloride
 Concen: 14.297 ug/l
 RT: 4.735 min Scan# 41
 Delta R.T. 0.006 min
 Lab File: VY016194.D
 Acq: 02 Nov 2023 16:45

Instrument : MSVOA_Y
 ClientSampleId : Z-5(0-5)

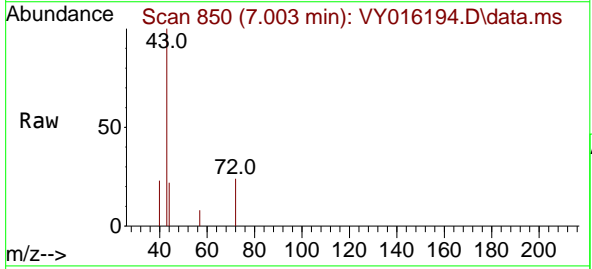


Tgt Ion: 84 Resp: 18360

Ion	Ratio	Lower	Upper
84	100		
49	123.4	106.9	160.3
51	39.2	33.2	49.8
86	71.8	51.0	76.6

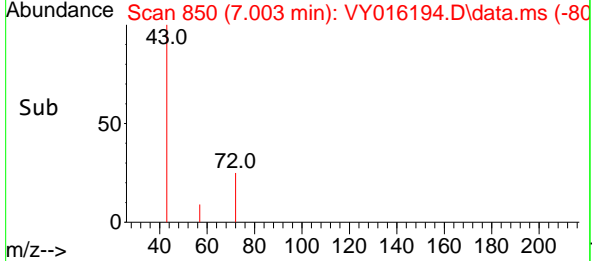
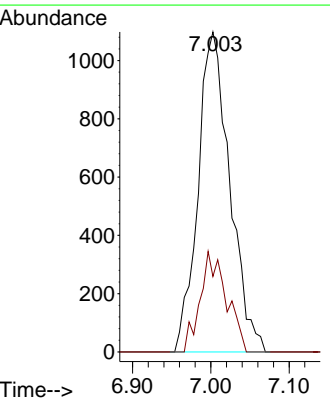


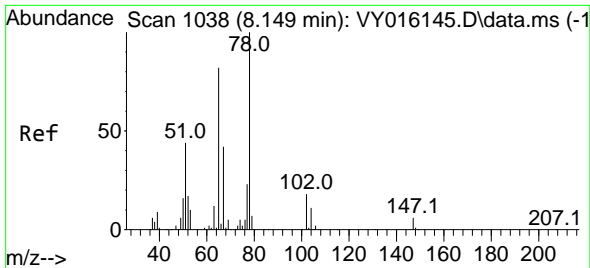
#25
 2-Butanone
 Concen: 10.237 ug/l
 RT: 7.003 min Scan# 850
 Delta R.T. 0.006 min
 Lab File: VY016194.D
 Acq: 02 Nov 2023 16:45



Tgt Ion: 43 Resp: 3095

Ion	Ratio	Lower	Upper
43	100		
72	23.6	20.5	30.7

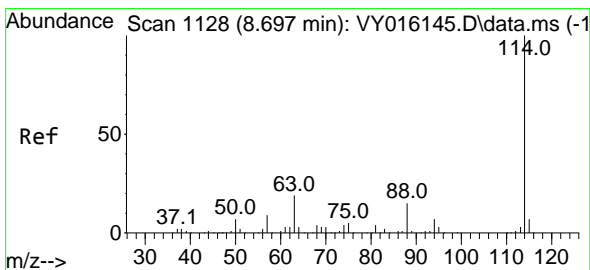
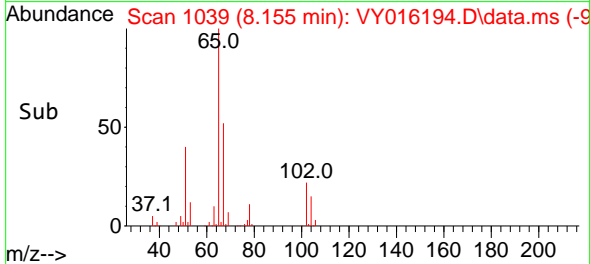
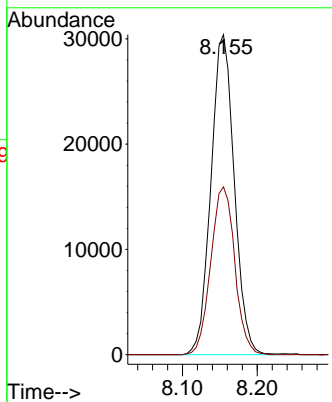
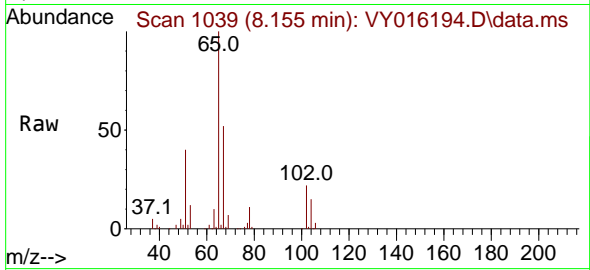




#33
 1,2-Dichloroethane-d4
 Concen: 60.171 ug/l
 RT: 8.155 min Scan# 1039
 Delta R.T. 0.006 min
 Lab File: VY016194.D
 Acq: 02 Nov 2023 16:45

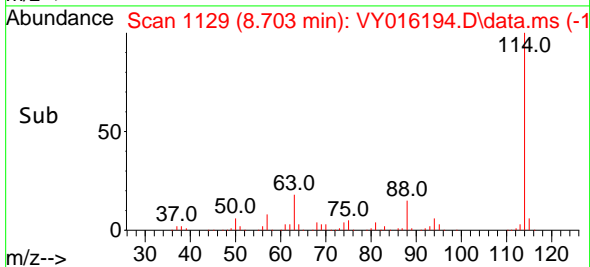
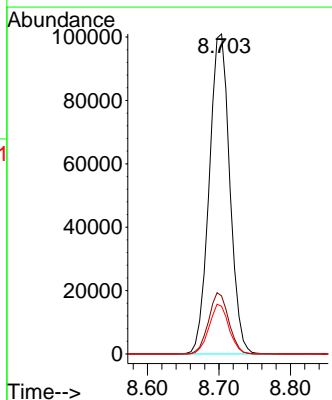
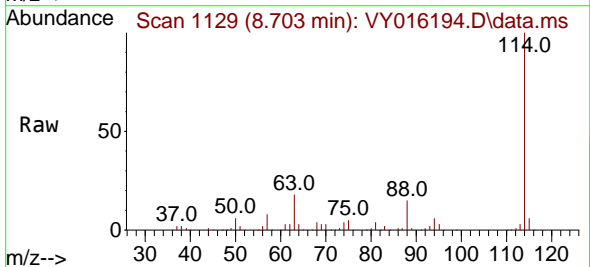
Instrument : MSVOA_Y
 ClientSampleId : Z-5(0-5)

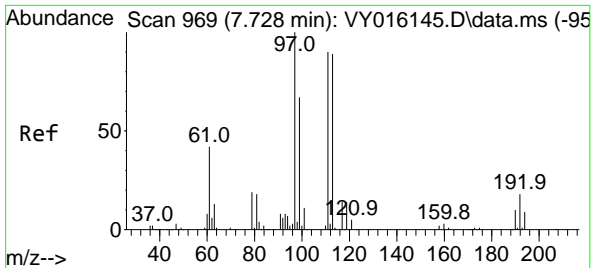
Tgt Ion: 65 Resp: 65939
 Ion Ratio Lower Upper
 65 100
 67 53.9 0.0 101.8



#34
 1,4-Difluorobenzene
 Concen: 50.000 ug/l
 RT: 8.703 min Scan# 1129
 Delta R.T. 0.006 min
 Lab File: VY016194.D
 Acq: 02 Nov 2023 16:45

Tgt Ion:114 Resp: 201080
 Ion Ratio Lower Upper
 114 100
 63 18.2 0.0 42.4
 88 14.9 0.0 30.6

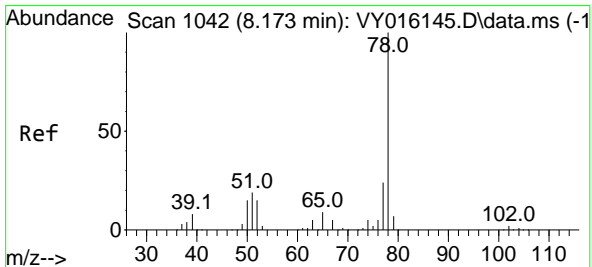
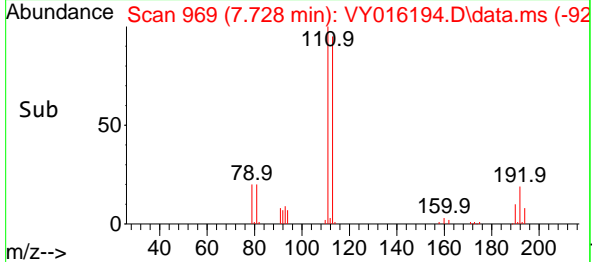
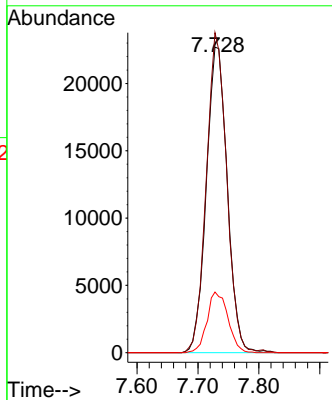
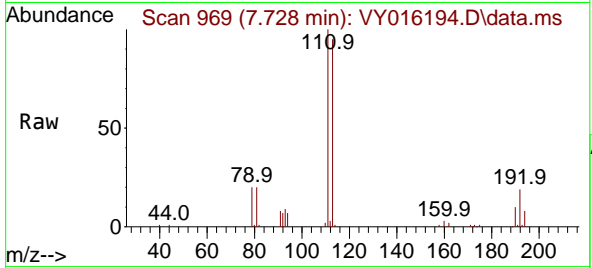




#35
 Dibromofluoromethane
 Concen: 45.422 ug/l
 RT: 7.728 min Scan# 969
 Delta R.T. 0.000 min
 Lab File: VY016194.D
 Acq: 02 Nov 2023 16:45

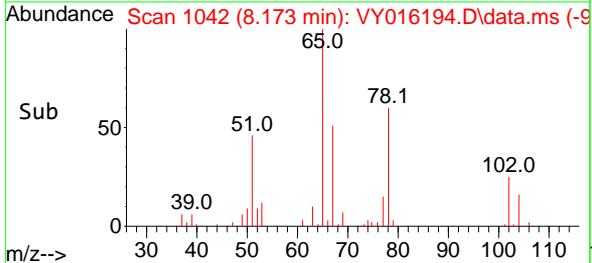
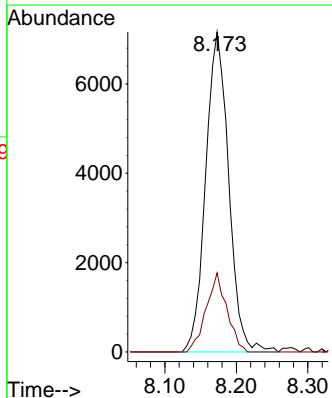
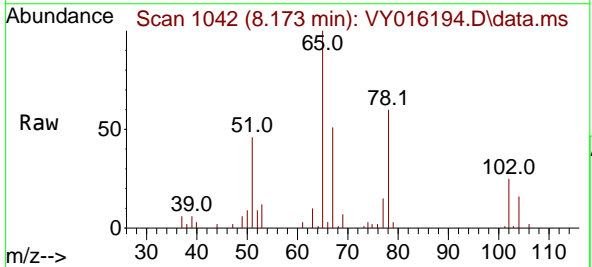
Instrument : MSVOA_Y
 ClientSampleId : Z-5(0-5)

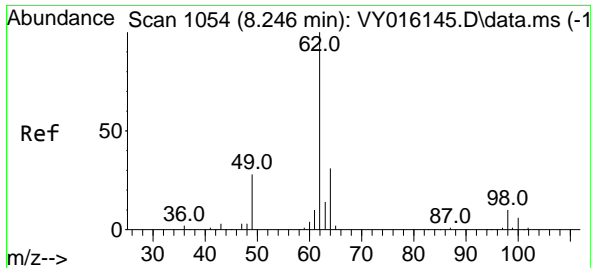
Tgt Ion	Resp	Lower	Upper
113	54451		
113	100		
111	101.5	81.3	121.9
192	19.7	16.9	25.3



#40
 Benzene
 Concen: 3.222 ug/l
 RT: 8.173 min Scan# 1042
 Delta R.T. 0.000 min
 Lab File: VY016194.D
 Acq: 02 Nov 2023 16:45

Tgt Ion	Resp	Lower	Upper
78	16014		
78	100		
77	24.7	19.0	28.6

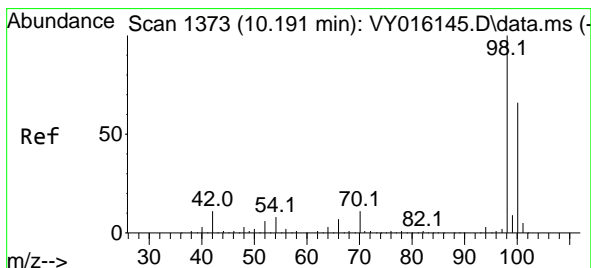
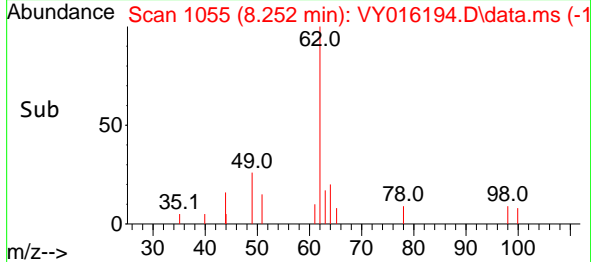
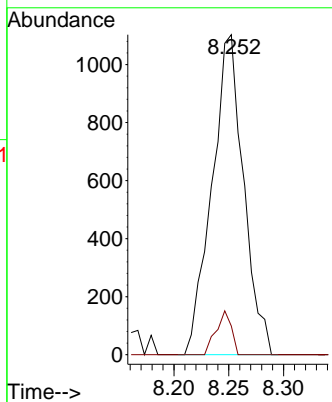
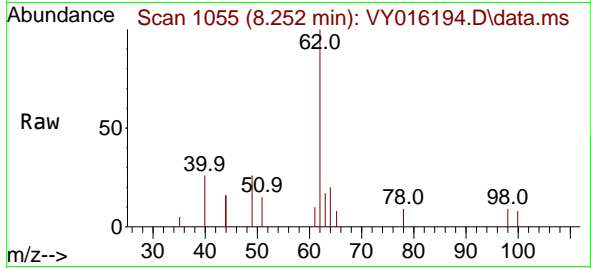




#42
 1,2-Dichloroethane
 Concen: 1.599 ug/l
 RT: 8.252 min Scan# 1055
 Delta R.T. 0.006 min
 Lab File: VY016194.D
 Acq: 02 Nov 2023 16:45

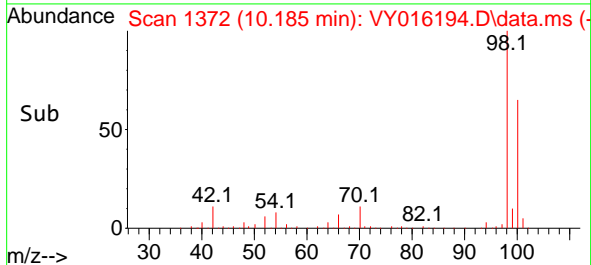
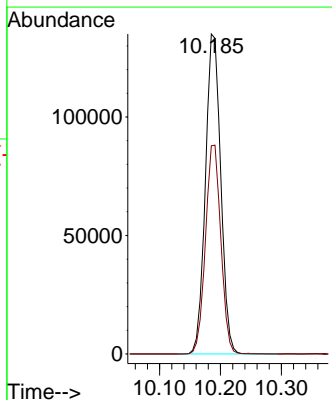
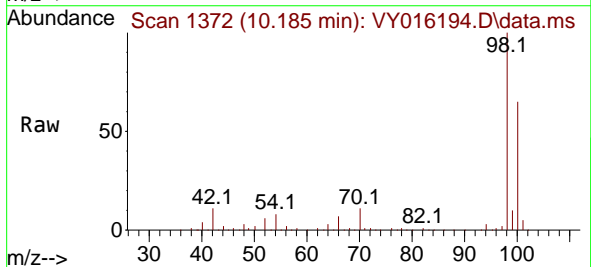
Instrument : MSVOA_Y
 ClientSampleId : Z-5(0-5)

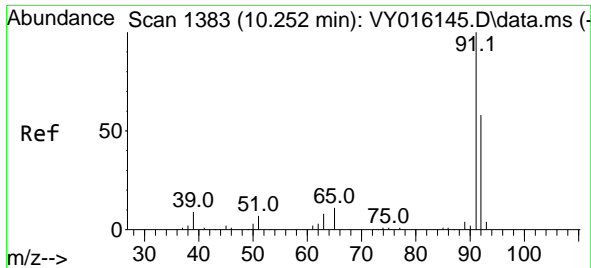
Tgt Ion: 62 Resp: 2217
 Ion Ratio Lower Upper
 62 100
 98 6.6 0.0 15.8



#50
 Toluene-d8
 Concen: 49.780 ug/l
 RT: 10.185 min Scan# 1372
 Delta R.T. -0.006 min
 Lab File: VY016194.D
 Acq: 02 Nov 2023 16:45

Tgt Ion: 98 Resp: 236601
 Ion Ratio Lower Upper
 98 100
 100 65.3 50.1 75.1

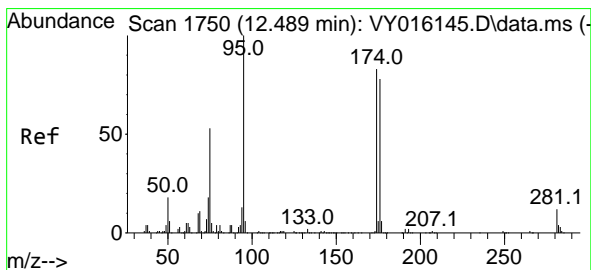
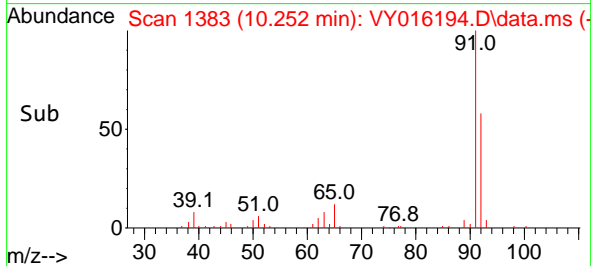
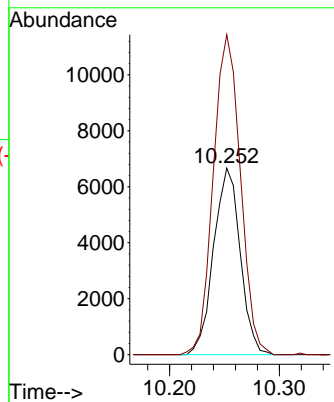
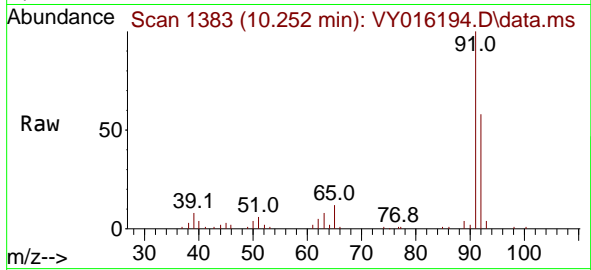




#52
 Toluene
 Concen: 3.487 ug/l
 RT: 10.252 min Scan# 1383
 Delta R.T. 0.000 min
 Lab File: VY016194.D
 Acq: 02 Nov 2023 16:45

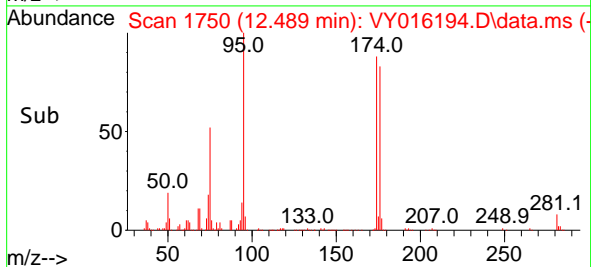
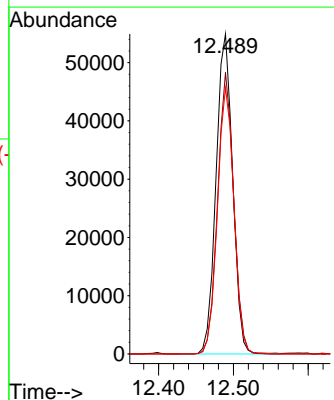
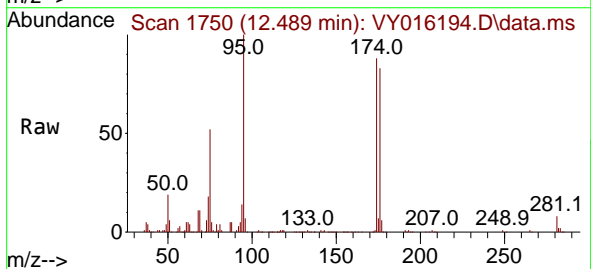
Instrument : MSVOA_Y
 ClientSampleId : Z-5(0-5)

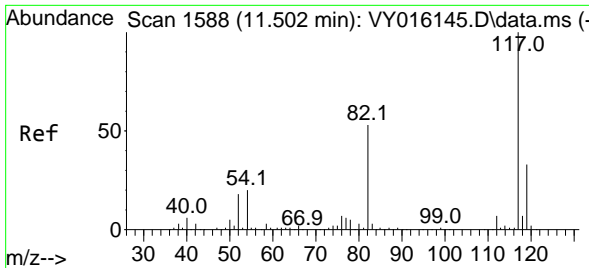
Tgt Ion: 92 Resp: 11230
 Ion Ratio Lower Upper
 92 100
 91 175.0 143.8 215.6



#62
 4-Bromofluorobenzene
 Concen: 52.337 ug/l
 RT: 12.489 min Scan# 1750
 Delta R.T. 0.000 min
 Lab File: VY016194.D
 Acq: 02 Nov 2023 16:45

Tgt Ion: 95 Resp: 85061
 Ion Ratio Lower Upper
 95 100
 174 85.2 0.0 178.2
 176 82.6 0.0 173.8



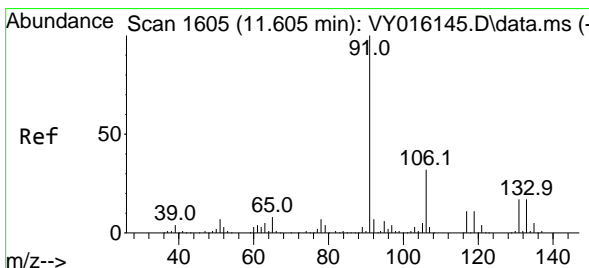
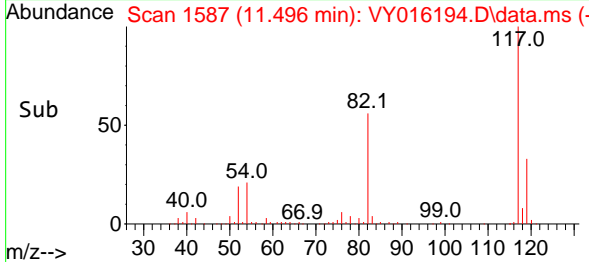
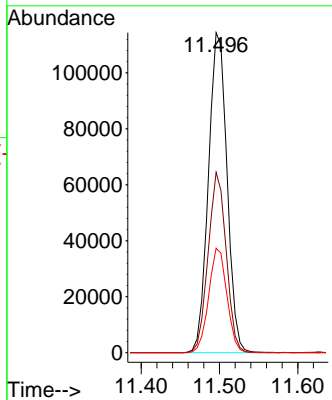
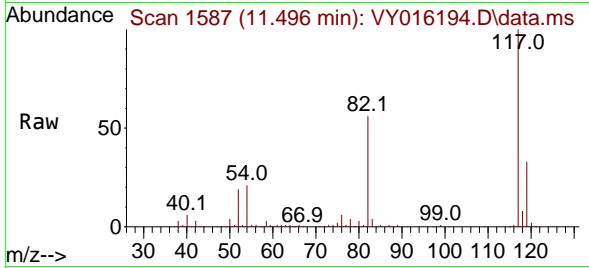


#63
 Chlorobenzene-d5
 Concen: 50.000 ug/l
 RT: 11.496 min Scan# 11
 Delta R.T. -0.006 min
 Lab File: VY016194.D
 Acq: 02 Nov 2023 16:45

Instrument :
 MSVOA_Y
 ClientSampleId :
 Z-5(0-5)

Tgt Ion:117 Resp: 188706

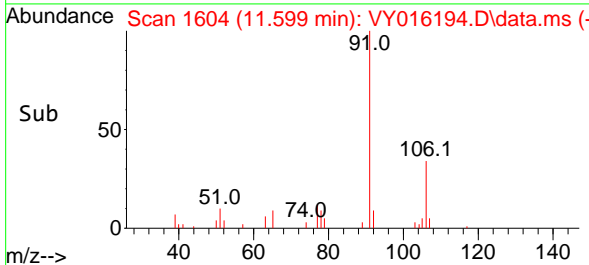
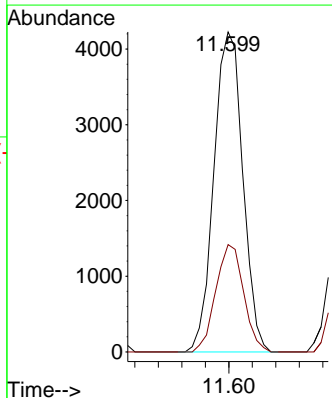
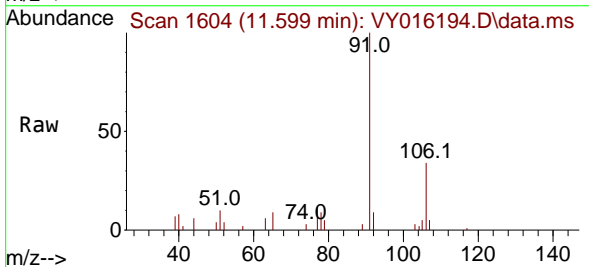
Ion	Ratio	Lower	Upper
117	100		
82	56.4	43.4	65.0
119	32.7	26.3	39.5

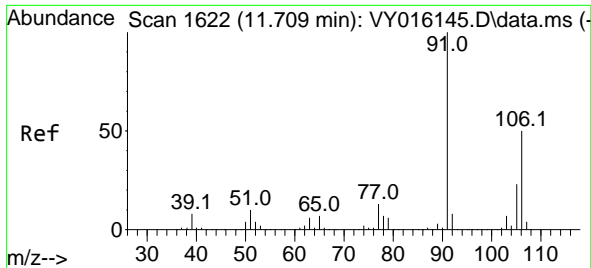


#67
 Ethyl Benzene
 Concen: 1.075 ug/l
 RT: 11.599 min Scan# 1604
 Delta R.T. -0.006 min
 Lab File: VY016194.D
 Acq: 02 Nov 2023 16:45

Tgt Ion: 91 Resp: 7206

Ion	Ratio	Lower	Upper
91	100		
106	33.6	24.6	36.8

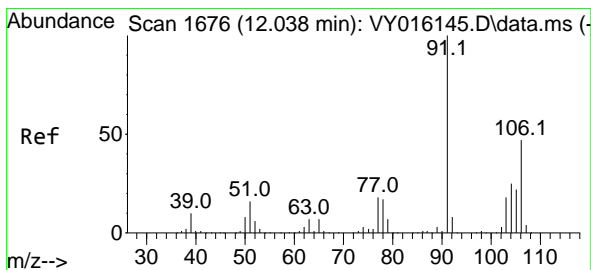
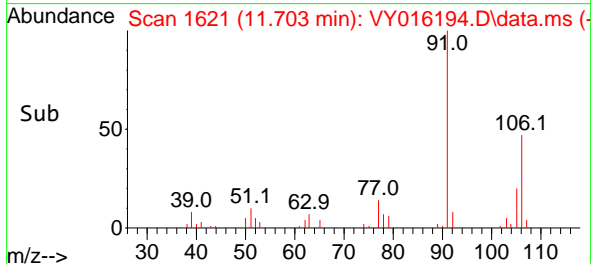
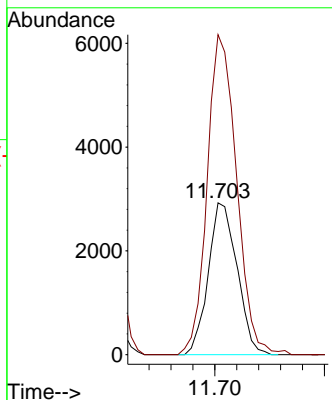
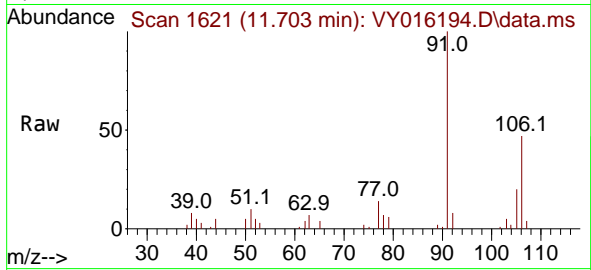




#68
 m/p-Xylenes
 Concen: 2.061 ug/l
 RT: 11.703 min Scan# 1621
 Delta R.T. -0.006 min
 Lab File: VY016194.D
 Acq: 02 Nov 2023 16:45

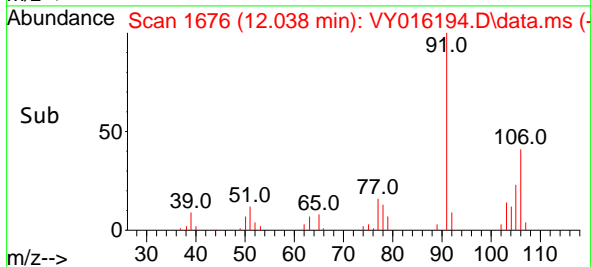
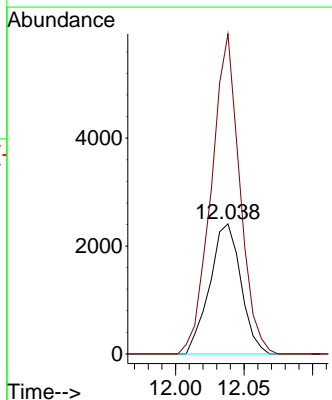
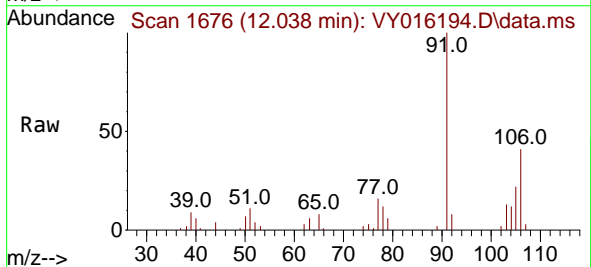
Instrument : MSVOA_Y
 ClientSampleId : Z-5(0-5)

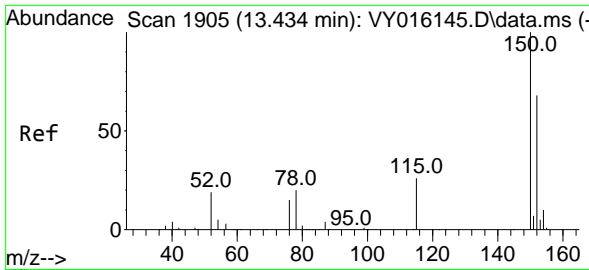
Tgt Ion:106 Resp: 5341
 Ion Ratio Lower Upper
 106 100
 91 215.1 166.1 249.1



#69
 o-Xylene
 Concen: 1.542 ug/l
 RT: 12.038 min Scan# 1676
 Delta R.T. 0.000 min
 Lab File: VY016194.D
 Acq: 02 Nov 2023 16:45

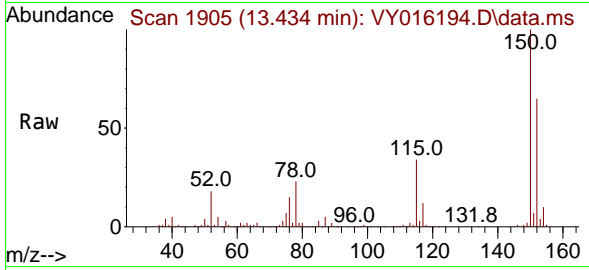
Tgt Ion:106 Resp: 3816
 Ion Ratio Lower Upper
 106 100
 91 224.8 108.1 324.3



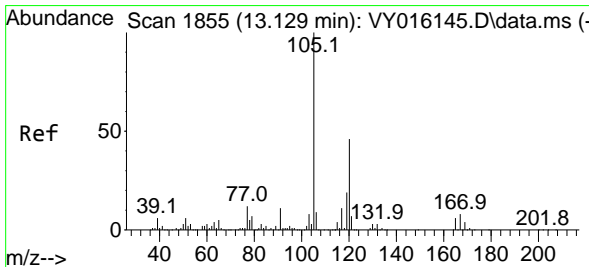
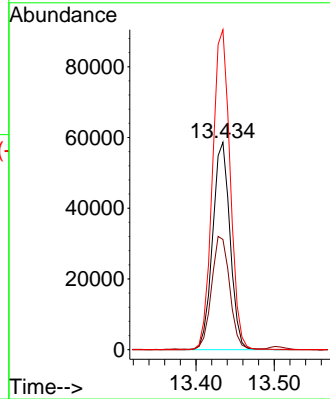
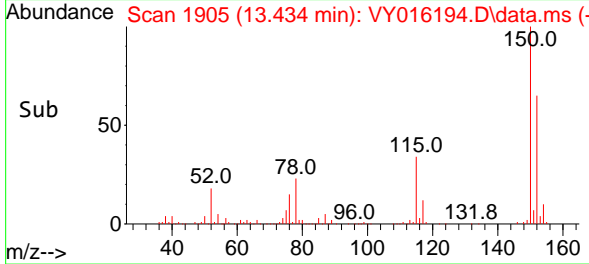


#72
 1,4-Dichlorobenzene-d4
 Concen: 50.000 ug/l
 RT: 13.434 min Scan# 1854
 Delta R.T. 0.000 min
 Lab File: VY016194.D
 Acq: 02 Nov 2023 16:45

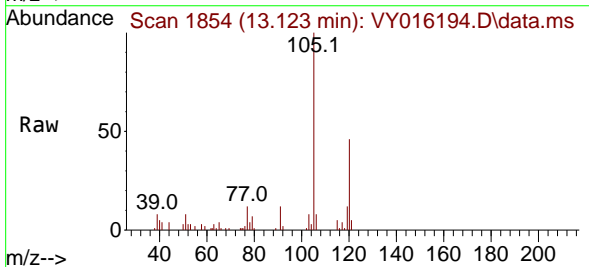
Instrument : MSVOA_Y
 ClientSampleId : Z-5(0-5)



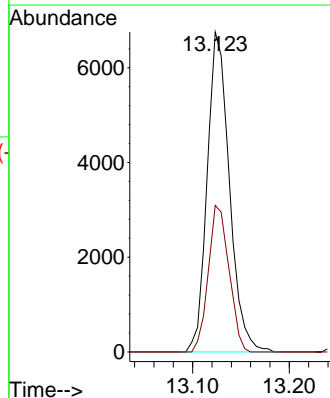
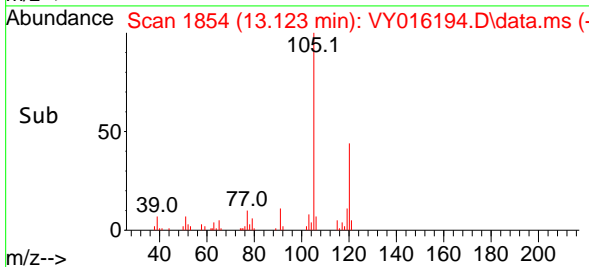
Tgt Ion:152 Resp: 90130
 Ion Ratio Lower Upper
 152 100
 115 56.9 28.8 86.5
 150 157.1 0.0 348.8

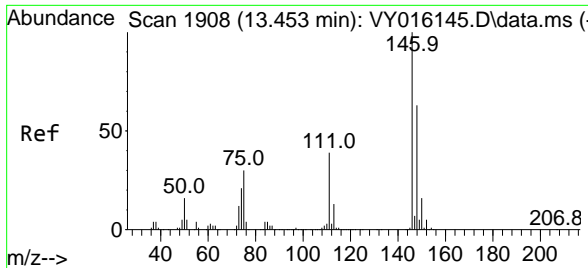


#84
 1,2,4-Trimethylbenzene
 Concen: 1.993 ug/l
 RT: 13.123 min Scan# 1854
 Delta R.T. -0.006 min
 Lab File: VY016194.D
 Acq: 02 Nov 2023 16:45



Tgt Ion:105 Resp: 10801
 Ion Ratio Lower Upper
 105 100
 120 42.7 22.2 66.6





#88
 1,4-Dichlorobenzene
 Concen: 1.705 ug/l
 RT: 13.453 min Scan# 1908
 Delta R.T. 0.000 min
 Lab File: VY016194.D
 Acq: 02 Nov 2023 16:45

Instrument : MSVOA_Y
 ClientSampleId : Z-5(0-5)

Tgt Ion:146 Resp: 5101

Ion	Ratio	Lower	Upper
146	100		
111	64.8	18.9	56.7#
148	67.7	32.1	96.5

