

Data Path : Z:\VOASRV\HPCHEM1\MSVOA Y\DATA\VY110320\
 Data File : VY003490.D
 Acq On : 03 Nov 2020 14:24
 Operator : SY/MD
 Sample : L4600-01
 Misc : 5.22G/5ML/MSVOA Y/SOIL
 ALS Vial : 11 Sample Multiplier: 1

Instrument :
 MSVOA_Y
 ClientSampleId :
 CRT-17

Integration Parameters: RTEINT.P
 Integrator: RTE
 Smoothing : ON Filtering: 5
 Sampling : 1 Min Area: 3 % of largest Peak
 Start Thrs: 0.2 Max Peaks: 100
 Stop Thrs : 0 Peak Location: TOP

If leading or trailing edge < 100 prefer < Baseline drop else tangent >
 Peak separation: 5

Method : Z:\VOASRV\HPCHEM1\MSVOA_Y\METHODS\82Y110220S.M
 Title : SW846 8260

Signal : TIC

peak #	R.T. min	first scan	max scan	last scan	PK TY	peak height	corr. area	corr. % max.	% of total
1	4.724	481	490	491	rBV	7811	13157	1.31%	0.256%
2	7.730	972	983	988	rBV2	142629	342234	34.04%	6.648%
3	7.797	988	994	1009	rVB	218350	489583	48.70%	9.510%
4	8.151	1043	1052	1065	rBV	151074	326937	32.52%	6.350%
5	8.535	1109	1115	1128	rVB2	5837	12346	1.23%	0.240%
6	8.693	1133	1141	1161	rVV	364591	723092	71.93%	14.045%
7	10.181	1377	1385	1394	rBV	579346	1005283	100.00%	19.527%
8	11.491	1592	1600	1613	rBV	510723	830675	82.63%	16.135%
9	12.479	1752	1762	1771	rBV	395275	631938	62.86%	12.275%
10	13.424	1910	1917	1923	rBV	491348	753190	74.92%	14.630%
11	13.485	1923	1927	1931	rVV3	11858	19777	1.97%	0.384%

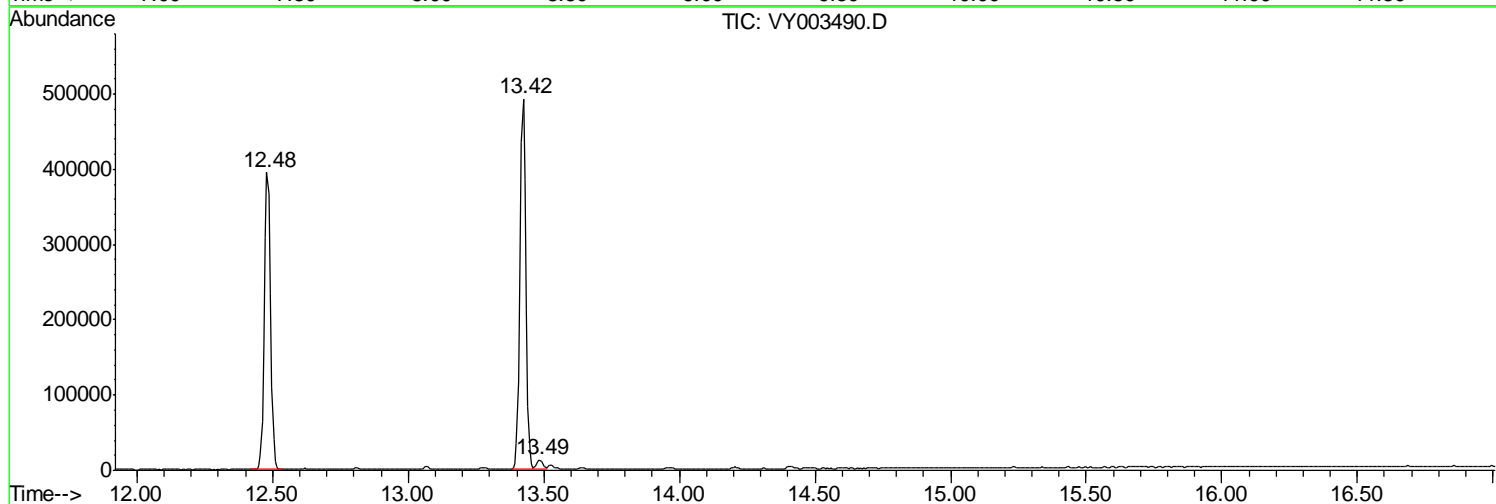
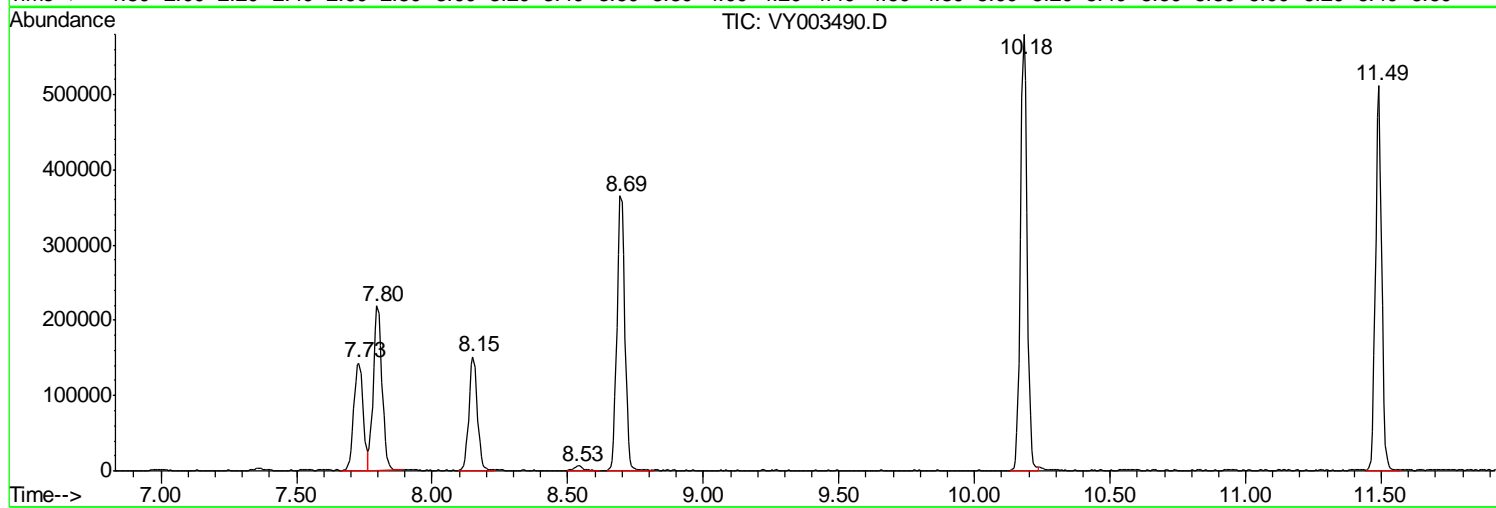
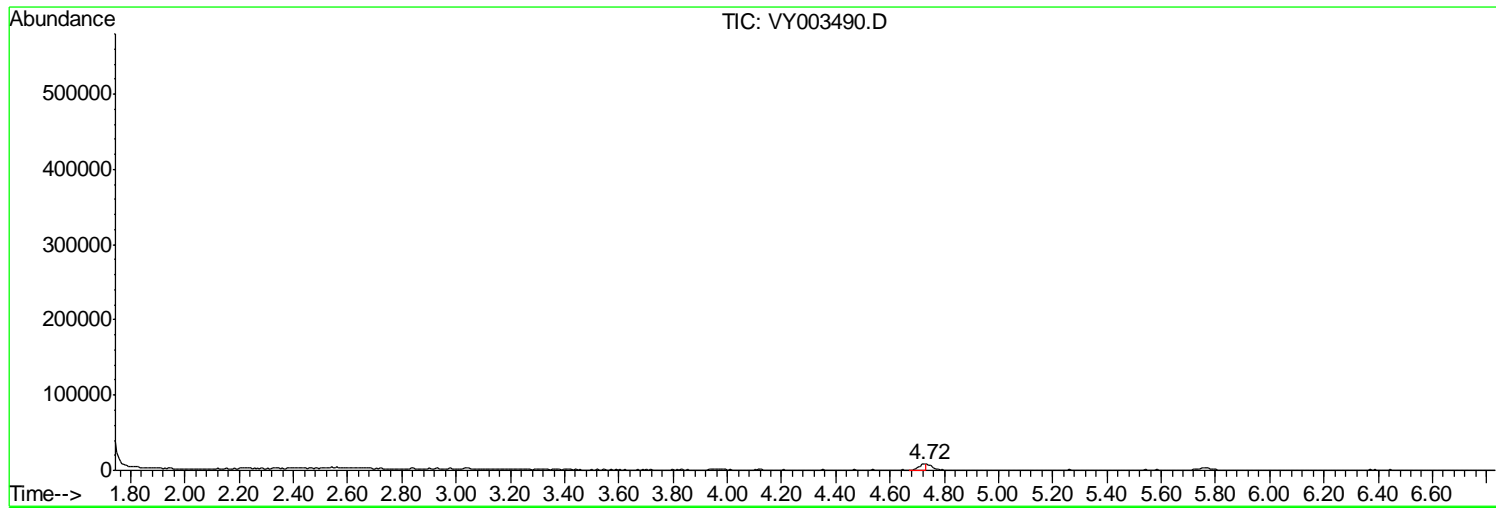
Sum of corrected areas: 5148212

Data Path : Z:\VOASRV\HPCHEM1\MSVOA Y\DATA\VY110320\
Data File : VY003490.D
Acq On : 03 Nov 2020 14:24
Operator : SY/MD
Sample : L4600-01
Misc : 5.22G/5ML/MSVOA Y/SOIL
ALS Vial : 11 Sample Multiplier: 1

Instrument :
MSVOA_Y
ClientSampleId :
CRT-17

Quant Method : Z:\VOASRV\HPCHEM1\MSVOA_Y\METHODS\82Y110220S.M
Quant Title : SW846 8260

TIC Library : C:\DATABASE\NIST11.L
TIC Integration Parameters: LSCINT.P



Data Path : Z:\VOASRV\HPCHEM1\MSVOA_Y\DATA\VY110320\
Data File : VY003490.D
Acq On : 03 Nov 2020 14:24
Operator : SY/MD
Sample : L4600-01
Misc : 5.22G/5ML/MSVOA_Y/SOIL
ALS Vial : 11 Sample Multiplier: 1

Instrument :
MSVOA_Y
ClientSampleId :
CRT-17

Quant Method : Z:\VOASRV\HPCHEM1\MSVOA_Y\METHODS\82Y110220S.M
Quant Title : SW846 8260

TIC Library : C:\DATABASE\NIST11.L
TIC Integration Parameters: LSCINT.P

No Library Search Compounds Detected

Data Path : Z:\VOASRV\HPCHEM1\MSVOA_Y\DATA\VY110320\
Data File : VY003490.D
Acq On : 03 Nov 2020 14:24
Operator : SY/MD
Sample : L4600-01
Misc : 5.22G/5ML/MSVOA_Y/SOIL
ALS Vial : 11 Sample Multiplier: 1

Instrument :
MSVOA_Y
ClientSampleId :
CRT-17

Quant Method : Z:\VOASRV\HPCHEM1\MSVOA_Y\METHODS\82Y110220S.M
Quant Title : SW846 8260

TIC Library : C:\DATABASE\NIST11.L
TIC Integration Parameters: LSCINT.P

TIC Top Hit name	RT	EstConc	Units	Response	--Internal Standard--			
					#	RT	Resp	Conc
