

Data Path : Z:\voasrv\HPCHEM1\MSVOA_Y\Data\VY110323\
 Data File : VY016211.D
 Acq On : 03 Nov 2023 13:36
 Operator : SY/MD
 Sample : 05234-03
 Misc : 5.00g/5.0mL/MSVOA_Y/SOIL
 ALS Vial : 12 Sample Multiplier: 1

Instrument :
 MSVOA_Y
 ClientSampleId :

Quant Time: Nov 03 23:02:10 2023
 Quant Method : Z:\voasrv\HPCHEM1\MSVOA_Y\methods\82Y103123S.M
 Quant Title : SW846 8260
 QLast Update : Wed Nov 01 03:33:29 2023
 Response via : Initial Calibration

Compound	R.T.	QIon	Response	Conc	Units	Dev(Min)

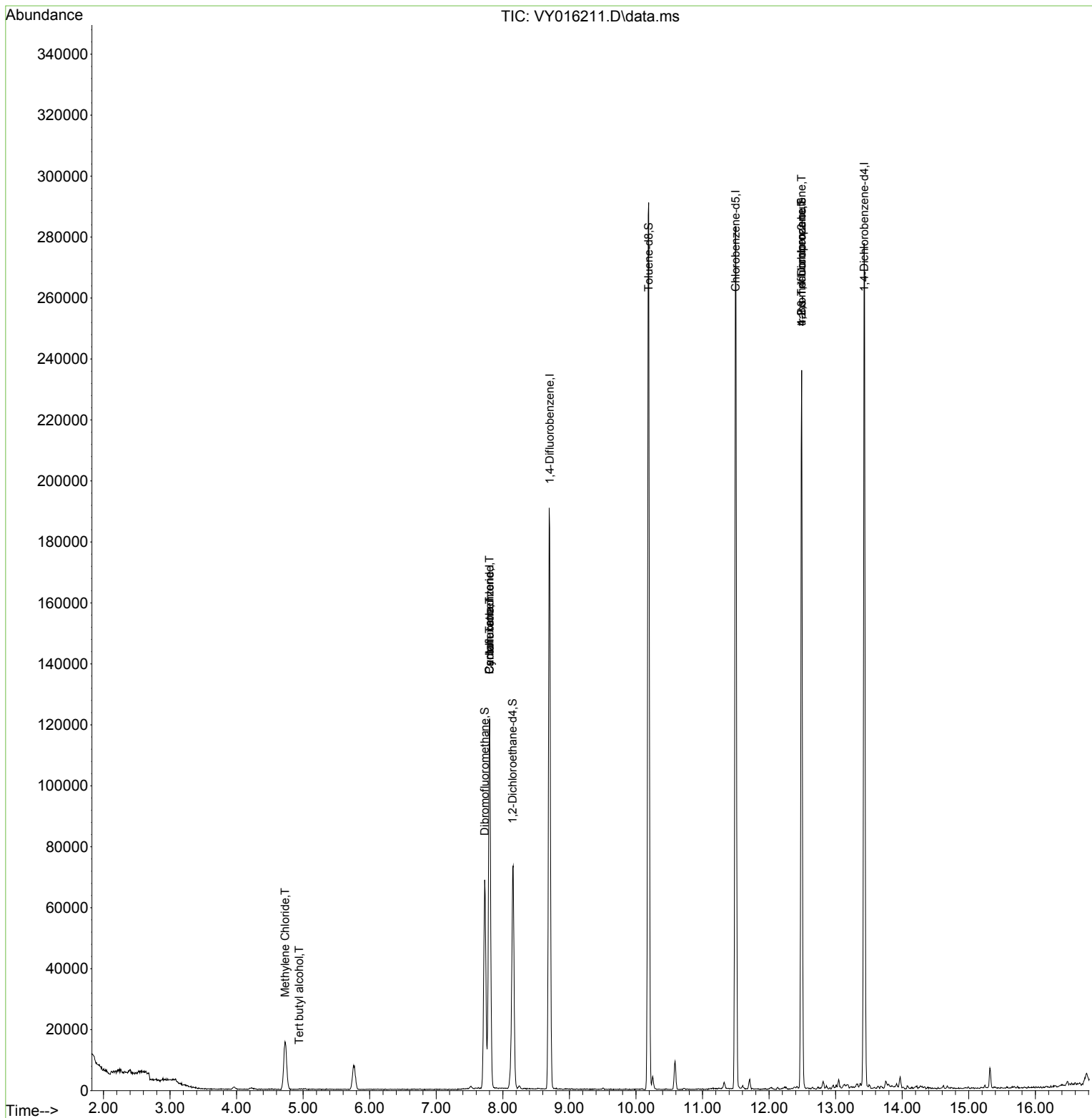
Internal Standards						
1) Pentafluorobenzene	7.801	168	95857	50.000	ug/l	0.00
34) 1,4-Difluorobenzene	8.703	114	167957	50.000	ug/l	0.00
63) Chlorobenzene-d5	11.496	117	158153	50.000	ug/l	0.00
72) 1,4-Dichlorobenzene-d4	13.428	152	72278	50.000	ug/l	0.00
System Monitoring Compounds						
33) 1,2-Dichloroethane-d4	8.149	65	54819	61.116	ug/l	0.00
Spiked Amount	50.000	Range	50 - 163	Recovery	=	122.240%
35) Dibromofluoromethane	7.728	113	47364	47.302	ug/l	0.00
Spiked Amount	50.000	Range	54 - 147	Recovery	=	94.600%
50) Toluene-d8	10.191	98	195506	49.246	ug/l	0.00
Spiked Amount	50.000	Range	58 - 134	Recovery	=	98.500%
62) 4-Bromofluorobenzene	12.489	95	67322	49.592	ug/l	0.00
Spiked Amount	50.000	Range	30 - 143	Recovery	=	99.180%
Target Compounds						
					Qvalue	
11) Tert butyl alcohol	4.942	59	187	2.790	ug/l #	89
16) Acetone	3.960	43	1522	Below Cal	#	84
20) Methylene Chloride	4.728	84	12424	11.258	ug/l #	88
31) Cyclohexane	7.801	56	1866	1.353	ug/l #	1
38) Carbon Tetrachloride	7.801	117	9199	6.422	ug/l #	17
76) 1,2,3-Trichloropropane	12.489	75	35298	51.859	ug/l #	100
81) trans-1,4-Dichloro-2-b...	12.489	75	35298	112.443	ug/l #	11

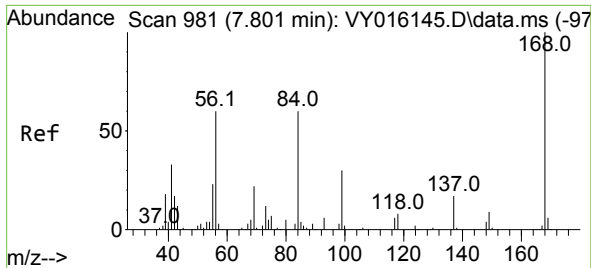
(#) = qualifier out of range (m) = manual integration (+) = signals summed

Data Path : Z:\voasrv\HPCHEM1\MSVOA_Y\Data\VY110323\
 Data File : VY016211.D
 Acq On : 03 Nov 2023 13:36
 Operator : SY/MD
 Sample : 05234-03
 Misc : 5.00g/5.0mL/MSVOA_Y/SOIL
 ALS Vial : 12 Sample Multiplier: 1

Instrument :
 MSVOA_Y
 ClientSampleId :

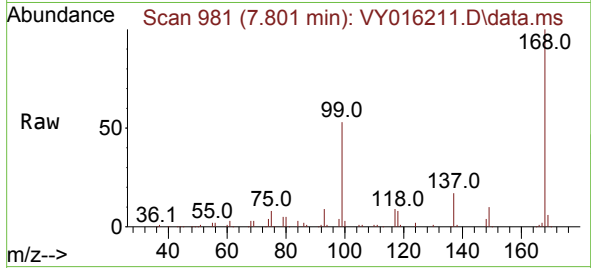
Quant Time: Nov 03 23:02:10 2023
 Quant Method : Z:\voasrv\HPCHEM1\MSVOA_Y\methods\82Y103123S.M
 Quant Title : SW846 8260
 QLast Update : Wed Nov 01 03:33:29 2023
 Response via : Initial Calibration



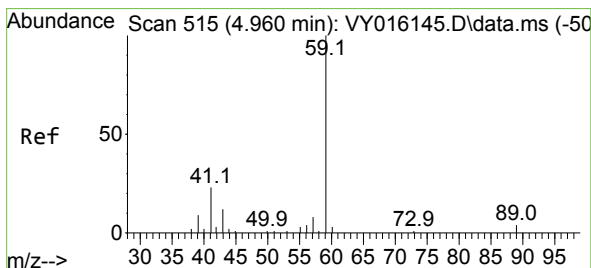
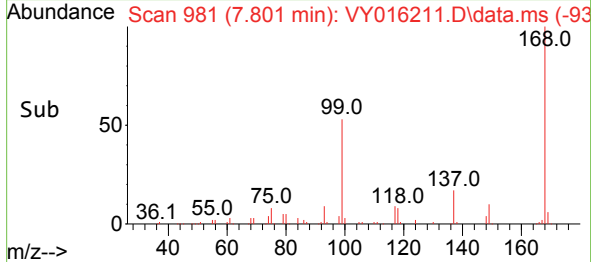
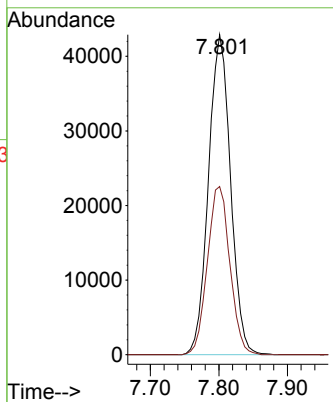


#1
 Pentafluorobenzene
 Concen: 50.000 ug/l
 RT: 7.801 min Scan# 99
 Delta R.T. 0.000 min
 Lab File: VY016211.D
 Acq: 03 Nov 2023 13:36

Instrument :
 MSVOA_Y
 ClientSampleId :

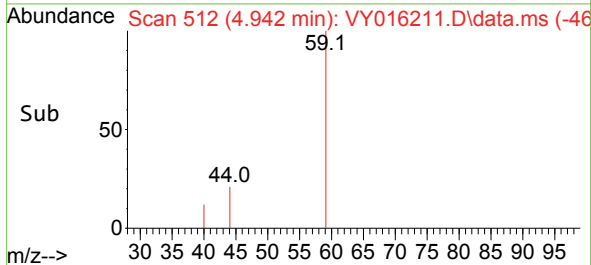
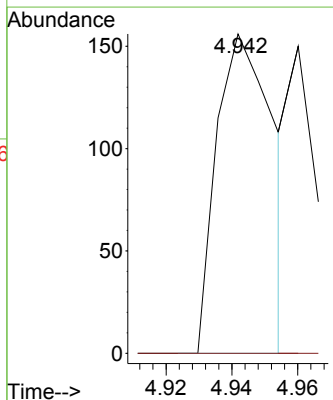
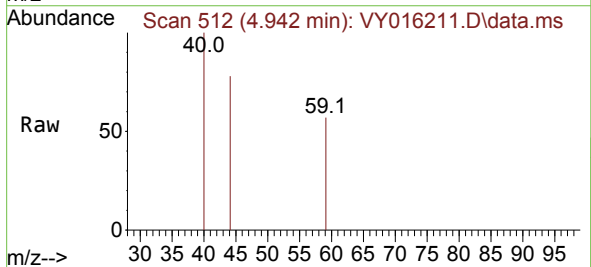


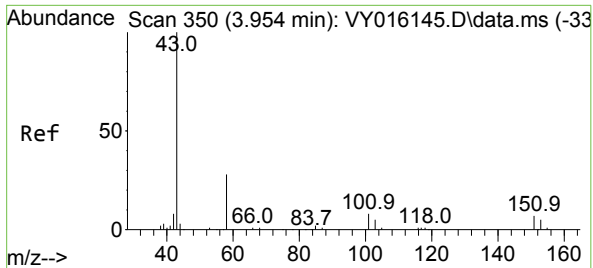
Tgt Ion:168 Resp: 95857
 Ion Ratio Lower Upper
 168 100
 99 52.5 43.4 65.0



#11
 Tert butyl alcohol
 Concen: 2.790 ug/l
 RT: 4.942 min Scan# 512
 Delta R.T. -0.018 min
 Lab File: VY016211.D
 Acq: 03 Nov 2023 13:36

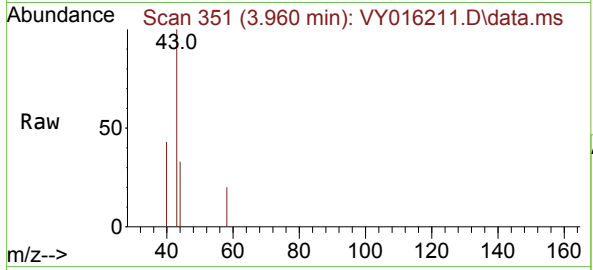
Tgt Ion: 59 Resp: 187
 Ion Ratio Lower Upper
 59 100
 57 0.0 3.0 4.4#



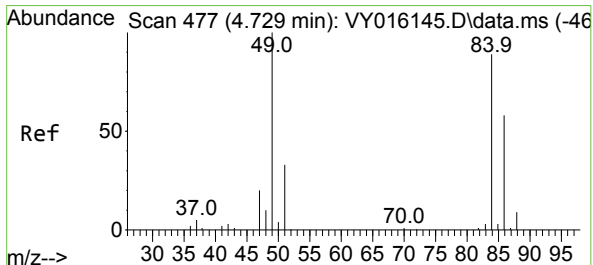
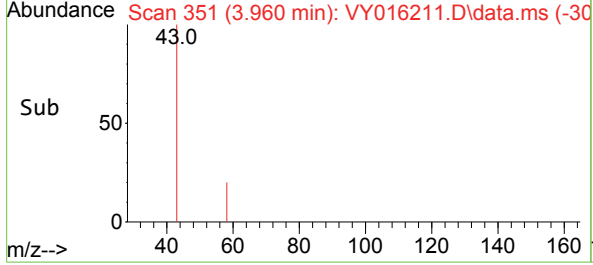
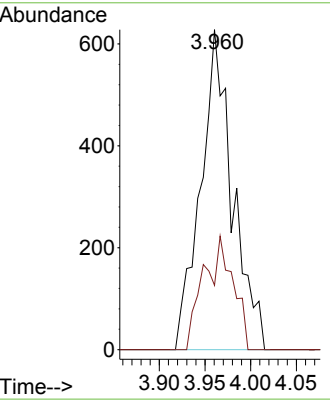


#16
 Acetone
 Concen: Below Cal
 RT: 3.960 min Scan# 351
 Delta R.T. 0.006 min
 Lab File: VY016211.D
 Acq: 03 Nov 2023 13:36

Instrument :
 MSVOA_Y
 ClientSampleId :

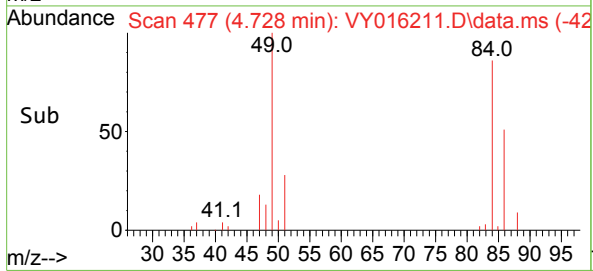
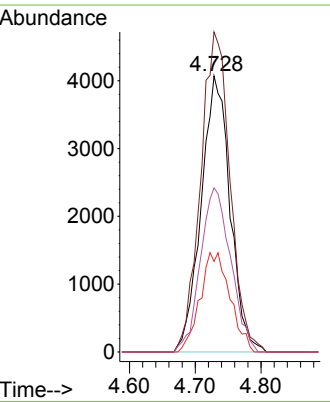
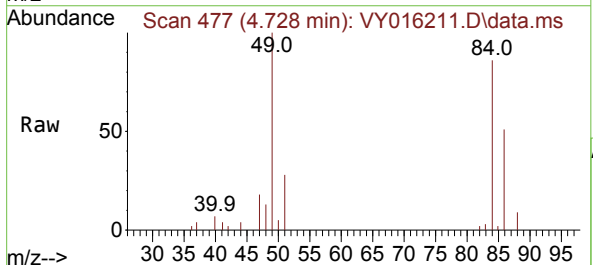


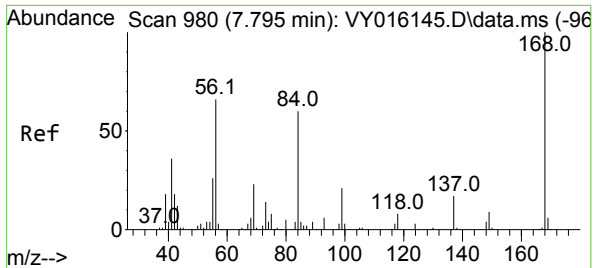
Tgt Ion: 43 Resp: 1522
 Ion Ratio Lower Upper
 43 100
 58 20.1 22.7 34.1#



#20
 Methylene Chloride
 Concen: 11.258 ug/l
 RT: 4.728 min Scan# 477
 Delta R.T. -0.001 min
 Lab File: VY016211.D
 Acq: 03 Nov 2023 13:36

Tgt Ion: 84 Resp: 12424
 Ion Ratio Lower Upper
 84 100
 49 115.9 106.9 160.3
 51 32.8 33.2 49.8#
 86 59.5 51.0 76.6

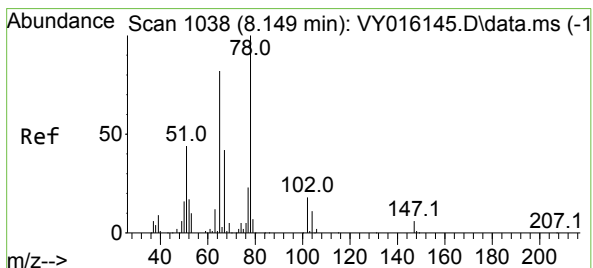
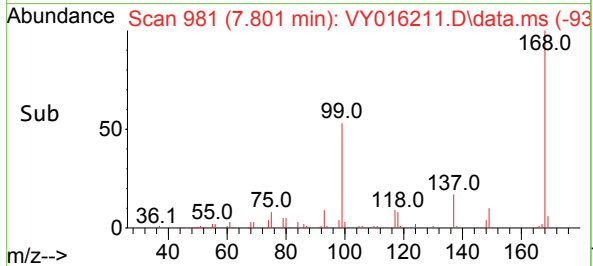
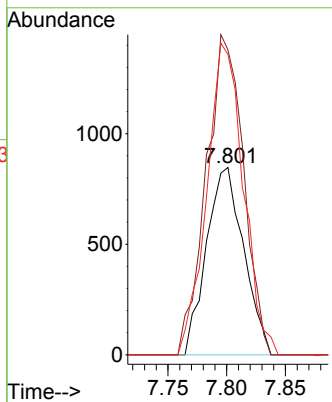
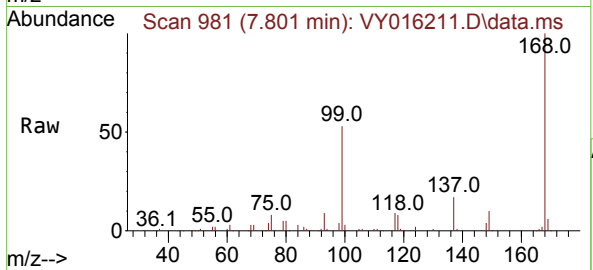




#31
 Cyclohexane
 Concen: 1.353 ug/l
 RT: 7.801 min Scan# 91
 Delta R.T. 0.006 min
 Lab File: VY016211.D
 Acq: 03 Nov 2023 13:36

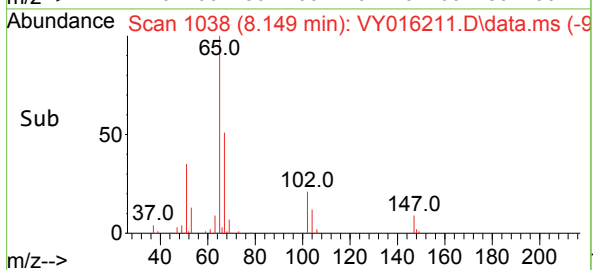
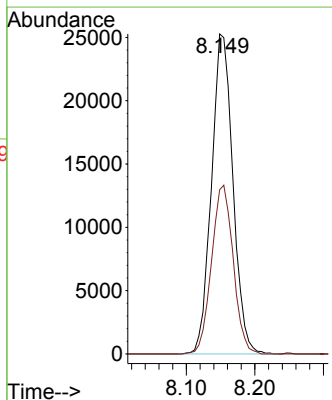
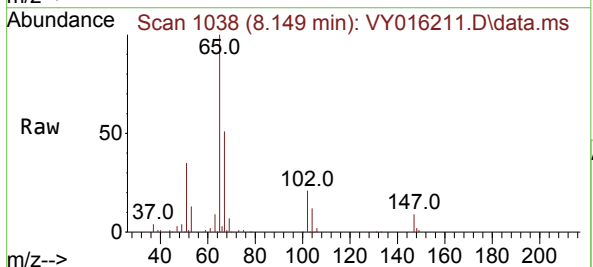
Instrument :
 MSVOA_Y
 ClientSampleId :

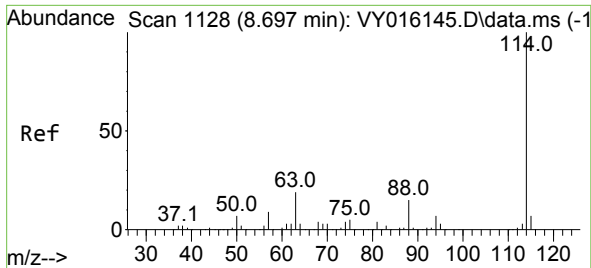
Tgt Ion	Resp	Lower	Upper
56	1866		
69	162.8	27.8	41.6#
84	160.3	66.4	99.6#



#33
 1,2-Dichloroethane-d4
 Concen: 61.116 ug/l
 RT: 8.149 min Scan# 1038
 Delta R.T. -0.000 min
 Lab File: VY016211.D
 Acq: 03 Nov 2023 13:36

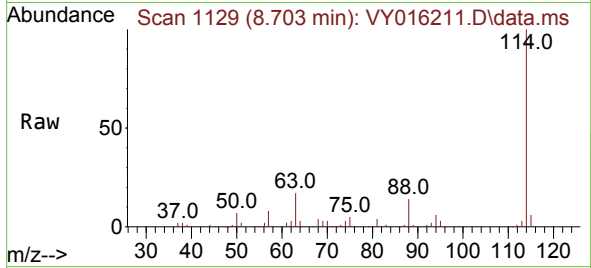
Tgt Ion	Resp	Lower	Upper
65	54819		
67	53.3	0.0	101.8



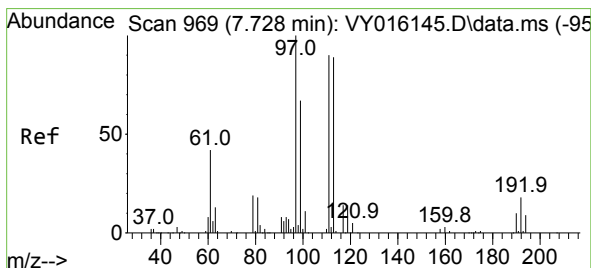
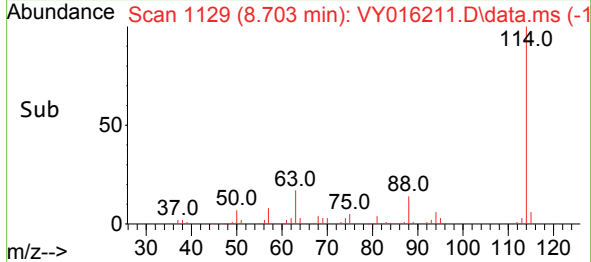
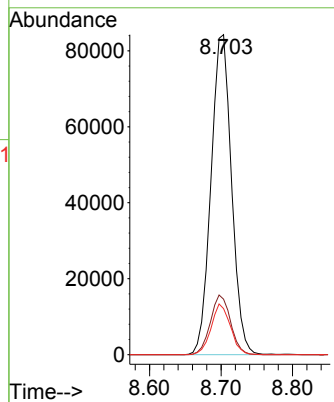


#34
 1,4-Difluorobenzene
 Concen: 50.000 ug/l
 RT: 8.703 min Scan# 1129
 Delta R.T. 0.006 min
 Lab File: VY016211.D
 Acq: 03 Nov 2023 13:36

Instrument :
 MSVOA_Y
 ClientSampleId :

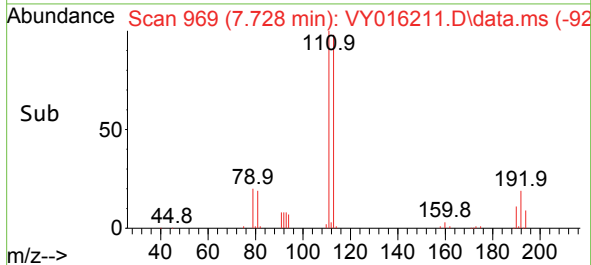
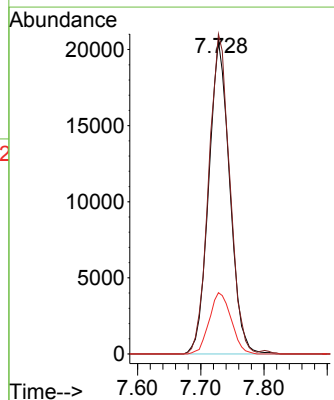
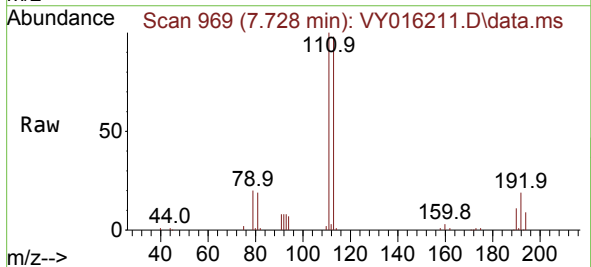


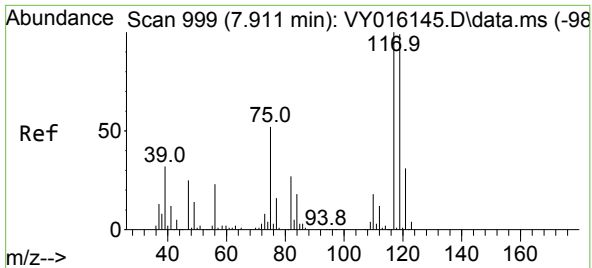
Tgt Ion:114 Resp: 167957
 Ion Ratio Lower Upper
 114 100
 63 17.4 0.0 42.4
 88 14.4 0.0 30.6



#35
 Dibromofluoromethane
 Concen: 47.302 ug/l
 RT: 7.728 min Scan# 969
 Delta R.T. -0.000 min
 Lab File: VY016211.D
 Acq: 03 Nov 2023 13:36

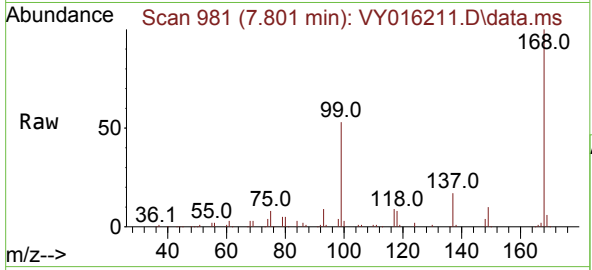
Tgt Ion:113 Resp: 47364
 Ion Ratio Lower Upper
 113 100
 111 102.7 81.3 121.9
 192 20.5 16.9 25.3





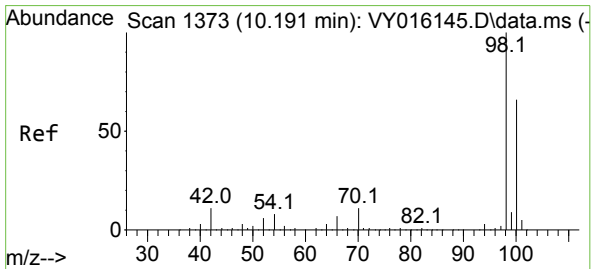
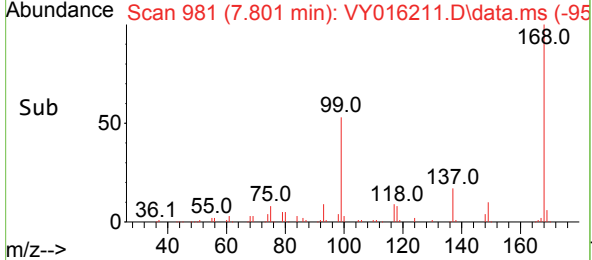
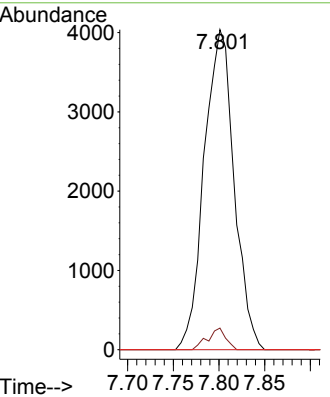
#38
 Carbon Tetrachloride
 Concen: 6.422 ug/l
 RT: 7.801 min Scan# 91
 Delta R.T. -0.110 min
 Lab File: VY016211.D
 Acq: 03 Nov 2023 13:36

Instrument : MSVOA_Y
 ClientSampleId :



Tgt Ion: 117 Resp: 9199

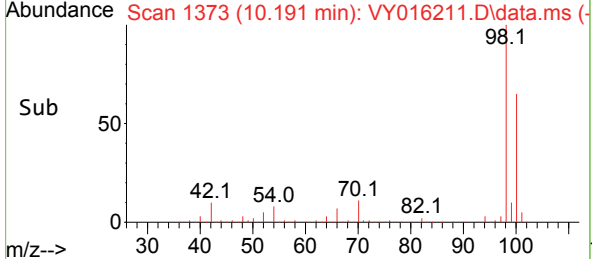
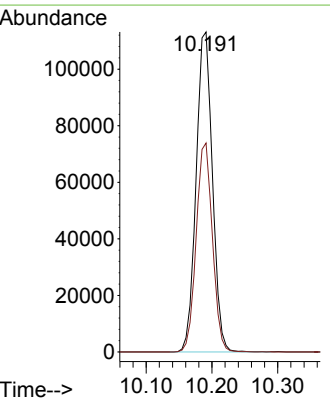
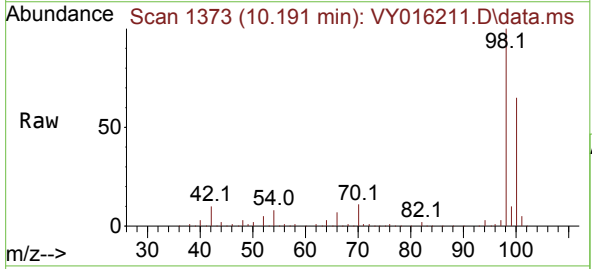
Ion	Ratio	Lower	Upper
117	100		
119	6.8	76.4	114.6#
121	0.0	25.8	38.6#

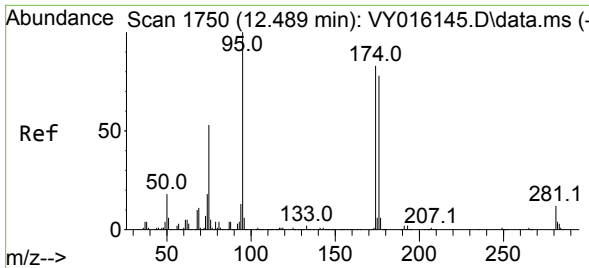


#50
 Toluene-d8
 Concen: 49.246 ug/l
 RT: 10.191 min Scan# 1373
 Delta R.T. -0.000 min
 Lab File: VY016211.D
 Acq: 03 Nov 2023 13:36

Tgt Ion: 98 Resp: 195506

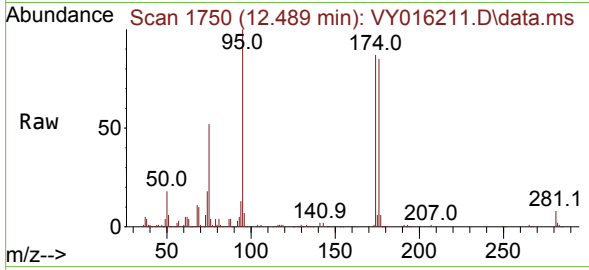
Ion	Ratio	Lower	Upper
98	100		
100	64.9	50.1	75.1





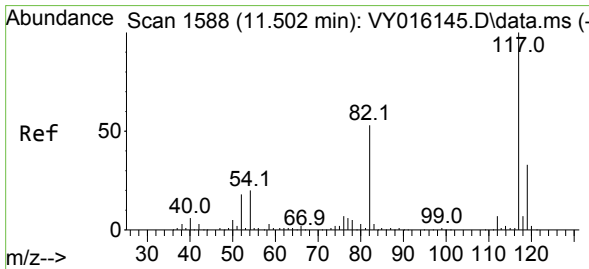
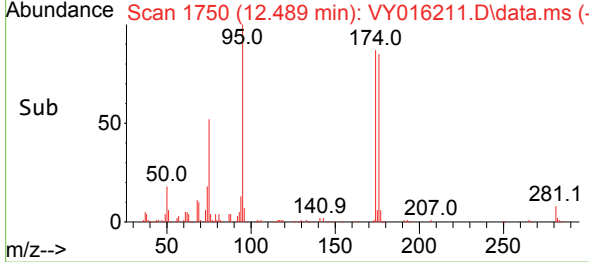
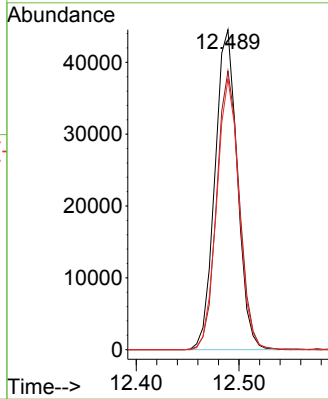
#62
 4-Bromofluorobenzene
 Concen: 49.592 ug/l
 RT: 12.489 min Scan# 1750
 Delta R.T. -0.000 min
 Lab File: VY016211.D
 Acq: 03 Nov 2023 13:36

Instrument : MSVOA_Y
 ClientSampleId :



Tgt Ion: 95 Resp: 67322

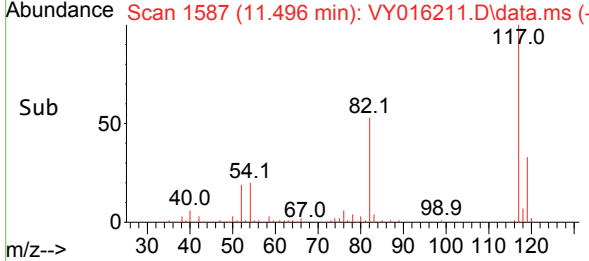
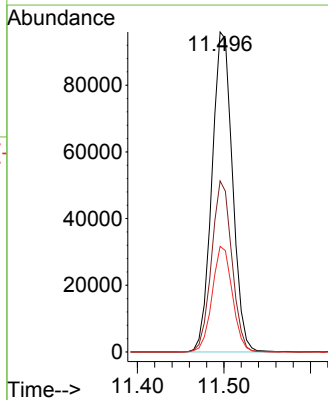
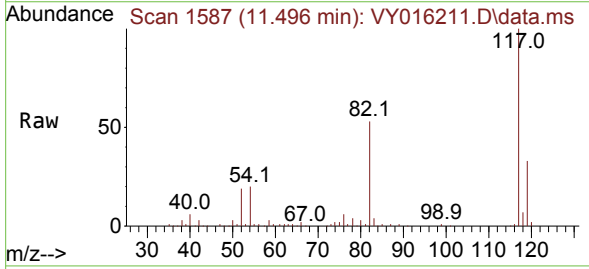
Ion	Ratio	Lower	Upper
95	100		
174	87.6	0.0	178.2
176	84.7	0.0	173.8

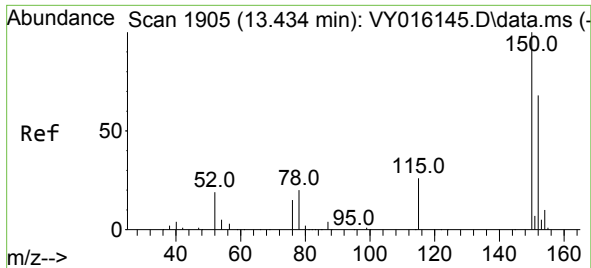


#63
 Chlorobenzene-d5
 Concen: 50.000 ug/l
 RT: 11.496 min Scan# 1587
 Delta R.T. -0.006 min
 Lab File: VY016211.D
 Acq: 03 Nov 2023 13:36

Tgt Ion: 117 Resp: 158153

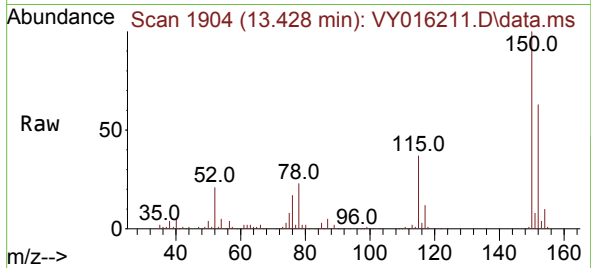
Ion	Ratio	Lower	Upper
117	100		
82	53.4	43.4	65.0
119	33.0	26.3	39.5



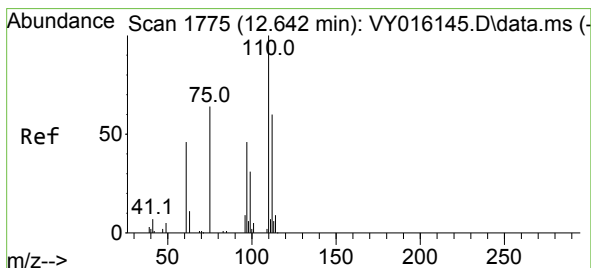
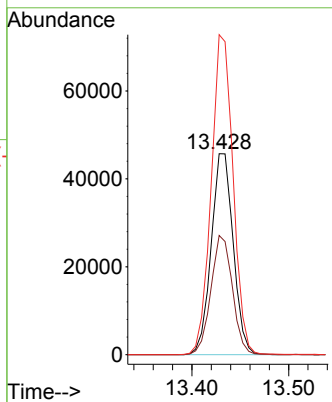
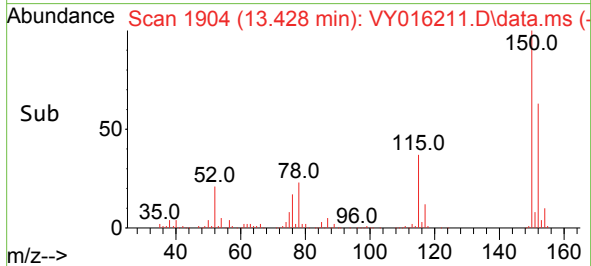


#72
 1,4-Dichlorobenzene-d4
 Concen: 50.000 ug/l
 RT: 13.428 min Scan# 1904
 Delta R.T. -0.006 min
 Lab File: VY016211.D
 Acq: 03 Nov 2023 13:36

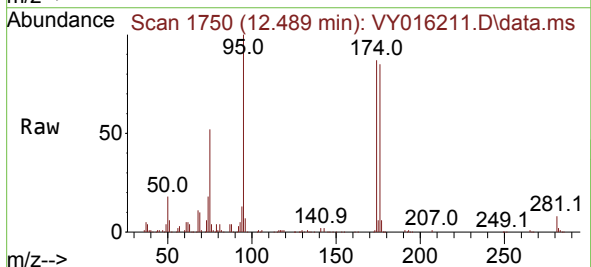
Instrument :
 MSVOA_Y
 ClientSampleId :



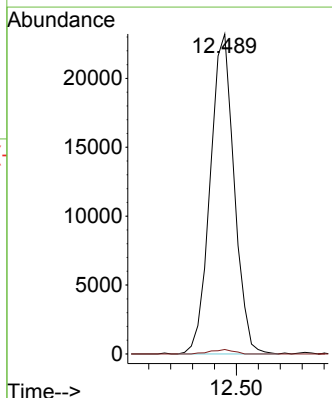
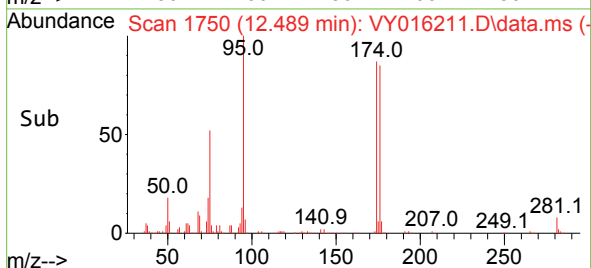
Tgt Ion:152 Resp: 72278
 Ion Ratio Lower Upper
 152 100
 115 57.8 28.8 86.5
 150 157.9 0.0 348.8

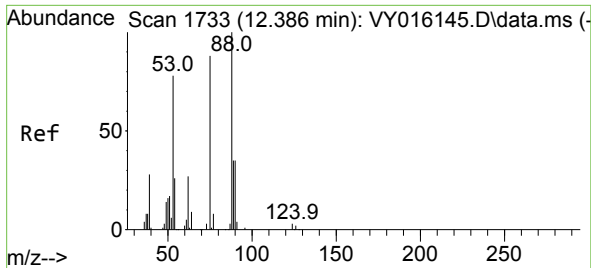


#76
 1,2,3-Trichloropropane
 Concen: 51.859 ug/l
 RT: 12.489 min Scan# 1750
 Delta R.T. -0.152 min
 Lab File: VY016211.D
 Acq: 03 Nov 2023 13:36



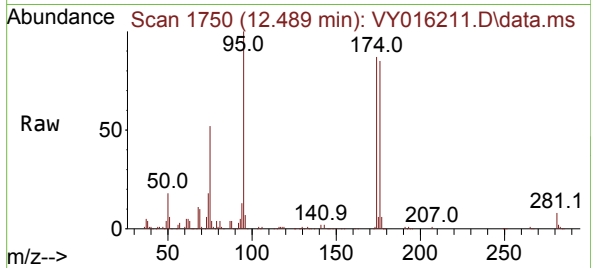
Tgt Ion: 75 Resp: 35298
 Ion Ratio Lower Upper
 75 100
 77 1.3 0.0 0.0#





#81
 trans-1,4-Dichloro-2-butene
 Concen: 112.443 ug/l
 RT: 12.489 min Scan# 1
 Delta R.T. 0.104 min
 Lab File: VY016211.D
 Acq: 03 Nov 2023 13:36

Instrument :
 MSVOA_Y
 ClientSampleId :



Tgt Ion: 75 Resp: 35298
 Ion Ratio Lower Upper
 75 100
 53 0.1 77.8 116.8#
 89 0.1 37.4 56.0#

