

Data Path : Z:\voasrv\HPCHEM1\MSVOA_Y\Data\VY110323\
 Data File : VY016212.D
 Acq On : 03 Nov 2023 14:00
 Operator : SY/MD
 Sample : 05229-01
 Misc : 3.61g/5.0mL/MSVOA_Y/SOIL
 ALS Vial : 13 Sample Multiplier: 1

Instrument :
 MSVOA_Y
 ClientSampleId :
 HR-1-110223

Integration Parameters: RTEINT.P

Integrator: RTE
 Smoothing : ON
 Sampling : 1
 Start Thrs : 0.2
 Stop Thrs : 0

Filtering: 5
 Min Area: 3 % of largest Peak
 Max Peaks: 100
 Peak Location: TOP

If leading or trailing edge < 100 prefer < Baseline drop else tangent >
 Peak separation: 5

Method : Z:\voasrv\HPCHEM1\MSVOA_Y\methods\82Y103123S.M
 Title : SW846 8260

Signal : TIC: VY016212.D\data.ms

peak #	R.T. min	first scan	max scan	last scan	PK TY	peak height	corr. area	corr. % max.	% of total
1	4.728	464	477	495	rVB2	20829	65241	10.74%	1.508%
2	5.765	634	647	656	rBV4	8730	27621	4.55%	0.639%
3	7.728	959	969	975	rBV	80430	191189	31.49%	4.420%
4	7.801	975	981	991	rVB	141455	317448	52.28%	7.340%
5	8.149	1024	1038	1049	rBV2	90196	241221	39.72%	5.577%
6	8.697	1119	1128	1139	rBV	222130	444435	73.19%	10.276%
7	10.191	1365	1373	1380	rBV	358287	607235	100.00%	14.040%
8	10.252	1380	1383	1391	rVB2	6217	10264	1.69%	0.237%
9	10.587	1431	1438	1450	rVB	36069	66581	10.96%	1.539%
10	11.325	1552	1559	1566	rVB2	19891	34908	5.75%	0.807%
11	11.502	1580	1588	1595	rBV	342516	557796	91.86%	12.897%
12	11.709	1614	1622	1628	rBV3	6356	15047	2.48%	0.348%
13	12.044	1663	1677	1681	rBV6	4666	12051	1.98%	0.279%
14	12.489	1743	1750	1759	rBV2	297811	493921	81.34%	11.420%
15	12.745	1785	1792	1795	rBV	6368	10477	1.73%	0.242%
16	12.812	1800	1803	1809	rVB3	11705	18945	3.12%	0.438%
17	12.977	1826	1830	1837	rVB	5005	9859	1.62%	0.228%
18	13.129	1848	1855	1860	rBV	13284	23029	3.79%	0.532%
19	13.190	1860	1865	1869	rBV2	9778	19901	3.28%	0.460%
20	13.318	1883	1886	1891	rVB5	5293	9106	1.50%	0.211%
21	13.434	1891	1905	1914	rBV	356576	577112	95.04%	13.343%
22	13.629	1930	1937	1941	rBV3	17910	36901	6.08%	0.853%
23	13.672	1941	1944	1953	rVB3	14981	31386	5.17%	0.726%
24	13.757	1953	1958	1963	rBV2	23138	41754	6.88%	0.965%
25	13.898	1976	1981	1982	rBV	7004	9534	1.57%	0.220%
26	13.922	1983	1985	1988	rVV	7667	7867	1.30%	0.182%
27	13.977	1989	1994	1998	rVB3	18097	29765	4.90%	0.688%
28	14.087	2007	2012	2017	rBV3	16399	29172	4.80%	0.674%
29	14.269	2037	2042	2045	rBV6	6902	11620	1.91%	0.269%
30	14.343	2051	2054	2057	rVB2	8788	11377	1.87%	0.263%
31	14.391	2057	2062	2064	rBV5	9501	13798	2.27%	0.319%
32	14.422	2064	2067	2071	rVB4	6901	10272	1.69%	0.237%
33	14.525	2082	2084	2088	rVB4	5101	6268	1.03%	0.145%
34	14.574	2088	2092	2095	rBV4	12440	21188	3.49%	0.490%
35	14.617	2096	2099	2104	rVB3	18687	25276	4.16%	0.584%
36	14.690	2105	2111	2116	rVV4	25240	53390	8.79%	1.234%

Data Path : Z:\voasrv\HPCHEM1\MSVOA_Y\Data\VY110323\
Data File : VY016212.D
Acq On : 03 Nov 2023 14:00
Operator : SY/MD
Sample : 05229-01
Misc : 3.61g/5.0mL/MSVOA_Y/SOIL
ALS Vial : 13 Sample Multiplier: 1

Instrument :
MSVOA_Y
ClientSampleId :
HR-1-110223

Integration Parameters: RTEINT.P

Integrator: RTE

Smoothing : ON

Sampling : 1

Start Thrs: 0.2

Stop Thrs : 0

Filtering: 5

Min Area: 3 % of largest Peak

Max Peaks: 100

Peak Location: TOP

If leading or trailing edge < 100 prefer < Baseline drop else tangent >

Peak separation: 5

Method : Z:\voasrv\HPCHEM1\MSVOA_Y\methods\82Y103123S.M

Title : SW846 8260

37	14.842	2131	2136	2142	rVB	21031	32915	5.42%	0.761%
38	14.952	2149	2154	2157	rBV5	10134	18442	3.04%	0.426%
39	15.220	2194	2198	2199	rBV3	6470	9165	1.51%	0.212%
40	15.324	2208	2215	2218	rBV2	11728	32788	5.40%	0.758%
41	15.531	2242	2249	2257	rVB7	11579	34501	5.68%	0.798%
42	15.739	2271	2283	2292	rBV6	24452	70917	11.68%	1.640%
43	16.043	2329	2333	2339	rVB5	7415	12194	2.01%	0.282%
44	16.232	2360	2364	2370	rVB6	7139	14016	2.31%	0.324%
45	16.300	2372	2375	2381	rVB7	4761	7164	1.18%	0.166%

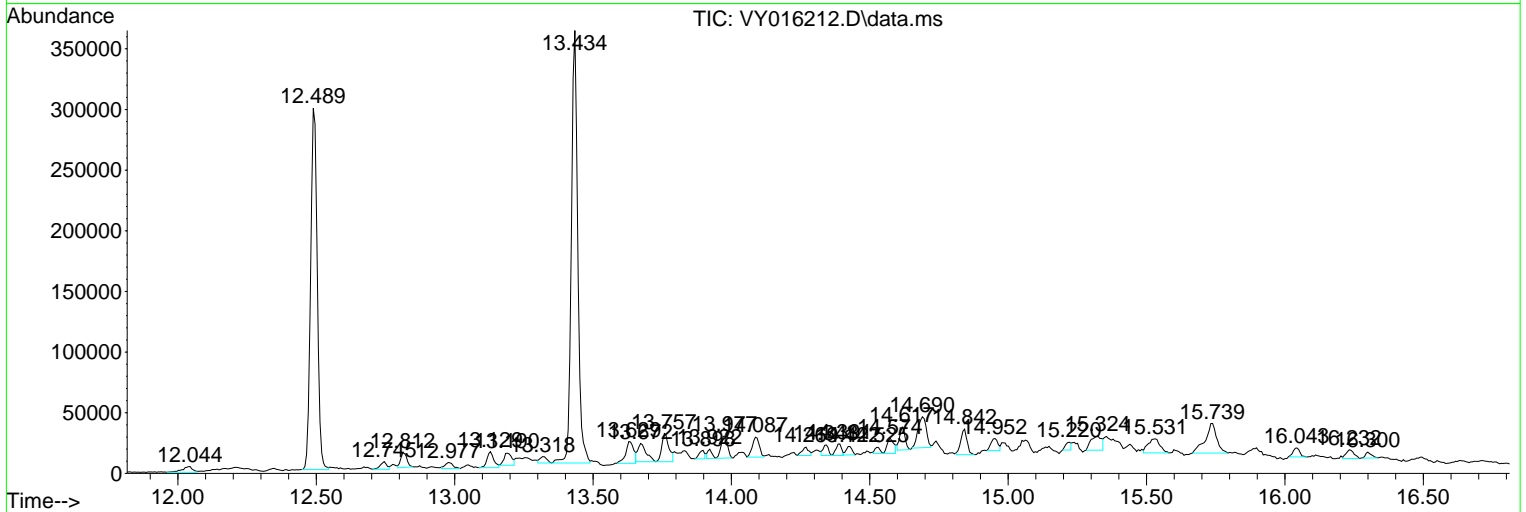
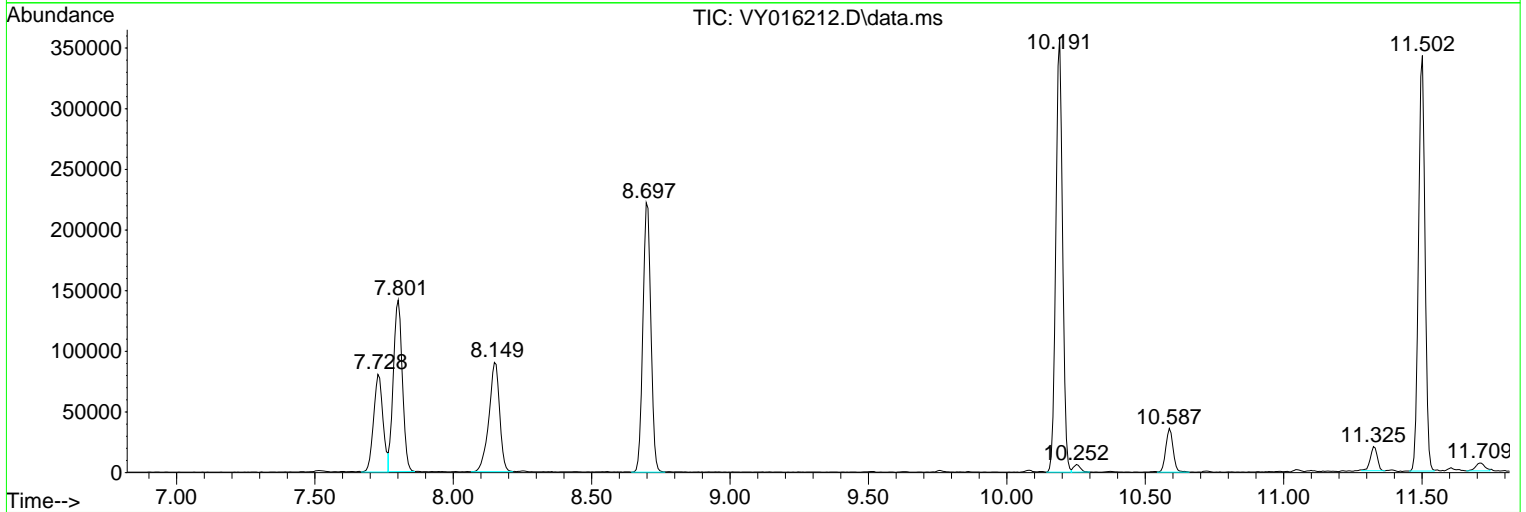
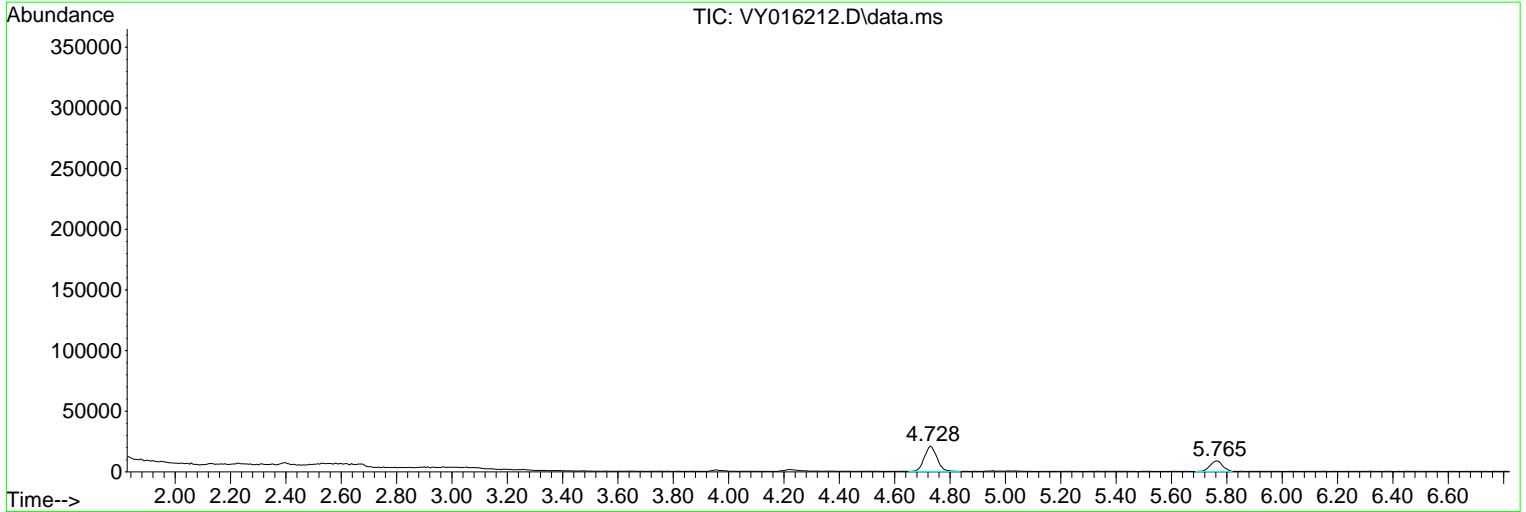
Sum of corrected areas: 4325057

Data Path : Z:\voasrv\HPCHEM1\MSVOA_Y\Data\VY110323\
 Data File : VY016212.D
 Acq On : 03 Nov 2023 14:00
 Operator : SY/MD
 Sample : 05229-01
 Misc : 3.61g/5.0mL/MSVOA_Y/SOIL
 ALS Vial : 13 Sample Multiplier: 1

Instrument :
 MSVOA_Y
 ClientSampleId :
 HR-1-110223

Quant Method : Z:\voasrv\HPCHEM1\MSVOA_Y\methods\82Y103123S.M
 Quant Title : SW846 8260

TIC Library : C:\Database\NIST20.L
 TIC Integration Parameters: LSCINT.P



Data Path : Z:\voasrv\HPCHEM1\MSVOA_Y\Data\VY110323\
 Data File : VY016212.D
 Acq On : 03 Nov 2023 14:00
 Operator : SY/MD
 Sample : 05229-01
 Misc : 3.61g/5.0mL/MSVOA_Y/SOIL
 ALS Vial : 13 Sample Multiplier: 1

Instrument :
 MSVOA_Y
 ClientSampleId :
 HR-1-110223

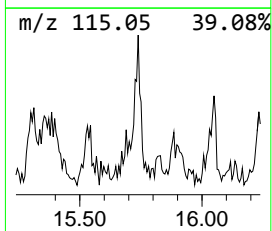
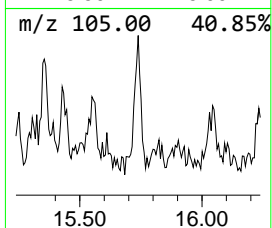
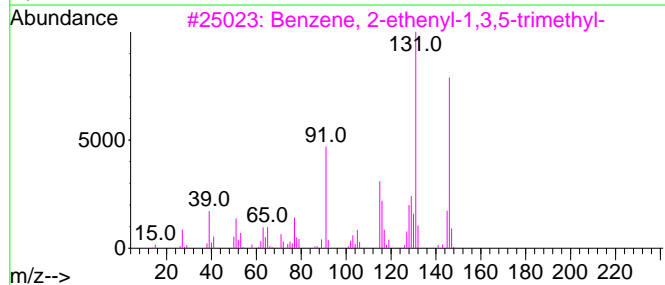
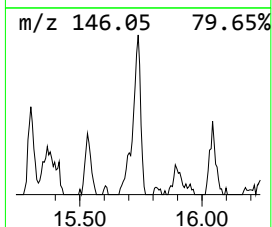
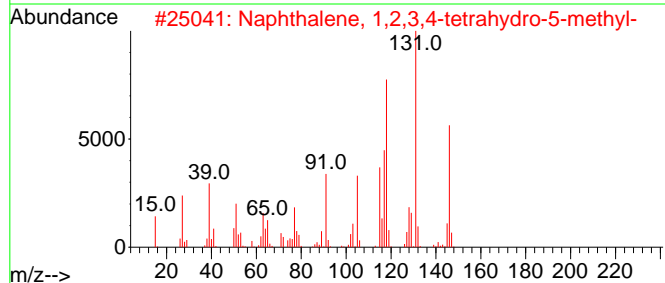
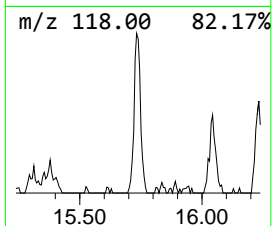
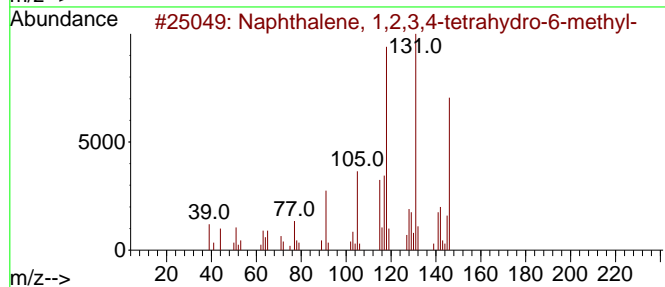
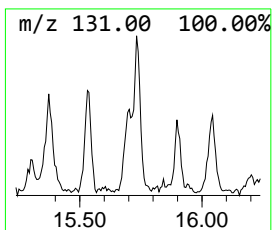
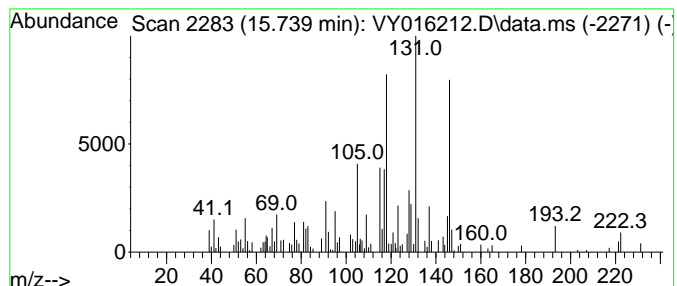
Quant Method : Z:\voasrv\HPCHEM1\MSVOA_Y\methods\82Y103123S.M
 Quant Title : SW846 8260

TIC Library : C:\Database\NIST20.L
 TIC Integration Parameters: LSCINT.P

 Peak Number 2 Naphthalene, 1,2,3,4-tetra... Concentration Rank 1

R.T.	EstConc	Area	Relative to ISTD	R.T.
15.739	6.14 ug/l	70917	1,4-Dichlorobenzene-d4	13.434

Hit#	of	5	Tentative ID	MW	MolForm	CAS#	Qual
1			Naphthalene, 1,2,3,4-tetrahydro-...	146	C11H14	001680-51-9	91
2			Naphthalene, 1,2,3,4-tetrahydro-...	146	C11H14	002809-64-5	81
3			Benzene, 2-ethenyl-1,3,5-trimethyl-	146	C11H14	000769-25-5	55
4			2-Propyn-1-ol, 3-(4-methylphenyl)-	146	C10H10O	016017-24-6	53
5			Benzene, (1,2-dimethyl-1-propenyl)-	146	C11H14	000769-57-3	49



Data Path : Z:\voasrv\HPCHEM1\MSVOA_Y\Data\VY110323\
Data File : VY016212.D
Acq On : 03 Nov 2023 14:00
Operator : SY/MD
Sample : 05229-01
Misc : 3.61g/5.0mL/MSVOA_Y/SOIL
ALS Vial : 13 Sample Multiplier: 1

Instrument :
MSVOA_Y
ClientSampleId :
HR-1-110223

Quant Method : Z:\voasrv\HPCHEM1\MSVOA_Y\methods\82Y103123S.M
Quant Title : SW846 8260

TIC Library : C:\Database\NIST0.L
TIC Integration Parameters: LSCINT.P

TIC Top Hit name	RT	EstConc	Units	Response	--Internal Standard--			
					#	RT	Resp	Conc
Naphthalene, 1,...	15.739	6.1	ug/l	70917	4	13.434	577112	50.0