

Data Path : Z:\voasrv\HPCHEM1\MSVOA_Y\Data\VY110624\
 Data File : VY020186.D
 Acq On : 06 Nov 2024 17:03
 Operator : SY/MD
 Sample : P4659-03
 Misc : 4.85g/5.0mL/MSVOA_Y/SOIL/B
 ALS Vial : 14 Sample Multiplier: 1

Instrument :
 MSVOA_Y
 ClientSampleId :

Quant Time: Nov 07 00:28:55 2024
 Quant Method : Z:\voasrv\HPCHEM1\MSVOA_Y\methods\82Y103024S.M
 Quant Title : SW846 8260
 QLast Update : Thu Oct 31 15:23:13 2024
 Response via : Initial Calibration

Compound	R.T.	QIon	Response	Conc	Units	Dev(Min)
Internal Standards						
1) Pentafluorobenzene	7.707	168	1619	50.000	ug/l	# 0.00
34) 1,4-Difluorobenzene	8.622	114	2941	50.000	ug/l	0.00
63) Chlorobenzene-d5	11.420	117	1663	50.000	ug/l	0.00
72) 1,4-Dichlorobenzene-d4	13.346	152	363	50.000	ug/l	0.00
System Monitoring Compounds						
33) 1,2-Dichloroethane-d4	8.061	65	1474	72.948	ug/l	0.00
Spiked Amount	50.000	Range	50 - 163	Recovery	=	145.900%
35) Dibromofluoromethane	7.622	113	1101	58.881	ug/l	-0.01
Spiked Amount	50.000	Range	54 - 147	Recovery	=	117.760%
50) Toluene-d8	10.109	98	3088	41.489	ug/l	0.00
Spiked Amount	50.000	Range	58 - 134	Recovery	=	82.980%
62) 4-Bromofluorobenzene	12.408	95	318	13.154	ug/l	0.00
Spiked Amount	50.000	Range	29 - 146	Recovery	=	26.300%#
Target Compounds						
						Qvalue
3) Chloromethane	2.068	50	92	3.706	ug/l	# 43
4) Vinyl Chloride	2.172	62	124	4.653	ug/l	# 42
5) Bromomethane	2.623	94	76	4.295	ug/l	# 3
6) Chloroethane	2.812	64	27	1.570	ug/l	# 42
8) Diethyl Ether	3.379	74	58	6.388	ug/l	# 8
9) 1,1,2-Trichlorotrifluo...	4.068	101	23	1.260	ug/l	# 19
10) Methyl Iodide	4.007	142	19	1.078	ug/l	# 42
12) 1,1-Dichloroethene	3.805	96	21	1.202	ug/l	# 1
13) Acrolein	3.623	56	44	24.319	ug/l	# 15
14) Allyl chloride	4.397	41	158	5.013	ug/l	# 19
15) Acrylonitrile	5.080	53	57	13.791	ug/l	# 9
16) Acetone	3.897	43	114	24.260	ug/l	# 36
18) Methyl Acetate	4.372	43	50	4.535	ug/l	# 46
19) Methyl tert-butyl Ether	4.939	73	88	2.002	ug/l	# 54
20) Methylene Chloride	4.622	84	27	1.279	ug/l	# 12
21) trans-1,2-Dichloroethene	5.128	96	50	2.538	ug/l	# 1
23) Vinyl Acetate	5.951	43	94	2.554	ug/l	# 67
24) 1,1-Dichloroethane	6.031	63	87	2.297	ug/l	# 80
25) 2-Butanone	6.848	43	32	5.024	ug/l	# 41
28) Bromochloromethane	7.293	49	52	2.932	ug/l	# 6
29) Tetrahydrofuran	7.378	42	29	7.889	ug/l	# 26
30) Chloroform	7.408	83	50	1.330	ug/l	# 17
37) Ethyl Acetate	6.976	43	26	1.888	ug/l	# 67
38) Carbon Tetrachloride	7.707	117	139	4.785	ug/l	# 13
41) Methacrylonitrile	7.207	41	76	11.017	ug/l	# 27
45) 1,2-Dichloropropane	9.189	63	30	1.487	ug/l	# 43
48) Methyl methacrylate	9.243	41	53	4.321	ug/l	# 1
51) 4-Methyl-2-Pentanone	9.945	43	129	9.454	ug/l	# 70
53) t-1,3-Dichloropropene	10.469	75	55	2.175	ug/l	# 45
58) 2-Chloroethyl Vinyl ether	9.585	63	50	5.201	ug/l	# 45
59) 2-Hexanone	10.810	43	19	1.942	ug/l	# 19
61) 1,2-Dibromoethane	10.847	107	24	1.901	ug/l	# 2
74) N-amyl acetate	12.072	43	43	5.932	ug/l	# 42
75) 1,1,2,2-Tetrachloroethane	12.590	83	34	6.704	ug/l	# 26
76) 1,2,3-Trichloropropane	12.566	75	26	7.641	ug/l	# 100
79) 2-Chlorotoluene	12.883	91	23	1.148	ug/l	# 39

Data Path : Z:\voasrv\HPCHEM1\MSVOA_Y\Data\VY110624\
 Data File : VY020186.D
 Acq On : 06 Nov 2024 17:03
 Operator : SY/MD
 Sample : P4659-03
 Misc : 4.85g/5.0mL/MSVOA_Y/SOIL/B
 ALS Vial : 14 Sample Multiplier: 1

Instrument :
 MSVOA_Y
 ClientSampleId :

Quant Time: Nov 07 00:28:55 2024
 Quant Method : Z:\voasrv\HPCHEM1\MSVOA_Y\methods\82Y103024S.M
 Quant Title : SW846 8260
 QLast Update : Thu Oct 31 15:23:13 2024
 Response via : Initial Calibration

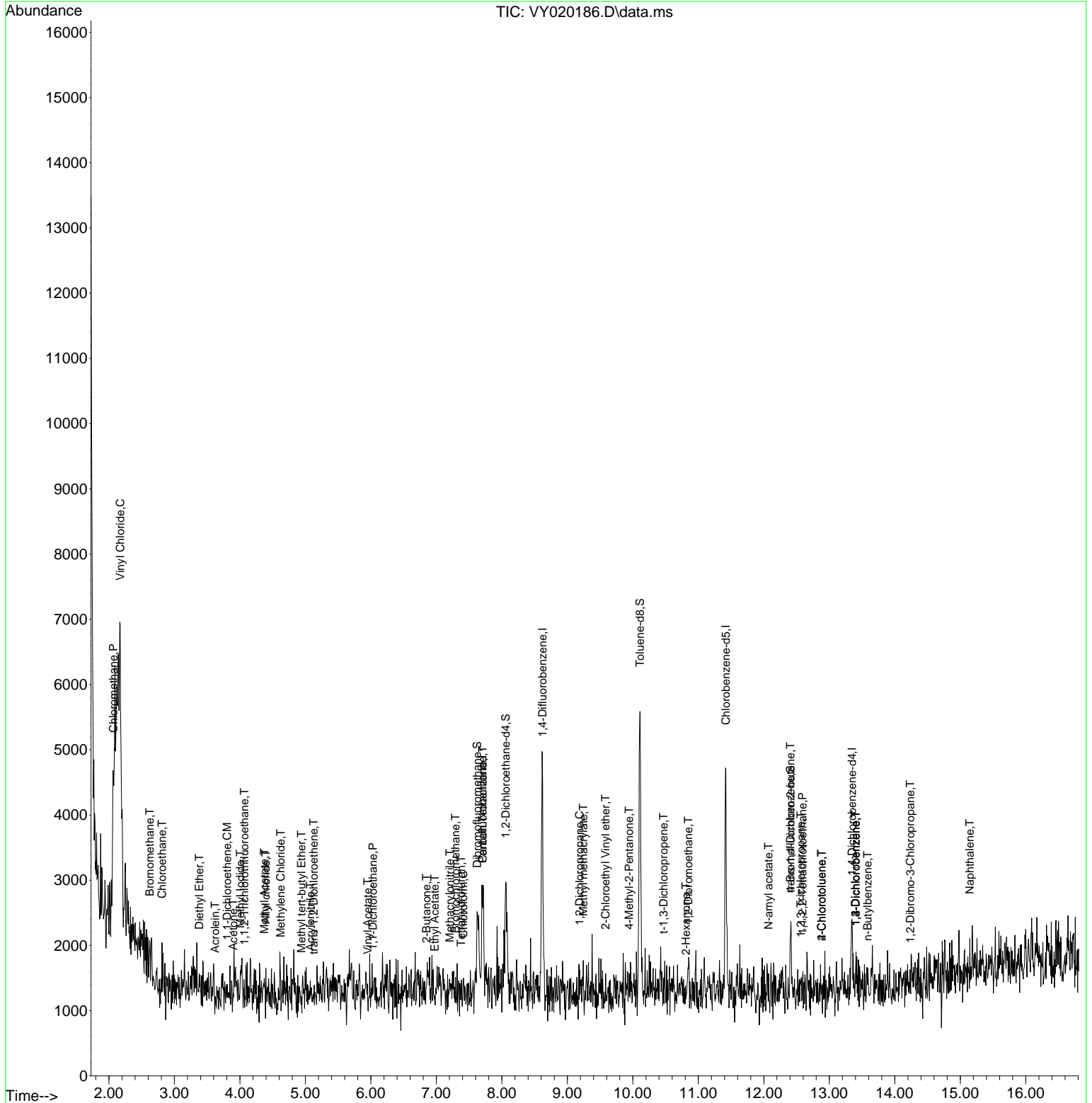
Compound	R.T.	QIon	Response	Conc	Units	Dev(Min)
81) trans-1,4-Dichloro-2-b...	12.408	75	260	164.353	ug/l #	16
82) 4-Chlorotoluene	12.883	91	23	1.126	ug/l #	39
87) 1,3-Dichlorobenzene	13.401	146	48	4.029	ug/l #	25
88) 1,4-Dichlorobenzene	13.401	146	48	4.046	ug/l #	25
89) n-Butylbenzene	13.584	91	46	1.830	ug/l #	33
91) 1,2-Dichlorobenzene	13.401	146	48	4.635	ug/l #	25
92) 1,2-Dibromo-3-Chloropr...	14.236	75	44	57.209	ug/l #	1
95) Naphthalene	15.145	128	60	5.770	ug/l #	69

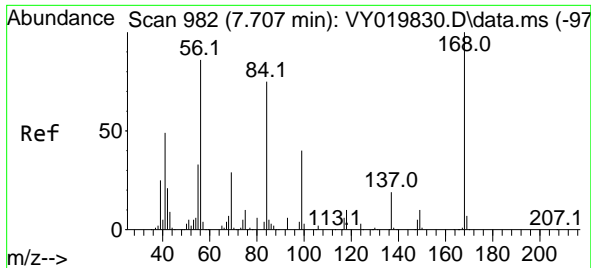
(#) = qualifier out of range (m) = manual integration (+) = signals summed

Data Path : Z:\voasrv\HPCHEM1\MSVOA_Y\Data\VY110624\
 Data File : VY020186.D
 Acq On : 06 Nov 2024 17:03
 Operator : SY/MD
 Sample : P4659-03
 Misc : 4.85g/5.0mL/MSVOA_Y/SOIL/B
 ALS Vial : 14 Sample Multiplier: 1

Instrument :
 MSVOA_Y
 ClientSampleId :

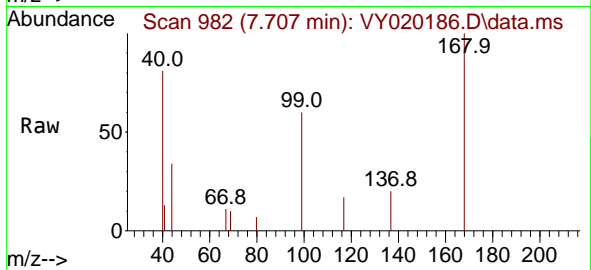
Quant Time: Nov 07 00:28:55 2024
 Quant Method : Z:\voasrv\HPCHEM1\MSVOA_Y\methods\82Y103024S.M
 Quant Title : SW846 8260
 QLast Update : Thu Oct 31 15:23:13 2024
 Response via : Initial Calibration



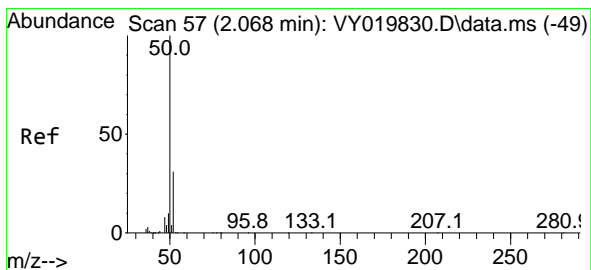
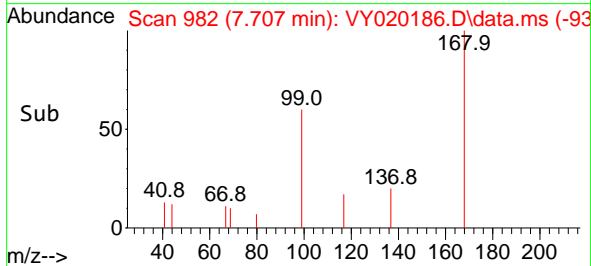
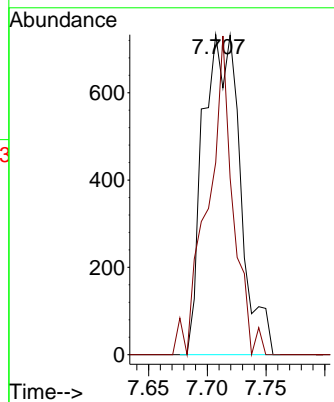


#1
 Pentafluorobenzene
 Concen: 50.000 ug/l
 RT: 7.707 min Scan# 91
 Delta R.T. 0.000 min
 Lab File: VY020186.D
 Acq: 06 Nov 2024 17:03

Instrument :
 MSVOA_Y
 ClientSampleId :

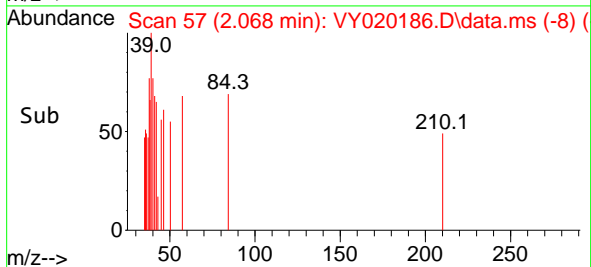
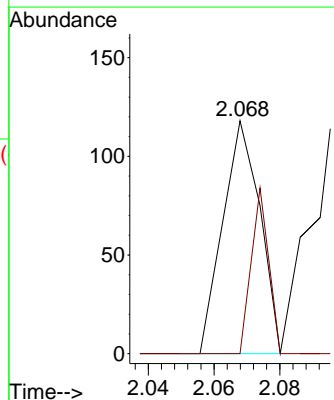
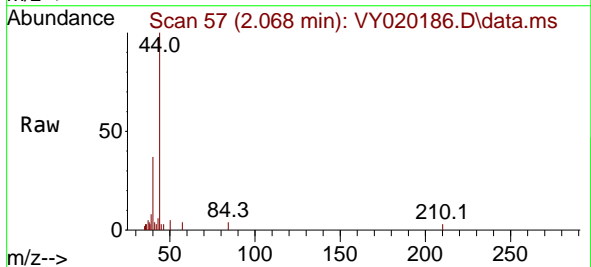


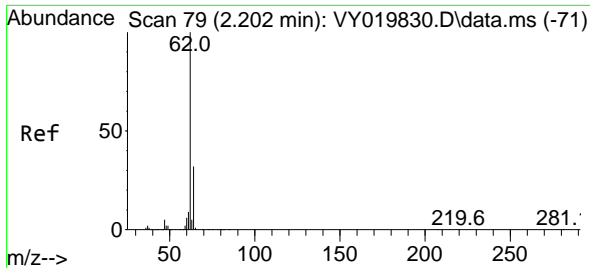
Tgt Ion:168 Resp: 1619
 Ion Ratio Lower Upper
 168 100
 99 60.0 39.1 58.7#



#3
 Chloromethane
 Concen: 3.706 ug/l
 RT: 2.068 min Scan# 57
 Delta R.T. 0.000 min
 Lab File: VY020186.D
 Acq: 06 Nov 2024 17:03

Tgt Ion: 50 Resp: 92
 Ion Ratio Lower Upper
 50 100
 52 0.0 25.6 38.4#

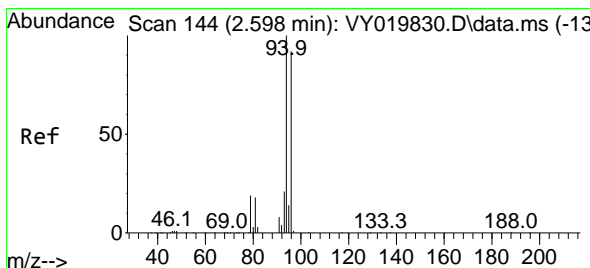
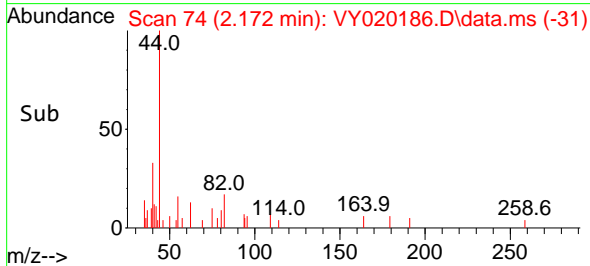
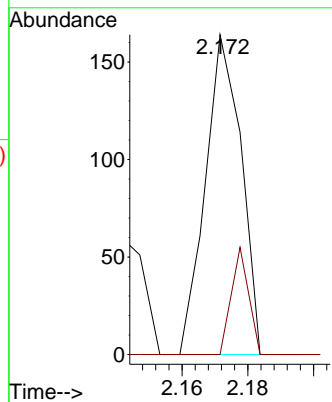
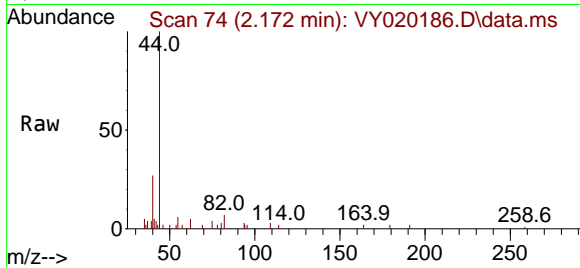




#4
 Vinyl Chloride
 Concen: 4.653 ug/l
 RT: 2.172 min Scan# 74
 Delta R.T. -0.036 min
 Lab File: VY020186.D
 Acq: 06 Nov 2024 17:03

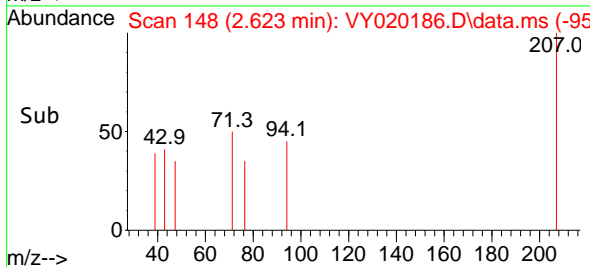
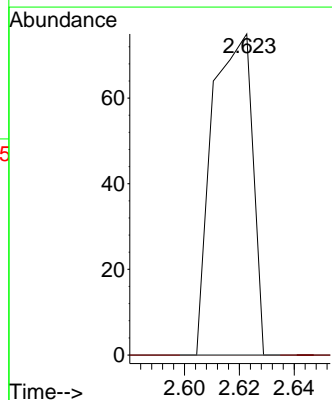
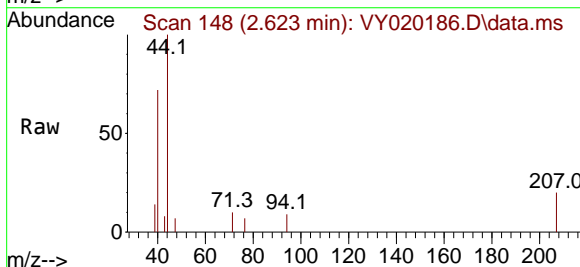
Instrument :
 MSVOA_Y
 ClientSampleId :

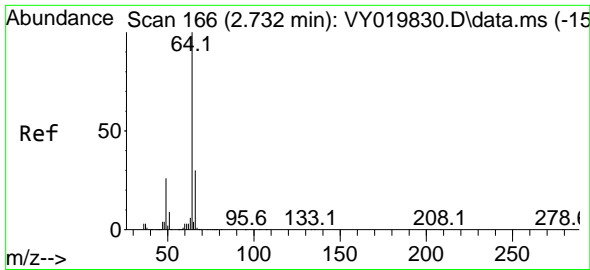
Tgt Ion: 62 Resp: 124
 Ion Ratio Lower Upper
 62 100
 64 0.0 26.1 39.1#



#5
 Bromomethane
 Concen: 4.295 ug/l
 RT: 2.623 min Scan# 148
 Delta R.T. 0.025 min
 Lab File: VY020186.D
 Acq: 06 Nov 2024 17:03

Tgt Ion: 94 Resp: 76
 Ion Ratio Lower Upper
 94 100
 96 0.0 74.1 111.1#

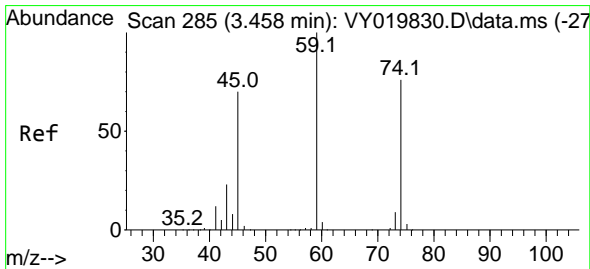
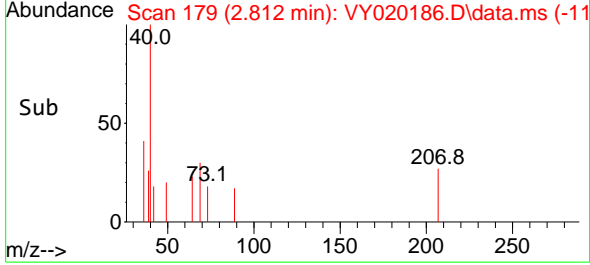
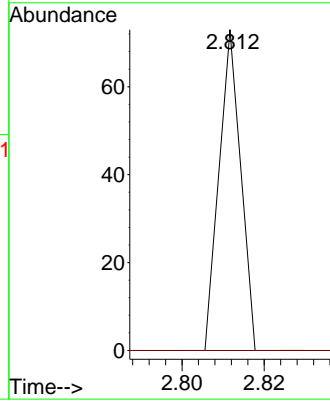
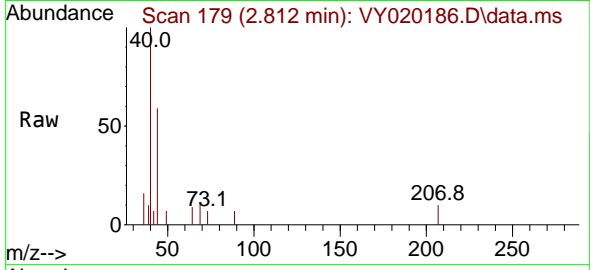




#6
 Chloroethane
 Concen: 1.570 ug/l
 RT: 2.812 min Scan# 11
 Delta R.T. 0.073 min
 Lab File: VY020186.D
 Acq: 06 Nov 2024 17:03

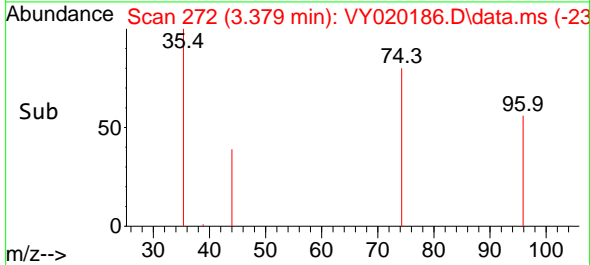
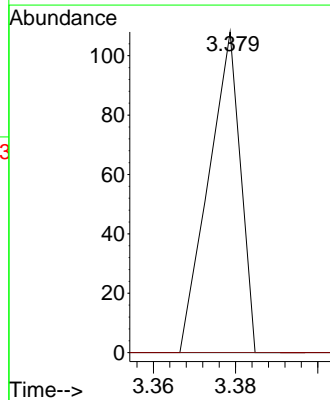
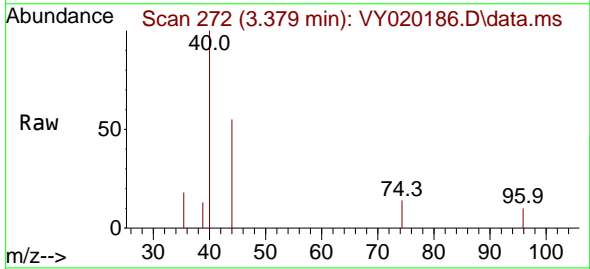
Instrument :
 MSVOA_Y
 ClientSampleId :

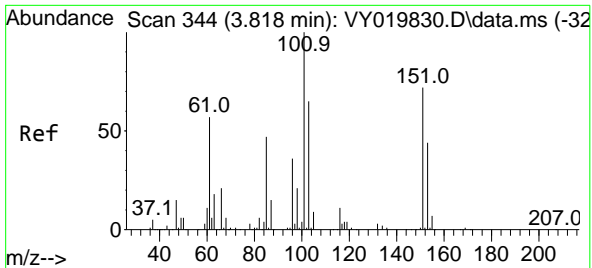
Tgt Ion: 64 Resp: 27
 Ion Ratio Lower Upper
 64 100
 66 0.0 26.1 39.1#



#8
 Diethyl Ether
 Concen: 6.388 ug/l
 RT: 3.379 min Scan# 272
 Delta R.T. -0.079 min
 Lab File: VY020186.D
 Acq: 06 Nov 2024 17:03

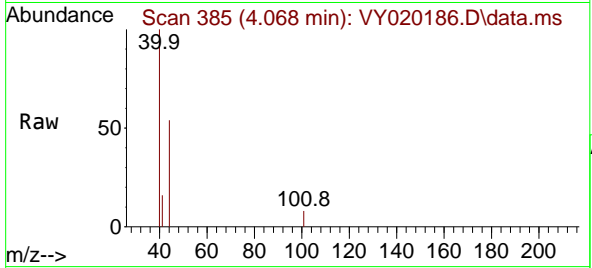
Tgt Ion: 74 Resp: 58
 Ion Ratio Lower Upper
 74 100
 45 0.0 41.3 124.1#



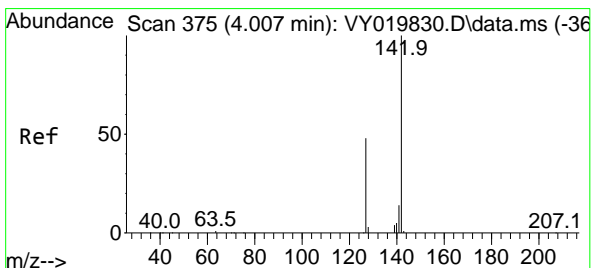
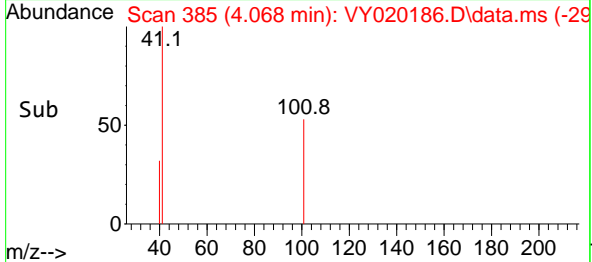
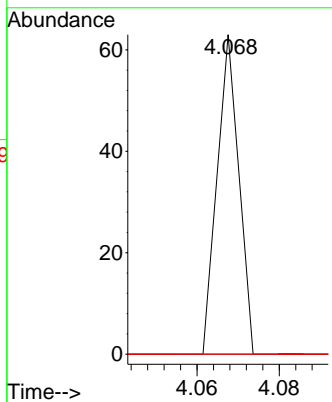


#9
 1,1,2-Trichlorotrifluoroethane
 Concen: 1.260 ug/l
 RT: 4.068 min Scan# 385
 Delta R.T. 0.256 min
 Lab File: VY020186.D
 Acq: 06 Nov 2024 17:03

Instrument :
 MSVOA_Y
 ClientSampleId :

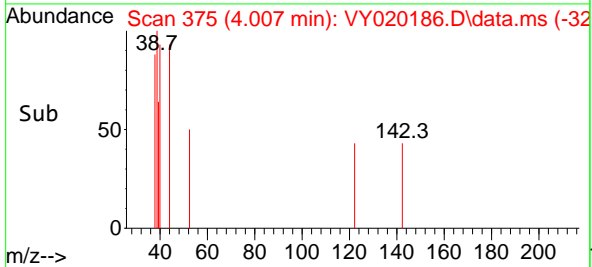
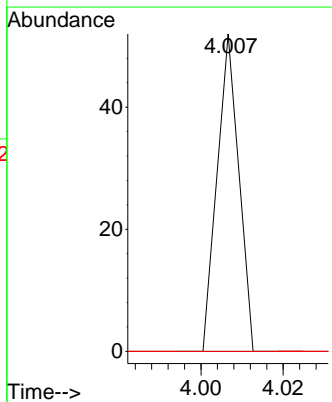
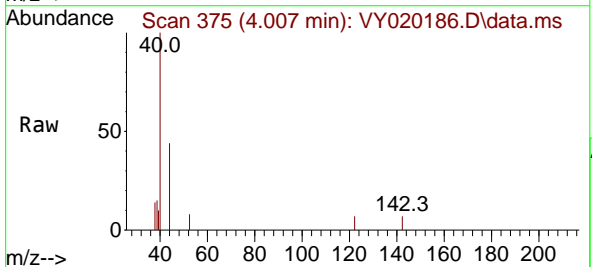


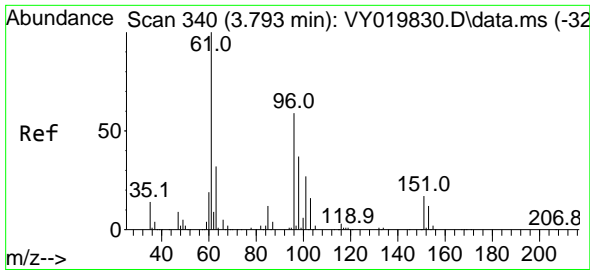
Tgt Ion	Resp	Lower	Upper
101	100		
85	0.0	34.5	51.7#
151	0.0	61.7	92.5#



#10
 Methyl Iodide
 Concen: 1.078 ug/l
 RT: 4.007 min Scan# 375
 Delta R.T. 0.000 min
 Lab File: VY020186.D
 Acq: 06 Nov 2024 17:03

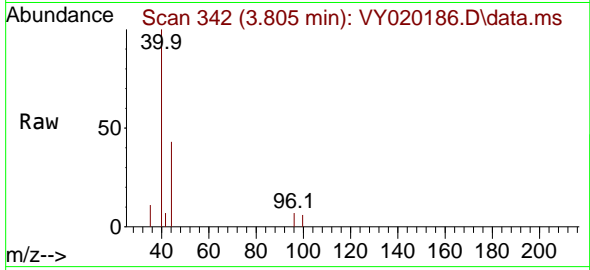
Tgt Ion	Resp	Lower	Upper
142	100		
127	0.0	32.8	49.2#
141	0.0	11.4	17.2#



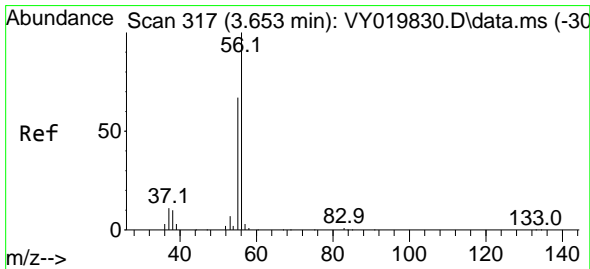
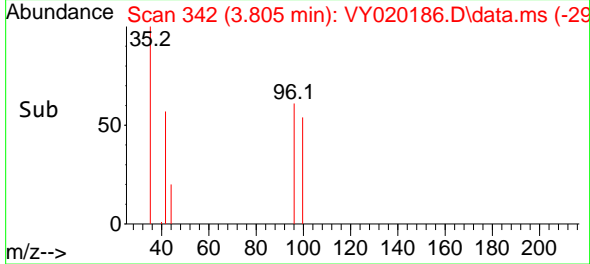
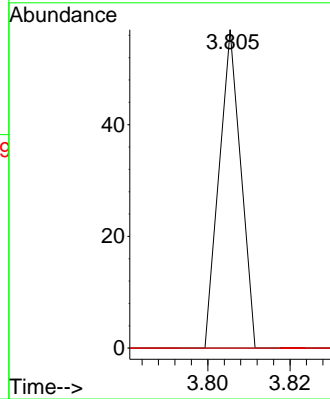


#12
 1,1-Dichloroethene
 Concen: 1.202 ug/l
 RT: 3.805 min Scan# 34
 Delta R.T. 0.019 min
 Lab File: VY020186.D
 Acq: 06 Nov 2024 17:03

Instrument :
 MSVOA_Y
 ClientSampleId :

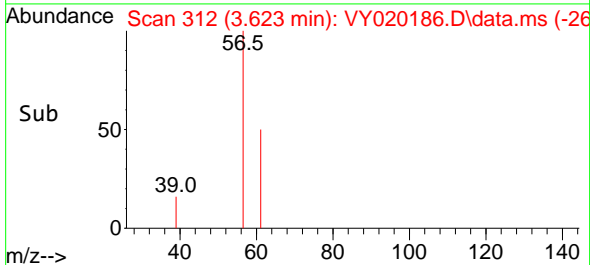
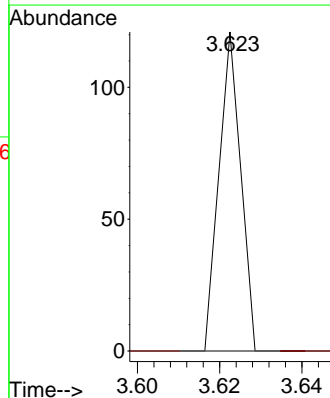
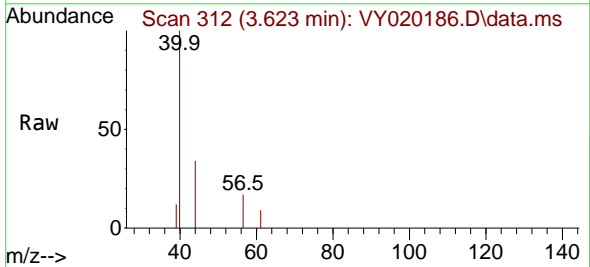


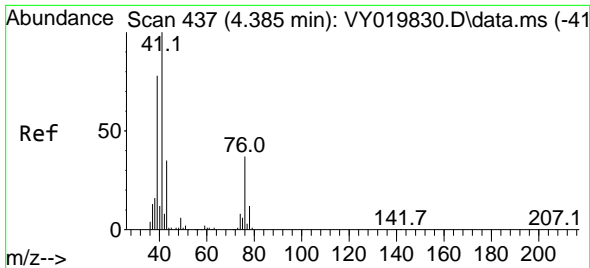
Tgt Ion: 96 Resp: 21
 Ion Ratio Lower Upper
 96 100
 61 0.0 114.6 171.8#
 98 0.0 50.8 76.2#



#13
 Acrolein
 Concen: 24.319 ug/l
 RT: 3.623 min Scan# 312
 Delta R.T. -0.030 min
 Lab File: VY020186.D
 Acq: 06 Nov 2024 17:03

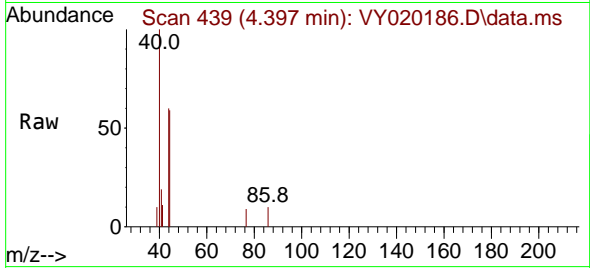
Tgt Ion: 56 Resp: 44
 Ion Ratio Lower Upper
 56 100
 55 0.0 55.7 83.5#





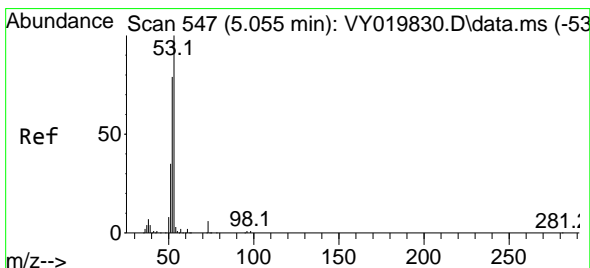
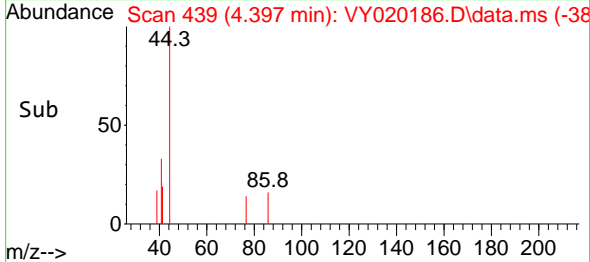
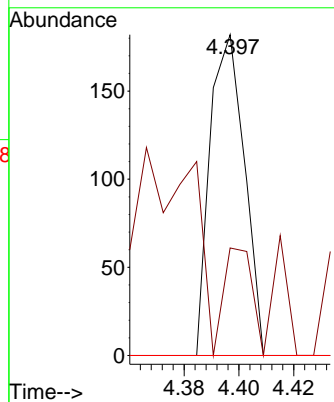
#14
 Allyl chloride
 Concen: 5.013 ug/l
 RT: 4.397 min Scan# 41
 Delta R.T. 0.012 min
 Lab File: VY020186.D
 Acq: 06 Nov 2024 17:03

Instrument :
 MSVOA_Y
 ClientSampleId :

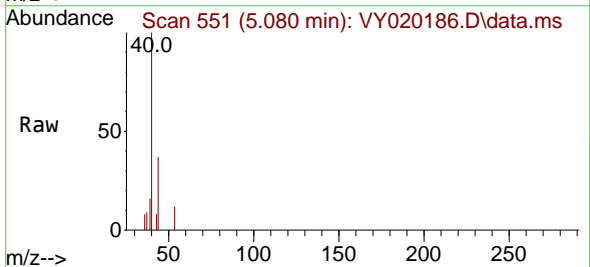


Tgt Ion: 41 Resp: 158

Ion	Ratio	Lower	Upper
41	100		
39	0.0	58.3	87.5#
76	0.0	39.0	58.6#

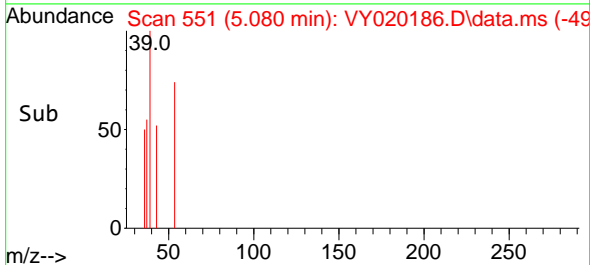
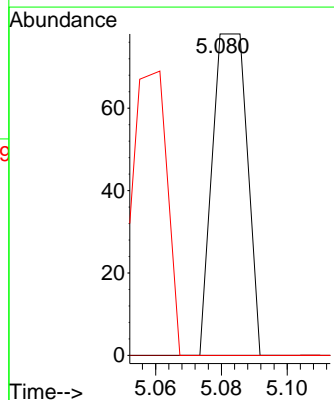


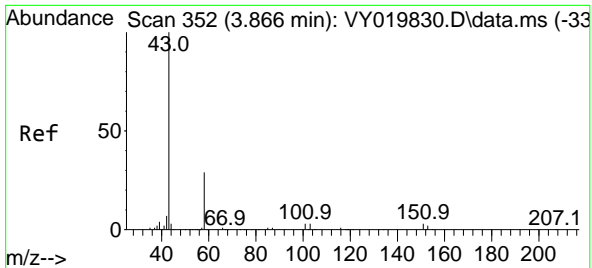
#15
 Acrylonitrile
 Concen: 13.791 ug/l
 RT: 5.080 min Scan# 551
 Delta R.T. 0.025 min
 Lab File: VY020186.D
 Acq: 06 Nov 2024 17:03



Tgt Ion: 53 Resp: 57

Ion	Ratio	Lower	Upper
53	100		
52	0.0	64.7	97.1#
51	87.7	28.4	42.6#

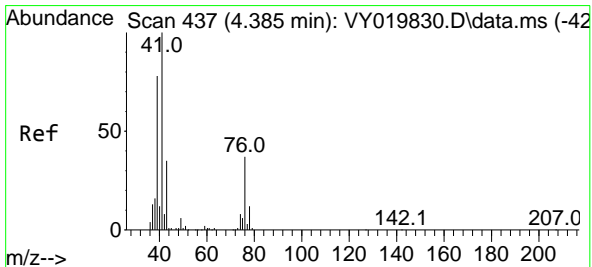
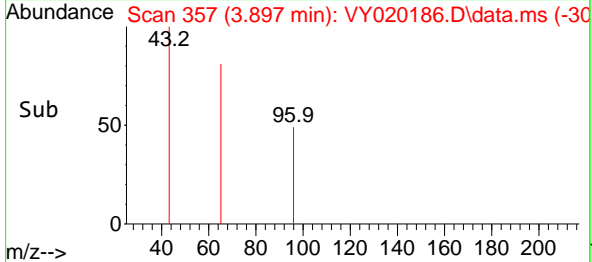
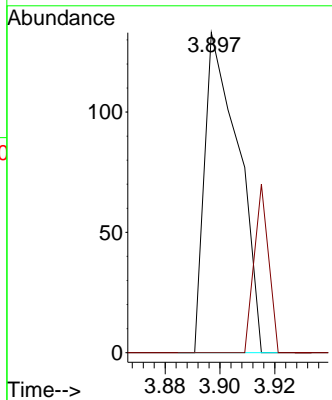
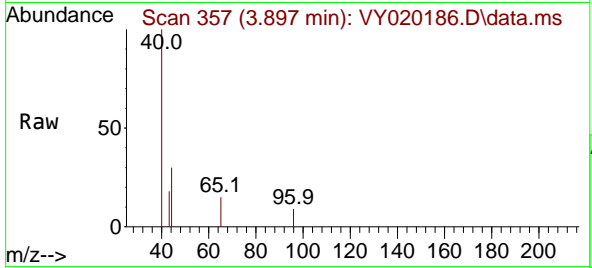




#16
 Acetone
 Concen: 24.260 ug/l
 RT: 3.897 min Scan# 311
 Delta R.T. 0.025 min
 Lab File: VY020186.D
 Acq: 06 Nov 2024 17:03

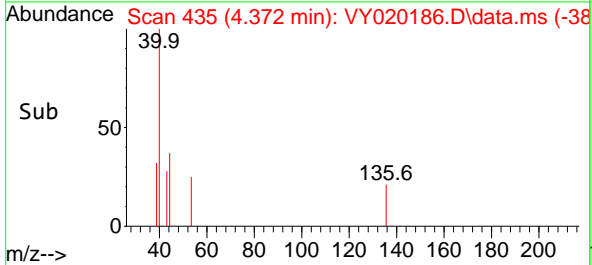
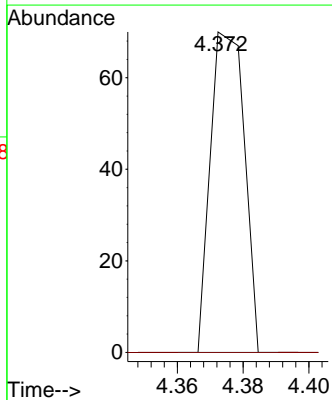
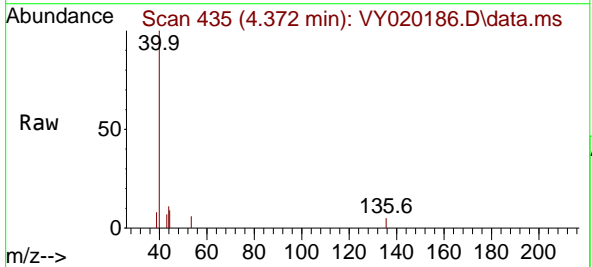
Instrument :
 MSVOA_Y
 ClientSampleId :

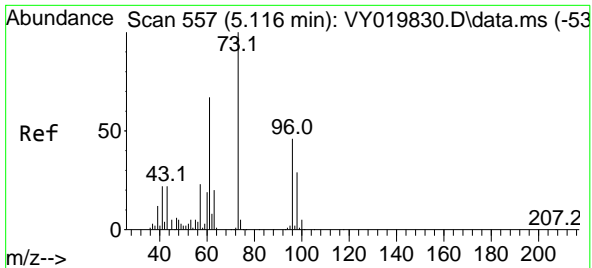
Tgt Ion: 43 Resp: 114
 Ion Ratio Lower Upper
 43 100
 58 0.0 31.7 47.5#



#18
 Methyl Acetate
 Concen: 4.535 ug/l
 RT: 4.372 min Scan# 435
 Delta R.T. -0.012 min
 Lab File: VY020186.D
 Acq: 06 Nov 2024 17:03

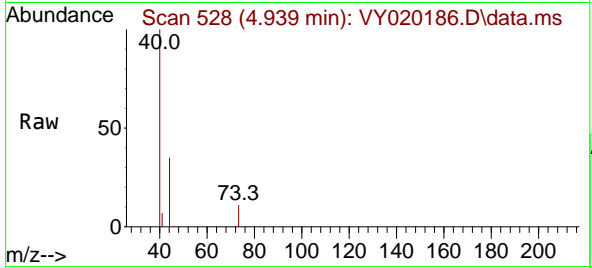
Tgt Ion: 43 Resp: 50
 Ion Ratio Lower Upper
 43 100
 74 0.0 23.3 34.9#



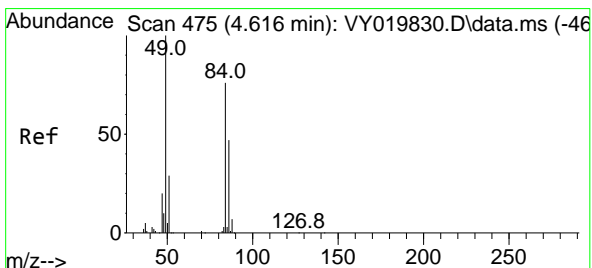
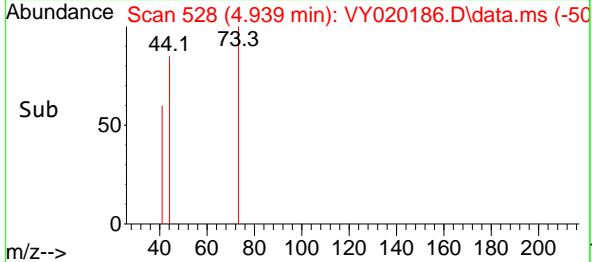
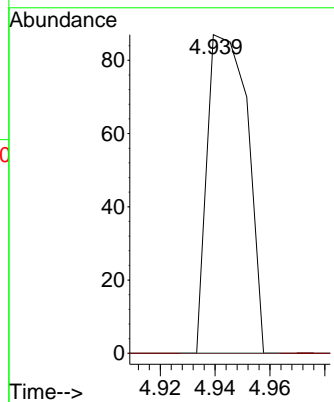


#19
 Methyl tert-butyl Ether
 Concen: 2.002 ug/l
 RT: 4.939 min Scan# 51
 Delta R.T. -0.177 min
 Lab File: VY020186.D
 Acq: 06 Nov 2024 17:03

Instrument :
 MSVOA_Y
 ClientSampleId :

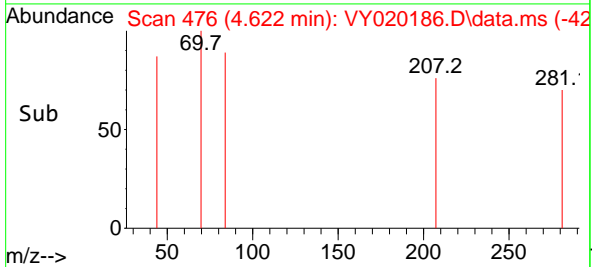
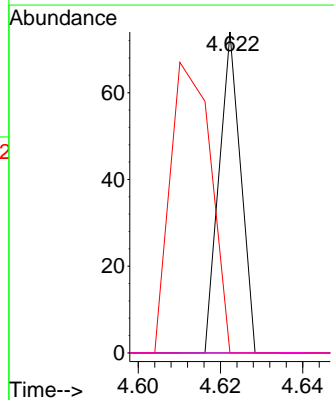
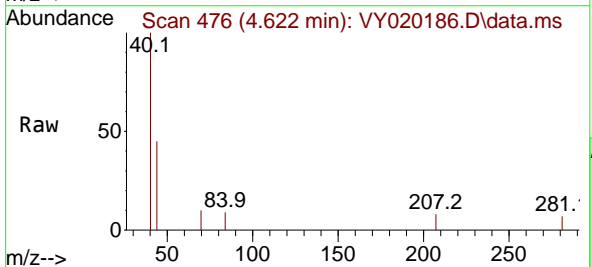


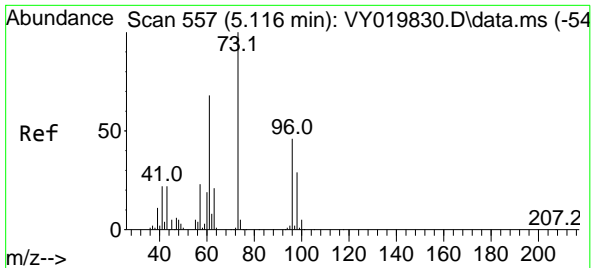
Tgt Ion: 73 Resp: 88
 Ion Ratio Lower Upper
 73 100
 57 0.0 17.3 25.9#



#20
 Methylene Chloride
 Concen: 1.279 ug/l
 RT: 4.622 min Scan# 476
 Delta R.T. 0.006 min
 Lab File: VY020186.D
 Acq: 06 Nov 2024 17:03

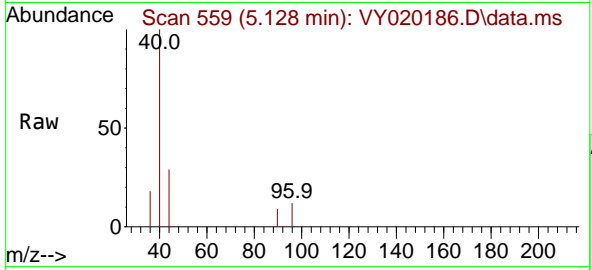
Tgt Ion: 84 Resp: 27
 Ion Ratio Lower Upper
 84 100
 49 0.0 84.4 126.6#
 51 0.0 26.0 39.0#
 86 0.0 49.5 74.3#





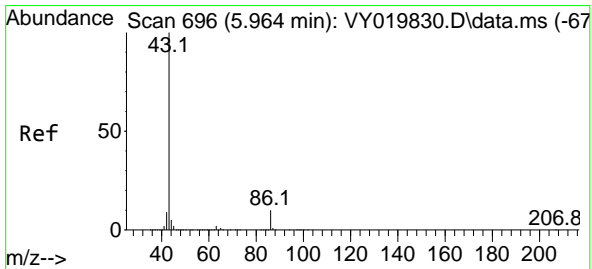
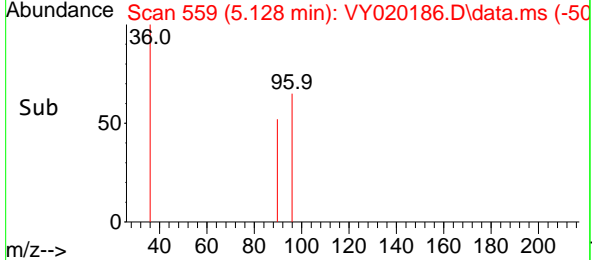
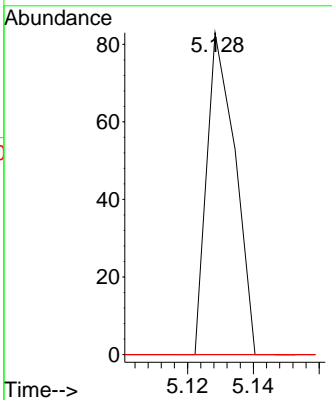
#21
 trans-1,2-Dichloroethene
 Concen: 2.538 ug/l
 RT: 5.128 min Scan# 511
 Delta R.T. 0.019 min
 Lab File: VY020186.D
 Acq: 06 Nov 2024 17:03

Instrument : MSVOA_Y
 ClientSampled :



Tgt Ion: 96 Resp: 50

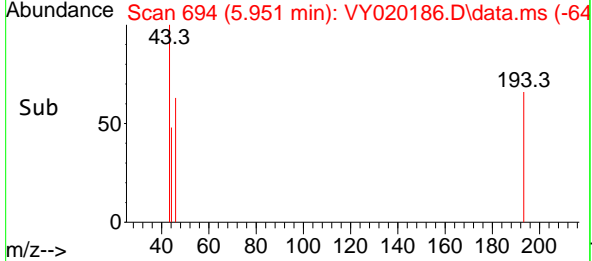
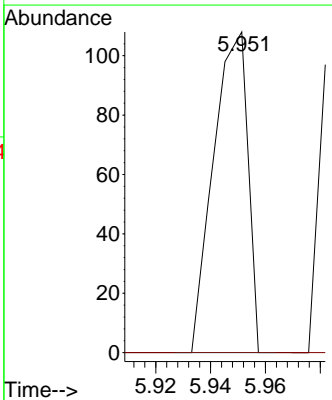
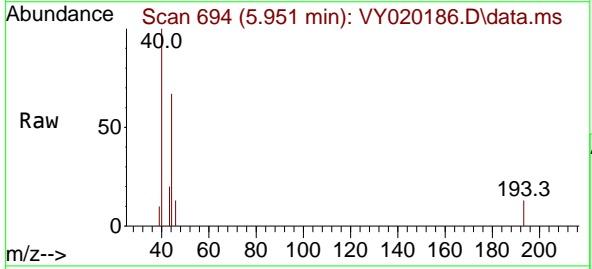
Ion	Ratio	Lower	Upper
96	100		
61	0.0	97.5	146.3#
98	0.0	50.5	75.7#

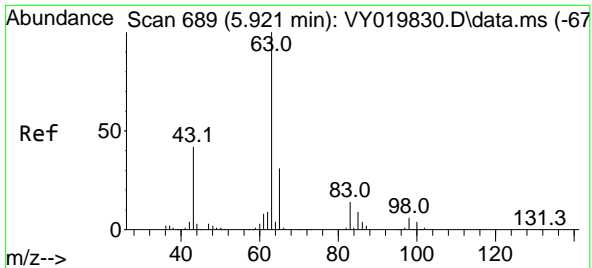


#23
 Vinyl Acetate
 Concen: 2.554 ug/l
 RT: 5.951 min Scan# 694
 Delta R.T. -0.006 min
 Lab File: VY020186.D
 Acq: 06 Nov 2024 17:03

Tgt Ion: 43 Resp: 94

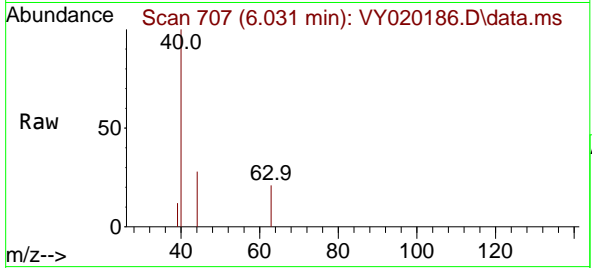
Ion	Ratio	Lower	Upper
43	100		
86	0.0	10.6	16.0#



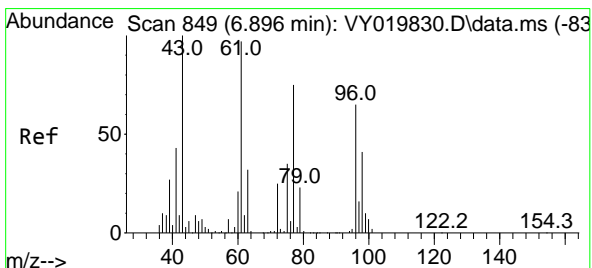
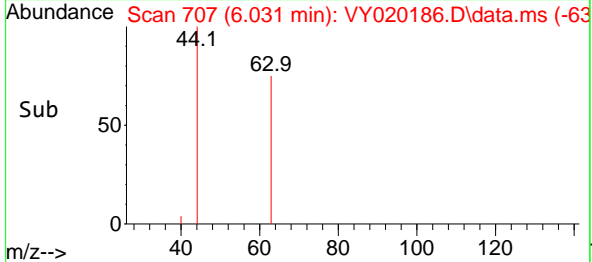
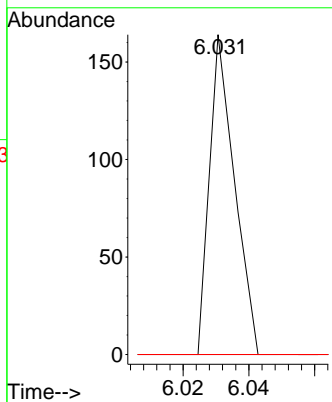


#24
 1,1-Dichloroethane
 Concen: 2.297 ug/l
 RT: 6.031 min Scan# 70
 Delta R.T. 0.116 min
 Lab File: VY020186.D
 Acq: 06 Nov 2024 17:03

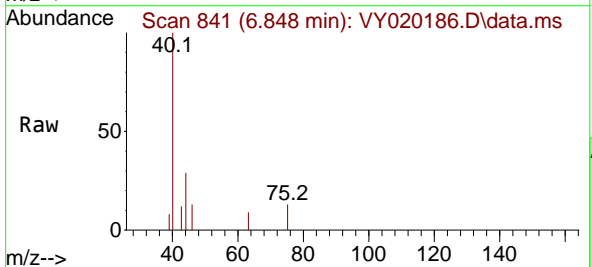
Instrument :
 MSVOA_Y
 ClientSampleId :



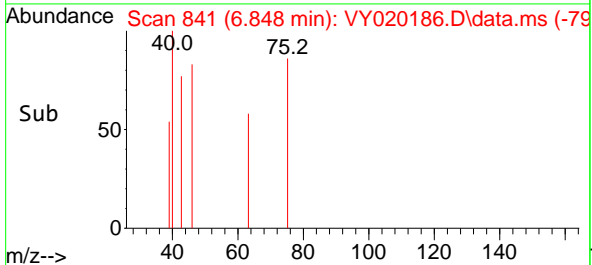
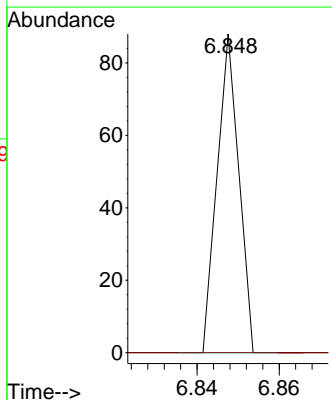
Tgt Ion: 63 Resp: 87
 Ion Ratio Lower Upper
 63 100
 98 0.0 4.0 12.2#
 100 0.0 2.6 8.0#

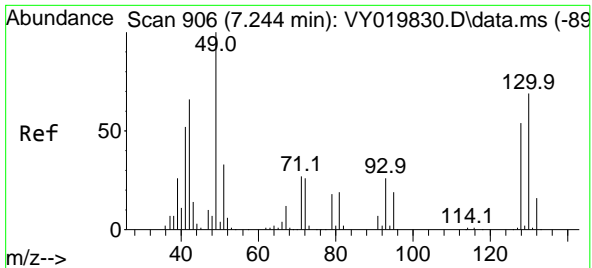


#25
 2-Butanone
 Concen: 5.024 ug/l
 RT: 6.848 min Scan# 841
 Delta R.T. -0.042 min
 Lab File: VY020186.D
 Acq: 06 Nov 2024 17:03



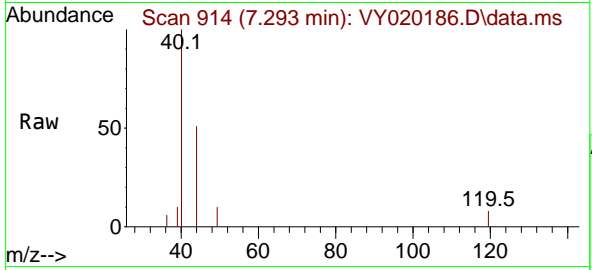
Tgt Ion: 43 Resp: 32
 Ion Ratio Lower Upper
 43 100
 72 0.0 27.3 40.9#



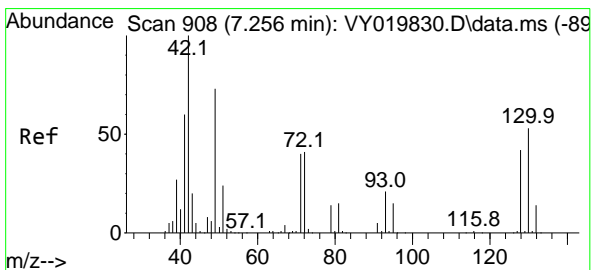
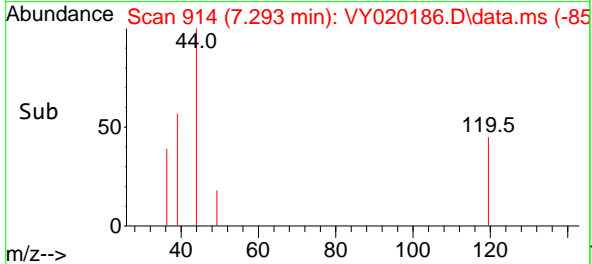
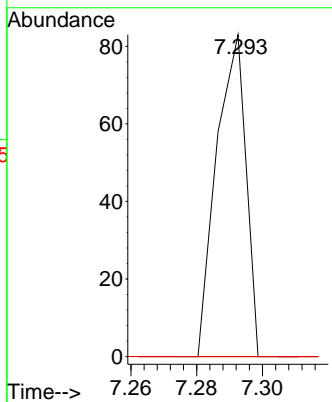


#28
 Bromochloromethane
 Concen: 2.932 ug/l
 RT: 7.293 min Scan# 914
 Delta R.T. 0.049 min
 Lab File: VY020186.D
 Acq: 06 Nov 2024 17:03

Instrument :
 MSVOA_Y
 ClientSampleId :

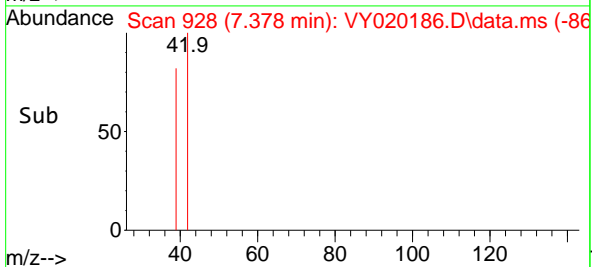
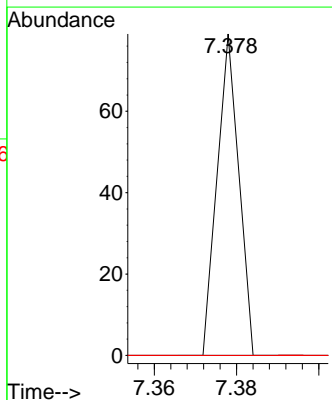
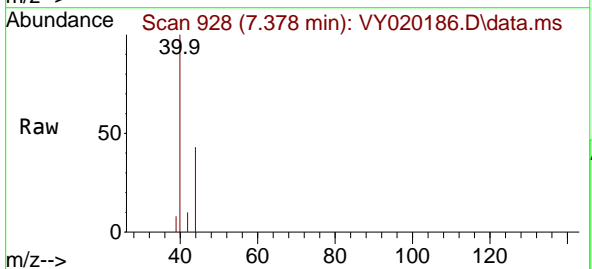


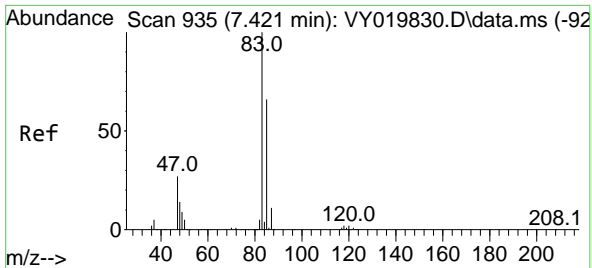
Tgt Ion: 49 Resp: 52
 Ion Ratio Lower Upper
 49 100
 129 0.0 0.0 4.6
 130 0.0 72.7 109.1#



#29
 Tetrahydrofuran
 Concen: 7.889 ug/l
 RT: 7.378 min Scan# 928
 Delta R.T. 0.116 min
 Lab File: VY020186.D
 Acq: 06 Nov 2024 17:03

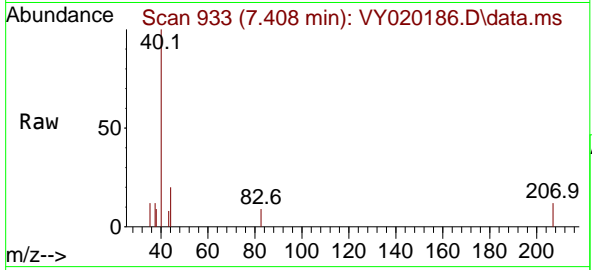
Tgt Ion: 42 Resp: 29
 Ion Ratio Lower Upper
 42 100
 72 0.0 43.0 64.4#
 71 0.0 40.8 61.2#



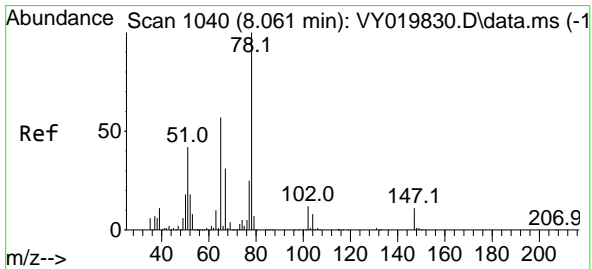
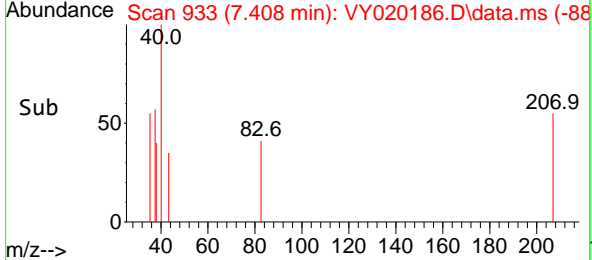
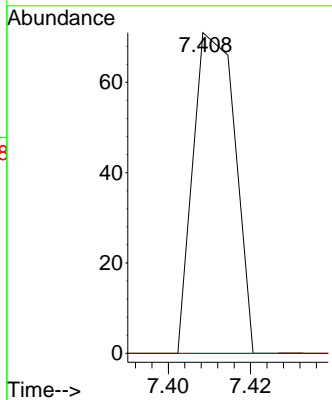


#30
 Chloroform
 Concen: 1.330 ug/l
 RT: 7.408 min Scan# 91
 Delta R.T. -0.012 min
 Lab File: VY020186.D
 Acq: 06 Nov 2024 17:03

Instrument :
 MSVOA_Y
 ClientSampleId :

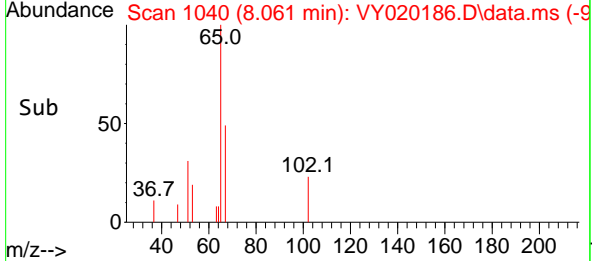
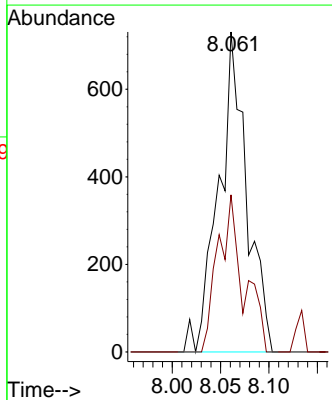
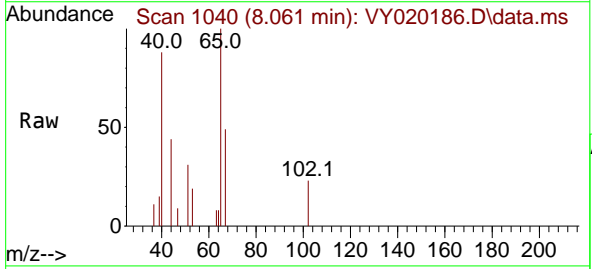


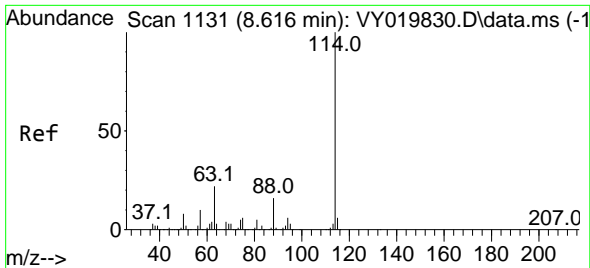
Tgt Ion: 83 Resp: 50
 Ion Ratio Lower Upper
 83 100
 85 0.0 52.2 78.4#



#33
 1,2-Dichloroethane-d4
 Concen: 72.948 ug/l
 RT: 8.061 min Scan# 1040
 Delta R.T. 0.000 min
 Lab File: VY020186.D
 Acq: 06 Nov 2024 17:03

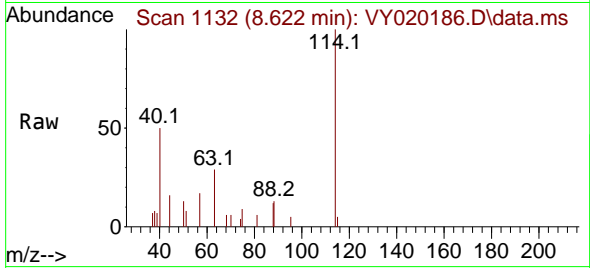
Tgt Ion: 65 Resp: 1474
 Ion Ratio Lower Upper
 65 100
 67 45.0 0.0 109.6



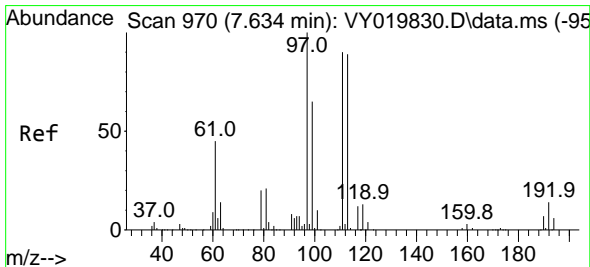
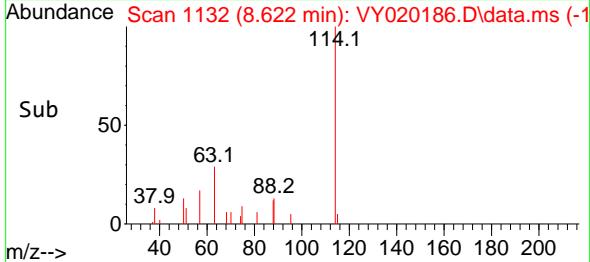
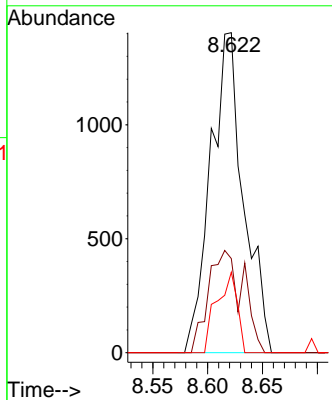


#34
 1,4-Difluorobenzene
 Concen: 50.000 ug/l
 RT: 8.622 min Scan# 1131
 Delta R.T. 0.006 min
 Lab File: VY020186.D
 Acq: 06 Nov 2024 17:03

Instrument : MSVOA_Y
 ClientSampleId :

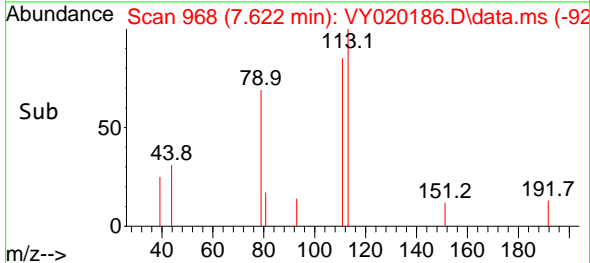
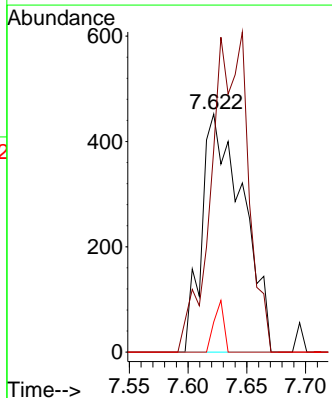
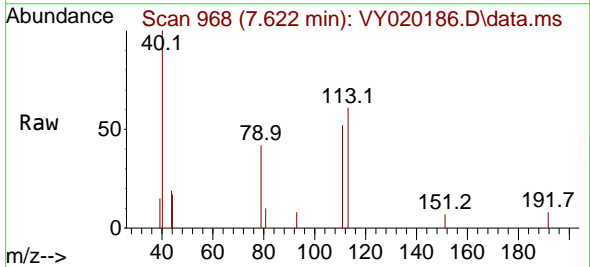


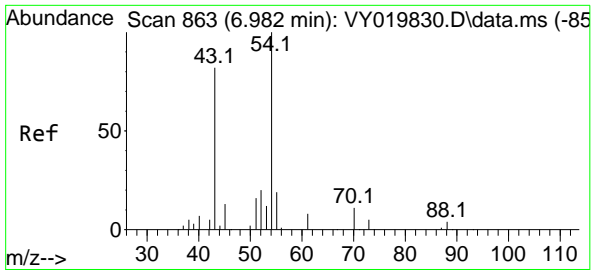
Tgt Ion:114 Resp: 2941
 Ion Ratio Lower Upper
 114 100
 63 29.4 0.0 35.0
 88 25.1 0.0 27.2



#35
 Dibromofluoromethane
 Concen: 58.881 ug/l
 RT: 7.622 min Scan# 968
 Delta R.T. -0.012 min
 Lab File: VY020186.D
 Acq: 06 Nov 2024 17:03

Tgt Ion:113 Resp: 1101
 Ion Ratio Lower Upper
 113 100
 111 0.0 82.2 123.4#
 192 5.2 15.9 23.9#

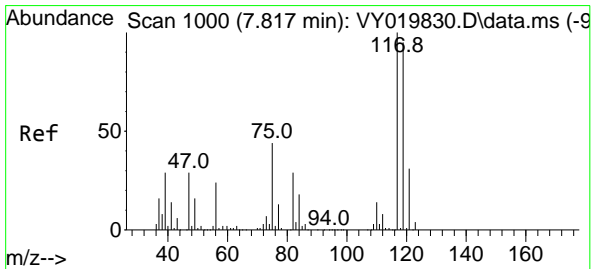
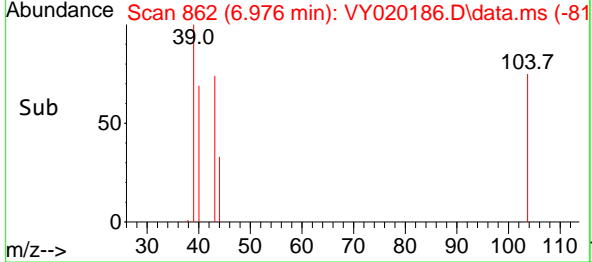
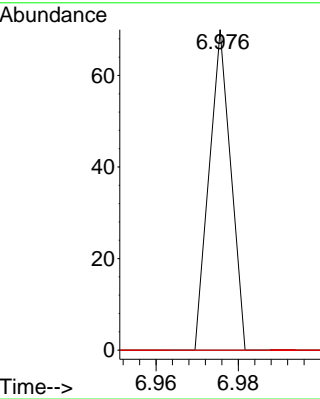
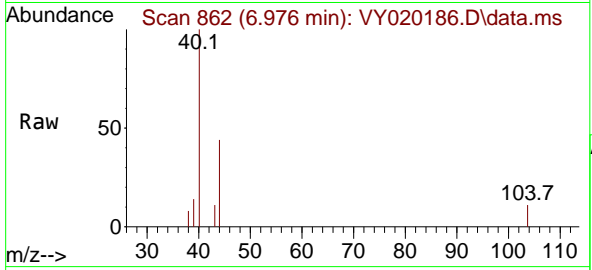




#37
 Ethyl Acetate
 Concen: 1.888 ug/l
 RT: 6.976 min Scan# 801
 Delta R.T. -0.006 min
 Lab File: VY020186.D
 Acq: 06 Nov 2024 17:03

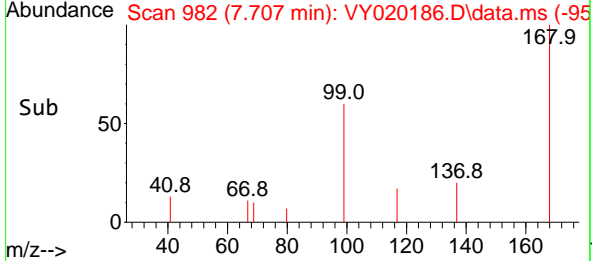
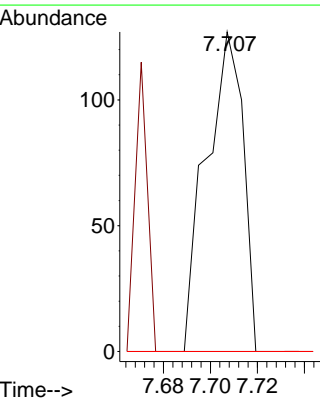
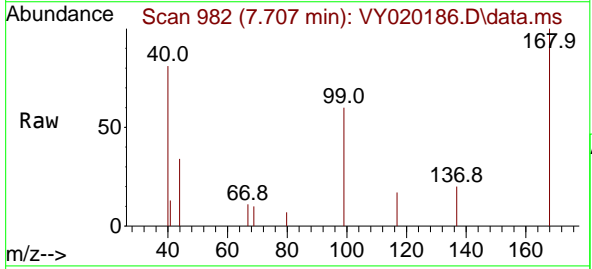
Instrument : MSVOA_Y
 ClientSampleId :

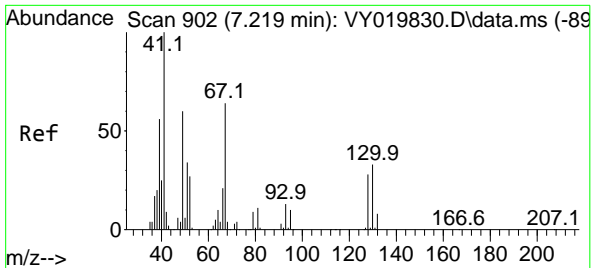
Tgt Ion	Resp	Lower	Upper
43	100		
61	0.0	12.6	19.0#
70	0.0	7.8	11.8#



#38
 Carbon Tetrachloride
 Concen: 4.785 ug/l
 RT: 7.707 min Scan# 982
 Delta R.T. -0.110 min
 Lab File: VY020186.D
 Acq: 06 Nov 2024 17:03

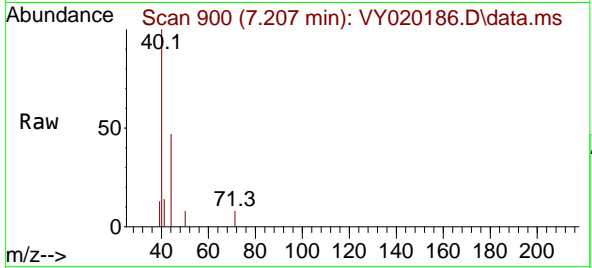
Tgt Ion	Resp	Lower	Upper
117	100		
119	0.0	75.8	113.6#
121	0.0	24.0	36.0#



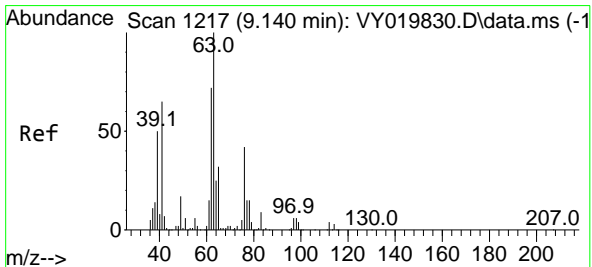
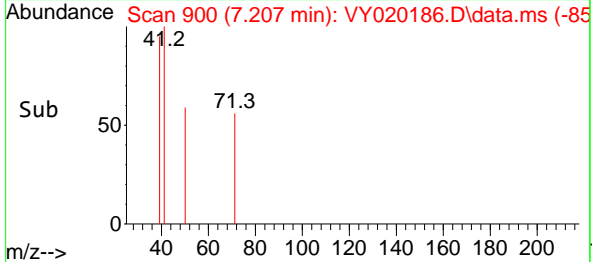
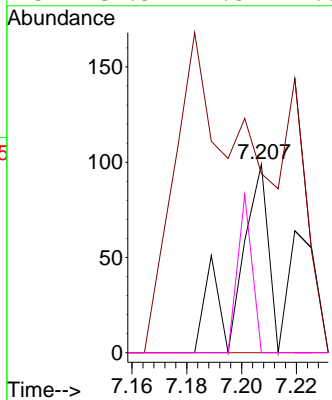


#41
 Methacrylonitrile
 Concen: 11.017 ug/l
 RT: 7.207 min Scan# 902
 Delta R.T. -0.012 min
 Lab File: VY020186.D
 Acq: 06 Nov 2024 17:03

Instrument : MSVOA_Y
 ClientSampleId :

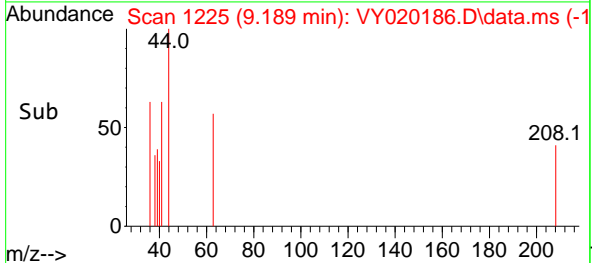
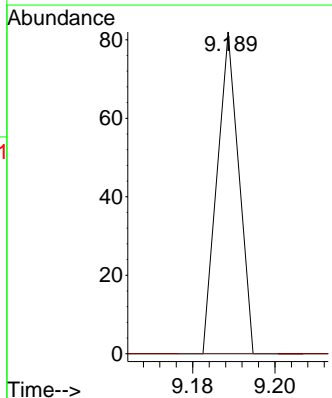
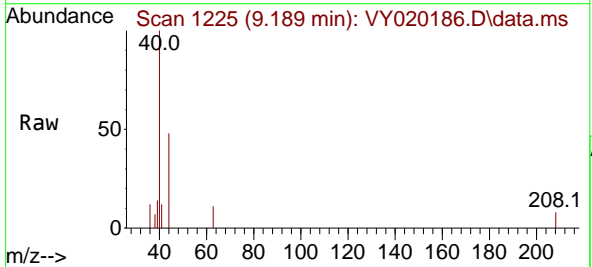


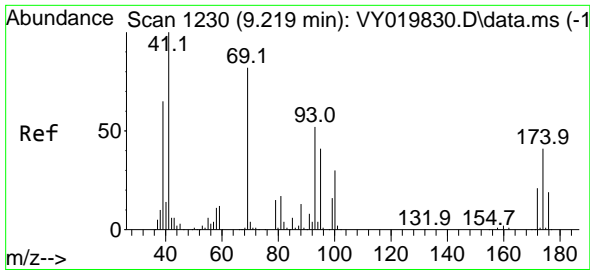
Tgt Ion	Resp	Lower	Upper
41	100		
39	0.0	48.0	72.0#
67	0.0	75.1	112.7#
52	39.5	29.8	44.6



#45
 1,2-Dichloropropane
 Concen: 1.487 ug/l
 RT: 9.189 min Scan# 1225
 Delta R.T. 0.049 min
 Lab File: VY020186.D
 Acq: 06 Nov 2024 17:03

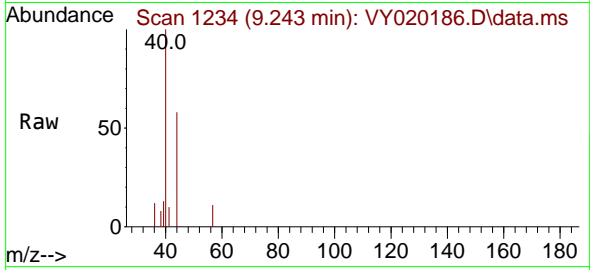
Tgt Ion	Resp	Lower	Upper
63	100		
65	0.0	25.4	38.2#



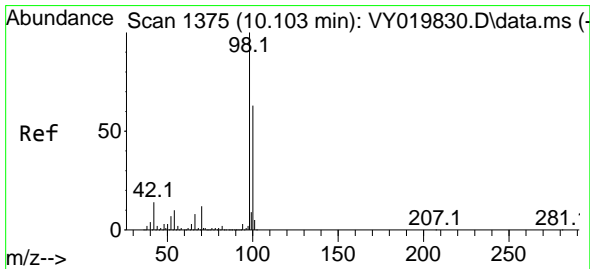
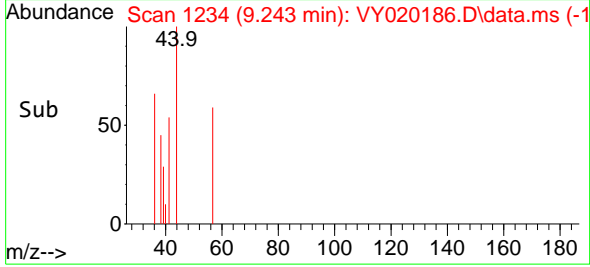
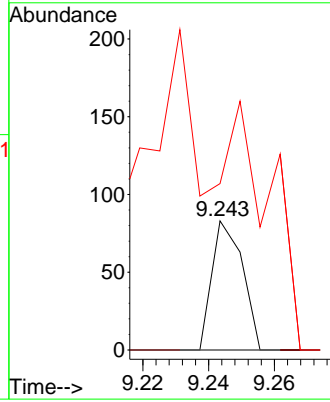


#48
 Methyl methacrylate
 Concen: 4.321 ug/l
 RT: 9.243 min Scan# 11
 Delta R.T. 0.025 min
 Lab File: VY020186.D
 Acq: 06 Nov 2024 17:03

Instrument :
 MSVOA_Y
 ClientSampled :

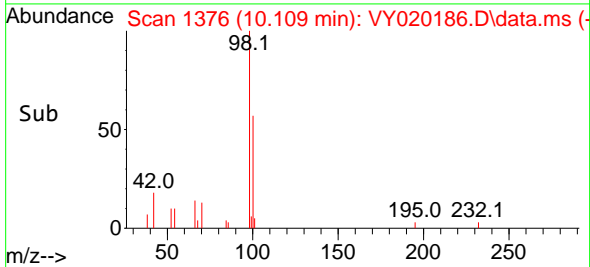
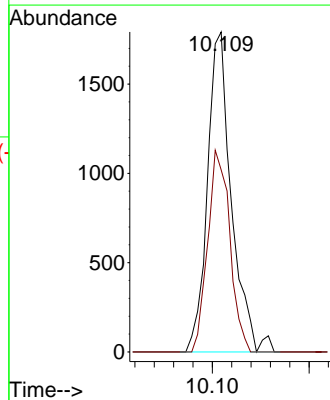
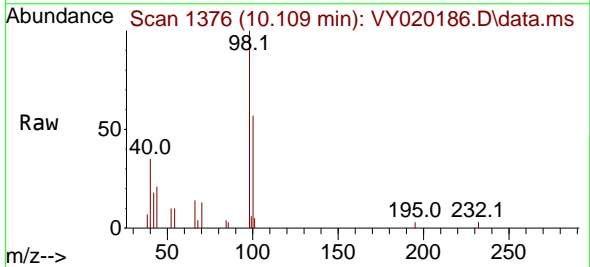


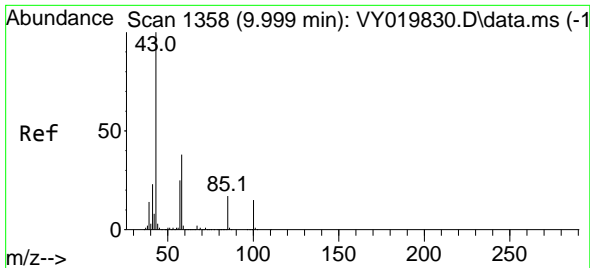
Tgt Ion	Resp	Lower	Upper
41	100		
69	0.0	84.1	126.1#
39	594.3	43.6	65.4#



#50
 Toluene-d8
 Concen: 41.489 ug/l
 RT: 10.109 min Scan# 1376
 Delta R.T. 0.000 min
 Lab File: VY020186.D
 Acq: 06 Nov 2024 17:03

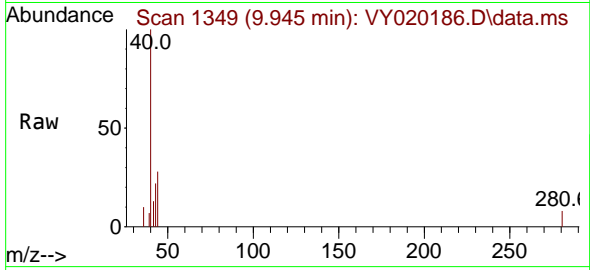
Tgt Ion	Resp	Lower	Upper
98	100		
100	58.0	52.0	78.0



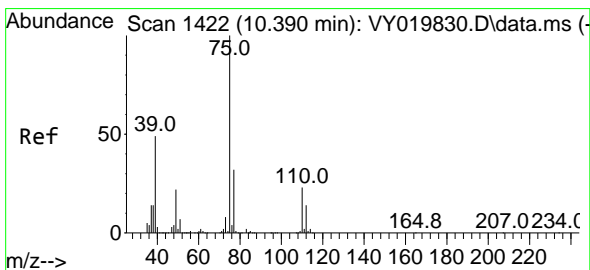
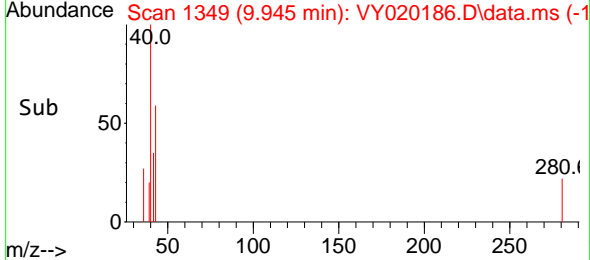
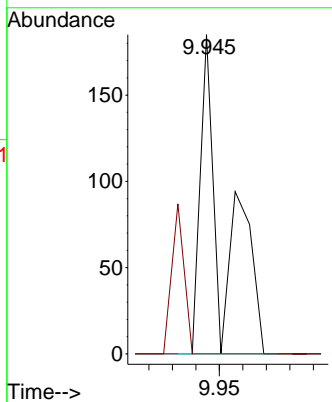


#51
 4-Methyl-2-Pentanone
 Concen: 9.454 ug/l
 RT: 9.945 min Scan# 11
 Delta R.T. -0.055 min
 Lab File: VY020186.D
 Acq: 06 Nov 2024 17:03

Instrument :
 MSVOA_Y
 ClientSampleId :

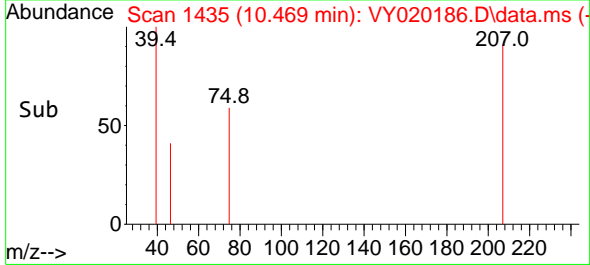
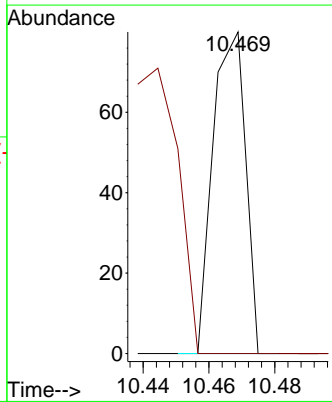
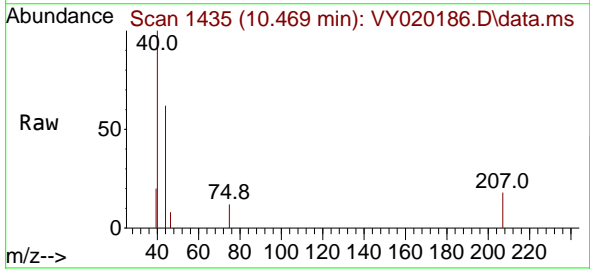


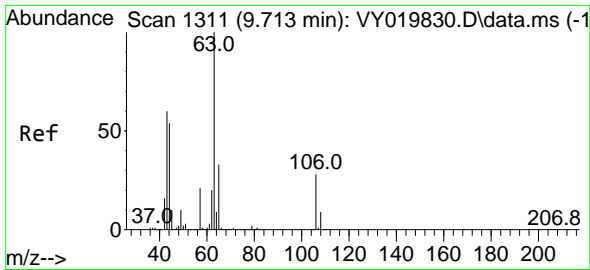
Tgt Ion: 43 Resp: 129
 Ion Ratio Lower Upper
 43 100
 58 24.8 35.7 53.5#



#53
 t-1,3-Dichloropropene
 Concen: 2.175 ug/l
 RT: 10.469 min Scan# 1435
 Delta R.T. 0.073 min
 Lab File: VY020186.D
 Acq: 06 Nov 2024 17:03

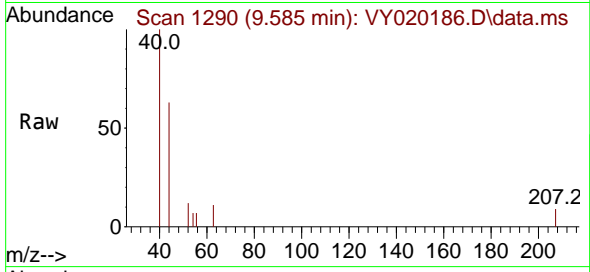
Tgt Ion: 75 Resp: 55
 Ion Ratio Lower Upper
 75 100
 77 0.0 24.1 36.1#



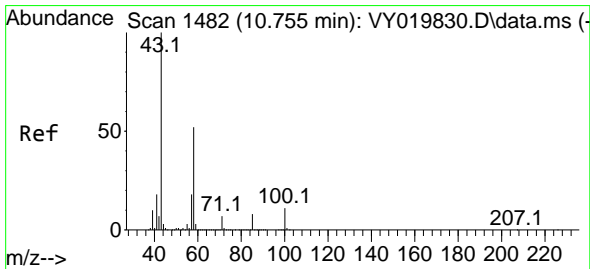
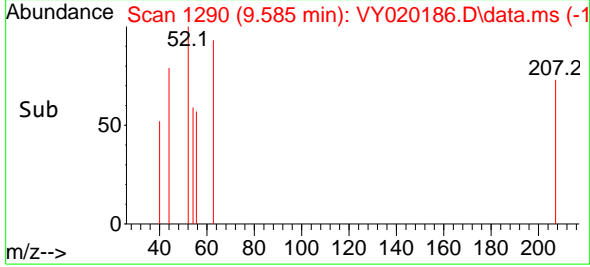
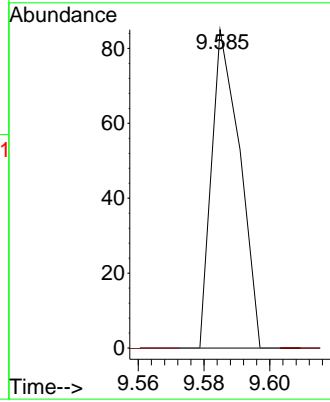


#58
 2-Chloroethyl Vinyl ether
 Concen: 5.201 ug/l
 RT: 9.585 min Scan# 11
 Delta R.T. -0.128 min
 Lab File: VY020186.D
 Acq: 06 Nov 2024 17:03

Instrument :
 MSVOA_Y
 ClientSampleId :

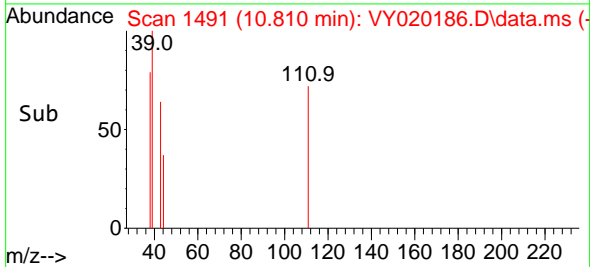
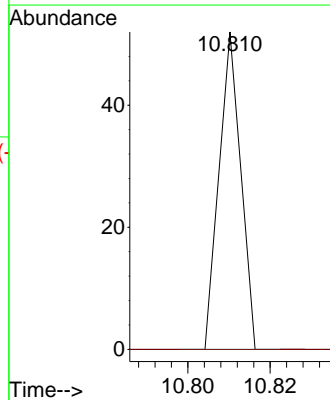
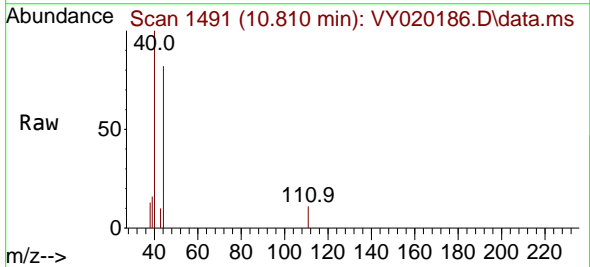


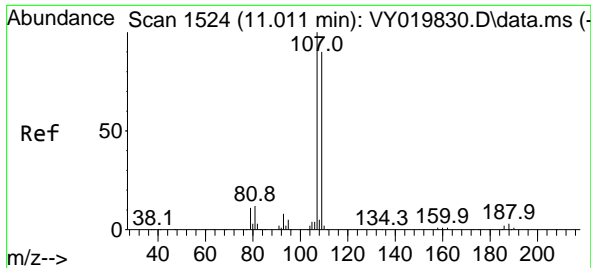
Tgt Ion: 63 Resp: 50
 Ion Ratio Lower Upper
 63 100
 106 0.0 23.7 35.5#



#59
 2-Hexanone
 Concen: 1.942 ug/l
 RT: 10.810 min Scan# 1491
 Delta R.T. 0.049 min
 Lab File: VY020186.D
 Acq: 06 Nov 2024 17:03

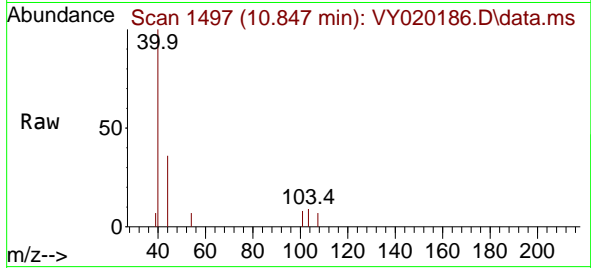
Tgt Ion: 43 Resp: 19
 Ion Ratio Lower Upper
 43 100
 58 0.0 31.4 94.0#



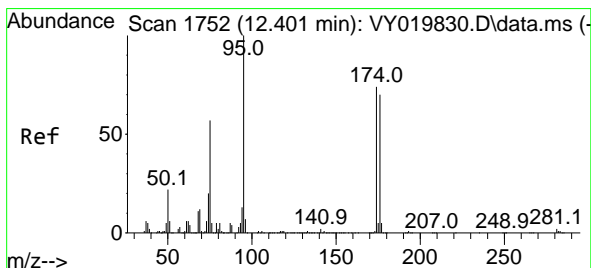
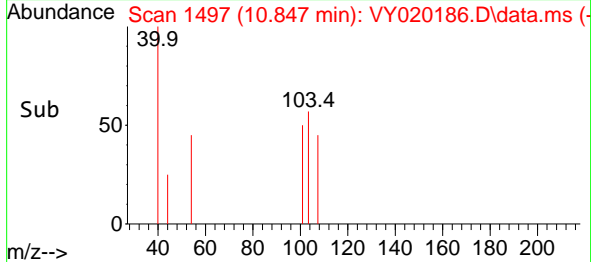
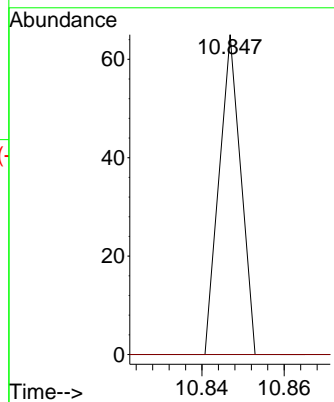


#61
 1,2-Dibromoethane
 Concen: 1.901 ug/l
 RT: 10.847 min Scan# 14
 Delta R.T. -0.170 min
 Lab File: VY020186.D
 Acq: 06 Nov 2024 17:03

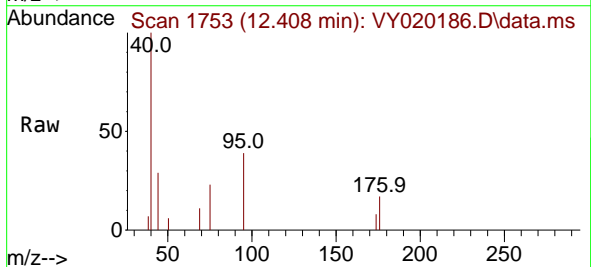
Instrument :
 MSVOA_Y
 ClientSampleId :



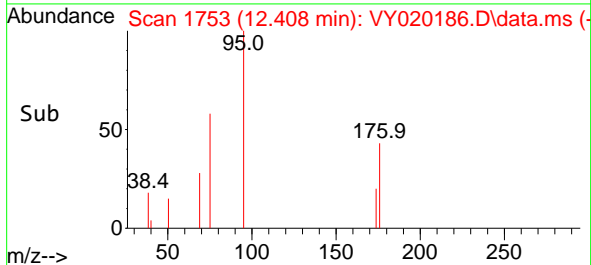
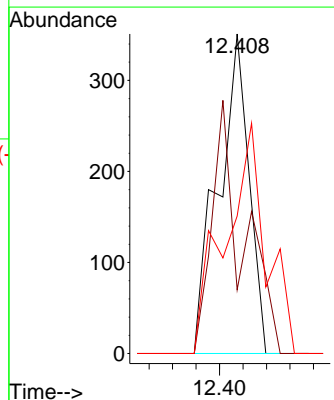
Tgt Ion:107 Resp: 24
 Ion Ratio Lower Upper
 107 100
 109 0.0 75.9 113.9#

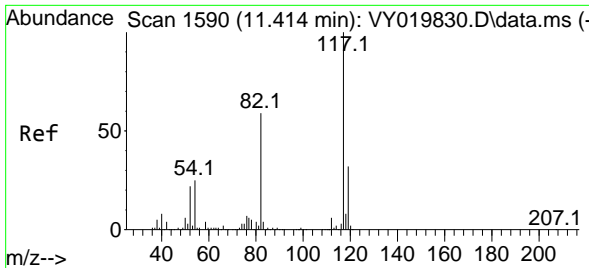


#62
 4-Bromofluorobenzene
 Concen: 13.154 ug/l
 RT: 12.408 min Scan# 1753
 Delta R.T. 0.000 min
 Lab File: VY020186.D
 Acq: 06 Nov 2024 17:03



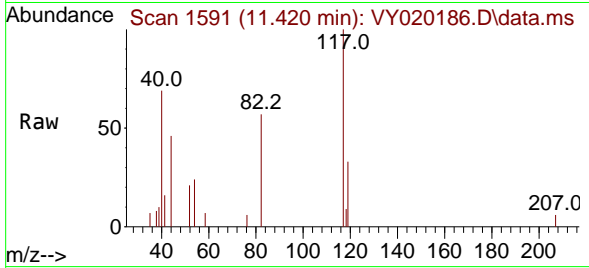
Tgt Ion: 95 Resp: 318
 Ion Ratio Lower Upper
 95 100
 174 80.2 0.0 175.6
 176 95.6 0.0 171.4





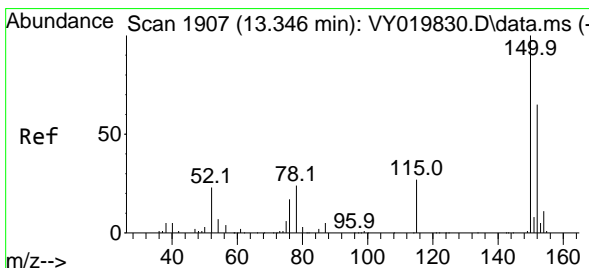
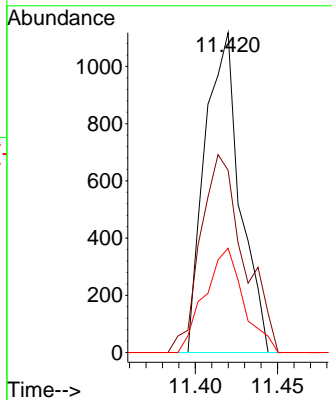
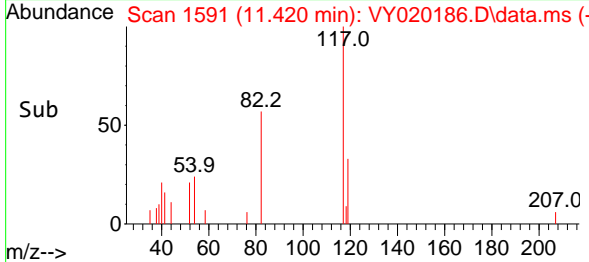
#63
 Chlorobenzene-d5
 Concen: 50.000 ug/l
 RT: 11.420 min Scan# 11
 Delta R.T. 0.000 min
 Lab File: VY020186.D
 Acq: 06 Nov 2024 17:03

Instrument :
 MSVOA_Y
 ClientSampleId :

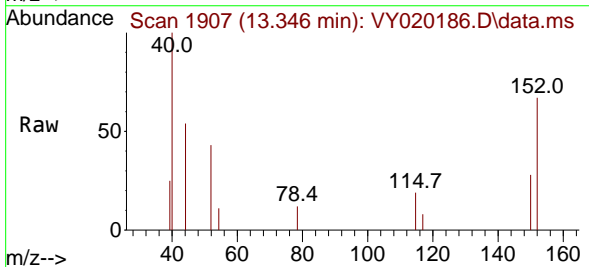


Tgt Ion:117 Resp: 1663

Ion	Ratio	Lower	Upper
117	100		
82	57.0	42.4	63.6
119	32.6	25.9	38.9

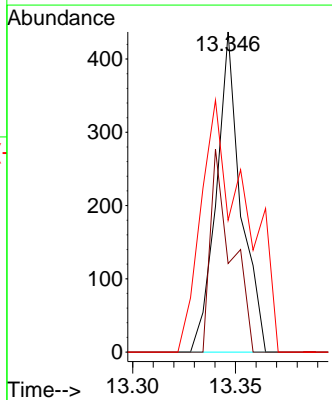
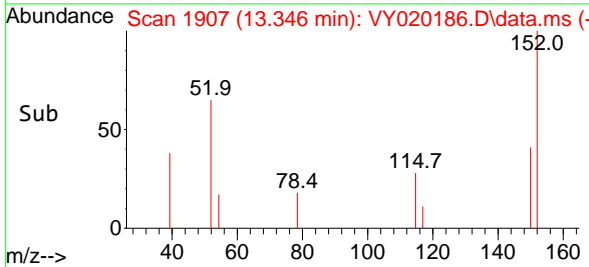


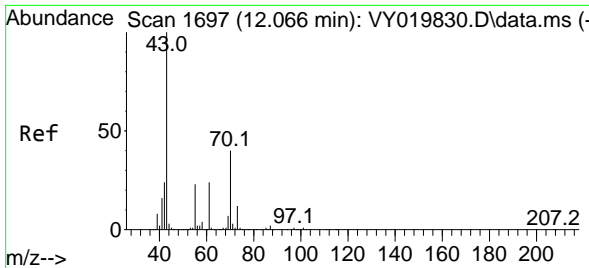
#72
 1,4-Dichlorobenzene-d4
 Concen: 50.000 ug/l
 RT: 13.346 min Scan# 1907
 Delta R.T. 0.000 min
 Lab File: VY020186.D
 Acq: 06 Nov 2024 17:03



Tgt Ion:152 Resp: 363

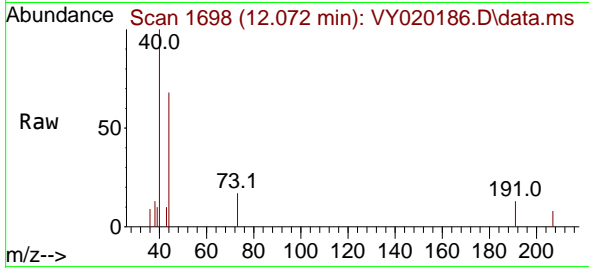
Ion	Ratio	Lower	Upper
152	100		
115	54.3	28.2	84.7
150	141.6	0.0	345.6





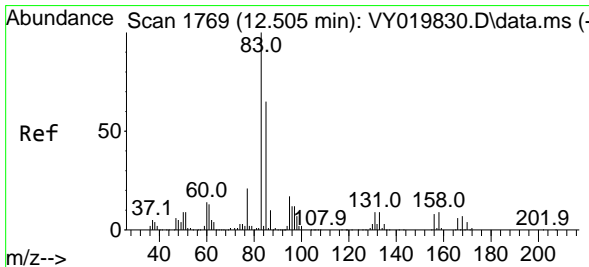
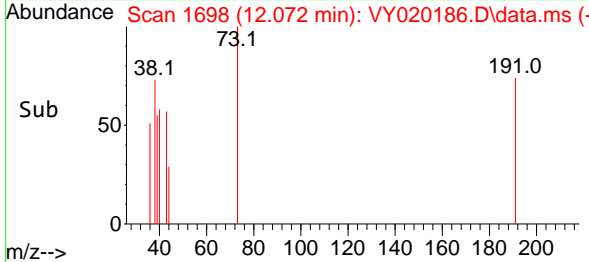
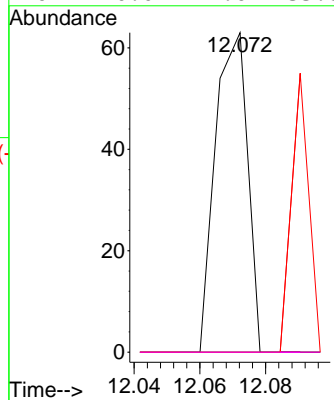
#74
 N-amy1 acetate
 Concen: 5.932 ug/l
 RT: 12.072 min Scan# 1
 Delta R.T. 0.000 min
 Lab File: VY020186.D
 Acq: 06 Nov 2024 17:03

Instrument :
 MSVOA_Y
 ClientSampleId :



Tgt Ion: 43 Resp: 43

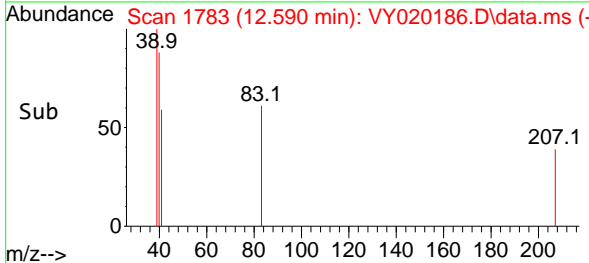
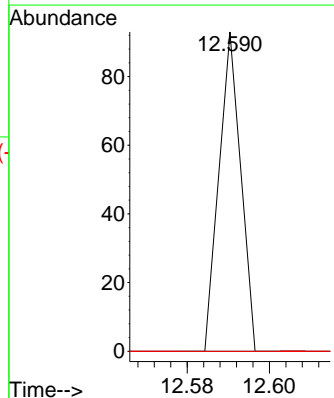
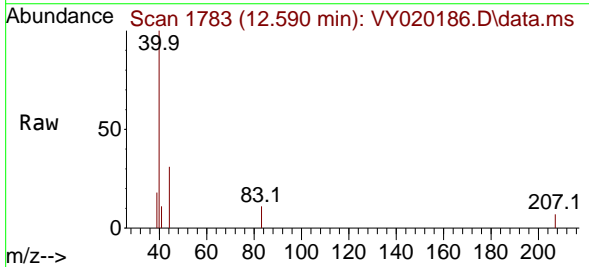
Ion	Ratio	Lower	Upper
43	100		
70	0.0	41.4	62.2#
55	46.5	23.3	34.9#
61	0.0	22.6	33.8#

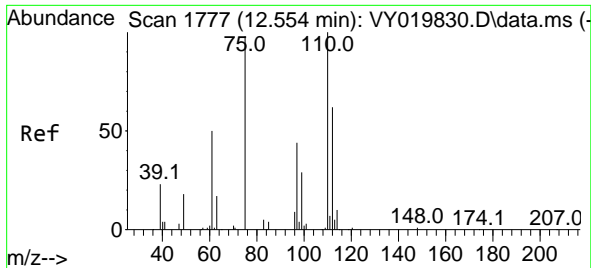


#75
 1,1,2,2-Tetrachloroethane
 Concen: 6.704 ug/l
 RT: 12.590 min Scan# 1783
 Delta R.T. 0.080 min
 Lab File: VY020186.D
 Acq: 06 Nov 2024 17:03

Tgt Ion: 83 Resp: 34

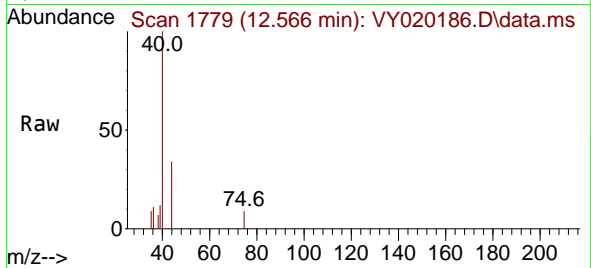
Ion	Ratio	Lower	Upper
83	100		
131	0.0	5.0	14.9#
85	0.0	32.0	96.0#



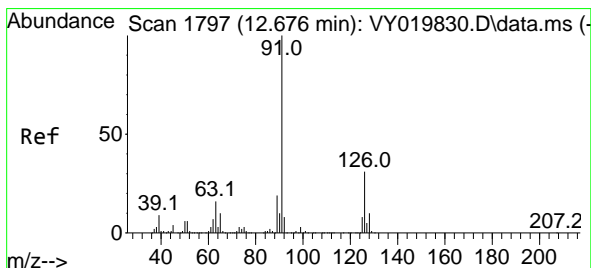
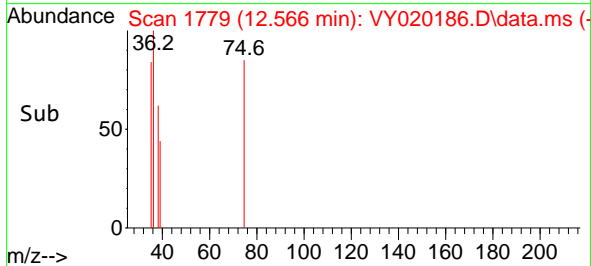
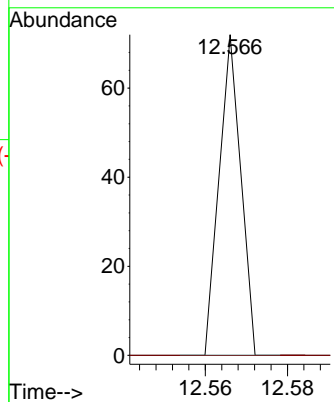


#76
 1,2,3-Trichloropropane
 Concen: 7.641 ug/l
 RT: 12.566 min Scan# 11
 Delta R.T. 0.006 min
 Lab File: VY020186.D
 Acq: 06 Nov 2024 17:03

Instrument :
 MSVOA_Y
 ClientSampleId :

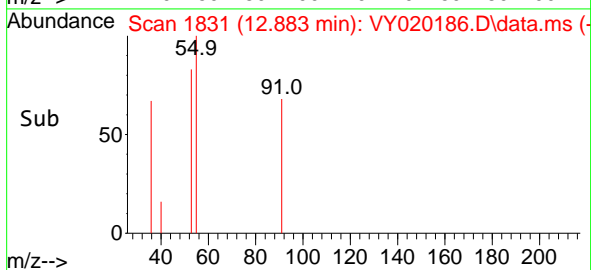
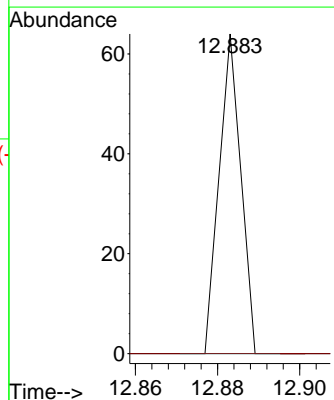
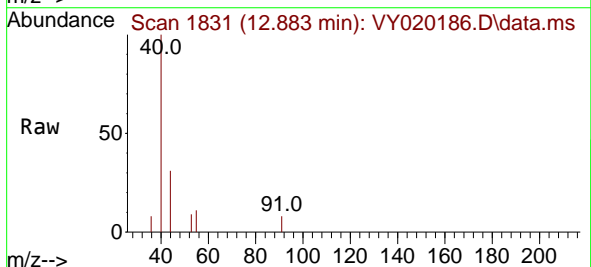


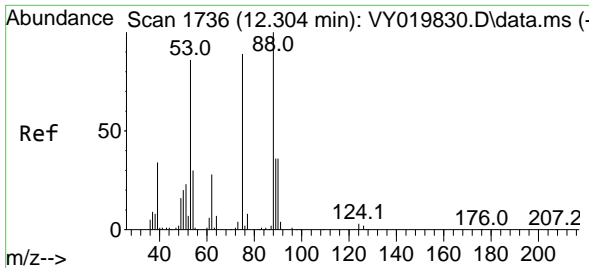
Tgt Ion: 75 Resp: 26
 Ion Ratio Lower Upper
 75 100
 77 0.0 0.0 0.0



#79
 2-Chlorotoluene
 Concen: 1.148 ug/l
 RT: 12.883 min Scan# 1831
 Delta R.T. 0.201 min
 Lab File: VY020186.D
 Acq: 06 Nov 2024 17:03

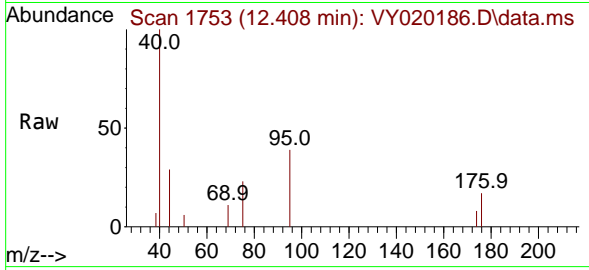
Tgt Ion: 91 Resp: 23
 Ion Ratio Lower Upper
 91 100
 126 0.0 17.8 53.5#



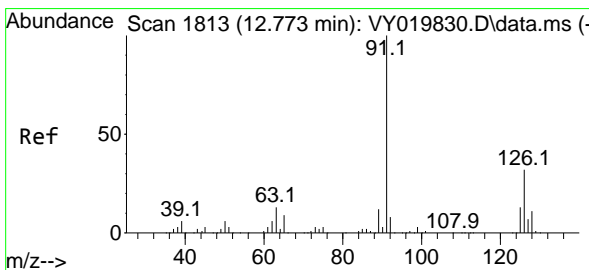
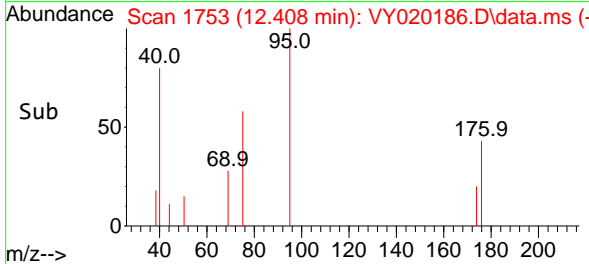
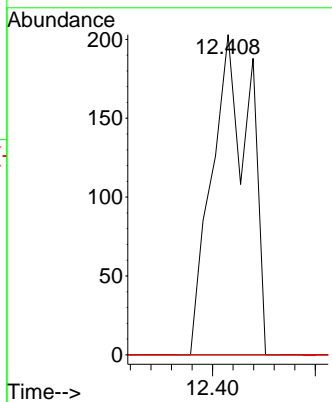


#81
 trans-1,4-Dichloro-2-butene
 Concen: 164.353 ug/l
 RT: 12.408 min Scan# 11
 Delta R.T. 0.104 min
 Lab File: VY020186.D
 Acq: 06 Nov 2024 17:03

Instrument :
 MSVOA_Y
 ClientSampleId :

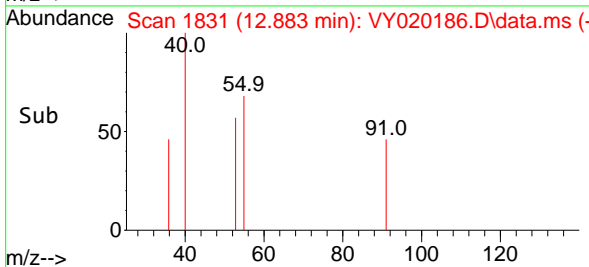
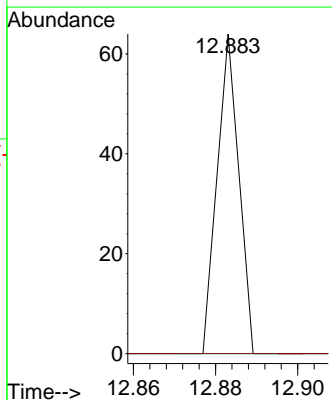
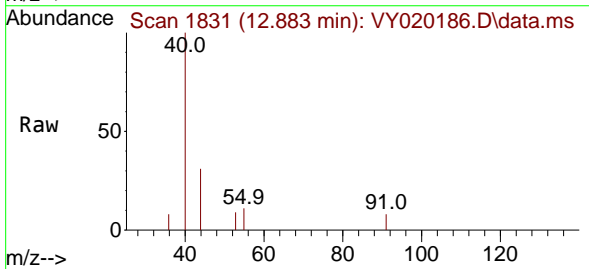


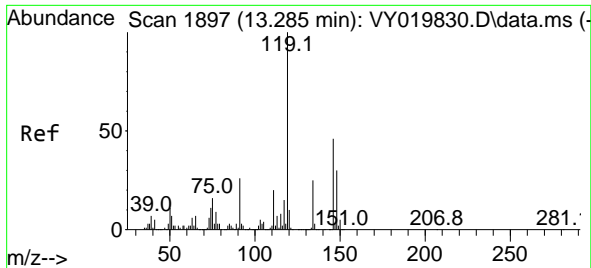
Tgt Ion: 75 Resp: 260
 Ion Ratio Lower Upper
 75 100
 53 0.0 66.8 100.2#
 89 0.0 35.8 53.6#



#82
 4-Chlorotoluene
 Concen: 1.126 ug/l
 RT: 12.883 min Scan# 1831
 Delta R.T. 0.104 min
 Lab File: VY020186.D
 Acq: 06 Nov 2024 17:03

Tgt Ion: 91 Resp: 23
 Ion Ratio Lower Upper
 91 100
 126 0.0 17.6 52.9#

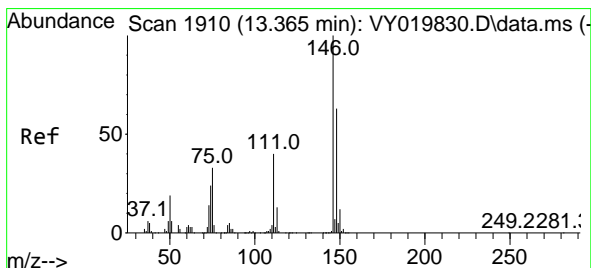
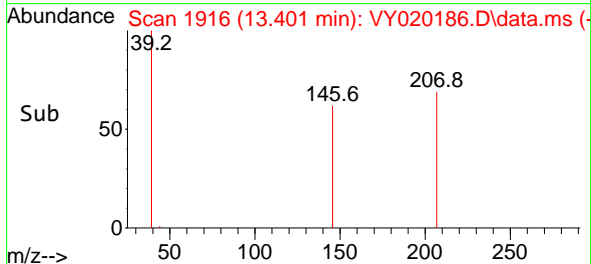
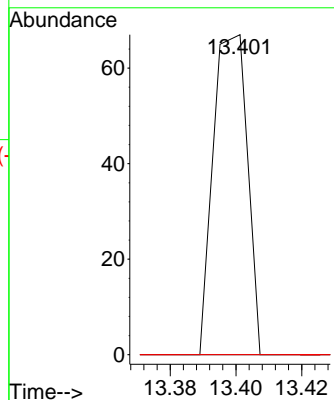
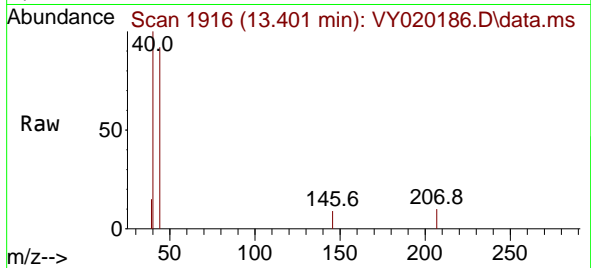




#87
 1,3-Dichlorobenzene
 Concen: 4.029 ug/l
 RT: 13.401 min Scan# 1916
 Delta R.T. 0.110 min
 Lab File: VY020186.D
 Acq: 06 Nov 2024 17:03

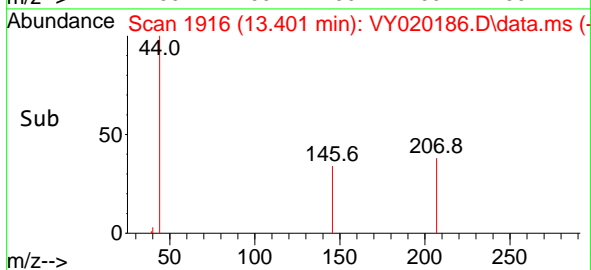
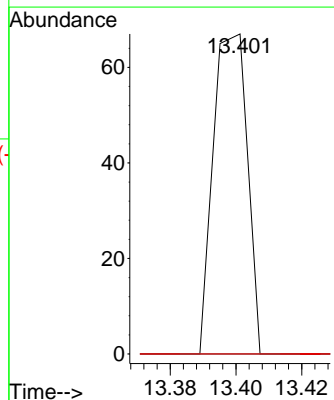
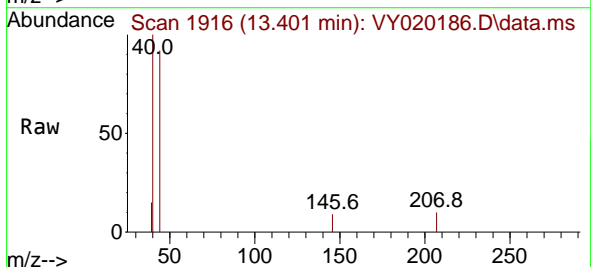
Instrument : MSVOA_Y
 ClientSampleId :

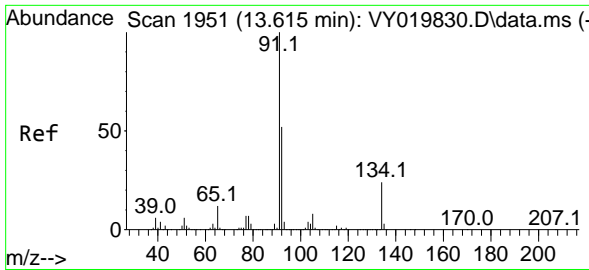
Tgt Ion:146 Resp: 48
 Ion Ratio Lower Upper
 146 100
 111 0.0 19.0 57.0#
 148 0.0 31.7 95.1#



#88
 1,4-Dichlorobenzene
 Concen: 4.046 ug/l
 RT: 13.401 min Scan# 1916
 Delta R.T. 0.031 min
 Lab File: VY020186.D
 Acq: 06 Nov 2024 17:03

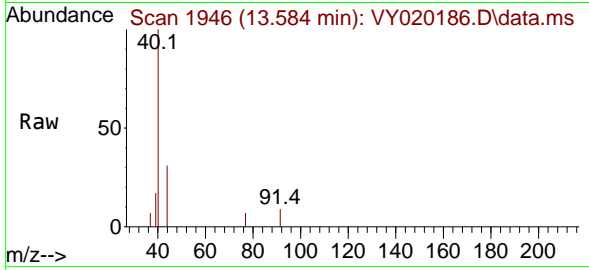
Tgt Ion:146 Resp: 48
 Ion Ratio Lower Upper
 146 100
 111 0.0 18.4 55.4#
 148 0.0 32.4 97.2#



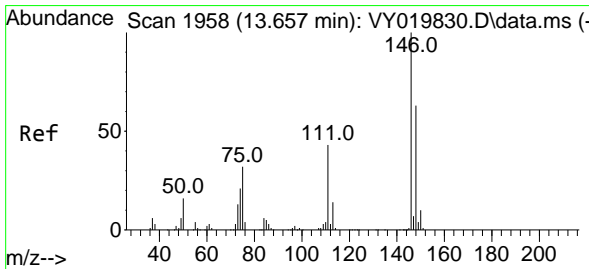
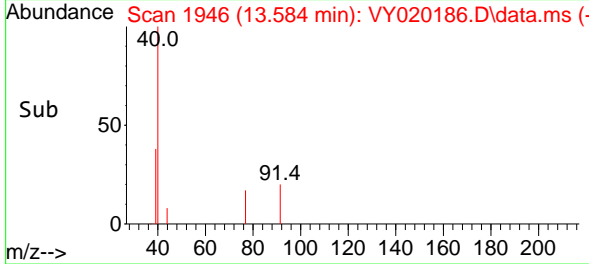
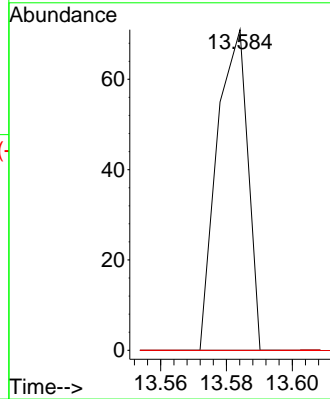


#89
 n-Butylbenzene
 Concen: 1.830 ug/l
 RT: 13.584 min Scan# 1916
 Delta R.T. -0.036 min
 Lab File: VY020186.D
 Acq: 06 Nov 2024 17:03

Instrument : MSVOA_Y
 ClientSampleId :

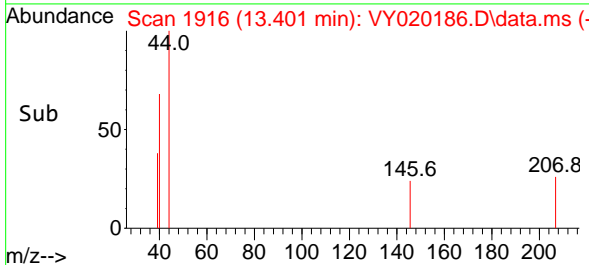
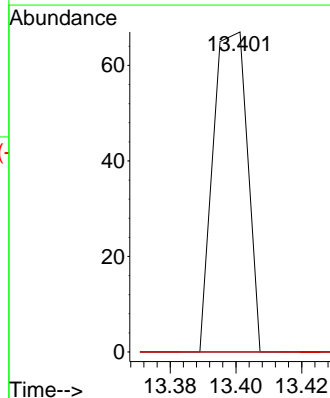
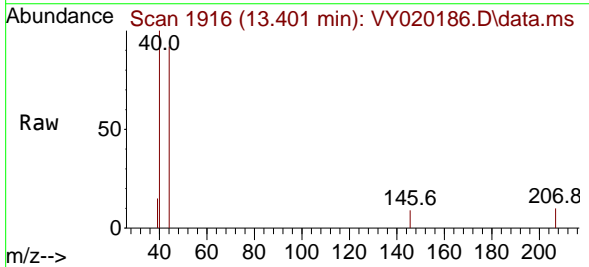


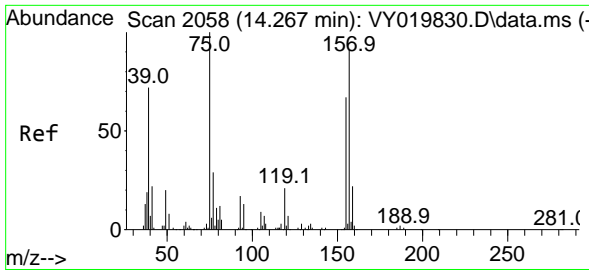
Tgt Ion	Resp	Lower	Upper
91	100		
92	0.0	26.6	79.7#
134	0.0	12.9	38.7#



#91
 1,2-Dichlorobenzene
 Concen: 4.635 ug/l
 RT: 13.401 min Scan# 1916
 Delta R.T. -0.256 min
 Lab File: VY020186.D
 Acq: 06 Nov 2024 17:03

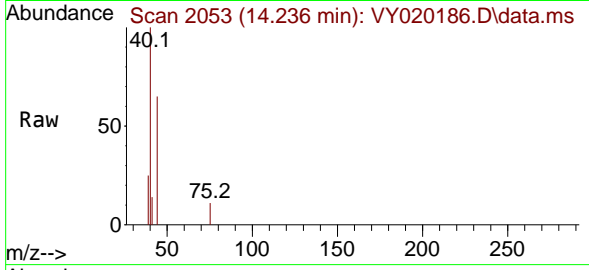
Tgt Ion	Resp	Lower	Upper
146	100		
111	0.0	19.9	59.7#
148	0.0	31.8	95.4#



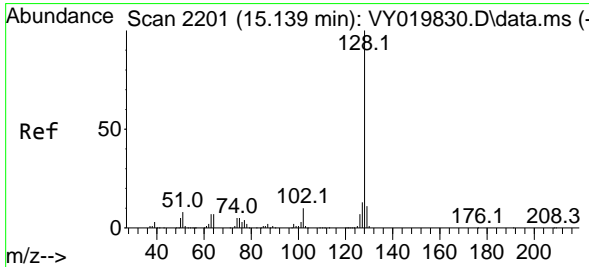
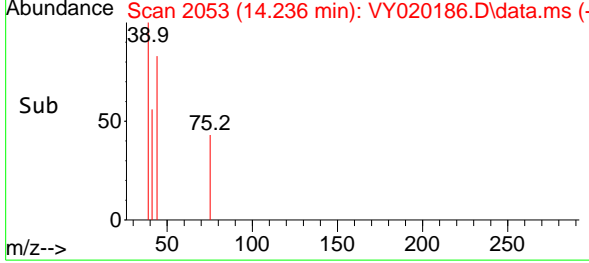
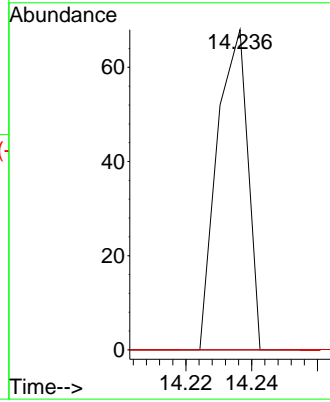


#92
 1,2-Dibromo-3-Chloropropane
 Concen: 57.209 ug/l
 RT: 14.236 min Scan# 2053
 Delta R.T. -0.036 min
 Lab File: VY020186.D
 Acq: 06 Nov 2024 17:03

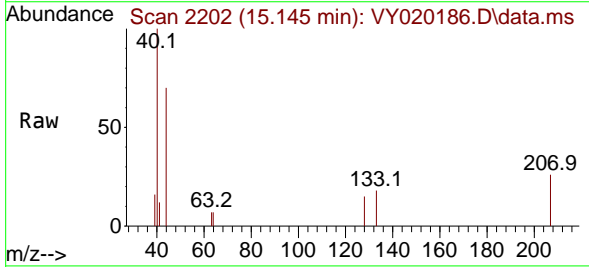
Instrument :
 MSVOA_Y
 ClientSampleId :



Tgt Ion: 75 Resp: 44
 Ion Ratio Lower Upper
 75 100
 155 0.0 48.6 145.8#
 157 0.0 62.7 188.2#



#95
 Naphthalene
 Concen: 5.770 ug/l
 RT: 15.145 min Scan# 2202
 Delta R.T. 0.000 min
 Lab File: VY020186.D
 Acq: 06 Nov 2024 17:03



Tgt Ion: 128 Resp: 60
 Ion Ratio Lower Upper
 128 100
 127 0.0 10.6 16.0#
 129 0.0 8.6 13.0#

