

Data Path : Z:\VOASRV\HPCHEM1\MSVOA\_Y\DATA\VY110719\  
 Data File : VY000571.D  
 Acq On : 07 Nov 2019 11:45  
 Operator : SY/MD  
 Sample : K5725-01RE  
 Misc : 3.00G/5ML/MSVOA\_Y/SOIL  
 ALS Vial : 6 Sample Multiplier: 1

Instrument :  
 MSVOA\_Y  
 ClientSampleId :  
 SO-1RE

Quant Time: Nov 08 04:03:04 2019  
 Quant Method : Z:\VOASRV\HPCHEM1\MSVOA\_Y\METHODS\82Y103019S.M  
 Quant Title : SW846 8260  
 QLast Update : Wed Oct 30 13:30:53 2019  
 Response via : Initial Calibration

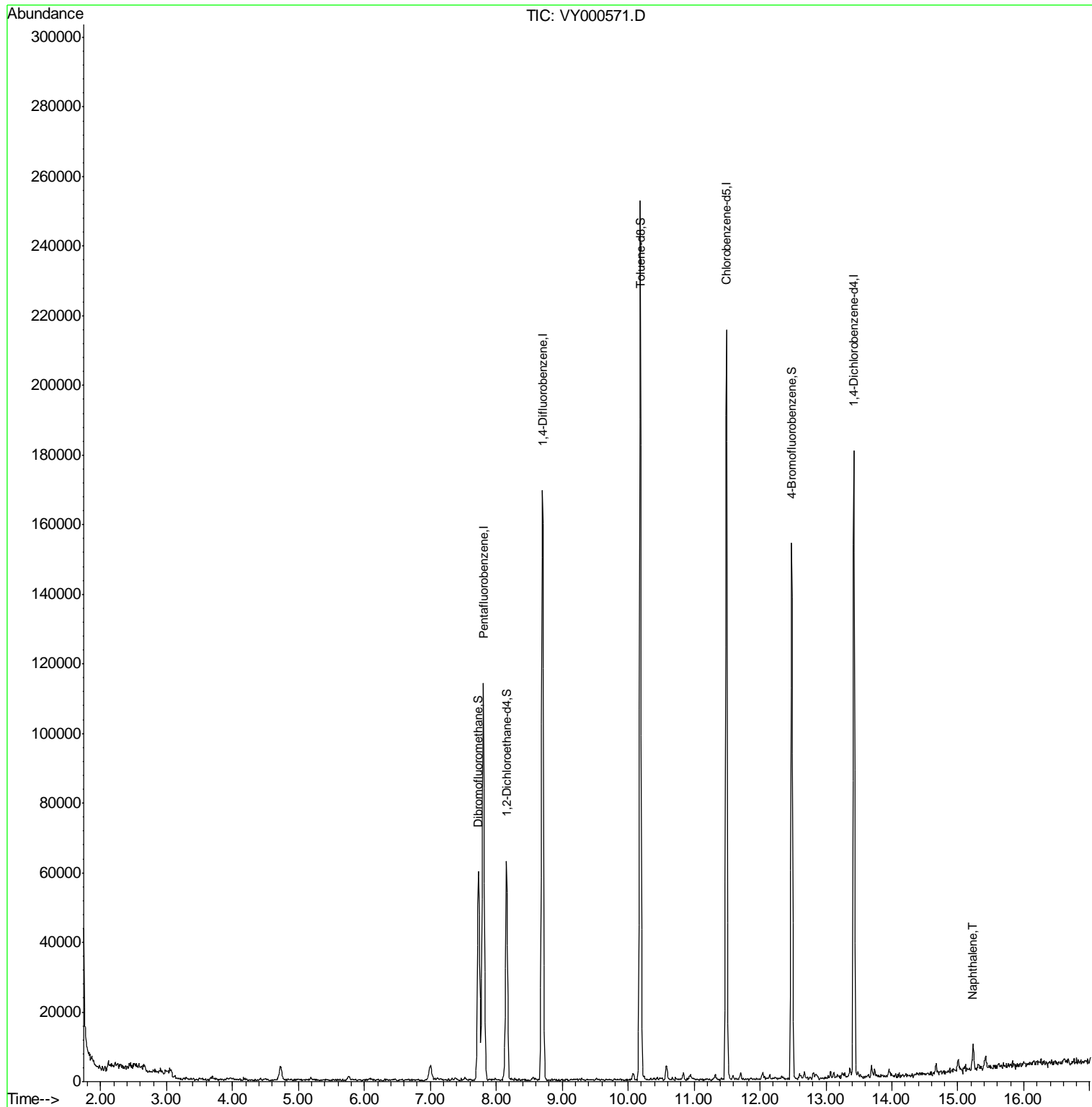
Internal Standards	R.T.	QIon	Response	Conc	Units	Dev(Min)
1) Pentafluorobenzene	7.80	168	86095	50.00	ug/l	0.00
34) 1,4-Difluorobenzene	8.70	114	143768	50.00	ug/l	0.00
63) Chlorobenzene-d5	11.49	117	112682	50.00	ug/l	0.00
72) 1,4-Dichlorobenzene-d4	13.42	152	41826	50.00	ug/l	0.00
System Monitoring Compounds						
33) 1,2-Dichloroethane-d4	8.16	65	46556	52.25	ug/l	0.00
Spiked Amount	50.000		Recovery	=	104.50%	
35) Dibromofluoromethane	7.73	113	42286	50.10	ug/l	0.00
Spiked Amount	50.000		Recovery	=	100.20%	
50) Toluene-d8	10.18	98	162418	50.71	ug/l	0.00
Spiked Amount	50.000		Recovery	=	101.42%	
62) 4-Bromofluorobenzene	12.48	95	45784	37.55	ug/l	0.00
Spiked Amount	50.000		Recovery	=	75.10%	
Target Compounds						
95) Naphthalene	15.23	128	4763	2.529	ug/l #	94

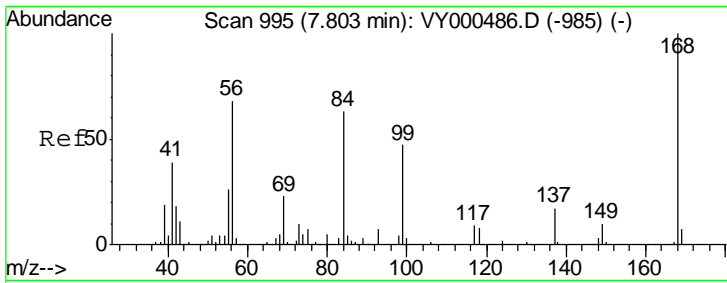
(#) = qualifier out of range (m) = manual integration (+) = signals summed

Data Path : Z:\VOASRV\HPCHEM1\MSVOA\_Y\DATA\VY110719\  
 Data File : VY000571.D  
 Acq On : 07 Nov 2019 11:45  
 Operator : SY/MD  
 Sample : K5725-01RE  
 Misc : 3.00G/5ML/MSVOA\_Y/SOIL  
 ALS Vial : 6 Sample Multiplier: 1

Instrument :  
 MSVOA\_Y  
 ClientSampleId :  
 SO-1RE

Quant Time: Nov 08 04:03:04 2019  
 Quant Method : Z:\VOASRV\HPCHEM1\MSVOA\_Y\METHODS\82Y103019S.M  
 Quant Title : SW846 8260  
 QLast Update : Wed Oct 30 13:30:53 2019  
 Response via : Initial Calibration

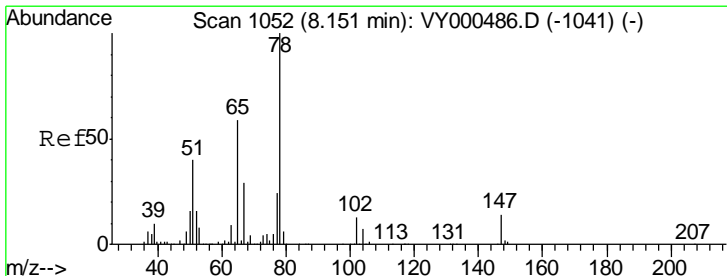
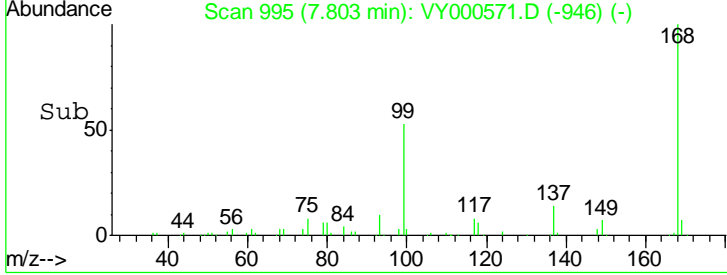
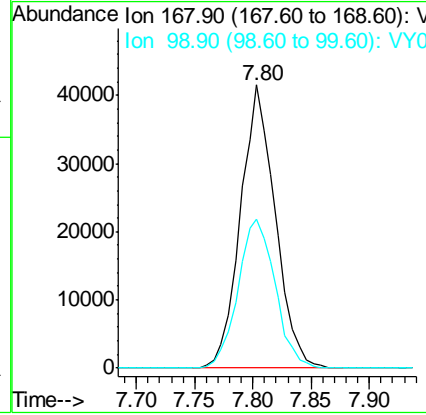
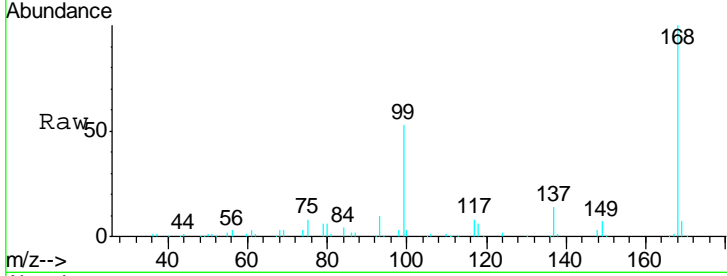




#1  
 Pentafluorobenzene  
 Concen: 50.000 ug/l  
 RT: 7.80 min Scan# 995  
 Delta R.T. 0.00 min  
 Lab File: VY000571.D  
 Acq: 07 Nov 2019 11:45

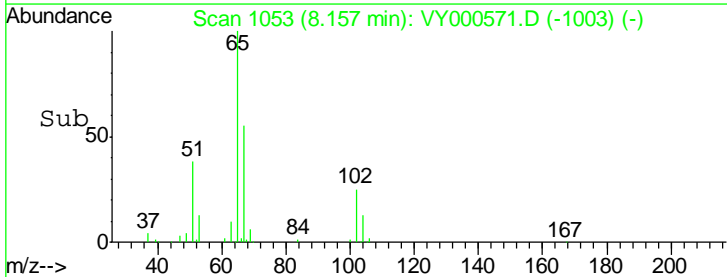
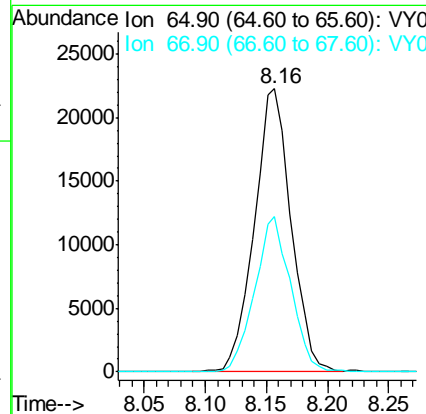
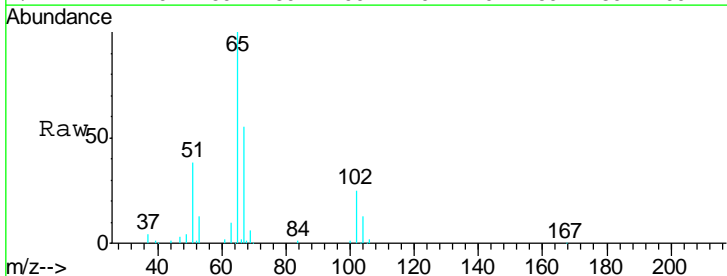
Instrument : MSVOA\_Y  
 ClientSampled : SO-1RE

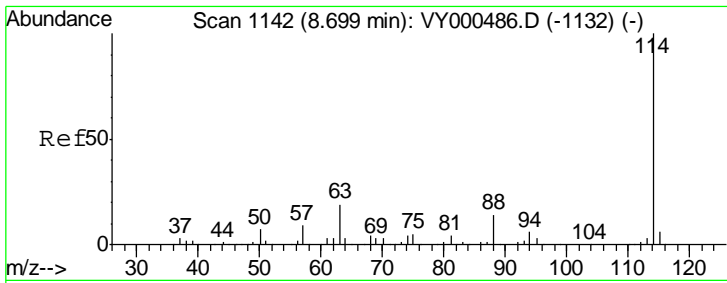
Tgt Ion: 168 Resp: 86095  
 Ion Ratio Lower Upper  
 168 100  
 99 52.8 45.7 68.5



#33  
 1,2-Dichloroethane-d4  
 Concen: 52.253 ug/l  
 RT: 8.16 min Scan# 1053  
 Delta R.T. 0.01 min  
 Lab File: VY000571.D  
 Acq: 07 Nov 2019 11:45

Tgt Ion: 65 Resp: 46556  
 Ion Ratio Lower Upper  
 65 100  
 67 53.9 0.0 107.2

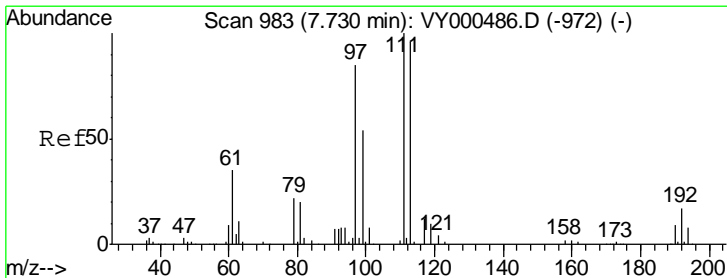
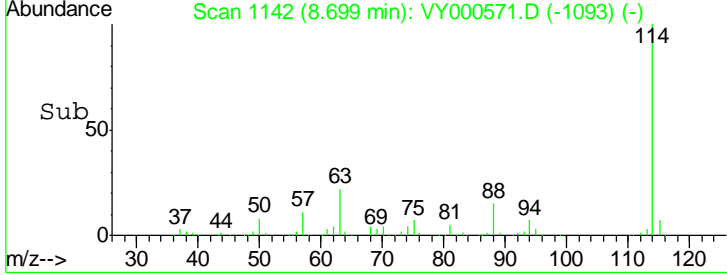
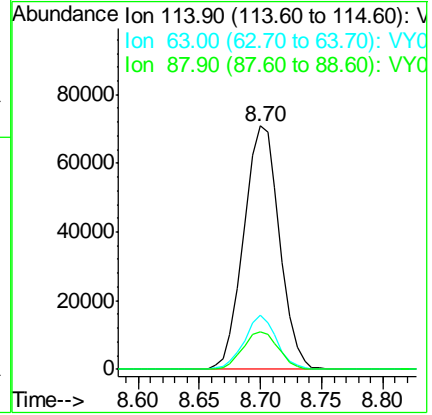
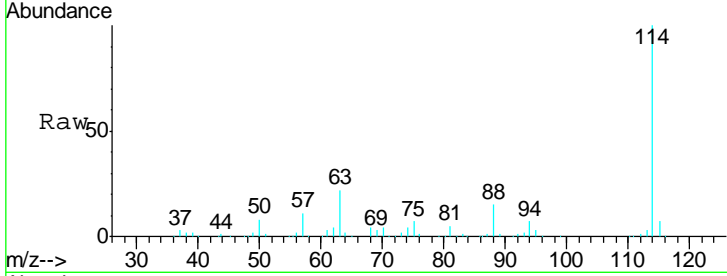




#34  
 1,4-Difluorobenzene  
 Concen: 50.000 ug/l  
 RT: 8.70 min Scan# 1142  
 Delta R.T. 0.00 min  
 Lab File: VY000571.D  
 Acq: 07 Nov 2019 11:45

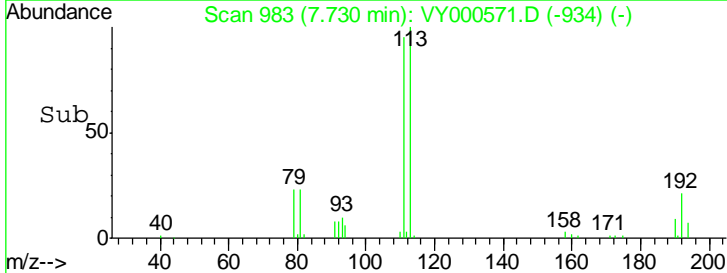
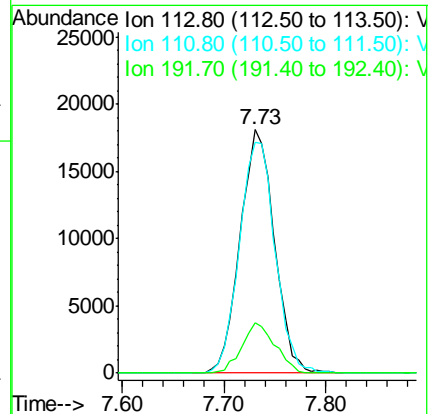
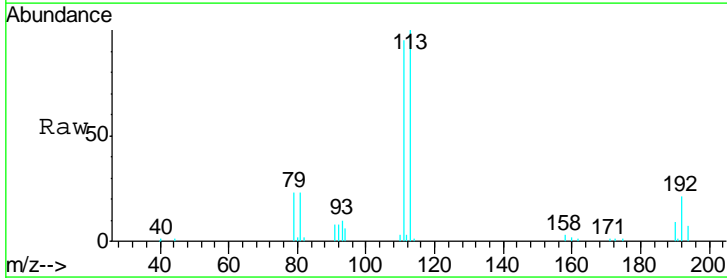
Instrument :  
 MSVOA\_Y  
 ClientSampled :  
 SO-1RE

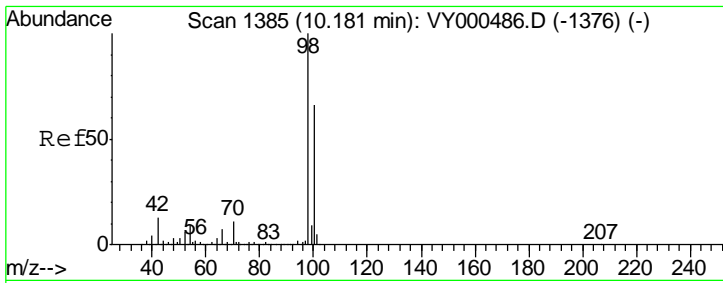
Tgt Ion	Resp	Lower	Upper
114	143768		
63	22.4	0.0	38.0
88	15.3	0.0	28.6



#35  
 Dibromofluoromethane  
 Concen: 50.101 ug/l  
 RT: 7.73 min Scan# 983  
 Delta R.T. 0.00 min  
 Lab File: VY000571.D  
 Acq: 07 Nov 2019 11:45

Tgt Ion	Resp	Lower	Upper
113	42286		
111	98.8	81.7	122.5
192	19.9	15.0	22.4

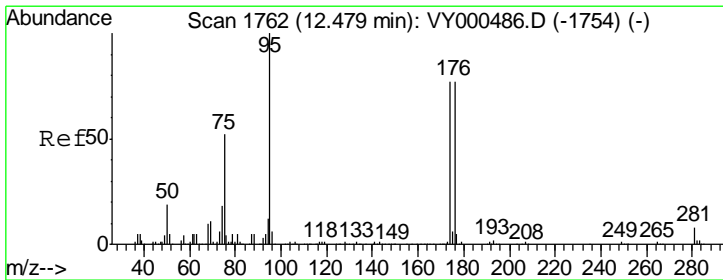
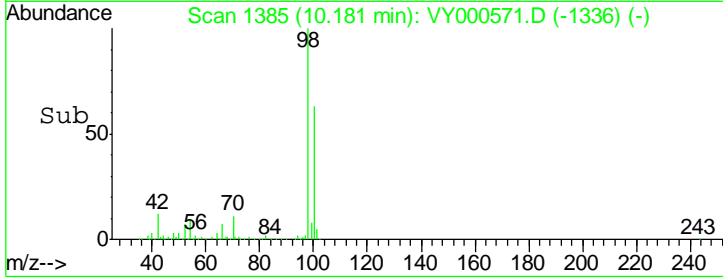
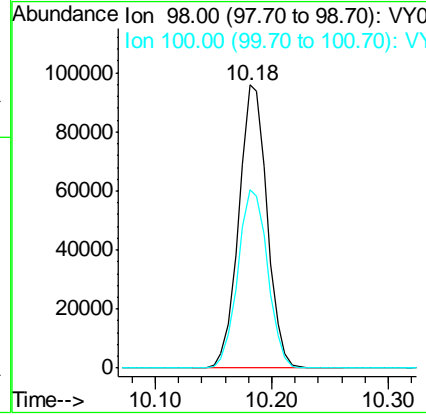
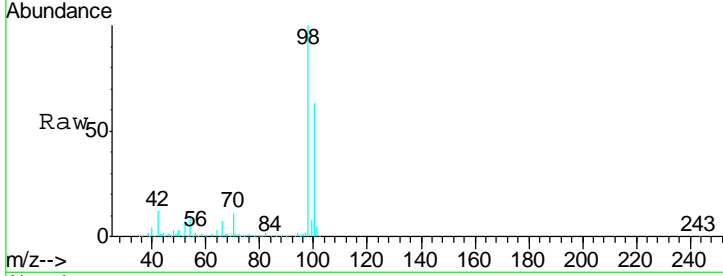




#50  
 Toluene-d8  
 Concen: 50.715 ug/l  
 RT: 10.18 min Scan# 1385  
 Delta R.T. 0.00 min  
 Lab File: VY000571.D  
 Acq: 07 Nov 2019 11:45

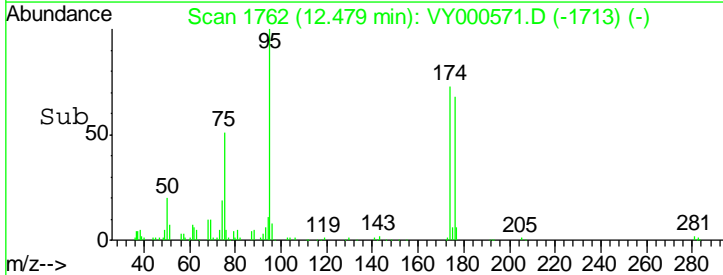
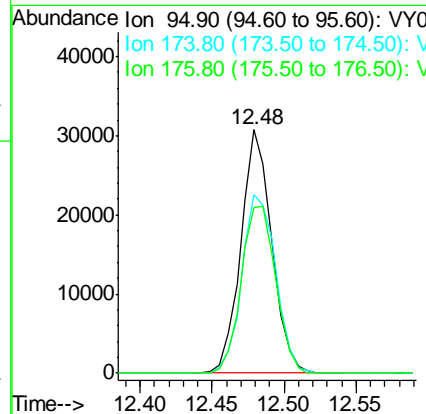
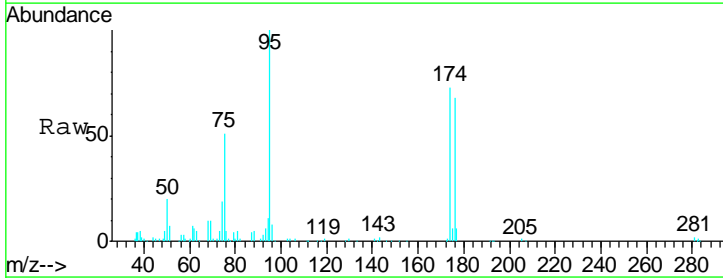
Instrument : MSVOA\_Y  
 ClientSampled : SO-1RE

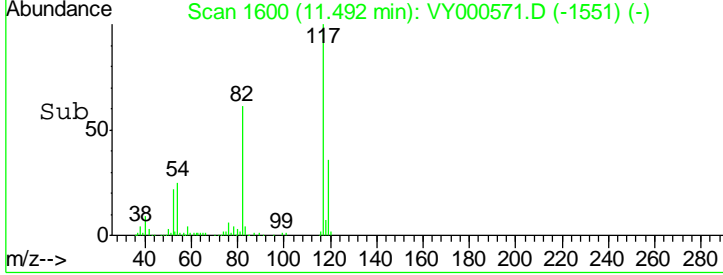
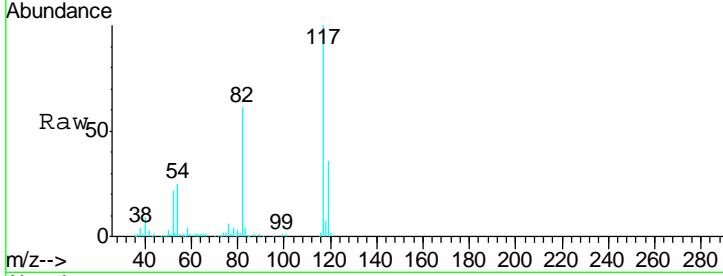
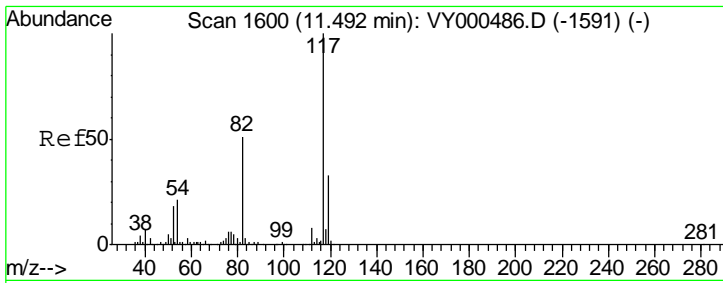
Tgt Ion	Resp	Lower	Upper
98	162418		
100	66.3	52.9	79.3



#62  
 4-Bromofluorobenzene  
 Concen: 37.552 ug/l  
 RT: 12.48 min Scan# 1762  
 Delta R.T. 0.00 min  
 Lab File: VY000571.D  
 Acq: 07 Nov 2019 11:45

Tgt Ion	Resp	Lower	Upper
95	45784		
174	79.9	0.0	161.6
176	76.1	0.0	157.8

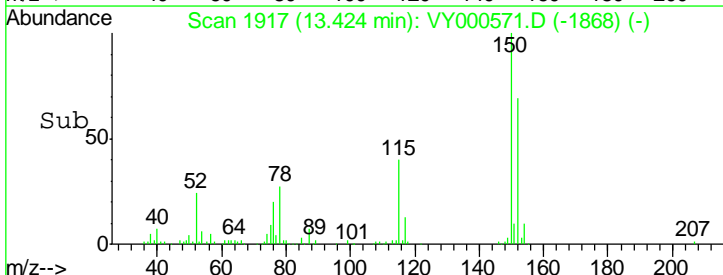
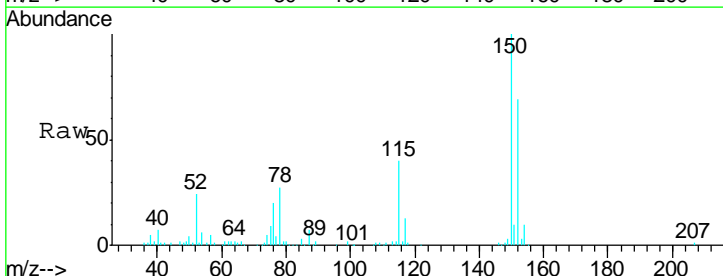
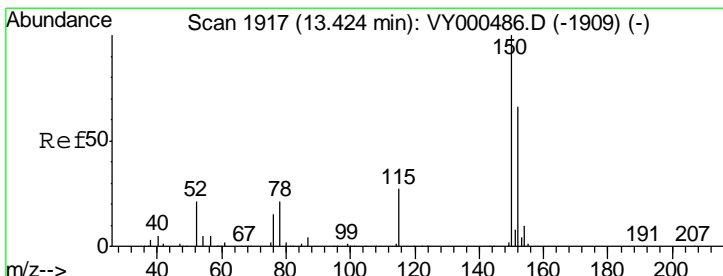
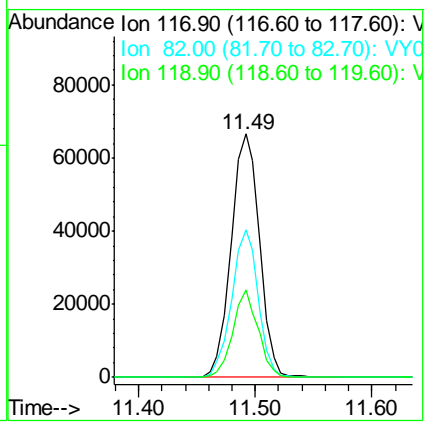




#63  
 Chlorobenzene-d5  
 Concen: 50.000 ug/l  
 RT: 11.49 min Scan# 1600  
 Delta R.T. 0.00 min  
 Lab File: VY000571.D  
 Acq: 07 Nov 2019 11:45

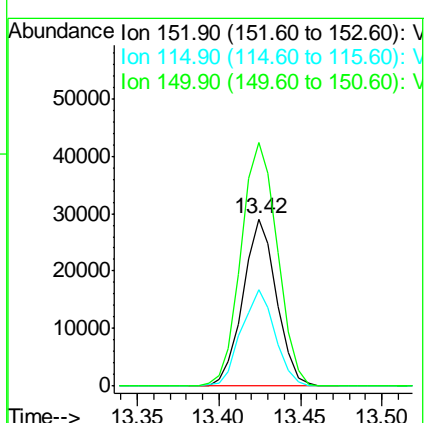
Instrument : MSVOA\_Y  
 ClientSampled : SO-1RE

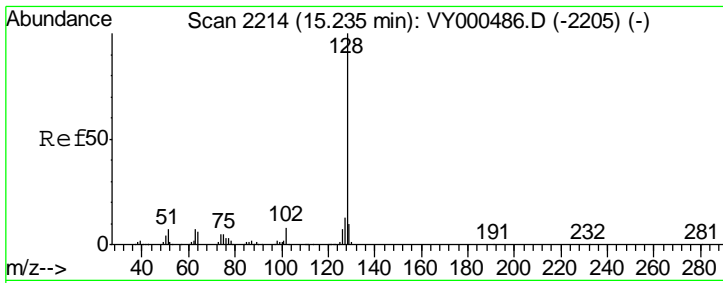
Tgt Ion	Resp	Lower	Upper
117	112682		
82	60.6	40.8	61.2
119	35.8	26.2	39.2



#72  
 1,4-Dichlorobenzene-d4  
 Concen: 50.000 ug/l  
 RT: 13.42 min Scan# 1917  
 Delta R.T. 0.00 min  
 Lab File: VY000571.D  
 Acq: 07 Nov 2019 11:45

Tgt Ion	Resp	Lower	Upper
152	41826		
115	57.9	29.1	87.4
150	157.3	0.0	348.8





#95  
 Naphthalene  
 Concen: 2.529 ug/l  
 RT: 15.23 min Scan# 2213  
 Delta R.T. -0.01 min  
 Lab File: VY000571.D  
 Acq: 07 Nov 2019 11:45

Instrument : MSVOA\_Y  
 ClientSampled : SO-1RE

Tgt Ion	Resp	Lower	Upper
128	4763		
127	8.9	9.8	14.6#
129	12.3	8.7	13.1

