

Data Path : Z:\voasrv\HPCHEM1\MSVOA\_Y\Data\vy110719\  
 Data File : VY000575.D  
 Acq On : 07 Nov 2019 13:14  
 Operator : SY/MD  
 Sample : K5723-06  
 Misc : 7.71G/5ML/MSVOA\_Y/SOIL  
 ALS Vial : 10 Sample Multiplier: 1

Instrument :  
 MSVOA\_Y  
 ClientSampleId :  
 8-C

Integration Parameters: RTEINT.P  
 Integrator: RTE  
 Smoothing : ON Filtering: 5  
 Sampling : 1 Min Area: 3 % of largest Peak  
 Start Thrs: 0.2 Max Peaks: 100  
 Stop Thrs : 0 Peak Location: TOP

If leading or trailing edge < 100 prefer < Baseline drop else tangent >  
 Peak separation: 5

Method : Z:\VOASRV\HPCHEM1\MSVOA\_Y\METHODS\82Y103019S.M  
 Title : SW846 8260

Signal : TIC

peak #	R.T. min	first scan	max scan	last scan	PK TY	peak height	corr. area	corr. % max.	% of total
1	2.225	73	80	88	rBV5	7994	15125	1.10%	0.199%
2	4.730	480	491	501	rBV2	37207	116214	8.47%	1.531%
3	7.730	972	983	989	rBV	183197	441286	32.14%	5.815%
4	7.803	989	995	1010	rVB	315407	710668	51.77%	9.365%
5	8.157	1041	1053	1063	rBV	195819	431389	31.42%	5.684%
6	8.699	1134	1142	1154	rVB	520356	1005557	73.24%	13.250%
7	10.181	1377	1385	1395	rBV	794471	1372870	100.00%	18.090%
8	11.491	1593	1600	1611	rVB	730286	1188312	86.56%	15.658%
9	12.479	1756	1762	1775	rBV	535079	861465	62.75%	11.352%
10	13.424	1911	1917	1923	rVB	650335	986012	71.82%	12.993%
11	13.759	1965	1972	1975	rBV9	8819	22533	1.64%	0.297%
12	13.960	2002	2005	2012	rVB2	9076	18023	1.31%	0.237%
13	14.869	2147	2154	2159	rBV10	11212	29849	2.17%	0.393%
14	15.094	2186	2191	2204	rVB5	26637	84126	6.13%	1.109%
15	15.241	2205	2215	2221	rBV8	32670	110910	8.08%	1.461%
16	15.546	2257	2265	2272	rBV9	20325	60309	4.39%	0.795%
17	15.722	2286	2294	2301	rBV7	16430	47545	3.46%	0.627%
18	16.033	2340	2345	2346	rBV4	11505	17213	1.25%	0.227%
19	16.155	2361	2365	2368	rBV2	14269	20280	1.48%	0.267%
20	16.478	2414	2418	2424	rBV10	7888	19138	1.39%	0.252%
21	16.759	2459	2464	2471	rVB10	11024	30107	2.19%	0.397%

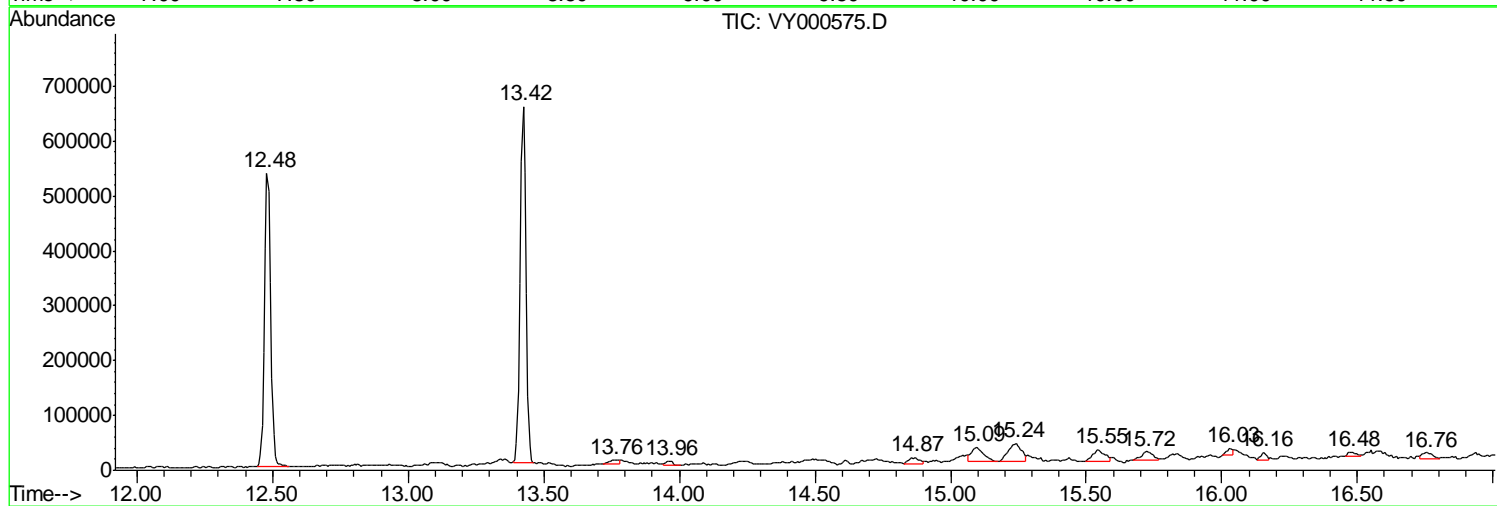
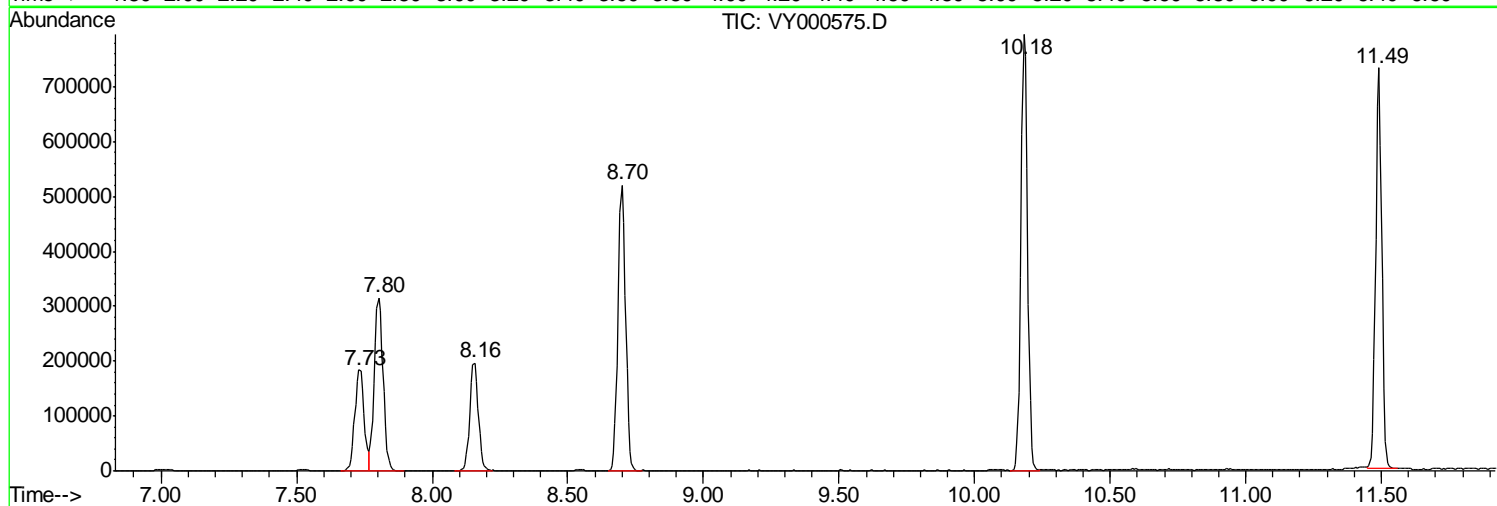
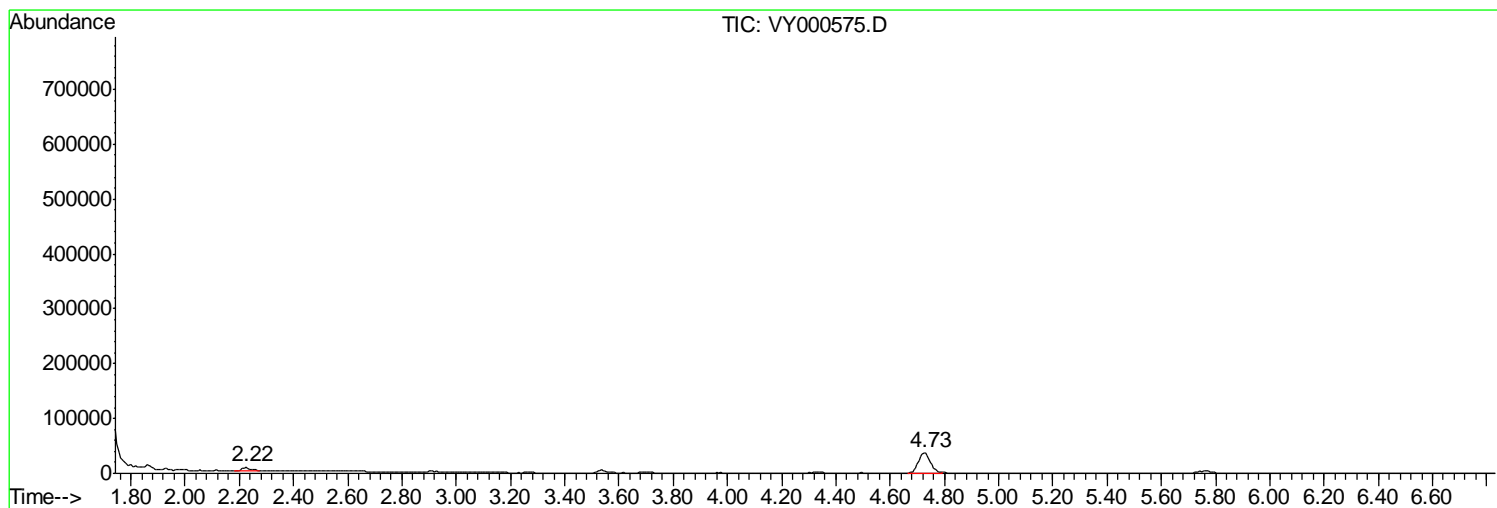
Sum of corrected areas: 7588931

Data Path : Z:\voasrv\HPCHEM1\MSVOA\_Y\Data\vy110719\  
 Data File : VY000575.D  
 Acq On : 07 Nov 2019 13:14  
 Operator : SY/MD  
 Sample : K5723-06  
 Misc : 7.71G/5ML/MSVOA\_Y/SOIL  
 ALS Vial : 10 Sample Multiplier: 1

Instrument :  
 MSVOA\_Y  
 ClientSampleId :  
 8-C

Quant Method : Z:\VOASRV\HPCHEM1\MSVOA\_Y\METHODS\82Y103019S.M  
 Quant Title : SW846 8260

TIC Library : C:\DATABASE\NIST11.L  
 TIC Integration Parameters: LSCINT.P



Data Path : Z:\voasrv\HPCHEM1\MSVOA\_Y\Data\vy110719\  
 Data File : VY000575.D  
 Acq On : 07 Nov 2019 13:14  
 Operator : SY/MD  
 Sample : K5723-06  
 Misc : 7.71G/5ML/MSVOA\_Y/SOIL  
 ALS Vial : 10 Sample Multiplier: 1

Instrument :  
 MSVOA\_Y  
 ClientSampled :  
 8-C

Quant Method : Z:\VOASRV\HPCHEM1\MSVOA\_Y\METHODS\82Y103019S.M  
 Quant Title : SW846 8260

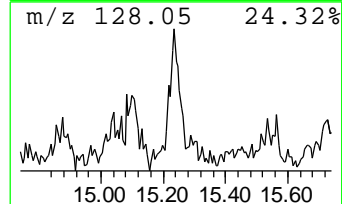
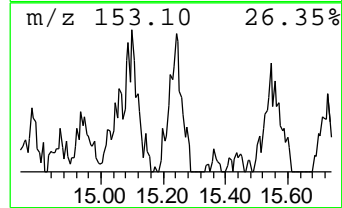
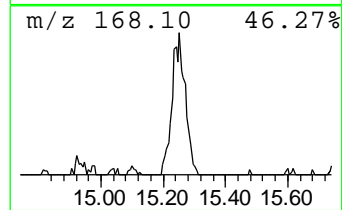
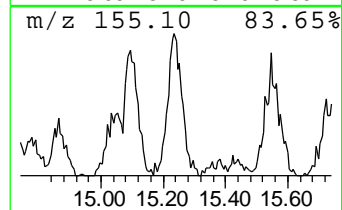
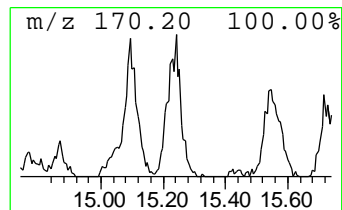
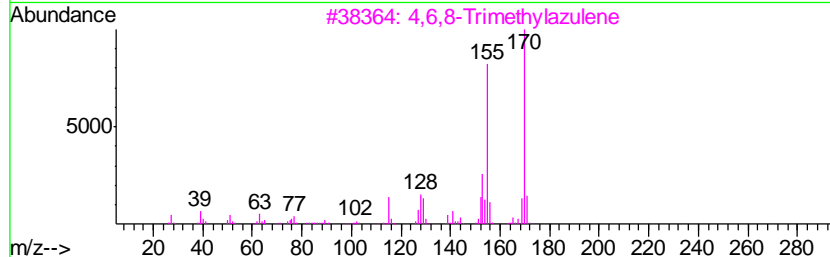
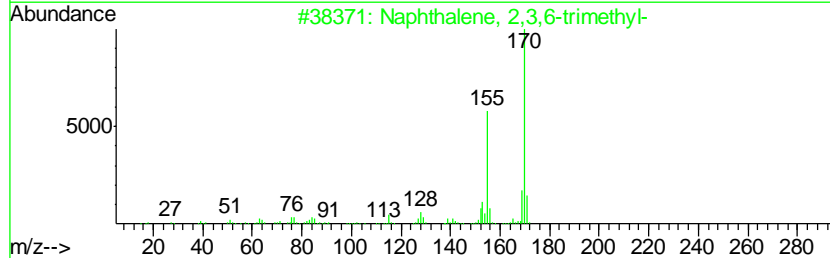
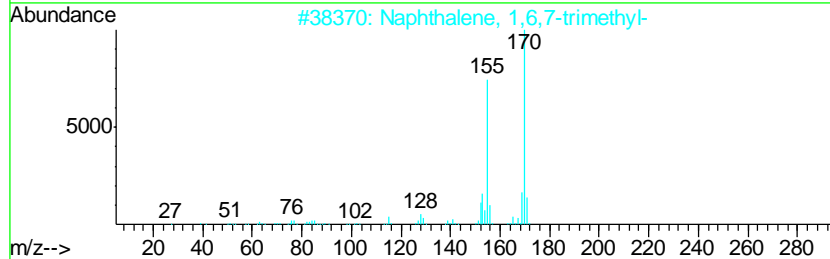
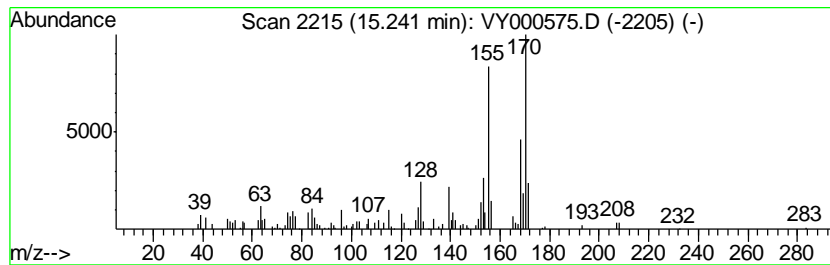
TIC Library : C:\DATABASE\NIST11.L  
 TIC Integration Parameters: LSCINT.P

\*\*\*\*\*  
 Peak Number 1 Naphthalene, 1,6,7-trimethyl- Concentration Rank 1

R.T.	EstConc	Area	Relative to ISTD	R.T.
15.24	5.62 ug/l	110910	1,4-Dichlorobenzene-d4	13.42

Hit#	of	Tentative ID	MW	MolForm	CAS#	Qual
1	5	Naphthalene, 1,6,7-trimethyl-	170	C13H14	002245-38-7	89
2		Naphthalene, 2,3,6-trimethyl-	170	C13H14	000829-26-5	70
3		4,6,8-Trimethylazulene	170	C13H14	000941-81-1	70
4		Naphthalene, 1,4,6-trimethyl-	170	C13H14	002131-42-2	70
5		3-(2-Methyl-propenyl)-1H-indene	170	C13H14	1000187-78-5	52



Data Path : Z:\voasrv\HPCHEM1\MSVOA\_Y\Data\vy110719\  
Data File : VY000575.D  
Acq On : 07 Nov 2019 13:14  
Operator : SY/MD  
Sample : K5723-06  
Misc : 7.71G/5ML/MSVOA\_Y/SOIL  
ALS Vial : 10 Sample Multiplier: 1

Instrument :  
MSVOA\_Y  
ClientSampleId :  
8-C

Quant Method : Z:\VOASRV\HPCHEM1\MSVOA\_Y\METHODS\82Y103019S.M  
Quant Title : SW846 8260

TIC Library : C:\DATABASE\NIST11.L  
TIC Integration Parameters: LSCINT.P

TIC Top Hit name	RT	EstConc	Units	Response	--Internal Standard--			
					#	RT	Resp	Conc
Naphthalene, 1,6,...	15.24	5.6	ug/l	110910	4	13.42	986012	50.0