

Data Path : Z:\voasrv\HPCHEM1\MSVOA\_Y\Data\VY110724\  
 Data File : VY020212.D  
 Acq On : 07 Nov 2024 17:17  
 Operator : SY/MD  
 Sample : P4697-01  
 Misc : 5.03g/5.0mL/MSVOA\_Y/SOIL/B  
 ALS Vial : 18 Sample Multiplier: 1

Instrument :  
 MSVOA\_Y  
 ClientSampleId :

Quant Time: Nov 08 00:30:04 2024  
 Quant Method : Z:\voasrv\HPCHEM1\MSVOA\_Y\methods\82Y103024S.M  
 Quant Title : SW846 8260  
 QLast Update : Thu Oct 31 15:23:13 2024  
 Response via : Initial Calibration

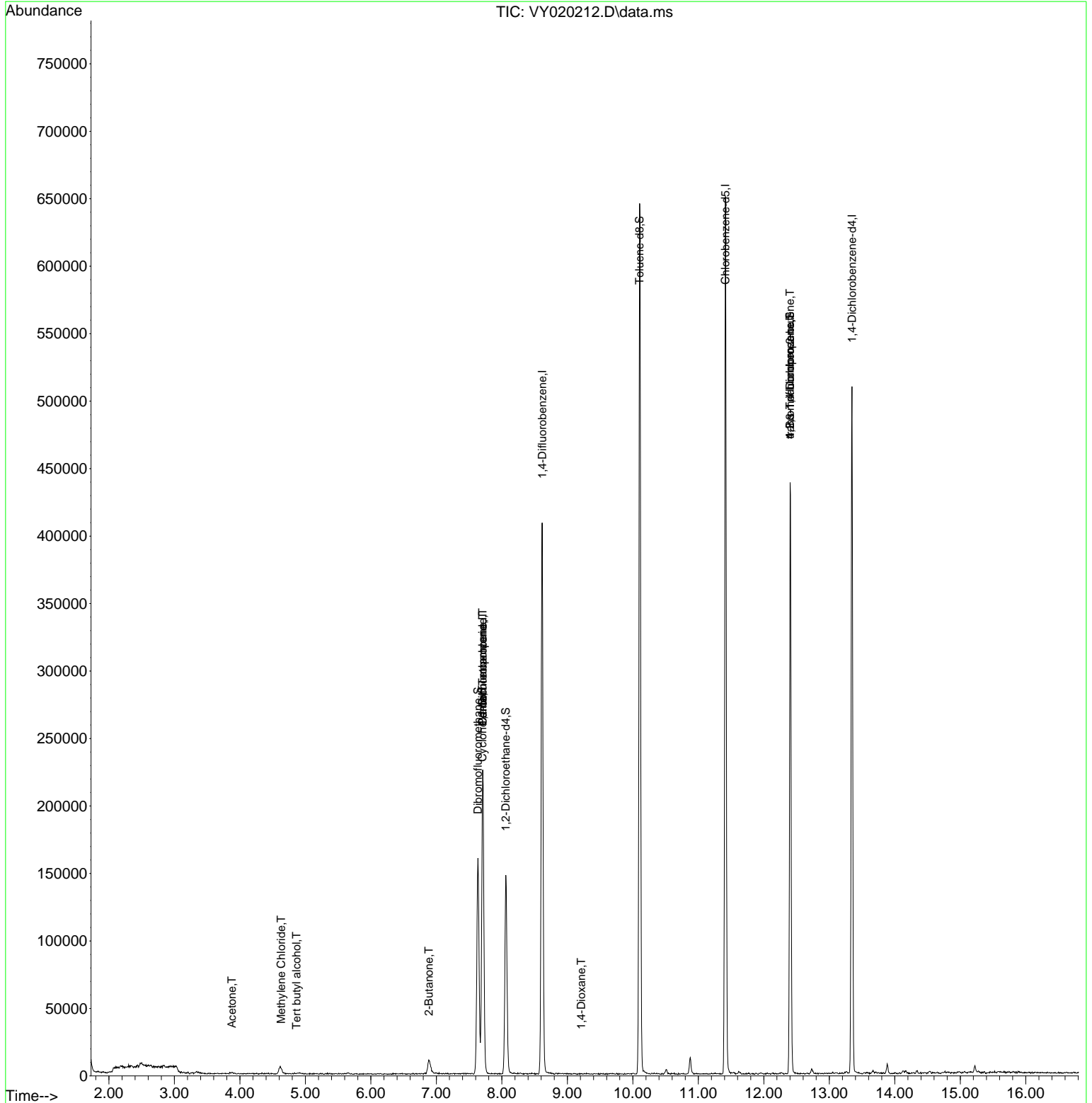
Compound	R.T.	QIon	Response	Conc	Units	Dev(Min)
-----						
Internal Standards						
1) Pentafluorobenzene	7.707	168	152527	50.000	ug/l	# 0.00
34) 1,4-Difluorobenzene	8.616	114	321278	50.000	ug/l	0.00
63) Chlorobenzene-d5	11.414	117	305388	50.000	ug/l	0.00
72) 1,4-Dichlorobenzene-d4	13.346	152	114309	50.000	ug/l	0.00
System Monitoring Compounds						
33) 1,2-Dichloroethane-d4	8.061	65	114208	59.995	ug/l	0.00
Spiked Amount	50.000	Range	50 - 163	Recovery	=	119.980%
35) Dibromofluoromethane	7.634	113	108851	53.289	ug/l	0.00
Spiked Amount	50.000	Range	54 - 147	Recovery	=	106.580%
50) Toluene-d8	10.103	98	401186	49.341	ug/l	0.00
Spiked Amount	50.000	Range	58 - 134	Recovery	=	98.680%
62) 4-Bromofluorobenzene	12.402	95	127400	48.240	ug/l	0.00
Spiked Amount	50.000	Range	29 - 146	Recovery	=	96.480%
Target Compounds						
						Qvalue
11) Tert butyl alcohol	4.866	59	266	1.943	ug/l	# 19
16) Acetone	3.879	43	1909	4.312	ug/l	# 51
20) Methylene Chloride	4.629	84	3848	1.935	ug/l	# 81
25) 2-Butanone	6.884	43	813	1.355	ug/l	# 68
31) Cyclohexane	7.701	56	4878	1.412	ug/l	# 56
36) 1,1-Dichloropropene	7.707	75	15950	5.055	ug/l	# 47
38) Carbon Tetrachloride	7.707	117	18215	5.740	ug/l	# 15
49) 1,4-Dioxane	9.213	88	19	1.546	ug/l	# 1
76) 1,2,3-Trichloropropane	12.402	75	75518	70.477	ug/l	# 100
81) trans-1,4-Dichloro-2-b...	12.402	75	75518	151.594	ug/l	# 16
-----						

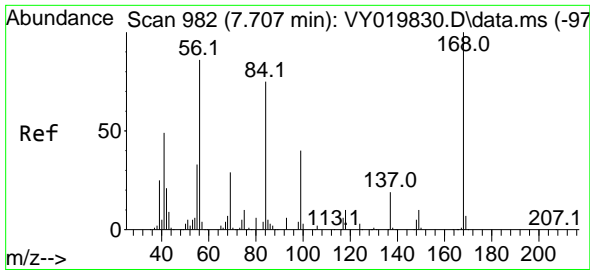
(#) = qualifier out of range (m) = manual integration (+) = signals summed

Data Path : Z:\voasrv\HPCHEM1\MSVOA\_Y\Data\VY110724\  
 Data File : VY020212.D  
 Acq On : 07 Nov 2024 17:17  
 Operator : SY/MD  
 Sample : P4697-01  
 Misc : 5.03g/5.0mL/MSVOA\_Y/SOIL/B  
 ALS Vial : 18 Sample Multiplier: 1

Instrument :  
 MSVOA\_Y  
 ClientSampleId :

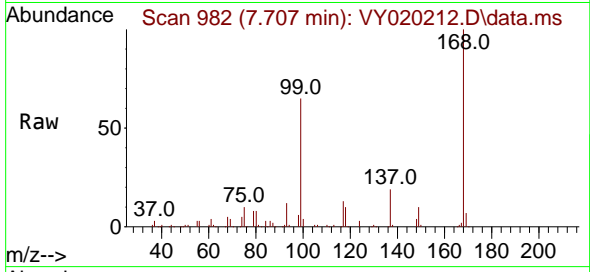
Quant Time: Nov 08 00:30:04 2024  
 Quant Method : Z:\voasrv\HPCHEM1\MSVOA\_Y\methods\82Y103024S.M  
 Quant Title : SW846 8260  
 QLast Update : Thu Oct 31 15:23:13 2024  
 Response via : Initial Calibration



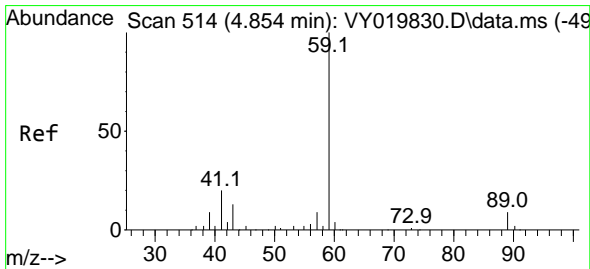
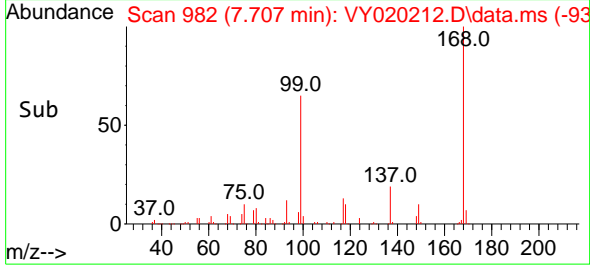
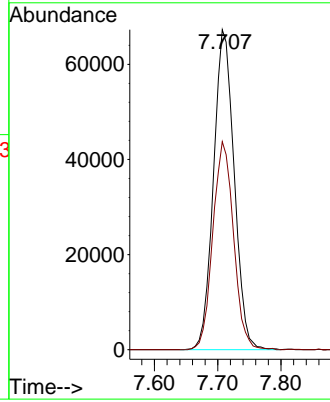


#1  
 Pentafluorobenzene  
 Concen: 50.000 ug/l  
 RT: 7.707 min Scan# 91  
 Delta R.T. 0.000 min  
 Lab File: VY020212.D  
 Acq: 07 Nov 2024 17:17

Instrument :  
 MSVOA\_Y  
 ClientSampleId :

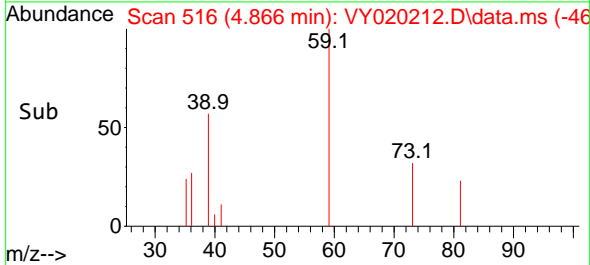
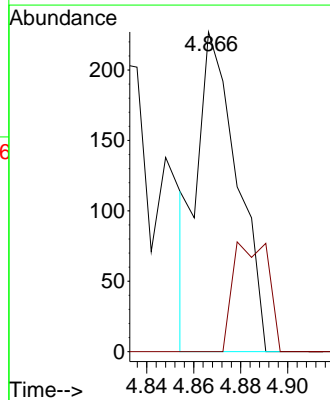
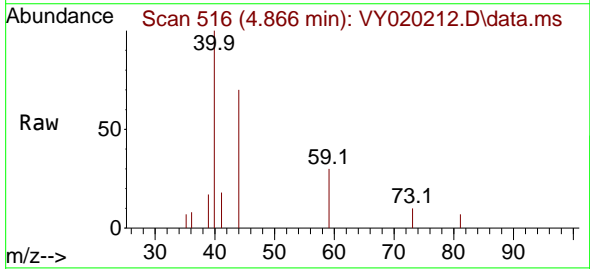


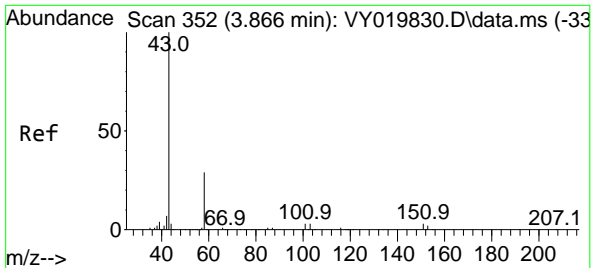
Tgt Ion:168 Resp: 152527  
 Ion Ratio Lower Upper  
 168 100  
 99 65.0 39.1 58.7#



#11  
 Tert butyl alcohol  
 Concen: 1.943 ug/l  
 RT: 4.866 min Scan# 516  
 Delta R.T. 0.006 min  
 Lab File: VY020212.D  
 Acq: 07 Nov 2024 17:17

Tgt Ion: 59 Resp: 266  
 Ion Ratio Lower Upper  
 59 100  
 57 30.5 3.0 4.6#

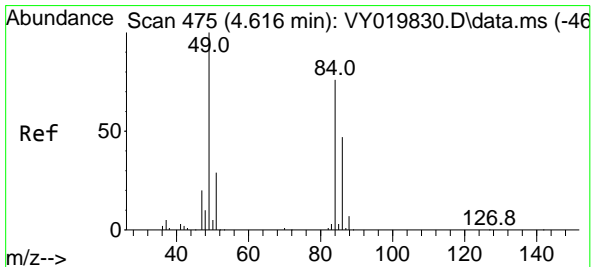
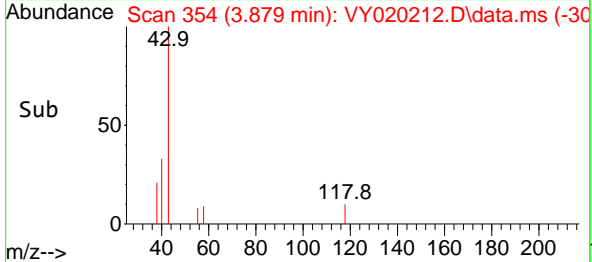
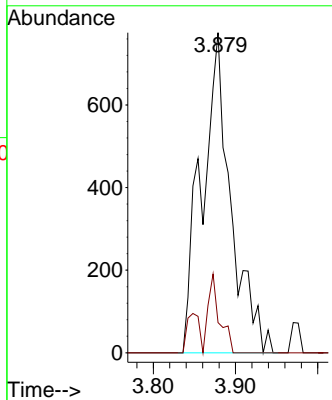
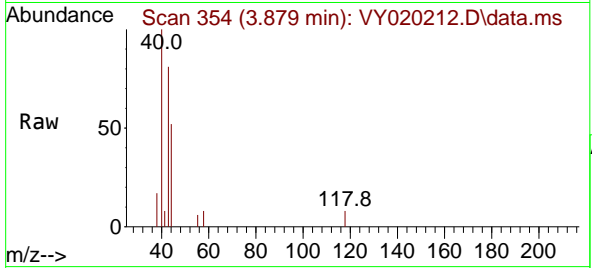




#16  
 Acetone  
 Concen: 4.312 ug/l  
 RT: 3.879 min Scan# 31  
 Delta R.T. 0.006 min  
 Lab File: VY020212.D  
 Acq: 07 Nov 2024 17:17

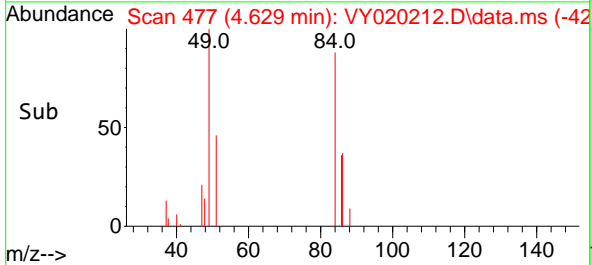
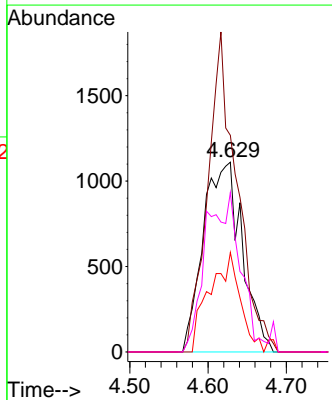
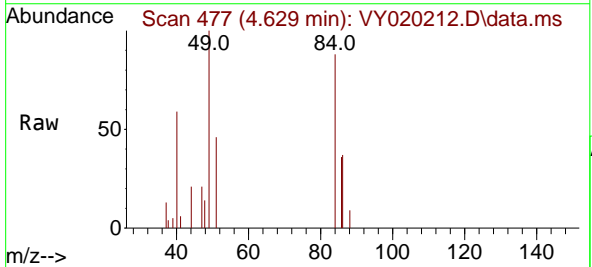
Instrument :  
 MSVOA\_Y  
 ClientSampleId :

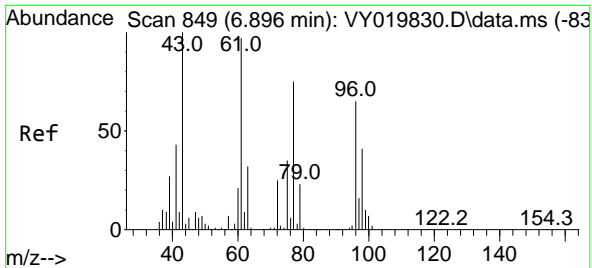
Tgt Ion: 43 Resp: 1909  
 Ion Ratio Lower Upper  
 43 100  
 58 9.4 31.7 47.5#



#20  
 Methylene Chloride  
 Concen: 1.935 ug/l  
 RT: 4.629 min Scan# 477  
 Delta R.T. 0.013 min  
 Lab File: VY020212.D  
 Acq: 07 Nov 2024 17:17

Tgt Ion: 84 Resp: 3848  
 Ion Ratio Lower Upper  
 84 100  
 49 114.1 84.4 126.6  
 51 52.5 26.0 39.0#  
 86 84.1 49.5 74.3#

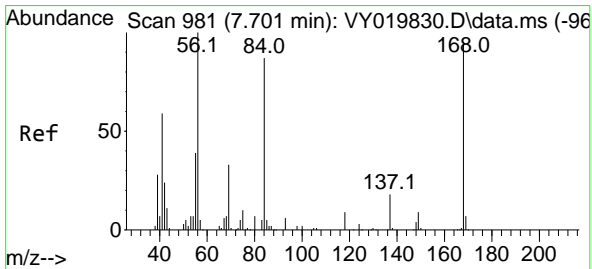
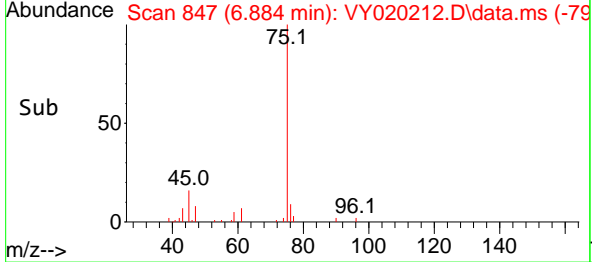
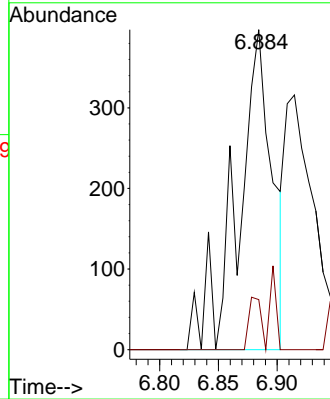
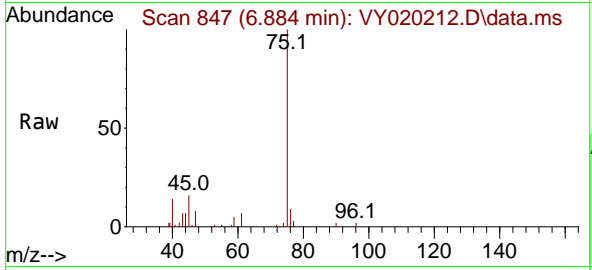




#25  
 2-Butanone  
 Concen: 1.355 ug/l  
 RT: 6.884 min Scan# 847  
 Delta R.T. -0.006 min  
 Lab File: VY020212.D  
 Acq: 07 Nov 2024 17:17

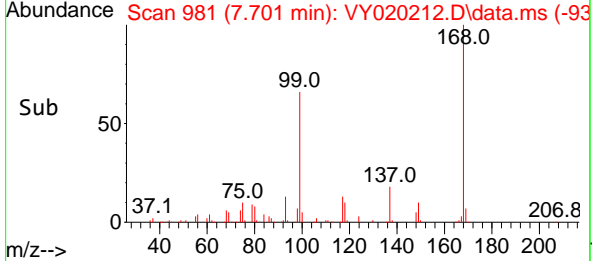
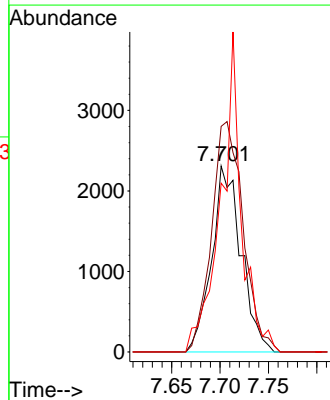
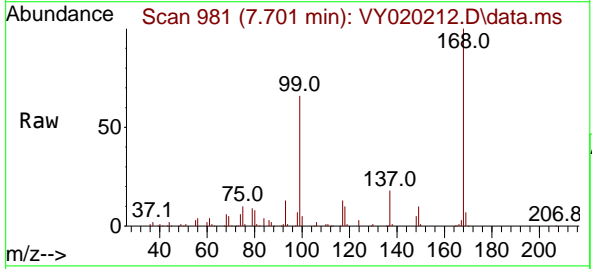
Instrument :  
 MSVOA\_Y  
 ClientSampleId :

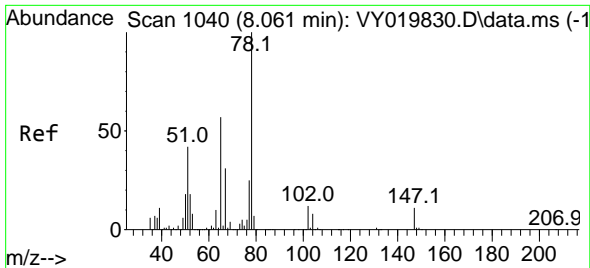
Tgt Ion: 43 Resp: 813  
 Ion Ratio Lower Upper  
 43 100  
 72 15.6 27.3 40.9#



#31  
 Cyclohexane  
 Concen: 1.412 ug/l  
 RT: 7.701 min Scan# 981  
 Delta R.T. 0.000 min  
 Lab File: VY020212.D  
 Acq: 07 Nov 2024 17:17

Tgt Ion: 56 Resp: 4878  
 Ion Ratio Lower Upper  
 56 100  
 69 121.3 28.7 43.1#  
 84 90.7 77.7 116.5

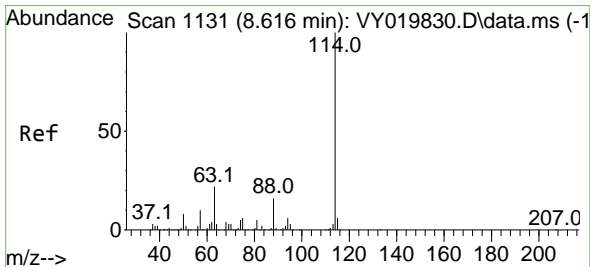
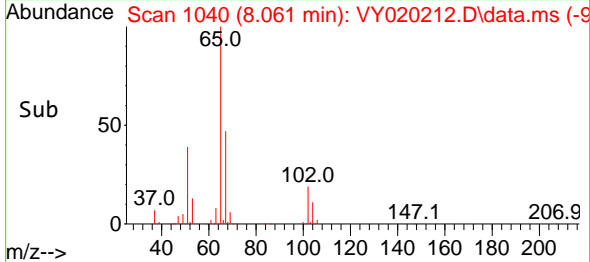
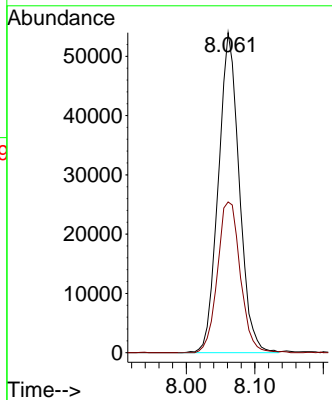
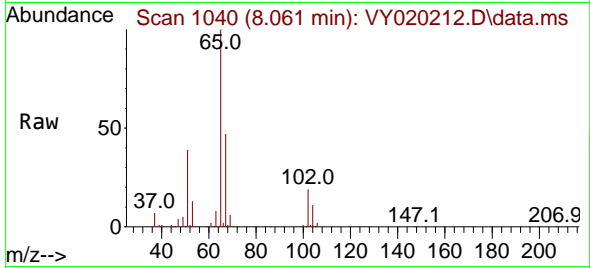




#33  
 1,2-Dichloroethane-d4  
 Concen: 59.995 ug/l  
 RT: 8.061 min Scan# 1040  
 Delta R.T. 0.000 min  
 Lab File: VY020212.D  
 Acq: 07 Nov 2024 17:17

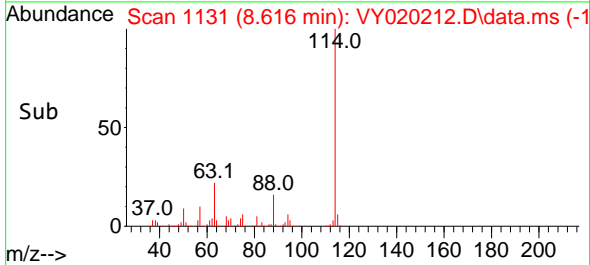
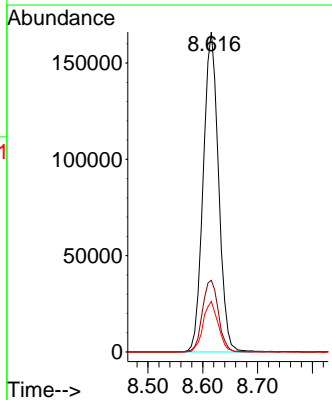
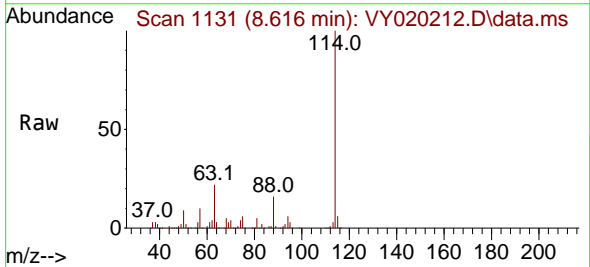
Instrument : MSVOA\_Y  
 ClientSampleId :

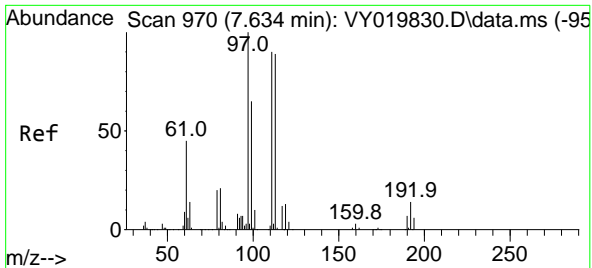
Tgt Ion: 65 Resp: 114208  
 Ion Ratio Lower Upper  
 65 100  
 67 51.4 0.0 109.6



#34  
 1,4-Difluorobenzene  
 Concen: 50.000 ug/l  
 RT: 8.616 min Scan# 1131  
 Delta R.T. 0.000 min  
 Lab File: VY020212.D  
 Acq: 07 Nov 2024 17:17

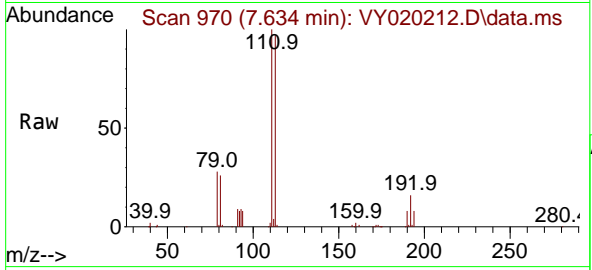
Tgt Ion: 114 Resp: 321278  
 Ion Ratio Lower Upper  
 114 100  
 63 22.4 0.0 35.0  
 88 15.8 0.0 27.2



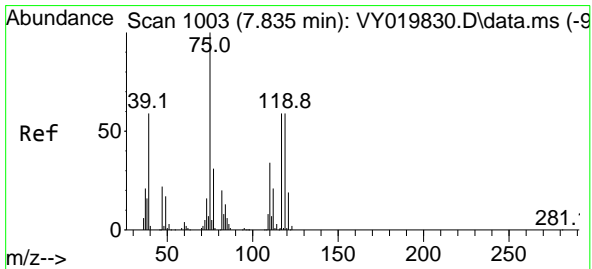
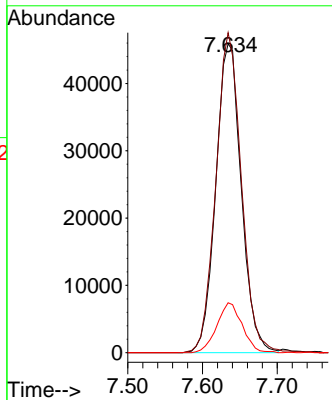
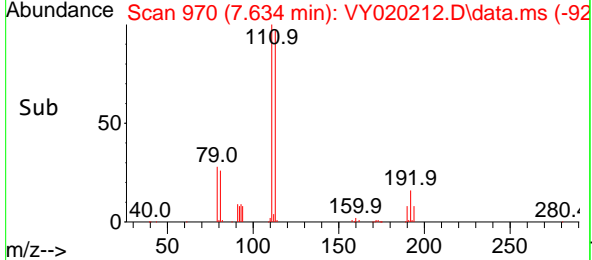


#35  
 Dibromofluoromethane  
 Concen: 53.289 ug/l  
 RT: 7.634 min Scan# 91  
 Delta R.T. 0.000 min  
 Lab File: VY020212.D  
 Acq: 07 Nov 2024 17:17

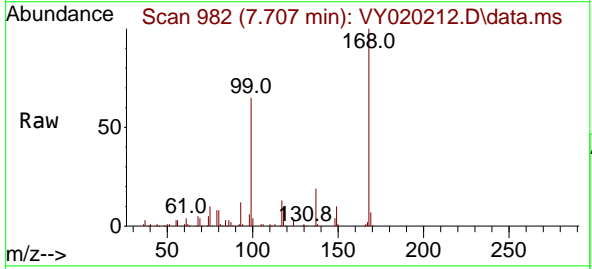
Instrument :  
 MSVOA\_Y  
 ClientSampleId :



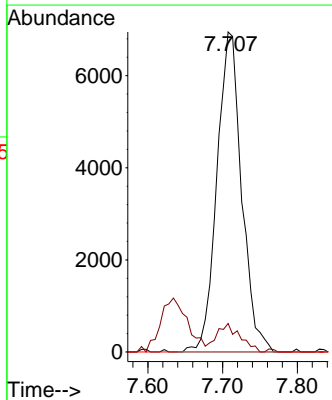
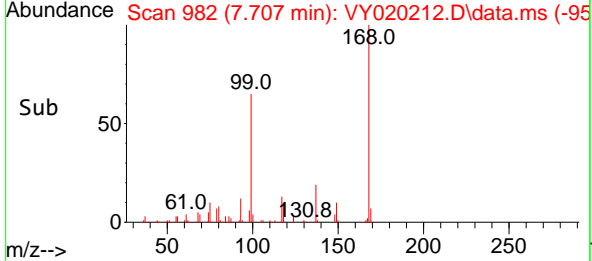
Tgt Ion:113 Resp: 108851  
 Ion Ratio Lower Upper  
 113 100  
 111 103.7 82.2 123.4  
 192 16.1 15.9 23.9

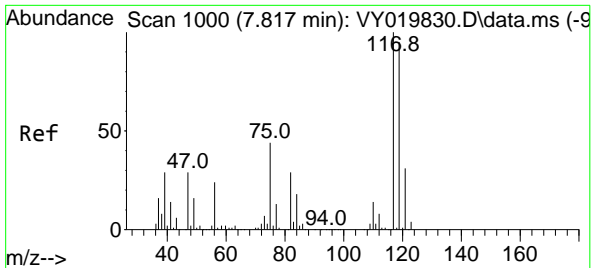


#36  
 1,1-Dichloropropene  
 Concen: 5.055 ug/l  
 RT: 7.707 min Scan# 982  
 Delta R.T. -0.128 min  
 Lab File: VY020212.D  
 Acq: 07 Nov 2024 17:17



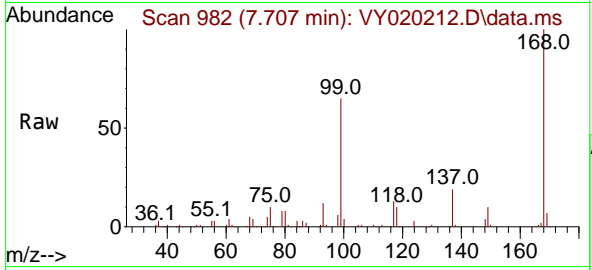
Tgt Ion: 75 Resp: 15950  
 Ion Ratio Lower Upper  
 75 100  
 110 8.4 19.0 57.0#  
 77 0.0 25.3 37.9#



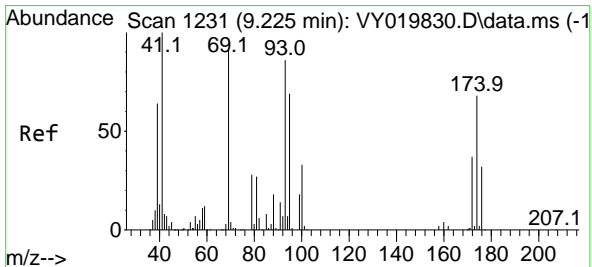
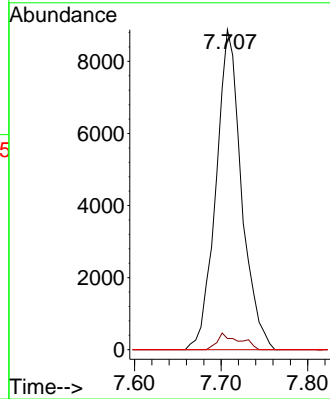
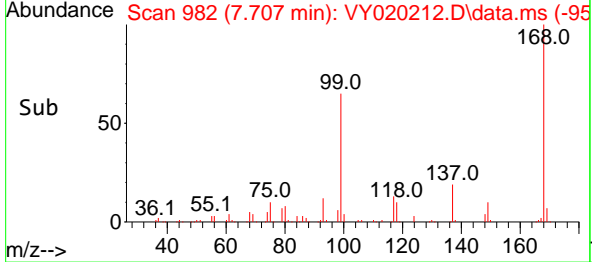


#38  
 Carbon Tetrachloride  
 Concen: 5.740 ug/l  
 RT: 7.707 min Scan# 91  
 Delta R.T. -0.109 min  
 Lab File: VY020212.D  
 Acq: 07 Nov 2024 17:17

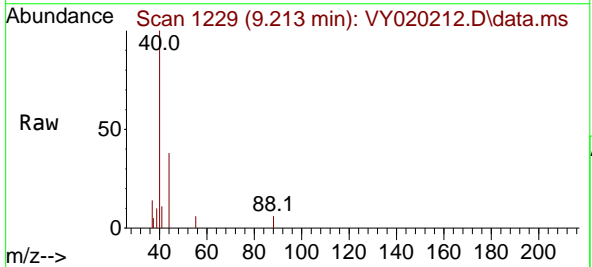
Instrument :  
 MSVOA\_Y  
 ClientSampleId :



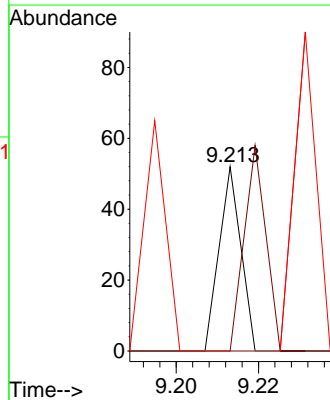
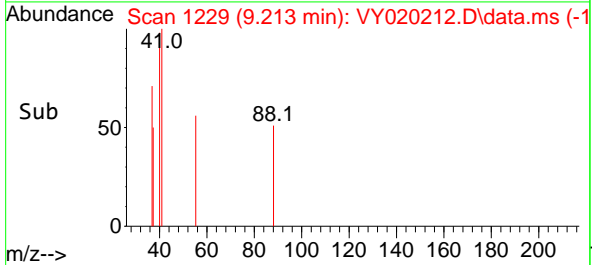
Tgt Ion: 117 Resp: 18215  
 Ion Ratio Lower Upper  
 117 100  
 119 3.5 75.8 113.6#  
 121 0.0 24.0 36.0#



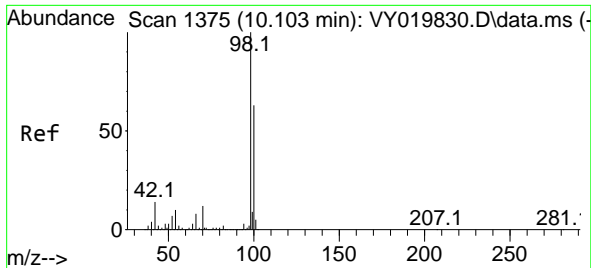
#49  
 1,4-Dioxane  
 Concen: 1.546 ug/l  
 RT: 9.213 min Scan# 1229  
 Delta R.T. -0.018 min  
 Lab File: VY020212.D  
 Acq: 07 Nov 2024 17:17



Tgt Ion: 88 Resp: 19  
 Ion Ratio Lower Upper  
 88 100  
 43 110.5 0.0 0.0#  
 58 173.7 49.3 73.9#

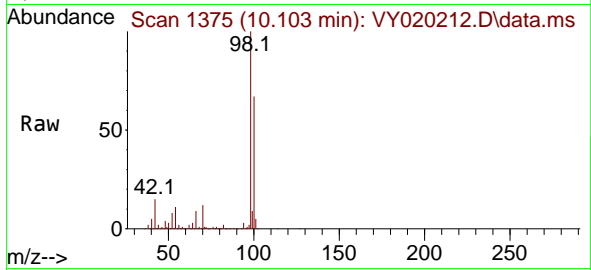




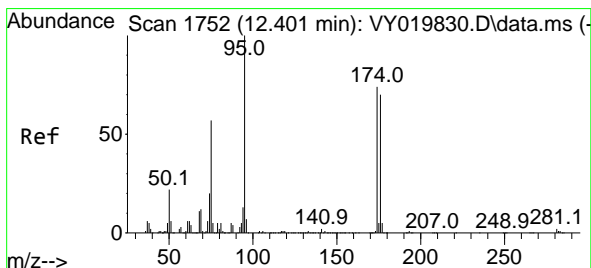
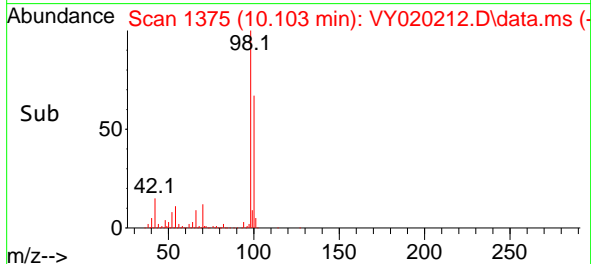
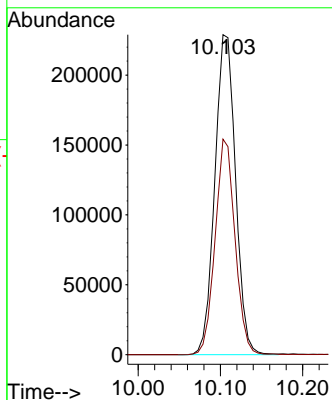


#50  
 Toluene-d8  
 Concen: 49.341 ug/l  
 RT: 10.103 min Scan# 11  
 Delta R.T. -0.006 min  
 Lab File: VY020212.D  
 Acq: 07 Nov 2024 17:17

Instrument :  
 MSVOA\_Y  
 ClientSampleId :

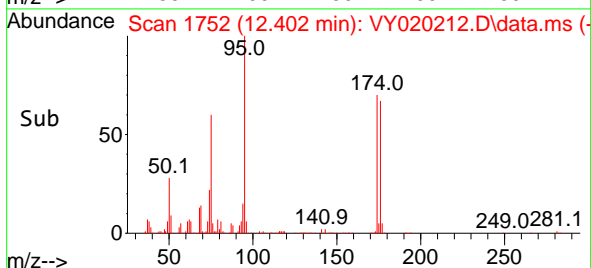
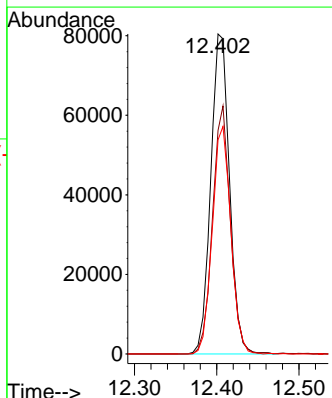
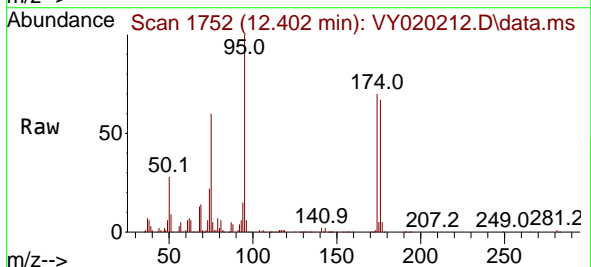


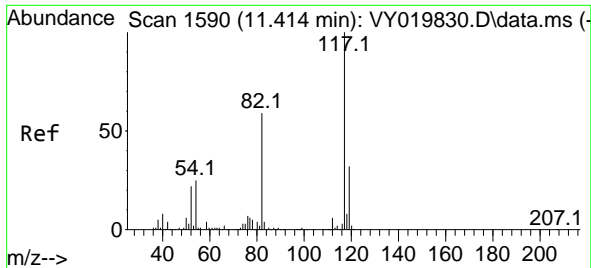
Tgt Ion: 98 Resp: 401186  
 Ion Ratio Lower Upper  
 98 100  
 100 64.9 52.0 78.0



#62  
 4-Bromofluorobenzene  
 Concen: 48.240 ug/l  
 RT: 12.402 min Scan# 1752  
 Delta R.T. -0.006 min  
 Lab File: VY020212.D  
 Acq: 07 Nov 2024 17:17

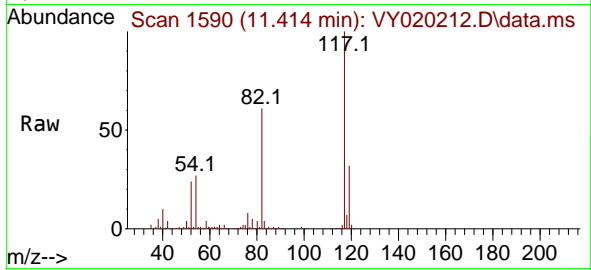
Tgt Ion: 95 Resp: 127400  
 Ion Ratio Lower Upper  
 95 100  
 174 74.0 0.0 175.6  
 176 70.4 0.0 171.4





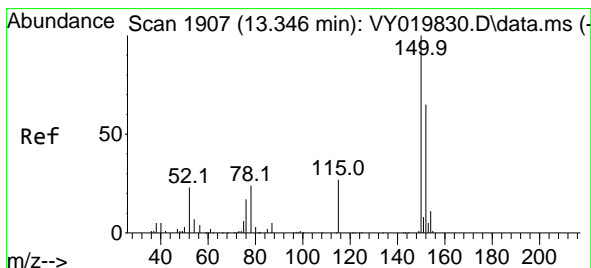
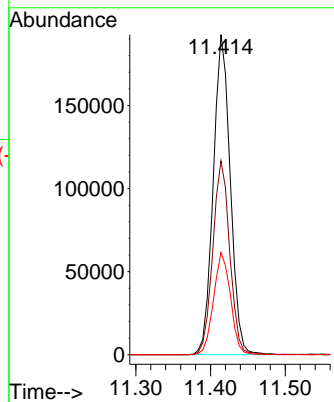
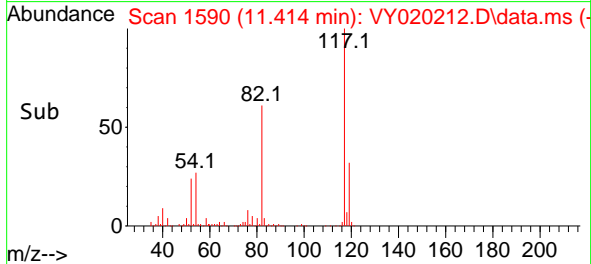
#63  
 Chlorobenzene-d5  
 Concen: 50.000 ug/l  
 RT: 11.414 min Scan# 11  
 Delta R.T. -0.006 min  
 Lab File: VY020212.D  
 Acq: 07 Nov 2024 17:17

Instrument :  
 MSVOA\_Y  
 ClientSampleId :

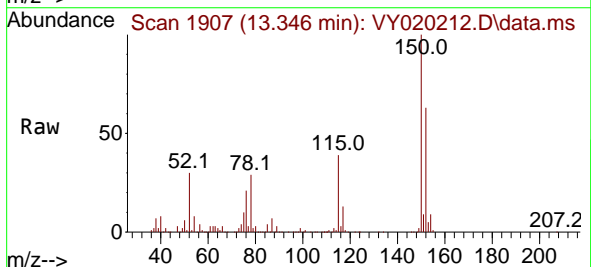


Tgt Ion:117 Resp: 305388

Ion	Ratio	Lower	Upper
117	100		
82	60.6	42.4	63.6
119	31.9	25.9	38.9

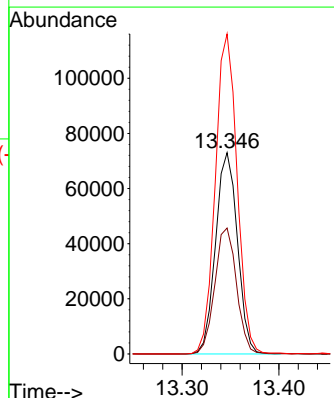
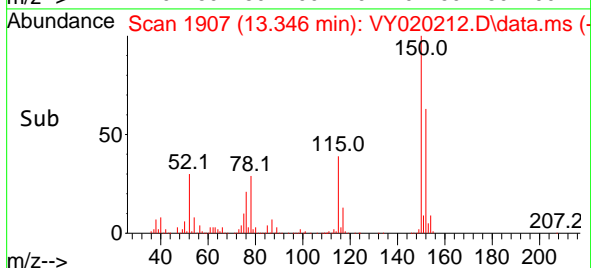


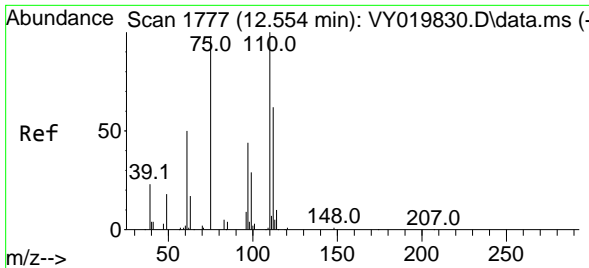
#72  
 1,4-Dichlorobenzene-d4  
 Concen: 50.000 ug/l  
 RT: 13.346 min Scan# 1907  
 Delta R.T. 0.000 min  
 Lab File: VY020212.D  
 Acq: 07 Nov 2024 17:17



Tgt Ion:152 Resp: 114309

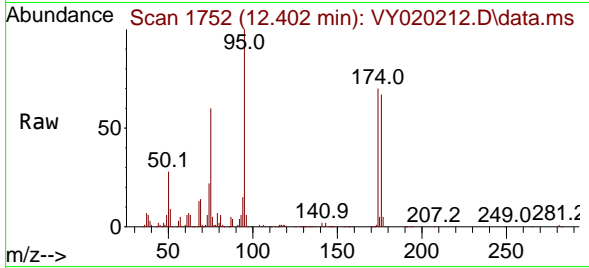
Ion	Ratio	Lower	Upper
152	100		
115	62.5	28.2	84.7
150	158.4	0.0	345.6



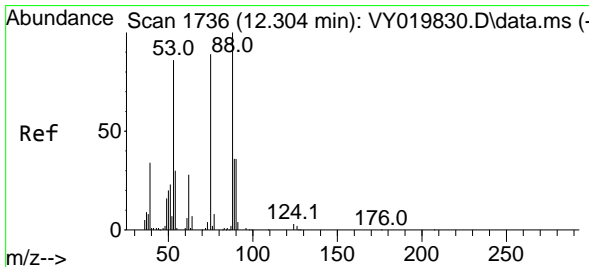
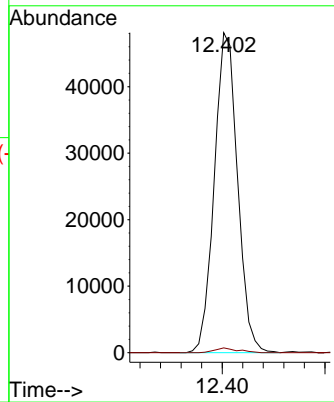
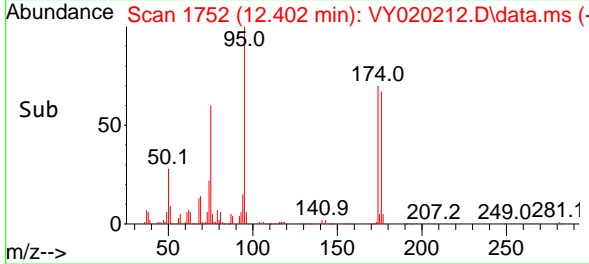


#76  
 1,2,3-Trichloropropane  
 Concen: 70.477 ug/l  
 RT: 12.402 min Scan# 1752  
 Delta R.T. -0.158 min  
 Lab File: VY020212.D  
 Acq: 07 Nov 2024 17:17

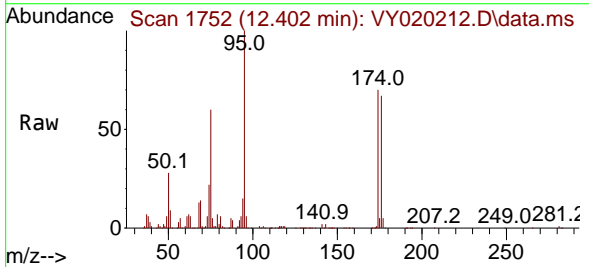
Instrument :  
 MSVOA\_Y  
 ClientSampleId :



Tgt Ion: 75 Resp: 75518  
 Ion Ratio Lower Upper  
 75 100  
 77 1.5 0.0 0.0#



#81  
 trans-1,4-Dichloro-2-butene  
 Concen: 151.594 ug/l  
 RT: 12.402 min Scan# 1752  
 Delta R.T. 0.098 min  
 Lab File: VY020212.D  
 Acq: 07 Nov 2024 17:17



Tgt Ion: 75 Resp: 75518  
 Ion Ratio Lower Upper  
 75 100  
 53 0.0 66.8 100.2#  
 89 0.0 35.8 53.6#

