

Data Path : Z:\voasrv\HPCHEM1\MSVOA_Y\Data\VY110724\
 Data File : VY020218.D
 Acq On : 07 Nov 2024 19:38
 Operator : SY/MD
 Sample : P4732-01
 Misc : 5.05g/5.0mL/MSVOA_Y/SOIL/A
 ALS Vial : 24 Sample Multiplier: 1

Instrument :
 MSVOA_Y
 ClientSampleId :
 PPE-COMP

Quant Time: Nov 08 00:33:08 2024
 Quant Method : Z:\voasrv\HPCHEM1\MSVOA_Y\methods\82Y103024S.M
 Quant Title : SW846 8260
 QLast Update : Thu Oct 31 15:23:13 2024
 Response via : Initial Calibration

Compound	R.T.	QIon	Response	Conc	Units	Dev(Min)

Internal Standards						
1) Pentafluorobenzene	7.707	168	2748	50.000	ug/l	0.00
34) 1,4-Difluorobenzene	8.622	114	4959	50.000	ug/l	0.00
63) Chlorobenzene-d5	11.420	117	2990	50.000	ug/l	# 0.00
72) 1,4-Dichlorobenzene-d4	13.352	152	465	50.000	ug/l	0.00
System Monitoring Compounds						
33) 1,2-Dichloroethane-d4	8.067	65	2350	68.519	ug/l	0.00
Spiked Amount	50.000	Range 50 - 163	Recovery	=	137.040%	
35) Dibromofluoromethane	7.622	113	1615	51.223	ug/l	-0.01
Spiked Amount	50.000	Range 54 - 147	Recovery	=	102.440%	
50) Toluene-d8	10.109	98	5639	44.932	ug/l	0.00
Spiked Amount	50.000	Range 58 - 134	Recovery	=	89.860%	
62) 4-Bromofluorobenzene	12.408	95	1048	25.709	ug/l	0.00
Spiked Amount	50.000	Range 29 - 146	Recovery	=	51.420%	

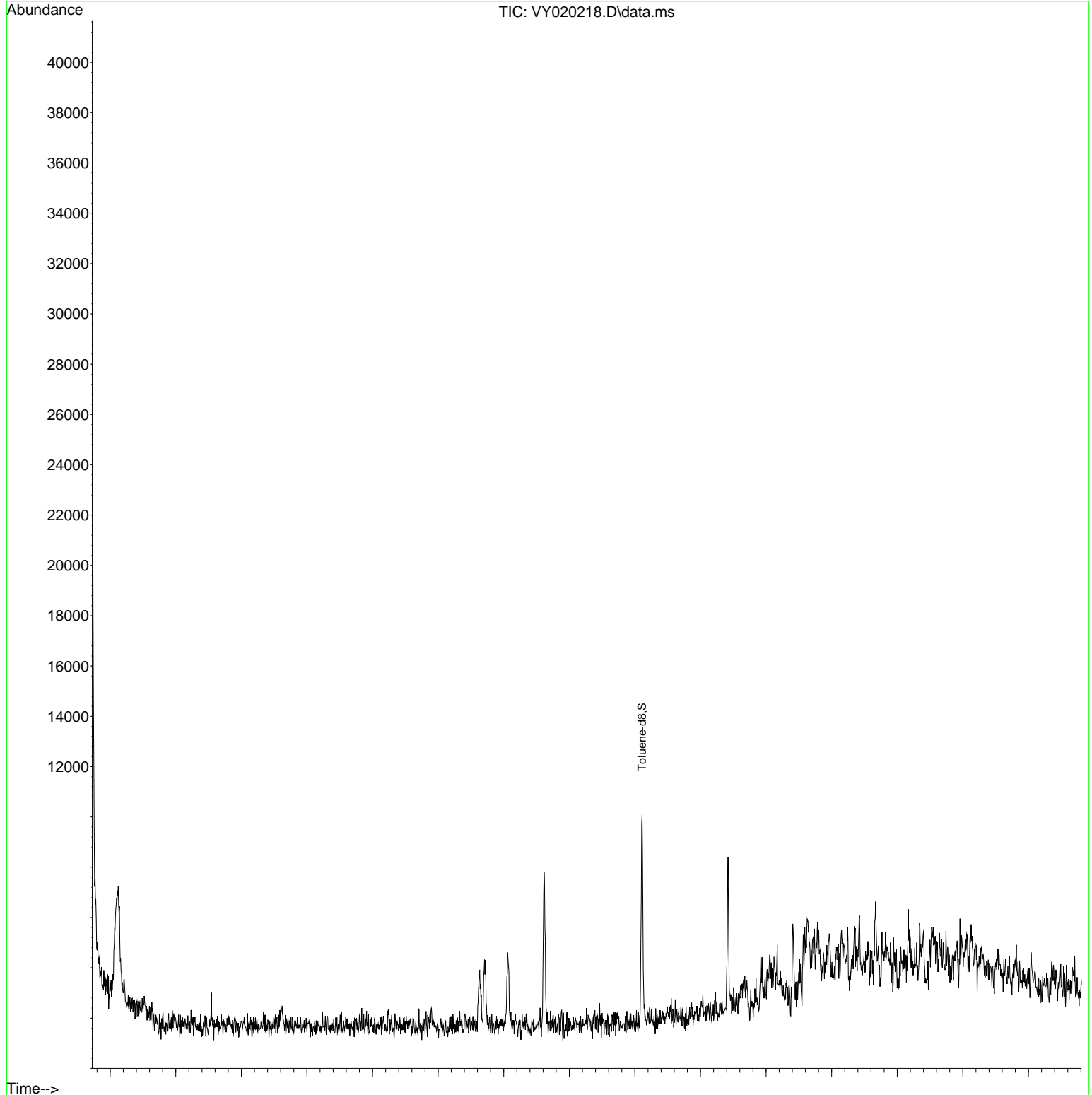
Target Compounds Qvalue

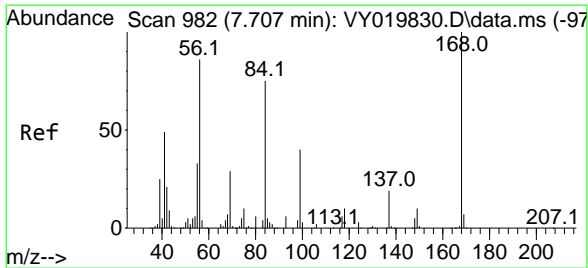
(#) = qualifier out of range (m) = manual integration (+) = signals summed

Data Path : Z:\voasrv\HPCHEM1\MSVOA_Y\Data\VY110724\
Data File : VY020218.D
Acq On : 07 Nov 2024 19:38
Operator : SY/MD
Sample : P4732-01
Misc : 5.05g/5.0mL/MSVOA_Y/SOIL/A
ALS Vial : 24 Sample Multiplier: 1

Instrument :
MSVOA_Y
ClientSampleId :
PPE-COMP

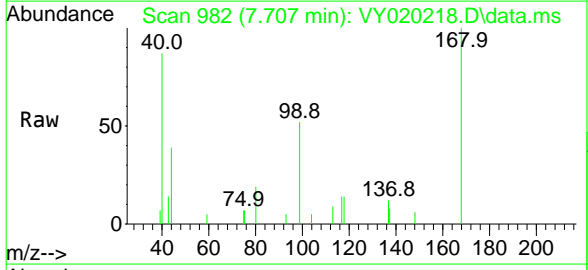
Quant Time: Nov 08 00:33:08 2024
Quant Method : Z:\voasrv\HPCHEM1\MSVOA_Y\methods\82Y103024S.M
Quant Title : SW846 8260
QLast Update : Thu Oct 31 15:23:13 2024
Response via : Initial Calibration



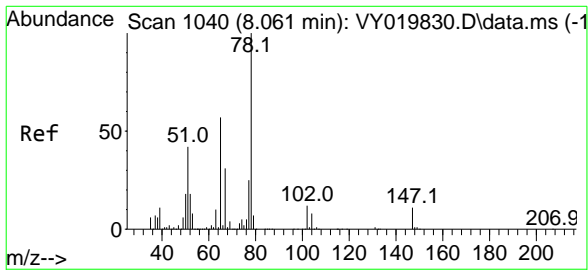
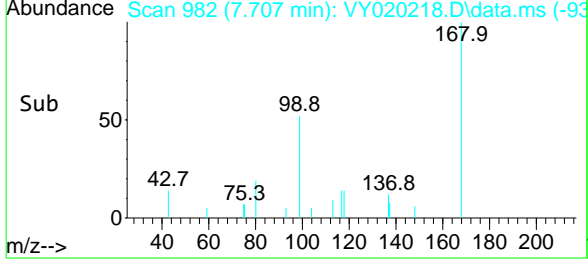
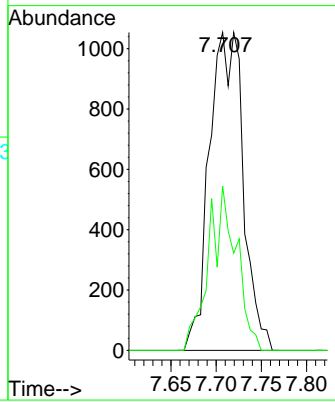


#1
 Pentafluorobenzene
 Concen: 50.000 ug/l
 RT: 7.707 min Scan# 98
 Delta R.T. 0.000 min
 Lab File: VY020218.D
 Acq: 07 Nov 2024 19:38

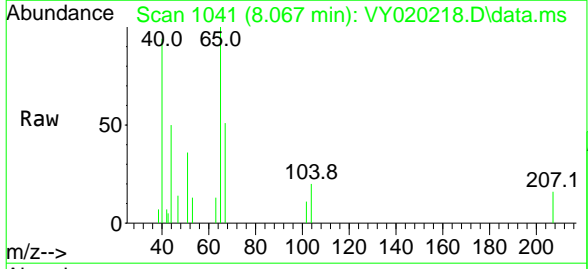
Instrument : MSVOA_Y
 ClientSampleId : PPE-COMP



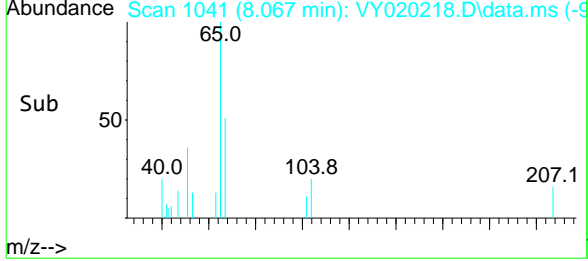
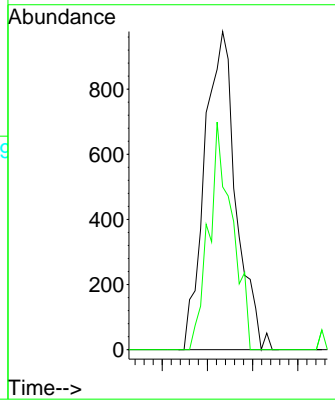
Tgt Ion: 168 Resp: 2748
 Ion Ratio Lower Upper
 168 100
 99 51.7 39.1 58.7

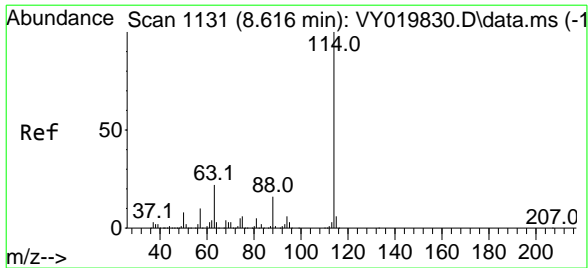


#33
 1,2-Dichloroethane-d4
 Concen: 68.519 ug/l
 RT: 8.067 min Scan# 1041
 Delta R.T. 0.006 min
 Lab File: VY020218.D
 Acq: 07 Nov 2024 19:38



Tgt Ion: 65 Resp: 2350
 Ion Ratio Lower Upper
 65 100
 67 53.4 0.0 109.6

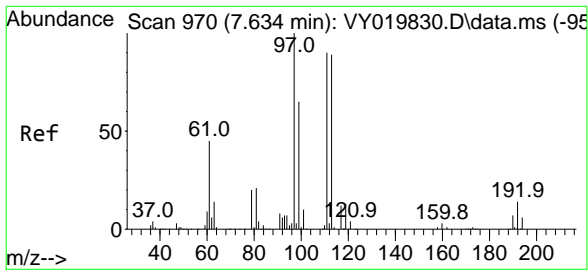
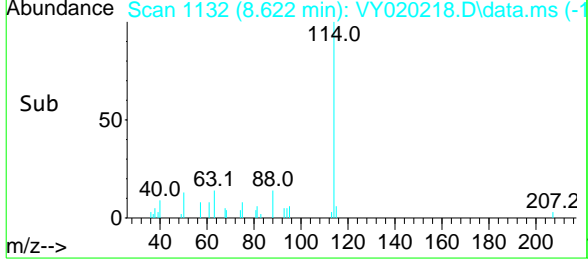
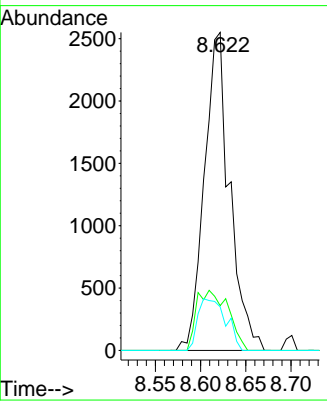
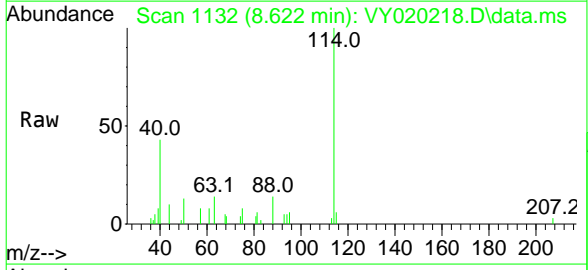




#34
 1,4-Difluorobenzene
 Concen: 50.000 ug/l
 RT: 8.622 min Scan# 11
 Delta R.T. 0.006 min
 Lab File: VY020218.D
 Acq: 07 Nov 2024 19:38

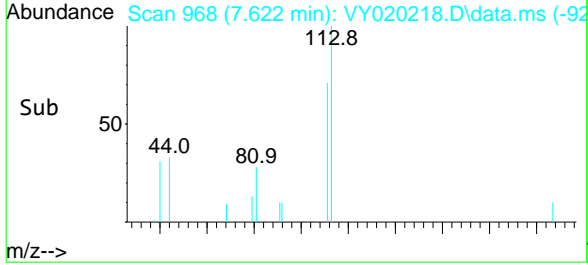
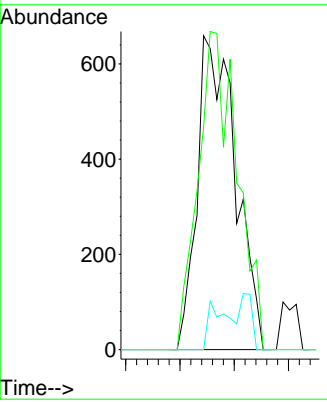
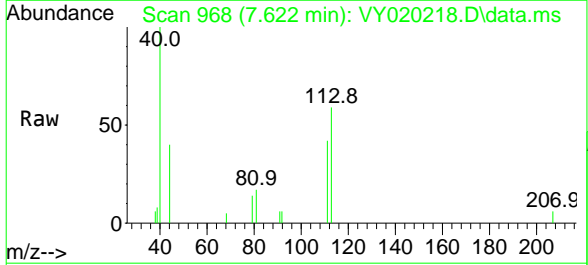
Instrument : MSVOA_Y
 ClientSampleId : PPE-COMP

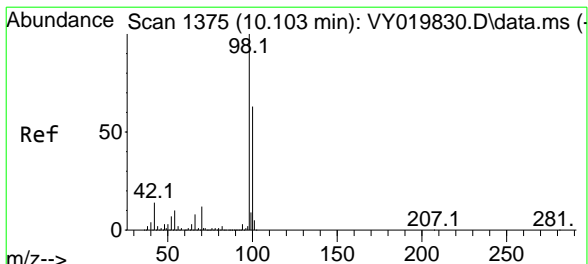
Tgt Ion	Resp	Lower	Upper
114	4959		
63	14.1	0.0	35.0
88	13.7	0.0	27.2



#35
 Dibromofluoromethane
 Concen: 51.223 ug/l
 RT: 7.622 min Scan# 968
 Delta R.T. -0.012 min
 Lab File: VY020218.D
 Acq: 07 Nov 2024 19:38

Tgt Ion	Resp	Lower	Upper
113	1615		
111	103.3	82.2	123.4
192	7.1	15.9	23.9

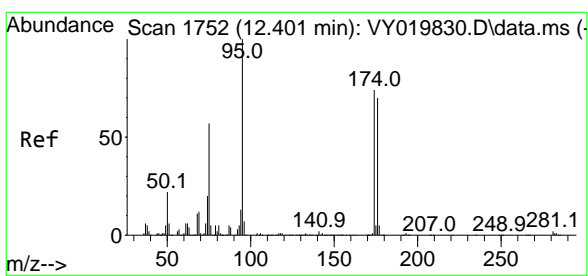
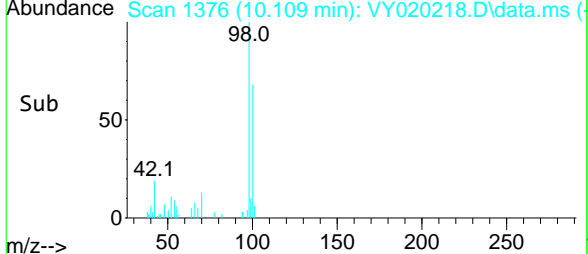
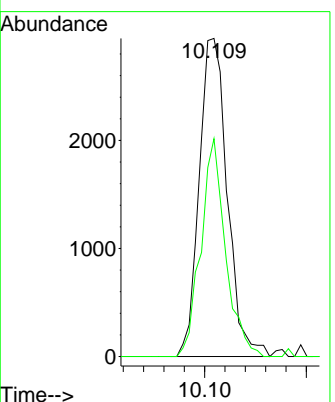
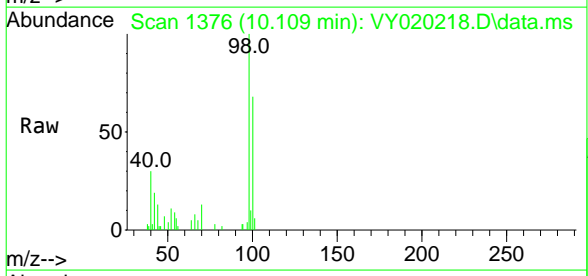




#50
 Toluene-d8
 Concen: 44.932 ug/l
 RT: 10.109 min Scan# 1375
 Delta R.T. 0.000 min
 Lab File: VY020218.D
 Acq: 07 Nov 2024 19:38

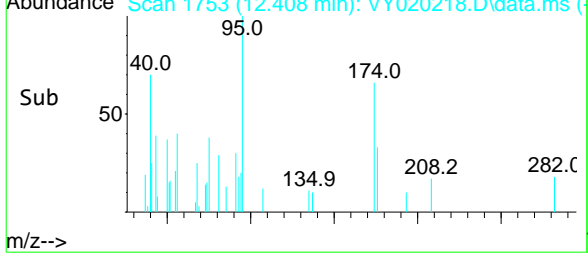
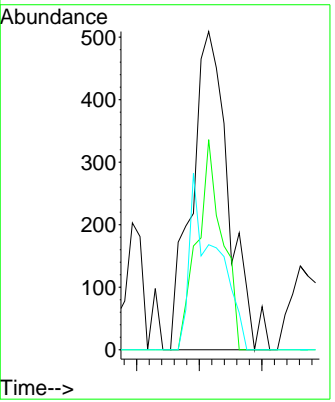
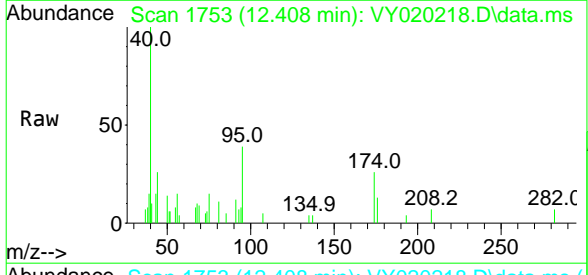
Instrument : MSVOA_Y
 ClientSampleId : PPE-COMP

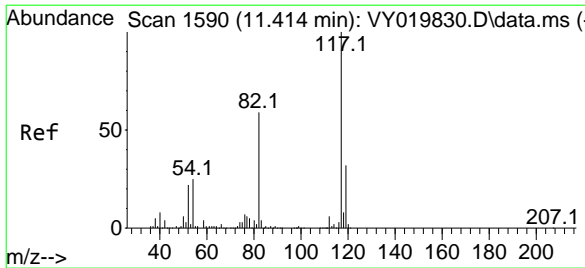
Tgt Ion: 98 Resp: 5639
 Ion Ratio Lower Upper
 98 100
 100 60.2 52.0 78.0



#62
 4-Bromofluorobenzene
 Concen: 25.709 ug/l
 RT: 12.408 min Scan# 1753
 Delta R.T. 0.000 min
 Lab File: VY020218.D
 Acq: 07 Nov 2024 19:38

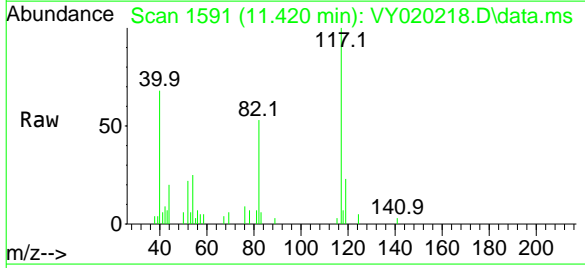
Tgt Ion: 95 Resp: 1048
 Ion Ratio Lower Upper
 95 100
 174 44.8 0.0 175.6
 176 39.5 0.0 171.4





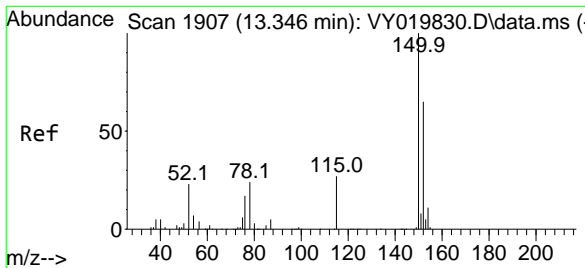
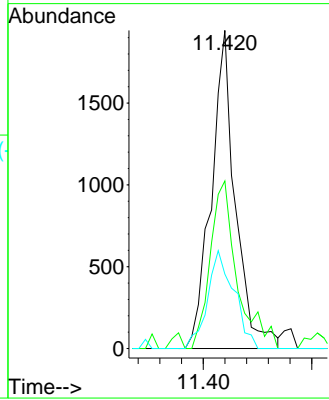
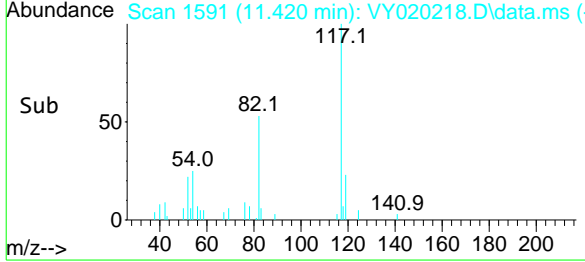
#63
 Chlorobenzene-d5
 Concen: 50.000 ug/l
 RT: 11.420 min Scan# 1590
 Delta R.T. 0.000 min
 Lab File: VY020218.D
 Acq: 07 Nov 2024 19:38

Instrument : MSVOA_Y
 ClientSampleId : PPE-COMP

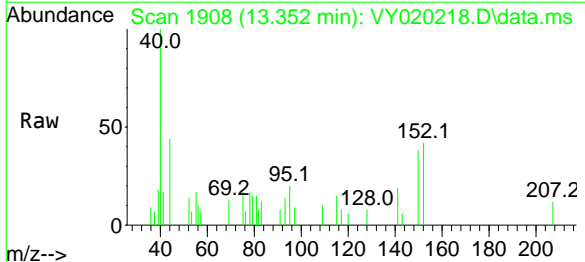


Tgt Ion: 117 Resp: 2990

Ion	Ratio	Lower	Upper
117	100		
82	52.7	42.4	63.6
119	23.4	25.9	38.9



#72
 1,4-Dichlorobenzene-d4
 Concen: 50.000 ug/l
 RT: 13.352 min Scan# 1908
 Delta R.T. 0.006 min
 Lab File: VY020218.D
 Acq: 07 Nov 2024 19:38



Tgt Ion: 152 Resp: 465

Ion	Ratio	Lower	Upper
152	100		
115	83.9	28.2	84.7
150	150.8	0.0	345.6

