

Data Path : Z:\voasrv\HPCHEM1\MSVOA_Y\Data\VY110724\
 Data File : VY020201.D
 Acq On : 07 Nov 2024 13:00
 Operator : SY/MD
 Sample : P4667-07
 Misc : 5.41g/5.0mL/MSVOA_Y/SOIL/B
 ALS Vial : 7 Sample Multiplier: 1

Instrument :
 MSVOA_Y
 ClientSampleId :
 BP-F-5-VOC

Integration Parameters: RTEINT.P
 Integrator: RTE
 Smoothing : ON
 Sampling : 1
 Start Thrs: 0.2
 Stop Thrs : 0
 Filtering: 5
 Min Area: 3 % of largest Peak
 Max Peaks: 100
 Peak Location: TOP

If leading or trailing edge < 100 prefer < Baseline drop else tangent >
 Peak separation: 5

Method : Z:\voasrv\HPCHEM1\MSVOA_Y\methods\82Y103024S.M
 Title : SW846 8260

Signal : TIC: VY020201.D\data.ms

| peak # | R.T. min | first scan | max scan | last scan | PK TY | peak height | corr. area | corr. % max. | % of total |
|--------|----------|------------|----------|-----------|-------|-------------|------------|--------------|------------|
| 1 | 4.623 | 466 | 476 | 482 | rBV4 | 4886 | 14262 | 1.24% | 0.244% |
| 2 | 6.890 | 837 | 848 | 859 | rBV2 | 15967 | 52826 | 4.59% | 0.902% |
| 3 | 7.634 | 960 | 970 | 976 | rBV2 | 155854 | 376581 | 32.71% | 6.431% |
| 4 | 7.707 | 976 | 982 | 999 | rVB | 219348 | 516421 | 44.85% | 8.820% |
| 5 | 8.067 | 1029 | 1041 | 1054 | rBV | 152619 | 343091 | 29.80% | 5.859% |
| 6 | 8.616 | 1122 | 1131 | 1143 | rBV | 414239 | 827688 | 71.89% | 14.135% |
| 7 | 10.103 | 1368 | 1375 | 1391 | rBV | 660454 | 1151320 | 100.00% | 19.662% |
| 8 | 10.512 | 1435 | 1442 | 1448 | rBV3 | 9893 | 18745 | 1.63% | 0.320% |
| 9 | 10.877 | 1495 | 1502 | 1512 | rBV2 | 17927 | 33368 | 2.90% | 0.570% |
| 10 | 11.414 | 1583 | 1590 | 1604 | rBV | 655169 | 1033107 | 89.73% | 17.644% |
| 11 | 12.341 | 1738 | 1742 | 1746 | rBV3 | 7845 | 13009 | 1.13% | 0.222% |
| 12 | 12.408 | 1746 | 1753 | 1760 | rVB | 425198 | 706579 | 61.37% | 12.067% |
| 13 | 13.347 | 1898 | 1907 | 1916 | rBV | 498007 | 768415 | 66.74% | 13.123% |

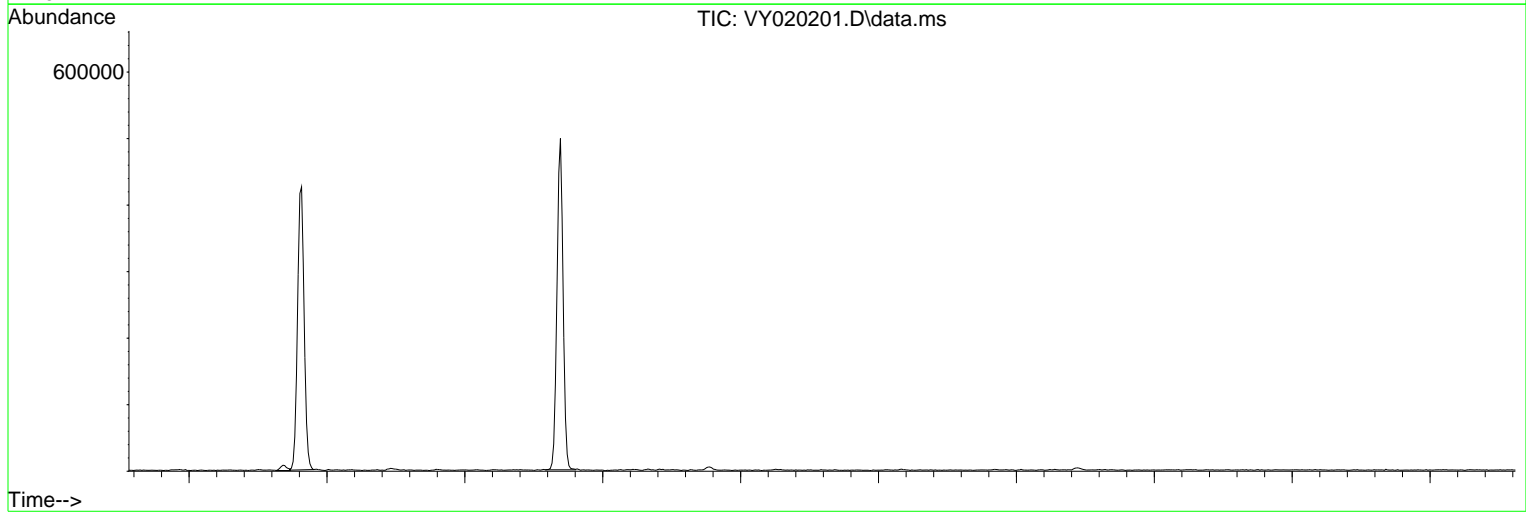
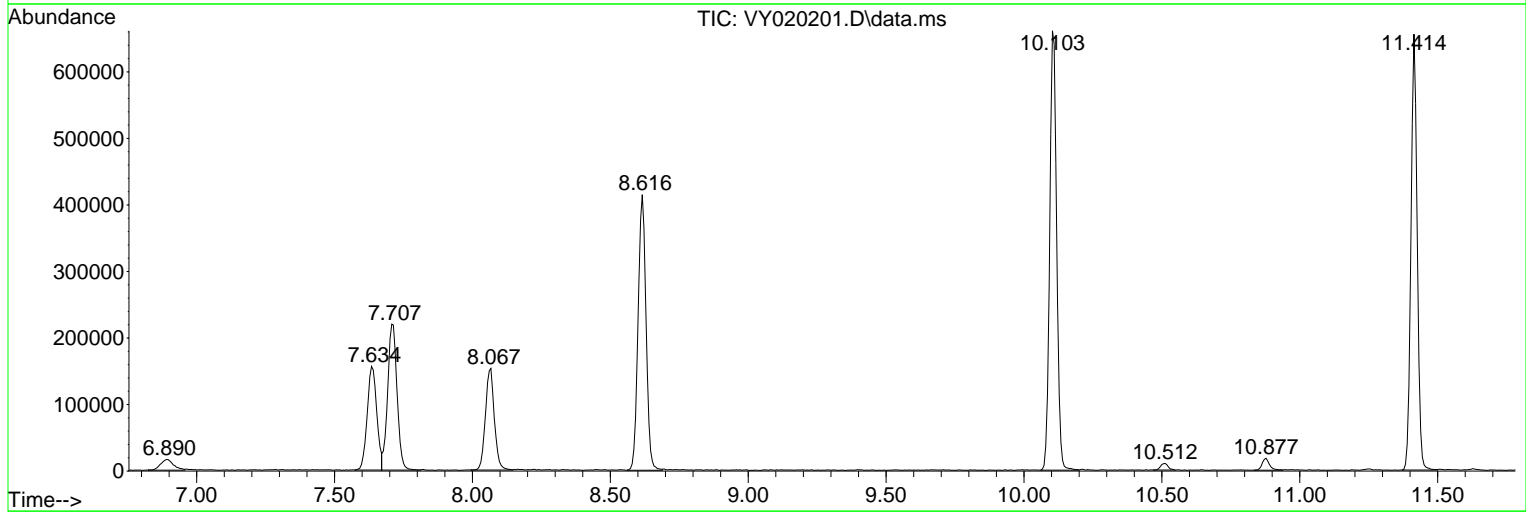
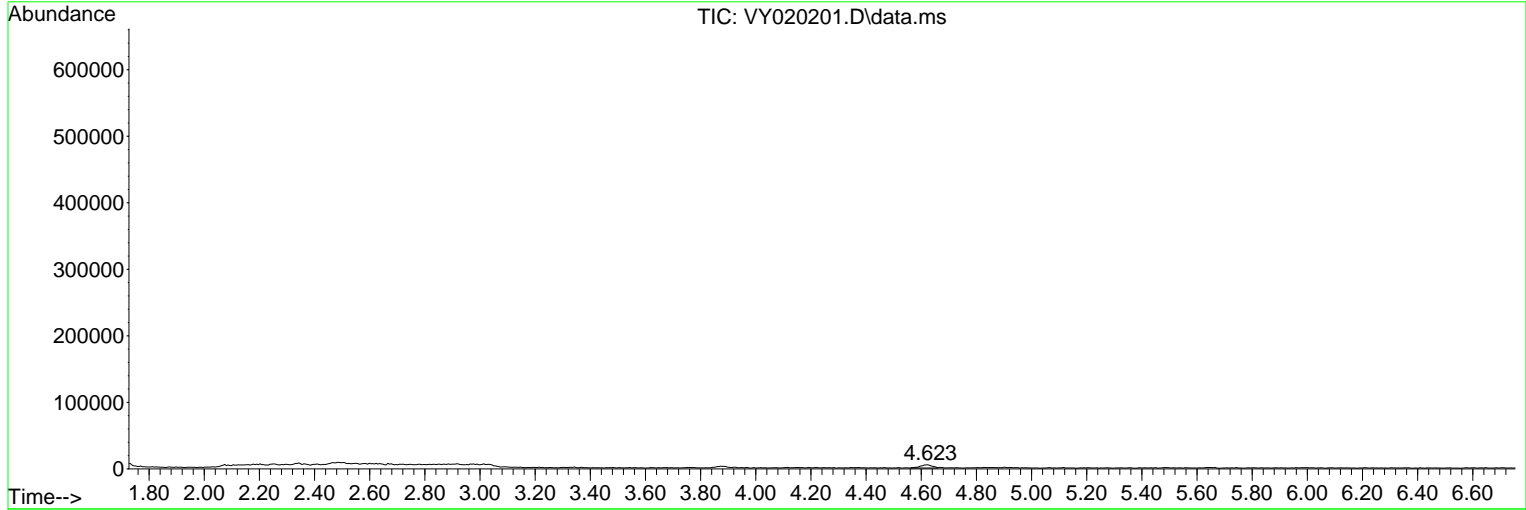
Sum of corrected areas: 5855412

Data Path : Z:\voasrv\HPCHEM1\MSVOA_Y\Data\VY110724\
Data File : VY020201.D
Acq On : 07 Nov 2024 13:00
Operator : SY/MD
Sample : P4667-07
Misc : 5.41g/5.0mL/MSVOA_Y/SOIL/B
ALS Vial : 7 Sample Multiplier: 1

Instrument :
MSVOA_Y
ClientSampleId :
BP-F-5-VOC

Quant Method : Z:\voasrv\HPCHEM1\MSVOA_Y\methods\82Y103024S.M
Quant Title : SW846 8260

TIC Library : C:\Database\NIST20.L
TIC Integration Parameters: LSCINT.P



Data Path : Z:\voasrv\HPCHEM1\MSVOA_Y\Data\VY110724\
 Data File : VY020201.D
 Acq On : 07 Nov 2024 13:00
 Operator : SY/MD
 Sample : P4667-07
 Misc : 5.41g/5.0mL/MSVOA_Y/SOIL/B
 ALS Vial : 7 Sample Multiplier: 1

Instrument :
 MSVOA_Y
 ClientSampleId :
 BP-F-5-VOC

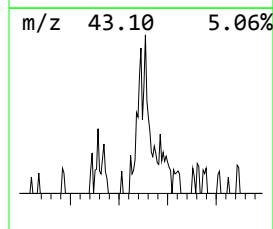
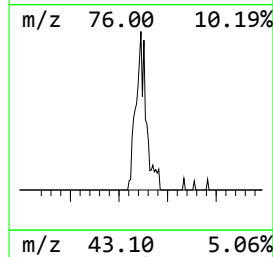
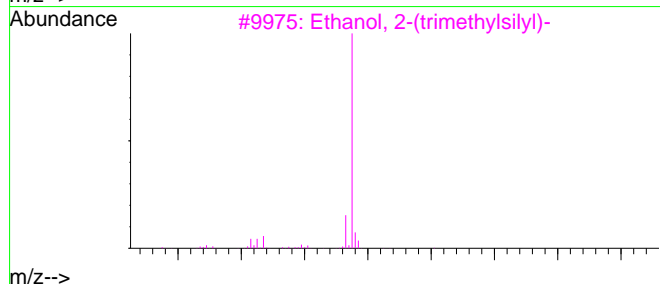
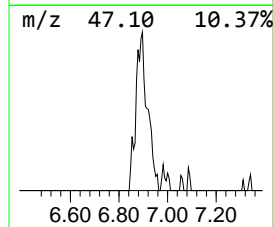
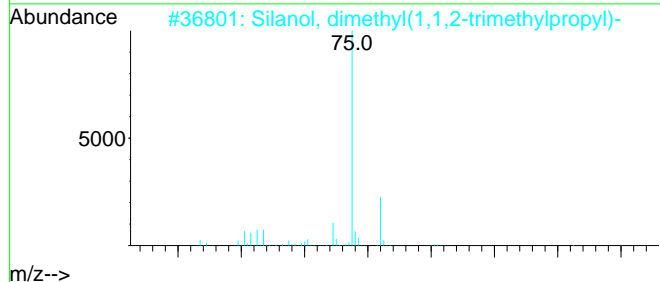
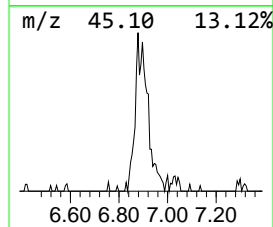
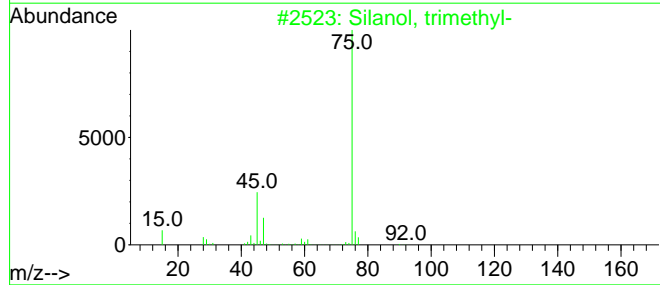
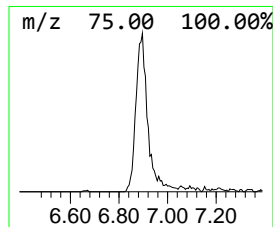
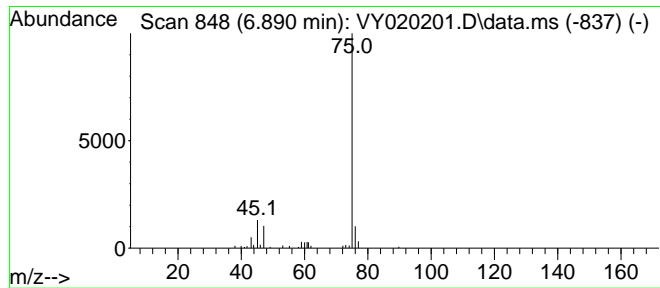
Quant Method : Z:\voasrv\HPCHEM1\MSVOA_Y\methods\82Y103024S.M
 Quant Title : SW846 8260

TIC Library : C:\Database\NIST20.L
 TIC Integration Parameters: LSCINT.P

 Peak Number 1 Silanol, trimethyl- Concentration Rank 1

| R.T. | EstConc | Area | Relative to ISTD | R.T. |
|-------|-----------|-------|--------------------|-------|
| 6.890 | 5.11 ug/l | 52826 | Pentafluorobenzene | 7.713 |

| Hit# of 5 | Tentative ID | MW | MolForm | CAS# | Qual |
|-----------|---------------------------------------|-----|----------|-------------|------|
| 1 | Silanol, trimethyl- | 90 | C3H10OSi | 001066-40-6 | 80 |
| 2 | Silanol, dimethyl(1,1,2-trimethyl...) | 160 | C8H20OSi | 055644-10-5 | 72 |
| 3 | Ethanol, 2-(trimethylsilyl)- | 118 | C5H14OSi | 002916-68-9 | 56 |
| 4 | Formamide, N-methylthio | 75 | C2H5NS | 018952-41-5 | 9 |
| 5 | Aminoacetaldehyde dimethyl acetal | 105 | C4H11NO2 | 022483-09-6 | 9 |



Data Path : Z:\voasrv\HPCHEM1\MSVOA_Y\Data\VY110724\
Data File : VY020201.D
Acq On : 07 Nov 2024 13:00
Operator : SY/MD
Sample : P4667-07
Misc : 5.41g/5.0mL/MSVOA_Y/SOIL/B
ALS Vial : 7 Sample Multiplier: 1

Instrument :
MSVOA_Y
ClientSampleId :
BP-F-5-VOC

Quant Method : Z:\voasrv\HPCHEM1\MSVOA_Y\methods\82Y103024S.M
Quant Title : SW846 8260

TIC Library : C:\Database\NIST0.L
TIC Integration Parameters: LSCINT.P

| TIC Top Hit name | RT | EstConc | Units | Response | --Internal Standard-- | | | |
|--------------------|-------|---------|-------|----------|-----------------------|-------|--------|-------|
| | | | | | # | RT | Resp | Conc |
| ----- | ----- | ----- | ----- | ----- | ----- | ----- | ----- | ----- |
| Silanol, trimet... | 6.890 | 5.1 | ug/l | 52826 | 1 | 7.713 | 516421 | 50.0 |