

Data Path : Z:\VOASRV\HPCHEM1\MSVOA Y\DATA\VY110819\
 Data File : VY000626.D
 Acq On : 08 Nov 2019 18:32
 Operator : SY/MD
 Sample : K5723-13RE
 Misc : 5.79G/5ML/MSVOA Y/SOIL
 ALS Vial : 23 Sample Multiplier: 1

Instrument :
 MSVOA_Y
 ClientSampleId :
 10-BRE

Quant Time: Nov 11 06:45:49 2019
 Quant Method : Z:\VOASRV\HPCHEM1\MSVOA_Y\METHODS\82Y103019S.M
 Quant Title : SW846 8260
 QLast Update : Wed Oct 30 13:30:53 2019
 Response via : Initial Calibration

Internal Standards	R.T.	QIon	Response	Conc	Units	Dev(Min)
1) Pentafluorobenzene	7.80	168	209641	50.00	ug/l	0.00
34) 1,4-Difluorobenzene	8.70	114	383514	50.00	ug/l	0.00
63) Chlorobenzene-d5	11.49	117	351998	50.00	ug/l	0.00
72) 1,4-Dichlorobenzene-d4	13.42	152	158974	50.00	ug/l	0.00

System Monitoring Compounds	R.T.	QIon	Response	Conc	Units	Dev(Min)
33) 1,2-Dichloroethane-d4	8.16	65	132367	61.01	ug/l	0.00
Spiked Amount				50.000		
Recovery						= 122.02%
35) Dibromofluoromethane	7.73	113	114573	50.89	ug/l	0.00
Spiked Amount				50.000		
Recovery						= 101.78%
50) Toluene-d8	10.19	98	444175	51.99	ug/l	0.00
Spiked Amount				50.000		
Recovery						= 103.98%
62) 4-Bromofluorobenzene	12.48	95	161685	49.71	ug/l	0.00
Spiked Amount				50.000		
Recovery						= 99.42%

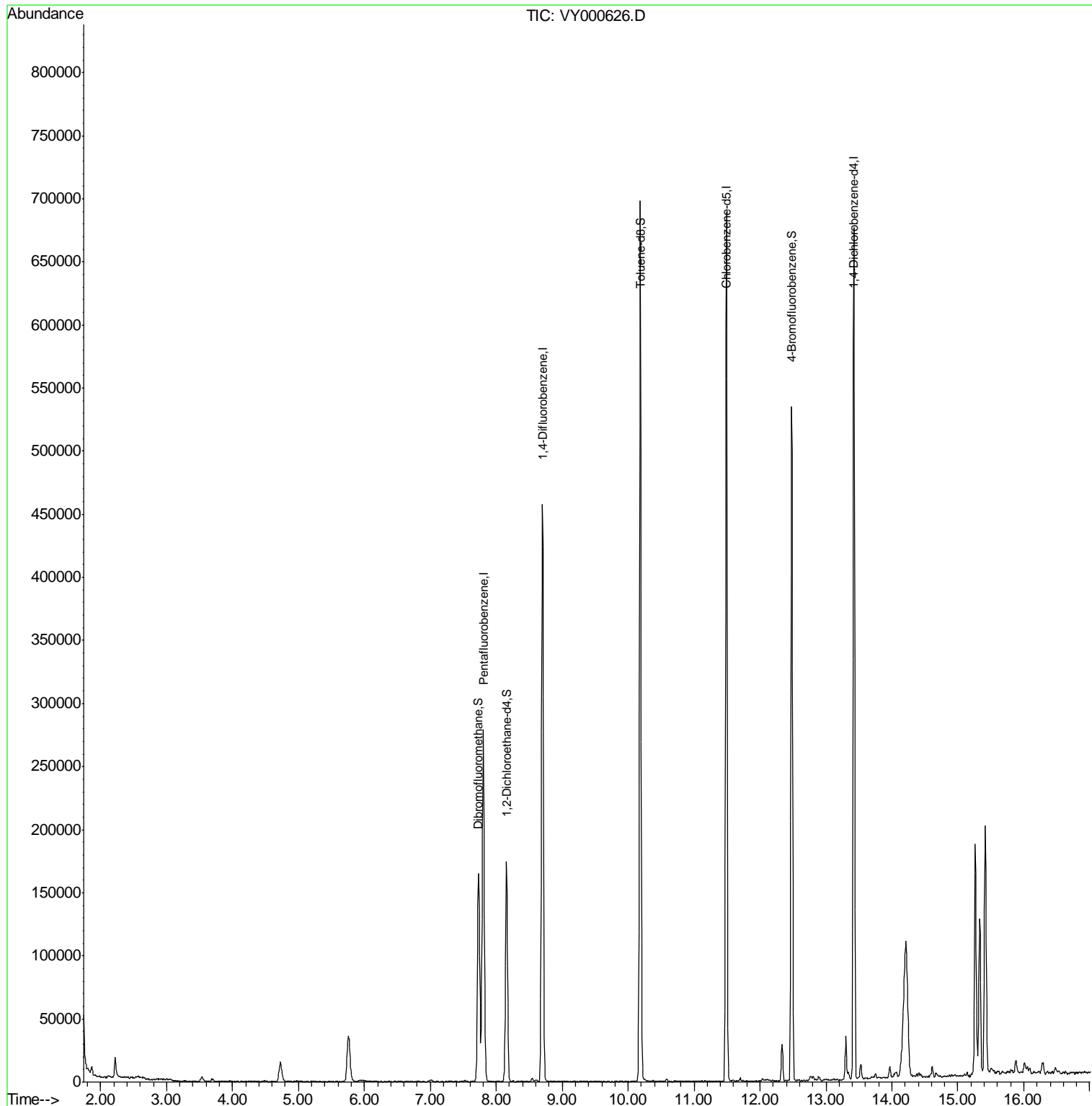
Target Compounds Qvalue

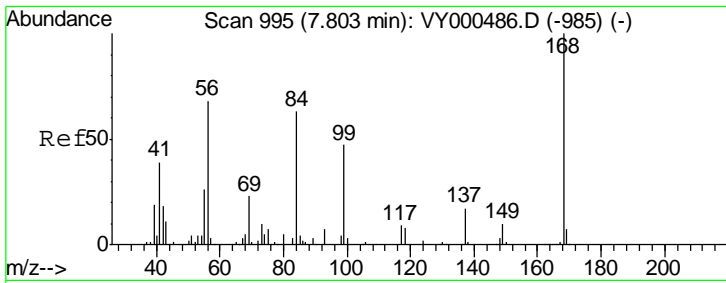
(#) = qualifier out of range (m) = manual integration (+) = signals summed

Data Path : Z:\VOASRV\HPCHEM1\MSVOA Y\DATA\VY110819\
 Data File : VY000626.D
 Acq On : 08 Nov 2019 18:32
 Operator : SY/MD
 Sample : K5723-13RE
 Misc : 5.79G/5ML/MSVOA Y/SOIL
 ALS Vial : 23 Sample Multiplier: 1

Instrument :
 MSVOA_Y
 ClientSampled :
 10-BRE

Quant Time: Nov 11 06:45:49 2019
 Quant Method : Z:\VOASRV\HPCHEM1\MSVOA_Y\METHODS\82Y103019S.M
 Quant Title : SW846 8260
 QLast Update : Wed Oct 30 13:30:53 2019
 Response via : Initial Calibration

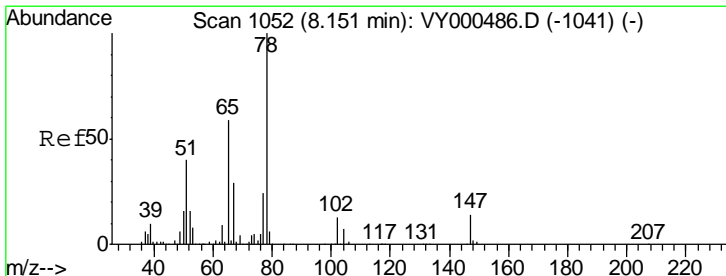
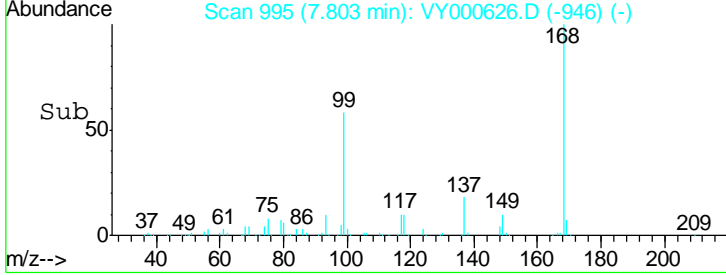
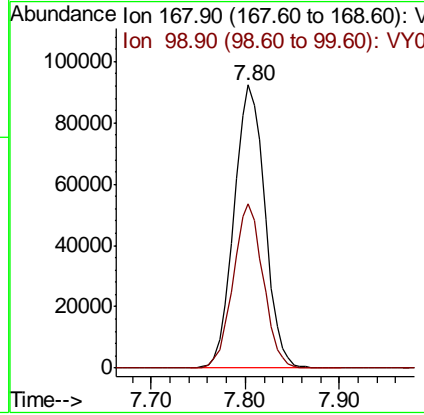
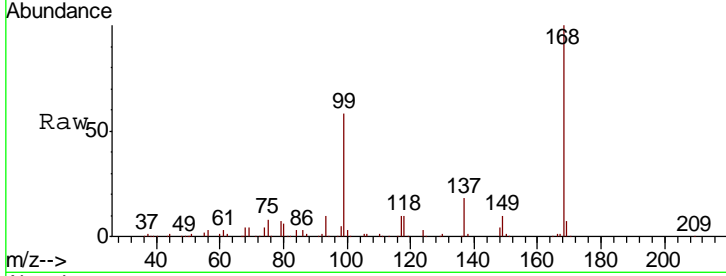




#1
 Pentafluorobenzene
 Concen: 50.000 ug/l
 RT: 7.80 min Scan# 995
 Delta R.T. -0.00 min
 Lab File: VY000626.D
 Acq: 08 Nov 2019 18:32

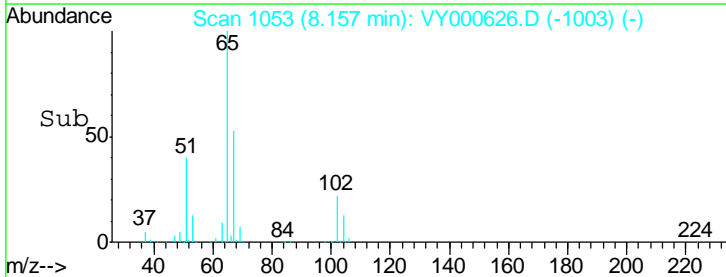
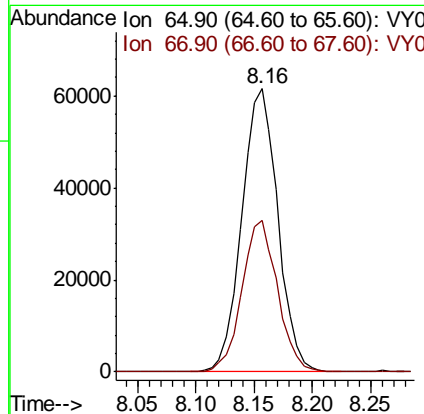
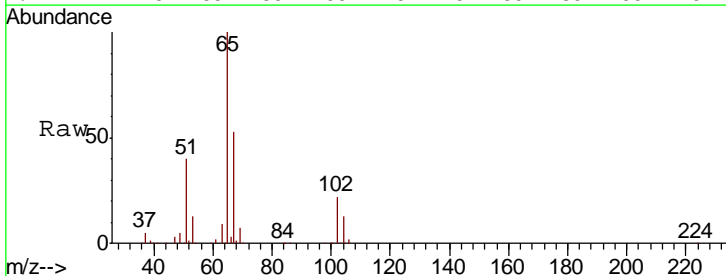
Instrument :
 MSVOA_Y
 ClientSampled :
 10-BRE

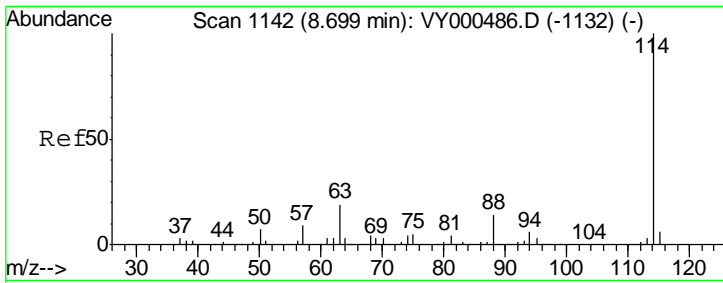
Tgt Ion: 168 Resp: 209641
 Ion Ratio Lower Upper
 168 100
 99 58.1 45.7 68.5



#33
 1,2-Dichloroethane-d4
 Concen: 61.012 ug/l
 RT: 8.16 min Scan# 1053
 Delta R.T. 0.01 min
 Lab File: VY000626.D
 Acq: 08 Nov 2019 18:32

Tgt Ion: 65 Resp: 132367
 Ion Ratio Lower Upper
 65 100
 67 52.8 0.0 107.2

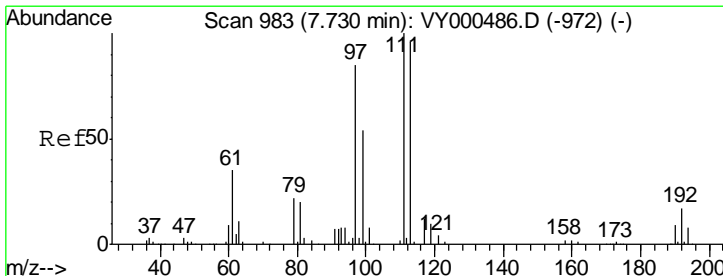
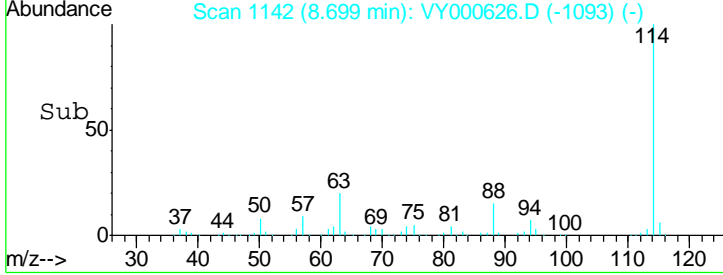
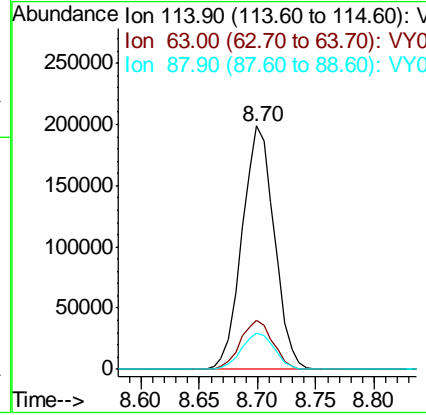
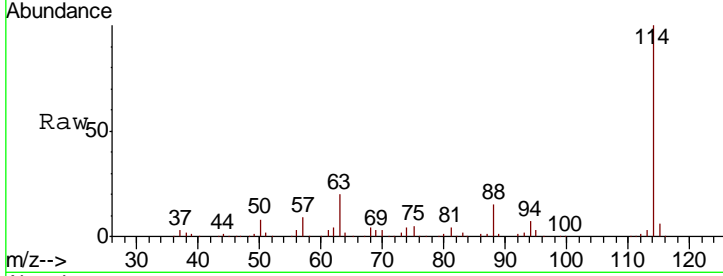




#34
 1,4-Difluorobenzene
 Concen: 50.000 ug/l
 RT: 8.70 min Scan# 1142
 Delta R.T. -0.00 min
 Lab File: VY000626.D
 Acq: 08 Nov 2019 18:32

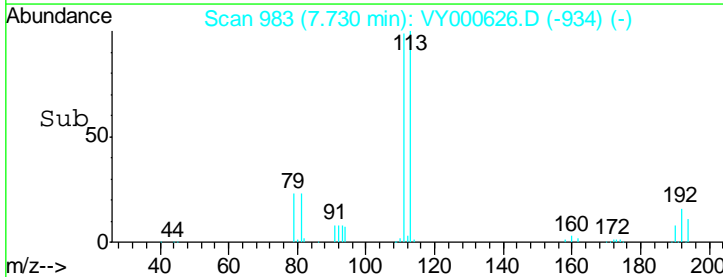
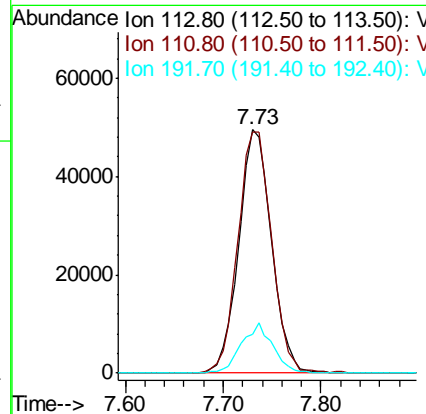
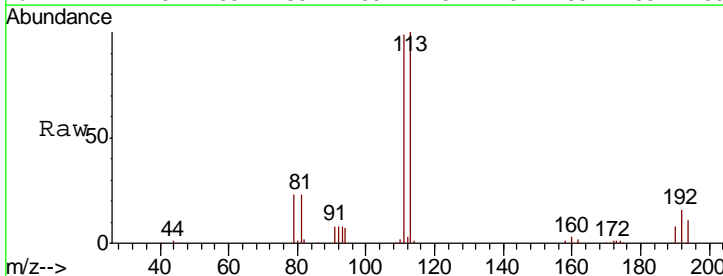
Instrument :
 MSVOA_Y
 ClientSampled :
 10-BRE

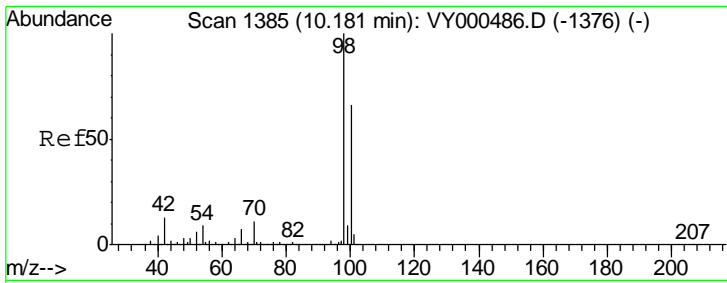
Tgt Ion	Resp	Lower	Upper
114	383514		
63	20.1	0.0	38.0
88	15.1	0.0	28.6



#35
 Dibromofluoromethane
 Concen: 50.888 ug/l
 RT: 7.73 min Scan# 983
 Delta R.T. -0.00 min
 Lab File: VY000626.D
 Acq: 08 Nov 2019 18:32

Tgt Ion	Resp	Lower	Upper
113	114573		
111	102.6	81.7	122.5
192	19.6	15.0	22.4

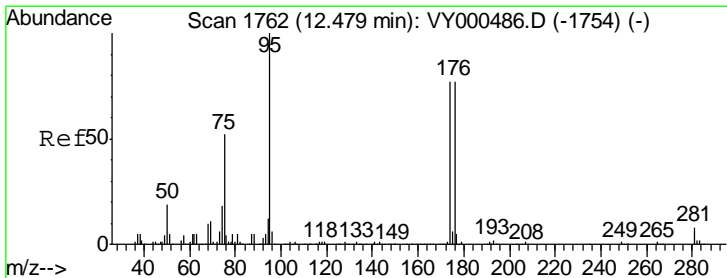
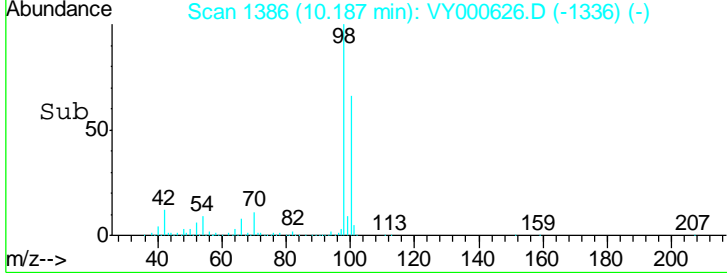
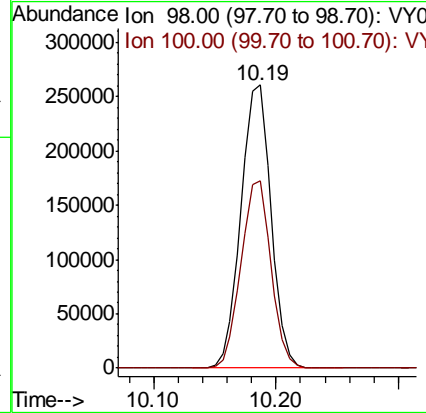
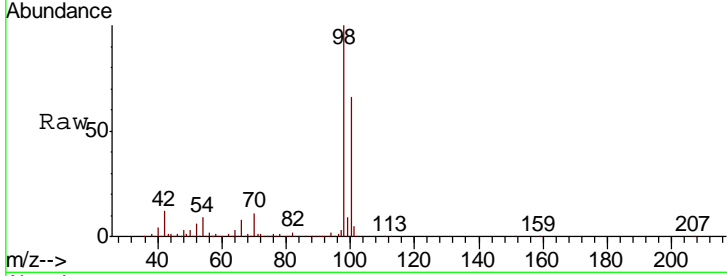




#50
 Toluene-d8
 Concen: 51.992 ug/l
 RT: 10.19 min Scan# 1386
 Delta R.T. 0.01 min
 Lab File: VY000626.D
 Acq: 08 Nov 2019 18:32

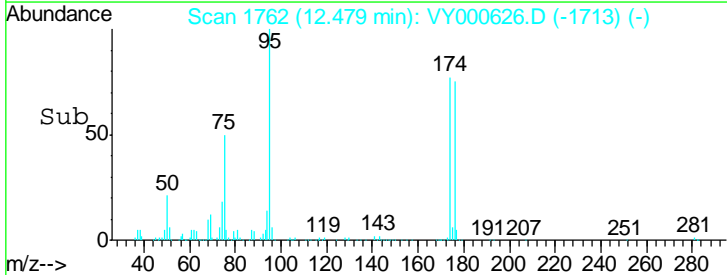
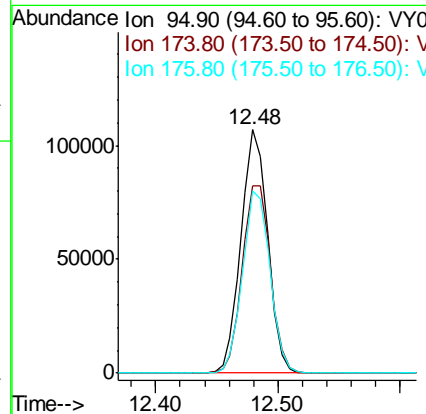
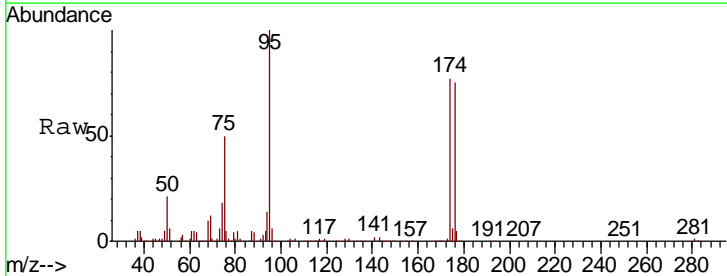
Instrument : MSVOA_Y
 ClientSampled : 10-BRE

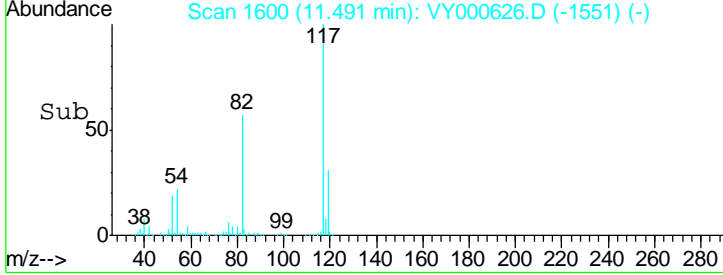
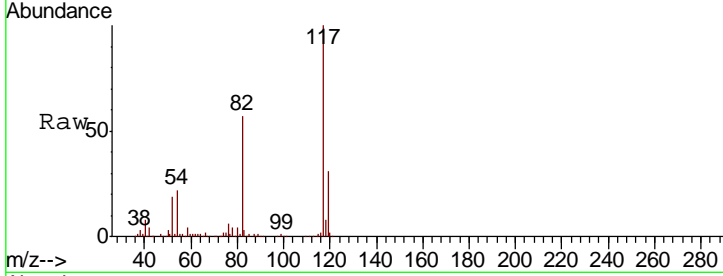
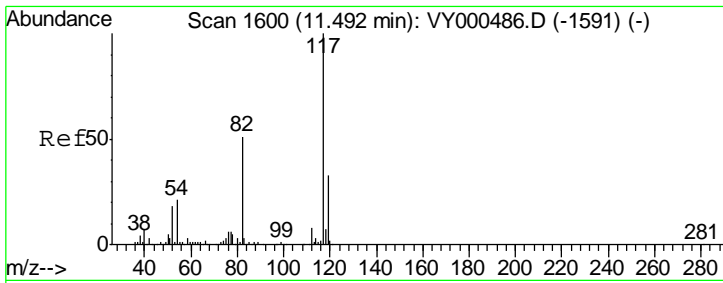
Tgt Ion: 98 Resp: 444175
 Ion Ratio Lower Upper
 98 100
 100 66.1 52.9 79.3



#62
 4-Bromofluorobenzene
 Concen: 49.714 ug/l
 RT: 12.48 min Scan# 1762
 Delta R.T. -0.00 min
 Lab File: VY000626.D
 Acq: 08 Nov 2019 18:32

Tgt Ion: 95 Resp: 161685
 Ion Ratio Lower Upper
 95 100
 174 81.2 0.0 161.6
 176 77.0 0.0 157.8

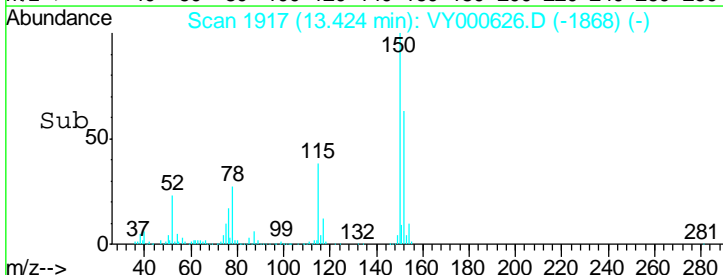
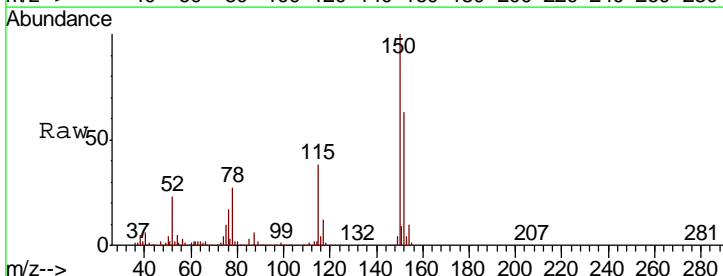
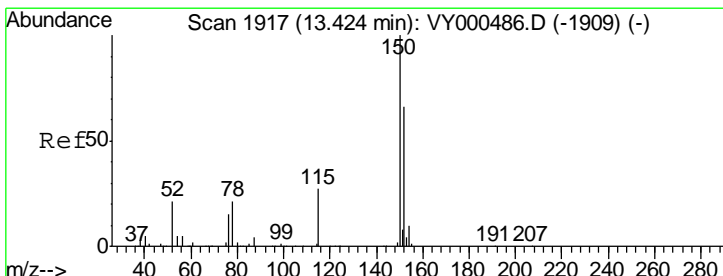
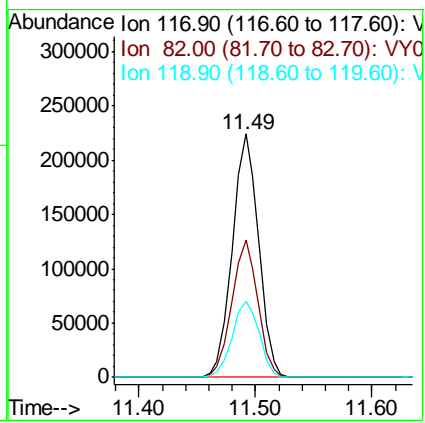




#63
 Chlorobenzene-d5
 Concen: 50.000 ug/l
 RT: 11.49 min Scan# 1600
 Delta R.T. -0.00 min
 Lab File: VY000626.D
 Acq: 08 Nov 2019 18:32

Instrument :
 MSVOA_Y
 ClientSampled :
 10-BRE

Tgt Ion	Resp	Lower	Upper
117	351998		
82	56.6	40.8	61.2
119	31.0	26.2	39.2



#72
 1,4-Dichlorobenzene-d4
 Concen: 50.000 ug/l
 RT: 13.42 min Scan# 1917
 Delta R.T. -0.00 min
 Lab File: VY000626.D
 Acq: 08 Nov 2019 18:32

Tgt Ion	Resp	Lower	Upper
152	158974		
115	60.4	29.1	87.4
150	159.2	0.0	348.8

