

Data Path : Z:\voasrv\HPCHEM1\MSVOA_Y\Data\VY110923\
 Data File : VY016276.D
 Acq On : 09 Nov 2023 13:03
 Operator : SY/MD
 Sample : 05293-02
 Misc : 6.00g/5.0mL/MSVOA_Y/SOIL
 ALS Vial : 11 Sample Multiplier: 1

Instrument :
 MSVOA_Y
 ClientSampleId :
 SB-2

Quant Time: Nov 09 22:57:33 2023
 Quant Method : Z:\voasrv\HPCHEM1\MSVOA_Y\methods\82Y110823S.M
 Quant Title : SW846 8260
 QLast Update : Thu Nov 09 00:45:52 2023
 Response via : Initial Calibration

Compound	R.T.	QIon	Response	Conc	Units	Dev(Min)

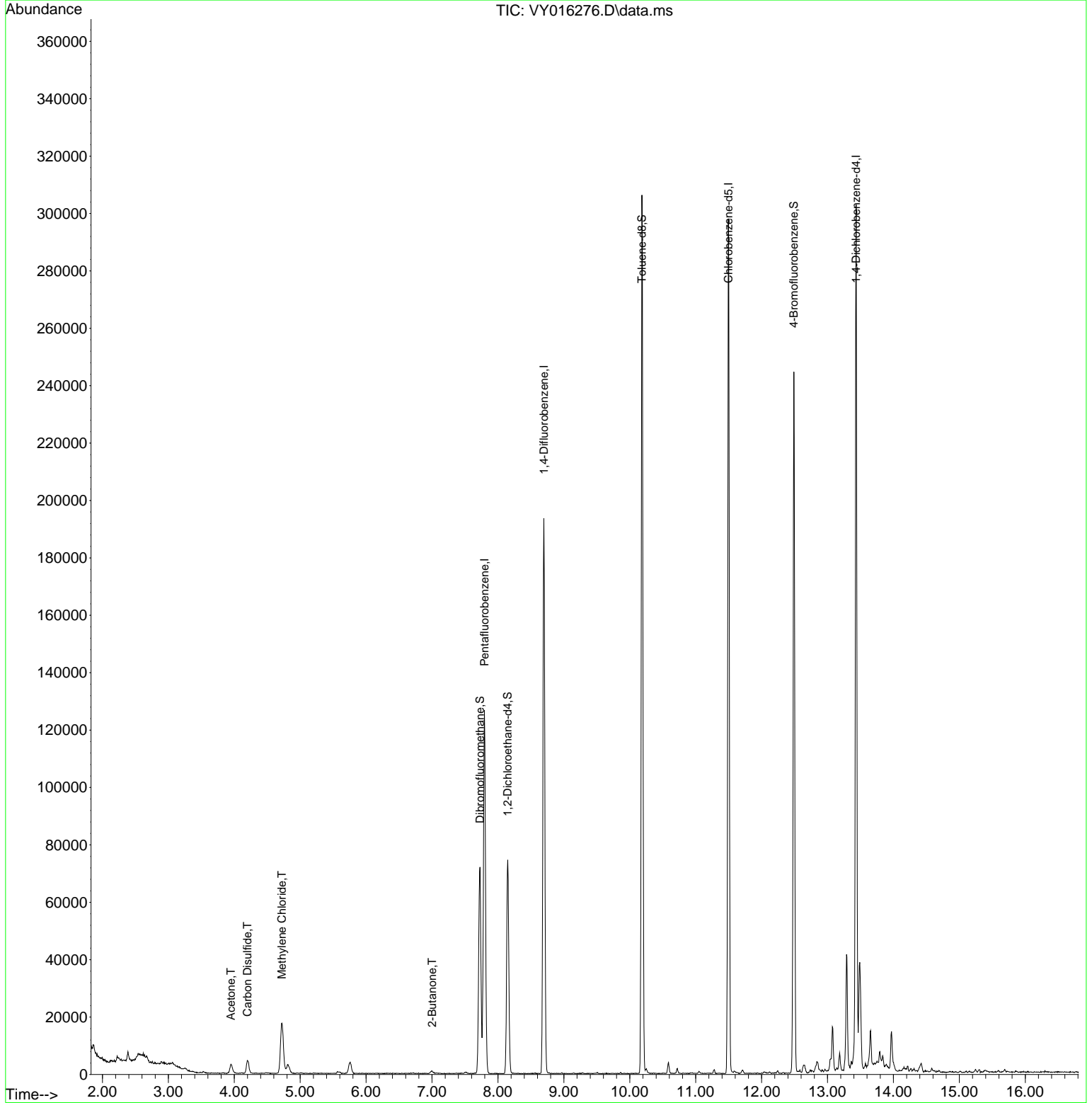
Internal Standards						
1) Pentafluorobenzene	7.795	168	98515	50.000	ug/l	0.00
34) 1,4-Difluorobenzene	8.697	114	170618	50.000	ug/l	0.00
63) Chlorobenzene-d5	11.495	117	163808	50.000	ug/l	0.00
72) 1,4-Dichlorobenzene-d4	13.434	152	78074	50.000	ug/l	0.00
System Monitoring Compounds						
33) 1,2-Dichloroethane-d4	8.149	65	58929	65.448	ug/l	0.00
Spiked Amount	50.000	Range	50 - 163	Recovery	=	130.900%
35) Dibromofluoromethane	7.728	113	52115	53.770	ug/l	0.00
Spiked Amount	50.000	Range	54 - 147	Recovery	=	107.540%
50) Toluene-d8	10.185	98	201697	51.317	ug/l	0.00
Spiked Amount	50.000	Range	58 - 134	Recovery	=	102.640%
62) 4-Bromofluorobenzene	12.489	95	70441	55.182	ug/l	0.00
Spiked Amount	50.000	Range	30 - 143	Recovery	=	110.360%
Target Compounds						
						Qvalue
16) Acetone	3.948	43	6006	40.326	ug/l	95
17) Carbon Disulfide	4.198	76	9381	3.123	ug/l	100
20) Methylene Chloride	4.722	84	14575	11.148	ug/l	85
25) 2-Butanone	7.002	43	1555	5.961	ug/l #	71

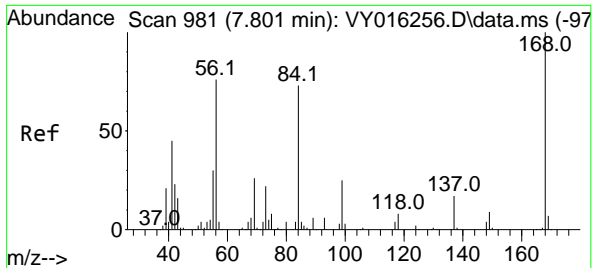
(#) = qualifier out of range (m) = manual integration (+) = signals summed

Data Path : Z:\voasrv\HPCHEM1\MSVOA_Y\Data\VY110923\
 Data File : VY016276.D
 Acq On : 09 Nov 2023 13:03
 Operator : SY/MD
 Sample : 05293-02
 Misc : 6.00g/5.0mL/MSVOA_Y/SOIL
 ALS Vial : 11 Sample Multiplier: 1

Instrument :
 MSVOA_Y
 ClientSampleId :
 SB-2

Quant Time: Nov 09 22:57:33 2023
 Quant Method : Z:\voasrv\HPCHEM1\MSVOA_Y\methods\82Y110823S.M
 Quant Title : SW846 8260
 QLast Update : Thu Nov 09 00:45:52 2023
 Response via : Initial Calibration

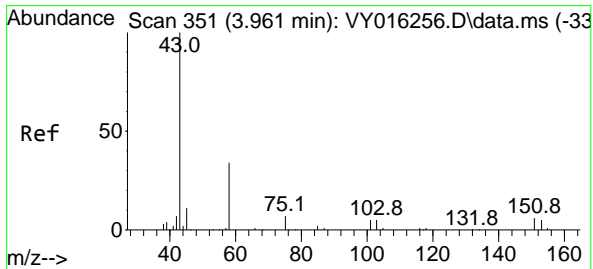
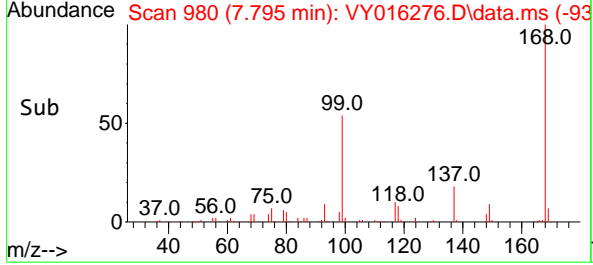
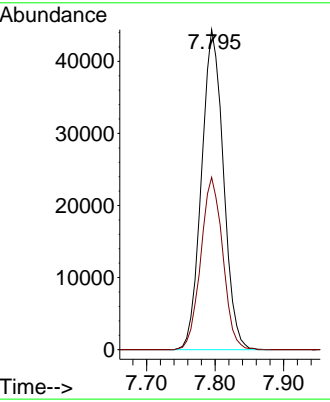
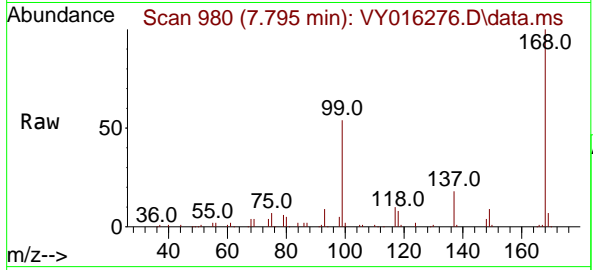




#1
 Pentafluorobenzene
 Concen: 50.000 ug/l
 RT: 7.795 min Scan# 91
 Delta R.T. -0.006 min
 Lab File: VY016276.D
 Acq: 09 Nov 2023 13:03

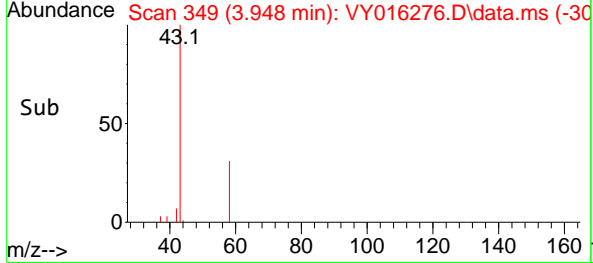
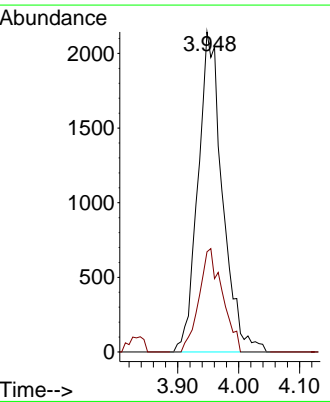
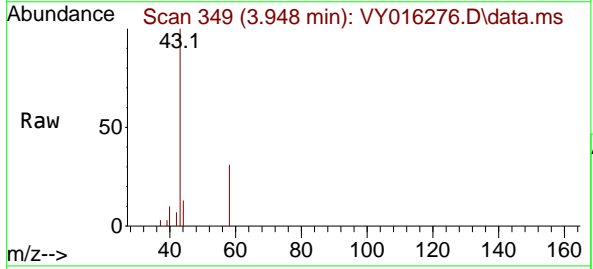
Instrument : MSVOA_Y
 ClientSampleId : SB-2

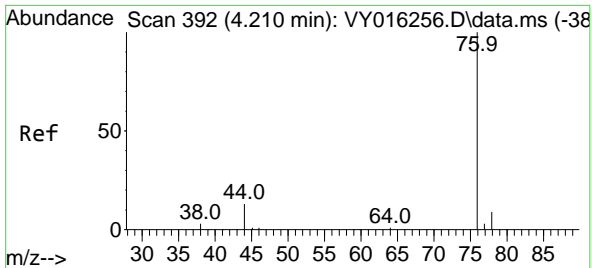
Tgt Ion:168 Resp: 98515
 Ion Ratio Lower Upper
 168 100
 99 53.8 43.4 65.0



#16
 Acetone
 Concen: 40.326 ug/l
 RT: 3.948 min Scan# 349
 Delta R.T. -0.012 min
 Lab File: VY016276.D
 Acq: 09 Nov 2023 13:03

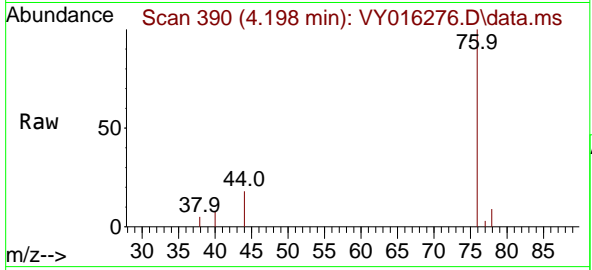
Tgt Ion: 43 Resp: 6006
 Ion Ratio Lower Upper
 43 100
 58 31.3 22.7 34.1



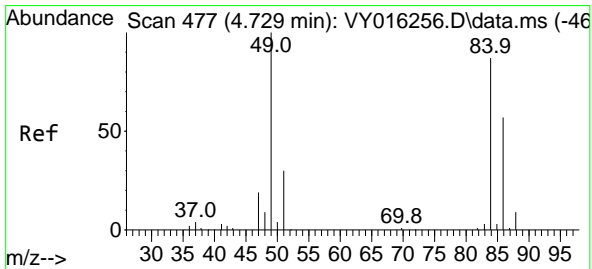
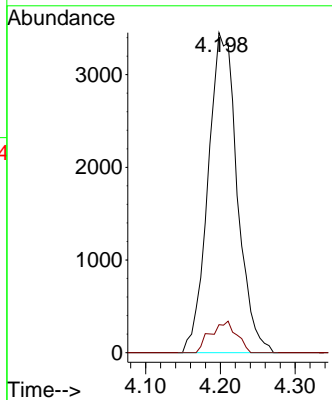
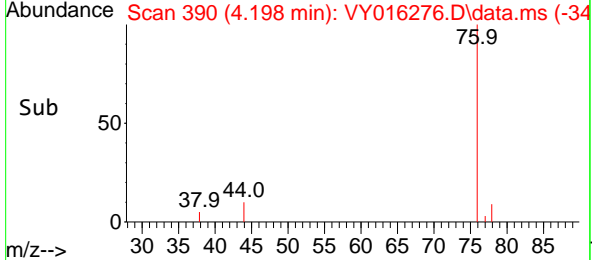


#17
 Carbon Disulfide
 Concen: 3.123 ug/l
 RT: 4.198 min Scan# 391
 Delta R.T. -0.012 min
 Lab File: VY016276.D
 Acq: 09 Nov 2023 13:03

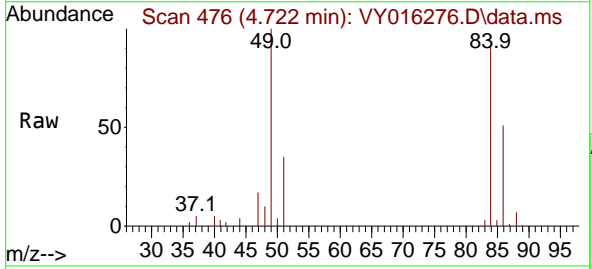
Instrument : MSVOA_Y
 ClientSampleId : SB-2



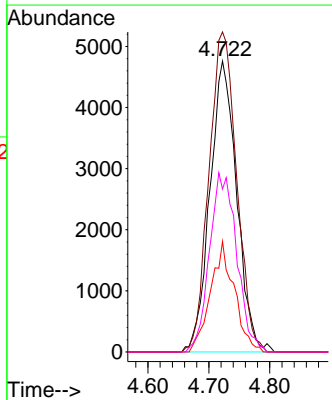
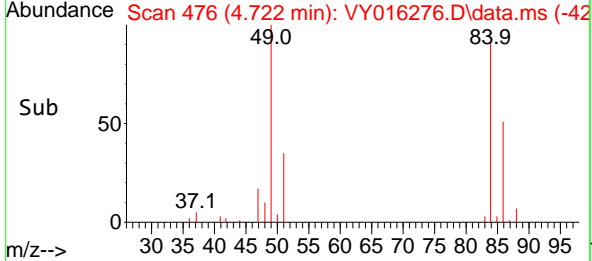
Tgt Ion: 76 Resp: 9381
 Ion Ratio Lower Upper
 76 100
 78 8.7 7.0 10.4

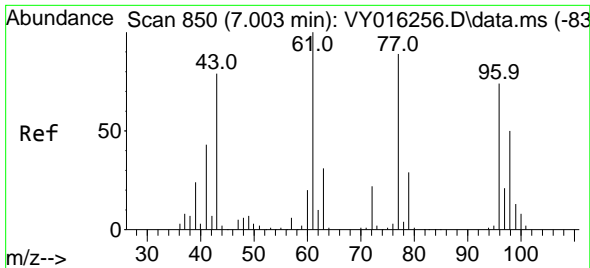


#20
 Methylene Chloride
 Concen: 11.148 ug/l
 RT: 4.722 min Scan# 476
 Delta R.T. -0.007 min
 Lab File: VY016276.D
 Acq: 09 Nov 2023 13:03



Tgt Ion: 84 Resp: 14575
 Ion Ratio Lower Upper
 84 100
 49 110.0 106.9 160.3
 51 38.0 33.2 49.8
 86 56.0 51.0 76.6

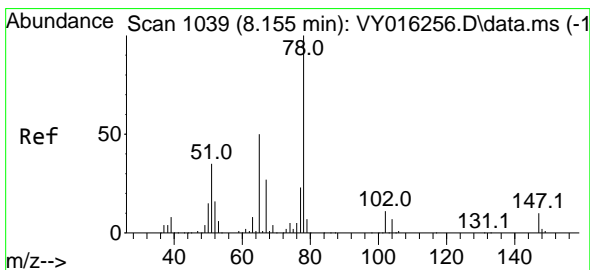
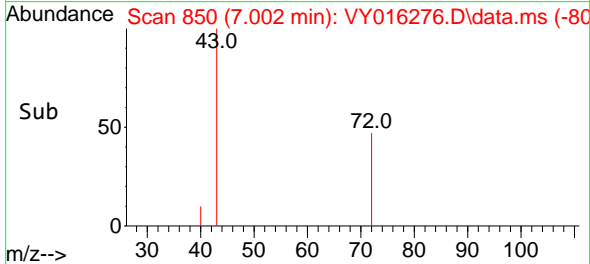
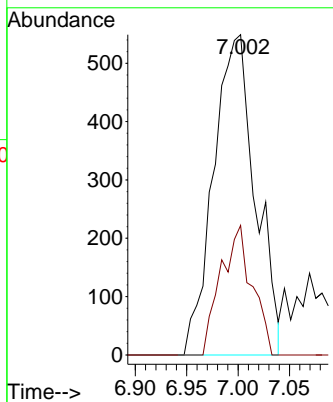
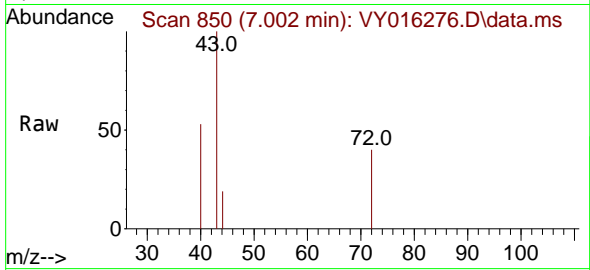




#25
 2-Butanone
 Concen: 5.961 ug/l
 RT: 7.002 min Scan# 81
 Delta R.T. -0.000 min
 Lab File: VY016276.D
 Acq: 09 Nov 2023 13:03

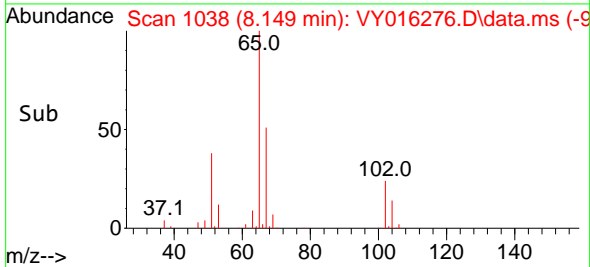
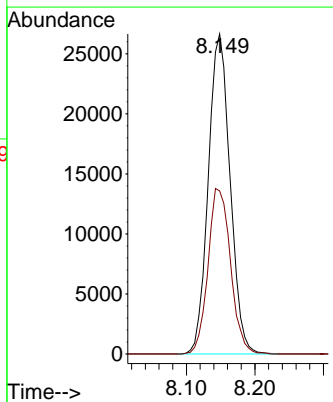
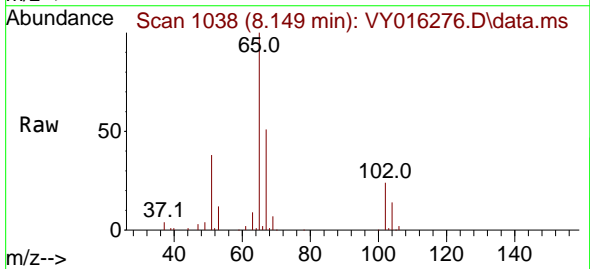
Instrument :
 MSVOA_Y
 ClientSampleId :
 SB-2

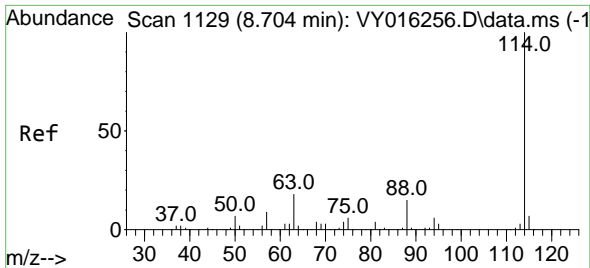
Tgt Ion: 43 Resp: 1555
 Ion Ratio Lower Upper
 43 100
 72 40.4 20.5 30.7#



#33
 1,2-Dichloroethane-d4
 Concen: 65.448 ug/l
 RT: 8.149 min Scan# 1038
 Delta R.T. -0.006 min
 Lab File: VY016276.D
 Acq: 09 Nov 2023 13:03

Tgt Ion: 65 Resp: 58929
 Ion Ratio Lower Upper
 65 100
 67 53.4 0.0 101.8

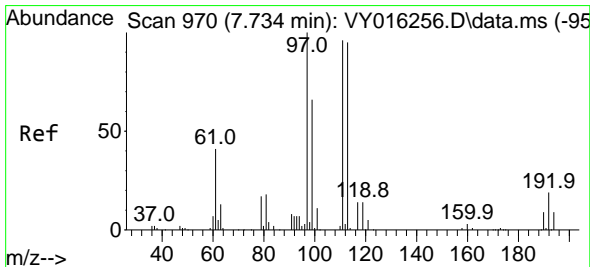
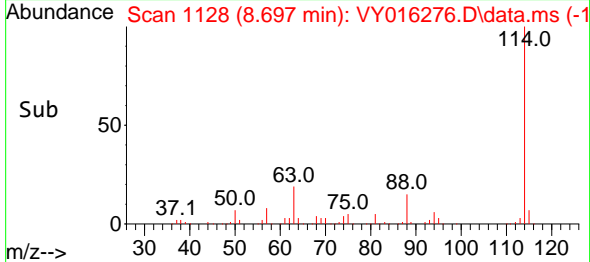
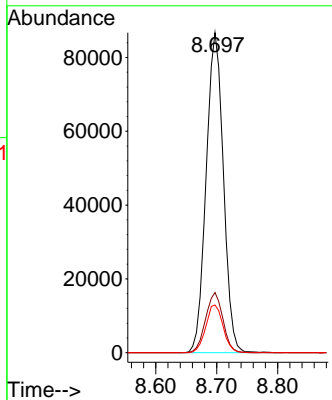
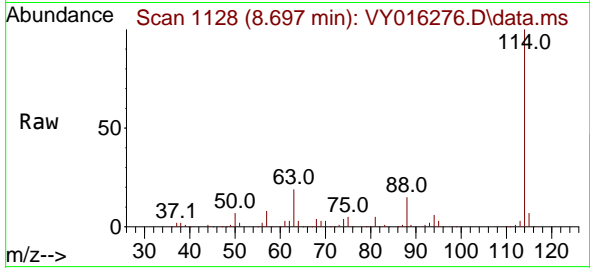




#34
 1,4-Difluorobenzene
 Concen: 50.000 ug/l
 RT: 8.697 min Scan# 1128
 Delta R.T. -0.006 min
 Lab File: VY016276.D
 Acq: 09 Nov 2023 13:03

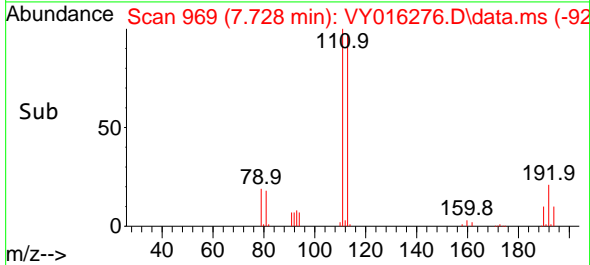
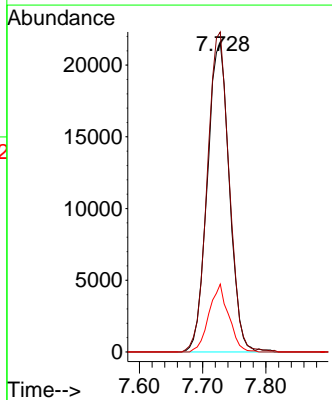
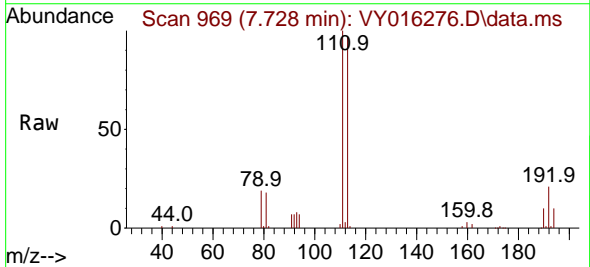
Instrument : MSVOA_Y
 ClientSampleId : SB-2

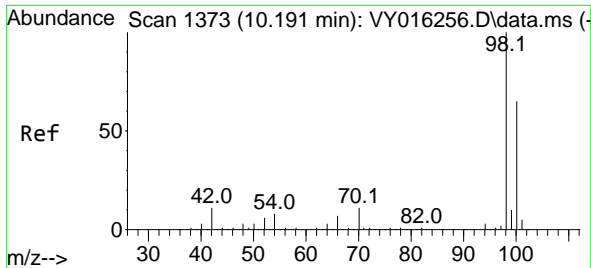
Tgt Ion	Resp	Lower	Upper
114	170618		
63	18.8	0.0	42.4
88	14.9	0.0	30.6



#35
 Dibromofluoromethane
 Concen: 53.770 ug/l
 RT: 7.728 min Scan# 969
 Delta R.T. -0.006 min
 Lab File: VY016276.D
 Acq: 09 Nov 2023 13:03

Tgt Ion	Resp	Lower	Upper
113	52115		
111	102.6	81.3	121.9
192	19.6	16.9	25.3

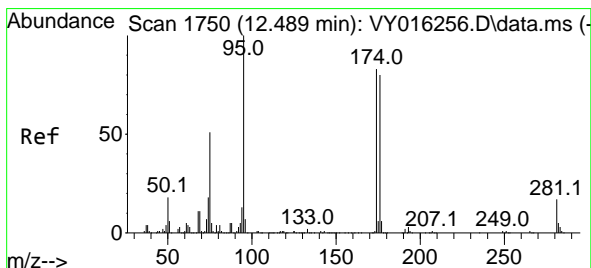
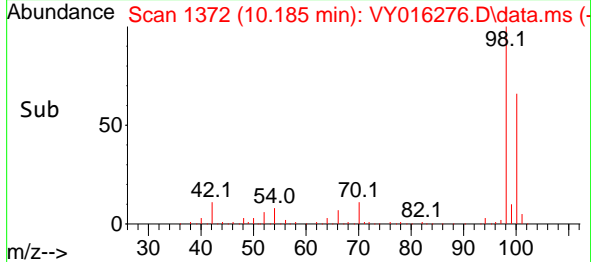
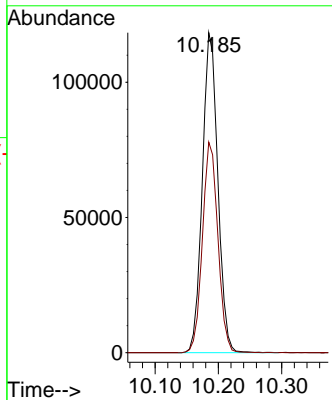
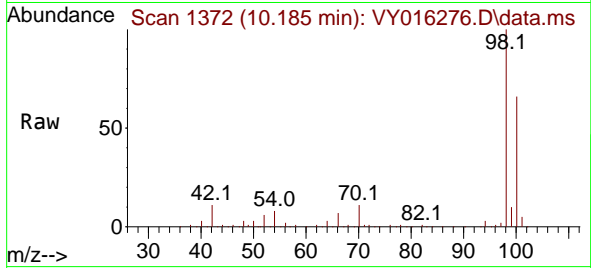




#50
 Toluene-d8
 Concen: 51.317 ug/l
 RT: 10.185 min Scan# 111
 Delta R.T. -0.006 min
 Lab File: VY016276.D
 Acq: 09 Nov 2023 13:03

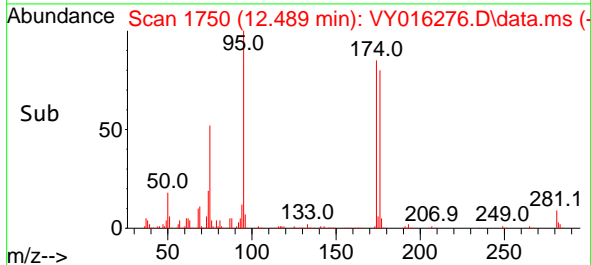
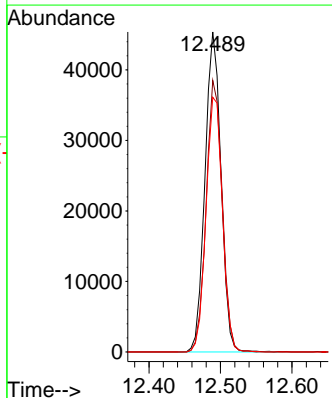
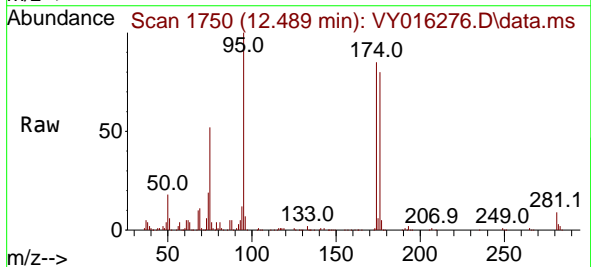
Instrument : MSVOA_Y
 ClientSampleId : SB-2

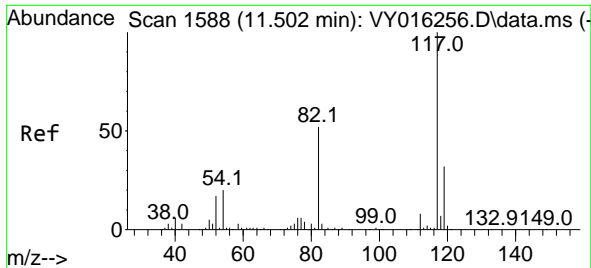
Tgt Ion: 98 Resp: 201697
 Ion Ratio Lower Upper
 98 100
 100 65.7 50.1 75.1



#62
 4-Bromofluorobenzene
 Concen: 55.182 ug/l
 RT: 12.489 min Scan# 1750
 Delta R.T. -0.000 min
 Lab File: VY016276.D
 Acq: 09 Nov 2023 13:03

Tgt Ion: 95 Resp: 70441
 Ion Ratio Lower Upper
 95 100
 174 85.3 0.0 178.2
 176 81.9 0.0 173.8



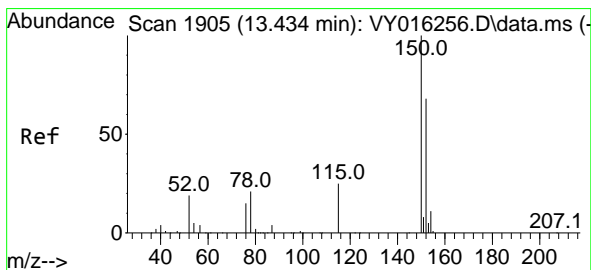
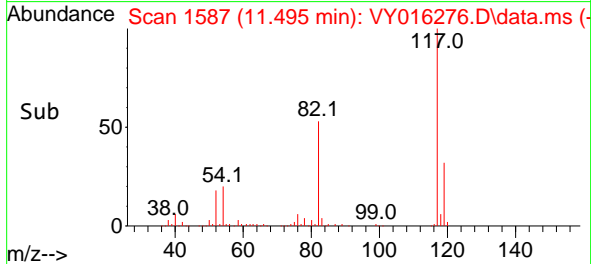
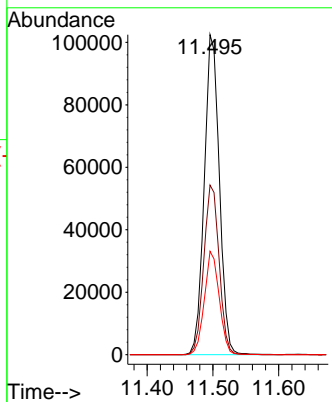
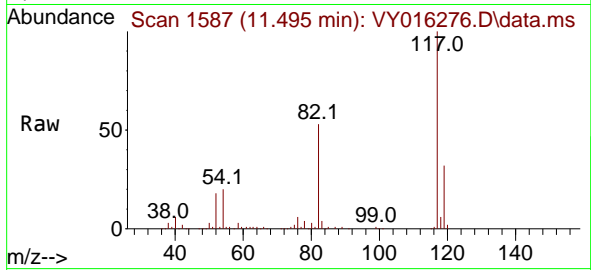


#63
 Chlorobenzene-d5
 Concen: 50.000 ug/l
 RT: 11.495 min Scan# 11
 Delta R.T. -0.006 min
 Lab File: VY016276.D
 Acq: 09 Nov 2023 13:03

Instrument : MSVOA_Y
 ClientSampleId : SB-2

Tgt Ion:117 Resp: 163808

Ion	Ratio	Lower	Upper
117	100		
82	53.0	43.4	65.0
119	32.3	26.3	39.5



#72
 1,4-Dichlorobenzene-d4
 Concen: 50.000 ug/l
 RT: 13.434 min Scan# 1905
 Delta R.T. -0.000 min
 Lab File: VY016276.D
 Acq: 09 Nov 2023 13:03

Tgt Ion:152 Resp: 78074

Ion	Ratio	Lower	Upper
152	100		
115	58.0	28.8	86.5
150	156.1	0.0	348.8

