

Data Path : Z:\voasrv\HPCHEM1\MSVOA_Y\Data\VY110923\
 Data File : VY016281.D
 Acq On : 09 Nov 2023 15:00
 Operator : SY/MD
 Sample : 05293-07
 Misc : 5.89g/5.0mL/MSVOA_Y/SOIL
 ALS Vial : 16 Sample Multiplier: 1

Instrument :
 MSVOA_Y
 ClientSampleId :
 SB-7

Integration Parameters: RTEINT.P

Integrator: RTE
 Smoothing : ON Filtering: 5
 Sampling : 1 Min Area: 3 % of largest Peak
 Start Thrs: 0.2 Max Peaks: 100
 Stop Thrs : 0 Peak Location: TOP

If leading or trailing edge < 100 prefer < Baseline drop else tangent >
 Peak separation: 5

Method : Z:\voasrv\HPCHEM1\MSVOA_Y\methods\82Y110823S.M
 Title : SW846 8260

Signal : TIC: VY016281.D\data.ms

peak #	R.T. min	first scan	max scan	last scan	PK TY	peak height	corr. area	corr. % max.	% of total
1	2.900	173	177	184	rVB6	2523	5276	1.57%	0.276%
2	4.723	466	476	483	rBV	9140	26273	7.84%	1.372%
3	4.820	483	492	504	rVB3	8113	26951	8.04%	1.408%
4	5.753	636	645	647	rBV4	3401	7594	2.27%	0.397%
5	7.722	959	968	974	rBV	48370	115193	34.36%	6.017%
6	7.789	974	979	994	rVB	78990	178899	53.36%	9.345%
7	8.149	1028	1038	1047	rBV	46971	106548	31.78%	5.566%
8	8.691	1119	1127	1138	rBV	125121	248246	74.05%	12.967%
9	10.185	1364	1372	1379	rBV	192285	335243	100.00%	17.512%
10	10.581	1431	1437	1445	rVB	3048	5054	1.51%	0.264%
11	11.496	1579	1587	1596	rBV	178156	301598	89.96%	15.754%
12	12.489	1743	1750	1760	rVB2	148601	250399	74.69%	13.080%
13	13.428	1898	1904	1914	rVB	186394	285381	85.13%	14.907%
14	13.788	1959	1963	1968	rVV3	2748	3974	1.19%	0.208%
15	13.965	1986	1992	1999	rVB2	10989	17747	5.29%	0.927%

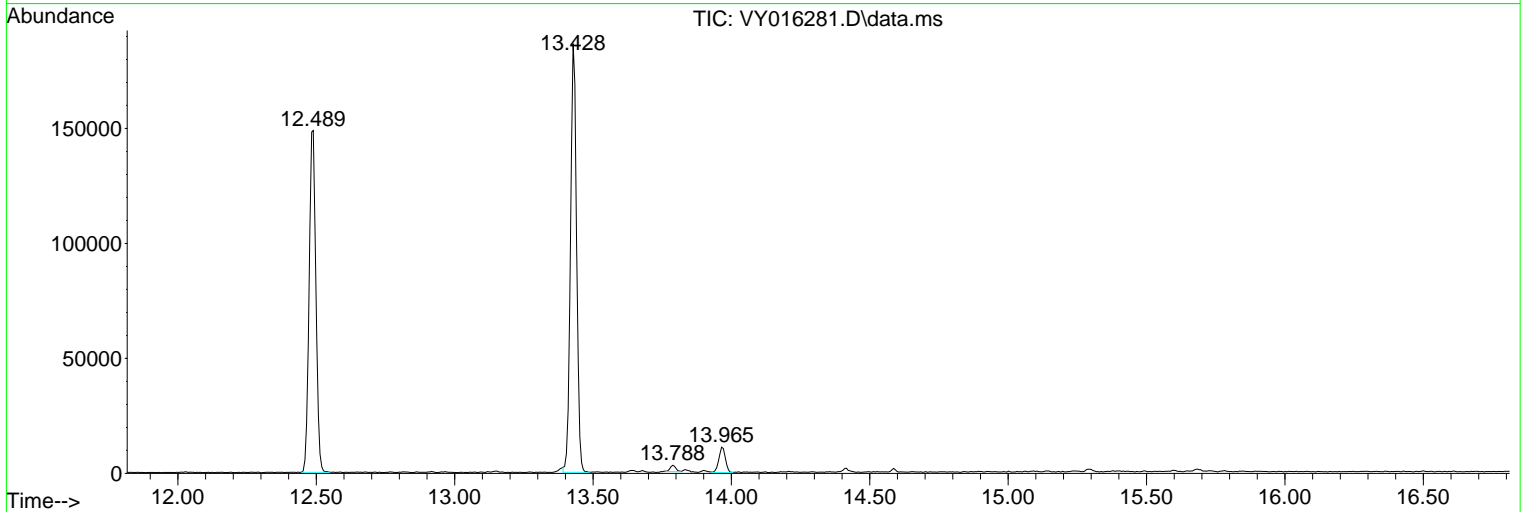
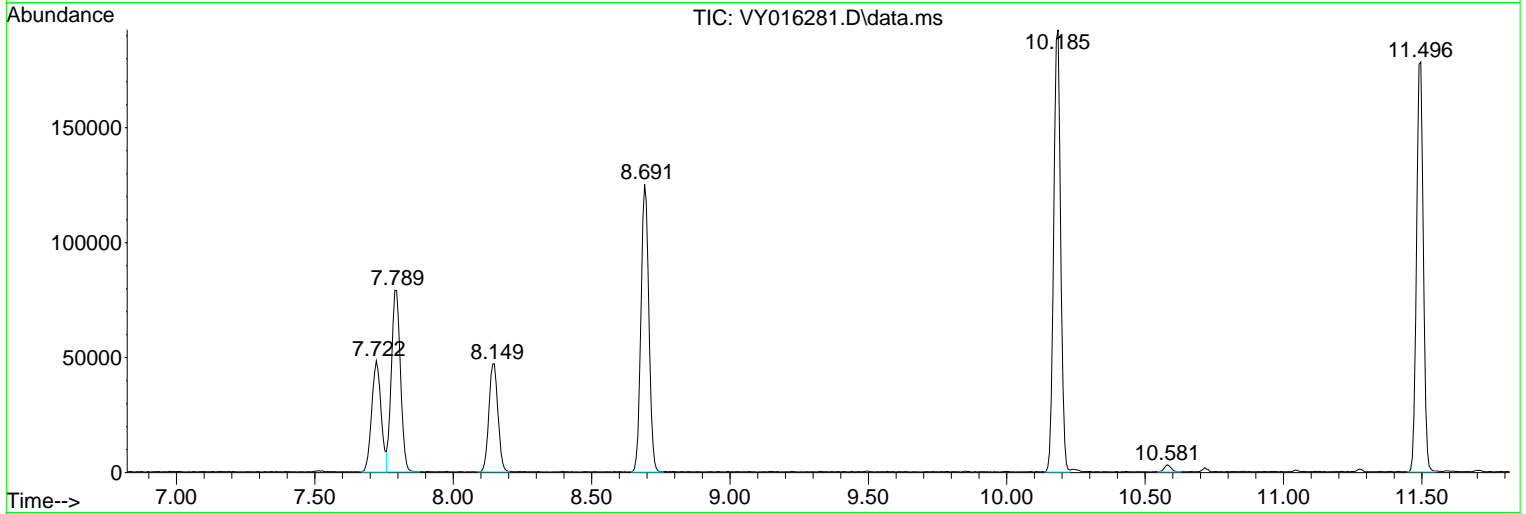
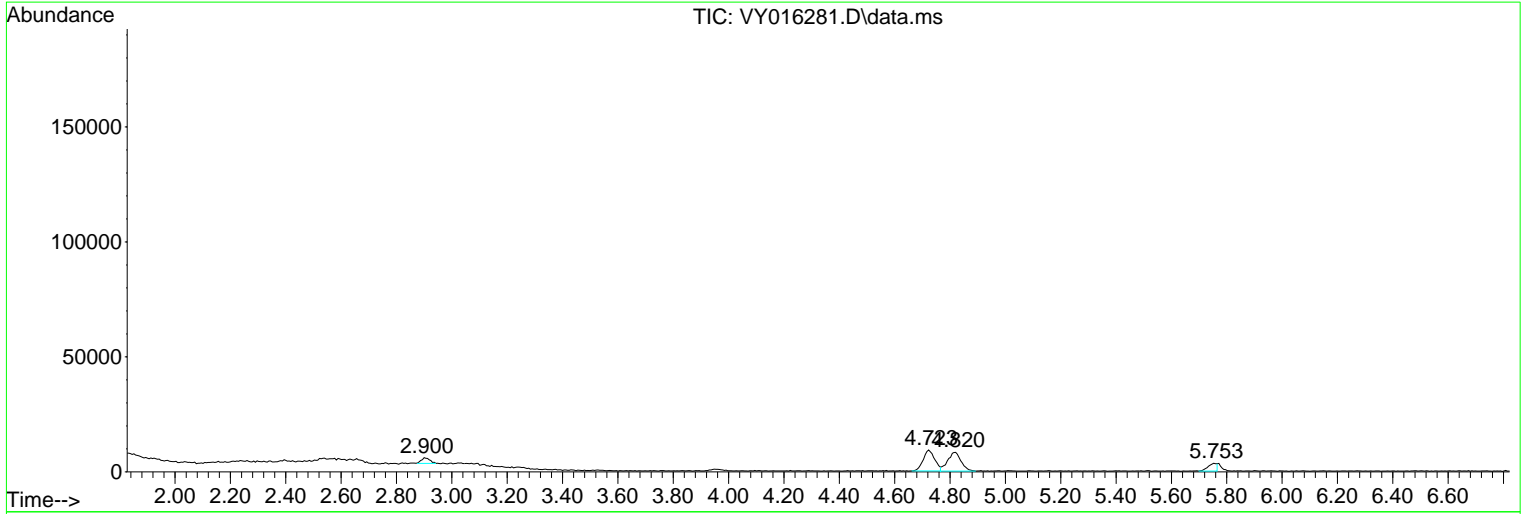
Sum of corrected areas: 1914376

Data Path : Z:\voasrv\HPCHEM1\MSVOA_Y\Data\VY110923\
 Data File : VY016281.D
 Acq On : 09 Nov 2023 15:00
 Operator : SY/MD
 Sample : 05293-07
 Misc : 5.89g/5.0mL/MSVOA_Y/SOIL
 ALS Vial : 16 Sample Multiplier: 1

Instrument :
 MSVOA_Y
 ClientSampleId :
 SB-7

Quant Method : Z:\voasrv\HPCHEM1\MSVOA_Y\methods\82Y110823S.M
 Quant Title : SW846 8260

TIC Library : C:\Database\NIST20.L
 TIC Integration Parameters: LSCINT.P



Data Path : Z:\voasrv\HPCHEM1\MSVOA_Y\Data\VY110923\
 Data File : VY016281.D
 Acq On : 09 Nov 2023 15:00
 Operator : SY/MD
 Sample : 05293-07
 Misc : 5.89g/5.0mL/MSVOA_Y/SOIL
 ALS Vial : 16 Sample Multiplier: 1

Instrument :
 MSVOA_Y
 ClientSampleId :
 SB-7

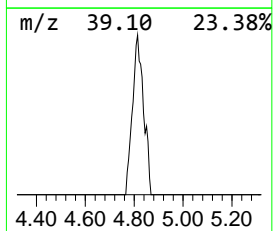
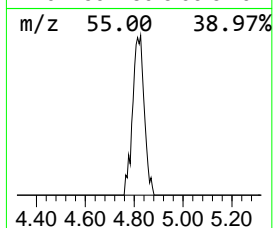
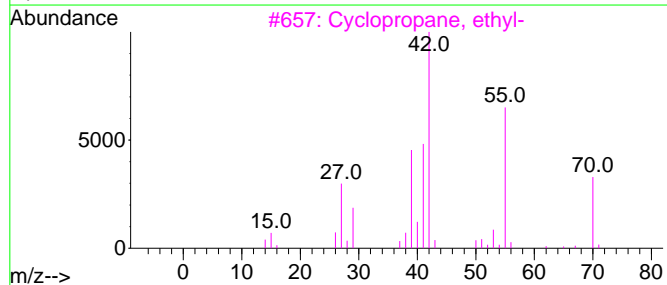
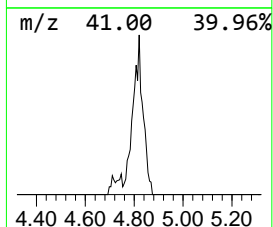
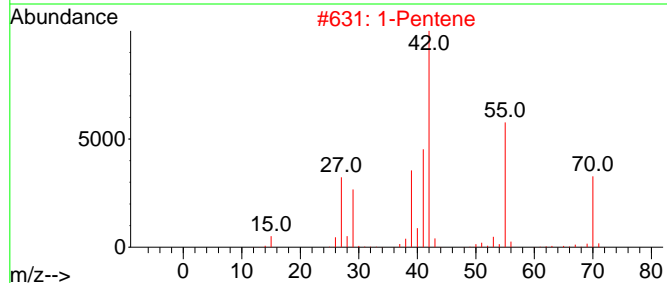
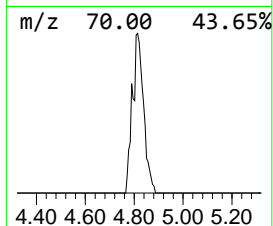
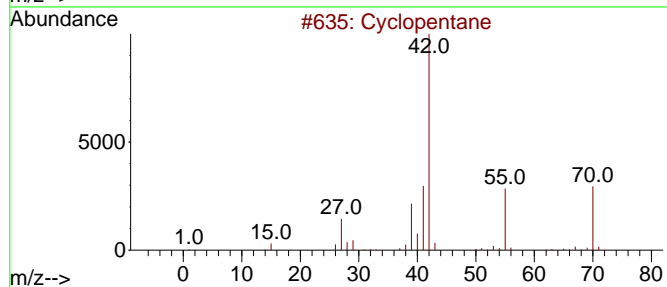
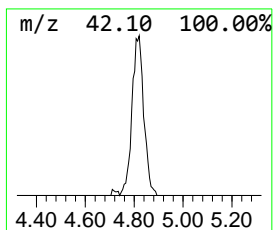
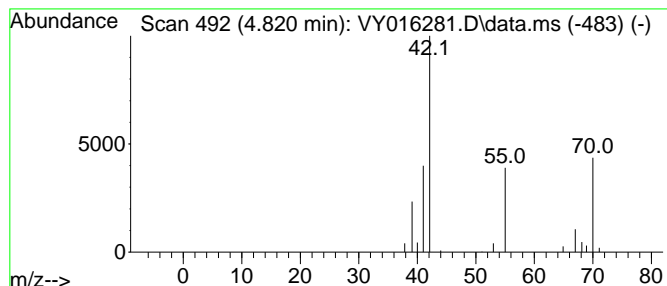
Quant Method : Z:\voasrv\HPCHEM1\MSVOA_Y\methods\82Y110823S.M
 Quant Title : SW846 8260

TIC Library : C:\Database\NIST20.L
 TIC Integration Parameters: LSCINT.P

 Peak Number 1 Cyclopentane Concentration Rank 1

R.T.	EstConc	Area	Relative to ISTD	R.T.
4.820	7.53 ug/l	26951	Pentafluorobenzene	7.795

Hit#	of 5	Tentative ID	MW	MolForm	CAS#	Qual
1		Cyclopentane	70	C5H10	000287-92-3	86
2		1-Pentene	70	C5H10	000109-67-1	50
3		Cyclopropane, ethyl-	70	C5H10	001191-96-4	5
4		Methyl propargyl ether	70	C4H6O	000627-41-8	5
5		Isobutyronitrile	69	C4H7N	000078-82-0	4



Data Path : Z:\voasrv\HPCHEM1\MSVOA_Y\Data\VY110923\
Data File : VY016281.D
Acq On : 09 Nov 2023 15:00
Operator : SY/MD
Sample : 05293-07
Misc : 5.89g/5.0mL/MSVOA_Y/SOIL
ALS Vial : 16 Sample Multiplier: 1

Instrument :
MSVOA_Y
ClientSampleId :
SB-7

Quant Method : Z:\voasrv\HPCHEM1\MSVOA_Y\methods\82Y110823S.M
Quant Title : SW846 8260

TIC Library : C:\Database\NIST20.L
TIC Integration Parameters: LSCINT.P

TIC Top Hit name	RT	EstConc	Units	Response	--Internal Standard--			
					#	RT	Resp	Conc
Cyclopentane	4.820	7.5	ug/l	26951	1	7.795	178899	50.0