

Data Path : Z:\voasrv\HPCHEM1\MSVOA_Y\Data\VY111422\
 Data File : VY011444.D
 Acq On : 14 Nov 2022 16:55
 Operator : KP/MD
 Sample : N5582-02
 Misc : 5.07g/5.0mL/MSVOA_Y/SOIL
 ALS Vial : 13 Sample Multiplier: 1

Instrument :
 MSVOA_Y
 ClientSampleId :
 31877

Integration Parameters: RTEINT.P
 Integrator: RTE
 Smoothing : ON Filtering: 5
 Sampling : 1 Min Area: 3 % of largest Peak
 Start Thrs: 0.2 Max Peaks: 100
 Stop Thrs : 0 Peak Location: TOP

If leading or trailing edge < 100 prefer < Baseline drop else tangent >
 Peak separation: 5

Method : Z:\voasrv\HPCHEM1\MSVOA_Y\methods\82Y111022S.M
 Title : SW846 8260

Signal : TIC: VY011444.D\data.ms

peak #	R.T. min	first scan	max scan	last scan	PK TY	peak height	corr. area	corr. % max.	% of total
1	4.716	463	475	493	rBV2	41472	129663	11.10%	1.973%
2	6.972	836	845	859	rBV	22210	68560	5.87%	1.043%
3	7.716	957	967	973	rBV	178077	426610	36.53%	6.491%
4	7.789	973	979	996	rVB	285175	634397	54.33%	9.653%
5	8.142	1025	1037	1050	rBV	155312	342135	29.30%	5.206%
6	8.691	1117	1127	1137	rBV	442585	868241	74.36%	13.211%
7	10.179	1363	1371	1384	rBV	690348	1167693	100.00%	17.768%
8	10.581	1430	1437	1443	rVB	11263	20091	1.72%	0.306%
9	10.947	1491	1497	1507	rBV	45562	78889	6.76%	1.200%
10	11.489	1579	1586	1597	rBV	634737	1015417	86.96%	15.451%
11	12.483	1742	1749	1759	rBV	517246	829875	71.07%	12.627%
12	12.818	1799	1804	1809	rVB2	8479	15104	1.29%	0.230%
13	13.428	1897	1904	1913	rBV	596879	955186	81.80%	14.534%
14	13.965	1988	1992	1996	rBV	14820	20106	1.72%	0.306%

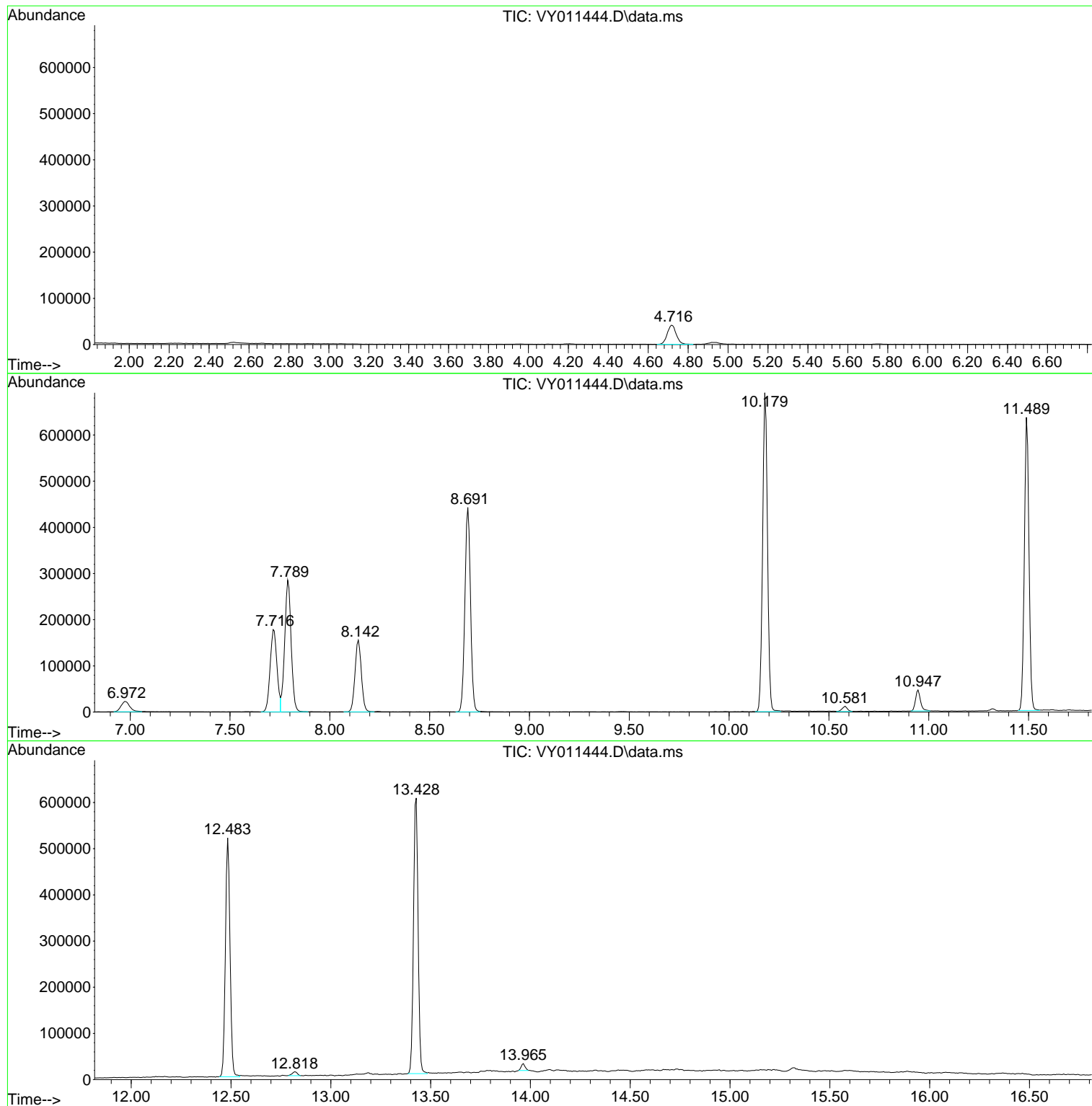
Sum of corrected areas: 6571967

Data Path : Z:\voasrv\HPCHEM1\MSVOA_Y\Data\VY111422\
Data File : VY011444.D
Acq On : 14 Nov 2022 16:55
Operator : KP/MD
Sample : N5582-02
Misc : 5.07g/5.0mL/MSVOA_Y/SOIL
ALS Vial : 13 Sample Multiplier: 1

Instrument :
MSVOA_Y
ClientSampleId :
31877

Quant Method : Z:\voasrv\HPCHEM1\MSVOA_Y\methods\82Y111022S.M
Quant Title : SW846 8260

TIC Library : C:\Database\NIST20.L
TIC Integration Parameters: LSCINT.P



Library Search Compound Report

Data Path : Z:\voasrv\HPCHEM1\MSVOA_Y\Data\VY111422\
Data File : VY011444.D
Acq On : 14 Nov 2022 16:55
Operator : KP/MD
Sample : N5582-02
Misc : 5.07g/5.0mL/MSVOA_Y/SOIL
ALS Vial : 13 Sample Multiplier: 1

Instrument :
MSVOA_Y
ClientSampleId :
31877

Quant Method : Z:\voasrv\HPCHEM1\MSVOA_Y\methods\82Y111022S.M
Quant Title : SW846 8260

TIC Library : C:\Database\NIST20.L
TIC Integration Parameters: LSCINT.P

No Library Search Compounds Detected

Data Path : Z:\voasrv\HPCHEM1\MSVOA_Y\Data\VY111422\
Data File : VY011444.D
Acq On : 14 Nov 2022 16:55
Operator : KP/MD
Sample : N5582-02
Misc : 5.07g/5.0mL/MSVOA_Y/SOIL
ALS Vial : 13 Sample Multiplier: 1

Instrument :
MSVOA_Y
ClientSampleId :
31877

Quant Method : Z:\voasrv\HPCHEM1\MSVOA_Y\methods\82Y111022S.M
Quant Title : SW846 8260

TIC Library : C:\Database\NIST0.L
TIC Integration Parameters: LSCINT.P

TIC Top Hit name	RT	EstConc	Units	Response	--Internal Standard--			
					#	RT	Resp	Conc
