

Data Path : Z:\voasrv\HPCHEM1\MSVOA_Y\Data\VY111422\
 Data File : VY011445.D
 Acq On : 14 Nov 2022 17:18
 Operator : KP/MD
 Sample : N5528-01
 Misc : 5.03g/5.0mL/MSVOA_Y/SOIL
 ALS Vial : 14 Sample Multiplier: 1

Instrument :
 MSVOA_Y
 ClientSampleId :
 SAMPLE-3

Integration Parameters: RTEINT.P
 Integrator: RTE
 Smoothing : ON Filtering: 5
 Sampling : 1 Min Area: 3 % of largest Peak
 Start Thrs: 0.2 Max Peaks: 100
 Stop Thrs : 0 Peak Location: TOP

If leading or trailing edge < 100 prefer < Baseline drop else tangent >
 Peak separation: 5

Method : Z:\voasrv\HPCHEM1\MSVOA_Y\methods\82Y111022S.M
 Title : SW846 8260

Signal : TIC: VY011445.D\data.ms

peak #	R.T. min	first scan	max scan	last scan	PK TY	peak height	corr. area	corr. % max.	% of total
1	4.716	463	475	491	rVB	42037	130539	10.18%	1.992%
2	4.924	496	509	528	rBV2	12353	48901	3.81%	0.746%
3	6.972	834	845	867	rBV	60911	184231	14.37%	2.811%
4	7.716	955	967	973	rBV	223450	533309	41.60%	8.137%
5	7.789	973	979	991	rVB	355742	808117	63.03%	12.330%
6	8.143	1025	1037	1049	rBV	204352	447287	34.89%	6.824%
7	8.691	1118	1127	1138	rBV	517588	1007639	78.60%	15.374%
8	10.179	1363	1371	1380	rBV	766254	1282060	100.00%	19.561%
9	10.947	1491	1497	1508	rBV	11676	21157	1.65%	0.323%
10	11.490	1579	1586	1597	rBV	569388	906180	70.68%	13.826%
11	12.483	1742	1749	1760	rBV	399084	609459	47.54%	9.299%
12	13.428	1897	1904	1911	rBV	344069	539944	42.12%	8.238%
13	13.965	1985	1992	1999	rVB2	8392	15004	1.17%	0.229%
14	15.318	2204	2214	2219	rBV	11140	20447	1.59%	0.312%

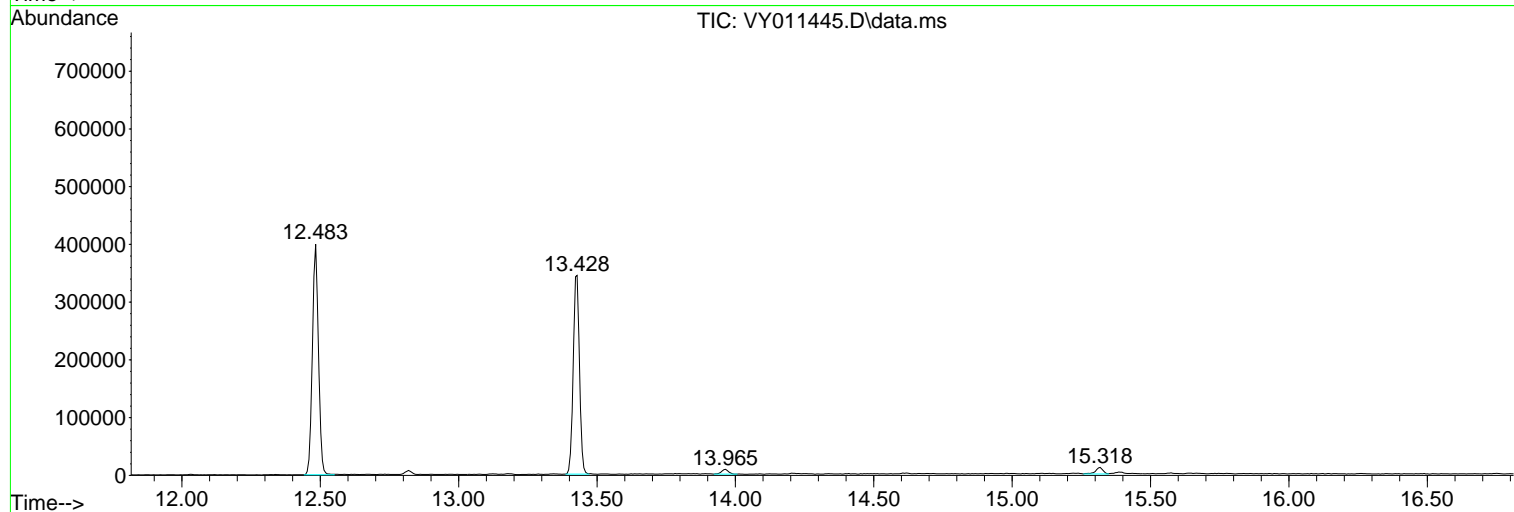
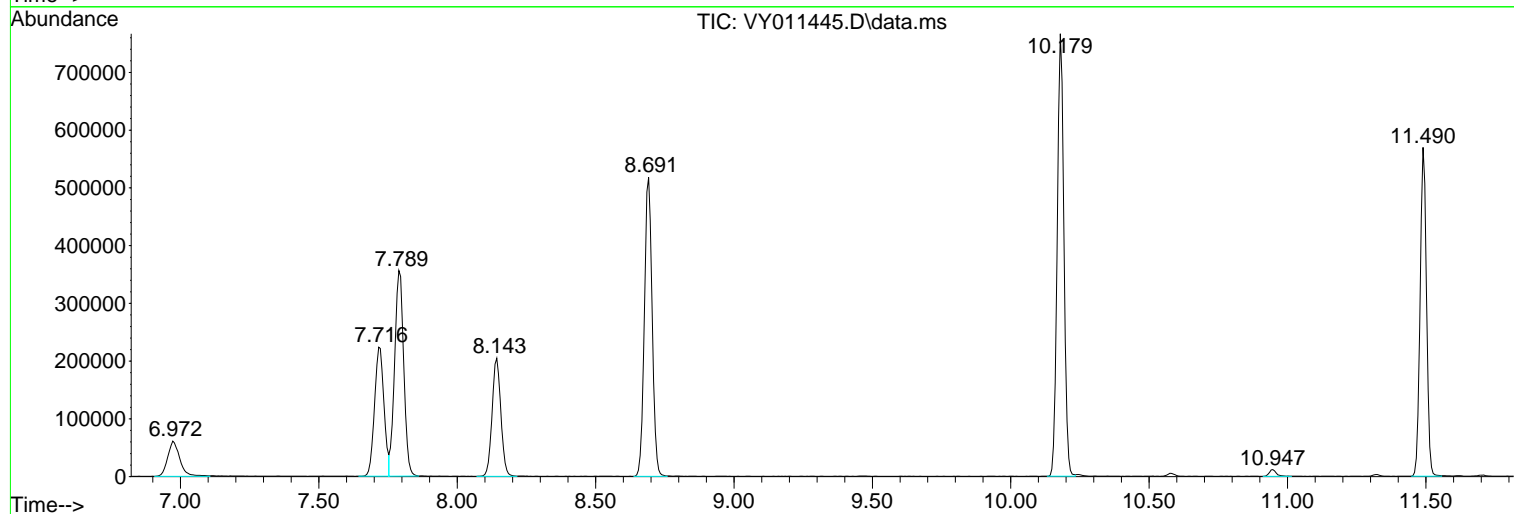
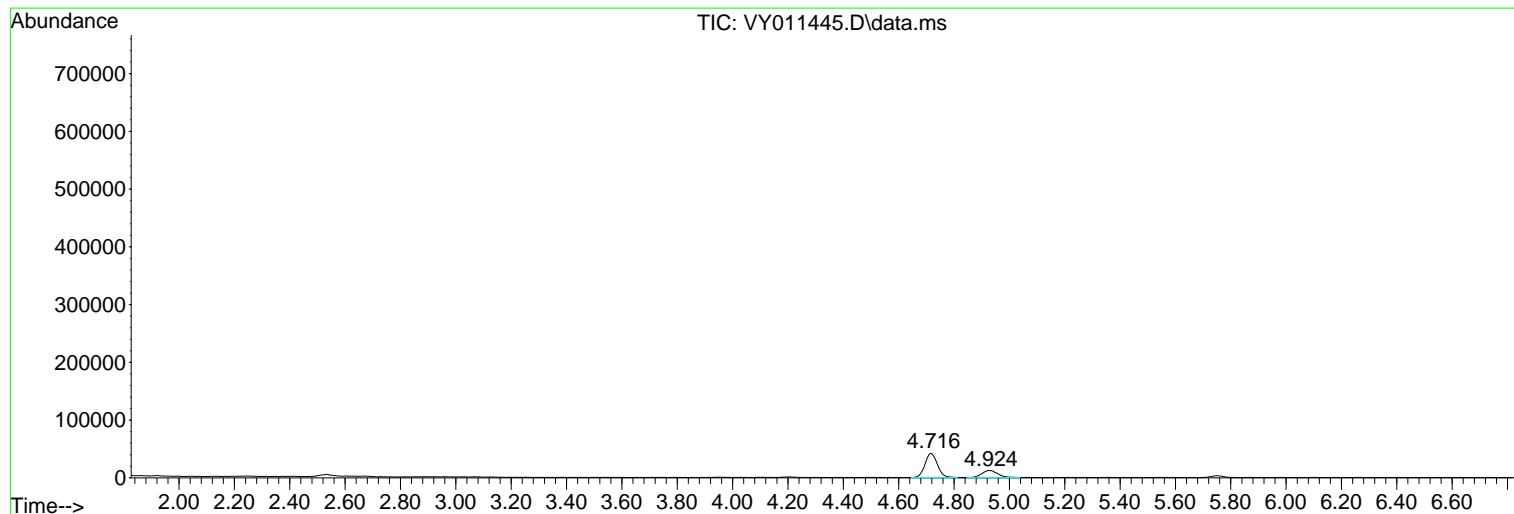
Sum of corrected areas: 6554274

Data Path : Z:\voasrv\HPCHEM1\MSVOA_Y\Data\VY111422\
Data File : VY011445.D
Acq On : 14 Nov 2022 17:18
Operator : KP/MD
Sample : N5528-01
Misc : 5.03g/5.0mL/MSVOA_Y/SOIL
ALS Vial : 14 Sample Multiplier: 1

Instrument :
MSVOA_Y
ClientSampleId :
SAMPLE-3

Quant Method : Z:\voasrv\HPCHEM1\MSVOA_Y\methods\82Y111022S.M
Quant Title : SW846 8260

TIC Library : C:\Database\NIST20.L
TIC Integration Parameters: LSCINT.P



Library Search Compound Report

Data Path : Z:\voasrv\HPCHEM1\MSVOA_Y\Data\VY111422\
Data File : VY011445.D
Acq On : 14 Nov 2022 17:18
Operator : KP/MD
Sample : N5528-01
Misc : 5.03g/5.0mL/MSVOA_Y/SOIL
ALS Vial : 14 Sample Multiplier: 1

Instrument :
MSVOA_Y
ClientSampleId :
SAMPLE-3

Quant Method : Z:\voasrv\HPCHEM1\MSVOA_Y\methods\82Y111022S.M
Quant Title : SW846 8260

TIC Library : C:\Database\NIST20.L
TIC Integration Parameters: LSCINT.P

No Library Search Compounds Detected

Data Path : Z:\voasrv\HPCHEM1\MSVOA_Y\Data\VY111422\
Data File : VY011445.D
Acq On : 14 Nov 2022 17:18
Operator : KP/MD
Sample : N5528-01
Misc : 5.03g/5.0mL/MSVOA_Y/SOIL
ALS Vial : 14 Sample Multiplier: 1

Instrument :
MSVOA_Y
ClientSampleId :
SAMPLE-3

Quant Method : Z:\voasrv\HPCHEM1\MSVOA_Y\methods\82Y111022S.M
Quant Title : SW846 8260

TIC Library : C:\Database\NIST0.L
TIC Integration Parameters: LSCINT.P

TIC Top Hit name	RT	EstConc	Units	Response	#	RT	Resp	Conc
------------------	----	---------	-------	----------	---	----	------	------
