

Data Path : Z:\voasrv\HPCHEM1\MSVOA_Y\Data\VY111621\
 Data File : VY006764.D
 Acq On : 16 Nov 2021 16:13
 Operator : SY/MD
 Sample : M4674-05
 Misc : 5.01G/5ML/MSVOA_Y/SOIL
 ALS Vial : 17 Sample Multiplier: 1

Instrument :
 MSVOA_Y
 ClientSampleId :
 MF-SOIL-P3

Quant Time: Nov 17 04:08:11 2021
 Quant Method : Z:\voasrv\HPCHEM1\MSVOA_Y\methods\82Y111521S.M
 Quant Title : SW846 8260
 QLast Update : Tue Nov 16 04:20:03 2021
 Response via : Initial Calibration

Compound	R.T.	QIon	Response	Conc	Units	Dev(Min)

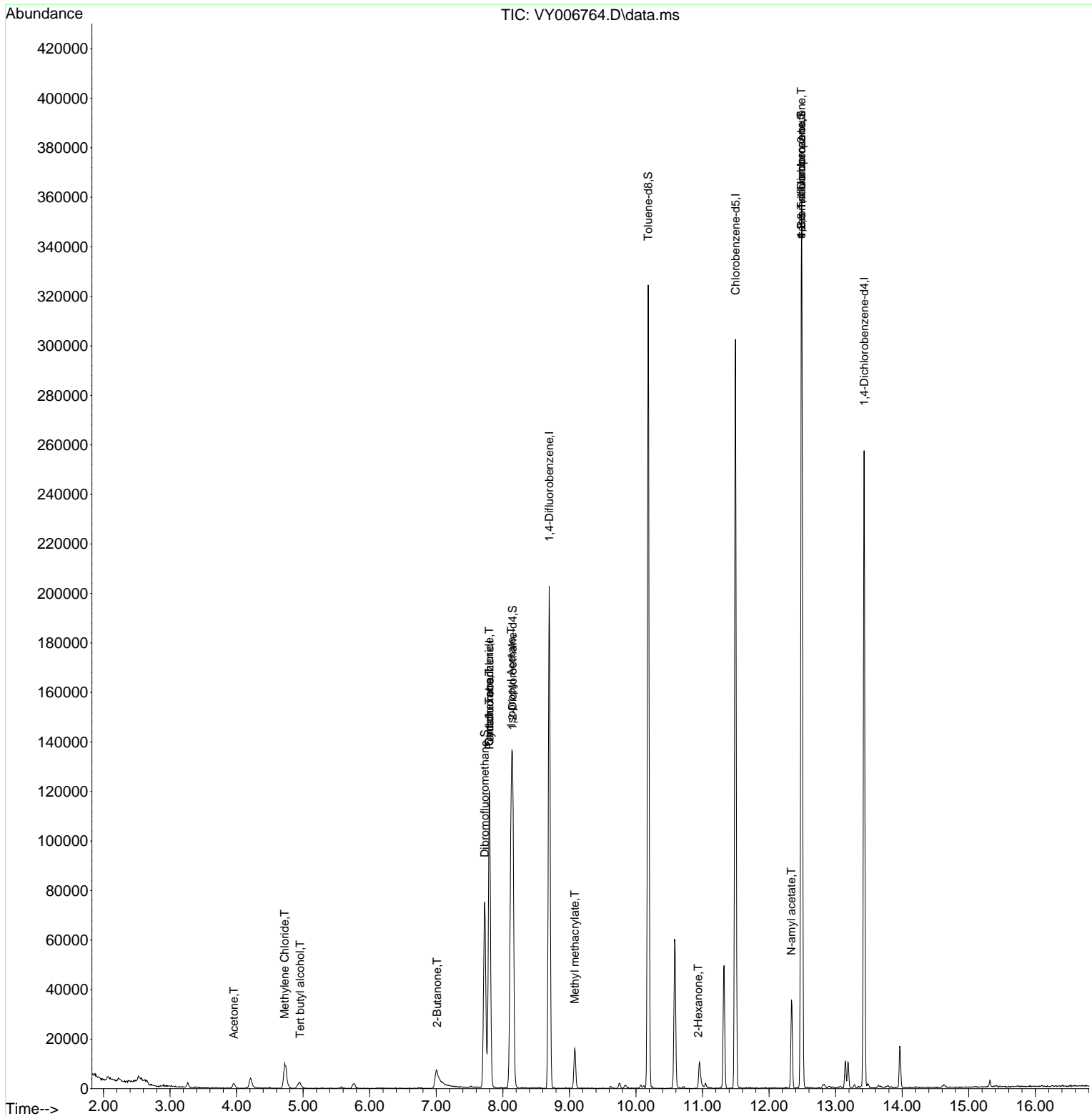
Internal Standards						
1) Pentafluorobenzene	7.801	168	89950	50.000	ug/l	0.00
34) 1,4-Difluorobenzene	8.697	114	156413	50.000	ug/l	0.00
63) Chlorobenzene-d5	11.496	117	148037	50.000	ug/l	0.00
72) 1,4-Dichlorobenzene-d4	13.428	152	59109	50.000	ug/l	0.00
System Monitoring Compounds						
33) 1,2-Dichloroethane-d4	8.149	65	73260	62.143	ug/l	0.00
Spiked Amount	50.000	Range 50 - 163	Recovery	=	124.280%	
35) Dibromofluoromethane	7.728	113	48407	50.385	ug/l	0.00
Spiked Amount	50.000	Range 54 - 147	Recovery	=	100.760%	
50) Toluene-d8	10.185	98	198512	49.931	ug/l	0.00
Spiked Amount	50.000	Range 49 - 140	Recovery	=	99.860%	
62) 4-Bromofluorobenzene	12.483	95	63081	47.065	ug/l	0.00
Spiked Amount	50.000	Range 25 - 144	Recovery	=	94.120%	
Target Compounds						
						Qvalue
11) Tert butyl alcohol	4.954	59	3112	17.553	ug/l #	72
16) Acetone	3.960	43	3524	9.839	ug/l	98
20) Methylene Chloride	4.722	84	6582	2.932	ug/l	92
25) 2-Butanone	7.015	43	737	12.850	ug/l #	52
31) Cyclohexane	7.795	56	2444	1.180	ug/l #	38
38) Carbon Tetrachloride	7.795	117	9045	5.201	ug/l #	17
43) Isopropyl Acetate	8.130	43	3092	1.450	ug/l #	19
48) Methyl methacrylate	9.081	41	4264	4.221	ug/l #	41
59) 2-Hexanone	10.935	43	170	24.003	ug/l #	28
74) N-amyl acetate	12.337	43	944	3.698	ug/l #	12
76) 1,2,3-Trichloropropane	12.483	75	38443	59.820	ug/l #	100
81) trans-1,4-Dichloro-2-b...	12.483	75	38443	118.531	ug/l #	7

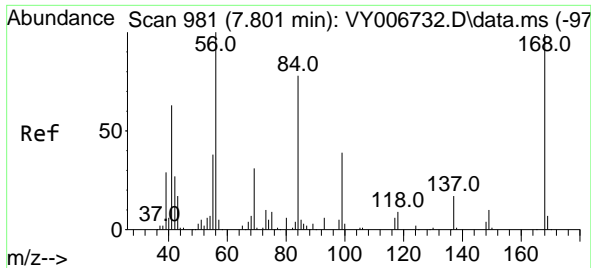
(#) = qualifier out of range (m) = manual integration (+) = signals summed

Data Path : Z:\voasrv\HPCHEM1\MSVOA_Y\Data\VY111621\
 Data File : VY006764.D
 Acq On : 16 Nov 2021 16:13
 Operator : SY/MD
 Sample : M4674-05
 Misc : 5.01G/5ML/MSVOA_Y/SOIL
 ALS Vial : 17 Sample Multiplier: 1

Instrument :
 MSVOA_Y
 ClientSampleId :
 MF-SOIL-P3

Quant Time: Nov 17 04:08:11 2021
 Quant Method : Z:\voasrv\HPCHEM1\MSVOA_Y\methods\82Y111521S.M
 Quant Title : SW846 8260
 QLast Update : Tue Nov 16 04:20:03 2021
 Response via : Initial Calibration

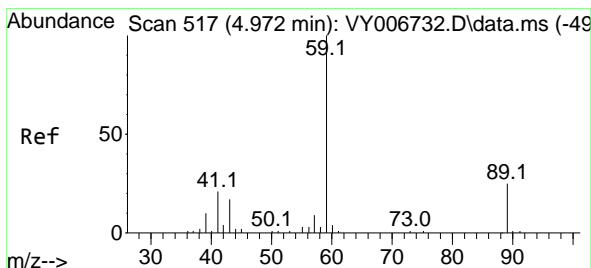
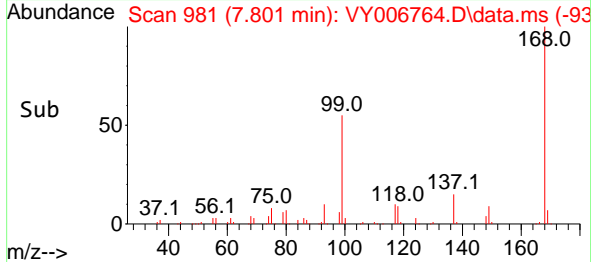
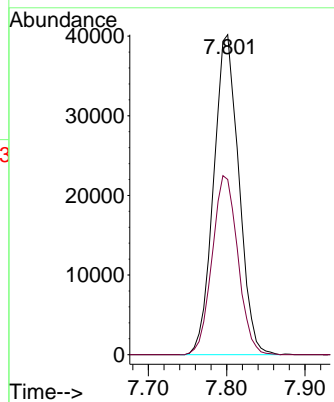
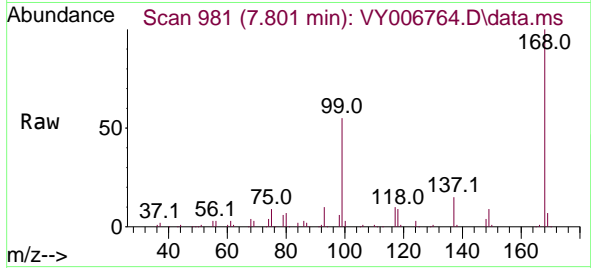




#1
 Pentafluorobenzene
 Concen: 50.000 ug/l
 RT: 7.801 min Scan# 91
 Delta R.T. 0.000 min
 Lab File: VY006764.D
 Acq: 16 Nov 2021 16:13

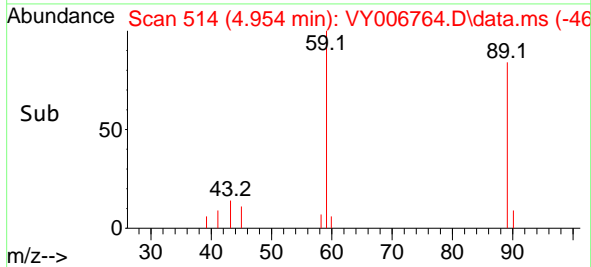
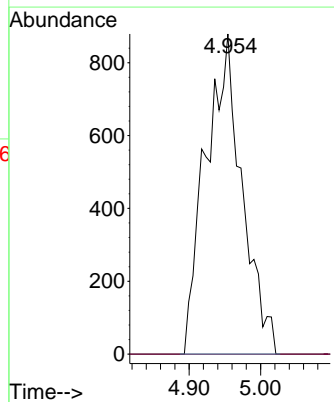
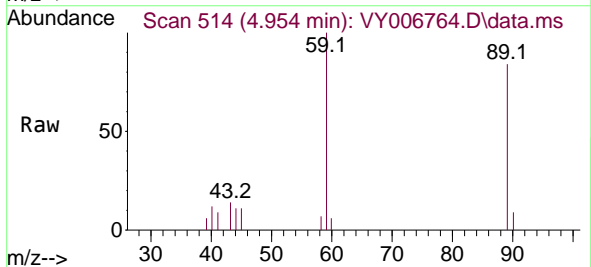
Instrument :
 MSVOA_Y
 ClientSampleId :
 MF-SOIL-P3

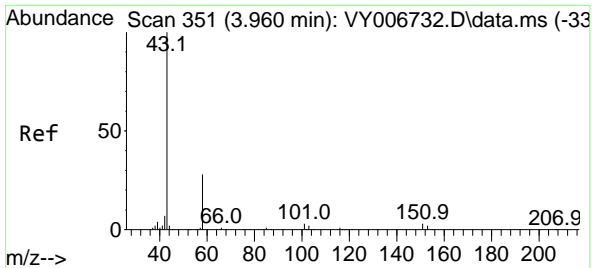
Tgt Ion:168 Resp: 89950
 Ion Ratio Lower Upper
 168 100
 99 54.7 44.8 67.2



#11
 Tert butyl alcohol
 Concen: 17.553 ug/l
 RT: 4.954 min Scan# 514
 Delta R.T. -0.018 min
 Lab File: VY006764.D
 Acq: 16 Nov 2021 16:13

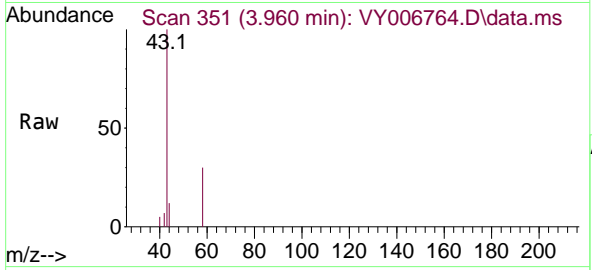
Tgt Ion: 59 Resp: 3112
 Ion Ratio Lower Upper
 59 100
 57 0.0 8.2 12.4#



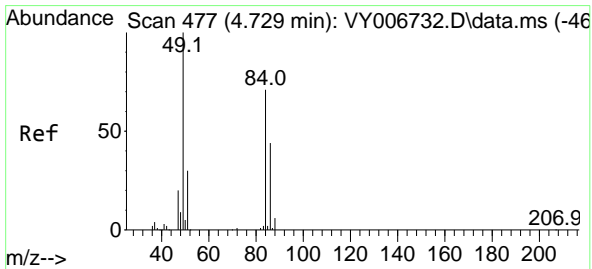
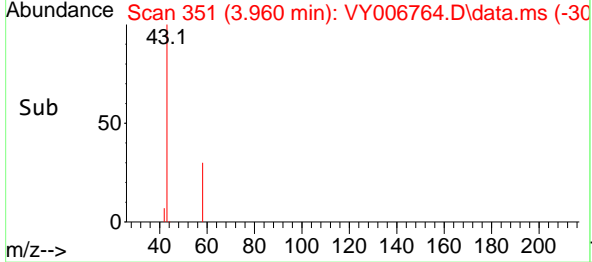
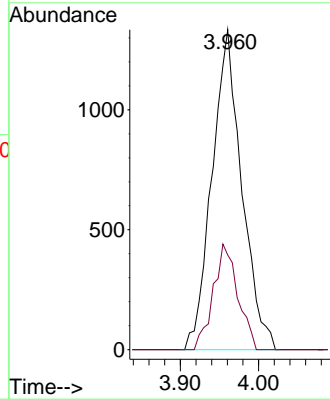


#16
 Acetone
 Concen: 9.839 ug/l
 RT: 3.960 min Scan# 31
 Delta R.T. -0.000 min
 Lab File: VY006764.D
 Acq: 16 Nov 2021 16:13

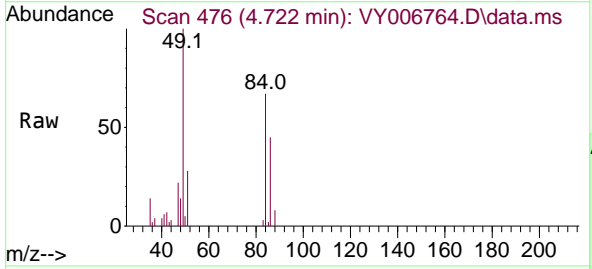
Instrument :
 MSVOA_Y
 ClientSampleId :
 MF-SOIL-P3



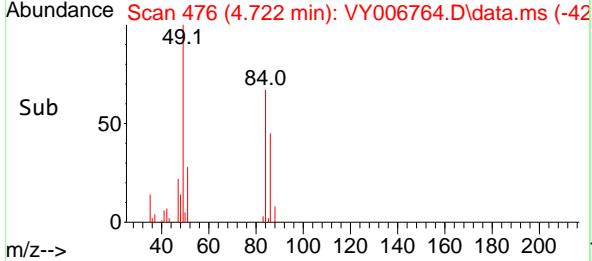
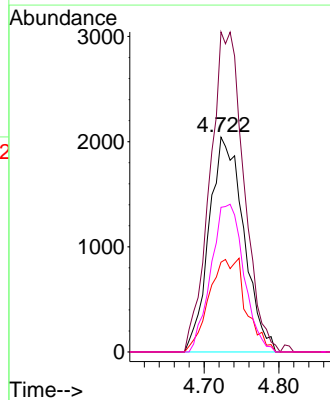
Tgt Ion: 43 Resp: 3524
 Ion Ratio Lower Upper
 43 100
 58 29.6 22.9 34.3

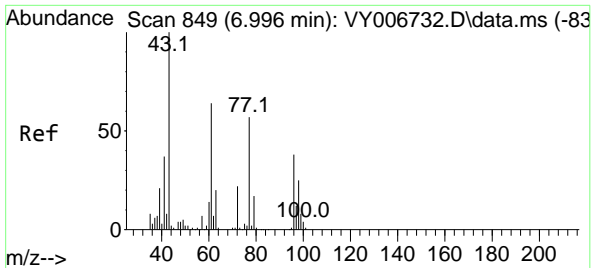


#20
 Methylene Chloride
 Concen: 2.932 ug/l
 RT: 4.722 min Scan# 476
 Delta R.T. -0.007 min
 Lab File: VY006764.D
 Acq: 16 Nov 2021 16:13



Tgt Ion: 84 Resp: 6582
 Ion Ratio Lower Upper
 84 100
 49 149.0 107.8 161.8
 51 41.8 32.8 49.2
 86 67.3 50.6 75.8

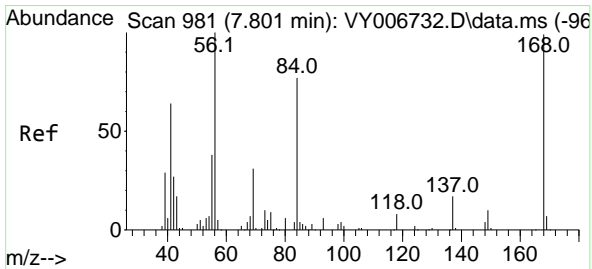
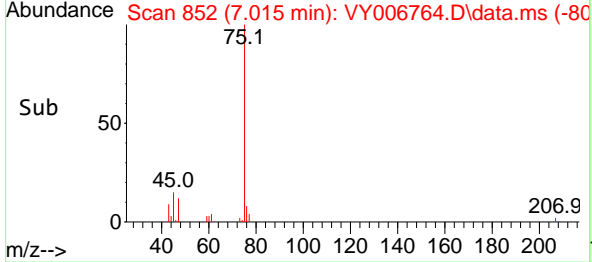
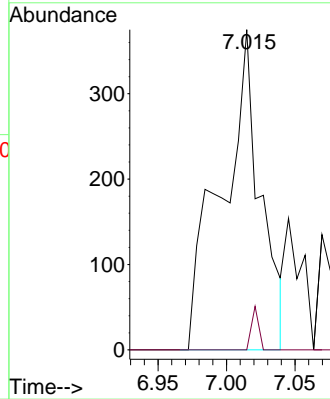
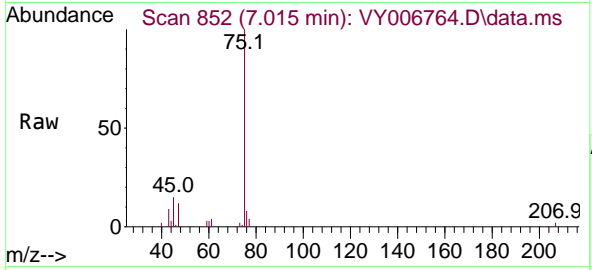




#25
 2-Butanone
 Concen: 12.850 ug/l
 RT: 7.015 min Scan# 81
 Delta R.T. 0.019 min
 Lab File: VY006764.D
 Acq: 16 Nov 2021 16:13

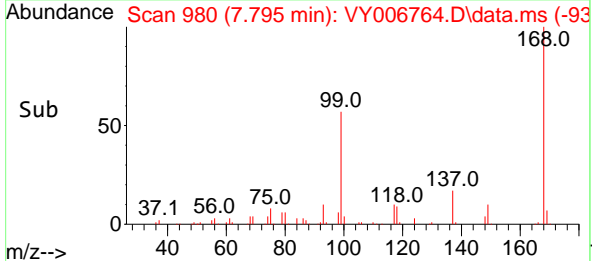
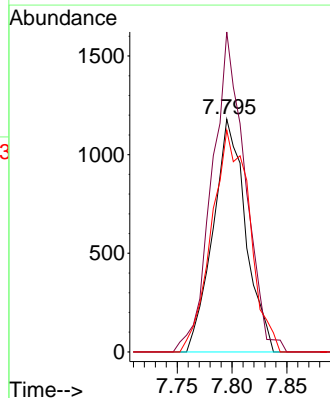
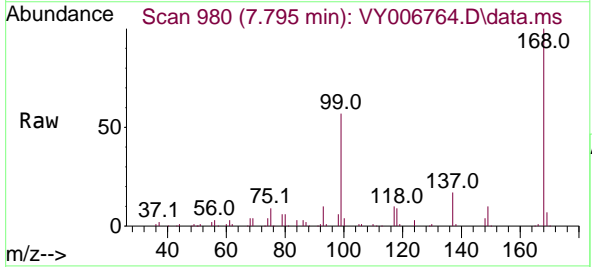
Instrument : MSVOA_Y
 ClientSampleId : MF-SOIL-P3

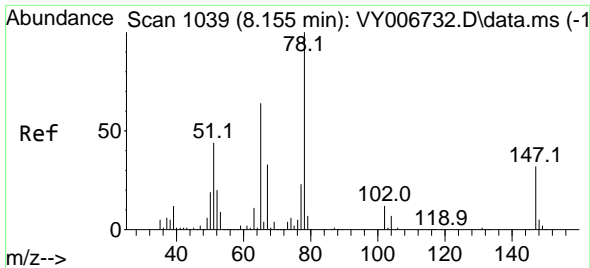
Tgt Ion: 43 Resp: 737
 Ion Ratio Lower Upper
 43 100
 72 0.0 18.9 28.3#



#31
 Cyclohexane
 Concen: 1.180 ug/l
 RT: 7.795 min Scan# 980
 Delta R.T. -0.006 min
 Lab File: VY006764.D
 Acq: 16 Nov 2021 16:13

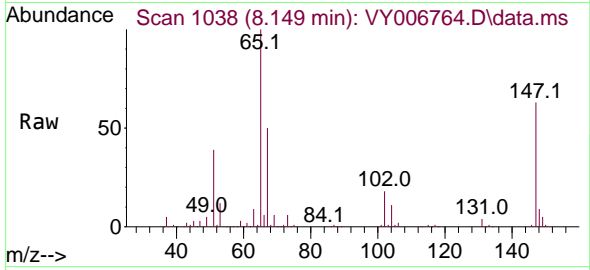
Tgt Ion: 56 Resp: 2444
 Ion Ratio Lower Upper
 56 100
 69 133.2 26.6 40.0#
 84 95.3 65.0 97.4



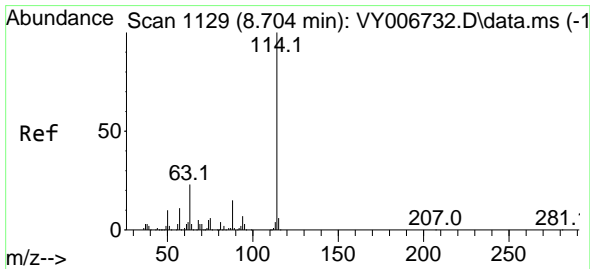
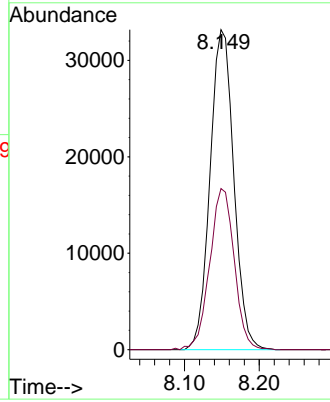
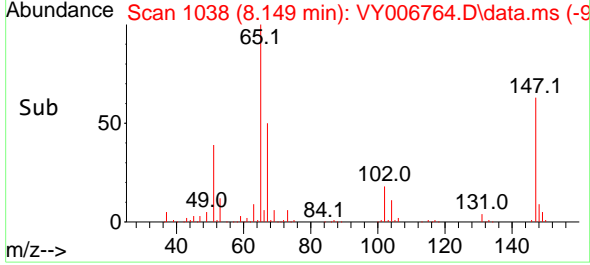


#33
 1,2-Dichloroethane-d4
 Concen: 62.143 ug/l
 RT: 8.149 min Scan# 1038
 Delta R.T. -0.006 min
 Lab File: VY006764.D
 Acq: 16 Nov 2021 16:13

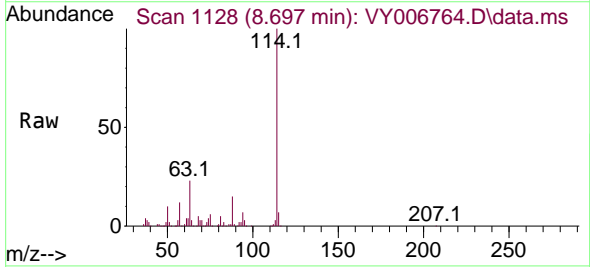
Instrument : MSVOA_Y
 ClientSampleId : MF-SOIL-P3



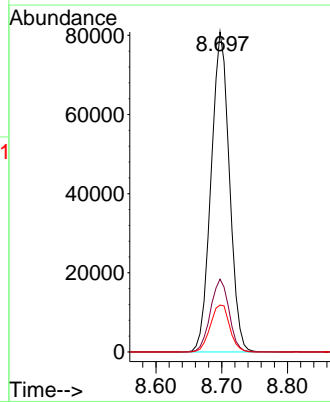
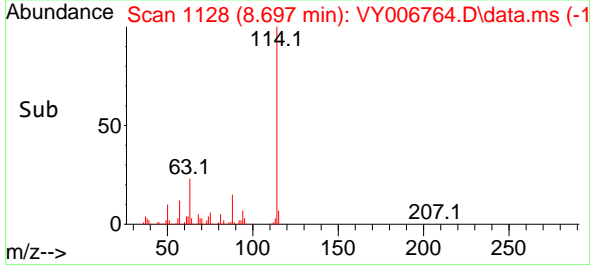
Tgt Ion: 65 Resp: 73260
 Ion Ratio Lower Upper
 65 100
 67 52.0 0.0 98.2

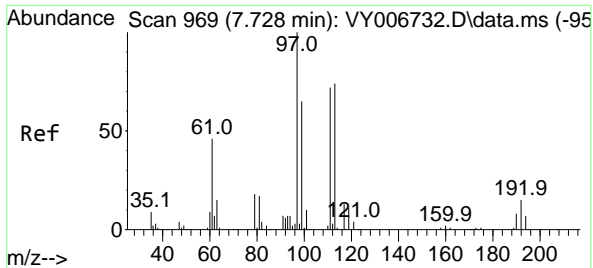


#34
 1,4-Difluorobenzene
 Concen: 50.000 ug/l
 RT: 8.697 min Scan# 1128
 Delta R.T. -0.006 min
 Lab File: VY006764.D
 Acq: 16 Nov 2021 16:13



Tgt Ion: 114 Resp: 156413
 Ion Ratio Lower Upper
 114 100
 63 22.7 0.0 45.0
 88 14.6 0.0 30.6

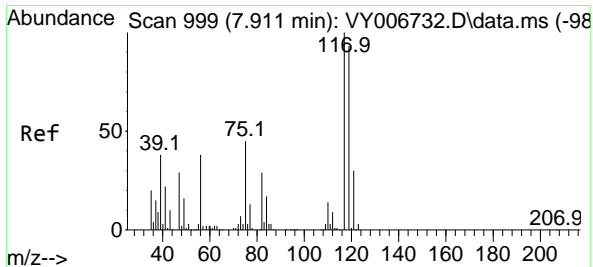
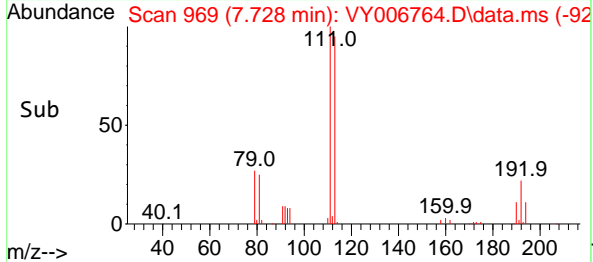
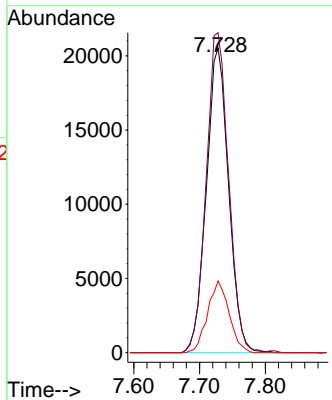
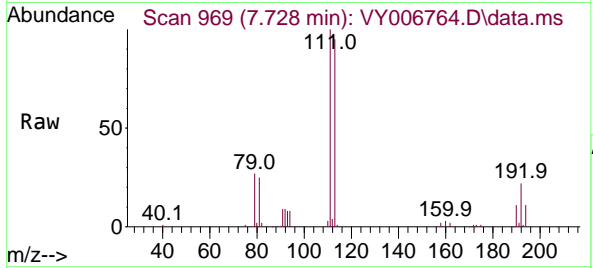




#35
 Dibromofluoromethane
 Concen: 50.385 ug/l
 RT: 7.728 min Scan# 90
 Delta R.T. -0.000 min
 Lab File: VY006764.D
 Acq: 16 Nov 2021 16:13

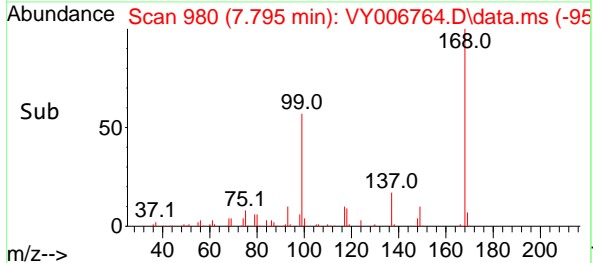
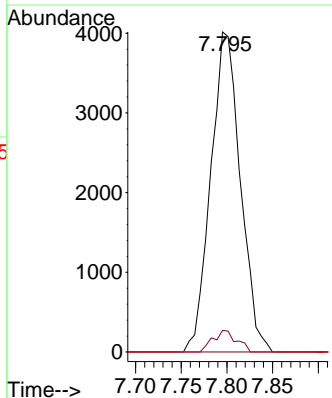
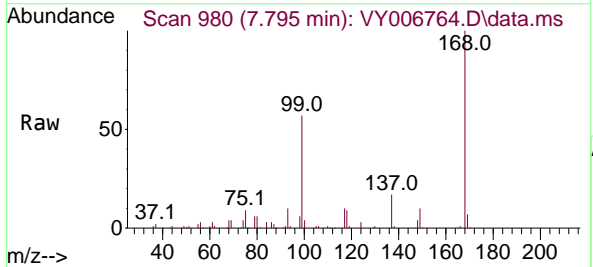
Instrument : MSVOA_Y
 ClientSampleId : MF-SOIL-P3

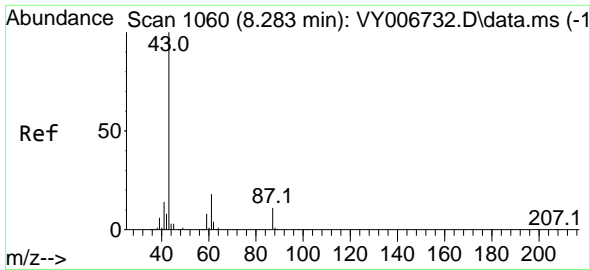
Tgt Ion	Resp	Lower	Upper
113	100		
111	105.7	82.3	123.5
192	22.8	17.4	26.2



#38
 Carbon Tetrachloride
 Concen: 5.201 ug/l
 RT: 7.795 min Scan# 980
 Delta R.T. -0.116 min
 Lab File: VY006764.D
 Acq: 16 Nov 2021 16:13

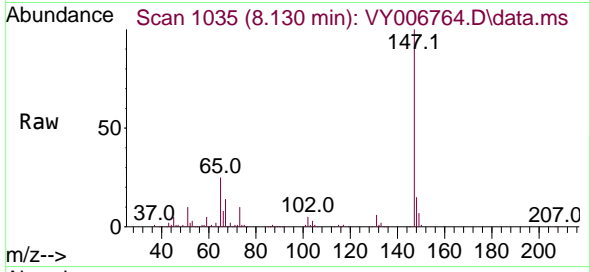
Tgt Ion	Resp	Lower	Upper
117	100		
119	6.7	76.6	115.0#
121	0.0	24.7	37.1#



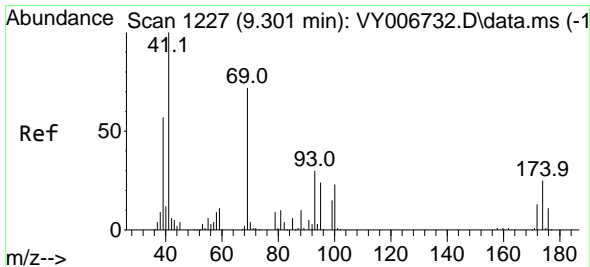
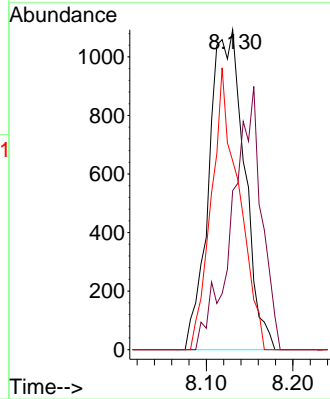
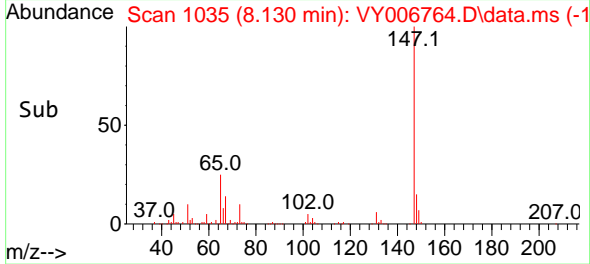


#43
 Isopropyl Acetate
 Concen: 1.450 ug/l
 RT: 8.130 min Scan# 1191
 Delta R.T. -0.152 min
 Lab File: VY006764.D
 Acq: 16 Nov 2021 16:13

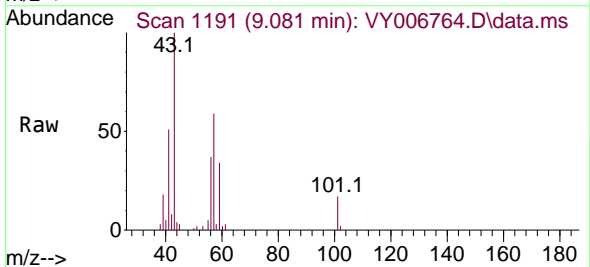
Instrument : MSVOA_Y
 ClientSampleId : MF-SOIL-P3



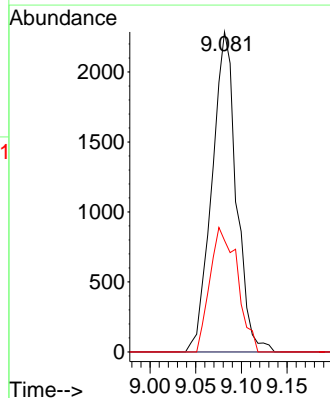
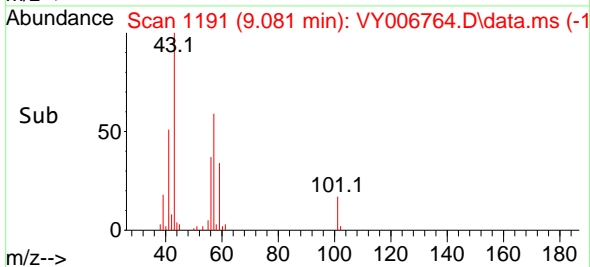
Tgt Ion: 43 Resp: 3092
 Ion Ratio Lower Upper
 43 100
 61 0.0 20.5 30.7#
 87 68.4 9.0 13.6#

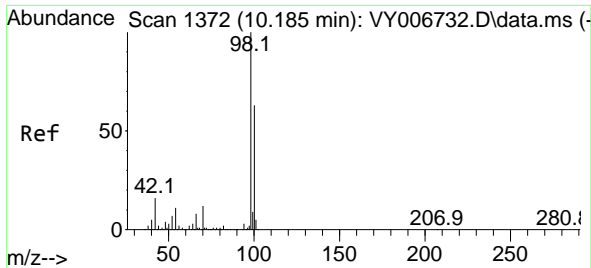


#48
 Methyl methacrylate
 Concen: 4.221 ug/l
 RT: 9.081 min Scan# 1191
 Delta R.T. -0.220 min
 Lab File: VY006764.D
 Acq: 16 Nov 2021 16:13



Tgt Ion: 41 Resp: 4264
 Ion Ratio Lower Upper
 41 100
 69 0.0 60.4 90.6#
 39 43.6 48.2 72.2#

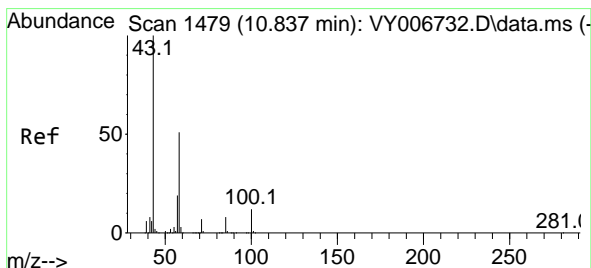
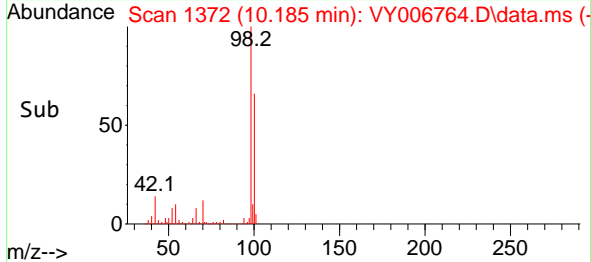
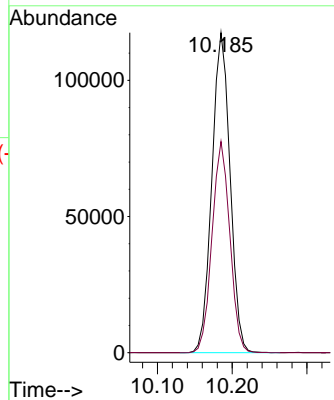
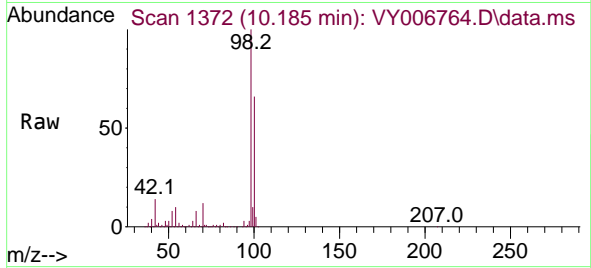




#50
 Toluene-d8
 Concen: 49.931 ug/l
 RT: 10.185 min Scan# 111
 Delta R.T. -0.000 min
 Lab File: VY006764.D
 Acq: 16 Nov 2021 16:13

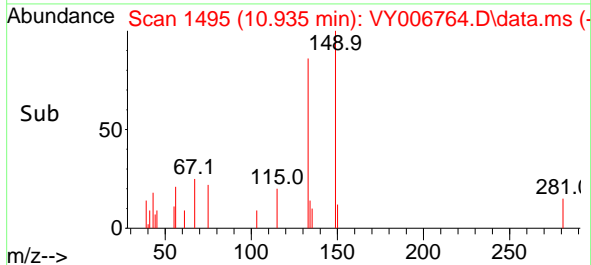
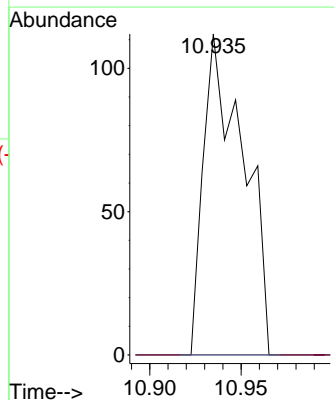
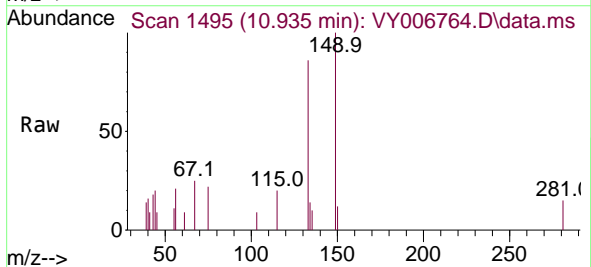
Instrument :
 MSVOA_Y
 ClientSampleId :
 MF-SOIL-P3

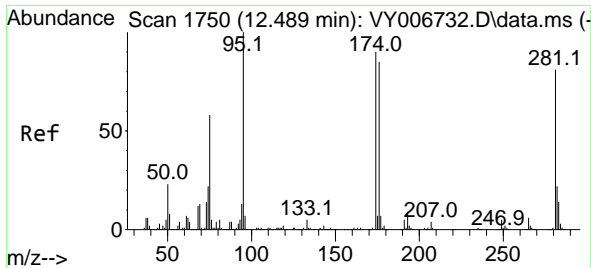
Tgt Ion: 98 Resp: 198512
 Ion Ratio Lower Upper
 98 100
 100 64.7 50.9 76.3



#59
 2-Hexanone
 Concen: 24.003 ug/l
 RT: 10.935 min Scan# 1495
 Delta R.T. 0.098 min
 Lab File: VY006764.D
 Acq: 16 Nov 2021 16:13

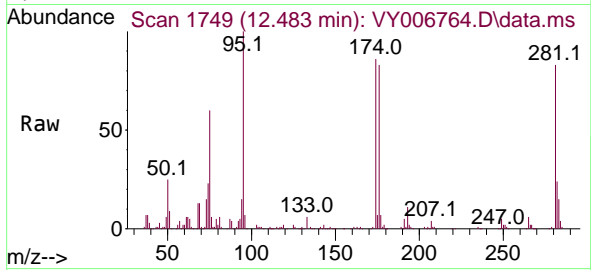
Tgt Ion: 43 Resp: 170
 Ion Ratio Lower Upper
 43 100
 58 0.0 24.6 73.6#



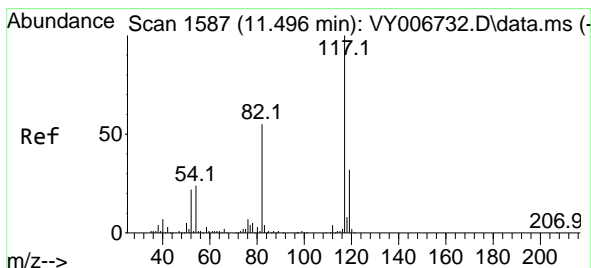
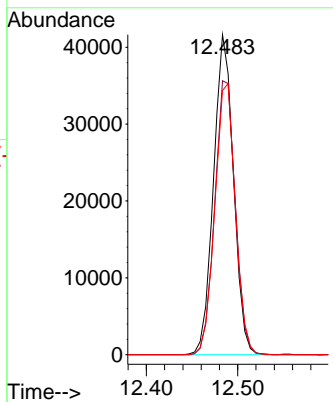
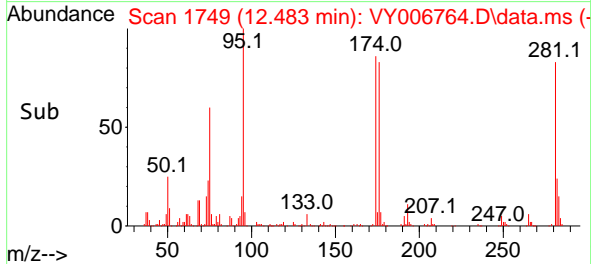


#62
 4-Bromofluorobenzene
 Concen: 47.065 ug/l
 RT: 12.483 min Scan# 1749
 Delta R.T. -0.006 min
 Lab File: VY006764.D
 Acq: 16 Nov 2021 16:13

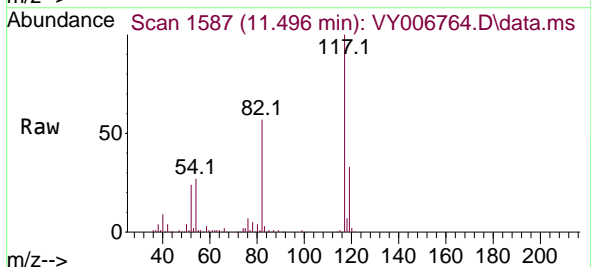
Instrument : MSVOA_Y
 ClientSampleId : MF-SOIL-P3



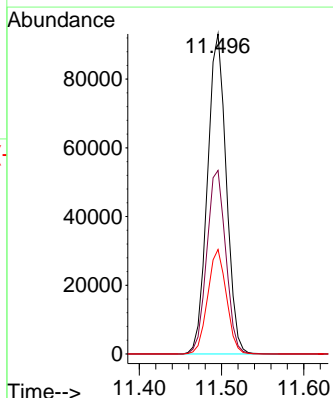
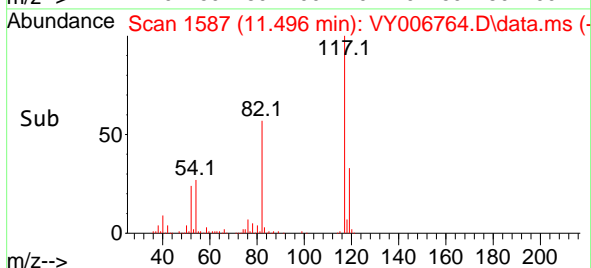
Tgt Ion: 95 Resp: 63081
 Ion Ratio Lower Upper
 95 100
 174 88.6 0.0 177.0
 176 87.1 0.0 169.4

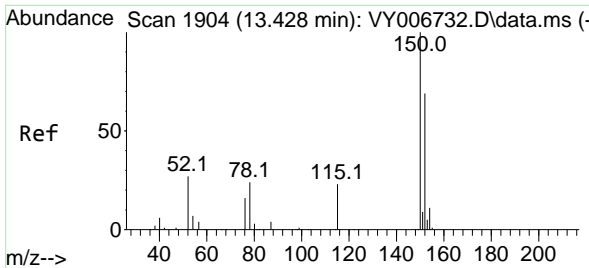


#63
 Chlorobenzene-d5
 Concen: 50.000 ug/l
 RT: 11.496 min Scan# 1587
 Delta R.T. -0.000 min
 Lab File: VY006764.D
 Acq: 16 Nov 2021 16:13



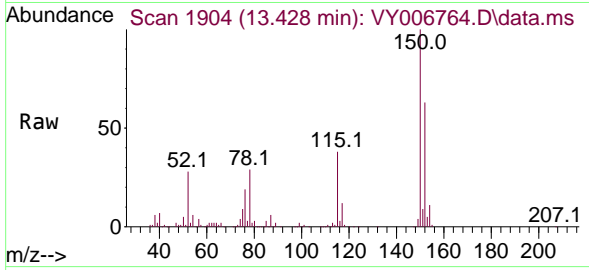
Tgt Ion: 117 Resp: 148037
 Ion Ratio Lower Upper
 117 100
 82 57.4 45.7 68.5
 119 32.7 25.5 38.3





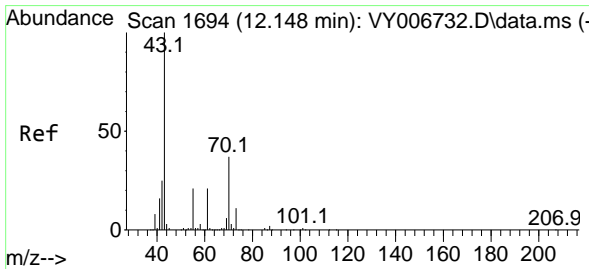
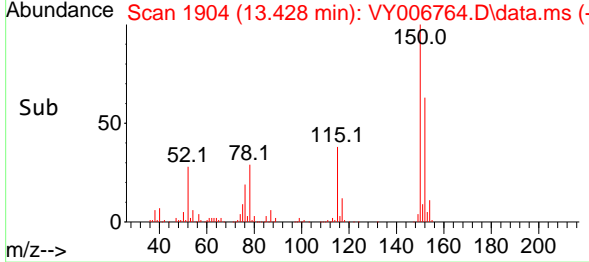
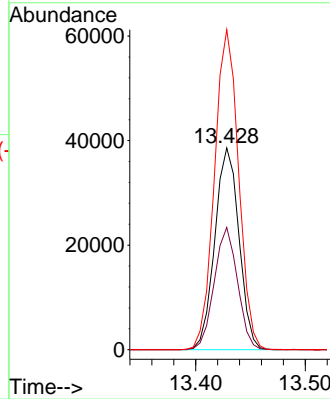
#72
 1,4-Dichlorobenzene-d4
 Concen: 50.000 ug/l
 RT: 13.428 min Scan# 1904
 Delta R.T. 0.000 min
 Lab File: VY006764.D
 Acq: 16 Nov 2021 16:13

Instrument : MSVOA_Y
 ClientSampleId : MF-SOIL-P3

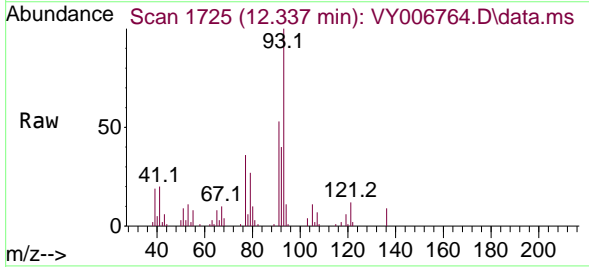


Tgt Ion:152 Resp: 59109

Ion	Ratio	Lower	Upper
152	100		
115	58.4	28.5	85.5
150	158.2	0.0	348.2

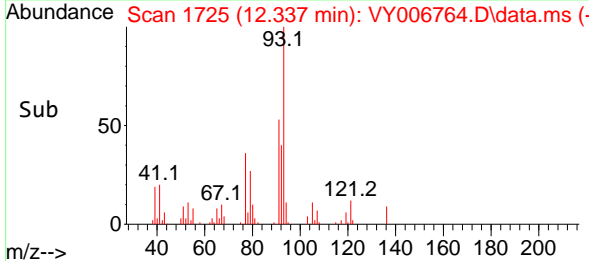
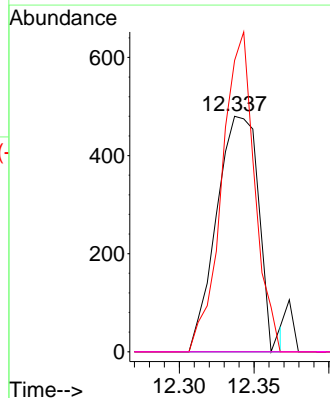


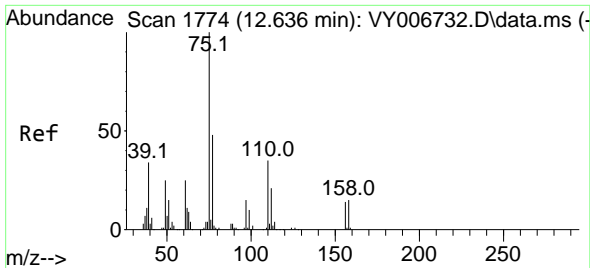
#74
 N-amy1 acetate
 Concen: 3.698 ug/l
 RT: 12.337 min Scan# 1725
 Delta R.T. 0.189 min
 Lab File: VY006764.D
 Acq: 16 Nov 2021 16:13



Tgt Ion: 43 Resp: 944

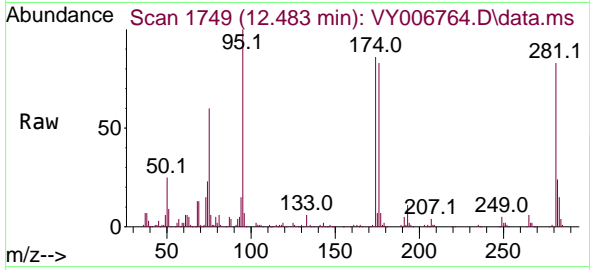
Ion	Ratio	Lower	Upper
43	100		
70	0.0	29.4	44.0#
55	104.9	18.1	27.1#
61	0.0	17.6	26.4#



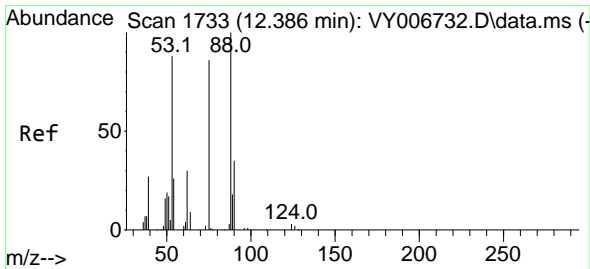
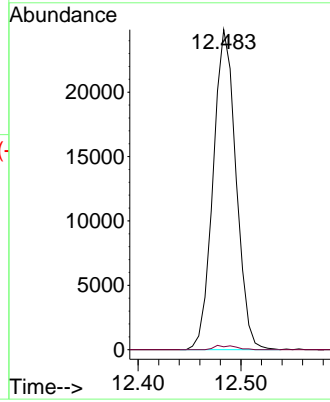
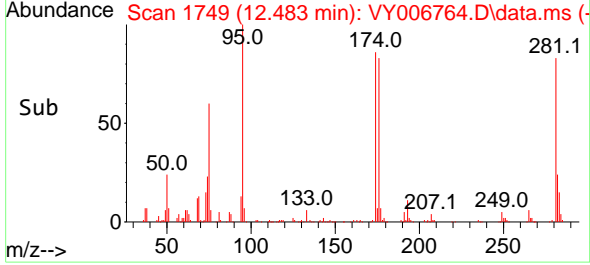


#76
 1,2,3-Trichloropropane
 Concen: 59.820 ug/l
 RT: 12.483 min Scan# 1749
 Delta R.T. -0.153 min
 Lab File: VY006764.D
 Acq: 16 Nov 2021 16:13

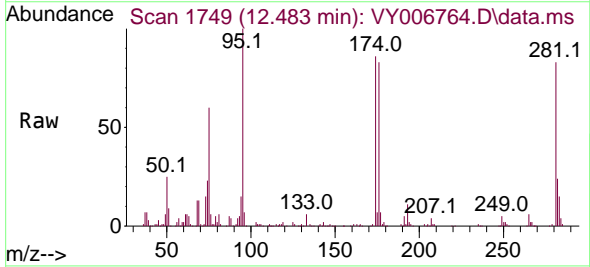
Instrument : MSVOA_Y
 ClientSampleId : MF-SOIL-P3



Tgt Ion: 75 Resp: 38443
 Ion Ratio Lower Upper
 75 100
 77 1.2 0.0 0.0#



#81
 trans-1,4-Dichloro-2-butene
 Concen: 118.531 ug/l
 RT: 12.483 min Scan# 1749
 Delta R.T. 0.098 min
 Lab File: VY006764.D
 Acq: 16 Nov 2021 16:13



Tgt Ion: 75 Resp: 38443
 Ion Ratio Lower Upper
 75 100
 53 0.0 85.8 128.6#
 89 1.0 39.3 58.9#

