

Data Path : Z:\voasrv\HPCHEM1\MSVOA\_Y\Data\VY111621\  
 Data File : VY006773.D  
 Acq On : 16 Nov 2021 19:46  
 Operator : SY/MD  
 Sample : M4680-02  
 Misc : 5.73G/5ML/MSVOA\_Y/SOIL  
 ALS Vial : 26 Sample Multiplier: 1

Instrument :  
 MSVOA\_Y  
 ClientSampleId :  
 COMP-2

Quant Time: Nov 17 04:09:38 2021  
 Quant Method : Z:\voasrv\HPCHEM1\MSVOA\_Y\methods\82Y111521S.M  
 Quant Title : SW846 8260  
 QLast Update : Tue Nov 16 04:20:03 2021  
 Response via : Initial Calibration

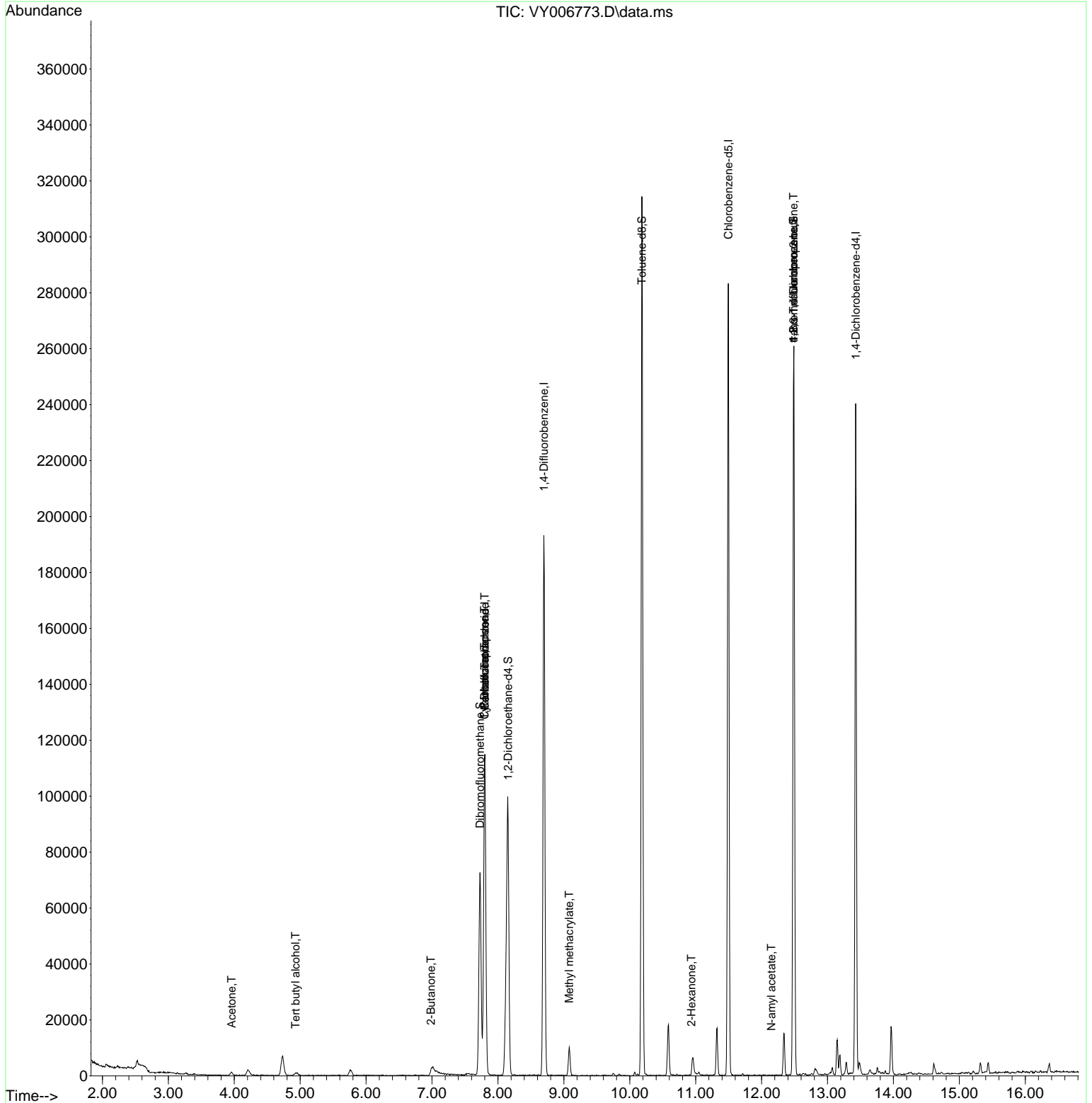
Compound	R.T.	QIon	Response	Conc	Units	Dev(Min)
-----						
Internal Standards						
1) Pentafluorobenzene	7.801	168	87054	50.000	ug/l	0.00
34) 1,4-Difluorobenzene	8.697	114	150060	50.000	ug/l	0.00
63) Chlorobenzene-d5	11.496	117	138699	50.000	ug/l	0.00
72) 1,4-Dichlorobenzene-d4	13.428	152	54749	50.000	ug/l	0.00
System Monitoring Compounds						
33) 1,2-Dichloroethane-d4	8.155	65	69217	60.666	ug/l	0.00
Spiked Amount	50.000	Range	50 - 163	Recovery	=	121.340%
35) Dibromofluoromethane	7.728	113	47657	51.704	ug/l	0.00
Spiked Amount	50.000	Range	54 - 147	Recovery	=	103.400%
50) Toluene-d8	10.185	98	193556	50.746	ug/l	0.00
Spiked Amount	50.000	Range	49 - 140	Recovery	=	101.500%
62) 4-Bromofluorobenzene	12.483	95	57760	44.919	ug/l	0.00
Spiked Amount	50.000	Range	25 - 144	Recovery	=	89.840%
Target Compounds						
					Qvalue	
11) Tert butyl alcohol	4.930	59	1472	8.579	ug/l #	72
16) Acetone	3.960	43	2132	6.150	ug/l	92
25) 2-Butanone	6.984	43	580	12.598	ug/l #	52
31) Cyclohexane	7.795	56	2391	1.192	ug/l #	21
36) 1,1-Dichloropropene	7.795	75	7653	4.692	ug/l #	51
38) Carbon Tetrachloride	7.801	117	9033	5.414	ug/l #	16
48) Methyl methacrylate	9.081	41	2575	2.657	ug/l #	36
59) 2-Hexanone	10.935	43	19	23.838	ug/l #	28
74) N-amyl acetate	12.148	43	22	3.169	ug/l #	47
76) 1,2,3-Trichloropropane	12.483	75	35635	59.866	ug/l #	100
81) trans-1,4-Dichloro-2-b...	12.483	75	35635	118.623	ug/l #	7
-----						

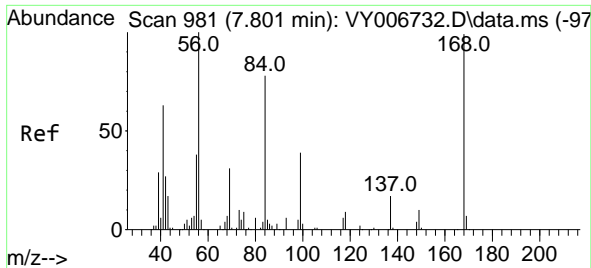
(#) = qualifier out of range (m) = manual integration (+) = signals summed

Data Path : Z:\voasrv\HPCHEM1\MSVOA\_Y\Data\VY111621\  
 Data File : VY006773.D  
 Acq On : 16 Nov 2021 19:46  
 Operator : SY/MD  
 Sample : M4680-02  
 Misc : 5.73G/5ML/MSVOA\_Y/SOIL  
 ALS Vial : 26 Sample Multiplier: 1

**Instrument :**  
 MSVOA\_Y  
**ClientSampleId :**  
 COMP-2

Quant Time: Nov 17 04:09:38 2021  
 Quant Method : Z:\voasrv\HPCHEM1\MSVOA\_Y\methods\82Y111521S.M  
 Quant Title : SW846 8260  
 QLast Update : Tue Nov 16 04:20:03 2021  
 Response via : Initial Calibration

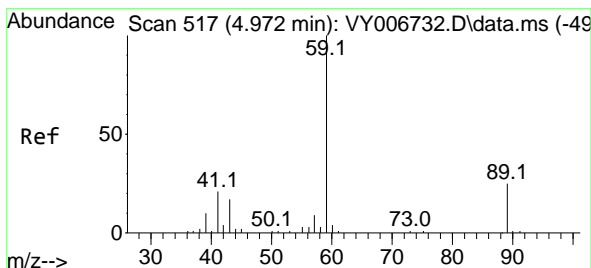
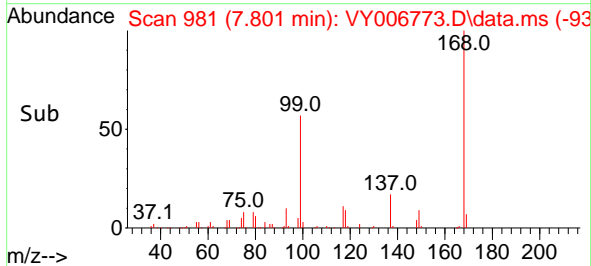
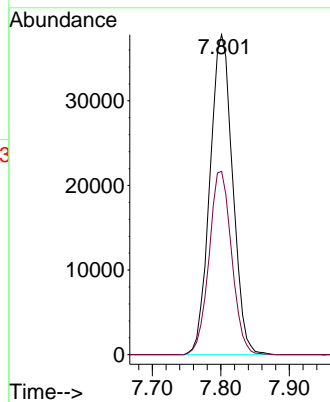
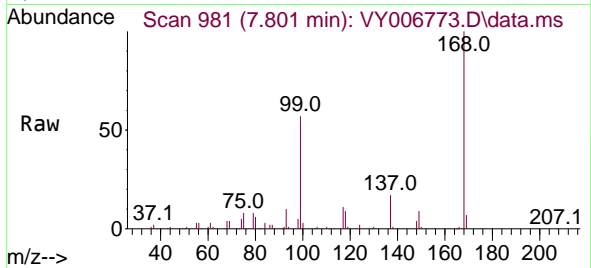




#1  
 Pentafluorobenzene  
 Concen: 50.000 ug/l  
 RT: 7.801 min Scan# 91  
 Delta R.T. 0.000 min  
 Lab File: VY006773.D  
 Acq: 16 Nov 2021 19:46

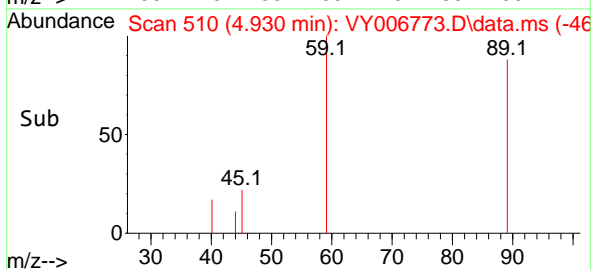
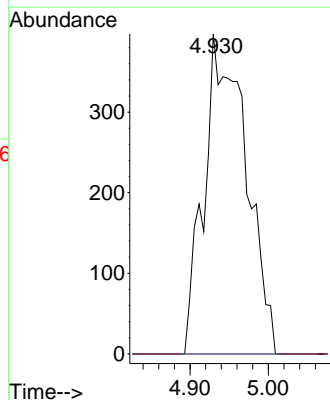
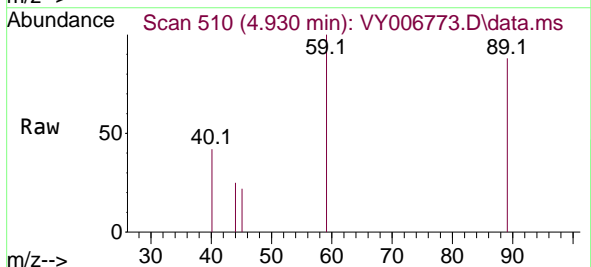
Instrument :  
 MSVOA\_Y  
 ClientSampleId :  
 COMP-2

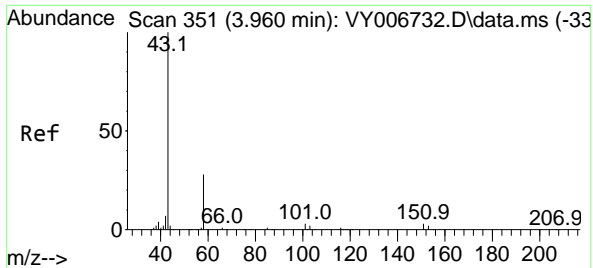
Tgt Ion:168 Resp: 87054  
 Ion Ratio Lower Upper  
 168 100  
 99 57.3 44.8 67.2



#11  
 Tert butyl alcohol  
 Concen: 8.579 ug/l  
 RT: 4.930 min Scan# 510  
 Delta R.T. -0.042 min  
 Lab File: VY006773.D  
 Acq: 16 Nov 2021 19:46

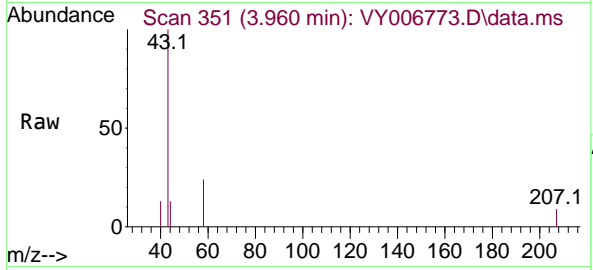
Tgt Ion: 59 Resp: 1472  
 Ion Ratio Lower Upper  
 59 100  
 57 0.0 8.2 12.4#



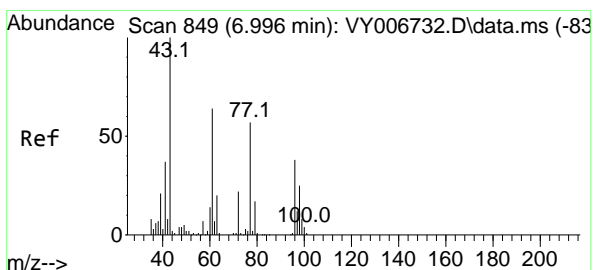
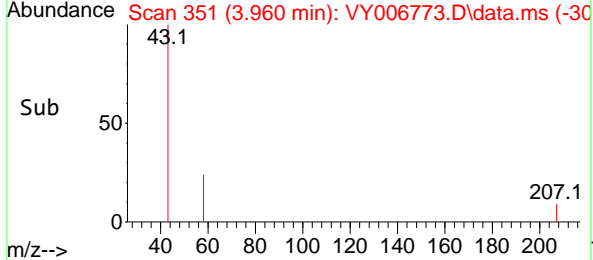
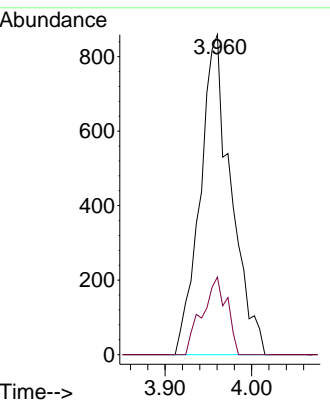


#16  
 Acetone  
 Concen: 6.150 ug/l  
 RT: 3.960 min Scan# 31  
 Delta R.T. -0.000 min  
 Lab File: VY006773.D  
 Acq: 16 Nov 2021 19:46

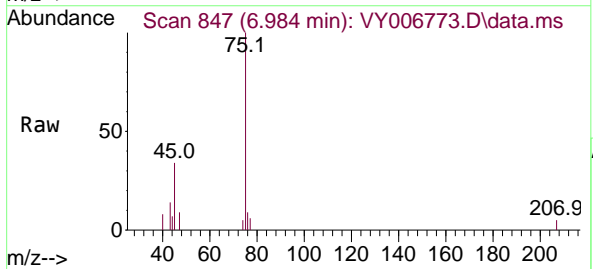
Instrument : MSVOA\_Y  
 ClientSampleId : VY006773.D  
 COMP-2



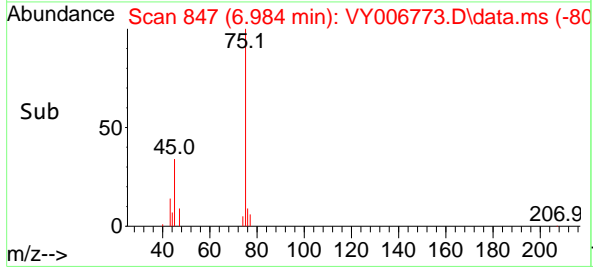
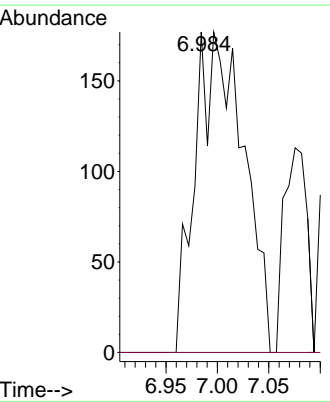
Tgt Ion: 43 Resp: 2132  
 Ion Ratio Lower Upper  
 43 100  
 58 24.2 22.9 34.3

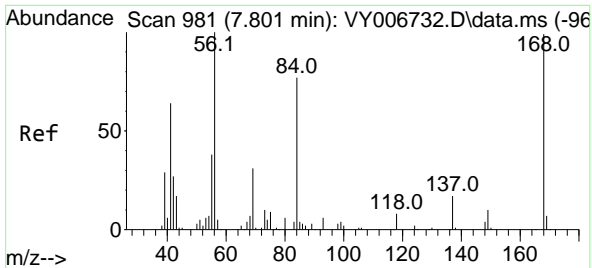


#25  
 2-Butanone  
 Concen: 12.598 ug/l  
 RT: 6.984 min Scan# 847  
 Delta R.T. -0.012 min  
 Lab File: VY006773.D  
 Acq: 16 Nov 2021 19:46



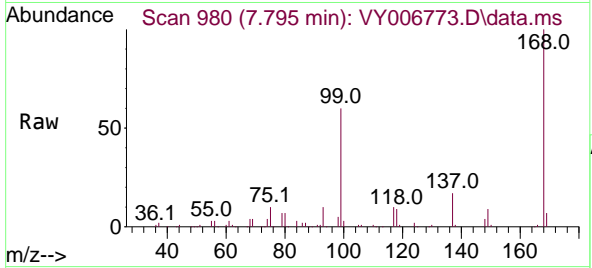
Tgt Ion: 43 Resp: 580  
 Ion Ratio Lower Upper  
 43 100  
 72 0.0 18.9 28.3#





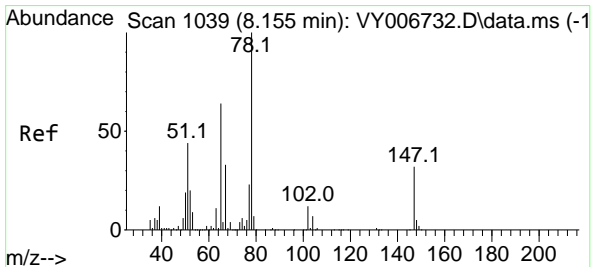
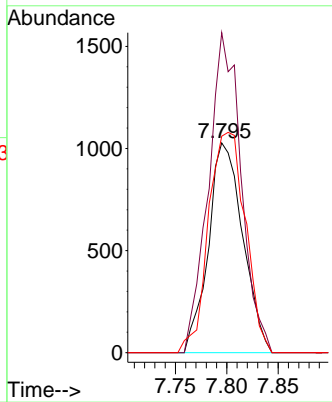
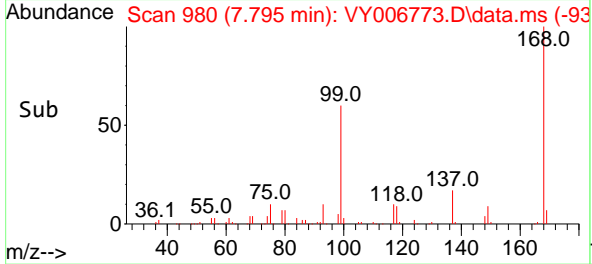
#31  
 Cyclohexane  
 Concen: 1.192 ug/l  
 RT: 7.795 min Scan# 91  
 Delta R.T. -0.006 min  
 Lab File: VY006773.D  
 Acq: 16 Nov 2021 19:46

Instrument :  
 MSVOA\_Y  
 ClientSampleId :  
 COMP-2

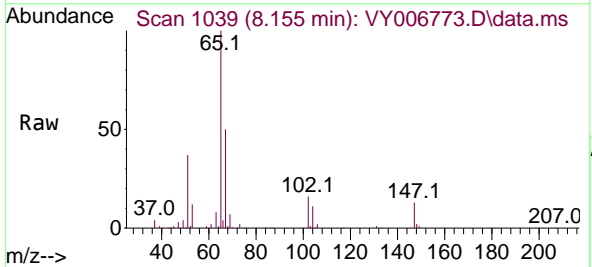


Tgt Ion: 56 Resp: 2391

Ion	Ratio	Lower	Upper
56	100		
69	152.6	26.6	40.0#
84	103.2	65.0	97.4#

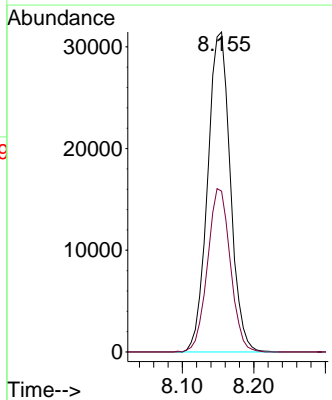
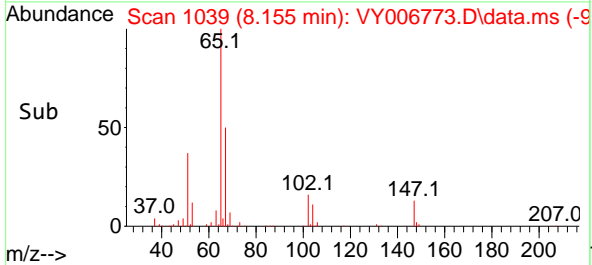


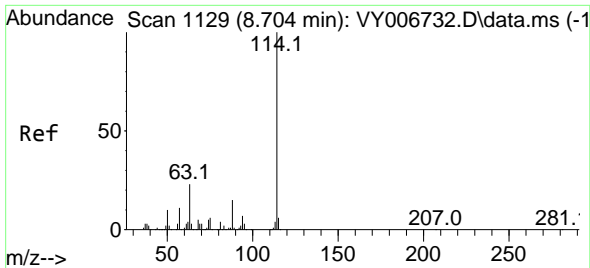
#33  
 1,2-Dichloroethane-d4  
 Concen: 60.666 ug/l  
 RT: 8.155 min Scan# 1039  
 Delta R.T. -0.000 min  
 Lab File: VY006773.D  
 Acq: 16 Nov 2021 19:46



Tgt Ion: 65 Resp: 69217

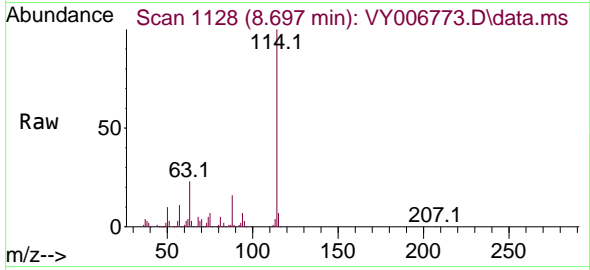
Ion	Ratio	Lower	Upper
65	100		
67	51.4	0.0	98.2





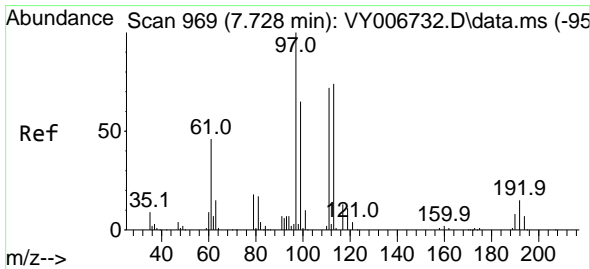
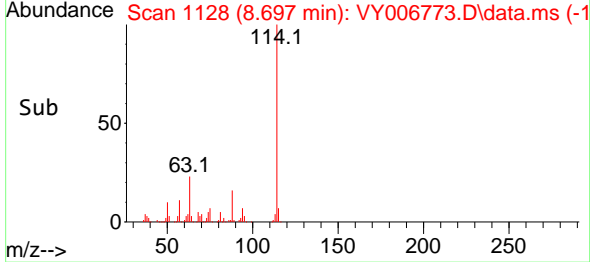
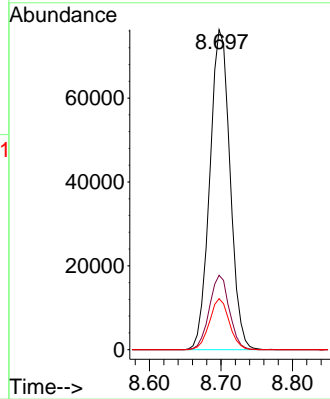
#34  
 1,4-Difluorobenzene  
 Concen: 50.000 ug/l  
 RT: 8.697 min Scan# 1128  
 Delta R.T. -0.006 min  
 Lab File: VY006773.D  
 Acq: 16 Nov 2021 19:46

Instrument : MSVOA\_Y  
 ClientSampleId : VY006773.D  
 COMP-2



Tgt Ion:114 Resp: 150060

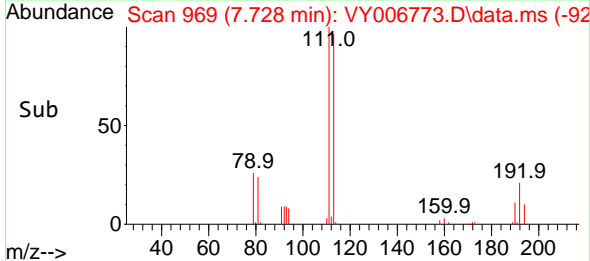
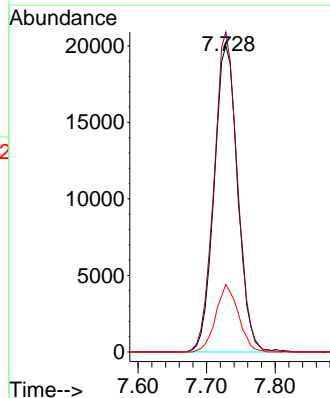
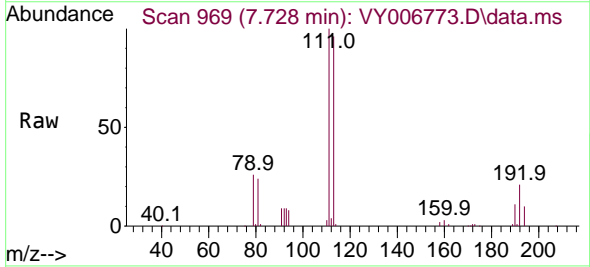
Ion	Ratio	Lower	Upper
114	100		
63	23.2	0.0	45.0
88	16.0	0.0	30.6

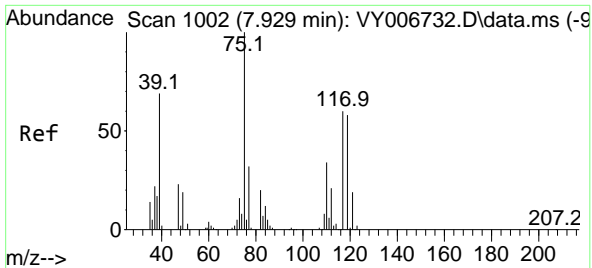


#35  
 Dibromofluoromethane  
 Concen: 51.704 ug/l  
 RT: 7.728 min Scan# 969  
 Delta R.T. -0.000 min  
 Lab File: VY006773.D  
 Acq: 16 Nov 2021 19:46

Tgt Ion:113 Resp: 47657

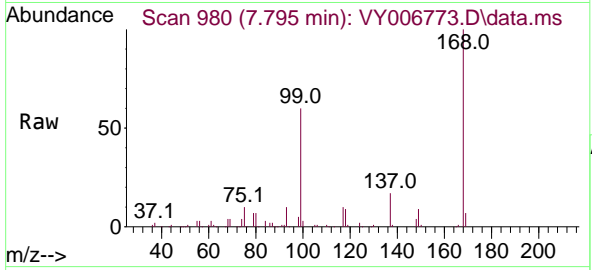
Ion	Ratio	Lower	Upper
113	100		
111	103.6	82.3	123.5
192	21.2	17.4	26.2



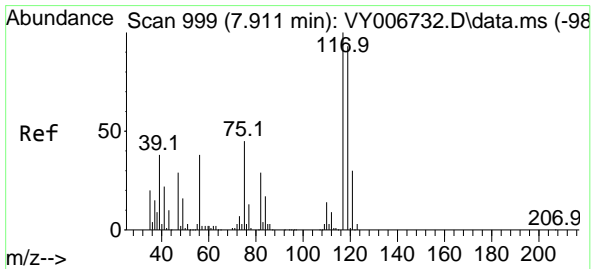
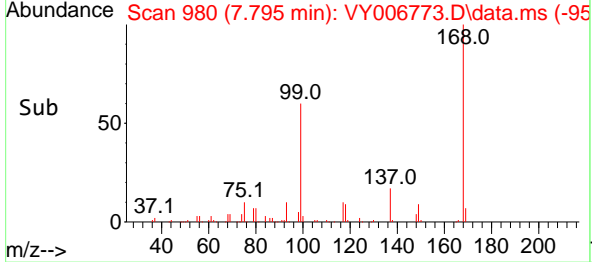
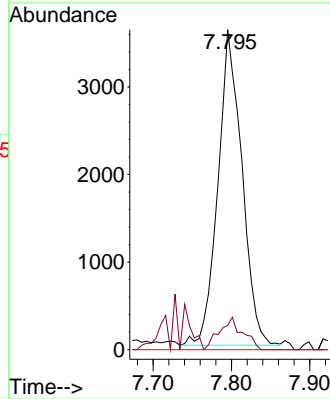


#36  
 1,1-Dichloropropene  
 Concen: 4.692 ug/l  
 RT: 7.795 min Scan# 910  
 Delta R.T. -0.134 min  
 Lab File: VY006773.D  
 Acq: 16 Nov 2021 19:46

Instrument : MSVOA\_Y  
 ClientSampleId : COMP-2

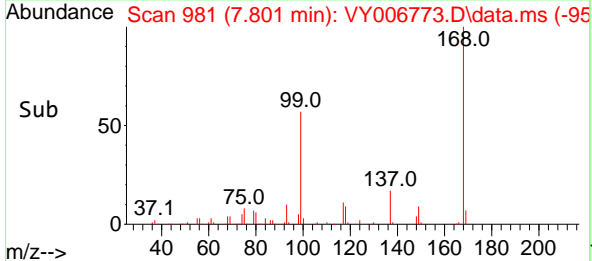
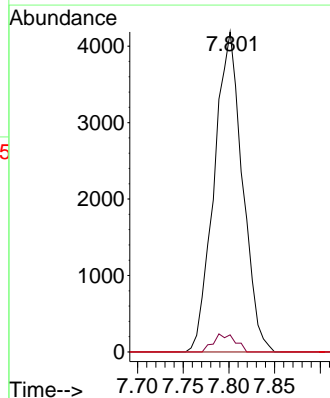
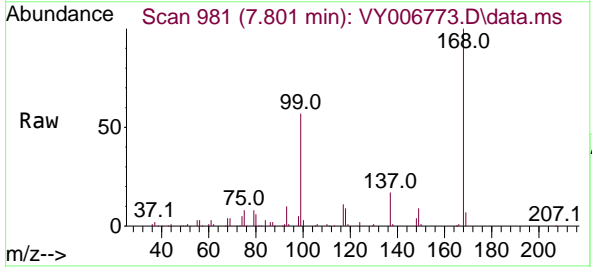


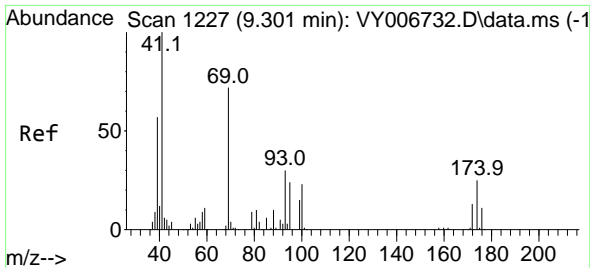
Tgt Ion: 75 Resp: 7653  
 Ion Ratio Lower Upper  
 75 100  
 110 9.9 17.1 51.3#  
 77 0.0 24.9 37.3#



#38  
 Carbon Tetrachloride  
 Concen: 5.414 ug/l  
 RT: 7.801 min Scan# 981  
 Delta R.T. -0.110 min  
 Lab File: VY006773.D  
 Acq: 16 Nov 2021 19:46

Tgt Ion: 117 Resp: 9033  
 Ion Ratio Lower Upper  
 117 100  
 119 5.4 76.6 115.0#  
 121 0.0 24.7 37.1#



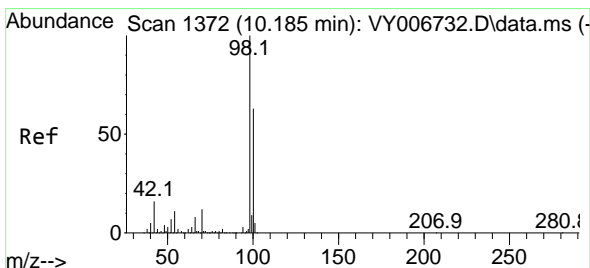
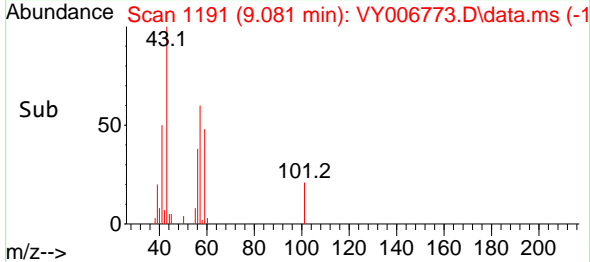
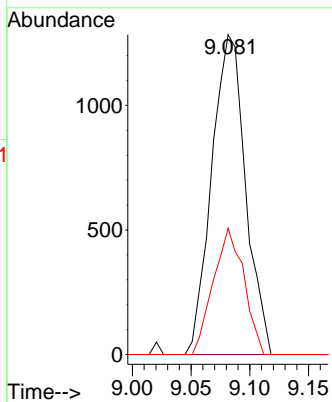
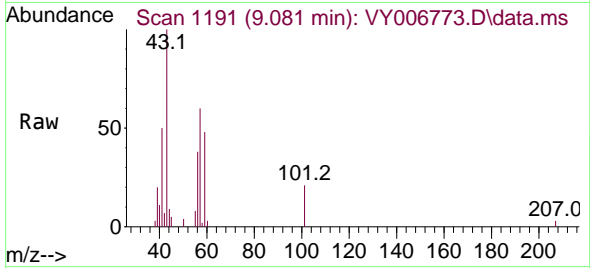


#48  
 Methyl methacrylate  
 Concen: 2.657 ug/l  
 RT: 9.081 min Scan# 1191  
 Delta R.T. -0.220 min  
 Lab File: VY006773.D  
 Acq: 16 Nov 2021 19:46

Instrument : MSVOA\_Y  
 ClientSampleId : VY006773.D  
 COMP-2

Tgt Ion: 41 Resp: 2575

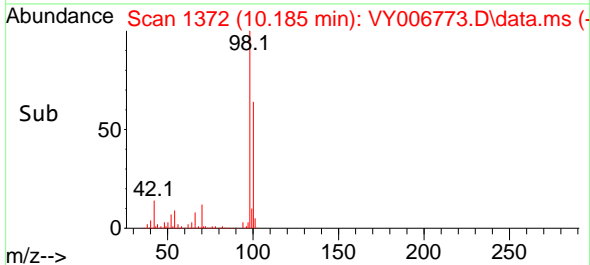
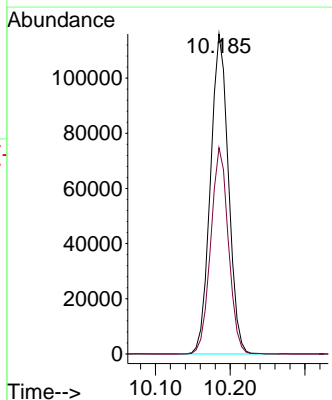
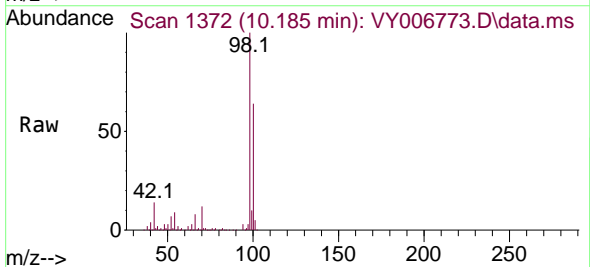
Ion	Ratio	Lower	Upper
41	100		
69	0.0	60.4	90.6#
39	35.7	48.2	72.2#



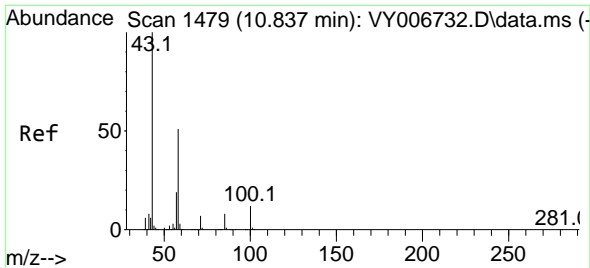
#50  
 Toluene-d8  
 Concen: 50.746 ug/l  
 RT: 10.185 min Scan# 1372  
 Delta R.T. -0.000 min  
 Lab File: VY006773.D  
 Acq: 16 Nov 2021 19:46

Tgt Ion: 98 Resp: 193556

Ion	Ratio	Lower	Upper
98	100		
100	63.4	50.9	76.3



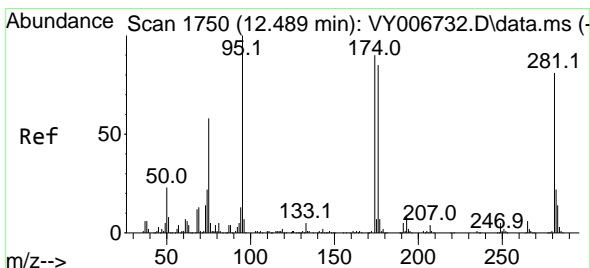
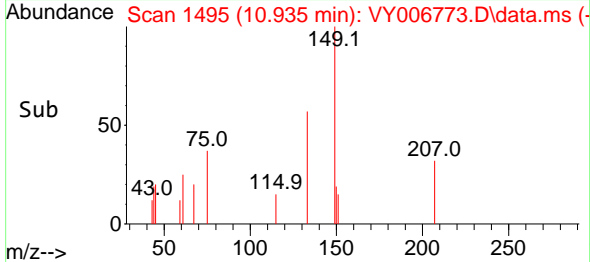
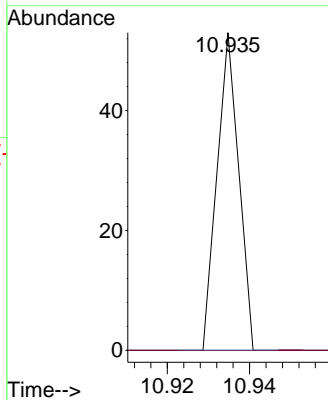
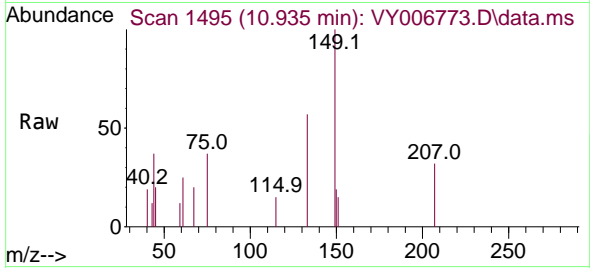




#59  
 2-Hexanone  
 Concen: 23.838 ug/l  
 RT: 10.935 min Scan# 1479  
 Delta R.T. 0.098 min  
 Lab File: VY006773.D  
 Acq: 16 Nov 2021 19:46

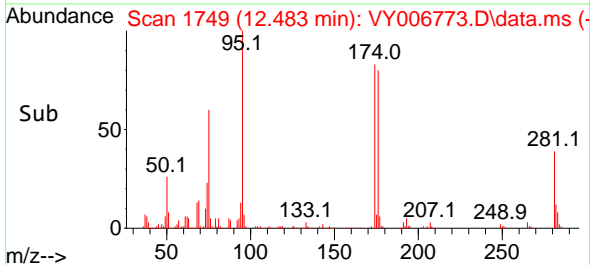
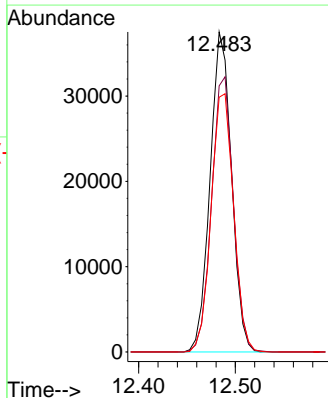
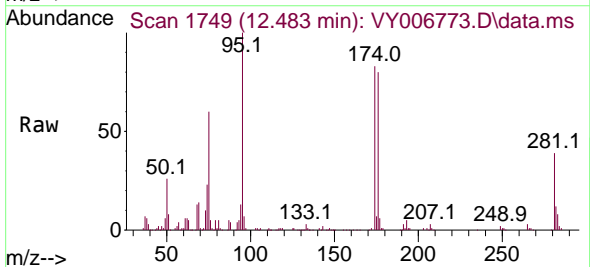
Instrument :  
 MSVOA\_Y  
 ClientSampleId :  
 COMP-2

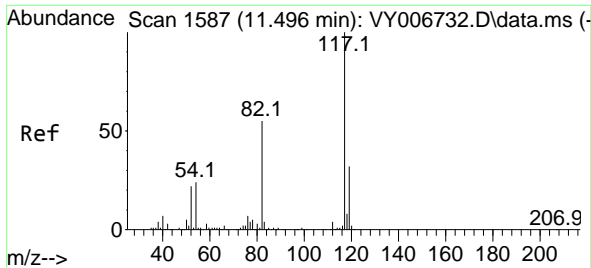
Tgt Ion: 43 Resp: 19  
 Ion Ratio Lower Upper  
 43 100  
 58 0.0 24.6 73.6#



#62  
 4-Bromofluorobenzene  
 Concen: 44.919 ug/l  
 RT: 12.483 min Scan# 1749  
 Delta R.T. -0.006 min  
 Lab File: VY006773.D  
 Acq: 16 Nov 2021 19:46

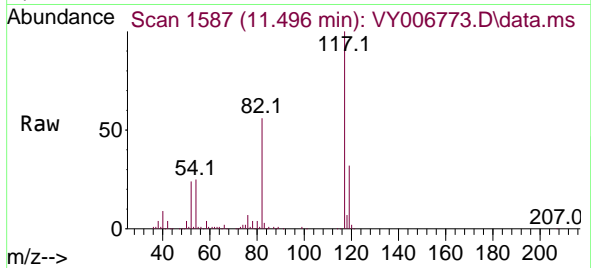
Tgt Ion: 95 Resp: 57760  
 Ion Ratio Lower Upper  
 95 100  
 174 87.0 0.0 177.0  
 176 84.5 0.0 169.4



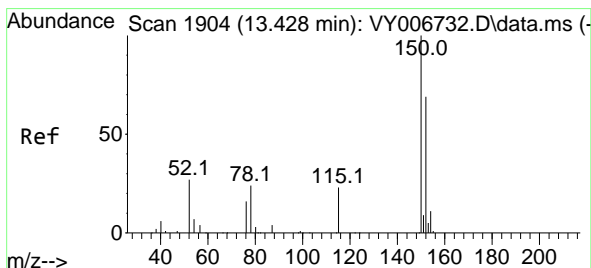
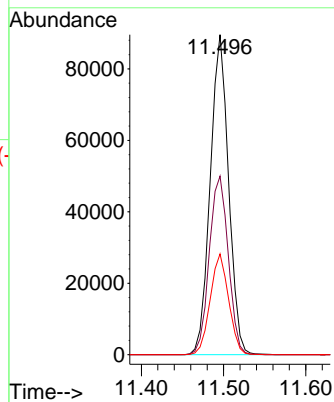
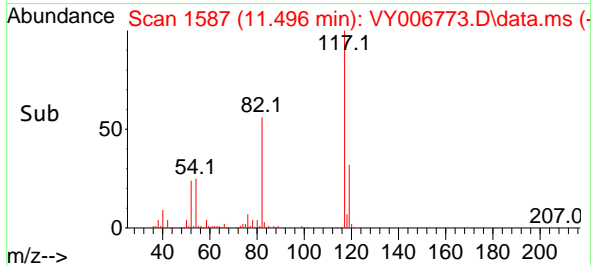


#63  
 Chlorobenzene-d5  
 Concen: 50.000 ug/l  
 RT: 11.496 min Scan# 11  
 Delta R.T. -0.000 min  
 Lab File: VY006773.D  
 Acq: 16 Nov 2021 19:46

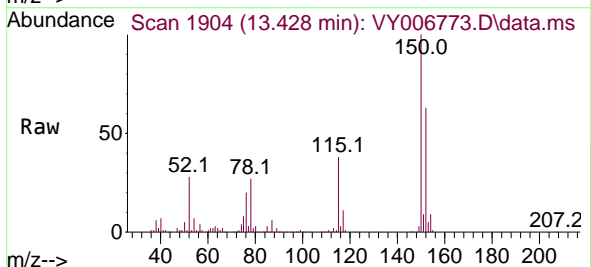
Instrument : MSVOA\_Y  
 ClientSampleId : COMP-2



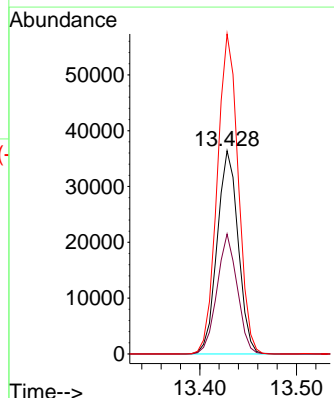
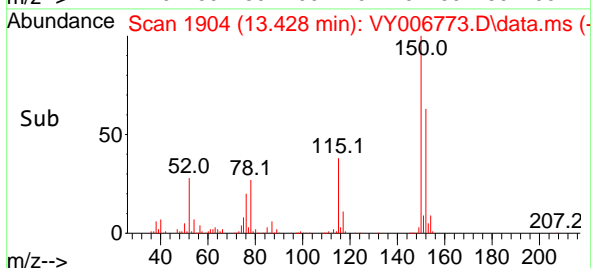
Tgt Ion:117 Resp: 138699  
 Ion Ratio Lower Upper  
 117 100  
 82 55.8 45.7 68.5  
 119 31.5 25.5 38.3

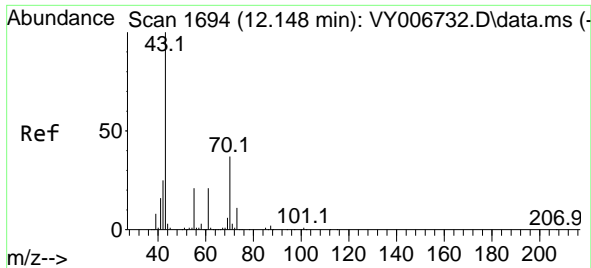


#72  
 1,4-Dichlorobenzene-d4  
 Concen: 50.000 ug/l  
 RT: 13.428 min Scan# 1904  
 Delta R.T. 0.000 min  
 Lab File: VY006773.D  
 Acq: 16 Nov 2021 19:46



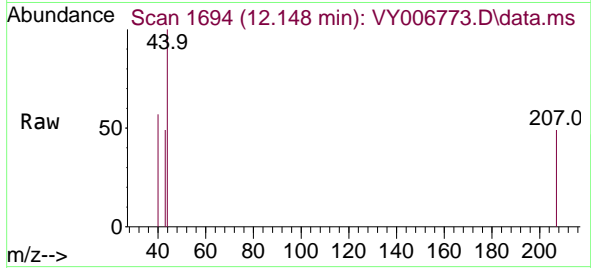
Tgt Ion:152 Resp: 54749  
 Ion Ratio Lower Upper  
 152 100  
 115 57.0 28.5 85.5  
 150 157.4 0.0 348.2



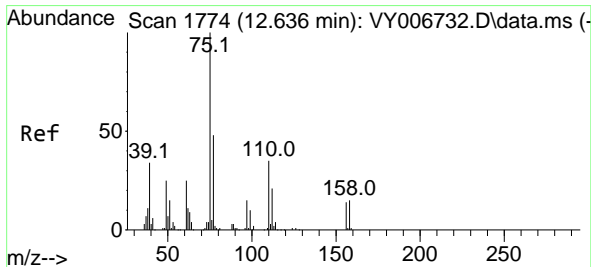
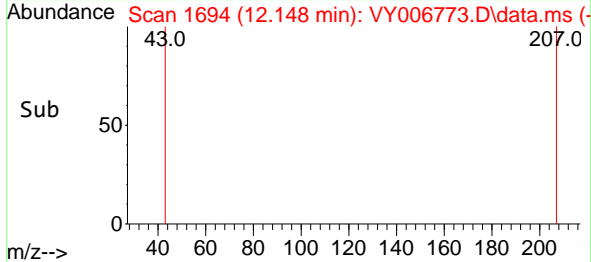
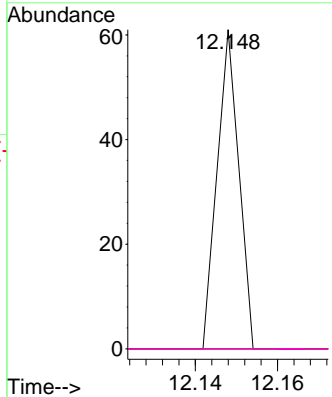


#74  
 N-amy1 acetate  
 Concen: 3.169 ug/l  
 RT: 12.148 min Scan# 1694  
 Delta R.T. -0.000 min  
 Lab File: VY006773.D  
 Acq: 16 Nov 2021 19:46

Instrument : MSVOA\_Y  
 ClientSampleId : VY006773.D  
 COMP-2

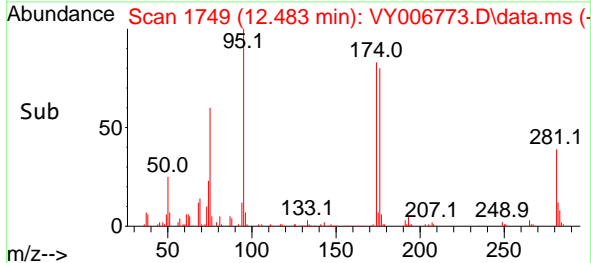
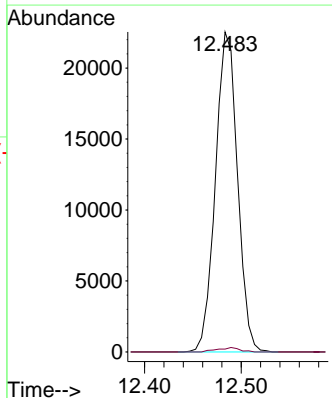
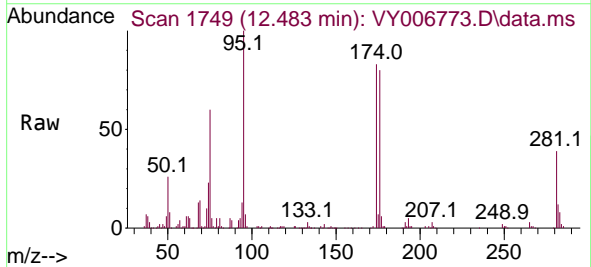


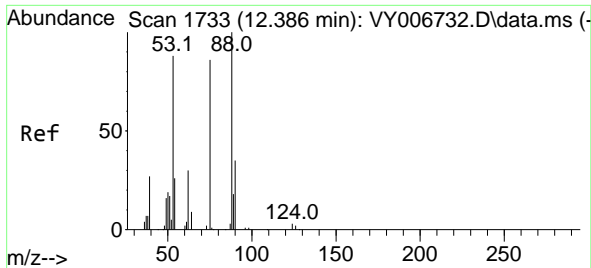
Tgt Ion	Resp	Lower	Upper
43	100		
70	0.0	29.4	44.0#
55	0.0	18.1	27.1#
61	0.0	17.6	26.4#



#76  
 1,2,3-Trichloropropane  
 Concen: 59.866 ug/l  
 RT: 12.483 min Scan# 1749  
 Delta R.T. -0.153 min  
 Lab File: VY006773.D  
 Acq: 16 Nov 2021 19:46

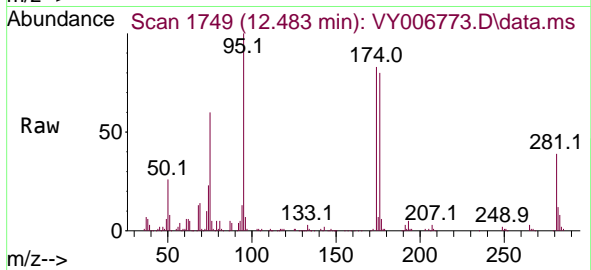
Tgt Ion	Resp	Lower	Upper
75	100		
77	1.4	0.0	0.0#





#81  
 trans-1,4-Dichloro-2-butene  
 Concen: 118.623 ug/l  
 RT: 12.483 min Scan# 11  
 Delta R.T. 0.097 min  
 Lab File: VY006773.D  
 Acq: 16 Nov 2021 19:46

Instrument :  
 MSVOA\_Y  
 ClientSampleId :  
 COMP-2



Tgt Ion: 75 Resp: 35635

Ion	Ratio	Lower	Upper
75	100		
53	0.1	85.8	128.6#
89	0.5	39.3	58.9#

