

Data Path : Z:\voasrv\HPCHEM1\MSVOA_Y\Data\VY111721\
 Data File : VY006786.D
 Acq On : 17 Nov 2021 14:20
 Operator : SY/MD
 Sample : M4673-01
 Misc : 4.99G/5ML/MSVOA_Y/SOIL
 ALS Vial : 10 Sample Multiplier: 1

Instrument :
 MSVOA_Y
 ClientSampleId :
 RO-72-11933

Integration Parameters: RTEINT.P

Integrator: RTE
 Smoothing : ON
 Sampling : 1
 Start Thrs : 0.2
 Stop Thrs : 0

Filtering: 5
 Min Area: 3 % of largest Peak
 Max Peaks: 100
 Peak Location: TOP

If leading or trailing edge < 100 prefer < Baseline drop else tangent >
 Peak separation: 5

Method : Z:\voasrv\HPCHEM1\MSVOA_Y\methods\82Y111521S.M
 Title : SW846 8260

Signal : TIC: VY006786.D\data.ms

peak #	R.T. min	first scan	max scan	last scan	PK TY	peak height	corr. area	corr. % max.	% of total
1	2.528	109	116	120	rBV5	3199	7869	1.36%	0.208%
2	4.210	380	392	399	rBV2	2582	8067	1.39%	0.213%
3	4.729	466	477	490	rBV2	9348	30702	5.29%	0.812%
4	5.765	636	647	656	rVB5	3443	10363	1.79%	0.274%
5	7.003	840	850	864	rBV	7039	30636	5.28%	0.811%
6	7.728	959	969	974	rBV	77349	183038	31.53%	4.843%
7	7.801	974	981	994	rVB	128361	294362	50.71%	7.788%
8	8.149	1022	1038	1048	rBV2	108961	322115	55.49%	8.522%
9	8.697	1120	1128	1140	rVB	207375	407348	70.18%	10.777%
10	10.185	1365	1372	1381	rBV	344001	580461	100.00%	15.357%
11	10.587	1430	1438	1447	rBV	18755	34290	5.91%	0.907%
12	10.953	1492	1498	1508	rBV3	9828	22211	3.83%	0.588%
13	11.319	1552	1558	1564	rVB	16417	27602	4.76%	0.730%
14	11.496	1579	1587	1597	rBV	308324	496669	85.56%	13.140%
15	12.337	1720	1725	1731	rBV	19292	29414	5.07%	0.778%
16	12.489	1741	1750	1757	rBV2	308999	535988	92.34%	14.181%
17	12.819	1798	1804	1809	rVV8	3055	6269	1.08%	0.166%
18	12.892	1809	1816	1822	rVB	8165	14020	2.42%	0.371%
19	13.142	1852	1857	1861	rBV3	8309	13629	2.35%	0.361%
20	13.184	1861	1864	1870	rVB2	10211	14788	2.55%	0.391%
21	13.428	1897	1904	1912	rBV	237460	363181	62.57%	9.609%
22	13.751	1951	1957	1962	rBV7	5805	11098	1.91%	0.294%
23	13.965	1987	1992	1998	rVB2	25794	41707	7.19%	1.103%
24	14.081	2006	2011	2016	rBV	12191	20071	3.46%	0.531%
25	14.263	2035	2041	2051	rBV	5561	12037	2.07%	0.318%
26	14.422	2064	2067	2071	rVB4	5089	7180	1.24%	0.190%
27	14.617	2095	2099	2104	rBV6	7273	13667	2.35%	0.362%
28	14.672	2104	2108	2114	rBV6	7561	19040	3.28%	0.504%
29	14.733	2114	2118	2119	rBV2	8940	9613	1.66%	0.254%
30	14.946	2150	2153	2156	rVB3	6873	8838	1.52%	0.234%
31	15.044	2165	2169	2176	rBV9	6129	16155	2.78%	0.427%
32	15.129	2179	2183	2190	rVB6	11146	22925	3.95%	0.607%
33	15.215	2192	2197	2203	rBV6	11151	24929	4.29%	0.660%
34	15.294	2207	2210	2213	rBV4	5959	8948	1.54%	0.237%
35	15.385	2221	2225	2230	rVB5	15665	30207	5.20%	0.799%
36	15.446	2230	2235	2236	rBV4	9156	14067	2.42%	0.372%

Data Path : Z:\voasrv\HPCHEM1\MSVOA_Y\Data\VY111721\
Data File : VY006786.D
Acq On : 17 Nov 2021 14:20
Operator : SY/MD
Sample : M4673-01
Misc : 4.99G/5ML/MSVOA_Y/SOIL
ALS Vial : 10 Sample Multiplier: 1

Instrument :
MSVOA_Y
ClientSampleId :
RO-72-11933

Integration Parameters: RTEINT.P
Integrator: RTE
Smoothing : ON Filtering: 5
Sampling : 1 Min Area: 3 % of largest Peak
Start Thrs: 0.2 Max Peaks: 100
Stop Thrs : 0 Peak Location: TOP

If leading or trailing edge < 100 prefer < Baseline drop else tangent >
Peak separation: 5

Method : Z:\voasrv\HPCHEM1\MSVOA_Y\methods\82Y111521S.M
Title : SW846 8260

37	15.605	2256	2261	2266	rVB8	14571	26088	4.49%	0.690%
38	16.233	2359	2364	2368	rBV3	12753	25709	4.43%	0.680%
39	16.476	2400	2404	2413	rBV3	16390	34432	5.93%	0.911%

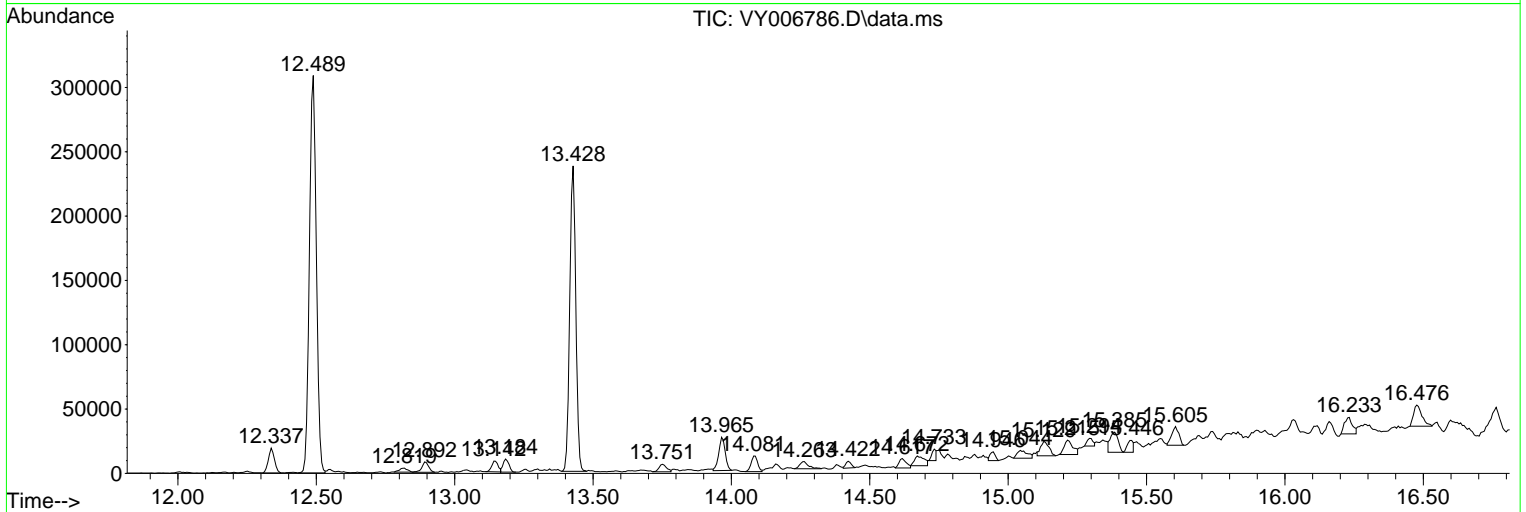
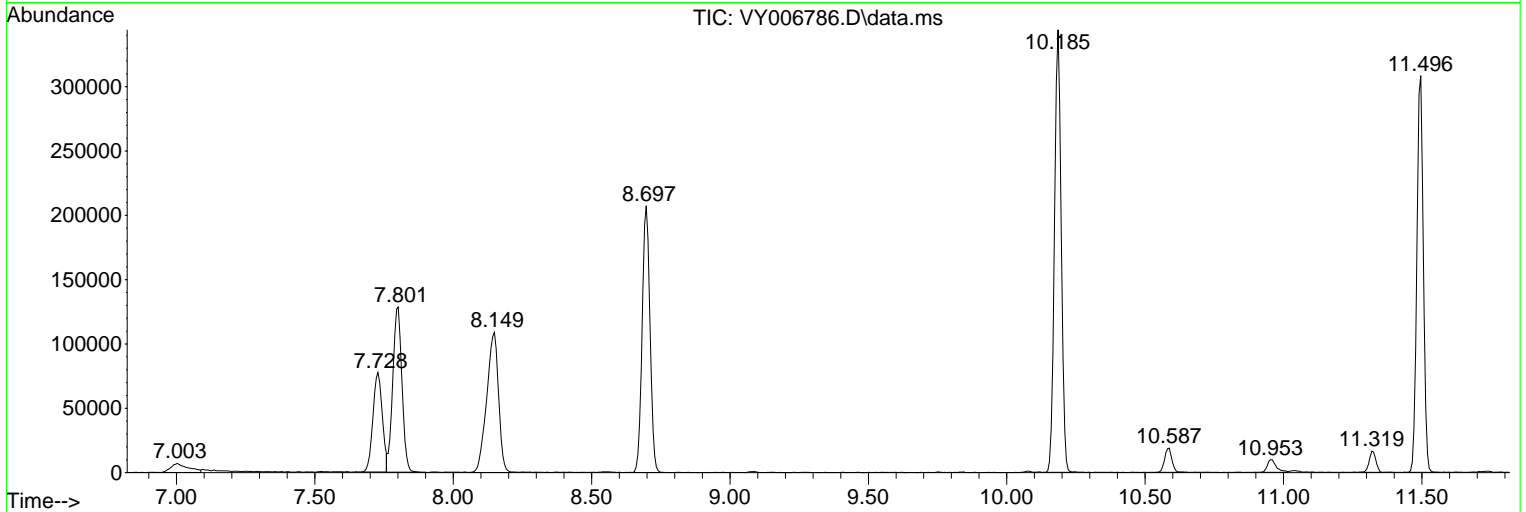
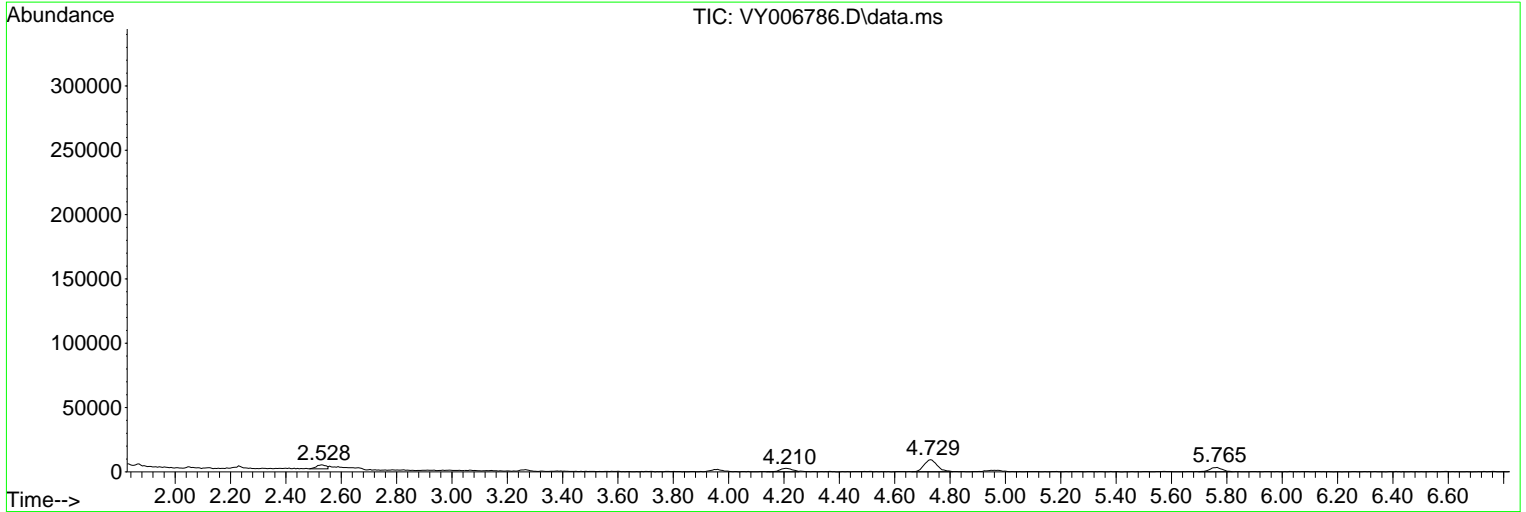
Sum of corrected areas: 3779733

Data Path : Z:\voasrv\HPCHEM1\MSVOA_Y\Data\VY111721\
 Data File : VY006786.D
 Acq On : 17 Nov 2021 14:20
 Operator : SY/MD
 Sample : M4673-01
 Misc : 4.99G/5ML/MSVOA_Y/SOIL
 ALS Vial : 10 Sample Multiplier: 1

Instrument :
 MSVOA_Y
 ClientSampleId :
 RO-72-11933

Quant Method : Z:\voasrv\HPCHEM1\MSVOA_Y\methods\82Y111521S.M
 Quant Title : SW846 8260

TIC Library : C:\Database\NIST20.L
 TIC Integration Parameters: LSCINT.P



Data Path : Z:\voasrv\HPCHEM1\MSVOA_Y\Data\VY111721\
 Data File : VY006786.D
 Acq On : 17 Nov 2021 14:20
 Operator : SY/MD
 Sample : M4673-01
 Misc : 4.99G/5ML/MSVOA_Y/SOIL
 ALS Vial : 10 Sample Multiplier: 1

Instrument :
 MSVOA_Y
 ClientSampleId :
 RO-72-11933

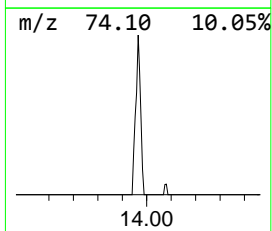
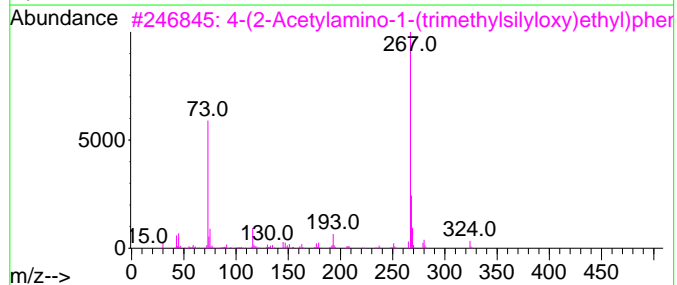
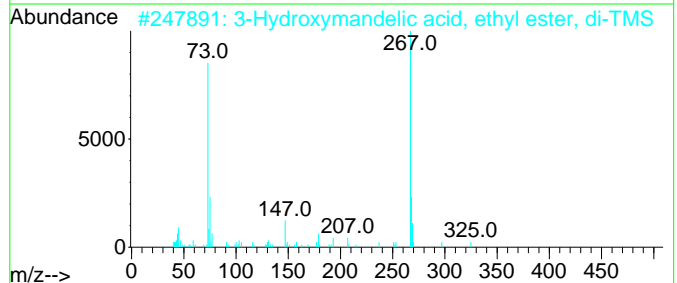
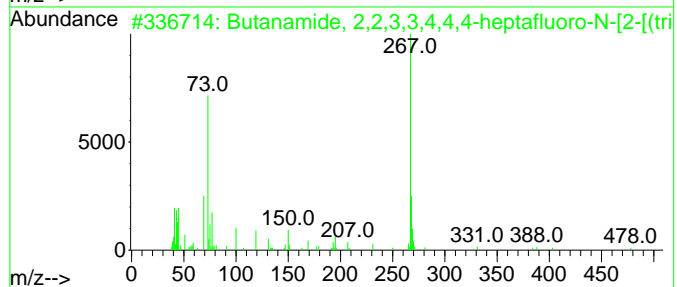
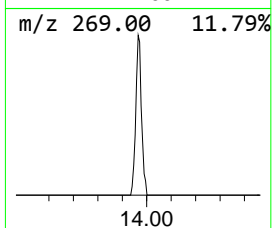
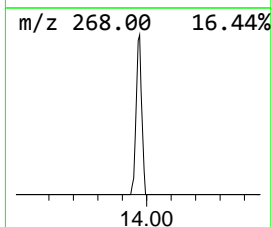
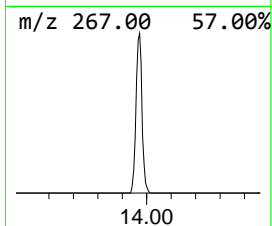
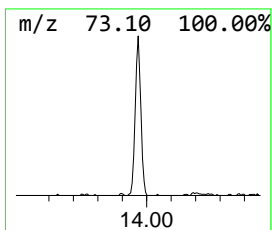
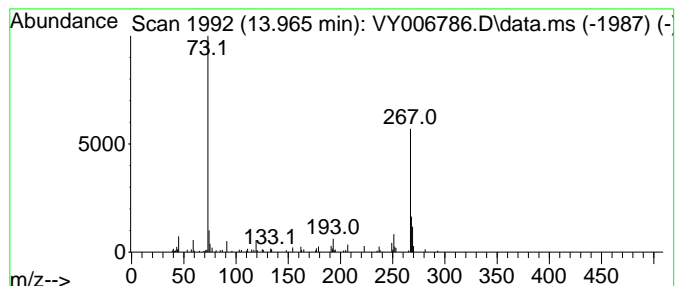
Quant Method : Z:\voasrv\HPCHEM1\MSVOA_Y\methods\82Y111521S.M
 Quant Title : SW846 8260

TIC Library : C:\Database\NIST20.L
 TIC Integration Parameters: LSCINT.P

 Peak Number 3 Butanamide, 2,2,3,3,4,4,4-h... Concentration Rank 1

R.T.	EstConc	Area	Relative to ISTD	R.T.
13.965	5.74 ug/l	41707	1,4-Dichlorobenzene-d4	13.428

Hit#	of	5	Tentative ID	MW	MolForm	CAS#	Qual
1			Butanamide, 2,2,3,3,4,4,4-heptaf...	493	C18H26F7N03Si2	055471-01-7	72
2			3-Hydroxymandelic acid, ethyl es...	340	C16H28O4Si2	1000071-88-9	72
3			4-(2-Acetylamino-1-(trimethylsil...	339	C16H29N03Si2	1000373-43-5	50
4			Bamethan, 2TMS derivative	353	C18H35N02Si2	040629-66-1	50
5			4-(4-Fluorophenyl)-2,3-dihydro-1...	267	C12H14FNOSSi	1010501-61-0	50



Data Path : Z:\voasrv\HPCHEM1\MSVOA_Y\Data\VY111721\
Data File : VY006786.D
Acq On : 17 Nov 2021 14:20
Operator : SY/MD
Sample : M4673-01
Misc : 4.99G/5ML/MSVOA_Y/SOIL
ALS Vial : 10 Sample Multiplier: 1

Instrument :
MSVOA_Y
ClientSampleId :
RO-72-11933

Quant Method : Z:\voasrv\HPCHEM1\MSVOA_Y\methods\82Y111521S.M
Quant Title : SW846 8260

TIC Library : C:\Database\NIST20.L
TIC Integration Parameters: LSCINT.P

TIC Top Hit name	RT	EstConc	Units	Response	--Internal Standard--			
					#	RT	Resp	Conc
Butanamide, 2,2...	13.965	5.7	ug/l	41707	4	13.428	363181	50.0