

Data Path : Z:\voasrv\HPCHEM1\MSVOA_Y\Data\VY112023\
 Data File : VY016428.D
 Acq On : 20 Nov 2023 16:59
 Operator : SY/MD
 Sample : 05464-01RE
 Misc : 5.06g/5.0mL/MSVOA_Y/SOIL
 ALS Vial : 19 Sample Multiplier: 1

Instrument :
 MSVOA_Y
 ClientSampleId :

Quant Time: Nov 21 05:15:58 2023
 Quant Method : Z:\voasrv\HPCHEM1\MSVOA_Y\methods\82Y110823S.M
 Quant Title : SW846 8260
 QLast Update : Thu Nov 09 00:45:52 2023
 Response via : Initial Calibration

Compound	R.T.	QIon	Response	Conc	Units	Dev(Min)

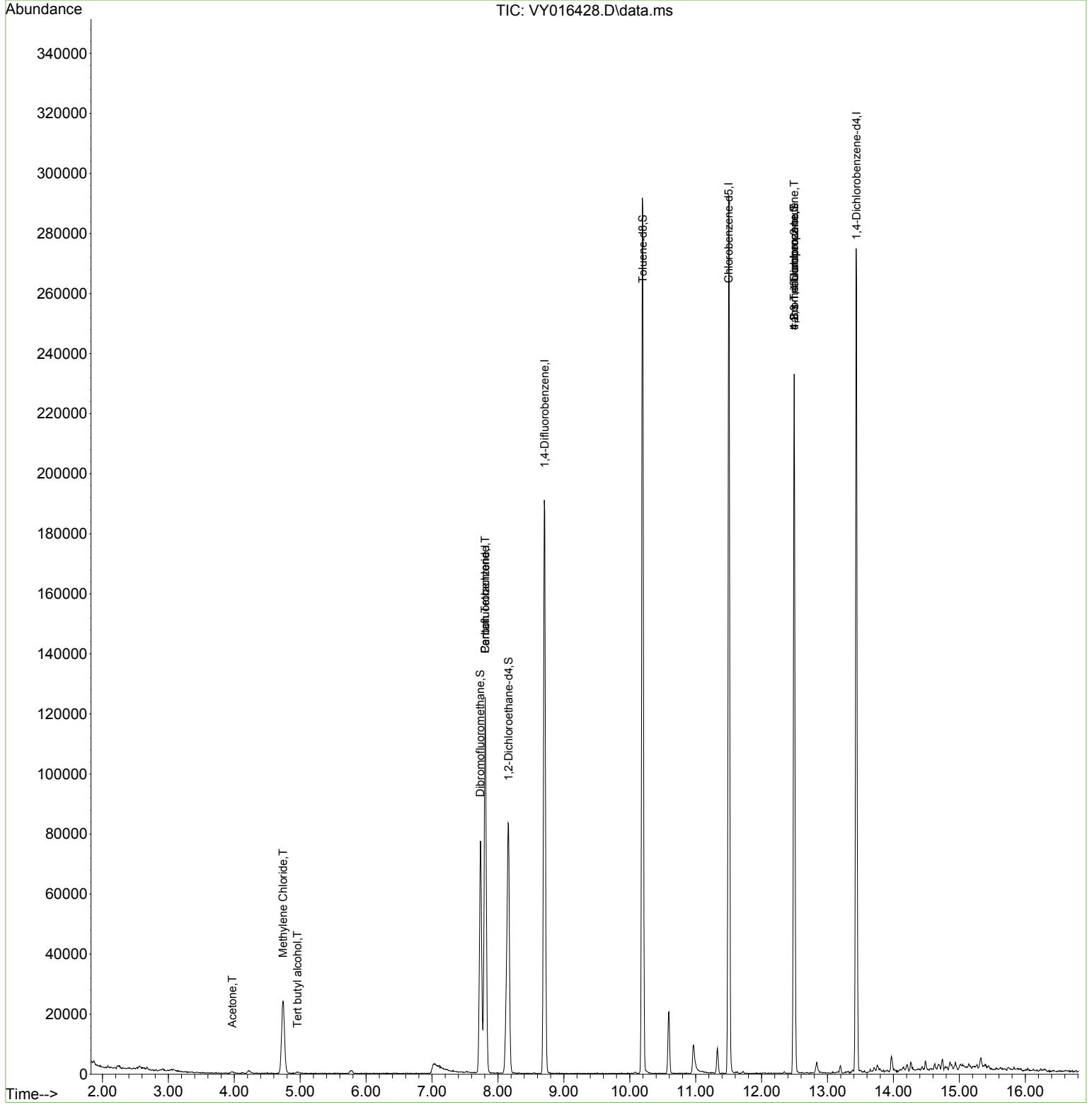
Internal Standards						
1) Pentafluorobenzene	7.807	168	97098	50.000	ug/l	0.00
34) 1,4-Difluorobenzene	8.709	114	172577	50.000	ug/l	0.00
63) Chlorobenzene-d5	11.502	117	165198	50.000	ug/l	0.00
72) 1,4-Dichlorobenzene-d4	13.440	152	73712	50.000	ug/l	0.00
System Monitoring Compounds						
33) 1,2-Dichloroethane-d4	8.161	65	58972	66.452	ug/l	0.00
Spiked Amount	50.000	Range	50 - 163	Recovery	=	132.900%
35) Dibromofluoromethane	7.734	113	55096	56.201	ug/l	0.00
Spiked Amount	50.000	Range	54 - 147	Recovery	=	112.400%
50) Toluene-d8	10.197	98	203295	51.137	ug/l	0.00
Spiked Amount	50.000	Range	58 - 134	Recovery	=	102.280%
62) 4-Bromofluorobenzene	12.495	95	68361	52.944	ug/l	0.00
Spiked Amount	50.000	Range	30 - 143	Recovery	=	105.880%
Target Compounds						
					Qvalue	
11) Tert butyl alcohol	4.960	59	941	13.541	ug/l #	89
16) Acetone	3.972	43	1116	7.603	ug/l #	83
20) Methylene Chloride	4.741	84	20193	17.188	ug/l	86
38) Carbon Tetrachloride	7.807	117	9395	5.318	ug/l #	16
76) 1,2,3-Trichloropropane	12.495	75	35293	49.912	ug/l #	100
81) trans-1,4-Dichloro-2-b...	12.495	75	35293	108.337	ug/l #	11

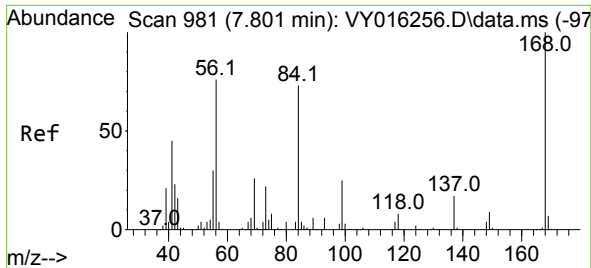
(#) = qualifier out of range (m) = manual integration (+) = signals summed

Data Path : Z:\voasrv\HPCHEM1\MSVOA_Y\Data\VY112023\
 Data File : VY016428.D
 Acq On : 20 Nov 2023 16:59
 Operator : SY/MD
 Sample : 05464-01RE
 Misc : 5.06g/5.0mL/MSVOA_Y/SOIL
 ALS Vial : 19 Sample Multiplier: 1

Instrument :
 MSVOA_Y
 ClientSampleId :

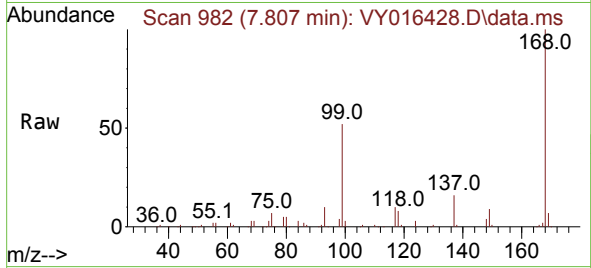
Quant Time: Nov 21 05:15:58 2023
 Quant Method : Z:\voasrv\HPCHEM1\MSVOA_Y\methods\82Y110823S.M
 Quant Title : SW846 8260
 QLast Update : Thu Nov 09 00:45:52 2023
 Response via : Initial Calibration



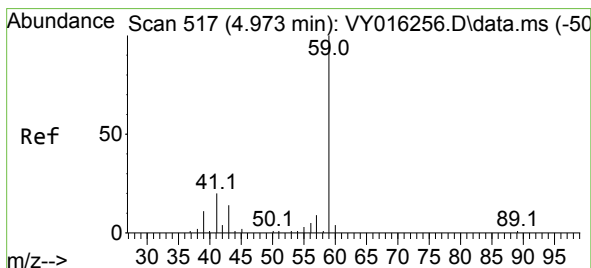
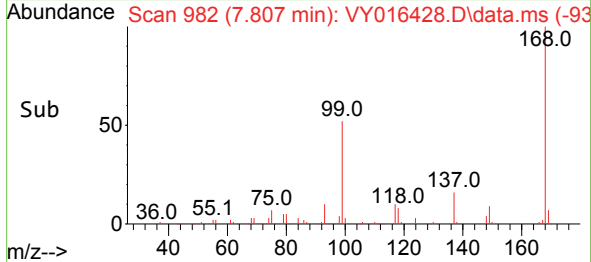
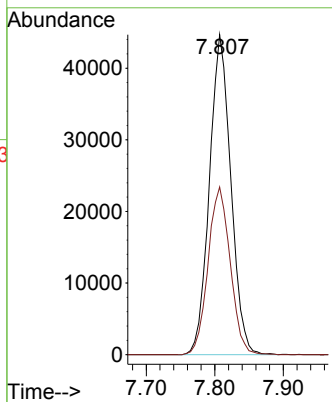


#1
 Pentafluorobenzene
 Concen: 50.000 ug/l
 RT: 7.807 min Scan# 91
 Delta R.T. 0.006 min
 Lab File: VY016428.D
 Acq: 20 Nov 2023 16:59

Instrument :
 MSVOA_Y
 ClientSampleId :

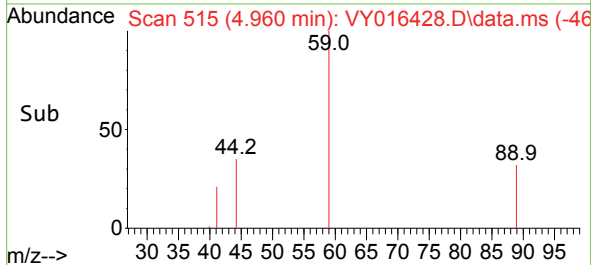
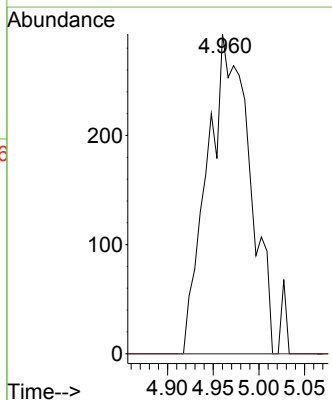
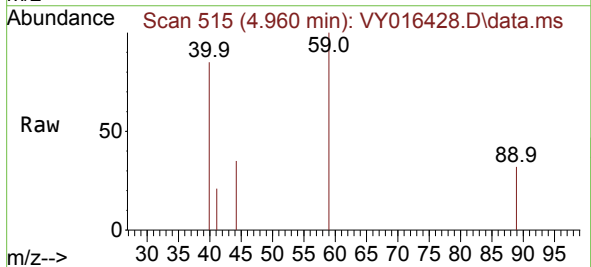


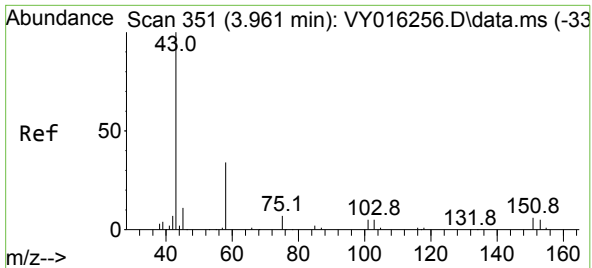
Tgt Ion:168 Resp: 97098
 Ion Ratio Lower Upper
 168 100
 99 52.4 43.4 65.0



#11
 Tert butyl alcohol
 Concen: 13.541 ug/l
 RT: 4.960 min Scan# 515
 Delta R.T. -0.012 min
 Lab File: VY016428.D
 Acq: 20 Nov 2023 16:59

Tgt Ion: 59 Resp: 941
 Ion Ratio Lower Upper
 59 100
 57 0.0 3.0 4.4#

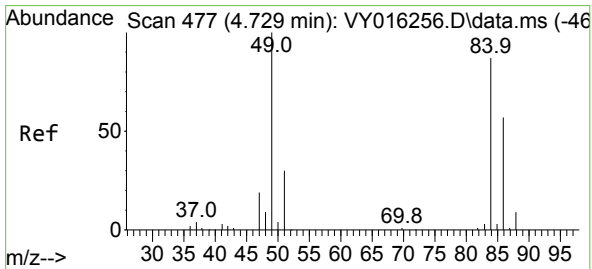
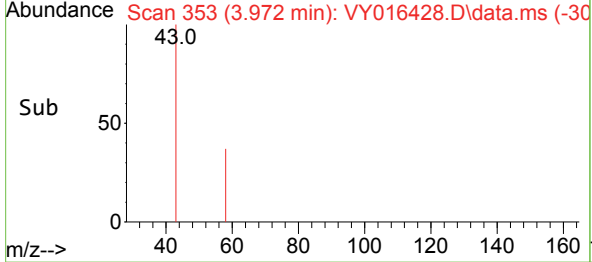
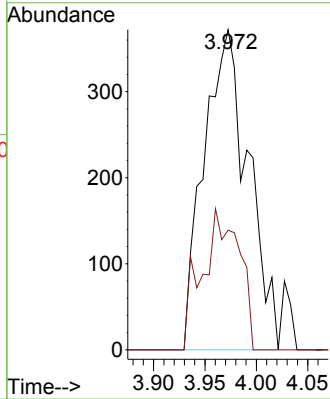
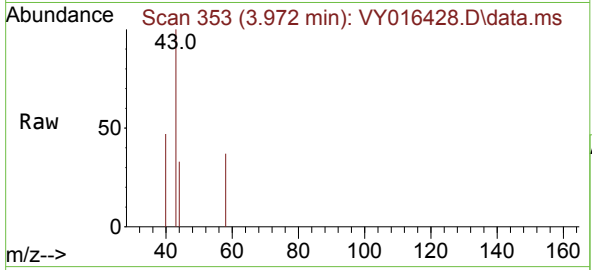




#16
 Acetone
 Concen: 7.603 ug/l
 RT: 3.972 min Scan# 311
 Delta R.T. 0.012 min
 Lab File: VY016428.D
 Acq: 20 Nov 2023 16:59

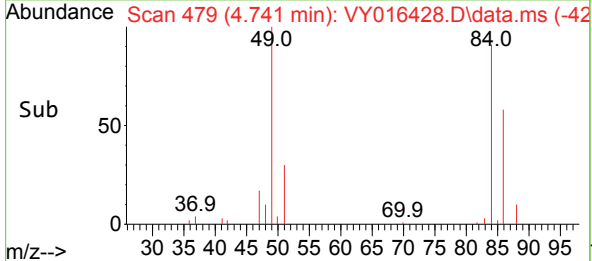
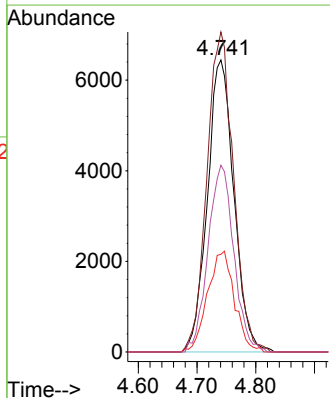
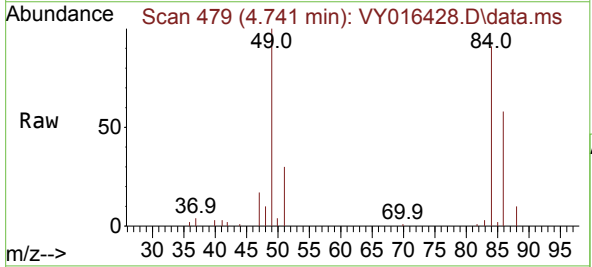
Instrument : MSVOA_Y
 ClientSampleId :

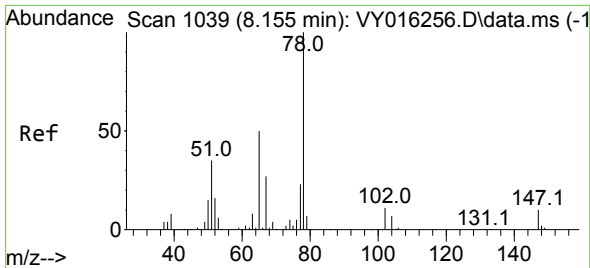
Tgt Ion: 43 Resp: 1116
 Ion Ratio Lower Upper
 43 100
 58 37.4 22.7 34.1#



#20
 Methylene Chloride
 Concen: 17.188 ug/l
 RT: 4.741 min Scan# 479
 Delta R.T. 0.012 min
 Lab File: VY016428.D
 Acq: 20 Nov 2023 16:59

Tgt Ion: 84 Resp: 20193
 Ion Ratio Lower Upper
 84 100
 49 109.6 106.9 160.3
 51 33.4 33.2 49.8
 86 63.9 51.0 76.6

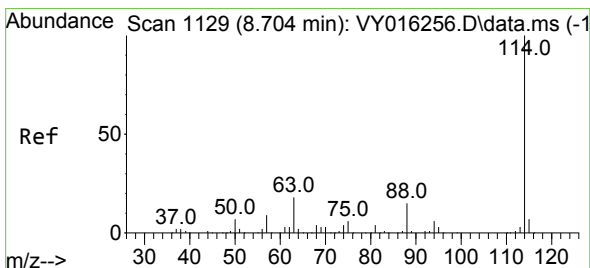
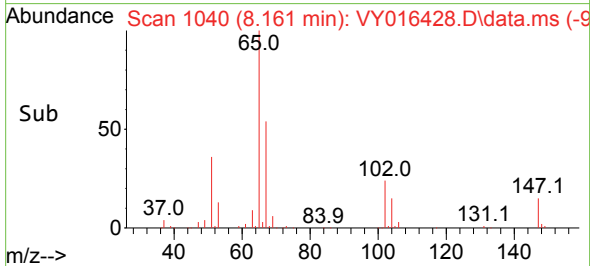
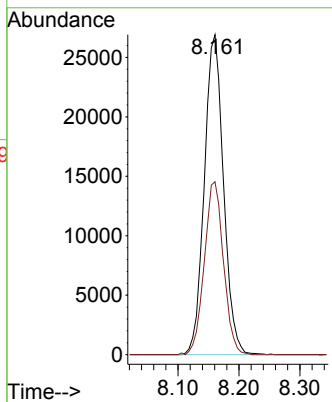
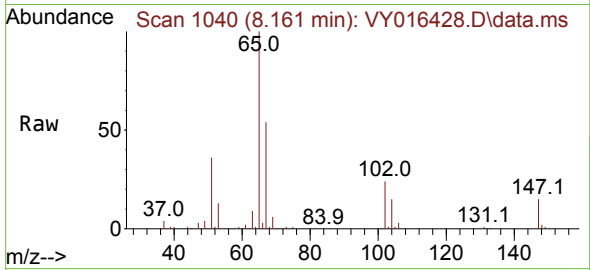




#33
 1,2-Dichloroethane-d4
 Concen: 66.452 ug/l
 RT: 8.161 min Scan# 1130
 Delta R.T. 0.006 min
 Lab File: VY016428.D
 Acq: 20 Nov 2023 16:59

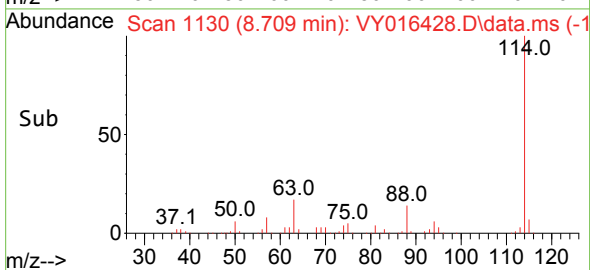
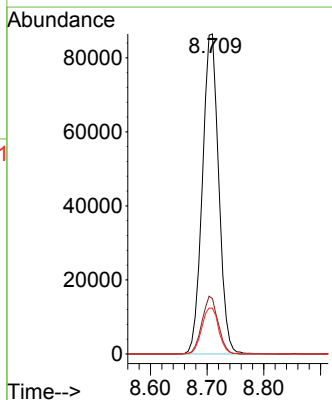
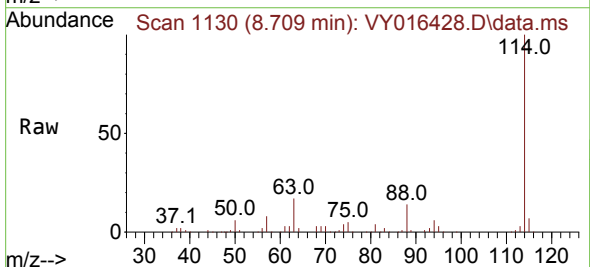
Instrument : MSVOA_Y
 ClientSampleId :

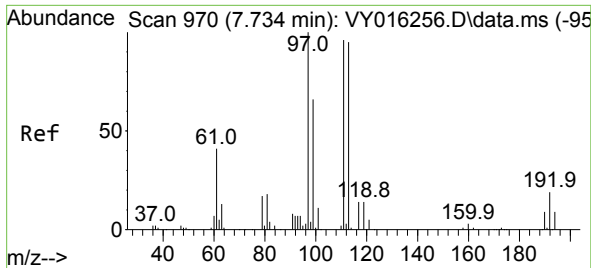
Tgt Ion: 65 Resp: 58972
 Ion Ratio Lower Upper
 65 100
 67 53.9 0.0 101.8



#34
 1,4-Difluorobenzene
 Concen: 50.000 ug/l
 RT: 8.709 min Scan# 1130
 Delta R.T. 0.006 min
 Lab File: VY016428.D
 Acq: 20 Nov 2023 16:59

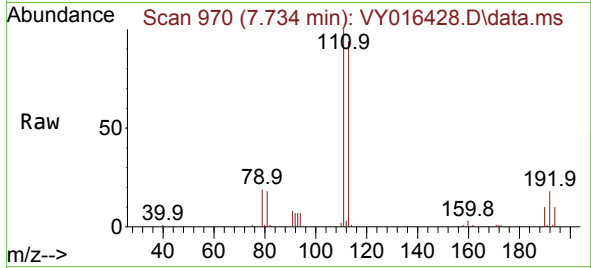
Tgt Ion:114 Resp: 172577
 Ion Ratio Lower Upper
 114 100
 63 17.3 0.0 42.4
 88 14.3 0.0 30.6



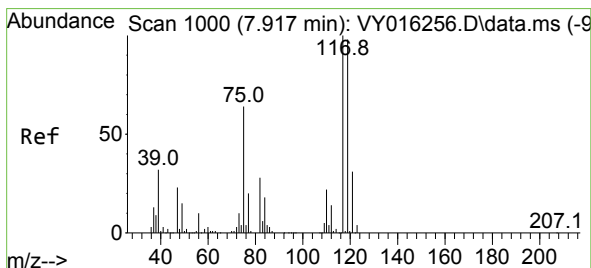
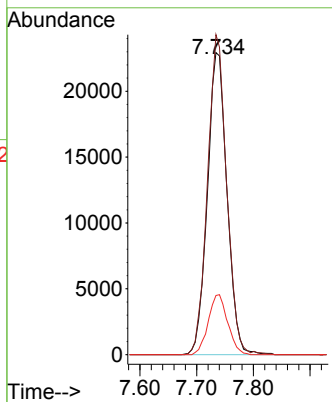
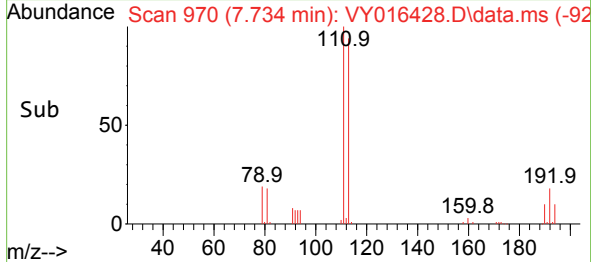


#35
 Dibromofluoromethane
 Concen: 56.201 ug/l
 RT: 7.734 min Scan# 91
 Delta R.T. -0.000 min
 Lab File: VY016428.D
 Acq: 20 Nov 2023 16:59

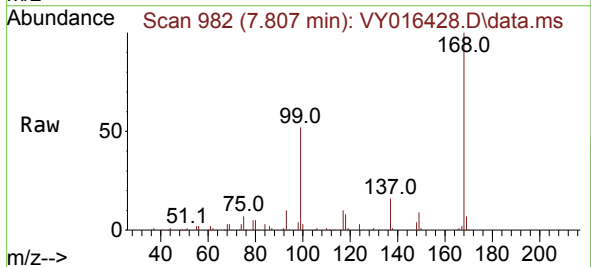
Instrument :
 MSVOA_Y
 ClientSampleId :



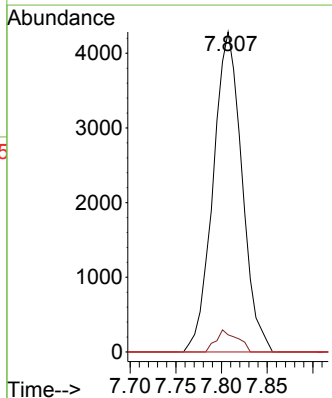
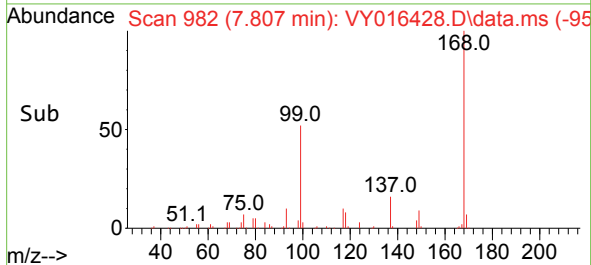
Tgt Ion:113 Resp: 55096
 Ion Ratio Lower Upper
 113 100
 111 103.2 81.3 121.9
 192 19.7 16.9 25.3

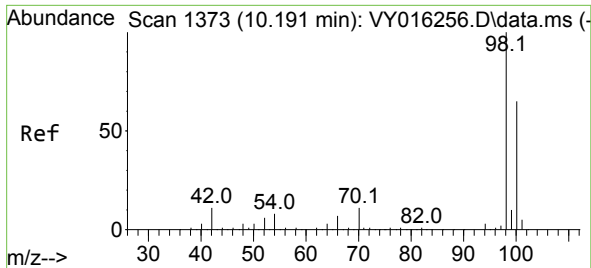


#38
 Carbon Tetrachloride
 Concen: 5.318 ug/l
 RT: 7.807 min Scan# 982
 Delta R.T. -0.110 min
 Lab File: VY016428.D
 Acq: 20 Nov 2023 16:59



Tgt Ion:117 Resp: 9395
 Ion Ratio Lower Upper
 117 100
 119 5.3 76.4 114.6#
 121 0.0 25.8 38.6#

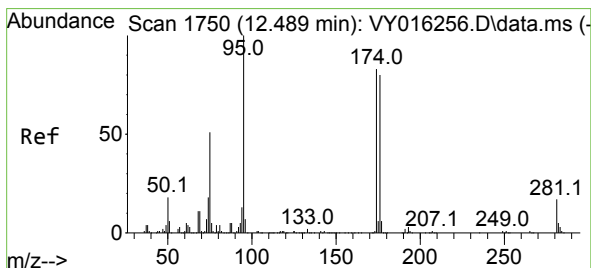
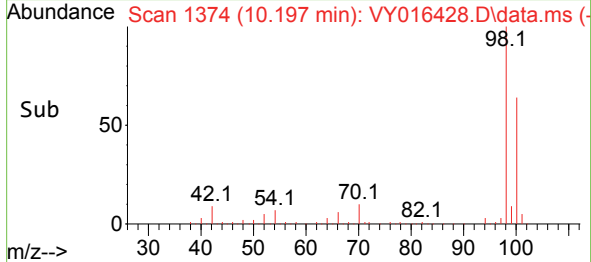
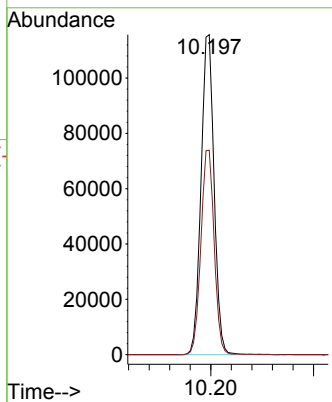
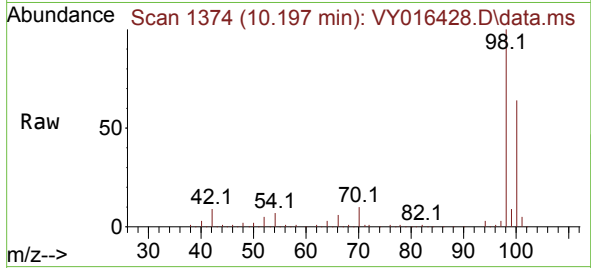




#50
 Toluene-d8
 Concen: 51.137 ug/l
 RT: 10.197 min Scan# 11
 Delta R.T. 0.006 min
 Lab File: VY016428.D
 Acq: 20 Nov 2023 16:59

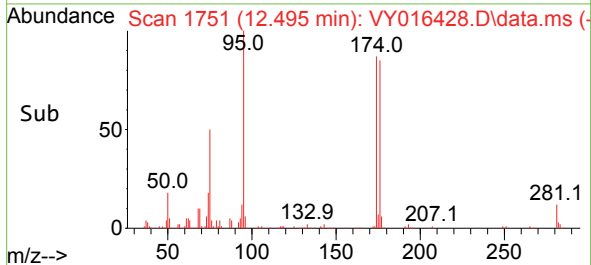
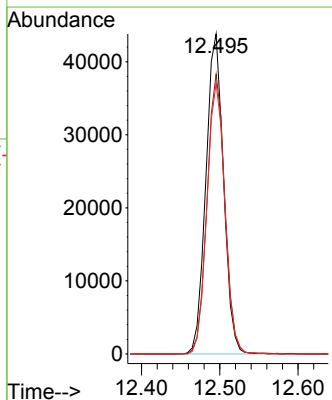
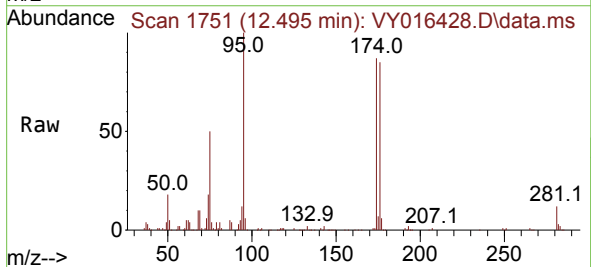
Instrument :
 MSVOA_Y
 ClientSampleId :

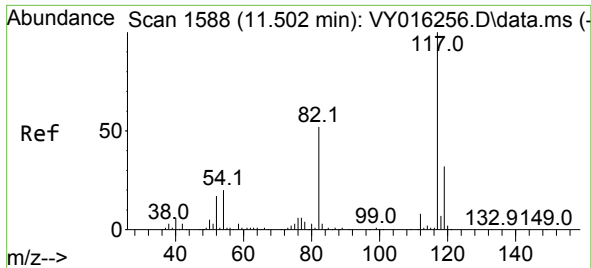
Tgt Ion: 98 Resp: 203295
 Ion Ratio Lower Upper
 98 100
 100 65.0 50.1 75.1



#62
 4-Bromofluorobenzene
 Concen: 52.944 ug/l
 RT: 12.495 min Scan# 1751
 Delta R.T. 0.006 min
 Lab File: VY016428.D
 Acq: 20 Nov 2023 16:59

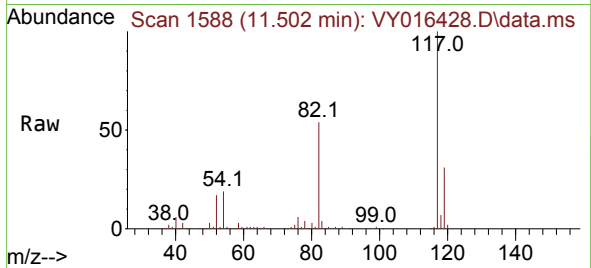
Tgt Ion: 95 Resp: 68361
 Ion Ratio Lower Upper
 95 100
 174 88.3 0.0 178.2
 176 85.7 0.0 173.8



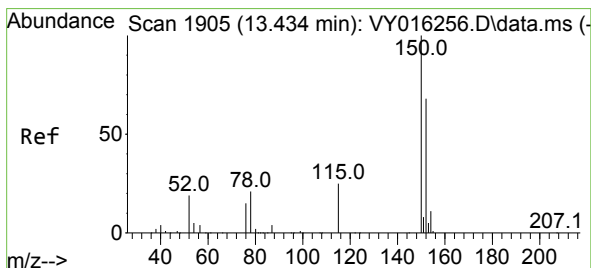
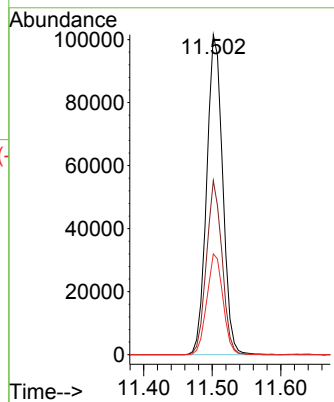
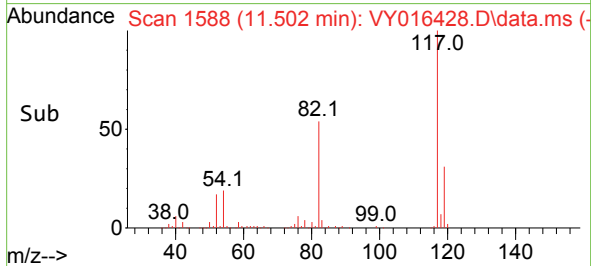


#63
 Chlorobenzene-d5
 Concen: 50.000 ug/l
 RT: 11.502 min Scan# 117
 Delta R.T. -0.000 min
 Lab File: VY016428.D
 Acq: 20 Nov 2023 16:59

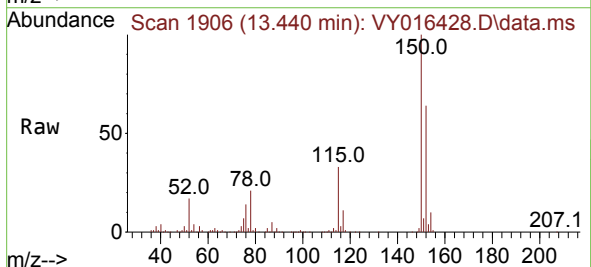
Instrument :
 MSVOA_Y
 ClientSampleId :



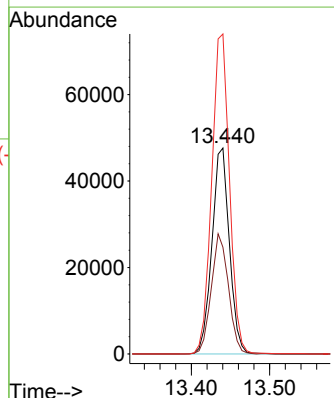
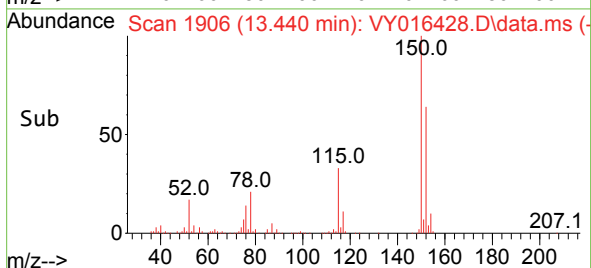
Tgt Ion:117 Resp: 165198
 Ion Ratio Lower Upper
 117 100
 82 54.4 43.4 65.0
 119 31.5 26.3 39.5

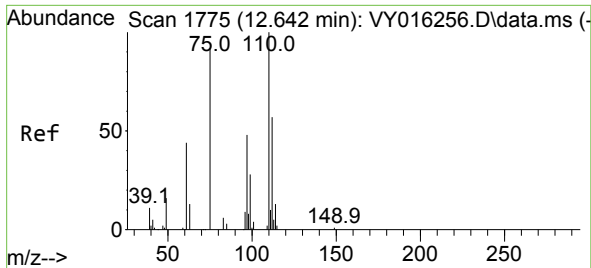


#72
 1,4-Dichlorobenzene-d4
 Concen: 50.000 ug/l
 RT: 13.440 min Scan# 1906
 Delta R.T. 0.006 min
 Lab File: VY016428.D
 Acq: 20 Nov 2023 16:59



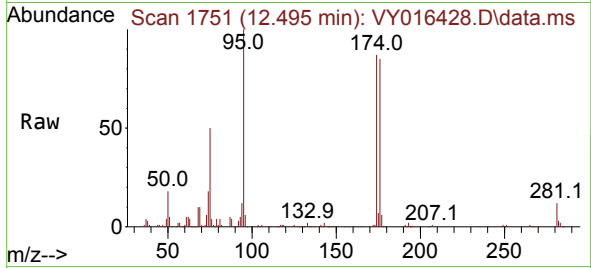
Tgt Ion:152 Resp: 73712
 Ion Ratio Lower Upper
 152 100
 115 57.4 28.8 86.5
 150 158.1 0.0 348.8



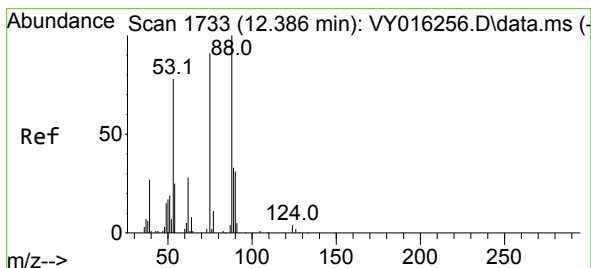
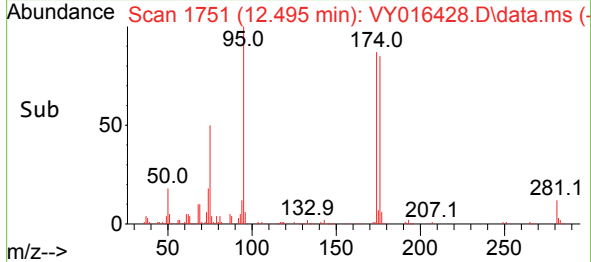
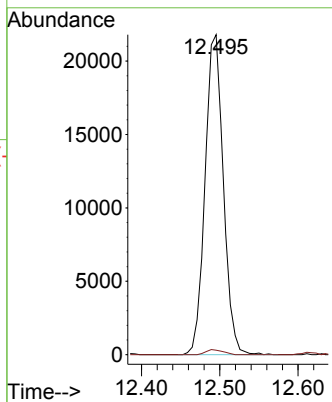


#76
 1,2,3-Trichloropropane
 Concen: 49.912 ug/l
 RT: 12.495 min Scan# 1751
 Delta R.T. -0.147 min
 Lab File: VY016428.D
 Acq: 20 Nov 2023 16:59

Instrument : MSVOA_Y
 ClientSampleId :



Tgt Ion: 75 Resp: 35293
 Ion Ratio Lower Upper
 75 100
 77 1.5 0.0 0.0#



#81
 trans-1,4-Dichloro-2-butene
 Concen: 108.337 ug/l
 RT: 12.495 min Scan# 1751
 Delta R.T. 0.109 min
 Lab File: VY016428.D
 Acq: 20 Nov 2023 16:59

Tgt Ion: 75 Resp: 35293
 Ion Ratio Lower Upper
 75 100
 53 0.0 77.8 116.8#
 89 0.1 37.4 56.0#

