

Data Path : Z:\VOASRV\HPCHEM1\MSVOA Y\DATA\VY112119\
 Data File : VY000776.D
 Acq On : 21 Nov 2019 18:17
 Operator : SY/MD
 Sample : K5959-08
 Misc : 8.43G/5ML/MSVOA Y/SOIL
 ALS Vial : 16 Sample Multiplier: 1

Instrument :
 MSVOA_Y
 ClientSampleId :
 WS-112019-4-5-GRAB-B4

Integration Parameters: RTEINT.P
 Integrator: RTE
 Smoothing : ON
 Sampling : 1
 Start Thrs: 0.2
 Stop Thrs : 0

Filtering: 5
 Min Area: 3 % of largest Peak
 Max Peaks: 100
 Peak Location: TOP

If leading or trailing edge < 100 prefer < Baseline drop else tangent >
 Peak separation: 5

Method : Z:\VOASRV\HPCHEM1\MSVOA_Y\METHODS\82Y103019S.M
 Title : SW846 8260

Signal : TIC

peak #	R.T. min	first scan	max scan	last scan	PK TY	peak height	corr. area	corr. % max.	% of total
1	1.865	17	21	28	rVB5	10168	19421	1.14%	0.215%
2	4.724	478	490	502	rBV2	24883	79998	4.70%	0.887%
3	7.730	973	983	989	rBV	223425	530869	31.19%	5.889%
4	7.803	989	995	1009	rVB	386307	861152	50.60%	9.553%
5	8.150	1042	1052	1064	rBV	239014	522207	30.68%	5.793%
6	8.699	1133	1142	1152	rBV	617561	1236788	72.67%	13.720%
7	8.943	1176	1182	1190	rBV3	25156	50948	2.99%	0.565%
8	10.181	1376	1385	1392	rBV	1013308	1702036	100.00%	18.881%
9	10.717	1466	1473	1480	rBV2	113184	193080	11.34%	2.142%
10	11.491	1591	1600	1611	rBV	853829	1409046	82.79%	15.631%
11	11.699	1627	1634	1643	rBV2	15645	31570	1.85%	0.350%
12	12.028	1676	1688	1696	rBV4	9146	25022	1.47%	0.278%
13	12.479	1755	1762	1769	rBV	646361	984548	57.85%	10.922%
14	12.637	1783	1788	1796	rVB7	10500	24495	1.44%	0.272%
15	12.808	1806	1816	1820	rBV7	11516	26796	1.57%	0.297%
16	13.034	1847	1853	1857	rBV4	18601	27859	1.64%	0.309%
17	13.119	1862	1867	1871	rVB3	16336	26406	1.55%	0.293%
18	13.424	1910	1917	1928	rBV	758001	1163821	68.38%	12.910%
19	13.747	1965	1970	1974	rBV7	18125	29744	1.75%	0.330%
20	13.966	2002	2006	2011	rVB5	18720	28614	1.68%	0.317%
21	14.259	2047	2054	2058	rBV8	10803	19968	1.17%	0.222%
22	14.680	2117	2123	2128	rBV7	8550	20255	1.19%	0.225%

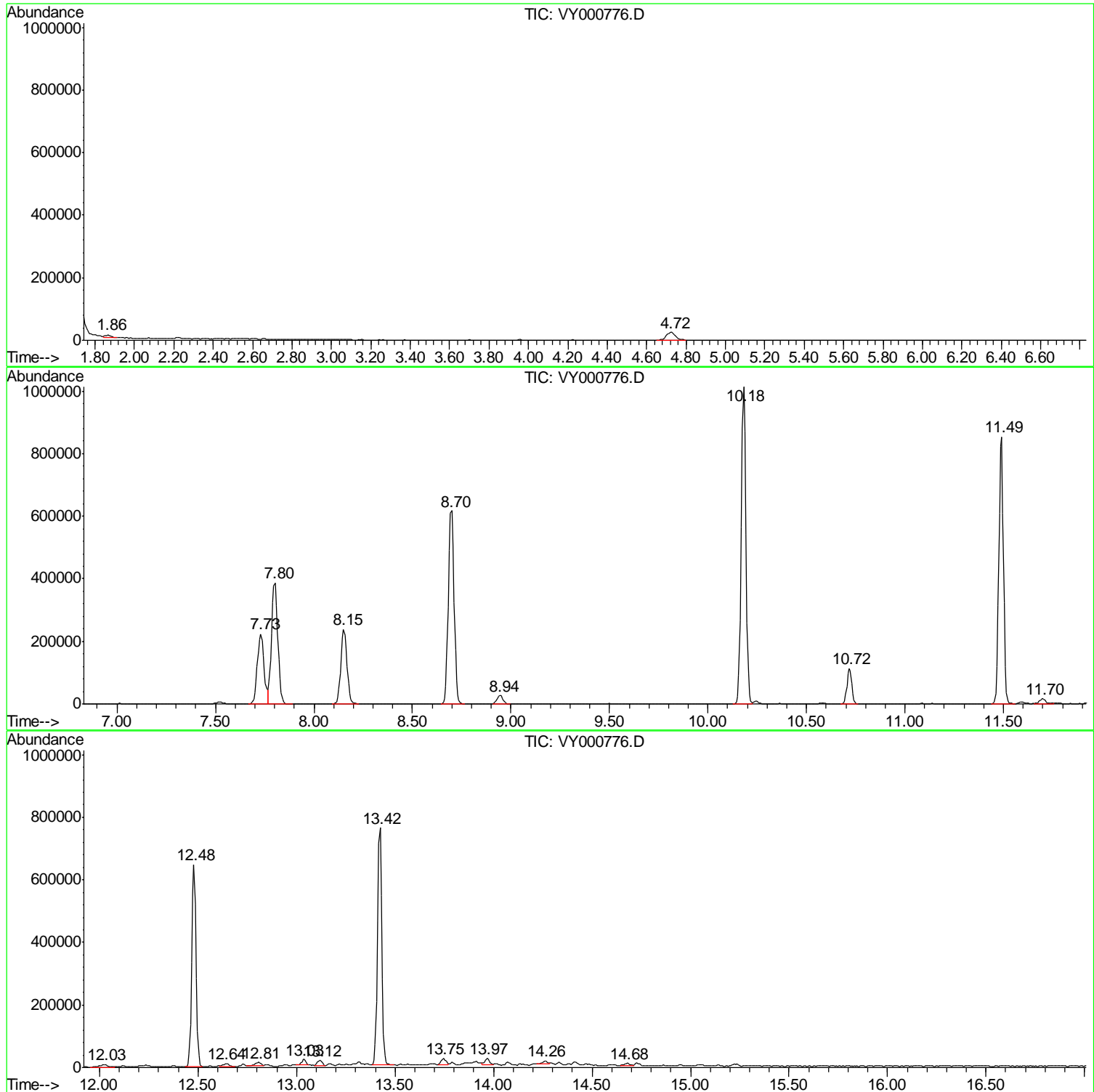
Sum of corrected areas: 9014643

Data Path : Z:\VOASRV\HPCHEM1\MSVOA Y\DATA\VY112119\
 Data File : VY000776.D
 Acq On : 21 Nov 2019 18:17
 Operator : SY/MD
 Sample : K5959-08
 Misc : 8.43G/5ML/MSVOA Y/SOIL
 ALS Vial : 16 Sample Multiplier: 1

Instrument :
 MSVOA_Y
 ClientSampleId :
 WS-112019-4-5-GRAB-B4

Quant Method : Z:\VOASRV\HPCHEM1\MSVOA_Y\METHODS\82Y103019S.M
 Quant Title : SW846 8260

TIC Library : C:\DATABASE\NIST11.L
 TIC Integration Parameters: LSCINT.P



Data Path : Z:\VOASRV\HPCHEM1\MSVOA_Y\DATA\VY112119\
Data File : VY000776.D
Acq On : 21 Nov 2019 18:17
Operator : SY/MD
Sample : K5959-08
Misc : 8.43G/5ML/MSVOA_Y/SOIL
ALS Vial : 16 Sample Multiplier: 1

Instrument :
MSVOA_Y
ClientSampleId :
WS-112019-4-5-GRAB-B4

Quant Method : Z:\VOASRV\HPCHEM1\MSVOA_Y\METHODS\82Y103019S.M
Quant Title : SW846 8260

TIC Library : C:\DATABASE\NIST11.L
TIC Integration Parameters: LSCINT.P

No Library Search Compounds Detected

Data Path : Z:\VOASRV\HPCHEM1\MSVOA_Y\DATA\VY112119\
Data File : VY000776.D
Acq On : 21 Nov 2019 18:17
Operator : SY/MD
Sample : K5959-08
Misc : 8.43G/5ML/MSVOA_Y/SOIL
ALS Vial : 16 Sample Multiplier: 1

Instrument :
MSVOA_Y
ClientSampleId :
WS-112019-4-5-GRAB-B4

Quant Method : Z:\VOASRV\HPCHEM1\MSVOA_Y\METHODS\82Y103019S.M
Quant Title : SW846 8260

TIC Library : C:\DATABASE\NIST11.L
TIC Integration Parameters: LSCINT.P

TIC Top Hit name	RT	EstConc	Units	Response	--Internal Standard--			
					#	RT	Resp	Conc
