

Data Path : Z:\voasrv\HPCHEM1\MSVOA_Y\Data\VY112123\
 Data File : VY016432.D
 Acq On : 21 Nov 2023 12:43
 Operator : SY/MD
 Sample : VY1121SBL01
 Misc : 5.00g/5.0mL/MSVOA_Y/SOIL
 ALS Vial : 11 Sample Multiplier: 1

Instrument :
 MSVOA_Y
 ClientSampleId :

Quant Time: Nov 22 01:11:32 2023
 Quant Method : Z:\voasrv\HPCHEM1\MSVOA_Y\methods\82Y110823S.M
 Quant Title : SW846 8260
 QLast Update : Thu Nov 09 00:45:52 2023
 Response via : Initial Calibration

Compound	R.T.	QIon	Response	Conc	Units	Dev(Min)

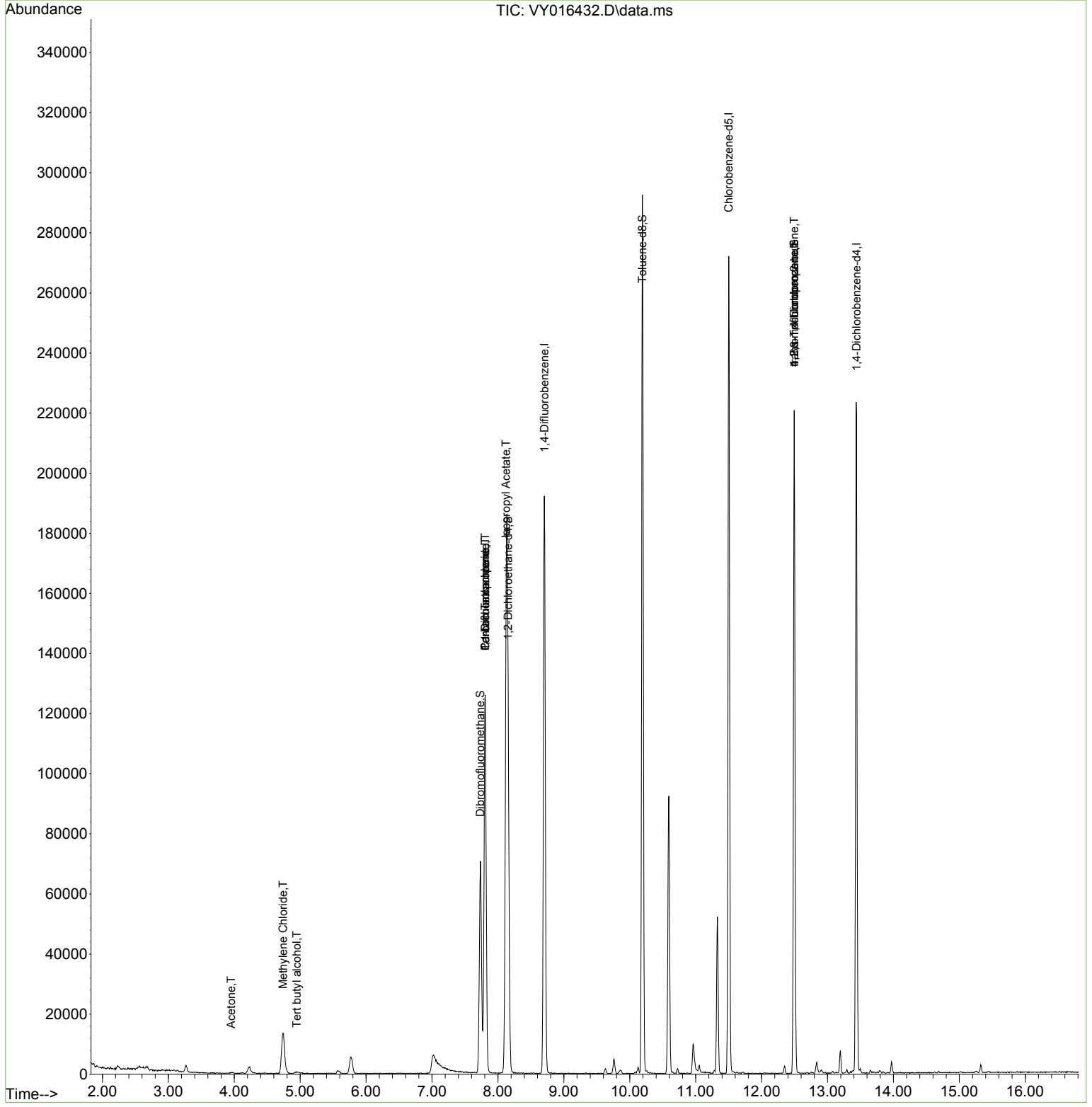
Internal Standards						
1) Pentafluorobenzene	7.807	168	100146	50.000	ug/l	0.00
34) 1,4-Difluorobenzene	8.703	114	172732	50.000	ug/l	0.00
63) Chlorobenzene-d5	11.502	117	153785	50.000	ug/l	0.00
72) 1,4-Dichlorobenzene-d4	13.440	152	59872	50.000	ug/l	0.00
System Monitoring Compounds						
33) 1,2-Dichloroethane-d4	8.155	65	48715	53.223	ug/l	0.00
Spiked Amount	50.000	Range	50 - 163	Recovery	=	106.440%
35) Dibromofluoromethane	7.734	113	50617	51.585	ug/l	0.00
Spiked Amount	50.000	Range	54 - 147	Recovery	=	103.180%
50) Toluene-d8	10.191	98	198251	49.823	ug/l	0.00
Spiked Amount	50.000	Range	58 - 134	Recovery	=	99.640%
62) 4-Bromofluorobenzene	12.495	95	60038	46.457	ug/l	0.00
Spiked Amount	50.000	Range	30 - 143	Recovery	=	92.920%
Target Compounds						
					Qvalue	
11) Tert butyl alcohol	4.948	59	414	5.776	ug/l #	89
16) Acetone	3.954	43	226	1.493	ug/l	90
20) Methylene Chloride	4.741	84	11417	7.732	ug/l #	83
36) 1,1-Dichloropropene	7.807	75	7732	4.538	ug/l #	49
38) Carbon Tetrachloride	7.807	117	9981	5.644	ug/l #	16
43) Isopropyl Acetate	8.124	43	3433	2.580	ug/l #	1
76) 1,2,3-Trichloropropane	12.495	75	30247	52.663	ug/l #	100
81) trans-1,4-Dichloro-2-b...	12.495	75	30247	114.310	ug/l #	11

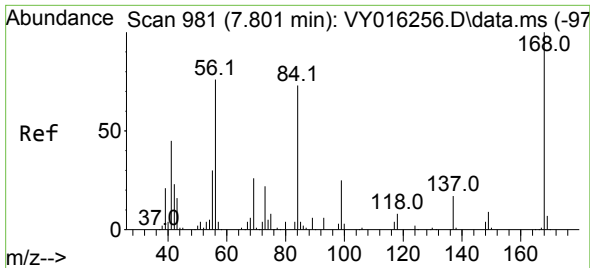
(#) = qualifier out of range (m) = manual integration (+) = signals summed

Data Path : Z:\voasrv\HPCHEM1\MSVOA_Y\Data\VY112123\
 Data File : VY016432.D
 Acq On : 21 Nov 2023 12:43
 Operator : SY/MD
 Sample : VY1121SBL01
 Misc : 5.00g/5.0mL/MSVOA_Y/SOIL
 ALS Vial : 11 Sample Multiplier: 1

Instrument :
 MSVOA_Y
 ClientSampleId :

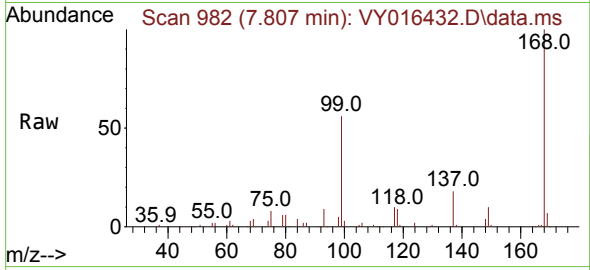
Quant Time: Nov 22 01:11:32 2023
 Quant Method : Z:\voasrv\HPCHEM1\MSVOA_Y\methods\82Y110823S.M
 Quant Title : SW846 8260
 QLast Update : Thu Nov 09 00:45:52 2023
 Response via : Initial Calibration



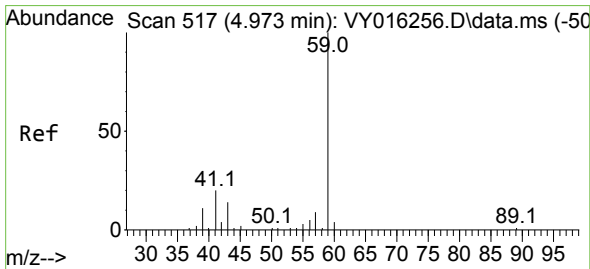
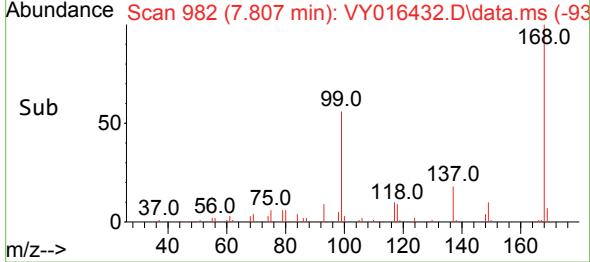
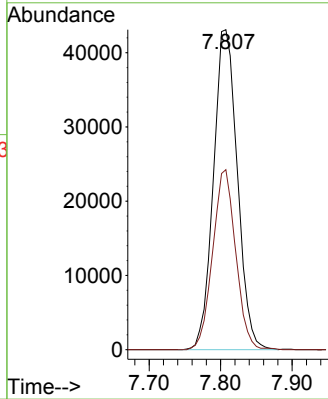


#1
 Pentafluorobenzene
 Concen: 50.000 ug/l
 RT: 7.807 min Scan# 981
 Delta R.T. 0.006 min
 Lab File: VY016432.D
 Acq: 21 Nov 2023 12:43

Instrument :
 MSVOA_Y
 ClientSampleId :

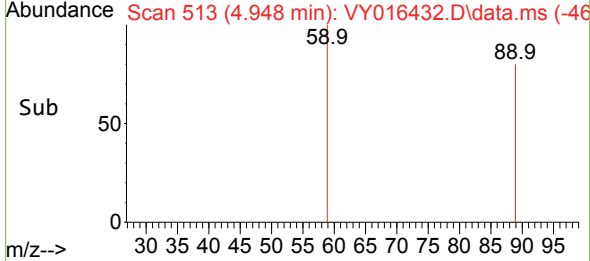
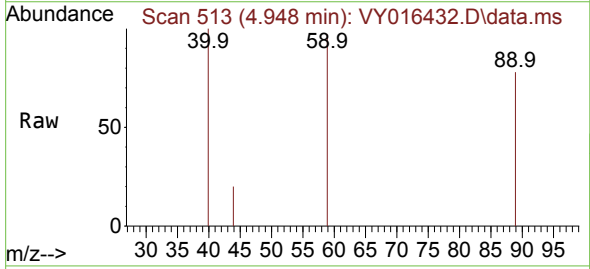
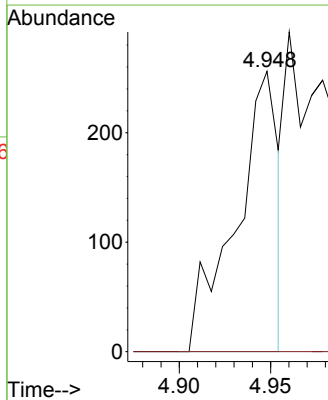


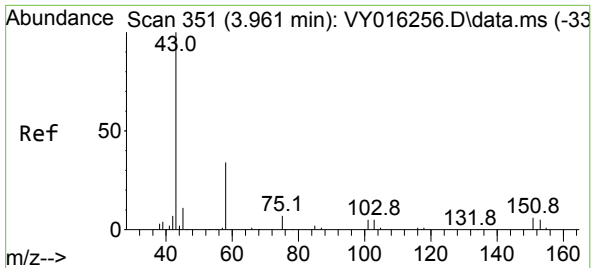
Tgt Ion:168 Resp: 100146
 Ion Ratio Lower Upper
 168 100
 99 56.3 43.4 65.0



#11
 Tert butyl alcohol
 Concen: 5.776 ug/l
 RT: 4.948 min Scan# 513
 Delta R.T. -0.024 min
 Lab File: VY016432.D
 Acq: 21 Nov 2023 12:43

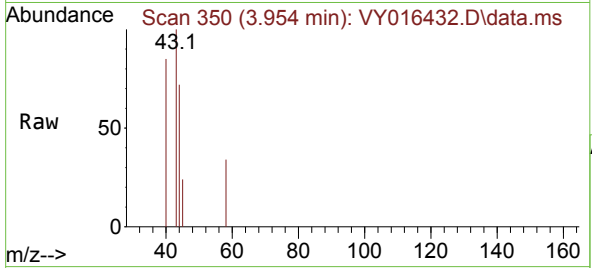
Tgt Ion: 59 Resp: 414
 Ion Ratio Lower Upper
 59 100
 57 0.0 3.0 4.4#



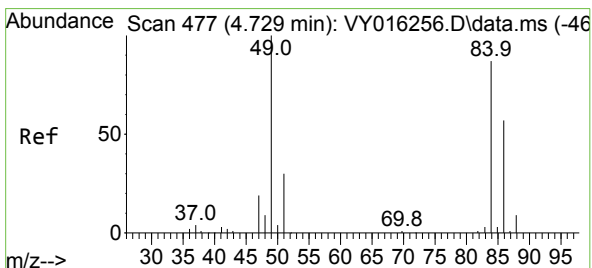
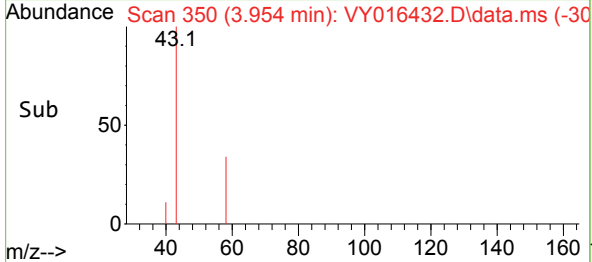
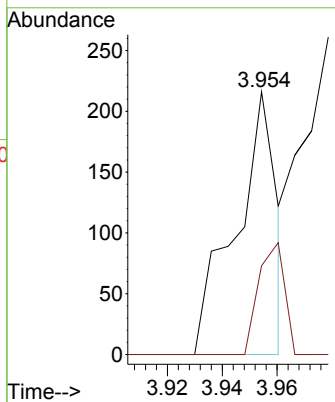


#16
 Acetone
 Concen: 1.493 ug/l
 RT: 3.954 min Scan# 311
 Delta R.T. -0.006 min
 Lab File: VY016432.D
 Acq: 21 Nov 2023 12:43

Instrument : MSVOA_Y
 ClientSampleId :

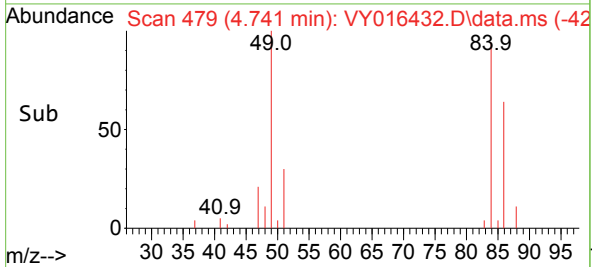
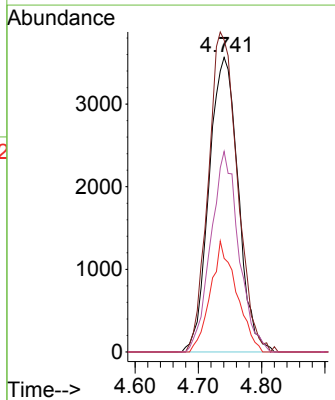
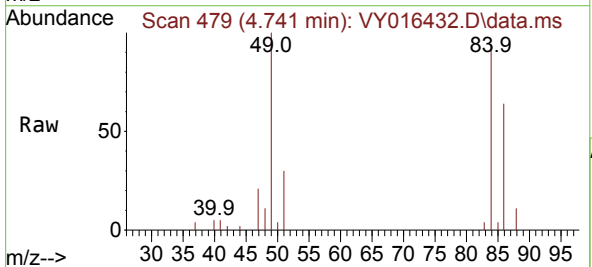


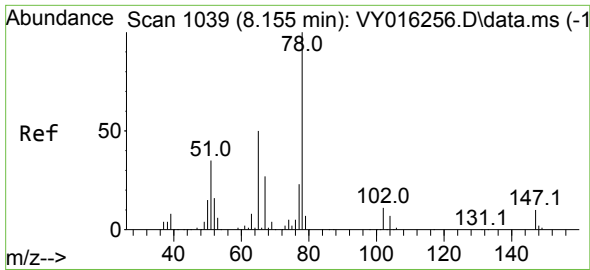
Tgt Ion: 43 Resp: 226
 Ion Ratio Lower Upper
 43 100
 58 33.8 22.7 34.1



#20
 Methylene Chloride
 Concen: 7.732 ug/l
 RT: 4.741 min Scan# 479
 Delta R.T. 0.012 min
 Lab File: VY016432.D
 Acq: 21 Nov 2023 12:43

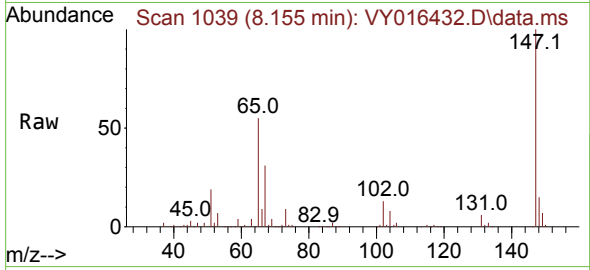
Tgt Ion: 84 Resp: 11417
 Ion Ratio Lower Upper
 84 100
 49 105.9 106.9 160.3#
 51 31.8 33.2 49.8#
 86 68.0 51.0 76.6



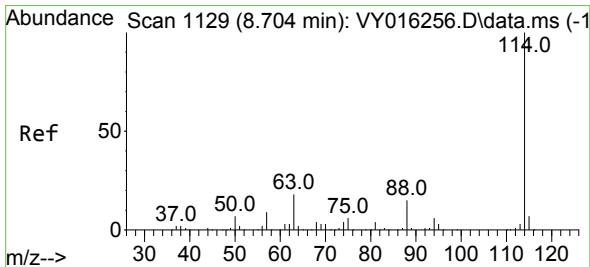
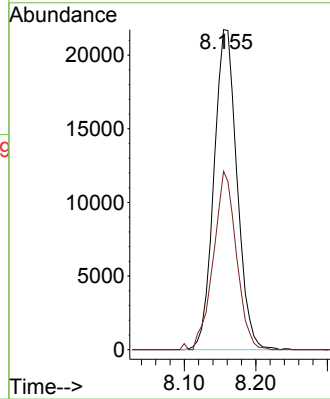
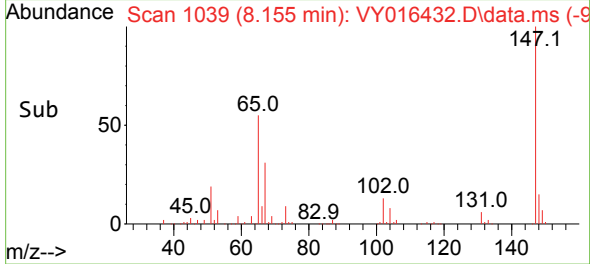


#33
 1,2-Dichloroethane-d4
 Concen: 53.223 ug/l
 RT: 8.155 min Scan# 1039
 Delta R.T. -0.000 min
 Lab File: VY016432.D
 Acq: 21 Nov 2023 12:43

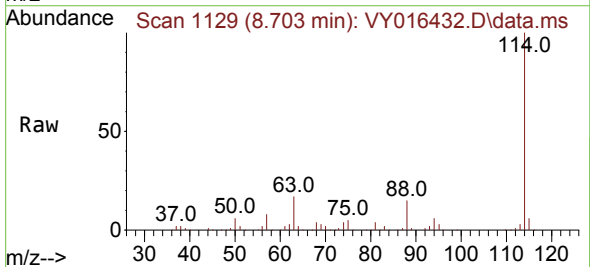
Instrument : MSVOA_Y
 ClientSampleId :



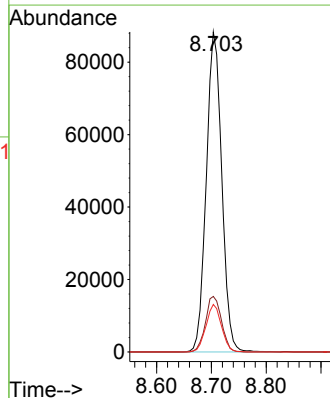
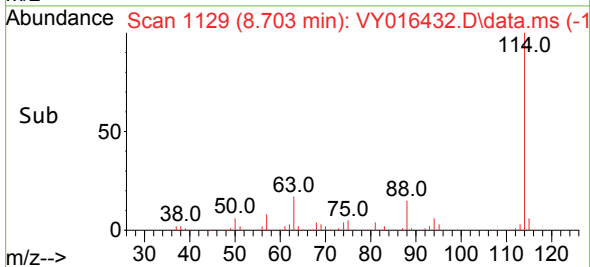
Tgt Ion: 65 Resp: 48715
 Ion Ratio Lower Upper
 65 100
 67 55.7 0.0 101.8

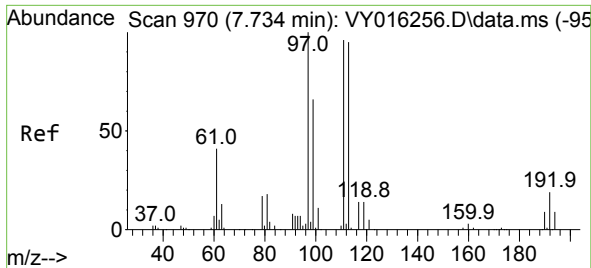


#34
 1,4-Difluorobenzene
 Concen: 50.000 ug/l
 RT: 8.703 min Scan# 1129
 Delta R.T. -0.000 min
 Lab File: VY016432.D
 Acq: 21 Nov 2023 12:43



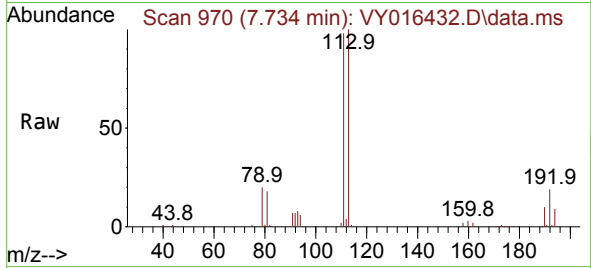
Tgt Ion: 114 Resp: 172732
 Ion Ratio Lower Upper
 114 100
 63 17.4 0.0 42.4
 88 14.9 0.0 30.6



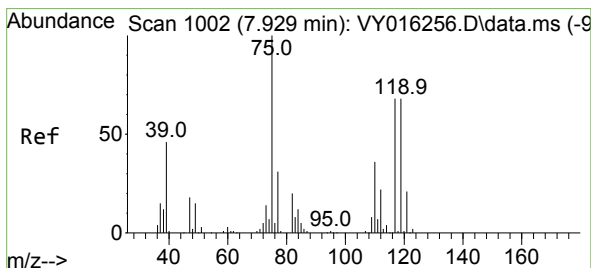
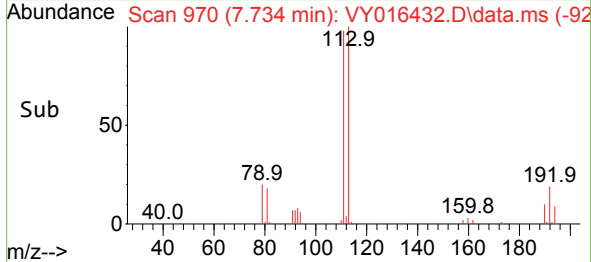
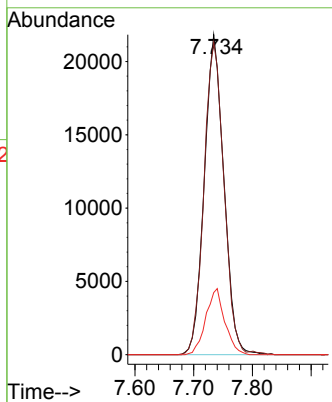


#35
 Dibromofluoromethane
 Concen: 51.585 ug/l
 RT: 7.734 min Scan# 91
 Delta R.T. -0.000 min
 Lab File: VY016432.D
 Acq: 21 Nov 2023 12:43

Instrument : MSVOA_Y
 ClientSampleId :

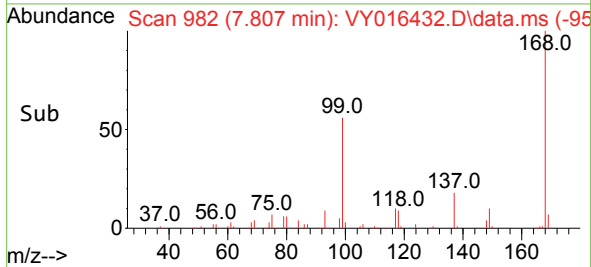
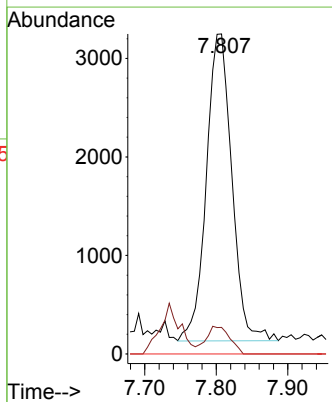
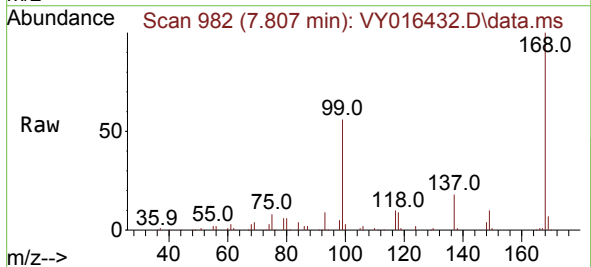


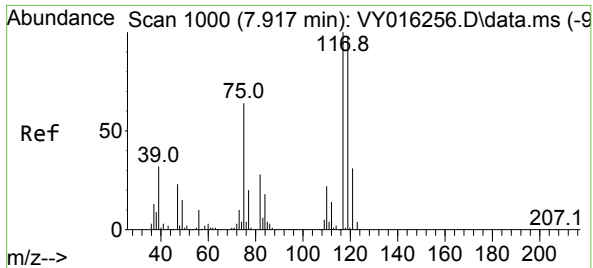
Tgt Ion: 113 Resp: 50617
 Ion Ratio Lower Upper
 113 100
 111 99.7 81.3 121.9
 192 20.0 16.9 25.3



#36
 1,1-Dichloropropene
 Concen: 4.538 ug/l
 RT: 7.807 min Scan# 982
 Delta R.T. -0.122 min
 Lab File: VY016432.D
 Acq: 21 Nov 2023 12:43

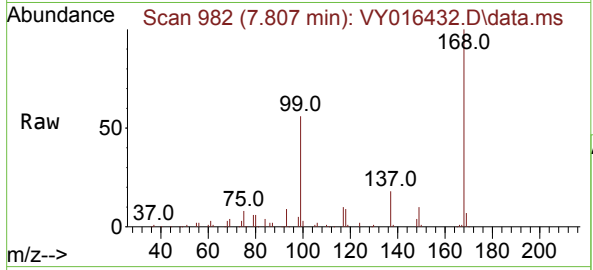
Tgt Ion: 75 Resp: 7732
 Ion Ratio Lower Upper
 75 100
 110 8.3 17.8 53.5#
 77 0.0 24.4 36.6#



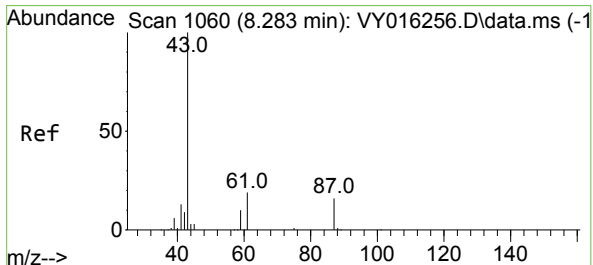
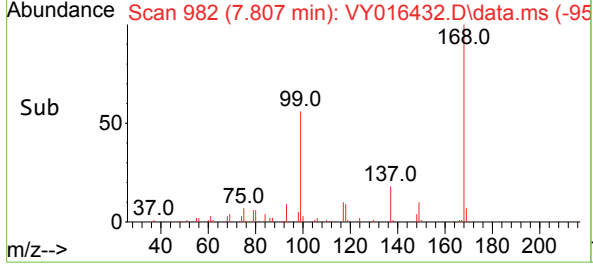
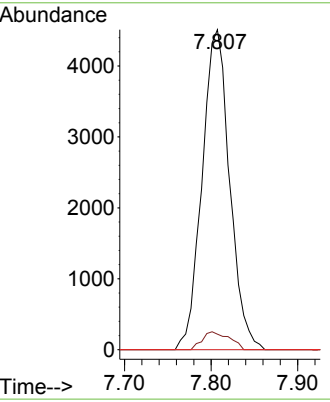


#38
 Carbon Tetrachloride
 Concen: 5.644 ug/l
 RT: 7.807 min Scan# 91
 Delta R.T. -0.110 min
 Lab File: VY016432.D
 Acq: 21 Nov 2023 12:43

Instrument : MSVOA_Y
 ClientSampleId :

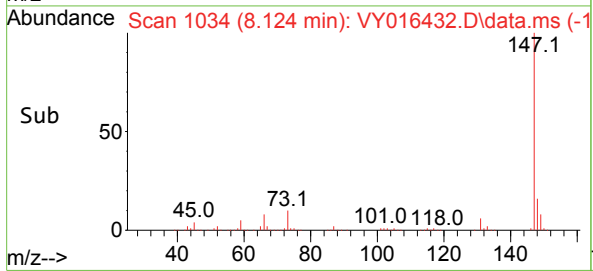
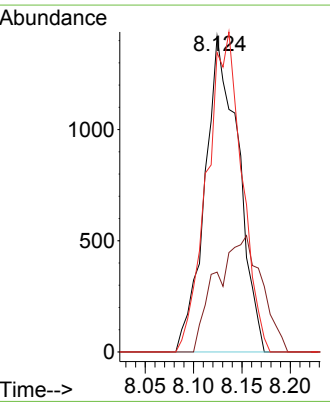
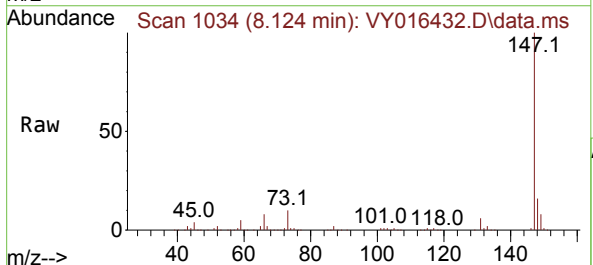


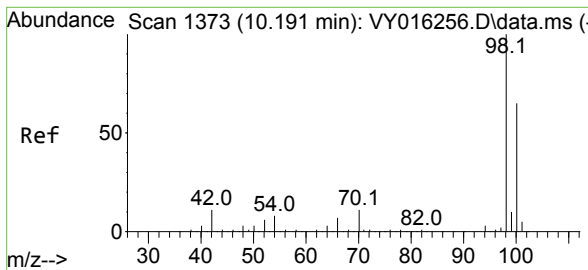
Tgt Ion:117 Resp: 9981
 Ion Ratio Lower Upper
 117 100
 119 4.9 76.4 114.6#
 121 0.0 25.8 38.6#



#43
 Isopropyl Acetate
 Concen: 2.580 ug/l
 RT: 8.124 min Scan# 1034
 Delta R.T. -0.159 min
 Lab File: VY016432.D
 Acq: 21 Nov 2023 12:43

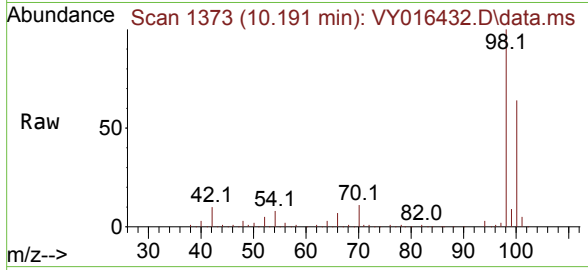
Tgt Ion: 43 Resp: 3433
 Ion Ratio Lower Upper
 43 100
 61 0.0 21.1 31.7#
 87 105.1 9.8 14.8#



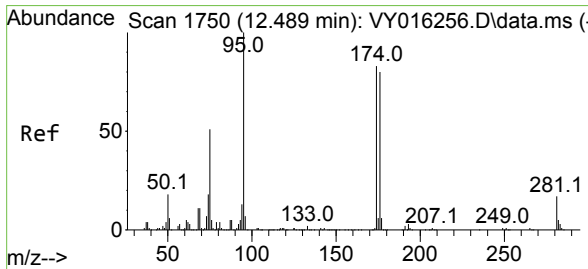
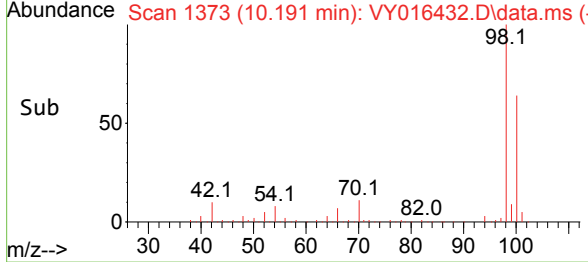
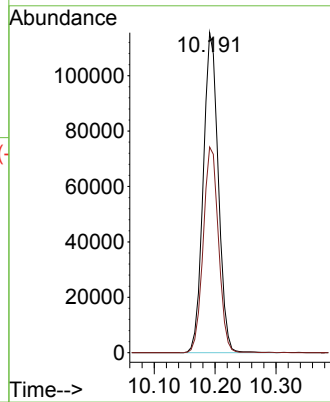


#50
 Toluene-d8
 Concen: 49.823 ug/l
 RT: 10.191 min Scan# 11
 Delta R.T. -0.000 min
 Lab File: VY016432.D
 Acq: 21 Nov 2023 12:43

Instrument :
 MSVOA_Y
 ClientSampleId :

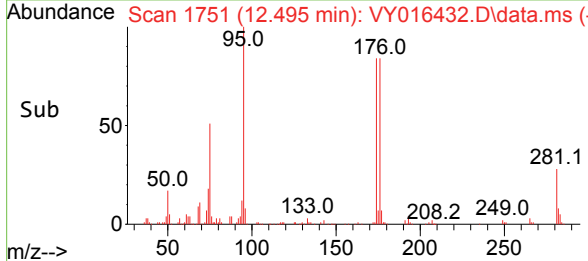
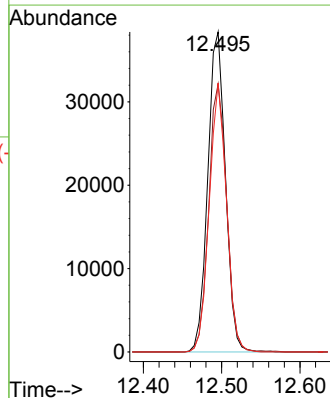
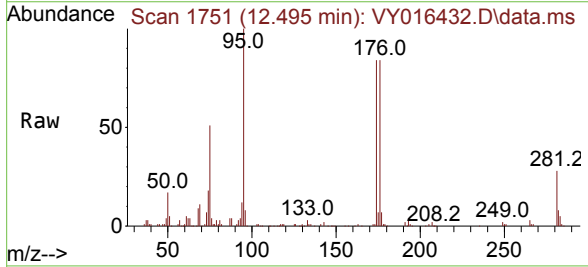


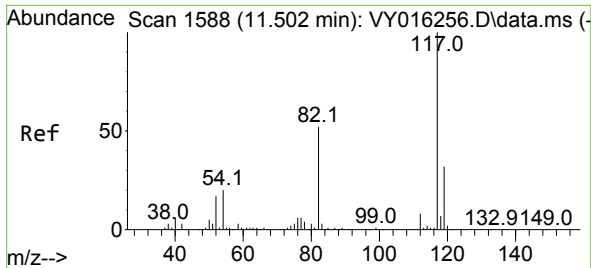
Tgt Ion: 98 Resp: 198251
 Ion Ratio Lower Upper
 98 100
 100 65.1 50.1 75.1



#62
 4-Bromofluorobenzene
 Concen: 46.457 ug/l
 RT: 12.495 min Scan# 1751
 Delta R.T. 0.006 min
 Lab File: VY016432.D
 Acq: 21 Nov 2023 12:43

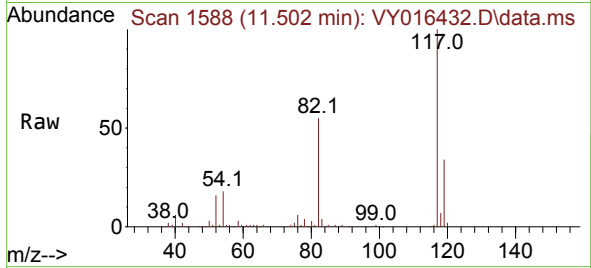
Tgt Ion: 95 Resp: 60038
 Ion Ratio Lower Upper
 95 100
 174 85.3 0.0 178.2
 176 82.1 0.0 173.8



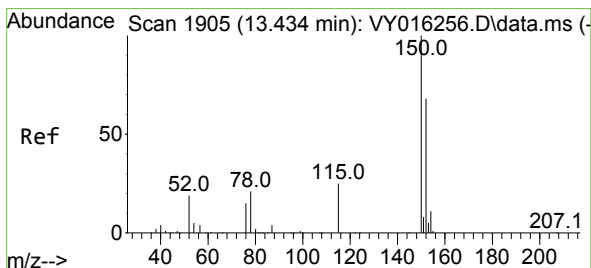
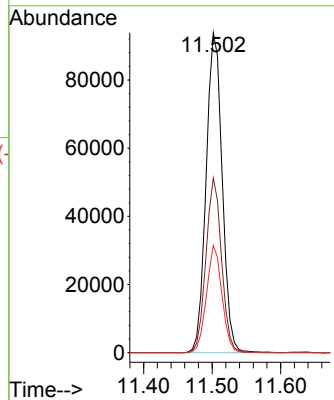
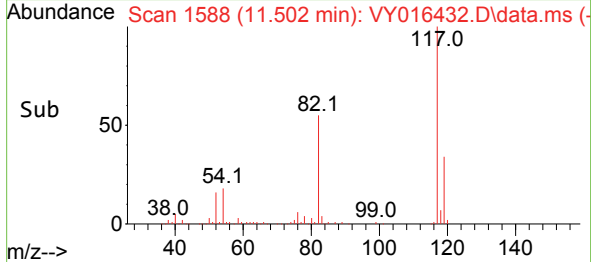


#63
 Chlorobenzene-d5
 Concen: 50.000 ug/l
 RT: 11.502 min Scan# 11
 Delta R.T. -0.000 min
 Lab File: VY016432.D
 Acq: 21 Nov 2023 12:43

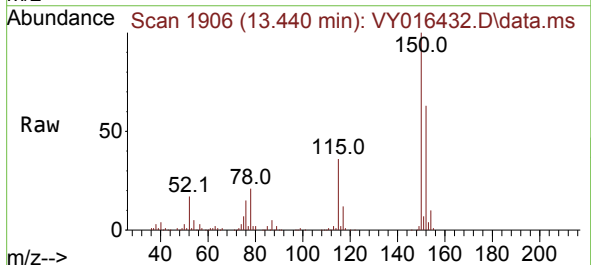
Instrument :
 MSVOA_Y
 ClientSampleId :



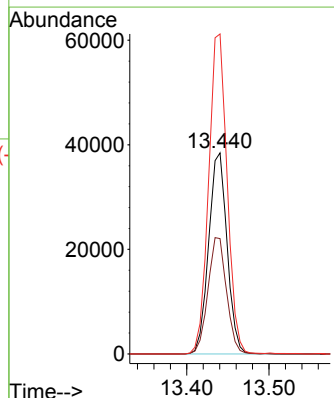
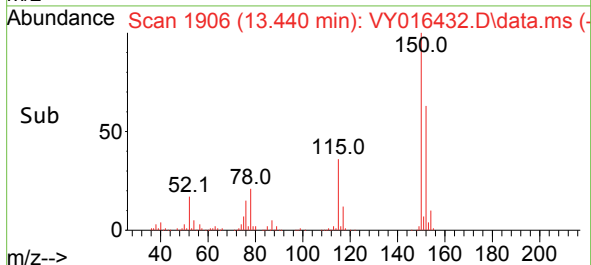
Tgt Ion:117 Resp: 153785
 Ion Ratio Lower Upper
 117 100
 82 54.6 43.4 65.0
 119 33.5 26.3 39.5

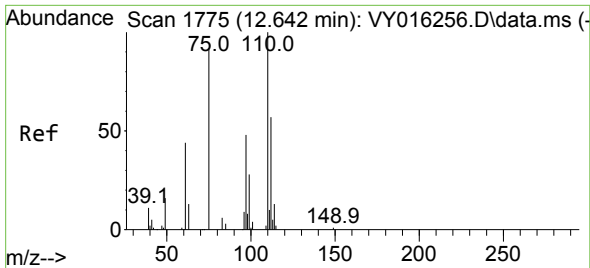


#72
 1,4-Dichlorobenzene-d4
 Concen: 50.000 ug/l
 RT: 13.440 min Scan# 1906
 Delta R.T. 0.006 min
 Lab File: VY016432.D
 Acq: 21 Nov 2023 12:43



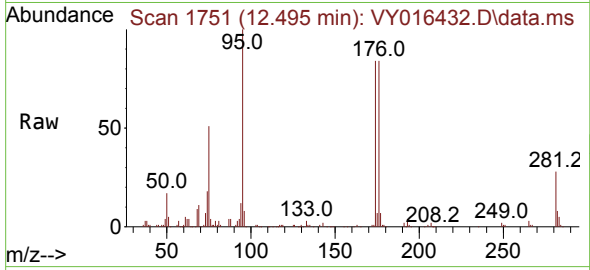
Tgt Ion:152 Resp: 59872
 Ion Ratio Lower Upper
 152 100
 115 58.4 28.8 86.5
 150 159.5 0.0 348.8



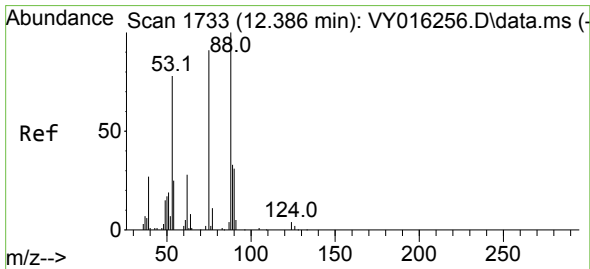
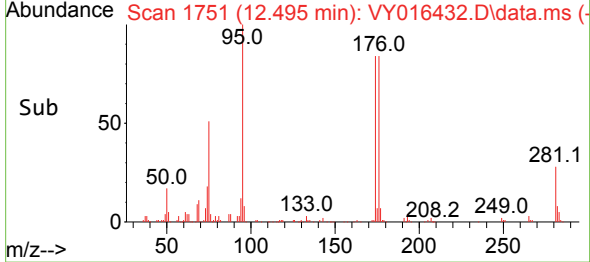
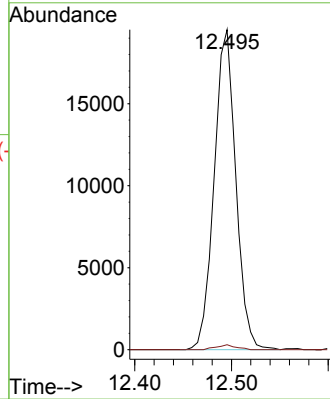


#76
 1,2,3-Trichloropropane
 Concen: 52.663 ug/l
 RT: 12.495 min Scan# 1751
 Delta R.T. -0.146 min
 Lab File: VY016432.D
 Acq: 21 Nov 2023 12:43

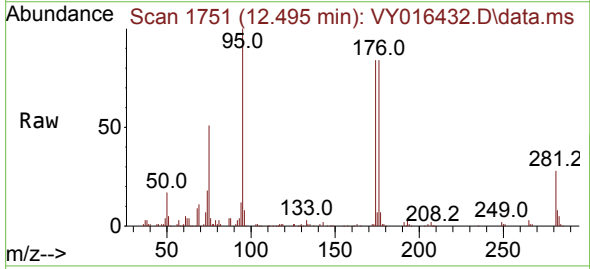
Instrument : MSVOA_Y
 ClientSampleId :



Tgt Ion: 75 Resp: 30247
 Ion Ratio Lower Upper
 75 100
 77 1.4 0.0 0.0#



#81
 trans-1,4-Dichloro-2-butene
 Concen: 114.310 ug/l
 RT: 12.495 min Scan# 1751
 Delta R.T. 0.110 min
 Lab File: VY016432.D
 Acq: 21 Nov 2023 12:43



Tgt Ion: 75 Resp: 30247
 Ion Ratio Lower Upper
 75 100
 53 0.0 77.8 116.8#
 89 0.1 37.4 56.0#

