

Data Path : Z:\voasrv\HPCHEM1\MSVOA_Y\Data\VY112124\
 Data File : VY020379.D
 Acq On : 21 Nov 2024 12:12
 Operator : SY/MD
 Sample : P4852-03
 Misc : 5.14g/5.0mL/MSVOA_Y/SOIL/B
 ALS Vial : 8 Sample Multiplier: 1

Instrument :
 MSVOA_Y
 ClientSampleId :
 COMP-3

Integration Parameters: RTEINT.P
 Integrator: RTE
 Smoothing : ON
 Sampling : 1
 Start Thrs: 0.2
 Stop Thrs : 0
 Filtering: 5
 Min Area: 3 % of largest Peak
 Max Peaks: 100
 Peak Location: TOP

If leading or trailing edge < 100 prefer < Baseline drop else tangent >
 Peak separation: 5

Method : Z:\voasrv\HPCHEM1\MSVOA_Y\methods\82Y111924S.M
 Title : SW846 8260

Signal : TIC: VY020379.D\data.ms

peak #	R.T. min	first scan	max scan	last scan	PK TY	peak height	corr. area	corr. % max.	% of total
1	6.890	833	848	859	rBV2	11856	37179	4.35%	0.849%
2	7.640	961	971	976	rBV	113171	272917	31.90%	6.229%
3	7.713	976	983	995	rVB	180465	418834	48.96%	9.559%
4	8.061	1028	1040	1050	rBV	97920	223981	26.18%	5.112%
5	8.616	1123	1131	1146	rBV	321260	631391	73.80%	14.410%
6	10.109	1368	1376	1392	rBV	496297	855507	100.00%	19.525%
7	10.506	1433	1441	1448	rBV2	6138	11386	1.33%	0.260%
8	10.878	1496	1502	1511	rBV2	8560	14971	1.75%	0.342%
9	11.414	1583	1590	1601	rBV	458272	761263	88.98%	17.374%
10	12.408	1746	1753	1765	rBV	354522	552047	64.53%	12.599%
11	13.347	1901	1907	1915	rBV	382444	590243	68.99%	13.471%
12	13.889	1990	1996	2002	rVB2	7744	11884	1.39%	0.271%

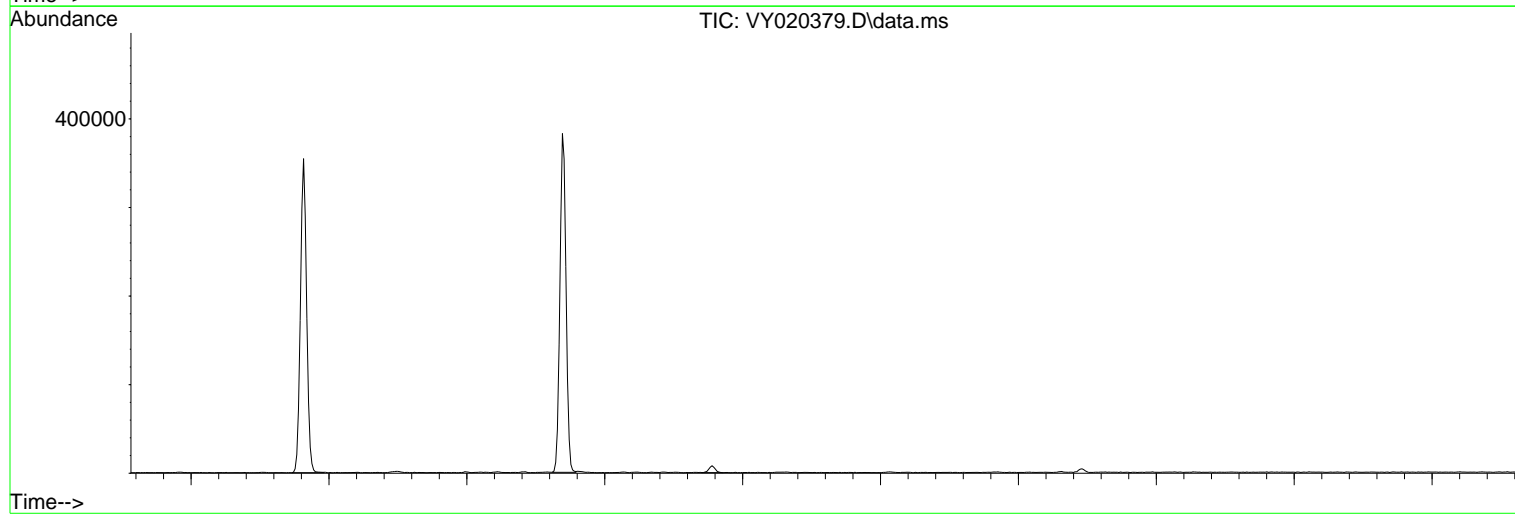
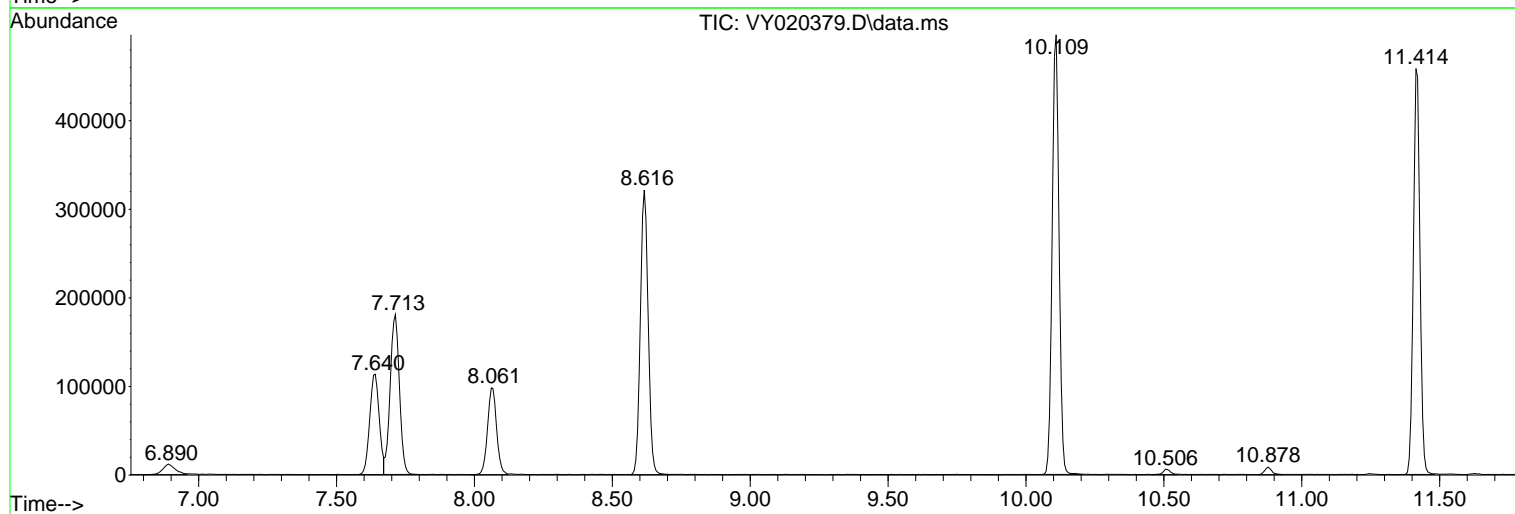
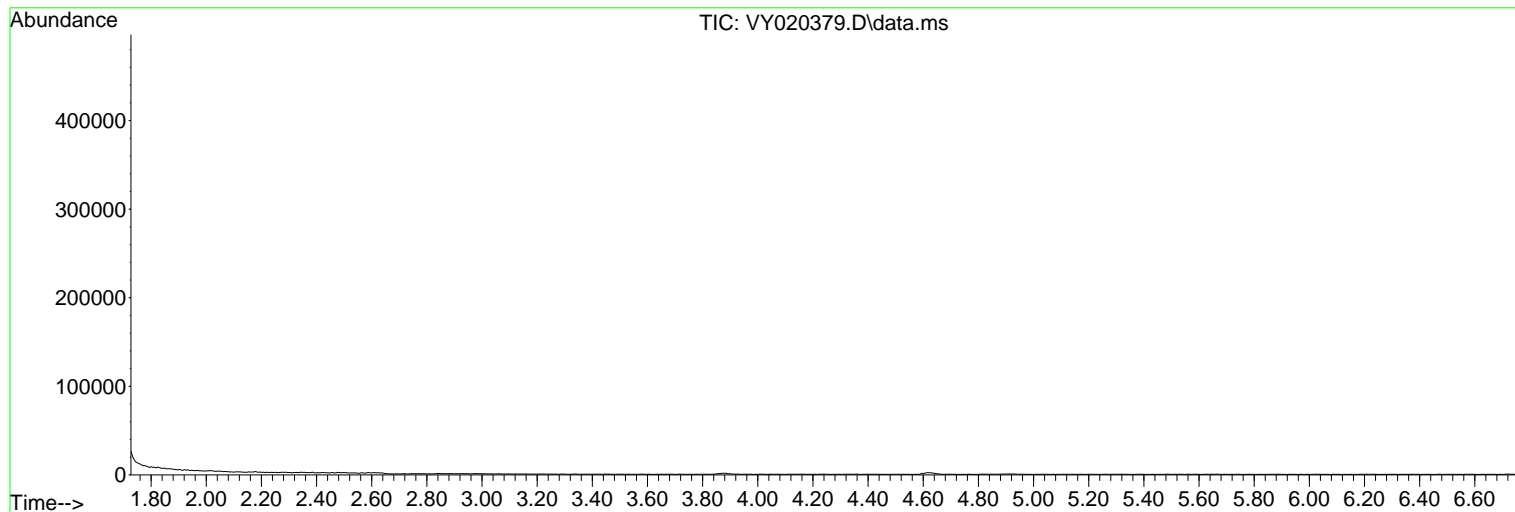
Sum of corrected areas: 4381603

Data Path : Z:\voasrv\HPCHEM1\MSVOA_Y\Data\VY112124\
 Data File : VY020379.D
 Acq On : 21 Nov 2024 12:12
 Operator : SY/MD
 Sample : P4852-03
 Misc : 5.14g/5.0mL/MSVOA_Y/SOIL/B
 ALS Vial : 8 Sample Multiplier: 1

Instrument :
 MSVOA_Y
 ClientSampleId :
 COMP-3

Quant Method : Z:\voasrv\HPCHEM1\MSVOA_Y\methods\82Y111924S.M
 Quant Title : SW846 8260

TIC Library : C:\Database\NIST20.L
 TIC Integration Parameters: LSCINT.P



Library Search Compound Report

Data Path : Z:\voasrv\HPCHEM1\MSVOA_Y\Data\VY112124\
Data File : VY020379.D
Acq On : 21 Nov 2024 12:12
Operator : SY/MD
Sample : P4852-03
Misc : 5.14g/5.0mL/MSVOA_Y/SOIL/B
ALS Vial : 8 Sample Multiplier: 1

Instrument :
MSVOA_Y
ClientSampleId :
COMP-3

Quant Method : Z:\voasrv\HPCHEM1\MSVOA_Y\methods\82Y111924S.M
Quant Title : SW846 8260

TIC Library : C:\Database\NIST20.L
TIC Integration Parameters: LSCINT.P

No Library Search Compounds Detected

Data Path : Z:\voasrv\HPCHEM1\MSVOA_Y\Data\VY112124\
Data File : VY020379.D
Acq On : 21 Nov 2024 12:12
Operator : SY/MD
Sample : P4852-03
Misc : 5.14g/5.0mL/MSVOA_Y/SOIL/B
ALS Vial : 8 Sample Multiplier: 1

Instrument :
MSVOA_Y
ClientSampleId :
COMP-3

Quant Method : Z:\voasrv\HPCHEM1\MSVOA_Y\methods\82Y111924S.M
Quant Title : SW846 8260

TIC Library : C:\Database\NIST20.L
TIC Integration Parameters: LSCINT.P

TIC Top Hit name	RT	EstConc	Units	Response	#	RT	Resp	Conc
------------------	----	---------	-------	----------	---	----	------	------

-----|