

Data Path : Z:\voasrv\HPCHEM1\MSVOA_Y\Data\VY112425\
 Data File : VY023787.D
 Acq On : 24 Nov 2025 13:54
 Operator : SY/MD
 Sample : VY1124SBL01
 Misc : 5.00g/5.0mL/MSVOA_Y/SOIL
 ALS Vial : 3 Sample Multiplier: 1

Instrument :
 MSVOA_Y
 ClientSampleId :
 VY1124SBL01

Quant Time: Nov 26 02:09:44 2025
 Quant Method : Z:\voasrv\HPCHEM1\MSVOA_Y\methods\82Y110425S.M
 Quant Title : SW846 8260
 QLast Update : Wed Nov 05 04:41:50 2025
 Response via : Initial Calibration

Compound	R.T.	QIon	Response	Conc	Units	Dev(Min)

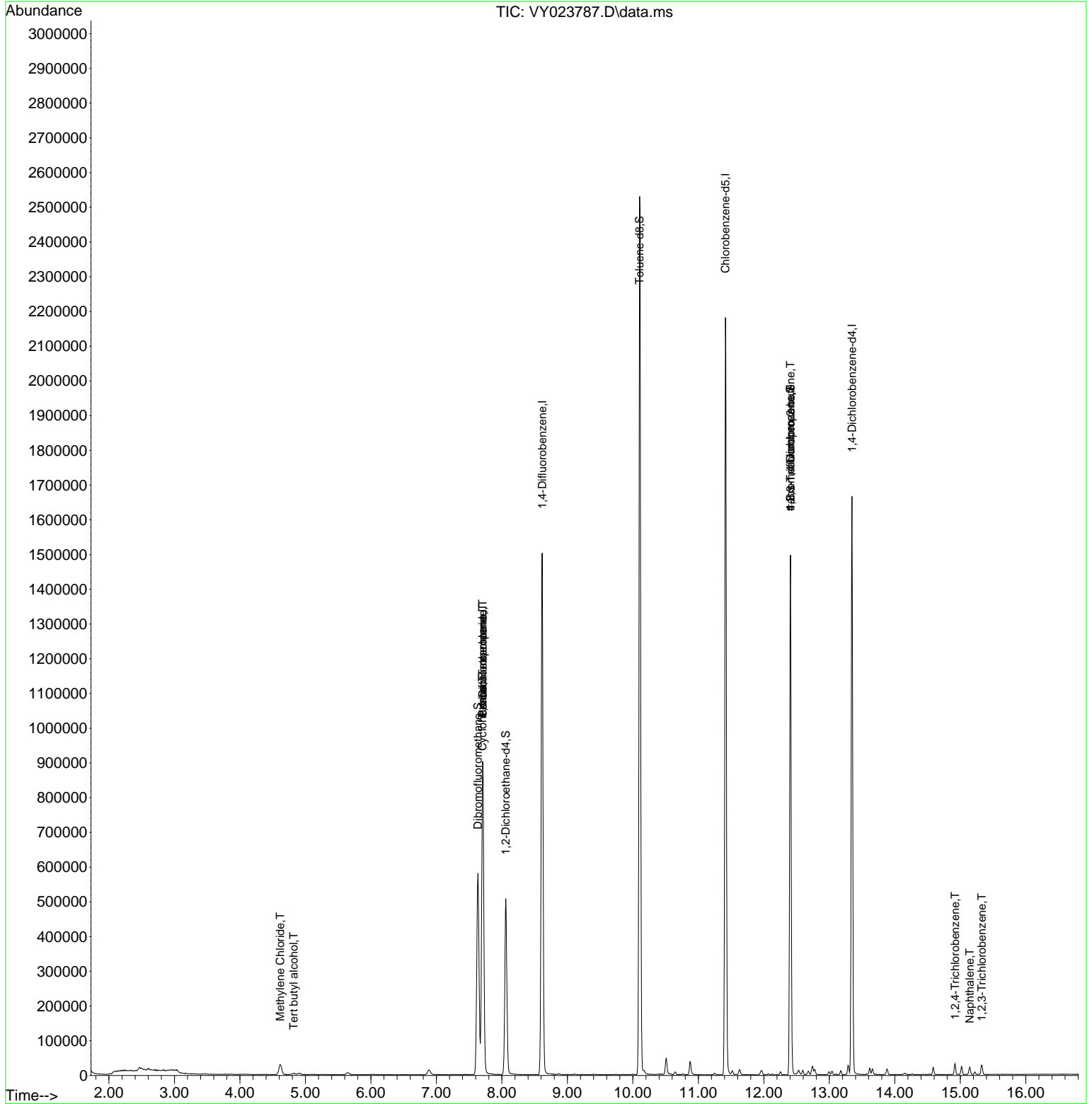
Internal Standards						
1) Pentafluorobenzene	7.707	168	716100	50.000	ug/l	0.00
34) 1,4-Difluorobenzene	8.615	114	1312352	50.000	ug/l	0.00
63) Chlorobenzene-d5	11.414	117	1254728	50.000	ug/l	0.00
72) 1,4-Dichlorobenzene-d4	13.346	152	423068	50.000	ug/l	0.00
System Monitoring Compounds						
33) 1,2-Dichloroethane-d4	8.061	65	380222	62.246	ug/l	0.00
Spiked Amount	50.000	Range	50 - 163	Recovery	=	124.500%
35) Dibromofluoromethane	7.634	113	423218	51.604	ug/l	0.00
Spiked Amount	50.000	Range	54 - 147	Recovery	=	103.200%
50) Toluene-d8	10.103	98	1659464	54.319	ug/l	0.00
Spiked Amount	50.000	Range	58 - 134	Recovery	=	108.640%
62) 4-Bromofluorobenzene	12.407	95	470956	47.669	ug/l	0.00
Spiked Amount	50.000	Range	30 - 143	Recovery	=	95.340%
Target Compounds						
					Qvalue	
11) Tert butyl alcohol	4.823	59	3563	9.046	ug/l #	79
20) Methylene Chloride	4.616	84	22282	3.040	ug/l	91
31) Cyclohexane	7.701	56	14020	1.393	ug/l #	1
36) 1,1-Dichloropropene	7.707	75	52803	4.818	ug/l #	47
38) Carbon Tetrachloride	7.707	117	68108	5.275	ug/l #	17
76) 1,2,3-Trichloropropane	12.407	75	220505	64.401	ug/l #	100
81) trans-1,4-Dichloro-2-b...	12.407	75	220505	145.542	ug/l #	14
93) 1,2,4-Trichlorobenzene	14.919	180	9547	1.341	ug/l	96
95) Naphthalene	15.145	128	18115	6.564	ug/l	99
96) 1,2,3-Trichlorobenzene	15.328	180	9086	1.527	ug/l	99

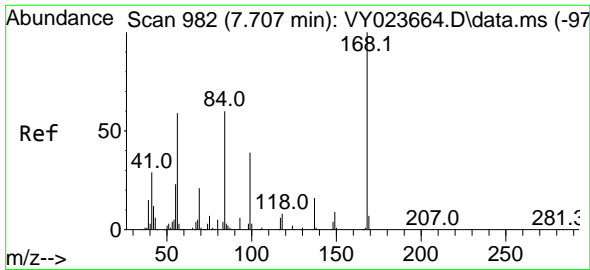
(#) = qualifier out of range (m) = manual integration (+) = signals summed

Data Path : Z:\voasrv\HPCHEM1\MSVOA_Y\Data\VY112425\
 Data File : VY023787.D
 Acq On : 24 Nov 2025 13:54
 Operator : SY/MD
 Sample : VY1124SBL01
 Misc : 5.00g/5.0mL/MSVOA_Y/SOIL
 ALS Vial : 3 Sample Multiplier: 1

Instrument :
 MSVOA_Y
 ClientSampleId :
 VY1124SBL01

Quant Time: Nov 26 02:09:44 2025
 Quant Method : Z:\voasrv\HPCHEM1\MSVOA_Y\methods\82Y110425S.M
 Quant Title : SW846 8260
 QLast Update : Wed Nov 05 04:41:50 2025
 Response via : Initial Calibration

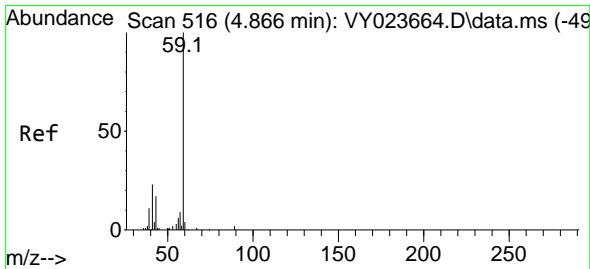
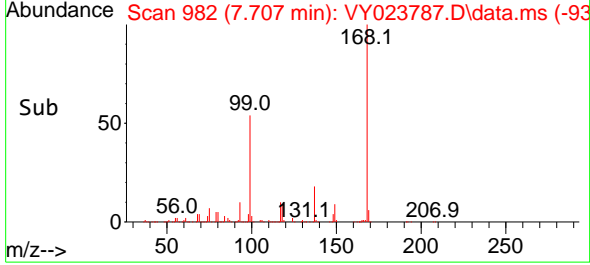
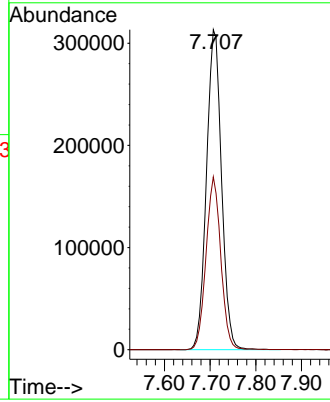
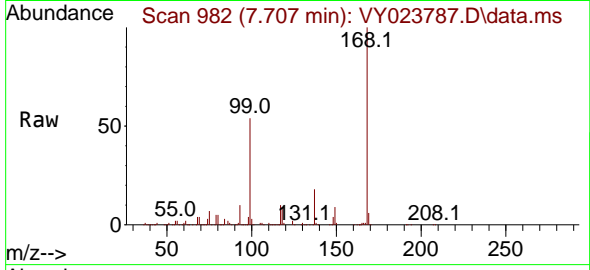




#1
 Pentafluorobenzene
 Concen: 50.000 ug/l
 RT: 7.707 min Scan# 91
 Delta R.T. 0.000 min
 Lab File: VY023787.D
 Acq: 24 Nov 2025 13:54

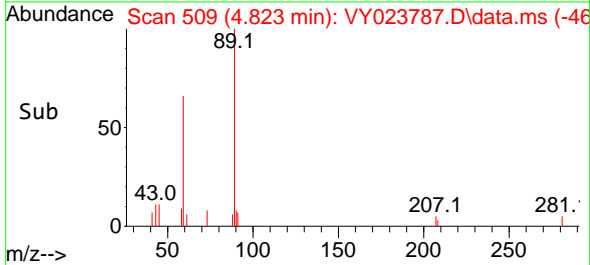
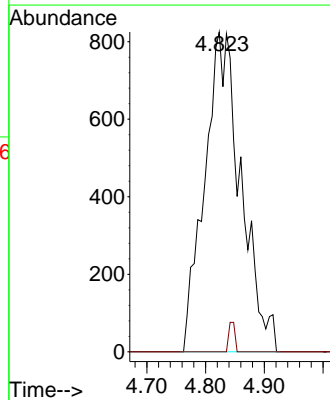
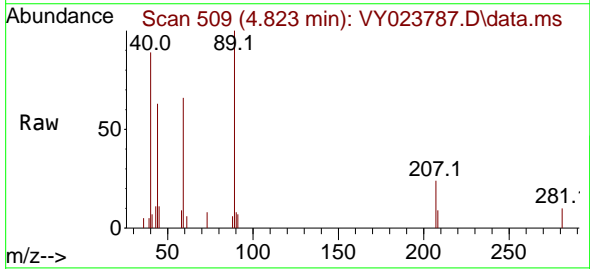
Instrument :
 MSVOA_Y
 ClientSampleId :
 VY1124SBL01

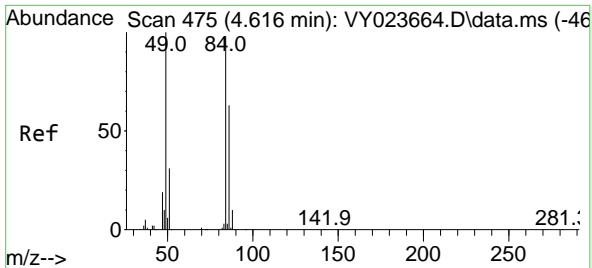
Tgt Ion:168 Resp: 716100
 Ion Ratio Lower Upper
 168 100
 99 54.0 41.0 61.4



#11
 Tert butyl alcohol
 Concen: 9.046 ug/l
 RT: 4.823 min Scan# 509
 Delta R.T. -0.043 min
 Lab File: VY023787.D
 Acq: 24 Nov 2025 13:54

Tgt Ion: 59 Resp: 3563
 Ion Ratio Lower Upper
 59 100
 57 1.6 7.4 11.2#



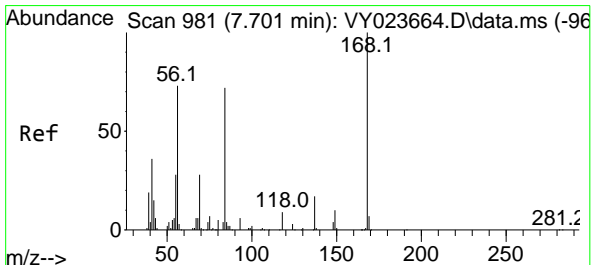
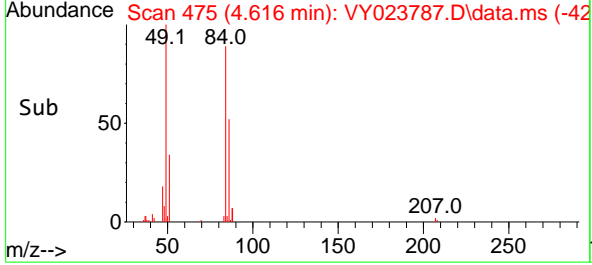
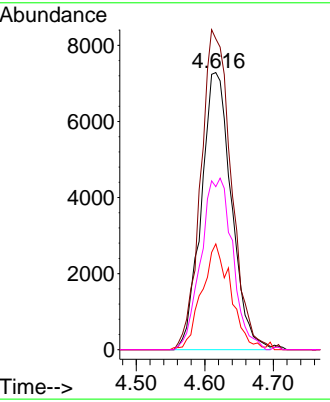
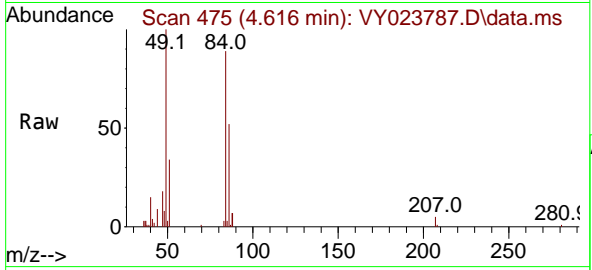


#20
 Methylene Chloride
 Concen: 3.040 ug/l
 RT: 4.616 min Scan# 41
 Delta R.T. -0.000 min
 Lab File: VY023787.D
 Acq: 24 Nov 2025 13:54

Instrument : MSVOA_Y
 ClientSampleId : VY1124SBL01

Tgt Ion: 84 Resp: 22282

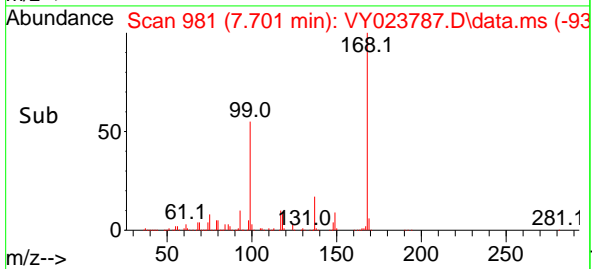
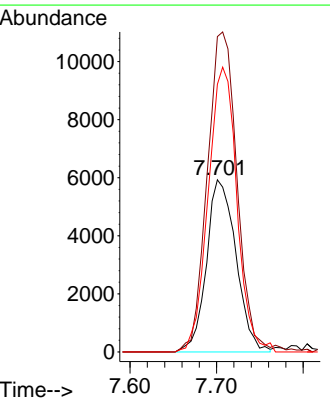
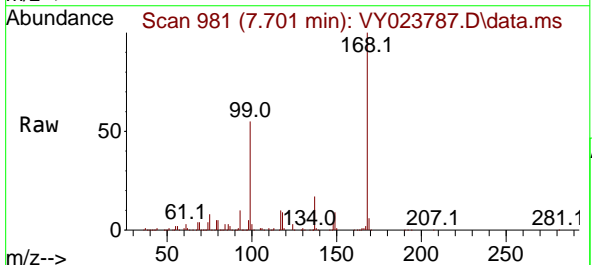
Ion	Ratio	Lower	Upper
84	100		
49	112.2	81.5	122.3
51	38.2	25.5	38.3
86	58.8	51.2	76.8

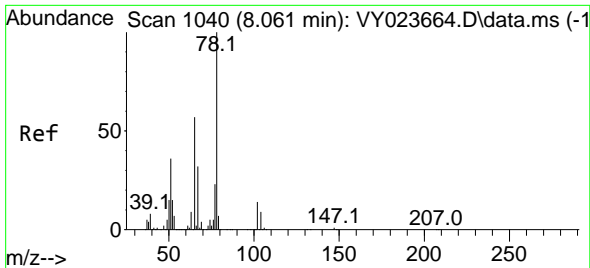


#31
 Cyclohexane
 Concen: 1.393 ug/l
 RT: 7.701 min Scan# 981
 Delta R.T. -0.000 min
 Lab File: VY023787.D
 Acq: 24 Nov 2025 13:54

Tgt Ion: 56 Resp: 14020

Ion	Ratio	Lower	Upper
56	100		
69	183.2	30.5	45.7#
84	155.5	79.0	118.4#

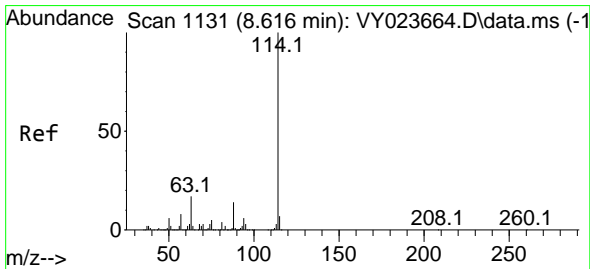
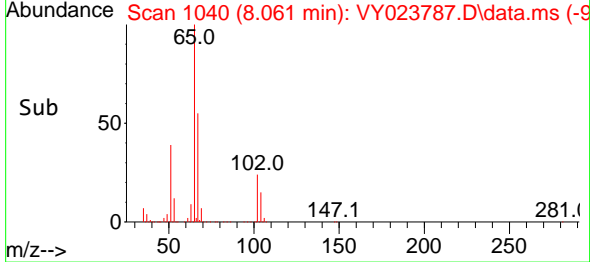
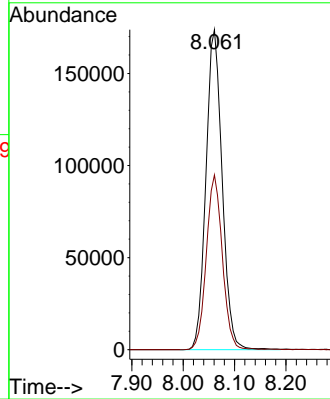
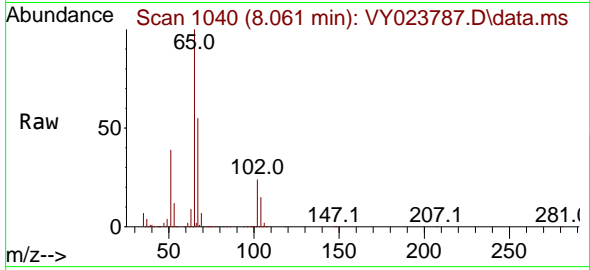




#33
 1,2-Dichloroethane-d4
 Concen: 62.246 ug/l
 RT: 8.061 min Scan# 1040
 Delta R.T. -0.000 min
 Lab File: VY023787.D
 Acq: 24 Nov 2025 13:54

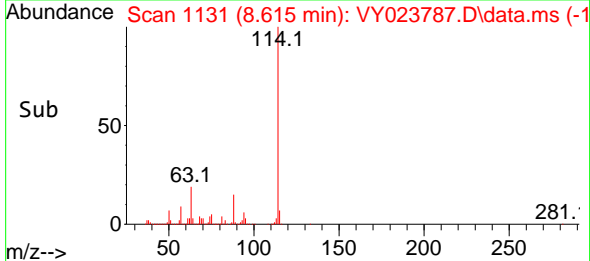
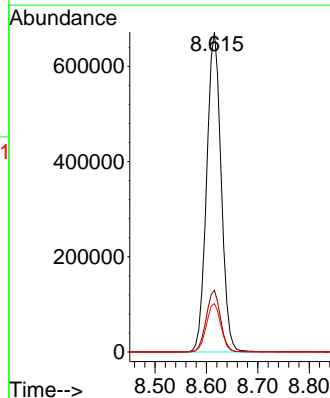
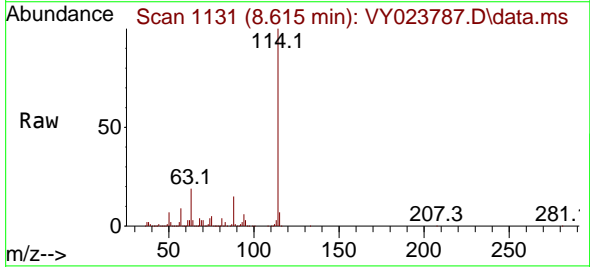
Instrument : MSVOA_Y
 ClientSampleId : VY1124SBL01

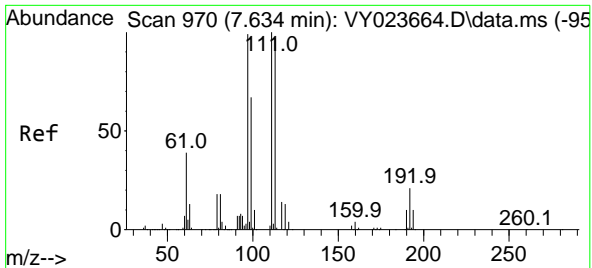
Tgt Ion: 65 Resp: 380222
 Ion Ratio Lower Upper
 65 100
 67 53.9 0.0 107.4



#34
 1,4-Difluorobenzene
 Concen: 50.000 ug/l
 RT: 8.615 min Scan# 1131
 Delta R.T. -0.000 min
 Lab File: VY023787.D
 Acq: 24 Nov 2025 13:54

Tgt Ion:114 Resp: 1312352
 Ion Ratio Lower Upper
 114 100
 63 19.3 0.0 33.8
 88 15.1 0.0 29.0



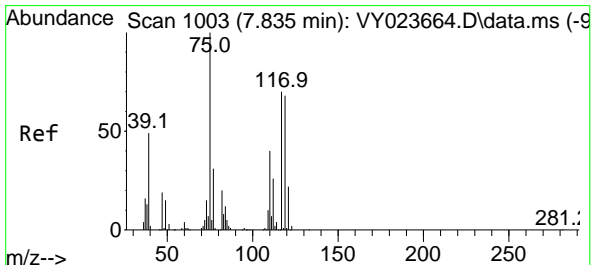
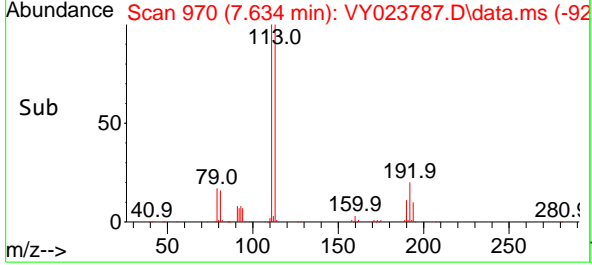
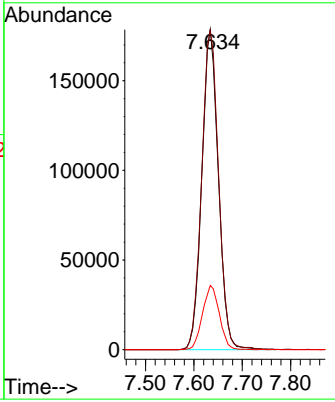
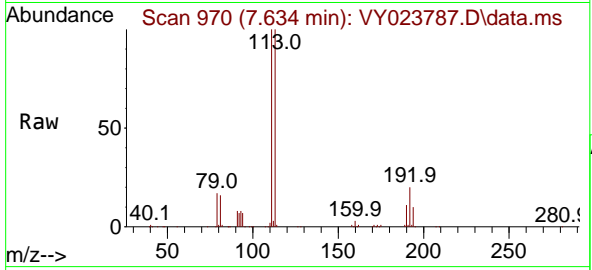


#35
 Dibromofluoromethane
 Concen: 51.604 ug/l
 RT: 7.634 min Scan# 91
 Delta R.T. -0.000 min
 Lab File: VY023787.D
 Acq: 24 Nov 2025 13:54

Instrument : MSVOA_Y
 ClientSampleId : VY1124SBL01

Tgt Ion:113 Resp: 423218

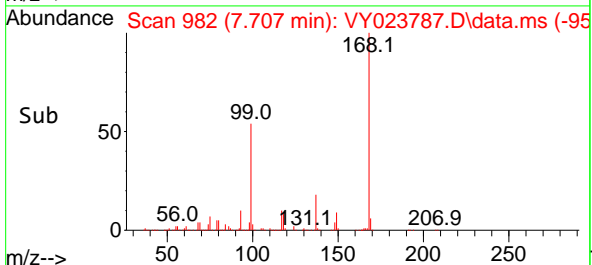
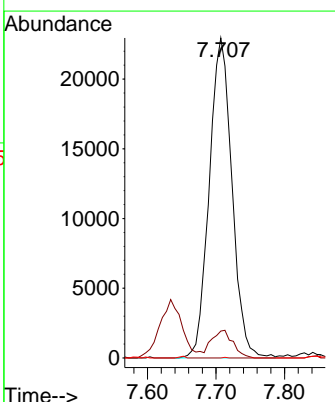
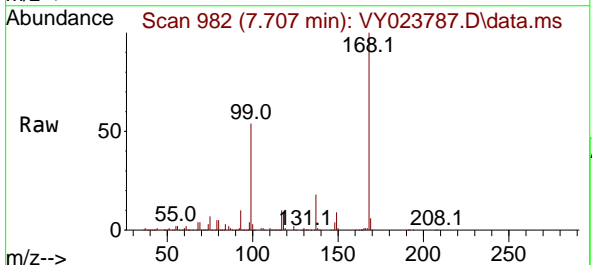
Ion	Ratio	Lower	Upper
113	100		
111	102.4	82.2	123.4
192	20.4	17.3	25.9

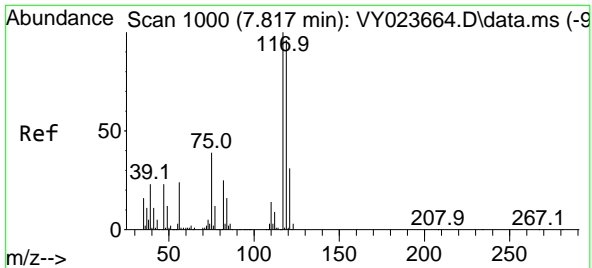


#36
 1,1-Dichloropropene
 Concen: 4.818 ug/l
 RT: 7.707 min Scan# 982
 Delta R.T. -0.128 min
 Lab File: VY023787.D
 Acq: 24 Nov 2025 13:54

Tgt Ion: 75 Resp: 52803

Ion	Ratio	Lower	Upper
75	100		
110	8.6	19.7	59.0#
77	0.0	25.2	37.8#

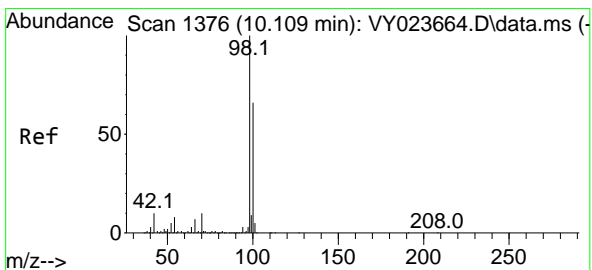
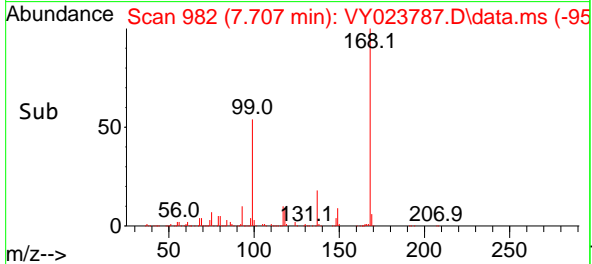
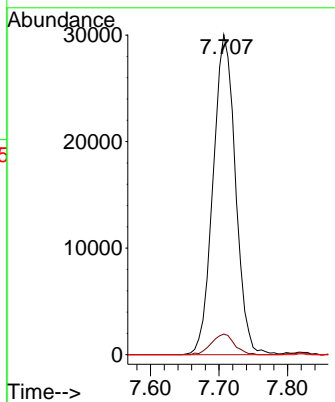
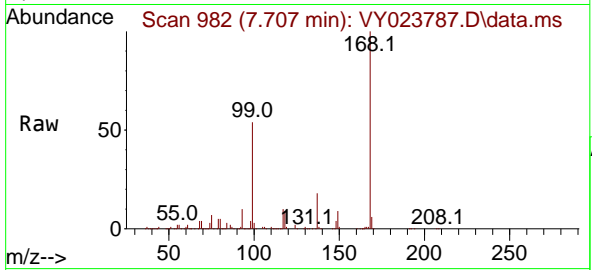




#38
 Carbon Tetrachloride
 Concen: 5.275 ug/l
 RT: 7.707 min Scan# 91
 Delta R.T. -0.110 min
 Lab File: VY023787.D
 Acq: 24 Nov 2025 13:54

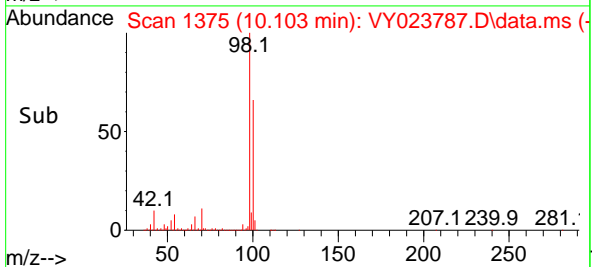
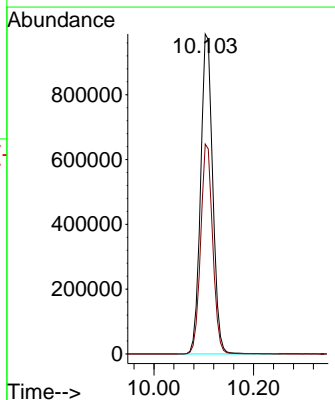
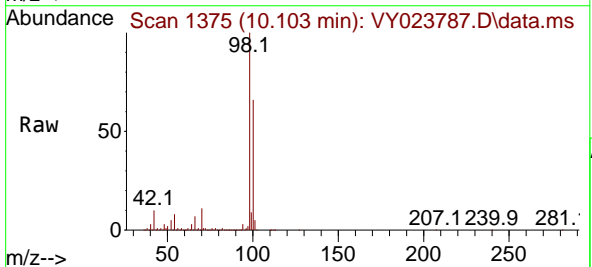
Instrument : MSVOA_Y
 ClientSampleId : VY1124SBL01

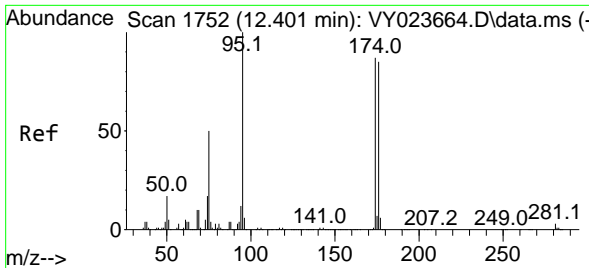
Tgt Ion:117 Resp: 68108
 Ion Ratio Lower Upper
 117 100
 119 6.4 76.3 114.5#
 121 0.0 24.8 37.2#



#50
 Toluene-d8
 Concen: 54.319 ug/l
 RT: 10.103 min Scan# 1375
 Delta R.T. -0.006 min
 Lab File: VY023787.D
 Acq: 24 Nov 2025 13:54

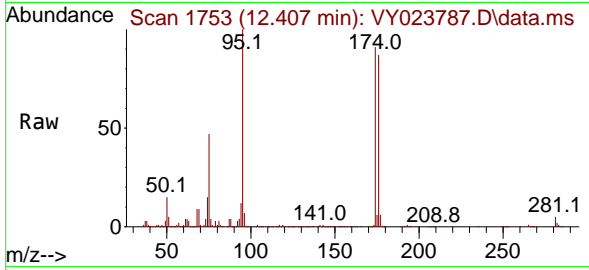
Tgt Ion: 98 Resp: 1659464
 Ion Ratio Lower Upper
 98 100
 100 65.2 52.7 79.1





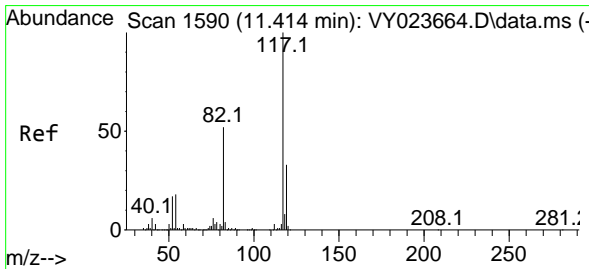
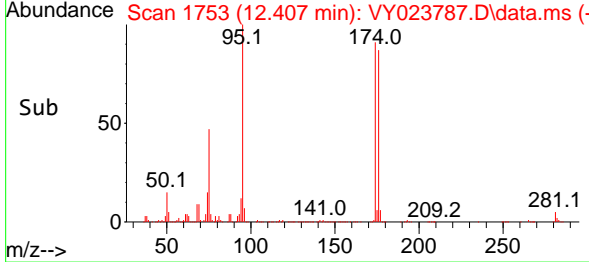
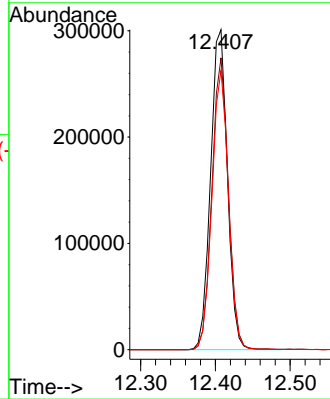
#62
 4-Bromofluorobenzene
 Concen: 47.669 ug/l
 RT: 12.407 min Scan# 1753
 Delta R.T. 0.006 min
 Lab File: VY023787.D
 Acq: 24 Nov 2025 13:54

Instrument : MSVOA_Y
 ClientSampleId : VY1124SBL01



Tgt Ion: 95 Resp: 470956

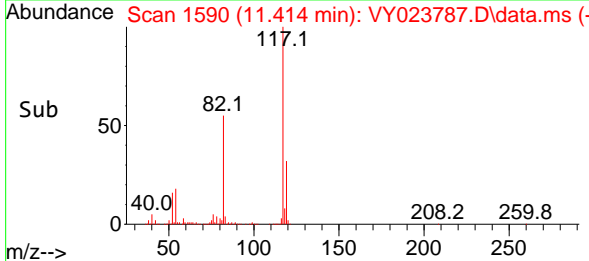
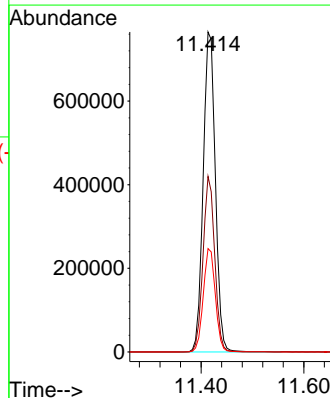
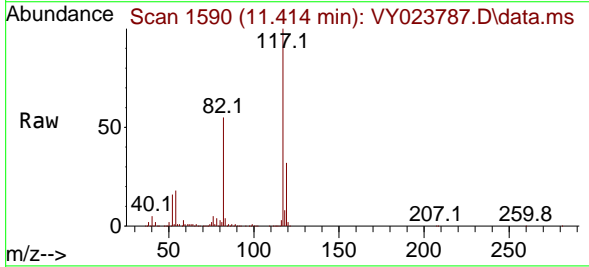
Ion	Ratio	Lower	Upper
95	100		
174	89.6	0.0	184.8
176	85.8	0.0	181.6

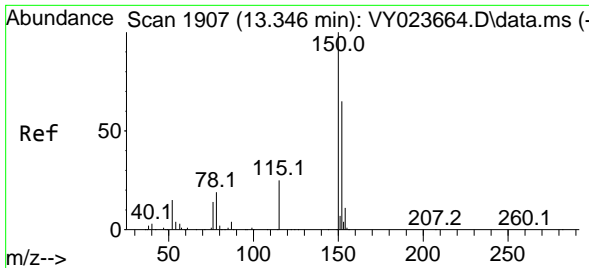


#63
 Chlorobenzene-d5
 Concen: 50.000 ug/l
 RT: 11.414 min Scan# 1590
 Delta R.T. -0.000 min
 Lab File: VY023787.D
 Acq: 24 Nov 2025 13:54

Tgt Ion: 117 Resp: 1254728

Ion	Ratio	Lower	Upper
117	100		
82	54.8	41.2	61.8
119	32.3	26.2	39.2



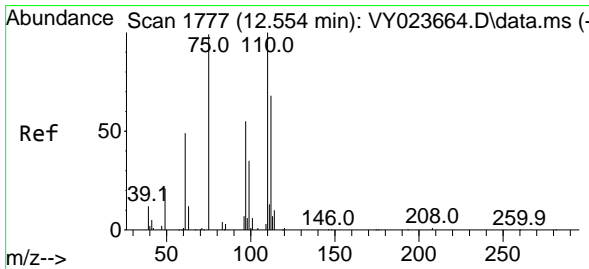
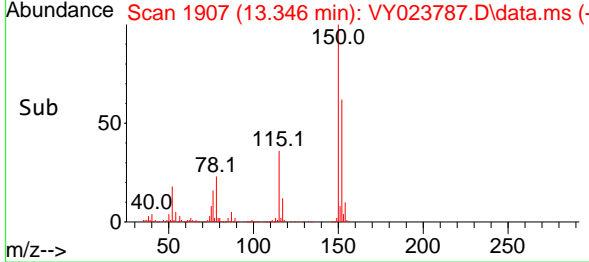
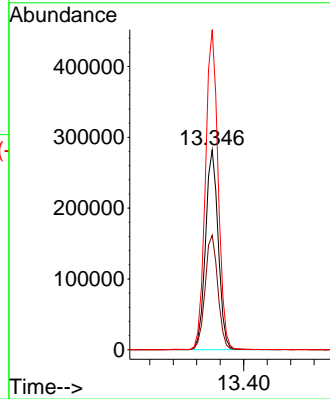
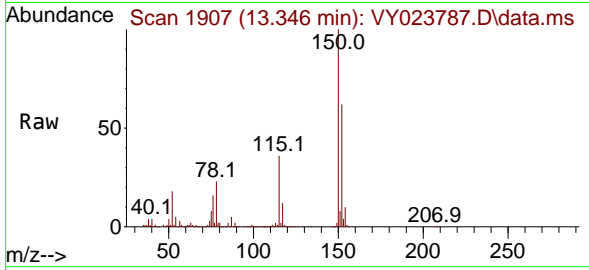


#72
 1,4-Dichlorobenzene-d4
 Concen: 50.000 ug/l
 RT: 13.346 min Scan# 1907
 Delta R.T. -0.000 min
 Lab File: VY023787.D
 Acq: 24 Nov 2025 13:54

Instrument : MSVOA_Y
 ClientSampleId : VY1124SBL01

Tgt Ion:152 Resp: 423068

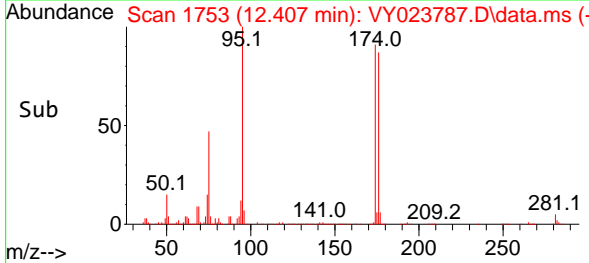
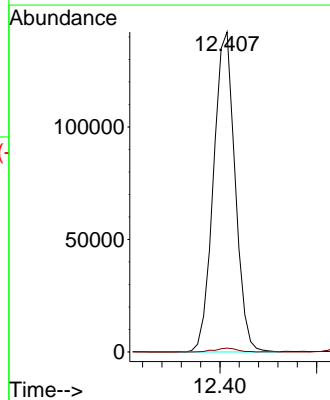
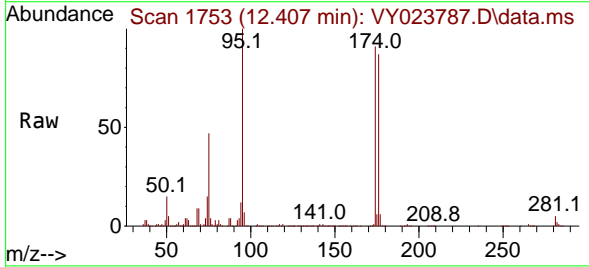
Ion	Ratio	Lower	Upper
152	100		
115	57.7	27.5	82.5
150	159.7	0.0	349.0

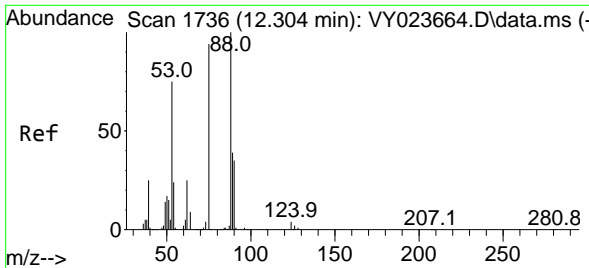


#76
 1,2,3-Trichloropropane
 Concen: 64.401 ug/l
 RT: 12.407 min Scan# 1753
 Delta R.T. -0.147 min
 Lab File: VY023787.D
 Acq: 24 Nov 2025 13:54

Tgt Ion: 75 Resp: 220505

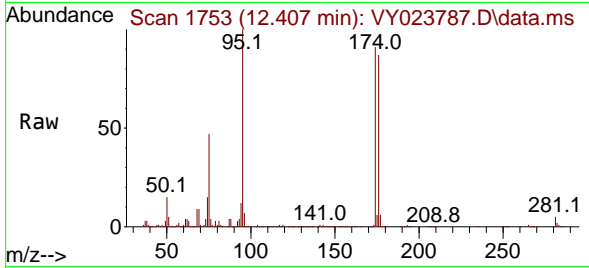
Ion	Ratio	Lower	Upper
75	100		
77	1.3	0.0	0.0#



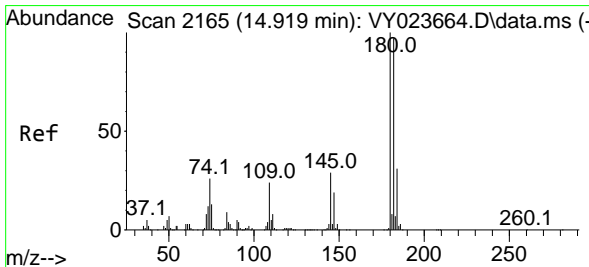
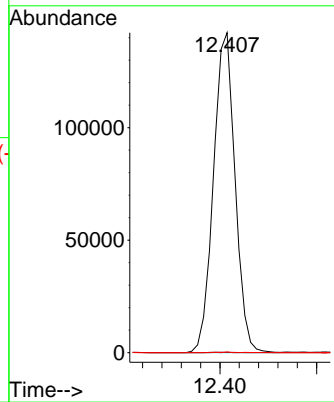
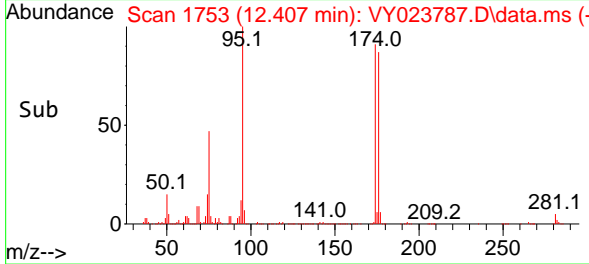


#81
 trans-1,4-Dichloro-2-butene
 Concen: 145.542 ug/l
 RT: 12.407 min Scan# 1753
 Delta R.T. 0.103 min
 Lab File: VY023787.D
 Acq: 24 Nov 2025 13:54

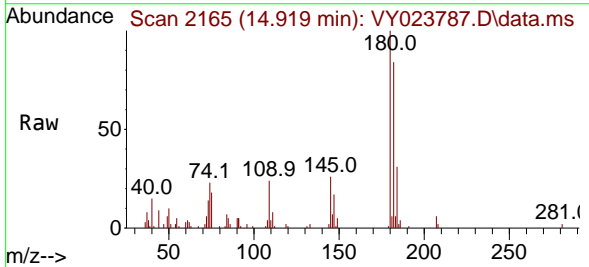
Instrument : MSVOA_Y
 ClientSampleId : VY1124SBL01



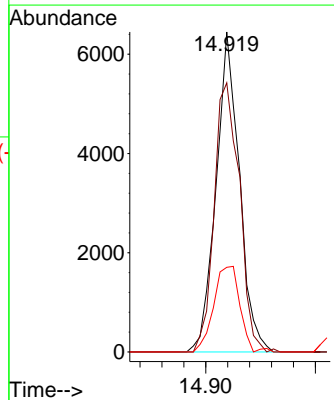
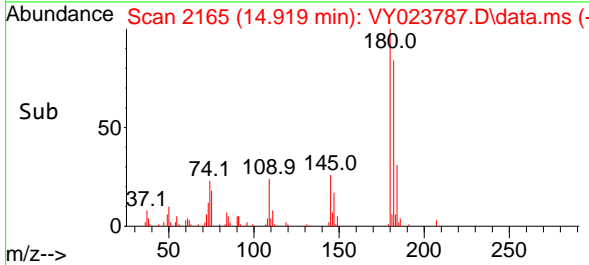
Tgt Ion: 75 Resp: 220505
 Ion Ratio Lower Upper
 75 100
 53 0.1 69.6 104.4#
 89 0.1 38.2 57.4#

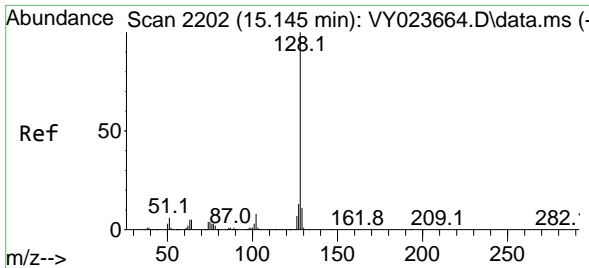


#93
 1,2,4-Trichlorobenzene
 Concen: 1.341 ug/l
 RT: 14.919 min Scan# 2165
 Delta R.T. -0.000 min
 Lab File: VY023787.D
 Acq: 24 Nov 2025 13:54



Tgt Ion:180 Resp: 9547
 Ion Ratio Lower Upper
 180 100
 182 91.0 47.5 142.6
 145 30.1 14.4 43.4

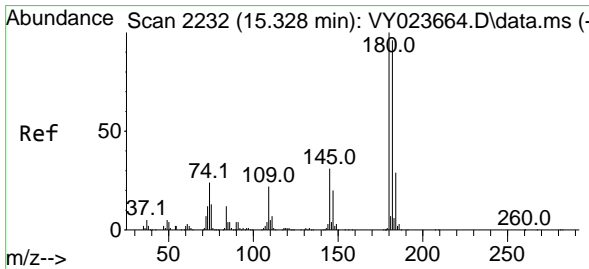
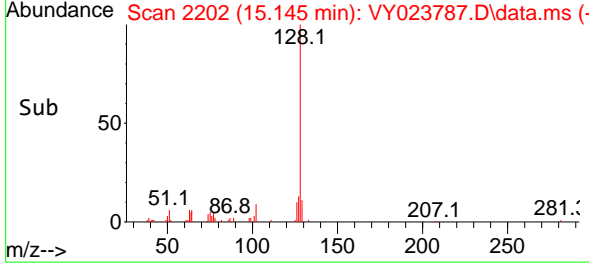
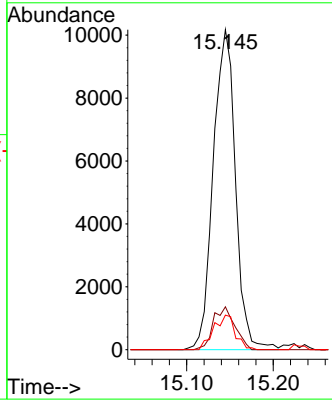
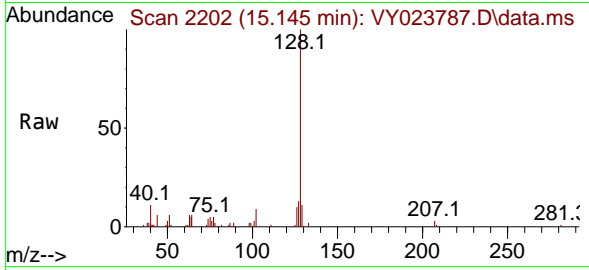




#95
 Naphthalene
 Concen: 6.564 ug/l
 RT: 15.145 min Scan# 2115
 Delta R.T. -0.000 min
 Lab File: VY023787.D
 Acq: 24 Nov 2025 13:54

Instrument : MSVOA_Y
 ClientSampleId : VY1124SBL01

Tgt Ion	Resp	Lower	Upper
128	18115		
127	13.1	10.5	15.7
129	10.5	8.8	13.2



#96
 1,2,3-Trichlorobenzene
 Concen: 1.527 ug/l
 RT: 15.328 min Scan# 2232
 Delta R.T. -0.000 min
 Lab File: VY023787.D
 Acq: 24 Nov 2025 13:54

Tgt Ion	Resp	Lower	Upper
180	9086		
182	94.6	47.5	142.6
145	30.6	15.5	46.5

