

Data Path : Z:\voasrv\HPCHEM1\MSVOA_Y\Data\VY112425\
 Data File : VY023790.D
 Acq On : 24 Nov 2025 15:11
 Operator : SY/MD
 Sample : Q3710-01
 Misc : 5.23g/5.0mL/MSVOA_Y/SOIL/A
 ALS Vial : 6 Sample Multiplier: 1

Instrument :
 MSVOA_Y
 ClientSampleId :
 RBR200028-RT5376-COMP

Quant Time: Nov 26 02:12:03 2025
 Quant Method : Z:\voasrv\HPCHEM1\MSVOA_Y\methods\82Y110425S.M
 Quant Title : SW846 8260
 QLast Update : Wed Nov 05 04:41:50 2025
 Response via : Initial Calibration

Compound	R.T.	QIon	Response	Conc	Units	Dev(Min)

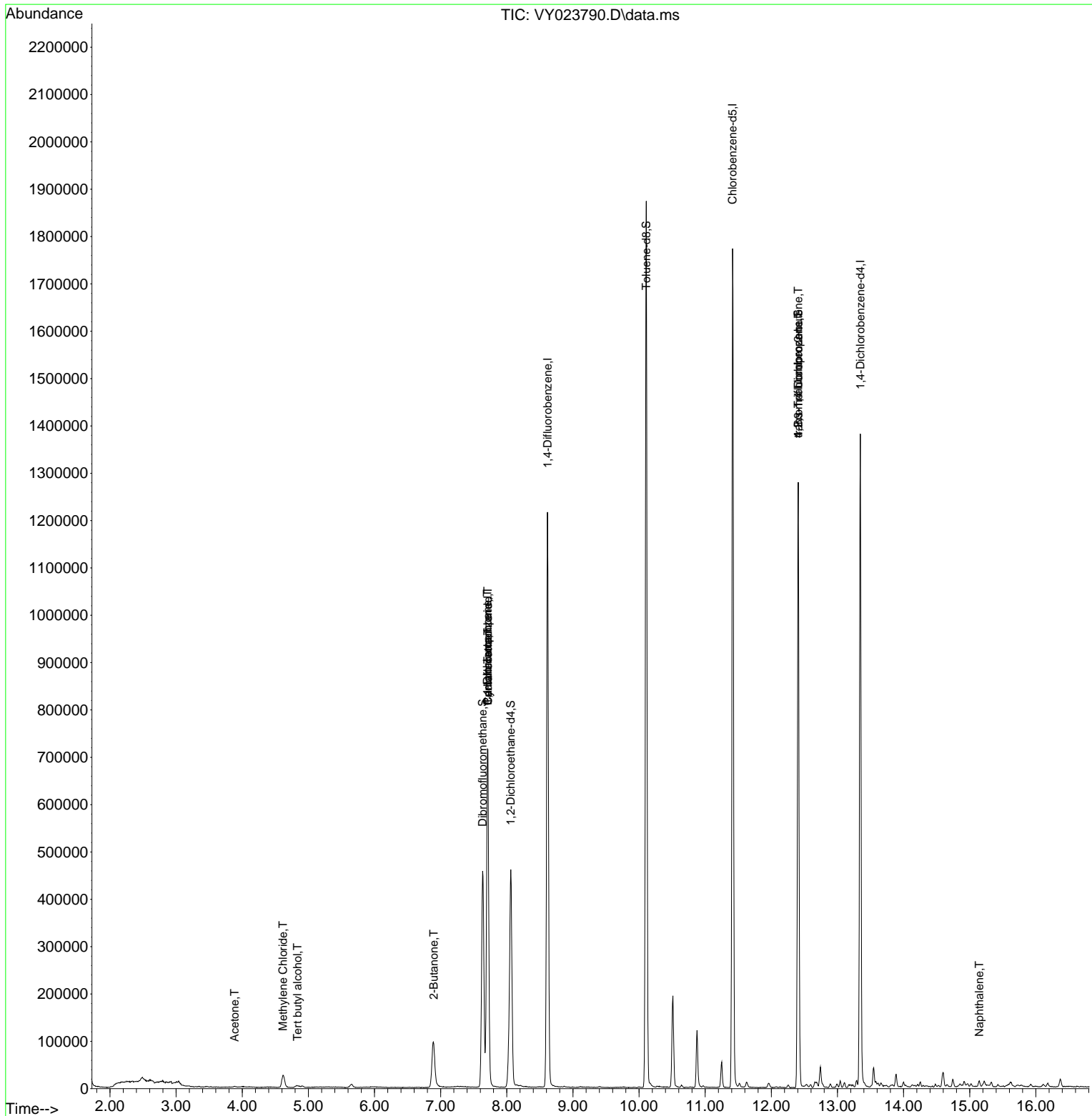
Internal Standards						
1) Pentafluorobenzene	7.713	168	574633	50.000	ug/l	0.00
34) 1,4-Difluorobenzene	8.616	114	1040572	50.000	ug/l	0.00
63) Chlorobenzene-d5	11.414	117	993648	50.000	ug/l	0.00
72) 1,4-Dichlorobenzene-d4	13.346	152	372942	50.000	ug/l	0.00
System Monitoring Compounds						
33) 1,2-Dichloroethane-d4	8.061	65	311032	63.454	ug/l	0.00
Spiked Amount	50.000	Range	50 - 163	Recovery	=	126.900%
35) Dibromofluoromethane	7.634	113	338467	52.049	ug/l	0.00
Spiked Amount	50.000	Range	54 - 147	Recovery	=	104.100%
50) Toluene-d8	10.109	98	1228034	50.696	ug/l	0.00
Spiked Amount	50.000	Range	58 - 134	Recovery	=	101.400%
62) 4-Bromofluorobenzene	12.408	95	383856	49.000	ug/l	0.00
Spiked Amount	50.000	Range	30 - 143	Recovery	=	98.000%
Target Compounds						
					Qvalue	
11) Tert butyl alcohol	4.836	59	4868	15.402	ug/l #	74
16) Acetone	3.885	43	2161	1.774	ug/l #	82
20) Methylene Chloride	4.616	84	19747	3.357	ug/l	95
25) 2-Butanone	6.896	43	5522	3.920	ug/l #	70
31) Cyclohexane	7.713	56	11147	1.380	ug/l #	1
36) 1,1-Dichloropropene	7.707	75	43058	4.955	ug/l #	47
38) Carbon Tetrachloride	7.713	117	56482	5.517	ug/l #	17
76) 1,2,3-Trichloropropane	12.408	75	185964	61.613	ug/l #	100
81) trans-1,4-Dichloro-2-b...	12.408	75	185964	139.242	ug/l #	14
95) Naphthalene	15.145	128	9722	6.055	ug/l	97

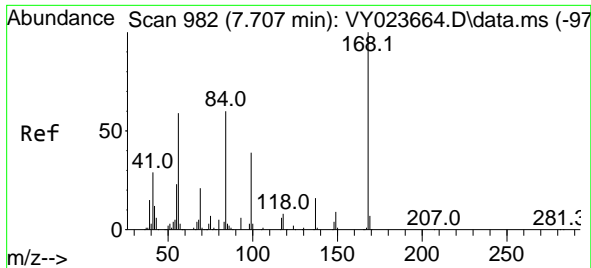
(#) = qualifier out of range (m) = manual integration (+) = signals summed

Data Path : Z:\voasrv\HPCHEM1\MSVOA_Y\Data\VY112425\
 Data File : VY023790.D
 Acq On : 24 Nov 2025 15:11
 Operator : SY/MD
 Sample : Q3710-01
 Misc : 5.23g/5.0mL/MSVOA_Y/SOIL/A
 ALS Vial : 6 Sample Multiplier: 1

Instrument :
 MSVOA_Y
 ClientSampleId :
 RBR200028-RT5376-COMP

Quant Time: Nov 26 02:12:03 2025
 Quant Method : Z:\voasrv\HPCHEM1\MSVOA_Y\methods\82Y110425S.M
 Quant Title : SW846 8260
 QLast Update : Wed Nov 05 04:41:50 2025
 Response via : Initial Calibration

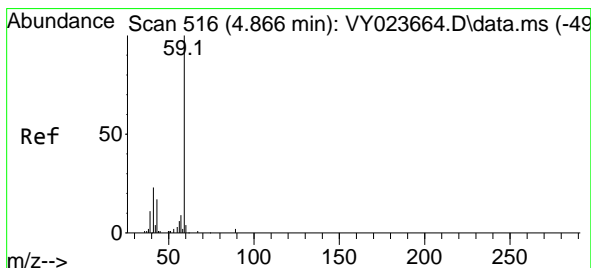
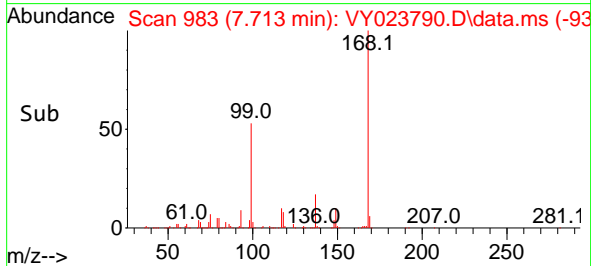
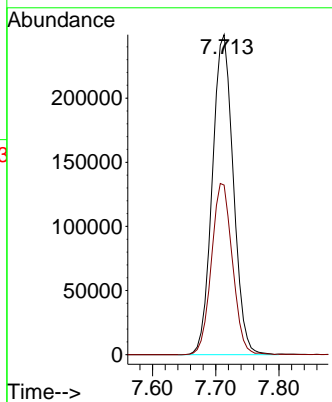
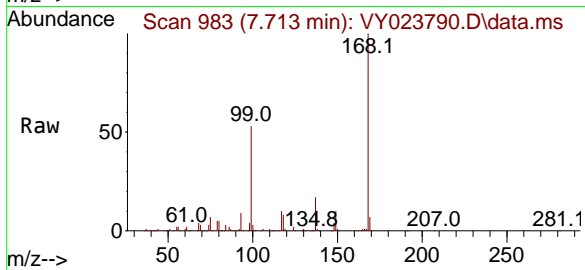




#1
 Pentafluorobenzene
 Concen: 50.000 ug/l
 RT: 7.713 min Scan# 99
 Delta R.T. 0.006 min
 Lab File: VY023790.D
 Acq: 24 Nov 2025 15:11

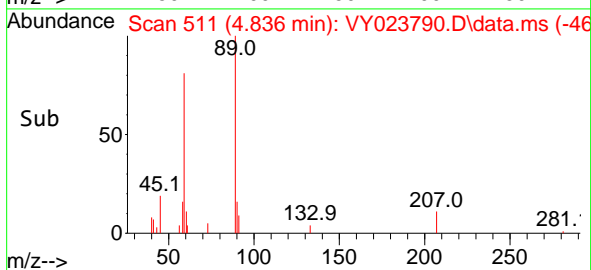
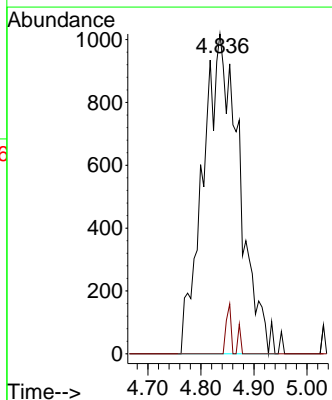
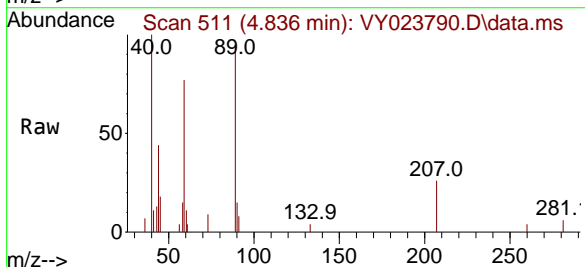
Instrument : MSVOA_Y
 ClientSampleId : RBR200028-RT5376-COMP

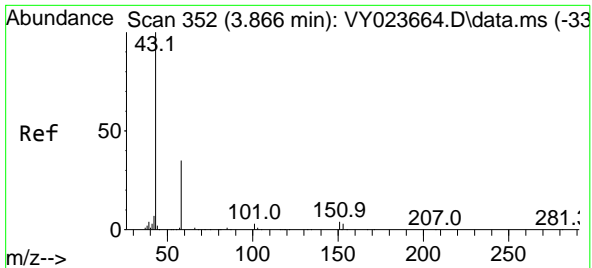
Tgt Ion:168 Resp: 574633
 Ion Ratio Lower Upper
 168 100
 99 53.0 41.0 61.4



#11
 Tert butyl alcohol
 Concen: 15.402 ug/l
 RT: 4.836 min Scan# 511
 Delta R.T. -0.030 min
 Lab File: VY023790.D
 Acq: 24 Nov 2025 15:11

Tgt Ion: 59 Resp: 4868
 Ion Ratio Lower Upper
 59 100
 57 0.0 7.4 11.2#

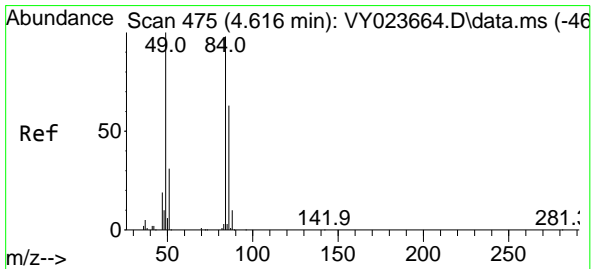
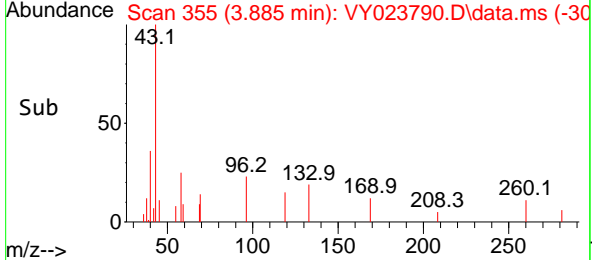
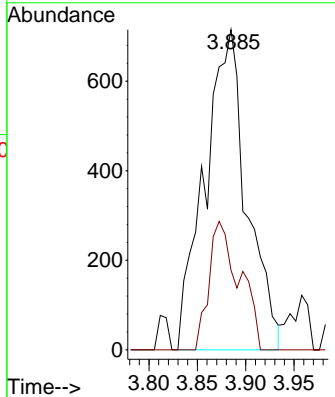
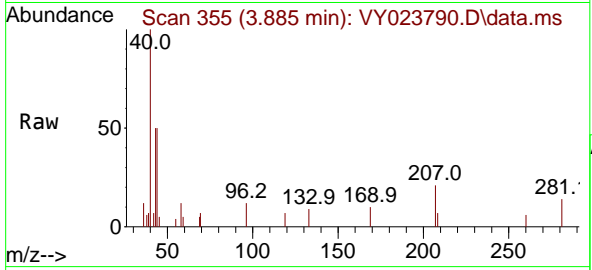




#16
 Acetone
 Concen: 1.774 ug/l
 RT: 3.885 min Scan# 31
 Delta R.T. 0.018 min
 Lab File: VY023790.D
 Acq: 24 Nov 2025 15:11

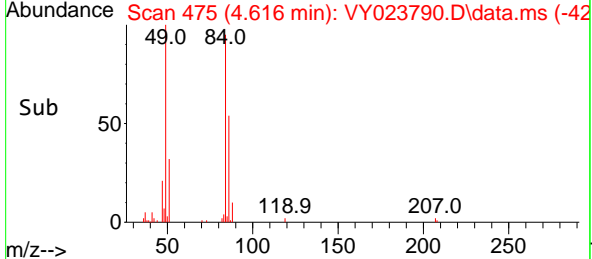
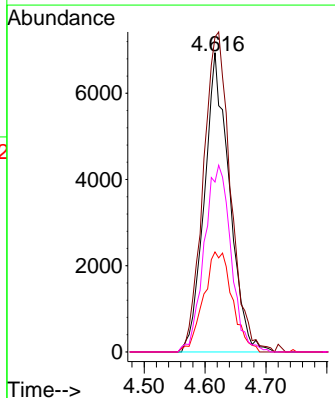
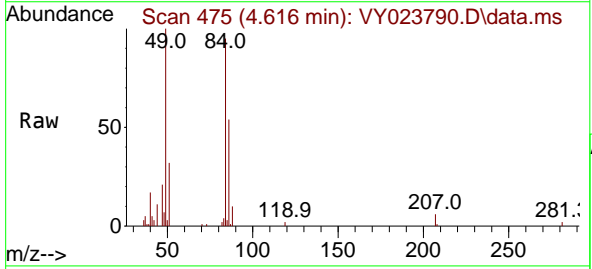
Instrument : MSVOA_Y
 ClientSampleId : RBR200028-RT5376-COMP

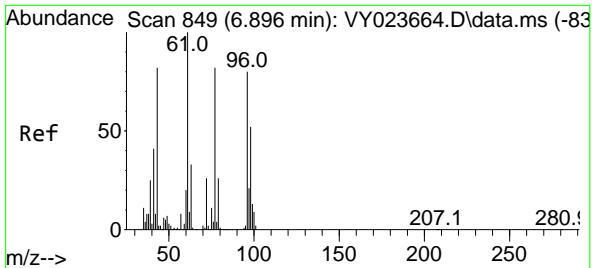
Tgt Ion: 43 Resp: 2161
 Ion Ratio Lower Upper
 43 100
 58 24.9 28.2 42.4#



#20
 Methylene Chloride
 Concen: 3.357 ug/l
 RT: 4.616 min Scan# 475
 Delta R.T. 0.000 min
 Lab File: VY023790.D
 Acq: 24 Nov 2025 15:11

Tgt Ion: 84 Resp: 19747
 Ion Ratio Lower Upper
 84 100
 49 105.2 81.5 122.3
 51 33.4 25.5 38.3
 86 56.8 51.2 76.8

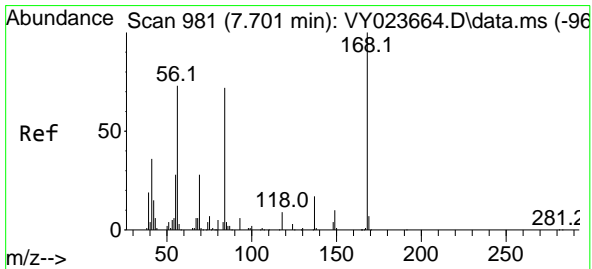
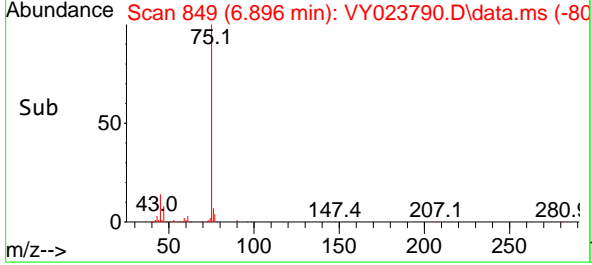
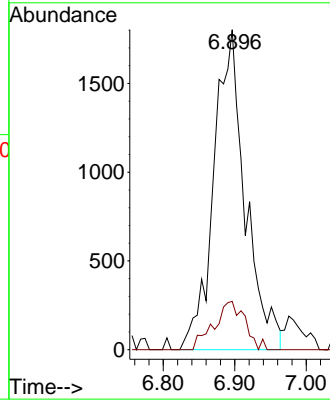
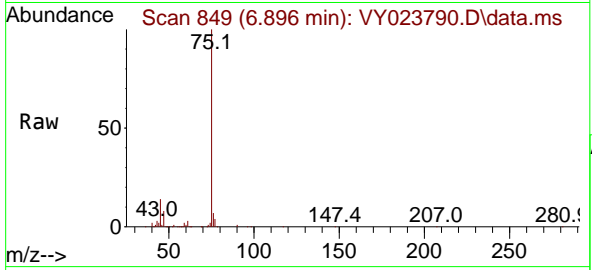




#25
 2-Butanone
 Concen: 3.920 ug/l
 RT: 6.896 min Scan# 849
 Delta R.T. 0.000 min
 Lab File: VY023790.D
 Acq: 24 Nov 2025 15:11

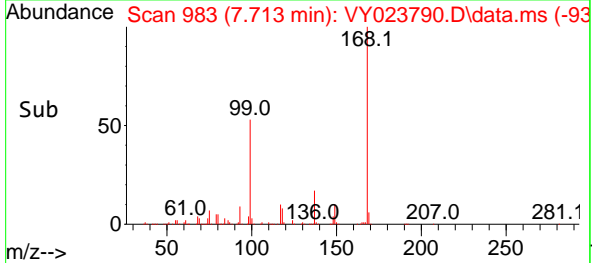
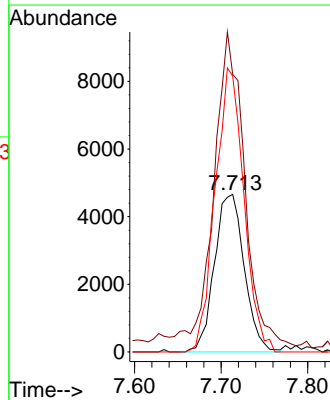
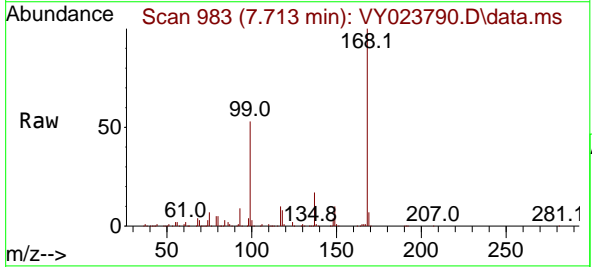
Instrument : MSVOA_Y
 ClientSampleId : RBR200028-RT5376-COMP

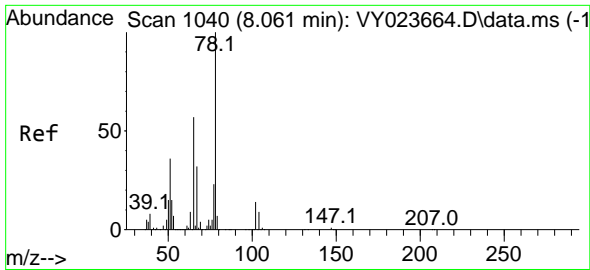
Tgt Ion: 43 Resp: 5522
 Ion Ratio Lower Upper
 43 100
 72 15.1 25.7 38.5#



#31
 Cyclohexane
 Concen: 1.380 ug/l
 RT: 7.713 min Scan# 983
 Delta R.T. 0.012 min
 Lab File: VY023790.D
 Acq: 24 Nov 2025 15:11

Tgt Ion: 56 Resp: 11147
 Ion Ratio Lower Upper
 56 100
 69 168.5 30.5 45.7#
 84 175.1 79.0 118.4#

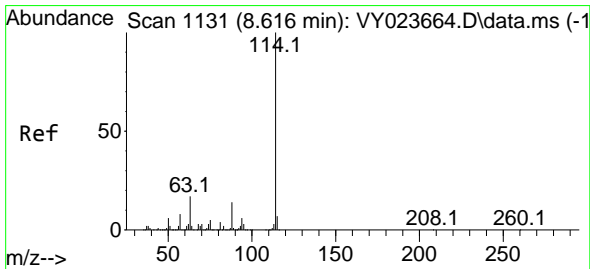
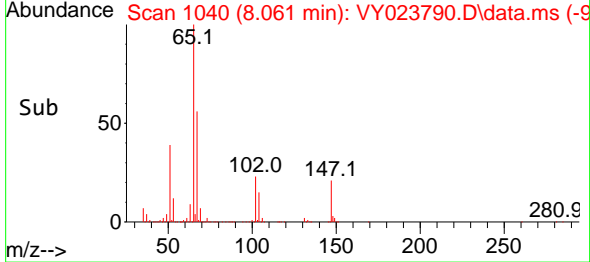
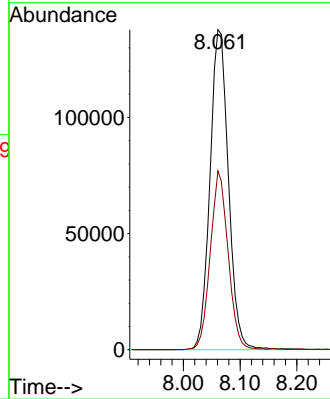
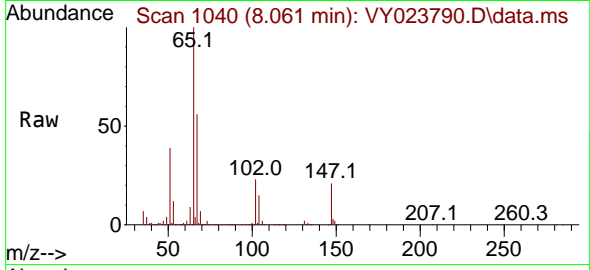




#33
 1,2-Dichloroethane-d4
 Concen: 63.454 ug/l
 RT: 8.061 min Scan# 1040
 Delta R.T. 0.000 min
 Lab File: VY023790.D
 Acq: 24 Nov 2025 15:11

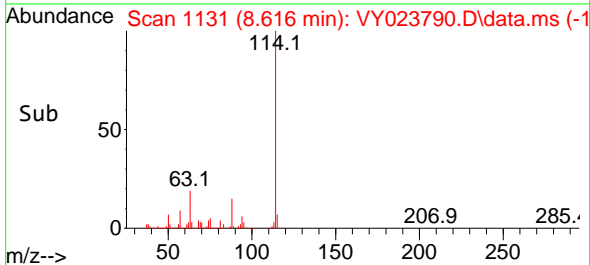
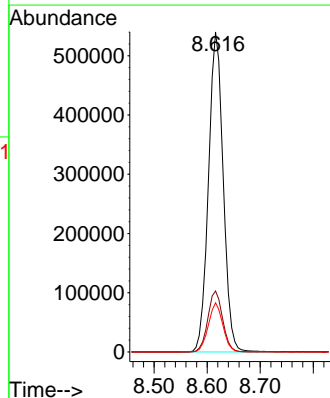
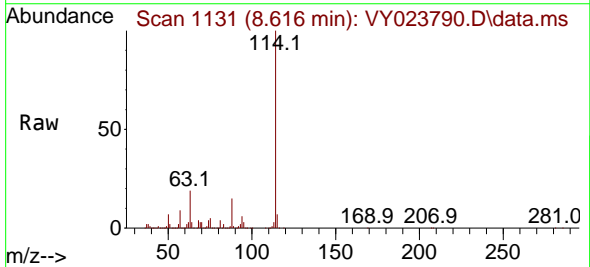
Instrument : MSVOA_Y
 ClientSampleId : RBR200028-RT5376-COMP

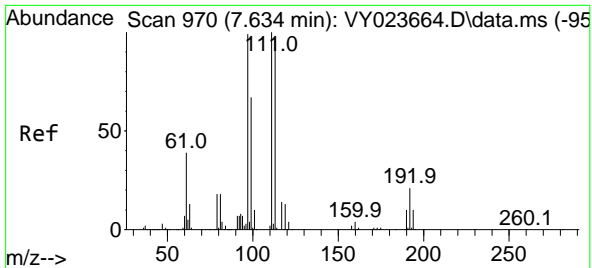
Tgt Ion: 65 Resp: 311032
 Ion Ratio Lower Upper
 65 100
 67 54.1 0.0 107.4



#34
 1,4-Difluorobenzene
 Concen: 50.000 ug/l
 RT: 8.616 min Scan# 1131
 Delta R.T. 0.000 min
 Lab File: VY023790.D
 Acq: 24 Nov 2025 15:11

Tgt Ion: 114 Resp: 1040572
 Ion Ratio Lower Upper
 114 100
 63 19.0 0.0 33.8
 88 15.4 0.0 29.0

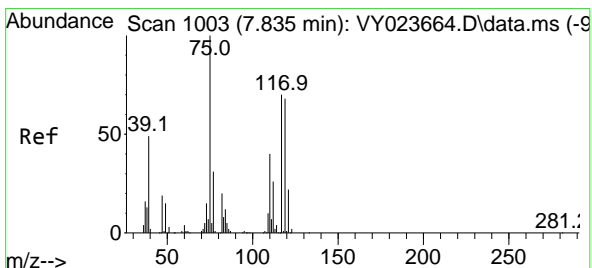
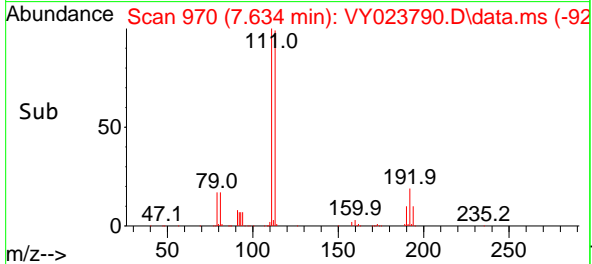
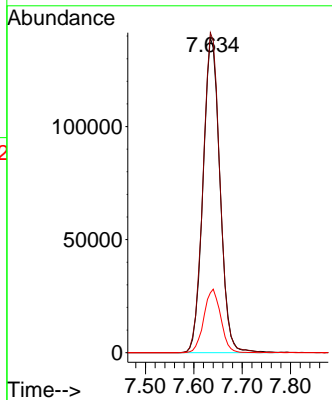
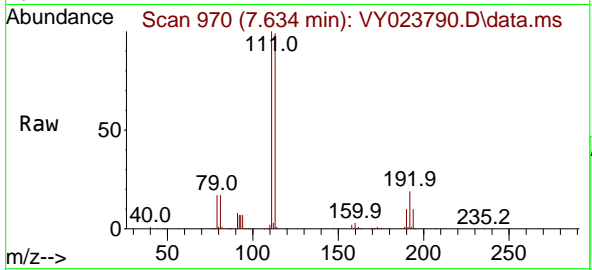




#35
 Dibromofluoromethane
 Concen: 52.049 ug/l
 RT: 7.634 min Scan# 91
 Delta R.T. 0.000 min
 Lab File: VY023790.D
 Acq: 24 Nov 2025 15:11

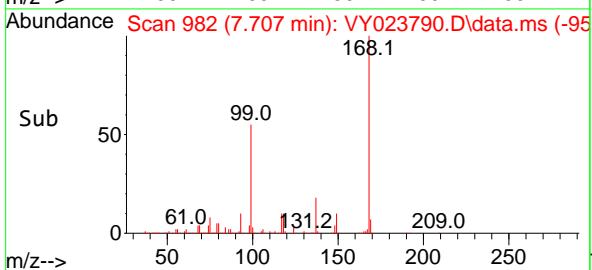
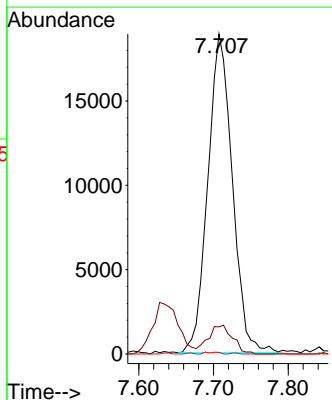
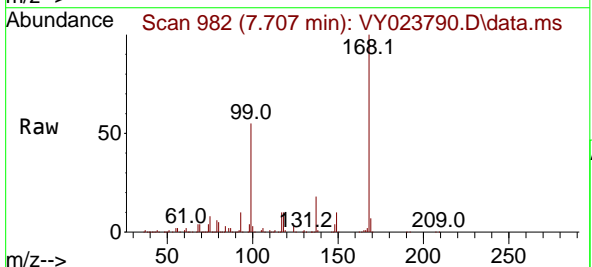
Instrument : MSVOA_Y
 ClientSampleId : RBR200028-RT5376-COMP

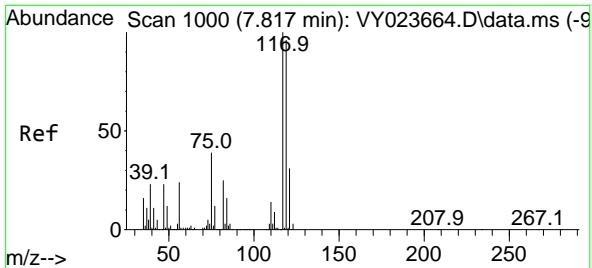
Tgt Ion	Resp	Lower	Upper
113	100		
111	101.6	82.2	123.4
192	20.1	17.3	25.9



#36
 1,1-Dichloropropene
 Concen: 4.955 ug/l
 RT: 7.707 min Scan# 982
 Delta R.T. -0.128 min
 Lab File: VY023790.D
 Acq: 24 Nov 2025 15:11

Tgt Ion	Resp	Lower	Upper
75	100		
110	9.0	19.7	59.0#
77	0.1	25.2	37.8#



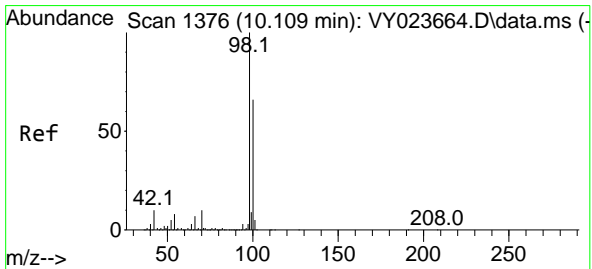
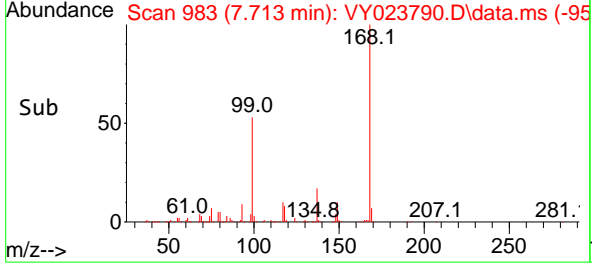
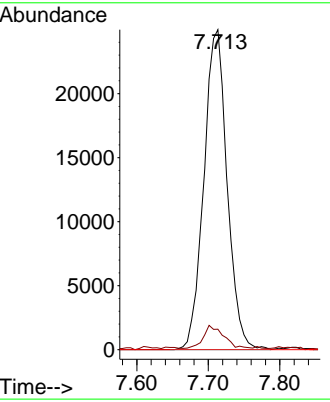
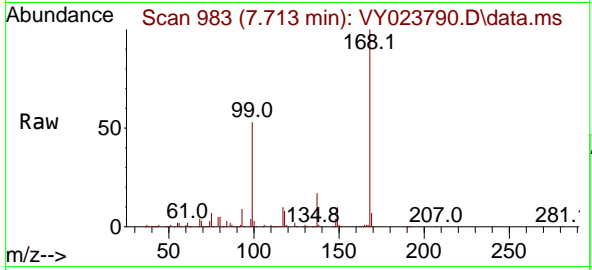


#38
 Carbon Tetrachloride
 Concen: 5.517 ug/l
 RT: 7.713 min Scan# 91
 Delta R.T. -0.104 min
 Lab File: VY023790.D
 Acq: 24 Nov 2025 15:11

Instrument : MSVOA_Y
 ClientSampleId : RBR200028-RT5376-COMP

Tgt Ion:117 Resp: 56482

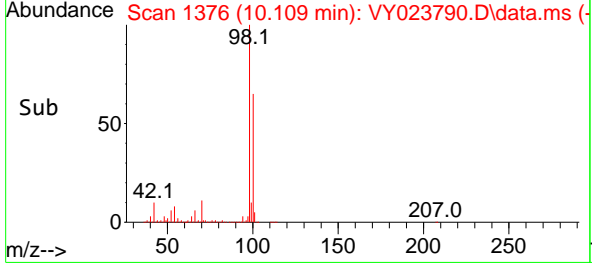
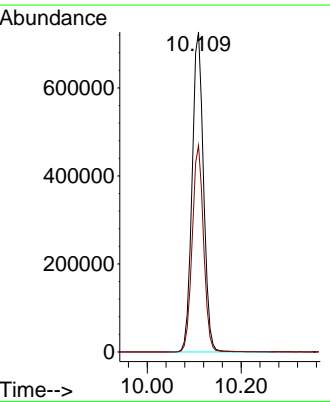
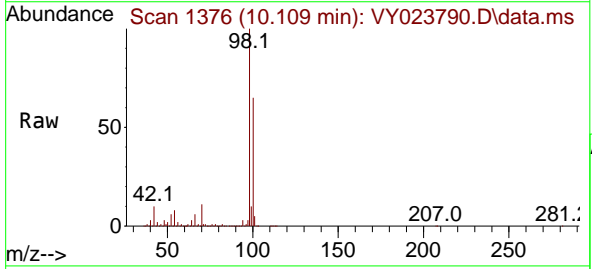
Ion	Ratio	Lower	Upper
117	100		
119	6.0	76.3	114.5#
121	0.0	24.8	37.2#

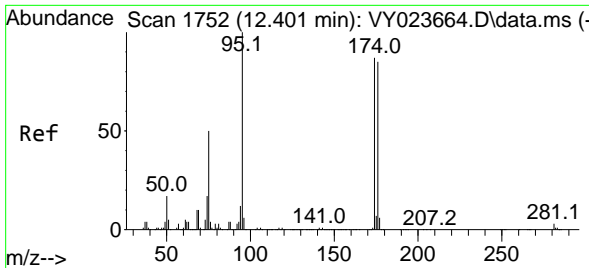


#50
 Toluene-d8
 Concen: 50.696 ug/l
 RT: 10.109 min Scan# 1376
 Delta R.T. 0.000 min
 Lab File: VY023790.D
 Acq: 24 Nov 2025 15:11

Tgt Ion: 98 Resp: 1228034

Ion	Ratio	Lower	Upper
98	100		
100	64.3	52.7	79.1



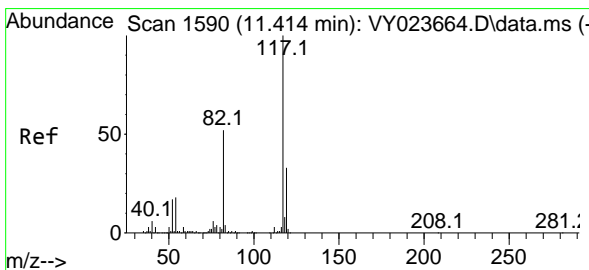
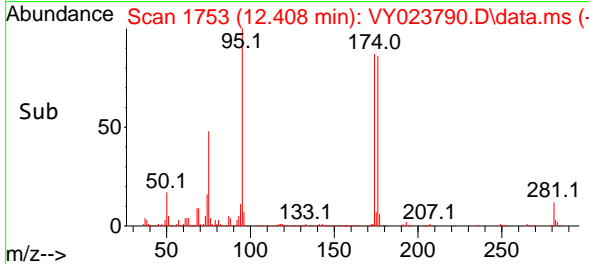
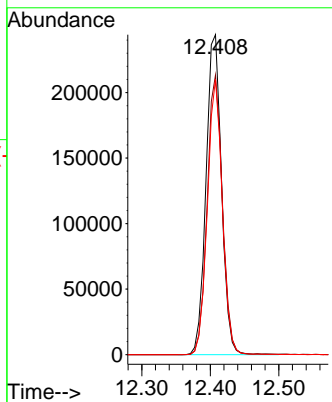
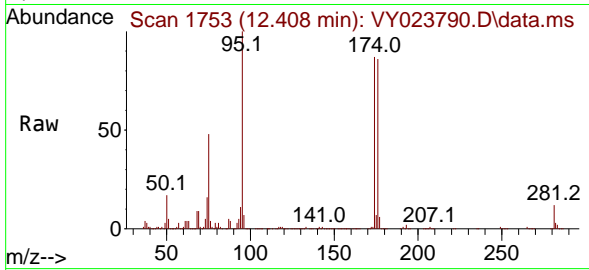


#62
 4-Bromofluorobenzene
 Concen: 49.000 ug/l
 RT: 12.408 min Scan# 1753
 Delta R.T. 0.006 min
 Lab File: VY023790.D
 Acq: 24 Nov 2025 15:11

Instrument : MSVOA_Y
 ClientSampleId : RBR200028-RT5376-COMP

Tgt Ion: 95 Resp: 383856

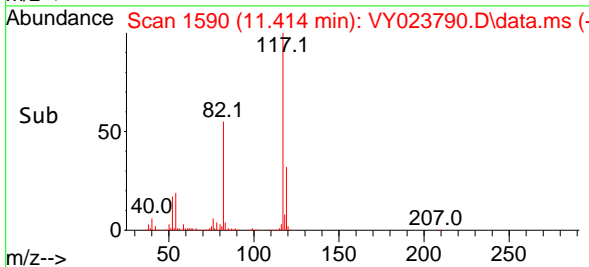
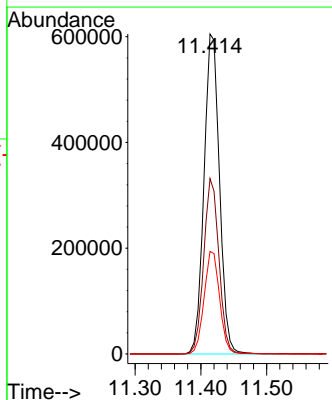
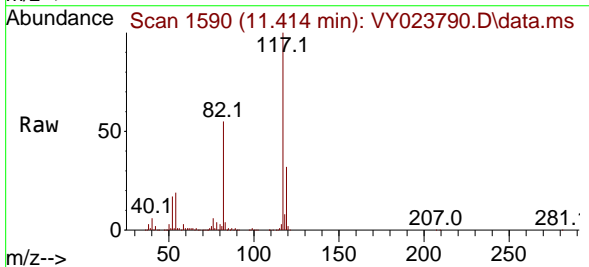
Ion	Ratio	Lower	Upper
95	100		
174	86.1	0.0	184.8
176	83.2	0.0	181.6

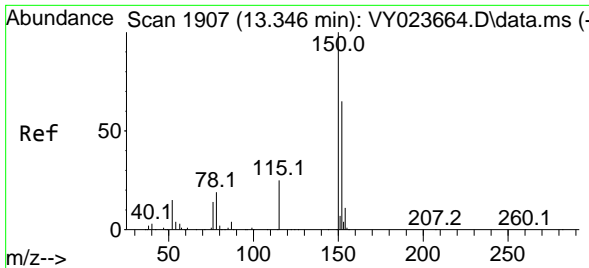


#63
 Chlorobenzene-d5
 Concen: 50.000 ug/l
 RT: 11.414 min Scan# 1590
 Delta R.T. 0.000 min
 Lab File: VY023790.D
 Acq: 24 Nov 2025 15:11

Tgt Ion: 117 Resp: 993648

Ion	Ratio	Lower	Upper
117	100		
82	54.8	41.2	61.8
119	32.0	26.2	39.2



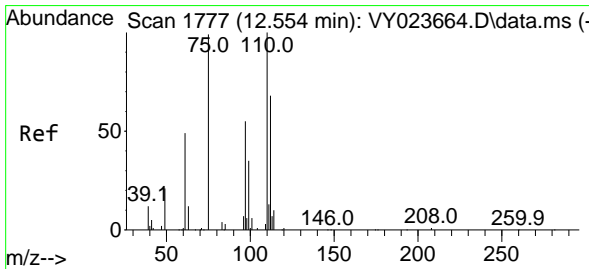
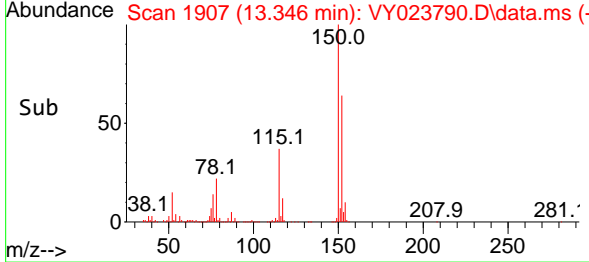
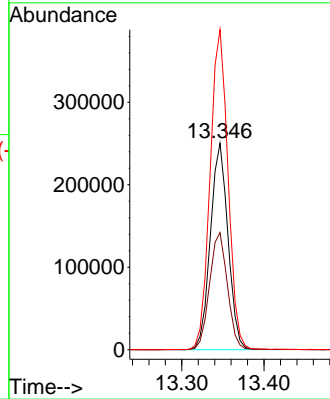
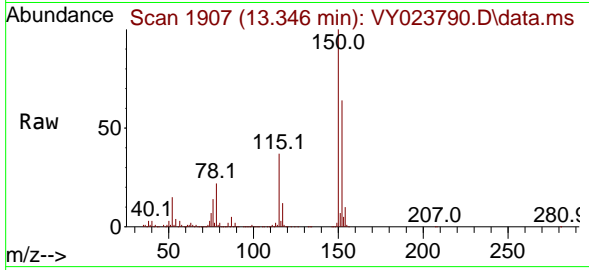


#72
 1,4-Dichlorobenzene-d4
 Concen: 50.000 ug/l
 RT: 13.346 min Scan# 1907
 Delta R.T. 0.000 min
 Lab File: VY023790.D
 Acq: 24 Nov 2025 15:11

Instrument : MSVOA_Y
 ClientSampleId : RBR200028-RT5376-COMP

Tgt Ion:152 Resp: 372942

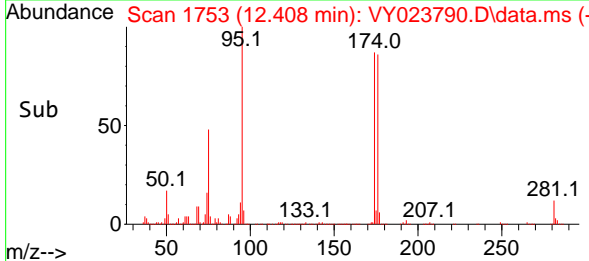
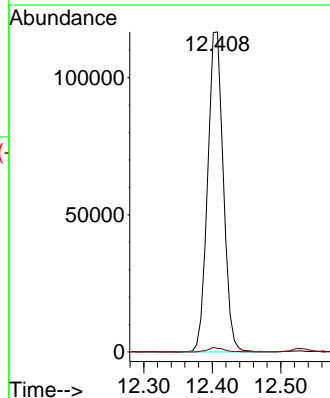
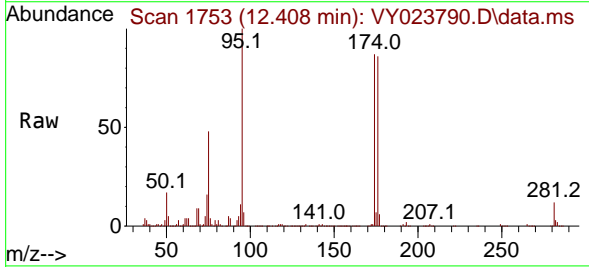
Ion	Ratio	Lower	Upper
152	100		
115	57.6	27.5	82.5
150	156.9	0.0	349.0

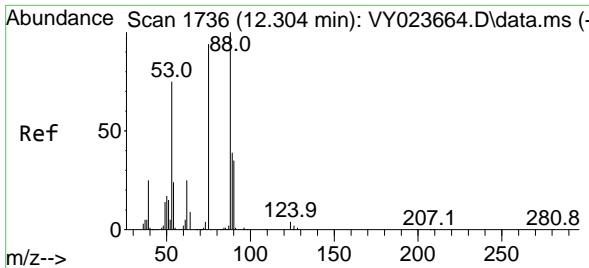


#76
 1,2,3-Trichloropropane
 Concen: 61.613 ug/l
 RT: 12.408 min Scan# 1753
 Delta R.T. -0.146 min
 Lab File: VY023790.D
 Acq: 24 Nov 2025 15:11

Tgt Ion: 75 Resp: 185964

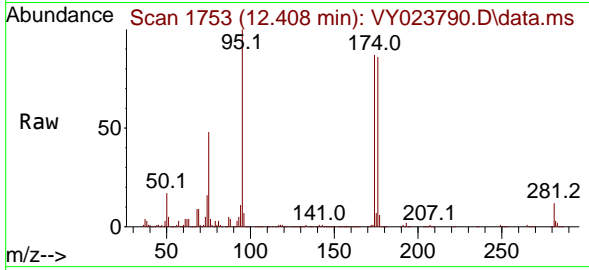
Ion	Ratio	Lower	Upper
75	100		
77	1.4	0.0	0.0#



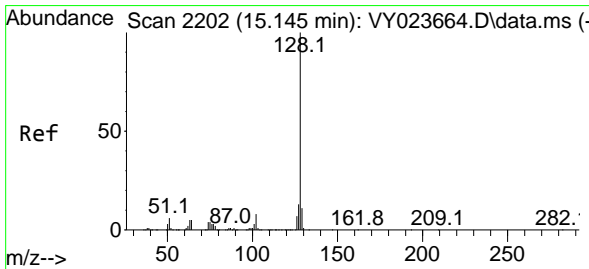
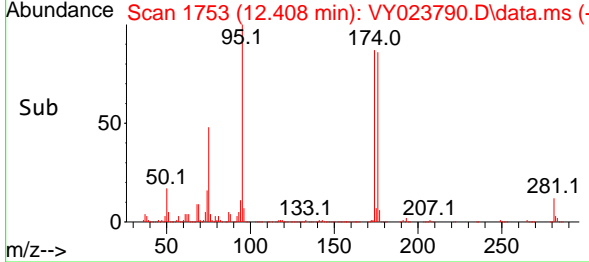
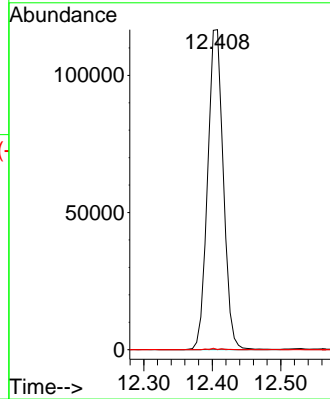


#81
 trans-1,4-Dichloro-2-butene
 Concen: 139.242 ug/l
 RT: 12.408 min Scan# 1753
 Delta R.T. 0.104 min
 Lab File: VY023790.D
 Acq: 24 Nov 2025 15:11

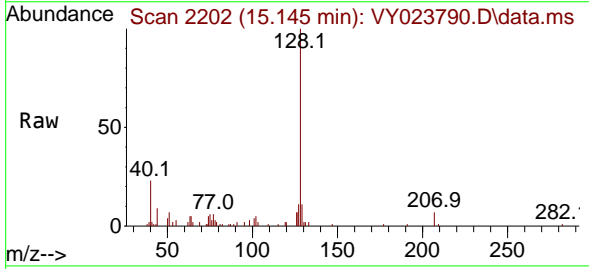
Instrument : MSVOA_Y
 ClientSampleId : RBR200028-RT5376-COMP



Tgt Ion: 75 Resp: 185964
 Ion Ratio Lower Upper
 75 100
 53 0.2 69.6 104.4#
 89 0.2 38.2 57.4#



#95
 Naphthalene
 Concen: 6.055 ug/l
 RT: 15.145 min Scan# 2202
 Delta R.T. 0.000 min
 Lab File: VY023790.D
 Acq: 24 Nov 2025 15:11



Tgt Ion: 128 Resp: 9722
 Ion Ratio Lower Upper
 128 100
 127 12.8 10.5 15.7
 129 12.9 8.8 13.2

