

Data Path : Z:\voasrv\HPCHEM1\MSVOA\_Y\Data\VY112425\  
 Data File : VY023793.D  
 Acq On : 24 Nov 2025 16:24  
 Operator : SY/MD  
 Sample : Q3711-01  
 Misc : 4.11g/5.0mL/MSVOA\_Y/SOIL/A  
 ALS Vial : 9 Sample Multiplier: 1

Instrument :  
 MSVOA\_Y  
 ClientSampleId :  
 VNJ-222

Quant Time: Nov 26 02:13:16 2025  
 Quant Method : Z:\voasrv\HPCHEM1\MSVOA\_Y\methods\82Y110425S.M  
 Quant Title : SW846 8260  
 QLast Update : Wed Nov 05 04:41:50 2025  
 Response via : Initial Calibration

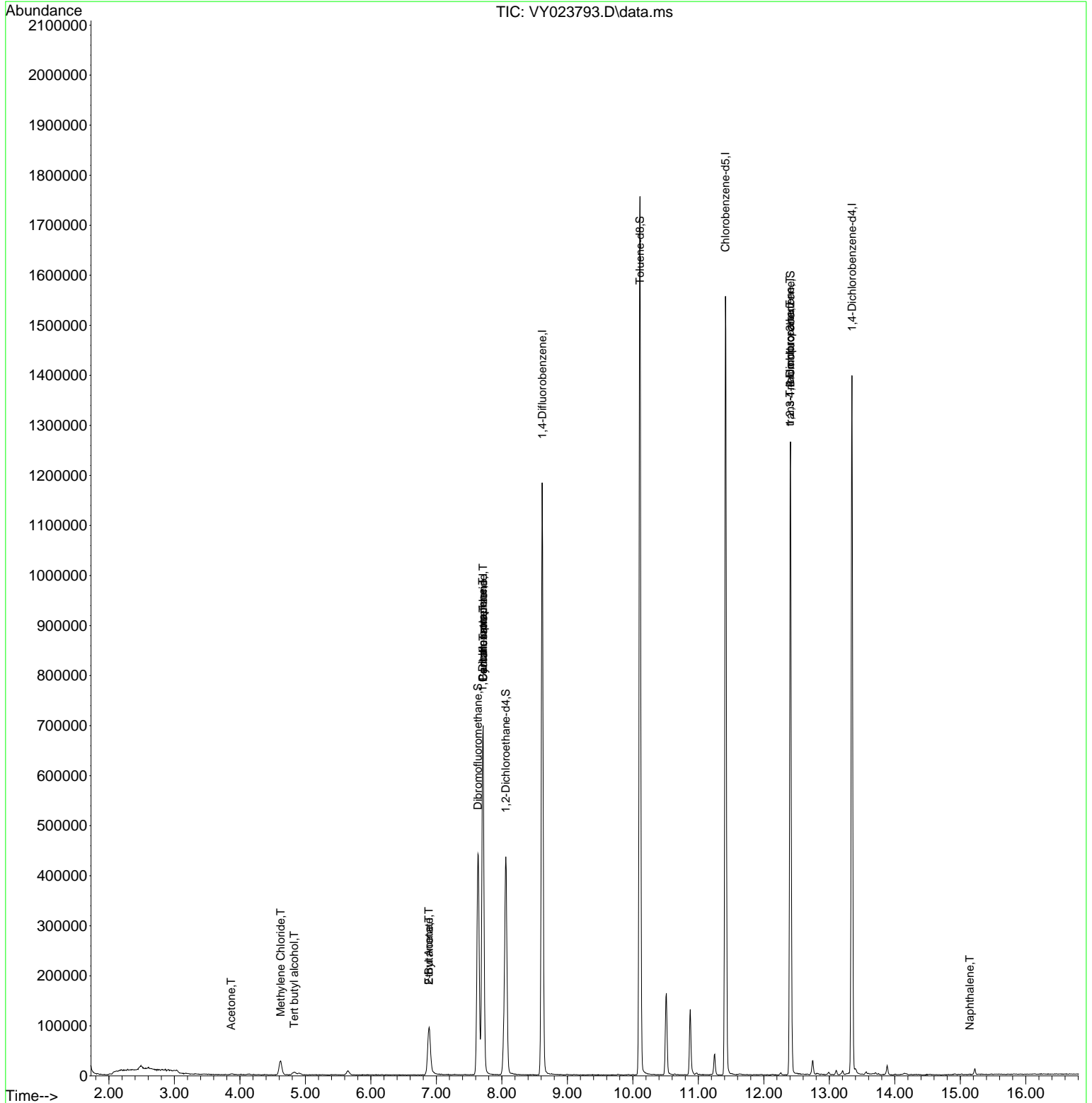
Compound	R.T.	QIon	Response	Conc	Units	Dev(Min)
-----						
Internal Standards						
1) Pentafluorobenzene	7.713	168	550432	50.000	ug/l	0.00
34) 1,4-Difluorobenzene	8.616	114	1010501	50.000	ug/l	0.00
63) Chlorobenzene-d5	11.414	117	868072	50.000	ug/l	0.00
72) 1,4-Dichlorobenzene-d4	13.347	152	367879	50.000	ug/l	0.00
System Monitoring Compounds						
33) 1,2-Dichloroethane-d4	8.061	65	298298	63.532	ug/l	0.00
Spiked Amount	50.000	Range	50 - 163	Recovery	=	127.060%
35) Dibromofluoromethane	7.634	113	327870	51.920	ug/l	0.00
Spiked Amount	50.000	Range	54 - 147	Recovery	=	103.840%
50) Toluene-d8	10.109	98	1160566	49.336	ug/l	0.00
Spiked Amount	50.000	Range	58 - 134	Recovery	=	98.680%
62) 4-Bromofluorobenzene	12.408	95	381270	50.119	ug/l	0.00
Spiked Amount	50.000	Range	30 - 143	Recovery	=	100.240%
Target Compounds						
					Qvalue	
11) Tert butyl alcohol	4.830	59	5976	19.739	ug/l #	77
16) Acetone	3.867	43	2536	2.173	ug/l #	78
20) Methylene Chloride	4.622	84	21016	3.730	ug/l	95
25) 2-Butanone	6.884	43	5027	3.725	ug/l #	72
31) Cyclohexane	7.713	56	10825	1.399	ug/l #	1
36) 1,1-Dichloropropene	7.707	75	41509	4.919	ug/l #	48
37) Ethyl Acetate	6.884	43	5027	1.539	ug/l #	1
38) Carbon Tetrachloride	7.713	117	53781	5.409	ug/l #	17
76) 1,2,3-Trichloropropane	12.402	75	186928	62.785	ug/l #	100
81) trans-1,4-Dichloro-2-b...	12.402	75	186928	141.890	ug/l #	14
95) Naphthalene	15.145	128	960	5.341	ug/l #	92

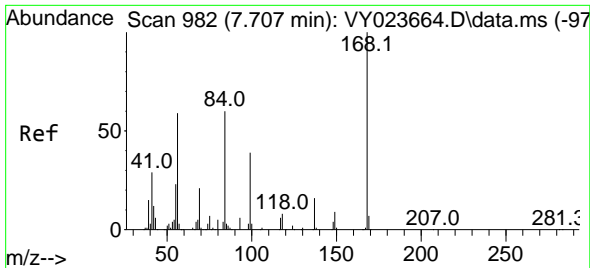
(#) = qualifier out of range (m) = manual integration (+) = signals summed

Data Path : Z:\voasrv\HPCHEM1\MSVOA\_Y\Data\VY112425\  
 Data File : VY023793.D  
 Acq On : 24 Nov 2025 16:24  
 Operator : SY/MD  
 Sample : Q3711-01  
 Misc : 4.11g/5.0mL/MSVOA\_Y/SOIL/A  
 ALS Vial : 9 Sample Multiplier: 1

Instrument :  
 MSVOA\_Y  
 ClientSampleId :  
 VNJ-222

Quant Time: Nov 26 02:13:16 2025  
 Quant Method : Z:\voasrv\HPCHEM1\MSVOA\_Y\methods\82Y110425S.M  
 Quant Title : SW846 8260  
 QLast Update : Wed Nov 05 04:41:50 2025  
 Response via : Initial Calibration

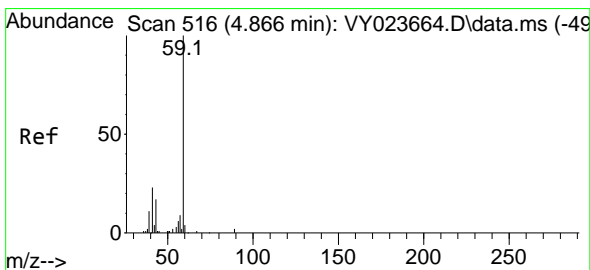
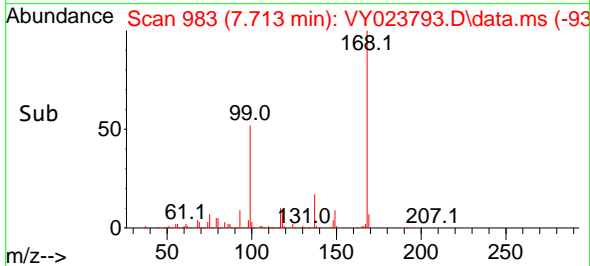
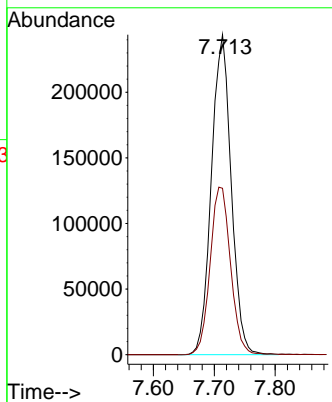
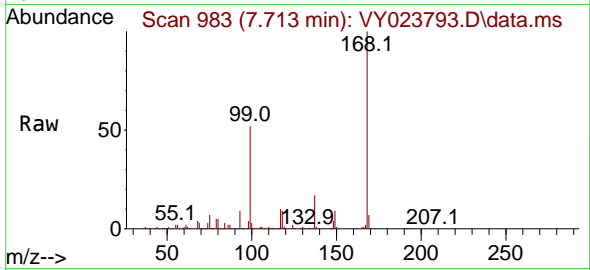




#1  
 Pentafluorobenzene  
 Concen: 50.000 ug/l  
 RT: 7.713 min Scan# 99  
 Delta R.T. 0.006 min  
 Lab File: VY023793.D  
 Acq: 24 Nov 2025 16:24

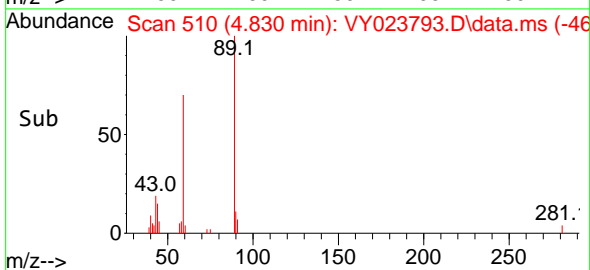
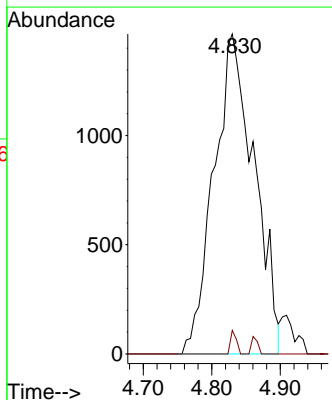
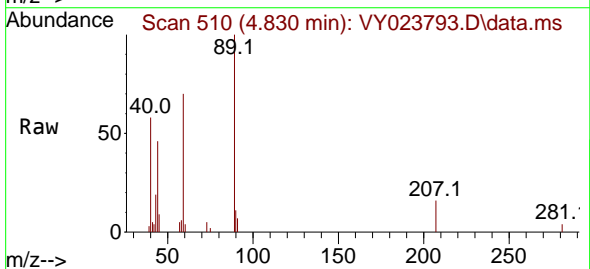
Instrument :  
 MSVOA\_Y  
 ClientSampleId :  
 VNJ-222

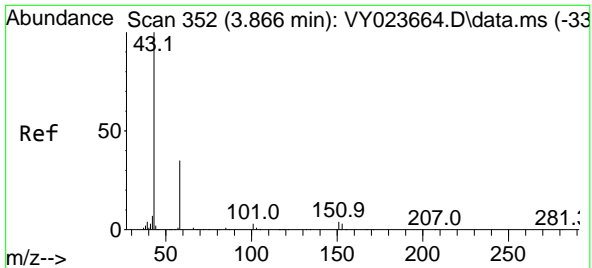
Tgt Ion:168 Resp: 550432  
 Ion Ratio Lower Upper  
 168 100  
 99 52.0 41.0 61.4



#11  
 Tert butyl alcohol  
 Concen: 19.739 ug/l  
 RT: 4.830 min Scan# 510  
 Delta R.T. -0.036 min  
 Lab File: VY023793.D  
 Acq: 24 Nov 2025 16:24

Tgt Ion: 59 Resp: 5976  
 Ion Ratio Lower Upper  
 59 100  
 57 1.1 7.4 11.2#

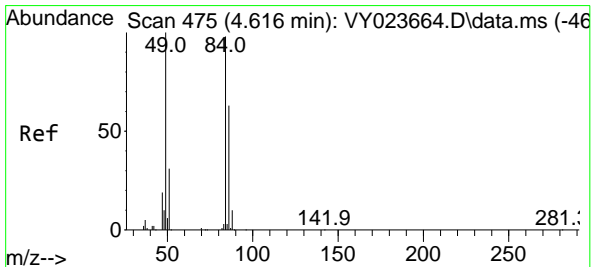
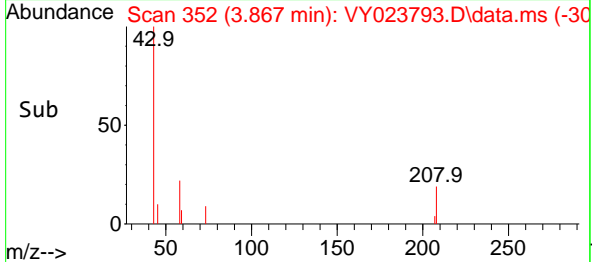
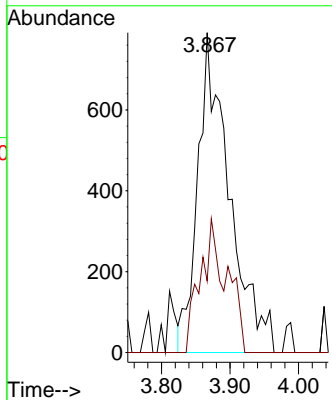
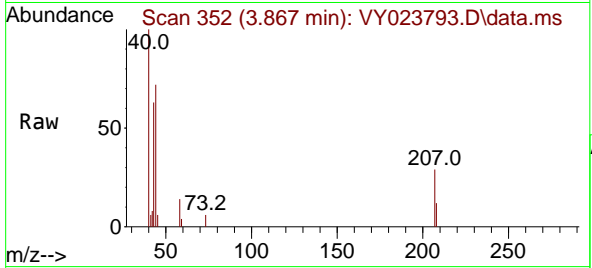




#16  
 Acetone  
 Concen: 2.173 ug/l  
 RT: 3.867 min Scan# 31  
 Delta R.T. 0.000 min  
 Lab File: VY023793.D  
 Acq: 24 Nov 2025 16:24

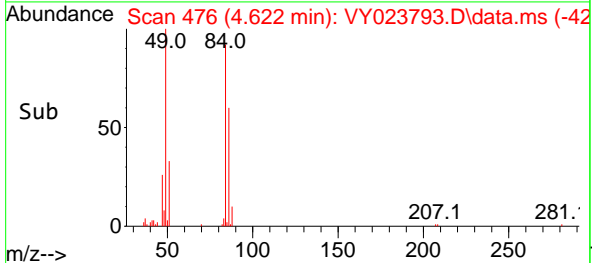
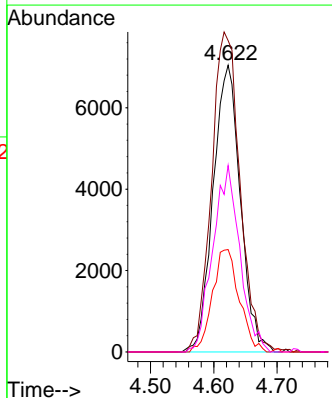
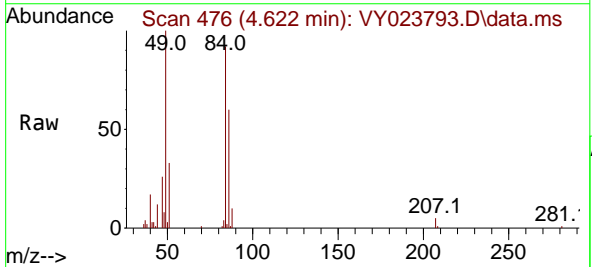
Instrument :  
 MSVOA\_Y  
 ClientSampleId :  
 VNJ-222

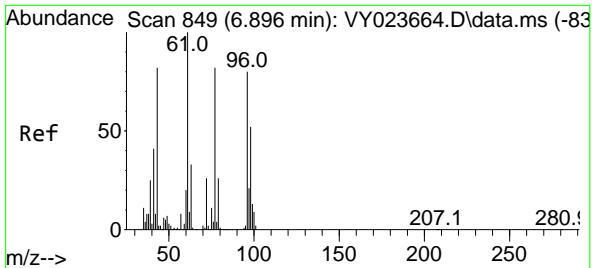
Tgt Ion: 43 Resp: 2536  
 Ion Ratio Lower Upper  
 43 100  
 58 22.4 28.2 42.4#



#20  
 Methylene Chloride  
 Concen: 3.730 ug/l  
 RT: 4.622 min Scan# 476  
 Delta R.T. 0.006 min  
 Lab File: VY023793.D  
 Acq: 24 Nov 2025 16:24

Tgt Ion: 84 Resp: 21016  
 Ion Ratio Lower Upper  
 84 100  
 49 108.6 81.5 122.3  
 51 35.7 25.5 38.3  
 86 65.0 51.2 76.8

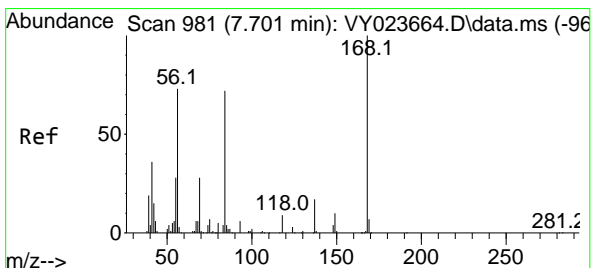
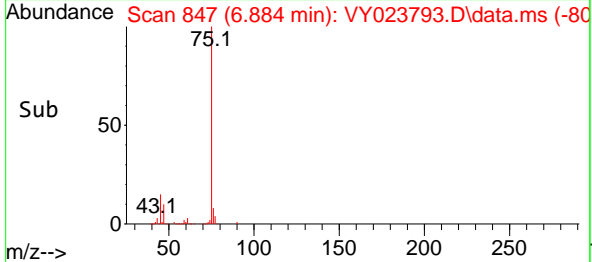
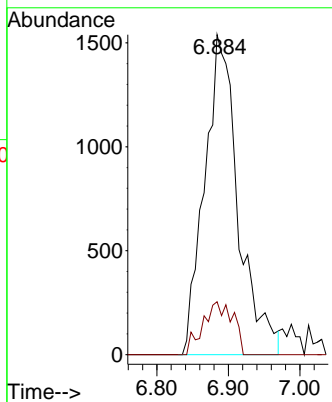
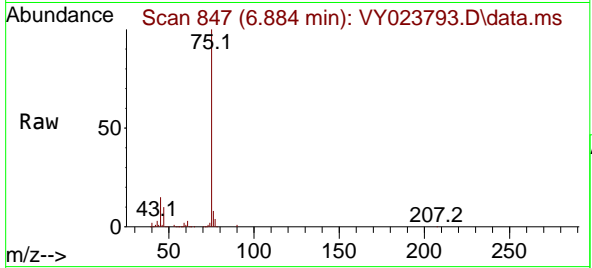




#25  
 2-Butanone  
 Concen: 3.725 ug/l  
 RT: 6.884 min Scan# 847  
 Delta R.T. -0.012 min  
 Lab File: VY023793.D  
 Acq: 24 Nov 2025 16:24

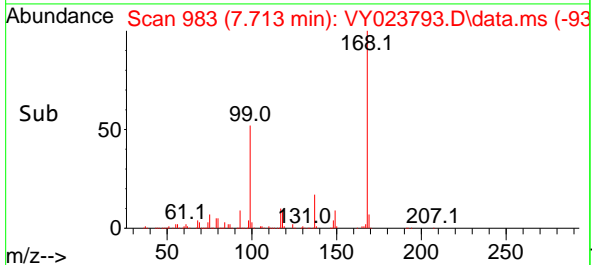
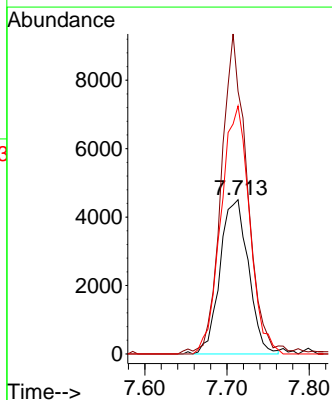
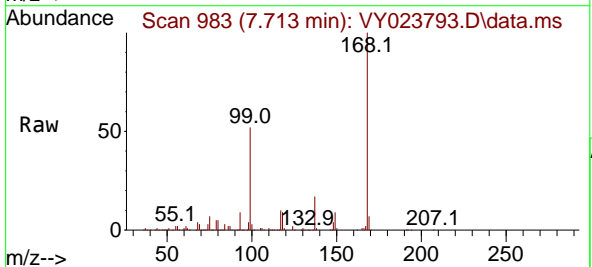
Instrument : MSVOA\_Y  
 ClientSampleId : VNJ-222

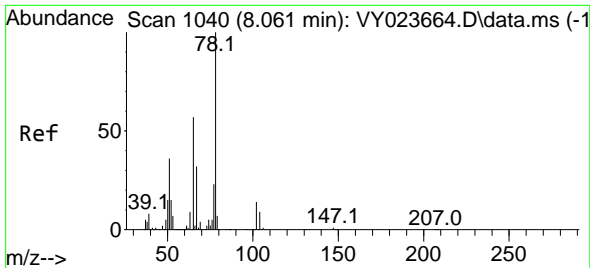
Tgt Ion: 43 Resp: 5027  
 Ion Ratio Lower Upper  
 43 100  
 72 16.6 25.7 38.5#



#31  
 Cyclohexane  
 Concen: 1.399 ug/l  
 RT: 7.713 min Scan# 983  
 Delta R.T. 0.012 min  
 Lab File: VY023793.D  
 Acq: 24 Nov 2025 16:24

Tgt Ion: 56 Resp: 10825  
 Ion Ratio Lower Upper  
 56 100  
 69 170.3 30.5 45.7#  
 84 160.8 79.0 118.4#

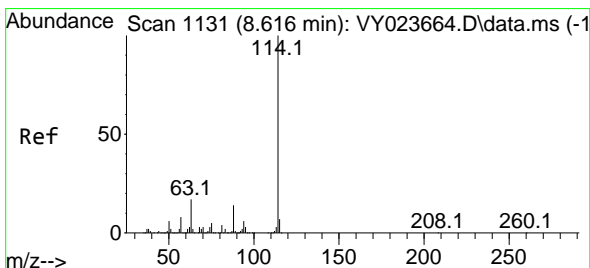
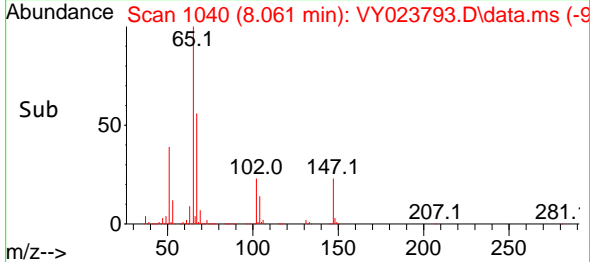
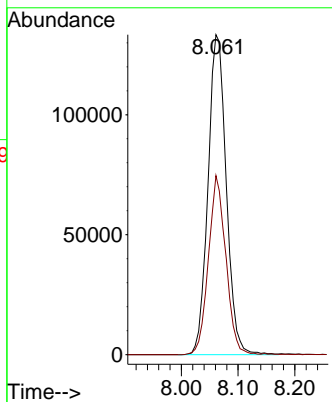
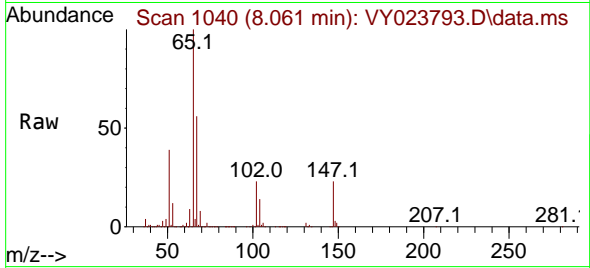




#33  
 1,2-Dichloroethane-d4  
 Concen: 63.532 ug/l  
 RT: 8.061 min Scan# 1040  
 Delta R.T. 0.000 min  
 Lab File: VY023793.D  
 Acq: 24 Nov 2025 16:24

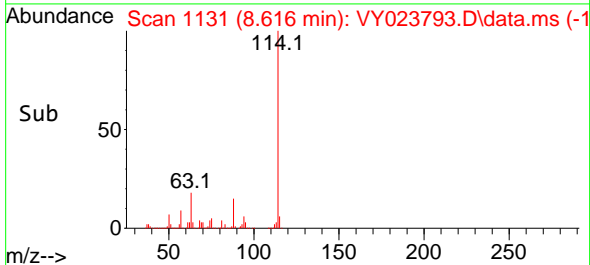
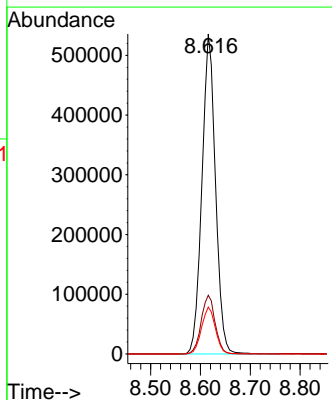
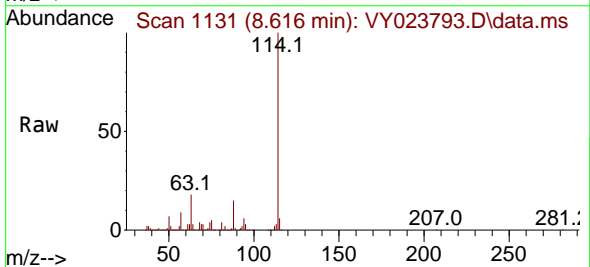
Instrument :  
 MSVOA\_Y  
 ClientSampleId :  
 VNJ-222

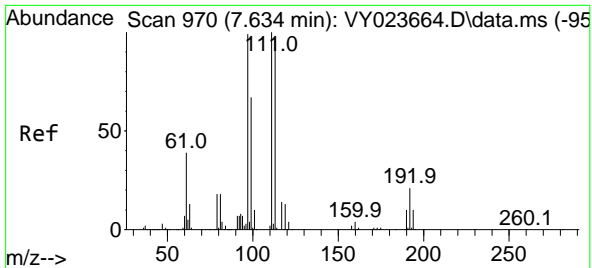
Tgt Ion: 65 Resp: 298298  
 Ion Ratio Lower Upper  
 65 100  
 67 53.4 0.0 107.4



#34  
 1,4-Difluorobenzene  
 Concen: 50.000 ug/l  
 RT: 8.616 min Scan# 1131  
 Delta R.T. 0.000 min  
 Lab File: VY023793.D  
 Acq: 24 Nov 2025 16:24

Tgt Ion:114 Resp: 1010501  
 Ion Ratio Lower Upper  
 114 100  
 63 18.4 0.0 33.8  
 88 14.7 0.0 29.0

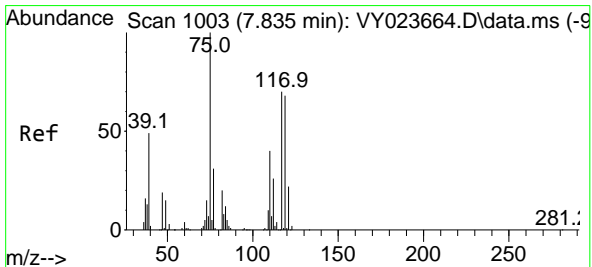
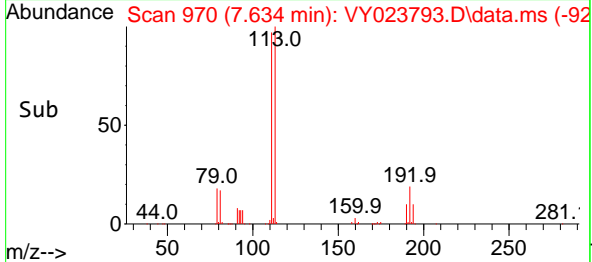
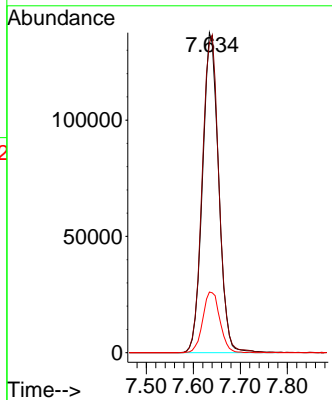
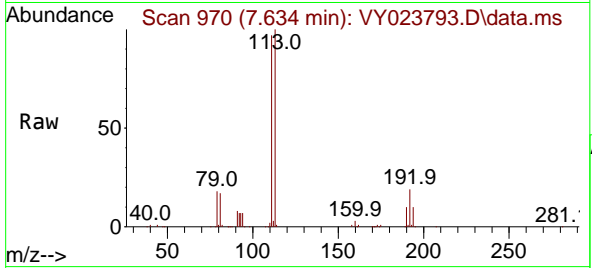




#35  
 Dibromofluoromethane  
 Concen: 51.920 ug/l  
 RT: 7.634 min Scan# 91  
 Delta R.T. 0.000 min  
 Lab File: VY023793.D  
 Acq: 24 Nov 2025 16:24

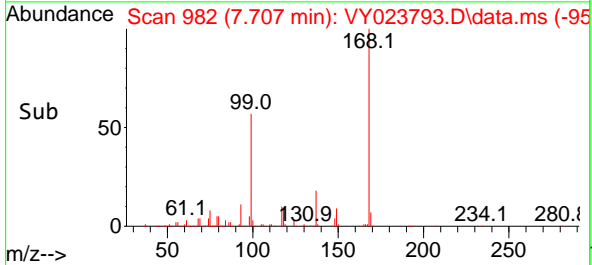
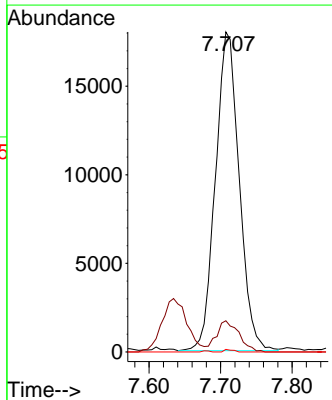
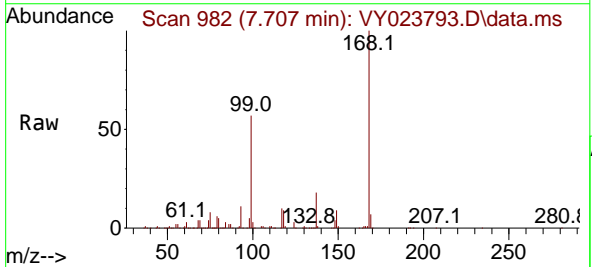
Instrument : MSVOA\_Y  
 ClientSampleId : VNJ-222

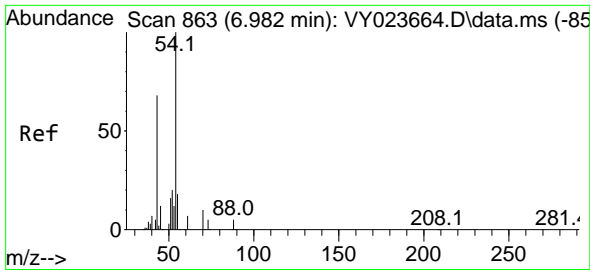
Tgt Ion	Resp	Lower	Upper
113	100		
111	102.0	82.2	123.4
192	20.1	17.3	25.9



#36  
 1,1-Dichloropropene  
 Concen: 4.919 ug/l  
 RT: 7.707 min Scan# 982  
 Delta R.T. -0.128 min  
 Lab File: VY023793.D  
 Acq: 24 Nov 2025 16:24

Tgt Ion	Resp	Lower	Upper
75	100		
110	9.3	19.7	59.0#
77	0.3	25.2	37.8#

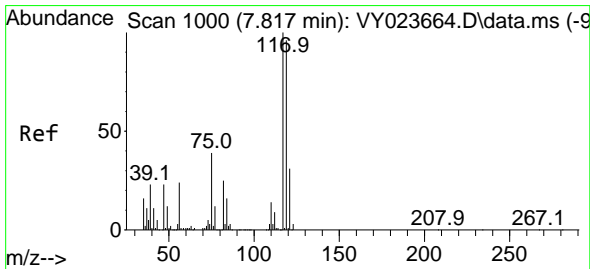
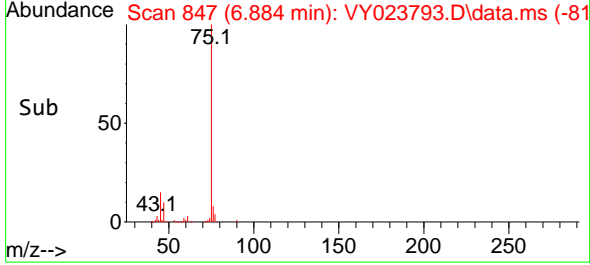
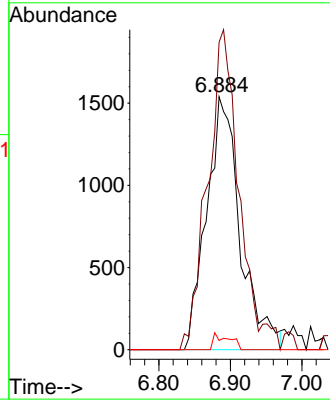
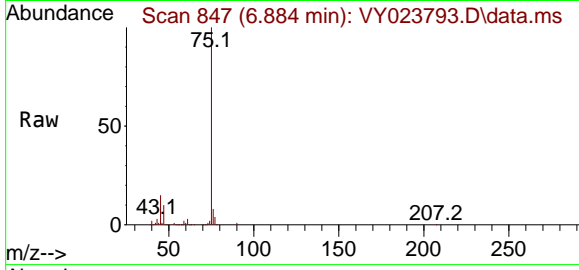




#37  
 Ethyl Acetate  
 Concen: 1.539 ug/l  
 RT: 6.884 min Scan# 84  
 Delta R.T. -0.097 min  
 Lab File: VY023793.D  
 Acq: 24 Nov 2025 16:24

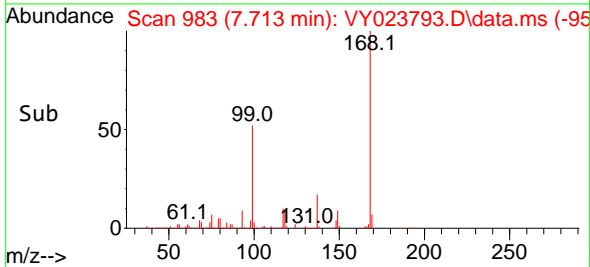
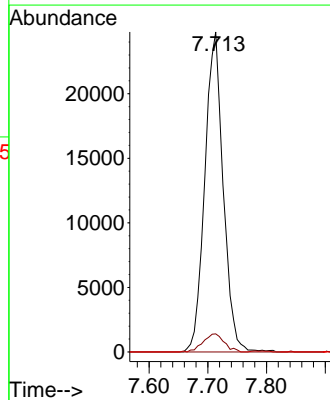
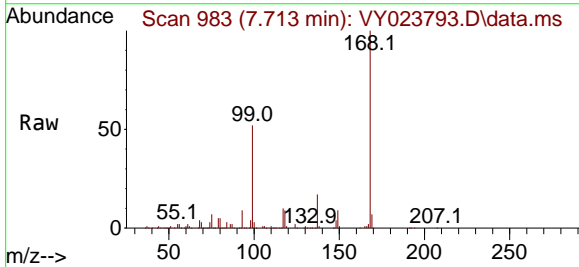
Instrument :  
 MSVOA\_Y  
 ClientSampleId :  
 VNJ-222

Tgt Ion: 43 Resp: 5027  
 Ion Ratio Lower Upper  
 43 100  
 61 114.5 12.4 18.6#  
 70 3.1 9.8 14.8#

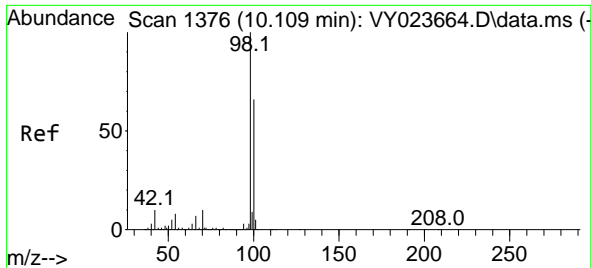


#38  
 Carbon Tetrachloride  
 Concen: 5.409 ug/l  
 RT: 7.713 min Scan# 983  
 Delta R.T. -0.104 min  
 Lab File: VY023793.D  
 Acq: 24 Nov 2025 16:24

Tgt Ion:117 Resp: 53781  
 Ion Ratio Lower Upper  
 117 100  
 119 5.6 76.3 114.5#  
 121 0.0 24.8 37.2#



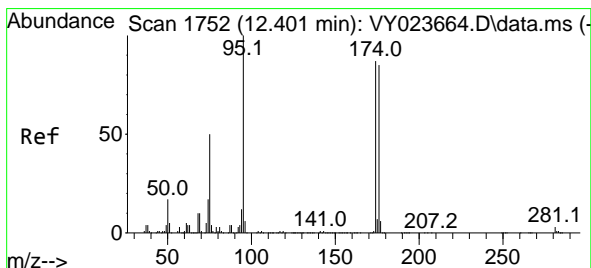
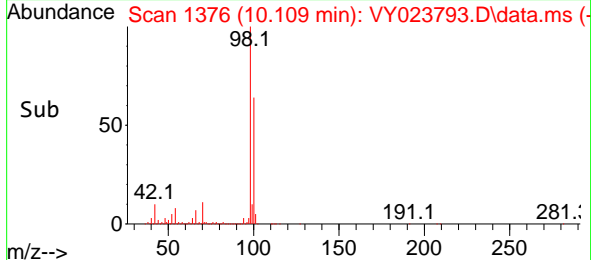
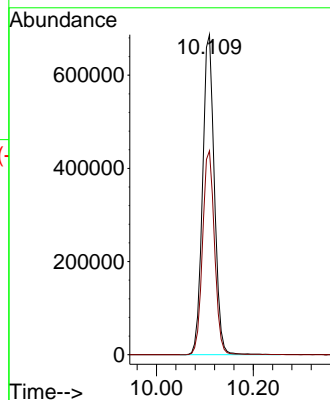
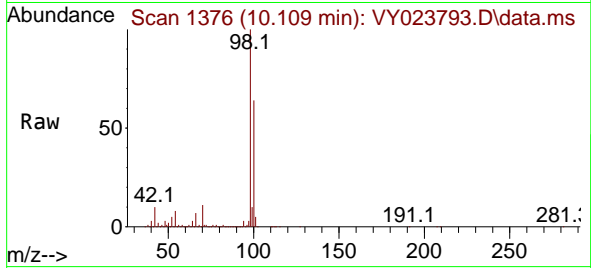




#50  
 Toluene-d8  
 Concen: 49.336 ug/l  
 RT: 10.109 min Scan# 11  
 Delta R.T. 0.000 min  
 Lab File: VY023793.D  
 Acq: 24 Nov 2025 16:24

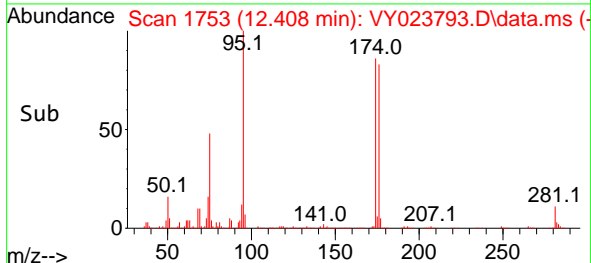
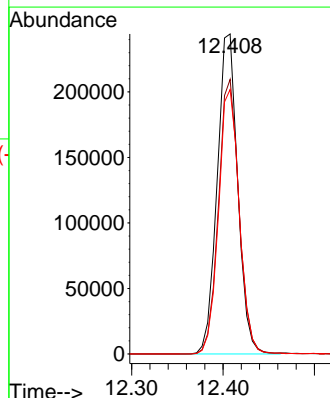
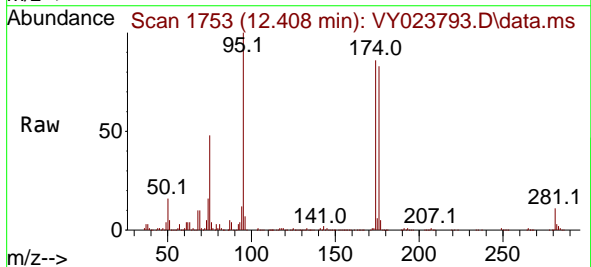
Instrument :  
 MSVOA\_Y  
 ClientSampleId :  
 VNJ-222

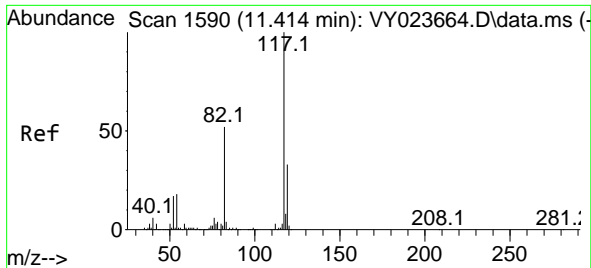
Tgt Ion: 98 Resp: 1160566  
 Ion Ratio Lower Upper  
 98 100  
 100 64.7 52.7 79.1



#62  
 4-Bromofluorobenzene  
 Concen: 50.119 ug/l  
 RT: 12.408 min Scan# 1753  
 Delta R.T. 0.006 min  
 Lab File: VY023793.D  
 Acq: 24 Nov 2025 16:24

Tgt Ion: 95 Resp: 381270  
 Ion Ratio Lower Upper  
 95 100  
 174 86.0 0.0 184.8  
 176 83.4 0.0 181.6

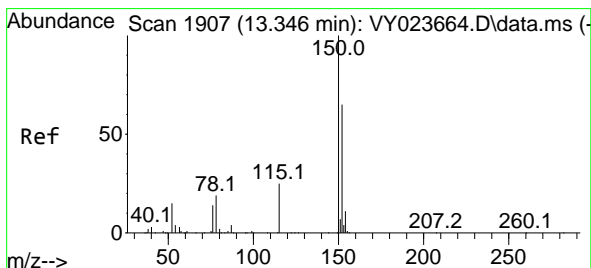
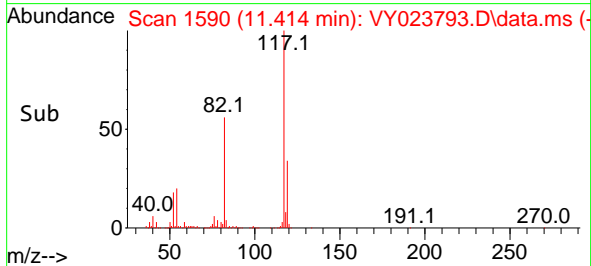
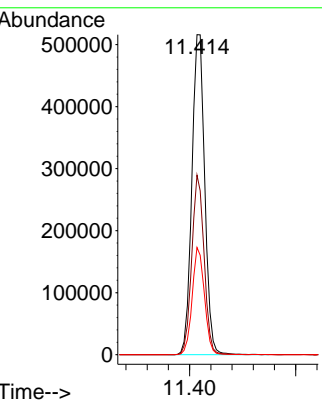
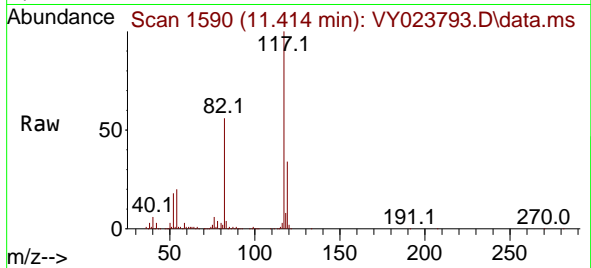




#63  
 Chlorobenzene-d5  
 Concen: 50.000 ug/l  
 RT: 11.414 min Scan# 117  
 Delta R.T. 0.000 min  
 Lab File: VY023793.D  
 Acq: 24 Nov 2025 16:24

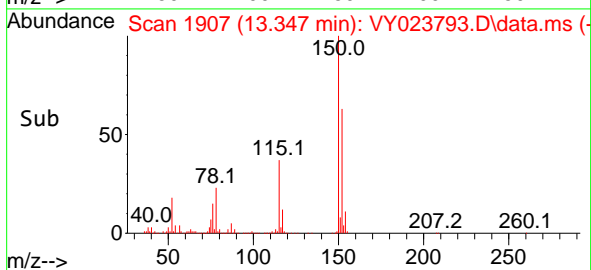
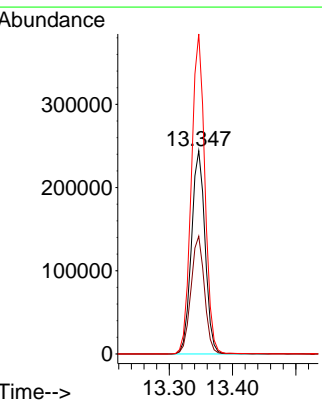
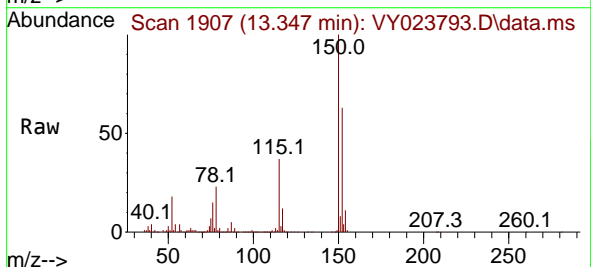
Instrument : MSVOA\_Y  
 ClientSampleId : VNJ-222

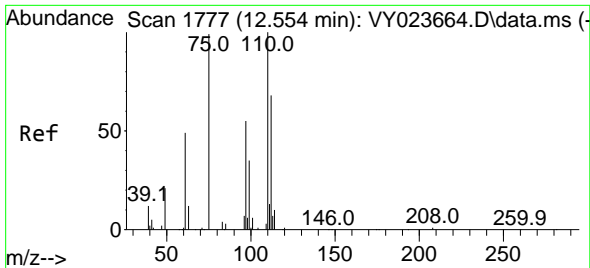
Tgt Ion	Resp	Lower	Upper
117	868072	100	100
82	56.1	41.2	61.8
119	33.5	26.2	39.2



#72  
 1,4-Dichlorobenzene-d4  
 Concen: 50.000 ug/l  
 RT: 13.347 min Scan# 1907  
 Delta R.T. 0.000 min  
 Lab File: VY023793.D  
 Acq: 24 Nov 2025 16:24

Tgt Ion	Resp	Lower	Upper
152	367879	100	100
115	57.6	27.5	82.5
150	156.3	0.0	349.0

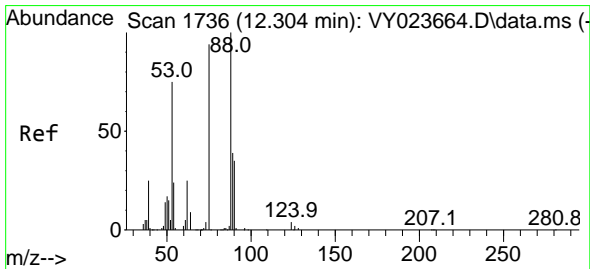
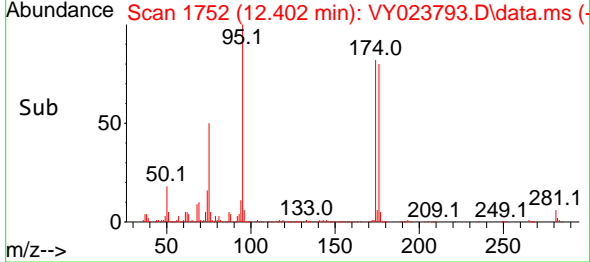
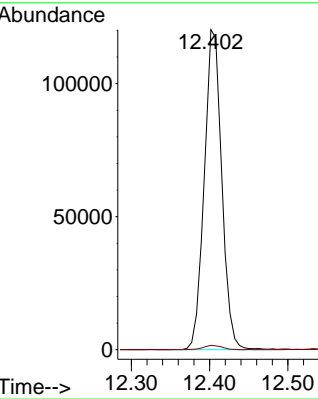
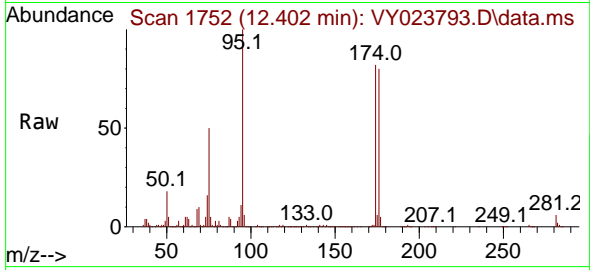




#76  
 1,2,3-Trichloropropane  
 Concen: 62.785 ug/l  
 RT: 12.402 min Scan# 1752  
 Delta R.T. -0.152 min  
 Lab File: VY023793.D  
 Acq: 24 Nov 2025 16:24

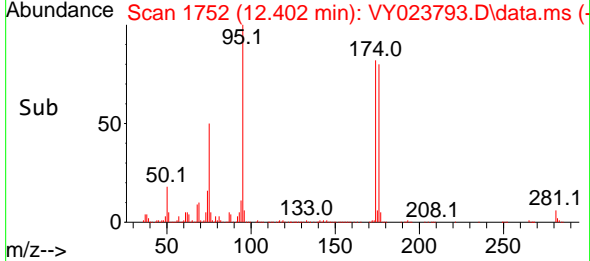
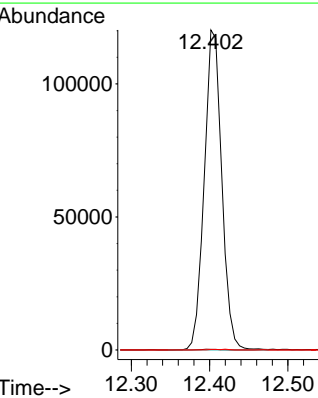
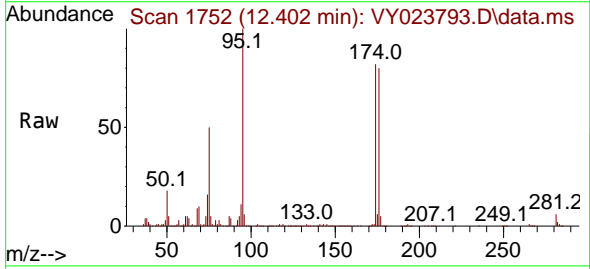
Instrument : MSVOA\_Y  
 ClientSampleId : VNJ-222

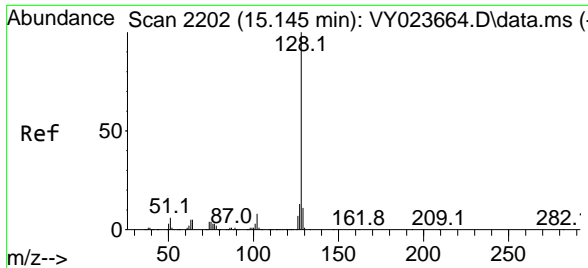
Tgt Ion: 75 Resp: 186928  
 Ion Ratio Lower Upper  
 75 100  
 77 1.4 0.0 0.0#



#81  
 trans-1,4-Dichloro-2-butene  
 Concen: 141.890 ug/l  
 RT: 12.402 min Scan# 1752  
 Delta R.T. 0.098 min  
 Lab File: VY023793.D  
 Acq: 24 Nov 2025 16:24

Tgt Ion: 75 Resp: 186928  
 Ion Ratio Lower Upper  
 75 100  
 53 0.2 69.6 104.4#  
 89 0.0 38.2 57.4#





#95  
 Naphthalene  
 Concen: 5.341 ug/l  
 RT: 15.145 min Scan# 21  
 Delta R.T. 0.000 min  
 Lab File: VY023793.D  
 Acq: 24 Nov 2025 16:24

Instrument : MSVOA\_Y  
 ClientSampleId : VNJ-222

Tgt Ion	Resp	Lower	Upper
128	100		
127	11.0	10.5	15.7
129	6.4	8.8	13.2#

