

Data Path : Z:\voasrv\HPCHEM1\MSVOA_Y\Data\VY112425\
 Data File : VY023795.D
 Acq On : 24 Nov 2025 17:12
 Operator : SY/MD
 Sample : Q3707-01
 Misc : 5.47g/5.0mL/MSVOA_Y/SOIL/A
 ALS Vial : 11 Sample Multiplier: 1

Instrument :
 MSVOA_Y
 ClientSampleId :
 V933

Quant Time: Nov 26 02:14:02 2025
 Quant Method : Z:\voasrv\HPCHEM1\MSVOA_Y\methods\82Y110425S.M
 Quant Title : SW846 8260
 QLast Update : Wed Nov 05 04:41:50 2025
 Response via : Initial Calibration

Compound	R.T.	QIon	Response	Conc	Units	Dev(Min)

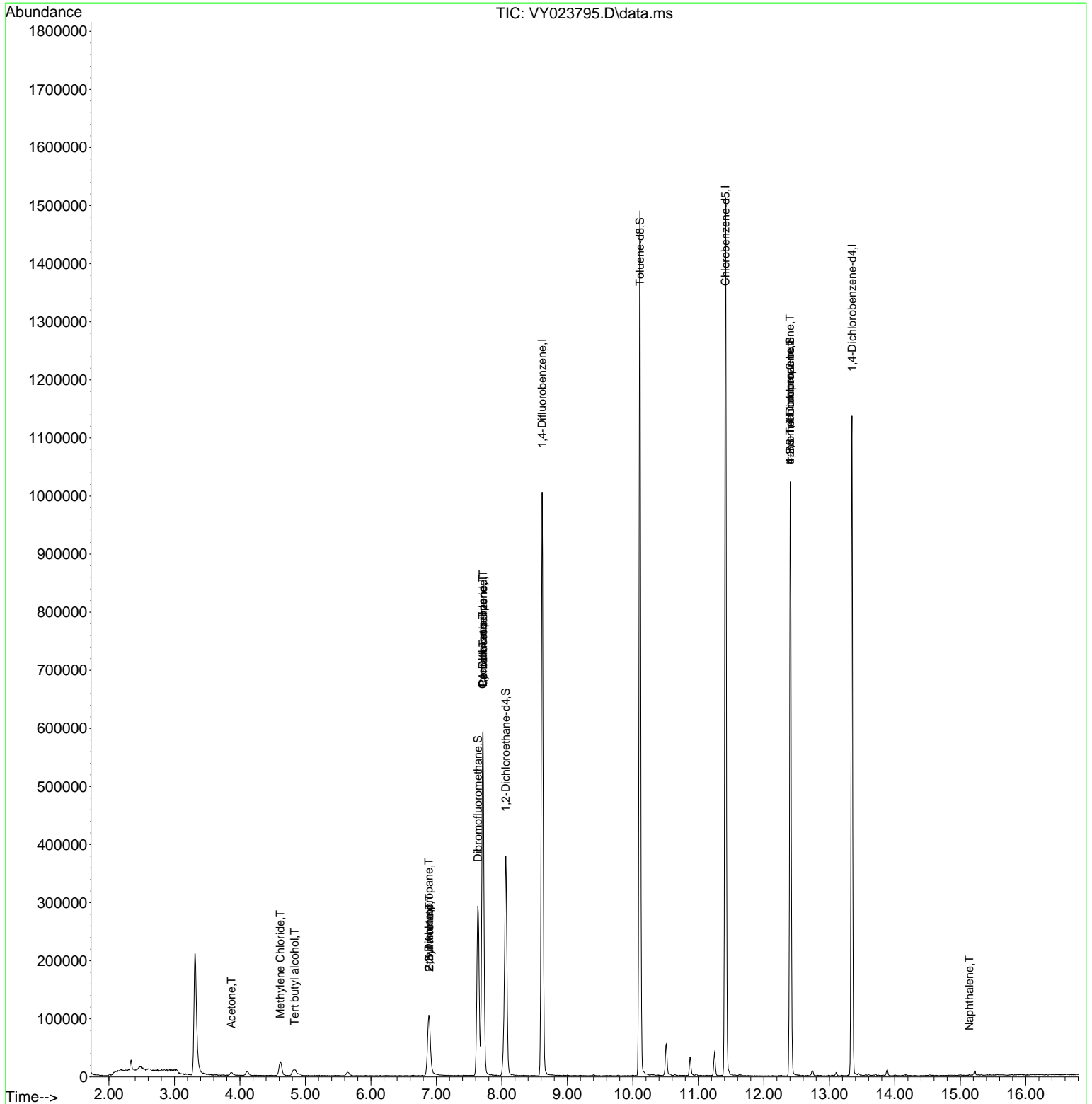
Internal Standards						
1) Pentafluorobenzene	7.713	168	472933	50.000	ug/l	0.00
34) 1,4-Difluorobenzene	8.615	114	857142	50.000	ug/l	0.00
63) Chlorobenzene-d5	11.414	117	835519	50.000	ug/l	0.00
72) 1,4-Dichlorobenzene-d4	13.346	152	316923	50.000	ug/l	0.00
System Monitoring Compounds						
33) 1,2-Dichloroethane-d4	8.061	65	259410	64.303	ug/l	0.00
Spiked Amount	50.000	Range	50 - 163	Recovery	=	128.600%
35) Dibromofluoromethane	7.634	113	218507	40.792	ug/l	0.00
Spiked Amount	50.000	Range	54 - 147	Recovery	=	81.580%
50) Toluene-d8	10.109	98	991728	49.702	ug/l	0.00
Spiked Amount	50.000	Range	58 - 134	Recovery	=	99.400%
62) 4-Bromofluorobenzene	12.401	95	318272	49.323	ug/l	0.00
Spiked Amount	50.000	Range	30 - 143	Recovery	=	98.640%
Target Compounds						
					Qvalue	
11) Tert butyl alcohol	4.836	59	13333	51.256	ug/l #	81
16) Acetone	3.872	43	9255	9.229	ug/l #	79
20) Methylene Chloride	4.616	84	18338	3.788	ug/l	96
25) 2-Butanone	6.890	43	6594	5.687	ug/l #	64
26) 2,2-Dichloropropane	6.884	77	7850	1.118	ug/l #	51
31) Cyclohexane	7.707	56	9702	1.459	ug/l #	1
36) 1,1-Dichloropropene	7.707	75	35513	4.961	ug/l #	47
37) Ethyl Acetate	6.890	43	6594	2.380	ug/l #	1
38) Carbon Tetrachloride	7.713	117	45989	5.453	ug/l #	16
76) 1,2,3-Trichloropropane	12.401	75	147262	57.414	ug/l #	100
81) trans-1,4-Dichloro-2-b...	12.401	75	147262	129.753	ug/l #	14
95) Naphthalene	15.139	128	929	5.351	ug/l #	80

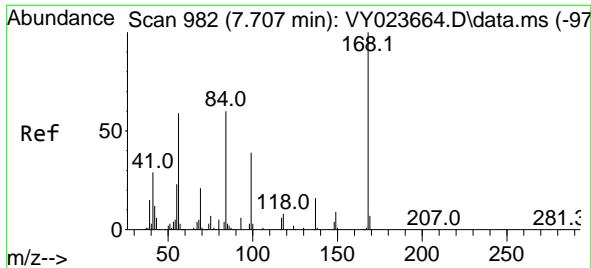
(#) = qualifier out of range (m) = manual integration (+) = signals summed

Data Path : Z:\voasrv\HPCHEM1\MSVOA_Y\Data\VY112425\
 Data File : VY023795.D
 Acq On : 24 Nov 2025 17:12
 Operator : SY/MD
 Sample : Q3707-01
 Misc : 5.47g/5.0mL/MSVOA_Y/SOIL/A
 ALS Vial : 11 Sample Multiplier: 1

Instrument :
 MSVOA_Y
 ClientSampleId :
 V933

Quant Time: Nov 26 02:14:02 2025
 Quant Method : Z:\voasrv\HPCHEM1\MSVOA_Y\methods\82Y110425S.M
 Quant Title : SW846 8260
 QLast Update : Wed Nov 05 04:41:50 2025
 Response via : Initial Calibration

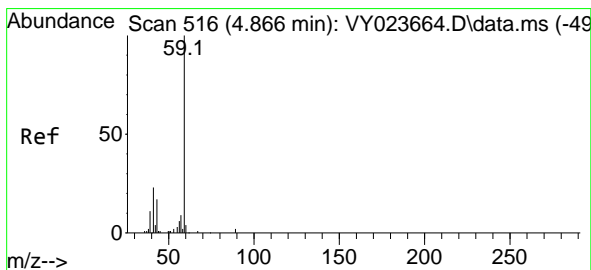
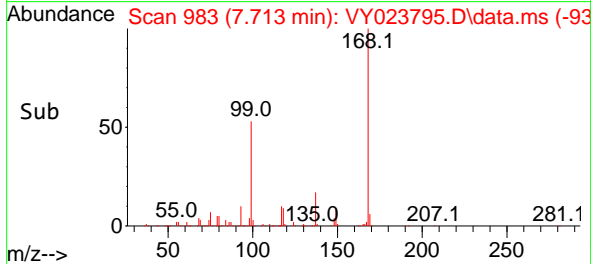
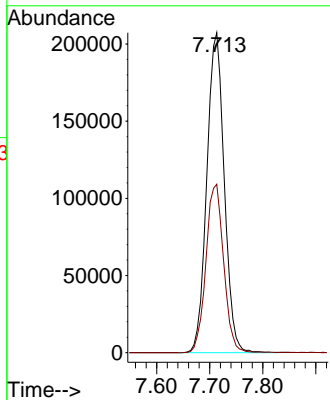
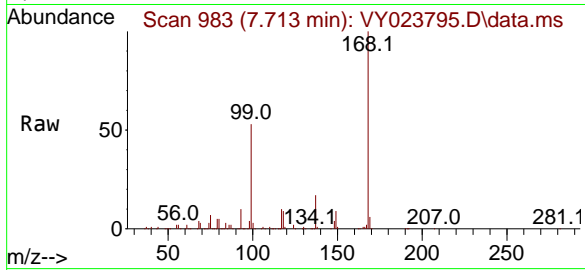




#1
 Pentafluorobenzene
 Concen: 50.000 ug/l
 RT: 7.713 min Scan# 99
 Delta R.T. 0.006 min
 Lab File: VY023795.D
 Acq: 24 Nov 2025 17:12

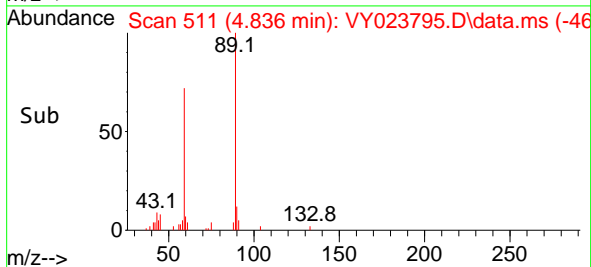
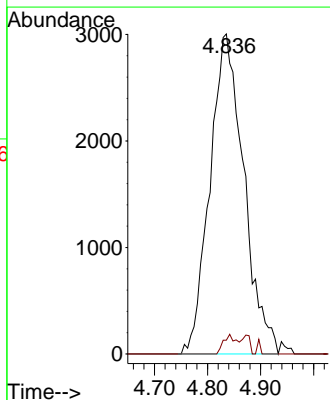
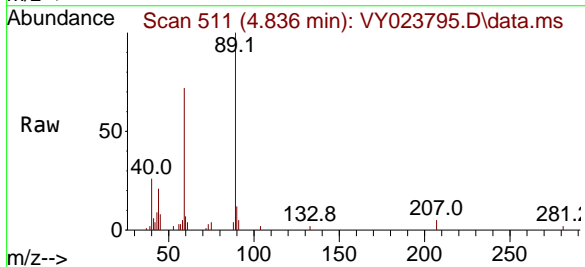
Instrument :
 MSVOA_Y
 ClientSampleId :
 V933

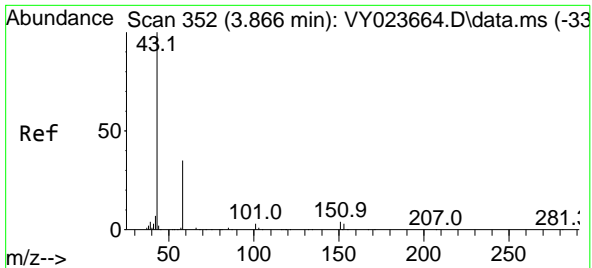
Tgt Ion:168 Resp: 472933
 Ion Ratio Lower Upper
 168 100
 99 52.6 41.0 61.4



#11
 Tert butyl alcohol
 Concen: 51.256 ug/l
 RT: 4.836 min Scan# 511
 Delta R.T. -0.031 min
 Lab File: VY023795.D
 Acq: 24 Nov 2025 17:12

Tgt Ion: 59 Resp: 13333
 Ion Ratio Lower Upper
 59 100
 57 2.4 7.4 11.2#

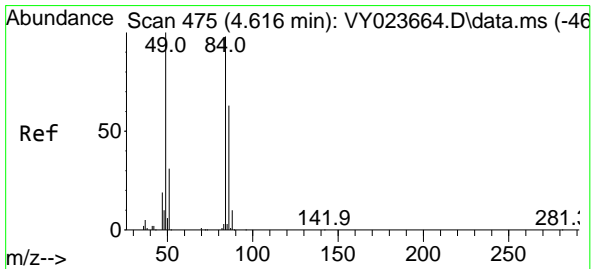
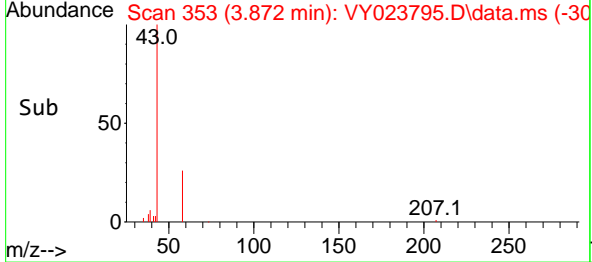
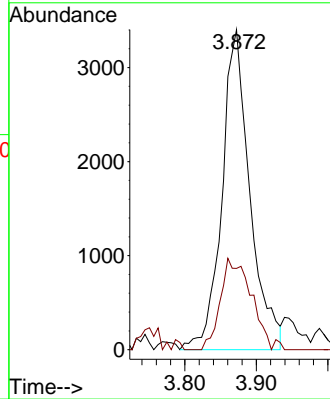
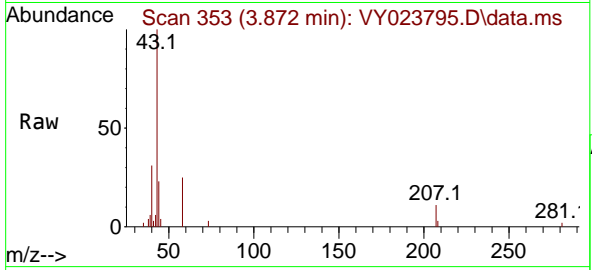




#16
 Acetone
 Concen: 9.229 ug/l
 RT: 3.872 min Scan# 31
 Delta R.T. 0.006 min
 Lab File: VY023795.D
 Acq: 24 Nov 2025 17:12

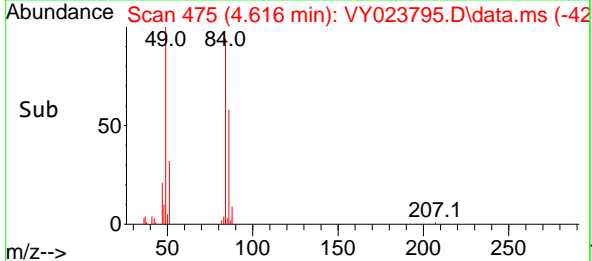
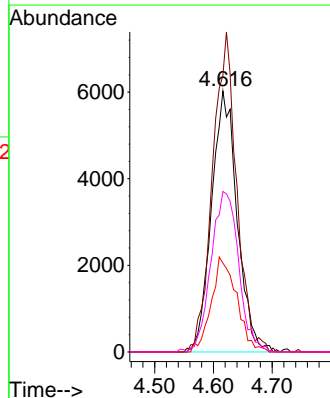
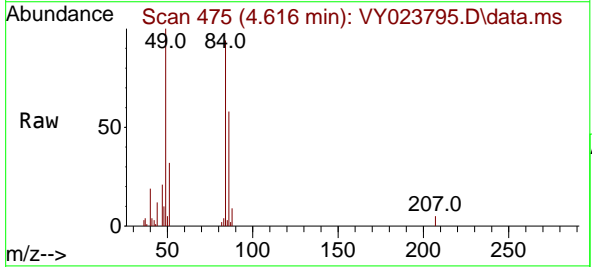
Instrument :
 MSVOA_Y
 ClientSampleId :
 V933

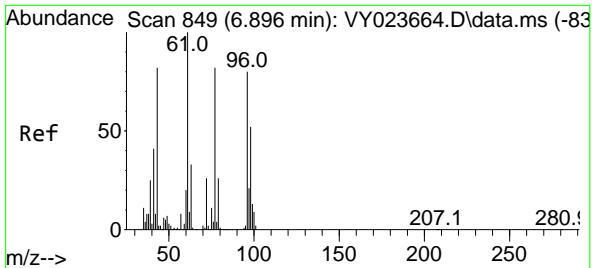
Tgt Ion: 43 Resp: 9255
 Ion Ratio Lower Upper
 43 100
 58 23.2 28.2 42.4#



#20
 Methylene Chloride
 Concen: 3.788 ug/l
 RT: 4.616 min Scan# 475
 Delta R.T. -0.000 min
 Lab File: VY023795.D
 Acq: 24 Nov 2025 17:12

Tgt Ion: 84 Resp: 18338
 Ion Ratio Lower Upper
 84 100
 49 106.0 81.5 122.3
 51 34.0 25.5 38.3
 86 61.5 51.2 76.8

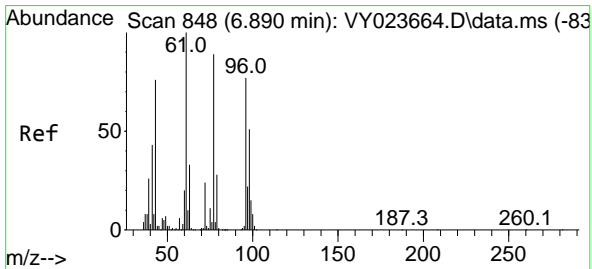
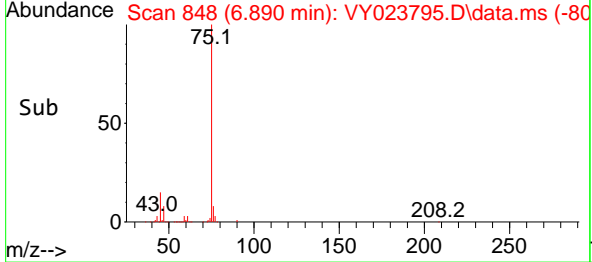
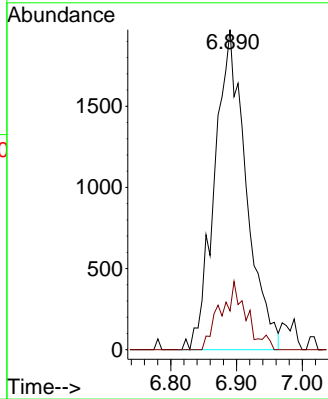
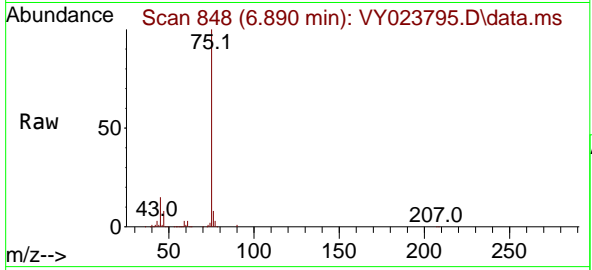




#25
 2-Butanone
 Concen: 5.687 ug/l
 RT: 6.890 min Scan# 847
 Delta R.T. -0.006 min
 Lab File: VY023795.D
 Acq: 24 Nov 2025 17:12

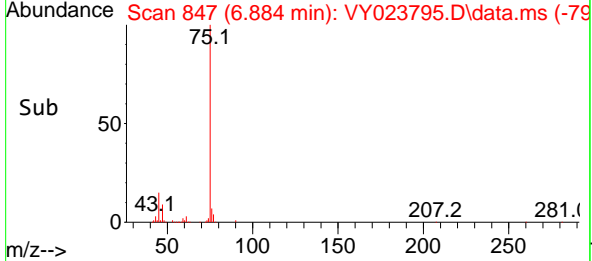
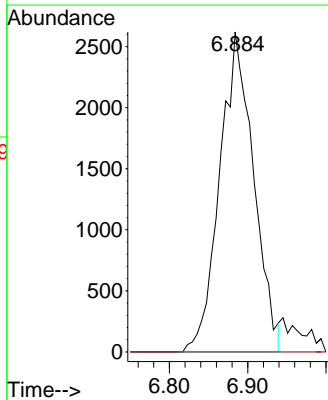
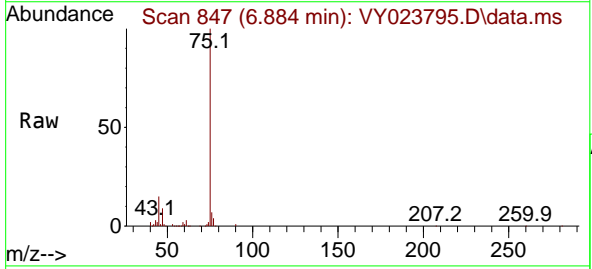
Instrument : MSVOA_Y
 ClientSampleId : V933

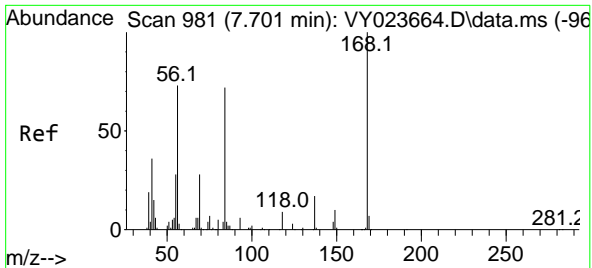
Tgt Ion: 43 Resp: 6594
 Ion Ratio Lower Upper
 43 100
 72 12.1 25.7 38.5#



#26
 2,2-Dichloropropane
 Concen: 1.118 ug/l
 RT: 6.884 min Scan# 847
 Delta R.T. -0.006 min
 Lab File: VY023795.D
 Acq: 24 Nov 2025 17:12

Tgt Ion: 77 Resp: 7850
 Ion Ratio Lower Upper
 77 100
 97 0.0 12.0 36.1#

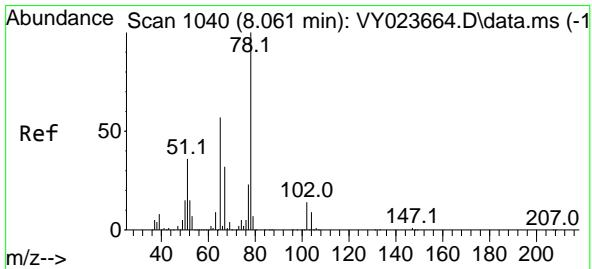
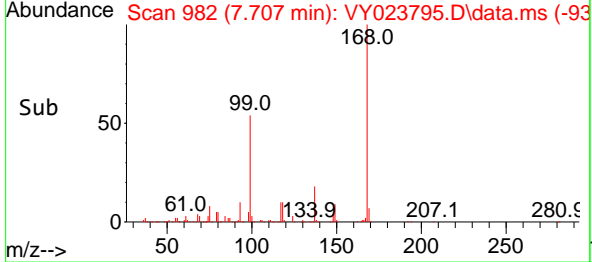
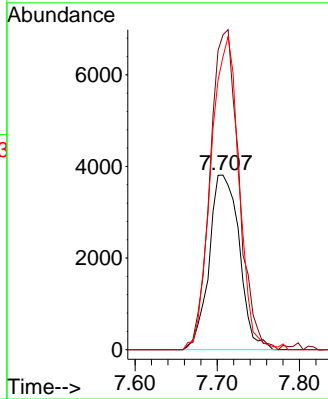
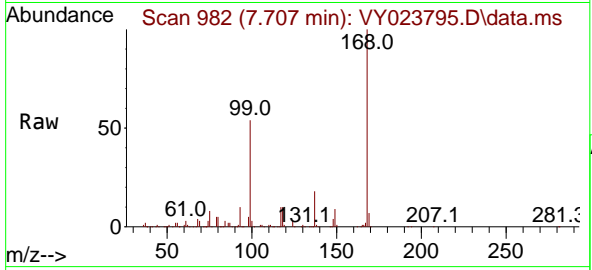




#31
 Cyclohexane
 Concen: 1.459 ug/l
 RT: 7.707 min Scan# 981
 Delta R.T. 0.006 min
 Lab File: VY023795.D
 Acq: 24 Nov 2025 17:12

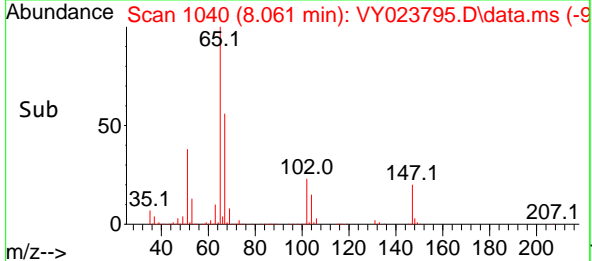
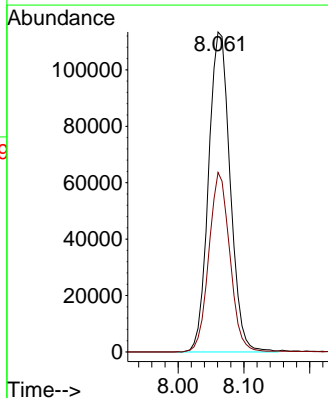
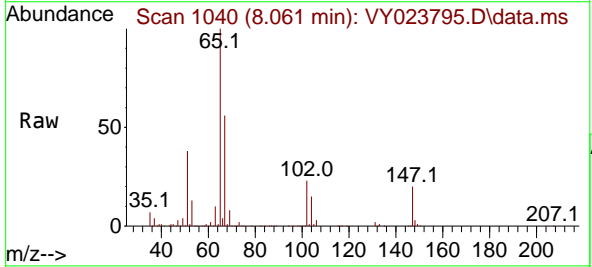
Instrument : MSVOA_Y
 ClientSampleId : V933

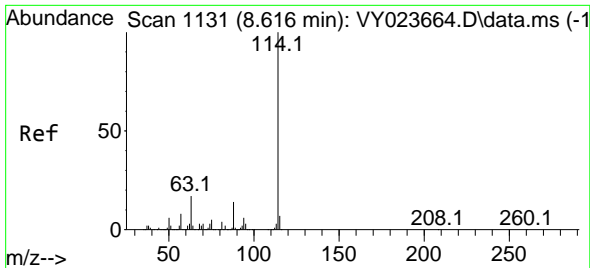
Tgt Ion	Resp	Lower	Upper
56	100		
69	180.4	30.5	45.7#
84	167.7	79.0	118.4#



#33
 1,2-Dichloroethane-d4
 Concen: 64.303 ug/l
 RT: 8.061 min Scan# 1040
 Delta R.T. -0.000 min
 Lab File: VY023795.D
 Acq: 24 Nov 2025 17:12

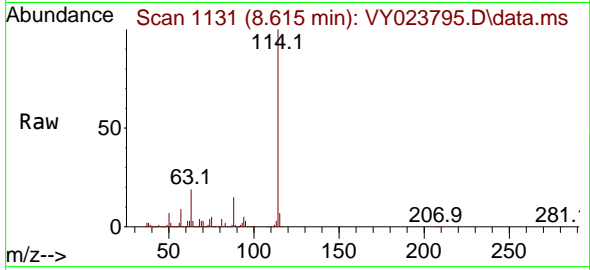
Tgt Ion	Resp	Lower	Upper
65	100		
67	54.4	0.0	107.4



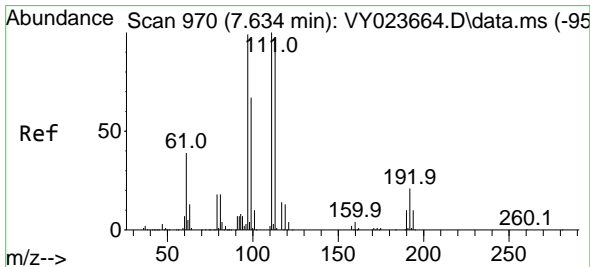
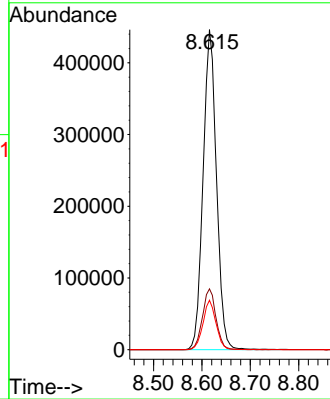
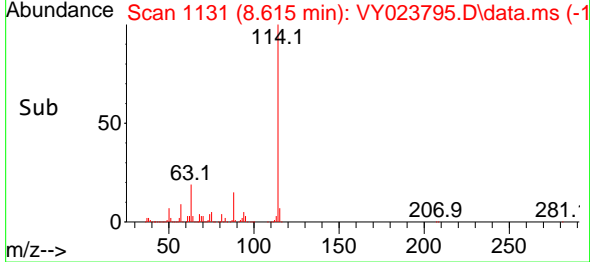


#34
 1,4-Difluorobenzene
 Concen: 50.000 ug/l
 RT: 8.615 min Scan# 1131
 Delta R.T. -0.000 min
 Lab File: VY023795.D
 Acq: 24 Nov 2025 17:12

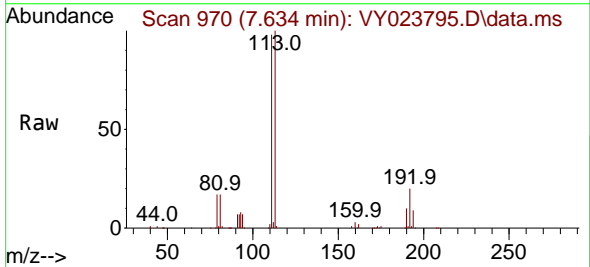
Instrument : MSVOA_Y
 ClientSampleId : V933



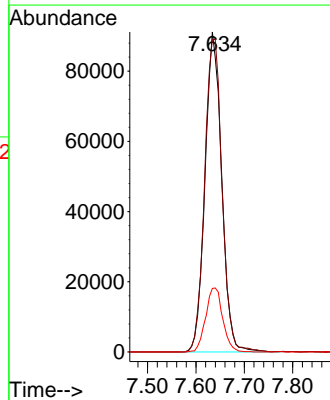
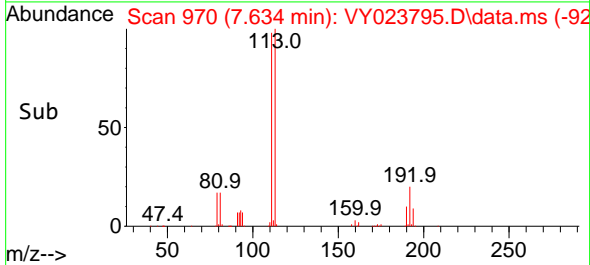
Tgt Ion:114 Resp: 857142
 Ion Ratio Lower Upper
 114 100
 63 19.0 0.0 33.8
 88 15.4 0.0 29.0

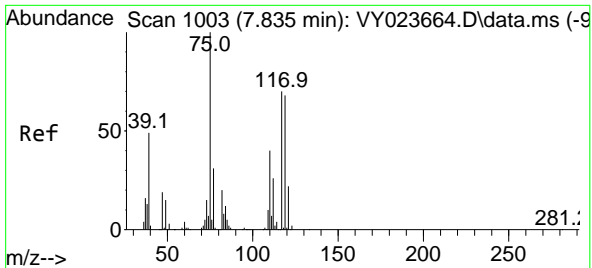


#35
 Dibromofluoromethane
 Concen: 40.792 ug/l
 RT: 7.634 min Scan# 970
 Delta R.T. -0.000 min
 Lab File: VY023795.D
 Acq: 24 Nov 2025 17:12



Tgt Ion:113 Resp: 218507
 Ion Ratio Lower Upper
 113 100
 111 102.0 82.2 123.4
 192 20.5 17.3 25.9

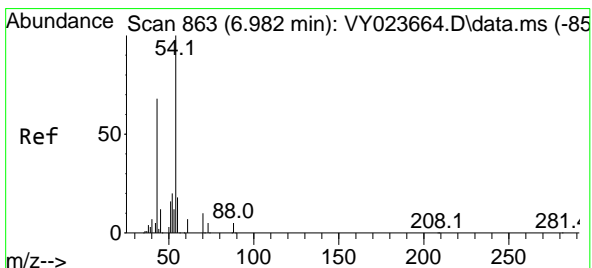
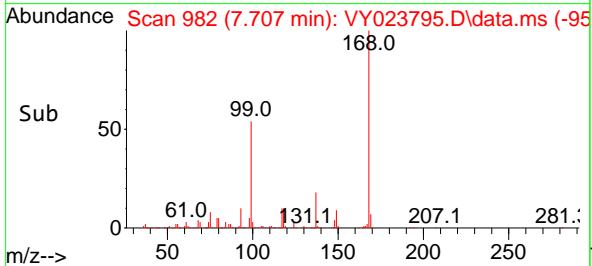
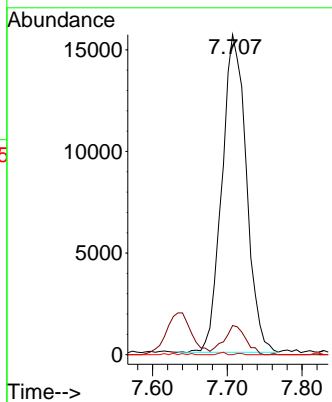
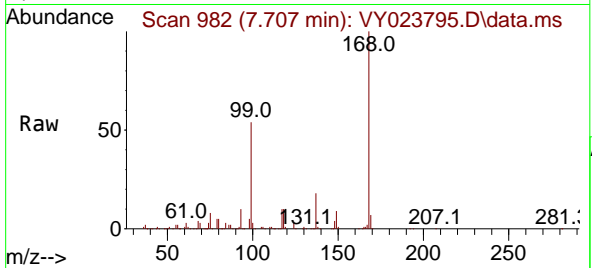




#36
 1,1-Dichloropropene
 Concen: 4.961 ug/l
 RT: 7.707 min Scan# 91
 Delta R.T. -0.128 min
 Lab File: VY023795.D
 Acq: 24 Nov 2025 17:12

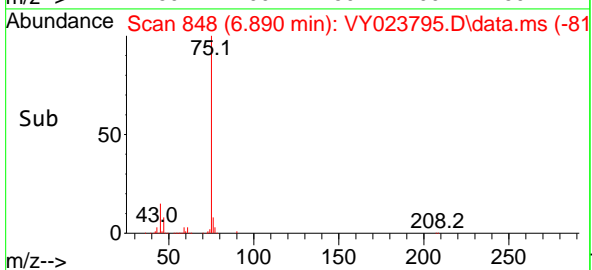
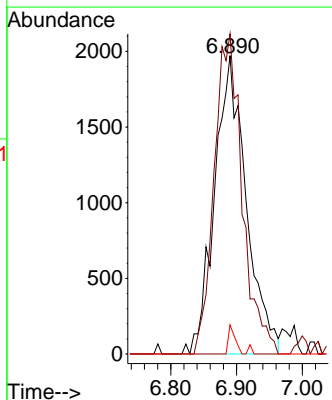
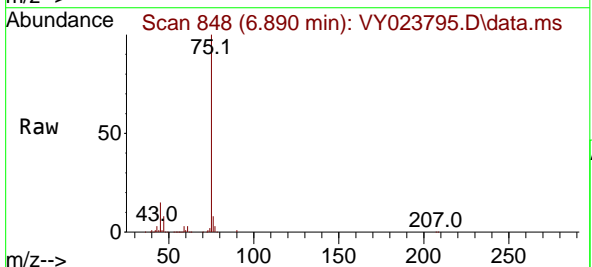
Instrument : MSVOA_Y
 ClientSampleId : V933

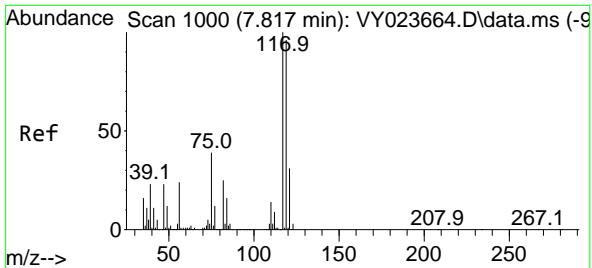
Tgt Ion	Resp	Lower	Upper
75	35513	100	
110	8.2	19.7	59.0#
77	0.2	25.2	37.8#



#37
 Ethyl Acetate
 Concen: 2.380 ug/l
 RT: 6.890 min Scan# 848
 Delta R.T. -0.092 min
 Lab File: VY023795.D
 Acq: 24 Nov 2025 17:12

Tgt Ion	Resp	Lower	Upper
43	6594	100	
61	94.9	12.4	18.6#
70	2.1	9.8	14.8#



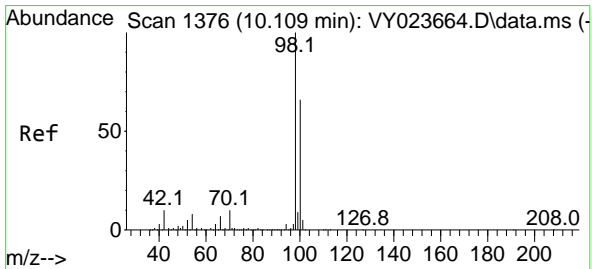
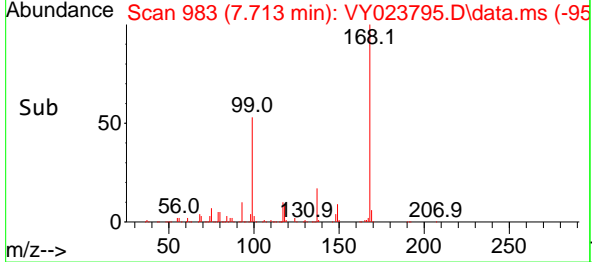
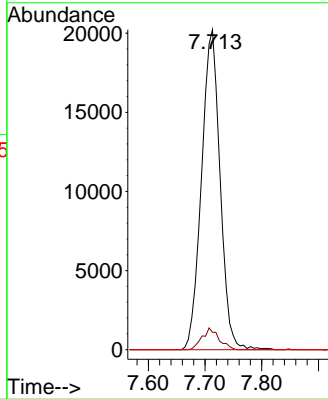
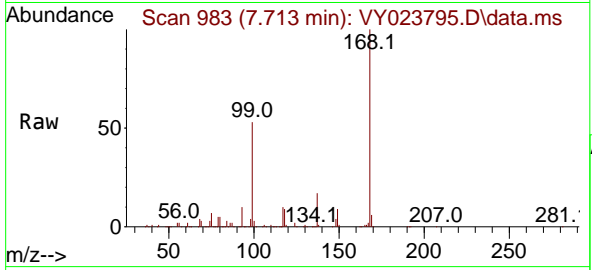


#38
 Carbon Tetrachloride
 Concen: 5.453 ug/l
 RT: 7.713 min Scan# 91
 Delta R.T. -0.104 min
 Lab File: VY023795.D
 Acq: 24 Nov 2025 17:12

Instrument :
 MSVOA_Y
 ClientSampleId :
 V933

Tgt Ion:117 Resp: 45989

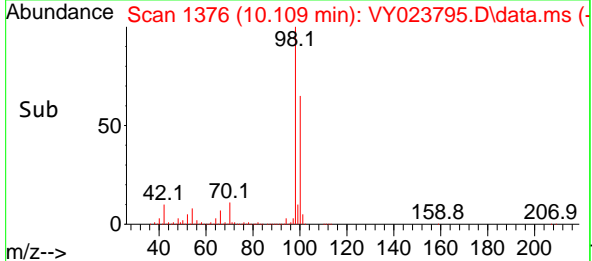
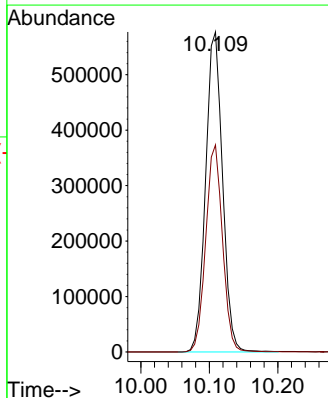
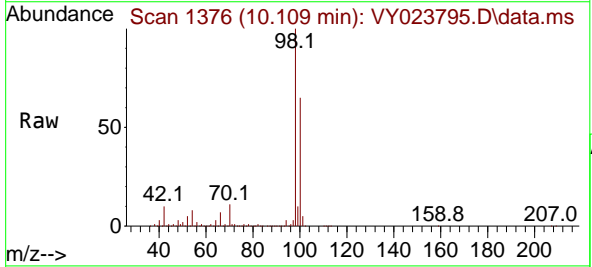
Ion	Ratio	Lower	Upper
117	100		
119	5.4	76.3	114.5#
121	0.0	24.8	37.2#

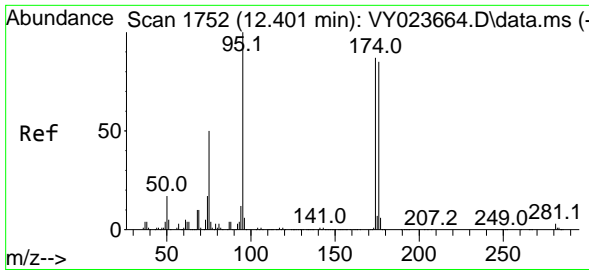


#50
 Toluene-d8
 Concen: 49.702 ug/l
 RT: 10.109 min Scan# 1376
 Delta R.T. -0.000 min
 Lab File: VY023795.D
 Acq: 24 Nov 2025 17:12

Tgt Ion: 98 Resp: 991728

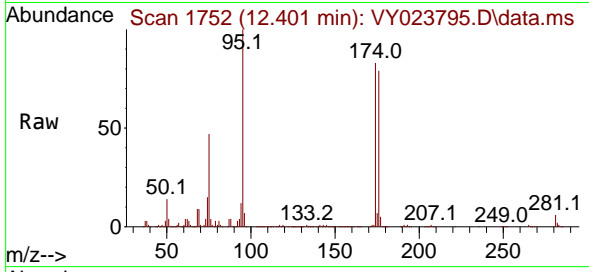
Ion	Ratio	Lower	Upper
98	100		
100	64.2	52.7	79.1





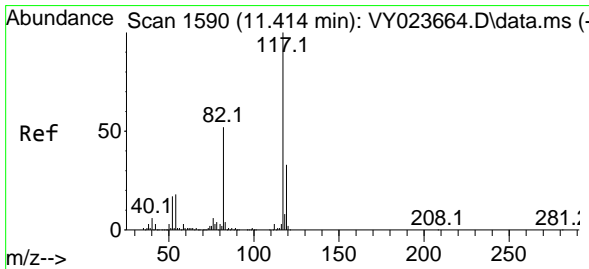
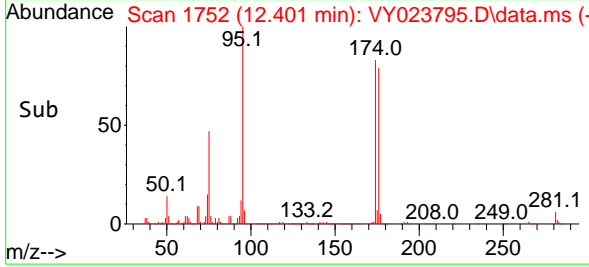
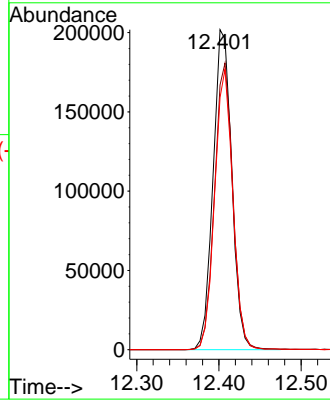
#62
 4-Bromofluorobenzene
 Concen: 49.323 ug/l
 RT: 12.401 min Scan# 11
 Delta R.T. -0.000 min
 Lab File: VY023795.D
 Acq: 24 Nov 2025 17:12

Instrument :
 MSVOA_Y
 ClientSampleId :
 V933

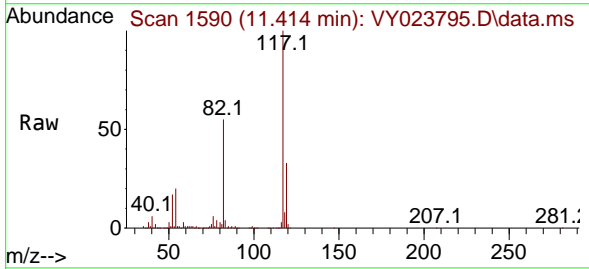


Tgt Ion: 95 Resp: 318272

Ion	Ratio	Lower	Upper
95	100		
174	88.5	0.0	184.8
176	85.1	0.0	181.6

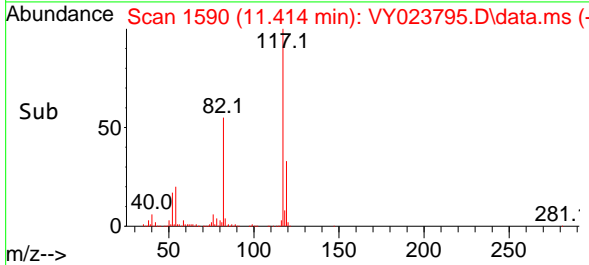
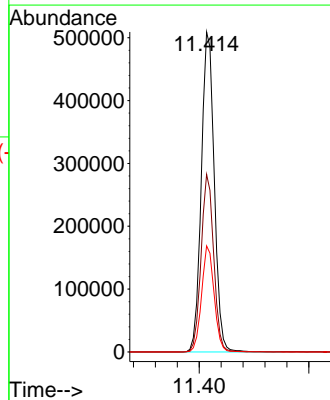


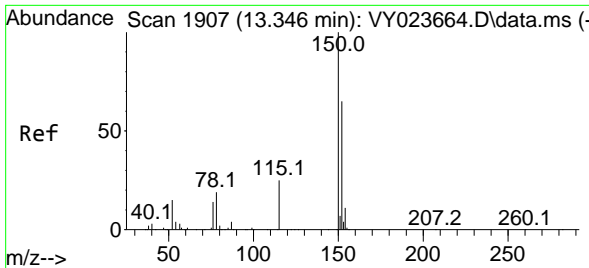
#63
 Chlorobenzene-d5
 Concen: 50.000 ug/l
 RT: 11.414 min Scan# 1590
 Delta R.T. -0.000 min
 Lab File: VY023795.D
 Acq: 24 Nov 2025 17:12



Tgt Ion: 117 Resp: 835519

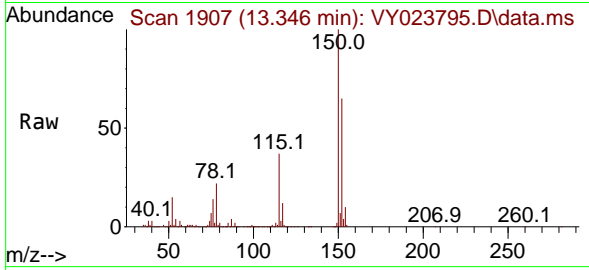
Ion	Ratio	Lower	Upper
117	100		
82	55.5	41.2	61.8
119	33.2	26.2	39.2





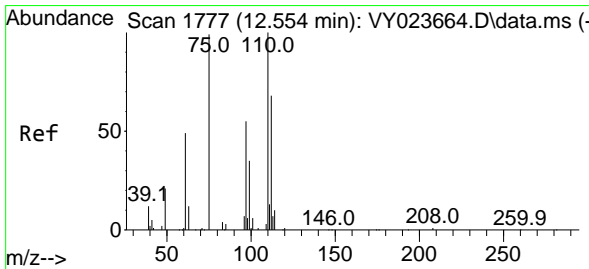
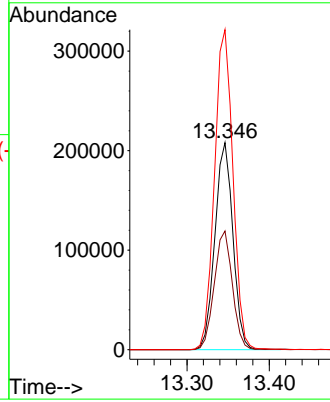
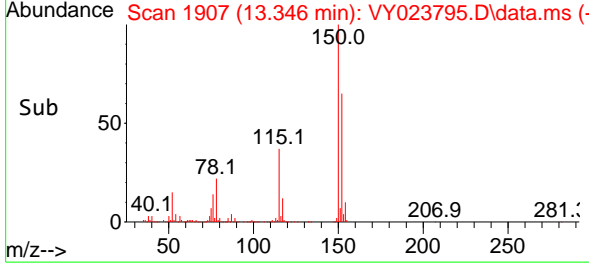
#72
 1,4-Dichlorobenzene-d4
 Concen: 50.000 ug/l
 RT: 13.346 min Scan# 1907
 Delta R.T. -0.000 min
 Lab File: VY023795.D
 Acq: 24 Nov 2025 17:12

Instrument : MSVOA_Y
 ClientSampleId : V933

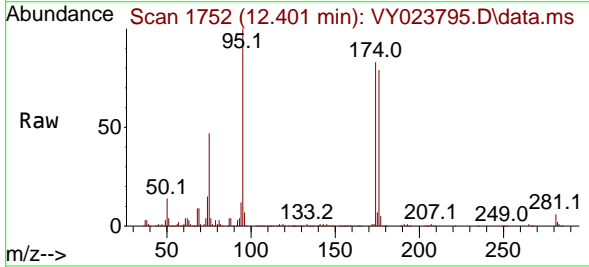


Tgt Ion:152 Resp: 316923

Ion	Ratio	Lower	Upper
152	100		
115	57.7	27.5	82.5
150	158.1	0.0	349.0

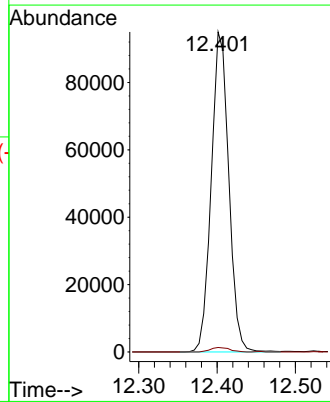
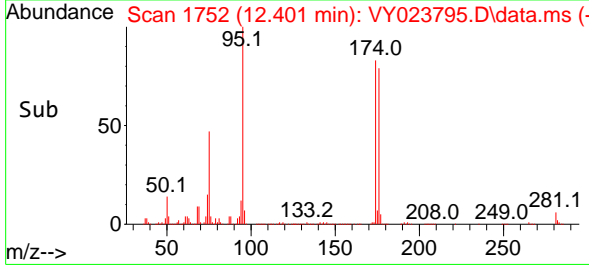


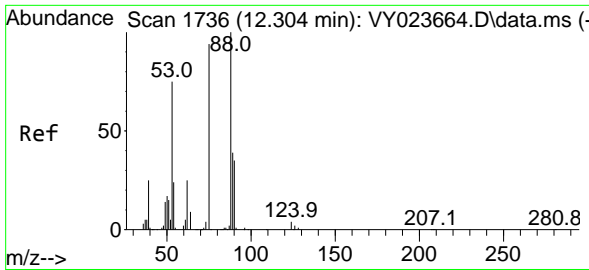
#76
 1,2,3-Trichloropropane
 Concen: 57.414 ug/l
 RT: 12.401 min Scan# 1752
 Delta R.T. -0.153 min
 Lab File: VY023795.D
 Acq: 24 Nov 2025 17:12



Tgt Ion: 75 Resp: 147262

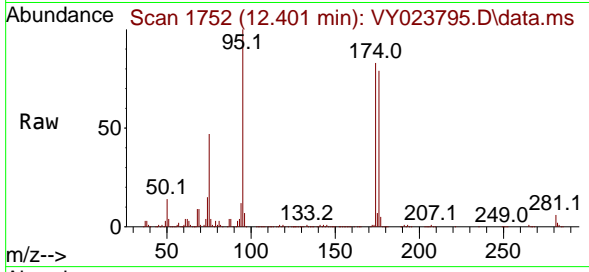
Ion	Ratio	Lower	Upper
75	100		
77	1.5	0.0	0.0#



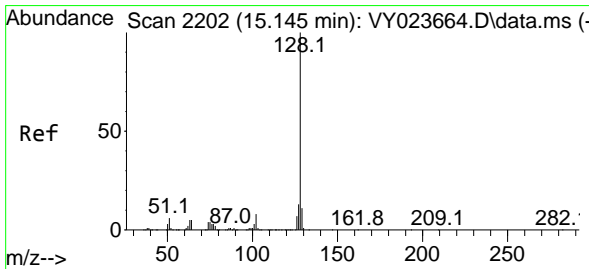
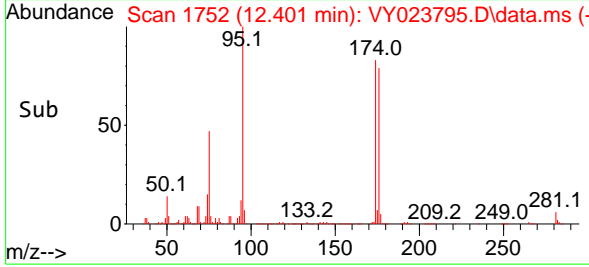
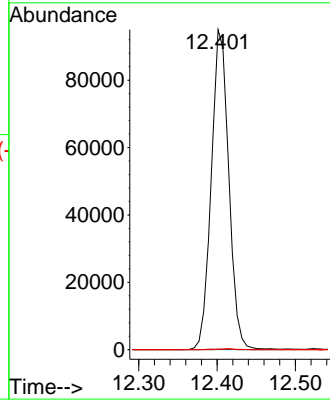


#81
 trans-1,4-Dichloro-2-butene
 Concen: 129.753 ug/l
 RT: 12.401 min Scan# 11
 Delta R.T. 0.097 min
 Lab File: VY023795.D
 Acq: 24 Nov 2025 17:12

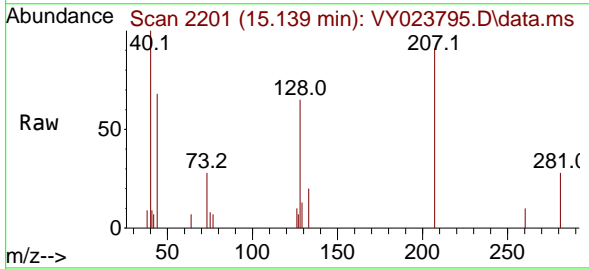
Instrument :
 MSVOA_Y
 ClientSampleId :
 V933



Tgt Ion: 75 Resp: 147262
 Ion Ratio Lower Upper
 75 100
 53 0.2 69.6 104.4#
 89 0.3 38.2 57.4#



#95
 Naphthalene
 Concen: 5.351 ug/l
 RT: 15.139 min Scan# 2201
 Delta R.T. -0.006 min
 Lab File: VY023795.D
 Acq: 24 Nov 2025 17:12



Tgt Ion: 128 Resp: 929
 Ion Ratio Lower Upper
 128 100
 127 4.5 10.5 15.7#
 129 4.1 8.8 13.2#

