

Data Path : Z:\voasrv\HPCHEM1\MSVOA_Y\Data\VY112425\
 Data File : VY023796.D
 Acq On : 24 Nov 2025 17:35
 Operator : SY/MD
 Sample : Q3709-01
 Misc : 6.58g/5.0mL/MSVOA_Y/SOIL/A
 ALS Vial : 12 Sample Multiplier: 1

Instrument :
 MSVOA_Y
 ClientSampleId :
 LI-1-112125

Quant Time: Nov 26 02:14:28 2025
 Quant Method : Z:\voasrv\HPCHEM1\MSVOA_Y\methods\82Y110425S.M
 Quant Title : SW846 8260
 QLast Update : Wed Nov 05 04:41:50 2025
 Response via : Initial Calibration

Compound	R.T.	QIon	Response	Conc	Units	Dev(Min)

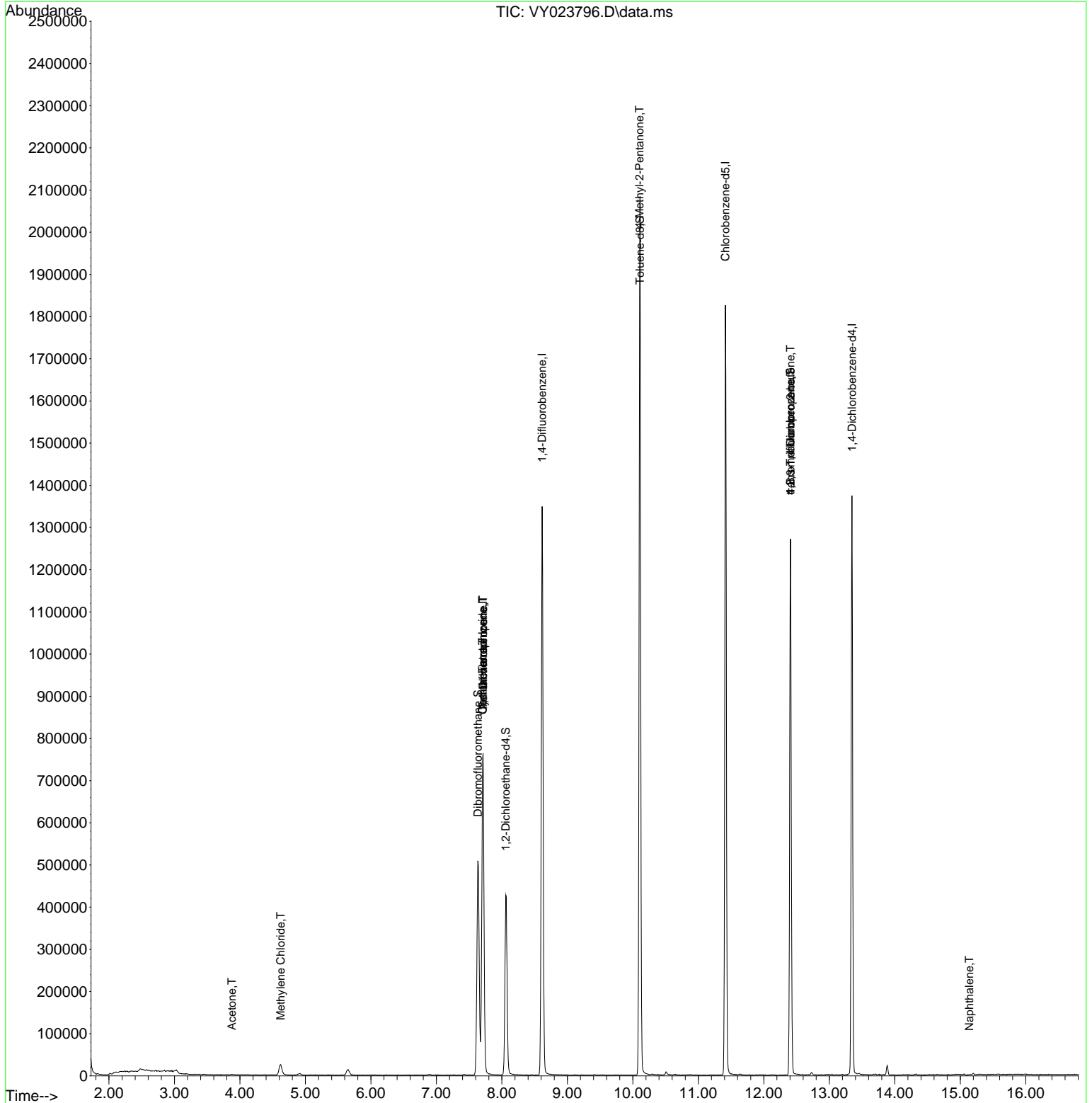
Internal Standards						
1) Pentafluorobenzene	7.713	168	607526	50.000	ug/l	0.00
34) 1,4-Difluorobenzene	8.615	114	1144325	50.000	ug/l	0.00
63) Chlorobenzene-d5	11.414	117	983481	50.000	ug/l	0.00
72) 1,4-Dichlorobenzene-d4	13.346	152	351645	50.000	ug/l	0.00
System Monitoring Compounds						
33) 1,2-Dichloroethane-d4	8.060	65	341289	65.857	ug/l	0.00
Spiked Amount	50.000	Range	50 - 163	Recovery	=	131.720%
35) Dibromofluoromethane	7.634	113	372021	52.022	ug/l	0.00
Spiked Amount	50.000	Range	54 - 147	Recovery	=	104.040%
50) Toluene-d8	10.109	98	1349240	50.649	ug/l	0.00
Spiked Amount	50.000	Range	58 - 134	Recovery	=	101.300%
62) 4-Bromofluorobenzene	12.407	95	364610	42.324	ug/l	0.00
Spiked Amount	50.000	Range	30 - 143	Recovery	=	84.640%
Target Compounds						
						Qvalue
16) Acetone	3.878	43	1626	1.262	ug/l	94
20) Methylene Chloride	4.622	84	19131	3.076	ug/l	95
31) Cyclohexane	7.707	56	12464	1.459	ug/l #	1
36) 1,1-Dichloropropene	7.713	75	46195	4.834	ug/l #	47
38) Carbon Tetrachloride	7.707	117	58788	5.221	ug/l #	17
51) 4-Methyl-2-Pentanone	10.103	43	5305	1.435	ug/l #	1
76) 1,2,3-Trichloropropane	12.407	75	182118	63.993	ug/l #	100
81) trans-1,4-Dichloro-2-b...	12.407	75	182118	144.621	ug/l #	14
95) Naphthalene	15.138	128	681	5.321	ug/l #	83

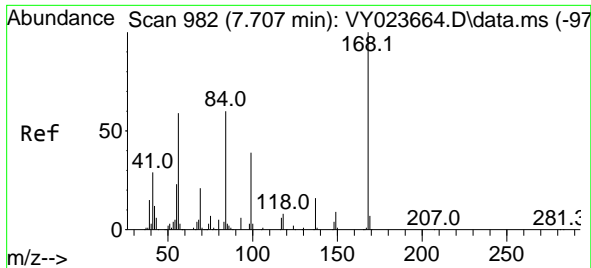
(#) = qualifier out of range (m) = manual integration (+) = signals summed

Data Path : Z:\voasrv\HPCHEM1\MSVOA_Y\Data\VY112425\
 Data File : VY023796.D
 Acq On : 24 Nov 2025 17:35
 Operator : SY/MD
 Sample : Q3709-01
 Misc : 6.58g/5.0mL/MSVOA_Y/SOIL/A
 ALS Vial : 12 Sample Multiplier: 1

Instrument :
 MSVOA_Y
 ClientSampleId :
 LI-1-112125

Quant Time: Nov 26 02:14:28 2025
 Quant Method : Z:\voasrv\HPCHEM1\MSVOA_Y\methods\82Y110425S.M
 Quant Title : SW846 8260
 QLast Update : Wed Nov 05 04:41:50 2025
 Response via : Initial Calibration

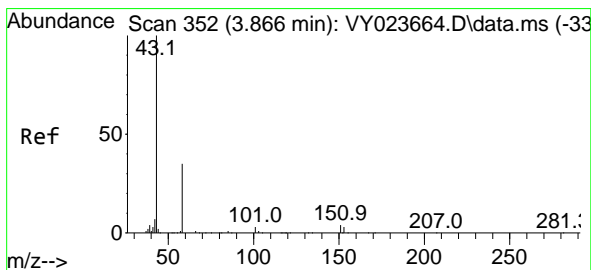
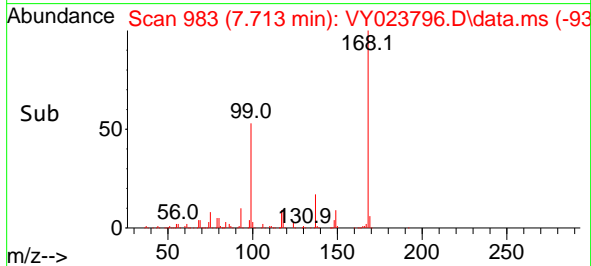
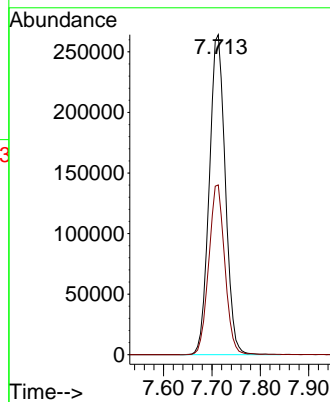
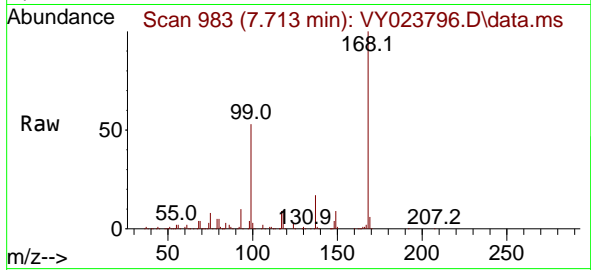




#1
 Pentafluorobenzene
 Concen: 50.000 ug/l
 RT: 7.713 min Scan# 91
 Delta R.T. 0.006 min
 Lab File: VY023796.D
 Acq: 24 Nov 2025 17:35

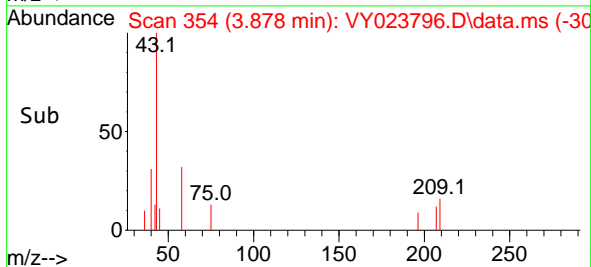
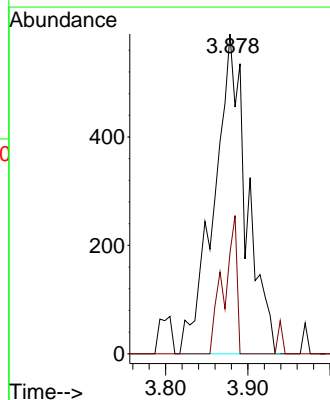
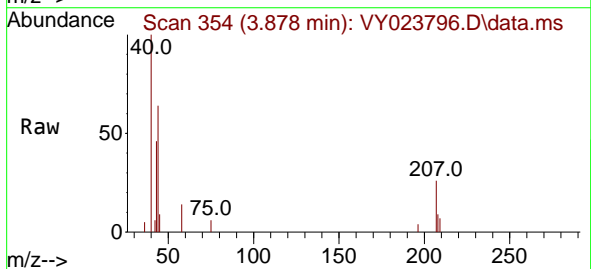
Instrument :
 MSVOA_Y
 ClientSampleId :
 LI-1-112125

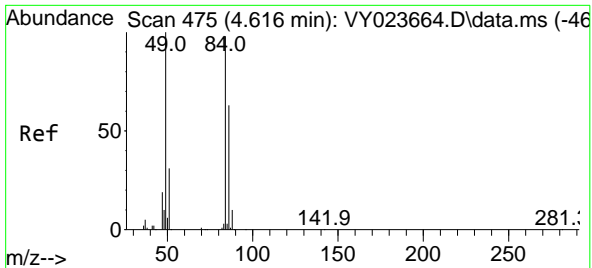
Tgt Ion:168 Resp: 607526
 Ion Ratio Lower Upper
 168 100
 99 53.1 41.0 61.4



#16
 Acetone
 Concen: 1.262 ug/l
 RT: 3.878 min Scan# 354
 Delta R.T. 0.012 min
 Lab File: VY023796.D
 Acq: 24 Nov 2025 17:35

Tgt Ion: 43 Resp: 1626
 Ion Ratio Lower Upper
 43 100
 58 31.5 28.2 42.4



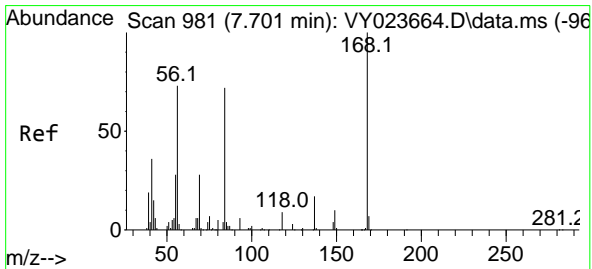
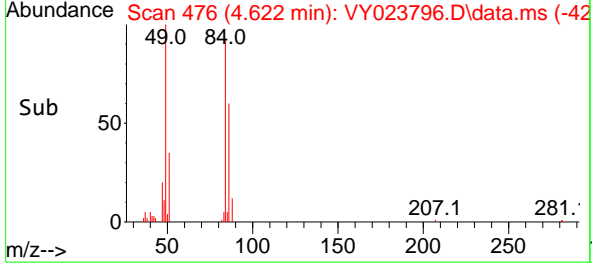
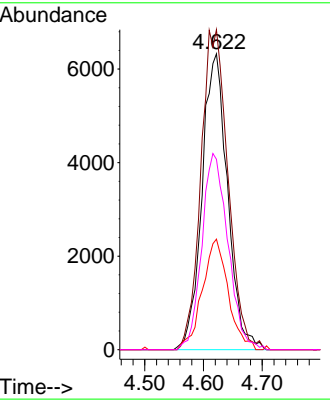
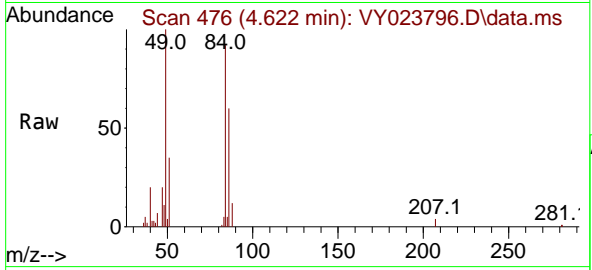


#20
 Methylene Chloride
 Concen: 3.076 ug/l
 RT: 4.622 min Scan# 41
 Delta R.T. 0.006 min
 Lab File: VY023796.D
 Acq: 24 Nov 2025 17:35

Instrument : MSVOA_Y
 ClientSampleId : LI-1-112125

Tgt Ion: 84 Resp: 19131

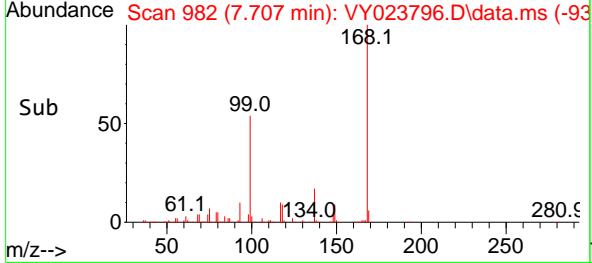
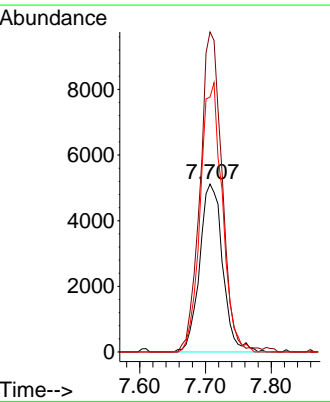
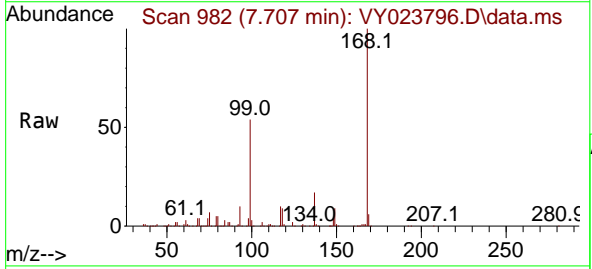
Ion	Ratio	Lower	Upper
84	100		
49	108.2	81.5	122.3
51	37.4	25.5	38.3
86	64.4	51.2	76.8

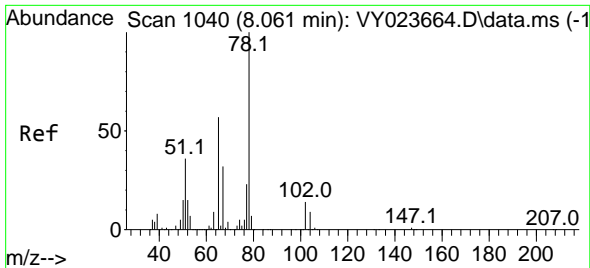


#31
 Cyclohexane
 Concen: 1.459 ug/l
 RT: 7.707 min Scan# 982
 Delta R.T. 0.006 min
 Lab File: VY023796.D
 Acq: 24 Nov 2025 17:35

Tgt Ion: 56 Resp: 12464

Ion	Ratio	Lower	Upper
56	100		
69	190.7	30.5	45.7#
84	151.9	79.0	118.4#

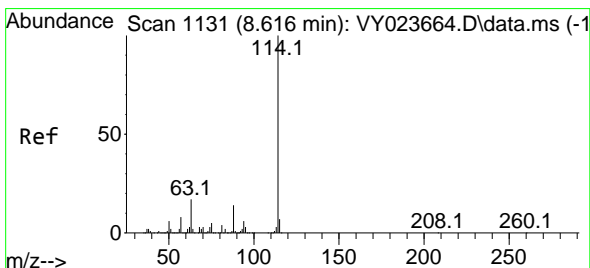
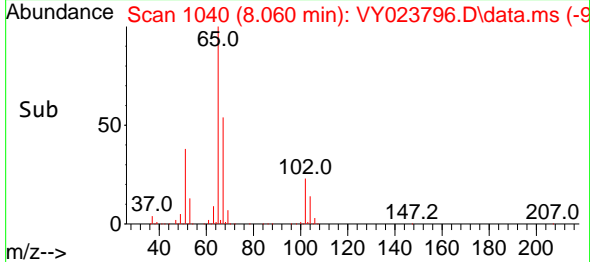
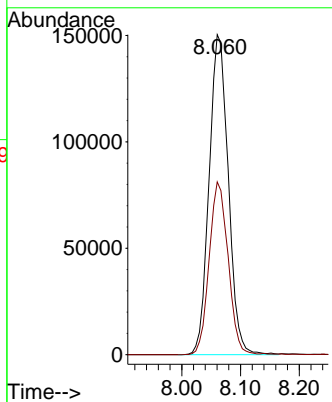
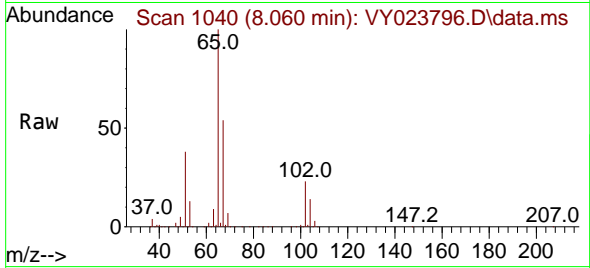




#33
 1,2-Dichloroethane-d4
 Concen: 65.857 ug/l
 RT: 8.060 min Scan# 1040
 Delta R.T. -0.000 min
 Lab File: VY023796.D
 Acq: 24 Nov 2025 17:35

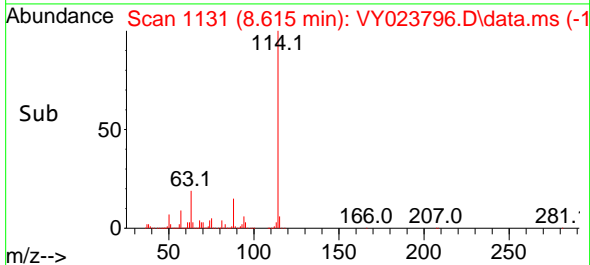
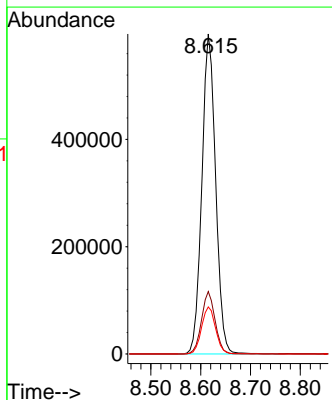
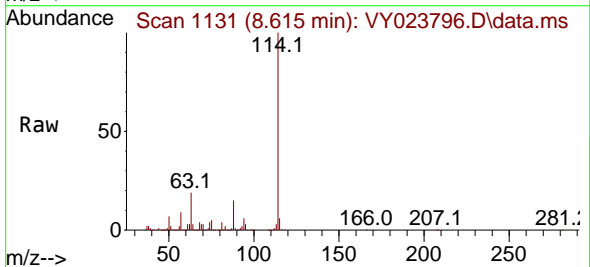
Instrument : MSVOA_Y
 ClientSampleId : LI-1-112125

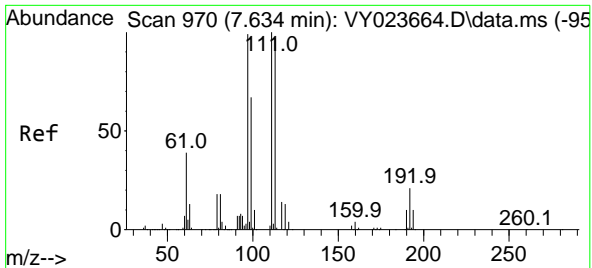
Tgt Ion: 65 Resp: 341289
 Ion Ratio Lower Upper
 65 100
 67 53.2 0.0 107.4



#34
 1,4-Difluorobenzene
 Concen: 50.000 ug/l
 RT: 8.615 min Scan# 1131
 Delta R.T. -0.000 min
 Lab File: VY023796.D
 Acq: 24 Nov 2025 17:35

Tgt Ion:114 Resp: 1144325
 Ion Ratio Lower Upper
 114 100
 63 19.5 0.0 33.8
 88 14.7 0.0 29.0



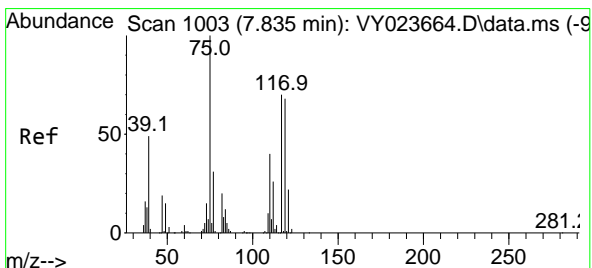
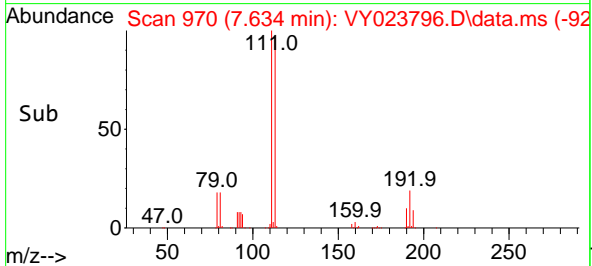
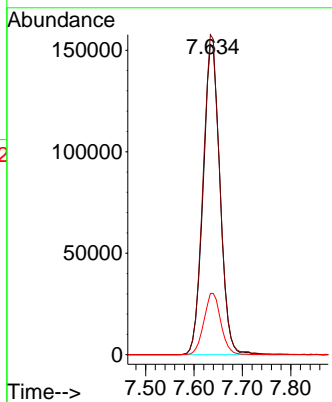
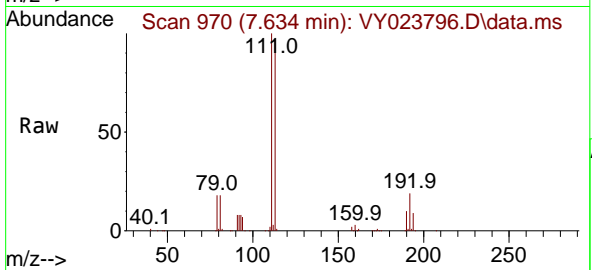


#35
 Dibromofluoromethane
 Concen: 52.022 ug/l
 RT: 7.634 min Scan# 91
 Delta R.T. -0.000 min
 Lab File: VY023796.D
 Acq: 24 Nov 2025 17:35

Instrument : MSVOA_Y
 ClientSampleId : LI-1-112125

Tgt Ion:113 Resp: 372021

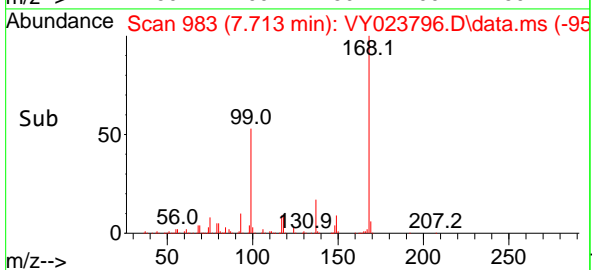
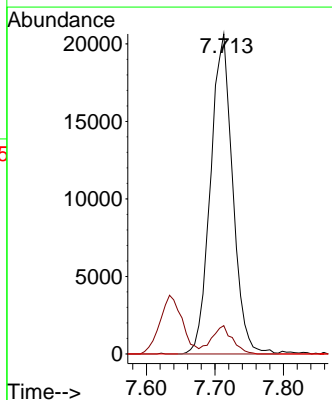
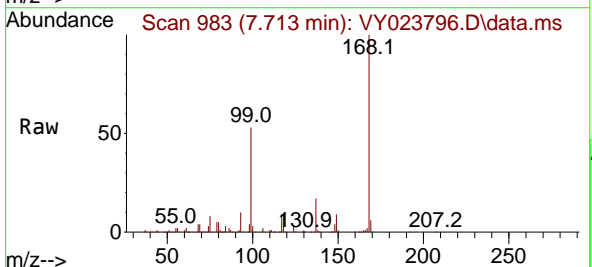
Ion	Ratio	Lower	Upper
113	100		
111	102.1	82.2	123.4
192	19.8	17.3	25.9

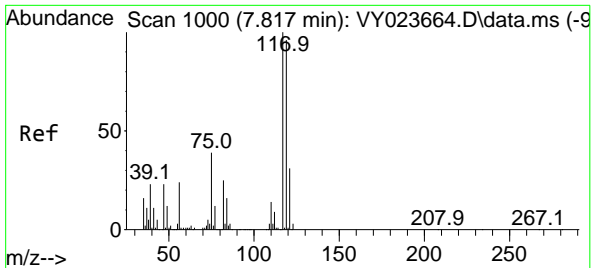


#36
 1,1-Dichloropropene
 Concen: 4.834 ug/l
 RT: 7.713 min Scan# 983
 Delta R.T. -0.122 min
 Lab File: VY023796.D
 Acq: 24 Nov 2025 17:35

Tgt Ion: 75 Resp: 46195

Ion	Ratio	Lower	Upper
75	100		
110	8.3	19.7	59.0#
77	0.0	25.2	37.8#

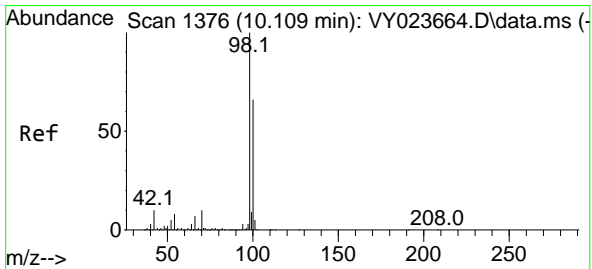
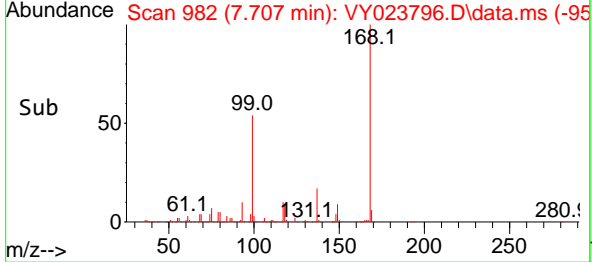
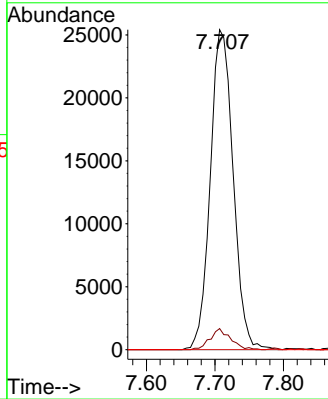
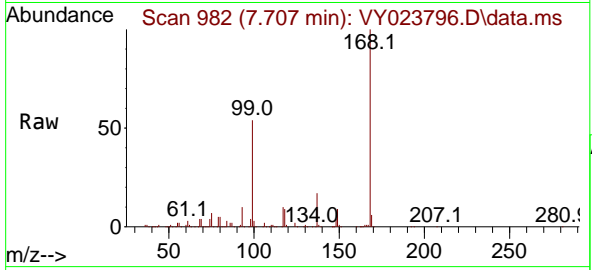




#38
 Carbon Tetrachloride
 Concen: 5.221 ug/l
 RT: 7.707 min Scan# 91
 Delta R.T. -0.110 min
 Lab File: VY023796.D
 Acq: 24 Nov 2025 17:35

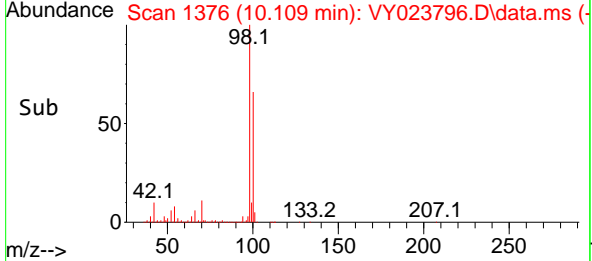
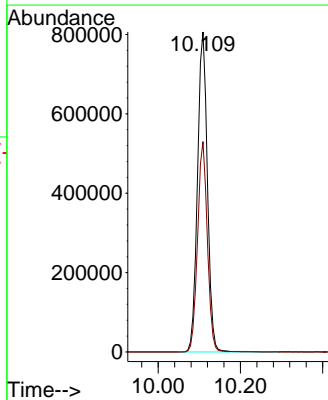
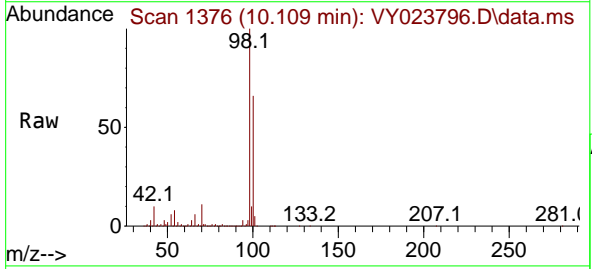
Instrument :
 MSVOA_Y
 ClientSampleId :
 LI-1-112125

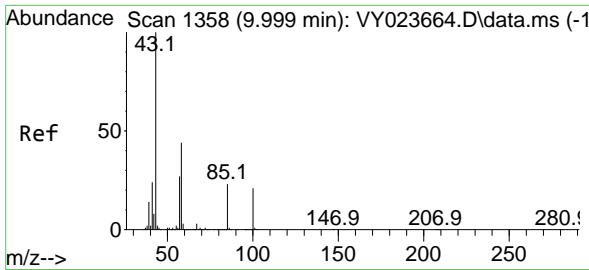
Tgt Ion:117 Resp: 58788
 Ion Ratio Lower Upper
 117 100
 119 6.6 76.3 114.5#
 121 0.0 24.8 37.2#



#50
 Toluene-d8
 Concen: 50.649 ug/l
 RT: 10.109 min Scan# 1376
 Delta R.T. -0.000 min
 Lab File: VY023796.D
 Acq: 24 Nov 2025 17:35

Tgt Ion: 98 Resp: 1349240
 Ion Ratio Lower Upper
 98 100
 100 64.8 52.7 79.1

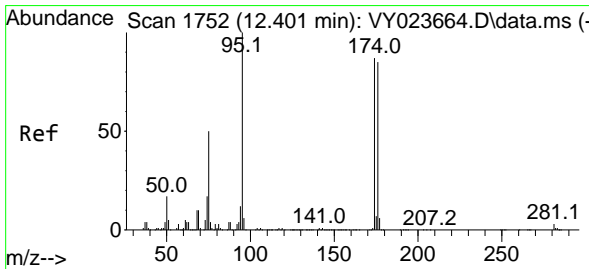
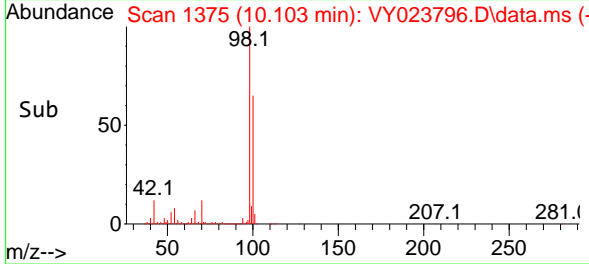
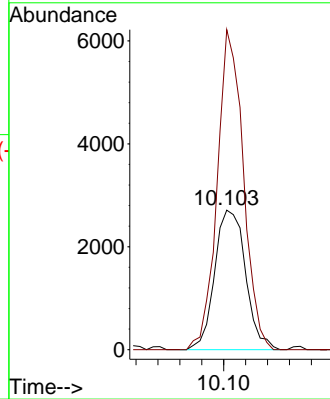
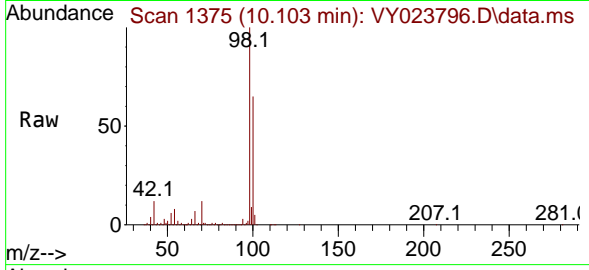




#51
 4-Methyl-2-Pentanone
 Concen: 1.435 ug/l
 RT: 10.103 min Scan# 11
 Delta R.T. 0.103 min
 Lab File: VY023796.D
 Acq: 24 Nov 2025 17:35

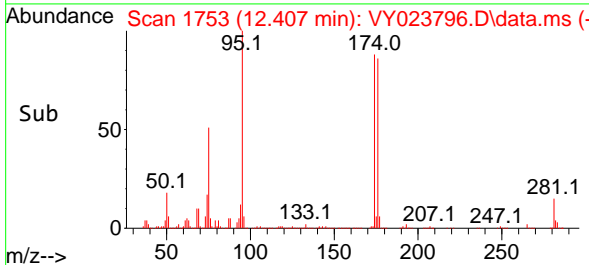
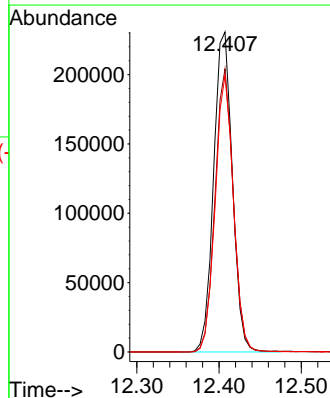
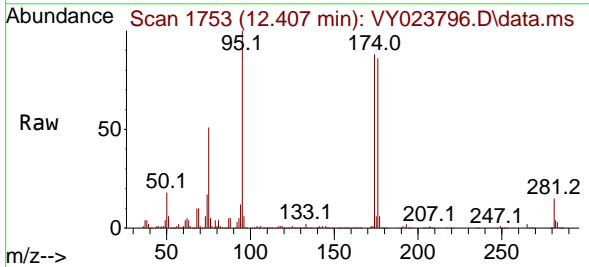
Instrument : MSVOA_Y
 ClientSampleId : LI-1-112125

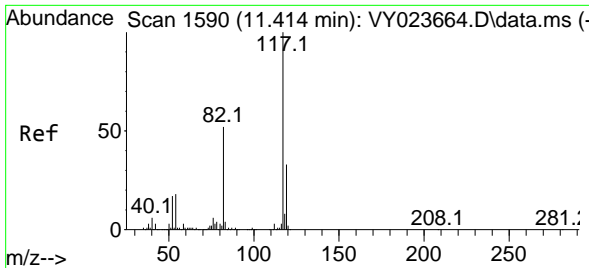
Tgt Ion: 43 Resp: 5305
 Ion Ratio Lower Upper
 43 100
 58 194.3 34.8 52.2#



#62
 4-Bromofluorobenzene
 Concen: 42.324 ug/l
 RT: 12.407 min Scan# 1753
 Delta R.T. 0.006 min
 Lab File: VY023796.D
 Acq: 24 Nov 2025 17:35

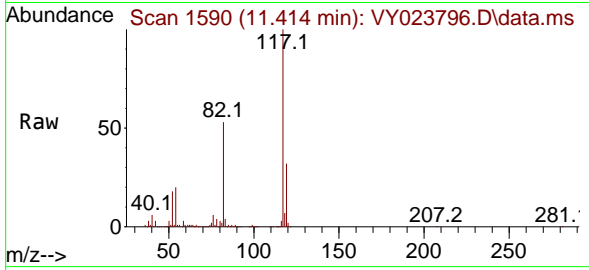
Tgt Ion: 95 Resp: 364610
 Ion Ratio Lower Upper
 95 100
 174 86.2 0.0 184.8
 176 84.1 0.0 181.6





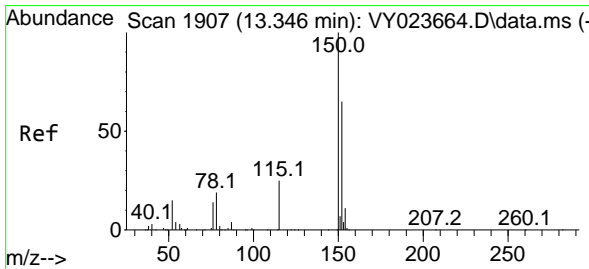
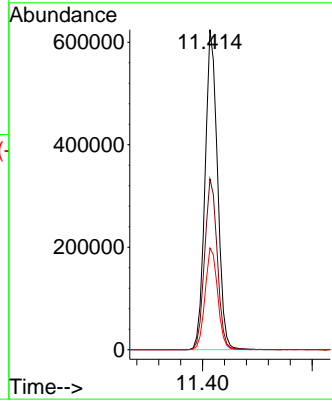
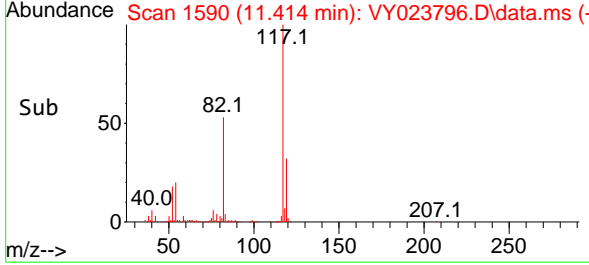
#63
 Chlorobenzene-d5
 Concen: 50.000 ug/l
 RT: 11.414 min Scan# 11
 Delta R.T. -0.000 min
 Lab File: VY023796.D
 Acq: 24 Nov 2025 17:35

Instrument : MSVOA_Y
 ClientSampleId : LI-1-112125

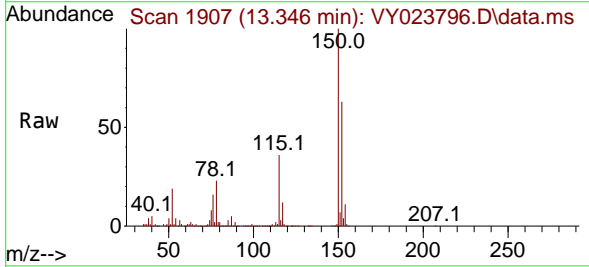


Tgt Ion:117 Resp: 983481

Ion	Ratio	Lower	Upper
117	100		
82	53.4	41.2	61.8
119	31.8	26.2	39.2

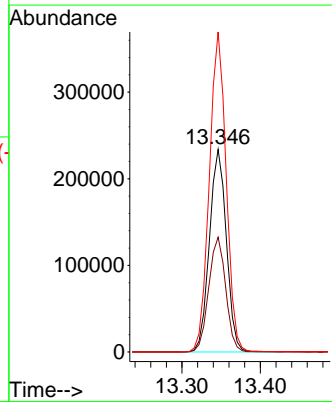
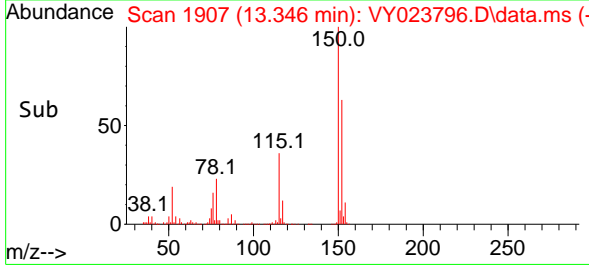


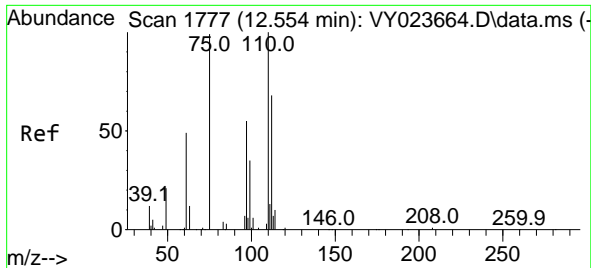
#72
 1,4-Dichlorobenzene-d4
 Concen: 50.000 ug/l
 RT: 13.346 min Scan# 1907
 Delta R.T. -0.000 min
 Lab File: VY023796.D
 Acq: 24 Nov 2025 17:35



Tgt Ion:152 Resp: 351645

Ion	Ratio	Lower	Upper
152	100		
115	56.8	27.5	82.5
150	156.8	0.0	349.0

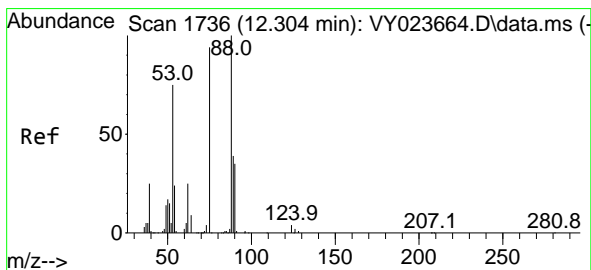
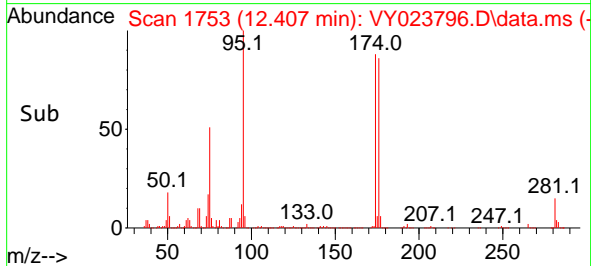
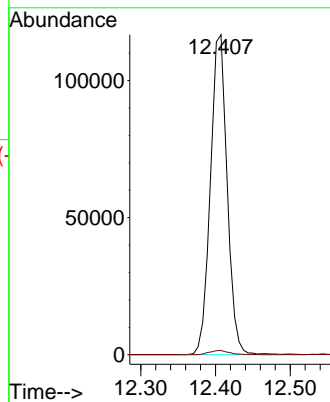
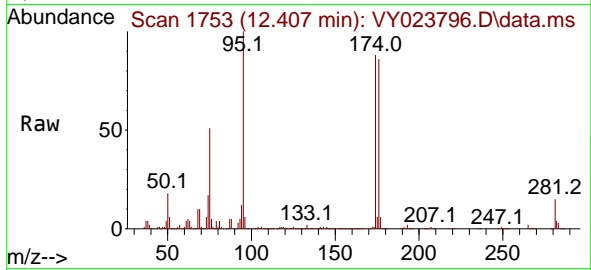




#76
 1,2,3-Trichloropropane
 Concen: 63.993 ug/l
 RT: 12.407 min Scan# 1753
 Delta R.T. -0.147 min
 Lab File: VY023796.D
 Acq: 24 Nov 2025 17:35

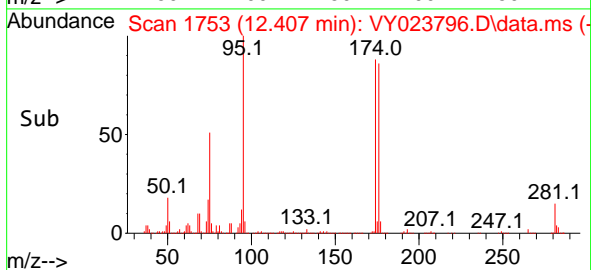
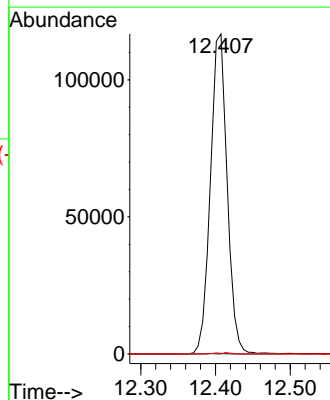
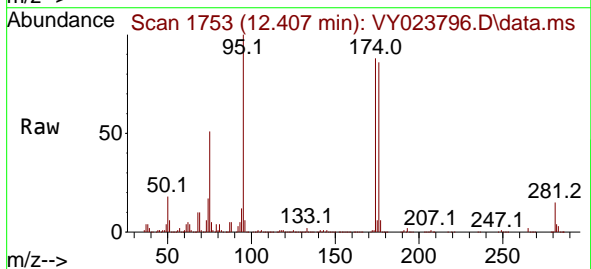
Instrument : MSVOA_Y
 ClientSampleId : LI-1-112125

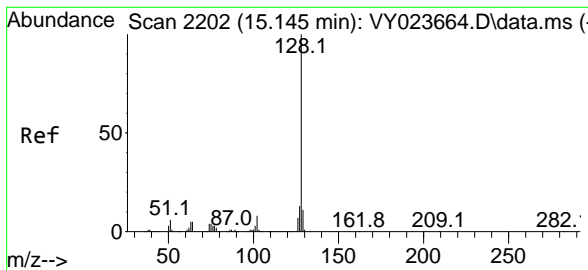
Tgt Ion: 75 Resp: 182118
 Ion Ratio Lower Upper
 75 100
 77 1.5 0.0 0.0#



#81
 trans-1,4-Dichloro-2-butene
 Concen: 144.621 ug/l
 RT: 12.407 min Scan# 1753
 Delta R.T. 0.103 min
 Lab File: VY023796.D
 Acq: 24 Nov 2025 17:35

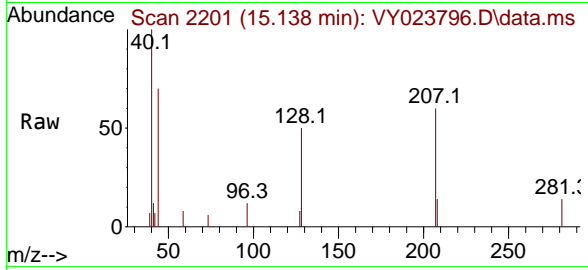
Tgt Ion: 75 Resp: 182118
 Ion Ratio Lower Upper
 75 100
 53 0.2 69.6 104.4#
 89 0.2 38.2 57.4#





#95
 Naphthalene
 Concen: 5.321 ug/l
 RT: 15.138 min Scan# 21
 Delta R.T. -0.006 min
 Lab File: VY023796.D
 Acq: 24 Nov 2025 17:35

Instrument : MSVOA_Y
 ClientSampleId : LI-1-112125



Tgt Ion:128 Resp: 681

Ion	Ratio	Lower	Upper
128	100		
127	10.3	10.5	15.7#
129	0.0	8.8	13.2#

