

Data Path : Z:\voasrv\HPCHEM1\MSVOA_Y\Data\VY112425\
 Data File : VY023797.D
 Acq On : 24 Nov 2025 17:59
 Operator : SY/MD
 Sample : Q3712-01
 Misc : 7.11g/5.0mL/MSVOA_Y/SOIL/A
 ALS Vial : 13 Sample Multiplier: 1

Instrument :
 MSVOA_Y
ClientSampleId :
 JC-03-11212025

Quant Time: Nov 26 02:14:49 2025
 Quant Method : Z:\voasrv\HPCHEM1\MSVOA_Y\methods\82Y110425S.M
 Quant Title : SW846 8260
 QLast Update : Wed Nov 05 04:41:50 2025
 Response via : Initial Calibration

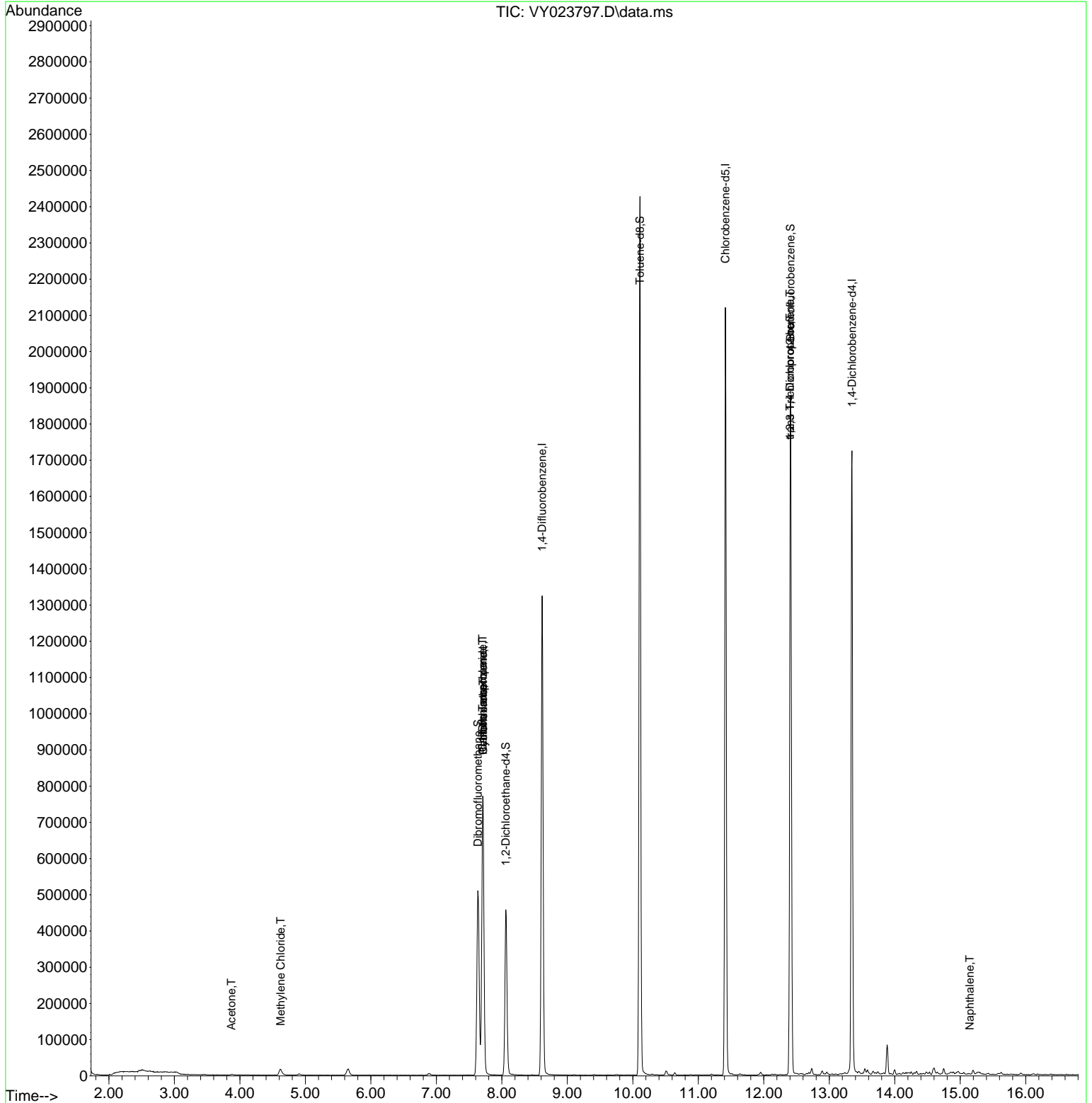
| Compound | R.T. | QIon | Response | Conc | Units | Dev(Min) |
|-------------------------------|--------|-------|----------|----------|--------|----------|
| ----- | | | | | | |
| Internal Standards | | | | | | |
| 1) Pentafluorobenzene | 7.713 | 168 | 611683 | 50.000 | ug/l | 0.00 |
| 34) 1,4-Difluorobenzene | 8.616 | 114 | 1145140 | 50.000 | ug/l | 0.00 |
| 63) Chlorobenzene-d5 | 11.414 | 117 | 1139851 | 50.000 | ug/l | 0.00 |
| 72) 1,4-Dichlorobenzene-d4 | 13.347 | 152 | 464776 | 50.000 | ug/l | 0.00 |
| System Monitoring Compounds | | | | | | |
| 33) 1,2-Dichloroethane-d4 | 8.061 | 65 | 354496 | 67.941 | ug/l | 0.00 |
| Spiked Amount | 50.000 | Range | 50 - 163 | Recovery | = | 135.880% |
| 35) Dibromofluoromethane | 7.634 | 113 | 374682 | 52.357 | ug/l | 0.00 |
| Spiked Amount | 50.000 | Range | 54 - 147 | Recovery | = | 104.720% |
| 50) Toluene-d8 | 10.109 | 98 | 1604191 | 60.177 | ug/l | 0.00 |
| Spiked Amount | 50.000 | Range | 58 - 134 | Recovery | = | 120.360% |
| 62) 4-Bromofluorobenzene | 12.408 | 95 | 471926 | 54.742 | ug/l | 0.00 |
| Spiked Amount | 50.000 | Range | 30 - 143 | Recovery | = | 109.480% |
| Target Compounds | | | | | | |
| | | | | | | Qvalue |
| 16) Acetone | 3.873 | 43 | 3222 | 2.484 | ug/l | 93 |
| 20) Methylene Chloride | 4.622 | 84 | 11849 | 1.892 | ug/l | 93 |
| 31) Cyclohexane | 7.713 | 56 | 12091 | 1.406 | ug/l # | 1 |
| 36) 1,1-Dichloropropene | 7.707 | 75 | 46491 | 4.862 | ug/l # | 47 |
| 38) Carbon Tetrachloride | 7.707 | 117 | 59099 | 5.245 | ug/l # | 17 |
| 76) 1,2,3-Trichloropropane | 12.402 | 75 | 231947 | 61.664 | ug/l # | 100 |
| 81) trans-1,4-Dichloro-2-b... | 12.402 | 75 | 231947 | 139.356 | ug/l # | 15 |
| 95) Naphthalene | 15.145 | 128 | 929 | 5.323 | ug/l # | 85 |
| ----- | | | | | | |

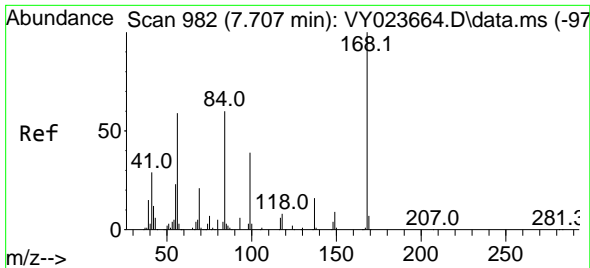
(#) = qualifier out of range (m) = manual integration (+) = signals summed

Data Path : Z:\voasrv\HPCHEM1\MSVOA_Y\Data\VY112425\
 Data File : VY023797.D
 Acq On : 24 Nov 2025 17:59
 Operator : SY/MD
 Sample : Q3712-01
 Misc : 7.11g/5.0mL/MSVOA_Y/SOIL/A
 ALS Vial : 13 Sample Multiplier: 1

Instrument :
 MSVOA_Y
ClientSampleId :
 JC-03-11212025

Quant Time: Nov 26 02:14:49 2025
 Quant Method : Z:\voasrv\HPCHEM1\MSVOA_Y\methods\82Y110425S.M
 Quant Title : SW846 8260
 QLast Update : Wed Nov 05 04:41:50 2025
 Response via : Initial Calibration

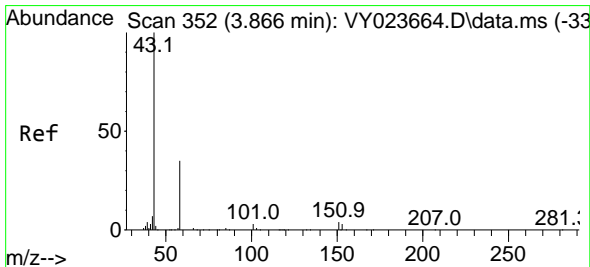
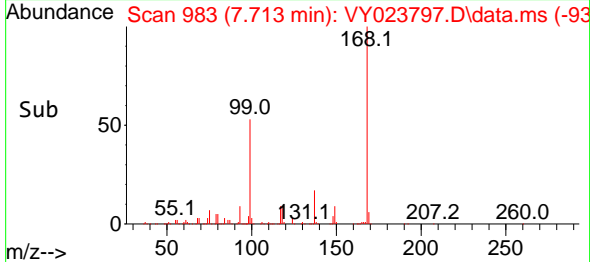
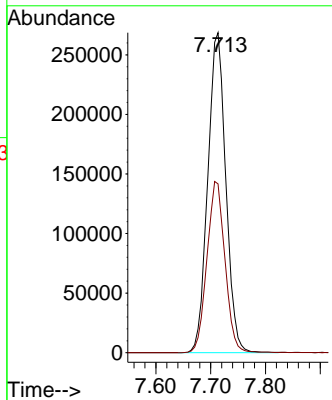
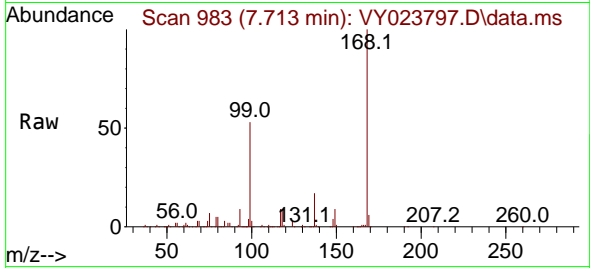




#1
 Pentafluorobenzene
 Concen: 50.000 ug/l
 RT: 7.713 min Scan# 91
 Delta R.T. 0.006 min
 Lab File: VY023797.D
 Acq: 24 Nov 2025 17:59

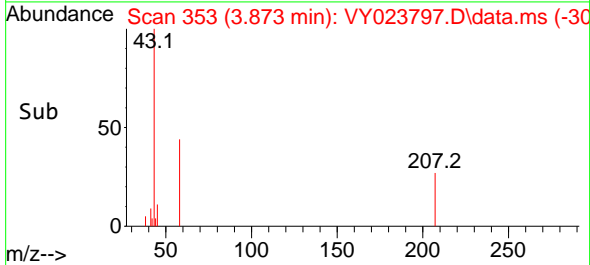
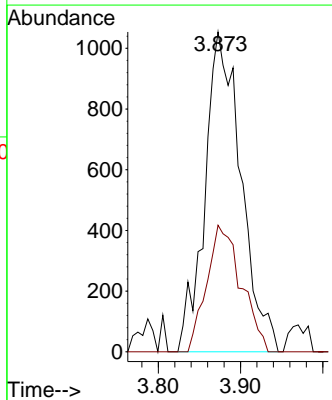
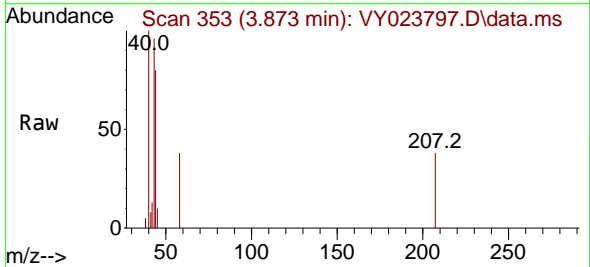
Instrument : MSVOA_Y
 ClientSampleId : JC-03-11212025

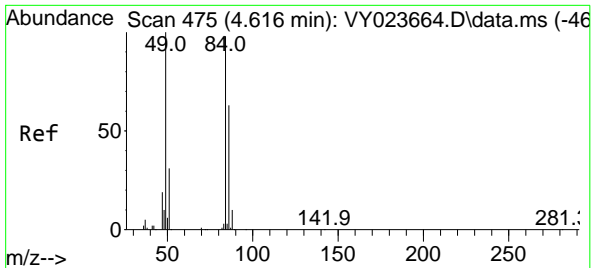
Tgt Ion:168 Resp: 611683
 Ion Ratio Lower Upper
 168 100
 99 52.8 41.0 61.4



#16
 Acetone
 Concen: 2.484 ug/l
 RT: 3.873 min Scan# 353
 Delta R.T. 0.006 min
 Lab File: VY023797.D
 Acq: 24 Nov 2025 17:59

Tgt Ion: 43 Resp: 3222
 Ion Ratio Lower Upper
 43 100
 58 39.6 28.2 42.4

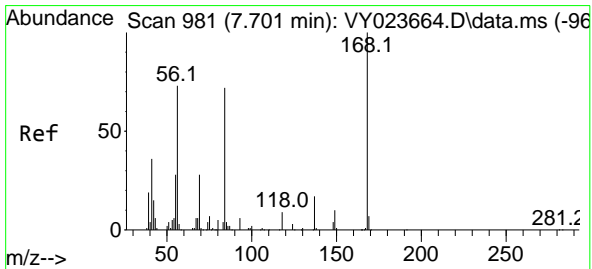
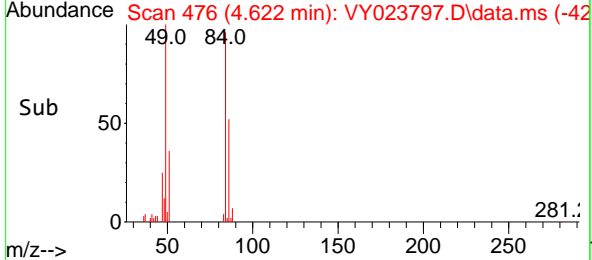
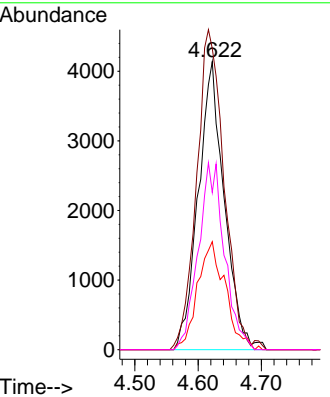
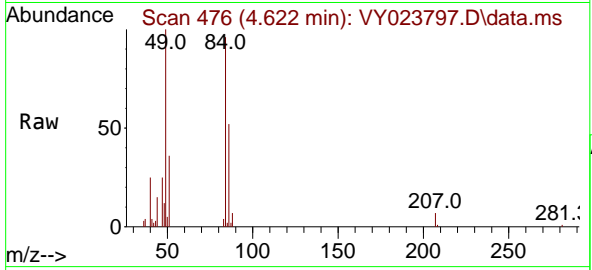




#20
 Methylene Chloride
 Concen: 1.892 ug/l
 RT: 4.622 min Scan# 41
 Delta R.T. 0.006 min
 Lab File: VY023797.D
 Acq: 24 Nov 2025 17:59

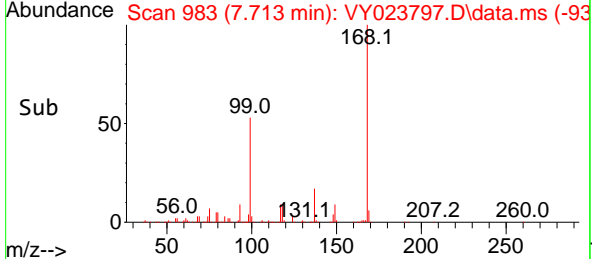
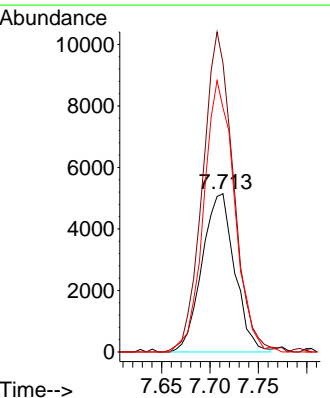
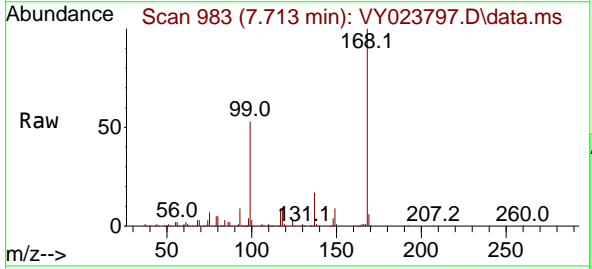
Instrument : MSVOA_Y
 ClientSampleId : JC-03-11212025

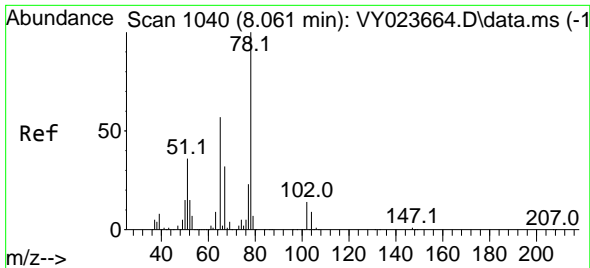
| Tgt Ion | Resp | Lower | Upper |
|---------|-------|-------|-------|
| 84 | 11849 | | |
| 84 | 100 | | |
| 49 | 104.5 | 81.5 | 122.3 |
| 51 | 37.5 | 25.5 | 38.3 |
| 86 | 54.6 | 51.2 | 76.8 |



#31
 Cyclohexane
 Concen: 1.406 ug/l
 RT: 7.713 min Scan# 983
 Delta R.T. 0.012 min
 Lab File: VY023797.D
 Acq: 24 Nov 2025 17:59

| Tgt Ion | Resp | Lower | Upper |
|---------|-------|-------|--------|
| 56 | 12091 | | |
| 56 | 100 | | |
| 69 | 181.0 | 30.5 | 45.7# |
| 84 | 154.1 | 79.0 | 118.4# |

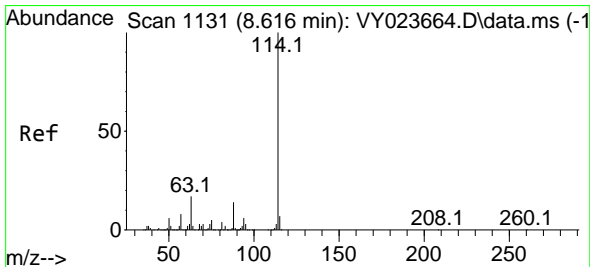
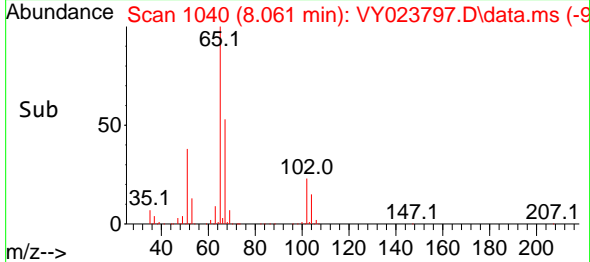
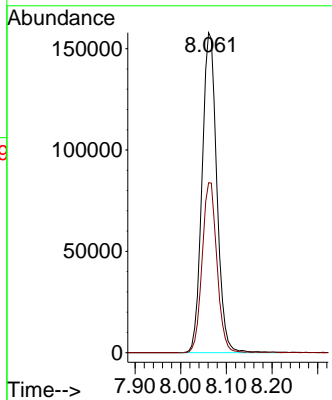
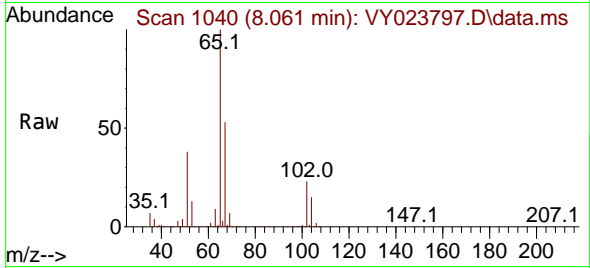




#33
 1,2-Dichloroethane-d4
 Concen: 67.941 ug/l
 RT: 8.061 min Scan# 1040
 Delta R.T. 0.000 min
 Lab File: VY023797.D
 Acq: 24 Nov 2025 17:59

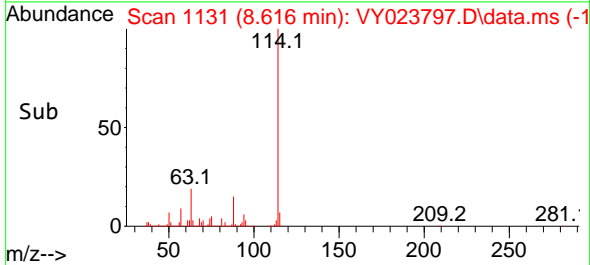
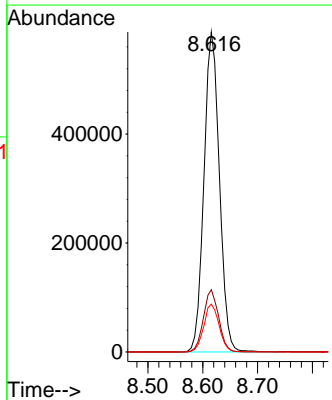
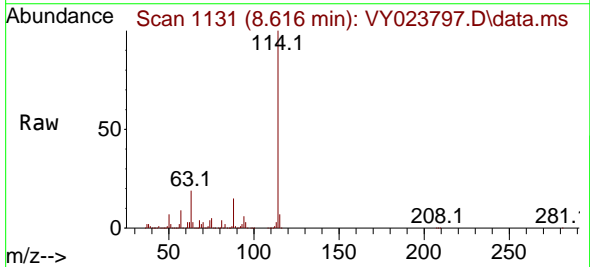
Instrument :
 MSVOA_Y
 ClientSampleId :
 JC-03-11212025

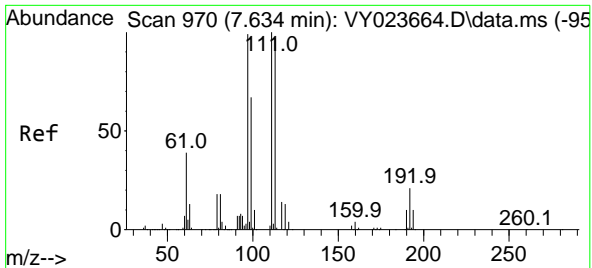
Tgt Ion: 65 Resp: 354496
 Ion Ratio Lower Upper
 65 100
 67 53.1 0.0 107.4



#34
 1,4-Difluorobenzene
 Concen: 50.000 ug/l
 RT: 8.616 min Scan# 1131
 Delta R.T. 0.000 min
 Lab File: VY023797.D
 Acq: 24 Nov 2025 17:59

Tgt Ion:114 Resp: 1145140
 Ion Ratio Lower Upper
 114 100
 63 19.4 0.0 33.8
 88 15.0 0.0 29.0

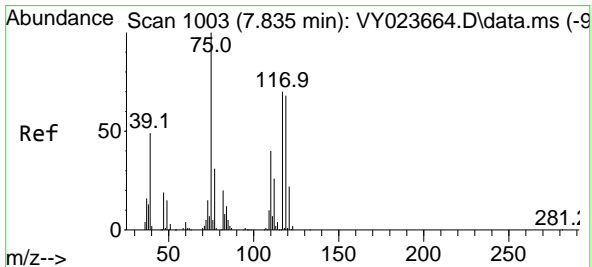
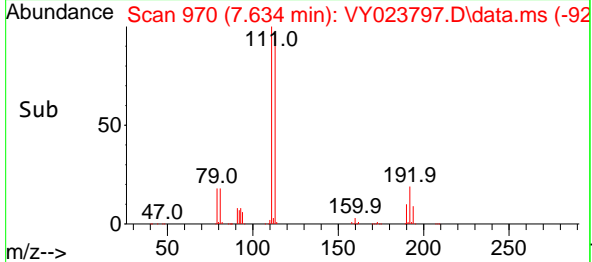
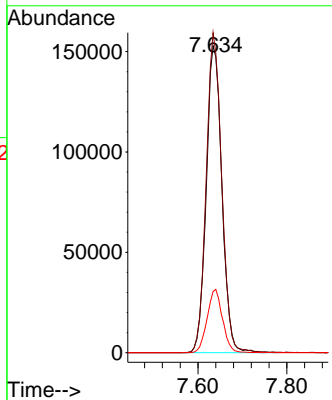
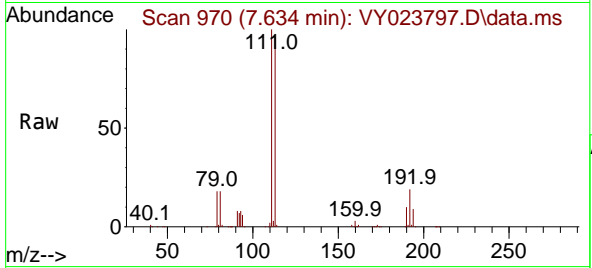




#35
 Dibromofluoromethane
 Concen: 52.357 ug/l
 RT: 7.634 min Scan# 91
 Delta R.T. 0.000 min
 Lab File: VY023797.D
 Acq: 24 Nov 2025 17:59

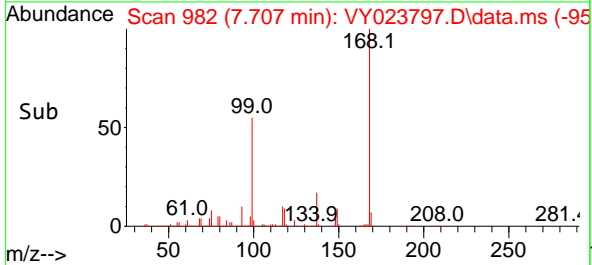
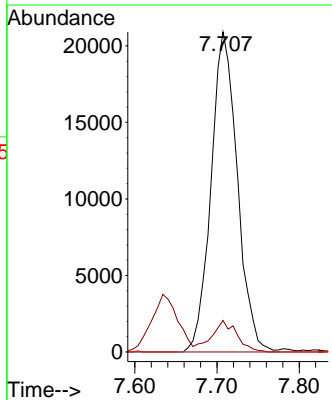
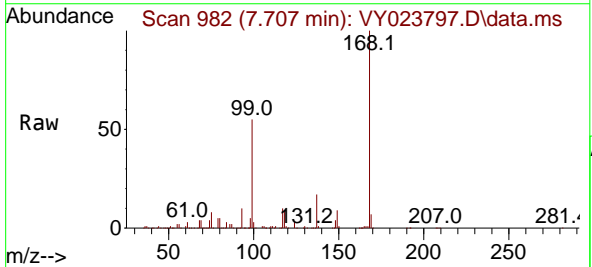
Instrument : MSVOA_Y
 ClientSampleId : JC-03-11212025

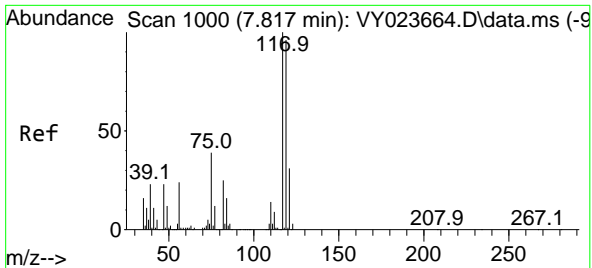
| Tgt Ion | Resp | Lower | Upper |
|---------|--------|-------|-------|
| 113 | 374682 | | |
| 113 | 100 | | |
| 111 | 103.2 | 82.2 | 123.4 |
| 192 | 20.2 | 17.3 | 25.9 |



#36
 1,1-Dichloropropene
 Concen: 4.862 ug/l
 RT: 7.707 min Scan# 982
 Delta R.T. -0.128 min
 Lab File: VY023797.D
 Acq: 24 Nov 2025 17:59

| Tgt Ion | Resp | Lower | Upper |
|---------|-------|-------|-------|
| 75 | 46491 | | |
| 75 | 100 | | |
| 110 | 9.1 | 19.7 | 59.0# |
| 77 | 0.0 | 25.2 | 37.8# |

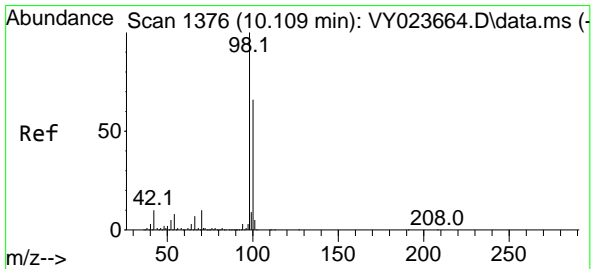
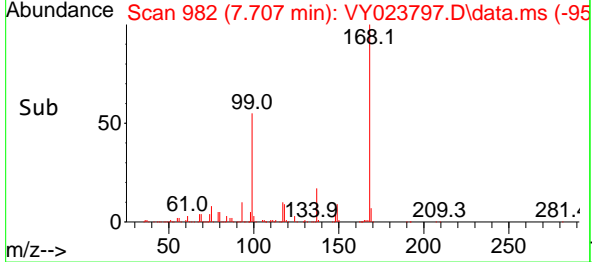
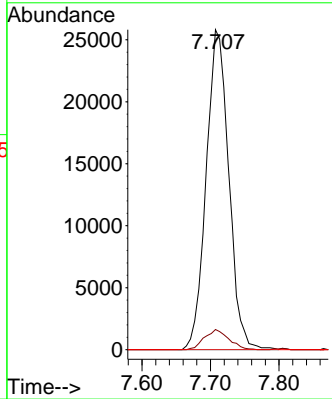
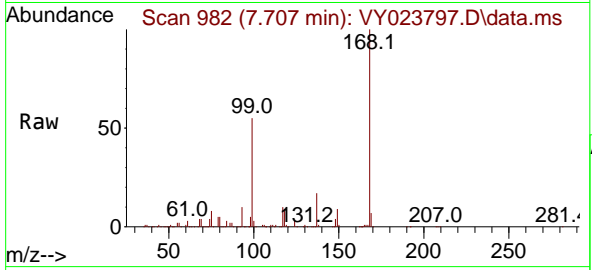




#38
 Carbon Tetrachloride
 Concen: 5.245 ug/l
 RT: 7.707 min Scan# 91
 Delta R.T. -0.110 min
 Lab File: VY023797.D
 Acq: 24 Nov 2025 17:59

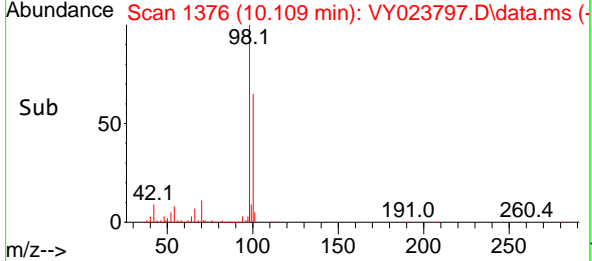
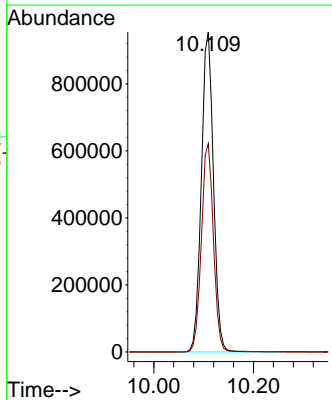
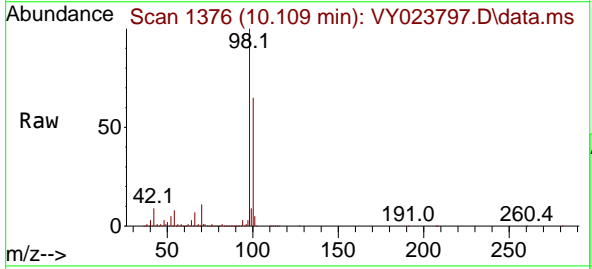
Instrument : MSVOA_Y
 ClientSampleId : JC-03-11212025

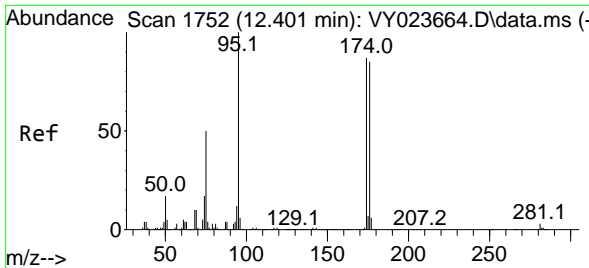
| Tgt Ion | Resp | Lower | Upper |
|---------|-------|-------|--------|
| 117 | 59099 | | |
| 117 | 100 | | |
| 119 | 6.3 | 76.3 | 114.5# |
| 121 | 0.0 | 24.8 | 37.2# |



#50
 Toluene-d8
 Concen: 60.177 ug/l
 RT: 10.109 min Scan# 1376
 Delta R.T. 0.000 min
 Lab File: VY023797.D
 Acq: 24 Nov 2025 17:59

| Tgt Ion | Resp | Lower | Upper |
|---------|---------|-------|-------|
| 98 | 1604191 | | |
| 98 | 100 | | |
| 100 | 64.7 | 52.7 | 79.1 |



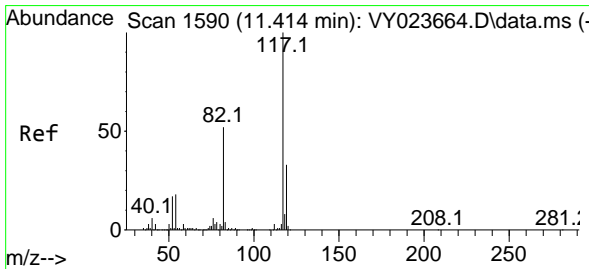
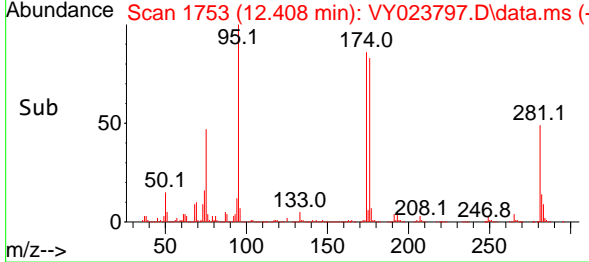
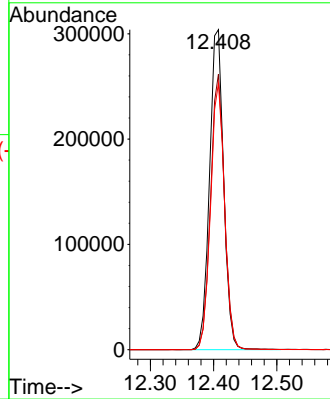
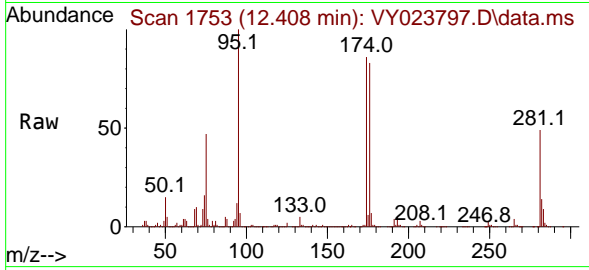


#62
 4-Bromofluorobenzene
 Concen: 54.742 ug/l
 RT: 12.408 min Scan# 1753
 Delta R.T. 0.006 min
 Lab File: VY023797.D
 Acq: 24 Nov 2025 17:59

Instrument : MSVOA_Y
 ClientSampleId : JC-03-11212025

Tgt Ion: 95 Resp: 471926

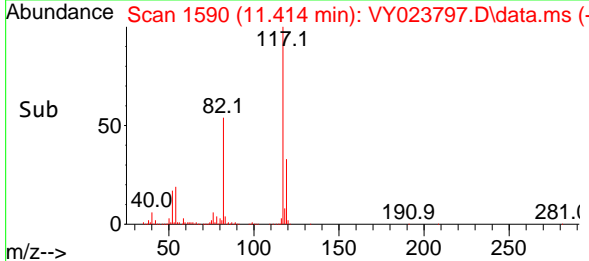
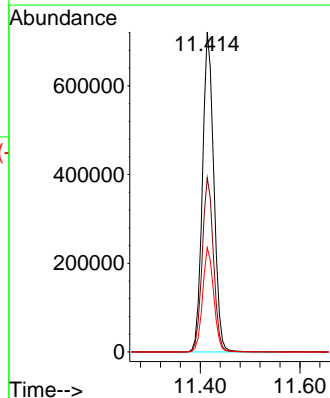
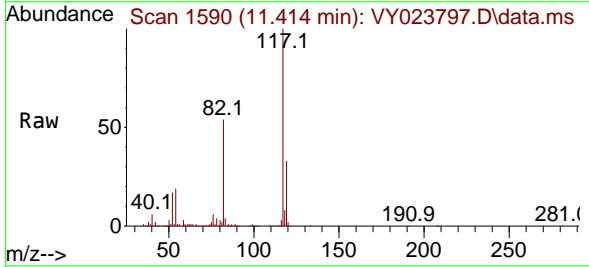
| Ion | Ratio | Lower | Upper |
|-----|-------|-------|-------|
| 95 | 100 | | |
| 174 | 85.0 | 0.0 | 184.8 |
| 176 | 82.4 | 0.0 | 181.6 |

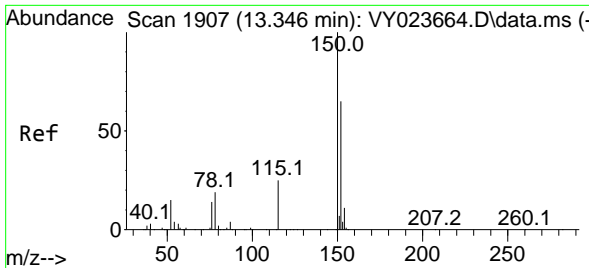


#63
 Chlorobenzene-d5
 Concen: 50.000 ug/l
 RT: 11.414 min Scan# 1590
 Delta R.T. 0.000 min
 Lab File: VY023797.D
 Acq: 24 Nov 2025 17:59

Tgt Ion: 117 Resp: 1139851

| Ion | Ratio | Lower | Upper |
|-----|-------|-------|-------|
| 117 | 100 | | |
| 82 | 54.4 | 41.2 | 61.8 |
| 119 | 32.6 | 26.2 | 39.2 |

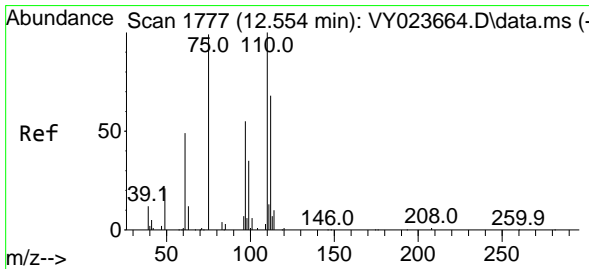
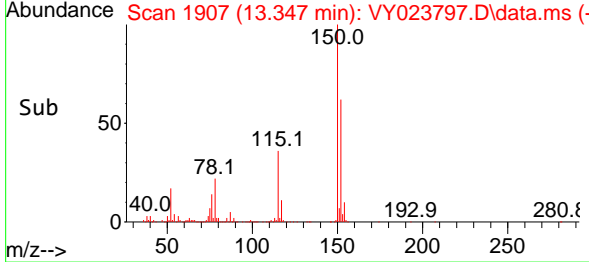
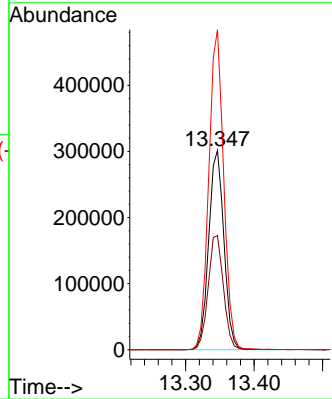
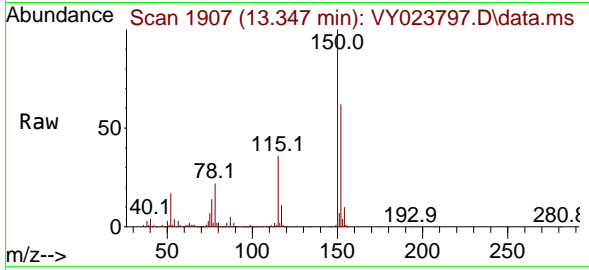




#72
 1,4-Dichlorobenzene-d4
 Concen: 50.000 ug/l
 RT: 13.347 min Scan# 1907
 Delta R.T. 0.000 min
 Lab File: VY023797.D
 Acq: 24 Nov 2025 17:59

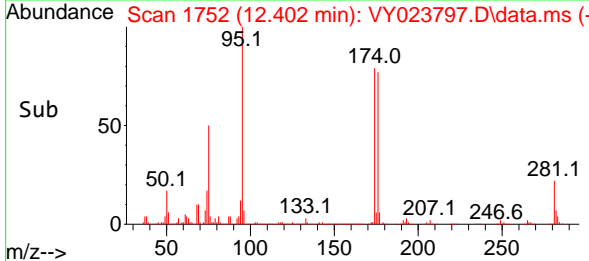
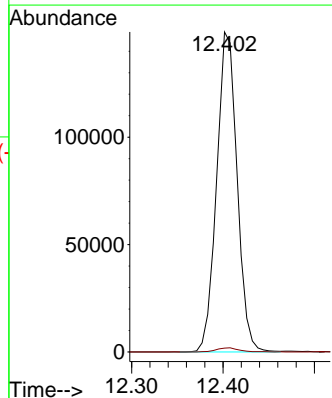
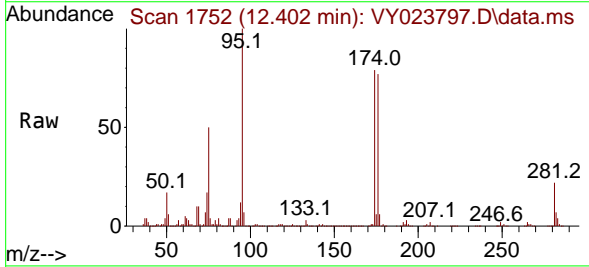
Instrument : MSVOA_Y
 ClientSampleId : JC-03-11212025

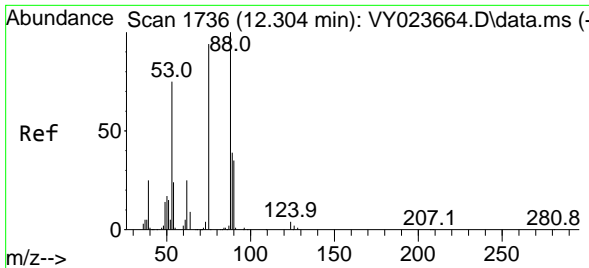
| Tgt Ion | Resp | Lower | Upper |
|---------|--------|-------|-------|
| 152 | 464776 | 100 | |
| 115 | 57.9 | 27.5 | 82.5 |
| 150 | 157.2 | 0.0 | 349.0 |



#76
 1,2,3-Trichloropropane
 Concen: 61.664 ug/l
 RT: 12.402 min Scan# 1752
 Delta R.T. -0.152 min
 Lab File: VY023797.D
 Acq: 24 Nov 2025 17:59

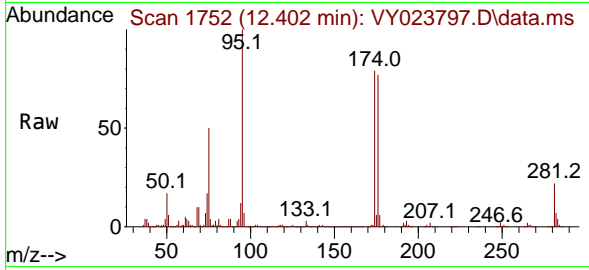
| Tgt Ion | Resp | Lower | Upper |
|---------|--------|-------|-------|
| 75 | 231947 | 100 | |
| 77 | 1.5 | 0.0 | 0.0# |



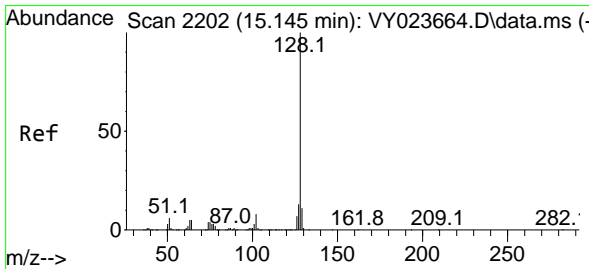
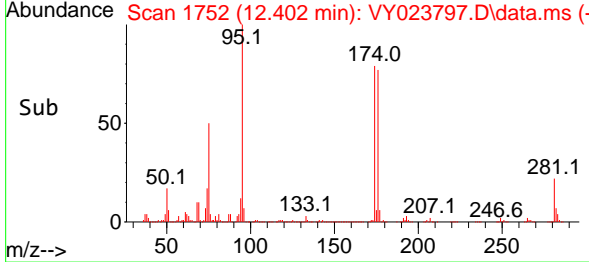
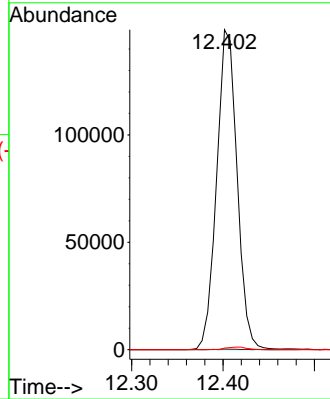


#81
 trans-1,4-Dichloro-2-butene
 Concen: 139.356 ug/l
 RT: 12.402 min Scan# 1752
 Delta R.T. 0.098 min
 Lab File: VY023797.D
 Acq: 24 Nov 2025 17:59

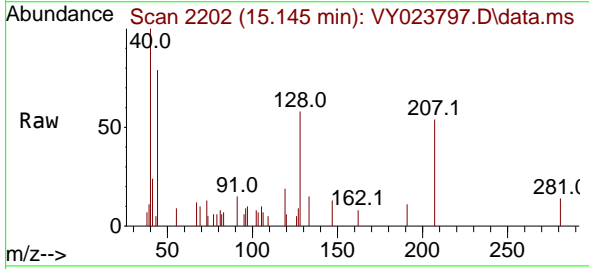
Instrument : MSVOA_Y
 ClientSampleId : JC-03-11212025



Tgt Ion: 75 Resp: 231947
 Ion Ratio Lower Upper
 75 100
 53 0.2 69.6 104.4#
 89 0.8 38.2 57.4#



#95
 Naphthalene
 Concen: 5.323 ug/l
 RT: 15.145 min Scan# 2202
 Delta R.T. 0.000 min
 Lab File: VY023797.D
 Acq: 24 Nov 2025 17:59



Tgt Ion: 128 Resp: 929
 Ion Ratio Lower Upper
 128 100
 127 14.5 10.5 15.7
 129 0.0 8.8 13.2#

