

Data Path : Z:\voasrv\HPCHEM1\MSVOA_Y\Data\VY112425\
 Data File : VY023798.D
 Acq On : 24 Nov 2025 18:22
 Operator : SY/MD
 Sample : Q3714-01
 Misc : 6.98g/5.0mL/MSVOA_Y/SOIL/A
 ALS Vial : 14 Sample Multiplier: 1

Instrument :
 MSVOA_Y
ClientSampleId :
 OR-03-11-24-2025

Quant Time: Nov 26 02:15:10 2025
 Quant Method : Z:\voasrv\HPCHEM1\MSVOA_Y\methods\82Y110425S.M
 Quant Title : SW846 8260
 QLast Update : Wed Nov 05 04:41:50 2025
 Response via : Initial Calibration

Compound	R.T.	QIon	Response	Conc	Units	Dev(Min)

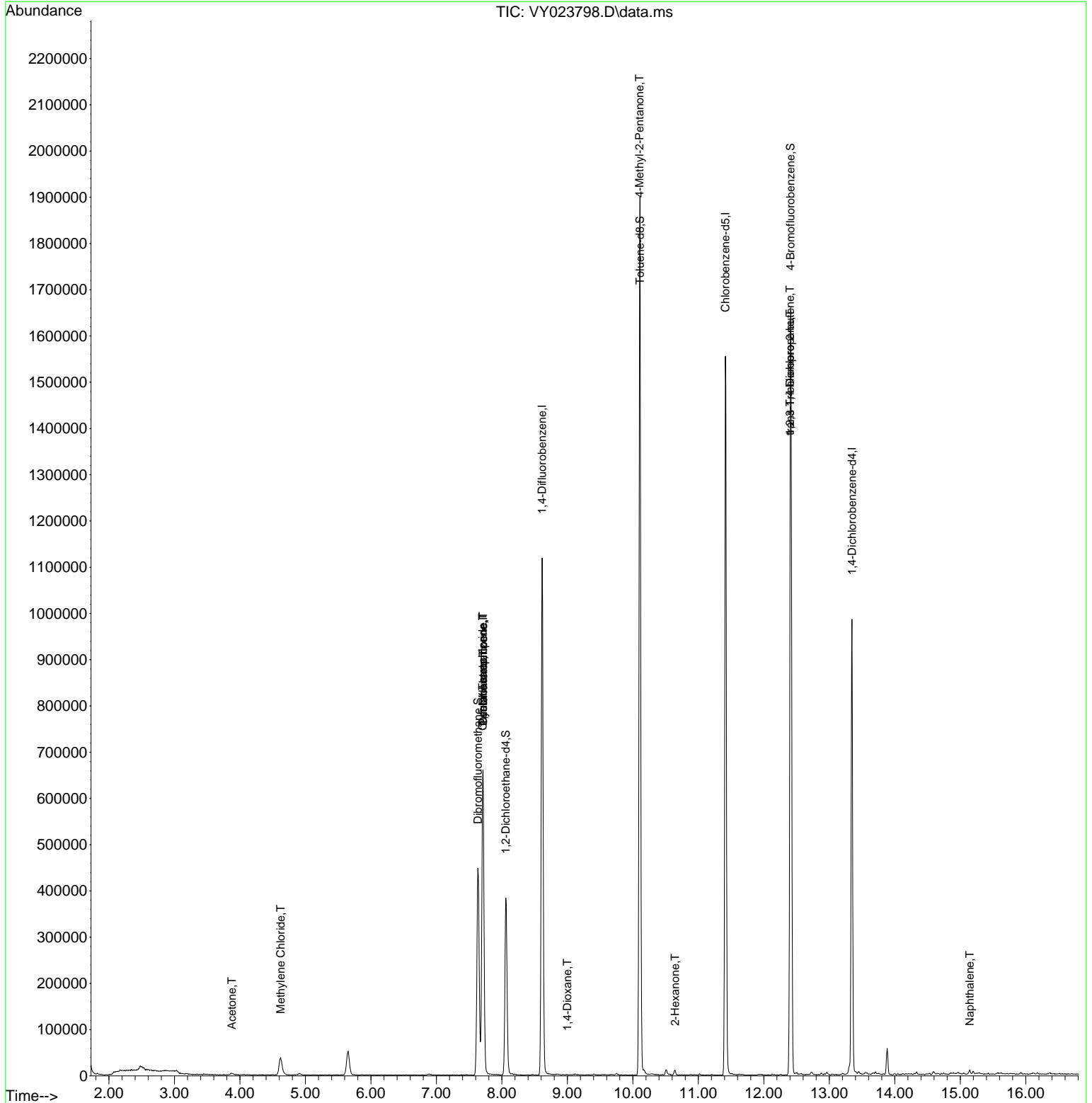
Internal Standards						
1) Pentafluorobenzene	7.713	168	524181	50.000	ug/l	0.00
34) 1,4-Difluorobenzene	8.615	114	981362	50.000	ug/l	0.00
63) Chlorobenzene-d5	11.414	117	897104	50.000	ug/l	0.00
72) 1,4-Dichlorobenzene-d4	13.346	152	269469	50.000	ug/l	0.00
System Monitoring Compounds						
33) 1,2-Dichloroethane-d4	8.061	65	302439	67.640	ug/l	0.00
Spiked Amount	50.000	Range 50 - 163	Recovery	=	135.280%	
35) Dibromofluoromethane	7.634	113	327309	53.370	ug/l	0.00
Spiked Amount	50.000	Range 54 - 147	Recovery	=	106.740%	
50) Toluene-d8	10.109	98	1290320	56.481	ug/l	0.00
Spiked Amount	50.000	Range 58 - 134	Recovery	=	112.960%	
62) 4-Bromofluorobenzene	12.407	95	331218	44.832	ug/l	0.00
Spiked Amount	50.000	Range 30 - 143	Recovery	=	89.660%	
Target Compounds						
						Qvalue
16) Acetone	3.878	43	6133	5.518	ug/l #	83
20) Methylene Chloride	4.622	84	29826	5.559	ug/l	94
31) Cyclohexane	7.713	56	10894	1.478	ug/l #	1
36) 1,1-Dichloropropene	7.713	75	39763	4.852	ug/l #	48
38) Carbon Tetrachloride	7.707	117	49596	5.136	ug/l #	17
49) 1,4-Dioxane	8.999	88	57	1.577	ug/l #	1
51) 4-Methyl-2-Pentanone	10.103	43	4285	1.352	ug/l #	1
59) 2-Hexanone	10.645	43	3860	1.669	ug/l #	20
76) 1,2,3-Trichloropropane	12.401	75	158585	72.717	ug/l #	100
81) trans-1,4-Dichloro-2-b...	12.401	75	158585	164.337	ug/l #	15
95) Naphthalene	15.145	128	7464	6.104	ug/l	97

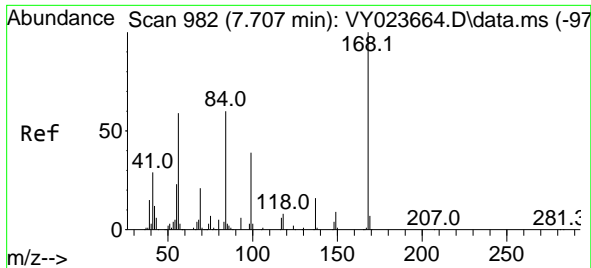
(#) = qualifier out of range (m) = manual integration (+) = signals summed

Data Path : Z:\voasrv\HPCHEM1\MSVOA_Y\Data\VY112425\
 Data File : VY023798.D
 Acq On : 24 Nov 2025 18:22
 Operator : SY/MD
 Sample : Q3714-01
 Misc : 6.98g/5.0mL/MSVOA_Y/SOIL/A
 ALS Vial : 14 Sample Multiplier: 1

Instrument :
 MSVOA_Y
ClientSampleId :
 OR-03-11-24-2025

Quant Time: Nov 26 02:15:10 2025
 Quant Method : Z:\voasrv\HPCHEM1\MSVOA_Y\methods\82Y110425S.M
 Quant Title : SW846 8260
 QLast Update : Wed Nov 05 04:41:50 2025
 Response via : Initial Calibration

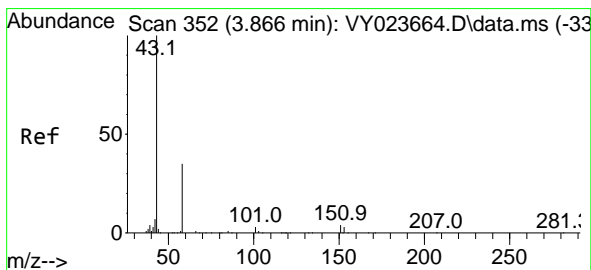
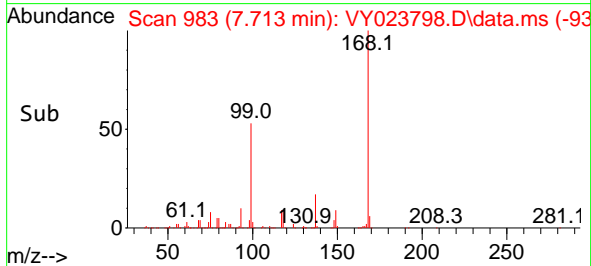
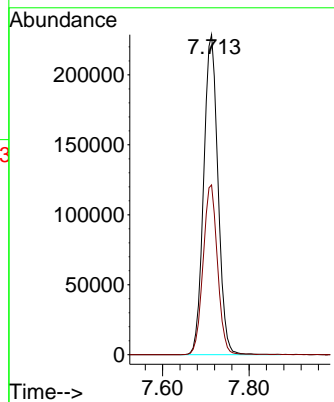
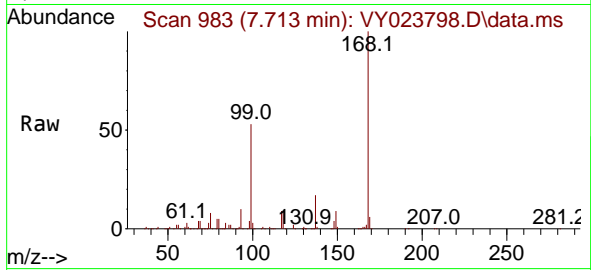




#1
 Pentafluorobenzene
 Concen: 50.000 ug/l
 RT: 7.713 min Scan# 91
 Delta R.T. 0.006 min
 Lab File: VY023798.D
 Acq: 24 Nov 2025 18:22

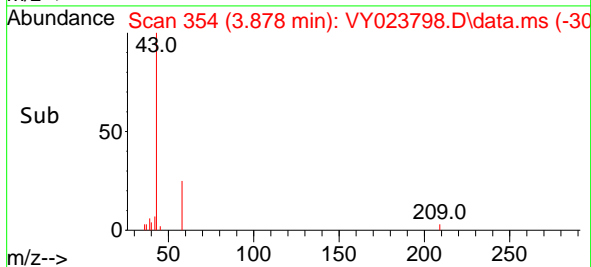
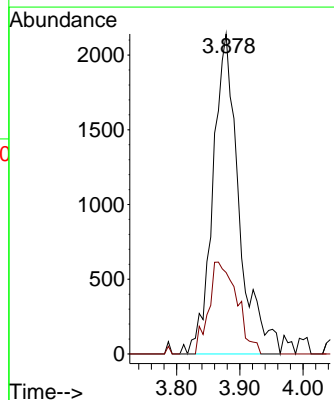
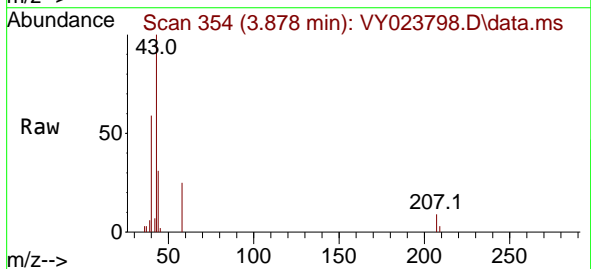
Instrument :
 MSVOA_Y
 ClientSampleId :
 OR-03-11-24-2025

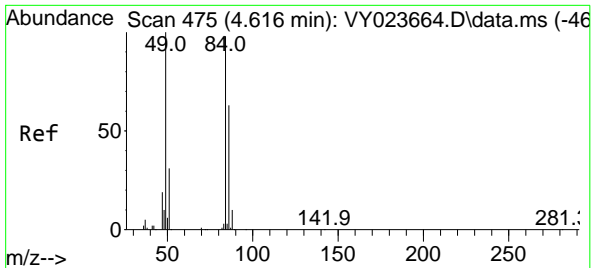
Tgt Ion:168 Resp: 524181
 Ion Ratio Lower Upper
 168 100
 99 53.0 41.0 61.4



#16
 Acetone
 Concen: 5.518 ug/l
 RT: 3.878 min Scan# 354
 Delta R.T. 0.012 min
 Lab File: VY023798.D
 Acq: 24 Nov 2025 18:22

Tgt Ion: 43 Resp: 6133
 Ion Ratio Lower Upper
 43 100
 58 25.5 28.2 42.4#



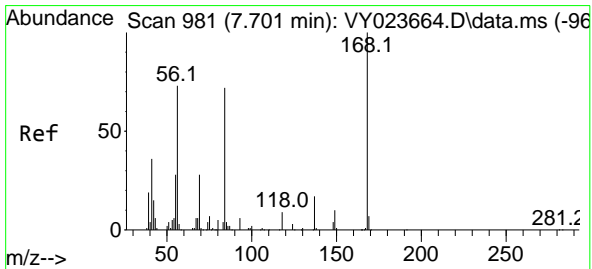
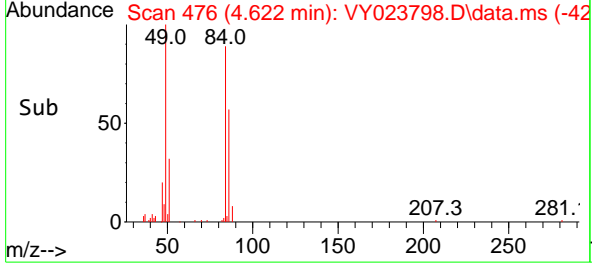
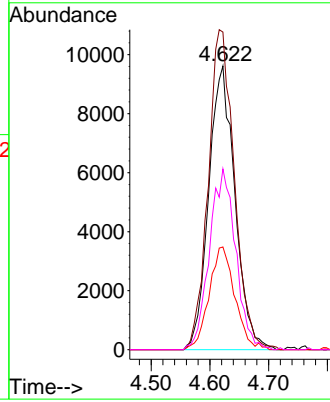
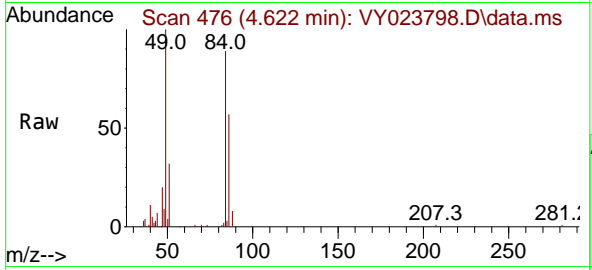


#20
 Methylene Chloride
 Concen: 5.559 ug/l
 RT: 4.622 min Scan# 41
 Delta R.T. 0.006 min
 Lab File: VY023798.D
 Acq: 24 Nov 2025 18:22

Instrument : MSVOA_Y
 ClientSampleId : OR-03-11-24-2025

Tgt Ion: 84 Resp: 29826

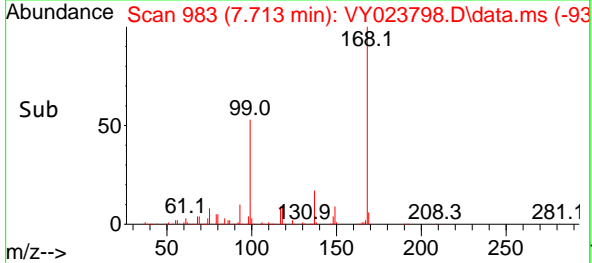
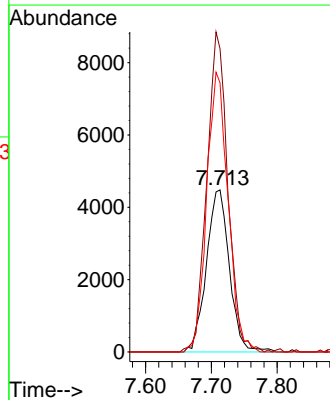
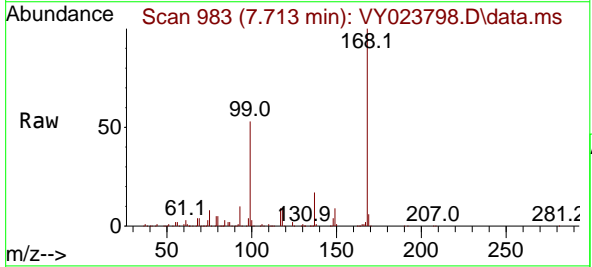
Ion	Ratio	Lower	Upper
84	100		
49	112.0	81.5	122.3
51	36.2	25.5	38.3
86	63.8	51.2	76.8

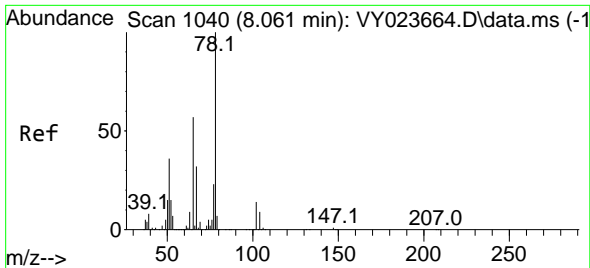


#31
 Cyclohexane
 Concen: 1.478 ug/l
 RT: 7.713 min Scan# 983
 Delta R.T. 0.012 min
 Lab File: VY023798.D
 Acq: 24 Nov 2025 18:22

Tgt Ion: 56 Resp: 10894

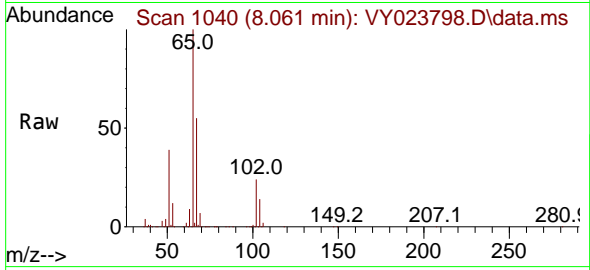
Ion	Ratio	Lower	Upper
56	100		
69	187.1	30.5	45.7#
84	166.1	79.0	118.4#



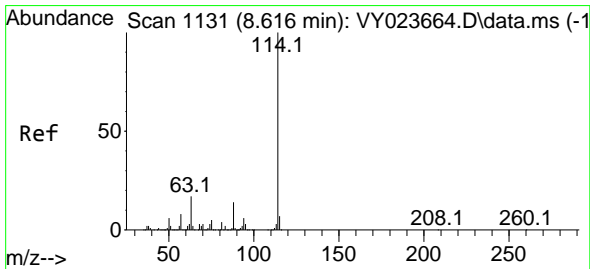
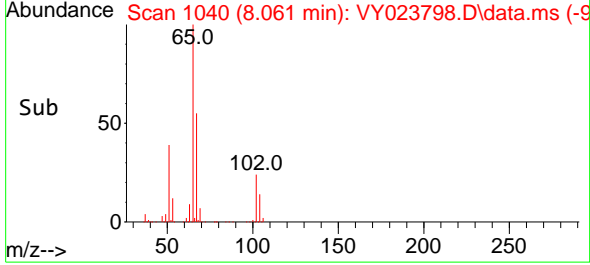
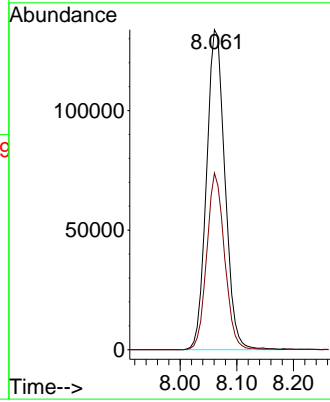


#33
 1,2-Dichloroethane-d4
 Concen: 67.640 ug/l
 RT: 8.061 min Scan# 1040
 Delta R.T. -0.000 min
 Lab File: VY023798.D
 Acq: 24 Nov 2025 18:22

Instrument : MSVOA_Y
 ClientSampleId : OR-03-11-24-2025

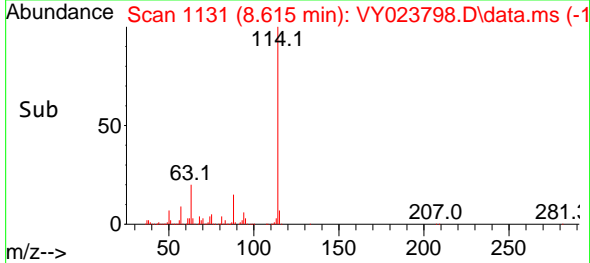
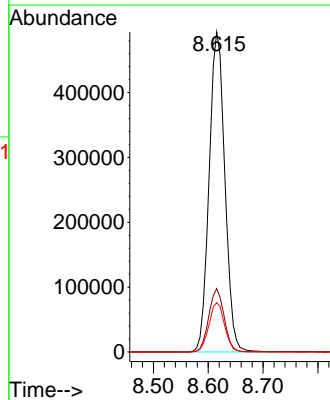
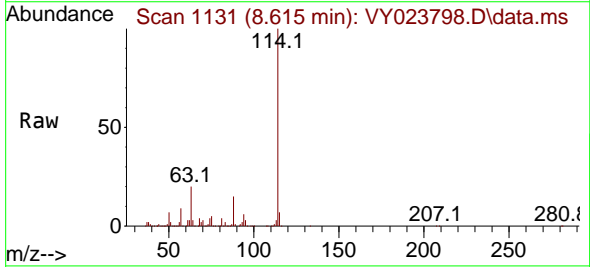


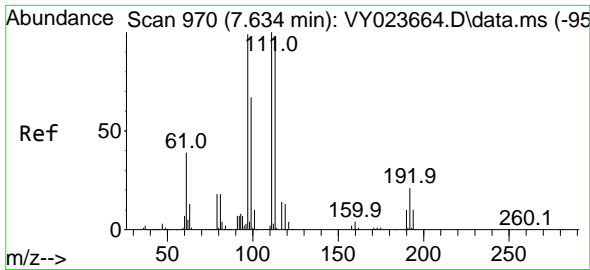
Tgt Ion: 65 Resp: 302439
 Ion Ratio Lower Upper
 65 100
 67 53.4 0.0 107.4



#34
 1,4-Difluorobenzene
 Concen: 50.000 ug/l
 RT: 8.615 min Scan# 1131
 Delta R.T. -0.000 min
 Lab File: VY023798.D
 Acq: 24 Nov 2025 18:22

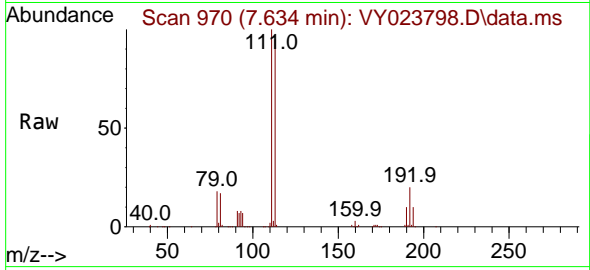
Tgt Ion: 114 Resp: 981362
 Ion Ratio Lower Upper
 114 100
 63 19.8 0.0 33.8
 88 15.4 0.0 29.0



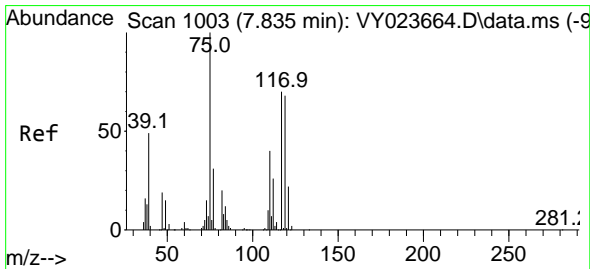
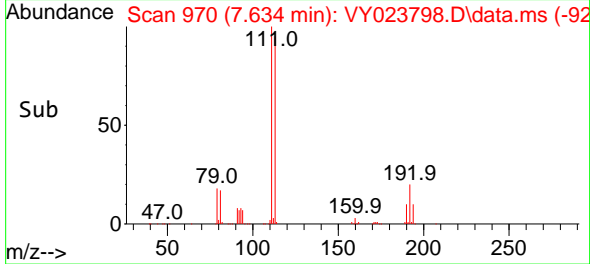
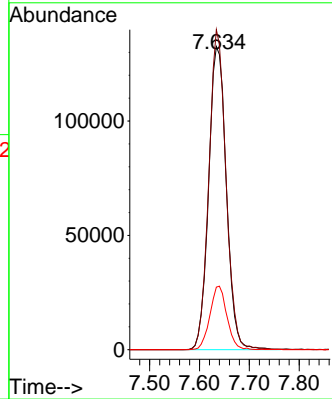


#35
 Dibromofluoromethane
 Concen: 53.370 ug/l
 RT: 7.634 min Scan# 91
 Delta R.T. -0.000 min
 Lab File: VY023798.D
 Acq: 24 Nov 2025 18:22

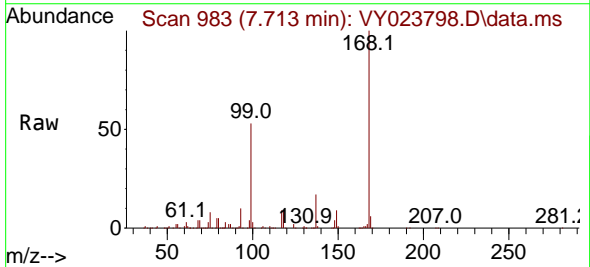
Instrument : MSVOA_Y
 ClientSampleId : OR-03-11-24-2025



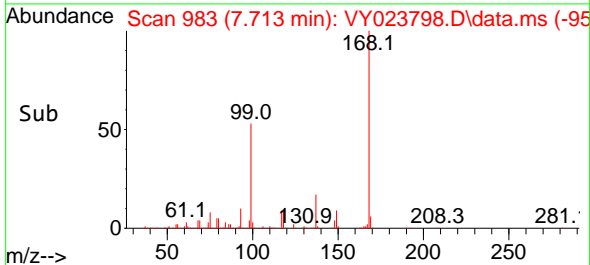
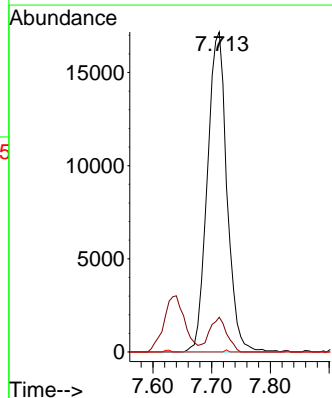
Tgt Ion:113 Resp: 327309
 Ion Ratio Lower Upper
 113 100
 111 102.3 82.2 123.4
 192 20.1 17.3 25.9

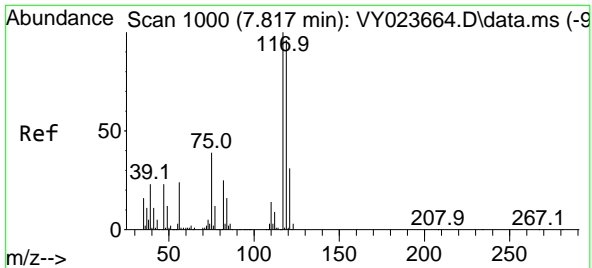


#36
 1,1-Dichloropropene
 Concen: 4.852 ug/l
 RT: 7.713 min Scan# 983
 Delta R.T. -0.122 min
 Lab File: VY023798.D
 Acq: 24 Nov 2025 18:22



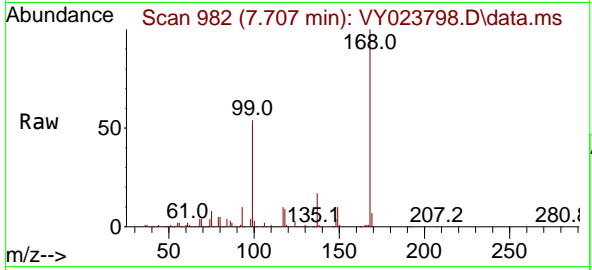
Tgt Ion: 75 Resp: 39763
 Ion Ratio Lower Upper
 75 100
 110 9.8 19.7 59.0#
 77 0.1 25.2 37.8#



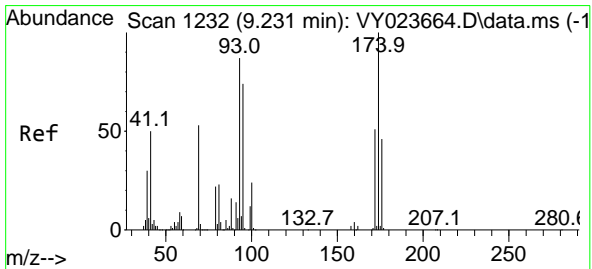
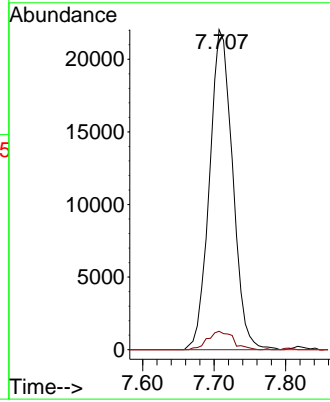
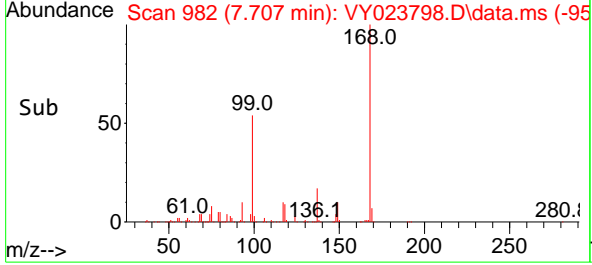


#38
 Carbon Tetrachloride
 Concen: 5.136 ug/l
 RT: 7.707 min Scan# 91
 Delta R.T. -0.110 min
 Lab File: VY023798.D
 Acq: 24 Nov 2025 18:22

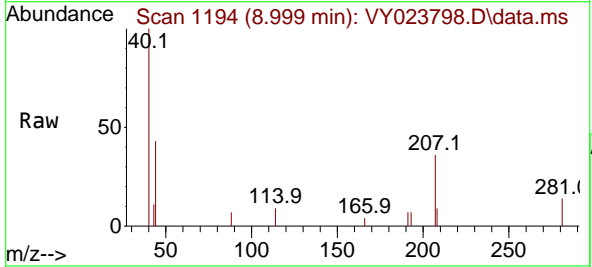
Instrument : MSVOA_Y
 ClientSampleId : OR-03-11-24-2025



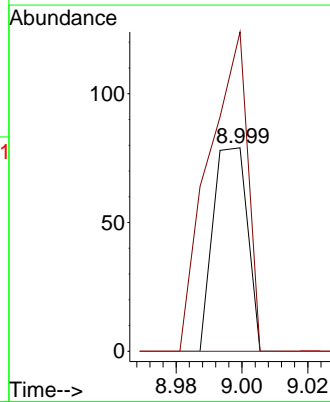
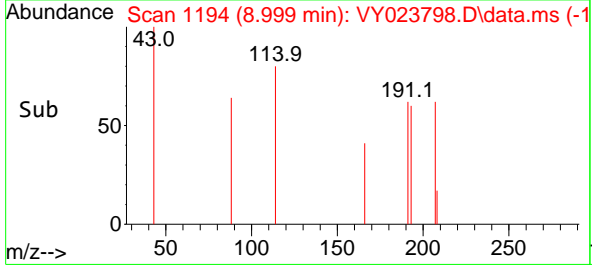
Tgt Ion: 117 Resp: 49596
 Ion Ratio Lower Upper
 117 100
 119 5.8 76.3 114.5#
 121 0.0 24.8 37.2#

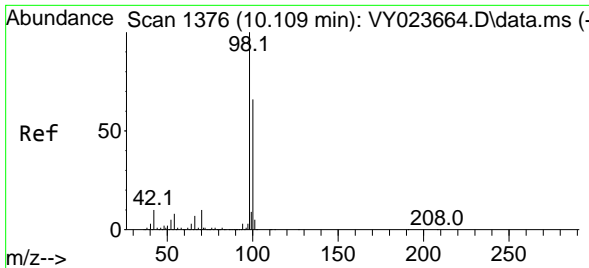


#49
 1,4-Dioxane
 Concen: 1.577 ug/l
 RT: 8.999 min Scan# 1194
 Delta R.T. -0.232 min
 Lab File: VY023798.D
 Acq: 24 Nov 2025 18:22



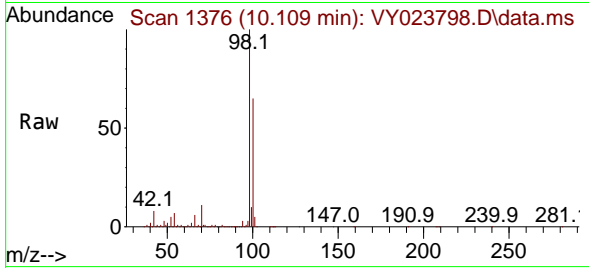
Tgt Ion: 88 Resp: 57
 Ion Ratio Lower Upper
 88 100
 43 178.9 22.0 33.0#
 58 0.0 47.8 71.8#



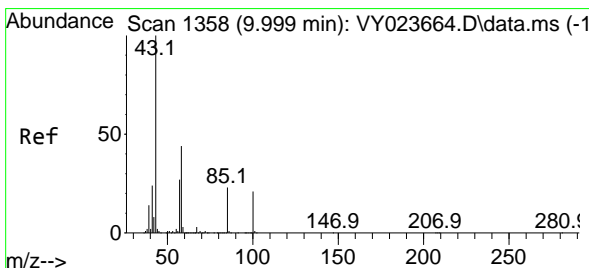
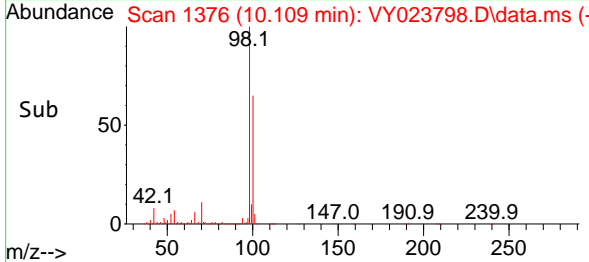
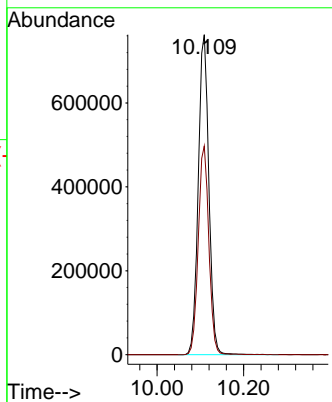


#50
 Toluene-d8
 Concen: 56.481 ug/l
 RT: 10.109 min Scan# 1376
 Delta R.T. -0.000 min
 Lab File: VY023798.D
 Acq: 24 Nov 2025 18:22

Instrument : MSVOA_Y
 ClientSampleId : OR-03-11-24-2025

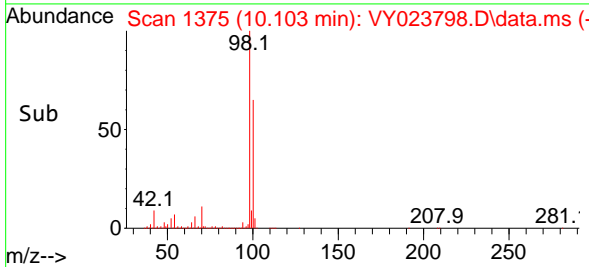
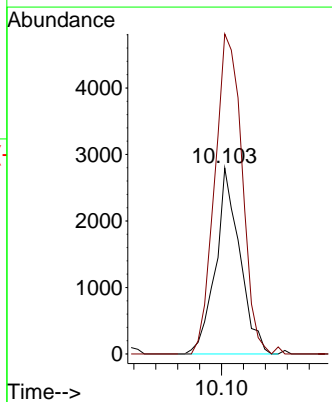
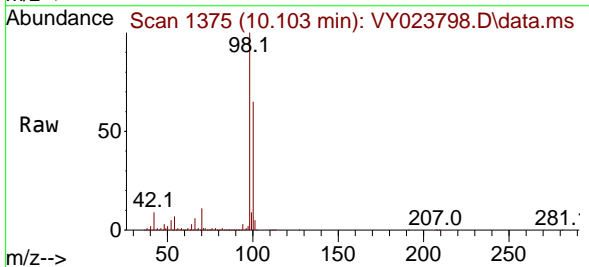


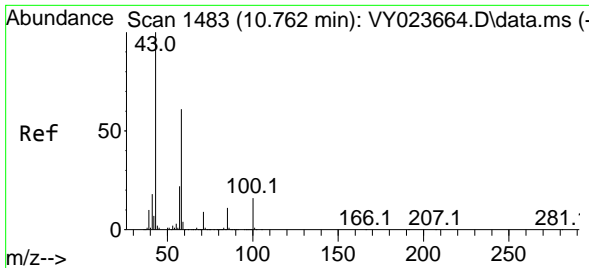
Tgt Ion: 98 Resp: 1290320
 Ion Ratio Lower Upper
 98 100
 100 65.3 52.7 79.1



#51
 4-Methyl-2-Pentanone
 Concen: 1.352 ug/l
 RT: 10.103 min Scan# 1375
 Delta R.T. 0.103 min
 Lab File: VY023798.D
 Acq: 24 Nov 2025 18:22

Tgt Ion: 43 Resp: 4285
 Ion Ratio Lower Upper
 43 100
 58 194.6 34.8 52.2#



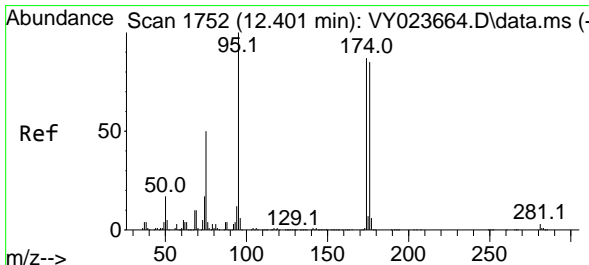
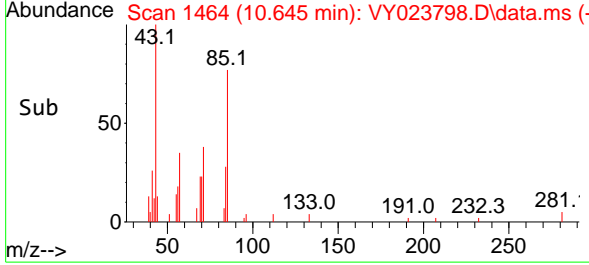
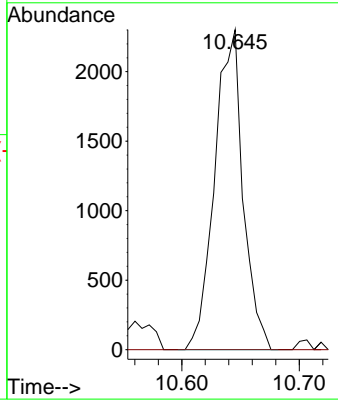
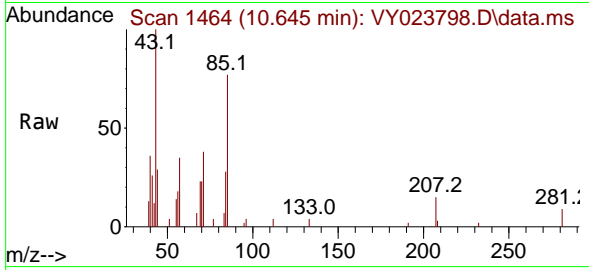


#59
 2-Hexanone
 Concen: 1.669 ug/l
 RT: 10.645 min Scan# 1483
 Delta R.T. -0.116 min
 Lab File: VY023798.D
 Acq: 24 Nov 2025 18:22

Instrument : MSVOA_Y
 ClientSampleId : OR-03-11-24-2025

Tgt Ion: 43 Resp: 3860

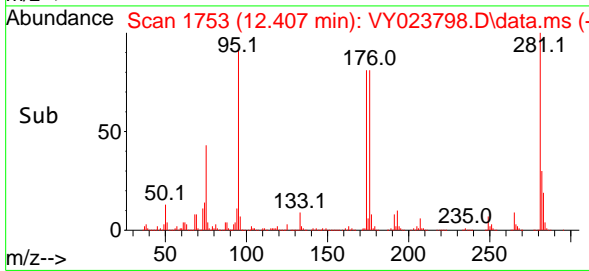
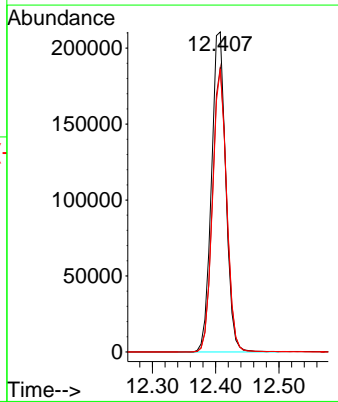
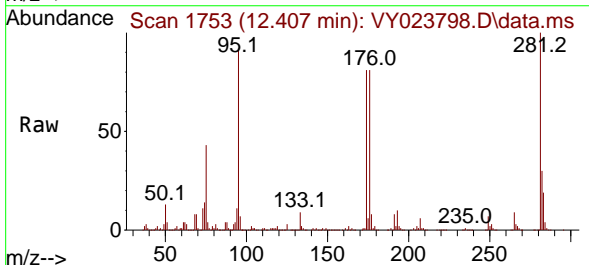
Ion	Ratio	Lower	Upper
43	100		
58	0.0	30.2	90.6#

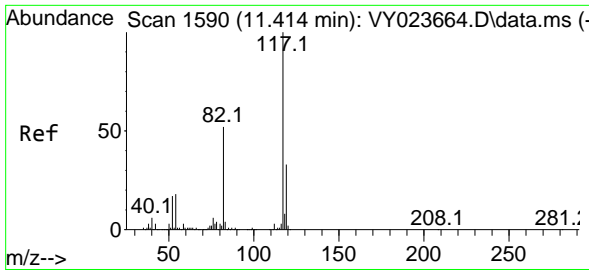


#62
 4-Bromofluorobenzene
 Concen: 44.832 ug/l
 RT: 12.407 min Scan# 1753
 Delta R.T. 0.006 min
 Lab File: VY023798.D
 Acq: 24 Nov 2025 18:22

Tgt Ion: 95 Resp: 331218

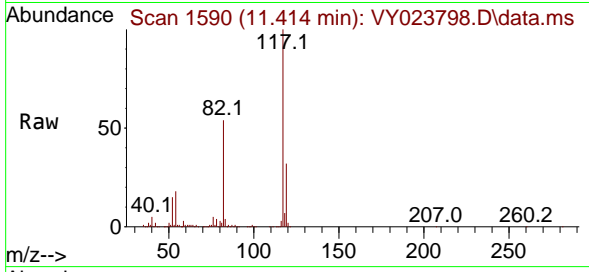
Ion	Ratio	Lower	Upper
95	100		
174	87.5	0.0	184.8
176	86.5	0.0	181.6





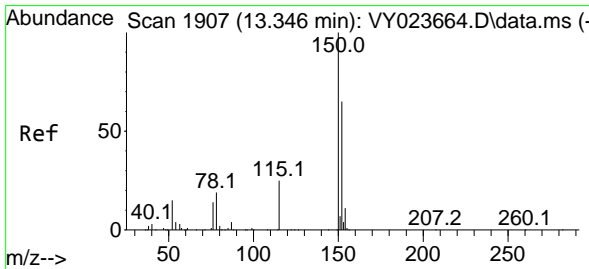
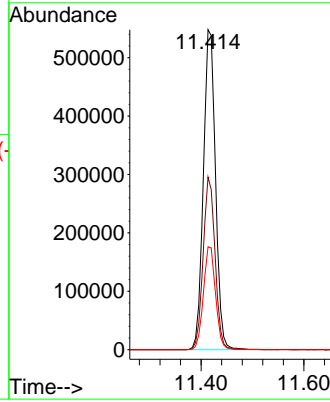
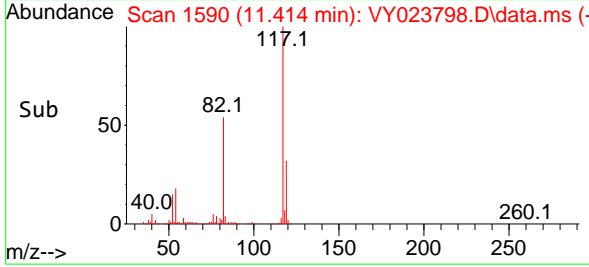
#63
 Chlorobenzene-d5
 Concen: 50.000 ug/l
 RT: 11.414 min Scan# 11
 Delta R.T. -0.000 min
 Lab File: VY023798.D
 Acq: 24 Nov 2025 18:22

Instrument : MSVOA_Y
 ClientSampleId : OR-03-11-24-2025

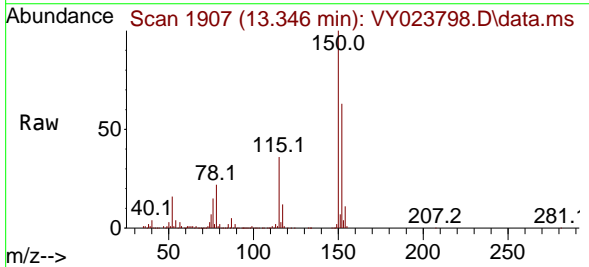


Tgt Ion:117 Resp: 897104

Ion	Ratio	Lower	Upper
117	100		
82	53.9	41.2	61.8
119	32.1	26.2	39.2

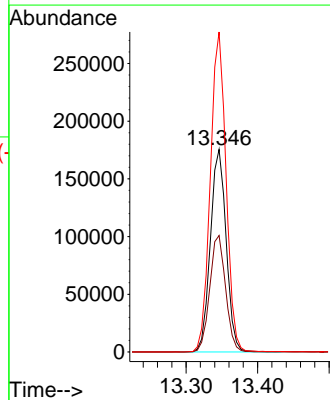
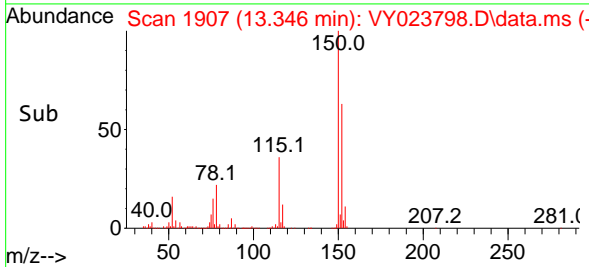


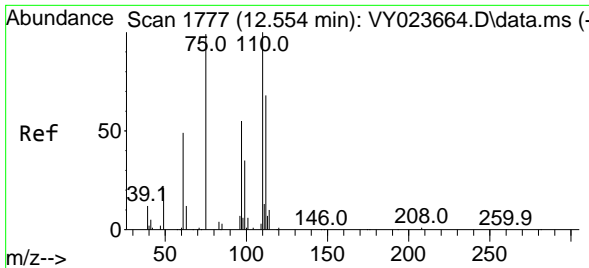
#72
 1,4-Dichlorobenzene-d4
 Concen: 50.000 ug/l
 RT: 13.346 min Scan# 1907
 Delta R.T. -0.000 min
 Lab File: VY023798.D
 Acq: 24 Nov 2025 18:22



Tgt Ion:152 Resp: 269469

Ion	Ratio	Lower	Upper
152	100		
115	57.9	27.5	82.5
150	157.3	0.0	349.0

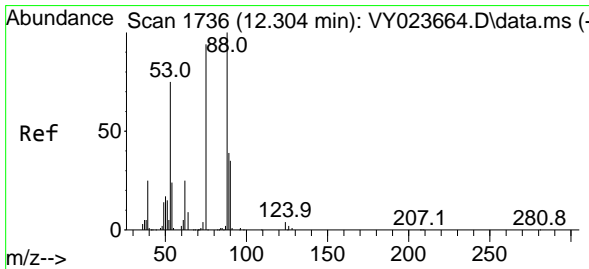
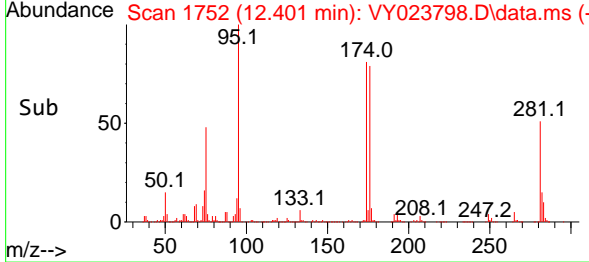
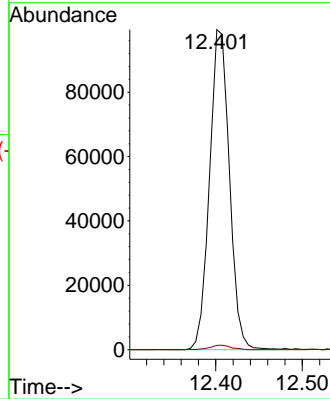
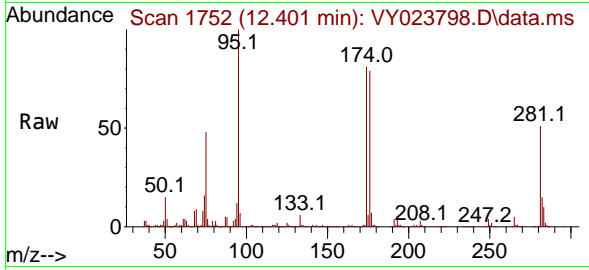




#76
 1,2,3-Trichloropropane
 Concen: 72.717 ug/l
 RT: 12.401 min Scan# 1752
 Delta R.T. -0.153 min
 Lab File: VY023798.D
 Acq: 24 Nov 2025 18:22

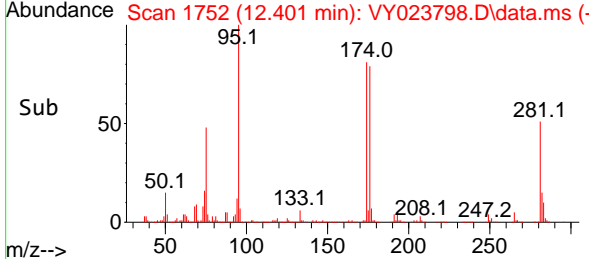
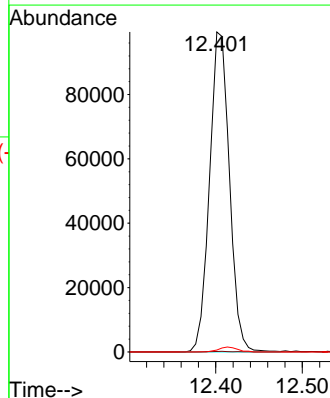
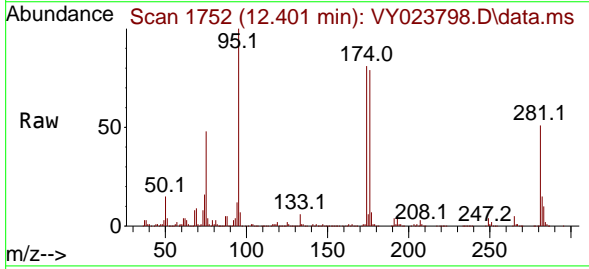
Instrument : MSVOA_Y
 ClientSampleId : OR-03-11-24-2025

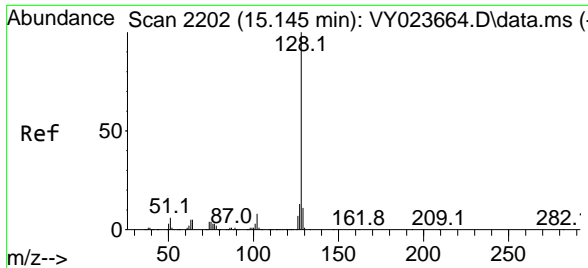
Tgt Ion: 75 Resp: 158585
 Ion Ratio Lower Upper
 75 100
 77 1.5 0.0 0.0#



#81
 trans-1,4-Dichloro-2-butene
 Concen: 164.337 ug/l
 RT: 12.401 min Scan# 1752
 Delta R.T. 0.097 min
 Lab File: VY023798.D
 Acq: 24 Nov 2025 18:22

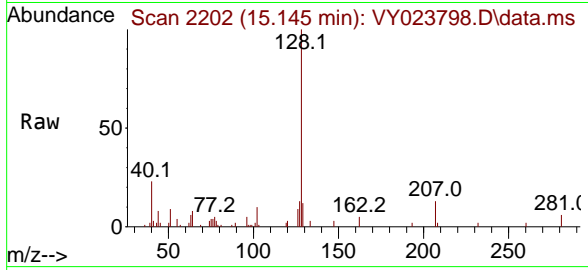
Tgt Ion: 75 Resp: 158585
 Ion Ratio Lower Upper
 75 100
 53 0.2 69.6 104.4#
 89 1.5 38.2 57.4#





#95
 Naphthalene
 Concen: 6.104 ug/l
 RT: 15.145 min Scan# 21
 Delta R.T. -0.000 min
 Lab File: VY023798.D
 Acq: 24 Nov 2025 18:22

Instrument : MSVOA_Y
 ClientSampleId : OR-03-11-24-2025



Tgt Ion:128 Resp: 7464

Ion	Ratio	Lower	Upper
128	100		
127	14.7	10.5	15.7
129	11.4	8.8	13.2

