

Data Path : Z:\voasrv\HPCHEM1\MSVOA_Y\Data\VY113022\
 Data File : VY011636.D
 Acq On : 30 Nov 2022 13:18
 Operator : KP/MD
 Sample : N5809-01
 Misc : 5.00g/5.0mL/MSVOA_Y/SOIL
 ALS Vial : 9 Sample Multiplier: 1

Instrument :
 MSVOA_Y
 ClientSampleId :
 HOWE-DRUM-A-1129

Quant Time: Dec 01 05:22:51 2022
 Quant Method : Z:\voasrv\HPCHEM1\MSVOA_Y\methods\82Y111822S.M
 Quant Title : SW846 8260
 QLast Update : Sat Nov 19 22:37:14 2022
 Response via : Initial Calibration

Compound	R.T.	QIon	Response	Conc	Units	Dev(Min)

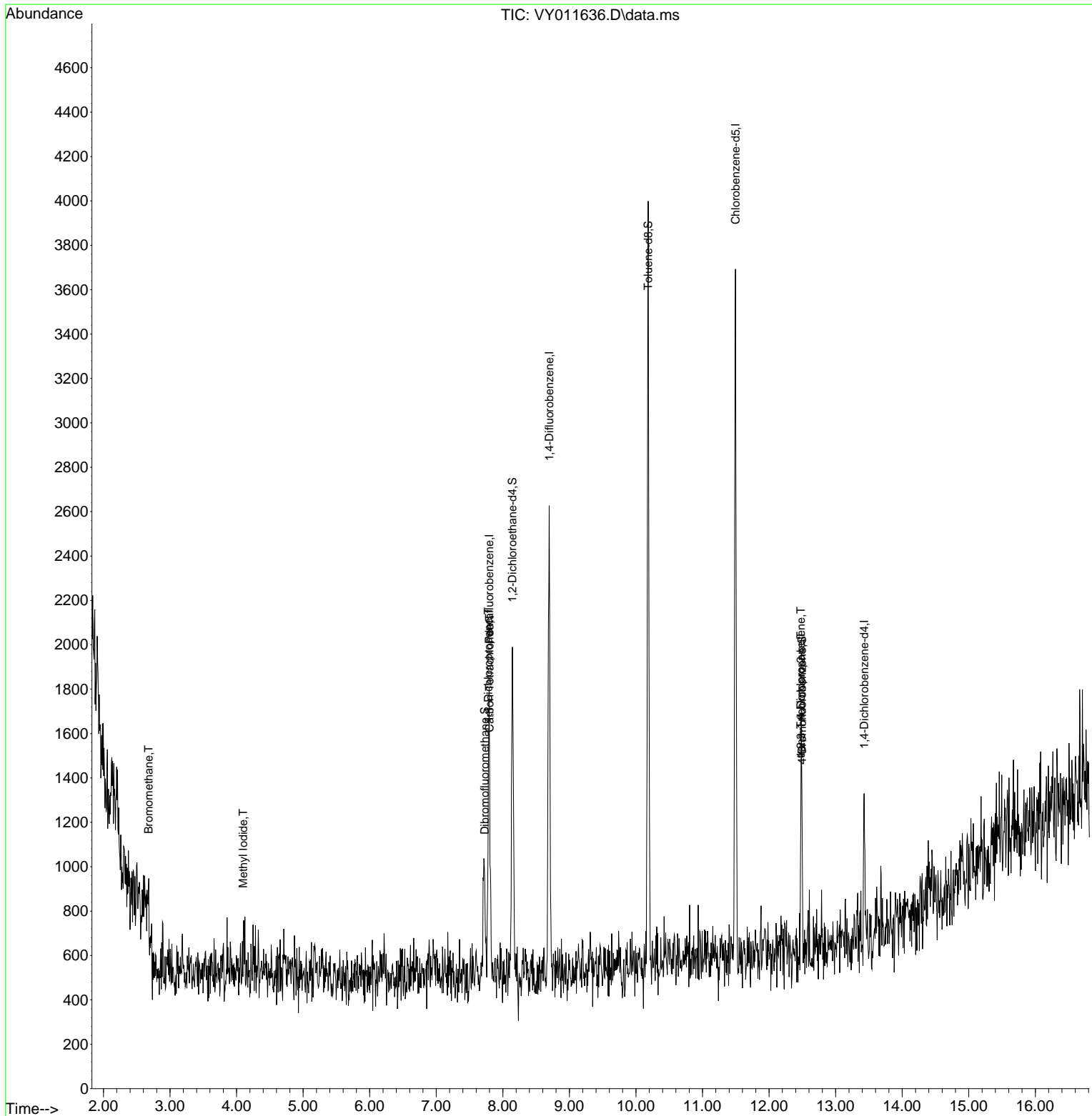
Internal Standards						
1) Pentafluorobenzene	7.795	168	1359	50.000	ug/l	# 0.00
34) 1,4-Difluorobenzene	8.697	114	2409	50.000	ug/l	0.00
63) Chlorobenzene-d5	11.496	117	1915	50.000	ug/l	0.00
72) 1,4-Dichlorobenzene-d4	13.428	152	312	50.000	ug/l	0.00
System Monitoring Compounds						
33) 1,2-Dichloroethane-d4	8.143	65	1254	90.875	ug/l	0.00
Spiked Amount	50.000	Range	50 - 163	Recovery	=	181.740%#
35) Dibromofluoromethane	7.728	113	463	31.221	ug/l	0.00
Spiked Amount	50.000	Range	54 - 147	Recovery	=	62.440%
50) Toluene-d8	10.185	98	2573	47.746	ug/l	0.00
Spiked Amount	50.000	Range	49 - 140	Recovery	=	95.500%
62) 4-Bromofluorobenzene	12.495	95	491	24.643	ug/l	0.01
Spiked Amount	50.000	Range	25 - 144	Recovery	=	49.280%
Target Compounds						
						Qvalue
5) Bromomethane	2.680	94	50	1.198	ug/l	# 4
10) Methyl Iodide	4.101	142	322	21.198	ug/l	# 35
36) 1,1-Dichloropropene	7.783	75	46	1.984	ug/l	# 42
38) Carbon Tetrachloride	7.801	117	40	1.542	ug/l	# 11
76) 1,2,3-Trichloropropane	12.477	75	189	56.250	ug/l	# 100
81) trans-1,4-Dichloro-2-b...	12.477	75	189	123.205	ug/l	# 7

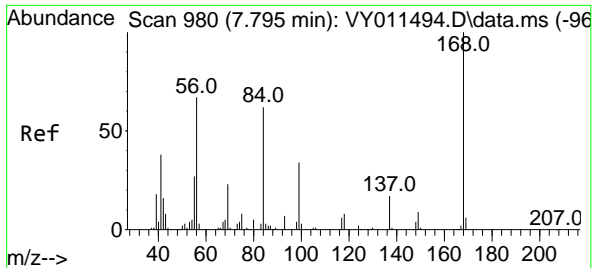
(#) = qualifier out of range (m) = manual integration (+) = signals summed

Data Path : Z:\voasrv\HPCHEM1\MSVOA_Y\Data\VY113022\
 Data File : VY011636.D
 Acq On : 30 Nov 2022 13:18
 Operator : KP/MD
 Sample : N5809-01
 Misc : 5.00g/5.0mL/MSVOA_Y/SOIL
 ALS Vial : 9 Sample Multiplier: 1

Instrument :
 MSVOA_Y
 ClientSampleId :
 HOWE-DRUM-A-1129

Quant Time: Dec 01 05:22:51 2022
 Quant Method : Z:\voasrv\HPCHEM1\MSVOA_Y\methods\82Y111822S.M
 Quant Title : SW846 8260
 QLast Update : Sat Nov 19 22:37:14 2022
 Response via : Initial Calibration

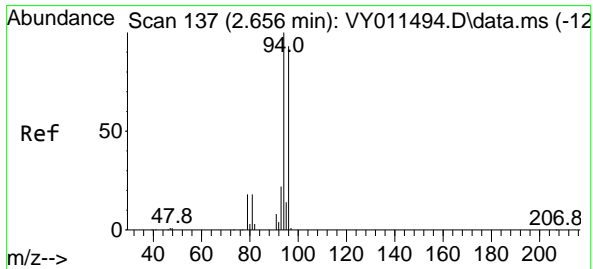
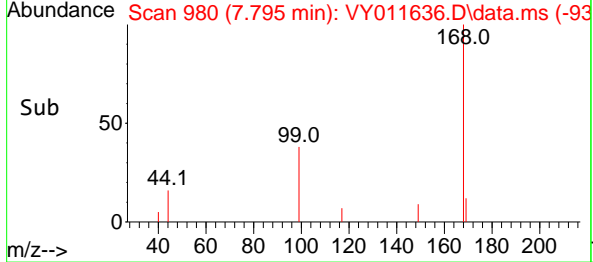
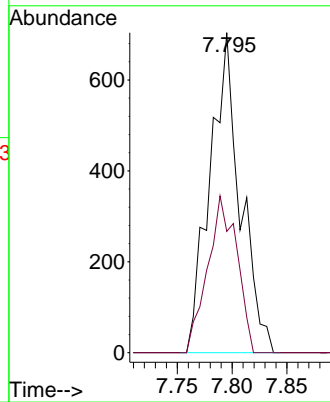
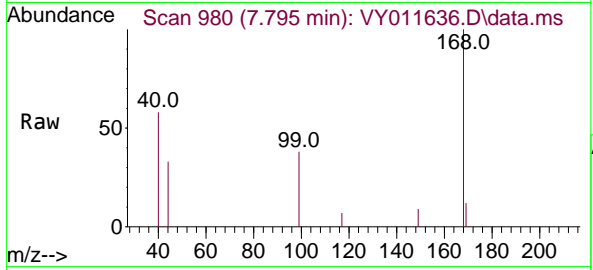




#1
 Pentafluorobenzene
 Concen: 50.000 ug/l
 RT: 7.795 min Scan# 91
 Delta R.T. 0.000 min
 Lab File: VY011636.D
 Acq: 30 Nov 2022 13:18

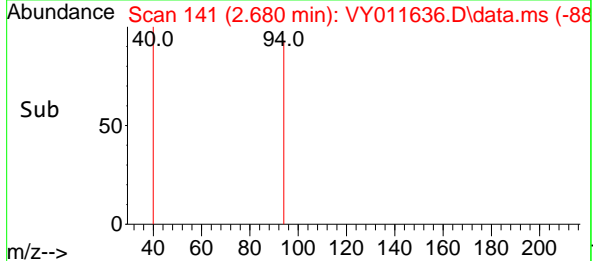
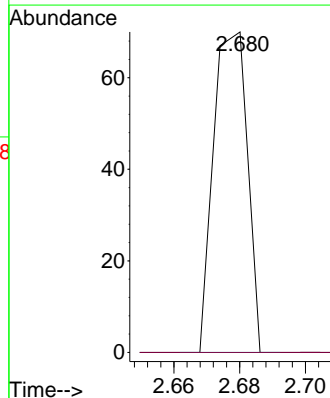
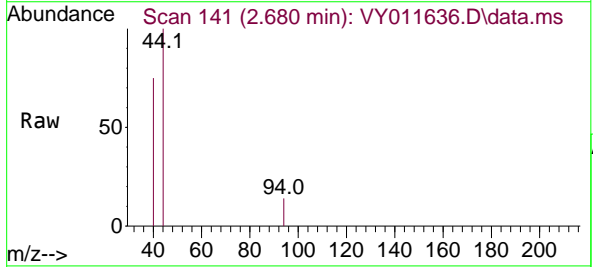
Instrument :
 MSVOA_Y
 ClientSampleId :
 HOWE-DRUM-A-1129

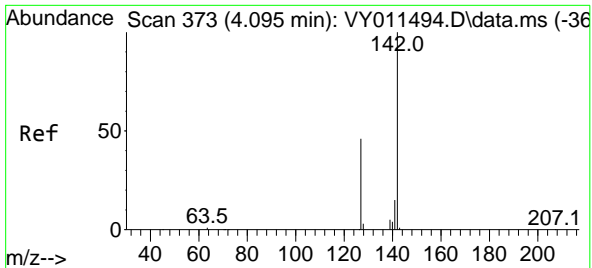
Tgt Ion:168 Resp: 1359
 Ion Ratio Lower Upper
 168 100
 99 37.9 46.9 70.3#



#5
 Bromomethane
 Concen: 1.198 ug/l
 RT: 2.680 min Scan# 141
 Delta R.T. 0.024 min
 Lab File: VY011636.D
 Acq: 30 Nov 2022 13:18

Tgt Ion: 94 Resp: 50
 Ion Ratio Lower Upper
 94 100
 96 0.0 73.5 110.3#

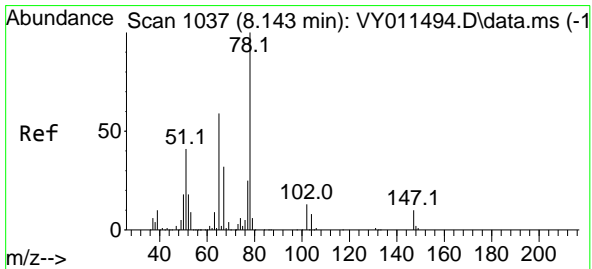
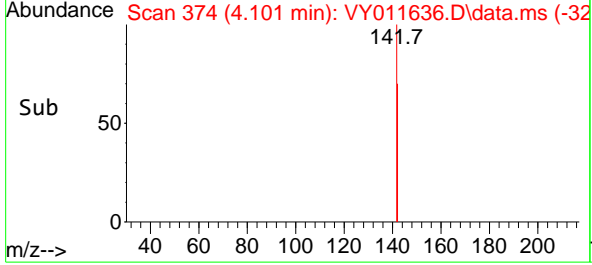
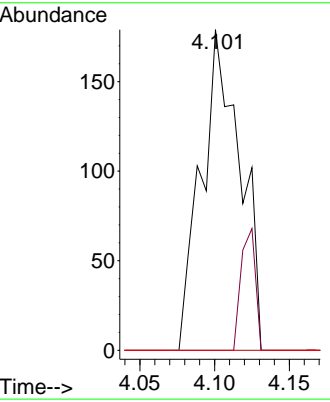
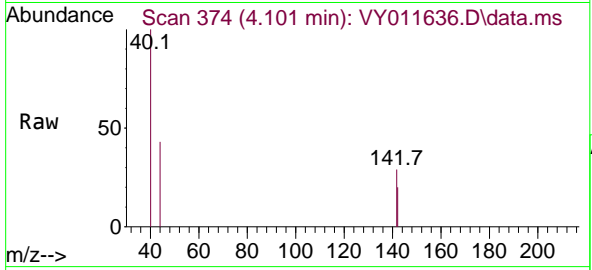




#10
 Methyl Iodide
 Concen: 21.198 ug/l
 RT: 4.101 min Scan# 31
 Delta R.T. 0.006 min
 Lab File: VY011636.D
 Acq: 30 Nov 2022 13:18

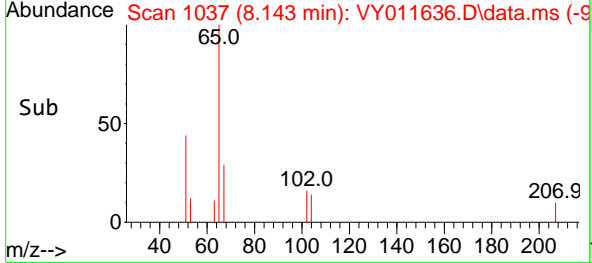
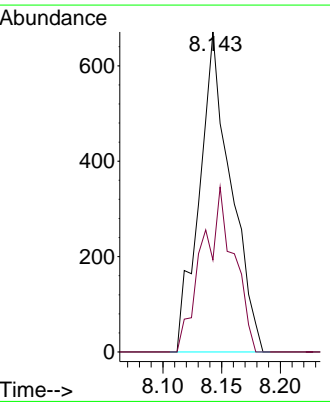
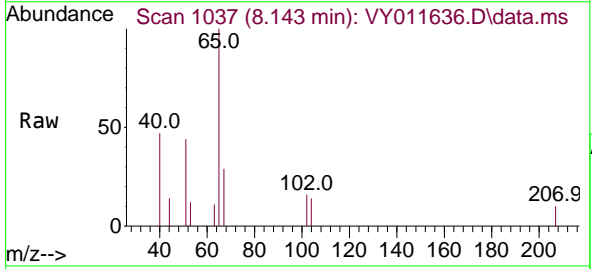
Instrument : MSVOA_Y
 ClientSampleId : HOWE-DRUM-A-1129

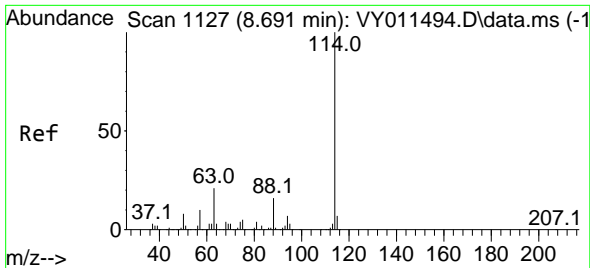
Tgt Ion	Resp	Lower	Upper
142	100		
127	0.0	41.5	62.3#
141	0.0	11.9	17.9#



#33
 1,2-Dichloroethane-d4
 Concen: 90.875 ug/l
 RT: 8.143 min Scan# 1037
 Delta R.T. -0.000 min
 Lab File: VY011636.D
 Acq: 30 Nov 2022 13:18

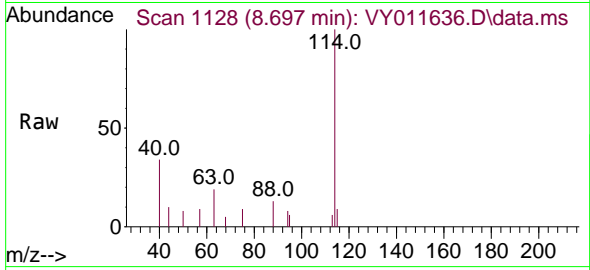
Tgt Ion	Resp	Lower	Upper
65	100		
67	51.9	0.0	99.4





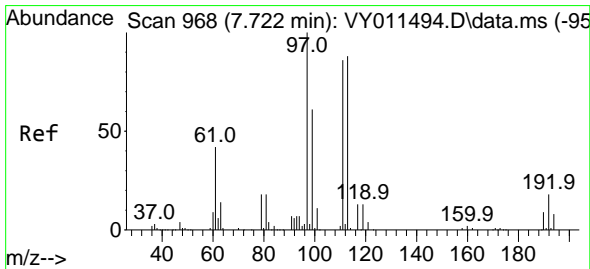
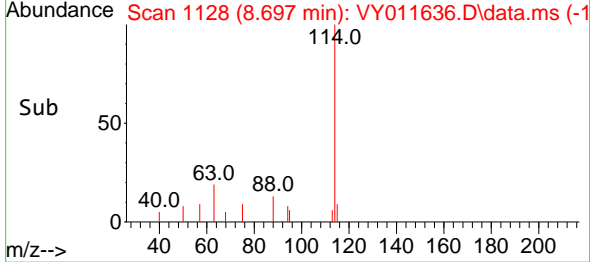
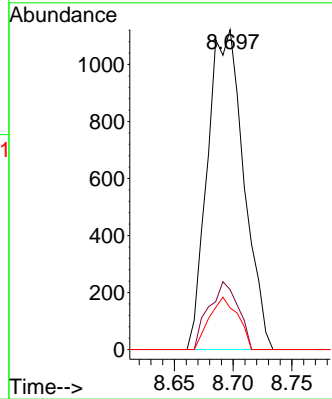
#34
 1,4-Difluorobenzene
 Concen: 50.000 ug/l
 RT: 8.697 min Scan# 1127
 Delta R.T. 0.006 min
 Lab File: VY011636.D
 Acq: 30 Nov 2022 13:18

Instrument : MSVOA_Y
 ClientSampleId : HOWE-DRUM-A-1129



Tgt Ion:114 Resp: 2409

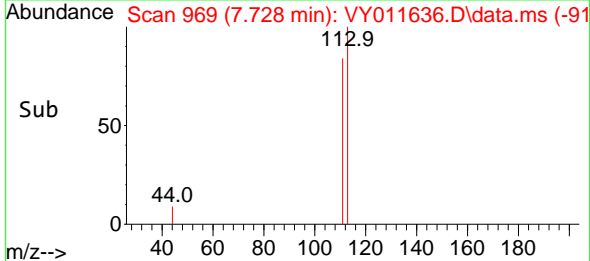
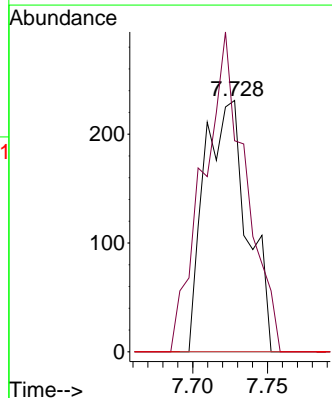
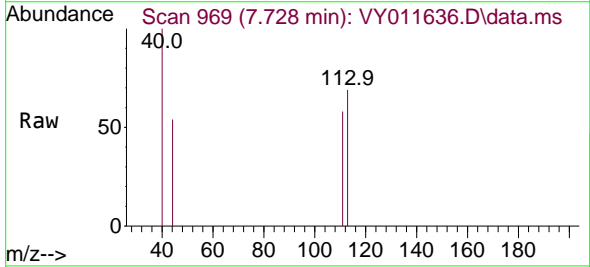
Ion	Ratio	Lower	Upper
114	100		
63	18.7	0.0	43.2
88	13.0	0.0	31.8

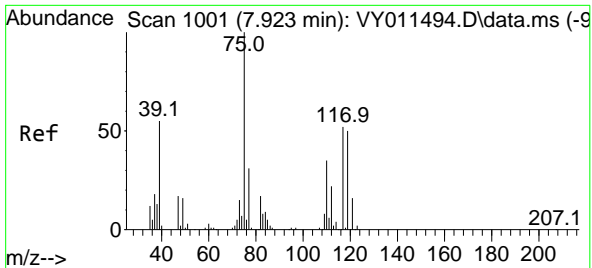


#35
 Dibromofluoromethane
 Concen: 31.221 ug/l
 RT: 7.728 min Scan# 969
 Delta R.T. 0.006 min
 Lab File: VY011636.D
 Acq: 30 Nov 2022 13:18

Tgt Ion:113 Resp: 463

Ion	Ratio	Lower	Upper
113	100		
111	126.1	82.6	124.0#
192	0.0	17.6	26.4#

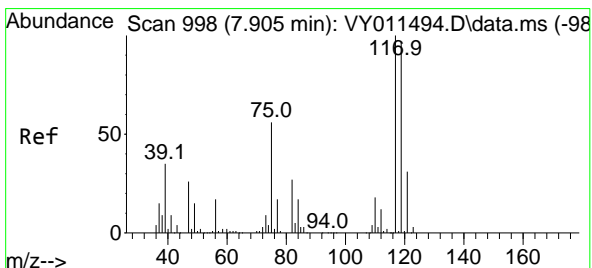
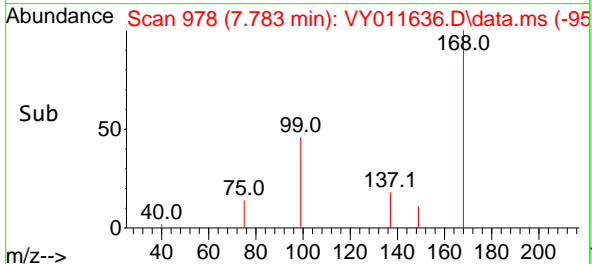
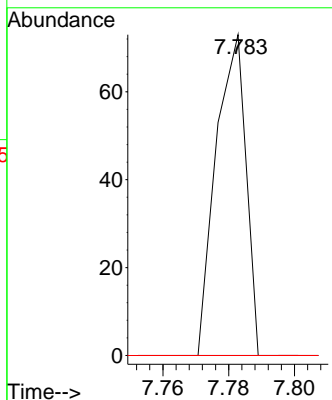
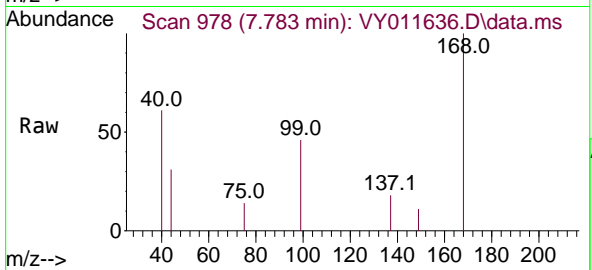




#36
 1,1-Dichloropropene
 Concen: 1.984 ug/l
 RT: 7.783 min Scan# 91
 Delta R.T. -0.140 min
 Lab File: VY011636.D
 Acq: 30 Nov 2022 13:18

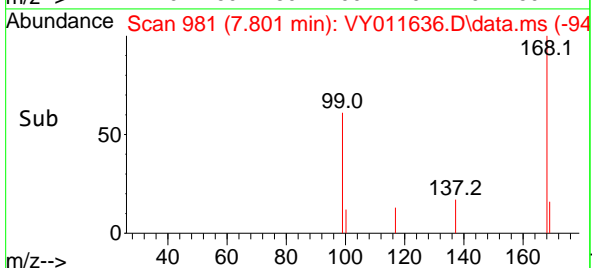
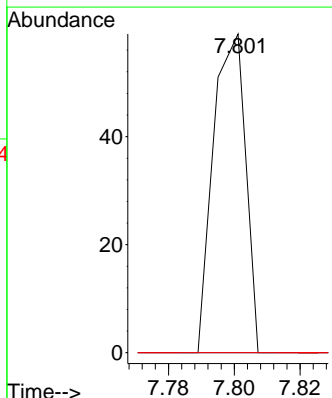
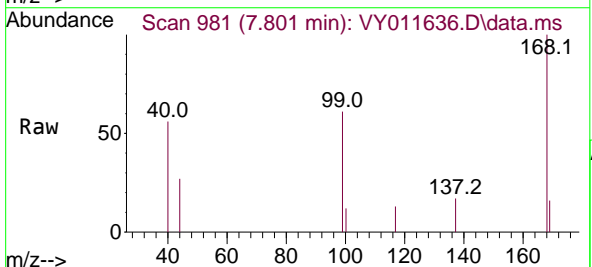
Instrument : MSVOA_Y
 ClientSampleId : HOWE-DRUM-A-1129

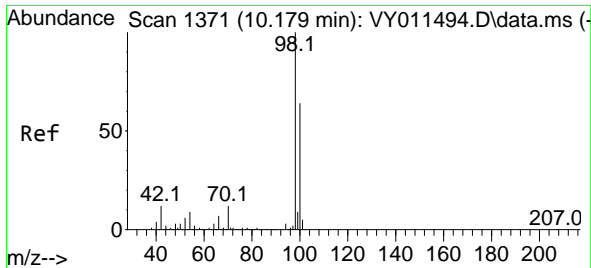
Tgt Ion: 75 Resp: 46
 Ion Ratio Lower Upper
 75 100
 110 0.0 17.1 51.2#
 77 0.0 24.4 36.6#



#38
 Carbon Tetrachloride
 Concen: 1.542 ug/l
 RT: 7.801 min Scan# 981
 Delta R.T. -0.104 min
 Lab File: VY011636.D
 Acq: 30 Nov 2022 13:18

Tgt Ion: 117 Resp: 40
 Ion Ratio Lower Upper
 117 100
 119 0.0 77.9 116.9#
 121 0.0 24.8 37.2#

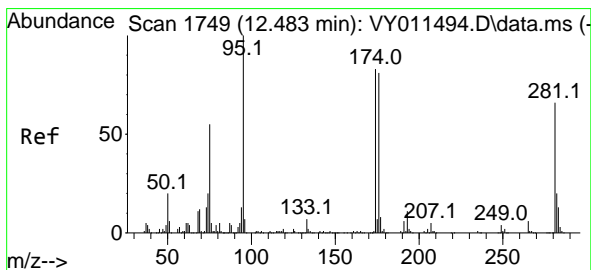
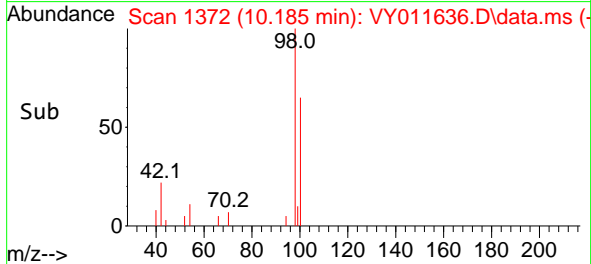
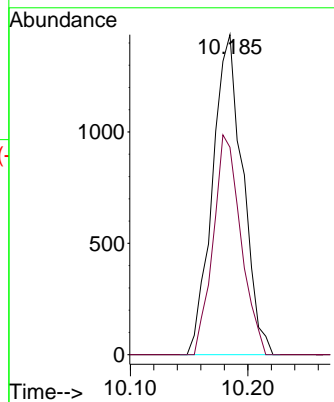
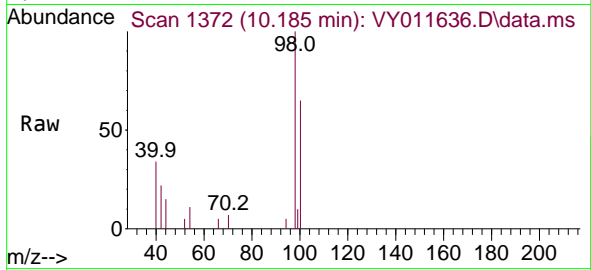




#50
 Toluene-d8
 Concen: 47.746 ug/l
 RT: 10.185 min Scan# 11
 Delta R.T. 0.006 min
 Lab File: VY011636.D
 Acq: 30 Nov 2022 13:18

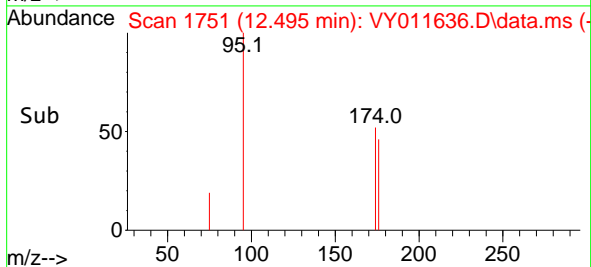
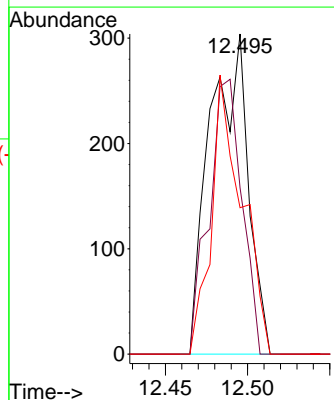
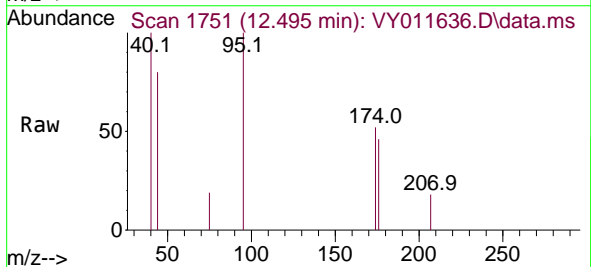
Instrument : MSVOA_Y
 ClientSampleId : HOWE-DRUM-A-1129

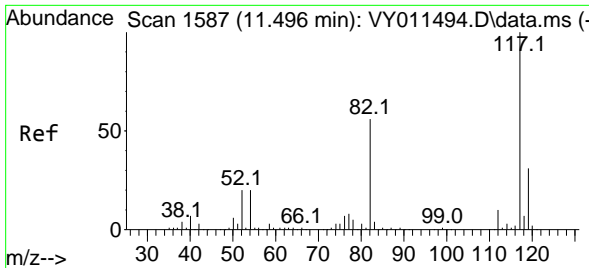
Tgt Ion: 98 Resp: 2573
 Ion Ratio Lower Upper
 98 100
 100 62.8 50.2 75.2



#62
 4-Bromofluorobenzene
 Concen: 24.643 ug/l
 RT: 12.495 min Scan# 1751
 Delta R.T. 0.012 min
 Lab File: VY011636.D
 Acq: 30 Nov 2022 13:18

Tgt Ion: 95 Resp: 491
 Ion Ratio Lower Upper
 95 100
 174 73.9 0.0 177.0
 176 69.7 0.0 175.8

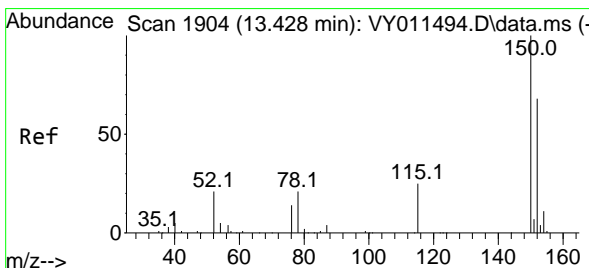
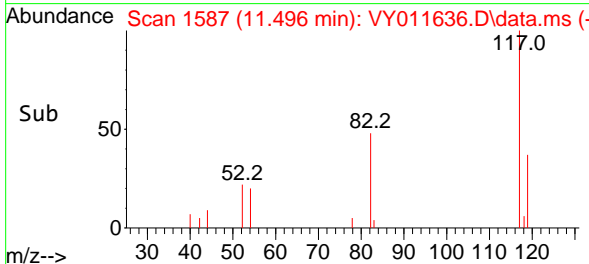
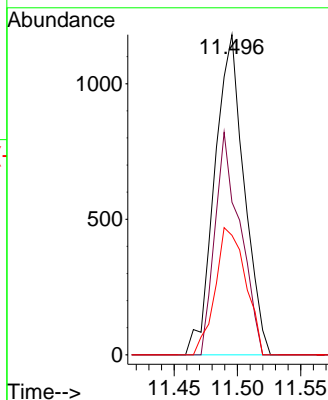
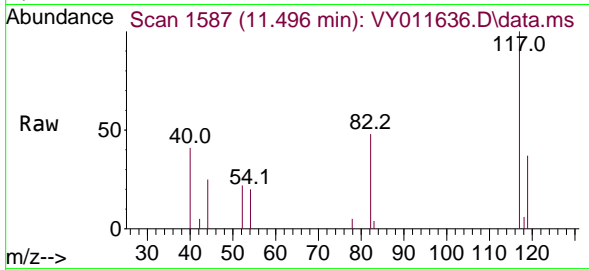




#63
 Chlorobenzene-d5
 Concen: 50.000 ug/l
 RT: 11.496 min Scan# 1117
 Delta R.T. -0.000 min
 Lab File: VY011636.D
 Acq: 30 Nov 2022 13:18

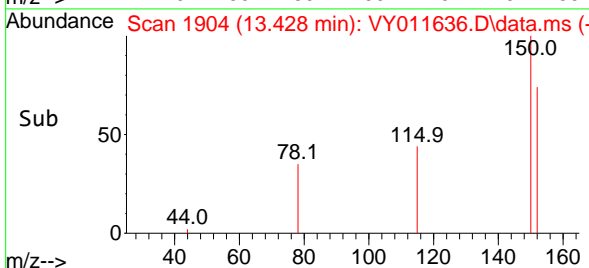
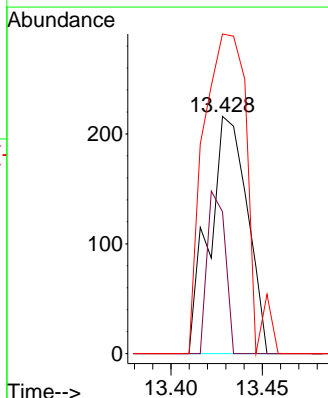
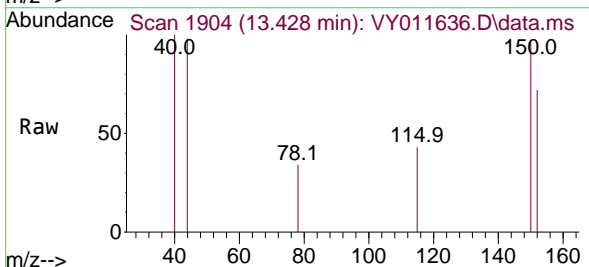
Instrument : MSVOA_Y
 ClientSampleId : HOWE-DRUM-A-1129

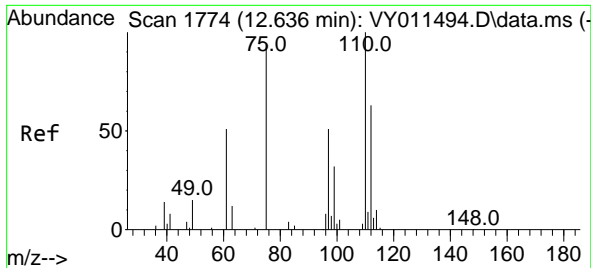
Tgt Ion	Resp	Ion Ratio	Lower	Upper
117	1915	100		
82	47.7	43.0	64.4	
119	37.3	25.4	38.0	



#72
 1,4-Dichlorobenzene-d4
 Concen: 50.000 ug/l
 RT: 13.428 min Scan# 1904
 Delta R.T. 0.000 min
 Lab File: VY011636.D
 Acq: 30 Nov 2022 13:18

Tgt Ion	Resp	Ion Ratio	Lower	Upper
152	312	100		
115	32.4	28.2	84.7	
150	154.5	0.0	347.6	

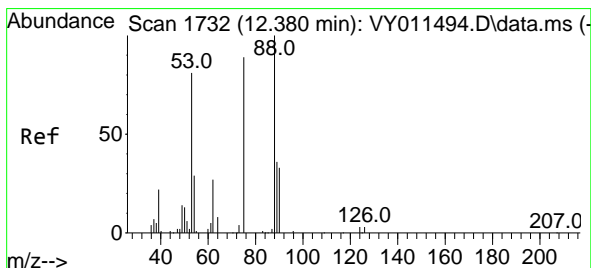
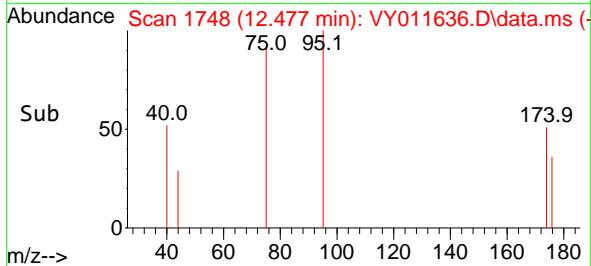
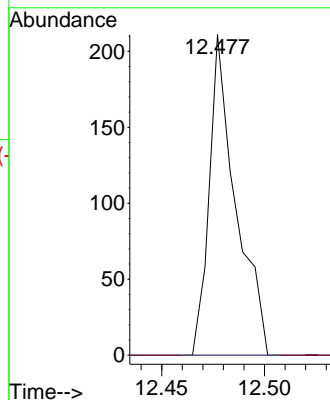
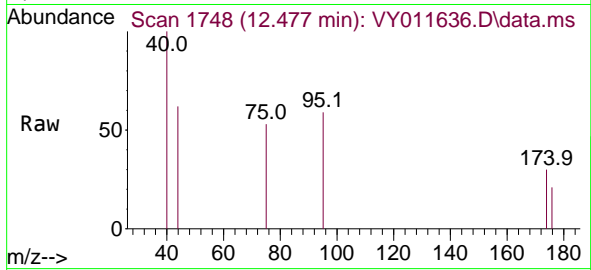




#76
 1,2,3-Trichloropropane
 Concen: 56.250 ug/l
 RT: 12.477 min Scan# 1748
 Delta R.T. -0.159 min
 Lab File: VY011636.D
 Acq: 30 Nov 2022 13:18

Instrument : MSVOA_Y
 ClientSampleId : HOWE-DRUM-A-1129

Tgt Ion: 75 Resp: 189
 Ion Ratio Lower Upper
 75 100
 77 0.0 0.0 0.0



#81
 trans-1,4-Dichloro-2-butene
 Concen: 123.205 ug/l
 RT: 12.477 min Scan# 1748
 Delta R.T. 0.097 min
 Lab File: VY011636.D
 Acq: 30 Nov 2022 13:18

Tgt Ion: 75 Resp: 189
 Ion Ratio Lower Upper
 75 100
 53 0.0 85.3 127.9#
 89 0.0 37.0 55.4#

