

Data Path : Z:\voasrv\HPCHEM1\MSVOA_Y\Data\VY120222\
 Data File : VY011675.D
 Acq On : 02 Dec 2022 12:05
 Operator : KP/MD
 Sample : VY1202SBL01
 Misc : 5.00g/5.0mL/MSVOA_Y/SOIL
 ALS Vial : 4 Sample Multiplier: 1

Instrument :
 MSVOA_Y
 ClientSampleId :
 VY1202SBL01

Integration Parameters: RTEINT.P

Integrator: RTE
 Smoothing : ON Filtering: 5
 Sampling : 1 Min Area: 3 % of largest Peak
 Start Thrs: 0.2 Max Peaks: 100
 Stop Thrs : 0 Peak Location: TOP

If leading or trailing edge < 100 prefer < Baseline drop else tangent >
 Peak separation: 5

Method : Z:\voasrv\HPCHEM1\MSVOA_Y\methods\82Y111822S.M
 Title : SW846 8260

Signal : TIC: VY011675.D\data.ms

peak #	R.T. min	first scan	max scan	last scan	PK TY	peak height	corr. area	corr. % max.	% of total
1	4.722	464	476	491	rVB	31537	99367	12.16%	1.823%
2	4.930	497	510	519	rBV	6629	24060	2.94%	0.441%
3	5.747	634	644	656	rBV2	8312	24718	3.02%	0.453%
4	6.978	834	846	859	rBV	33020	99020	12.11%	1.816%
5	7.722	957	968	973	rBV	137470	326421	39.93%	5.987%
6	7.789	973	979	992	rVB	213879	497361	60.84%	9.123%
7	8.136	1023	1036	1048	rBV2	152172	432617	52.92%	7.935%
8	8.691	1119	1127	1141	rBV	328523	652909	79.87%	11.976%
9	10.179	1363	1371	1379	rBV	475101	808742	98.93%	14.834%
10	10.581	1429	1437	1444	rBV	27902	50203	6.14%	0.921%
11	10.947	1489	1497	1507	rBV	23974	43462	5.32%	0.797%
12	11.319	1553	1558	1564	rVB2	13003	21581	2.64%	0.396%
13	11.489	1579	1586	1600	rBV	475599	765151	93.60%	14.034%
14	12.483	1741	1749	1758	rBV2	469077	817453	100.00%	14.994%
15	12.818	1798	1804	1809	rBV4	5651	10398	1.27%	0.191%
16	13.428	1897	1904	1912	rVB	460703	714564	87.41%	13.107%
17	13.965	1985	1992	1998	rBV	34041	52255	6.39%	0.958%
18	15.318	2205	2214	2220	rBV2	7057	11671	1.43%	0.214%

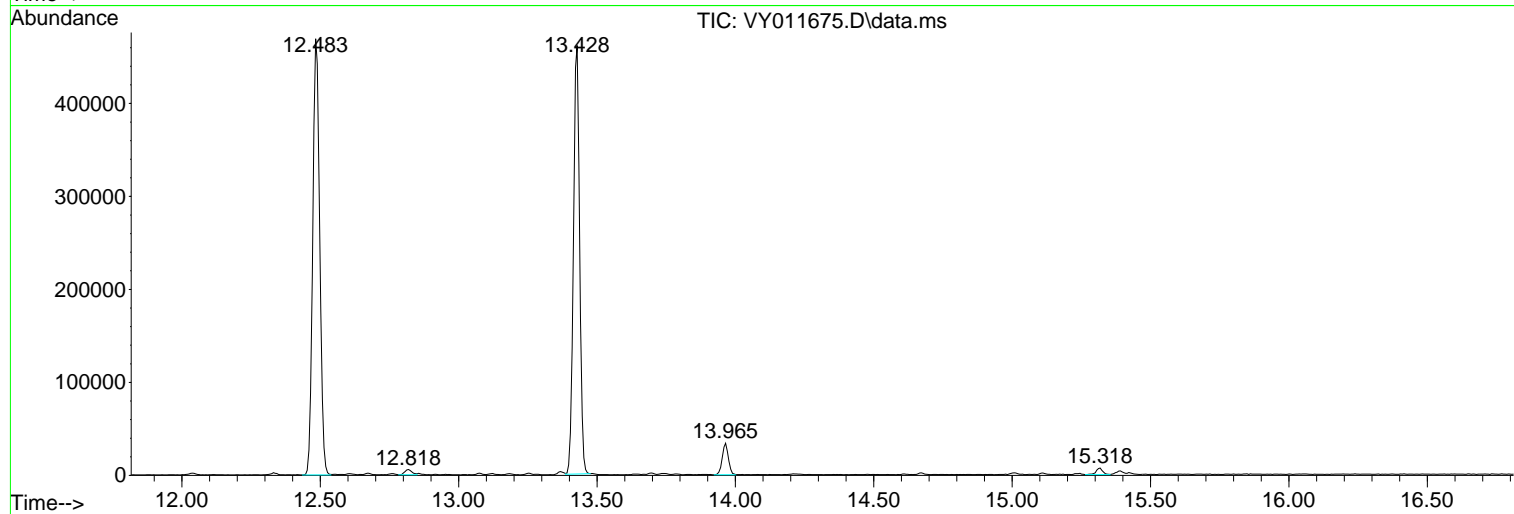
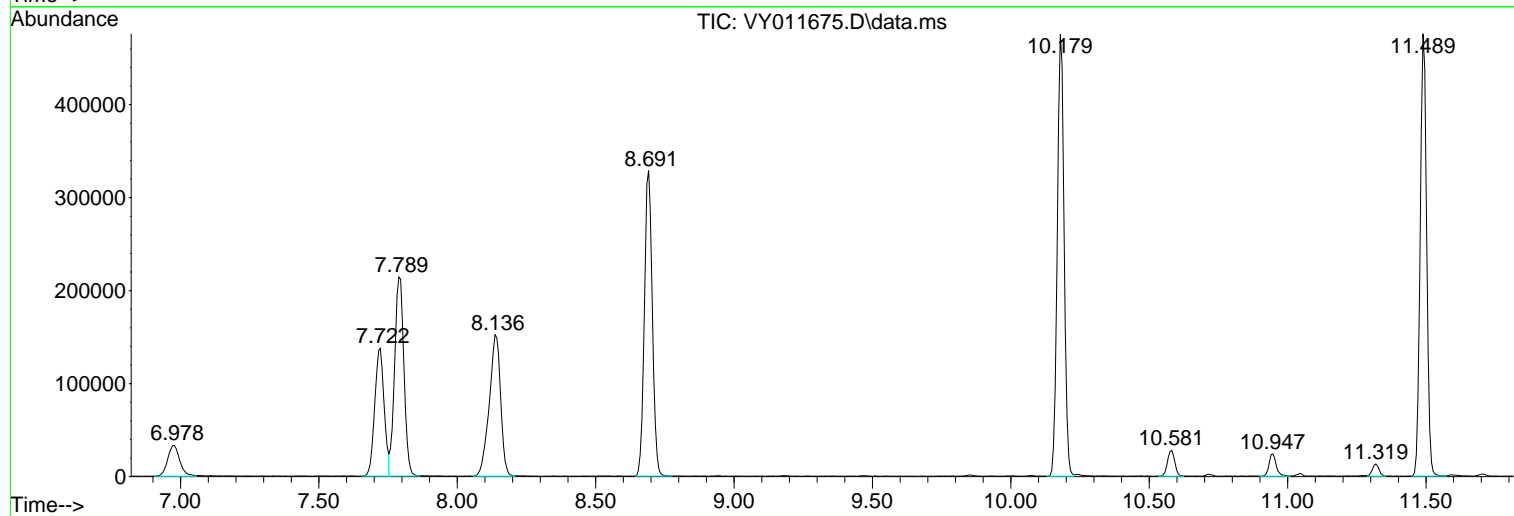
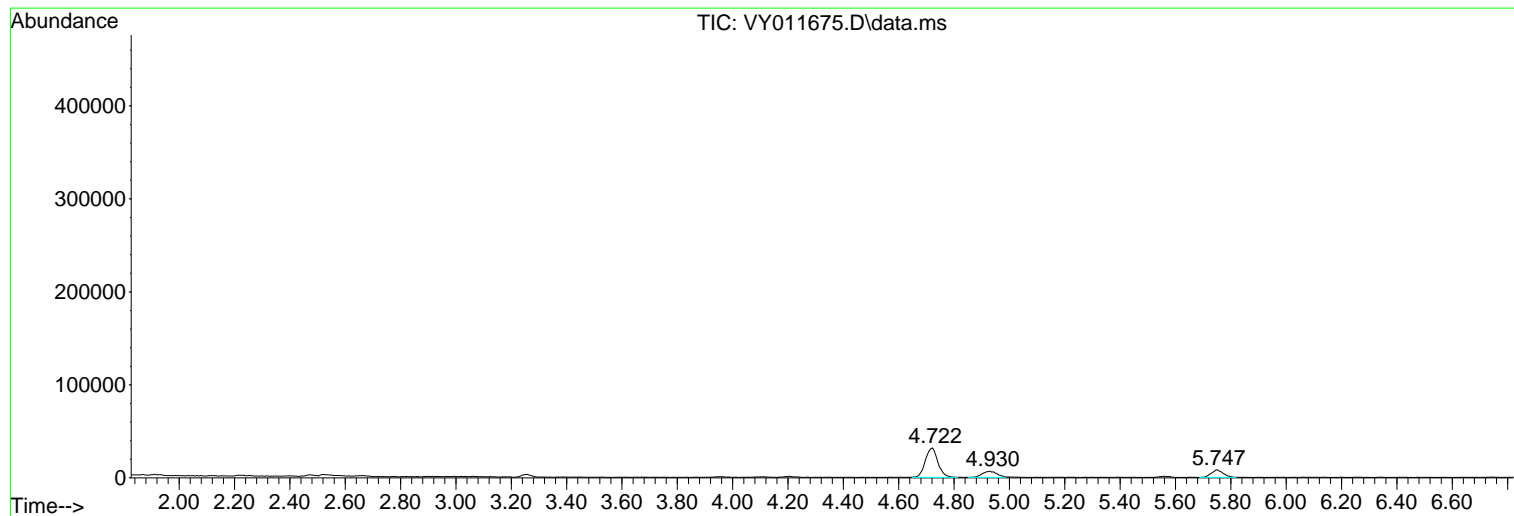
Sum of corrected areas: 5451953

Data Path : Z:\voasrv\HPCHEM1\MSVOA_Y\Data\VY120222\
Data File : VY011675.D
Acq On : 02 Dec 2022 12:05
Operator : KP/MD
Sample : VY1202SBL01
Misc : 5.00g/5.0mL/MSVOA_Y/SOIL
ALS Vial : 4 Sample Multiplier: 1

Instrument :
MSVOA_Y
ClientSampleId :
VY1202SBL01

Quant Method : Z:\voasrv\HPCHEM1\MSVOA_Y\methods\82Y111822S.M
Quant Title : SW846 8260

TIC Library : C:\Database\NIST20.L
TIC Integration Parameters: LSCINT.P



Library Search Compound Report

Data Path : Z:\voasrv\HPCHEM1\MSVOA_Y\Data\VY120222\
Data File : VY011675.D
Acq On : 02 Dec 2022 12:05
Operator : KP/MD
Sample : VY1202SBL01
Misc : 5.00g/5.0mL/MSVOA_Y/SOIL
ALS Vial : 4 Sample Multiplier: 1

Instrument :
MSVOA_Y
ClientSampleId :
VY1202SBL01

Quant Method : Z:\voasrv\HPCHEM1\MSVOA_Y\methods\82Y111822S.M
Quant Title : SW846 8260

TIC Library : C:\Database\NIST20.L
TIC Integration Parameters: LSCINT.P

No Library Search Compounds Detected

Data Path : Z:\voasrv\HPCHEM1\MSVOA_Y\Data\VY120222\
Data File : VY011675.D
Acq On : 02 Dec 2022 12:05
Operator : KP/MD
Sample : VY1202SBL01
Misc : 5.00g/5.0mL/MSVOA_Y/SOIL
ALS Vial : 4 Sample Multiplier: 1

Instrument :
MSVOA_Y
ClientSampleId :
VY1202SBL01

Quant Method : Z:\voasrv\HPCHEM1\MSVOA_Y\methods\82Y111822S.M
Quant Title : SW846 8260

TIC Library : C:\Database\NIST0.L
TIC Integration Parameters: LSCINT.P

TIC Top Hit name	RT	EstConc	Units	Response	--Internal Standard--			
					#	RT	Resp	Conc
