

Data Path : Z:\VOASRV\HPCHEM1\MSVOA Y\DATA\VY120320\  
 Data File : VY003652.D  
 Acq On : 03 Dec 2020 18:40  
 Operator : SY/MD  
 Sample : VY1203SBL07  
 Misc : 5.00G/10ML/MSVOA Y/SOIL  
 ALS Vial : 6 Sample Multiplier: 1

Instrument :  
 MSVOA\_Y  
 ClientSampleId :  
 VBLK426

Quant Time: Dec 04 00:40:09 2020  
 Quant Method : Z:\VOASRV\HPCHEM1\MSVOA\_Y\METHODS\SFAMYL120120SMA.M  
 Quant Title : VOC Analysis  
 QLast Update : Fri Dec 04 00:25:15 2020  
 Response via : Initial Calibration

Internal Standards	R.T.	QIon	Response	Conc	Units	Dev(Min)
1) 1,4-Difluorobenzene	8.70	114	221715	25.00	ug/L	0.00
28) Chlorobenzene-d5	11.49	117	208637	25.00	ug/L	0.00
58) 1,4-Dichlorobenzene-d4	13.42	152	102894	25.00	ug/L	0.00

System Monitoring Compounds

4) Vinyl Chloride-d3	2.25	65	53567	18.49	ug/L	0.00
Spiked Amount	25.000	Range	30 - 150	Recovery	=	73.96%
7) Chloroethane-d5	2.77	69	46284	20.59	ug/L	0.00
Spiked Amount	25.000	Range	30 - 150	Recovery	=	82.36%
11) 1,1-Dichloroethene-d2	3.86	63	88462	15.34	ug/L	0.00
Spiked Amount	25.000	Range	45 - 110	Recovery	=	61.36%
21) 2-Butanone-d5	6.90	46	61185	49.20	ug/L	0.00
Spiked Amount	50.000	Range	20 - 135	Recovery	=	98.40%
24) Chloroform-d	7.49	84	123622	21.98	ug/L	0.00
Spiked Amount	25.000	Range	40 - 150	Recovery	=	87.92%
26) 1,2-Dichloroethane-d4	8.15	65	70263	23.07	ug/L	0.00
Spiked Amount	25.000	Range	70 - 130	Recovery	=	92.28%
32) Benzene-d6	8.12	84	265009	22.35	ug/L	0.00
Spiked Amount	25.000	Range	20 - 135	Recovery	=	89.40%
36) 1,2-Dichloropropane-d6	9.12	67	82259	22.78	ug/L	0.00
Spiked Amount	25.000	Range	70 - 120	Recovery	=	91.12%
41) Toluene-d8	10.18	98	236461	22.32	ug/L	0.00
Spiked Amount	25.000	Range	30 - 130	Recovery	=	89.28%
43) trans-1,3-Dichloropropene-	10.43	79	37289	22.06	ug/L	0.00
Spiked Amount	25.000	Range	30 - 135	Recovery	=	88.24%
47) 2-Hexanone-d5	10.79	63	46326	48.01	ug/L	0.00
Spiked Amount	50.000	Range	20 - 135	Recovery	=	96.02%
56) 1,1,2,2-Tetrachloroethane-	12.56	84	69028	18.90	ug/L	0.00
Spiked Amount	25.000	Range	45 - 120	Recovery	=	75.60%
66) 1,2-Dichlorobenzene-d4	13.72	152	86823	23.78	ug/L	0.00
Spiked Amount	25.000	Range	75 - 120	Recovery	=	95.12%

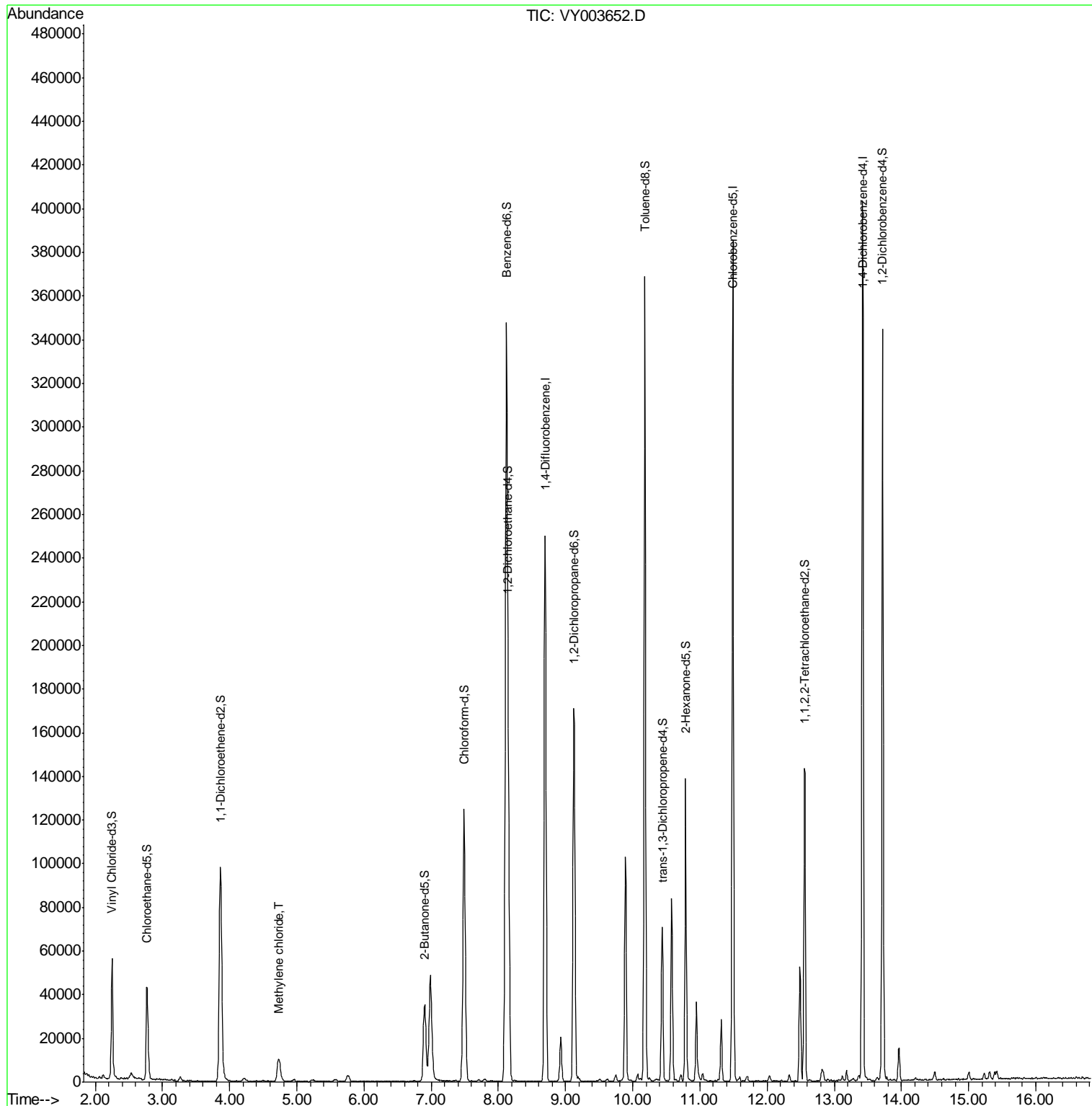
Target Compounds					Ovalue
16) Methylene chloride	4.72	84	8035	2.147 ug/L	97

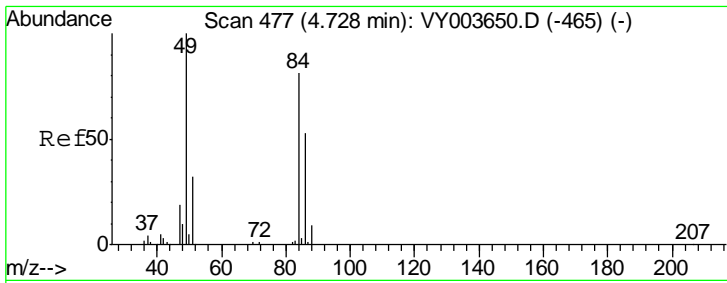
(#) = qualifier out of range (m) = manual integration (+) = signals summed

Data Path : Z:\VOASRV\HPCHEM1\MSVOA Y\DATA\VY120320\  
 Data File : VY003652.D  
 Acq On : 03 Dec 2020 18:40  
 Operator : SY/MD  
 Sample : VY1203SBL07  
 Misc : 5.00G/10ML/MSVOA Y/SOIL  
 ALS Vial : 6 Sample Multiplier: 1

Instrument :  
 MSVOA\_Y  
 ClientSampled :  
 VBLK426

Quant Time: Dec 04 00:40:09 2020  
 Quant Method : Z:\VOASRV\HPCHEM1\MSVOA\_Y\METHODS\SFAMYL120120SMA.M  
 Quant Title : VOC Analysis  
 QLast Update : Fri Dec 04 00:25:15 2020  
 Response via : Initial Calibration





#16  
 Methylene chloride  
 Concen: 2.147 ug/L  
 RT: 4.72 min Scan# 476  
 Delta R.T. -0.01 min  
 Lab File: VY003652.D  
 Acq: 03 Dec 2020 18:40

Instrument :  
 MSVOA\_Y  
 ClientSampled :  
 VBLK426

Tot Ion: 84 Resp: 8035

Ion	Ratio	Lower	Upper
84	100		
86	60.5	43.3	80.3
49	117.5	85.3	158.5

