

Data Path : Z:\VOASRV\HPCHEM1\MSVOA\_Y\DATA\VY120420\  
 Data File : VY003661.D  
 Acq On : 04 Dec 2020 12:48  
 Operator : SY/MD  
 Sample : VSTD10082  
 Misc : 5.00G/10ML/MSVOA\_Y/SOIL  
 ALS Vial : 7 Sample Multiplier: 1

Instrument :  
 MSVOA\_Y  
 ClientSampleId :  
 VSTD10081

Quant Time: Dec 04 13:04:00 2020  
 Quant Method : Z:\VOASRV\HPCHEM1\MSVOA\_Y\METHODS\SOM2YLM120420S.M  
 Quant Title : VOC Analysis  
 QLast Update : Fri Dec 04 12:43:00 2020  
 Response via : Initial Calibration

| Internal Standards         | R.T.  | QIon | Response | Conc  | Units | Dev(Min) |
|----------------------------|-------|------|----------|-------|-------|----------|
| 1) 1,4-Difluorobenzene     | 8.70  | 114  | 254667   | 25.00 | ug/L  | 0.00     |
| 28) Chlorobenzene-d5       | 11.49 | 117  | 244631   | 25.00 | ug/L  | 0.00     |
| 60) 1,4-Dichlorobenzene-d4 | 13.42 | 152  | 130550   | 25.00 | ug/L  | 0.00     |

## System Monitoring Compounds

|                                |       |     |         |        |      |      |
|--------------------------------|-------|-----|---------|--------|------|------|
| 4) Vinyl Chloride-d3           | 2.25  | 65  | 356235  | 115.25 | ug/L | 0.00 |
| 7) Chloroethane-d5             | 2.77  | 69  | 260564  | 95.88  | ug/L | 0.00 |
| 10) 1,1-Dichloroethene-d2      | 3.86  | 63  | 677940  | 95.96  | ug/L | 0.00 |
| 20) 2-Butanone-d5              | 6.90  | 46  | 243165  | 176.66 | ug/L | 0.00 |
| 24) Chloroform-d               | 7.49  | 84  | 643431  | 97.50  | ug/L | 0.00 |
| 26) 1,2-Dichloroethane-d4      | 8.15  | 65  | 358867  | 97.37  | ug/L | 0.00 |
| 29) Benzene-d6                 | 8.12  | 84  | 1380749 | 95.33  | ug/L | 0.00 |
| 33) 1,2-Dichloropropane-d6     | 9.12  | 67  | 410587  | 96.83  | ug/L | 0.00 |
| 37) Toluene-d8                 | 10.18 | 98  | 1264121 | 97.43  | ug/L | 0.00 |
| 38) trans-1,3-Dichloropropene- | 10.44 | 79  | 207368  | 98.06  | ug/L | 0.00 |
| 39) 2-Hexanone-d5              | 10.79 | 63  | 205079  | 189.41 | ug/L | 0.00 |
| 48) 1,1,2,2-Tetrachloroethane- | 12.56 | 84  | 359314  | 96.78  | ug/L | 0.00 |
| 61) 1,2-Dichlorobenzene-d4     | 13.72 | 152 | 454407  | 103.46 | ug/L | 0.00 |

## Target Compounds

| Target Compounds               | R.T.  | QIon | Response | Conc    | Units | Qvalue |
|--------------------------------|-------|------|----------|---------|-------|--------|
| 2) Dichlorodifluoromethane     | 1.91  | 85   | 298066   | 177.652 | ug/L  | 100    |
| 3) Chloromethane               | 2.12  | 50   | 315116   | 108.824 | ug/L  | 100    |
| 5) Vinyl chloride              | 2.26  | 62   | 332379   | 99.358  | ug/L  | 99     |
| 6) Bromomethane                | 2.65  | 94   | 217319   | 84.923  | ug/L  | 98     |
| 8) Chloroethane                | 2.80  | 64   | 197786   | 87.946  | ug/L  | 97     |
| 9) Trichlorofluoromethane      | 3.13  | 101  | 508587   | 141.173 | ug/L  | 99     |
| 11) 1,1,2-Trichloro-1,2,2-trif | 3.91  | 101  | 327577   | 97.562  | ug/L  | 98     |
| 12) 1,1-Dichloroethene         | 3.88  | 96   | 315166   | 91.488  | ug/L  | 99     |
| 13) Acetone                    | 3.96  | 43   | 175656   | 174.788 | ug/L  | 98     |
| 14) Carbon disulfide           | 4.20  | 76   | 1032045  | 90.735  | ug/L  | 99     |
| 15) Methyl Acetate             | 4.49  | 43   | 233596   | 91.922  | ug/L  | 100    |
| 16) Methylene chloride         | 4.73  | 84   | 351121   | 81.109  | ug/L  | 98     |
| 17) Methyl tert-butyl Ether    | 5.23  | 73   | 921522   | 149.527 | ug/L  | 99     |
| 18) trans-1,2-Dichloroethene   | 5.23  | 96   | 347434   | 95.035  | ug/L  | 99     |
| 19) 1,1-Dichloroethane         | 6.03  | 63   | 581616   | 94.587  | ug/L  | 98     |
| 21) 2-Butanone                 | 7.00  | 43   | 307492   | 182.047 | ug/L  | 98     |
| 22) cis-1,2-Dichloroethene     | 7.00  | 96   | 375341   | 99.397  | ug/L  | 99     |
| 23) Bromochloromethane         | 7.34  | 128  | 182577   | 99.373  | ug/L  | 96     |
| 25) Chloroform                 | 7.51  | 83   | 590119   | 95.945  | ug/L  | 100    |
| 27) 1,2-Dichloroethane         | 8.25  | 62   | 398225   | 95.651  | ug/L  | 98     |
| 30) Cyclohexane                | 7.79  | 56   | 564318   | 97.284  | ug/L  | 99     |
| 31) 1,1,1-Trichloroethane      | 7.71  | 97   | 522604   | 98.761  | ug/L  | 100    |
| 32) Carbon tetrachloride       | 7.91  | 117  | 471789   | 94.698  | ug/L  | 99     |
| 34) Benzene                    | 8.17  | 78   | 1382674  | 91.383  | ug/L  | 100    |
| 35) Trichloroethene            | 8.94  | 95   | 380350   | 97.783  | ug/L  | 99     |
| 36) Methylcyclohexane          | 9.19  | 83   | 614470   | 100.836 | ug/L  | 99     |
| 40) 1,2-Dichloropropane        | 9.22  | 63   | 351287   | 93.794  | ug/L  | 99     |
| 41) Bromodichloromethane       | 9.50  | 83   | 454097   | 95.266  | ug/L  | 98     |
| 42) cis-1,3-Dichloropropene    | 9.93  | 75   | 577910   | 98.070  | ug/L  | 98     |
| 43) 4-Methyl-2-pentanone       | 10.08 | 43   | 670906   | 209.666 | ug/L  | 100    |

Data Path : Z:\VOASRV\HPCHEM1\MSVOA\_Y\DATA\VY120420\  
 Data File : VY003661.D  
 Acq On : 04 Dec 2020 12:48  
 Operator : SY/MD  
 Sample : VSTD10082  
 Misc : 5.00G/10ML/MSVOA\_Y/SOIL  
 ALS Vial : 7 Sample Multiplier: 1

Instrument :  
 MSVOA\_Y  
 ClientSampleId :  
 VSTD10081

Quant Time: Dec 04 13:04:00 2020  
 Quant Method : Z:\VOASRV\HPCHEM1\MSVOA\_Y\METHODS\SOM2YLM120420S.M  
 Quant Title : VOC Analysis  
 QLast Update : Fri Dec 04 12:43:00 2020  
 Response via : Initial Calibration

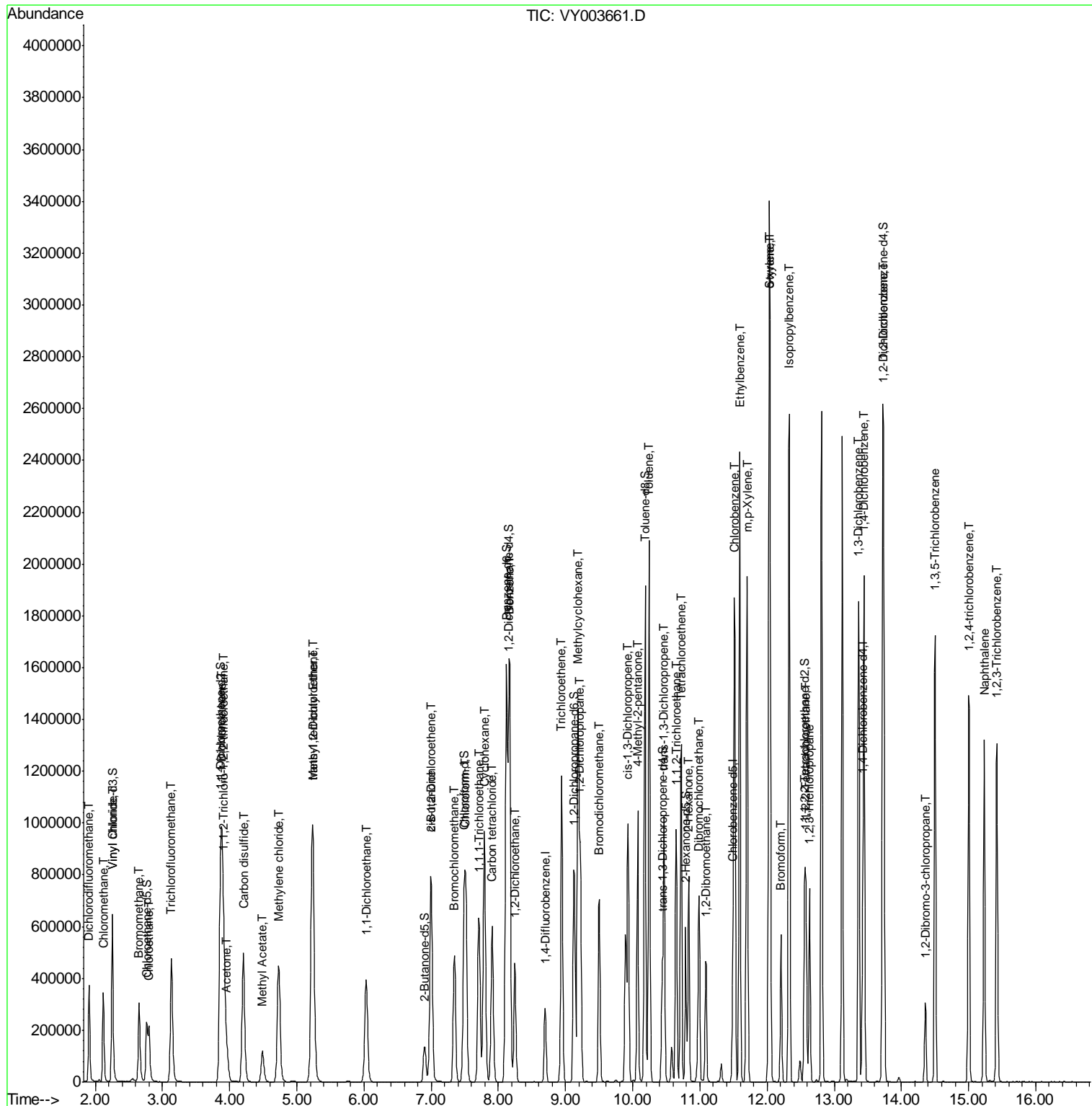
| Internal Standards             | R.T.  | QIon | Response | Conc    | Units | Dev(Min) |
|--------------------------------|-------|------|----------|---------|-------|----------|
| 44) Toluene                    | 10.25 | 91   | 1504853  | 94.208  | ug/L  | 98       |
| 45) trans-1,3-Dichloropropene  | 10.47 | 75   | 535251   | 98.133  | ug/L  | 100      |
| 46) 1,1,2-Trichloroethane      | 10.65 | 97   | 298844   | 98.591  | ug/L  | 98       |
| 47) Tetrachloroethene          | 10.72 | 164  | 298551   | 90.578  | ug/L  | 96       |
| 49) 2-Hexanone                 | 10.83 | 43   | 483351   | 195.158 | ug/L  | 99       |
| 50) Dibromochloromethane       | 10.98 | 129  | 359880   | 98.735  | ug/L  | 99       |
| 51) 1,2-Dibromoethane          | 11.09 | 107  | 299875   | 99.662  | ug/L  | 99       |
| 52) Chlorobenzene              | 11.51 | 112  | 971047   | 94.788  | ug/L  | 100      |
| 53) Ethylbenzene               | 11.59 | 91   | 1659346  | 100.538 | ug/L  | 98       |
| 54) m,p-Xylene                 | 11.70 | 106  | 645458   | 101.047 | ug/L  | 97       |
| 55) o-xylene                   | 12.03 | 106  | 614776   | 112.630 | ug/L  | 97       |
| 56) Styrene                    | 12.04 | 104  | 1087833  | 104.212 | ug/L  | 98       |
| 57) Isopropylbenzene           | 12.33 | 105  | 1639661  | 128.062 | ug/L  | 99       |
| 58) 1,1,2,2-Tetrachloroethane  | 12.58 | 83   | 326218   | 92.675  | ug/L  | 96       |
| 59) 1,2,3-Trichloropropane     | 12.64 | 75   | 289242   | 102.499 | ug/L  | 100      |
| 62) Bromoform                  | 12.21 | 173  | 249774   | 95.593  | ug/L  | 99       |
| 63) 1,3-Dichlorobenzene        | 13.37 | 146  | 763156   | 94.002  | ug/L  | 98       |
| 64) 1,4-Dichlorobenzene        | 13.45 | 146  | 765010   | 91.213  | ug/L  | 98       |
| 65) 1,2-Dichlorobenzene        | 13.74 | 146  | 703507   | 102.429 | ug/L  | 98       |
| 66) 1,2-Dibromo-3-chloropropan | 14.35 | 75   | 67246    | 111.950 | ug/L  | 97       |
| 67) 1,3,5-Trichlorobenzene     | 14.50 | 180  | 529511   | 115.174 | ug/L  | 100      |
| 68) 1,2,4-trichlorobenzene     | 15.01 | 180  | 469841   | 119.121 | ug/L  | 99       |
| 69) Naphthalene                | 15.23 | 128  | 1070694  | 146.098 | ug/L  | 100      |
| 70) 1,2,3-Trichlorobenzene     | 15.42 | 180  | 431943   | 137.236 | ug/L  | 99       |

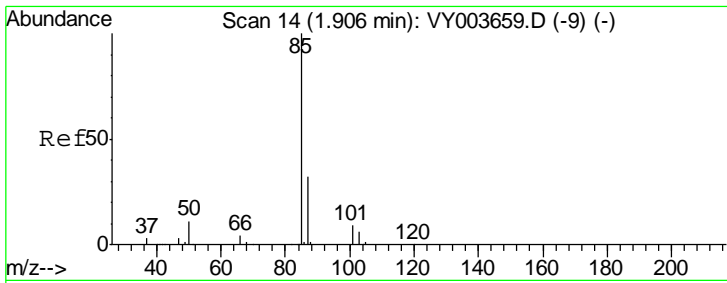
(#) = qualifier out of range (m) = manual integration (+) = signals summed

Data Path : Z:\VOASRV\HPCHEM1\MSVOA\_Y\DATA\VY120420\  
 Data File : VY003661.D  
 Acq On : 04 Dec 2020 12:48  
 Operator : SY/MD  
 Sample : VSTD10082  
 Misc : 5.00G/10ML/MSVOA\_Y/SOIL  
 ALS Vial : 7 Sample Multiplier: 1

Instrument :  
 MSVOA\_Y  
 Client Sampled :  
 VSTD10081

Quant Time: Dec 04 13:04:00 2020  
 Quant Method : Z:\VOASRV\HPCHEM1\MSVOA\_Y\METHODS\SOM2YLM120420S.M  
 Quant Title : VOC Analysis  
 QLast Update : Fri Dec 04 12:43:00 2020  
 Response via : Initial Calibration

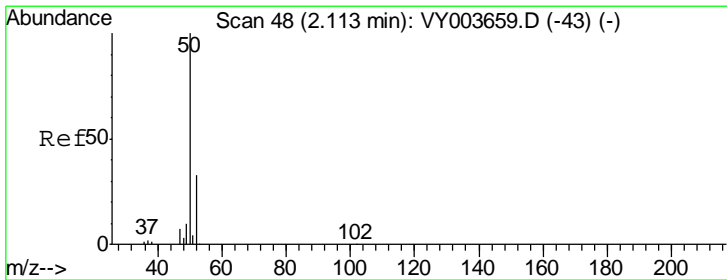
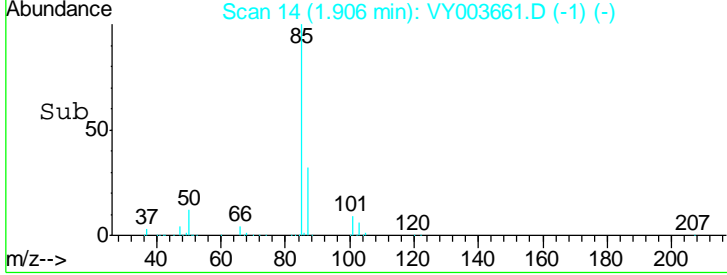
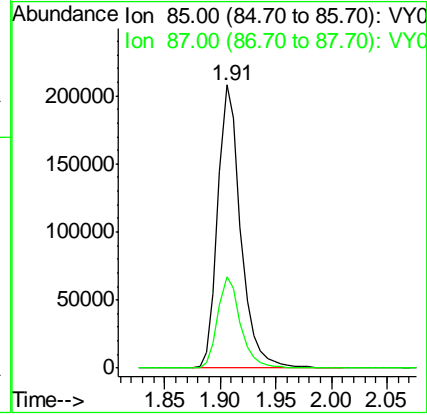
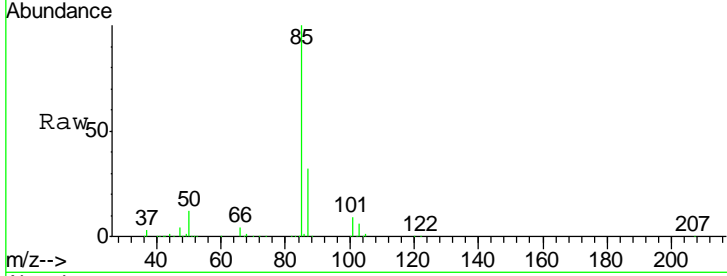




#2  
 Dichlorodifluoromethane  
 Concen: 177.652 ug/L  
 RT: 1.91 min Scan# 14  
 Delta R.T. -0.00 min  
 Lab File: VY003661.D  
 Acq: 04 Dec 2020 12:48

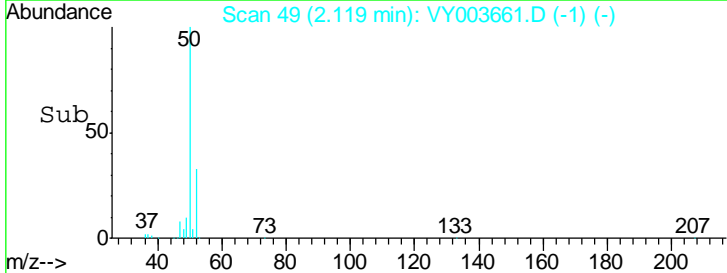
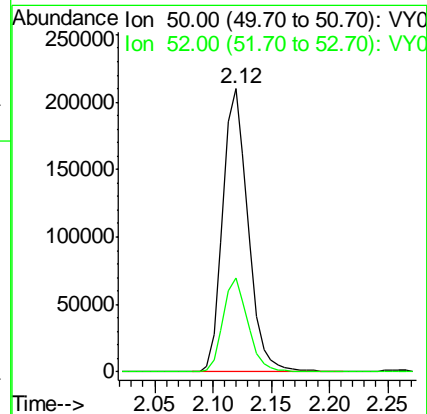
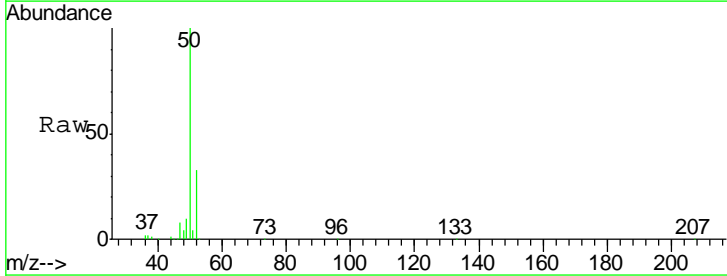
Instrument :  
 MSVOA\_Y  
 ClientSampled :  
 VSTD10081

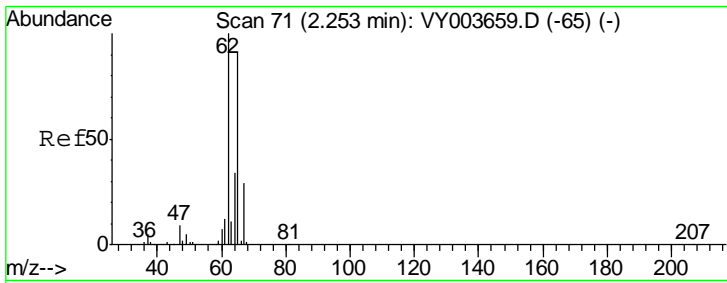
Tgt Ion: 85 Resp: 298066  
 Ion Ratio Lower Upper  
 85 100  
 87 32.3 22.6 42.0



#3  
 Chloromethane  
 Concen: 108.824 ug/L  
 RT: 2.12 min Scan# 49  
 Delta R.T. 0.01 min  
 Lab File: VY003661.D  
 Acq: 04 Dec 2020 12:48

Tgt Ion: 50 Resp: 315116  
 Ion Ratio Lower Upper  
 50 100  
 52 33.2 23.1 42.9

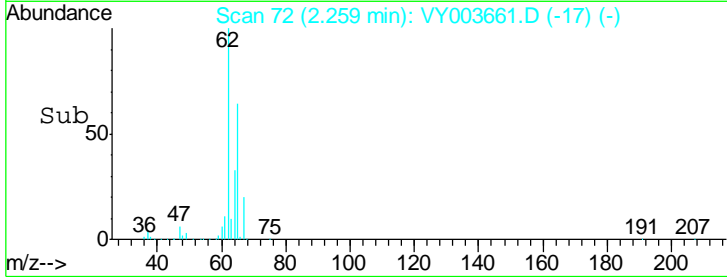
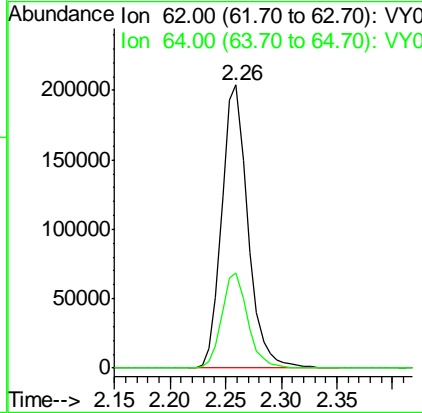
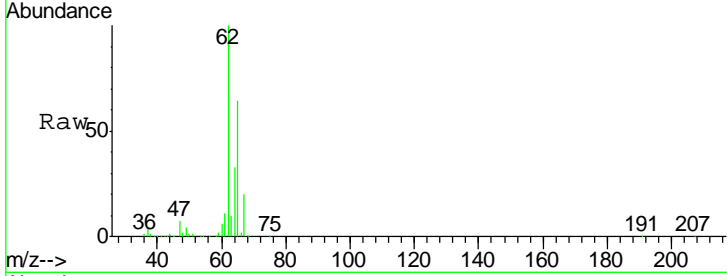




#5  
 Vinyl chloride  
 Concen: 99.358 ug/L  
 RT: 2.26 min Scan# 72  
 Delta R.T. 0.01 min  
 Lab File: VY003661.D  
 Acq: 04 Dec 2020 12:48

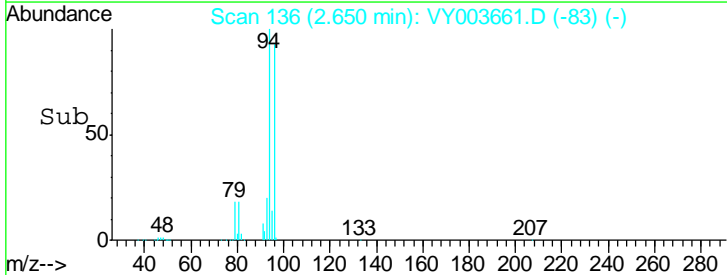
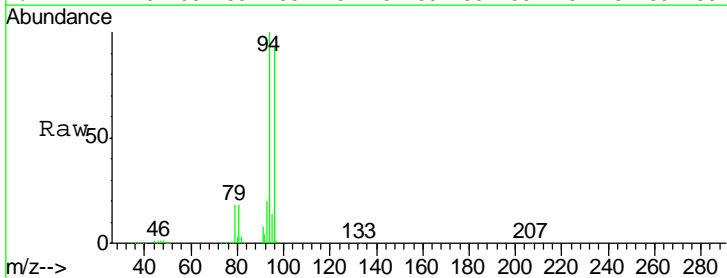
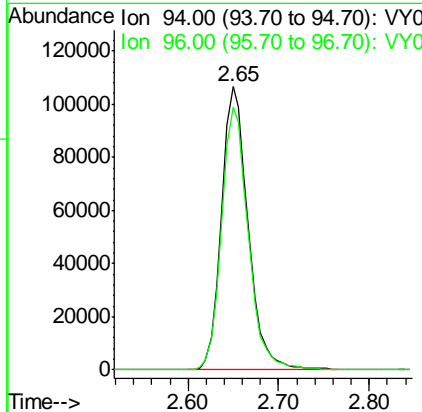
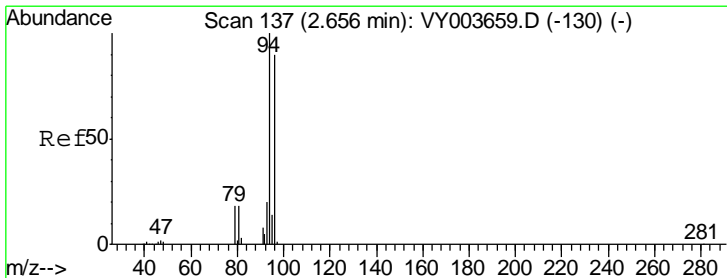
**Instrument :**  
 MSVOA\_Y  
**ClientSampled :**  
 VSTD10081

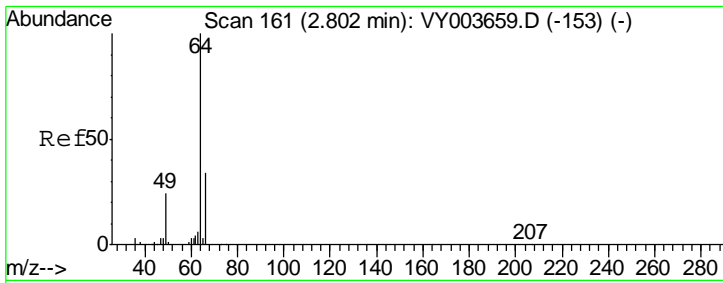
Tgt Ion: 62 Resp: 332379  
 Ion Ratio Lower Upper  
 62 100  
 64 33.5 23.8 44.2



#6  
 Bromomethane  
 Concen: 84.923 ug/L  
 RT: 2.65 min Scan# 136  
 Delta R.T. -0.01 min  
 Lab File: VY003661.D  
 Acq: 04 Dec 2020 12:48

Tgt Ion: 94 Resp: 217319  
 Ion Ratio Lower Upper  
 94 100  
 96 93.9 9.2 174.6

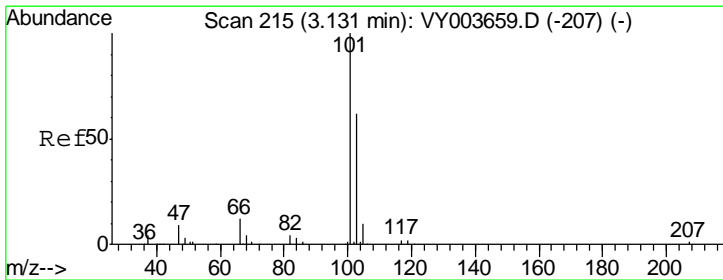
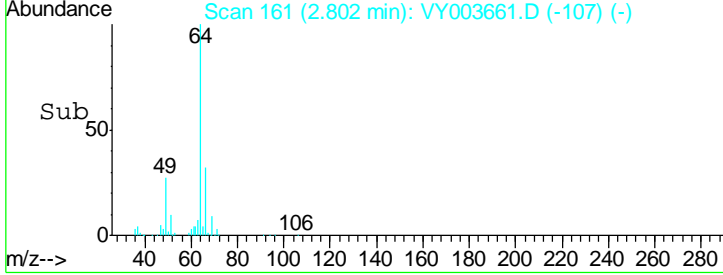
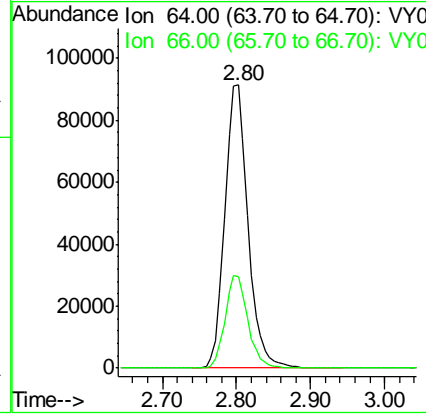
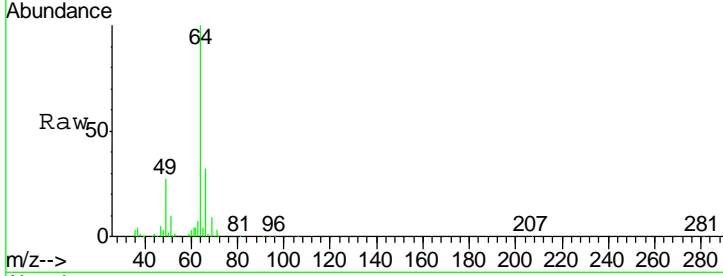




#8  
 Chloroethane  
 Concen: 87.946 ug/L  
 RT: 2.80 min Scan# 161  
 Delta R.T. -0.00 min  
 Lab File: VY003661.D  
 Acq: 04 Dec 2020 12:48

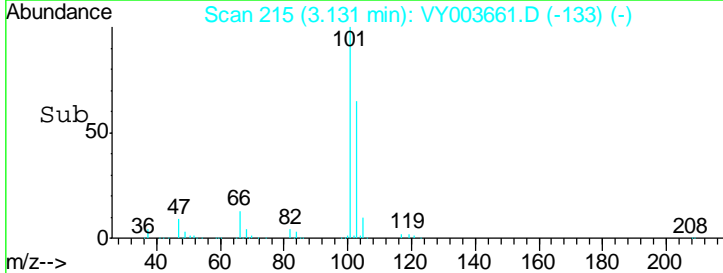
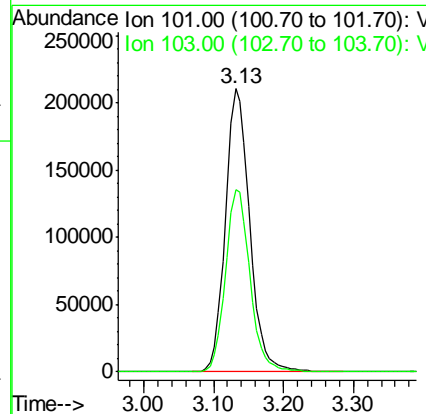
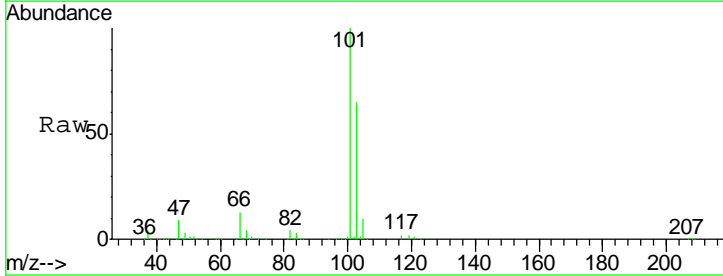
Instrument :  
 MSVOA\_Y  
 ClientSampled :  
 VSTD10081

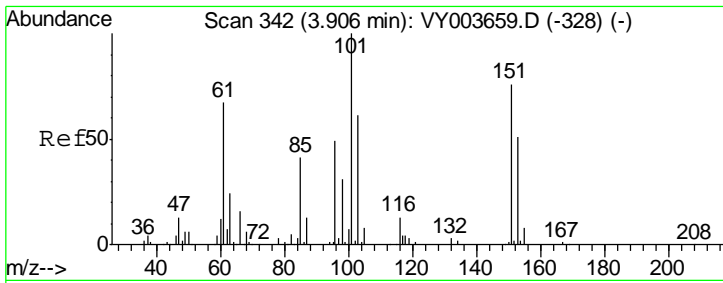
Tgt Ion: 64 Resp: 197786  
 Ion Ratio Lower Upper  
 64 100  
 66 32.5 23.8 44.2



#9  
 Trichlorofluoromethane  
 Concen: 141.173 ug/L  
 RT: 3.13 min Scan# 215  
 Delta R.T. -0.00 min  
 Lab File: VY003661.D  
 Acq: 04 Dec 2020 12:48

Tgt Ion: 101 Resp: 508587  
 Ion Ratio Lower Upper  
 101 100  
 103 64.9 45.1 83.7

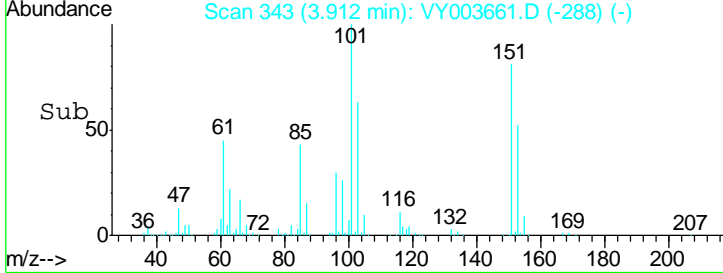
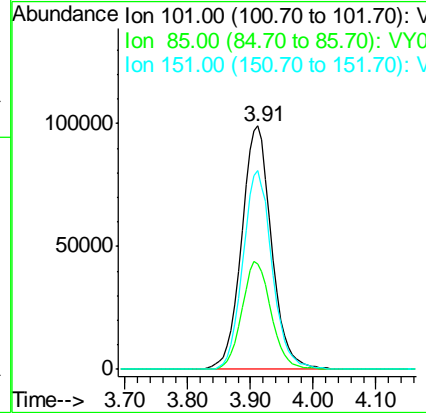
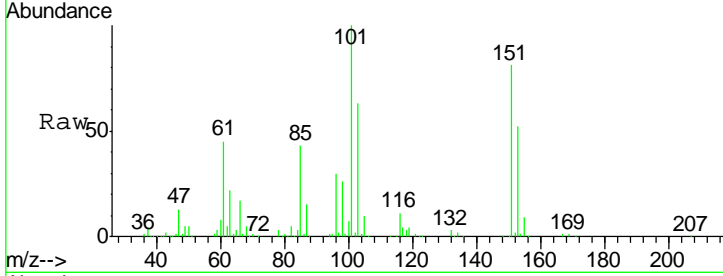




#11  
 1,1,2-Trichloro-1,2,2-trifluoroethane  
 Concen: 97.562 ug/L  
 RT: 3.91 min Scan# 343  
 Delta R.T. 0.01 min  
 Lab File: VY003661.D  
 Acq: 04 Dec 2020 12:48

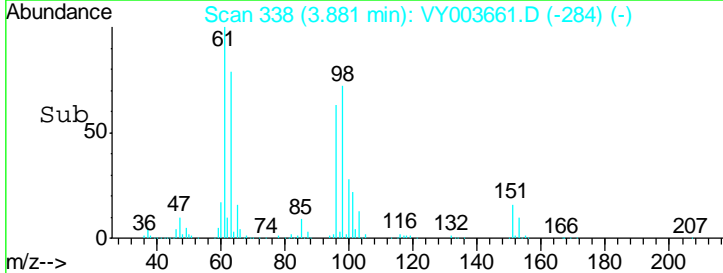
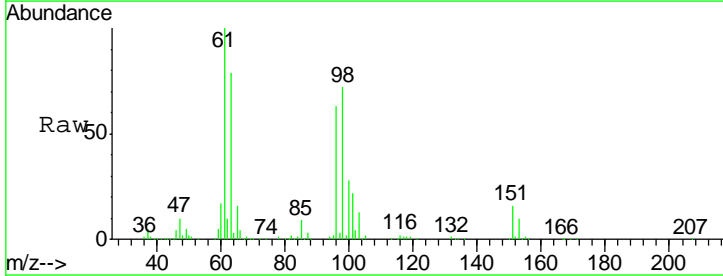
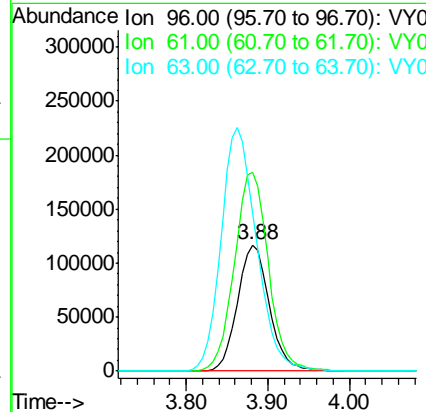
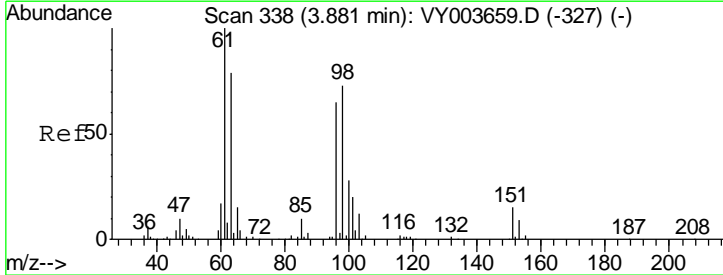
**Instrument :**  
 MSVOA\_Y  
**ClientSampled :**  
 VSTD10081

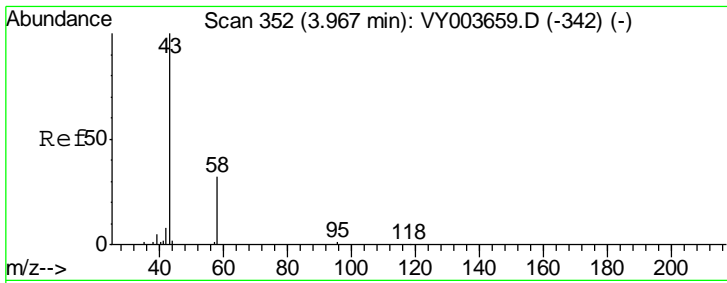
| Tgt Ion | Resp   | Lower | Upper |
|---------|--------|-------|-------|
| 101     | 327577 |       |       |
| 85      | 43.3   | 33.9  | 50.9  |
| 151     | 79.5   | 65.0  | 97.4  |



#12  
 1,1-Dichloroethene  
 Concen: 91.488 ug/L  
 RT: 3.88 min Scan# 338  
 Delta R.T. -0.00 min  
 Lab File: VY003661.D  
 Acq: 04 Dec 2020 12:48

| Tgt Ion | Resp   | Lower | Upper |
|---------|--------|-------|-------|
| 96      | 315166 |       |       |
| 61      | 157.7  | 108.5 | 201.5 |
| 63      | 124.9  | 87.8  | 163.0 |

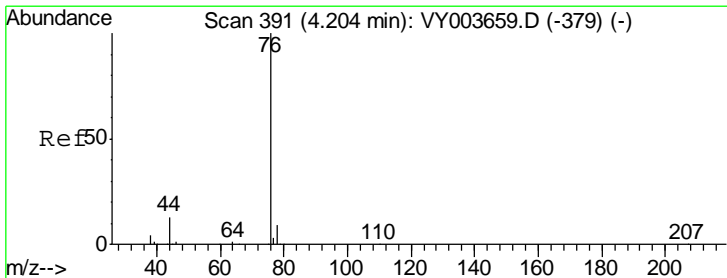
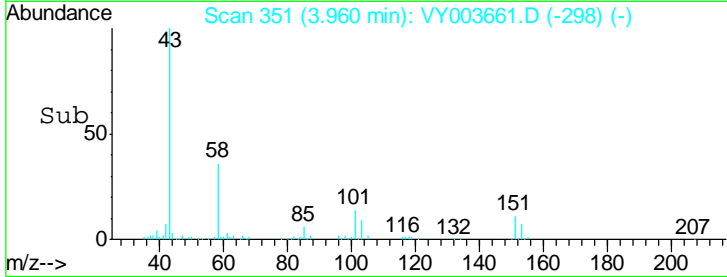
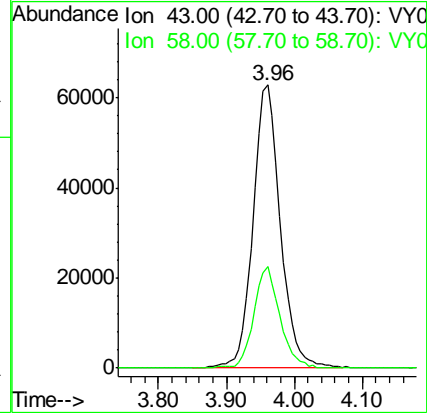
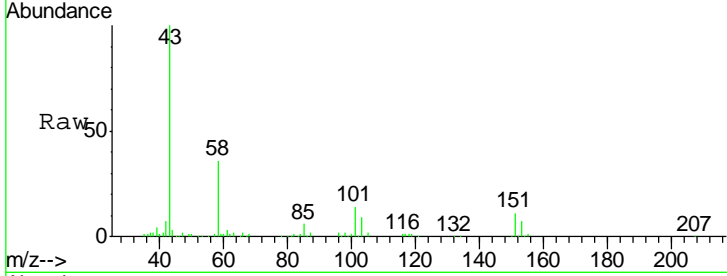




#13  
 Acetone  
 Concen: 174.788 ug/L  
 RT: 3.96 min Scan# 351  
 Delta R.T. -0.01 min  
 Lab File: VY003661.D  
 Acq: 04 Dec 2020 12:48

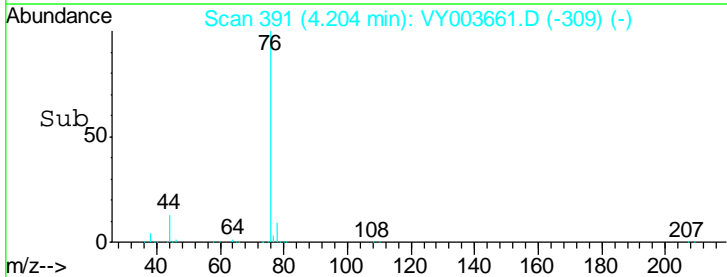
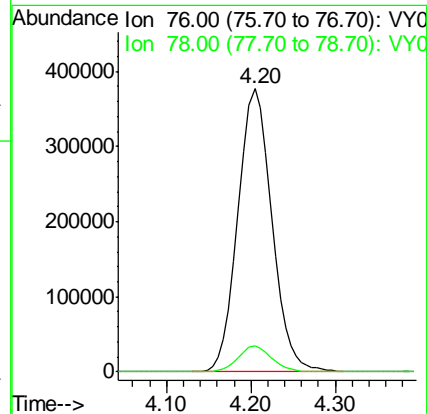
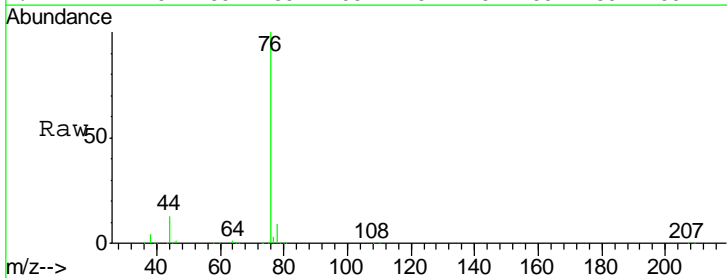
Instrument :  
 MSVOA\_Y  
 ClientSampled :  
 VSTD10081

Tgt Ion: 43 Resp: 175656  
 Ion Ratio Lower Upper  
 43 100  
 58 33.5 0.0 68.8

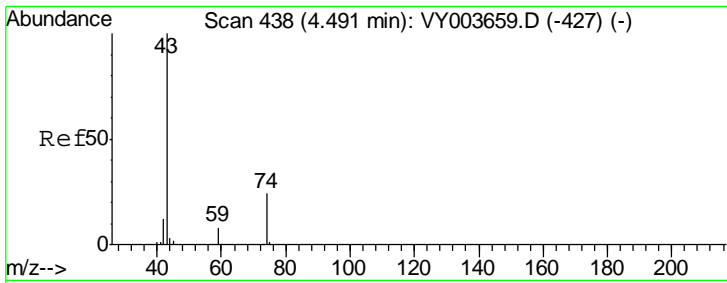


#14  
 Carbon disulfide  
 Concen: 90.735 ug/L  
 RT: 4.20 min Scan# 391  
 Delta R.T. -0.00 min  
 Lab File: VY003661.D  
 Acq: 04 Dec 2020 12:48

Tgt Ion: 76 Resp: 1032045  
 Ion Ratio Lower Upper  
 76 100  
 78 9.1 7.0 10.6



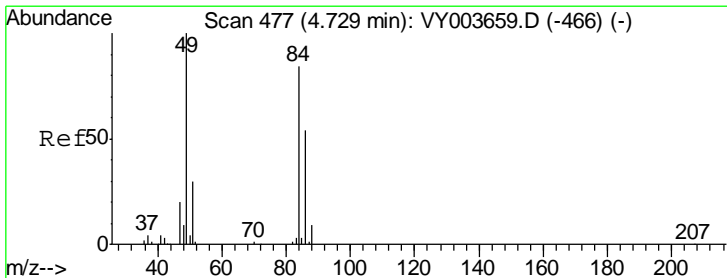
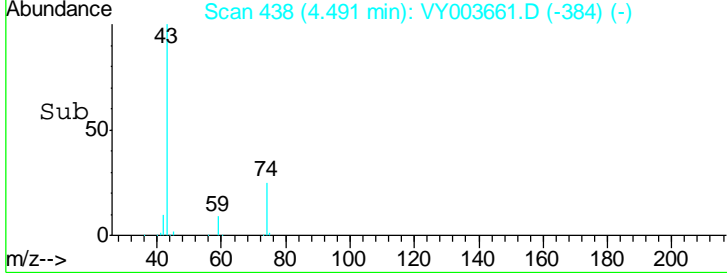
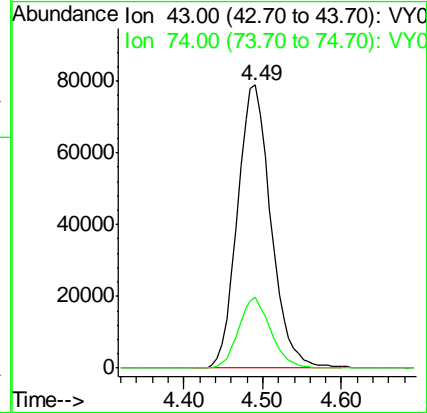
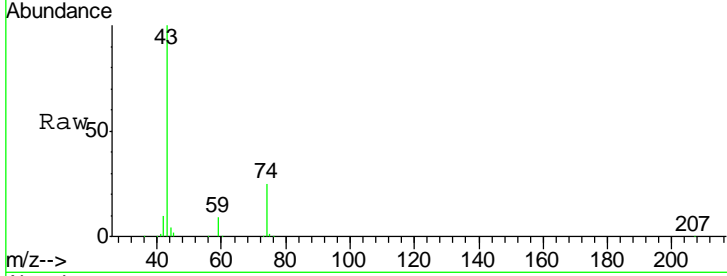




#15  
 Methyl Acetate  
 Concen: 91.922 ug/L  
 RT: 4.49 min Scan# 438  
 Delta R.T. -0.00 min  
 Lab File: VY003661.D  
 Acq: 04 Dec 2020 12:48

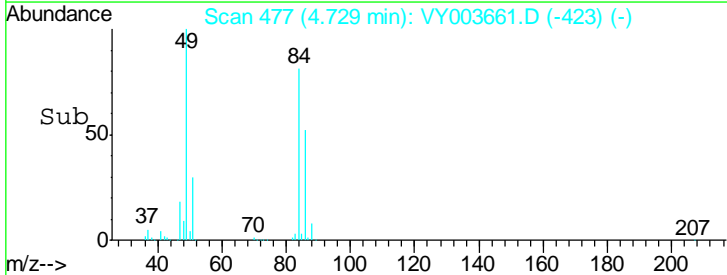
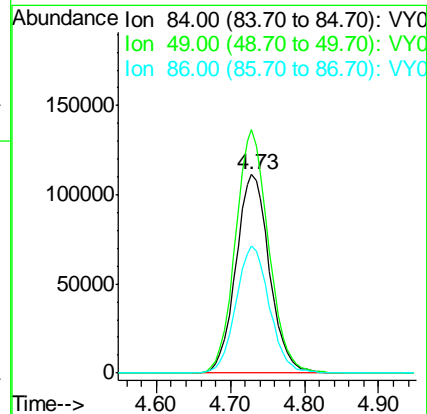
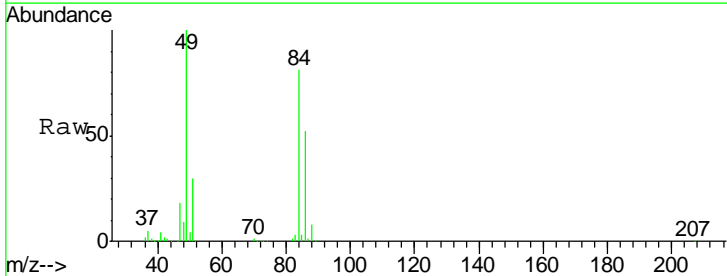
Instrument :  
 MSVOA\_Y  
 ClientSampled :  
 VSTD10081

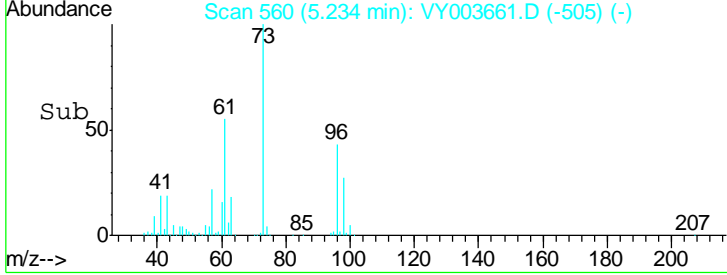
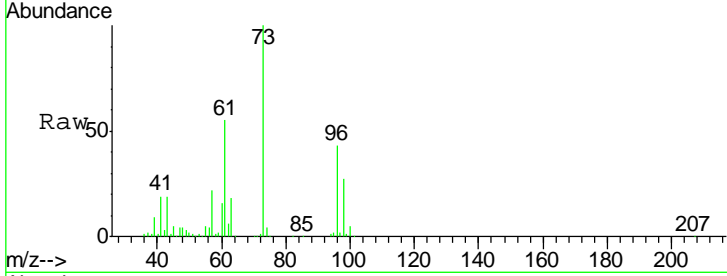
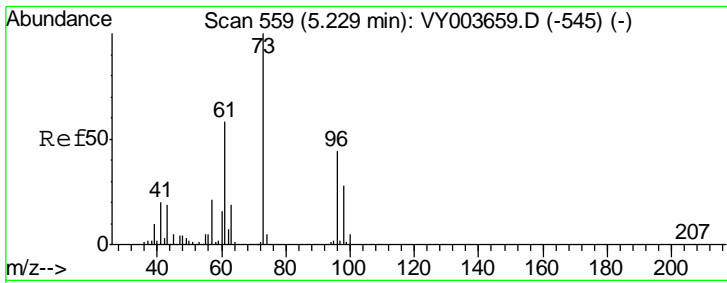
| Tgt Ion | Resp | Lower | Upper |
|---------|------|-------|-------|
| 43      | 100  |       |       |
| 74      | 24.0 | 19.2  | 28.8  |



#16  
 Methylene chloride  
 Concen: 81.109 ug/L  
 RT: 4.73 min Scan# 477  
 Delta R.T. -0.00 min  
 Lab File: VY003661.D  
 Acq: 04 Dec 2020 12:48

| Tgt Ion | Resp  | Lower | Upper |
|---------|-------|-------|-------|
| 84      | 100   |       |       |
| 49      | 122.8 | 83.7  | 155.4 |
| 86      | 63.8  | 45.0  | 83.6  |

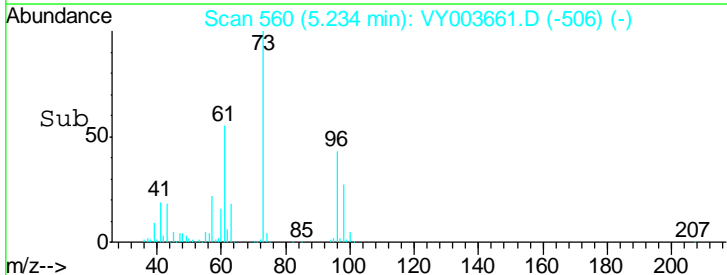
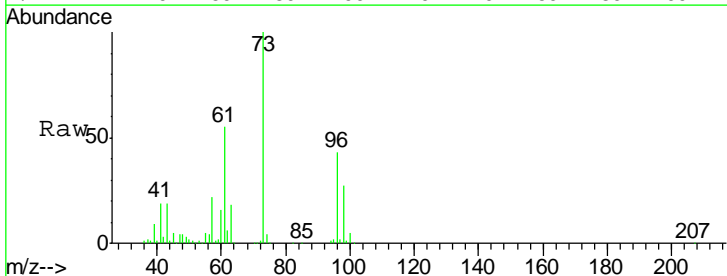
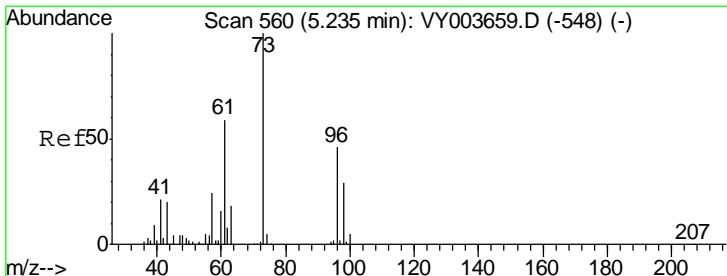
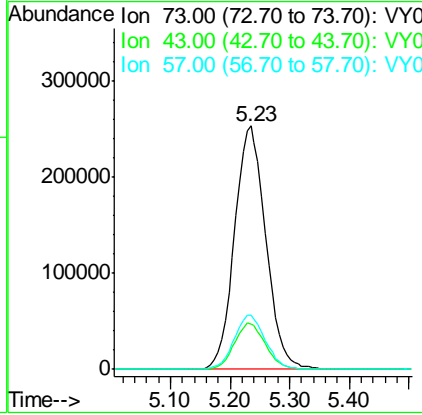




#17  
 Methyl tert-butyl Ether  
 Concen: 149.527 ug/L  
 RT: 5.23 min Scan# 560  
 Delta R.T. 0.01 min  
 Lab File: VY003661.D  
 Acq: 04 Dec 2020 12:48

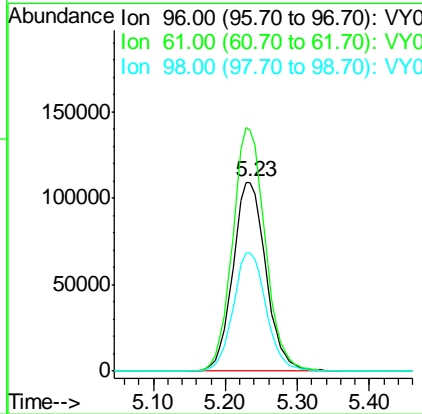
**Instrument :**  
 MSVOA\_Y  
**ClientSampled :**  
 VSTD10081

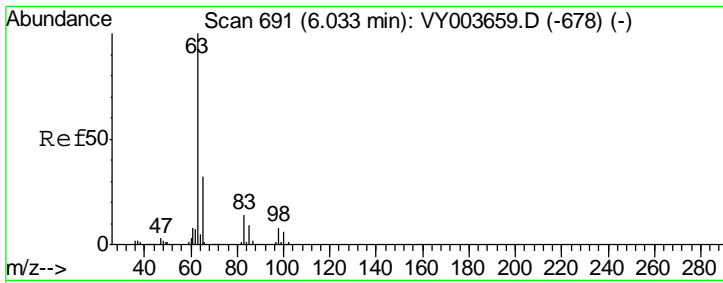
| Tgt Ion | Resp | Lower | Upper |
|---------|------|-------|-------|
| 73      | 100  |       |       |
| 43      | 19.0 | 14.9  | 22.3  |
| 57      | 22.3 | 18.1  | 27.1  |



#18  
 trans-1,2-Dichloroethene  
 Concen: 95.035 ug/L  
 RT: 5.23 min Scan# 560  
 Delta R.T. -0.00 min  
 Lab File: VY003661.D  
 Acq: 04 Dec 2020 12:48

| Tgt Ion | Resp  | Lower | Upper |
|---------|-------|-------|-------|
| 96      | 100   |       |       |
| 61      | 127.4 | 90.8  | 168.6 |
| 98      | 62.8  | 44.2  | 82.0  |

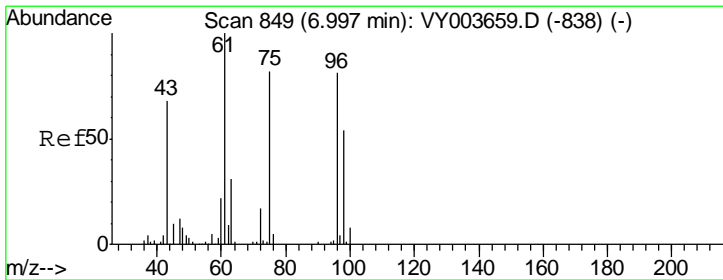
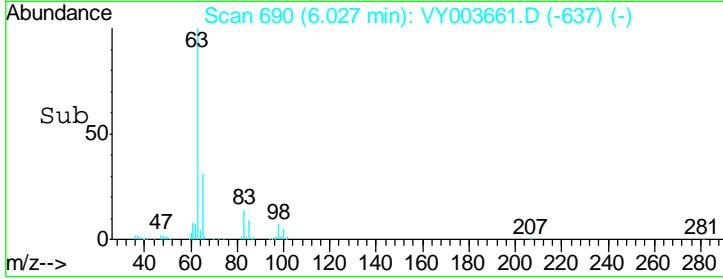
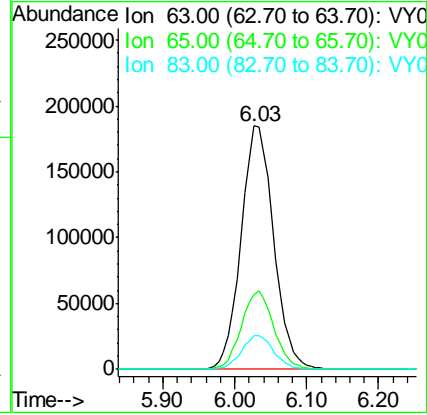
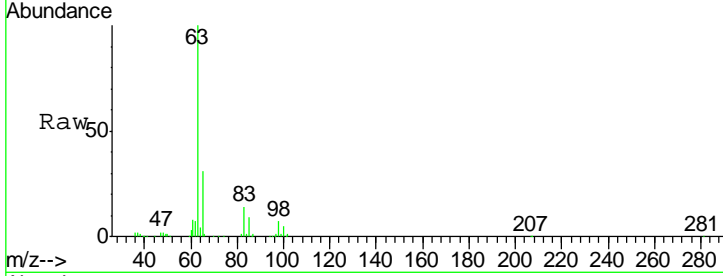




#19  
 1,1-Dichloroethane  
 Concen: 94.587 ug/L  
 RT: 6.03 min Scan# 690  
 Delta R.T. -0.01 min  
 Lab File: VY003661.D  
 Acq: 04 Dec 2020 12:48

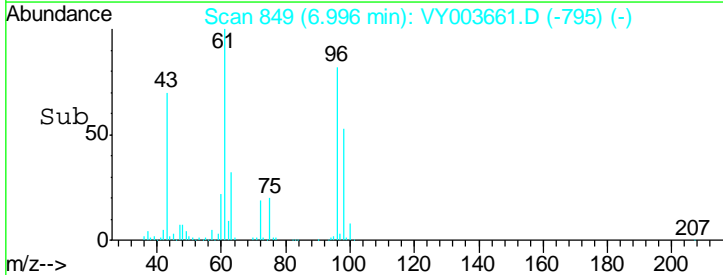
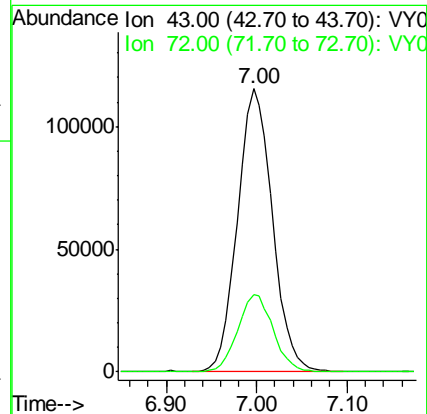
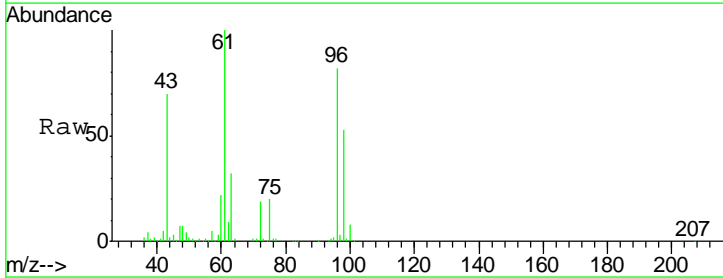
Instrument :  
 MSVOA\_Y  
 ClientSampled :  
 VSTD10081

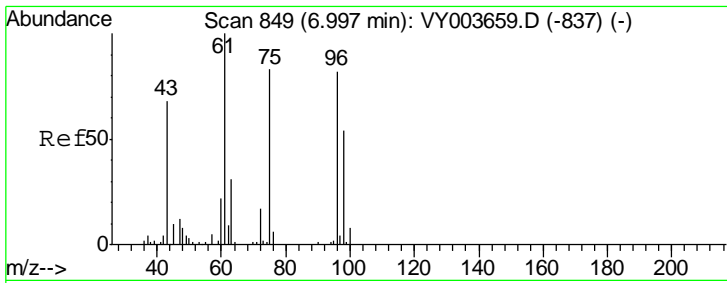
| Tgt Ion | Resp   | Lower | Upper |
|---------|--------|-------|-------|
| 63      | 581616 |       |       |
| 65      | 30.9   | 22.7  | 42.1  |
| 83      | 14.0   | 9.7   | 17.9  |



#21  
 2-Butanone  
 Concen: 182.047 ug/L  
 RT: 7.00 min Scan# 849  
 Delta R.T. -0.00 min  
 Lab File: VY003661.D  
 Acq: 04 Dec 2020 12:48

| Tgt Ion | Resp   | Lower | Upper |
|---------|--------|-------|-------|
| 43      | 307492 |       |       |
| 72      | 27.9   | 13.3  | 39.9  |

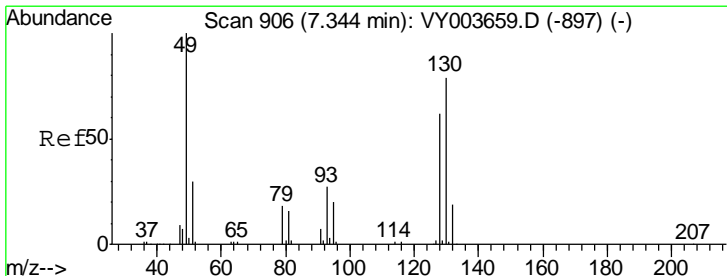
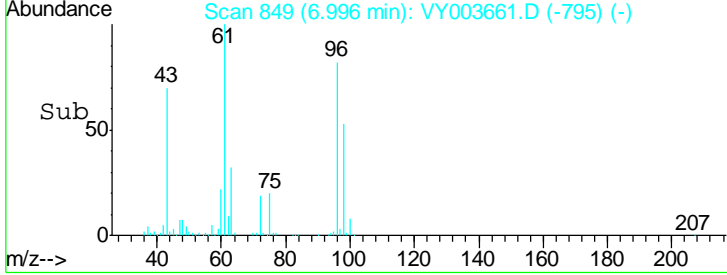
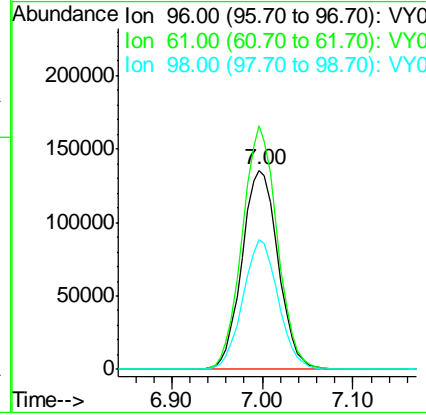
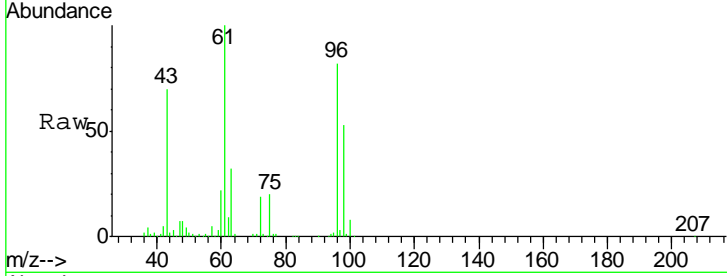




#22  
 cis-1,2-Dichloroethene  
 Concen: 99.397 ug/L  
 RT: 7.00 min Scan# 849  
 Delta R.T. -0.00 min  
 Lab File: VY003661.D  
 Acq: 04 Dec 2020 12:48

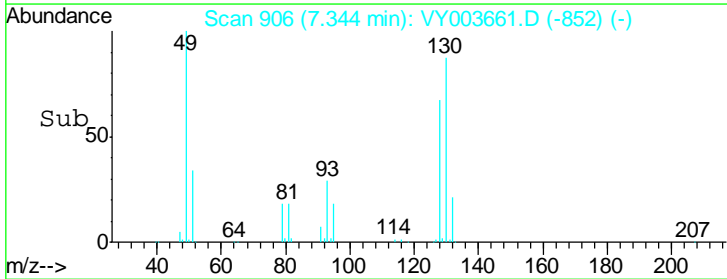
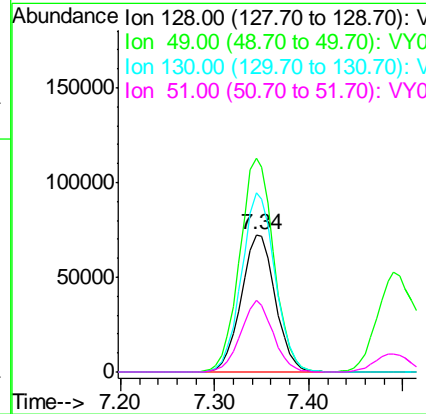
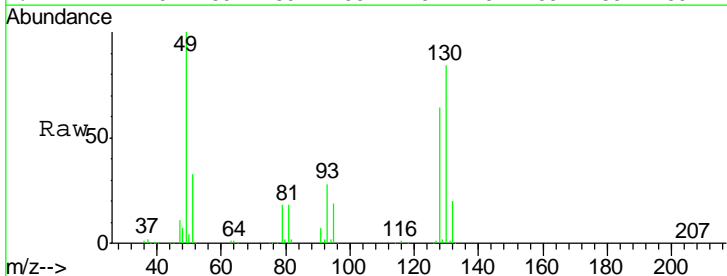
Instrument :  
 MSVOA\_Y  
 ClientSampled :  
 VSTD10081

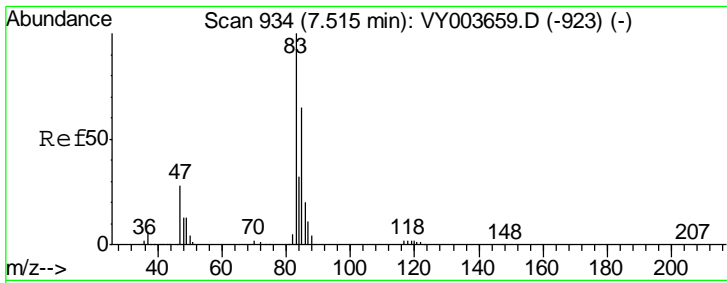
| Tgt Ion | Resp   | Lower | Upper |
|---------|--------|-------|-------|
| 96      | 375341 |       |       |
| 61      | 122.1  | 85.8  | 159.4 |
| 98      | 65.1   | 46.5  | 86.3  |



#23  
 Bromochloromethane  
 Concen: 99.373 ug/L  
 RT: 7.34 min Scan# 906  
 Delta R.T. -0.00 min  
 Lab File: VY003661.D  
 Acq: 04 Dec 2020 12:48

| Tgt Ion | Resp   | Lower | Upper |
|---------|--------|-------|-------|
| 128     | 182577 |       |       |
| 49      | 155.9  | 113.8 | 211.3 |
| 130     | 131.1  | 89.7  | 166.5 |
| 51      | 51.9   | 38.5  | 57.7  |

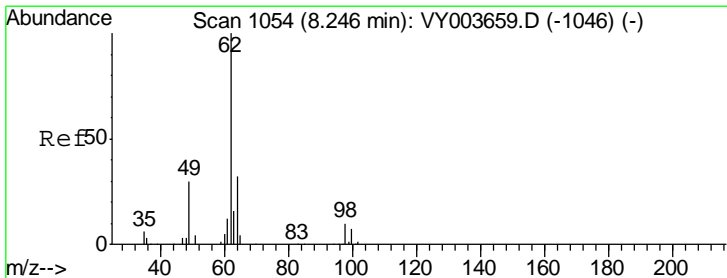
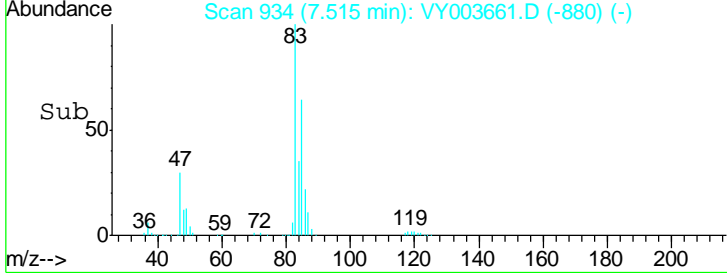
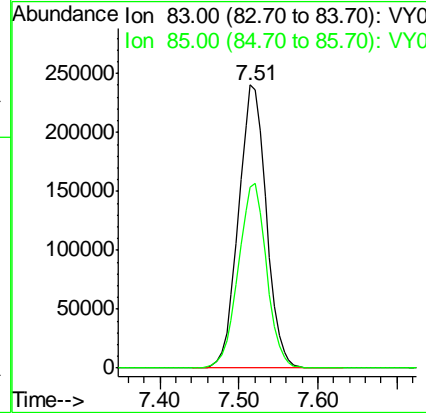
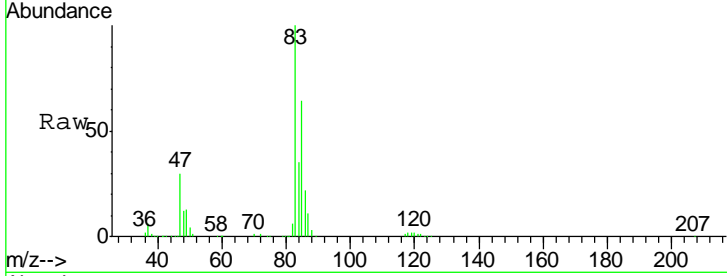




#25  
 Chloroform  
 Concen: 95.945 ug/L  
 RT: 7.51 min Scan# 934  
 Delta R.T. -0.00 min  
 Lab File: VY003661.D  
 Acq: 04 Dec 2020 12:48

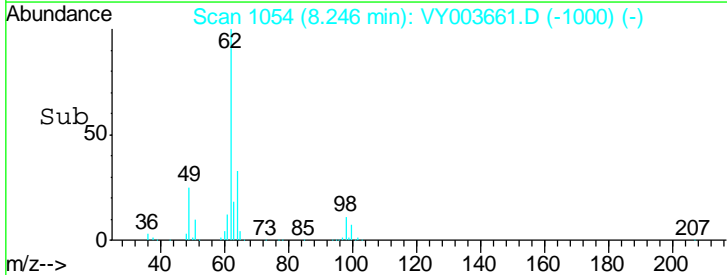
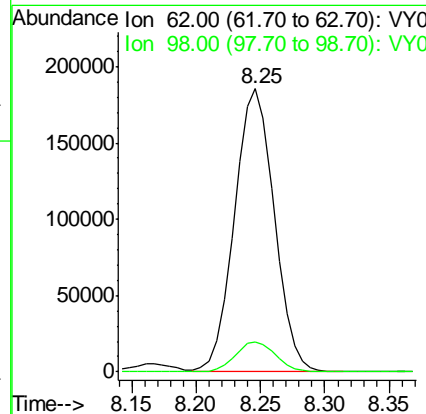
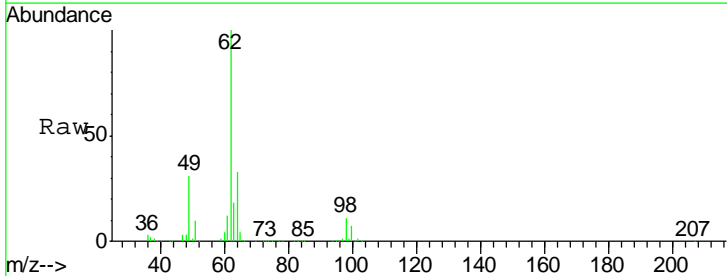
Instrument :  
 MSVOA\_Y  
 ClientSampled :  
 VSTD10081

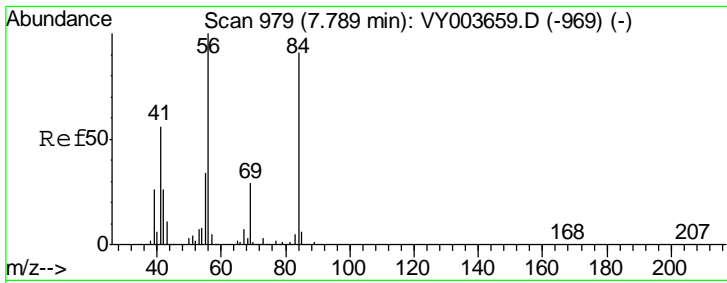
Tgt Ion: 83 Resp: 590119  
 Ion Ratio Lower Upper  
 83 100  
 85 66.1 46.5 86.5



#27  
 1,2-Dichloroethane  
 Concen: 95.651 ug/L  
 RT: 8.25 min Scan# 1054  
 Delta R.T. -0.00 min  
 Lab File: VY003661.D  
 Acq: 04 Dec 2020 12:48

Tgt Ion: 62 Resp: 398225  
 Ion Ratio Lower Upper  
 62 100  
 98 10.6 8.0 12.0

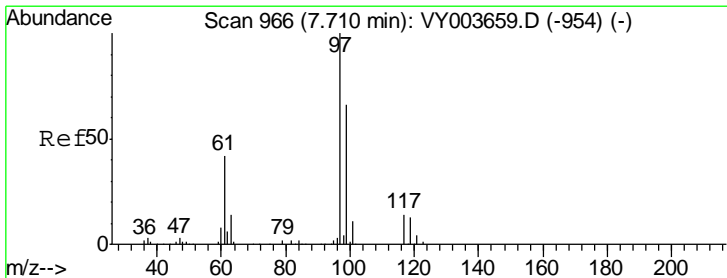
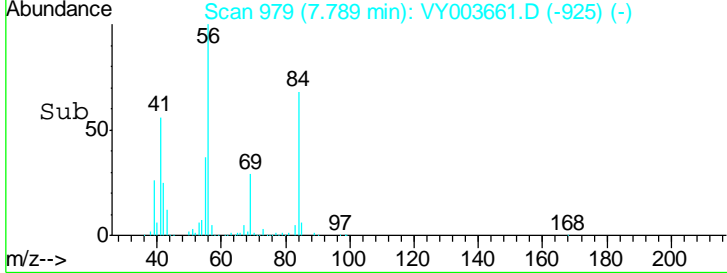
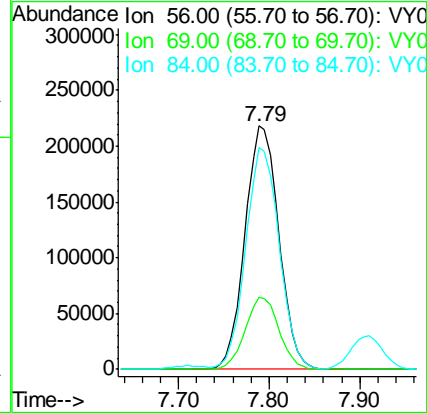
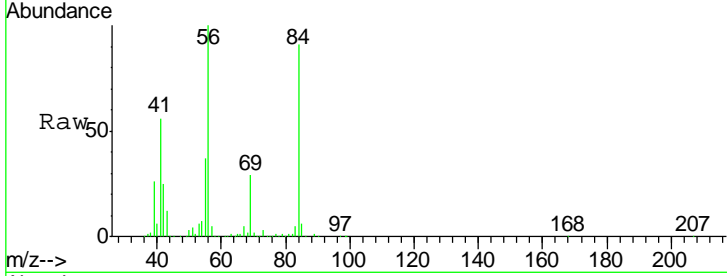




#30  
 Cyclohexane  
 Concen: 97.284 ug/L  
 RT: 7.79 min Scan# 979  
 Delta R.T. -0.00 min  
 Lab File: VY003661.D  
 Acq: 04 Dec 2020 12:48

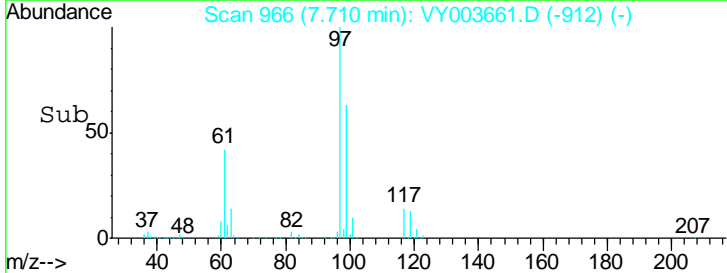
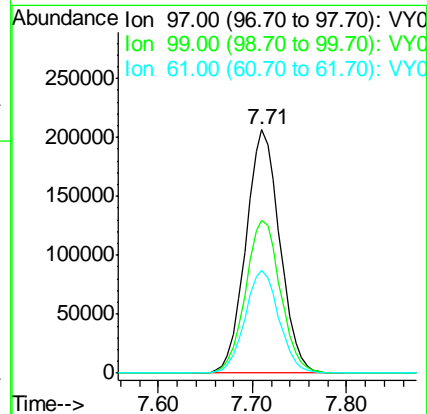
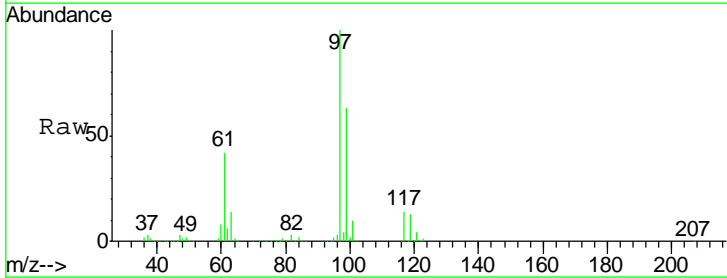
Instrument :  
 MSVOA\_Y  
 ClientSampled :  
 VSTD10081

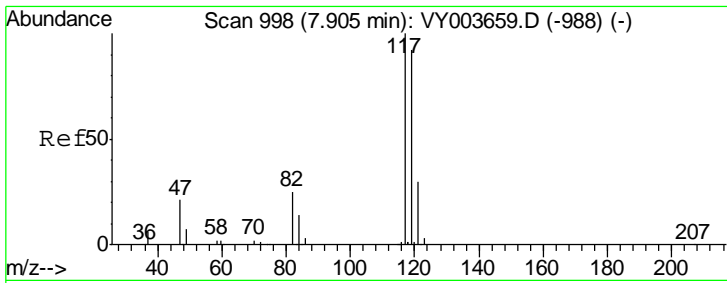
| Tgt Ion | Resp | Lower | Upper |
|---------|------|-------|-------|
| 56      | 100  |       |       |
| 69      | 29.5 | 23.8  | 35.8  |
| 84      | 90.6 | 73.2  | 109.8 |



#31  
 1,1,1-Trichloroethane  
 Concen: 98.761 ug/L  
 RT: 7.71 min Scan# 966  
 Delta R.T. -0.00 min  
 Lab File: VY003661.D  
 Acq: 04 Dec 2020 12:48

| Tgt Ion | Resp | Lower | Upper |
|---------|------|-------|-------|
| 97      | 100  |       |       |
| 99      | 64.5 | 51.4  | 77.0  |
| 61      | 42.0 | 34.0  | 51.0  |

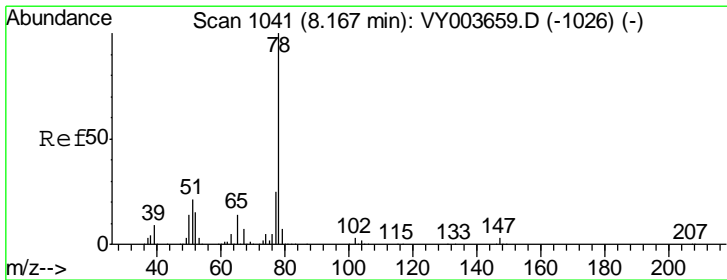
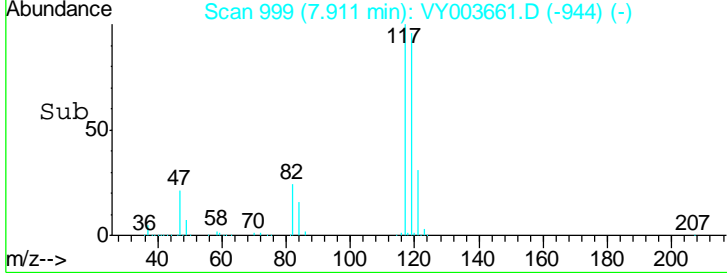
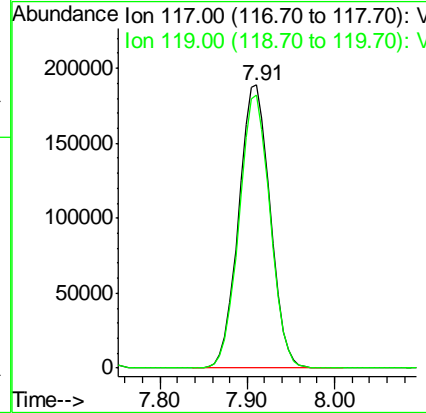
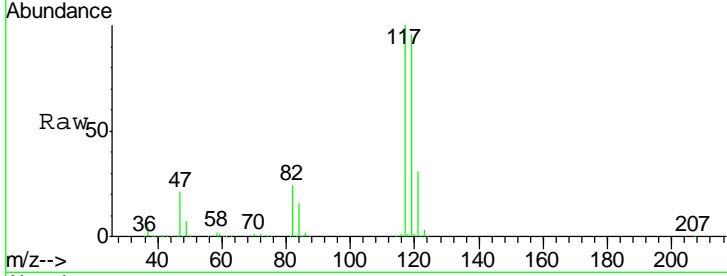




#32  
 Carbon tetrachloride  
 Concen: 94.698 ug/L  
 RT: 7.91 min Scan# 999  
 Delta R.T. 0.01 min  
 Lab File: VY003661.D  
 Acq: 04 Dec 2020 12:48

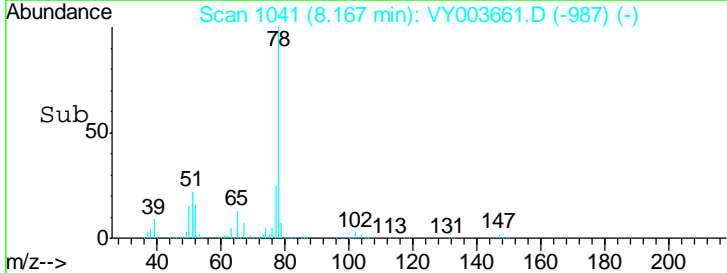
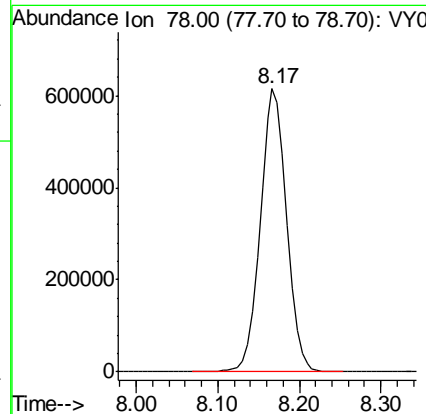
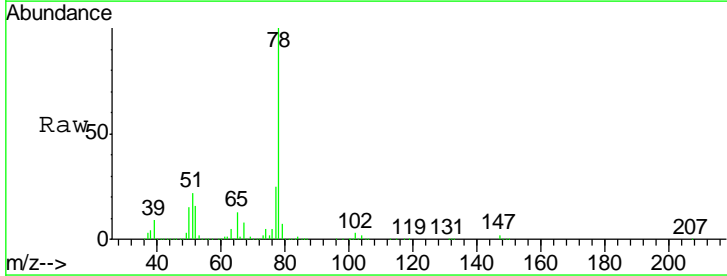
Instrument :  
 MSVOA\_Y  
 ClientSampled :  
 VSTD10081

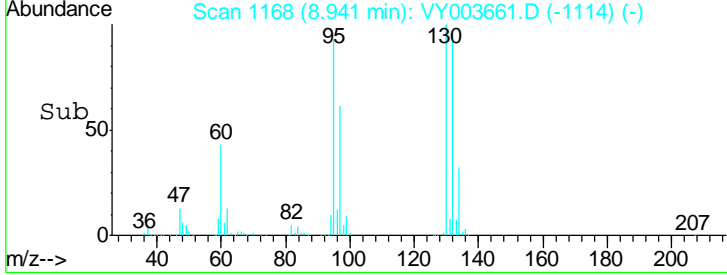
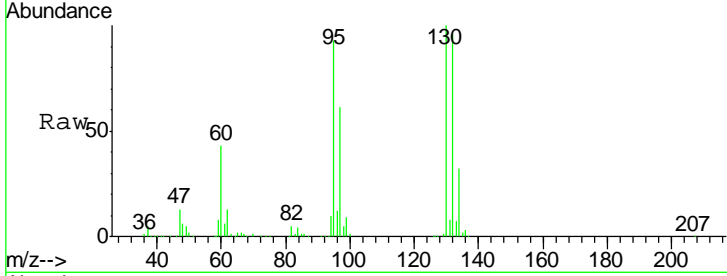
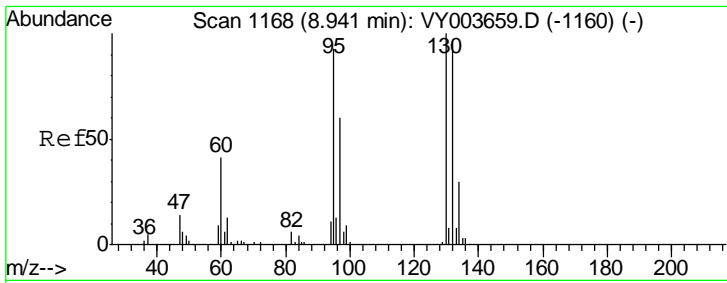
Tgt Ion:117 Resp: 471789  
 Ion Ratio Lower Upper  
 117 100  
 119 95.4 75.4 113.0



#34  
 Benzene  
 Concen: 91.383 ug/L  
 RT: 8.17 min Scan# 1041  
 Delta R.T. -0.00 min  
 Lab File: VY003661.D  
 Acq: 04 Dec 2020 12:48

Tgt Ion: 78 Resp: 1382674

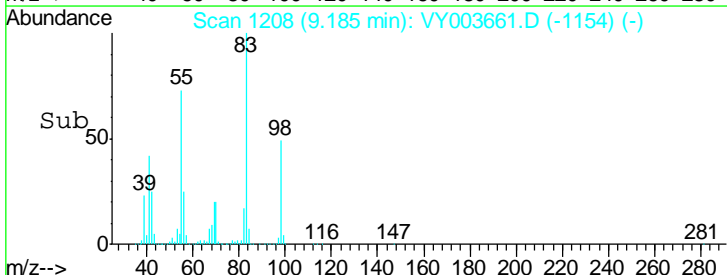
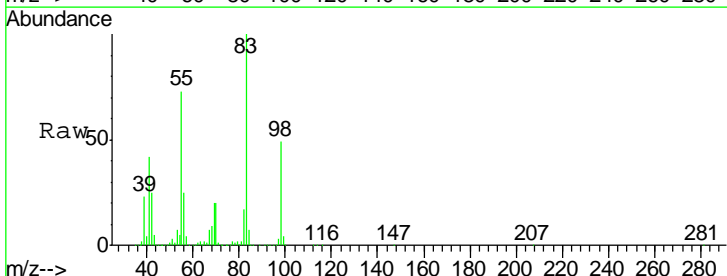
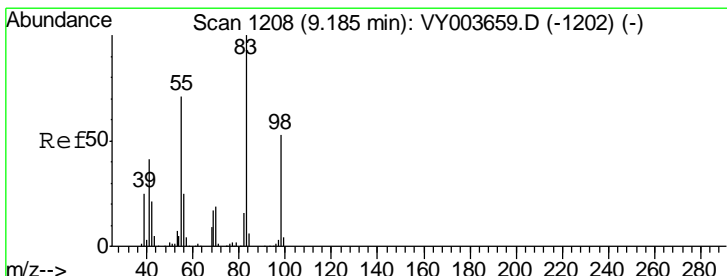
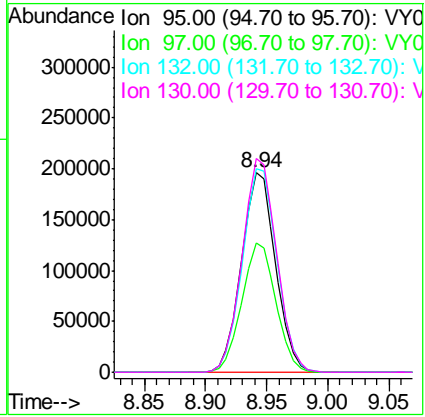




#35  
 Trichloroethene  
 Concen: 97.783 ug/L  
 RT: 8.94 min Scan# 1168  
 Delta R.T. -0.00 min  
 Lab File: VY003661.D  
 Acq: 04 Dec 2020 12:48

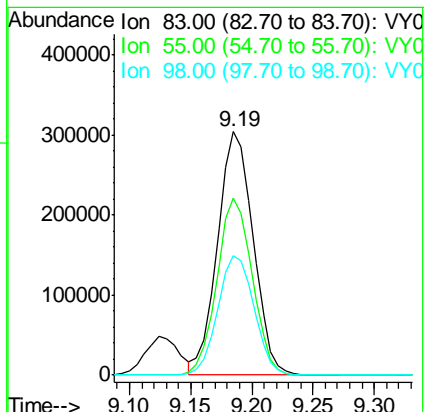
Instrument :  
 MSVOA\_Y  
 ClientSampled :  
 VSTD10081

| Tgt Ion | Resp   | Lower | Upper |
|---------|--------|-------|-------|
| 95      | 380350 |       |       |
| 97      | 64.8   | 45.8  | 85.0  |
| 132     | 103.8  | 74.2  | 137.8 |
| 130     | 108.1  | 76.2  | 141.6 |

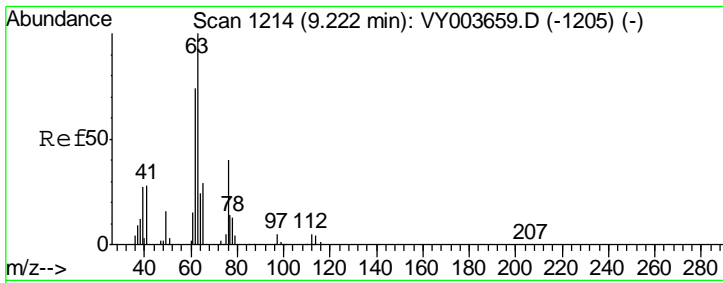


#36  
 Methylcyclohexane  
 Concen: 100.836 ug/L  
 RT: 9.19 min Scan# 1208  
 Delta R.T. -0.00 min  
 Lab File: VY003661.D  
 Acq: 04 Dec 2020 12:48

| Tgt Ion | Resp   | Lower | Upper |
|---------|--------|-------|-------|
| 83      | 614470 |       |       |
| 55      | 72.0   | 56.4  | 84.6  |
| 98      | 50.0   | 40.3  | 60.5  |



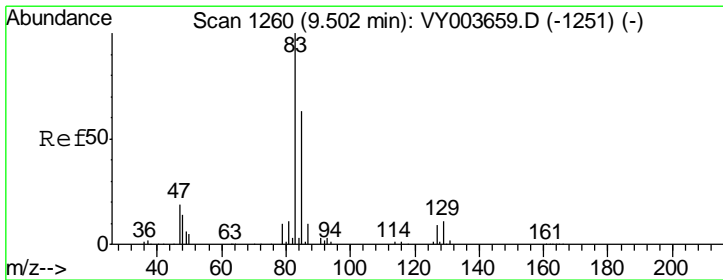
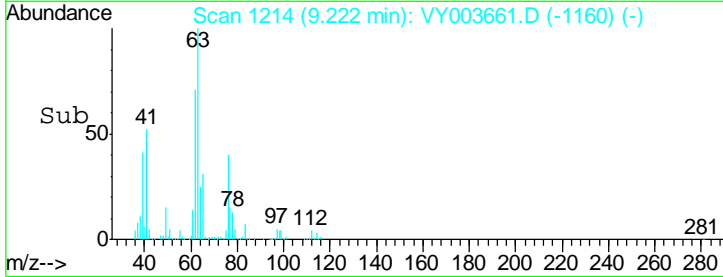
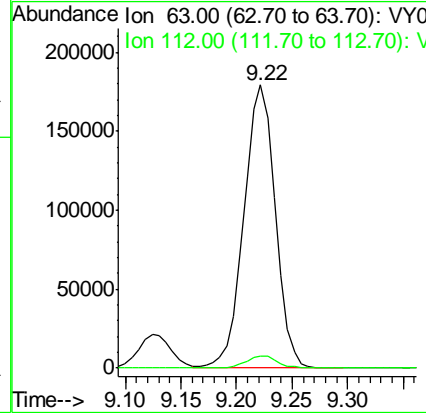
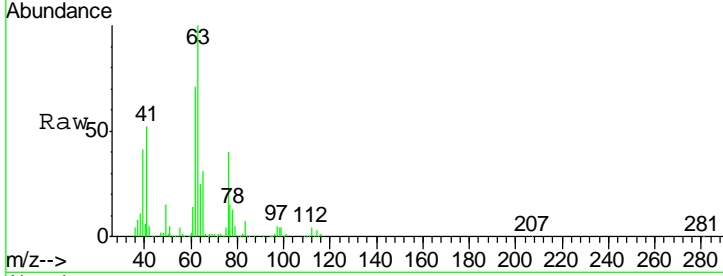




#40  
 1,2-Dichloropropane  
 Concen: 93.794 ug/L  
 RT: 9.22 min Scan# 1214  
 Delta R.T. -0.00 min  
 Lab File: VY003661.D  
 Acq: 04 Dec 2020 12:48

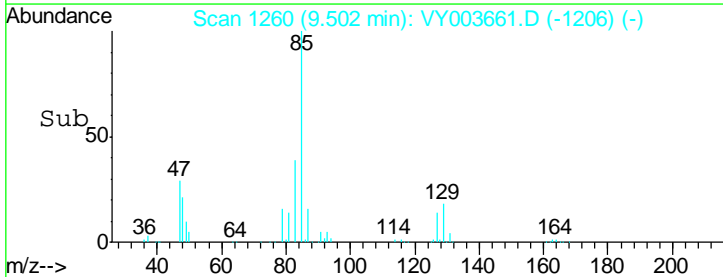
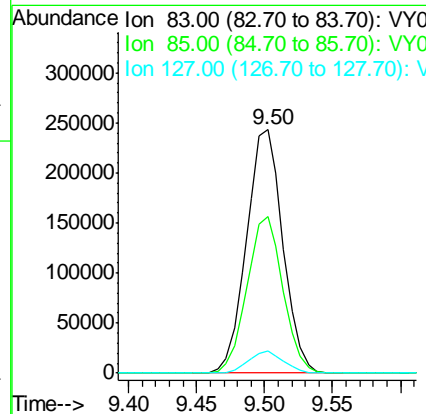
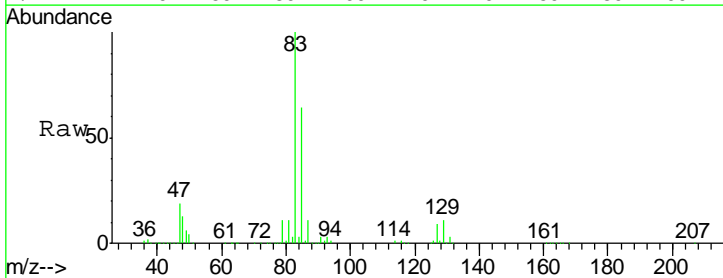
Instrument :  
 MSVOA\_Y  
 ClientSampled :  
 VSTD10081

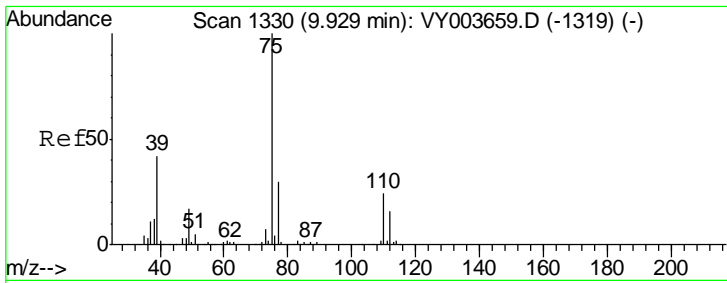
Tgt Ion: 63 Resp: 351287  
 Ion Ratio Lower Upper  
 63 100  
 112 4.3 3.7 5.5



#41  
 Bromodichloromethane  
 Concen: 95.266 ug/L  
 RT: 9.50 min Scan# 1260  
 Delta R.T. -0.00 min  
 Lab File: VY003661.D  
 Acq: 04 Dec 2020 12:48

Tgt Ion: 83 Resp: 454097  
 Ion Ratio Lower Upper  
 83 100  
 85 64.4 44.0 81.6  
 127 9.1 7.2 10.8

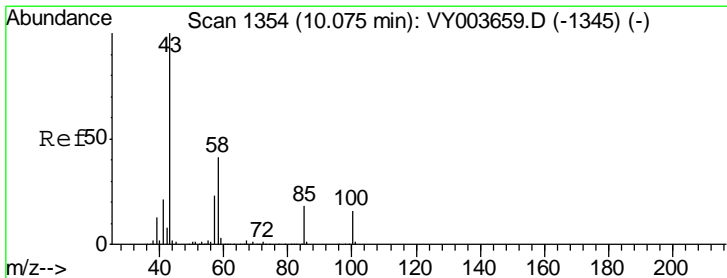
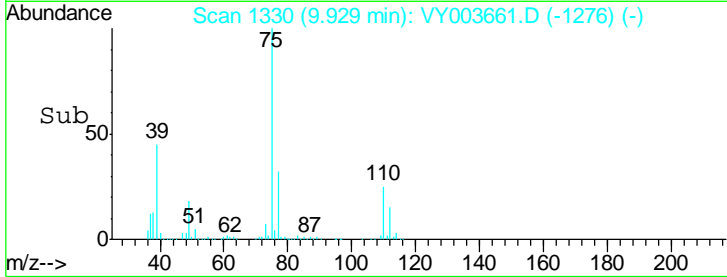
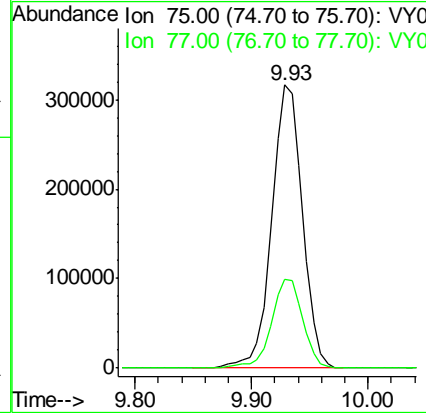
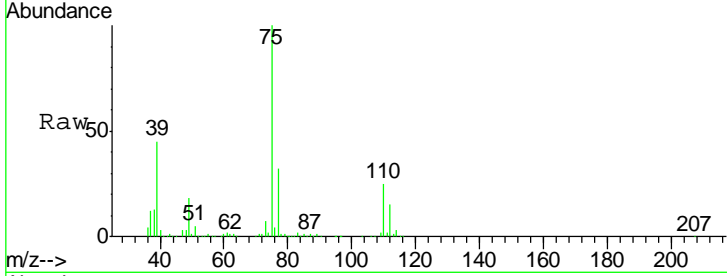




#42  
 cis-1,3-Dichloropropene  
 Concen: 98.070 ug/L  
 RT: 9.93 min Scan# 1330  
 Delta R.T. -0.00 min  
 Lab File: VY003661.D  
 Acq: 04 Dec 2020 12:48

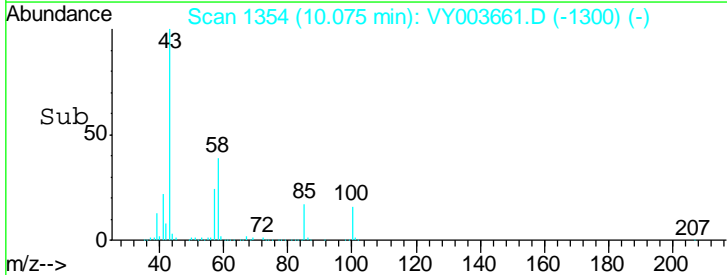
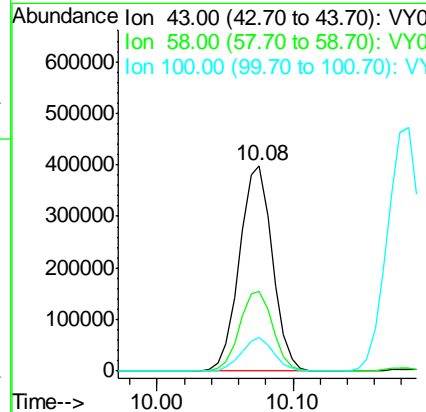
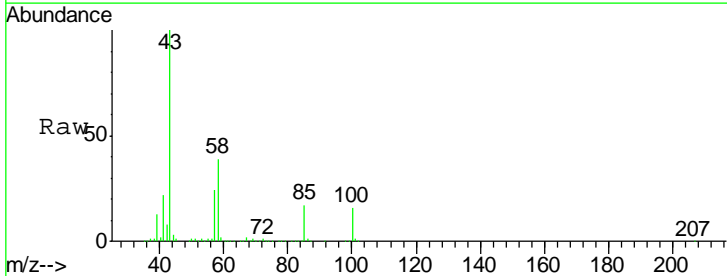
Instrument : MSVOA\_Y  
 ClientSampled : VSTD10081

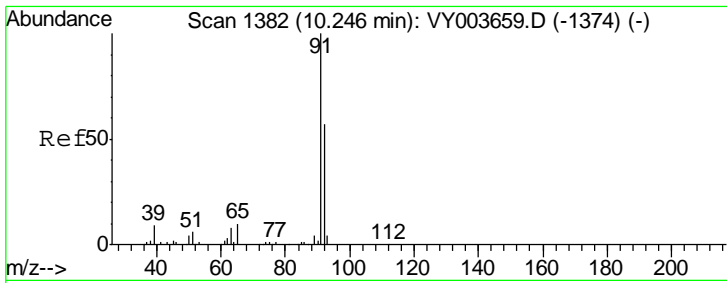
Tgt Ion: 75 Resp: 577910  
 Ion Ratio Lower Upper  
 75 100  
 77 31.5 21.3 39.6



#43  
 4-Methyl-2-pentanone  
 Concen: 209.666 ug/L  
 RT: 10.08 min Scan# 1354  
 Delta R.T. -0.00 min  
 Lab File: VY003661.D  
 Acq: 04 Dec 2020 12:48

Tgt Ion: 43 Resp: 670906  
 Ion Ratio Lower Upper  
 43 100  
 58 39.4 31.5 47.3  
 100 16.0 12.7 19.1

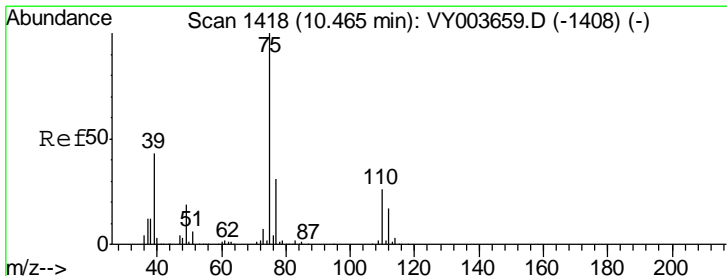
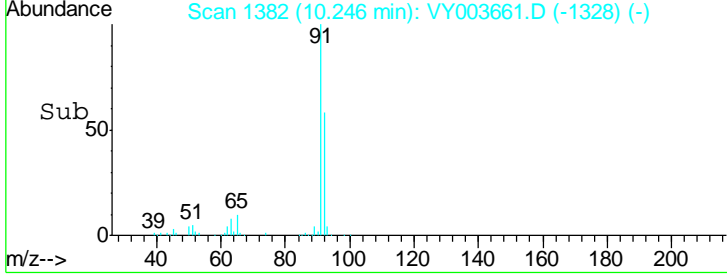
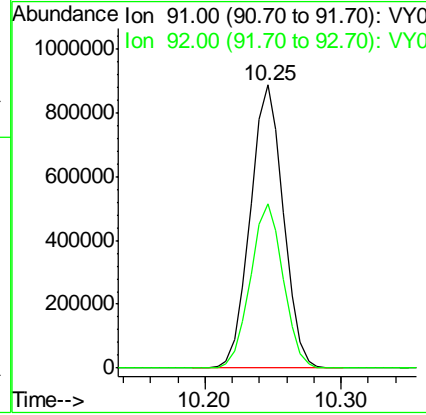
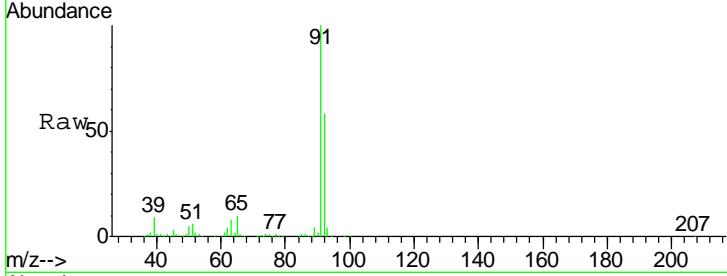




#44  
 Toluene  
 Concen: 94.208 ug/L  
 RT: 10.25 min Scan# 1382  
 Delta R.T. -0.00 min  
 Lab File: VY003661.D  
 Acq: 04 Dec 2020 12:48

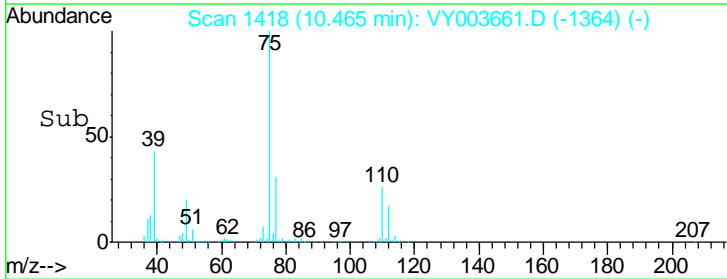
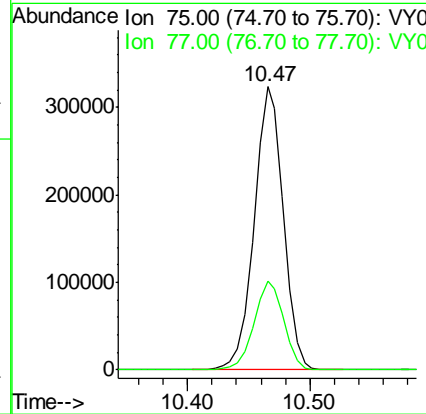
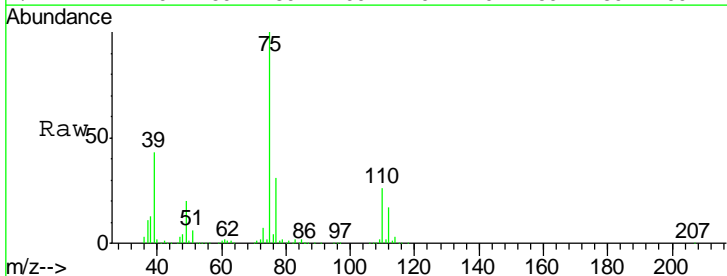
Instrument : MSVOA\_Y  
 ClientSampled : VSTD10081

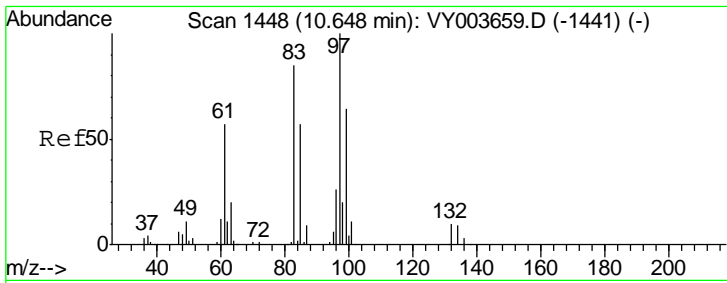
Tgt Ion: 91 Resp: 1504853  
 Ion Ratio Lower Upper  
 91 100  
 92 58.0 39.8 73.8



#45  
 trans-1,3-Dichloropropene  
 Concen: 98.133 ug/L  
 RT: 10.47 min Scan# 1418  
 Delta R.T. -0.00 min  
 Lab File: VY003661.D  
 Acq: 04 Dec 2020 12:48

Tgt Ion: 75 Resp: 535251  
 Ion Ratio Lower Upper  
 75 100  
 77 31.2 22.0 40.8

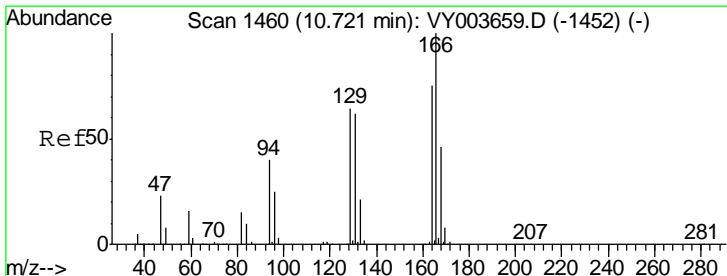
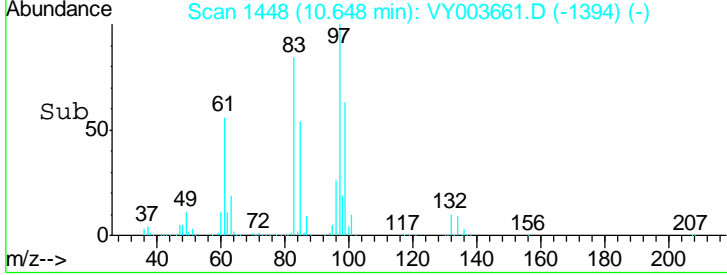
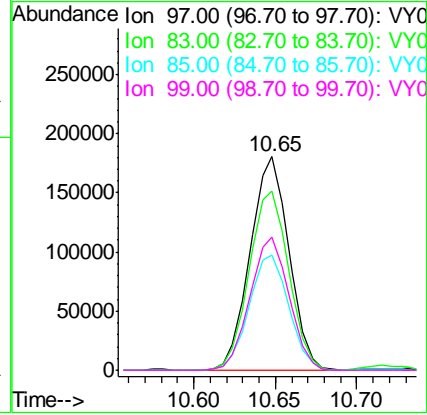
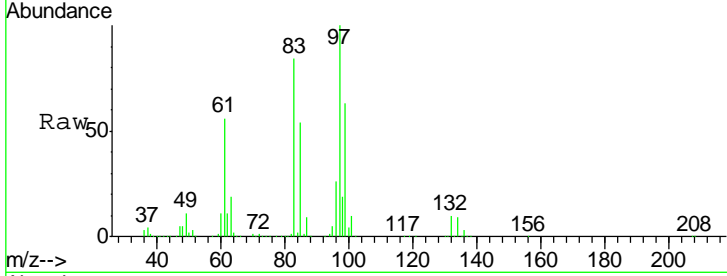




#46  
 1,1,2-Trichloroethane  
 Concen: 98.591 ug/L  
 RT: 10.65 min Scan# 1448  
 Delta R.T. -0.00 min  
 Lab File: VY003661.D  
 Acq: 04 Dec 2020 12:48

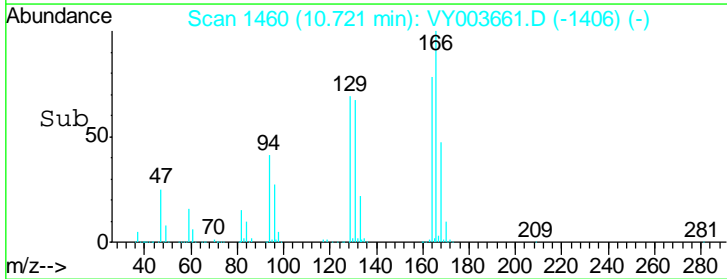
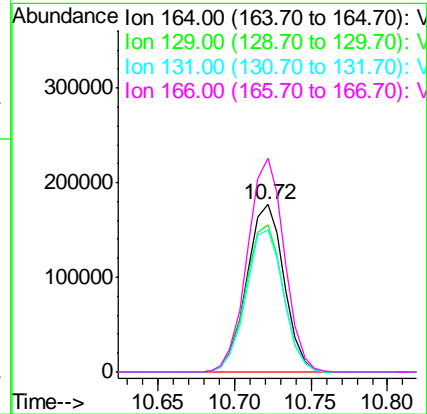
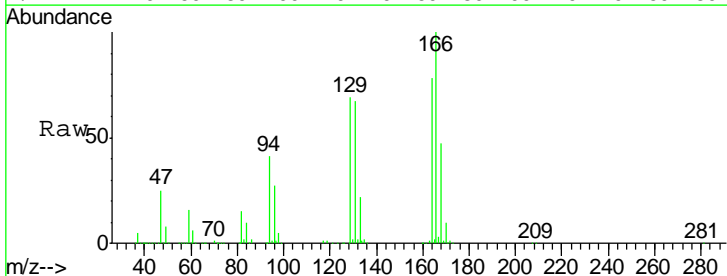
Instrument : MSVOA\_Y  
 ClientSampled : VSTD10081

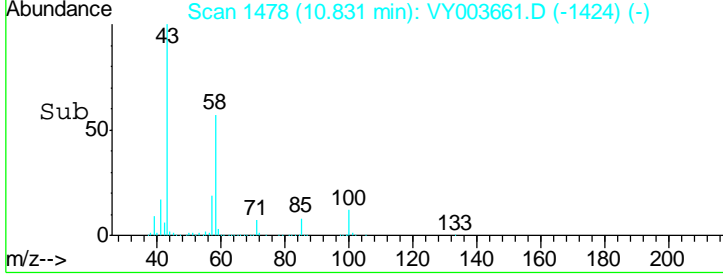
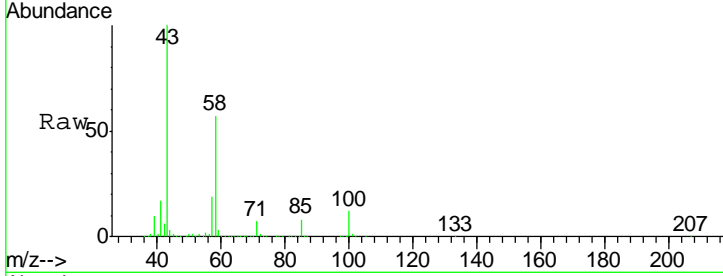
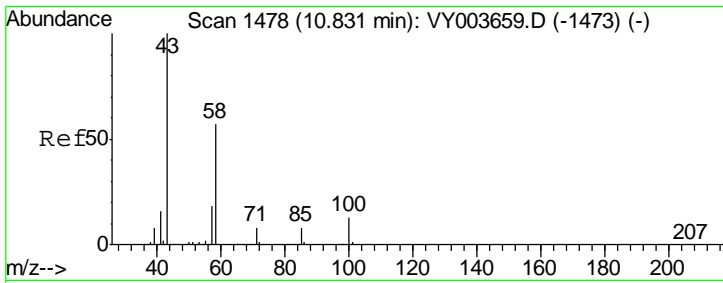
| Tgt Ion | Resp | Lower | Upper |
|---------|------|-------|-------|
| 97      | 100  |       |       |
| 83      | 84.1 | 59.6  | 110.8 |
| 85      | 53.8 | 40.2  | 74.6  |
| 99      | 62.5 | 44.7  | 82.9  |



#47  
 Tetrachloroethene  
 Concen: 90.578 ug/L  
 RT: 10.72 min Scan# 1460  
 Delta R.T. -0.00 min  
 Lab File: VY003661.D  
 Acq: 04 Dec 2020 12:48

| Tgt Ion | Resp  | Lower | Upper |
|---------|-------|-------|-------|
| 164     | 100   |       |       |
| 129     | 88.3  | 59.6  | 110.6 |
| 131     | 85.2  | 57.9  | 107.5 |
| 166     | 127.8 | 93.2  | 173.2 |

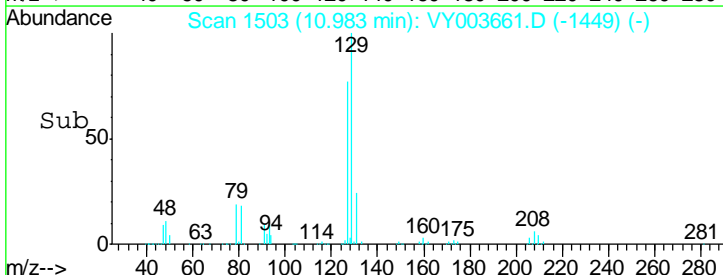
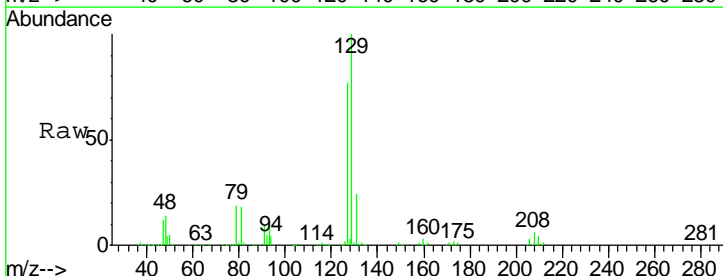
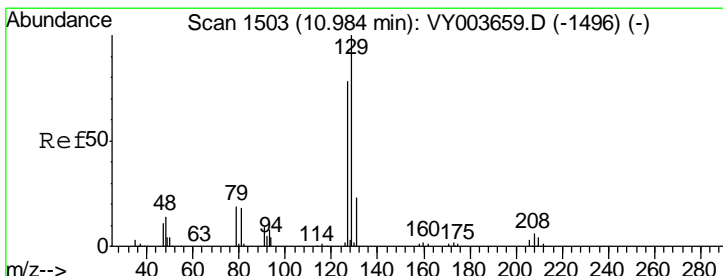
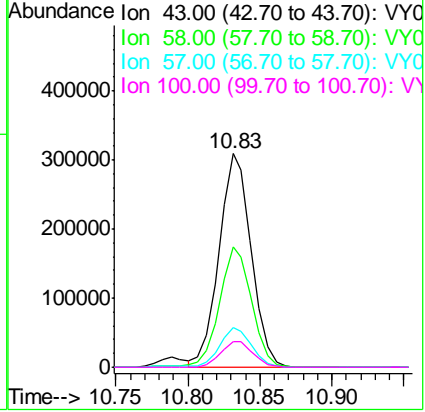




#49  
 2-Hexanone  
 Concen: 195.158 ug/L  
 RT: 10.83 min Scan# 1478  
 Delta R.T. -0.00 min  
 Lab File: VY003661.D  
 Acq: 04 Dec 2020 12:48

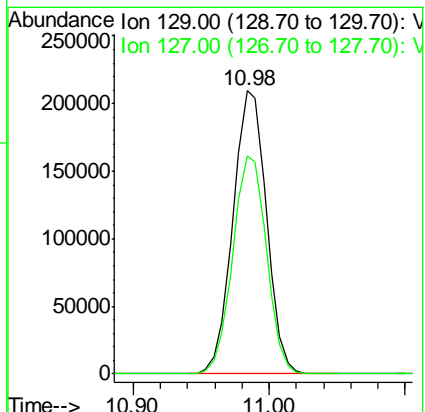
Instrument : MSVOA\_Y  
 ClientSampled : VSTD10081

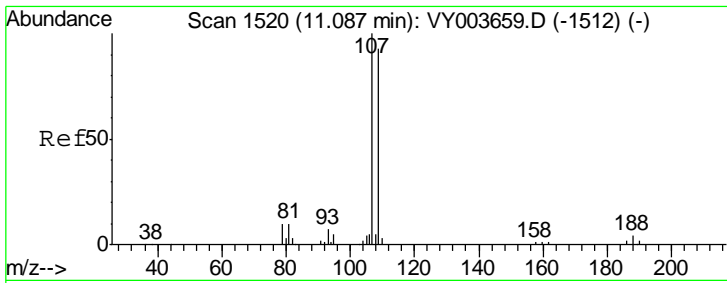
| Tgt Ion | Resp | Lower | Upper |
|---------|------|-------|-------|
| 43      | 100  |       |       |
| 58      | 56.9 | 44.8  | 67.2  |
| 57      | 18.2 | 14.8  | 22.2  |
| 100     | 12.3 | 9.9   | 14.9  |



#50  
 Dibromochloromethane  
 Concen: 98.735 ug/L  
 RT: 10.98 min Scan# 1503  
 Delta R.T. -0.00 min  
 Lab File: VY003661.D  
 Acq: 04 Dec 2020 12:48

| Tgt Ion | Resp | Lower | Upper |
|---------|------|-------|-------|
| 129     | 100  |       |       |
| 127     | 77.2 | 54.8  | 101.8 |

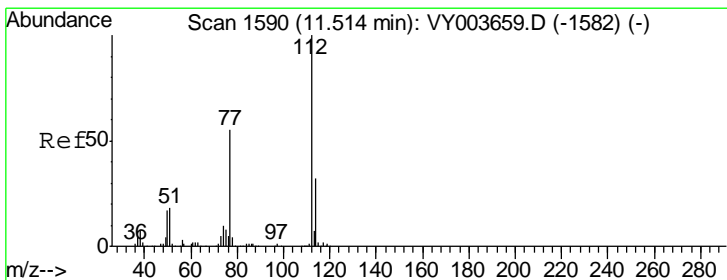
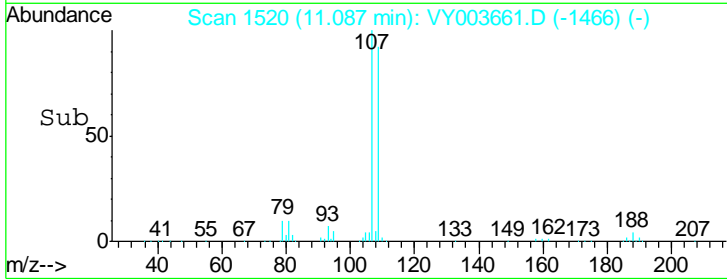
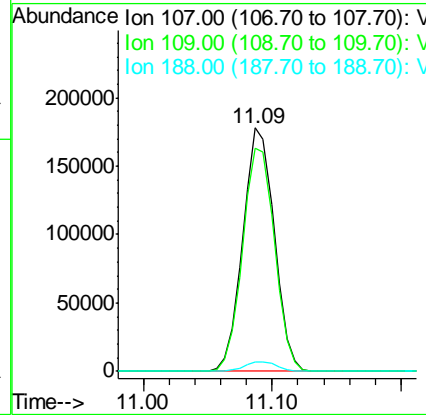
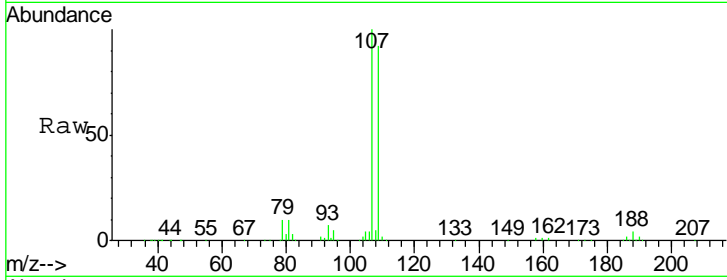




#51  
 1,2-Dibromoethane  
 Concen: 99.662 ug/L  
 RT: 11.09 min Scan# 1520  
 Delta R.T. -0.00 min  
 Lab File: VY003661.D  
 Acq: 04 Dec 2020 12:48

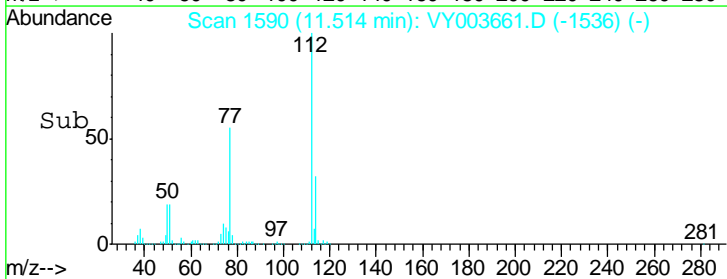
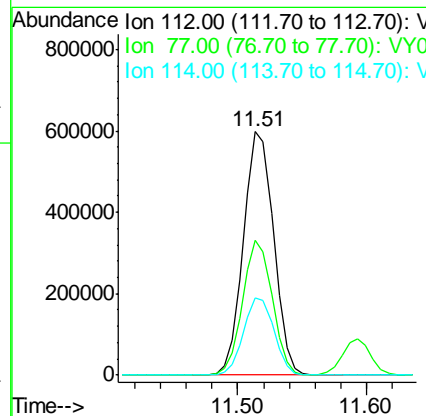
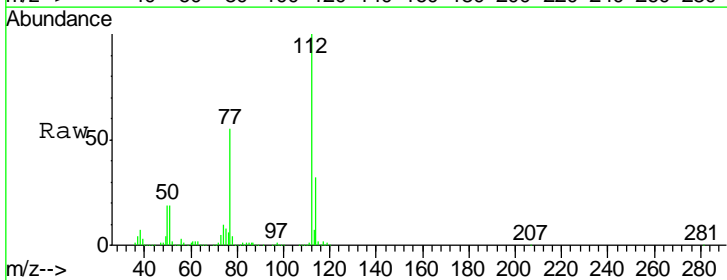
Instrument :  
 MSVOA\_Y  
 ClientSampled :  
 VSTD10081

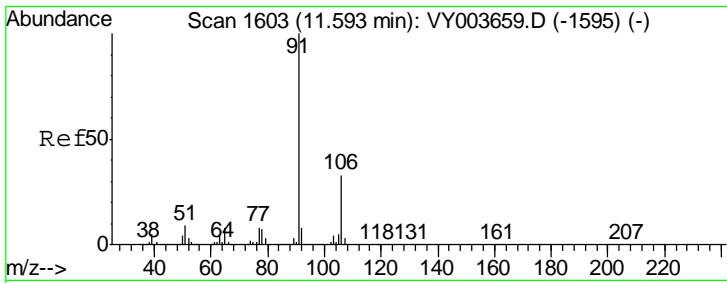
| Tgt Ion | Resp   | Lower | Upper |
|---------|--------|-------|-------|
| 107     | 299875 |       |       |
| 109     | 91.7   | 65.2  | 121.0 |
| 188     | 3.8    | 3.0   | 4.6   |



#52  
 Chlorobenzene  
 Concen: 94.788 ug/L  
 RT: 11.51 min Scan# 1590  
 Delta R.T. -0.00 min  
 Lab File: VY003661.D  
 Acq: 04 Dec 2020 12:48

| Tgt Ion | Resp   | Lower | Upper |
|---------|--------|-------|-------|
| 112     | 971047 |       |       |
| 77      | 55.2   | 44.4  | 66.6  |
| 114     | 31.9   | 22.4  | 41.6  |

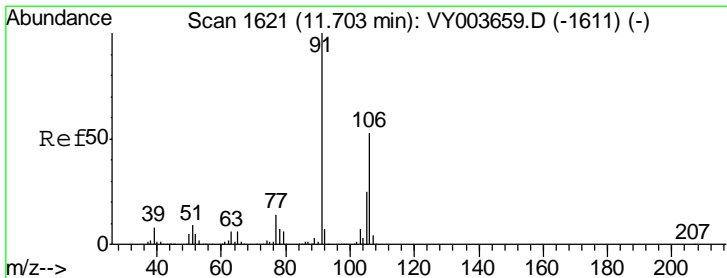
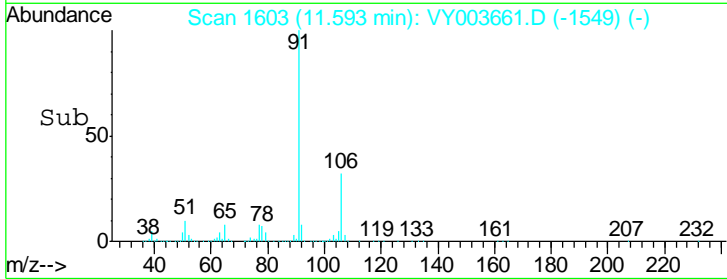
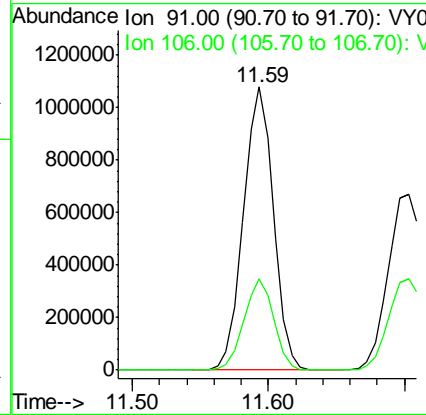
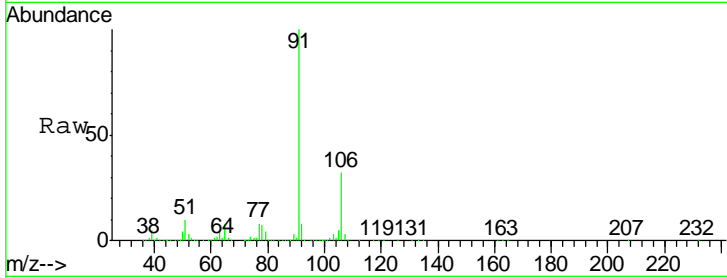




#53  
 Ethylbenzene  
 Concen: 100.538 ug/L  
 RT: 11.59 min Scan# 1603  
 Delta R.T. -0.00 min  
 Lab File: VY003661.D  
 Acq: 04 Dec 2020 12:48

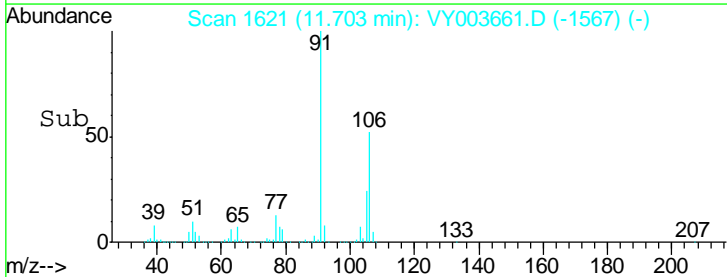
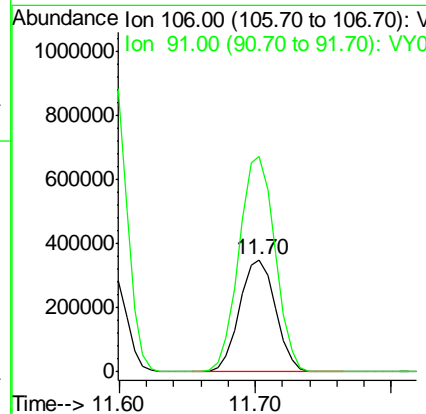
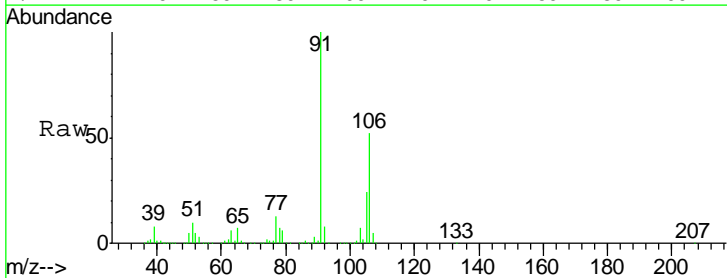
Instrument :  
 MSVOA\_Y  
 ClientSampled :  
 VSTD10081

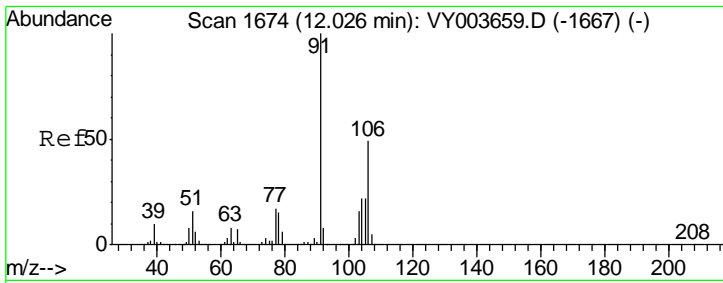
Tgt Ion: 91 Resp: 1659346  
 Ion Ratio Lower Upper  
 91 100  
 106 32.1 23.3 43.3



#54  
 m,p-Xylene  
 Concen: 101.047 ug/L  
 RT: 11.70 min Scan# 1621  
 Delta R.T. -0.00 min  
 Lab File: VY003661.D  
 Acq: 04 Dec 2020 12:48

Tgt Ion: 106 Resp: 645458  
 Ion Ratio Lower Upper  
 106 100  
 91 191.9 131.3 243.9

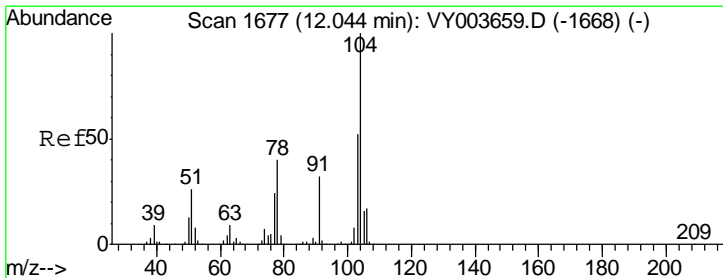
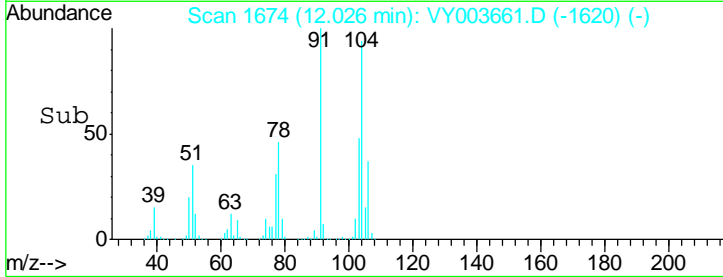
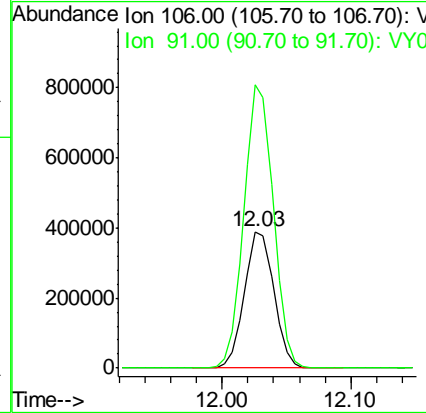
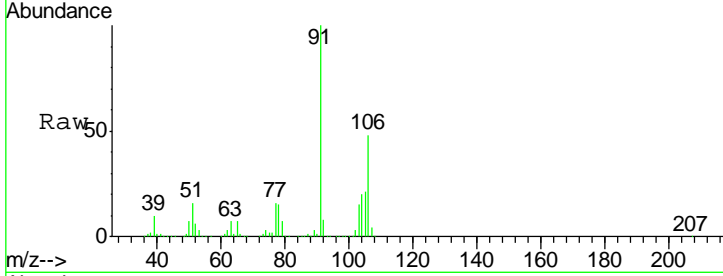




#55  
 o-xylene  
 Concen: 112.630 ug/L  
 RT: 12.03 min Scan# 1674  
 Delta R.T. -0.00 min  
 Lab File: VY003661.D  
 Acq: 04 Dec 2020 12:48

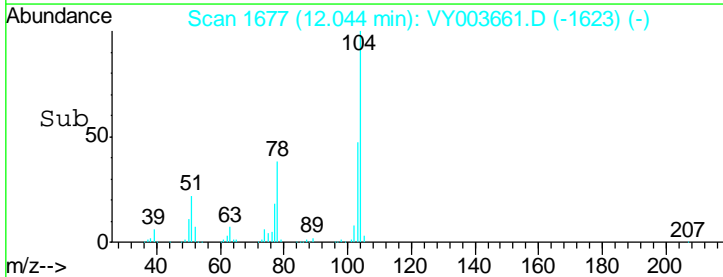
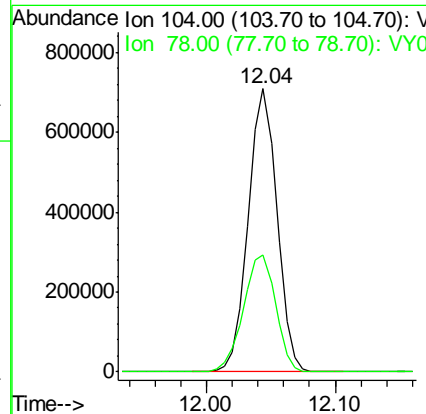
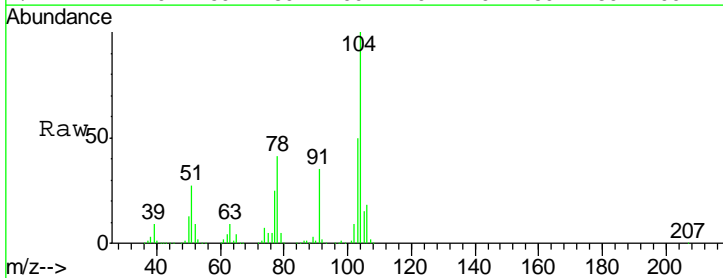
Instrument :  
 MSVOA\_Y  
 ClientSampled :  
 VSTD10081

Tgt Ion:106 Resp: 614776  
 Ion Ratio Lower Upper  
 106 100  
 91 207.3 141.7 263.3

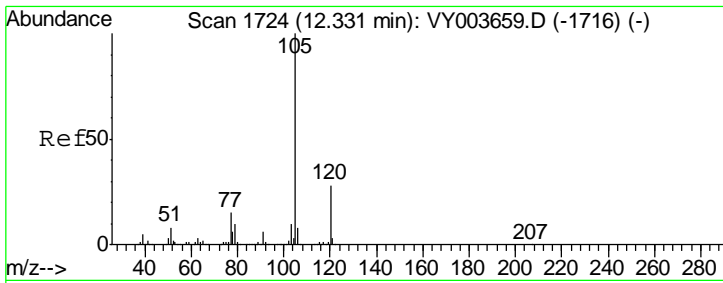


#56  
 Styrene  
 Concen: 104.212 ug/L  
 RT: 12.04 min Scan# 1677  
 Delta R.T. -0.00 min  
 Lab File: VY003661.D  
 Acq: 04 Dec 2020 12:48

Tgt Ion:104 Resp: 1087833  
 Ion Ratio Lower Upper  
 104 100  
 78 41.1 28.1 52.1





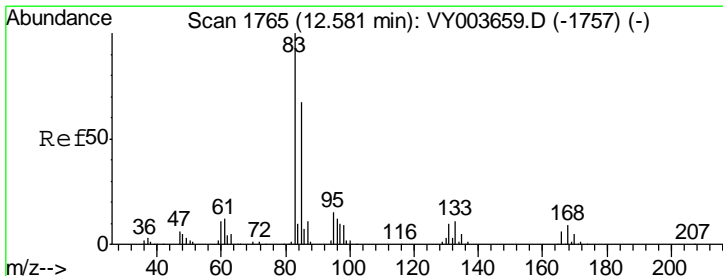
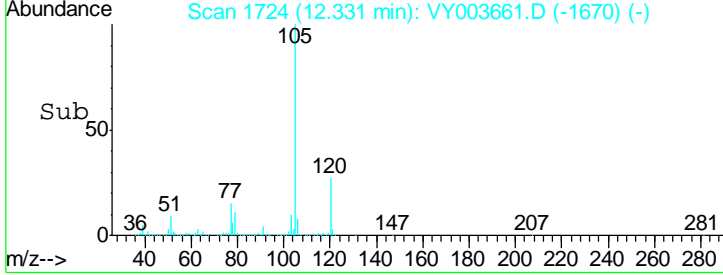
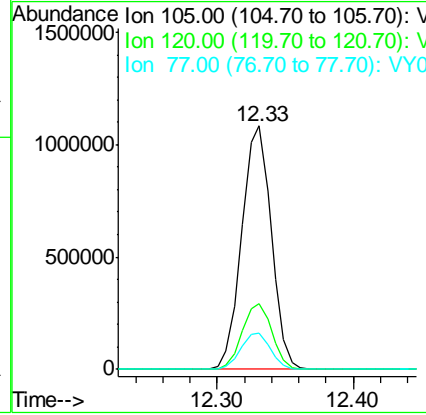
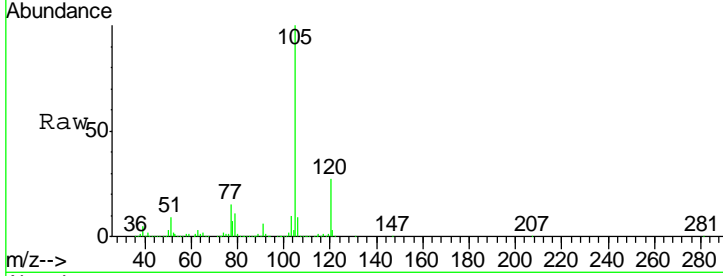


#57  
 Isopropylbenzene  
 Concen: 128.062 ug/L  
 RT: 12.33 min Scan# 1724  
 Delta R.T. -0.00 min  
 Lab File: VY003661.D  
 Acq: 04 Dec 2020 12:48

Instrument :  
 MSVOA\_Y  
 ClientSampled :  
 VSTD10081

Tgt Ion: 105 Resp: 1639661

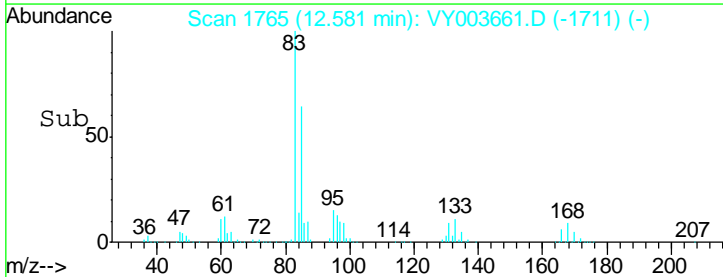
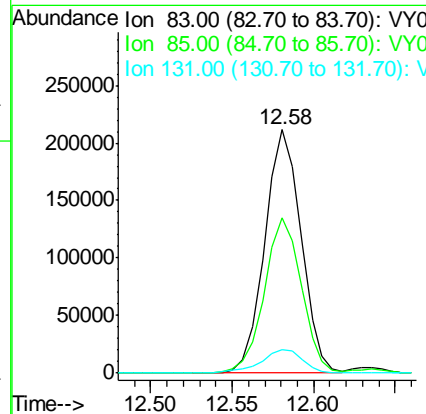
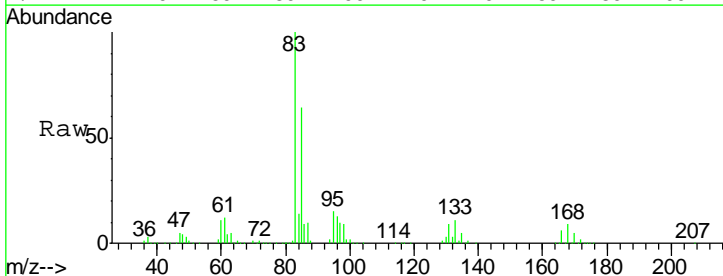
| Ion | Ratio | Lower | Upper |
|-----|-------|-------|-------|
| 105 | 100   |       |       |
| 120 | 27.4  | 22.3  | 33.5  |
| 77  | 15.0  | 11.9  | 17.9  |

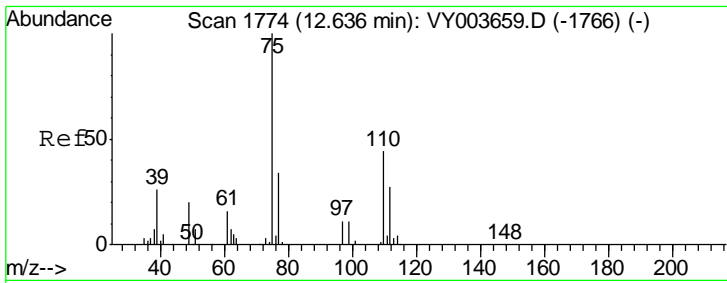


#58  
 1,1,2,2-Tetrachloroethane  
 Concen: 92.675 ug/L  
 RT: 12.58 min Scan# 1765  
 Delta R.T. -0.00 min  
 Lab File: VY003661.D  
 Acq: 04 Dec 2020 12:48

Tgt Ion: 83 Resp: 326218

| Ion | Ratio | Lower | Upper |
|-----|-------|-------|-------|
| 83  | 100   |       |       |
| 85  | 63.6  | 47.2  | 87.6  |
| 131 | 9.4   | 8.4   | 12.6  |

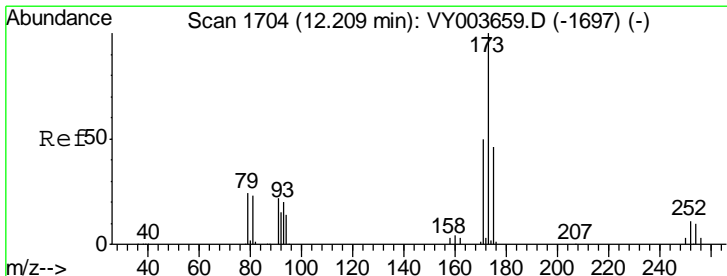
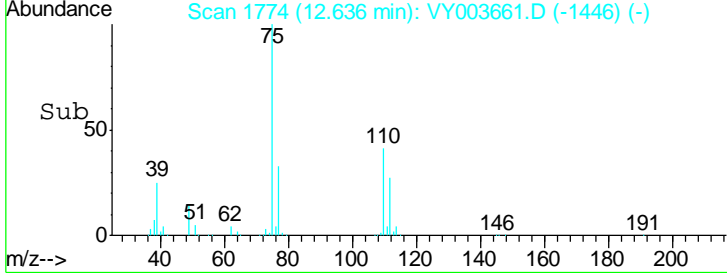
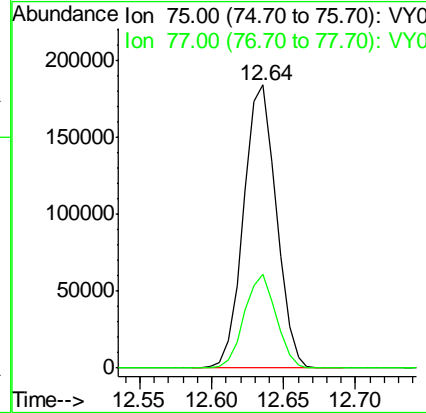
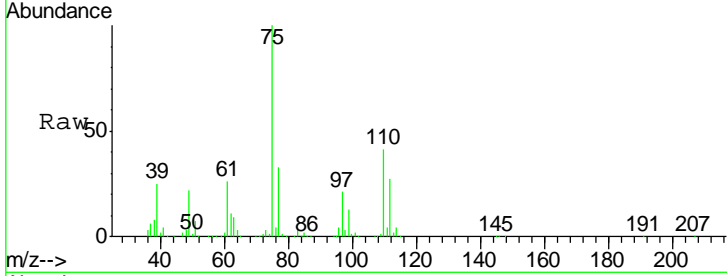




#59  
 1,2,3-Trichloropropane  
 Concen: 102.499 ug/L  
 RT: 12.64 min Scan# 1774  
 Delta R.T. -0.00 min  
 Lab File: VY003661.D  
 Acq: 04 Dec 2020 12:48

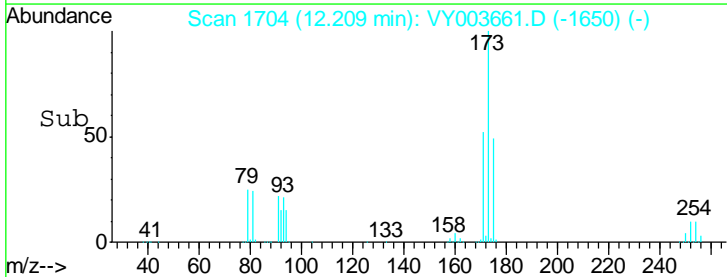
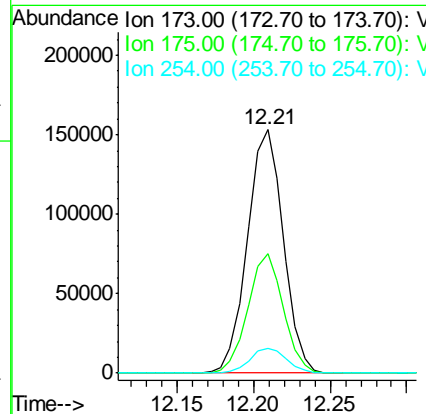
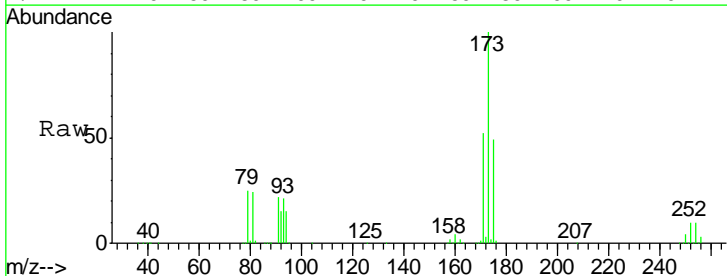
Instrument :  
 MSVOA\_Y  
 ClientSampled :  
 VSTD10081

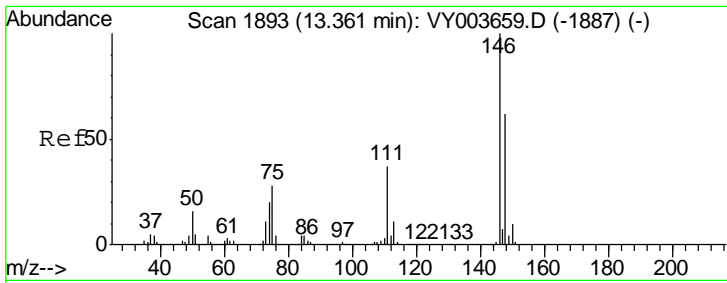
Tgt Ion: 75 Resp: 289242  
 Ion Ratio Lower Upper  
 75 100  
 77 32.4 25.9 38.9



#62  
 Bromoform  
 Concen: 95.593 ug/L  
 RT: 12.21 min Scan# 1704  
 Delta R.T. -0.00 min  
 Lab File: VY003661.D  
 Acq: 04 Dec 2020 12:48

Tgt Ion: 173 Resp: 249774  
 Ion Ratio Lower Upper  
 173 100  
 175 48.2 39.1 58.7  
 254 10.3 7.7 11.5

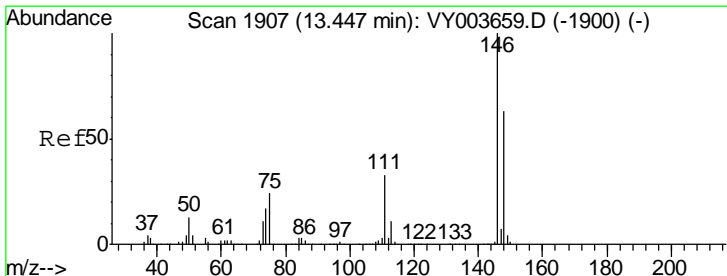
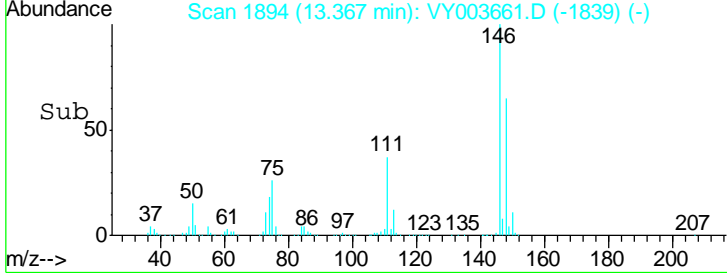
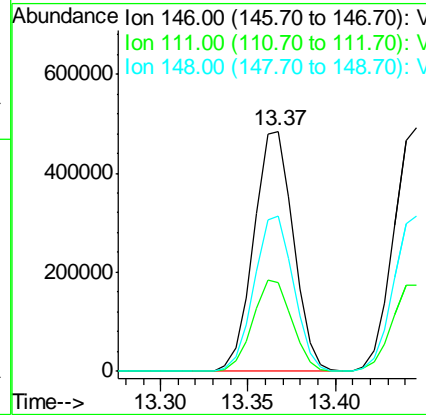
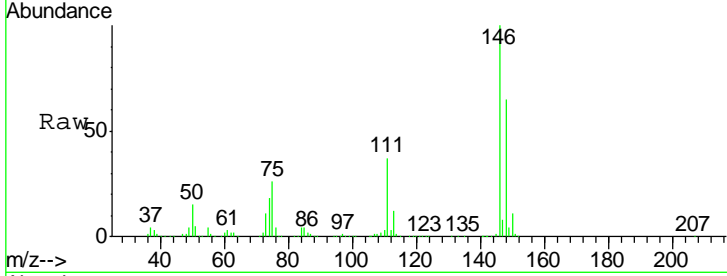




#63  
 1,3-Dichlorobenzene  
 Concen: 94.002 ug/L  
 RT: 13.37 min Scan# 1894  
 Delta R.T. 0.01 min  
 Lab File: VY003661.D  
 Acq: 04 Dec 2020 12:48

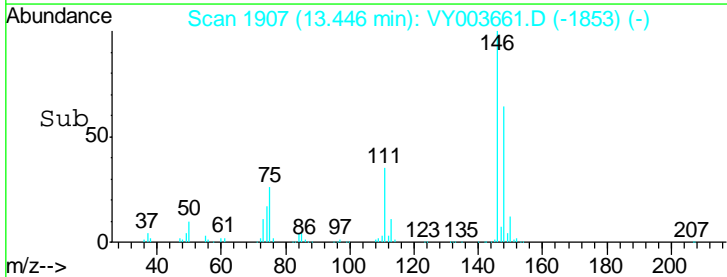
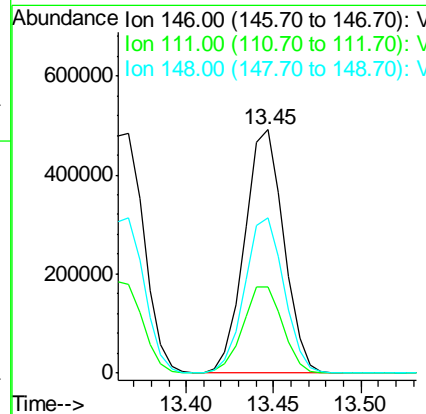
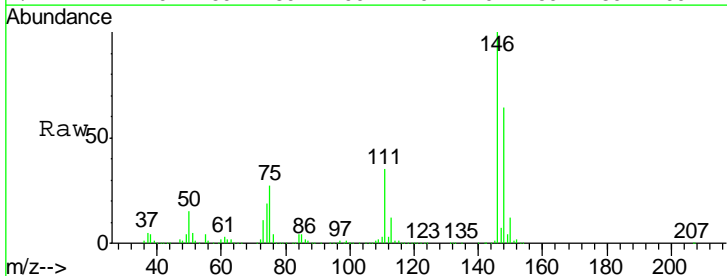
Instrument :  
 MSVOA\_Y  
 ClientSampled :  
 VSTD10081

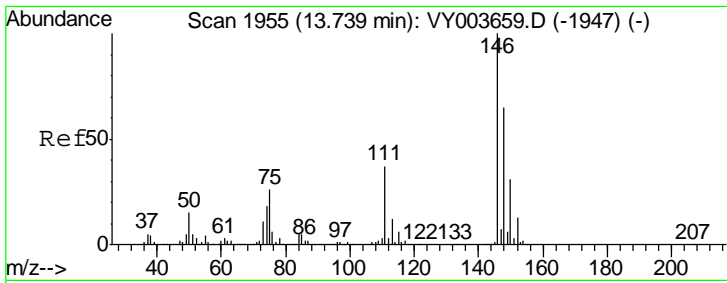
| Tgt Ion | Resp | Lower | Upper |
|---------|------|-------|-------|
| 146     | 100  |       |       |
| 111     | 37.0 | 26.0  | 48.4  |
| 148     | 64.7 | 43.7  | 81.1  |



#64  
 1,4-Dichlorobenzene  
 Concen: 91.213 ug/L  
 RT: 13.45 min Scan# 1907  
 Delta R.T. -0.00 min  
 Lab File: VY003661.D  
 Acq: 04 Dec 2020 12:48

| Tgt Ion | Resp | Lower | Upper |
|---------|------|-------|-------|
| 146     | 100  |       |       |
| 111     | 35.3 | 23.2  | 43.0  |
| 148     | 63.7 | 43.8  | 81.4  |

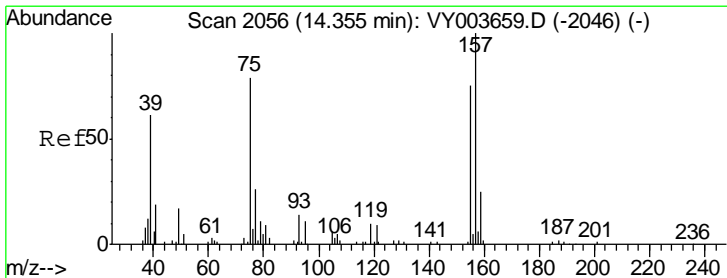
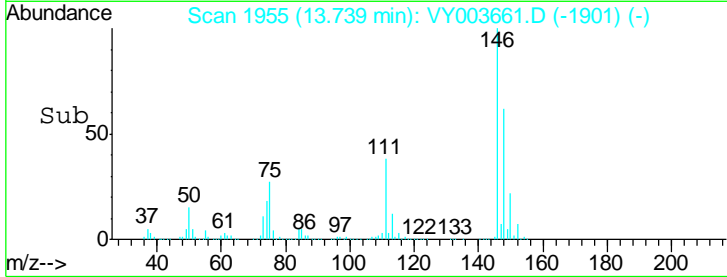
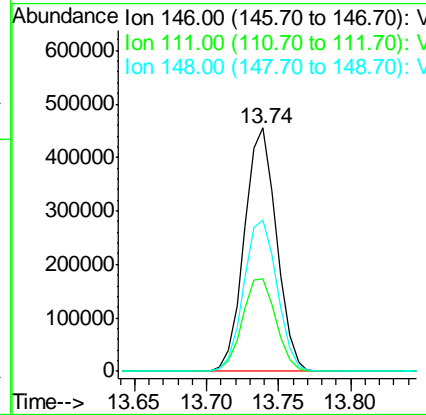
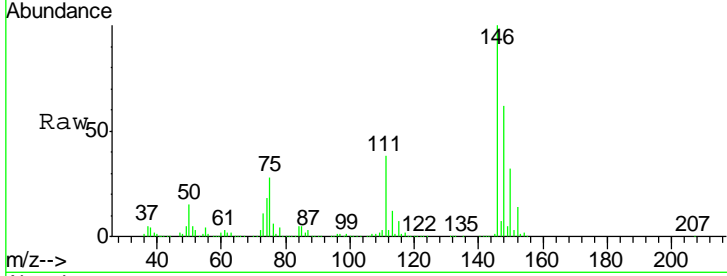




#65  
 1,2-Dichlorobenzene  
 Concen: 102.429 ug/L  
 RT: 13.74 min Scan# 1955  
 Delta R.T. -0.00 min  
 Lab File: VY003661.D  
 Acq: 04 Dec 2020 12:48

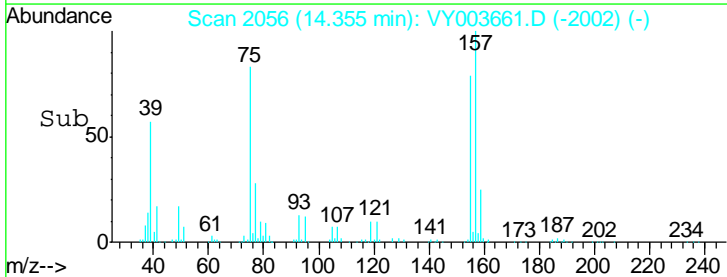
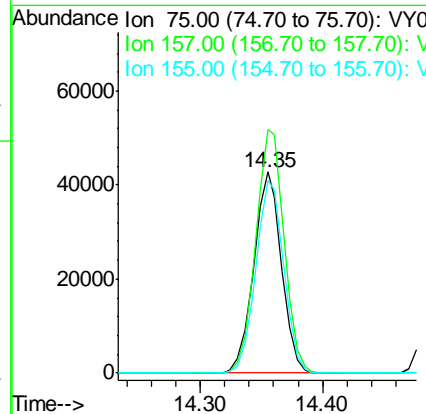
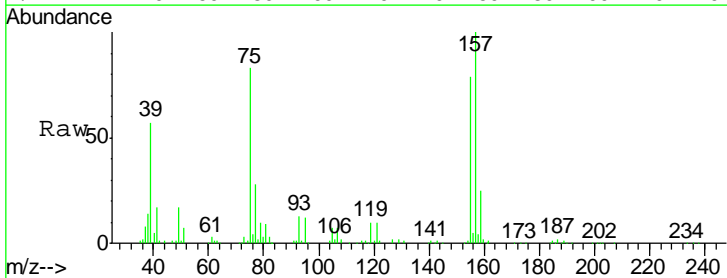
Instrument :  
 MSVOA\_Y  
 ClientSampleId :  
 VSTD10081

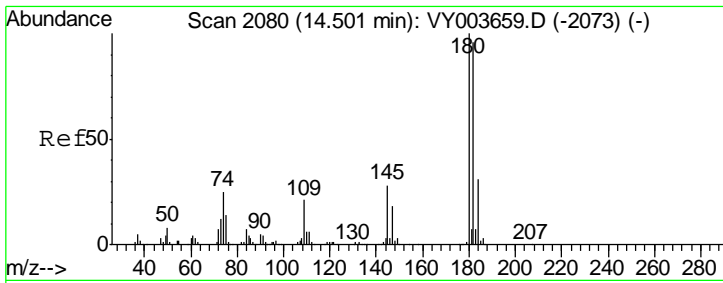
| Tgt Ion | Resp | Lower | Upper |
|---------|------|-------|-------|
| 146     | 100  |       |       |
| 111     | 38.0 | 30.0  | 45.0  |
| 148     | 62.2 | 51.8  | 77.8  |



#66  
 1,2-Dibromo-3-chloropropane  
 Concen: 111.950 ug/L  
 RT: 14.35 min Scan# 2056  
 Delta R.T. -0.00 min  
 Lab File: VY003661.D  
 Acq: 04 Dec 2020 12:48

| Tgt Ion | Resp  | Lower | Upper |
|---------|-------|-------|-------|
| 75      | 100   |       |       |
| 157     | 120.9 | 101.3 | 151.9 |
| 155     | 95.9  | 76.2  | 114.4 |

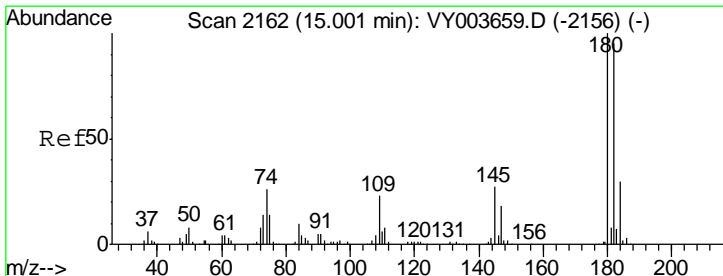
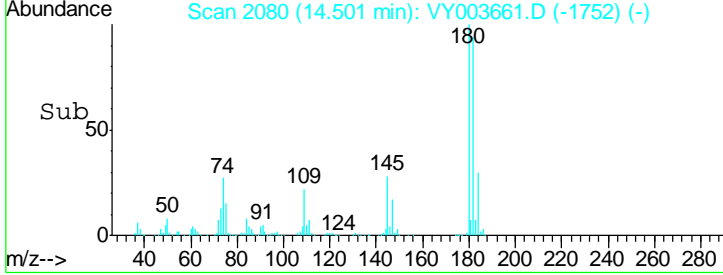
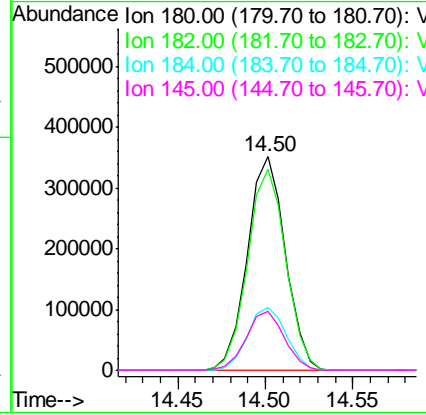
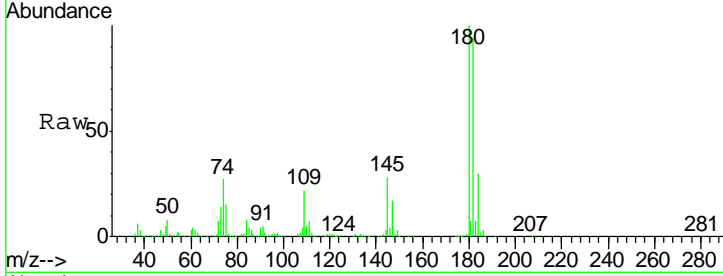




#67  
 1,3,5-Trichlorobenzene  
 Concen: 115.174 ug/L  
 RT: 14.50 min Scan# 2080  
 Delta R.T. -0.00 min  
 Lab File: VY003661.D  
 Acq: 04 Dec 2020 12:48

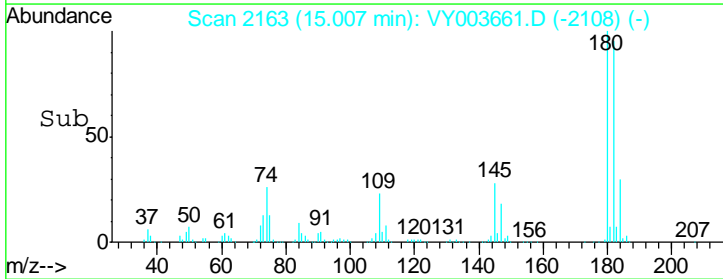
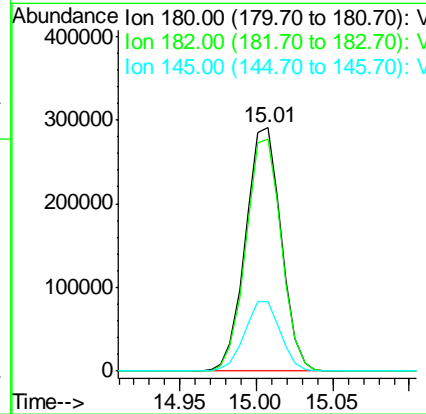
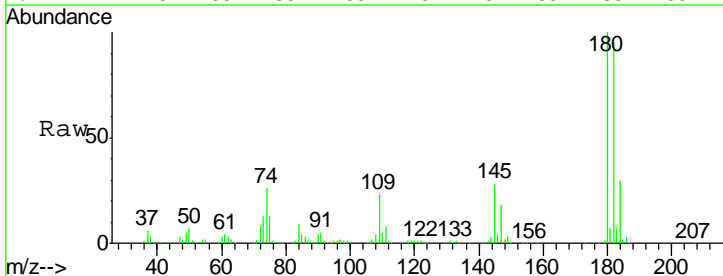
Instrument : MSVOA\_Y  
 ClientSampled : VSTD10081

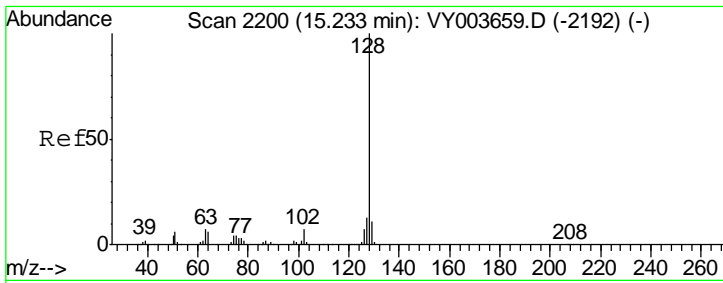
| Tgt Ion | Resp | Lower | Upper |
|---------|------|-------|-------|
| 180     | 100  |       |       |
| 182     | 94.8 | 76.0  | 114.0 |
| 184     | 30.4 | 24.2  | 36.2  |
| 145     | 27.9 | 22.2  | 33.2  |



#68  
 1,2,4-trichlorobenzene  
 Concen: 119.121 ug/L  
 RT: 15.01 min Scan# 2163  
 Delta R.T. 0.01 min  
 Lab File: VY003661.D  
 Acq: 04 Dec 2020 12:48

| Tgt Ion | Resp | Lower | Upper |
|---------|------|-------|-------|
| 180     | 100  |       |       |
| 182     | 95.0 | 76.5  | 114.7 |
| 145     | 28.6 | 22.2  | 33.4  |

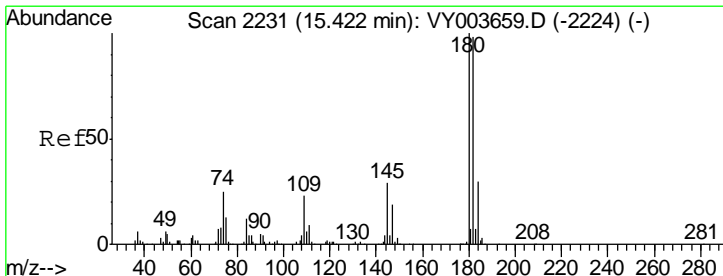
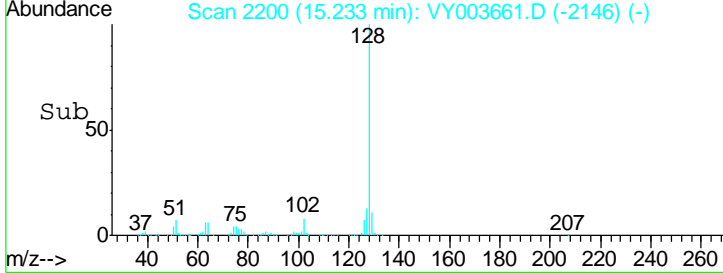
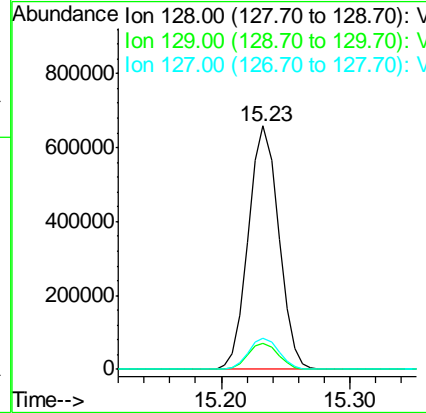
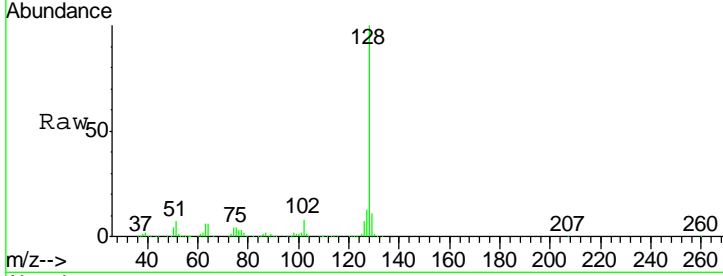




#69  
 Naphthalene  
 Concen: 146.098 ug/L  
 RT: 15.23 min Scan# 2200  
 Delta R.T. -0.00 min  
 Lab File: VY003661.D  
 Acq: 04 Dec 2020 12:48

Instrument :  
 MSVOA\_Y  
 ClientSampled :  
 VSTD10081

| Tgt Ion | Resp    | Lower | Upper |
|---------|---------|-------|-------|
| 128     | 1070694 |       |       |
| 129     | 10.9    | 8.7   | 13.1  |
| 127     | 12.9    | 10.2  | 15.4  |



#70  
 1,2,3-Trichlorobenzene  
 Concen: 137.236 ug/L  
 RT: 15.42 min Scan# 2231  
 Delta R.T. -0.00 min  
 Lab File: VY003661.D  
 Acq: 04 Dec 2020 12:48

| Tgt Ion | Resp   | Lower | Upper |
|---------|--------|-------|-------|
| 180     | 431943 |       |       |
| 182     | 94.5   | 76.9  | 115.3 |
| 145     | 30.0   | 24.2  | 36.4  |

